

Atmospheric odd nitrogen response to electron forcing from a 6D magnetospheric hybrid-kinetic simulation

Tuomas Häkkinen¹, Maxime Grandin^{2,1}, Markus Battarbee², Monika E. Szélag¹, Markku Alho², Leo Kotipalo², Niilo Kalakoski¹, Pekka T. Verronen^{1,3}, and Minna Palmroth^{1,2}

¹Space and Earth Observation Centre, Finnish Meteorological Institute, Helsinki, Finland

²Department of Physics, University of Helsinki, Helsinki, Finland

³Sodankylä Geophysical Observatory, University of Oulu, Sodankylä, Finland

Correspondence: Tuomas Häkkinen (tuomas.hakkila@fmi.fi)

Abstract. Modelling the distribution of odd nitrogen (NO_x) in the polar middle and upper atmosphere has proven to be a complex task. Firstly, its production by energetic electron precipitation is highly variable ~~on hourly time scales~~ across a range of temporal scales from seconds to decades. Secondly, there are uncertainties in the measurement-based but simplified electron flux data sets that are currently used in atmosphere and climate models. The altitude distribution of NO_x is strongly affected by atmospheric dynamics also on monthly time scales, particularly in the polar winter periods when the isolated air inside the polar vortex descends from lower thermosphere to mesosphere and stratosphere. Recent comparisons between measurements and simulations have revealed strong differences in the NO_x distribution, with questions remaining about the representation of both production and transport in models. Here we present for the first time a novel approach, where the electron atmospheric forcing in the auroral energy range (50 eV – 50 keV) is derived from a magnetospheric hybrid-kinetic simulation with a detailed description of energy range and resolution, and spatial and diurnal distribution. These electron data are used as input in a global whole atmosphere model to study the impact on polar NO_x and ozone. We ~~will~~ show that the magnetospheric electron data ~~provides~~ provide a realistic representation of the forcing which leads to considerable impact in the lower thermosphere, mesosphere and stratosphere. We find that during the polar winter the simulated auroral electron precipitation increases the polar NO_x concentrations up to ~~200%~~, ~~50–215%~~, 59%, and ~~7–7.8%~~ in the lower thermosphere, mesosphere, and upper stratosphere, respectively, when compared to no auroral electron forcing in the atmospheric model. These results demonstrate the potential of combining magnetospheric and atmospheric simulations for detailed studies of solar wind – atmosphere coupling.

Copyright statement. TEXT

1 Introduction

~~Understanding~~ Gaining insight into the polar mesosphere–lower thermosphere–ionosphere (MLTI) region ~~presents a unique~~ poses a particular challenge. The MLTI ~~covers the approximate altitude range 80–200~~ extends from roughly 80 to 200 km,

and is hence simultaneously too high for a range that is beyond the reach of many ground-based observations and too low for efficient in-situ satellite-borne below the optimal range for most satellite measurements (Palmroth et al., 2021). Therefore, accurate modelling of the MLTI is required to complement essential to augment the scarce direct measurements to further our knowledge of the and deepen our understanding of this region. The polar MLTI (polewards of 60°) depends on is influenced by solar radiation, which drives both diurnal and seasonal effects generates both daily and seasonal variations due to the planet's rotation and axis of inclination. The magnetosphere, with its many poorly understood mechanisms, also controls the physical state of the polar MLTI through its electromagnetic forcing (e.g. Sarris et al., 2023). Hence the polar MLTI is characterized by axial tilt. Additionally, this region is also affected by the electromagnetic forces from the magnetosphere, involving several mechanisms that remain poorly understood (e.g. Sarris et al., 2023). This leads to complex dynamics between the neutral atmosphere and the electromagnetic ionosphere, leading to great ionosphere, creating considerable uncertainties in our understanding of the region. knowledge of the polar MLTI.

Nitric Oxide (NO), a member of the odd nitrogen family (NO_x, defined as the sum of N, NO, and NO₂), is one of the most important species in the polar MLTI energetics (e.g. Mlynchak et al., 2005). is produced in the atmosphere as the result of solar energetic radiation while in the polar regions energetic particle precipitation (EPP) also becomes a major source (Barth et al., 2001). Through its descent inside the polar vortex, NO_x also provides a dynamical connection between MLTI and stratospheric altitudes (Funke et al., 2014). In the upper stratosphere, NO_x transport from above leads to depletion of ozone which can be has been measured using satellite-based instruments (Damiani et al., 2016). Because ozone strongly absorbs solar ultraviolet radiation, it is one of the main constituents determining the thermal structure of the stratosphere. Through ozone, NO_x can have an impact on the radiative balance of the polar atmosphere beyond just within the MLTI.

There are essentially three In the atmosphere, NO_x is produced primarily as the result of solar radiation. However, in the polar regions, especially during the polar night, energetic particle precipitation (EPP) is a major driver of NO_x production (Barth et al., 2001). There are three primary EPP sources of NO_x: solar protons proton events, radiation belt electrons, and auroral electrons (Verronen and Rodger, 2015). The energy of solar protons and radiation belt electrons are large enough for them to penetrate and produce NO_x in the mesosphere and stratosphere, allowing a more direct impact on ozone. These two sources of can currently be represented in long-term atmospheric and climate simulations although uncertainties are still present in the latter (Matthes et al., 2017; Sinnhuber et al., 2021). Because the precipitation of while auroral electrons, the third source of, is restricted with typical energies on the order of a few kiloelectronvolts, are limited to thermospheric altitudes due to its lower energy, its impact on the stratospheric ozone balance is to a larger extent affected by polar atmosphere dynamics and is not fully understood. Auroral electrons originate in the magnetosphere, chiefly via substorms, where the magnetotail suddenly disrupts. Auroral precipitation occurs on a continuous basis into the upper atmosphere in the polar regions, particularly along the auroral oval, located most of the time between 60° and 75° geomagnetic latitude. The auroral electron flux is significantly enhanced during magnetospheric substorms, when the magnetotail is suddenly disrupted and launches a vast large number of electrons and protons (and protons) of variable energies towards the ionosphere (Palmroth et al., 2017; Palmroth et al., 2023) (Palmroth et al., 2017; Palmroth et al., 2023) Substorms and pulsating aurora, a phenomenon during the substorm recovery phase, have been shown to produce NO_x (Seppälä et al., 2015; Turunen et al., 2016). As substorms occur on a regular basis,

the forcing from auroral electron precipitation also takes place on a roughly daily basis (Partamies et al., 2013). In long-term climate simulations, models typically include the In fact, auroral electrons are probably the the largest contributor to the overall polar MLTI NO_x production from auroral electrons using proxy models based on geomagnetic indices, and typically use a simplistic representation for their energy spectrum (e.g. Marsh et al., 2007)-budget (Sinnhuber et al., 2011).

Atmospheric models ~~are struggling~~ struggle to produce correct amounts of NO_x in the MLTI when compared to observations (Randall et al., 2015). ~~This inaccuracy leads,~~ leading to an incomplete representation of the radiative balance within the polar region through the NO_x impact on stratospheric ozone (Szelag et al., 2022). ~~The suggested reasons for~~ Explanations for the discrepancy in NO_x ~~deficit include underestimation of radiation belt electron forcing (Hendrickx et al., 2018). However, the production from auroral electrons (<30) likely also plays a role in the discrepancy because it is a relatively continuous as well as probably the largest contributor to the overall budget in the polar MLTI (Sinnhuber et al., 2011). The simplified inclusion of auroral electrons in atmospheric simulations is incomplete both in terms of auroral electron fluxes and spectra, and these may account for the missing production . Further, vary.~~ Previous studies have shown that the transport of thermospheric NO_x to ~~the mesosphere and lower~~ mesospheric and stratospheric altitudes remains a challenge in models (Merner and Schmidt, 2016; Smith-Johnsen et al., 2022). Hendrickx et al. (2018) also suggested that models underestimate the radiation belt electron forcing, and that models have inadequate ion chemistry schemes. The lack of ~~detailed, long-term auroral electron forcing in climate models could therefore obstruct accurate evaluation of polar climate variability.~~ specific focus on auroral electron precipitation may also be a contributing factor to the NO_x underestimation. In long-term climate simulations, models typically include the NO_x production from auroral electrons using proxy models based on geomagnetic indices, and typically use a simplistic representation for their energy spectrum (e.g. Marsh et al., 2007). Detailed electron models that include auroral energies exist (e.g. Wissing and Kallenrode, 2009) and have been used in atmospheric model comparisons (Nesse Tyssøy et al., 2022; Sinnhuber et al., 2021), but emphasis is often on electrons at medium energies (30–1000 keV).

~~In this paper, we~~ The objective of this paper is to present the first results of a new method to quantify the chemical response of the upper and middle atmosphere to auroral electron precipitation. We report on the first-time combination of magnetospheric and atmospheric modelling, with the aim of quantifying the auroral electron impact and show impacts on NO_x and ozone concentrations resulting from auroral electron forcing. We use eVlasiator, a variant of the global hybrid-Vlasov model Vlasiator, to simulate the electron fluxes at auroral energies from 50 eV to 50 keV. ~~Compared to proxy-based parameterizations, the modelled magnetospheric electron fluxes characterise the altitude extent and distribution of the forcing in more detail.~~ Atmospheric ionisation rates derived from these fluxes are then used in the Whole Atmosphere Community Climate Model (WACCM) to determine ~~auroral electron impact on~~ the polar atmospheric NO_x and ~~ozone~~ O₃ impacts from the MLTI to the upper stratosphere. ~~Finally, we discuss the potential of the magnetosphere-atmosphere coupling.~~ This study should be understood as an initial effort towards improving the description of the atmospheric effects of particle precipitation by including first principles in the modelling of the auroral electron fluxes, rather than relying on empirical parametrisation of the fluxes. The modelled magnetospheric electron fluxes characterise the altitude extent and distribution of the forcing in more detail than proxy-based parametrisations. We also discuss the limitations of our current approach as well as the potential in understanding the solar wind – atmosphere coupling ~~and outline future steps of development.~~

2 Methods

2.1 Vlasiator and eVlasiator

Vlasiator is a global hybrid-Vlasov model simulating ion-kinetic plasma physics of near-Earth space (Palmroth et al., 2018),
95 which recently became capable of running 6D (three spatial dimensions, three velocity dimensions) simulations (Ganse
et al., 2023). Vlasiator models the collisionless ion populations directly as velocity distribution functions (VDFs), ~~discretized~~
discretised on Cartesian grids, allowing for accurate representation of phenomena such as wave-particle interactions (Dubart
et al., 2020) and precipitating protons (Grandin et al., 2019, 2020, 2023), which cannot be modelled using the magnetohydro-
dynamic (MHD) codes (Palmroth et al., 2006). The spatial simulation domain is divided into either a uniform Cartesian 2D
100 spatial mesh or a Cartesian 3D mesh with regions of interest refined with an octree cell-based refinement algorithm (Ganse
et al., 2023; Kotipalo et al., 2024). Each spatial cell contains a 3D velocity mesh consisting of cubic uniform Cartesian cells.
In order to fit the massive amount of simulation data into memory, Vlasiator ~~utilizes~~ utilises a sparse algorithm (von Althaus
et al., 2014) where only those regions of velocity space which are deemed to contribute to plasma moments in a significant
fashion are stored and propagated. This is implemented through discarding blocks of the grid which have phase-space density
105 below a pre-defined threshold, yet maintaining a buffer region around those cells in order to ensure physical behaviour at the
edges of the velocity domain. The simulation state is propagated directly via the Vlasov equation, with electric and magnetic
fields solved on a regular Cartesian grid and closure provided by MHD Ohm's law with the Hall and electron pressure gradient
terms included (Palmroth et al., 2018).

A typical Vlasiator simulation models the global geomagnetic domain of the Earth, spanning tens to hundreds of Earth
110 radii ($R_E = 6371$ km) in each dimension with a spatial resolution of the order of the ion inertial length, and with an inner
boundary positioned at roughly 5 Earth radii. The velocity grid is defined so to be able to ~~discretize~~ discretise the
inflowing solar wind. The Earth's magnetic field is ~~modeled at full strength~~ modelled as a standard dipole field with the
dipole moment set to that of the actual Earth value, facilitating direct comparison with spacecraft observations. Sample
simulation ~~parametrizations~~ parametrisations can be found for example in ~~Horaites et al. (2023) and Palmroth et al. (2023)~~
115 Horaites et al. (2023), Palmroth et al. (2023), and Grandin et al. (2024). Vlasiator runs are propagated on the order of hundreds
to thousands of seconds, in order to facilitate self-consistent formation of the magnetospheric domain and its dynamics, but
constrained by the availability of computational resources.

eVlasiator is an offshoot of Vlasiator which considers electrons as a kinetic population (Battarbee et al., 2021) instead of
the usual ions. eVlasiator is not a standard full-kinetic plasma code, instead ~~evaluating~~ evaluates electron response to ion-
120 scale structures and fields. What eVlasiator does provide is realistic electron VDFs evaluated for a single point in time from
a larger Vlasiator simulation, such as presented in ~~Alho et al. (2022)~~ Alho et al. (2022) and validated against spacecraft ob-
servations. Since ~~Alho et al. (2022)~~ Alho et al. (2022), eVlasiator has been extended to work on 6D Vlasiator inputs, with the
code available via Zenodo (Pfau-Kempf et al., 2022). Thus, eVlasiator can be used to infer kinetic electron VDFs along
~~connected~~ field lines, and thus also allowing the calculation of precipitating electron fluxes. Due to numerical constraints,
125 eVlasiator ~~utilizes~~ supports use of a reduced mass ratio, for example $m_p/m_e \approx 183.6$ ~~in Alho et al. (2022)~~, $m_e/m_{e,phys} = 10$

in Alho et al. (2022) and $m_p/m_e = 40$, $m_e/m_{e,\text{phys}} = 45.9$ in this study. The use of heavier electrons allows for completing a simulation with significantly reduced computational resources.

2.2 Simulating precipitating particle fluxes

In (e)Vlasiator, precipitating particle differential number fluxes are calculated in every ordinary space cell, at every output time
130 step in the simulation. At a given position \mathbf{r} in ordinary space, the precipitating electron differential number flux \mathcal{F}_e value at energy E is given by

$$\mathcal{F}_e(E, \mathbf{r}) = \frac{v^2}{m_e} \langle f_e(\mathbf{r}, v, \theta, \varphi) \rangle_{\theta_0} \quad (1)$$

with $v = \sqrt{2E/m_e}$ the corresponding electron speed, m_e the electron mass, f_e the electron phase-space density, θ the pitch
135 angle, φ the gyrophase angle, and θ_0 the bounce loss cone angle, and where $\langle \cdot \rangle_{\theta_0}$ denotes averaging over θ and φ inside the loss cone. The full derivation of the version of Eq. (1) for proton fluxes can be found in Grandin et al. (2019). Subsequent studies investigating dayside and nightside auroral proton precipitation under various driving conditions are presented in Grandin et al. (2020, 2023) and Horaites et al. (2023).

In this study, we present for the first time precipitating electron fluxes obtained with eVlasiator. The Vlasiator run used as the
140 basis for the eVlasiator simulation is the same as described in e.g. Palmroth et al. (2023), and the eVlasiator run is the first 3D-3V magnetospheric eVlasiator simulation. The Vlasiator simulation is driven by a constant solar wind of $V_x = -750 \text{ km s}^{-1}$ with a density of $n_p = 10^6 \text{ m}^{-3}$ and a temperature of 0.5 MK. The inner boundary consists of stationary plasma at a radius of $4.7 R_E$ and is modelled as a near-conducting sphere. The spatial mesh has a base resolution of 8000 km at the lowest refinement level, increasing up to 1000 km in regions of interest such as the magnetotail and the magnetopause. The ion velocity cell resolution is 40 km s^{-1} . The Vlasiator simulation was propagated for a total of 1506 seconds. The eVlasiator run based on the
145 final state of the magnetospheric Vlasiator simulation ~~utilized~~ utilised a mass ratio of $m_p/m_e = 40$ and an electron velocity cell resolution of 128 km s^{-1} , whilst maintaining the spatial resolution and fields of the Vlasiator simulation. Due to computational constraints, the eVlasiator simulation was run selectively on the inner magnetosphere only, spanning $X \in [-20.1, 17.6] R_E$ and $Y, Z \in [-20.1, +20.1] R_E$, and was propagated for a time extent of 1.4 s. Figure 1 shows the Vlasiator and eVlasiator simulation domains and examples of electron velocity distributions in eVlasiator.

150 The eVlasiator output for WACCM modelling is the electron differential number flux (Eq. 1), in terms of energy. Due to the eVlasiator constraint of a reduced mass ration, the energisation of the high-mass electrons is assumed to be representative, and the eVlasiator differential number flux, in terms energy, is taken to represent the differential number flux, in terms of energy, of real-mass electrons and passed forward for the construction of the forcing dataset as-is.

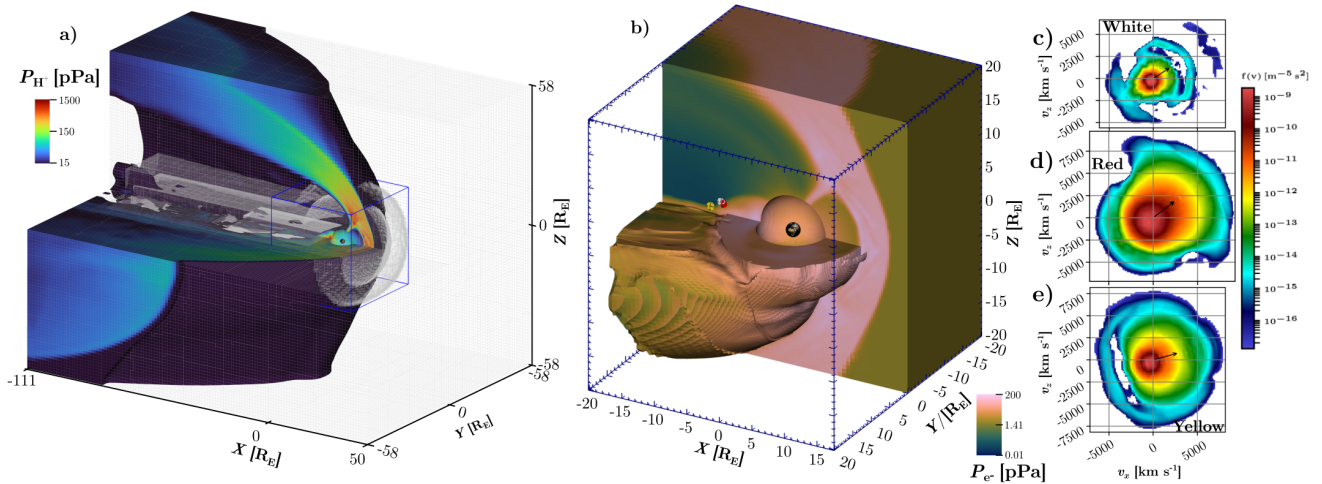


Figure 1. (a) ~~Vlasiator simulation Overview~~ of the 3D-3V magnetospheric ~~Vlasiator~~ simulation, grid refinement regions (gray grids) and the interior of the magnetosphere, with the extracted eVlasiator domain shown as a blue box. ~~Proton pressure is shown on the surfaces.~~ (b) Overview of the eVlasiator simulation at its final state, with electron pressure shown on the bow shock, magnetopause, and the southern lobe. Earth is visible inside the spherical inner boundary of the simulation domain. (c–e) ~~Sample Examples of~~ electron VDFs from eVlasiator on the midnight meridian, from the white, red, and yellow markers in panel b, showing ~~diverse distribution functions and~~ field-aligned beams ~~on field lines connected to precipitation regions.~~

2.3 Construction of the auroral-electron forcing dataset

155 2.3.1 Mapping of the ionosphere grid to the eVlasiator simulation domain

To obtain the forcing dataset for WACCM consisting of precipitating electron fluxes at auroral energies (0.05–50 keV) as a function of magnetic local time (MLT) and geomagnetic latitude (MLAT), we first construct a MLT–MLAT grid at ionospheric altitudes, which we map to the magnetosphere. The procedure is similar to that presented in Grandin et al. (2023), with a notable difference to account for the specific setup of the eVlasiator run. It is described in detail in Appendix A.

160 It is worth highlighting that the obtained precipitating electron fluxes are the result of the physical processes described in the eVlasiator simulation. These do not include some of the important processes for auroral electron acceleration and pitch-angle scattering, such as ~~inner-magnetospheric waves or~~ field-aligned potential drops above the ionosphere ~~or inner-magnetospheric waves.~~ As a consequence, the precipitating fluxes extracted from the eVlasiator run are ~~lower than in might differ from~~ reality. For this reason, ~~calibration scaling~~ with observational data has been performed as explained in the next section.

165 2.3.2 Calibration Scaling of the eVlasiator fluxes with DMSP observations

To calibrate-scale the eVlasiator differential number fluxes with observations, we use two pairs of overpasses of Defense Meteorological Satellite Program (DMSP) spacecraft during similar driving conditions. Each pair contains a polar cusp overpass in the northern hemisphere (NH) and a nightside oval overpass in the southern hemisphere (SH). The dates of the events are 1 August 2011 (06:00–07:30 UT) and 10 October 2015 (05:30–06:30 UT). We use measurements from the Special Sensor J
170 (SSJ) instrument (Redmon et al., 2017), which provides particle counts within a field of view spanning $4^\circ \times 90^\circ$ in the observation plane (Hardy et al., 2008). Precipitating electron differential number fluxes are collected in 19 logarithmically spaced energy bins between 30 eV and 30 keV. For the first (second) event, SSJ measurements from the DMSP-F16 (F17) and DMSP-F18 (F17) spacecraft are considered. These two events were previously used for precipitating proton flux comparison between Vlasiator and observations in Grandin et al. (2023).

175 A detailed description of the eVlasiator flux calibration-scaling based on the DMSP observations is given in Appendix ~~??B~~. In summary, we apply an energy-dependent correction factor to the eVlasiator fluxes in the polar cusp and in the nightside auroral oval. There is one such correcting function for the cusp fluxes, $\alpha_{\text{day}}(E)$, and another one for the nightside fluxes, $\alpha_{\text{night}}(E)$. We first calculate the ratio between the measured differential number fluxes by DMSP/SSJ and those obtained with eVlasiator, along the DMSP orbit, separately for the dayside and nightside overpasses. Then, for a given electron energy, we
180 examine the distribution-of-values-taken-by the obtained ratios along-the-DMSP-orbits, and retain a certain quantile-for-which-we-fit-a-polynomial-function (percentile, QX = Xth percentile of along-orbit eVlasiator-over-DMSP differential number flux. We obtain a curve of QX as a function of energy). ~~Which quantile we retain is determined such that the~~ the precipitating electron energy, which we fit in logarithmic scale with a third-order (for the dayside) or second-order (for the nightside) polynomial function. The choice of percentile X to consider for QX is a free parameter in the adjustment, which we constrain by aiming
185 for-obtaining-a ratio between the integrated energy fluxes ~~is~~ (corrected eVlasiator over DMSP) as close to one as possible (see Appendix B4 for details). We have determined that the 61st (67th) quantile-percentile optimally fulfils this condition for the dayside (nightside) ratios. Note that, to calculate the integrated energy flux of eVlasiator precipitation, we use the real electron mass, as the modified mass used for the simulation is cancelled out in the expression of the differential number flux (see Eq. (1)). Hence, no further mass correction is needed to infer the integrated energy flux. Finally, once the scaling ratios
190 $\alpha_{\text{day}}(E)$ and $\alpha_{\text{night}}(E)$ are determined, we use them to calculate the corrected eVlasiator differential number fluxes in the corresponding region (dayside or nightside). This is done by multiplying the original fluxes by the ratios. Note that, while the fitting procedure is performed in log-log scales, the correction coefficients are indeed applied in the linear domain.

2.4 Whole Atmosphere Community Climate Model

The Whole Atmosphere Community Climate Model (WACCM) is a global ~~3-D~~ 3D chemistry-climate model that covers the
195 altitude range from the surface up to about 140 km. The model incorporates various physical processes and interactions within the atmosphere, including dynamics, chemistry, radiation, and their interactions with the Earth's surface and external forcings such as solar radiation and greenhouse gases (Marsh et al., 2013; Gettelman et al., 2019). Here, we use WACCM-D, a variant of

WACCM that enhances standard ~~parameterizations~~parameterisations of HO_x and NO_x production by incorporating a comprehensive ionospheric chemistry. This alteration aims to better replicate the observed impacts of energetic particle precipitation on the composition of the mesosphere and upper stratosphere (Verronen et al., 2016; Andersson et al., 2016). We conducted specified dynamics simulations (SD) where horizontal winds, temperature, pressure, surface stress and heat fluxes are adjusted to 3 hourly Modern-Era Retrospective Analysis for Research and Applications (MERRA-2) reanalysis data (Molod et al., 2015). The model is constrained by the reanalysis data up to about 50 km while the dynamics are free-running at altitudes above. We use version 6 of the model with a latitude × longitude resolution of 0.95° × 1.25°.

2.4.1 Energetic particle forcing in WACCM and implementation of auroral electrons from eVlasiator

In WACCM-D, ionisation by EPP drives the initial production rates of ions and neutrals due to particle impact ionisation, dissociative ionisation, and secondary electron dissociation (Verronen et al., 2016, Table 1). These rates are incorporated in the WACCM ion and neutral chemistry scheme, connecting EPP forcing to the NO_x and ozone concentrations. As a default, WACCM input of solar and geomagnetic forcing is taken as recommended for the Coupled Model Intercomparison Project Phase 6 (CMIP6) (Matthes et al., 2017). In addition to total and spectral irradiance, this data set also includes atmospheric ~~ionization~~ionisation rates due to solar protons, medium-energy electrons, and galactic cosmic rays. ~~The auroral electron precipitation, however, is~~ These CMIP6 particle forcings are input into WACCM as daily atmospheric ion production rates. The solar proton forcing is based on satellite observations of proton fluxes at energies 1–300 MeV (Matthes et al., 2017), while the medium-energy electron forcing uses the electron precipitation model by van de Kamp et al. (2016) for energies 30–1000 keV. We have included these recommended CMIP6 solar and geomagnetic forcing data in all our WACCM-D simulations.

Unlike the solar protons, medium-energy electrons, and galactic cosmic rays, WACCM’s auroral electron forcing is not directly input as ionisation rates. Instead, the auroral electron precipitation forcing is driven by the daily geomagnetic Kp index, and based on the auroral model by Roble and Ridley (1987). The ionisation from auroral electrons is represented by a Maxwellian energy distribution and a characteristic energy of 2 keV (Roble and Ridley, 1987). Further, to account for the impact of electron forcing above its altitude range, WACCM- WACCM also makes use of the three-dimensional nitric oxide empirical model (NOEM) to set ~~NO at the model~~NO concentration at WACCM’s upper boundary. NOEM The inclusion of NOEM in WACCM simulations accounts for the production of NO above WACCM’s altitude range. NOEM is driven by Kp , day of year, and solar 10.7 cm radio flux (Marsh et al., 2004). As such, NOEM also includes effects of auroral electrons on NO_x. However, since the auroral electrons mostly precipitate in the lower thermosphere (95–120 km) (e.g. Matthes et al., 2017), the main impact of auroral electrons falls well within WACCM’s altitude range. For this reason we focus on replacing the default Kp -driven auroral model by Roble and Ridley (1987) with auroral forcing from eVlasiator in our WACCM simulations, and maintain NOEM as part of the WACCM setup.

In order to replace the default parametrisation of the auroral electron forcing within WACCM, a new ion production rate (IPR) input code was applied (Häkkinä, 2024). The new IPR code turns off the Kp -driven auroral model, and enables inputting auroral electron forcing as ionisation rates, similar to the other energetic particle forcing inputs. Since the eVlasiator auroral electron fluxes were available on a magnetic local time dependent grid, we implemented this as part of the new IPR code.

enabling MLAT × MLT ionisation forcing. In addition to geomagnetic latitude, support was included for L-shell × MLT grids, as well as multiple time steps per day. A separate version of the IPR code which does not turn off the K_p aurora was also created for possible future use.

235 **2.4.2 Atmospheric ionization rates**

~~Using the eVlasiator electron energy–flux spectra, we calculated corresponding forcing for our WACCM atmospheric simulations. In WACCM-D, ionization by EPP drives the initial production rates of ions and neutrals due to particle impact ionization, dissociative ionization, and secondary electron dissociation (Verronen et al., 2016, Table 1). These rates are incorporated in the WACCM ion and neutral chemistry scheme, connecting EPP forcing to the and ozone concentrations.~~

240 ~~The atmospheric ionization rates were calculated at magnetic latitudes between 63 and 88 in both hemispheres with one degree spacing. A half-an-hour temporal resolution was used for the magnetic local time throughout the day. Electron energy range from 50 to 50 was considered with 32 individual grid points.~~Using the eVlasiator electron energy–flux spectra, we calculated corresponding forcing for our WACCM atmospheric simulations. We made use of the method of ~~parameterized electron impact ionization~~parameterised electron impact ionisation by Fang et al. (2010). ~~Atmosphere for the calculation was~~
245 ~~calculated using the NRLMSIS-00 model by Picone et al. (2002).~~ This is the same method that was used to create electron ~~ionization~~ionisation rates for the ~~Coupled Model Intercomparison Project Phase 6~~CMIP6 (van de Kamp et al., 2016; Matthes et al., 2017). Here, however, the electron flux data are not from a proxy model based on satellite observations but from the eVlasiator magnetospheric simulations. The ionisation rate calculation requires an atmosphere which was taken from the NRLMSISE-00 model by Picone et al. (2002). To ensure consistency with the WACCM atmosphere, and in accordance with
250 the CMIP6 procedure (Matthes et al., 2017), the ionisation rates are then divided by the NRLMSISE-00 mass density. When the rates are used as input, they are multiplied by the WACCM atmospheric mass density profiles by the new IPR code.

Since the method by Fang et al. (2010) is derived for precipitating electrons at energies > 100 eV we limited the energy spectrum of the auroral electron fluxes from eVlasiator accordingly. We also limited the higher end of the eVlasiator electron energy spectrum: Since the CMIP6 medium-energy electron precipitation already accounts for electrons at energies > 30 keV,
255 we removed energies 30–50 keV from the eVlasiator-derived electron flux energy range to prevent possible double counting. Thus, though the auroral electron fluxes were obtained from eVlasiator on an energy range from 50 eV to 50 keV with 32 logarithmically spaced individual grid points, the final ionisation rate calculation was performed at energies 100 eV–30 keV. The atmospheric ionisation rates were calculated at magnetic latitudes between 63° and 88° in both hemispheres with one degree spacing. A half-an-hour resolution was used for the magnetic local time throughout the day. Figure 2 shows an example
260 of eVlasiator spectra and corresponding atmospheric ~~ionization~~ionisation rates. Large differences in fluxes at different geomagnetic latitudes result in a similarly large range of ~~ionization~~ionisation. According to the spectral energy range (electron energies < ~~50~~30 keV), the bulk ~~ionization~~ionisation is restricted to altitudes above 90 km.

2.4.2 WACCM simulation setup and output

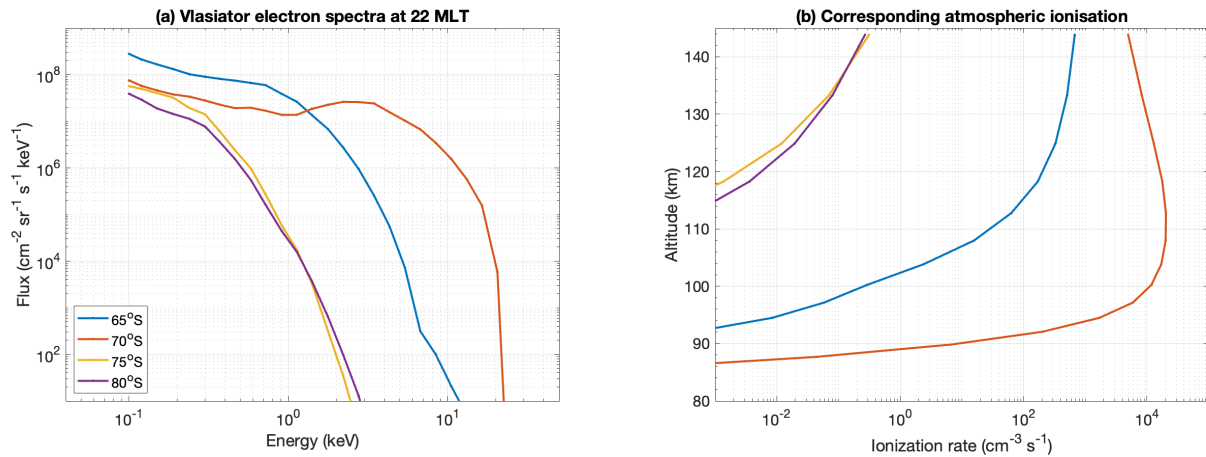


Figure 2. (a) eVlasiator electron spectra at 22 hours of magnetic local time at four ~~Southern Hemisphere~~ southern hemisphere magnetic latitudes ~~at energies 0.1–30 keV~~. (b) Corresponding atmospheric ~~ionization~~ ionisation rates.

All WACCM simulations were set up using the recommended CMIP6 solar and geomagnetic forcing (Matthes et al., 2017).
 265 WACCM-D was run from January 2005 to June 2006 in order to cover both southern and northern hemispheric winters. In this study, we consider daily average outputs of the ionization ~~paper we consider outputs of daily average and instantaneous auroral ionisation~~ rates, as well as ~~daily average~~ NO_x and ozone concentrations.

In order to better implement the eVlasiator derived ionization rates, we input the forcing on a magnetic local time dependent grid. For this purpose, we created a modification for WACCM, which enables MLAT \times MLT ionization forcing and turns off
 270 the Kp index driven parameterized aurora, in order to fully replace WACCM’s default aurora with eVlasiator (Häkkinä, 2024). In addition to geomagnetic latitude, support for L-shell \times MLT grids is also included, as well as a version that does not turn off the Kp aurora. The MLT-dependency code requires daily forcing files, but supports multiple time steps per daily file.

Two ~~The main~~ WACCM-D simulations were performed using the MLT-dependent ionization input. First, a simulation with the simulation of this study with the eVlasiator-derived ionization rates as input ~~ionisation rates as auroral electron forcing~~
 275 (VLAS) was performed using the new IPR code for WACCM described in Sect. 2.4.1. We input the auroral ionisation rates in WACCM-D on a MLAT \times MLT grid of $1^\circ \times 0.5\text{h}$ resolution (VLAS). For each day of the simulation we use the same ionization ionisation data, since only one time step was available from the eVlasiator output. The second MLT-dependent run was a reference simulation. Additionally, a reference run (REF) was performed using the new IPR code, with the ionization ionisation input from auroral electrons set to 0 at all gridpoints. This way the REF run has no auroral input and no ~~as well as~~
 280 the Kp -driven parameterized aurora. We also performed simulations aurora being turned off.

For comparisons with the eVlasiator auroral electron forcing, simulations were carried out using WACCM’s parameterized Kp -driven aurora, to use as comparisons against the eVlasiator auroral forcing ~~parametrised Kp -driven aurora~~. Since the VLAS run was performed using the same data every day, we use a fixed Kp value for the comparison runs. We performed 6 separate WACCM-D runs, each with a different, fixed Kp index value from 0 to 5 (KP0–KP5), but we present here ~~only the runs KP1~~

285 ~~and KP2~~ mostly the runs KP1–KP3, since those most closely correspond to the level of ~~ionization~~ auroral ionisation and impact found in the ~~eVlasiator aurora, as well as~~ VLAS case. It should be noted that WACCM's default auroral electron forcing is such that using $Kp = 0$ does not result in no auroral forcing (see Fig. 4b), making the KP0 and ~~KP5 runs in order to give a range of the Kp -driven aurora. To ensure comparability, REF runs materially different.~~

As stated in Sect. 2.4.1, WACCM uses NOEM to set the NO concentration at the model upper boundary during simulations. ~~Since NOEM is driven by the Kp indices were also fixed for the MLT-dependent simulations, as index, this makes it necessary to also fix Kp affects the background levels of in the model through NOEM. indices for the VLAS and REF runs to ensure comparability with the KP simulations.~~ The Kp value was fixed to 0 for the REF run to create minimal conditions for comparisons. ~~For VLAS, we considered, and to 2 for the VLAS run. The choice of $Kp = 2$ for VLAS was made considering the DMSP overpasses used for the calibration scaling of the eVlasiator electron fluxes, which took place during Kp index values~~ around 2 and 3, for 1 August 2011 and 10 October 2015, respectively. ~~We used the fixed the Kp index 2 for the VLAS run.~~ All the WACCM-D simulations presented here and their differences are given in Table 1.

Table 1. The WACCM-D simulation runs and differences in their setups.

simulation	description	aurora	Kp index (fixed)
REF	Reference run with no aurora	none	0
KP0	Default WACCM-D run with fixed $Kp = 0$	parameterized <u>parameterised</u>	0
KP1	Default WACCM-D run with fixed $Kp = 1$	parameterized <u>parameterised</u>	1
VLAS	Main run with eVlasiator aurora	eVlasiator	2
KP2	Default WACCM-D run with fixed $Kp = 2$	parameterized <u>parameterised</u>	2
KP5 <u>KP3</u>	Default WACCM-D run with fixed $Kp = 5$ <u>$Kp = 3$</u>	parameterized <u>parameterised</u>	5 <u>3</u>

3 Results

3.1 Auroral electron precipitation

3.1.1 Auroral electron fluxes from eVlasiator

300 Figure 3 shows the integrated parameters of the auroral electron precipitation forcing dataset obtained from eVlasiator, after the ~~calibration scaling~~ with DMSP/SSJ observations (see Sect. ~~??~~ 2.3.2). Each panel gives the data as a function of geomagnetic latitude (radial coordinate) and MLT (angular coordinate). Figures 3a and 3b show the precipitating electron integrated energy flux in the northern and southern hemispheres, respectively. We can identify the cusp region on the dayside, between 70° and 80° MLAT and within 9–15 MLT, with flux magnitudes on the order of $10^8 \text{ keV cm}^{-2} \text{ s}^{-1} \text{ sr}^{-1}$. On the nightside,
 305 the integrated energy flux peaks in the pre-midnight sector and within 65–70° MLAT, reaching magnitudes on the order of $10^9 \text{ keV cm}^{-2} \text{ s}^{-1} \text{ sr}^{-1}$. The forcing is very symmetrical on the nightside, whereas slight differences can be noted in the polar

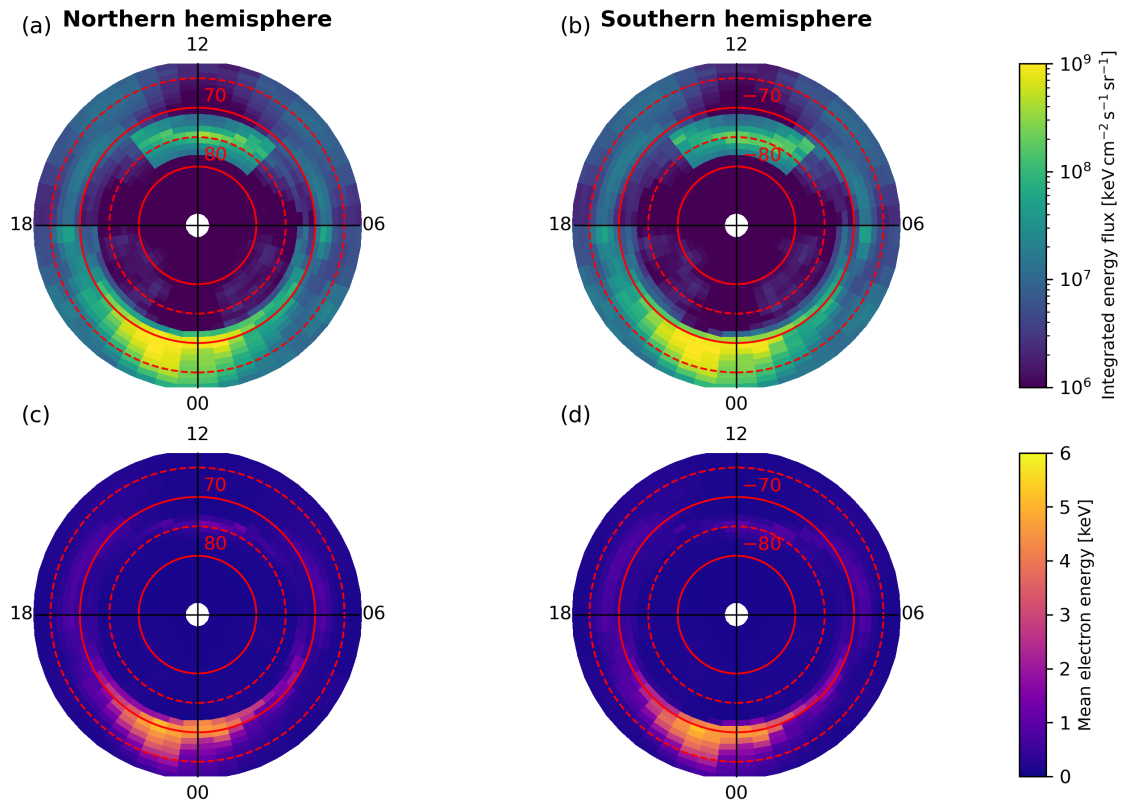


Figure 3. Polar view of integrated parameters of auroral electron precipitation in the eVlasiator run, after [calibration scaling](#) with DMSP/SSJ observations (see Sect. [2.3.2](#)). (a–b) Precipitating electron integrated energy flux in the northern and southern hemispheres. (c–d) Mean precipitating electron energy in the northern and southern hemisphere. In each panel, the radial coordinate is geomagnetic latitude, and the angular coordinate is magnetic local time.

cusps – these results are similar to those obtained for auroral proton precipitation and discussed in Grandin et al. (2023). Figures 3c and 3d present the mean precipitating electron energy. Values are below 1 keV on the dayside and reach up to 5 keV on the nightside.

310 3.1.2 Ionisation rates from WACCM-D

Comparisons of the [ionization-ionisation](#) rates from eVlasiator and the Kp [parameterization-parametrisation](#) are shown in Figs. [4–5–6](#) for the northern hemisphere. The vertically integrated [ionization-ionisation](#) rates in Fig. 4 show the full auroral oval. ~~While the on geographic coordinates on 1 Jan 2006;~~ panels a–e depict daily average ionisation, and panels f–j show

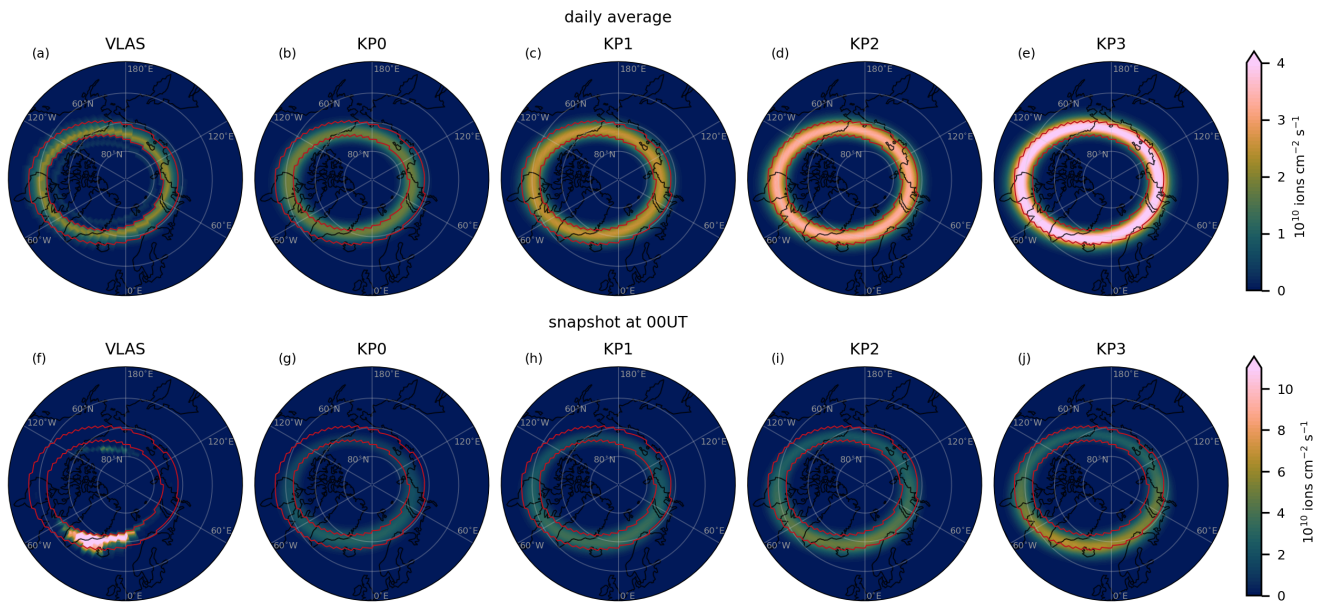


Figure 4. Vertically integrated auroral ionisation rates as output from WACCM-D on geographic coordinates for the northern hemisphere (geographic latitude $>50^{\circ}\text{N}$), 1 Jan 2006–2006, (a–e) daily average and (f–j) snapshot at 00 UT. (a, f) VLAS, (b, g) KP0, (c, h) KP1, (d, i) KP2, (e, j) KP3. For comparisons, the red lines indicate the region where the VLAS integrated daily average auroral ionisation exceeds 0.5×10^{10} ions $\text{cm}^{-2} \text{s}^{-1}$.

instantaneous ionisation at 00 UT. Figures 5–6 show the ionisation along the geographic longitude 36.25°W , which has the maximal instantaneous eVlasiator-derived auroral ionisation rates at 00 UT.

In the integrated daily average ionisation rates (Fig. 4a–e) the eVlasiator-derived auroral ionisation rates roughly match the location of the Kp -driven ionisation rates, but the Kp parametrisation has a wider spread within the oval than the oval is much more sharply defined than the parameterized auroral precipitation. The sharpness eVlasiator auroral ionisation. Especially on the poleward edge of the auroral oval the eVlasiator-derived forcing seems to have a sharp drop-off, which can also be seen in the latitudinal–latitudinal–altitudinal extent of the aurora–auroral ionisation shown in Fig. 5, which shows the logarithm of the ionization rates at longitude 90°E for the VLAS and 5b. The sharpness is even more apparent in the instantaneous ionisation rates from eVlasiator, Figs. 4f, 6b. The eVlasiator nightside sharp poleward edge is in line with previous studies (e.g. Newell et al., 1996), while the Kp parametrisation by Roble and Ridley (1987) on the other hand includes so-called “polar rain” electron precipitation, which extends as a uniform distribution over the geomagnetic pole, and thus “softens” the poleward edge of the auroral electron forcing. The polar rain can be seen for the KP2 runs. The auroral ionization rates peak at roughly the same latitude, but the run in the cross-sections in Figs. 5c, 6c extending towards the pole from the auroral oval region.

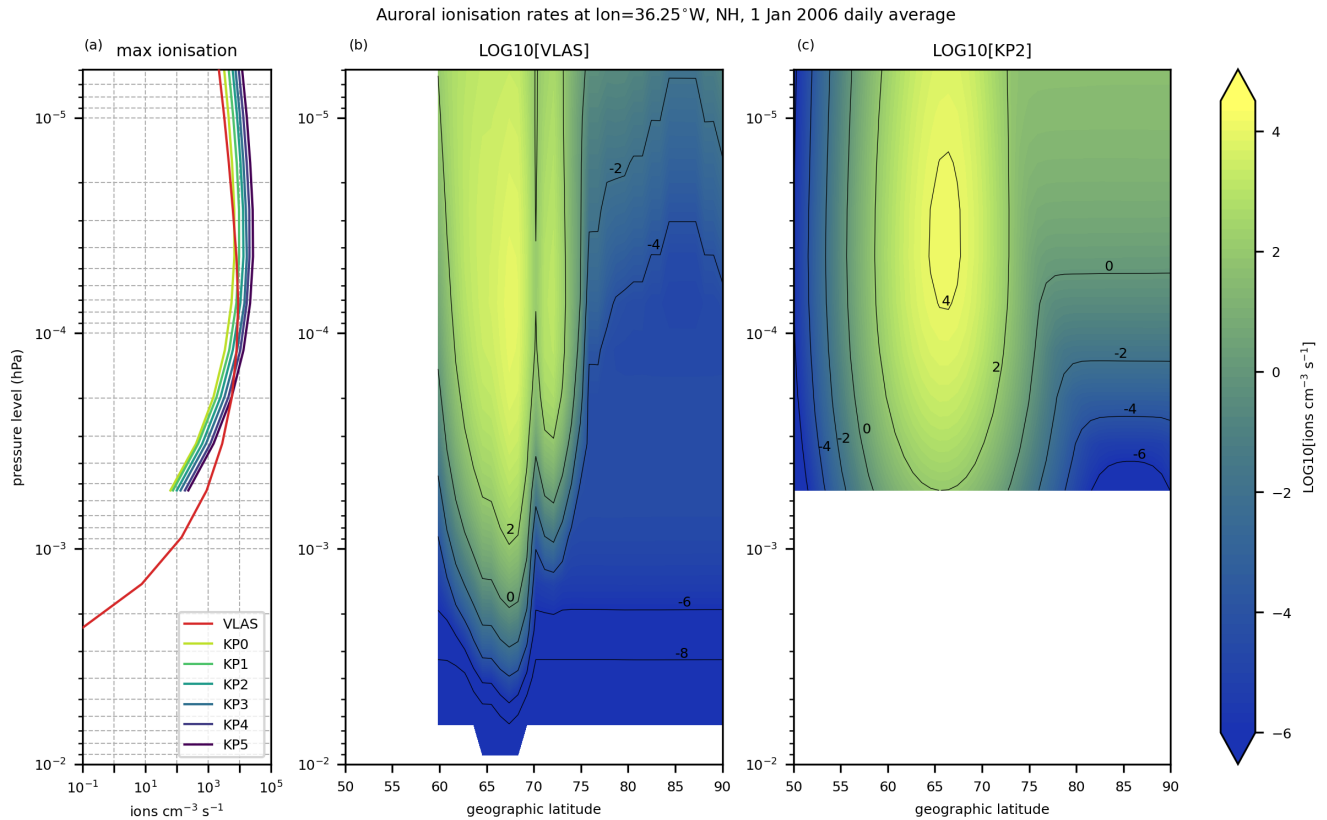


Figure 5. The daily average auroral electron ionisation rates along geographic longitude 36.25°W on 1 Jan 2006. (a) Maximum ionisation rates from auroral electron forcing at each altitude along the longitude 36.25°W for the VLAS and KP0–KP5 simulations. (b–c) Geographic latitude–altitude extent of the auroral electron forcing output from WACCM-D simulation runs, as LOG10 of the auroral ionisation rates for the (ab) VLAS and (bc) KP2 on 1 Jan 2006. The LOG10 of the auroral ionization rates at longitude 90E simulations.

330 The eVlasiator forcing also shows a slight secondary peak in the daily average ionisation on the poleward side in Fig. 4a, and more clearly in the cross-section in Fig. 5b. Comparing the daily averages to the instantaneous eVlasiator-derived ionisation, shown in Fig. 4f, we see that the two-peak structure in the daily average ionisation results from the dayside and nightside auroral ionisations. The secondary peak comes from the dayside ionisation forcing being located closer to the (geomagnetic) pole than the nightside ionisation.

335 The clear separation into the nightside and dayside ionisation peaks is also a clear difference between the eVlasiator auroral electron forcing and the *Kp* parameterization has a much wider latitudinal spread. This difference parametrisation. While similar to the eVlasiator ionisation in that the nightside has higher ionisation rates than the dayside, the parameterisation shows a continuum between day and night. The eVlasiator on the other hand has two clear peaks along the auroral oval, dayside much

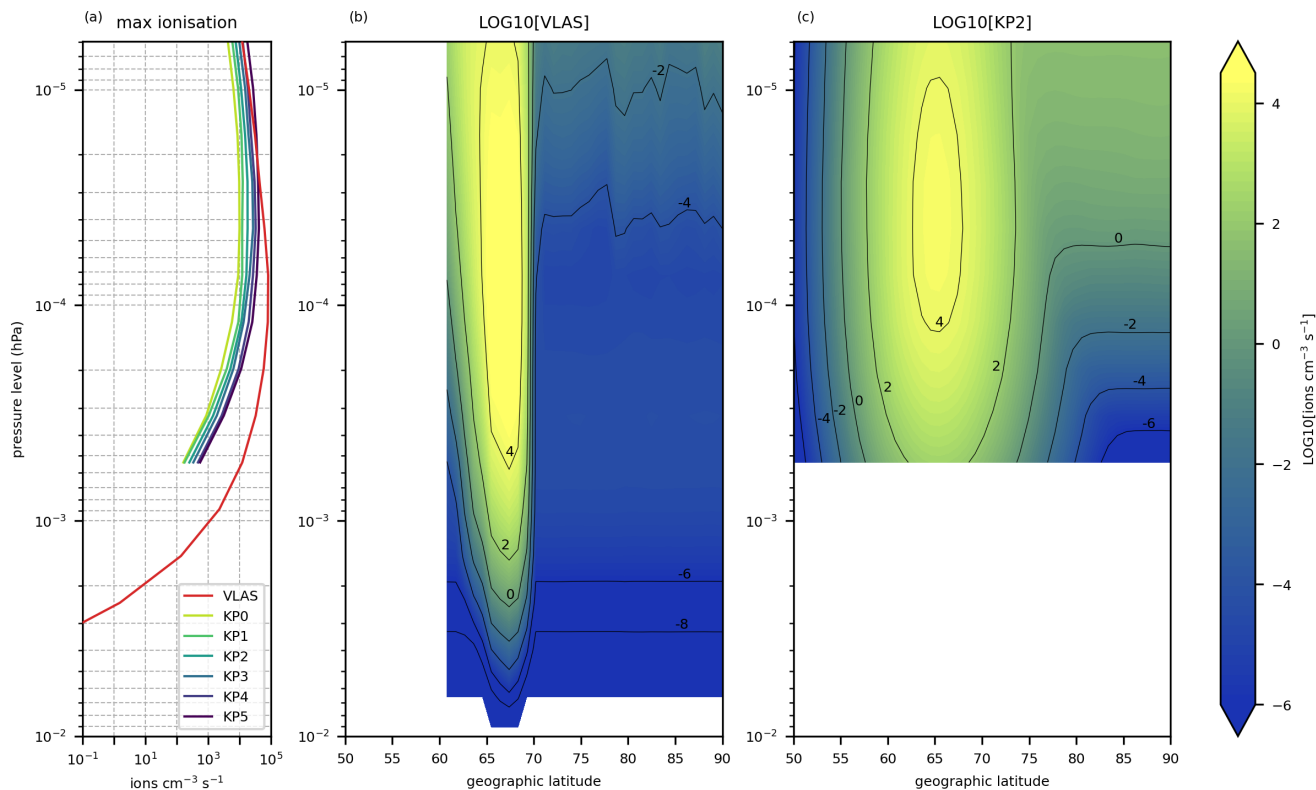


Figure 6. Same as Fig. 5, but for instantaneous ionisation rates on 1 Jan 2006 at 00 UT.

weaker than the nightside, with little ionisation in the dusk and dawn sectors. This structure of day/night peaks matches with how the DMSP scaling of the eVlasiator fluxes was applied.

There is also a difference on the equatorward side of auroral oval between the eVlasiator-derived ionisation and the Kp parameterisation, as the eVlasiator auroral electron forcing stops. This difference in extent results from the limitation in the latitudinal coverage made possible by the used eVlasiator run, as the cutoff latitude of 63° MLAT corresponds to the mapping of the innermost considered locations in the magnetospheric domain ($4.8 R_E$; see Appendix A). In future runs with an inner boundary closer to the Earth's surface, this sharp cutoff near the auroral oval's equatorward boundary could be avoided. The eVlasiator ionization rates also have a slight secondary peak on the poleward side, while the Kp parameterization clearly only has one peak.

The eVlasiator auroral ionisation forcing reaches deeper into the atmosphere down to around 0.01 hPa (~ 80 km), while the Kp parameterization stops at around 5×10^{-4} hPa (~ 95 km), the lower boundary of the parameterization. Though the eVlasiator ionisation rates are negligible at the 0.01 hPa level, the tapering off of the aurora towards lower altitudes is more gradual compared to the Kp parameterization.

350 eVlasiator forcing also peaks at a slightly lower altitude compared to the Kp parametrisation. This can be seen in Fig. 5a, which
shows the maximum ionisation rates at each altitude for the VLAS and KP0–KP5 simulations. We can also see that towards
the model top eVlasiator on average produces less ionisation than even the KP0 case, but in the instantaneous ionisation rates
VLAS has more ionisation than KP3 throughout the vertical extent of the Kp parametrisation (Fig. 6a). The nighttime peak
of the eVlasiator-derived ionisation is much stronger than the Kp parametrisation, with more than an order of magnitude
355 difference even to KP5 at 95 km altitude.

3.2 Atmospheric impact

Figure 7 shows the ~~polar-cap-averaged-altitude-integrated~~ NO_x response averaged over the polar region (geographic latitude
> 60°) ~~-,altitude-integrated-response-~~ in the auroral runs relative to the REF run with no auroral electron forcing. The polar
averages have been calculated by weighting with the cosine of the geographic latitude to account for the increasing gridpoint
360 density towards the poles. For both SH and NH we clearly see the NO_x impact during the winter season for all the auroral
forcing scenarios. The effect is naturally strongest in the thermosphere, where the auroral electrons have a direct impact, with
the eVlasiator auroral precipitation causing a NO_x increase of up to ~~200%-in-215%~~ (from 1.62×10^{14} molecules cm⁻² in REF
to 5.13×10^{14} molecules cm⁻² in VLAS) in the SH lower thermosphere (~85–125 km). The descent of the produced NO_x
can also clearly be seen in the mesosphere (~50–85 km) and upper stratosphere (~25–50 km), where NO_x is increased by up
365 to 59% (from 3.06×10^{14} molecules cm⁻² to 4.87×10^{14} molecules cm⁻²) and 7.8% (from 1.61×10^{15} molecules cm⁻² to
 1.74×10^{15} molecules cm⁻²), respectively. The descent is seen in the lag when comparing the peak occurrence times, as the
strongest SH thermospheric, mesospheric, and stratospheric NO_x impacts occur in June, July, and August, respectively. The
impact also grows weaker during the descent, since the background levels of NO_x are ~~higher-at-generally higher at the~~ lower
altitudes, and not all the produced NO_x descends.

370 Comparing the Kp -driven auroral precipitation runs, there is a clear scaling effect in Fig. 7: the NO_x impact grows stronger
with increasing Kp . Even in the KP0 case the SH lower thermospheric NO_x is increased by ~~more than 90%-,with-KP5~~
98% (from 1.35×10^{14} molecules cm⁻² to 2.68×10^{14} molecules cm⁻²), with KP3 reaching an increase of 680%-over 380%
(from 1.68×10^{14} molecules cm⁻² to 8.12×10^{14} molecules cm⁻²) in the SH. The eVlasiator ~~aurora-auroral forcing~~ run
375 (VLAS) corresponds to the KP1 and KP2 simulations in terms of the NO_x impact, often coming closer to the KP1 sce-
nario. This is despite the weaker daily average ionisation rates seen in Fig. 4 from the DMSP-scaled eVlasiator electron
fluxes-being-calibrated-using-DMSP-observations-during-. It seems that the strong nighttime peak ionisation in the eVlasiator
run compensates for the lack of continuous auroral forcing seen in the Kp index values of ~2–3, and the Kp index being
fixed to 2 for the VLAS WACCM-D simulation. parametrisation. While the VLAS impact does occasionally reach the KP2
level, with the NH mesospheric and upper stratospheric responses being very similar between the two simulations, it is
380 possible that the parameterization is overestimating the auroral electron forcing at low-The reverse may also be true: the Kp
values-parametrisation may be compensating for a lack of high enough ionisation rates by applying relatively high ionisation
throughout the day.

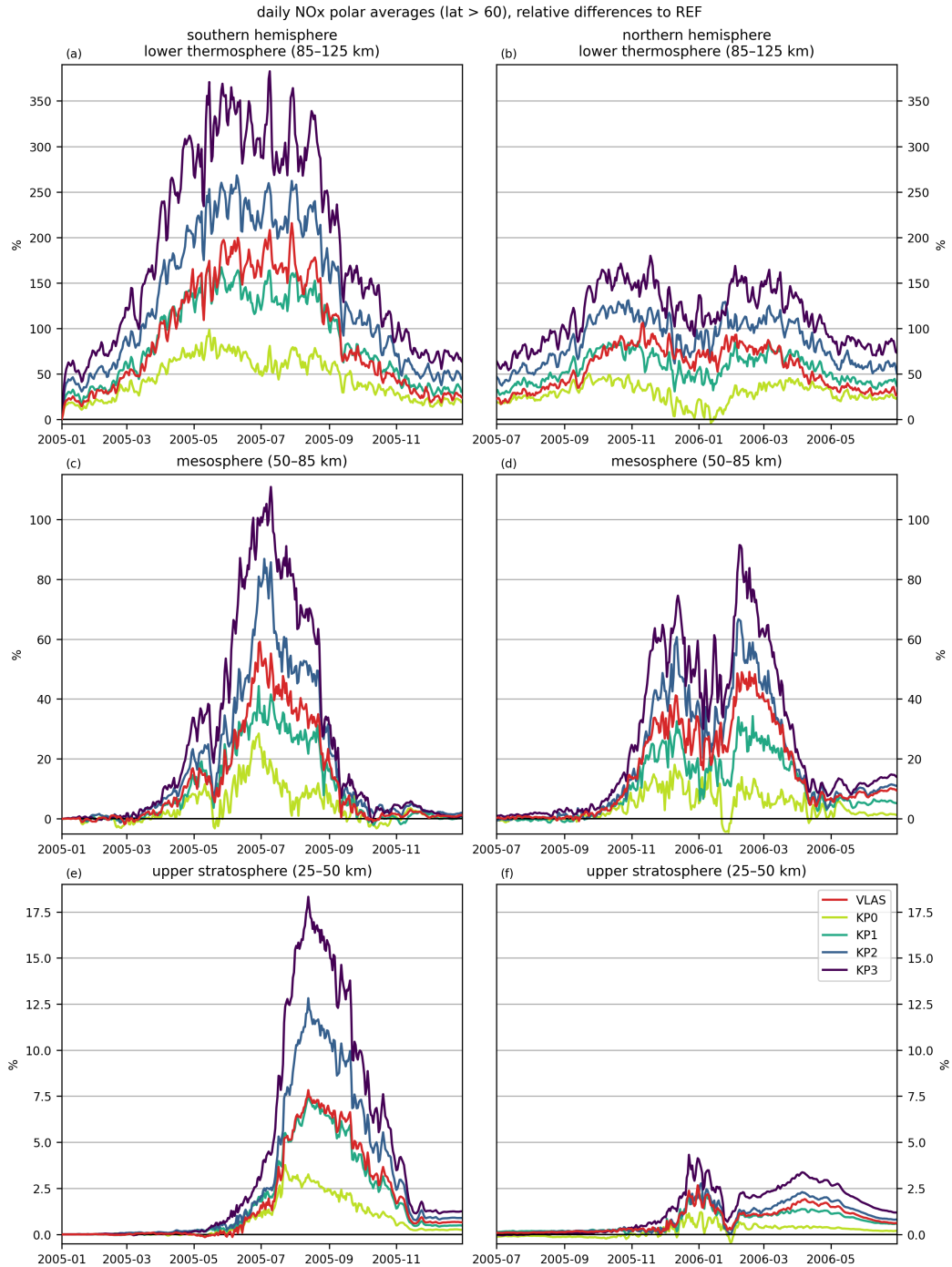


Figure 7. Auroral impact on NO_x concentrations: Polar cap-averages (geographic latitude > 60°) averages of the integrated (a–b) lower thermosphere, (c–d) mesosphere, and (e–f) upper stratosphere for the (a, c, e) SH and (b, d, f) NH winters. Relative difference of the auroral precipitation simulation runs (colours) compared to the REF run-with-no-auroral-electron-foreingsimulation. Lower thermosphere integrated from 3×10^{-3} hPa to 1×10^{-5} hPa (~ 85 – 125 km), mesosphere from 1 hPa to 3×10^{-3} hPa (~ 50 – 85 km), and upper stratosphere from 30 hPa to 1 hPa (~ 25 – 50 km).

The strongest impacts are consistently seen in the southern hemisphere. The differences between the hemispheres can be explained by the instability of the polar vortex in the NH, as well as the sudden stratospheric warming (SSW) that occurred in mid-January 2006 (Manney et al., 2008; Butler et al., 2015). This is likely the cause of the double peaks in the NO_x impact in the NH, since the anomalous dynamical conditions due to SSW result in ~~higher-increased~~ NO_x levels ~~also in the REF simulation in all the WACCM simulations, including REF~~, so the relative differences ~~are smaller-decrease~~ during the SSW. Later in the winter strong downward transport resumed and caused a sharp increase of NO_x in the mesosphere (Randall et al., 2009), which is also seen in our simulations.

The difference in the descent of NO_x between the two hemispheres can also be seen in the NO_x profiles shown in Fig. 8. The profiles are averaged over the polar region (geographic latitude > 60°) with cosine weighting, as in Fig. 7, and additionally over the winter months for each hemisphere. In the NH there is very little difference between the auroral runs and the REF simulation at stratospheric altitudes, whereas in the SH the runs are distinguishable from each other down to about 7 hPa level. This is due to the more efficient downward transport of NO_x within the polar vortex in the SH than NH. As in Fig. 7, the VLAS NO_x profiles most closely correspond to the KP1 and KP2 scenarios. We also see the scaling of the Kp parametrisation as the impact get progressively stronger from KP0 to KP3.

For more details on the spatial distribution of the auroral precipitation NO_x impact, Fig. 9 shows the REF wintertime averages in both hemispheres, and the increase in the VLAS simulation relative to REF. ~~From the The REF number densities we see that there is show~~ a difference in the ~~vertical profiles-vertical distribution of~~ NO_x between the hemispheres, ~~also visible in the profiles in Fig. 8~~. In the north, NO_x has a ~~stronger~~ polar peak at thermospheric altitudes, ~~but in the south the peak is located lower, in the mesosphere. The~~ than SH, whereas at mesospheric altitudes on SH has more NO_x than NH. ~~The NH thermospheric peak is visible in the REF NO_x profile (Fig.8b), while at mesospheric altitudes there seems to be a drop in the REF NO_x concentration. The mesospheric NO_x drop does not seem to be present in the SH (Fig.8a), leading to the difference in NO_x levels seen in Fig.9b, e. The~~ occurrence of a solar proton event in mid-May 2005 likely contributes to the SH ~~peak~~ NO_x ~~in the mesosphere~~, as the proton precipitation penetrates to mesospheric altitudes. The increased NO_x production and the longer chemical lifetime in the winter pole allows NO_x to accumulate in the SH mesosphere. In the NH the SSW may also be leading to disruption in the vertical transport of NO_x so that a greater proportion of produced NO_x stays in the thermosphere rather than being transported downward.

The spatial distribution of NO_x in the REF simulation also shows the difference in the stability of the polar vortices. In the SH the mesosphere and upper stratosphere NO_x is rather symmetrically distributed around the pole. Since the southern polar vortex is very stable, and there is no auroral precipitation, the production in the thermosphere is driven by solar radiation. On the, due to the stable polar vortex during the winter. In the NH, on the other hand, in the NH the peaks and troughs are distributed the less stable polar vortex results in both the mesospheric and upper stratospheric NO_x concentrations being distributed assymmetrically and off-pole, and there are shifts in spatial location between the altitude layers. This is caused by the less stable nature of the NH. The mesospheric NO_x peak is also slightly shifted compared to the stratospheric NO_x trough, indicating vertical shifts in the polar vortex. The SSW that occurred during the 2005–2006 NH winter likely adds to the effect instability of the NH polar vortex.

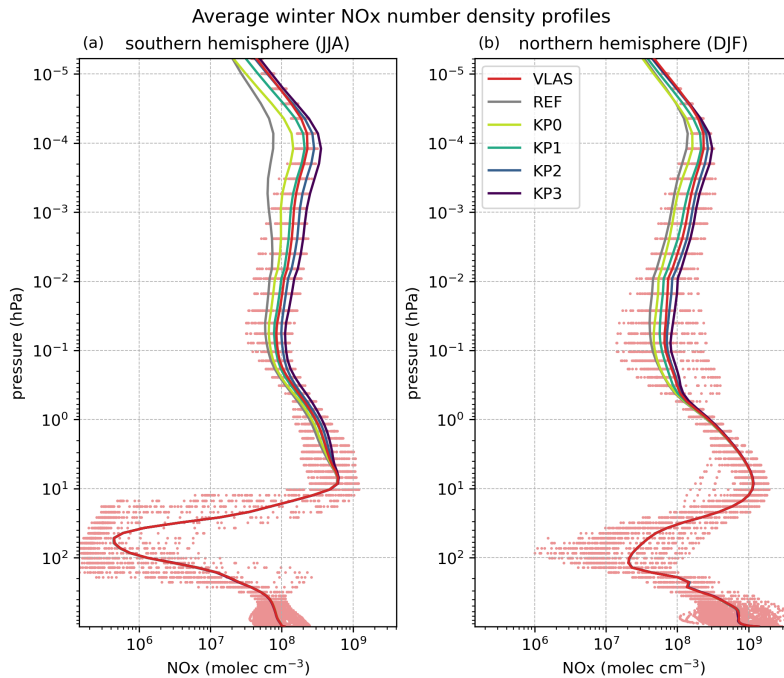


Figure 8. (a–f) Altitude-integrated REF Average NO_x number densities and profiles (g–l solid lines) during wintertime for the relative impact of the VLAS simulation compared to REF, for (a–e) VLAS, (g–i) and KP0–KP3 simulations in the (a) SH (Jun–Aug 2005) and (d–f, j–l) NH (Dec 2005–Feb 2006) polar regions (geographic latitude $> 5060^\circ$). Both The dots represent daily NO_x number densities in the the concentrations and relative differences are averaged over the winter seasons (Jun–Aug 2005 for SH, Dec 2005–Feb 2006 for NH) VLAS simulation. The atmospheric layers — (a, d, g, j) lower thermosphere, (b, e, h, k) mesosphere, and (c, f, i, l) upper stratosphere — correspond to Fig. 7.

In the VLAS run, NO_x is clearly increased throughout the thermosphere and mesosphere, and not just in the auroral oval latitudes, as NO_x is transported from the production region. In the upper stratosphere, the impact is confined inside the polar vortex latitudes with little impact outside it. The SH lower thermosphere does show the effect of the electron precipitation within both inside and outside the auroral oval, with the strongest NO_x responses reaching over 200%, corresponding to Fig. 7a. The NH thermospheric NO_x response is much weaker than the SH, and the auroral oval pattern can only be distinguished on the North American longitude sector. The weaker response and its longitude-longitudinal distribution can overall be explained by the higher REF levels of REF NO_x levels being higher in the NH and than the SH, and by the location of the NH thermospheric NO_x peak over the Eurasian longitude sector, respectively.

In the mesosphere, the relative auroral precipitation impact is stronger in the NH than the SH, again explained by the difference in the REF background levels. This corresponds well to the mesospheric VLAS impacts in Fig. 7c–d. Stratospheric impacts show again the differences in the REF NO_x number densities between the hemispheres. The SH shows clearly the impact centred around the pole, since the NO_x produced by the auroral precipitation descends within the polar vortex from

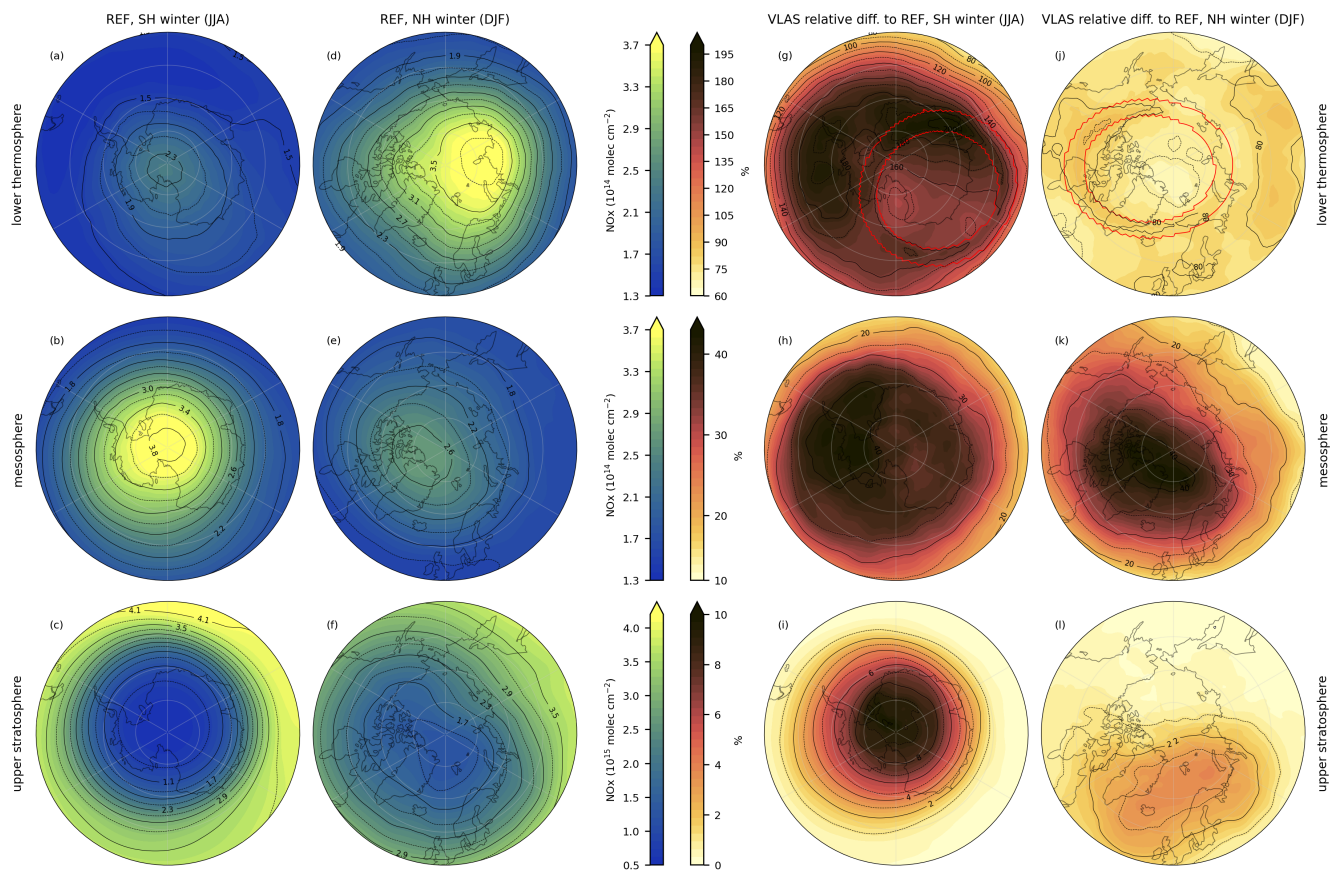


Figure 9. (a–f) Altitude integrated REF NO_x number densities and (g–l) the relative NO_x impact of the VLAS simulation compared to REF, for (a–c, g–i) SH and (d–f, j–l) NH polar regions (geographic latitude >50°). Both the concentrations and relative differences are averaged over the winter seasons (Jun–Aug 2005 for SH, Dec 2005–Feb 2006 for NH). The red lines show the auroral oval by indicating the region where the VLAS integrated daily average auroral ionisation exceeds 0.5×10^{10} ions cm⁻² s⁻¹ on (g) 1 Jul 2005 and (j) 1 Jan 2006, as in Fig. 4. The atmospheric layers – (a, d, g, j) lower thermosphere, (b, e, h, k) mesosphere, and (c, f, i, l) upper stratosphere – correspond to Fig. 7.

430 thermospheric altitudes to the startosphere. In the NH the VLAS auroral electron impact in the stratosphere has a more irregular form, and it is located off-pole, showing the less stable NH polar vortex.

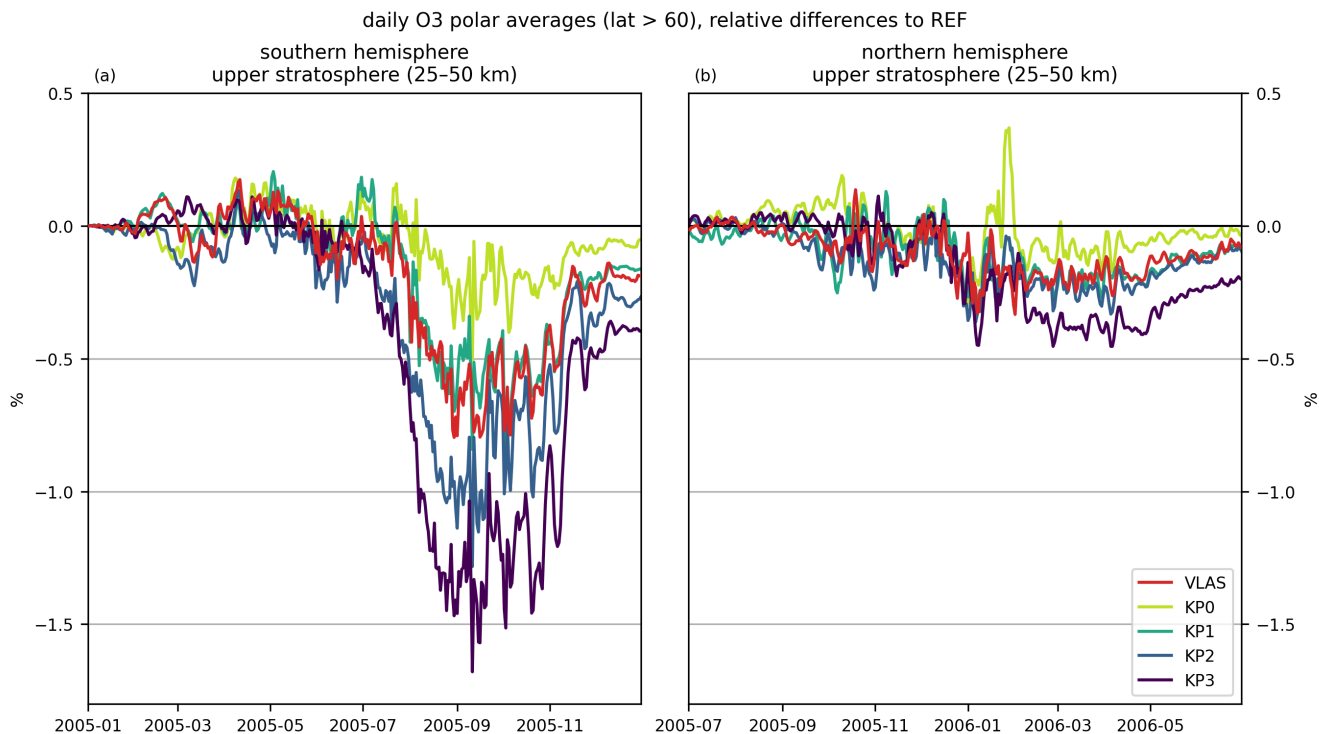


Figure 10. Upper stratospheric ozone response to auroral electron forcing: daily relative difference in vertically integrated ozone number densities from the auroral precipitation simulation runs (colours) compared to the REF run with no auroral precipitation. Polar ~~cap~~ averages (geographic latitude $> 60^\circ$) for (a) SH and (b) NH winters.

The upper stratospheric ozone responses to the auroral electron forcing scenarios are shown in Fig. 10. The O_3 impact is much weaker than NO_x , ~~and comparing the KP5 with a peak decrease of 0.80% (from 1.829×10^{18} molecules cm^{-2} to 1.814×10^{18} molecules cm^{-2}) in SH upper stratospheric O_3 in the VLAS simulation. Comparing the KP3 SH results from~~
 435 ~~Fig. 7, and Fig. Figs. 7 and 10, we see that a NO_x increase of over 600-380% in the lower thermosphere leads to an increase of around 35-18% NO_x in the upper stratosphere, corresponding to a reduction in upper stratospheric O_3 by only 2.5%.~~
~~Similarly for the VLAS run, we see an increase of up to 200% in the lower thermosphere, which results in a decrease of around 0.7% in upper stratospheric ozone~~
 440 ~~1.68% (from 2.048×10^{18} molecules cm^{-2} to 2.014×10^{18} molecules cm^{-2}). As with NO_x , the ozone impact is stronger in the SH, and the NH than in the NH, where the upper stratospheric impact is less than 0.8-0.5% even in the KP5-KP3 case when compared to no auroral electron forcing the reference run.~~

4 Discussion

Our results demonstrate a successful one-way interfacing of magnetospheric and atmospheric simulations. We are able to produce realistic auroral electron precipitation fluxes from eVlasiator, and they have been applied as auroral electron forcing in the WACCM model. The simulated electron fluxes produce atmospheric impacts comparable to WACCM's current auroral electron ~~parameterization~~parameterisation, but with enhanced information on energy and spatial distribution. Thus this work presents the potential for future studies on the ~~interaction-between-effects-of~~ the solar wind ~~and-on~~ the atmosphere, e.g. ~~for~~ for the study of the atmospheric impacts of magnetospheric substorms. Eventually, atmospheric forcing could be driven directly by solar wind parameters instead of proxy-based ~~parameterizations~~parameterisations built on limited magnetospheric electron flux data. ~~In the future, this would also make way for~~ Since solar wind parameters can be observed earlier than e.g. the geomagnetic activity determining the Kp index, this could lead to improved, near-real-time predictions of the atmospheric response in the future. First steps towards this include the production of time-dependent auroral electron precipitation forcing from the magnetospheric simulations, on an extended temporal scale more useful to long-term atmospheric simulations.

Our results ~~also indicate that the current parameterization of aurora may show a clear difference in the structure of the auroral electron forcing between the Kp parameterisation and eVlasiator.~~ While eVlasiator produces a high nighttime peak in ionisation coupled with a much weaker daytime peak, the Kp parameterisation applies ionisation forcing throughout the day, with much less diurnal variability. This leads to a difference in the daily average ionisation rates as well. Comparing the VLAS, KP2, and KP3 cases, the parametrisation produces on average higher ionisation than the scaled eVlasiator auroral electron fluxes, but the eVlasiator nighttime peak integrated ionisation is greater than the KP3 peak by a factor of approximately 2.5. This is despite scaling the eVlasiator electron fluxes with the DMSP observations during Kp index values of 2–3. On average the Kp parameterisation may therefore be overestimating the auroral ~~forcing, at least at low Kp index values.~~ electron forcing, but the lack of a strong nighttime peak seems to at least partially mitigate the overestimation. Further studies are needed to ascertain the correct level of auroral electron forcing, including eVlasiator simulations of the auroral electron fluxes ~~during periods of with conditions corresponding to~~ higher Kp indices. Satellite observations of NO_x species could be used to study the accurate levels of NO_x production that should result from auroral electrons. In addition, electrons at energies beyond the auroral range ($>5030\text{keV}$) should also be considered, e.g. through the inclusion of reconnection and radiation belt processes in future versions of Vlasiator. This could aid in bridging the possible gap between auroral and medium-energy electrons.

Limitations of the magnetospheric models should also be considered. As pointed out in Sect. 2.3.1, eVlasiator does not model all sources of precipitating auroral electrons, ~~an therefore underestimated the total precipitating fluxes and therefore the obtained precipitating fluxes might differ from reality.~~ We have mitigated the effect of this ~~underestimation-possible~~ discrepancy in this study by using the DMSP observations to ~~calibrate-scale~~ the electron fluxes~~-, although the scaling can only increase eVlasiator fluxes at energies for which the values are non-zero.~~ For this reason, the high-energy cutoff associated with the sparse description of phase-space density in eVlasiator remains even after the scaling, which translates to a limit altitude below which the eVlasiator fluxes cannot produce ionisation in the atmosphere. Since we have included the CMIP6 recommended medium-energy electron forcing (energies $>30\text{keV}$) in our atmospheric simulations, we excluded the eVlasiator

475 forcing at corresponding energies. Future work should consider the combination of the different electron precipitation sources with possibly overlapping energy spectrums in detail.

The latitudinal extent of the eVlasiator-derived auroral precipitation is also limited compared to the *Kp* ~~parameterization,~~ ~~arising parameterisation.~~ On the equatorward edge of the auroral oval this arises from the distance of the eVlasiator run's inner boundary from the surface of the Earth. On the poleward side the difference is partially explained by the inclusion of polar rain ~~in the *Kp* parameterisation.~~ We have not considered ~~this limitation these differences and limitations~~ in the interpretation of the atmospheric impacts of the precipitation. Auroral ~~ionization-ionisation~~ rates for future eVlasiator simulations with a less sharp cutoff on the equatorward side of the auroral oval will therefore likely provide an enhancement in the NO_x response, and, as seen in Fig. 9, the NO_x impact is not limited to the auroral oval region.

5 Conclusions

485 In this study we have demonstrated for the first time a novel approach to investigating the role of auroral electron precipitation in the MLTI. We used eVlasiator to simulate electron precipitation fluxes at auroral energies (50 eV–50 keV) that were scaled using satellite observations to account for deficiencies in the magnetospheric model. ~~Ionization-Ionisation~~ rates derived from the electron fluxes were then used as input in WACCM-D in order to ~~analyze-analyse~~ the atmospheric NO_x and ozone impacts of the auroral electron precipitation. We found the strongest response in the SH polar lower thermosphere, where the ~~eVlasiator-derived auroral precipitation increased NO_x concentrations up to 200%-215% (from 1.62×10^{14} molecules cm⁻² to 5.13×10^{14} molecules cm⁻²).~~ In the mesosphere there was an increase of ~~more than 50%-59% (from 3.06×10^{14} molecules cm⁻² to 4.87×10^{14} molecules cm⁻²)~~ in NO_x in ~~both hemispheres~~SH, with NH also reaching an increase of 49% (from 2.65×10^{14} molecules cm⁻² to 3.95×10^{14} molecules cm⁻²). The auroral precipitation response can also be seen in the upper stratosphere, where we see a NO_x increase of around ~~7%-7.8% (from 1.61×10^{15} molecules cm⁻² to 1.74×10^{15} molecules cm⁻²)~~, which corresponds to ~~a peak decrease of 0.7%-0.80% (from 1.829×10^{18} molecules cm⁻² to 1.814×10^{18} molecules cm⁻²)~~ in upper stratospheric ozone.

As comparison to the eVlasiator-derived auroral precipitation we used WACCM's ~~parameterization-parameterisation~~ of auroral electron forcing, which is driven by the *Kp* index based on the auroral model by Roble and Ridley (1987). Overall, the electron ~~precipitation-precipitation~~ from eVlasiator is similar to the ~~parameterized-parameterised~~ auroral electron forcing ~~in location and impact, although there are some clear differences-clear differences in the structure of the auroral forcing.~~ While eVlasiator produces a strong nighttime peak in ionisation rates, the parameterisation on average has more ionisation. The latitudinal extent of the eVlasiator auroral electron precipitation is partially limited, and the ~~ionization-average ionisation~~ rates are somewhat weaker than the ~~parameterizationparameterisation~~, even with the satellite observation-based ~~scaling-scaling~~ of the electron fluxes. On the other hand eVlasiator provides more detailed energy and spatial distributions of the auroral electron precipitation, with ~~ionization forcing-reaching a clear nighttime peak, and the ionisation forcing reaches~~ deeper in to atmosphere, down to 80 km compared to around 95 km in the ~~parameterizationparameterisation~~.

As a next step, in order to validate the accuracy of the model results, a specific simulation could be ~~made~~-carried out for comparisons with satellite observations. For this, time-dependent auroral electron precipitation data from eVlasiator would be needed in order to model the variability of auroral electron impact in the atmosphere. For example, ~~we should study impacts~~
510 impacts should be studied during the different phases of substorms. For the future, this work ~~makes~~-paves the way for a more complete description of auroral electron forcing in atmospheric simulations and, eventually, for the detailed study of solar wind – atmosphere interaction.

Code and data availability. The Vlasiator code is open-source under GPL-2, indexed through Zenodo (Pfau-Kempf et al., 2024), and available through GitHub. The eVlasiator release used for this study is similarly available at Pfau-Kempf et al. (2022). The Vlasiator simulation
515 data used for this study consists of several terabytes of data, and is thus not made available online, but the authors accept data requests. The reduced output of the eVlasiator simulation consisting of precipitating electron differential number flux data is available at Finnish Meteorological Institute Research Data repository METIS (Grandin, 2024).

The DMSP/SSJ precipitating particle fluxes are openly available and were retrieved from <http://cedar.openmadrigal.org/>.

WACCM-D simulation data analysed in this paper are available at Finnish Meteorological Institute Research Data repository METIS
520 (Häkkinä and Szélag, 2024a, b, c). The new WACCM IPR code enabling MLT-dependent ionisation input is indexed via Zenodo (Häkkinä, 2024), and publicly available on GitHub at https://github.com/hakkila/waccm_iprmlt.

Appendix A: Detailed description of the mapping between the ionosphere grid and the eVlasiator simulation domain

To produce an auroral-electron forcing dataset for WACCM-D, we need to map the fluxes obtained with eVlasiator to ionospheric altitudes. The procedure detailed below is illustrated in Fig. A1.

525 Magnetic field lines (in magenta) are ~~traced~~-followed between the ionosphere (at an altitude of 110 km; points A_i) and the inner boundary of the simulation domain from ~~seed~~-start points placed every 1° in MLAT and 0.5 h in MLT. Since the magnetic field inside the inner boundary only consists of the Earth dipole and has no perturbed field term, we construct a more realistic mapping by superposing two magnetic field components. The internal contributions to the geomagnetic field are described by a simple point dipole to match the geomagnetic field description used in Vlasiator. The Tsyganenko 2001
530 (T01; Tsyganenko, 2002a, b) model is used to describe the external field contributions, with the solar wind conditions of the Vlasiator run (see Sect. 2.1), at a date when the geomagnetic dipole was almost perpendicular to the ecliptic plane (11 March 2020, 21:40 UT), and assuming a Dst value of -30 nT. The Python versions of T01 and Earth dipole field implemented in the geopack library (Tian, 2023) were used for this mapping of atmospheric altitudes to $4.8 R_E$, i.e. just beyond the inner boundary (points B_i). From each grid point, we follow the geomagnetic field ~~line~~-obtained by combining the untilted dipole model for
535 internal contributions with the T01 model for external contributions. Up to this step, the procedure is the same as described in more detail in Grandin et al. (2023).

Within the 1.4 s of the eVlasiator run, electrons scattered into the bounce loss cone in the plasma sheet do not have time to reach the inner boundary of the simulation domain. To account for this, we extend the mapping of the MLT–MLAT grid further

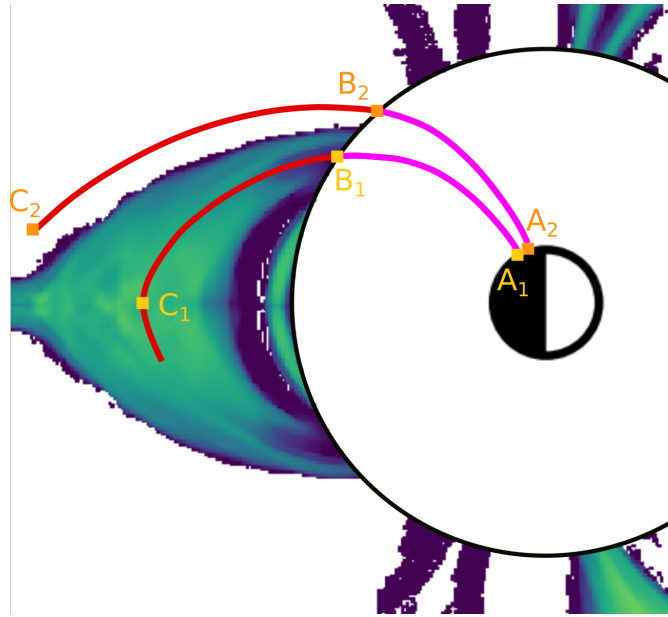


Figure A1. Illustration of the mapping of eVlasiator precipitating electron fluxes to ionospheric altitudes. The view is a slice of the eVlasiator domain in the noon–midnight meridional plane, with the Sun located to the right of the figure. Points A_1 and A_2 are located on the ionospheric grid (Cartesian in MLAT–MLT) at 110 km altitude. Points B_1 and B_2 are located next to the eVlasiator domain’s inner boundary at $4.8 R_E$. The magenta lines indicate the superposition of a non-tilted dipole field with the T01 model. The red lines follow the magnetic field within the eVlasiator domain. Point C_1 is located in the equatorial plane, and point C_2 is located at a distance of $7.5 R_E$ from point B_2 along the magnetic field line.

into the eVlasiator simulation domain so as to reach the magnetospheric regions where precipitating electrons originate. To
 540 ~~ensure better self-consistency~~be consistent, we use the magnetic field ~~lines from the Vlasiator file~~from Vlasiator (in red) to
 extend the mapping outwards for another $7.5 R_E$, or until reaching the equatorial plane. The value of $7.5 R_E$ was empirically
 determined; it ensures that this distance is sufficient to reach the transition region for all the closed field lines on the nightside
 without extending unnecessarily far down the magnetotail or in the cusp for the open field lines.

Finally, along each field line thus obtained and for each electron energy bin, the maximum value of the precipitation differ-
 545 ential flux between the inner boundary (points B_1, B_2) and either the ~~other end of the traced field line~~point where the magnetic
 field tracing was stopped (point C_2) or the equatorial plane (point C_1) is retained. This ~~therefore~~ ensures that precipitating elec-
 trons which may not have had time to reach the inner boundary by the end of the electron simulation are taken into account,
 and gives a conservative high value for the differential number flux.

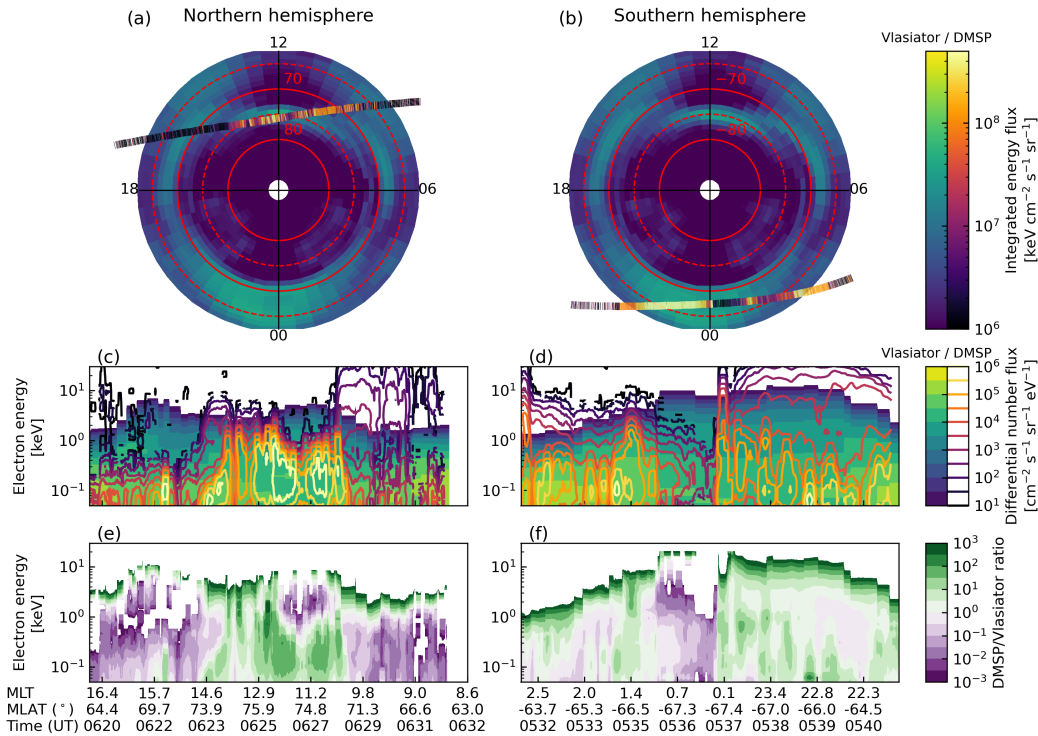


Figure B2. Comparison of eVlasiator and DMSP/SSJ observations during the 10 Oct 2015 overpasses. Same format as in Fig. B1.

560 [applying the sparsity threshold creates a sharp drop at those edges, which translates into a cutoff at high energies in the precipitating flux.](#)

The bottom panels show the ratio between the differential number fluxes measured by DMSP/SSJ and obtained with eVlasiator are displayed, along the satellites' orbits. Green regions correspond to eVlasiator underestimating the electron precipitation, whereas purple regions correspond to eVlasiator overestimating it, when considering a given event and location along the orbit. The ratios typically range between 0.001 and 1000, highlighting the need for a [calibration-scaling](#) of the eVlasiator fluxes so that they might be more realistic. It is clear from those bottom panels that the correction to be applied to eVlasiator fluxes must be different on the dayside and on the nightside, and that it must be energy-dependent. Below we detail how the corrected eVlasiator fluxes were determined and we justify the choices made in developing the method.

B2 Selection of regions of interest to be corrected

In order to avoid increasing the precipitating electron fluxes outside of the auroral oval (e.g. in the polar cap or in the flanks, where eVlasiator fluxes might be contaminated by boundary effects), we restrict the correction to the cusp and nightside oval regions, as indicated with magenta contours in Fig. B3a-b. [The same regions of interest are used for both events.](#) Besides, extremely low eVlasiator flux values ($< 0.01 \text{ el cm}^{-2} \text{ s}^{-1} \text{ sr}^{-1} \text{ eV}^{-1}$) are masked too.

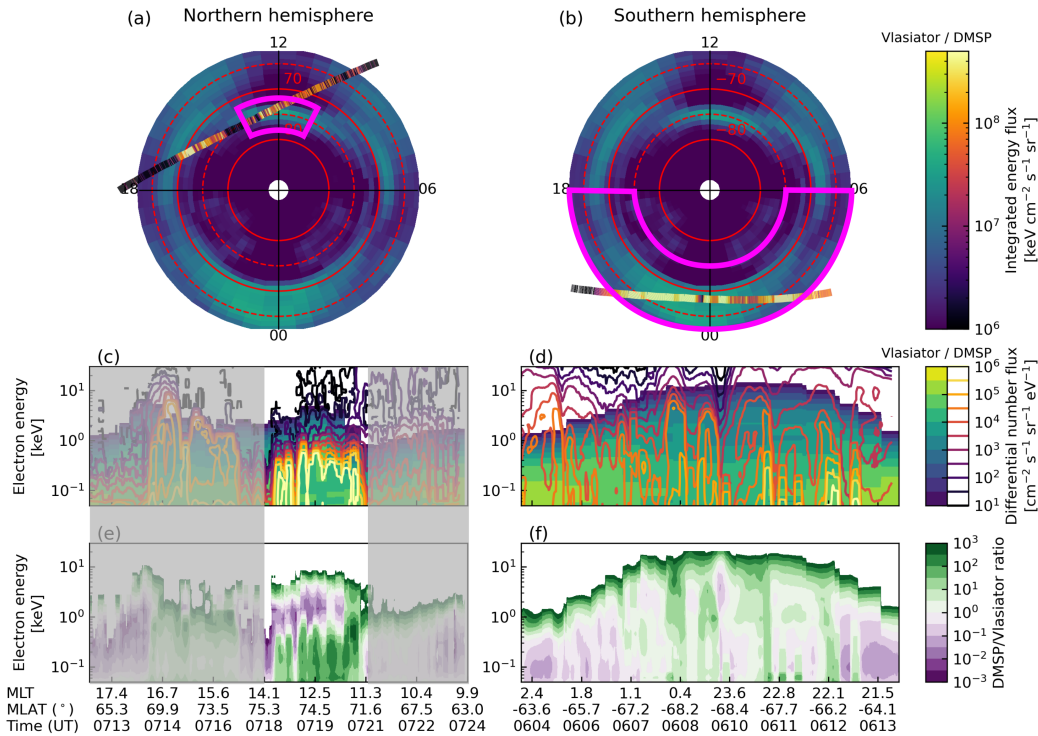


Figure B3. Same as Fig. B1 with regions of interest (cusp and nightside oval) indicated in magenta in panels a–b. The grey shading in panels c and e indicates the masking used for the dayside overpass, to keep only cusp measurements.

~~Since the dayside overpasses include measurements outside the hence delimited cusp, we discard observations made outside of the cusp for the calibration procedure.~~ The masked data are shown in grey in Fig. B3c,e.

575 B3 Quantile-Percentile fitting for DMSP/eVlasiator flux ratios

Since we want to obtain correction coefficients for the eVlasiator fluxes as a function of electron energy, we need to find a suitable ~~metric~~ metric to derive such coefficients based on the ratios between DMSP and eVlasiator fluxes along the DMSP orbits. A quick inspection of Fig. B3e-f reveals that using the mean value (along the DMSP orbits) of the ratio at a given energy would not provide a robust estimate of the needed correction, since for instance at 1 ~~keV~~ keV on the nightside values range from 10^3 (start of the orbit) to $< 1 \text{ e} \text{ cm}^{-2} \text{ s}^{-1} \text{ sr}^{-1} \text{ eV}^{-1} < 1$ (middle of the orbit), which would result in a mean value skewed to the high values and not necessarily representative of the needed correction coefficient at 1 keV. This is because the eVlasiator fluxes drop off quickly at the high-energy end of their spectra, due to the sparse velocity space description (Palmroth et al., 2018). Therefore, instead of using the mean, we use a quantile-percentile value as the ~~metric~~ metric to determine the energy-dependent correction coefficients (one set for cusp fluxes, one set for nightside fluxes).

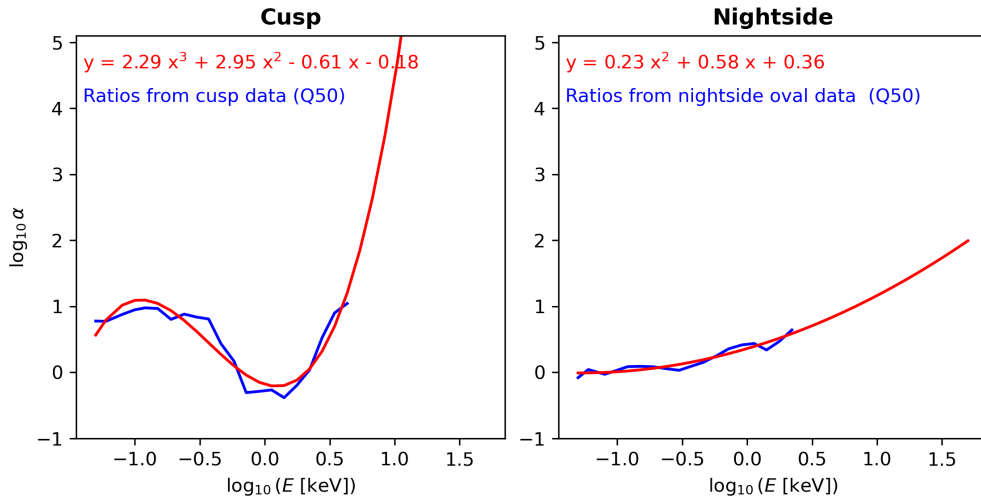


Figure B4. Energy-dependent correction coefficients obtained for the cusp (left) and nightside (right) eVlasiator fluxes obtained by taking the median (Q50) values of the DMSP/eVlasiator flux ratios. The red lines indicate polynomial fits of the data-based curves in blue.

585 Figure B4 shows results obtained when considering median (50th quantilepercentile) values. We see that the median values of the ratios (blue lines) can be fitted with a third-order polynomial for the cusp and with a second-order polynomial for the nightside (red curves), when considering energies and ratios in logarithmic scale. We can then correct the eVlasiator fluxes by multiplying them with these the linear-scale equivalents of those analytical (polynomial) energy-dependent expressions, in the entire regions of interest (cusp and nightside oval). In other words, using the notations introduced in Section 2.3.2, we

590 calculated the corrected eVlasiator differential number flux $\mathcal{F}_e^{\text{VLAS,corrQ50}}(E)$ as:

$$\mathcal{F}_e^{\text{VLAS,corrQ50}}(E) = \alpha_{\text{day|night}}(E) \mathcal{F}_e^{\text{VLAS}}(E) = 10^{\sum_i a_i (\log_{10} E)^i} \mathcal{F}_e^{\text{VLAS}}(E), \quad (\text{B1})$$

with $\mathcal{F}_e^{\text{VLAS}}(E)$ the original eVlasiator differential number fluxes, E the electron energy, and a_i the coefficients of the fitted polynomials.

B4 Adjustment based on the integrated energy fluxes

595 The median-based corrections presented above lead to an enhancement of the eVlasiator fluxes in a way which gives priority to increasing the energies needing it the most to better resemble observations. However, this increase is still insufficient to be representative of the energy input into the upper atmosphere associated with auroral electron precipitation as obtained in the DMSP observations. Indeed, if we consider the ratio of the corrected eVlasiator and DMSP calculate the integrated energy fluxes along the satellite orbits for the corrected eVlasiator data, $\int \mathcal{F}_e^{\text{VLAS}}(E) dE$, and compare them with the integrated energy

600 fluxes measured by DMSP, $\int \mathcal{F}_e^{\text{DMSP}}(E) dE$, we find that ~~its~~ the former are still significantly lower than the latter. Taking the 90th quantile values are percentile of the $\int \mathcal{F}_e^{\text{VLAS}}(E) dE / \int \mathcal{F}_e^{\text{DMSP}}(E) dE$ ratio along the DMSP orbits, we obtain values

of 0.18 in the cusp and 0.24 in the nightside oval, which means that the corrected eVlasiator fluxes are still 4–5 times lower than in observations using this ~~metrics~~-metric. Using the 90th percentile to compare integrated energy fluxes was chosen to monitor for possible local overcorrection: we want to ensure that corrected eVlasiator fluxes are mostly on the order of or less than the DMSP fluxes, in terms of integrated energy flux. As we see here, performing the correction of the differential number fluxes based on median values yields significantly smaller integrated energy fluxes when compared to observations, meaning that the correction can be made stronger.

Therefore, we have adopted the following strategy to obtain corrected eVlasiator fluxes providing a good match with DMSP/SSJ measurements in terms of integrated energy flux: instead of taking median values of the DMSP/eVlasiator ratios to determine the analytical expression of the energy-dependent correction coefficients, we find the optimal ~~quantiles~~-percentiles of these ratios such that the integrated energy fluxes match as closely as possible between corrected eVlasiator fluxes and observations.

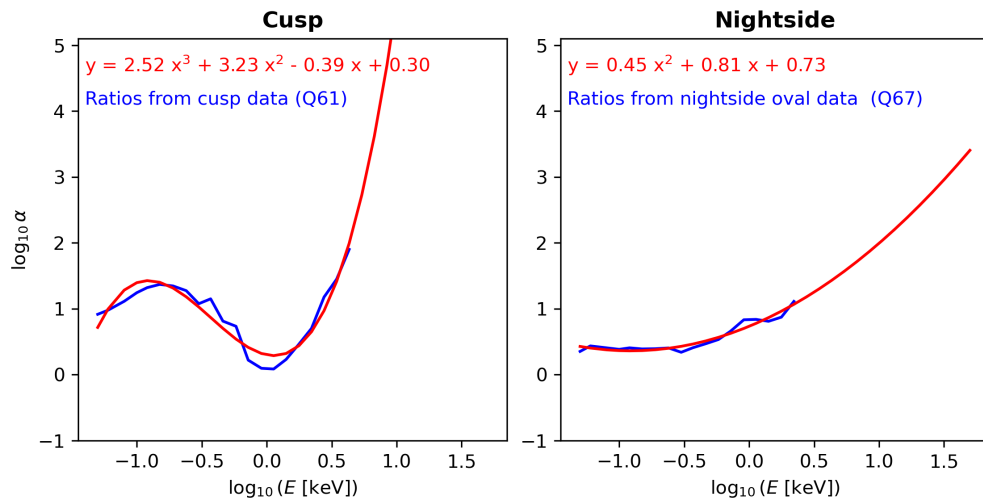


Figure B5. Same as Fig. B4 but using the 61st ~~quantile~~-percentile of the DMSP/eVlasiator flux ratios for the cusp and the 67th ~~quantile~~-percentile for the nightside fluxes.

We found that selecting the 61st (cusp) and 67th (nightside) ~~quantiles~~-percentiles of the DMSP/eVlasiator differential flux ratios along the orbits give the best results, with corrected eVlasiator precipitation being on par with DMSP/SSJ observations in terms of integrated energy fluxes (90th percentile of the ratios of 0.99 and 1.03 for the cusp and nightside, respectively). The corresponding correction coefficients are given in Fig. B5.

Those coefficients were therefore retained for the eVlasiator flux correction, and produced the corrected fluxes shown in Fig. 3. Note that no extrapolation of the corrected fluxes at high energies (where the original eVlasiator fluxes are zero) is performed, meaning that the correction is only applied in the energy domain where the polynomial is fitted.

620 *Author contributions.* MB and MA developed the eVlasiator approach, with LK extending it to support 3D spatial meshes. MA ran the eVlasiator simulation presented in this work. MG developed the particle precipitation approach of Vlasiator, applied it to the eVlasiator data, conceptualised and implemented the ionospheric mapping and scaling approaches presented in the appendices and used in this study, and wrote the corresponding sections of the manuscript. MP is the Vlasiator PI, and she participated in conceptualisation of the study, and supervised the Vlasiator portion of the study. TH, MES, NK, and PTV participated in planning the WACCM-D simulations. TH carried out
625 the WACCM-D simulations with support from MES. PTV produced the ionisation rates used in WACCM-D from the eVlasiator electron fluxes. TH analysed the WACCM-D data and led the writing of the paper, with all co-authors participating in discussions and providing feedback on the manuscript.

Competing interests. At least one of the (co-)authors is a member of the editorial board of *Annales Geophysicae*.

Acknowledgements. We gratefully acknowledge the DMSP/SSJ community and data stewards and services for providing observations of
630 precipitating particle fluxes. The work of MG is funded by the Research Council of Finland (grant 338629-AERGELC'H). We acknowledge the Research Council of Finland grant 335554-ICT-SUNVAC, ~~and~~ Finnish Centre of Excellence in Research of Sustainable Space (grant number 352846), [and Flagship of Advanced Mathematics for Sensing Imaging and Modelling \(grant number 359196\)](#).

Vlasiator development acknowledges European Research Council starting grant 200141-QuESpace and Consolidator grant 682068-PRESTISSIMO. The CSC-IT Center for Science in Finland and the PRACE Tier-0 supercomputer infrastructure in HLRS Stuttgart (grant
635 nos. PRACE-2012061111 and PRACE-2014112573) are acknowledged as they made these results possible. The Vlasiator team wishes to thank the Finnish Grid and Cloud Infrastructure (FGCI) and specifically the University of Helsinki computing services for supporting this project with computational and data storage resources.

The scientific colour maps *batlow*, [imola](#), and *lajolla* (Crameri, 2023) are used in this study to prevent visual distortion of the data and exclusion of readers with colour-vision deficiencies (Crameri et al., 2020).

640 PTV, MG, and NK would like to thank the CHAMOS team for useful discussions (<https://chamos.fmi.fi>).

References

- Alho, M., Battarbee, M., Pfau-Kempf, Y., Khotyaintsev, Y. V., Nakamura, R., Cozzani, G., Ganse, U., Turc, L., Johlander, A., Horaites, K., Tarvus, V., Zhou, H., Grandin, M., Dubart, M., Papadakis, K., Suni, J., George, H., Bussov, M., and Palmroth, M.: Electron Signatures of Reconnection in a Global eVlasiator Simulation, *Geophysical Research Letters*, 49, e98329, <https://doi.org/10.1029/2022GL098329>, 2022.
- 645 Andersson, M. E., Verronen, P. T., Marsh, D. R., Päivärinta, S.-M., and Plane, J. M. C.: WACCM-D – Improved modeling of nitric acid and active chlorine during energetic particle precipitation, *J. Geophys. Res. (Atmos.)*, 121, 10,328–10,341, <https://doi.org/10.1002/2015JD024173>, 2016.
- Barth, C. A., Baker, D. N., and Mankoff, K. D.: The northern auroral region as observed in nitric oxide, *Geophys. Res. Lett.*, 28, 1463–1466, 2001.
- 650 Battarbee, M., Brito, T., Alho, M., Pfau-Kempf, Y., Grandin, M., Ganse, U., Papadakis, K., Johlander, A., Turc, L., Dubart, M., and Palmroth, M.: Vlasov simulation of electrons in the context of hybrid global models: an eVlasiator approach, *Annales Geophysicae*, 39, 85–103, <https://doi.org/10.5194/angeo-39-85-2021>, 2021.
- Butler, A. H., Seidel, D. J., Hardiman, S. C., Butchart, N., Birner, T., and Match, A.: Defining sudden stratospheric warmings, *Bulletin of the American Meteorological Society*, 96, 1913–1928, 2015.
- 655 Cramer, F.: Scientific colour maps, <https://doi.org/10.5281/zenodo.8409685>, 2023.
- Cramer, F., Shephard, G. E., and Heron, P. J.: The misuse of colour in science communication, *Nature Communications*, 11, 5444, <https://doi.org/10.1038/s41467-020-19160-7>, 2020.
- Damiani, A., Funke, B., Santee, M. L., Cordero, R. R., and Watanabe, S.: Energetic particle precipitation: A major driver of the ozone budget in the Antarctic upper stratosphere, *Geophys. Res. Lett.*, 43, 3554–3562, <https://doi.org/10.1002/2016GL068279>, 2016.
- 660 Dubart, M., Ganse, U., Osmane, A., Johlander, A., Battarbee, M., Grandin, M., Pfau-Kempf, Y., Turc, L., and Palmroth, M.: Resolution dependence of magnetosheath waves in global hybrid-Vlasov simulations, *Annales Geophysicae*, 38, 1283–1298, <https://doi.org/10.5194/angeo-38-1283-2020>, 2020.
- Fang, X., Randall, C. E., Lummerzheim, D., Wang, W., Lu, G., Solomon, S. C., and Frahm, R. A.: Parameterization of monoenergetic electron impact ionization, *Geophys. Res. Lett.*, 37, L22 106, <https://doi.org/10.1029/2010GL045406>, 2010.
- 665 Funke, B., López-Puertas, M., Stiller, G. P., and von Clarmann, T.: Mesospheric and stratospheric NO_y produced by energetic particle precipitation during 2002–2012, *J. Geophys. Res.*, 119, 4429–4446, <https://doi.org/10.1002/2013JD021404>, 2014.
- Ganse, U., Koskela, T., Battarbee, M., Pfau-Kempf, Y., Papadakis, K., Alho, M., Bussov, M., Cozzani, G., Dubart, M., George, H., Gordeev, E., Grandin, M., Horaites, K., Suni, J., Tarvus, V., Kebede, F. T., Turc, L., Zhou, H., and Palmroth, M.: Enabling technology for global 3D + 3V hybrid-Vlasov simulations of near-Earth space, *Physics of Plasmas*, 30, 042 902, <https://doi.org/10.1063/5.0134387>, 2023.
- 670 Gettelman, A., Mills, M. J., Kinnison, D. E. and Garcia, R. R., Smith, A. K., Marsh, D. R., Tilmes, S., Vitt, F., Bardeen, C. G., McInerney, J., Liu, H.-L., Solomon, S. C., Polvani, L. M., Emmons, L. K., Lamarque, J.-F., Richter, J. H., Glanville, A. S., Bacmeister, J. T., Phillips, A. S., Neale, R. B., Simpson, I. R., DuVivier, A. K., Hodzic, A., and Randel, W. J.: The whole atmosphere community climate model version 6 (WACCM6), *J. Geophys. Res. (Atmos.)*, 124, 12 380–12 403, <https://doi.org/10.1029/2019JD030943>, 2019.
- 675 Grandin, M.: eVlasiator 3D run (eEGI-1506) with DMSP correction: Precipitating electron differential number flux data, <https://doi.org/10.57707/FMI-B2SHARE.79A154A9959347D0829B0AB2E145499C>, 2024.

- Grandin, M., Battarbee, M., Osmane, A., Ganse, U., Pfau-Kempf, Y., Turc, L., Brito, T., Koskela, T., Dubart, M., and Palmroth, M.: Hybrid-Vlasov modelling of nightside auroral proton precipitation during southward interplanetary magnetic field conditions, *Annales Geophysicae*, 37, 791–806, <https://doi.org/10.5194/angeo-37-791-2019>, 2019.
- 680 Grandin, M., Turc, L., Battarbee, M., Ganse, U., Johlander, A., Pfau-Kempf, Y., Dubart, M., and Palmroth, M.: Hybrid-Vlasov simulation of auroral proton precipitation in the cusps: Comparison of northward and southward interplanetary magnetic field driving, *Journal of Space Weather and Space Climate*, 10, 51, <https://doi.org/10.1051/swsc/2020053>, 2020.
- Grandin, M., Luttkhuis, T., Battarbee, M., Cozzani, G., Zhou, H., Turc, L., Pfau-Kempf, Y., George, H., Horaites, K., Gordeev, E., Ganse, U., Papadakis, K., Alho, M., Tesema, F., Suni, J., Dubart, M., Tarvus, V., and Palmroth, M.: First 3D hybrid-Vlasov global simulation of auroral proton precipitation and comparison with satellite observations, *Journal of Space Weather and Space Climate*, 13, 20, <https://doi.org/10.1051/swsc/2023017>, 2023.
- 685 Grandin, M., Connor, H. K., Hoilijoki, S., Battarbee, M., Pfau-Kempf, Y., Ganse, U., Papadakis, K., and Palmroth, M.: Hybrid-Vlasov simulation of soft X-ray emissions at the Earth's dayside magnetospheric boundaries, *Earth and Planetary Physics*, 8, 70–88, <https://doi.org/10.26464/epp2023052>, 2024.
- 690 Hardy, D. A., Holeman, E. G., Burke, W. J., Gentile, L. C., and Bounar, K. H.: Probability distributions of electron precipitation at high magnetic latitudes, *Journal of Geophysical Research (Space Physics)*, 113, A06 305, <https://doi.org/10.1029/2007JA012746>, 2008.
- Hendrickx, K., Megner, L., Marsh, D. R., and Smith-Johnsen, C.: Production and transport mechanisms of NO in the polar upper mesosphere and lower thermosphere in observations and models, *Atmos. Chem. Phys.*, 18, 9075–9089, <https://doi.org/10.5194/acp-18-9075-2018>, 2018.
- 695 Horaites, K., Rintamäki, E., Zaitsev, I., Turc, L., Grandin, M., Cozzani, G., Zhou, H., Alho, M., Suni, J., Kebede, F., Gordeev, E., George, H., Battarbee, M., Bussov, M., Dubart, M., Ganse, U., Papadakis, K., Pfau-Kempf, Y., Tarvus, V., and Palmroth, M.: Magnetospheric Response to a Pressure Pulse in a Three-Dimensional Hybrid-Vlasov Simulation, *Journal of Geophysical Research (Space Physics)*, 128, e2023JA031 374, <https://doi.org/10.1029/2023JA031374>, 2023.
- Häkkinä, T.: `hakkila/waccm_iprmlt: IPRMLT`, <https://doi.org/10.5281/zenodo.11397846>, 2024.
- 700 Häkkinä, T. and Szélag, M.: WACCM simulation data (VLAS, REF) for the manuscript "Atmospheric Nitrogen Oxide response to electron forcing from a 6D magnetospheric hybrid-kinetic simulation" by T. Häkkinä et. al., <https://doi.org/10.57707/FMI-B2SHARE.F5ADBF0738724045803A117F8B00F016>, 2024a.
- Häkkinä, T. and Szélag, M.: WACCM simulation data (KP0-KP5) in the Northern hemisphere for the manuscript "Atmospheric Nitrogen Oxide response to electron forcing from a 6D magnetospheric hybrid-kinetic simulation" by T. Häkkinä et. al., <https://doi.org/10.57707/FMI-B2SHARE.684501221FC94E1691108FFE39934031>, 2024b.
- 705 Häkkinä, T. and Szélag, M.: WACCM simulation data (KP0-KP5) in the Southern hemisphere for the manuscript "Atmospheric Nitrogen Oxide response to electron forcing from a 6D magnetospheric hybrid-kinetic simulation" by T. Häkkinä et. al., <https://doi.org/10.57707/FMI-B2SHARE.D1B034EB72924FC2A7BE0BD0FFE1EBE3>, 2024c.
- Kotipalo, L., Battarbee, M., Pfau-Kempf, Y., and Palmroth, M.: Physics-motivated Cell-octree Adaptive Mesh Refinement in the Vlasiator 5.3 Global Hybrid-Vlasov Code, *EGUsphere*, 2024, 1–24, <https://doi.org/10.5194/egusphere-2024-301>, 2024.
- 710 Manney, G. L., Krüger, K., Pawson, S., Minschwaner, K., Schwartz, M. J., Daffer, W. H., Livesey, N. J., Mlynczak, M. G., Remsburg, E. E., Russell, J. M., and Waters, J. W.: The evolution of the stratopause during the 2006 major warming: Satellite data and assimilated meteorological analyses, *J. Geophys. Res.*, 113, D11 115, <https://doi.org/10.1029/2007JD009097>, 2008.

- Marsh, D. R., Solomon, S. C., and Reynolds, A. E.: Empirical model of nitric oxide in the lower thermosphere, *J. Geophys. Res. (Space Phys.)*, 109, A07301, <https://doi.org/10.1029/2003JA010199>, 2004.
- 715 Marsh, D. R., Garcia, R. R., Kinnison, D. E., Boville, B. A., Sassi, F., Solomon, S. C., and Matthes, K.: Modeling the whole atmosphere response to solar cycle changes in radiative and geomagnetic forcing, *J. Geophys. Res. (Atmos.)*, 112, D23306, <https://doi.org/10.1029/2006JD008306>, 2007.
- Marsh, D. R., Mills, M., Kinnison, D., Lamarque, J.-F., Calvo, N., and Polvani, L.: Climate change from 1850 to 2005 simulated in CESM1(WACCM), *J. Climate*, 26, 7372–7391, <https://doi.org/10.1175/JCLI-D-12-00558.1>, 2013.
- 720 Matthes, K., Funke, B., Andersson, M. E., Barnard, L., Beer, J., Charbonneau, P., Clilverd, M. A., Dudok de Wit, T., Haberreiter, M., Hendry, A., Jackman, C. H., Kretschmar, M., Kruschke, T., Kunze, M., Langematz, U., Marsh, D. R., Maycock, A., Misios, S., Rodger, C. J., Scaife, A. A., Seppälä, A., Shangquan, M., Sinnhuber, M., Tourpali, K., Usoskin, I., van de Kamp, M., Verronen, P. T., and Versick, S.: Solar Forcing for CMIP6, *Geosci. Model Dev.*, 10, 2247–2302, <https://doi.org/10.5194/gmd-10-2247-2017>, 2017.
- 725 Meraner, K. and Schmidt, H.: Transport of nitrogen oxides through the winter mesopause in HAMMONIA, *J. Geophys. Res.*, 121, 2556–2570, <https://doi.org/10.1002/2015JD024136>, 2016.
- Mlynczak, M. G., Martin-Torres, F. J., Crowley, G., Kratz, D. P., Funke, B., Lu, G., Lopez-Puertas, M., Russell, J. M., Kozyra, J., Mertens, C., Sharma, R., Gordley, L., Picard, R., Winick, J., and Paxton, L.: Energy transport in the thermosphere during the solar storms of April 2002, *J. Geophys. Res.*, 110, A12S25, <https://doi.org/10.1029/2005JA011141>, 2005.
- 730 Molod, A., Takacs, L., Suarez, M., and Bacmeister, J.: Development of the GEOS-5 atmospheric general circulation model: Evolution from MERRA to MERRA2, *Geosci. Model Dev.*, 8, 1339–1356, <https://doi.org/10.5194/gmd-8-1339-2015>, 2015.
- Nesse Tyssøy, H., Sinnhuber, M., Asikainen, T., Bender, S., Clilverd, M. A., Funke, B., van de Kamp, M., Pettit, J. M., Randall, C. E., Reddmann, T., Rodger, C. J., Rozanov, E., Smith-Johnsen, C., Sukhodolov, T., Verronen, P. T., Wissing, J. M., and Yakovchuk, O.: HEPPA III Intercomparison Experiment on Electron Precipitation Impacts: 1. Estimated Ionization Rates During a Geomagnetic Active Period in April 2010, *Journal of Geophysical Research: Space Physics*, 127, e2021JA029128, <https://doi.org/https://doi.org/10.1029/2021JA029128>, e2021JA029128 2021JA029128, 2022.
- 735 Newell, P. T., Feldstein, Y. I., Galperin, Y. I., and Meng, C.-I.: Morphology of nightside precipitation, *Journal of Geophysical Research: Space Physics*, 101, 10737–10748, <https://doi.org/https://doi.org/10.1029/95JA03516>, 1996.
- Palmroth, M., Janhunen, P., Germany, G., Lummerzheim, D., Liou, K., Baker, D. N., Barth, C., Weatherwax, A. T., and Watermann, J.: Precipitation and total power consumption in the ionosphere: Global MHD simulation results compared with Polar and SNOE observations, *Annales Geophysicae*, 24, 861–872, <https://doi.org/10.5194/angeo-24-861-2006>, 2006.
- 740 Palmroth, M., Hoilijoki, S., Juusola, L., Pulkkinen, T. I., Hietala, H., Pfau-Kempf, Y., Ganse, U., von Alfthan, S., Vainio, R., and Hesse, M.: Tail reconnection in the global magnetospheric context: Vlasiator first results, *Annales Geophysicae*, 35, 1269–1274, <https://doi.org/10.5194/angeo-35-1269-2017>, 2017.
- 745 Palmroth, M., Ganse, U., Pfau-Kempf, Y., Battarbee, M., Turc, L., Brito, T., Grandin, M., Hoilijoki, S., Sandroos, A., and von Alfthan, S.: Vlasov methods in space physics and astrophysics, *Living Reviews in Computational Astrophysics*, 4, 1, <https://doi.org/10.1007/s41115-018-0003-2>, 2018.
- Palmroth, M., Grandin, M., Sarris, T., Doornbos, E., Tourgaidis, S., Aikio, A., Buchert, S., Clilverd, M. A., Dandouras, I., Heelis, R., Hoffmann, A., Ivchenko, N., Kervalishvili, G., Knudsen, D. J., Kotova, A., Liu, H.-L., Malaspina, D. M., March, G., Marchaudon, A., Marghita, O., Matsuo, T., Miloch, W. J., Moretto-Jørgensen, T., Mpaloukidis, D., Olsen, N., Papadakis, K., Pfaff, R., Pirnaris, P., Siemes,
- 750

- C., Stolle, C., Suni, J., van den IJssel, J., Verronen, P. T., Visser, P., and Yamauchi, M.: Lower-thermosphere–ionosphere (LTI) quantities: current status of measuring techniques and models, *Annales Geophysicae*, 39, 189–237, <https://doi.org/10.5194/angeo-39-189-2021>, 2021.
- 755 Palmroth, M., Pulkkinen, T. I., Ganse, U., Pfau-Kempf, Y., Koskela, T., Zaitsev, I., Alho, M., Cozzani, G., Turc, L., Battarbee, M., Dubart, M., George, H., Gordeev, E., Grandin, M., Horaites, K., Osmane, A., Papadakis, K., Suni, J., Tarvus, V., Zhou, H., and Nakamura, R.: Magnetotail plasma eruptions driven by magnetic reconnection and kinetic instabilities, *Nature Geoscience*, 16, 570–576, <https://doi.org/10.1038/s41561-023-01206-2>, 2023.
- Partamies, N., Juusola, L., Tanskanen, E., and Kauristie, K.: Statistical properties of substorms during different storm and solar cycle phases, *Annales Geophysicae*, 31, 349–358, <https://doi.org/10.5194/angeo-31-349-2013>, 2013.
- 760 Pfau-Kempf, Y., von Alfthan, S., Ganse, U., Sandroos, A., Battarbee, M., Koskela, T., Otto, Ilja, Papadakis, K., Kotipalo, L., Zhou, H., Grandin, M., Pokhotelov, D., and Alho, M.: fmihcp/vlasiator: eVlasiator 6D pre-release, <https://doi.org/10.5281/zenodo.6642177>, 2022.
- Pfau-Kempf, Y., von Alfthan, S., Ganse, U., Battarbee, M., Kotipalo, L., Koskela, T., Ilja, Sandroos, A., Papadakis, K., Alho, M., Zhou, H., Palmu, M., Grandin, M., Suni, J., Pokhotelov, D., and kostahoraites: fmihcp/vlasiator: Vlasiator 5.3, <https://doi.org/10.5281/zenodo.10600112>, 2024.
- 765 Picone, J. M., Hedin, A. E., Drob, D. P., and Aikin, A. C.: NRLMSISE-00 empirical model of the atmosphere: Statistical comparisons and scientific issues, *J. Geophys. Res.*, 107, 1468, <https://doi.org/10.1029/2002JA009430>, 2002.
- Randall, C. E., Harvey, V. L., Siskind, D. E., France, J., Bernath, P. F., Boone, C. D., and Walker, K. A.: NO_x descent in the Arctic middle atmosphere in early 2009, *Geophys. Res. Lett.*, 36, L18 811, <https://doi.org/10.1029/2009GL039706>, 2009.
- Randall, C. E., Harvey, V. L., Holt, L. A., Marsh, D. R., Kinnison, D., Funke, B., and Bernath, P. F.: Simulation of energetic particle precipitation effects during the 2003–2004 Arctic winter, *J. Geophys. Res. (Space Phys.)*, 120, 5035–5048, <https://doi.org/10.1002/2015JA021196>,
770 2015.
- Redmon, R. J., Denig, W. F., Kilcommons, L. M., and Knipp, D. J.: New DMSP database of precipitating auroral electrons and ions, *Journal of Geophysical Research (Space Physics)*, 122, 9056–9067, <https://doi.org/10.1002/2016JA023339>, 2017.
- Roble, P. B. and Ridley, E. C.: An auroral model for the NCAR thermospheric general circulation model (TGCM), *Ann. Geophys.*, 5A(6), 369–382, 1987.
- 775 Sarris, T., Palmroth, M., Aikio, A., Buchert, S. C., Clemmons, J., Clilverd, M., Dandouras, I., Doornbos, E., Goodwin, L. V., Grandin, M., Heelis, R., Ivchenko, N., Moretto-Jørgensen, T., Kervalishvili, G., Knudsen, D., Liu, H.-L., Lu, G., Malaspina, D. M., Marghita, O., Maute, A., Miloch, W. J., Olsen, N., Pfaff, R., Stolle, C., Talaat, E., Thayer, J., Tourgaidis, S., Verronen, P. T., and Yamauchi, M.: Plasma-Neutral Interactions in the Lower Thermosphere-Ionosphere: The need for in situ measurements to address focused questions, *Frontiers in Astronomy and Space Sciences*, 9, 435, <https://doi.org/10.3389/fspas.2022.1063190>, 2023.
- 780 Seppälä, A., Clilverd, M. A., Beharrell, M. J., Rodger, C. J., Verronen, P. T., Andersson, M. E., and Newnham, D. A.: Substorm-induced energetic electron precipitation: Impact on atmospheric chemistry, *Geophys. Res. Lett.*, 42, 8172–8176, <https://doi.org/10.1002/2015GL065523>, 2015.
- Sinnhuber, M., Kazeminejad, S., and Wissing, J. M.: Interannual variation of NO_x from the lower thermosphere to the upper stratosphere in the years 1991–2005, *J. Geophys. Res.*, 116, A02 312, <https://doi.org/10.1029/2010JA015825>, 2011.
- 785 Sinnhuber, M., Tyssøy, H. N., Asikainen, T., Bender, S., Funke, B., Hendrickx, K., Pettit, J., Reddmann, T., Rozanov, E., Schmidt, H., Smith-Johnsen, C., Sukhodolov, T., Szeląg, M. E., van de Kamp, M., Verronen, P. T., Wissing, J. M., and Yakovchuk, O.: Heppa III intercomparison experiment on medium-energy electrons, part II: Model-measurement intercomparison of nitric oxide (NO) during a geomagnetic storm in April 2010, *J. Geophys. Res. (Space Phys.)*, 127, e2021JA029 466, <https://doi.org/10.1029/2021JA029466>, 2021.

- Smith-Johnsen, C., Marsh, D. R., Smith, A. K., Tyssøy, H. N., and Maliniemi, V.: Mesospheric nitric oxide transport in WACCM, *J. Geophys. Res. (Space Phys.)*, 127, e2021JA029998, <https://doi.org/10.1029/2021JA029998>, 2022.
- 790 Szélag, M. E., Marsh, D. R., Verronen, P. T., Seppälä, A., and Kalakoski, N.: Ozone impact from solar energetic particles cools the polar stratosphere, *Nature Commun.*, 13, 6883, <https://doi.org/10.1038/s41467-022-34666-y>, 2022.
- Tian, S.: The geopack and Tsyganenko models in Python [Software], v1.0.10, Available from <https://pypi.org/project/geopack/>, 2023.
- Tsyganenko, N. A.: A model of the near magnetosphere with a dawn-dusk asymmetry 1. Mathematical structure, *Journal of Geophysical Research (Space Physics)*, 107, 1179, <https://doi.org/10.1029/2001JA000219>, 2002a.
- 795 Tsyganenko, N. A.: A model of the near magnetosphere with a dawn-dusk asymmetry 2. Parameterization and fitting to observations, *Journal of Geophysical Research (Space Physics)*, 107, 1176, <https://doi.org/10.1029/2001JA000220>, 2002b.
- Turunen, E., Kero, A., Verronen, P. T., Miyoshi, Y., Oyama, S., and Saito, S.: Mesospheric ozone destruction by high-energy electron precipitation associated with pulsating aurora, *J. Geophys. Res. (Atmos.)*, 121, 11 852–11 861, <https://doi.org/10.1002/2016JD025015>, 800 2016.
- van de Kamp, M., Seppälä, A., Clilverd, M. A., Rodger, C. J., Verronen, P. T., and Whittaker, I. C.: A model providing long-term datasets of energetic electron precipitation during geomagnetic storms, *J. Geophys. Res. (Atmos.)*, 121, 12 520–12 540, <https://doi.org/10.1002/2015JD024212>, 2016.
- Verronen, P. T. and Rodger, C. J.: Atmospheric ionization by energetic particle precipitation, chap. 4.5, pp. 261–266, *Earth's climate response to a changing Sun*, edited by T. Dudok de Wit et al., EDP Sciences (www.edpsciences.org), France, ISBN 978-2-7598-1733-7, 2015.
- 805 Verronen, P. T., Andersson, M. E., Marsh, D. R., Kovács, T., and Plane, J. M. C.: WACCM-D – Whole Atmosphere Community Climate Model with D-region ion chemistry, *J. Adv. Model. Earth Syst.*, 8, 954–975, <https://doi.org/10.1002/2015MS000592>, 2016.
- von Alfthan, S., Pokhotelov, D., Kempf, Y., Hoilijoki, S., Honkonen, I., Sandroos, A., and Palmroth, M.: Vlasiator: First global hybrid-Vlasov simulations of Earth's foreshock and magnetosheath, *Journal of Atmospheric and Solar-Terrestrial Physics*, 120, 24–35, 810 <https://doi.org/https://doi.org/10.1016/j.jastp.2014.08.012>, 2014.
- Wissing, J. M. and Kallenrode, M.-B.: Atmospheric Ionization Module Osnabrück (AIMOS): A 3-D model to determine atmospheric ionization by energetic charged particles from different populations, *J. Geophys. Res.*, 114, A06 104, <https://doi.org/10.1029/2008JA013884>, 2009.