

# Observations of traveling ionospheric disturbances driven by gravity waves from sources in the upper and lower atmosphere

Paul Prikryl<sup>1</sup>, David R. Themens<sup>1,2</sup>, Jaroslav Chum<sup>3</sup>, Shibaji Chakraborty<sup>4</sup>, Robert G. Gillies<sup>5</sup>, James M. Weygand<sup>6</sup>

<sup>1</sup>Physics Department, University of New Brunswick, Fredericton, NB, Canada

<sup>2</sup>School of Engineering, University of Birmingham, Birmingham, UK

<sup>3</sup>Institute of Atmospheric Physics CAS, Prague, Czech Republic

<sup>4</sup>Center for Space Science and Engineering Research, Virginia Tech, Blacksburg, VA, USA

<sup>5</sup>Department of Physics and Astronomy, University of Calgary, Calgary, AB, Canada

<sup>6</sup>Earth, Planetary, and Space Sciences, University of California, Los Angeles, CA, USA

Correspondence to: Paul Prikryl (paul.prikryl@unb.ca)

## Abstract

At high latitudes, the solar wind-magnetosphere-ionosphere-thermosphere coupling modulates the dayside ionospheric convection and currents that generate gravity waves driving equatorward propagating medium- to large-scale traveling ionospheric disturbances (TIDs). At mid latitudes, extratropical cyclones are sources of gravity waves driving medium-scale TIDs. Multi-instrument observations of TIDs, including the Poker Flat Incoherent Scatter Radar (PFISR), the Super Dual Auroral Radar Network (SuperDARN), the multipoint and multifrequency continuous Doppler sounders, and the GNSS total electron content (TEC) mapping technique, are presented. PFISR measured electron density altitude profiles, from which TIDs are obtained by a filtering method to remove background densities. SuperDARN observed dayside pulsed ionospheric flows at high latitudes and ground scatter power modulated by equatorward propagating TIDs that were also observed in the detrended GNSS TEC. At mid latitudes, eastward to southeastward propagating medium-scale TIDs were observed in the detrended TEC maps and by multi-frequency and multi-point continuous HF Doppler sounding system that can determine TID propagation velocities and azimuths. The aim of this study is to attribute the observed TIDs to atmospheric gravity waves generated by auroral sources in the lower thermosphere, or gravity waves generated in the troposphere by mid-latitude weather systems. At high latitudes, the horizontal equivalent ionospheric currents are estimated from the ground-based magnetometer data using an inversion technique. At mid latitudes, the cases of eastward to southeastward propagating TIDs are attributed

to gravity waves that are generated by geostrophic adjustment processes and shear instability in the intensifying low-pressure systems, and are identified in the stratosphere using the ERA5 meteorological reanalysis.

## 1. Introduction

The theory governing the propagation and effects of AGWs in the ionosphere was developed by Hines (1960) and their ionospheric sources have been recognized (Chimonas, 1970; Chimonas and Hines, 1970; Testud, 1970; Richmond, 1978). The relationship between atmospheric gravity waves (AGWs) and traveling ionospheric disturbances (TIDs) has been well established (Hocke and Schlegel, 1996). Global propagation of medium- to large-scale GWs/TIDs has been linked to auroral sources (Hunsucker, 1982; Hajkowicz, 1991; Lewis *et al.*, 1996; Balthazor and J., 1997). The Worldwide Atmospheric Gravity-wave Studies (WAGS) program (Crowley and Williams, 1988; Williams *et al.*, 1993) showed that large-scale TIDs originate in auroral latitudes.

TIDs driven by AGWs that originate ing in the lower atmosphere come from a variety of sources, including tropospheric weather systems (Bertin, Testud and Kersley, 1975; Bertin *et al.*, 1978; Waldock and Jones, 1987; Nishioka *et al.*, 2013; Azeem *et al.*, 2015). Other known causes AGWs/TIDs are solar flares (Zhang *et al.*, 2019), total solar eclipses (Zhang *et al.*, 2017; Mrak *et al.*, 2018), volcanic eruptions, earthquakes, and tsunamis (Yu, Wang and Hickey, 2017; Nishitani *et al.*, 2019; Themens *et al.*, 2022).

Most of the early observations of TIDs were obtained by HF Doppler sounders, HF radars, and incoherent scatter radars (Hunsucker 1982). More recently, the GNSS-derived total electron content (TEC) measurements have become a commonly used technique to observe medium- to large-scale TIDs (e.g., Afraimovich *et al.*, 2000; Cherniak and Zakharenkova, 2018; Cheng *et al.*, 2021; Nykiel *et al.*, 2024). Large-scale TIDs (LSTIDs) have wavelengths greater than 1000 km and propagate at speeds 400-1000 m/s, while medium-scale TIDs (MSTIDs) have wavelengths of several hundred kilometers and tend to propagate at speeds of 250–1000 m/s (Hunsucker, 1982).

van de Kamp *et al.* (2014) described two techniques to detect TIDs, one using the EISCAT incoherent scatter radar near Tromsø, and the other using the detrended GPS TEC data. They

Formatted: Justified, Line spacing: 1.5 lines

determined parameters characterizing TIDs and studied an event of January 20, 2010. While these authors did not investigate the origin of the TIDs they suggested that the AGWs were most likely generated at low atmospheric layers. Using the EISCAT Svalbard radars on February 13, 2001, Cai et al. (2011) observed moderately large-scale TIDs propagating over the dayside polar cap that were generated by the nightside auroral heating. It is noted that both these TID events occurred on days following arrivals of corotating interaction regions (CIRs) at the leading edge of solar wind high-speed streams that triggered moderate geomagnetic storms.

Frissell et al. (2016) concluded that polar atmospheric processes, namely the polar vortex, rather than space weather activity are primarily responsible for controlling the occurrence of high-latitude and midlatitude winter daytime medium-scale TIDs (MSTIDs). This paper has been frequently cited to justify suggestions of polar vortex as a source of the observed MSTIDs, particularly when geomagnetic activity is low. Recent papers (Becker et al., 2022; Bossert et al., 2022; Vadas et al., 2023) discussed methods for assessing vortex generated GWs from model output. Vadas et al. (2023) discussed observations of polar vortex generated GWs and subsequent secondary GW generation in the polar region. Becker et al. (2022) performed simulations focusing on multi-step vertical coupling by primary, secondary, and higher-order gravity waves of wintertime thermospheric gravity waves and compared them with observed perturbations of total electron content. They demonstrated that gravity waves generated from lower altitudes can propagate equatorward. Bossert et al. (2022) discussed a strong TID/TAD event observed during a sudden stratospheric warming (SSW) on January 18-19, 2013, and suggested that the large-scale TIDs/TADs were related to geomagnetic activity despite low  $Kp$  index. Thus, it is important to continue discussing possible sources of GWs in the lower and upper atmosphere.

The solar wind coupling to the dayside magnetosphere (Dungey, 1961, 1995) generates variable electric fields that map to the ionosphere driving the  $E \times B$  ionospheric convection observed by SuperDARN HF radars and ionospheric currents observed by network of ground-based magnetometers. The mechanisms for energy transfer to the thermosphere can be Joule heating, precipitation, or ion drag by Lorentz force (Richmond, 1979; Nishimura et al., 2020; Deng et al., 2019). Nykiel et al. (2024) found that Joule heating is a primary energy source for the night-time LSTIDs triggered in the auroral region, while the daytime LSTIDs can be also driven by

precipitating particles in the polar cusp. On the dayside, pulsed ionospheric flows (PIFs), that are known to be associated with poleward moving auroral forms (precipitation), have been observed to generate AGWs, which in turn modulate ionospheric densities resulting in MSTIDs propagating equatorward observed by SuperDARN radars (Samson *et al.*, 1989; 1990; Prikryl *et al.*, 2005, 2022).

Formatted: Font: Italic

Formatted: Font: Italic

In this study, even in the case when geomagnetic activity is very low, PIFs are found to be the source of AGWs/TIDs observed by PFISR and SuperDARN (Section 3.1). In other cases, the AGWs/TIDs that were generated by solar wind Alfvén waves coupling to the dayside magnetosphere are investigated in Section 3.2. The equatorward propagating TIDs were observed in the detrended vertical  $\nu$ TEC and the radar ground-scatter power focused and defocused by TIDs moving equatorward.

The tropospheric convection is often a source of gravity waves that propagate into the upper atmosphere driving TIDs (e.g., Azeem, 2021; and references therein). In this study, gravity waves generated in the troposphere by geostrophic adjustment processes and shear instability (Uccellini and Koch, 1987) are considered to drive TIDs propagating eastward to southward that were observed in the detrended  $\nu$ TEC maps and by the HF Doppler sounding system (Section 4). To our knowledge, this physical mechanism has not been considered as a source of TIDs. The ERA5 meteorological reanalysis is used to show the gravity waves propagating into the stratosphere.

The aim of this study is to attribute the observed TIDs to sources in the upper (Section 3), and the lower (Section 4) atmosphere. These observations show that AGWs provide both downward and upward vertical coupling of the ionosphere and neutral atmosphere.

## 2. Data sources and methods

Fig. 1 shows a map of instruments used in this study as described below.

### 2.1. Advanced Modular Incoherent Scatter Radar

Data from the Advanced Modular Incoherent Scatter Radar (AMISR) located in Poker Flats, AK (i.e., the Poker Flats Incoherent Scatter Radar - PFISR) was used in this study. AMISR radars use

Formatted: Font: Italic

Formatted: Justified, Line spacing: 1.5 lines

phased-array beam-forming techniques on a pulse-to-pulse timescale to effectively sample various look directions simultaneously (Heinselman and Nicolls (2008)). These radars have been used to investigate gravity wave propagation (Nicolls and Heinselman, 2007; Vadas and Nicolls, 2008). PFISR is located at the Poker Flat Research Range (65.1°N, 147.5°W) near Fairbanks, Alaska. Due to its phased-array system, PFISR (like other AMISR systems) is able to operate in a variety of different ionospheric sampling modes (often these modes can even be run simultaneously by interleaving different pulse sequences). During the time of interest for this study (January 8-9, 2013), PFISR was running a 7-beam mode with interlaced Long Pulse (LP) and Alternating Code (AC) modes. Typically, the LP data is primarily used for sampling the F-region, while the AC mode allows better resolution of E-region densities and parameters. In this study, the LP electron density data from beam 2 of this particular experiment (elevation 52.5° and azimuth -7.8°) are used. The electron densities measured by an ISR such as PFISR are determined from the total signal power returned from a given range gate. The LP mode in this experiment had a range resolution of 25 km, resulting in an altitude resolution of 19.5 km for this beam. To retrieve TIDs, background densities are removed by applying Savitzky-Golay filter (Press and Teukolsky, 1990) that has been used in previous studies (Zhang *et al.*, 2017; 2019). Other types of high-pass filters and detrending methods would produce similar results.

## *2.2. Multi-point and multi-frequency continuous HF Doppler sounding system*

The multi-point and multi-frequency continuous HF Doppler sounding system operating in the Czech Republic is described by Chum *et al.* (2021). It consists of three transmitting sites Tx1, Tx2, and Tx3 distributed in the western part of the Czech Republic (Tx1: 50.528°N, 14.567°E; Tx2: 49.991°N, 14.538°E; Tx3: 50.648°N, 13.656°E) and receiver Rx located in Prague (50.041°N, 14.477°E). Radio waves at different frequencies (3.59, 4.65 and 7.05 MHz) are transmitted from each site. First, the time evolution of power spectral densities — Doppler shift spectrograms are computed for each signal and the maximum of power spectral density (characteristic Doppler shift) is found with selected time resolution suitable for the TIDs/GWs analysis (30 or 60 s). TID/GW cause movement of plasma and therefore the Doppler shift. The propagation velocities and azimuths are then determined from the time delays between the Doppler shifts recorded for different transmitter-receiver pairs and expected distances of the reflection

Formatted: Font: Italic

Formatted: Justified, Line spacing: 1.5 lines

points in the ionosphere are determined by two or three dimensional methods described in detail by Chum and Podolská (2018) and Chum et al. (2021).

The multi-point and multi-frequency continuous HF Doppler sounding system operating in the Czech Republic is used to determine propagation velocities and azimuths of TIDs at the specific heights of the signal reflections. The Doppler system consists of three transmitting sites Tx1, Tx2, and Tx3 that are distributed in the western part of the Czech Republic (Tx1: 50.528°N, 14.567°E; Tx2: 49.991°N, 14.538°E; Tx3: 50.648°N, 13.656°E) and receiver Rx located in Prague (50.041°N, 14.477°E). The system is operating at the frequencies of 3.59, 4.65 and 7.04 MHz. The reflection heights depend on the sounding frequency and change during the day and can be obtained from ionograms measured by a nearby digital ionospheric sounder. The frequencies of transmitters operating at a specific frequency are mutually shifted by about 4 Hz at different transmitting sites. Thus, the signals of individual transmitters can be easily distinguished at the receiving site. Locations of the reflection points are assumed in the middle between the individual transmitter-receiver pairs, if projected to the ground. Horizontal distances between the individual reflection points are about 30–50 km. Thus, the system is suitable for propagation analysis of medium-scale TIDs.

The processing runs as follows. First, the time evolution of power spectral densities - Doppler shift spectrograms are computed for each signal and the maximum of power spectral density (characteristic Doppler shift) is found with selected time resolution suitable for the TIDs/GWs analysis (30 or 60 s). The obtained time series then serve as an input for the propagation analysis of TIDs (Chum et al., 2021). It should be noted that TID/GW cause movement of plasma and therefore the Doppler shift. The propagation velocities and azimuths are then determined from the time delays between the Doppler shifts recorded for different transmitter-receiver pairs and expected distances of the reflection points in the ionosphere. Three different methods are used to compute time delays between the observed signals (obtained from time series of the Doppler shifts): (a) best beam slowness search, (b) unweighted and (c) weighted least square solution of overdetermined set of equations, based on the time delays obtained for maxima of cross-correlation functions between the individual signals. See Chum and Podolská (2018) for a more detailed description and formulas. Mean values of the propagation velocities calculated from the time delays obtained by these three different methods are presented further. At the same time, uncertainties are estimated from the variance of the obtained results by these three methods as

standard deviations. Only velocities that satisfy the following criteria are considered (displayed): the uncertainty of propagation velocity is less than 20% of its absolute value and the uncertainty of azimuth is less than 10°. Analysis for signals Doppler shifts smaller than 0.1 Hz is also not displayed.

A 2-D version of propagation analysis (in the horizontal plane) is applied here to analyse longer time intervals (Chum et al. 2021). It should be noted that usable signals (Doppler shifts) are only obtained if the signals reflect from the F2 layer. The Doppler shift of signal reflecting from the E layer is usually negligible. The sounding frequency has also to be smaller than the critical frequency of the ionosphere to receive the reflected signal.

### 2.3. Super Dual Auroral Radar Network (SuperDARN)

SuperDARN constitutes a globally distributed HF Doppler radar network, operational within the frequency range of 8 to 18 MHz, encompassing both the northern and southern hemispheres across various latitudinal bands, including middle, high, and polar zones. Each radar within this network measures the line-of-sight (LoS) component of the drift velocity associated (Chisham et al., 2007; Nishitani et al., 2019). The observations from SuperDARN encompass two principal forms of backscatter, namely, ground and ionospheric scatters. In the case of ground scatter, due to the high daytime vertical gradient in the refractive index, the rays bend toward the ground and are reflected from surface roughness and return to the radar following the same paths. This simulates a one-hop ground-to-ground communication link that passes through the D-region 4 times. Ionospheric scatter is generated when a transmitted signal is scattered from ionospheric irregularities. Typically, ground and ionospheric scatters are associated with relatively lower & higher Doppler velocities and narrower & wider spectral widths, respectively.

SuperDARN radars are phased-array systems with electronically steerable beams. These radars use a narrow (~3.2°) azimuthal beam and a wide (~25-30°) vertical beam, typically employing an array of 16-20 antennas. A standard 16-20 beam scan provides a field of view approximately 52-62° wide in azimuth, extending from about 180 km to beyond 3000 km in range, with measurements typically taken at 45 km intervals. The radars can operate across a wide range of HF frequencies (8-20 MHz), allowing them to utilize various propagation modes and observe diverse geophysical phenomena. They transmit multi-pulse sequences, and the resulting echoes

Formatted: Font: Italic

are processed to calculate multi-lag autocorrelation functions (ACFs). These ACFs, averaged over 3-6 seconds, are used to determine power, line-of-sight Doppler velocity, and Doppler spectral width. The resulting fitted ACFs, known as Fitacf data, are generated from raw radar data using version 2.5 of the FITACF algorithm (SuperDARN Data Analysis Working Group et al., 2022).

In this study, we use line-of-sight (LoS) Doppler velocities and ground scatter observations, i.e., fitacf2.5 datasets, to characterize TIDs, with supplementary support from ionospheric convection maps available at the SuperDARN Virginia Tech (VT) website ([vt.superdarn.org](http://vt.superdarn.org)) to validate their sources. Prior research has demonstrated the utility of both scatter types in studies of pulsed ionospheric flows (PIFs) (McWilliams, Yeoman and Provan, 2000; Prikryl et al., 2002) and TIDs (Samson et al., 1990). MSTID signatures, embedded within radar backscatter, can be used to assess TID phase and propagation direction (Frissell et al., 2014). Previous studies have relied on fitacf2.5-derived parameters, like power and Doppler shift, for such analyses (e.g., Frissell et al., 2014; Inchin et al., 2024). Fig. 1 displays the locations and fields-of-view of radars and other relevant instruments used in this study.

#### *2.4. Global Navigation Satellite System (GNSS)*

The GNSS data for this were gathered from the same global networks of GNSS receivers used in Themens et al. (2022), which constitute 5200-5800 stations, depending on the period. Examples of the GNSS station distribution in the two local domains can be viewed in Fig. S1 in the Supplement. ~~Using the phase leveling and cycle slip correction method outlined by Themens et al. (2013), the LoS total electron content (TEC) is determined from the differential phase and code measurements of these systems.~~ Using the phase leveling and cycle slip correction method outlined by Themens et al. (2013), whereby phase TEC is leveled to pseudorange TEC using an elevation-weighted mean, the LoS total electron content (TEC) is determined from the differential phase and code measurements of these systems. As detailed in Themens et al. (2015), the satellite biases are acquired from the Center for Orbit Determination in Europe (CODE, [ftp://ftp.aiub.unibe.ch/](http://ftp.aiub.unibe.ch/)) and receiver biases are determined.

Formatted: Font: Italic

To characterize the TID structures using these data, LoS TEC measurements for each satellite-receiver pair were detrended by first projecting the LoS TEC to vertical TEC (vTEC) using the thin shell approximation at 350-km altitude and subtracting the sliding 60-minute average. More details on this method can be found in Themens et al. (2022). The TEC anomalies are then binned in 0.75-degree latitude and longitude bins for mapping.

It should be noted, that the detrending used in this analysis largely removes any impact of the satellite biases and receiver biases on the detrended TEC, so the calculation of biases is largely not needed. If we were concerned with timescales closer to the length of a full GNSS arc of lock, residual bias effects on the projected vTEC may need to be considered, but likely would not be significant if at least an approximate bias is used.

## 2.5. *Spherical Elementary Current System (SECS)*

The SECS inversion technique (Amm and Viljanen, 1999) is used to estimate horizontal equivalent ionospheric currents (EICs) from the ground-based magnetic field measurements by several arrays of magnetometers in the North American sector and the western Greenland (Weygand et al., 2011; their Table 1). For each of these magnetometers the quiet-time background is subtracted from the measured field to give the disturbance component which determines the EICs (Weygand et al., 2011). For this study we will be using the spherical elementary current system (SECS) method to calculate a two-dimensional map of the ionospheric currents. Here we describe the SECS method. A two-dimensional picture of the ionospheric currents can be derived with an array of well-spaced ground magnetometers. The SECS method (Amm and Viljanen, 1999), which has been regularly applied to the International Monitor for Auroral Geomagnetic Effects (IMAGE) ground magnetometer array, can calculate the equivalent ionospheric currents (EICs), which are parallel to Earth's surface, and the SEC amplitudes, which are a proxy for the field-aligned-currents. The SECS technique defines two elementary current systems: a divergence-free elementary current system with currents that flow entirely within the ionosphere and a curl-free current system whose divergences represent the currents normal to the ionosphere. The superposition of these divergence-free and curl-free current systems can reproduce a vector field on a sphere. For this study we only calculate the divergence-free (equivalent ionospheric) currents, which are a combination of the real Hall and Pedersen currents. The temporal and spatial resolutions of the

**Formatted:** Font: Italic

**Formatted:** Font: (Default) Times New Roman, (Asian) Times New Roman

**Formatted:** Font: (Default) Times New Roman, (Asian) Times New Roman

**Formatted:** Font: (Default) Times New Roman, (Asian) Times New Roman

**Formatted:** Font: (Default) Times New Roman, (Asian) Times New Roman

**Formatted:** Font: (Default) Times New Roman, (Asian) Times New Roman

equivalent ionospheric currents are 10 s and 6.9° geographic longitude by 2.9° geographic latitude (see, Amm et al., 2002 for more details). In general, the EICs are calculated from a matrix inversion of the ground magnetic disturbances. One of the important features of this technique is that it requires no integration time of the magnetometer data. Unlike like AMPERE currents, which requires a 10 min integration time for many of the spacecraft to cross the polar region or the SWARM currents that only provide a slice of the ionospheric currents as they cross the auroral region. The technique (see, Weygand et al. 2011; their Figure 1) has been applied to magnetometers located in North America and Greenland for the last 15+ years (Weygand et al. 2012; 2016).

In the European sector, ground magnetic perturbances due to the ionospheric currents and 1D equivalent currents estimates are provided by the International Monitor for Auroral Geomagnetic Effects (IMAGE) array of magnetometers.

## 2.6. Solar wind data

The solar wind data are provided by the OMNIWeb (<http://omniweb.gsfc.nasa.gov>) (King and Papitashvili, 2005) and the Goddard Space Flight Center Space Physics Data Facility (<https://spdf.gsfc.nasa.gov/index.html>). The magnetic field, proton density and velocity measurements obtained by Advanced Composition Explorer (ACE) (Smith *et al.*, 1998) are used.

## 2.7. ERA5 meteorological reanalysis

The hourly reanalysis dataset ERA5 with spatial resolution of 0.25 x 0.25 degree (Hersbach et al., 2020) is a product of the European Centre for Medium-Range Weather Forecasts (ECMWF). The 300-hPa geopotential height, horizontal winds at 300 hPa, and the divergence of the horizontal wind at 150-hPa level are used. The alternating bands of convergence and divergence have been interpreted by Plougonven and Teitelbaum (2003) as gravity waves propagating to the lower stratosphere.

## 3. AGWs/TIDs originating from lower thermosphere at high latitudes

Formatted: Font: (Default) Times New Roman, (Asian) Times New Roman

Formatted: Font: (Default) Times New Roman, (Asian) Times New Roman

Formatted: Font: (Default) Times New Roman, (Asian) Times New Roman

Formatted: Font: (Default) Times New Roman, (Asian) Times New Roman

Formatted: Font: (Default) Times New Roman, (Asian) Times New Roman

Formatted: Font: (Default) Times New Roman, (Asian) Times New Roman

Formatted: Font: (Default) Times New Roman, (Asian) Times New Roman

Formatted: Font: 12 pt

Formatted: Font: 12 pt

Formatted: Font: 12 pt

Solar wind high-speed streams (HSSs) are associated with high-intensity, long-duration continuous auroral electrojet activity (HILDCAAs) that includes auroral substorms (Tsurutani and Gonzalez, 1987; Tsurutani et al., 1990, 1995). HILDCAAs are caused by trains of solar wind Alfvén waves (Belcher and Davis, 1971) that couple to the magnetosphere-ionosphere system (Dungey, 1961, 1995). This coupling extends to the neutral atmosphere and ionosphere because it is a source of aurorally excited gravity waves. Solar wind modulation of cusp particle signatures was associated with ionospheric flows (Rae et al., 2004). Solar wind Alfvén waves can modulate ionospheric convection and currents, most directly on the dayside, producing polar cap density patches and AGW/TIDs (Prikryl et al., 1999, 2005, 2022).

We now investigate cases of TIDs observed at high latitudes using the PFISR, SuperDARN and GNSS data supported by solar wind and ground-based magnetometers. In Section 3.1, we examine one case when PFISR in Poker Flat, Alaska, observed TIDs during geomagnetically quiet period on January 8, 2013 in the context of solar wind coupling to show evidence that the observed TIDs originated in the high-latitude dayside ionosphere poleward of Alaska, where there are no ground-based magnetometers to sense the ionospheric currents, but ionospheric convection is observed by SuperDARN. In Section 3.2, we present more examples of TIDs generated by solar wind-M-I-T coupling on the dayside. The TIDs were observed in the North America and Europe by SuperDARN and in the detrended  $vTEC$ .

### 3.1. Event of January 8/9, 2013

In the period from January 8 to 15 the PFISR beams scanned electron densities,  $N_e$  ( $\text{cm}^{-3}$ ), at altitudes from 150 to 500 km. In the detrended TEC maps over Alaska (<https://aer-nc-web.nict.go.jp/GPS/GLOBAL/MAP/2013/008/index.html>) the equatorward propagating TIDs were observed on each day during the daytime hours when the PFISR density data show signatures of downward propagating phase of TIDs. Fig. 24a shows  $N_e$  in logarithmic scale as a function of altitude observed by the radar beam 2 at temporal resolution of 3 min between 18:00 and 03:00 UT (09:00 and 18:00 LT) on January 8-9, 2013. The downward propagating phase of TIDs is readily seen superposed on the background of high daytime densities. To remove the background and highlight the TIDs with periods  $> 40$  min the time series for each altitude are detrended using a 33-point wide Savitzky-Golay filter (4<sup>th</sup> degree, 2<sup>nd</sup> order) (Fig. 24b). To show the equatorward

propagation of the TIDs across Alaska, Fig. 24c shows the detrended GNSS vTEC mapped at latitude bins along the longitude of the PFISR.

The geomagnetic activity on January 8 was low, with the  $Kp$ -index  $\leq 1$  except for a peak of 3- in the last 3-hourly interval caused by a substorm that occurred in the European sector. The northernmost magnetometer in Alaska in Barrow observed the north-south  $X$ -component magnetic field perturbation of  $\sim 230$  nT at 17:10 UT (see Fig. S2 in the Supplement) indicating the westward electrojet. At this time, the IMF was pointing downward ( $B_y < 0$ ) and eastward flows (see Fig. S3a in the Supplement) in the dawn convection cell corresponded with the westward electrojet sensed in Barrow. After 18:00 UT, as the IMF  $B_y$  reversed to duskward (Figure 2c), the convection cells receded further poleward of Alaska and the convection pattern become dominated by the dusk cell (see Fig. S3b in the Supplement). At this time, the distant westward electrojet over Beaufort Sea could no longer be detected by magnetometers.

The King Salmon Radar (KSR) beam 9 pointing northwest over the East Siberian Sea observed positive (towards the radar) line-of-sight (LoS) velocities indicating quasiperiodic (20-50 min) pulsed ionospheric flows (PIFs; Fig. 32a) in the dawn convection cell. At near ranges, the KSR radar observed enhancements in the sea scatter power (Fig. 32b) caused by a series of equatorward propagating TIDs. The Prince George Radar (PGR) beam 1 also observed the TIDs in the ground scatter power with periods similar to those of PIFs and the TIDs observed by PFISR (Fig. 2). To show the actual TID location in the ionosphere, instead of the slant range the ground-scatter range mapping (Bristow, Greenwald and Samson, 1994; Frisell *et al.*, 2014) is applied in Fig. 32d. Projected to the direction of beam 1, the estimated TIDs wavelengths ranged between  $\sim 200$  and  $500$  km, and phase velocities between  $\sim 100$  and  $300$  m/s.

The IMF southward turnings are expected to modulate the reconnection rate at the magnetopause leading to intensifications of the ionospheric convection/currents in the cusp footprint. One of the convection enhancements can be viewed in Fig. S3b in the Supplement. Pulsed ionospheric flows are known to be associated with particle precipitation in poleward moving auroral forms (Rae *et al.*, 2004). In the cusp, particle precipitation and Joule heating can be comparable energy source for AGWs/TIDs (Nykiel *et al.*, 2024). The time series of the ACE IMF  $B_y$  and  $B_z$ , as well as the

clock angle ( $B_z$ ,  $B_y$ ) counted from the geomagnetic north, with the  $180^\circ$  (dotted line) indicating southward turnings of the IMF are shown time-shifted in Fig. 32c. Normalized FFT spectra of the detrended IMF  $B_z$ ,  $B_y$ , and the Prince George radar ground scatter power (beam 1, gate 30, mapped GS range 730 km) are shown in the inset in Figure 32d. The spectra of the IMF  $B_z$  and the Prince George radar ground scatter power are very similar thus providing evidence that the generation of TIDs was driven by solar wind coupling to the dayside magnetosphere. The clock angle controls the reconnection rate at the magnetopause (Milan et al., 2012). The TIDs can be approximately associated with southward IMF turnings (positive deflections of the clock angle values towards  $180^\circ$  marked by arrows in Fig. 32). Of course, this is an approximate correspondence. The IMF observed by ACE does not represent exactly the IMF impacting the dayside magnetopause. It would require at least a spacecraft in front of the bow shock to monitor the IMF (e.g., Prikryl et al. 2002). But the observations of pulsed ionospheric flows (PIFs) and corresponding TIDs points to sources of these TIDs in the high-latitude ionosphere poleward of Alaska. Prikryl et al. (2005; their Figure 2) showed that the observed TID propagation times, horizontal wavelengths and phase velocities deduced from the ground-scatter are consistent with the results of ray tracing of the gravity wave energy from an ionospheric source.

While we focused here on January 8/9, on each day during the PFISR experiment from January 8 to 15 the solar wind-MIT coupling that modulated PIFs in the ionospheric cusp footprint poleward of Alaska launched TIDs that were observed by PFISR, as well as in the GNSS vTEC maps. Similarly, in the European sector, dayside TIDs propagating equatorward from their sources in the cusp over Svalbard were also observed. This can be viewed in Fig. S4 in the Supplement, and it is consistent with previous studies of PIFs in the ionospheric cusp resulting in TIDs (Prikryl et al., 2005; 2022).

### 3.2. Events of November 1 and 4-5, 2014

Fig. 4 shows the solar wind data indicating arrivals of HSS/CIRs marked by asterisks. The second one triggered a minor geomagnetic storm with the  $Dst$  index (Gonzalez et al., 1994) reaching maximum negative value of  $-44$  nT on November 4. Solar wind Alfvén waves permeate HSSs, and along with CIRs, are highly geoeffective when IMF  $B_z < 0$  (Tsurutani et al., 1987, 1995, 2006).

Following arrivals of HSS/CIRs (marked by asterisks in Fig. 3) On November 1 and 5, 2014, the solar wind Alfvén waves are characterized by the Walén relation between velocity  $V$  and magnetic field  $B$  (Yang, Chao and Lee, 2020). The components of the corresponding components of the magnetic field ( $B_y$  and  $B_z$ ) and velocity ( $V_y$  and  $V_z$ ) observed by ACE are correlated (Fig. 54a), which is a signature of solar wind Alfvén waves. For November 5, this can be viewed in Fig. S5a in the Supplement.

In the European sector, the SuperDARN Hankasalmi radar observed PIFs in the cusp over Svalbard, and equatorward propagating TIDs, which were also observed in the detrended  $v_{TEC}$ . Figs. 65 and 76 show the ionospheric LoS velocities and the radar scatter power (ground scatter shown in grey color in the velocity plot) observed by the radar beam 11 on November 1 and 5, respectively. The radar ground scatter (Figs. 6b and 7b) at ranges between 1000 and 1800 km shows tilted bands due to equatorward propagating TIDs. Applying the ground scatter mapping method (as already discussed in Section 3.1), the estimated MSTID wavelengths ranged between ~100 and 500 km, and phase velocities between ~100 and 300 m/s (Figs. S6a and S6b in the Supplement).

The ground magnetic field perturbations of the X-component observed in Ny Ålesund (NAL; <https://space.fmi.fi/image/www/index.php>) and 1D equivalent currents estimates that use all IMAGE magnetometers are superposed. The radar observed a series of intensifications of the negative (away from the radar) LoS velocities (PIFs) at ranges greater than ~2000 km on the dayside, starting at ~07:00 UT with the onset of ionospheric currents fluctuations sensed by the NAL magnetometer. The solar wind Alfvén waves modulated the dayside ionospheric currents launching AGWs driving the equatorward propagating TIDs observed in the radar ground scatter at ranges below ~2000 km. For November 1, Figs. 54b and 54c show the FFT spectra of detrended time series of IMF  $B_z$ , solar velocity  $V_z$ , the NAL X-component, and the Hankasalmi radar ground scatter power (beam 11, gate 25, slant range 1305 km) displaying peaks at similar frequencies/periods. For November 5, the FFT spectra can be viewed in Figs. S5b and S5c in the Supplement.

Figs. 87a and 87b show the TIDs observed in the detrended vTEC as alternating positive and negative anomalies mapped along longitude of 15°E on November 1 and 5, respectively. The equatorward propagating TIDs were observed at mid latitudes, but it is difficult to estimate their propagation speeds as they appear to have been disrupted due to interference with TIDs from tropospheric sources moving eastward to southeastward that areas discussed in Section 4.

The arrival of the HSS/CIR on November 4 triggered a minor geomagnetic storm ~~with the  $D_{st}$  index reaching maximum negative value of  $-44$  nT (Fig. 3) (Gonzalez *et al.*, 1994).~~ Similar to cases reported previously (Prikryl *et al.*, 2022), intense ionospheric currents in the North American sector auroral zone launched TIDs that were observed by the midlatitude SuperDARN radars and the detrended TEC. Before 4:00 UT at radar frequency at 11.5 MHz, the Fort Hays West (FWW) midlatitude radar beam 12 looking northwest over the central Canada observed the ionospheric scatter showing enhancements in the positive LoS velocities (toward the radar; Fig. 98a) due to fluctuating eastward ionospheric flows at the equatorward edge of an expanded dawn convection cell associated with the fluctuating westward electrojet. The ionospheric currents were sensed by magnetometers, including one in Fort Simpson (FSIM; [www.carisma.ca/](http://www.carisma.ca/)). The X component of the ground magnetic field and time series of the latitudinal maxima in EICs at the longitude of 120°W, are superposed. After 14:00 UT, when the radar frequency was set to 15 MHz, the HF propagation allowed to observe TIDs in the ground scatter. The ground scatter slant ranges between 1000 and 3000 km correspond to the mapped ground scatter ranges between 200 and 1200 km.

Two major intensifications of the westward electrojet at ~13:10 and 14:10 UT (Fig. 9b) launched LSTIDs observed in the ground scatter starting at ~14:00 and 15:00 UT. The mapped EICs in Fig. 109a show the first major intensification of the westward electrojet (the EIC maxima at each longitude are highlighted) that was followed by the second intensification an hour later (Fig. 9b). They launched equatorward propagating LSTIDs (wavelength greater than 1000 km) observed in the detrended vTEC maps (Fig. 109b). Fig. 110a shows the LSTIDs between 13:00 and 16:00 UT in the detrended vTEC mapped along longitude of 100°W in the North American sector. The approximate equatorward propagation speeds were between 500 and 800 m/s.

In the European sector, during the most disturbed time following the HSS/CIR arrival on November 4 the dayside auroral oval expanded down to latitude  $\sim 63^\circ\text{N}$ . Fig. 10b shows the equivalent ionospheric currents estimated from the IMAGE magnetometers. LSTIDs (Fig. 10c) that were launched by intensifications of the east electrojet were observed propagating equatorward at speeds between 400 and 500 m/s in mid latitudes are mapped along longitude of  $15^\circ\text{W}$  between 11:00 and 18:00 UT (Fig. 10b).

In summary, the cases discussed in Sections 3.1 and 3.2 highlight the importance of solar wind coupling to the M-I-T system, particularly on the dayside, in the generation of AGWs/TIDs. The fluctuations of the IMF, sometimes Alfvénic, modulate PIFs and ionospheric currents in the cusp launching GW/TIDs.

#### 4. AGWs/TIDs originating from sources in the troposphere

MSTIDs caused by GWs with periods of 10-40 min propagating obliquely upward in the thermosphere/ionosphere have been studied using multi-frequency and multi-point continuous HF Doppler sounding system located in the western part of Czechia ~~from July 2014 to June 2015~~ (Chum et al., 2021). The 2-D propagation analysis of the HF Doppler sounders data is applied to available signals to exclude data gaps and to select time intervals in which the phase shifts/time delays between signals corresponding to different sounding paths (transmitter-receiver pairs) were approximately constant.

The observed azimuths depend on season with southeastward propagation more likely in winter months, suggesting that cold season low pressure systems in the northeast Atlantic are sources of the GWs, which supports previously published results (Azeem et al., 2018) and points to winter jet stream as a likely source of GWs. In this section we examine such cases and trace TIDs in the detrended GNSS TEC maps (Fig. 12) and observed by the HF Doppler sounders propagating eastward to southeastward from intensifying low-pressure weather systems over the east Atlantic. The animated TEC maps can be viewed in the Supplement Video, which also shows the equatorward propagating TIDs that originated at high latitudes as discussed in Section 3.

#### 4.1. Events of November 1-8, 2014

Spectral and propagation analysis for all available 7.04 MHz signals from November 1 to 8, 2014 was performed (Fig. 134). Only daytime values are available because the critical frequency  $f_oF_2$  is too low at night (most of the nights are also not available at 4.65 MHz). On November 6 an enhanced noise (electromagnetic interference) prevented reliable analysis for a substantial part of the day. Fig. 134b shows dynamic spectra (periodograms) of Doppler shift signal obtained as the average of the maxima of three power spectral densities corresponding to three different transmitter – receiver pairs (Section 2) shown in Fig. 134a (including artificial offsets). The observed periods (Fig. 134b) range from 10 to about 40 min. The propagation azimuths (Fig. 134c) were mostly from 100 to about 160° (waves propagating south-eastward). In all cases, the azimuth is only plotted if the averaged Doppler fluctuations exceeded 0.12 Hz, the estimate of uncertainty of azimuth is less than 10° and the estimate of uncertainty in velocity is less than 10%. The phase velocities fluctuated typically between 100 and 200 m/s. Fig. 142 shows the analysis results on an expanded time scale to better see the TID characteristics for November 8.

During the period from November 1 to 8, 2014, the south-eastward propagating MSTIDs were observed by the HF sounders and detrended  $vTEC$ . Low-pressure systems deepening over the North-east Atlantic, shown in the surface pressure analysis charts ([https://www.wetter3.de/archiv\\_ukmet\\_dt.html](https://www.wetter3.de/archiv_ukmet_dt.html)), were likely sources of these MSTIDs propagating eastward to southeastward, as observed in the detrended  $vTEC$  maps (indicated by arrows in Figs. 123a,b) on November 1 and 8, 2014. At the same time, the  $vTEC$  maps on both days also reveal equatorward propagating TIDs at latitudes down to ~50°N that originated in the cusp ionospheric footprint over Svalbard, as already discussed in Section 3.2.

The Doppler shift frequencies (Fig. 14a) recorded at frequency 7.04 MHz on November 1 and 8, 2014 show temporal evolution of power spectral densities (color-coded arbitrary units) of received signals that correspond to three different transmitter-receiver pairs. There was enhanced noise due to the electromagnetic interference on 8 November from about 9:30 to 12:30 UT. The straight horizontal line in the upper signal trace in the spectrogram corresponds to ground wave from one of the transmitters, located only ~7 km from the receiver. The middle and bottom signal traces in the spectrogram correspond to other two transmitters. As described in more detail by Chum and

[Podolská \(2018\)](#) and [Chum et al. \(2021\)](#) in Section 2.2, the use of well correlated signals at two or three different frequencies makes it possible to determine a 3-D phase velocity vector. The results that are summarized in Table S1 in the Supplement separately for the observation at frequencies of 4.65 and 7.04 MHz show mostly similar values of horizontal velocities (ranging from ~100 to 200 m/s) and azimuths (ranging from ~90 to 145°).

In Fig. 14b (middle panels), the detrended  $vTEC$  mapped along the latitude of 50° shows eastward propagating TIDs towards the longitude of the HF sounding system that observed the TIDs (top panels). The bottom panels (Fig. 14c) show time series of the detrended  $vTEC$  at longitude of 7°E and the normalized FFT spectra that show peaks at periodicities of MSTIDs similar to those in Figs. 11b and 12b.

Cases of MSTIDs associated with intense low pressure systems were also observed on November 3 (~08:00-13:00 UT) (see Fig. S6 in the Supplement), November 7 (~08:00-13:00 UT) (see Fig. S7 in the Supplement), November 22 (~08:00-09:00 UT), November 24 (~07:30-10:30 UT), December 9 (~08:30-09:50 and 12:00-13:50 UT), December 10 (~07:30-09:50 and 12:00-13:30 UT), and December 24 (~10:00-14:00 UT).

#### 4.2. Events of December 5-7, 2024

Similarly to events discussed in Section 4.1, low-pressure systems deepening over the North-east Atlantic on December 5-7 were likely sources of GWs driving the observed southeastward propagating MSTIDs (Fig. 12c). To further support the results in Section 4.1 we analyzed these recent events recorded at 4.65 and 7.04 MHz. Due to the critical frequency of the ionosphere 4.65 MHz allows to obtain longer time intervals with usable signals but with smaller amplitudes. The signals at 7.04 MHz reflect from higher altitudes where the amplitudes are larger. The results of the spectral and propagation analysis for all available 7.03 MHz signals for December 5-7, 2024 are shown in Fig. 15. Fig. 15b shows dynamic spectra of Doppler shift signal obtained as the average of the frequencies corresponding to the maxima of the three power spectral densities for the three different transmitter – receiver pairs shown in Fig. 15a (including artificial offsets, which were removed before the spectral and propagation analysis). The observed periods of TIDs/GWs (Fig. 15b) range from a few minutes up to an hour. The propagation azimuths (Fig. 15c) were

mostly around 140 deg. (southeastward) and phase velocities fluctuated typically between 150 and 290 m/s.

#### *4.3. Comparison between TIDs observed in the detrended vTEC maps and by the HF Doppler sounding system*

The Doppler shift spectrograms recorded at frequency 7.04 MHz on November 8, 2014 and December 5, 2024 are shown in Fig. 16a (top panels). In Fig. 16b (middle panels), the detrended vTEC mapped along the latitude of 50° shows eastward propagating TIDs towards the longitude of the HF sounding system with estimated approximate velocities shown. The bottom panels (Fig. 16c) show time series of the detrended vTEC at longitude of 7°E with the normalized FFT spectra shown in the insets.

In November 2014, the amplitudes of MSTIDs observed in the detrended vTEC and by the HF Doppler sounder were relatively small, and the coverage by GNSS receivers at longitudes greater than 10°E was sparse. In contrast, in December 2024, the GNSS coverage significantly improved, and the amplitudes of MSTIDs observed both in the vTEC and by HF Doppler sounder were much larger.

While it is difficult to compare in detail the results obtained by these two very different techniques (one based on the global mapping of vTEC using the thin shell approximation at 350-km altitude, and the other local measurements dependent on the HF propagation and the critical frequency for reflection altitude), the phase velocities (Fig. 16b) and periods (Fig. 16c) of TIDs estimated from the detrended vTEC are similar to those obtained by the HF Doppler sounder as discussed in Sections 4.1 and 4.2 (Figs. 14 and 15).

More cases of eastward to south-eastward propagating MSTIDs observed by the HF Doppler sounder and in the detrended vTEC observed in 2014 on November 1, 3 and 7 (see Fig. S7-S9 in the Supplement), November 22 and 24, December 9-10, and December 24, were also associated with intense low-pressure systems in the North-east Atlantic.

#### 4.4.2. Physical mechanism of GW generation in the troposphere

While tropospheric convection is a common source of gravity waves (e.g., Azeem, 2021), no deep convection could be identified in the cold fronts of low-pressure systems over the North-east Atlantic (GIBBS). Mesoscale gravity waves generated by geostrophic adjustment processes and shear instability have been observed (Uccellini and Koch, 1987; Koch and Dorian, 1988). Plougonven and Zhang (2014) reviewed the current knowledge and understanding of gravity waves near jets and fronts. Plougonven and Teitelbaum (2003; their Figure 2) showed patterns of alternating bands of convergence and divergence in maps of divergence of the horizontal wind for the lower stratosphere, which have been interpreted as the signature of inertia-gravity waves propagating upwards above the tropopause. A conceptual model of a common synoptic pattern has been identified with a source of gravity waves near the axis of inflection in the 300-hPa geopotential height field (Koch and O’Handley, 1997; their Figure 2).

In Sections 4.1 and 4.2, the cases of MSTIDs on November 1 and 8, 2014 (Figs. 13 and 14) and December 5, 2024 propagating eastward to southeastward observed in the detrended vTEC maps (Fig. 12) and by the HF Doppler sounding system (Figs. 13, 14 and 15) are attributed to sources in the troposphere, namely deepening low pressure weather systems. This is consistent with the conceptual model referenced above. Using the ERA5 reanalysis (Hersbach *et al.*, 2020), Fig. 175 shows the 300-hPa geopotential height, approximate axis of inflection (a probable source region of gravity waves that is indicated by red dashed line), and horizontal winds at 300 hPa for the three events in 2014 and 2024. Fig. 175b shows the divergence of the horizontal wind at 150-hPa level. The alternating bands of convergence and divergence are similar to those interpreted by Plougonven and Teitelbaum (2003) as gravity waves propagating to the lower stratosphere. Other cases of MSTIDs on November 3 and 7 can be viewed in Figs. S76 and S87 in the Supplement. Mesoscale GWs propagating eastward and upward into the stratosphere generated by geostrophic adjustment processes and shear instability may be common and could be driving MSTIDs.

## 5. Discussion

The solar wind – MIT coupling is known to modulate the intensity of ionospheric currents, including the auroral electrojets, which in turn launch atmospheric gravity waves causing TIDs.

The cases of dayside equatorward propagating TIDs were observed with PFISR, SuperDARN, and detected in the detrended GNSS  $\nu$ TEC maps. This is consistent with previously published results and interpretations (e.g., Prikryl et al. 2022; and references therein). The dayside TIDs are commonly generated in the ionospheric footprint of the cusp. They were observed every day over Alaska during the PFISR experiment (8-15 January 2013) and in Europe (1-8 November 2014).

In Section 3.1, we have shown evidence that even during a geomagnetically very quiet period the TIDs that were observed by PFISR in Alaska can be attributed to sources at high latitudes (Fig. 3). Quasiperiodic intensifications of the high-latitude ionospheric convection that were the source of these TIDs were observed poleward of Alaska over the East Siberian and Beaufort Seas. The ionospheric currents associated with PIFs could not be detected by ground magnetometers, and the  $K_p$  index indicated a quiet period. The ionospheric footprint of the cusp where the pulsed ionospheric flows and associated currents are sources of TIDs may be located further poleward of any ground magnetometers. Low geomagnetic activity is often taken as a pretext to dismiss auroral sources of TIDs. Throughout the PFISR experiment from January 8 to 15, 2013 the TIDs that were observed on the dayside resulted from the solar wind-MIT coupling that modulated PIFs in the ionospheric cusp footprint poleward of Alaska. Similarly, in the European sector.

The importance of solar wind coupling to the M-I-T system, particularly on the dayside, for the generation of AGWs/TIDs (Prikryl et al. 2005) is further highlighted in Section 3.2 by cases where solar wind Alfvén waves modulated PIFs and ionospheric currents in the cusp launching AGWs/TIDs.

Regarding TIDs originating from the troposphere, there has been plentiful evidence of neutral atmosphere-ionosphere coupling via atmospheric gravity waves propagating into the upper atmosphere from sources in the lower atmosphere including convective storms (Alexander, 1996). Azeem and Barlage (2018) and Vadas and Azeem (2021) presented cases of convective storm generating TIDs, which exhibited partial to full concentric, or almost plane-parallel phase fronts. The latter TIDs were generated by extended squall line (Azeem and Barlage, 2018). However, in the cases discussed in Section 4.1 there was no significant convection in the cold fronts that would generate such TIDs. The eastward propagating MSTIDs observed in the detrended  $\nu$ TEC maps

and by the HF originated from low pressure sounding system were likely driven by GWs generated by geostrophic adjustment processes and shear instability in the troposphere. Geostrophic adjustment processes (Uccellini and Koch, 1987) generating gravity waves have not been previously considered as sources of TIDs. This is supported by the ERA5 meteorological reanalysis showing the GWs in the lower stratosphere.

The occurrence of eastward propagating MSTIDs at mid latitudes over Europe is very common in the cold season, and their association with low-pressure systems can be readily seen browsing the archive of detrended TEC maps (<https://aer-nc-web.nict.go.jp/GPS/EUROPE/MAP/#2014>). An assortment of such cases for December 2014 can be viewed in the Supplement Figures S10-S14. At the same time, the animations of TEC maps provided in the archive show equatorward propagating TIDs, including LSTIDs, originating at high latitudes that are generated by solar wind-M-I-T coupling. Dayside equatorward propagating TIDs that were observed in the detrended vTEC in Europe (15°E), the U.S. (100°W) and Alaska (148°W) on December 5, 2024 can be viewed in the Supplement Figure S15.

In this study, a multi-instrument approach is used to trace/attribute the observed TIDs to sources of AGWs in the upper and lower atmosphere, and to identify physical mechanisms. The solar wind coupling to the M-I-T system generates equatorward propagating TIDs on the dayside even during geomagnetically quiet conditions. This is important, because the auroral sources of TIDs observed during quiet conditions are often not considered or dismissed. On the other hand, ~~Intensifying~~ low pressure weather systems generate AGWs propagating to the lower stratosphere and beyond, driving TIDs even when there is no significant tropospheric convection. More work needs to be done to better understand such cases, and many aspects of the system as a whole should be considered when determining the source of TIDs, as simple metrics/indices hide critical details.

## 6. Summary and conclusions

Traveling ionospheric disturbances are observed by radars, Doppler sounders, and the GNSS TEC mapping technique. Medium- to large-scale TIDs propagating equatorward were generated by solar wind coupling to the dayside magnetosphere-ionosphere-thermosphere modulating

ionospheric convection and currents, including auroral electrojets. MSTIDs that were observed over Alaska by the Poker Flat incoherent scatter radar and by two SuperDARN radars are attributed to gravity waves generated in the ionospheric cusp footprint poleward of Alaska even when geomagnetic activity was low. Dayside MSTIDs were observed every day over Alaska during the 7-day PFISR experiment. In another case, following the arrival of high-speed solar wind stream that triggered a minor geomagnetic storm, major intensifications of the westward electrojet over the North American sector launched LSTIDs observed by a mid-latitude SuperDARN radar and in the detrended global TEC maps. In the European sector, the equatorward propagating TIDs are attributed to solar wind Alfvén waves coupling to the dayside magnetosphere modulating ionospheric convection and currents in the cusp footprint over Svalbard. On the other hand, the cases of eastward to southeastward propagating MSTIDs observed at mid latitudes in the detrended GNSS TEC maps and by the HF Doppler sounders in Czechia originated from low pressure weather systems intensifying in the north-east Atlantic. Gravity waves propagating from the troposphere and lower stratosphere were likely generated by geostrophic adjustment processes, which have not been linked to TIDs previously.

*Data availability.* The solar wind data are provided by the NSSDC OMNI (<http://omniweb.gsfc.nasa.gov>; NASA, 2022). The ground-based magnetometer data are archived at the website of the Canadian Array for Realtime Investigations of Magnetic Activity (CARISMA) (<https://www.carisma.ca/>; University of Alberta, 2022), and the IMAGE website at <https://space.fmi.fi/image/www/index.php?>. The PFISR data are available at <https://data.amisr.com/database/61/cal/2014/11/>. SuperDARN data are available at <https://www.frdr-dfdr.ca/repo/collection/superdarn> (FRDR, 2022). Line-of-Sight TEC data can be acquired from the Madrigal database (<http://cedar.openmadrigal.org/>; CEDAR, 2022) and CHAIN GNSS data are available at [http://chain.physics.unb.ca/chain/pages/data\\_download](http://chain.physics.unb.ca/chain/pages/data_download) (CHAIN, 2022).

Equivalent Ionospheric Currents (EICs) derived by the Spherical Elementary Currents Systems (SECS) technique are archived at <http://vmo.igpp.ucla.edu/data1/SECS/> (SECS, 2022) and [https://cdaweb.gsfc.nasa.gov/pub/data/aaa\\_special-purpose-datasets/spherical-elementary-and-equivalent-ionospheric-currents-weygand/](https://cdaweb.gsfc.nasa.gov/pub/data/aaa_special-purpose-datasets/spherical-elementary-and-equivalent-ionospheric-currents-weygand/); <https://doi.org/10.21978/P8D62B>, Weygand,

2009a; <https://doi.org/10.21978/P8PP8X>, Weygand, 2009b). The Czech HF Doppler shift spectrograms can be found in the archive at <http://datacenter.ufa.cas.cz/>.

GNSS data for this study were provided by the following organizations: International GNSS Service (IGS), UNAVCO (<https://www.unavco.org/data/gps-gnss/gps-gnss.html>), Dutch Permanent GNSS Array (<http://gnss1.tudelft.nl/dpga/rinex>), Can-Net (<https://www.can-net.ca/>), Scripps Orbit and Permanent Array Center (Garner, <http://garner.ucsd.edu/pub/>), French Institut Geographique National, Geodetic Data Archiving Facility (GeoDAF, <http://geodaf.mt.asi.it/index.html>), Crustal Dynamics Data Information System (CDDIS, <https://cddis.nasa.gov/archive/gnss/data/daily/>), National Geodetic Survey (<https://geodesy.noaa.gov/corsdata/>), Instituto Brasileiro de Geografia e Estatística ([http://geofp.ibge.gov.br/informacoes\\_sobre\\_posicionamento\\_geodesico/rbmc/dados/](http://geofp.ibge.gov.br/informacoes_sobre_posicionamento_geodesico/rbmc/dados/)), Instituto Tecnológico Agrario de Castilla y Leon (ITACyL, <ftp://ftp.itacyl.es/RINEX/>), TrigNet South Africa (<ftp://ftp.trignet.co.za>), The Western Canada Deformation Array (WCDA, <ftp://wcda.pgc.nrcan.gc.ca/pub/gpsdata/rinex>), Canadian High Arctic Ionospheric Network (CHAIN, [http://chain.physics.unb.ca/chain/pages/data\\_download](http://chain.physics.unb.ca/chain/pages/data_download)), Pacific Northwest Geodetic Array (PANGA, <http://www.geodesy.cwu.edu/pub/data/>), Centro di Ricerche Sismologiche, Système d'Observation du Niveau des Eaux Littorales (SONEL, <ftp://ftp.sonel.org/gps/data>), INGV - Rete Integrata Nazionale GPS (RING, <http://ring.gm.ingv.it/>), RENAG : REseau National GPS permanent (<http://rgp.ign.fr/DONNEES/diffusion/>), Australian Space Weather Services (<https://downloads.sws.bom.gov.au/wdc/gnss/data/>), GeoNet New Zealand (<https://www.geonet.org.nz/data/types/geodetic>), National Land Survey Finland (NLS, <https://www.maanmittauslaitos.fi/en/maps-and-spatial-data/positioning-services/rinex-palvelu>), SWEPOS Sweden (<https://swepos.lantmateriet.se/>), Norwegian Mapping Authority (Kartverket, <https://ftp.statkart.no/>), Geoscience Australia (<http://www.ga.gov.au/scientific-topics/positioning-navigation/geodesy/gnss-networks/data-and-site-logs>), Institute of Geodynamics, National Observatory of Athens (<https://www.gein.noa.gr/services/GPSData/>), and European Permanent GNSS Network (EUREF, [https://www.epncb.oma.be/networkdata/data\\_access/dailyandhourly/datacentres.php](https://www.epncb.oma.be/networkdata/data_access/dailyandhourly/datacentres.php)).

*Author contributions.* PP and RGG contributed to conception and design of the study. PP, DRT, JC, SC, RGG, and JMW acquired the resources and contributed to methodology, software, specific

data analysis, visualization, and organized the databases. PP wrote the first draft of the manuscript.

All authors contributed to manuscript revision and approved the submitted version.

*Competing interests.* The authors declare that they have no conflict of interest.

*Acknowledgments.* Infrastructure funding for CHAIN was provided by the Canada Foundation for Innovation and the New Brunswick Innovation Foundation. CHAIN operation is conducted in collaboration with the Canadian Space Agency (CSA). We are grateful to the Australian Bureau of Meteorology, Space Weather Services for the provision of GNSS data. CDDIS is one of the Earth Observing System Data and Information System (EOSDIS) Distributed Active Archive Centers (DAACs), part of the NASA Earth Science Data and Information System (ESDIS) project. Datasets and related data products and services are provided by CDDIS, managed by the NASA ESDIS project. This material is based on services provided by the GAGE Facility, operated by UNAVCO, Inc., with support from the National Science Foundation and the National Aeronautics and Space Administration under NSF Cooperative Agreement EAR-1724794. A. Contributions by the ACE (Norman F. Nees at Bartol Research Institute, David J. McComas at SWRI), NASA's SPDF/CDAWeb, and the NSSDC OMNIWeb are acknowledged. The PFISR was developed under NSF cooperative agreement ATM-0121483, and the data collection and analysis were supported under NSF cooperative agreement ATM-0608577. The authors acknowledge the use of SuperDARN data. SuperDARN is a collection of radars funded by the national scientific funding agencies of Australia, Canada, China, France, Italy, Japan, Norway, South Africa, United Kingdom, and the United States of America. The Fort Hays SuperDARN radars are maintained and operated by Virginia Tech under support by NSF grant AGS-1935110. The King Salmon and Prince George radars are operated under support of NSF grant AGS--2125323 from the Upper Atmospheric Facilities Program, and by the Canada Foundation for Innovation, Innovation Saskatchewan and the Canadian Space Agency, respectively. We thank the many different groups operating magnetometer arrays for providing data for this study, including the THEMIS UCLA magnetometer network (Ground-based Imager and Magnetometer Network for Auroral Studies). The AUTUMNX magnetometer network is funded through the Canadian Space Agency/Geospace Observatory (GO) Canada program, Athabasca University, Centre for Science/Faculty of Science and Technology. The Magnetometer Array for Cusp and Cleft Studies (MACCS) array is supported by the US National Science Foundation grant ATM-0827903 to Augsburg College. The Solar and Terrestrial Physics (STEP) magnetometer file storage is at the Department of Earth and

Planetary Physics, University of Tokyo and maintained by Kanji Hayashi (hayashi@grl.s.u-tokyo.ac.jp). The McMAC Project is sponsored by the Magnetospheric Physics Program of National Science Foundation through grant AGS-0245139. The ground magnetic stations are operated by the Technical University of Denmark, National Space Institute (DTU Space). The IMAGE magnetometer stations are maintained by 10 institutes from Finland, Germany, Norway, Poland, Russia, Sweden, Denmark, and Iceland. The Canadian Space Science Data Portal is funded in part by the Canadian Space Agency contract numbers 9 F007-071429 and 9 F007-070993. The Canadian Magnetic Observatory Network (CANMON) is maintained and operated by the Geological Survey of Canada. David R. Themens's contribution to this work is supported in part through CSA grant no. 21SUSTCHAI and through the United Kingdom Natural Environment Research Council (NERC) EISCAT3D: Fine-scale structuring, scintillation, and electrodynamics (FINESSE) (NE/W003147/1) and DRivers and Impacts of Ionospheric Variability with EISCAT-3D (DRIIVE) (NE/W003368/1) projects. James M. Weygand acknowledges NASA grant: 80NSSC18K0570, 80NSSC18K1220, NASA contract: 80GSFC17C0018 (HPDE), NAS5-02099(THEMIS). Shibaji Chakraborty thanks the National Science Foundation for support under grant AGS-1935110.

*Financial support.* David R. Themens's contribution to this work is supported in part through CSA grant no. 21SUSTCHAI and through the United Kingdom Natural Environment Research Council (NERC) EISCAT3D: Fine-scale structuring, scintillation, and electrodynamics (FINESSE) (NE/W003147/1) and DRivers and Impacts of Ionospheric Variability with EISCAT-3D (DRIIVE) (NE/W003368/1) projects. J. Chum was funded by T-FORS project by European Commission (number SEP 210818055) and by the Johannes Amos Comenius Programme (P JAC), project No. CZ.02.01.01/00/22\_008/0004605, Natural and anthropogenic georisks“. James M. Weygand is supported by the NASA grant: 80NSSC18K0570, 80NSSC18K1220, NASA contract: 80GSFC17C0018 (HPDE), NAS5-02099(THEMIS). Shibaji Chakraborty is supported by the National Science Foundation under grant AGS-1935110.

## References

Afraimovich, E. L., Kosogorov, E. A., Leonovich, L. A., Pala martchouk, K. S., Perevalova, N. P., and Pirog, O. M.: Determining parameters of large-scale traveling ionospheric disturbances of auroral origin using GPS-arrays, J. Atmos. Sol.-Terr. Phy., 62, 553–565, [https://doi.org/10.1016/S1364-6826\(00\)00011-0](https://doi.org/10.1016/S1364-6826(00)00011-0), 2000.

Alexander, M. J.: A simulated spectrum of convectively generated gravity waves: Propagation

from the tropopause to the mesopause and effects on the middle atmosphere, *Journal of Geophysical Research: Atmospheres*, 101(D1), pp. 1571–1588. doi: <https://doi.org/10.1029/95JD02046>, 1996.

*Amm, O., Engebretson, M. J., Hughes, T., Newitt, L., Viljanen, A., and Watermann, J.: A traveling convection vortex event study: Instantaneous ionospheric equivalent currents, estimation of field-aligned currents, and the role of induced currents, J. Geophys. Res., 107, 1334, doi:10.1029/2002JA009472, 2002.*

Azeem, I. et al.: Multisensor profiling of a concentric gravity wave event propagating from the troposphere to the ionosphere, *Geophysical Research Letters*, 42(19), pp. 7874–7880. doi: <https://doi.org/10.1002/2015GL065903>, 2015.

Azeem, I. and Barlage, M.: Atmosphere-ionosphere coupling from convectively generated gravity waves, *Advances in Space Research*, 61(7), pp. 1931–1941. doi: <https://doi.org/10.1016/j.asr.2017.09.029>, 2018.

Azeem, I.: Asymmetry of near-noncentric traveling ionospheric disturbances due to Doppler-shifted atmospheric gravity waves, *Frontiers in Astronomy and Space Sciences*, 8, <https://doi.org/10.3389/fspas.2021.690480>, 2021.

Balthazor, R. L. and J., R.: A study of atmospheric gravity waves and travelling ionospheric disturbances at equatorial latitudes, *Ann. Geophys.*, 15. Available at: <http://www.ann-geophys.net/15/1048/1997/>, 1997.

Becker, E., Goncharenko, L., Harvey, V. L., & Vadas, S. L.: Multi-step vertical coupling during the January 2017 sudden stratospheric warming. *Journal of Geophysical Research: Space Physics*, 127, e2022JA030866. <https://doi.org/10.1029/2022JA030866>, 2022.

Becker, E., Vadas, S. L., Bossert, K., Harvey, V. L., Zülicke, C., & Hoffmann, L.: A High-resolution whole-atmosphere model with resolved gravity waves and specified large-scale dynamics in the troposphere and stratosphere. *Journal of Geophysical Research: Atmospheres*, 127, e2021JD035018. <https://doi.org/10.1029/2021JD035018>, 2022.

Belcher, J. W., and Davis, L., Jr.: Large-amplitude Alfvén waves in the interplanetary medium, *J. Geophys. Res.*, 76, 3534–3563, 1971.

Bertin, F., Testud, J., Kersley, L., and Rees, P. R.: The meteorological jet stream as a source of medium scale gravity waves in the thermosphere: an experimental study, *Journal of Atmospheric and Terrestrial Physics*, 40(10), pp. 1161–1183. doi: [https://doi.org/10.1016/0021-9169\(78\)90067-3](https://doi.org/10.1016/0021-9169(78)90067-3), 1978.

Bertin, F., Testud, J. and Kersley, L.: Medium scale gravity waves in the ionospheric F-region and their possible origin in weather disturbances, *Planetary and Space Science*, 23(3), pp. 493–507. doi: [https://doi.org/10.1016/0032-0633\(75\)90120-8](https://doi.org/10.1016/0032-0633(75)90120-8), 1975.

Formatted: Font: Italic

Formatted: Font: Not Bold

- 851
- 852 Bossert, K., Vadas, S. L., Hoffmann, L., Becker, E., Harvey, V. L., & Bramberger, M.:  
 853 Observations of stratospheric gravity waves over Europe on 12 January 2016: The role of the polar  
 854 night jet. *Journal of Geophysical Research: Atmospheres*, **125**, e2020JD032893.  
 855 <https://doi.org/10.1029/2020JD032893>, 2020.
- 856
- 857 Bossert, K., Paxton, L. J., Matsuo, T., Goncharenko, L., Kumari, K., & Conde, M.: Large-scale  
 858 traveling atmospheric and ionospheric disturbances observed in GUVI with multi-instrument  
 859 validations. *Geophysical Research Letters*, **49**, e2022GL099901.  
 860 <https://doi.org/10.1029/2022GL099901>, 2022.
- 861
- 862
- 863 Bristow, W. A., Greenwald, R. A. and Samson, J. C.: Identification of high-latitude acoustic  
 864 gravity wave sources using the Goose Bay HF Radar, *Journal of Geophysical Research: Space*  
 865 *Physics*, **99**(A1), pp. 319–331. doi: <https://doi.org/10.1029/93JA01470>, 1994.
- 866
- 867 Cai, H. T., Yin, F., Ma, S. Y., and McCrea, I. W.: Observations of AGW/TID propagation across  
 868 the polar cap: a case study, *Annales Geophysicae*, **29**(8), pp. 1355–1363. doi: 10.5194/angeo-29-  
 1355-2011, 2011.
- 869 Cheng, P.-H., Lin, C., Otsuka, Y., Liu, H., Rajesh, P. K., Chen, C.-H., Lin, J.-T., and Chang, M. T.:  
 870 Statistical study of medium-scale traveling ionospheric disturbances in low-latitude ionosphere  
 871 using an automatic algorithm, *Earth Planets Space* **73**, 105, [https://doi.org/10.1186/s40623-021-](https://doi.org/10.1186/s40623-021-01432-1)  
 872 01432-1, 2021.
- 873 Cherniak, I. and Zakharenkova, I.: Large-scale traveling ionospheric disturbances origin and  
 874 propagation: Case study of the December 2015 geomagnetic storm, *Space Weather*, **16**, 1377–  
 875 1395, <https://doi.org/10.1029/2018SW001869>, 2018.
- 876
- 877 Chimonas, G.: The equatorial electrojet as a source of long period travelling ionospheric  
 878 disturbances, *Planetary and Space Science*, **18**(4), pp. 583–589. doi:  
[https://doi.org/10.1016/0032-0633\(70\)90133-9](https://doi.org/10.1016/0032-0633(70)90133-9), 1970.
- 879
- 880 Chimonas, G. and Hines, C. O.: Atmospheric gravity waves launched by auroral currents,  
*Planetary and Space Science*, **18**(4), pp. 565–582. doi: 10.1016/0032-0633(70)90132-7, \1970.
- 881
- 882 Chum J., Podolská K.: 3D analysis of GW propagation in the ionosphere. *Geophysical Research*  
*Letters*, **45**, 11,562–11,571, <https://doi.org/10.1029/2018GL079695>, 2018.
- 883
- 884 Chum, J., Podolská, K., Rusz, J., Baše, J., and Tedoradze, N.: Statistical investigation of gravity  
 885 wave characteristics in the ionosphere, *Earth, Planets and Space*, **73**(1), p. 60. doi:  
 886 10.1186/s40623-021-01379-3, 2021.
- 887
- 888 Crowley, G. and Williams, P. J. S.: Observations of the source and propagation of atmospheric  
 gravity waves, *Nature*, **328**(6127), pp. 231–233. doi: 10.1038/328231a0, 1988.

Formatted: Font: Not Italic

Formatted: Font: Not Bold

- 889 [Deng, Y., Heelis, R., Lyons, L. R., Nishimura, Y., and Gabrielse, C.: Impact of flow bursts in the](#)  
 890 [auroral zone on the ionosphere and thermosphere, \*Journal of Geophysical Research: Space\*](#)  
 891 [Physics, 124, 10459–10467. <https://doi.org/10.1029/2019JA026755>, 2020.](#)
- 892 Dungey, J. W.: Interplanetary Magnetic Field and the Auroral Zones. *Phys. Rev. Lett.* 6, 47–48.  
 893 <https://doi.org/10.1103/PhysRevLett.6.47>, 1961.
- 894 Dungey, J. W.: Origin of the concept of reconnection and its application to the magnetopause: A  
 895 historical view, *Physics of the Magnetopause*. Geophysical Monograph 90, edited by P. Song,  
 896 B.U.O. Sonnerup, and M.F. Thomsen, pp. 17–19, AGU, Washington, D.C., 1995.
- 897 Frissell, N. A., Baker, J. B. H., Ruohoniemi, J. M., Gerrard, A. J., Miller, E. S., Marini, J. P.,  
 898 West, M. L., and Bristow, W. A.: Climatology of medium-scale traveling ionospheric  
 899 disturbances observed by the midlatitude Blackstone SuperDARN radar, *Journal of Geophysical*  
 900 *Research: Space Physics*, 119(9), pp. 7679–7697. doi: <https://doi.org/10.1002/2014JA019870>,  
 901 2014.
- 902 Frissell, N. A., Baker, J. B. H., Ruohoniemi, J. M., Greenwald, R. A., Gerrard, A. J., Miller, E.  
 903 S., and West, M. L.: Sources and characteristics of medium-scale traveling ionospheric  
 904 disturbances observed by high-frequency radars in the North American sector, *Journal of*  
 905 *Geophysical Research: Space Physics*, 121(4), pp. 3722–3739,  
 906 <https://doi.org/10.1002/2015JA022168>, 2016.
- 907 Goncharenko, L., Harvey, V. L., Cullens, C., Becker, E., Zhang, S.-R., and Coster, A.: Influence  
 908 of stratospheric gravity waves on TID activity at middle latitudes, in *EGU General Assembly*  
 909 *Conference Abstracts*, pp. EGU22-6823, doi: 10.5194/egusphere-egu22-6823, 2022.
- 910 Gonzalez, W. D., Joselyn, J. A., Kamide, Y., Kroehl, H. W., Rostoker, G., Tsurutani, B. T., and  
 911 Vasyliunas, V. M.: What is a geomagnetic storm?, *Journal of Geophysical Research: Space*  
 912 *Physics*, 99(A4), pp. 5771–5792, doi: <https://doi.org/10.1029/93JA02867>, 1994.
- 913 Hajkowicz, L. A.: Auroral electrojet effect on the global occurrence pattern of large scale  
 914 travelling ionospheric disturbances, *Planetary and Space Science*, 39(8), pp. 1189–1196., doi:  
 915 [https://doi.org/10.1016/0032-0633\(91\)90170-F](https://doi.org/10.1016/0032-0633(91)90170-F), 1991.
- 916 Heinselman, C. J. and Nicolls, M. J.: A Bayesian approach to electric field and E-region neutral  
 917 wind estimation with the Poker Flat Advanced Modular Incoherent Scatter Radar, *Radio Science*,  
 918 43(5). doi: <https://doi.org/10.1029/2007RS003805>, 2008.
- 919 Hersbach, H., Bell, B., Berrisford, P., Hirahara, S., Horányi, A., Muñoz-Sabater, J., Nicolas, J.,  
 920 Peubey, C., Radu, R., Schepers, D., Simmons, A., Soci, C., Abdalla, S., Abellan, X., Balsamo,  
 921 G., Bechtold, P., Biavati, G., Bidlot, J., Bonavita, M., De Chiara, G., Dahlgren, P., Dee, D.,  
 922 Diamantakis, M., Dragani, R., Flemming, J., Forbes, R., Fuentes, M., Geer, A., Haimberger, L.,  
 923 Healy, S., Hogan, R. J., Hólm, E., Janisková, M., Keeley, S., Laloyaux, P., Lopez, P., Lupu, C.,  
 924 Radnoti, G., de Rosnay, P., Rozum, I., Vamborg, F., Villaume, S., and Thépaut, J.-N.: The ERA5  
 925 global reanalysis, *Q. J. R. Met. Soc.*, 146(730), pp. 1999–2049. doi:  
 926 <https://doi.org/10.1002/qj.3803>, 2020.

- 927 Hines, C. O.: Internal Atmospheric Gravity Waves At Ionospheric Heights, *Canadian Journal of*  
 928 *Physics*, 38(11), pp. 1441–1481. doi: 10.1139/p60-150, 1960.
- 929 Hocke, K. and Schlegel, K.: A review of atmospheric gravity waves and travelling ionospheric  
 930 disturbances: 1982-1995, *Annales Geophysicae*, 14(9), pp. 917–940, doi: 10.1007/s00585-996-  
 931 0917-6, 1996.
- 932 Huang, C.-S., Sofko, G. J., Kustov, A. V., MacDougall, J. W., Andre, D. A., Hughes, W. J., and  
 933 Papitashvili, V. O.: Quasi-periodic ionospheric disturbances with a 40-min period during  
 934 prolonged northward interplanetary magnetic field, *Geophysical Research Letters*, 27(12), pp.  
 935 1795–1798, doi: <https://doi.org/10.1029/1999GL003731>, 2000.
- 936 Huang, C.-S., Andre, D. A. and Sofko, G. J.: Observations of solar wind directly driven auroral  
 937 electrojets and gravity waves, *Journal of Geophysical Research: Space Physics*, 103(A10), pp.  
 938 23347–23356. doi: <https://doi.org/10.1029/98JA02297>, 1998.
- 939 Hunsucker, R. D.: Atmospheric gravity waves generated in the high-latitude ionosphere: A  
 940 review, *Reviews of Geophysics*, 20(2), pp. 293–315, doi: 10.1029/RG020i002p00293, 1982.
- 941
- 942 [Inchin, P. A., Bhatt, A., Bramberger, M., Chakraborty, S., Debchoudhury, S., and Heale, C.: Atmospheric and ionospheric responses to orographic gravity waves prior to the December 2022 cold air outbreak. \*Journal of Geophysical Research: Space Physics\*, 129, e2024JA032485. <https://doi.org/10.1029/2024JA032485>, 2024.](#)
- 946 van de Kamp, M., Pokhotelov, D. and Kauristie, K.: TID characterised using joint effort of  
 947 incoherent scatter radar and GPS, *Annales Geophysicae*, 32(12), pp. 1511–1532, doi:  
 948 10.5194/angeo-32-1511-2014, 2014.
- 949 [Kelley, I. J., Kunduri, B. S. R., Baker, J. B. H., Ruohoniemi, J. M., and Shepherd, S. G.: Storm Time Electrified MSTIDs Observed Over Mid-Latitude North America, \*Journal of Geophysical Research: Space Physics\*, 128\(3\), p. e2022JA031115, doi: <https://doi.org/10.1029/2022JA031115>, 2023.](#)
- 953 [Kikuchi, T., Hashimoto, K.K.: Transmission of the electric fields to the low-latitude ionosphere in the magnetosphere-ionosphere current circuit, \*Geosci. Lett.\* 3, 4, <https://doi.org/10.1186/s40562-016-0035-6>, 2014.](#)
- 956 King, J. H. and Papitashvili, N.: Solar wind spatial scales in and comparisons of hourly Wind  
 957 and ACE plasma and magnetic field data, *Journal of Geophysical Research*, 110(A2), p. A02104.  
 958 doi: 10.1029/2004JA010649, 2005.
- 959 Koch, S. E. and Dorian, P. B.: A Mesoscale Gravity Wave Event Observed during CCOPE. Part  
 960 III: Wave Environment and Probable Source Mechanisms, *Monthly Weather Review*, 116(12),  
 961 pp. 2570–2592. doi: [https://doi.org/10.1175/1520-0493\(1988\)116<2570:AMGWEO>2.0.CO;2](https://doi.org/10.1175/1520-0493(1988)116<2570:AMGWEO>2.0.CO;2),  
 962 1988.

- 963 Koch, S. E. and OHandley, C.: Operational Forecasting and Detection of Mesoscale Gravity  
 964 Waves, *Weather and Forecasting*, 12(2), pp. 253–281, doi: [https://doi.org/10.1175/1520-0434\(1997\)012<0253:OFADOM>2.0.CO;2](https://doi.org/10.1175/1520-0434(1997)012<0253:OFADOM>2.0.CO;2), 1997.
- 966 Lewis, R. V, Williams, P. J. S., Millward, G. H., and Quegan, S.: The generation and  
 967 propagation of atmospheric gravity waves from activity in the auroral electrojet, *Journal of*  
 968 *Atmospheric and Terrestrial Physics*, 58(6), pp. 807–820, doi: [https://doi.org/10.1016/0021-9169\(95\)00075-5](https://doi.org/10.1016/0021-9169(95)00075-5), 1996.
- 970 Mayr, H. G., Harris, I., Varosi, F., and Herrero, F. A.: Global Excitation of Wave Phenomena in  
 971 a Dissipative Multiconstituent Medium. 1. Transfer Function of the Earth's Thermosphere,  
 972 *Journal of Geophysical Research*, 89(A12), pp. 10929–10959, doi: [10.1029/JA089iA12p10929](https://doi.org/10.1029/JA089iA12p10929),  
 973 1984a.
- 974 Mayr, H. G., Harris, I., Varosi, F., and Herrero, F. A.: Global Excitation of Wave Phenomena in  
 975 a Dissipative Multiconstituent Medium - 2. Impulsive Perturbations in the Earth's Thermosphere,  
 976 *Journal of Geophysical Research*, 89(A12), pp. 10961–10986. doi: [10.1029/JA089iA12p10961](https://doi.org/10.1029/JA089iA12p10961),  
 977 1984b.
- 978 Mayr, H. G., Talaat, E. R. and Wolven, B. C.: Global propagation of gravity waves generated  
 979 with the whole atmosphere transfer function model, *Journal of Atmospheric and Solar-Terrestrial*  
 980 *Physics*, 104, pp. 7–17, doi: [10.1016/j.jastp.2013.08.001](https://doi.org/10.1016/j.jastp.2013.08.001), 2013.
- 981 McWilliams, K. A., Yeoman, T. K. and Provan, G.: A statistical survey of dayside pulsed  
 982 ionospheric flows as seen by the CUTLASS Finland HF radar, *Annales Geophysicae*, 18(4), pp.  
 983 445–453, doi: [10.1007/s00585-000-0445-8](https://doi.org/10.1007/s00585-000-0445-8), 2000.
- 984 Milan, S. E., Gosling, J. S., and Hubert, B.: Relationship between interplanetary parameters and  
 985 the magnetopause reconnection rate quantified from observations of the expanding polar cap, *J.*  
 986 *Geophys. Res.*, 117, A03226, doi: [10.1029/2011JA017082](https://doi.org/10.1029/2011JA017082) 2012.
- 987 Millward, G.: A resonance effect in AGWs created by periodic recurrent bursts in the auroral  
 988 electric field, *Annales Geophysicae*, 12(1), pp. 94–94, 1994.
- 989 Millward, G. H., Quegan, S., Moffett, R. J., Fuller-Rowell, T. J., and Rees, D.: A modelling  
 990 study of the coupled ionospheric and thermospheric response to an enhanced high-latitude  
 991 electric field event, *Planetary and Space Science*, 41(1), pp. 45–56, doi: [10.1016/0032-0633\(93\)90016-U](https://doi.org/10.1016/0032-0633(93)90016-U), 1993a.
- 993 Millward, G. H., Moffett, R. J., Quegan, S., and Fuller-Rowell, T. J.: Effects of an atmospheric  
 994 gravity wave on the midlatitude ionospheric F layer, *Journal of Geophysical Research: Space*  
 995 *Physics*, 98(A11), pp. 19173–19179. doi: [10.1029/93ja02093](https://doi.org/10.1029/93ja02093), 1993b.
- 996 Mrak, S., Semeter, J., Nishimura, Y., Hirsch, M., and Sivasdas, N.: Coincidental TID Production  
 997 by Tropospheric Weather During the August 2017 Total Solar Eclipse, *Geophysical Research*  
 998 *Letters*, 45(20), pp. 10,903–910,911, doi: <https://doi.org/10.1029/2018GL080239>, 2018.
- 999 Munteanu, C., Hamada, A., and Mursula, K.: High-speed solar wind streams in 2007–2008:

- Turning on the Russell-McPherron effect, *Journal of Geophysical Research: Space Physics*, 124, <https://doi.org/10.1029/2019JA026846>, 2019.
- Negrea, C., Munteanu, C., and Echim, M. M.: Global ionospheric response to a periodic sequence of HSS/CIR events during the 2007–2008 solar minimum, *Journal of Geophysical Research: Space Physics*, 126, e2020JA029071, <https://doi.org/10.1029/2020JA029071>, 2021.
- Nicolls, M. J., and Heinselman, C. J.: Three-dimensional measurements of traveling ionospheric disturbances with the Poker Flat Incoherent Scatter Radar, *Geophys. Res. Lett.*, 34, L21104, doi:[10.1029/2007GL031506](https://doi.org/10.1029/2007GL031506), 2007.
- Nishimura, Y., Zhang, S. R., Lyons, L. R., Deng, Y., Coster, A. J., Moen, J. I., Clausen, L. B., Bristow, W. A. and Nishitani, N.: Source region and propagation of dayside large-scale traveling ionospheric disturbances, *Geophysical Research Letters*, 47, e2020GL089451, <https://doi.org/10.1029/2020GL089451>, 2020.
- Nishioka, M., Tsugawa, T., Kubota, M., and Ishii, M.: Concentric waves and short-period oscillations observed in the ionosphere after the 2013 Moore EF5 tornado, *Geophysical Research Letters*, 40(21), pp. 5581–5586, doi: <https://doi.org/10.1002/2013GL057963>, 2013.
- Nishitani, N., Ruohoniemi, J. M., Lester, M., Baker, J. B. H., Koustov, A. V., Shepherd, S. G., Chisham, G., Hori, T., Thomas, E. G., Makarevich, R. A., Marchaudon, A., Ponomarenko, P., Wild, J. A., Milan, S. E., Bristow, W. A., Devlin, J., Miller, E., Greenwald, R. A., Ogawa, T., and Kikuchi, T.: Review of the accomplishments of mid-latitude Super Dual Auroral Radar Network (SuperDARN) HF radars, *Progress in Earth and Planetary Science*, 6(1), p. 27, doi: 10.1186/s40645-019-0270-5, 2019.
- Nykiel, G., Ferreira, A., Günzkofer, F., Iochem, P., Tasnim, S., and Sato, H.: Large-Scale Traveling Ionospheric Disturbances over the European sector during the geomagnetic storm on March 23–24, 2023: Energy deposition in the source regions and the propagation characteristics, *Journal of Geophysical Research: Space Physics*, 129, e2023JA032145, <https://doi.org/10.1029/2023JA032145>, 2024.
- Plougonven, R. and Teitelbaum, H.: Comparison of a large-scale inertia-gravity wave as seen in the ECMWF analyses and from radiosondes, *Geophysical Research Letters*, 30(18), doi: <https://doi.org/10.1029/2003GL017716>, 2003.
- Plougonven, R. and Zhang, F.: Internal gravity waves from atmospheric jets and fronts, *Reviews of Geophysics*, 52(1), pp. 33–76. doi: <https://doi.org/10.1002/2012RG000419>, 2014.
- Press, W. H. and Teukolsky, S. A.: Savitzky-Golay Smoothing Filters, *Comput. Phys.* 4 (6): 669–672. <https://doi.org/10.1063/1.4822961>, 1990.
- Prikryl, P., MacDougall, J. W., Grant, I. F., Steele, D. P., Sofko, G. J., and Greenwald, R. A.: Polar patches generated by solar wind Alfvén wave coupling to the dayside magnetosphere, *Advances in Space Research*, 23(10). doi: 10.1016/S0273-1177(99)00390-7, 1999.

**Formatted:** Font: (Default) Times New Roman, (Asian) Times New Roman, 12 pt

**Formatted:** Font: (Default) Times New Roman, (Asian) Times New Roman, 12 pt, Not Italic

**Formatted:** Font: (Default) Times New Roman, (Asian) Times New Roman, 12 pt

- 1037 Prikryl, P., Provan, G., McWilliams, K. A., and Yeoman, T. K.: Ionospheric cusp flows pulsed  
1038 by solar wind Alfvén waves, *Annales Geophysicae*, 20(2), doi: 10.5194/angeo-20-161-2002,  
1039 2002.
- 1040 Prikryl, P., Muldrew, D. B., Sofko, G. J., and Ruohoniemi, J. M.: Solar wind Alfvén waves: A  
1041 source of pulsed ionospheric convection and atmospheric gravity waves, *Annales Geophysicae*,  
1042 23(2), pp. 401–417, doi: 10.5194/angeo-23-401-2005, 2005.
- 1043 Prikryl, P., Gillies, R. G., Themens, D. R., Weygand, J. M., Thomas, E. G., and Chakraborty, S.:  
1044 Multi-instrument observations of polar cap patches and traveling ionospheric disturbances  
1045 generated by solar wind Alfvén waves coupling to the dayside magnetosphere, *Annales*  
1046 *Geophysicae*, 40(6), pp. 619–639, doi: 10.5194/angeo-40-619-2022, 2022.
- 1047 Rae, I. J., Fenrich, F. R., Lester, M., McWilliams, K. A., and Scudder, J. D.: Solar wind  
1048 modulation of cusp particle signatures and their associated ionospheric flows, *J. Geophys. Res.*,  
1049 109, A03223, doi: [10.1029/2003JA010188](https://doi.org/10.1029/2003JA010188), 2004.
- 1050 Richmond, A. D.: Gravity wave generation, propagation, and dissipation in the thermosphere,  
1051 *Journal of Geophysical Research*, 83(A9), p. 4131, doi: 10.1029/ja083ia09p04131, 1978.
- 1052 [Richmond, A.D.: Large-amplitude gravity wave energy production and dissipation in the](https://doi.org/10.1029/JA084iA05p01880)  
1053 [thermosphere, \*Journal of Geophysical Research: Space Physics\*, 84\(A5\), 1880–1890,](https://doi.org/10.1029/JA084iA05p01880)  
1054 <https://doi.org/10.1029/JA084iA05p01880>, 1979.
- 1055 Samson, J. C., Greenwald, R. A., Ruohoniemi, J. M., and Baker, K. B.: High-frequency radar  
1056 observations of atmospheric gravity waves in the high latitude ionosphere, *Geophysical Research*  
1057 *Letters* 16, 875–878, 1989.
- 1058 Samson, J. C., Greenwald, R. A., Ruohoniemi, J. M., Frey, A., Baker, K. B.: Goose bay radar  
1059 observations of earth-reflected, atmospheric gravity-waves in the high-latitude ionosphere, *J.*  
1060 *Geophys. Res.* 95(A6):7693–7709, <https://doi.org/10.1029/JA095iA06p07693>, 1990.
- 1061 Smith, C. W., LHeureux, J., Ness, N. F., Acuña, M. H., Burlaga, L. F., and Scheifele, J.: The  
1062 ACE Magnetic Fields Experiment, *Space Science Reviews*, 86(1), pp. 613–632. doi:  
1063 10.1023/A:1005092216668, 1998.
- 1064 [SuperDARN Data Analysis Working Group, Thomas, E. G., Reimer, A. S., Bland, E. C., Burrell,](https://doi.org/10.5281/zenodo.7467337)  
1065 [A. G., Grocott, A., Ponomarenko, P. V., Schmidt, M. T., Shepherd, S. G., Sterne, K. T., and](https://doi.org/10.5281/zenodo.7467337)  
1066 [Walach, M.-T.: SuperDARN Radar Software Toolkit \(RST\) 5.0 \(v5.0\). Zenodo.](https://doi.org/10.5281/zenodo.7467337)  
1067 <https://doi.org/10.5281/zenodo.7467337>, 2022.
- 1068 Testud, J.: Gravity waves generated during magnetic substorms, *Journal of Atmospheric and*  
1069 *Terrestrial Physics*, 32(11), pp. 1793–1805, doi: 10.1016/0021-9169(70)90137-6, 1970.
- 1070 Themens, D. R., Jayachandran, P. T., Langley, R. B., MacDougall, J. W., and Nicolls, M. J.:  
1071 Determining receiver biases in GPS-derived total electron content in the auroral oval and polar  
1072 cap region using ionosonde measurements, *GPS Solutions*, 17(3), pp. 357–369. doi:

- 1073 10.1007/s10291-012-0284-6, 2013.
- 1074 Themens, D. R., Watson, C., Žagar, N., Vasylykevych, S., Elvidge, S., McCaffrey, A., Prikryl, P.,  
 1075 Reid, B., Wood, A., and Jayachandran, P. T.: Global Propagation of Ionospheric Disturbances  
 1076 Associated With the 2022 Tonga Volcanic Eruption, *Geophysical Research Letters*, 49(7), p.  
 1077 e2022GL098158, doi: <https://doi.org/10.1029/2022GL098158>, 2022.
- 1078 Themens, D. R., Jayachandran, P. T. and Langley, R. B.: The nature of GPS differential receiver  
 1079 bias variability: An examination in the polar cap region, *Journal of Geophysical Research: Space*  
 1080 *Physics*, 120(9), pp. 8155–8175, doi: <https://doi.org/10.1002/2015JA021639>, 2015.
- 1081 Tsurutani, B. T., and Gonzalez, W. D.: 1987 The cause of high-intensity long-duration  
 1082 continuous AE activity (HILDCAAs): Interplanetary Alfvén wave trains, *Planet. Space*  
 1083 *Sci.*, 35(4), 405–412, doi:10.1016/0032-0633(87)90097-3, 1987
- 1084 Tsurutani, B. T., Gould, T., Goldstein, B. E., Gonzalez, W. D., and Sugiura, M.: Interplanetary  
 1085 Alfvén waves and auroral (substorm) activity: Imp 8, *J. Geophys. Res.*, 95(A3), 2241–2252,  
 1086 doi:10.1029/ja095ia03p02241, 1990.
- 1087 Tsurutani, B. T., Gonzalez, W. D., Gonzalez, A. L. C., Tang, F., Arballo, J. K., and Okada, M.:  
 1088 Interplanetary origin of geomagnetic activity in the declining phase of the solar cycle, *J.*  
 1089 *Geophys. Res. Space Phys.*, 100(A11), 21717–21733, doi:10.1029/95ja01476, 1995.
- 1090 Tsurutani, B. T., et al.: Corotating solar wind streams and recurrent geomagnetic activity: A  
 1091 review, *J. Geophys. Res.*, 111, A07S01, doi:[10.1029/2005JA011273](https://doi.org/10.1029/2005JA011273), 2006. Uccellini, L. W. and  
 1092 Koch, S. E.: The Synoptic Setting and Possible Energy Sources for Mesoscale Wave  
 1093 Disturbances, *Monthly Weather Review*, 115(3), pp. 721–729, doi: [https://doi.org/10.1175/1520-](https://doi.org/10.1175/1520-0493(1987)115<0721:TSSAPE>2.0.CO;2)  
 1094 [0493\(1987\)115<0721:TSSAPE>2.0.CO;2](https://doi.org/10.1175/1520-0493(1987)115<0721:TSSAPE>2.0.CO;2), 1987.
- 1095 Vadas, S. L. and Nicolls, M. J.: Using PFISR measurements and gravity wave dissipative  
 1096 theory to determine the neutral thermospheric winds, *Geophys. Res. Lett.*, 35, L02105,  
 1097 doi:[10.1029/2007GL031522](https://doi.org/10.1029/2007GL031522), 2008.
- 1098 Vadas, S. L. and Azeem, I.: Concentric secondary gravity waves in the thermosphere and  
 1099 ionosphere over the continental United States on March 25–26, 2015 from deep Convection.  
 1100 *Journal of Geophysical Research: Space Physics*, 126, e2020JA028275, [https://](https://doi.org/10.1029/2020JA028275)  
 1101 [doi.org/10.1029/2020JA028275](https://doi.org/10.1029/2020JA028275)
- 1102 Vadas, S. L., Becker, E., Bossert, K., Baumgarten, G., Hoffmann, L., & Harvey, V. L.:  
 1103 Secondary gravity waves from the stratospheric polar vortex over ALOMAR observatory on 12–  
 1104 14 January 2016: Observations and modeling. *Journal of Geophysical Research: Atmospheres*,  
 1105 128, e2022JD036985. <https://doi.org/10.1029/2022JD036985>,  
 1106 2023. <https://doi.org/10.1029/2022JD036985>, 2023.  
 1107
- 1108 Waldoock, J. A. and Jones, T. B. (1987) Source regions of medium scale travelling ionospheric  
 1109 disturbances observed at mid-latitudes, *Journal of Atmospheric and Terrestrial Physics*, 49(2),  
 1110 pp. 105–114. doi: [https://doi.org/10.1016/0021-9169\(87\)90044-4](https://doi.org/10.1016/0021-9169(87)90044-4), 2021.

Weygand, J. M., Amm, O., Viljanen, A., Angelopoulos, V., Murr, D., Engebretson, M. J., Gleisner, H., and Mann, I.: Application and validation of the spherical elementary currents systems technique for deriving ionospheric equivalent currents with the North American and Greenland ground magnetometer arrays, *J. Geophys. Res.*, **116**, A03305, <https://doi.org/10.1029/2010JA016177>, 2011.

Weygand, J.M., Amm, O., Angelopoulos, V., Milan, S.E., Grocott, A., Gleisner, H., Stolle, C.: Comparison Between SuperDARN Flow Vectors and Equivalent Ionospheric Currents from Ground Magnetometer Arrays, *J. Geophys. Res.*, **117**, A05325, doi:10.1029/2011JA017407, 2012.

Weygand, J. M., and Wing, S.: Comparison of DMSP and SECS region-1 and region-2 ionospheric current boundary, *J. Atmos. Solar Terr. Phys.*, **143**, 8-13, 2016.

Williams, P. J. S., Viridi, T. S., Lewis, R. V., Lester, M., Rodger, A. S., McCrea, I. W., and Freeman, K. S. C.: Worldwide atmospheric gravity-wave study in the European sector 1985–1990, *Journal of Atmospheric and Terrestrial Physics*, **55**(4–5), pp. 683–696, doi: 10.1016/0021-9169(93)90014-P, 1993.

Yang, Y.-H., Chao, J.-K. and Lee, L.-C.: On the Walén Relation for Alfvénic Fluctuations in Interplanetary Space, *The Astrophysical Journal*, **904**(2), p. 195, doi: 10.3847/1538-4357/abf55, 2020.

Yu, Y., Wang, W. and Hickey, M. P.: Ionospheric signatures of gravity waves produced by the 2004 Sumatra and 2011 Tohoku tsunamis: A modeling study, *Journal of Geophysical Research: Space Physics*, **122**(1), pp. 1146–1162, doi: <https://doi.org/10.1002/2016JA023116>, 2017.

Zhang, S.-R., Erickson, P. J., Goncharenko, L. P., Coster, A. J., Rideout, W., and Vierinen, J.: Ionospheric Bow Waves and Perturbations Induced by the 21 August 2017 Solar Eclipse, *Geophysical Research Letters*, **44**(24), pp. 12,12-67,73, doi: <https://doi.org/10.1002/2017GL076054>, 2017.

Zhang, S.-R., Coster, A. J., Erickson, P. J., Goncharenko, L. P., Rideout, W., & Vierinen, J.: Traveling ionospheric disturbances and ionospheric perturbations associated with solar flares in September 2017. *Journal of Geophysical Research: Space Physics*, **124**, 5894–5917, <https://doi.org/10.1029/2019JA026585>, 2019.

Formatted: Font: (Default) Times New Roman, (Asian) Times New Roman

Formatted: Font: (Default) Times New Roman, (Asian) Times New Roman

Formatted: Font: (Default) Times New Roman, (Asian) Times New Roman

Formatted: Font: (Default) Times New Roman, (Asian) Times New Roman

Formatted: Font: (Default) Times New Roman, (Asian) Times New Roman

Formatted: Font: (Default) Times New Roman, (Asian) Times New Roman

Formatted: Font: (Default) Times New Roman, (Asian) Times New Roman

Formatted: Font: (Default) Times New Roman, (Asian) Times New Roman, Not Italic

Formatted: Font: (Default) Times New Roman, (Asian) Times New Roman

Formatted: Font: (Default) Times New Roman, (Asian) Times New Roman, Not Bold

Formatted: Font: (Default) Times New Roman, (Asian) Times New Roman

Formatted: Font: (Default) Times New Roman, (Asian) Times New Roman

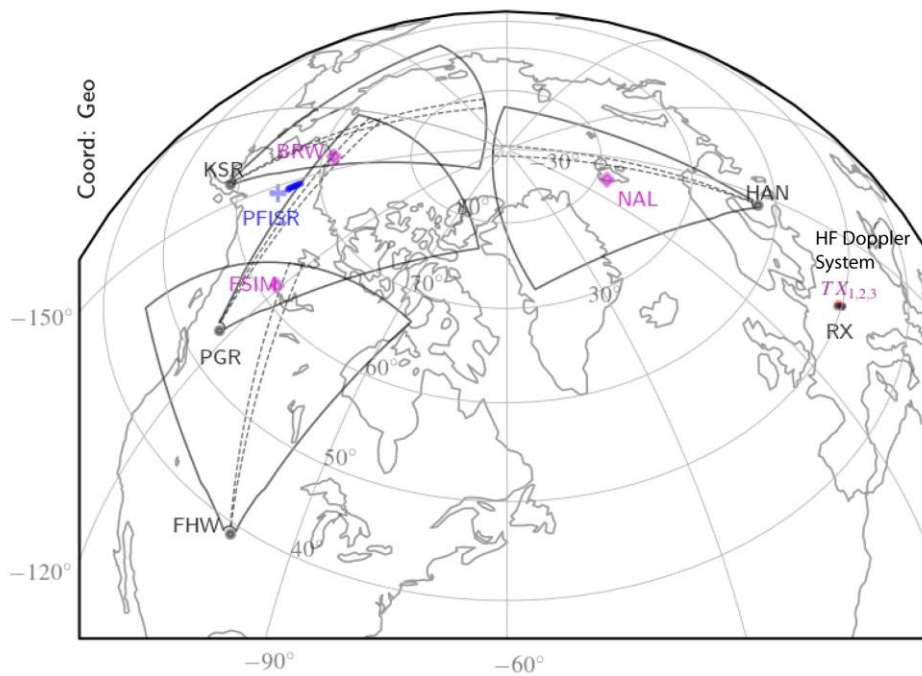
Formatted: Font: (Default) Times New Roman, (Asian) Times New Roman, Not Italic

Formatted: Font: (Default) Times New Roman, (Asian) Times New Roman

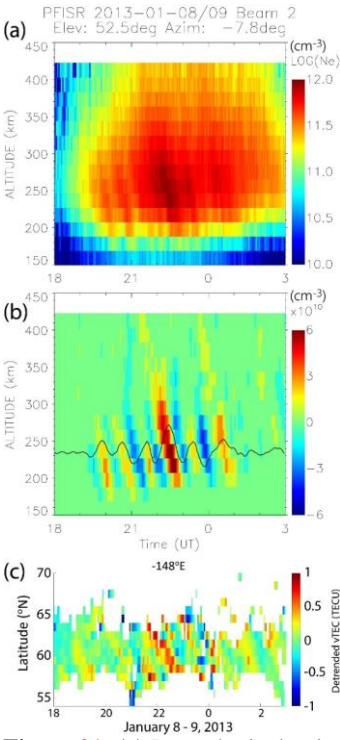
Formatted: Font: (Default) Times New Roman, (Asian) Times New Roman, Not Bold, Not Italic

Formatted: Font: (Default) Times New Roman, (Asian) Times New Roman

## Figures

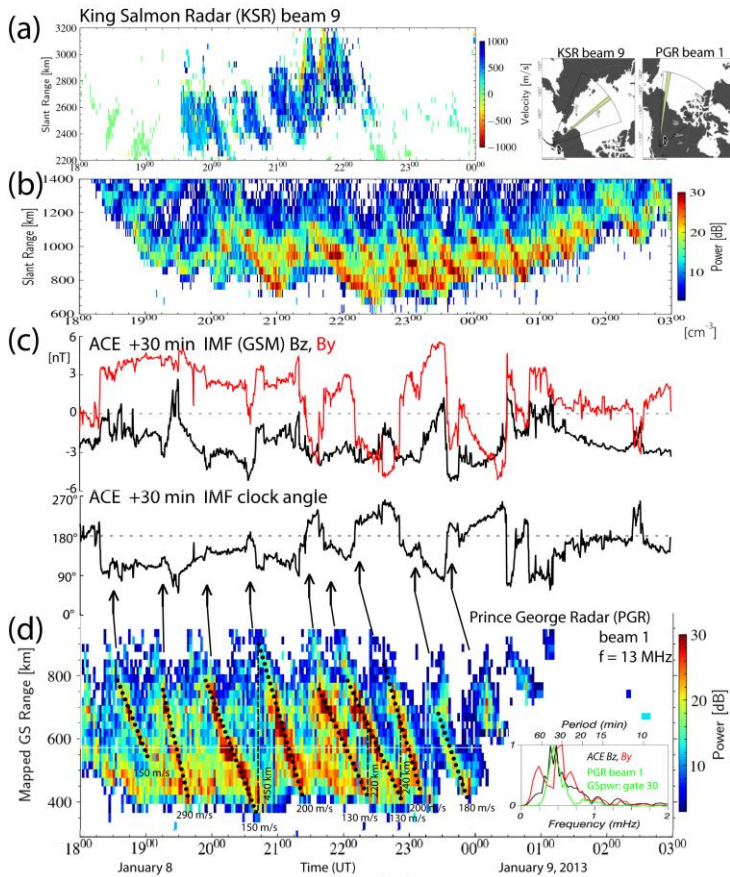


**Figure 1:** The field-of-views of SuperDARN radars in King Salmon (KSR), Prince George (PGR) Fort Hayes West (FHW) and Hankasalmi (HAN). The Poker Flats Incoherent Scatter Radar (PFISR) beam 2 range gates footprints are shown in blue color. Also, the ground magnetometers in Barrow (BRW), Fort Simpson (FSIM) and Ny Ålesund (NAL) and locations of transmitters and a receiver of the HF Doppler sounding system operating in the Czech Republic are shown.



**Figure 21:** (a) Ionospheric density observed by the PFISR radar beam 2 and (b) detrended using a 33-point wide Savitzky-Golay filter. (c) The detrended GNSS vTEC mapped at latitude bins along the longitude of PFISR.

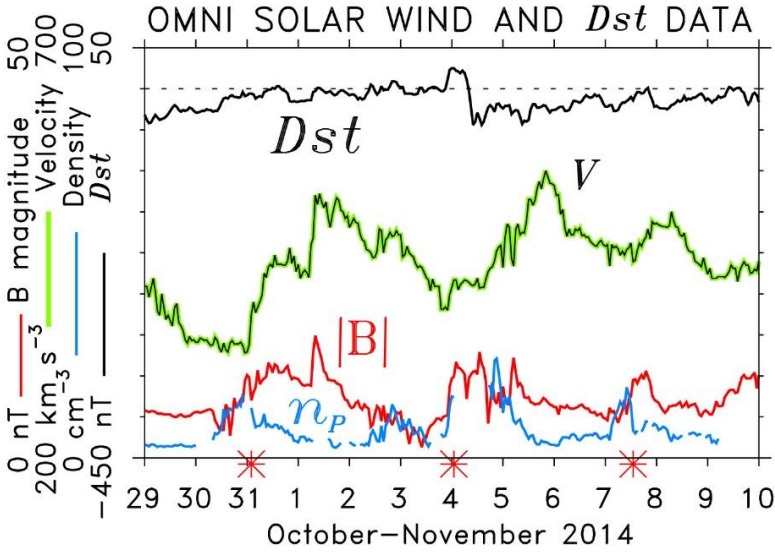
Formatted: Font: Bold, English (Canada)



**Figure 32:** (a) The line-of-sight velocities and (b) the sea scatter power as a function of the slant range observed by the KSR radar beam 9. (c) The time-shifted time series of the IMF  $B_z$ ,  $B_y$ , and the IMF clock angle observed by ACE spacecraft. (d) The mapped ground scatter power observed by the PGR radar beam 1. The arrows indicate southward turning of the IMF. Normalized FFT spectra of the detrended IMF  $B_z$ ,  $B_y$ , and the Prince George radar ground scatter power (beam 1, gate 30, mapped GS range 730 km) are shown in the inset. The estimated TIDs wavelengths and phase velocities are shown.

Formatted: Font: Bold, English (Canada)

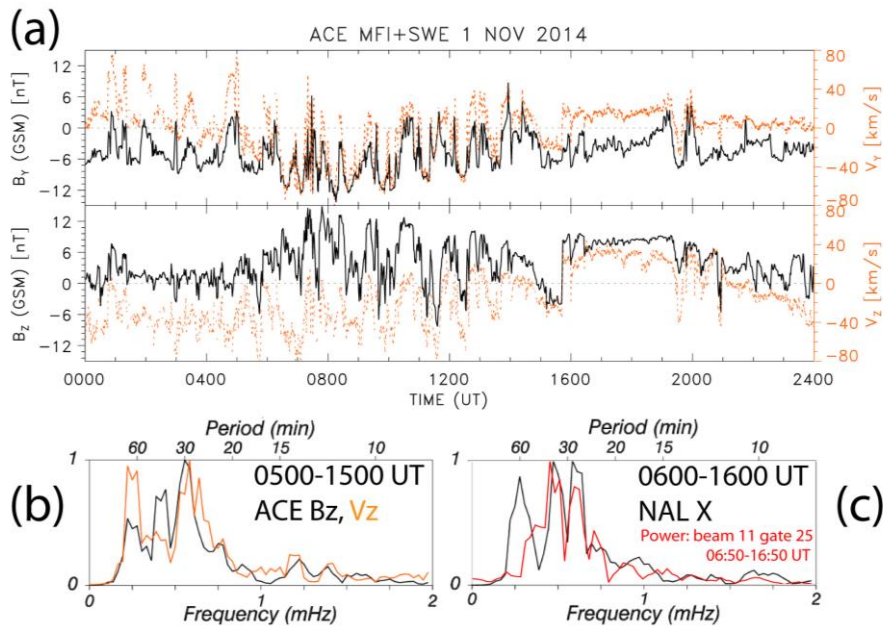
1172



1173  
1174  
1175  
1176  
1177  
1178  
1179

**Figure 43:** The OMNI solar wind velocity *V*, magnetic field magnitude *|B|*, and proton density *n<sub>P</sub>* showing three HSS/CIRs on October 31, November 4 and 7 are marked by red asterisks at the time axis. The ring current *Dst* index is also shown.

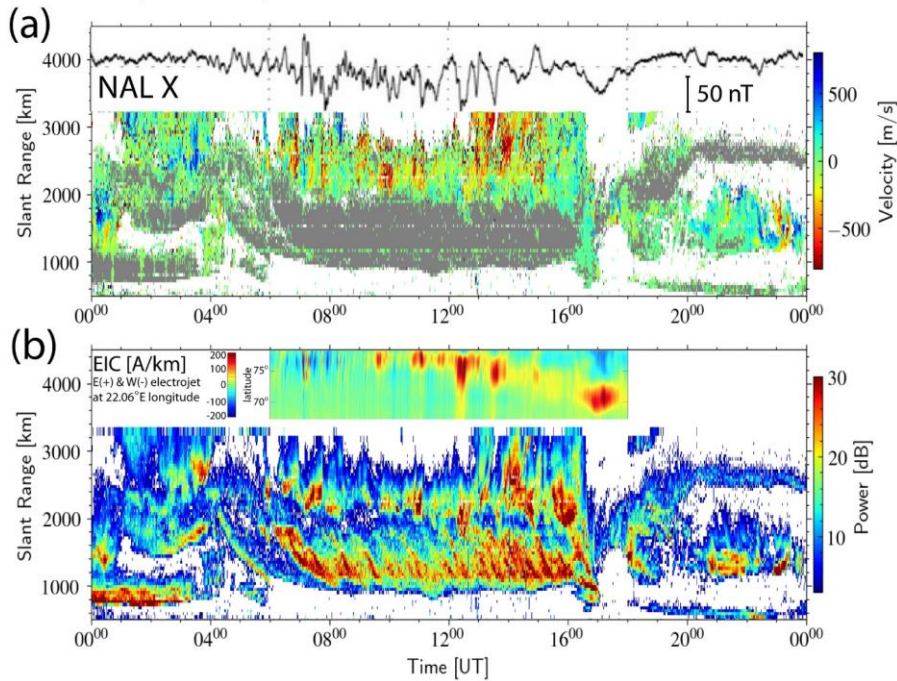
**Formatted:** Font: Bold, English (Canada)



**Figure 54:** (a) The components of the magnetic field and solar wind velocity observed by ACE, (b) the FFT spectra of the detrended time series of IMF  $B_Z$  and solar velocity  $V_Z$ , and (c) the FFT spectra of the time series of the X-component of ground magnetic field perturbations in Ny Ålesund (NAL) and the Hankasalmi radar ground scatter power (beam 11, gate 25, slant range 1305 km).

Formatted: Font: Bold, English (Canada)

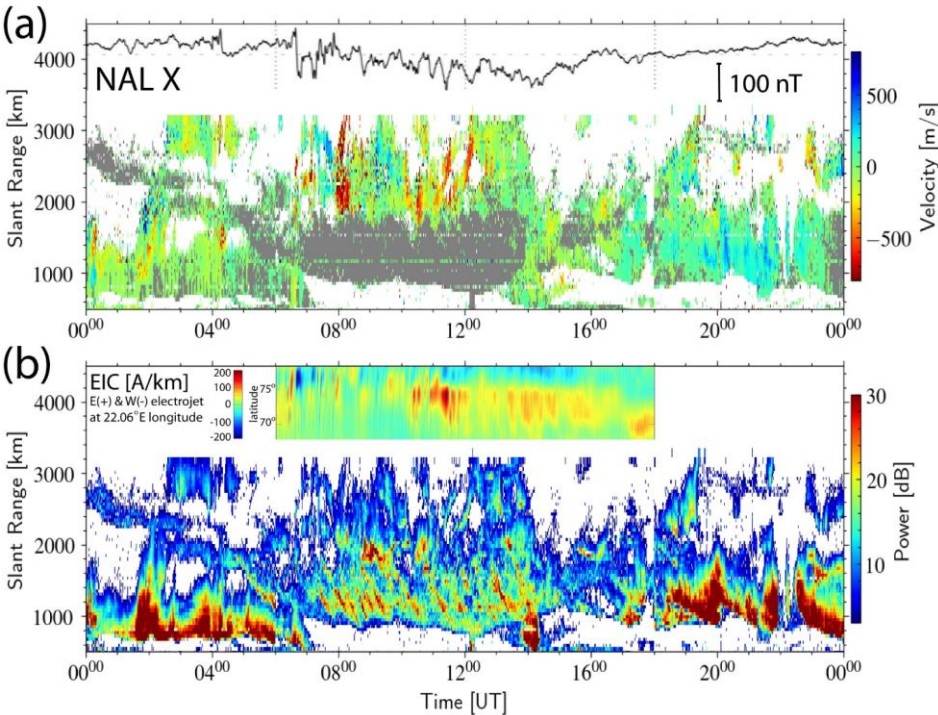
Rad: han / Beam: 11 / Date: 01 Nov, 2014



**Figure 65:** (a) The line-of-sight (LoS) velocity and (b) the radar scatter power (ground scatter power shown in grey color in the velocity plot) observed by the Hankasalmi radar beam 11 on November 1, 2014. The X-component of the ground magnetic field perturbations in Ny Ålesund (NAL) is superposed representing the fluctuations of ionospheric currents modulated by solar wind Alfvén waves. 1D equivalent currents estimates that use all IMAGE magnetometers are also superposed.

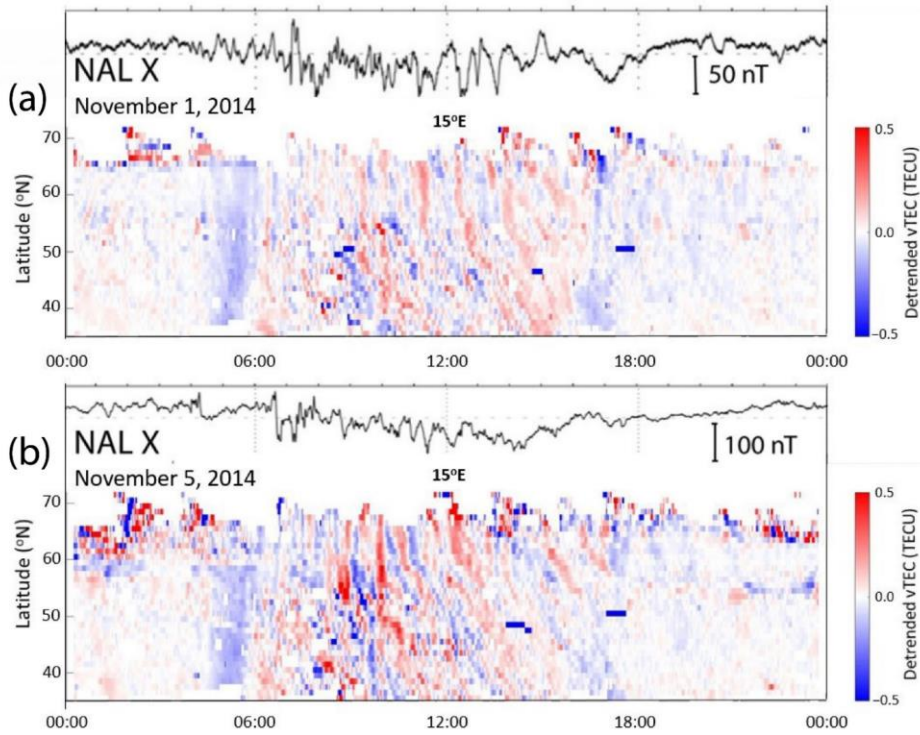
Formatted: Font: Bold

Rad: han / Beam: 11 / Date: 05 Nov, 2014

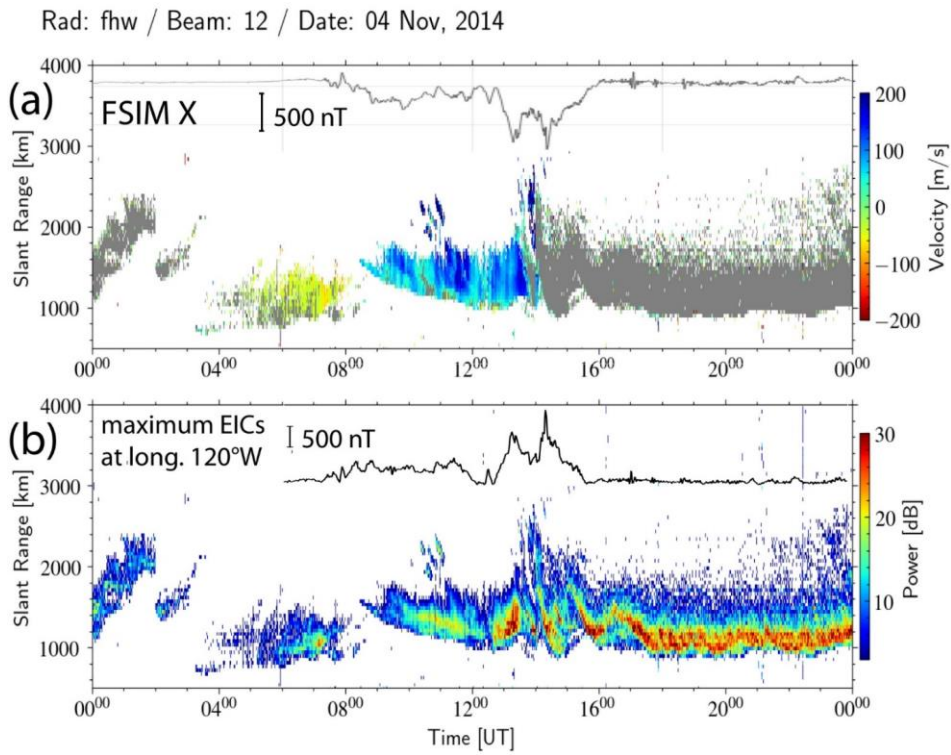


**Figure 76:** The same as Fig. 65 but for November 5, 2014.

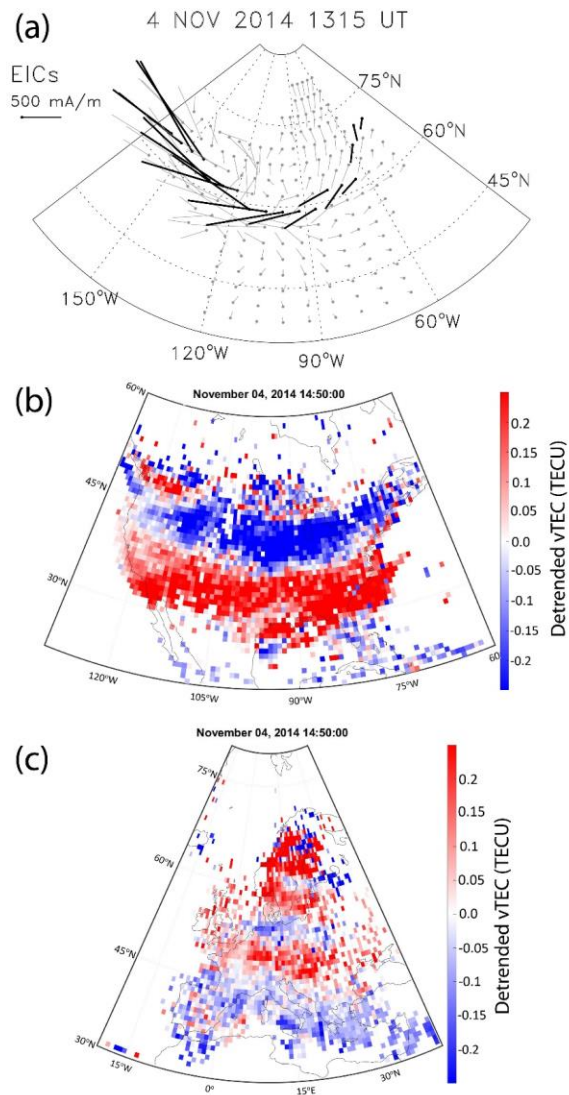
**Formatted:** Font: Bold



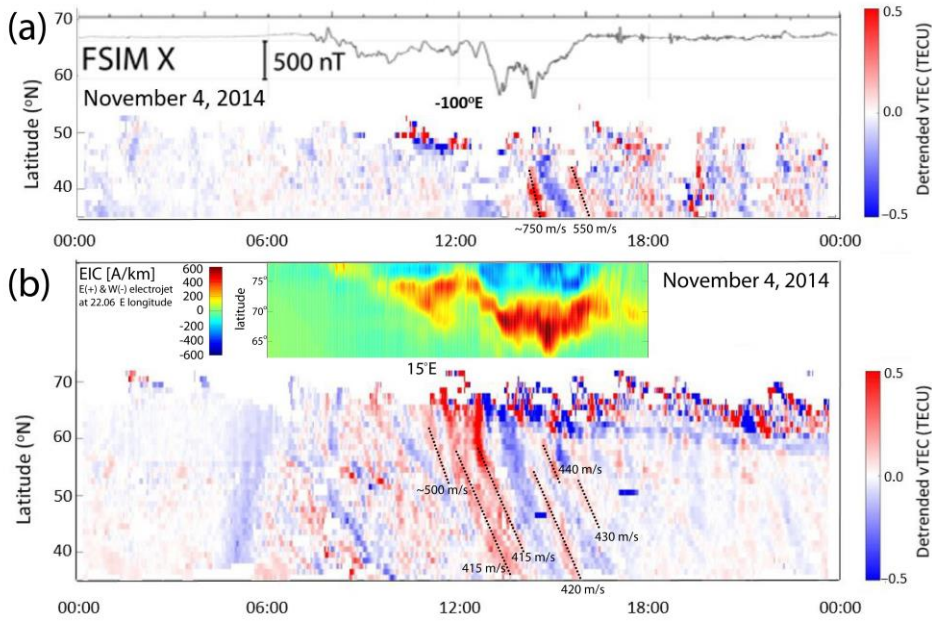
**Figure 78:** The detrended vTEC mapped along longitude of 15°E on (a) November 1 and (b) November 5, 2014. The X-component of the ground magnetic field perturbations in Ny Ålesund (NAL) is superposed.



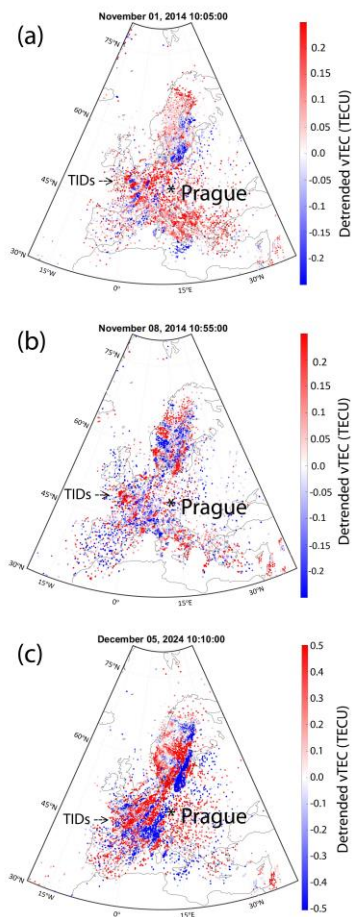
**Figure 89:** (a) The line-of-sight (LoS) velocity and (b) the radar scatter power (ground scatter power shown in grey color in the velocity plot) observed by the Fort Hays West radar beam 12 on November 4, 2014. The X-component of the ground magnetic field perturbations in Fort Simpson (FSIM) and the maximum EICs at longitude 120°W are superposed.



**Figure-910:** (a) The intensification of the westward electrojet over North America, and LSTIDs in the detrended vTEC maps over (b) North America and (c) Europe.

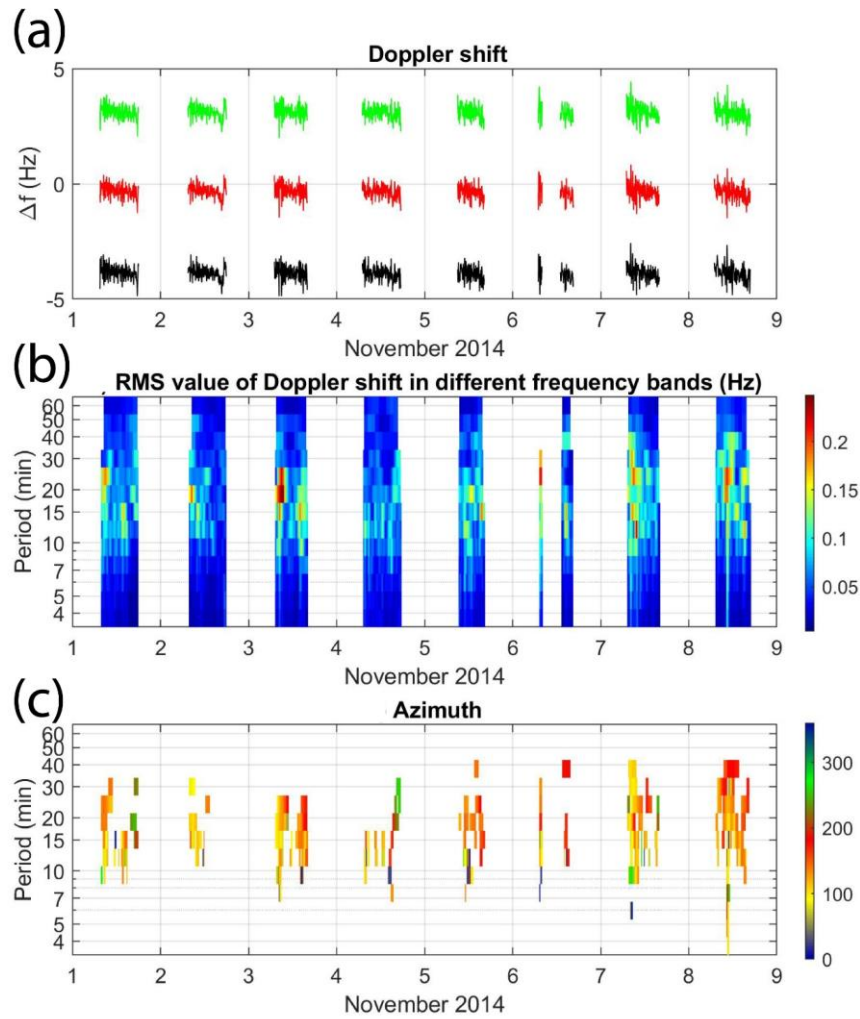


**Figure 1011:** The detrended vTEC mapped along longitude of (a) 100°W and (b) 15°E on November 4, 2014. The X-component of the ground magnetic field in Fort Simpson (FSIM) and 1D equivalent currents estimates over Scandinavia are superposed.

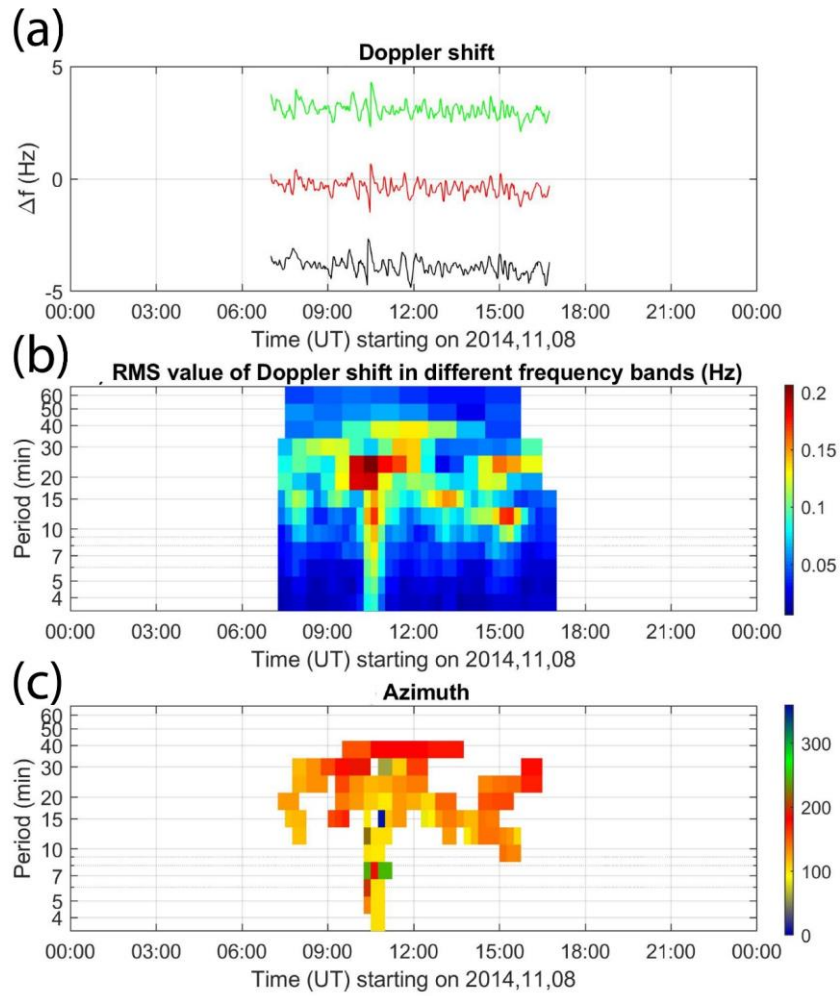


**Figure 11.12:** The detrended vTEC maps on (a) November 1, and (b) November 8, 2014, and (c) December 5, 2024.

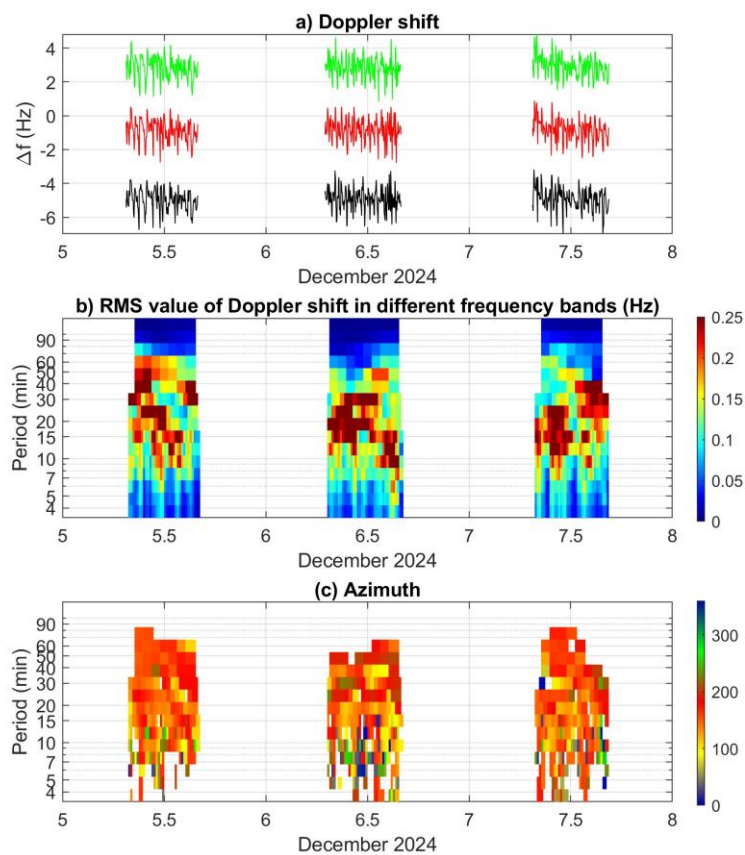
**Formatted:** Font: Bold



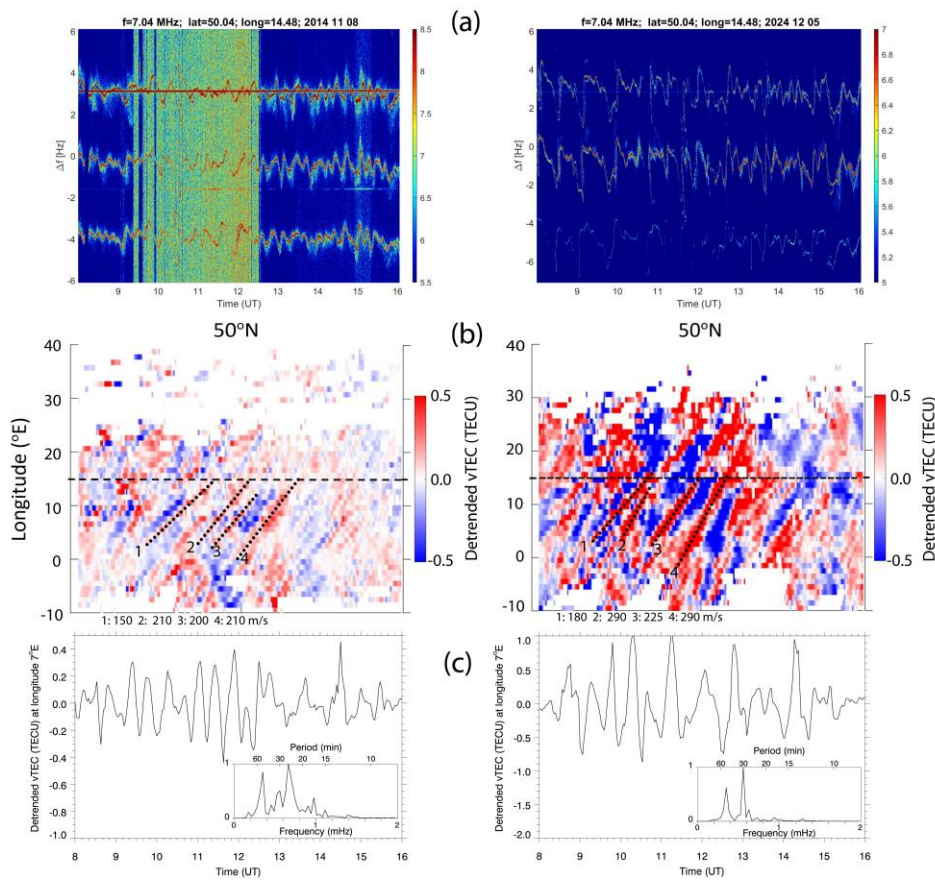
**Figure 4.13:** (a) Doppler shift frequencies of spectral density maxima for individual transmitter-receiver pairs (including artificial offsets) from X to Y. (b) Dynamic spectra (periodograms) of Doppler shift signals and (c) the propagation azimuth of waves, displayed as function of period and time for November 1-8, 2014.



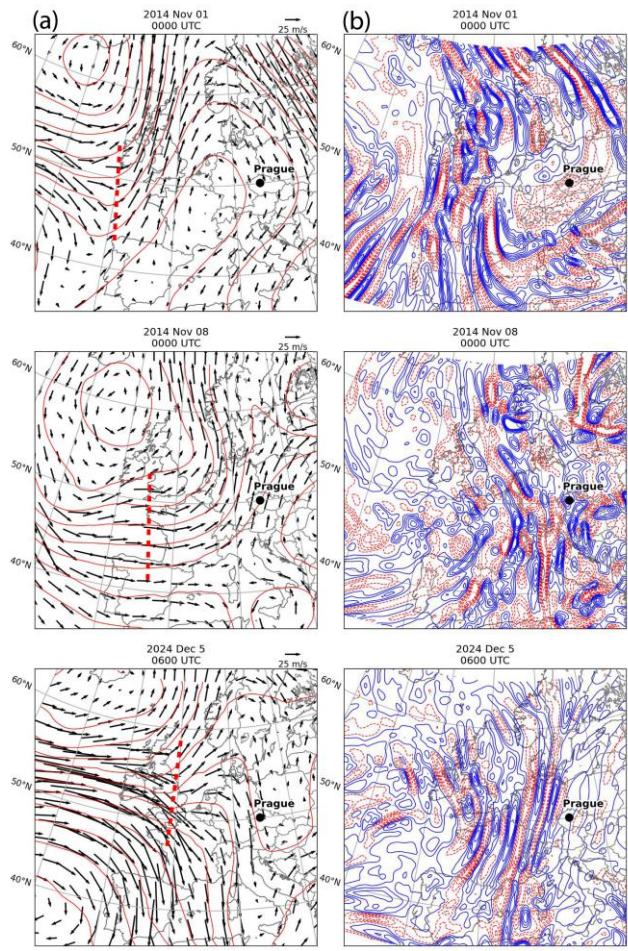
**Figure 1214:** The same as Fig. 142 but expanded for November 8, 2014.



**Figure 15:** (a) Doppler shift frequencies of spectral density maxima for individual transmitter-receiver pairs (including artificial offsets) from X to Y. (b) Dynamic spectra (periodograms) of Doppler shift signals and (c) the propagation azimuth of waves, displayed as function of period and time for December 5-7, 2024.



**Figure 164:** (a) The Doppler shift spectrogram recorded at frequency 7.04 MHz on November 8 and 8, 2014, and December 5, 2024. (b) The detrended vTEC mapped along latitude of 50°N. The dashed line shows the longitude of Prague. The approximate eastward velocities of TIDs shown in dotted lines are estimated. (c) The detrended vTEC time series at longitude of 7°E and the normalized FFT spectra.



**Figure 17:** (a) The ERA5 geopotential height (red contours at intervals of 100 m), horizontal winds (m/s) at 300-hPa level, with a probable source region of gravity waves indicated by red dashed line. (b) The ERA5 divergence (positive in solid blue line) of the horizontal wind at 150-hPa level, on November 1, ~~and~~ November 8, 2014, and December 5, 2024.

**Formatted: Font: Bold**