

# Revisiting Mirror Modes in the Plasma Environment of Comet 67P/Churyumov-Gerasimenko

Ariel Tello Fallau<sup>1,2,\*</sup>, Charlotte Goetz<sup>3,4,\*</sup>, Cyril Simon Wedlund<sup>5</sup>, Martin Volwerk<sup>5</sup>, and Anja Moeslinger<sup>6</sup>

<sup>1</sup>Department of Physics, University of Chile, Beauchef 850, Santiago, Chile

<sup>2</sup>Department of Mechanical Engineering, University of Chile, Beauchef 851, Santiago, Chile

<sup>3</sup>Department of Mathematics, Physics and Electrical Engineering, Northumbria University, Newcastle-upon-Tyne, United Kingdom

<sup>4</sup>ESTEC, European Space Agency, Keplerlaan 1, 2201AZ Noordwijk, The Netherlands

<sup>5</sup>Space Research Institute, Austrian Academy of Sciences, Schmiedlstraße 6, 8042 Graz, Austria

<sup>6</sup>Swedish Institute of Space Physics, 981 28 Kiruna, Sweden

\*These authors contributed equally to this work.

**Correspondence:** ariel.tello@ing.uchile.cl

**Abstract.** The plasma environment of comet 67P provides a unique laboratory to study plasma phenomena in the interplanetary medium. There, waves are generated which help the plasma relax back to stability through wave-particle interactions, transferring energy from the wave to the particles and vice-versa. In this study, we focus on mirror mode-mode-like structures (low-frequency, transverse, compressional and quasi-linearly polarised waves). They are present virtually everywhere in the solar system as long as there is a large temperature anisotropy and a high plasma beta. Previous studies have reported the existence of mirror modes at 67P but no further systematic investigation has so far been done. This study aims to characterise the occurrence of mirror modes in this environment and identify possible generation mechanisms through well-studied previous methods. Specifically, we make use of the magnetic field-only method, implementing a  $B-n$  anti-correlation and a new peak/dip identification method. We investigate the magnetic field measured by Rosetta from November 2014 to February 2016 and find 565 mirror mode signatures. Mirror modes were mostly found as single events, with only one mirror mode-like train in our dataset. Also, the occurrence rate was compared with respect to the gas production rates, cometocentric distance and magnetic field strength leading to a non-conclusive relation between these quantities. The lack of mirror mode wave trains may mean that mirror modes somehow diffuse and/or are overshadowed by the large-scale turbulence in the inner coma. The detected mirror modes are likely highly evolved as they were probably generated upstream of the observation point and have traversed a highly complex and turbulent plasma to reach their detection point. The plasma environment of comets behaves differently compared to planets and other objects in the solar system. Thus, knowing how mirror modes behave at comets could lead us to a more unified model for mirror modes in space plasmas.

## 1 Introduction

ESA's Rosetta mission was the first to rendezvous with a comet, the first to deploy a lander to a comet's surface (Taylor et al., 2017), and the first to follow a comet in its orbit around the Sun. By studying the dust and gas from and the structure of the nucleus and organic materials associated with the comet, via both remote and in situ observations, the Rosetta mission helped unlock the history and evolution of our solar system. It also provided observations of the solar wind plasma interacting with the cometary plasma. Within this plasma environment, we are given the unique opportunity to study an induced magnetosphere at a small solar system object and explore how plasmas of different composition, momentum and energy interact (Goetz et al., 2022).

One of the processes of interest in any plasma environment is the formation and propagation of waves. Different types of waves and wave-like structures can be found in a cometary plasma environment (Ip, 2004; Goetz et al., 2022) (Wu and Davidson, 1972; Goetz et al., 2022), e.g. magnetosonic waves, ~~Alfvén waves~~ (Tsurutani and Smith, 1986; Tsurutani et al., 1987; Ostaszewski et al., 2020), lower hybrid waves (André et al., 2017; Madsen et al., 2018), singing comet waves (Richter et al., 2015; Goetz et al., 2021b), ion acoustic waves (Gunell et al., 2017; Madsen et al., 2018) and ion cyclotron waves (Gary, 1992; Glassmeier and Neubauer, 1993). Here, we focus on mirror modes, which have previously been found at comets 67P/Churyumov-Gerasimenko (67P, Volwerk et al., 2016a) and 1P/Halley (Mazelle et al., 1991; Schmid et al., 2014).

Mirror modes are low-frequency, long-wavelength, transverse, compressional and quasi-linearly polarised wave-like structures, which are non-propagating in the plasma rest frame.

They are ~~present virtually everywhere in the solar system (often present in~~ planetary and cometary magnetosheaths ~~, solar wind as magnetic holes, etc.)~~ as long as there is a temperature or pressure anisotropy (see Gary et al., 1993; Tsurutani et al., 2014) (see Hasegawa, 1969; Tsurutani et al., 1982). Specifically, they contribute to the reduction of the temperature anisotropy by reducing the perpendicular temperature and redistributing energy in the plasma, hence making the magnetosheath globally stable to the generation of local temperature-driven instabilities. Their occurrence can therefore also be used to infer plasma temperature anisotropies in their generation region.

In spacecraft observations, they usually appear as trains of magnetic field dips or peaks (or both) which are signatures of magnetic bottles trapping high-density pockets of plasma, with the magnetic field magnitude  $|B|$  and the plasma density  $n$  in antiphase, lasting from few seconds to a few tens of seconds. Although they are non-propagating in the plasma rest frame, they can drift with the ambient plasma they are embedded in; hence the plasma parameters in the region the mirror modes are generated in may differ from the region they are detected at. The instability at their origin arises from a temperature anisotropy and preferential heating of the plasma along the perpendicular direction to the magnetic field. The drift mirror mode instability criterion (MMI) can be written as follows (Hasegawa, 1969):

$$\text{MMI} = 1 + \sum_i \beta_{i\perp} \left( 1 - \frac{T_{i\perp}}{T_{i\parallel}} \right) < 0, \quad (1)$$

where the sum is on all the species (ions and electrons) present in the plasma. The notations  $\perp$  and  $\parallel$  indicate the directions perpendicular and parallel to the background magnetic field.  $T_{i\parallel}$  and  $T_{i\perp}$  represent the species' parallel and perpendicular tempera-

tures, these temperatures define the parallel and perpendicular plasma beta as  $\beta_{i\parallel} = 2\mu_0 N_i k_B T_{i\parallel} / |B|^2$  and  $\beta_{i\perp} = 2\mu_0 N_i k_B T_{i\perp} / |B|^2$  respectively.

Mirror modes and ~~Alfvén (left-hand polarised)~~ circularly polarised ion cyclotron waves, both excited for large temperature anisotropies ( $T_{\perp} > T_{\parallel}$ ), are co-generated in the plasma. Mirror modes are found in weakly magnetised plasmas (high plasma beta  $\beta \gg 1$ ), whereas ~~Alfvén~~ ion cyclotron waves are found in low plasma  $\beta$  conditions (~~Gary, 1992~~) (Gary, 1992; Remya et al., 2013, 2014). Moreover, ~~a minute addition of heavier, large-anisotropy ions~~ (theoretical models indicate that the presence of He<sup>2+</sup> and O<sup>+</sup> etc.) to the solar wind ions in the plasma) has the effect in the wave dispersion relation of dampening the ~~Alfvén ion cyclotron ion cyclotron anisotropy~~ mode in favour of the mirror mode (Price et al., 1986), an effect that is expected to routinely occur in the cometary coma, where heavy ions are slowly incorporated into the plasma flow through solar wind mass loading and charge exchange (~~Szegö et al., 2000; Simon Wedlund et al., 2019~~) (Simon Wedlund et al., 2019; Szegö et al., 2000).

At comets and planets with an extended exosphere like Mars and Venus, the build-up of a temperature anisotropy is expected to occur in various ways and locations (see Simon Wedlund et al., 2022, and references therein): everywhere around the object (in the upstream solar wind or in the magnetosheath) through pick-up ion effects (Wu and Davidson, 1972), in the wake of the quasi-perpendicular shock (as at Earth and for any sufficiently developed bow shock), or close to the induced magnetospheric boundary/magnetic pile-up boundary (IMB/MPB) by field-line draping (Midgley and Davis, 1963) and conservation of the first adiabatic invariant (if  $|B|$  slowly increases due to compression of the field lines at the boundary, the conservation of the magnetic moment  $\mu = mv_{\perp}^2 / 2|B|$  implies an increase of the perpendicular energy and thus temperature).

Since the first in-situ encounters with comets such as that of the ESA/Giotto spacecraft with 1P/Halley, mirror mode-like structures have been detected in their magnetosheath, especially close to their MPB (Mazelle et al., 1989; Mazelle et al., 1991; Glassmeier et al., 1993; Schmid et al., 2014; Volwerk et al., 2016a, and references therein). In particular, Glassmeier et al. (1993) found, in the upstream part of the IMB, compressive, linearly polarised waves consistent with mirror modes ( $|B|$  and electron density  $n_e$  in antiphase) whereas the downstream part of the IMB contained fast-mode type magnetosonic waves. After revisiting the 1P/Halley datasets, Schmid et al. (2014) calculated the size of mirror mode structures to be of the order of 1–2 H<sub>2</sub>O<sup>+</sup> gyroradii, suggesting that the main mechanism at the origin of the anisotropy thus generating mirror modes was pick-up ion effects, rather than originating from the wake of the weak cometary shock.

At 67P, mirror mode structures were originally detected on a couple of days in 2015 (Volwerk et al., 2016a). Two different kinds of mirror mode-like structures were observed on 6 and 7 June 2015: one of small size generated by locally ionized water and one of large size generated by ionization and pick-up farther away from the comet.

The observed variations in the solar wind parameters, such as directional changes and increase in dynamic pressure, in both solar wind propagation models used by Volwerk et al. (2016a), led to several interesting phenomena such as current densities in the current sheet of tens of  $\mu\text{A m}^{-2}$  or several  $\text{nA m}^{-2}$  (depending on the assumption of how fast Rosetta crosses this structure), evidence in the pile-up region for mirror mode-like structures generated by the newly created ions (with a size between one and three water-ion gyroradii as in Schmid et al., 2014, for 1P/Halley), and clear signatures of mirror mode-like structures outside the pile-up region (with a much larger size of 10 to 16 water-ion gyroradii).

85 As the plasma density data resolution is too low to check the pressure balance of the mirror mode structures, the magnetic-field-only method described in Lucek et al. (1999) was used by Volwerk et al. (2016a) to investigate the presence in the data of mirror modes. They used a Minimum Variance Analysis (MVA) of the RPC-MAG data over a sliding window to obtain the angles of the minimum and maximum variance directions with respect to a low-pass filtered (no longer than 10 min) background magnetic field. In order to identify mirror modes, the structures had to fulfil the following criteria:  $\theta \geq 80$ ,  
90  $\phi \leq 20$  and  $\Delta B/B \geq 0.5$  (these quantities are also used in our current study and are specified in the method section). However, structures such as foreshock waves or fast-mode waves linked to pick-up ions are compressional in nature and may also fulfil these criteria. In those cases, plasma measurements are necessary to lift the ambiguity; specifically, by checking for an anti-correlation between the plasma density and the magnetic field magnitude that is expected for mirror-mode structures ~~(Hasegawa, 1969)~~[\(see Hasegawa, 1969; Tsurutani et al., 1982; Price et al., 1986\).](#)

95 Linear magnetic holes have been suggested to have an association with mirror modes because the plasma in and close to the magnetic hole is often only marginally stable with respect to the mirror mode instability (Winterhalter et al., 1995; Neugebauer et al., 2001; Stevens and Kasper, 2007). [Magnetic holes \(MHs\) or magnetic depressions are plasma structures that share a compressional and pressure balanced nature with mirror modes. Therefore they are often thought to be related to mirror mode unstable plasmas, although other theories on the generation of MHs exist. For example Tsurutani et al. \(2011\) summarize that magnetic decreases can form at the steepened edges of Alfvén waves, within Corotating Interaction Regions or through wave-wave interactions. While the generation mechanism may be different, observationally, it is difficult to distinguish magnetic holes from solitary mirror mode structures.](#) The fact that the magnetic holes are isolated structures, and not part of a periodic chain of structures as one would expect from mirror modes, ~~would~~[could](#) suggest that linear magnetic holes are remnants of mirror modes; these linear magnetic holes are possibly the result of coalescing mirror mode structures (Winterhalter  
100 [et al., 1995; Zhang et al., 2009\)](#) and possibly propagating as soliton structures through a medium that is mirror mode stable (Baumgärtel, 1999; Sperveslage et al., 2000).

In parallel with mirror mode detections, magnetic holes in the modified solar wind at comet 67P were detected in the spring of 2015 when, for the first time, they were found in a cometary environment even when solar wind protons are almost absent (Plaschke et al., 2018). This shows that solar wind structures can convect deep into the plasma environment with only marginal  
110 modification, even when solar wind ions have been deflected and substituted with accelerated cometary ions.

The main objective of this study is to investigate when and where mirror modes can be found near the comet and how their occurrence and morphology depend on the plasma parameters. This should allow to infer how the mirror modes are generated and how this generation mechanism compares to other comets and planets.

In the following, we first describe the method used to identify mirror modes in the plasma at 67P. Then, we present two case  
115 studies of mirror modes and a statistical study of their occurrence and properties. We end with a discussion of the results and a brief conclusion.

## 2 Methods

### 2.1 Instrumentation

In this study, we use the observations by the Rosetta Plasma Consortium (RPC), specifically three subunits: the magnetometer (RPC-MAG, Glassmeier et al., 2007a), the Langmuir Probe (RPC-LAP, Eriksson et al., 2007), and the Mutual Impedance Probe (RPC-MIP, Trotignon et al., 2007). As all of the instruments have different capabilities and limitations, we will discuss them briefly in the following.

The RPC-MAG magnetometer consists of two fluxgate sensors, which are mounted on a boom and can measure the magnetic field components at a frequency of up to 20 vectors per second. As we are interested in structures of time scales of a few seconds to several tens of seconds, we downsample the magnetic field data to 1 Hz<sup>1</sup> to optimise data volume. This also has the advantage of eliminating the influence of the spacecraft reaction wheels, which introduce a signature that is only found above those frequencies (Glassmeier et al., 2007b). The major caveat when using RPC-MAG data is the offset uncertainty. Even after extensive calibration efforts a systematic offset of about  $\pm 3$  nT remains per component. Low field values and especially the angles calculated from those values should therefore be treated very carefully and ideally eliminated from the study. Due to this constraint and the availability of plasma density data, we only use data from November 2014 to February 2016 for this study.

The plasma density was measured by the Langmuir Probe (LAP, Eriksson et al., 2007) and by the Mutual Impedance Probe (MIP, Trotignon et al., 2007). The LAP instrument utilises a pair of spherical Langmuir probes for measurements of basic plasma parameters such as ion and electron currents, which depending on instrument mode can be converted into density, spacecraft potential, electric field and others. MIP can provide electron densities and temperatures from mutual impedance spectra. For our study, we use two different estimates of the density: the sweep-derived densities and the density derived from the probe current. The first is only available at a time resolution of minutes, which is useful for context, but not enough to resolve the details of the mirror mode structures. For the second, the dataset is derived from LAP currents in combination with MIP density measurements. This combination is the only way to produce accurate, reliable and high time resolution data for the plasma density (Breuillard et al., 2019). Some of these cross-calibrated data values are negative, which is due to the instrument's calibration threshold. These intervals are omitted from the analysis. In order to compare to the magnetic field, the density values are interpolated to the same time stamps as the magnetic field data.

The neutral gas density was measured by the Rosetta Orbiter Spectrometer for Ion and Neutral Analysis ROSINA-COPS (Balsiger et al., 2007). ROSINA consists of two mass spectrometers for neutrals and primary ions with complementary capabilities and a pressure sensor. The neutral gas density is derived from the pressure sensor measurements. To derive an estimate of the local gas production rate, we use a neutral outgassing velocity of 1 kms<sup>-1</sup>, a simple spherically symmetric model Haser (1957) and the measured neutral gas density.

---

<sup>1</sup><https://archives.esac.esa.int/psa/#!/Table%20View/RPC=instrument, Dataset Identifier Version V9.0>

The spacecraft and comet ephemerides were derived using freely available SPICE kernels<sup>2</sup>. If not stated otherwise, all coordinates are given in the CSEQ system, where the comet is at the origin, the  $x$ -axis points towards the Sun and the  $z$ -axis is parallel to the Sun’s North pole direction. The  $y$ -axis completes the right-handed coordinate system.

## 2.2 Selection method

Ideally, the entire Rosetta dataset at the comet should be used to search for mirror modes; however, due to data availability and calibration issues, we are constrained to only using the period from November 2014 to February 2016. This still gives quite good coverage, only very low activity cannot be investigated. To find signatures of mirror modes in the RPC data, we proceed in two-multiple steps. First, we adapt and use the magnetic field-only detection method described in Volwerk et al. (2016a) and further refined in Simon Wedlund et al. (2022) and Simon Wedlund et al. (2023) for Mars datasets to identify mirror mode candidates in the data. Second, we refine our initial event selection by searching for an anti-correlation between magnetic field and density measurements as also done in Simon Wedlund et al. (2022). Then, for the anti-correlated events, we ensure a wave-like behaviour by only retaining events that exhibit a clear minimum or maximum in the magnetic field strength and plasma density data. Unfortunately, no temperature data is available, so we could not verify that any events are indeed associated with a temperature anisotropy or a high plasma beta. For repeatability, we describe the multiple steps of the method in detail below.

### Magnetic field-only method:

First, as our structures are of the order of a couple of minutes, we calculate a 10-minute moving mean of the magnetic field to estimate the background field vector  $\mathbf{B}_{bg}$ . Second, we perform a minimum variance analysis (MVA) on the magnetic field vector to determine the direction of minimum and maximum variance (Sonnerup and Scheible, 1998). This is done for a 30s moving window for each second of data, as in Volwerk et al. (2016a). Then, the angles between the minimum and maximum variance directions ( $\mathbf{b}_{min}$  and  $\mathbf{b}_{max}$ ) with respect to that of the background magnetic field vector ( $\mathbf{B}_{bg}$ ) are calculated. Following Simon Wedlund et al. (2022) and Simon Wedlund et al. (2023),  $\theta$  denotes the angle  $\angle(\mathbf{b}_{min}, \mathbf{B}_{bg})$  and  $\phi$  denotes the angle  $\angle(\mathbf{b}_{max}, \mathbf{B}_{bg})$ . Mirror modes are compressional and linearly polarised, therefore we require that  $\theta$  be small, while  $\phi$  should be large. The exact values of the thresholds and references on which they are based can be found in Table 1. Furthermore, as in Simon Wedlund et al. (2022), we use the maximum, intermediate and minimum eigenvalues to calculate the eigenvalue ratios  $\lambda_{max}/\lambda_{int}$  and  $\lambda_{int}/\lambda_{min}$  to ensure that the wave-like modes are quasi-linearly polarised, that the maximum variance direction (the tangential component of the eigenvector triad) is well defined, and that the quasi-degeneracy of the covariance matrix is kept to the two minimum eigenvalues (Criteria 3 and 4 of Table 1).

Mirror modes are highly compressive, therefore we also require that the magnetic field variations  $\Delta B$  (defined at eqEq. 2) are large (Criterion 1 in Table 1). We define:

$$\Delta B/B = |(B - B_{bg})/B_{bg}|. \quad (2)$$

Here,  $B$  is the magnetic field magnitude and  $B_{bg}$  is the background magnetic field magnitude.

<sup>2</sup><https://www.cosmos.esa.int/web/spice/spice-for-rosetta>

| # | Criterion                             | Value       | Reason                                   | Example reference(s)                                |
|---|---------------------------------------|-------------|--|---|
| 1 | $\Delta B/B$                          | $\geq 0.5$  | Compressional structure                  | Génot et al. (2009a); Volwerk et al. (2016b)        |
| 2 | $\phi_{\max V}$                       | $\leq 20$   | Compressional structure                  | Génot et al. (2009b); Volwerk et al. (2016b)        |
|   | $\theta_{\min V}$                     | $\geq 70$   | Perpendicular wave propagation direction | Volwerk et al. (2016b); Simon Wedlund et al. (2022) |
| 3 | $\lambda_{\max}/\lambda_{\text{int}}$ | $\geq 3$    | Quasi-linearly polarised wave            | Génot et al. (2001); Soucek et al. (2008)           |
| 4 | $\lambda_{\text{int}}/\lambda_{\min}$ | $\leq 6$    | Quasi-linearly polarised wave            | Génot et al. (2001); Soucek et al. (2008)           |
| 5 | $B-n$ anti-correlation                | $\leq -0.7$ | Pressure equilibrium structures          | Volwerk (2016); Simon Wedlund et al. (2022)         |

**Table 1.** Mirror mode selection criteria ensuring that the detected structures are compressional, linearly polarised, and have their magnetic field in antiphase with plasma density measurements.

The magnetic field-only method returns values of  $\phi$ ,  $\theta$ ,  $\lambda_{\max}$ ,  $\lambda_{\min}$  and the maximum  $\Delta B/B$  of the interval for each second  
180 of the day. Then, we apply all selection criteria shown in Table 1 for each second of data. If the criteria are satisfied and if a mirror mode candidate has a time difference equal to or lower than 15 s with the next event, then both events are combined and considered one event (as in Volwerk et al., 2016b).

After this selection, we obtain a list of 32026 mirror mode candidates throughout the mission between November 1st 2014 and February 29th 2016. ~~A closer inspection reveals that many of the mirror mode candidates found by the magnetic field  
185 only method are compressional magnetic field structures, also known as steepened waves (Ostaszewski et al., 2020). This is expected because compressional structures also have a large  $\Delta B/B$  and may satisfy the angle criteria as well. However, it is clear that they are not mirror modes and lack the characteristic  $B-n$  antiphase behaviour expected for mirror modes; therefore the method needs to be expanded to eliminate those false positive detections.~~

~~We wanted to~~ At this stage, we attempted to validate the magnetic field-only method ~~through using~~ the events found by  
190 Volwerk et al. (2016a) on 6 and 7 June 2015. In this study, there are 2 relevant time intervals, 6 June (19:10-19:12 and 22:31-22:33) and the beginning of 7 June (01:10-03:40). ~~We only found~~ Our method only recovers the structures on 6 June from 22:31 to 22:32; this ~~may be is~~ because of the data version of the magnetometer dataset that was available at the time of that study. Since then, a new version with an improved offset and temperature calibration was published which we have used in this study. With the new offset calibration, the events found by Volwerk et al. (2016a) are no longer identified as mirror modes ~~as~~  
195 they fail to satisfy the criteria. This is therefore not an indication that the method is flawed but is simply due to the underlying dataset version.

A closer inspection reveals that many of the mirror mode candidates found by the magnetic field only method are compressional magnetic field structures, also known as steepened waves (Ostaszewski et al., 2020). This is expected because compressional structures also have a large  $\Delta B/B$  and may satisfy the angle criteria as well. However, it is clear that they are not mirror  
200 modes and lack the characteristic  $B-n$  antiphase behaviour expected for mirror modes; therefore the method needs to be expanded to eliminate those false positive detections. We conclude therefore that the magnetic-field only method is insufficient to unambiguously detect mirror mode intervals in the highly dynamic cometary environment. This is not surprising and can be easily mitigated in the next step of the selection method.

**Anti-correlation method:** While many compressional structures are characterised by the magnetic field and plasma density being in phase, mirror modes show a clear anti-correlation between those two quantities. Thus, a new another selection criterion is introduced ~~, which formalises the method described in as was done by~~ Simon Wedlund et al. (2022) (see also Table 1, Criterion 5). We compute the Pearson correlation coefficient  $\mathcal{R}$  between the magnetic field and the density for each mirror mode candidate interval. To ensure that high-frequency variations do not interfere with this calculation, the data are smoothed with a moving average over 3s, which allows for the removal of most high frequencies while preserving the general trend. We only retain those candidates where the correlation coefficient is lower than  $-0.7$ , which means that the least-squares linear regression model can explain at least  $\sim 50\%$  of the variation in the magnetic field data.

After applying the  $B-n$  anti-correlation criterion on the initial mirror-mode candidate database, only 2508 possible events remain. Of those events, there are cases where density and magnetic field anti-correlate but the signature does not show a clear wave-like train structure, i.e. at least one peak or dip in the interval in question (Fig. A1). Thus, to filter out these mirror mode candidates, a peak/dip identification method is also implemented. This is a new addition with respect to the work of Simon Wedlund et al. (2022) at Mars to account for the dynamics of the cometary plasma near the nucleus.

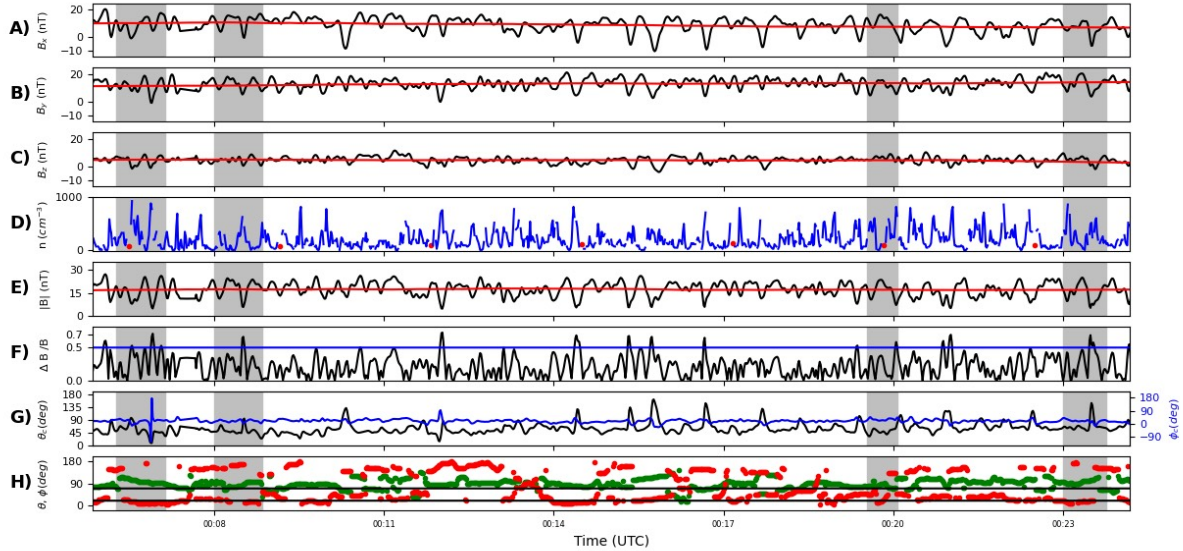
**Peak/dip identification method:** The peak/dip identification method consists of three steps. Firstly, to filter out the mirror mode candidates that have no peaks or dips, a linear fit is calculated (separately) for the magnetic field strength and for the plasma density data during the mirror mode candidate time interval. If the linear fit's  $\mathcal{R}^2$  value is higher than 0.7 the candidate is removed due to its linear behaviour. Secondly, for the rest of the candidates that satisfy the  $\mathcal{R}^2$  condition, the peaks and dips with the highest prominence (height above the background) for both magnetic field strength and plasma density are computed. Finally, if the time difference between the magnetic field strength minimum and plasma density maximum (and vice versa) is lower than half of the maximum prominence (of the plasma density and magnetic field strength peaks-dips) in the time interval, then we can ensure that these minima and maxima are related in time to each other and that we retain an anti-correlated, mirror mode-like behaviour. The method is illustrated in Appendix A and Fig. A2. In the end, after applying these successive steps to ensure that only unambiguous highly compressional mirror modes are retained, 565 'true' mirror mode-like events remain.

~~It should be noted that ion-cyclotron waves have not been detected at comet 67P. Since there is no electron/Churyumov-Gerasimenko, possibly due to the elevated plasma- $\beta$  within the inner coma (Götz, 2019). Also, the presence of magnetic holes at 67P (Plaschke et al., 2018) may suggest a high plasma- $\beta$  environment (Baumgärtel, 1999), more conducive to the generation of mirror modes. Thus, although we are unable to check if ion temperature data available, we cannot verify that these events are indeed associated with associated with high plasma- $\beta$  or with a temperature anisotropy due to the unavailability of data. Even without this final step, we thus consider these structures to be strongly 'mirror-mode like':~~ for readability, we will refer to these events as ~~mirror modes-~~ 'mirror modes' in the following discussions.

### 3 Results

First, we will present two individual cases for mirror modes, in order to verify our selection method and dive deeper into the structure of the mirror modes themselves. Second, we will perform a statistical study of the occurrence of mirror modes in the





**Figure 1.** Mirror mode train found on 10 February 2015. Four unambiguous events (marked by [purple lines](#)[grey shaded intervals](#)) were detected from 00:06:16 to 00:07:08, 00:08:08 to 00:08:51, 00:19:32 to 00:20:04 and 00:23:00 to 00:23:46 respectively. (a-c) Magnetic field components (in CSEQ) in black and the rolling average of the data in red. (d) Plasma density, LAP sweep derived density in red, and MIP-LAP cross calibrated density in blue. (e) Magnetic field strength in black and the rolling average in red. (f)  $\Delta B/B$  from the mirror mode identification procedure. (g) Magnetic field cone and clock angles in black and blue respectively. (h) Angles  $\theta$  (green) and  $\phi$  (red) between the background field directions and the minimum/maximum variance directions from the mirror mode identification procedure respectively.

plasma environment. This will allow us to make inferences about where they could be generated and the plasma through which they travel.

### 3.1 Case Studies

240 In the following section we have chosen to focus on two particular events: the first one is an example of a train of mirror modes that are similar to the classical structures found in the environment of comet 1P/Halley (Volwerk et al., 2014), at 67P (Volwerk et al., 2016a) in a previous study and at Venus and Mars ([Volwerk et al., 2016b](#); [Schmid et al., 2014](#); [Simon Wedlund et al., 2022](#)) ([Schmid et al., 2014](#); [Volwerk et al., 2016b](#); [Simon Wedlund et al., 2022](#); [Simon Wedlund et al., 2023](#)). The second event is representative of a set of mirror modes that are found deeper in the coma of the comet.

Fig. 1 shows about 15 minutes of observations in February 2015, when the spacecraft was at a radial distance of 105 km with respect to the comet, and the gas production rate was about  $4.0 \times 10^{26} \text{ s}^{-1}$  as derived from measured neutral densities. The average plasma density and average magnetic field strength of this event are  $200 \text{ cm}^{-3}$  and 17 nT respectively.

Four mirror mode structures (marked by purple lines shaded grey) were identified by the selection method described in Sect. 2.2; each event always contains at least one peak in  $\Delta B/B$  (panel f) that reaches above 0.5, according to our selection method. In addition, all events exhibit the necessary anti-correlation of the magnetic field magnitude (panel e) and the density (panel d) as well as the requisite angle constraints (panel h).

Although only four the four marked intervals were identified as unambiguous mirror mode structures, there are other signatures in the magnetic field, especially between 00:14 and 00:17 UT, that resemble the other mirror mode events. We suspect that these do not fulfil our stringent criteria but could still be mirror modes, following similar remarks made in Simon Wedlund et al. (2022). This is the only interval in our database where such a train of mirror modes was observed.

It should be noted that the third mirror-mode interval in Fig. 1 (from left to right) only satisfies the  $\Delta B/B$  criterion at the end of the interval instead of where there is an increase in the magnetic field strength and a decrease in the plasma density; this is due to the MVA time interval used to obtain the  $\Delta B/B$  values.

In accordance with Volwerk et al. (2016a) we compute the eigenvectors for an interval of 30s each, and assign the highest value of  $\Delta B/B$  within those 30s to that interval. Then, although there is no peak in the  $\Delta B/B$  criterion where the magnetic field strength and plasma density are anti-correlated, there is a  $\Delta B/B$  peak that satisfies the criterion somewhere in the 30s interval.

On the other hand, for the third event in Fig. 1, the selection method did not identify the second of data at the time of the peak in  $\Delta B/B$  as a mirror mode because, although that second satisfies the  $\Delta B/B$  and there is a respective  $B-n$  anti-correlation, it does not satisfy the eigenvalue or angle criteria.

We also computed the magnetic field angles in the CSEQ system as an extra check for linear polarisation, as shown in the paper of Tsurutani et al. (2011), where they found that the angles were typically below  $10^\circ$ . The cone angle  $\theta_c$  and the clock angle  $\phi_c$  are defined as:

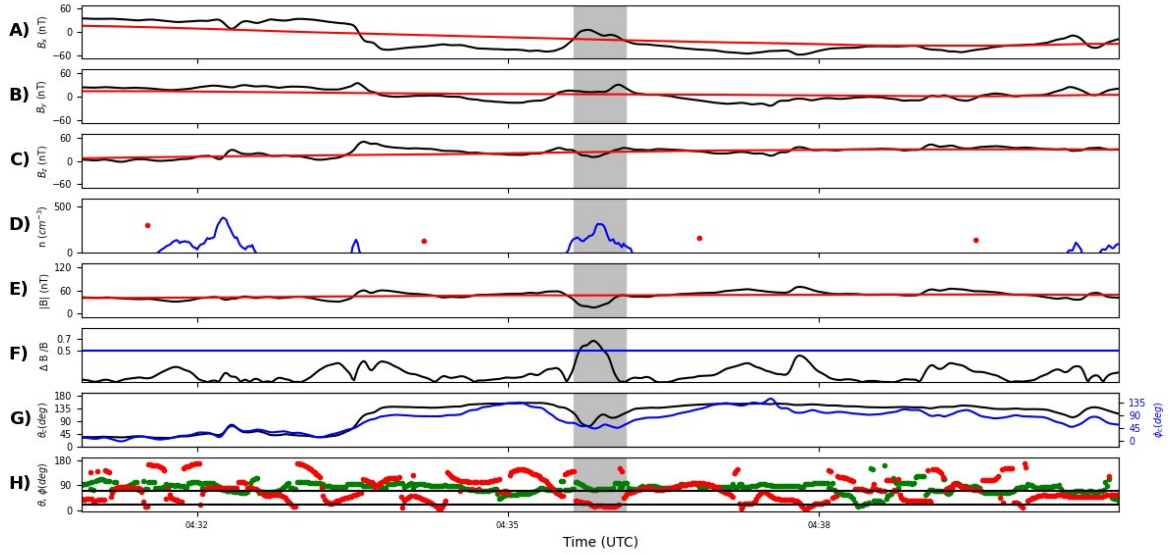
$$\theta_c = \text{atan} \left( \frac{\sqrt{B_y^2 + B_z^2}}{B_x} \right) \quad (3)$$

$$\phi_c = \text{atan} \left( \frac{B_z}{B_y} \right). \quad (4)$$

As can be seen in Table 2, the variation of these two angles is small but slightly larger than found by Tsurutani et al. (2011). This is not unexpected, as the cometary environment is more turbulent and smaller than magnetosheaths at planets with intrinsic magnetic fields (e.g. Earth, Jupiter, Saturn) and mirror mode structures may not have had enough time to fully grow. In summary, this event is most like the classical picture of mirror modes as described in Volwerk et al. (2016a).

|           | Beginning | End      | $\Delta\theta_c$ (°) | $\Delta\phi_c$ (°) |
|-----------|-----------|----------|----------------------|--------------------|
| 1st Event | 00:06:16  | 00:07:08 | 20.7                 | 19.9               |
| 2nd Event | 00:08:08  | 00:08:51 | 17.8                 | 19.2               |
| 3rd Event | 00:19:32  | 00:20:04 | 21.0                 | 11.3               |
| 4th Event | 00:23:00  | 00:23:46 | 17.3                 | 14.6               |

**Table 2.** Dates and maximum variations for the cone and clock angles for the train of mirror mode events using a 10-minute moving standard deviation. The time length used for the moving standard deviation does not impact the angle variations significantly.



**Figure 2.** 17 August 2015 mirror mode single event. (a-c) Magnetic field components (in CSEQ) in black and the rolling average of the data is in red. (d) Plasma density, LAP sweep derived density in red and MIP-LAP cross calibrated density in blue (negative values are not shown in this subplot). (e) Magnetic field strength in black and the rolling average in red. (f)  $\Delta B/B$  from the mirror mode identification procedure. (g) Magnetic field cone and clock angles in black and blue, respectively. (h) Angles  $\theta$  (green) and  $\phi$  (red) between the background field directions and the minimum/maximum variance directions from the mirror mode identification procedure, respectively. The mirror mode event is marked by purple lines a grey-shaded interval lasting from 04:35:38 to 04:36:09.

## 275 Event 2: 17 August 2015

Event 2, shown in Fig. 2, occurred on 17 August 2015, when the spacecraft was at a radial distance of 327 km to the nucleus. The gas production rate based on in-situ measurements was  $1.2 \times 10^{28} \text{ s}^{-1}$ , at a heliocentric distance of 1.24 AU. The average plasma density and average magnetic field strength of this event are  $168 \text{ cm}^{-3}$  and 29 nT respectively.

In this case, we show an isolated event (marked by ~~purple lines~~ a grey-shaded interval) identified by the selection method described in Sect. 2.2; representative of the events found around perihelion. Again, there is a clear anti-correlation between the density and the magnetic field magnitude (panels d and e).  $\Delta B/B$  is also clearly higher than 0.5, the minimum and maximum variance angles are above  $70^\circ$  and below  $20^\circ$ , as requested by the selection method. The cone and clock angle variations ( $\Delta\theta_c = 46.1^\circ$  and  $\Delta\phi_c = 39.9^\circ$  respectively) indicate that there is a slightly larger rotation of the field during the mirror mode event. Again, this is larger than found by Tsurutani et al. (2011) and larger than for the other event. We attribute this to the fact that this event was found at a high gas production rate in the innermost coma where the cometary environment is at its most turbulent.

## Comparison of Events

The two examples show that, because our mirror mode identification criteria are quite stringent, we manage to find events that are particularly clear. Both events show structures with unambiguous mirror-mode characteristics, albeit at different times during the development of the plasma environment of the comet. Mirror modes are usually found to have sizes of roughly 1-3 water ion gyroradii ( $r_g$ ) at both comet 1P/Halley and comet 67P if they are locally generated and at  $10 - 16r_g$  if they are generated upstream and convected to the point of observation (Schmid et al., 2014; Volwerk et al., 2016a). To estimate this characteristic, we introduce the normalised length scale  $L^*$ :

$$L^* = \frac{L}{r_g} \quad (5)$$

with  $L = v_B \Delta t$ , which becomes:

$$L^* = \frac{v_B \Delta t}{\frac{v_B m}{qB}} = \Delta t \omega_g \quad (6)$$

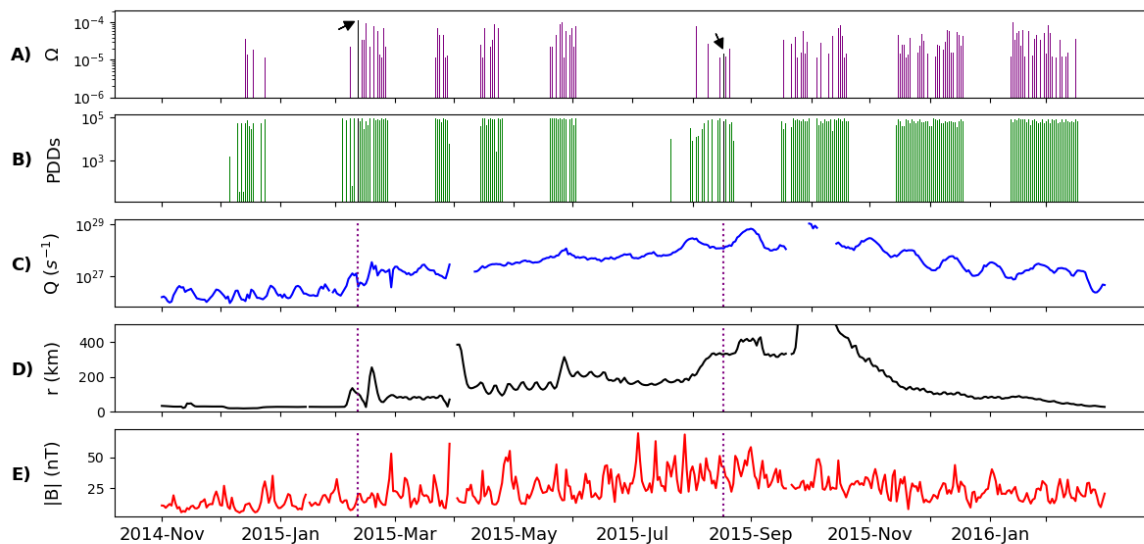
where  $\Delta t$  is the duration of the mirror mode,  $v_B$  is the ion bulk velocity and  $\omega_g$  is the ion gyrofrequency  $\omega_g = qB/m$ . This calculation assumes that the mirror mode convects with the bulk flow and that the pick-up ions are gyrating around the plasma reference frame, with  $v_{\text{perp}} = \|v_B\|$ . We now assume that the mirror mode wave train in Event 1 is embedded in a 20nT field. This results in  $L^* = (5.5, 4.6, 3.4, 4.9)$  for the four events for water ions. The isolated mirror mode in Event 2 lasts 31 s. If we assume a pure water coma with a background magnetic field of 30 nT (see Fig. 2), this gives  $L^* \sim 4.9$ . All observed structures are of roughly the same size with regards to the local pick-up ion gyroradius. The values are slightly larger than what was previously found for locally generated mirror modes, indicating that the mirror modes have likely been generated upstream of Rosetta's location and have convected downstream with the plasma flow. The lack of trains of mirror modes would then imply that mirror modes diffuse and/or are overshadowed by the large-scale turbulence in the inner coma (Goetz et al., 2016). ~~This is reminiscent of the findings by Plaschke et al. (2018) who~~ It has been shown before that plasma structures that are produced upstream in the solar wind or cometosheath can convect downstream and are changed as they travel through the cometary plasma; such a behaviour has already been observed at Earth as demonstrated by a recent study of magnetic holes crossing the Earth's bow shock (Karlsson et al., 2022). For example, Plaschke et al. (2018) showed that magnetic holes from the solar wind can traverse the cometary coma and are modified by the changing plasma conditions. In fact, Pokhotelov et al. (2008)

concluded that when non-linear terms are included, mirror modes in a non-Maxwellian plasma can develop into soliton modes that resemble magnetic holes. While that model is certainly oversimplified compared to the situation at the comet, it at least shows that soliton mirror modes can develop, in agreement with our observations.

### 3.2 Statistical Study

315 We have identified 565 mirror mode intervals in the Rosetta data from November 2014 to March 2016. The large number of events found with our method allows us to characterise the mirror modes and to study whether there are specific conditions under which the mirror modes occur preferentially. We therefore, perform a statistical study of the events.

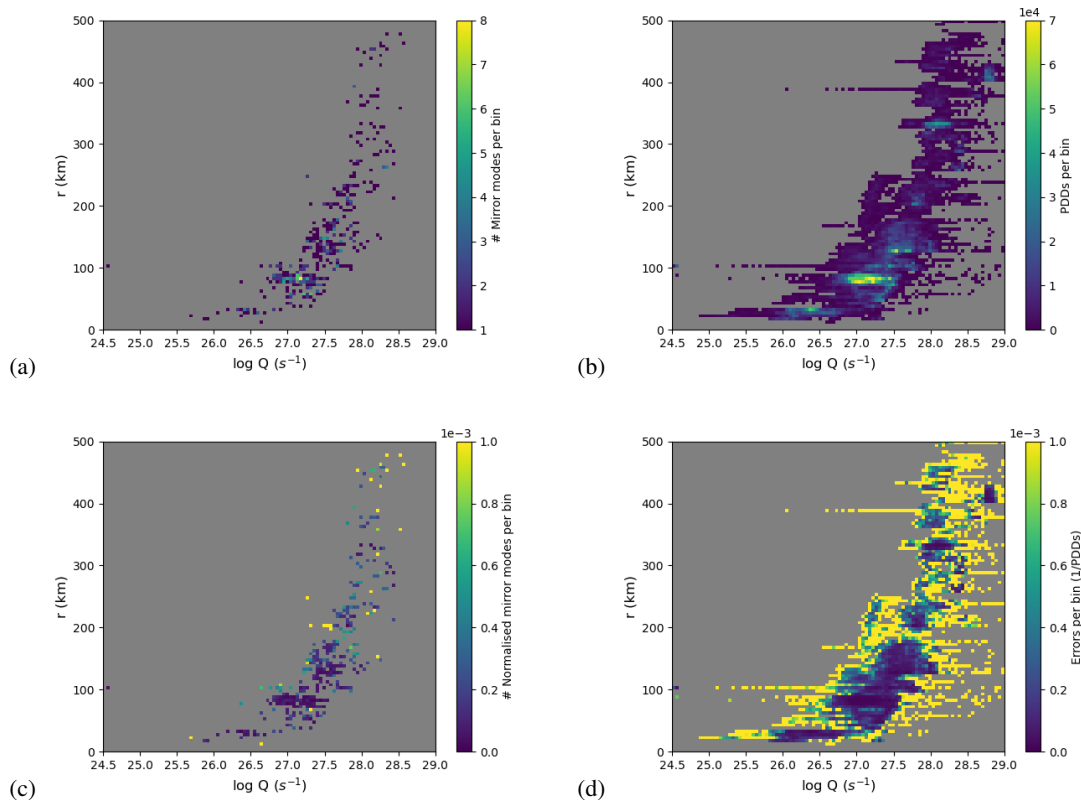
There are two limiting factors to this statistical study: 1) the availability of well calibrated magnetic field data and 2) the availability of high time resolution density data. 1) means that we only cover gas production rates of roughly  $Q > 10^{26} \text{ s}^{-1}$ , but  
 320 2) is not as easily categorised. We therefore, normalise all detection rates to the number of available density observations, this normalisation consist of dividing the amount of mirror modes found per day with the amount of plasma density availability in seconds per day.



**Figure 3.** (a) Normalised mirror mode occurrence rate (number of mirror modes divided by the plasma density data in seconds per day). The left arrow indicates the train of mirror modes shown in Fig. 1 and the right arrow the perihelion event shown in Fig. 2. (b) Plasma density data in seconds (PDDs) per day. (c) Cometary gas production rate  $Q$  in  $\text{s}^{-1}$ . (d) Cometocentric distance  $r$  of the spacecraft in km. The y axis is range-limited for better visibility: this removes part of the dayside excursion that went up to 1500km from the comet nucleus around October 2015. (e) Average magnetic field strength per day in nT. Vertical dotted purple lines are added in panels (c)-(e) in order to pinpoint the timing of the events shown in Figs. 1 and 2.

Fig. 3 explores the link between the found mirror modes with the gas production rate, cometocentric distance and magnetic field strength over time. The detection rate (panel a) is normalised to the availability of plasma density observations (panel b).  
 325 The two events discussed in the previous section are marked with arrows or dotted vertical lines.

Overall, mirror modes are detected whenever plasma density data is available, independent of gas production rate, heliocentric distance or magnetic field strength. As expected, the outgassing rate and magnetic field magnitude increase as the comet reaches perihelion (Hansen et al., 2016; Goetz et al., 2017), but there seems to be no pattern to the occurrence rate of the mirror modes that correlates with this increase. There is also no indication that mirror modes preferentially occur far from (or  
 330 near) the nucleus. However, the spacecraft trajectory and outgassing rate are not independent parameters and therefore a more careful treatment is necessary.



**Figure 4.** Cometocentric distance vs gas production rate 2D histograms using  $100 \times 100$  bins. (a) Mirror modes' distribution (# mirror modes per bin). (b) Plasma density data availability (PDDs per bin). (c) Normalised mirror modes distribution (# mirror modes/ PDDs per bin). (d) One-count normalisation errors (for more see text).

The following histograms were plotted using the mean value of the cometocentric distance, magnetic field magnitude,  $x$  coordinate and  $\rho$  for each detected mirror mode (these values are obtained using data relative to each mirror mode time

interval), where  $\rho$  is defined as:

$$335 \quad \rho = \sqrt{y^2 + z^2} \quad (7)$$

Bins of dimensions  $100 \times 100$  were used for all histograms. Fig. 4 shows the mirror mode occurrence in a gas production rate and cometocentric distance histogram, with panel a showing where mirror modes are found, panel b the availability of data, panel c the normalised mirror mode occurrence rate and panel d the normalisation errors assumed as  $\pm 1$  mirror mode normalised by plasma density data availability per bin. As above, it is difficult to discern any trends. The mirror mode occurrence rate seems  
340 to be entirely determined by the coverage of the spacecraft. Due to operational constraints, the spacecraft was consistently at higher cometocentric distances for high gas production rates, and the closest approach distance was strongly correlated with the dust environment and therefore the outgassing rate. It stands to reason that Rosetta spent most of the mission in the same region of the plasma environment (Goetz et al., 2016). As the gas production rate increases, so does the cometocentric distance of the spacecraft and the expansion of regions like, e.g., the diamagnetic cavity, solar wind ion cavity and the bow shock. It  
345 is therefore not surprising that there is little variation in the mirror mode occurrence rate, as Rosetta stayed roughly in the same region at all times. While there are some bins with high (yellow) occurrence rates, those all occur when there is poor coverage of the density and therefore they are associated with large error bars as shown in panel d. We conclude that there is no discernible trend in the occurrence rate of the mirror modes.

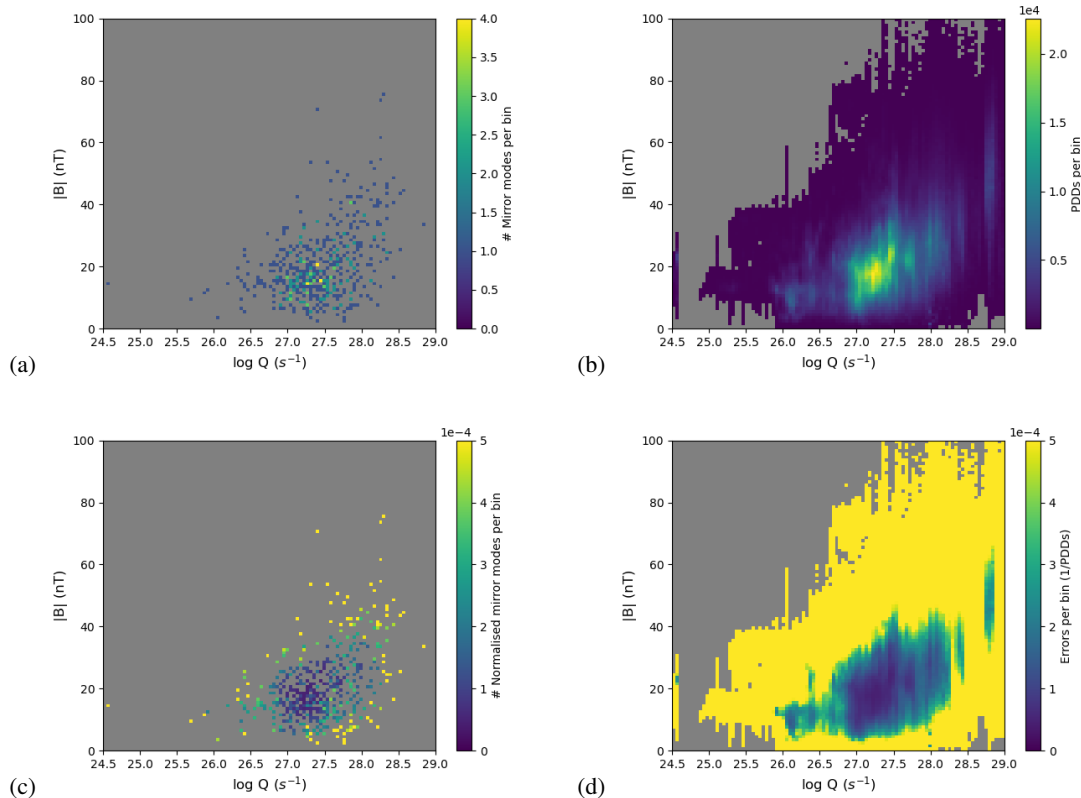
The measured magnetic field strength is also not independent of the gas production rate (Goetz et al., 2016), therefore Fig. 5  
350 shows the distribution of mirror modes in a  $Q - B$  diagram. The format of panel a, b, c and d is the same as in Fig. 4. We again note that most bins with high occurrence rates are found in areas of poor density data coverage and we therefore have to take into account high error bars (panel d). As before, there is no discernible trend, mirror modes are found at all gas production rates and magnetic fields.

Lastly, we investigate the spatial occurrence rate of these mirror modes. Fig. 6 shows their distribution in a  $x - \rho$  diagram in  
355 cylindrical CSEQ coordinates.

Again, due to operational constraints, the coverage is quite poor. Nevertheless, we should be able to determine whether mirror modes occur preferentially at high  $x$  or at any distance. As above, the mirror mode occurrence rate (panel c) does not show any clear pattern in this coordinate system.

From these figures we conclude that there are no discernible factors, whether they are magnetic field strength, cometocentric  
360 distance or outgassing rate, driving the mirror mode occurrence rate.

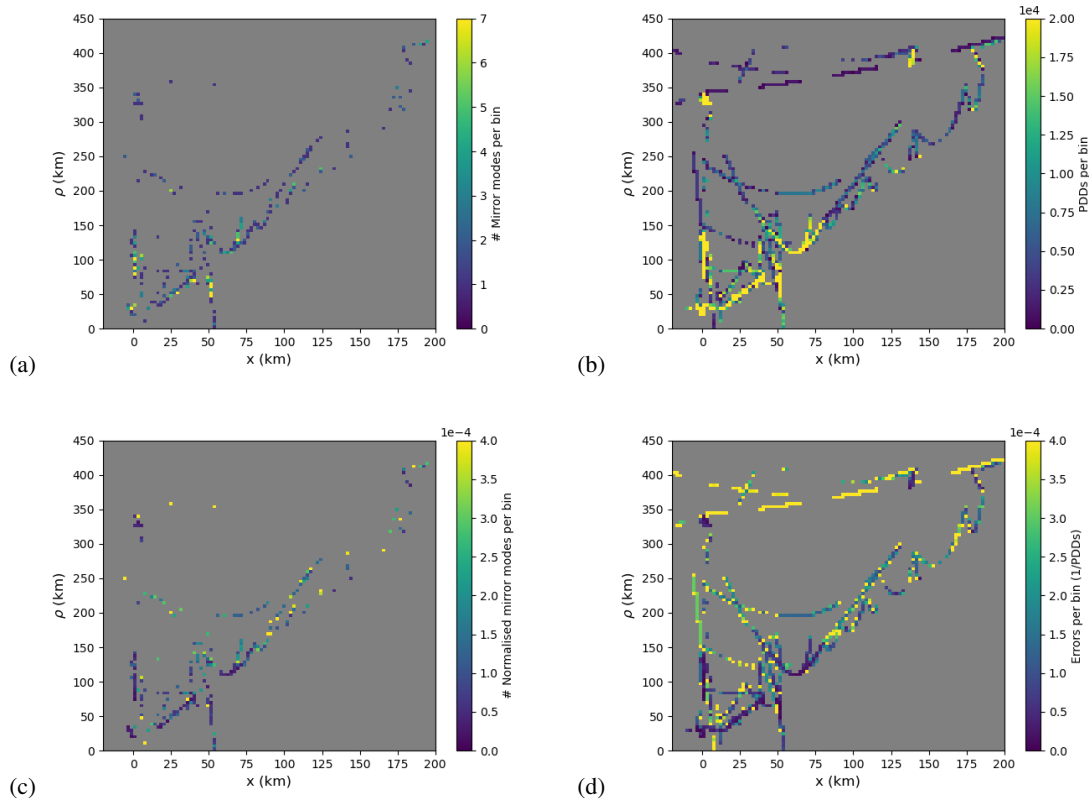
The morphology of the mirror mode, specifically whether the magnetic field exhibits a peak (enhancement in the  $B$ -field magnitude) or a dip (depressions in  $|B|$ ), has previously been related to the stage of mirror mode evolution. At Jupiter, Joy et al. (2006), following similar comments at Saturn (Bavassano Cattaneo et al., 1998), remarked that dip structures occurred more often in the deep magnetosheath close to the magnetopause in a relatively low-beta plasma, whereas peaks occurred in the  
365 middle of the magnetosheath in a comparatively higher-beta plasma. Structures containing a mix of dips and peaks, labelled 'others' or 'quasi-periodic' in the study of Joy et al. (2006), were seen everywhere in the magnetosheath, but more specifically closer to the bow shock. This behaviour is also seen at Earth (Soucek et al., 2008)(Soucek et al., 2008; Génot et al., 2011)



**Figure 5.** Magnetic field strength vs gas production rate 2D histograms using  $100 \times 100$  bins. **(a)** Mirror modes distribution (# mirror modes per bin). **(b)** Plasma density data availability (PDDs per bin). **(c)** Normalised mirror modes distribution (# mirror modes/PDDs per bin). **(d)** One-count normalisation errors (for more see text)

. Hence, extending the model of Bavassano Cattaneo et al. (1998), Joy et al. (2006) hypothesised an evolutionary link between these morphologies, with trains of mirror modes created first as a mix of peaks and dips, and progressively evolving towards peaks in the non-linear saturation phase of the instability, and, convected down to the magnetopause, finally decaying as dips. ~~Although the~~ The first part could be substantiated with in-situ Earth magnetosheath measurements ~~, the~~ by the Cluster mission and in simulations (Génot et al., 2011). Using a simple magnetohydrodynamic model, Passot et al. (2006) showed that mirror modes associated with dips in the magnetic field are usually observed in the magnetosheath at low, but above unity, plasma- $\beta$ , while peaks were reported where the plasma- $\beta$  is very high. This is in agreement with observations and other simulations (Leckband et al., 1995; Pantellini, 1998). However, the decaying part of the scenario into magnetic dips remained difficult to prove at the time, with still more theoretical and modelling work actively done (Ahmadi et al., 2017). Such an evolution between morphologies of trains of mirror modes is reminiscent of similar ~~conclusions suggestions~~ based on observations of magnetic holes at comet ~~67P of often-related structures such as magnetic holes (Plaschke et al., 2018)~~ 67P





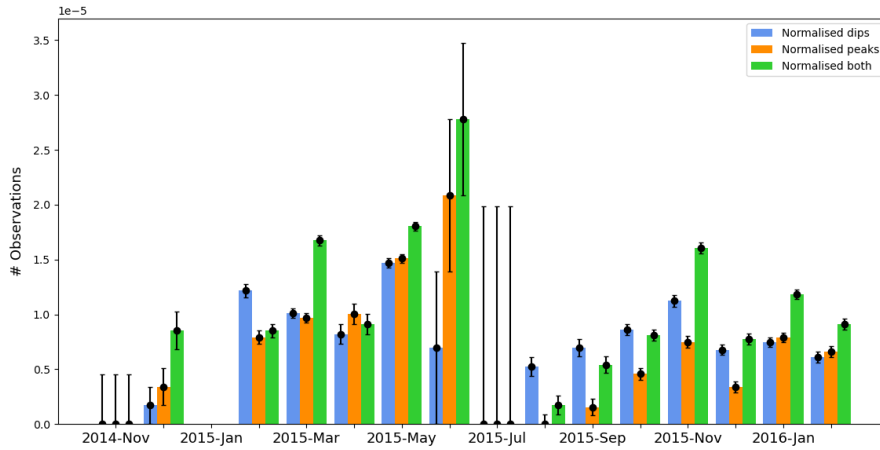
**Figure 6.** 2D histograms of  $\rho$  vs  $x$  using  $100 \times 100$  bins. (a) Mirror modes distribution (# mirror modes per bin). (b) Plasma density data availability (PDDs per bin). (c) Normalised mirror modes distribution (# mirror modes/ PDDs per bin). (d) One count normalisation errors (for more see text).

(see Fig. 5 of Plaschke et al., 2018), with the magnetic structure sometimes changing to a more complex form than a simple dip.

We therefore determined for each event whether the change in magnetic field was an increase (peak) or decrease (dip) above the background field. This determination is not always clear, as some events exhibit both peaks and dips: we therefore also introduced the category “both” to refer to them (see Fig. A3 in Appendix B).

In total, there are 150 peaks, 185 dips and 230 peaks and dips simultaneously (‘both’). Fig. 7 shows the normalised occurrence rate of all three categories per month.

No density data is available for January 2015 and very little data is available for July 2015. The number of peaks seems to rise steadily towards perihelion, with most being detected in June 2015. There is also a decrease in the number of observations after perihelion. Specifically, the mean number of peaks dropped by 40% of the mean peak events before perihelion. No such clear trend is visible for dips, dropping 5% of the mean number of observations before perihelion. The mean number of both peaks and dips dropped by 15% of the value before perihelion.



**Figure 7.** Normalised mirror modes with an increase (peak), decrease (dip) or both (category ‘both’) in the magnetic field magnitude above the background magnetic field (# mirror modes/ PDDs per month). Error bars show the one-count errors ( $\pm 1$  normalised mirror mode per month). January 2015 has no error bars because there is no plasma density data availability for this month. Also, although we did not identify any mirror modes in July 2015, this month has the largest error bars because it only contains a few days with plasma density data availability (see Fig. 3 panel b).

In general, all detection rates decrease after 67P reaches perihelion, with peaks being the most sensitive to this trend. More specifically, with a slight increase towards November 2015 followed by a substantial decrease. The last category which includes both peaks and dips behaves similarly to the peaks.

On Fig. 7, the Rosetta mission spanned different cometocentric and heliocentric distances as well as varying outgassing rates and solar EUV conditions, which are difficult to disentangle. Before and after perihelion conditions (13 August 2015), the outgassing rate of the comet differs in evolution and intensity (Hansen et al., 2016), which is expected to affect the efficiency of the different possible sources of temperature anisotropy (pick-up ion unstable distributions, quasi-perpendicular shock, etc., see Mazelle et al., 1989; Mazelle et al., 1991). Around perihelion, the standoff position of the well-formed cometary bow shock was estimated from realistic models to be about  $15\text{--}20 \times 10^3$  km (Alho et al., 2021). At the time, Rosetta orbited around 300 km from the nucleus, i.e., at least 50 times closer than the expected shock location. After perihelion, the outgassing rate decreased steadily, with the shock’s expected standoff distance reducing faster than Rosetta’s cometocentric distance, as it stayed within 100 km of the nucleus. This indicates that, around perihelion, Rosetta was relatively deeper in the magnetosheath than later on, with a sufficiently large magnetosheath for mirror-mode structures to evolve. The perihelion data in August 2015 shows no peaks which is compatible with the idea of Bavassano Cattaneo et al. (1998) and Joy et al. (2006) for a situation at a magnetised planet. There, a prevalence of dips occurs deeper in the magnetosheath, suggesting that the structures around perihelion at the comet may have been created in the wake of the quasi-perpendicular shock.

When the outgassing rate is lower, a weak asymmetric shock may form ~~(that is, the first stage of the shock's formation, see the 'infant bow shock')~~ (that is, the first stage of the shock's formation, see the 'infant bow shock' as reported by Gunell et al., 2018; Goetz et al., 2021a). However, such a shock-like structure may be too weak to generate the temperature anisotropy to drive mirror-mode unstable conditions in the plasma, in which case the pick-up ion process, always present and linked to the EUV flux, would become the leading driver of mirror-mode generation. This is likely the case during most of the Rosetta mission. Indeed, when the outgassing rate is even lower, no shock is expected to form, as would be the case in the early stages of the mission (up to about Spring 2015) or, equivalently, later in the mission (after January 2016). However, mirror mode-like structures are still detected then. All of these effects are thus likely to be mixed in Fig. 7, which may prevent any clear trends to be seen. Because of relatively low statistics for the number of structures found in the Rosetta dataset, we cannot investigate this further at this stage. A precise understanding of all of these aspects, combining global numerical simulations driven by inputs from in-situ observations, is left to a future study.

#### 4 Discussion and Conclusions

In this study, we have used and adapted a well-known magnetic field-only method to identify mirror mode structures in the plasma environment of comet 67P.

~~A modification of the~~ An addition to this method was necessary, as the original implementation misidentified other compressional structures in the magnetic field as mirror mode events. The adapted method now takes into account the antiphase behaviour of the plasma density and the total magnetic field (which are expected characteristics of mirror modes), as well as the shape of the magnetic field and plasma density. With this, we were able to identify over 500 mirror mode-like events.

The characteristics of the identified events are in general in accordance with previous studies, although events tend to be more isolated (a single wave packet) than expected ~~(Volwerk et al., 2016a)~~ (Russell et al., 1987; Glassmeier et al., 1993; Tsurutani et al., 1999; Volwerk et al., 2016a). Only one clear event containing a train of mirror modes was found. However, many events are embedded in an environment that has signatures of mirror modes that do not satisfy our stringent criteria, which is also expected from an automatic algorithm (see Simon Wedlund et al., 2023, for a critical account). Mirror modes are expected to be mainly generated at comets due to the presence of unstable pick-up ion distributions or in the wake of the quasi-perpendicular bow shock. Since we find mirror modes even at outgassing rates that are too low for a bow shock to form, and there is no dependence of mirror mode occurrence on the cometary activity, we conclude that mirror modes at 67P are predominantly generated through a pick-up ion instability. Near perihelion, at high outgassing conditions, mirror modes could also be generated behind the bow shock far upstream of their place of detection, as their morphology is consistent with mirror modes that are created at planetary bow shocks and convect downstream (Simon Wedlund et al., 2022). There is also evidence to suggest that mirror modes are generated upstream of the measurement point since the normalised length scales  $L^*$  for the events described in this study are slightly larger than what was previously found for locally generated mirror modes (see section 3.1). As pick-up heavy ions are born upstream in the solar wind resulting in the classic ring-beam velocity distribution function, a temperature anisotropy may already arise in the solar wind plasma. Such a distribution function can give rise to mirror mode waves

440 and ion cyclotron waves. No ion cyclotron waves were observed during the Rosetta mission, possibly because the plasma beta is higher and therefore mirror modes are preferentially generated. Mirror modes are then convected downstream with the plasma and diffuse or are possibly destroyed by plasma turbulence (Hasegawa and Tsurutani, 2011; Volwerk et al., 2008) (Volwerk et al., 2008; Hasegawa and Tsurutani, 2011). Unfortunately, no reliable plasma temperature observations are available with Rosetta and an estimation of the plasma beta was not possible.

445 Mirror modes are found with a certain detection rate whenever data is available and there are no discernible trends with regards to gas production rate, magnetic field strength, or location in the coma. This is another indication that mirror modes are not generated locally, as the local plasma parameters and those in the generation region do not have to be the same.

In this study, we found that 10 out of 23 magnetic holes shown by Plaschke et al. (2018) were also identified as mirror modes by the selection method described in Sect. 2.2. This is unsurprising as mirror modes and magnetic holes share the characteristics that our detection method searches for; they are both compressional, pressure-balanced structures. Consequently, they are often thought to be related (Winterhalter et al., 1995). Plaschke et al. (2018) showed that magnetic holes are still observed in the inner coma, although solar wind protons are mostly replaced by cometary ions. This should also apply to mirror modes that are generated in the solar wind-dominated part of the cometosheath and convect into the cometary ion-dominated part.

In conclusion, ~~we performed case studies and statistical studies of~~ this is the first time that mirror modes in the cometary environment ~~for the first time using the Rosetta datasets. could be studied over a long period of time and at different gas production rates. This allows for a statistical treatment of events and to relate the occurrence to parameters such as gas production, background magnetic field and position of the spacecraft within the environment.~~

Our findings indicate that the mirror mode-like structures we see are most likely generated non-locally through a pick-up ion instability instead of the more classical planetary mechanism of perpendicular acceleration due to quasi-perpendicular shock conditions. This is in keeping with the results from Giotto's historical flyby of comet 1P/Halley (Mazelle et al., 1991; Schmid et al., 2014).

As plasma density data was used to filter many misidentified mirror modes by the magnetic field-only method, we emphasize that for future cometary space missions, plasma density detectors with 1-to-2-s temporal resolution and a complete field of view, are mandatory in order to characterise and study mirror mode phenomena. Moreover, ion temperature measurements with good accuracy are needed to derive the plasma- $\beta$  parameter and temperature anisotropy, two essential ingredients for the generation of instabilities. only then can we understand where and when the plasma becomes mirror mode unstable, how mirror modes develop and how they involve in this highly dynamic plasma environment. This would help to understand how the free energy that is available at the comet through pick-up ions is distributed.

*Code availability.* TEXT

470 *Data availability.* All Rosetta data is freely available on the Planetary Science Archive, hosted by ESA <http://psa.esa.int>. The MAG data that was used was the most up to date version (V9.0) at the time. A full list of the mirror mode events identified in this paper may be found here: <https://doi.org/10.5281/zenodo.7685489>

*Code and data availability.* TEXT

*Sample availability.* TEXT

475 *Video supplement.* TEXT

## **Appendix A: Mirror modes detection algorithm**

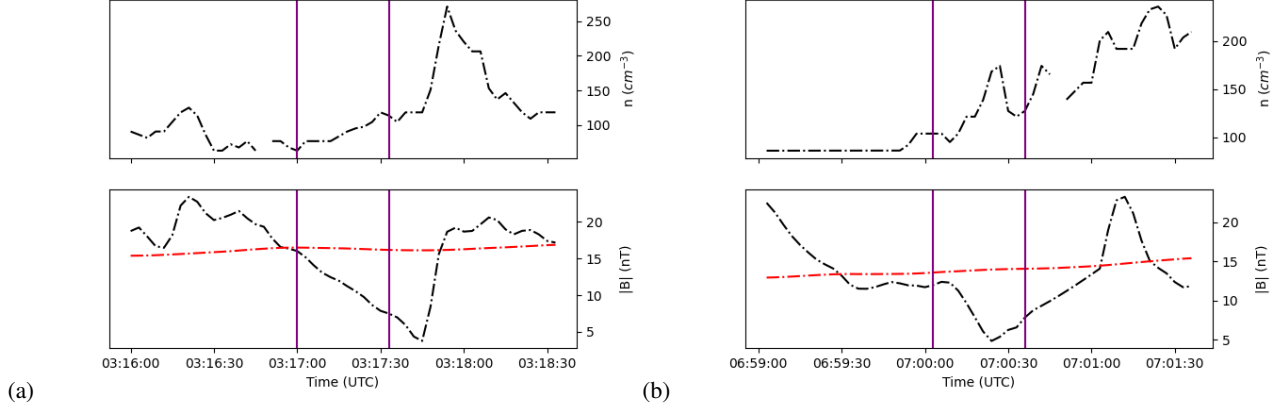
In the following section, we dive into details about the selection method described at Sect. 2.2, namely, the anti-correlation (Fig. A1) and the peak/dip (Fig. A2) identification methods. For both figures, data were smoothed with a moving average over 3 s which allows for the removal of the highest frequencies since we are interested in mirror modes (low-frequency structures).

480 On the one hand, as is shown in Fig. A1, although both mirror mode candidates (panel a and b) satisfy the  $B$ - $n$  anti-correlation criterion, panel a shows a linearly shaped event instead of a wave-like one. Many of the mirror mode candidates we found exhibit this behaviour. Thus, it was necessary to filter out those false positive events in order to retain structures like that of panel b (see single event shown in Fig. 2, representative of these structures).

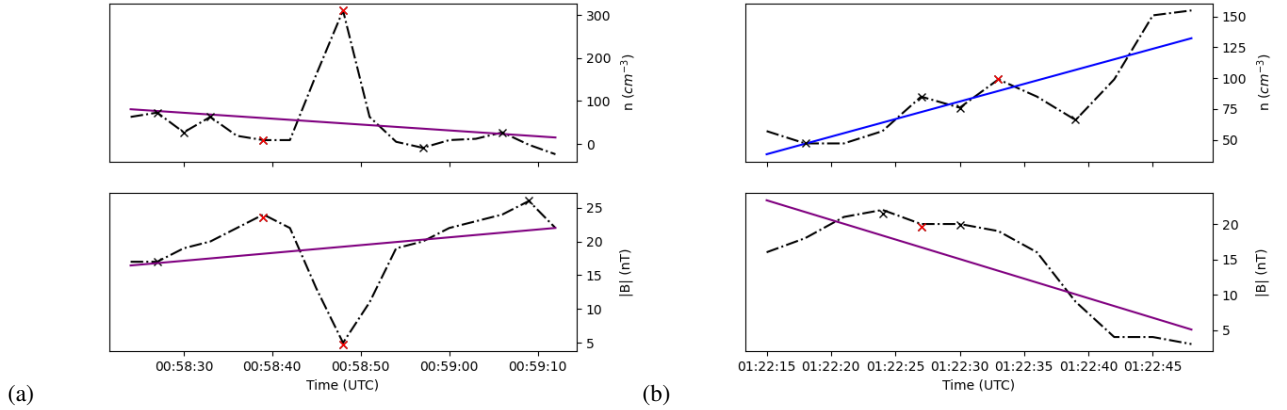
On the other hand, Fig. A2 explores how those linear events were filtered out. Panel a shows the expected mirror mode shape with a clear  $B$ - $n$  anti-correlation and the simultaneous plasma density peak and magnetic field strength dip. Panel b shows a linearly shaped plasma density data (blue instead of purple line). This event does not exhibit simultaneity between the plasma density peak and the magnetic field strength dip. If any of these conditions were not satisfied, the event was dropped.

## **Appendix B: Mirror modes morphology**

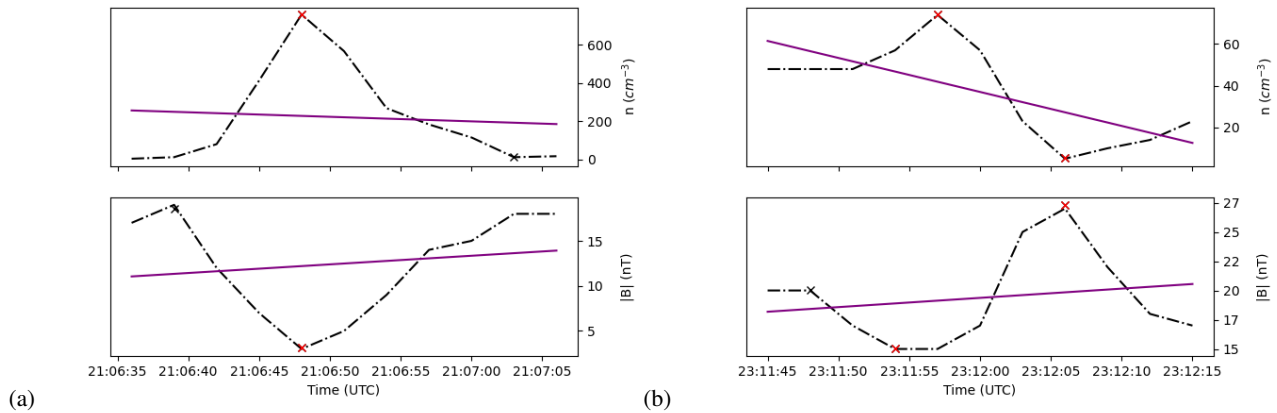
To study the morphology of the mirror modes, for each previously identified event, we determine if the change in the magnetic field magnitude is an increase (peak) or decrease (dip) above the background magnetic field. We found that some events exhibited both peaks and dips as shown in Fig. A3. Therefore, another category, labeled ‘both’, was also included in Fig. 7. Such a behaviour was also found in the study of Joy et al. (2006), where structures labelled as ‘others’ (similar to our ‘both’ category) were seen everywhere in the magnetosheath, with a maximum of occurrence closer to the bow shock. This behaviour is also seen at Earth (Soucek et al., 2008).



**Figure A1.** Examples of mirror mode candidates found on 25 May 2015 with  $B$ - $n$  anti-correlation. Plasma density and magnetic field strength in black and magnetic field strength's rolling average in red. **(a)** The mirror mode candidate is marked by purple lines lasting from 03:17:00 to 03:17:33 with  $\mathcal{R}(N_{\text{pl}}, |B|) = -0.85$  **(b)** The mirror mode candidates are marked by purple lines lasting from 07:00:03 to 07:00:36 with  $\mathcal{R}(N_{\text{pl}}, |B|) = -0.96$ .



**Figure A2.** Peak identification using the prominence method for 8th and 14th February 2015 respectively. Black crosses represent the local extrema (local maxima and minima) while the red crosses represent the extrema with the highest prominence of the structures. In order to drop events without peaks or dips like Fig. A1 (a) linear fits were computed separately for the plasma density and magnetic field strength. If any of the  $\mathcal{R}^2$  value is higher than 0.7 the event is dropped. Purple and blue lines show a satisfied and unsatisfied  $\mathcal{R}^2$  criterion respectively for the linear fits, with **(a)** Lasting from 00:58:24 to 00:59:12 with  $\mathcal{R}^2(N_{\text{pl}}) = 0.07$  and  $\mathcal{R}^2(|B|) = 0.1$  **(b)** Lasting from 01:22:15 to 01:22:48 with  $\mathcal{R}^2(N_{\text{pl}}) = 0.72$  and  $\mathcal{R}^2(|B|) = 0.68$ .



**Figure A3.** Black crosses represent the local extrema (local maxima and minima) while the red crosses represent the extrema with the highest prominence of the structures. Purple lines show a satisfied  $\mathcal{R}^2$  criterion for the linear fits. **(a)** Detection of a decrease in the magnetic field strength in antiphase with the plasma density on 18 February 2015. **(b)** Detection of both increase and decrease in the magnetic field strength in antiphase with the plasma density on 16 February 2015.

495 *Author contributions.* Conceptualisation and data analysis: ATF, CG. Writing: ATF, CG, CSW, MV. Editing and Discussion: all authors. Software and Visualization: ATF. Supervision: CG

*Competing interests.* None

*Disclaimer.* TEXT

500 *Acknowledgements.* The authors would like to acknowledge ISSI for the opportunity it offered for very valuable discussions on this topic as part of the International Team # 499 "Similarities and Differences in the Plasma at Comets and Mars" and Team # 517 "Towards a Unifying Model for Magnetic Depressions in Space Plasmas". CG was supported by an ESA Research Fellowship. ATF was supported by a Leiden University - ESA LEAPS project. The work by CSW is supported by the Austrian Science Fund (FWF) under projects N32035-N36 and [P35954-NXX](#)[P35954-N](#). AM was funded by the Swedish National Space Agency (SNSA) Grant 132/19.

## References

- 505 Ahmadi, N., Germaschewski, K., and Raeder, J.: Simulation of magnetic holes formation in the magnetosheath, *Physics of Plasmas*, 24, 122121, <https://doi.org/10.1063/1.5003017>, 2017.
- Alho, M., Jarvinen, R., Simon Wedlund, C., Nilsson, H., Kallio, E., and Pulkkinen, T. I.: Remote sensing of cometary bow shocks: modelled asymmetric outgassing and pickup ion observations, *Monthly Notices of the Royal Astronomical Society*, 506, 4735–4749, <https://doi.org/10.1093/mnras/stab1940>, 2021.
- 510 André, M., Odelstad, E., Graham, D. B., Eriksson, A. I., Karlsson, T., Stenberg Wieser, G., Vigren, E., Norgren, C., Johansson, F. L., Henri, P., Rubin, M., and Richter, I.: Lower hybrid waves at comet 67P/Churyumov-Gerasimenko, *Monthly Notices of the Royal Astronomical Society*, 469, S29–S38, <https://doi.org/10.1093/mnras/stx868>, 2017.
- Balsiger, H., Altwegg, K., Bochsler, P., Eberhardt, P., Fischer, J., Graf, S., Jäckel, A., Kopp, E., Langer, U., Mildner, M., Müller, J., Riesen, T., Rubin, M., Scherer, S., Wurz, P., Wüthrich, S., Arijs, E., Delanoye, S., De Keyser, J., Neefs, E., Nevejans, D., Rème, H., Aoustin, C., Mazelle, C., Médale, J.-L., Sauvaud, J. A., Berthelier, J.-J., Bertaux, J.-L., Duvet, L., Illiano, J.-M., Fuselier, S. A., Ghielmetti, A. G., Magoncelli, T., Shelley, E. G., Korth, A., Heerlein, K., Lauche, H., Livi, S., Loose, A., Mall, U., Wilken, B., Gliem, F., Fiethe, B., Gombosi, T. I., Block, B., Carignan, G. R., Fisk, L. A., Waite, J. H., Young, D. T., and Wollnik, H.: Rosina Rosetta Orbiter Spectrometer for Ion and Neutral Analysis, *Space Science Reviews*, 128, 745–801, <https://doi.org/10.1007/s11214-006-8335-3>, 2007.
- Baumgärtel, K.: Soliton approach to magnetic holes, *J. Geophys. Res.*, 104, 28 295–28 308, <https://doi.org/10.1029/1999JA900393>, 1999.
- 520 Bavassano Cattaneo, M. B., Basile, C., Moreno, G., and Richardson, J. D.: Evolution of mirror structures in the magnetosheath of Saturn from the bow shock to the magnetopause, *J. Geophys. Res.*, 103, 11 961–11 972, <https://doi.org/10.1029/97JA03683>, 1998.
- Breuillard, H., Henri, P., Bucciattini, L., Volwerk, M., Karlsson, T., Eriksson, A., Johansson, F., Odelstad, E., Richter, I., Goetz, C., Vallières, X., and Hajra, R.: The properties of the singing comet waves in the 67P/Churyumov–Gerasimenko plasma environment as observed by the Rosetta mission, *A&A*, <https://doi.org/10.1051/0004-6361/201834876>, 2019.
- 525 Eriksson, A. I., Boström, R., Gill, R., Åhlén, L., Jansson, S.-E., Wahlund, J.-E., André, M., Mälkki, A., Holtet, J. A., Lybäck, B., Pedersen, A., and Blomberg, L. G.: RPC-LAP: The Rosetta Langmuir Probe Instrument, *Space Science Reviews*, 128, 729–744, <https://doi.org/10.1007/s11214-006-9003-3>, 2007.
- Gary, S. P.: The Mirror and Ion Cyclotron Anisotropy Instabilities, *J. Geophys. Res.*, 97, 8519 – 8529, 1992.
- Gary, S. P., Fuselier, S. A., and Anderson, B. J.: Ion anisotropy instabilities in the magnetosheath, *J. Geophys. Res.*, 98, 1481–1488, 1993.
- 530 Génot, V., Schwartz, S. J., Mazelle, C., Balikhin, M., Dunlop, M., and Bauer, T. M.: Kinetic study of the mirror mode, *J. Geophys. Res.*, 106, 21 611–21 622, <https://doi.org/10.1029/2000JA000457>, 2001.
- Génot, V., Budnik, E., Hellinger, P., Passot, T., Belmont, G., Trávníček, P. M., Sulem, P. L., Lucek, E., and Dandouras, I.: Mirror structures above and below the linear instability threshold: Cluster observations, fluid model and hybrid simulations, *Annales Geophysicae*, 27, 601–615, <https://doi.org/10.5194/angeo-27-601-2009>, 2009a.
- 535 Génot, V., Budnik, E., Jacquy, C., Dandouras, I., and Lucek, E.: Mirror Modes Observed with Cluster in the Earth’s Magnetosheath: Statistical Study and IMF/Solar Wind Dependence, in: *Advances in Geosciences, Volume 14: Solar Terrestrial (ST)*, vol. 14, pp. 263–283, [https://doi.org/10.1142/9789812836205\\_0019](https://doi.org/10.1142/9789812836205_0019), 2009b.
- Génot, V., Broussillou, L., Budnik, E., Hellinger, P., Trávníček, P. M., Lucek, E., and Dandouras, I.: Timing mirror structures observed by Cluster with a magnetosheath flow model, *Annales Geophysicae*, 29, 1849–1860, <https://doi.org/10.5194/angeo-29-1849-2011>, 2011.



- 540 Glassmeier, K.-H. and Neubauer, F. M.: Low-frequency electromagnetic plasma waves at comet P/Grigg-Skjellerup: Overview and spectral characteristics, *J. Geophys. Res.*, 98, 20 921–20 936, <https://doi.org/10.1029/93JA02583>, 1993.
- Glassmeier, K.-H., Motschmann, U., Mazelle, C., Neubauer, F. M., Sauer, K., Fuselier, S. A., and Acuña, M. H.: Mirror modes and fast magnetoacoustic waves near the magnetic pileup boundary of comet P/Halley, *J. Geophys. Res.*, 98, 20 955–20 964, <https://doi.org/10.1029/93JA02582>, 1993.
- 545 Glassmeier, K.-H., Boehnhardt, H., Koschny, D., Kührt, E., and Richter, I.: The Rosetta Mission: Flying Towards the Origin of the Solar System, *Space Science Reviews*, 128, 1–21, <https://doi.org/10.1007/s11214-006-9140-8>, 2007a.
- Glassmeier, K.-H., Richter, I., Diedrich, A., Musmann, G., Auster, U., Motschmann, U., Balogh, A., Carr, C., Cupido, E., Coates, A., Rother, M., Schwingenschuh, K., Szegö, K., and Tsurutani, B.: RPC-MAG The Fluxgate Magnetometer in the ROSETTA Plasma Consortium, *Space Science Reviews*, 128, 649–670, <https://doi.org/10.1007/s11214-006-9114-x>, 2007b.
- 550 Goetz, C., Koenders, C., Hansen, K. C., Burch, J., Carr, C., Eriksson, A., Frühauff, D., Güttler, C., Henri, P., Nilsson, H., Richter, I., Rubin, M., Sierks, H., Tsurutani, B., Volwerk, M., and Glassmeier, K. H.: Structure and evolution of the diamagnetic cavity at comet 67P/Churyumov-Gerasimenko, *MNRAS*, 462, S459–S467, <https://doi.org/10.1093/mnras/stw3148>, 2016.
- Goetz, C., Volwerk, M., Richter, I., and Glassmeier, K.-H.: Evolution of the magnetic field at comet 67P/Churyumov-Gerasimenko, *MNRAS*, 469, S268–S275, <https://doi.org/10.1093/mnras/stx1570>, 2017.
- 555 Goetz, C., Gunell, H., Johansson, F., LLera, K., Nilsson, H., Glassmeier, K.-H., and Taylor, M. G. G. T.: Warm protons at comet 67P/Churyumov-Gerasimenko - implications for the infant bow shock, *Annales Geophysicae*, 39, 379–396, <https://doi.org/10.5194/angeo-39-379-2021>, 2021a.
- Goetz, C., Taylor, M., and Plaschke, F.: Singing comet waves - where are they generated?, in: 43rd COSPAR Scientific Assembly. Held 28 January - 4 February, vol. 43, p. 1119, 2021b.
- 560 Goetz, C., Behar, E., Beth, A., Bodewits, D., Bromley, S., Burch, J., Deca, J., Divin, A., Eriksson, A. I., Feldman, P. D., Galand, M., Gunell, H., Henri, P., Heritier, K., Jones, G. H., Mandt, K. E., Nilsson, H., Noonan, J. W., Odelstad, E., Parker, J. W., Rubin, M., Simon Wedlund, C., Stephenson, P., Taylor, M. G. G. T., Vigren, E., Vines, S. K., and Volwerk, M.: The Plasma Environment of Comet 67P/Churyumov-Gerasimenko, *Space Sci. Rev.*, 218, 65, <https://doi.org/10.1007/s11214-022-00931-1>, 2022.
- Götz, C.: The Plasma Environment of Comet 67P/Churyumov-Gerasimenko, Ph.D. thesis, Technische Universität Braunschweig, <https://doi.org/10.24355/dbbs.084-201907301322-0>, 2019.
- 565 Gunell, H., Nilsson, H., Hamrin, M., Eriksson, A., Odelstad, E., Maggiolo, R., Henri, P., Vallières, X., Altwegg, K., Tzou, C.-Y., Rubin, M., Glassmeier, K.-H., Stenberg Wieser, G., Simon Wedlund, C., De Keyser, J., Dhooghe, F., Cessateur, G., and Gibbons, A.: Ion acoustic waves at comet 67P/Churyumov-Gerasimenko – Observations and computations, *Astronomy and Astrophysics*, 600, A3, <https://doi.org/10.1051/0004-6361/201629801>, 2017.
- 570 Gunell, H., Goetz, C., Simon Wedlund, C., Lindkvist, J., Hamrin, M., Nilsson, H., LLera, K., Eriksson, A., and Holmström, M.: The infant bow shock: a new frontier at a weak activity comet, *A&A*, 619, L2, <https://doi.org/10.1051/0004-6361/201834225>, 2018.
- Hansen, K. C., Altwegg, K., Berthelier, J.-J., Bieler, A., Biver, N., Bockelée-Morvan, D., Calmonte, U., Capaccioni, F., Combi, M. R., De Keyser, J., Fiethe, B., Fougere, N., Fuselier, S. A., Gasc, S., Gombosi, T. I., Huang, Z., Le Roy, L., Lee, S., Nilsson, H., Rubin, M., Shou, Y., Snodgrass, C., Tenishev, V., Toth, G., Tzou, C.-Y., Simon Wedlund, C., and Rosina Team: Evolution of
- 575 water production of 67P/Churyumov-Gerasimenko: An empirical model and a multi-instrument study, *MNRAS*, 462, S491–S506, <https://doi.org/10.1093/mnras/stw2413>, 2016.
- Hasegawa, A.: Drift mirror instability of the magnetosphere., *Physics of Fluids*, 12, 2642–2650, <https://doi.org/10.1063/1.1692407>, 1969.

- Hasegawa, A. and Tsurutani, B. T.: Mirror mode expansion in planetary magnetosheaths: Bohm-like diffusion, *Phys. Rev. Lett.*, 107, 245005, <https://doi.org/10.1103/PhysRevLett.107.245005>, 2011.
- 580 Haser, L.: Distribution d'intensité dans la tête d'une comète, *Bulletin de la Societe Royale des Sciences de Liege*, 43, 740–750, 1957.
- Ip, W. H.: Global solar wind interaction and ionospheric dynamics, in: *Comets II*, edited by Festou, M. C., Keller, H. U., and Weaver, H. A., p. 605, 2004.
- Joy, S. P., Kivelson, M. G., Walker, R. J., Khurana, K. K., Russell, C. T., and Paterson, W. R.: Mirror mode structures in the Jovian magnetosheath, *Journal of Geophysical Research: Space Physics*, 111, <https://doi.org/https://doi.org/10.1029/2006JA011985>, 2006.
- 585 Karlsson, T., Trollvik, H., Raptis, S., Nilsson, H., and Madanian, H.: Solar wind magnetic holes can cross the bow shock and enter the magnetosheath, *Annales Geophysicae*, 40, 687–699, <https://doi.org/10.5194/angeo-40-687-2022>, 2022.
- Leckband, J. A., Burgess, D., Pantellini, F. G. E., and Schwartz, S. J.: Ion distributions associated with mirror waves in the earth's magnetosheath, *Advances in Space Research*, 15, 345–348, [https://doi.org/10.1016/S0273-1177\(99\)80106-9](https://doi.org/10.1016/S0273-1177(99)80106-9), 1995.
- Lucek, E. A., Dunlop, M. W., Balogh, A., Cargill, P., Baumjohann, W., Georgescu, E., Haerendel, G., and Fornacon, K. H.: Identification  
590 of magnetosheath mirror modes in Equator-S magnetic field data, *Annales Geophysicae*, 17, 1560–1573, <https://doi.org/10.1007/s00585-999-1560-9>, 1999.
- Madsen, B., Simon Wedlund, C., Eriksson, A., Goetz, C., Karlsson, T., Gunell, H., Spicher, A., Henri, P., Vallières, X., and Miloch, W. J.: Extremely low-frequency waves inside the diamagnetic cavity of comet 67P/Churyumov-Gerasimenko, *Geophysical Research Letters*, 45, 3854–3864, <https://doi.org/10.1029/2017GL076415>, 2018.
- 595 Mazelle, C., Rème, H., Sauvaud, J. A., d'Uston, C., Carlson, C. W., Anderson, K. A., Curtis, D. W., Lin, R. P., Korth, A., Mendis, D. A., Neubauer, F. M., Glassmeier, K. H., and Raeder, J.: Analysis of suprathermal electron properties at the magnetic pile-up boundary of comet P/Halley, *Geophys. Res. Lett.*, 16, 1035–1038, <https://doi.org/10.1029/GL016i009p01035>, 1989.
- Mazelle, C., Belmont, G., Glassmeier, K.-H., Le Quéau, D., and Rème, H.: Ultra low frequency waves at the magnetic pile-up boundary of comet P/Halley, *Adv. Space Res.*, 11, 73 – 77, [https://doi.org/10.1016/0273-1177\(91\)90014-B](https://doi.org/10.1016/0273-1177(91)90014-B), 1991.
- 600 Midgley, J. E. and Davis, L. J.: Calculation by a Moment Technique of the Perturbation of the Geomagnetic Field by the Solar Wind, *J. Geophys. Res.*, 68, 5111, <https://doi.org/10.1029/JZ068i018p05111>, 1963.
- Neugebauer, M., Goldstein, B. E., Winterhalter, D., Smith, E. J., MacDowall, R. J., and Gary, S. P.: Ion distributions in large magnetic holes in the fast solar wind, *J. Geophys. Res.*, 106, 5635–5648, <https://doi.org/10.1029/2000JA000331>, 2001.
- Ostaszewski, K., Glassmeier, K.-H., Goetz, C., Heinisch, P., Henri, P., Ranocha, H., Richter, I., Rubin, M., and Tsurutani, B.: Steepen-  
605 ing of magnetosonic waves in the inner coma of comet 67P/Churyumov-Gerasimenko, *Annales Geophysicae Discussions*, 2020, 1–37, <https://doi.org/10.5194/angeo-2020-84>, 2020.
- Pantellini, F. G. E.: A model of the formation of stable nonpropagating magnetic structures in the solar wind based on the nonlinear mirror instability, *J. Geophys. Res.*, 103, 4789–4798, <https://doi.org/10.1029/97JA02384>, 1998.
- Passot, T., Ruban, V., and Sulem, P. L.: Fluid description of trains of stationary mirror structures in a magnetized plasma, *Physics of Plasmas*,  
610 13, 102310, <https://doi.org/10.1063/1.2356485>, 2006.
- Plaschke, F., Karlsson, T., Götz, C., Möstl, C., Richter, I., Volwerk, M., Eriksson, A., Behar, E., and Goldstein, R.: First observations of magnetic holes deep within the coma of a comet, *A&A*, 618, A114, <https://doi.org/10.1051/0004-6361/201833300>, 2018.
- Pokhotelov, O. A., Sagdeev, R. Z., Balikhin, M. A., Onishchenko, O. G., and Fedun, V. N.: Nonlinear mirror waves in non-Maxwellian space plasmas, *Journal of Geophysical Research (Space Physics)*, 113, A04225, <https://doi.org/10.1029/2007JA012642>, 2008.

- 615 Price, C. P., Swift, D. W., and Lee, L. C.: Numerical simulation of nonoscillatory mirror waves at the Earth's magnetosheath, *J. geophys. Res.*, 91, 101–112, <https://doi.org/10.1029/JA091iA01p00101>, 1986.
- Remya, B., Reddy, R. V., Tsurutani, B. T., Lakhina, G. S., and Echer, E.: Ion temperature anisotropy instabilities in planetary magnetosheaths, *Journal of Geophysical Research (Space Physics)*, 118, 785–793, <https://doi.org/10.1002/jgra.50091>, 2013.
- Remya, B., Tsurutani, B. T., Reddy, R. V., Lakhina, G. S., Falkowski, B. J., Echer, E., and Glassmeier, K. H.: Large-amplitude, Circularly  
620 Polarized, Compressive, Obliquely Propagating Electromagnetic Proton Cyclotron Waves Throughout the Earth's Magnetosheath: Low Plasma  $\beta$  Conditions, *ApJ*, 793, 6, <https://doi.org/10.1088/0004-637X/793/1/6>, 2014.
- Richter, I., Koenders, C., Auster, H.-U., Frühauff, D., Götz, C., Heinisch, P., Perschke, C., Motschmann, U., Stoll, B., Altwegg, K., Burch, J., Carr, C., Cupido, E., Eriksson, A., Henri, P., Goldstein, R., Lebreton, J.-P., Mokashi, P., Nemeth, Z., Nilsson, H., Rubin, M., Szegő, K., Tsurutani, B. T., Vallat, C., Volwerk, M., and Glassmeier, K.-H.: Observation of a new type of low-frequency waves at comet 67P/Churyumov-  
625 Gerasimenko, *Annales Geophysicae*, 33, 1031–1036, <https://doi.org/10.5194/angeo-33-1031-2015>, 2015.
- Russell, C. T., Riedler, W., Schwingenschuh, K., and Yeroshenko, Y.: Mirror instability in the magnetosphere of comet Halley, *Geophys. Res. Lett.*, 14, 644–647, <https://doi.org/10.1029/GL014i006p00644>, 1987.
- Schmid, D., Volwerk, M., Plaschke, F., Vörös, Z., Zhang, T. L., Baumjohann, W., and Narita, Y.: Mirror mode structures near Venus and Comet P/Halley, *Ann. Geophys.*, 32, 651 – 657, 2014.
- 630 Simon Wedlund, C., Behar, E., Nilsson, H., Alho, M., Kallio, E., Gunell, H., Bodewits, D., Heritier, K., Galand, M., Beth, A., Rubin, M., Altwegg, K., Volwerk, M., Gronoff, G., and Hoekstra, R.: "Solar wind charge exchange in cometary atmospheres III. Results from the Rosetta mission to comet 67P/Churyumov-Gerasimenko", *Astronomy & Astrophysics*, <https://doi.org/10.1051/0004-6361/201834881>, 2019.
- Simon Wedlund, C., Volwerk, M., Mazelle, C., Halekas, J., Rojas-Castillo, D., Espley, J., and Möstl, C.: Making Waves: Mirror  
635 Mode Structures Around Mars Observed by the MAVEN Spacecraft, *Journal of Geophysical Research (Space Physics)*, 127, e29811, <https://doi.org/10.1029/2021JA029811>, 2022.
- Simon Wedlund, C., Volwerk, M., Mazelle, C., Rojas Mata, S., Stenberg Wieser, G., Futaana, Y., Halekas, J., Rojas-Castillo, D., Bertucci, C., and Espley, J.: Statistical distribution of mirror-mode-like structures in the magnetosheaths of unmagnetised planets – Part 1: Mars as observed by the MAVEN spacecraft, *Annales Geophysicae*, 41, 225–251, <https://doi.org/10.5194/angeo-41-225-2023>, 2023.
- 640 Sonnerup, B. U. Ö. and Scheible, M.: Minimum and Maximum Variance Analysis, in: *Analysis Methods for Multi-Spacecraft Data*, no. SR-001 in ISSI Scientific Report, pp. 185–220, ISSI/ESA, götz paschmann and patrick w. daly edn., 1998.
- Soucek, J., Lucek, E., and Dandouras, I.: Properties of magnetosheath mirror modes observed by Cluster and their response to changes in plasma parameters, *Journal of Geophysical Research (Space Physics)*, 113, A04203, <https://doi.org/10.1029/2007JA012649>, 2008.
- Sperveslage, K., Neubauer, F. M., Baumgärtel, K., and Ness, N. F.: Magnetic holes in the solar wind between 0.3 AU and 17 AU, *Nonlinear  
645 Processes in Geophysics*, 7, 191–200, <https://doi.org/10.5194/npg-7-191-2000>, 2000.
- Stevens, M. L. and Kasper, J. C.: A scale-free analysis of magnetic holes at 1 AU, *Journal of Geophysical Research (Space Physics)*, 112, A05109, <https://doi.org/10.1029/2006JA012116>, 2007.
- Szegő, K., Glassmeier, K.-H., Bingham, R., Bogdanov, A., Fischer, C., Haerendel, G., Brinca, A., Cravens, T., Dubinin, E., Sauer, K., Fisk, L., Gombosi, T., Schwadron, N., Isenberg, P., Lee, M., Mazelle, C., Möbius, E., Motschmann, U., Shapiro, V. D., Tsurutani, B., and Zank,  
650 G.: Physics of Mass Loaded Plasmas, *Space Science Reviews*, 94, 429–671, 2000.
- Taylor, M. G. G. T., Altobelli, N., Buratti, B. J., and Choukroun, M.: The Rosetta mission orbiter science overview: the comet phase, *Philosophical Transactions of the Royal Society of London Series A*, 375, 20160262, <https://doi.org/10.1098/rsta.2016.0262>, 2017.

- Trotignon, J. G., Michau, J. L., Lagoutte, D., Chabassière, M., Chalumeau, G., Colin, F., Décréau, P. M. E., Geiswiler, J., Gille, P., Grard, R., Hachemi, T., Hamelin, M., Eriksson, A., Laakso, H., Lebreton, J. P., Mazelle, C., Randriamboarison, O., Schmidt, W., Smit, A., Telljohann, U., and Zamora, P.: RPC-MIP: the Mutual Impedance Probe of the Rosetta Plasma Consortium, *Space Sci. Rev.*, 128, 713–728, <https://doi.org/10.1007/s11214-006-9005-1>, 2007.
- 655 Tsurutani, B. T. and Smith, E. J.: Hydromagnetic waves and instabilities associated with cometary ion pickup - ICE observations, *Geophys. Res. Lett.*, 13, 263–266, <https://doi.org/10.1029/GL013i003p00263>, 1986.
- Tsurutani, B. T., Smith, E. J., Anderson, R. R., Ogilvie, K. W., Scudder, J. D., Baker, D. N., and Bame, S. J.: Lion roars and nonoscillatory drift mirror waves in the magnetosheath, *J. Geophys. Res.*, 87, 6060–6072, <https://doi.org/10.1029/JA087iA08p06060>, 1982.
- 660 Tsurutani, B. T., Thorne, R. M., Smith, E. J., Gosling, J. T., and Matsumoto, H.: Steepened magnetosonic waves at comet Giacobini-Zinner, *J. Geophys. Res.*, 92, 11 074–11 082, <https://doi.org/10.1029/JA092iA10p11074>, 1987.
- Tsurutani, B. T., Lakhina, G. S., Smith, E. J., Buti, B., Moses, S. L., Coroniti, F. V., Brinca, A. L., Slavin, J. A., and Zwickl, R. D.: Mirror mode structures and ELF plasma waves in the Giacobini-Zinner magnetosheath, *Nonlinear Processes in Geophysics*, 6, 229–234, <https://doi.org/10.5194/npg-6-229-1999>, 1999.
- 665 Tsurutani, B. T., Lakhina, G. S., Verkhoglyadova, O. P., Echer, E., Guarnieri, F. L., Narita, Y., and Constantinescu, D. O.: Magnetosheath and heliosheath mirror mode structures, interplanetary magnetic decreases, and linear magnetic decreases: Differences and distinguishing features, *Journal of Geophysical Research (Space Physics)*, 116, A02103, <https://doi.org/10.1029/2010JA015913>, 2011.
- Volwerk, M.: ULF Wave Modes in the Earth's Magnetotail, in: *Low-Frequency Waves in Space Plasmas*, edited by A. Keiling, D.-H. L. and Nakariakov, V., pp. 141–160, AGU, Washington, 2016.
- 670 Volwerk, M., Zhang, T. L., Delva, M., Vörös, Z., Baumjohann, W., and Glassmeier, K.-H.: Mirror-mode-like structures in Venus' induced magnetosphere, *J. Geophys. Res.*, 113, E00B16, <https://doi.org/10.1029/2008JE003154>, 2008.
- Volwerk, M., Glassmeier, K. H., Delva, M., Schmid, D., Koenders, C., Richter, I., and Szegő, K.: A comparison between VEGA 1, 2 and Giotto flybys of comet 1P/Halley: implications for Rosetta, *Annales Geophysicae*, 32, 1441–1453, <https://doi.org/10.5194/angeo-32-1441-2014>, 2014.
- 675 Volwerk, M., Richter, I., Tsurutani, B., Götz, C., Altwegg, K., Broiles, T., Burch, J., Carr, C., Cupido, E., Delva, M., Dósa, M., Edberg, N. J. T., Eriksson, A., Henri, P., Koenders, C., Lebreton, J.-P., Mandt, K. E., Nilsson, H., Opitz, A., Rubin, M., Schwingenschuh, K., Stenberg Wieser, G., Szegő, K., Vallat, C., Vallières, X., and Glassmeier, K.-H.: Mass-loading, pile-up, and mirror-mode waves at comet 67P/Churyumov-Gerasimenko, *Annales Geophysicae*, 34, 1–15, <https://doi.org/10.5194/angeo-34-1-2016>, 2016a.
- 680 Volwerk, M., Schmid, D., Tsurutani, B. T., Delva, M., Plaschke, F., Narita, Y., Zhang, T., and Glassmeier, K.-H.: Mirror mode waves in Venus's magnetosheath: solar minimum vs. solar maximum, *Annales Geophysicae*, 34, 1099–1108, <https://doi.org/10.5194/angeo-34-1099-2016>, 2016b.
- Winterhalter, D., Neugebauer, M., Goldstein, B. E., Smith, E. J., Tsurutani, B. T., Bame, S. J., and Balogh, A.: Magnetic Holes in the Solar Wind and Their Relation to Mirror Mode Structures, p. 201, 1995.
- 685 Wu, C. S. and Davidson, R. C.: Electromagnetic instabilities produced by neutral-particle ionization in interplanetary space, *J. Geophys. Res.*, 77, 5399 – 5406, <https://doi.org/10.1029/JA077i028p05399>, 1972.
- Zhang, T. L., Baumjohann, W., Russell, C. T., Jian, L. K., Wang, C., Cao, J. B., Balikhin, M., Blanco-Cano, X., Delva, M., and Volwerk, M.: Mirror mode structures in the solar wind at 0.72 AU, *Journal of Geophysical Research (Space Physics)*, 114, A10107, <https://doi.org/10.1029/2009JA014103>, 2009.