

A case study of a ducted gravity wave event over northern Germany using simultaneous airglow imaging and wind-field observations

5 Sumanta Sarkhel¹, Gunter Stober^{2,3}, Jorge L. Chau², Steven M. Smith⁴, Christoph Jacobi⁵, Subarna Mondal¹, Martin G. Mlynczak⁶, and James M. Russell III⁷

¹Department of Physics, Indian Institute of Technology Roorkee, Roorkee – 247667, Uttarakhand, India

10 ²Leibniz-Institute of Atmospheric Physics, Schloßstr. 6, 18225 Kühlungsborn, Germany

³Institute of Applied Physics & Oeschger Centre for Climate Change Research, University of Bern, Sidlerstrasse 5, 3012 Bern, Switzerland

15 ⁴Center for Space Physics, Boston University, Boston, Massachusetts, USA

⁵Institute for Meteorology, Leipzig University, Leipzig, Germany

⁶Atmospheric Sciences Division, NASA Langley Research Center, Mail Stop 420, Hampton, VA, USA

20 ⁷Center for Atmospheric Sciences, Hampton University, 23 Tyler Street, Hampton, VA, USA

Correspondence to: Sumanta Sarkhel (sarkhel@ph.iitr.ac.in)

Abstract

An intriguing and rare gravity wave event was recorded on the night of 25 April 2017 using a multi-wavelength all-sky airglow imager over northern Germany. The airglow imaging observations at multiple altitudes in the mesosphere and lower thermosphere region reveal that a prominent upward propagating wave structure appeared in O(¹S) and O₂ airglow images. However, the same wave structure was observed to be very faint in OH airglow images, despite OH being usually one of the brightest airglow emissions. In order to investigate this rare phenomenon, the altitude profile of the vertical wavenumber was derived based on collocated meteor radar wind-field and SABER temperature profiles close to the event location. The results indicate the presence of a thermal duct layer in the altitude range of 85-91 km in the south-west region of Kühlungsborn, Germany. Utilizing these instrumental datasets, we present evidence to show how a leaky duct layer partially inhibited the wave progression in the OH airglow emission layer. **The coincidental appearance of this duct layer caused to exhibit as the faint wave front in the OH airglow images compared to O(¹S) and O₂ airglow images during the course of the night over northern Germany.**

Keywords: Airglow Imager, MMARIA meteor radar, Gravity Waves, Mesospheric Temperature Inversion, Thermal Ducting

1. Introduction

Multi-wavelength nighttime all-sky airglow imaging has become a widely used technique to retrieve valuable information of atmospheric gravity waves (GWs) as well as the dynamics of the mesosphere and lower thermosphere (MLT) region. GWs play a key role in the upper atmospheric dynamics because of their inherent properties of transferring momentum and energy from lower atmospheric regions to the middle and upper atmosphere (Fritts and Alexander, 2003). However, the ducting inhibits the vertical propagation of GWs and confines the major flow of wave energy and momentum to a rather limited altitude region (Chimonas and Hines, 1986). The earlier imaging studies using airglow emissions originating in the MLT region revealed different types of dynamical events like quasi-monochromatic GWs, ripples, mesospheric fronts (Taylor et al. 1995; Walterscheid et al., 1999; Hecht et al., 2001; Smith et al., 2003; Makhlof et al., 1995; Bageston et al., 2011; Lakshmi Narayanan et al., 2012; Sarkhel et al., 2012; 2015a; 2015b; 2019; Hozumi et al., 2019; Mondal et al., 2021).

The characteristics and morphology of gravity wave events have been investigated for decades. Depending upon the characteristics and background conditions, the evolution of GWs in the atmosphere can be rather different. Large-scale waves (**several tens of kilometers horizontal wavelength**) can easily reach to the MLT region depending on their phase velocity compared to the background mean flow whereas small-scale (**a few tens of kilometers horizontal wavelength**) waves are more susceptible to thermal and Doppler ducting (Walterscheid et al., 1999). The evolution of GWs and their interaction with the mean flow have been extensively studied using the linear theory of GWs. The waves can exert a significant amount of drag in the mean flow of the atmosphere and thereby play an important role in the middle atmospheric circulation. **In addition, waves can break due to occurrence of neutral instabilities into and generate secondary waves or ripple type structures** (Vadas et al., 2018; Becker & Vadas, 2018; Heale et al., 2020). Large-scale GWs can interact with the mean flow and generate one of the most puzzling mesospheric phenomena known as the mesospheric fronts (Dewan and Picard, 1998, 2001; Smith et al., 2005 and references therein). Mesospheric fronts can also propagate over long horizontal distances and therefore act as an efficient mechanism for transferring energy and momentum over long ranges with negligible energy loss in the atmosphere (Medeiros et al., 2018). Therefore, GWs propagation through a region of thermal/Doppler ducting can explain some of the properties of mesospheric fronts like the long-distance horizontal propagation.

The inhomogeneities in the **temperature and wind field are responsible for the static/convective and dynamic instabilities respectively in the atmosphere which affect** the wave propagation. In particular, vertical gradients in temperature and wind field give rise to numerous interesting phenomena like wave reflection, wave ducts or waveguides in the MLT region. GWs can be ducted in a region where the vertical wavenumber (m) of the GWs is real ($m^2 > 0$) and the region is situated between two atmospheric altitude regions of imaginary vertical wavenumber ($m^2 < 0$). Once the GW falls into this ducted region, it gets trapped because of repeated reflection from the bottom and upper layer

(reflectance layers). However, the wave can freely propagate in a horizontal direction. If there is a reflection layer at a certain height, GWs can get reflected from this layer. The ducted wave is called thermally ducted or Doppler ducted (or both) according to whether $m^2 < 0$ arises predominantly from the temperature gradient or the vertical shear of the horizontal wind (Walterscheid et al., 1999). A thermal duct is isotropic and will support ducted wave activity with any orientation, whereas a Doppler duct is very sensitive to the wave orientation (Fritts and Yuan, 1989). In this paper, we present a case study of a mesospheric wave structure using a multi-wavelength all-sky airglow imager and simultaneous measurements of 2D horizontally resolved wind-field in the MLT region over northern Germany. Here, we present a first case study with the MMARIA meteor radar network in Germany (Stober and Chau, 2015; Stober et al., 2018) and co-located all-sky airglow imaging observations combining the available horizontally resolved wind and airglow information to infer the intrinsic GW parameters.

2. Experimental Techniques

A multi-wavelength all-sky airglow imager was procured from Boston University, USA and installed at Leibniz Institute for Atmospheric Physics, Kühlungsborn (54.11°N, 11.77°E), Germany. The imager has been operating since November 2016. The imager design is similar to an all-sky imager that is being operated at Padua Observatory, Asiago (Smith et al., 2017). The details of the imager and a few results are available in Vargas et al. (2021). The imager features an Andor back-illuminated bare-CCD camera with 1024×1024 pixels resolution and a 16 mm fish-eye lens that allows a maximum field of view of 180°. On the night of 25 April 2017, the images were binned 2×2 (in real time) in order to achieve better signal-to-noise ratio. The system is equipped with a temperature-controlled filter wheel that can record OH broadband emission (695–1050 nm) with a notch at 866.0 nm, Na emission (589.3 nm), O₂ emission (866.0 nm) and O(¹S) emission (557.7 nm) in the MLT region. The cycle of the filter wheel operation (with exposure time) is: OH: 27 Seconds \Rightarrow 866.0 nm: 134 Seconds \Rightarrow 557.7 nm: 260 Seconds \Rightarrow 589.3 nm: 263 Seconds. Based on rocket measurements, it has been reported that these airglow emissions originate from layers of 8–11 km full width at half maxima (FWHM) or thickness with centroid height of around 86, 91, 94 and 97 km, respectively (Watanabe et al., 1981; Ogawa et al., 1987; Baker and Stair, 1988; Gobbi et al., 1992; Mende et al., 1993; Hedin et al., 2009). In addition, the imager also records thermospheric emission O(¹D) (630.0 nm) from ~250 km altitude with around 40 km layer thickness (Sobral et al., 1992). The imager is also equipped with a background filter in which the nightglow is minimal. This filter has a central wavelength of 605.0 nm and is used for photometric calibration of the images. In our investigation, we have used only emission originating from the MLT region. The bandwidth of the 589.3 nm, 866.0 nm, and 557.7 nm filters is 2.0 nm whereas, the OH filter is a broadband (695–1050 nm) with a notch at 866.0 nm in order to exclude the O₂ emission line completely. Hence, there is no contamination of OH broadband emission

110 from other mesospheric lines (557.7 and 589.3 nm). The nearest lines of OH ($X^2\Pi$) are at P1(6) and R(7,3) (854.9 and 877.1 nm respectively) that are quite far-off from the O₂ emission line (866.0 nm) (Chamberlain, 1961). In addition, the wave signatures in the OH (when detected) and O₂ images differed in both morphology and phase. Hence, we are confident that no significant broadband OH occurred within the 866.0 nm filter bandwidth. The integration times for the 589.3 nm, 866.0 nm, and 557.7 nm images were 120s and 15s for the OH filter.

115 The second data set used in this study is based on a meteor radar network operated in northern Germany known as MMARIA (Multi-static, Multi-frequency Agile Radar for Investigations of the Atmosphere) (Stober and Chau, 2015). In this study, we used the Juliusruh meteor radar (54.6° N, 13.3°E) (e.g. Hoffmann et al., 2010) with a transmit power of 30 kW operated at 32.55 MHz, the Collm meteor radar (51.1°; 13.0°E) (e.g. Jacobi et al., 2007) with a transmit power of 15 kW operated at 36.2 MHz and a three multi-static passive systems installed at Kühlungsborn and Juliusruh. The bistatic meteor detections from transmissions originating in Juliusruh and Collm are received
120 interferometrically at 32.55 MHz and 36.2 MHz, respectively. The horizontally resolved 2D wind-field is based on the packed retrieval algorithm presented in Stober et al. (2018). Further, we restricted the domain size to be slightly larger than the field of view of the airglow imager. The temporal resolution of the 2D wind-field was 1 hour with a vertical resolution of 2 km at altitudes between 80 and 100 km.
125 The spatial grid for horizontally resolved winds is chosen to be 30 km × 30 km parallel to the Earth's surface. All coordinates and radial velocities are corrected for projection errors using the WGS84 model (National Imagery and Mapping Agency, 2000). An initial validation of the 2D wind-field retrievals, and more details of the technique, can be found in Stober et al. (2018, 2021).

Another data set is the altitude profile of temperature that has been obtained from the SABER
130 instrument onboard TIMED satellite (Data source: <http://saber.gats-inc.com>; v2.0; Level 2A). The retrieval of the ambient temperature at a given altitude is carried out using 15 μm emission from CO₂ molecules in the atmosphere. The location of the SABER measurement is less than 150 km from the south-west corner of the imager FOV from where the wave entered. The uncertainty in the SABER temperature retrievals is around ±3 K at 80 km, ±8 K at 90 km, ±1–2 K below 95 km and ±4 K at 100
135 km in the midlatitudes (García-Comas et al., 2008).

Figure 1 reveals the map of northern Europe where it shows the location of the multi-wavelength airglow imager at Kühlungsborn, the Collm and Juliusruh meteor radar and the receiver stations at Juliusruh and Kühlungsborn. The yellow box is the maximum horizontal coverage of the airglow imager in the MLT region. The red asterisks are the SABER temperature measurement
140 locations. It is to be noted here that SABER 1 measurement location is quite far from the imager field of coverage whereas, the measurement location of SABER 2 is close to the edge of the horizontal coverage of the airglow imager.

3. Data Analyses

145 In order to retrieve scientific information, the raw images need to be processed. The standard method
of image processing including geospatial calibration, star removal and unwarping are available in the
literature (Garcia et al., 1997; Mondal et al., 2019 and references therein). In most situations, the
unwarped images are noisy and not very clear. It can be verified from the Figures 2-5 (a-f) that the
unwarped images are noisy for all the airglow filters. For the derivation of the wavelength, apparent
150 periodicity and phase velocity of the perturbation from the intensity fluctuation, the unfiltered unwarped
images may not be suitable. Therefore, in order to enhance the intensity perturbation by suppressing the
noise, the 2D FFT filtering techniques have been adopted from Mondal et al. (2019). In this filtering
technique, Savitzky–Golay (SG) and Gaussian window sizes are crucial. These window sizes are
optimized for each airglow emission filter which is discussed in Mondal et al. (2019) in detail. **In the**
155 **present case, the window size of SG-filter is taken as 400 pixels for OH, 350 pixels for 589.3 nm, 300**
pixels for 866.0 nm, 300 pixels for 557.7 nm filter. On the other hand, the Gaussian filter has standard
deviation (σ) of 20 pixels for OH, 20 pixels for 589.3 nm, 15 pixels for 866.0 nm, 15 pixels for 557.7
nm filter. Here, 1 pixel on the airglow images is nearly equal to 1.16 km. It may be noted that the wave-
like features in the filtered unwarped images are enhanced (shown in subplots of g-1 of Figures 2-5).
160 These filtered unwarped images are utilized to derive the apparent phase velocity and horizontal
wavelength of the wave structure. In order to proceed further, a line is overlaid along the direction of
propagation for the particular number of consecutive images in which the wave structure has been
detected visually. This arrow (shown in subplots of g-1 of Figures 2-5) represents the wave vector of
the structure. From the intensity variation along the line of propagation, the apparent phase velocity and
165 horizontal wavelength of the observed structure have been derived. The detailed methodology is
available in Mondal et al. (2019).

In order to investigate the vertical propagation characteristics of the observed wave structure
through the OH, Na, O₂ and O(¹S) airglow emission layers, the altitude variation of squared vertical
wavenumber (m^2) needs to be computed. Following Nappo (2002), the relation for the vertical
170 wavenumber can be expressed as:

$$m^2(z) = \frac{N^2}{\hat{c}^2} - \frac{U_k'}{H \hat{c}} - k_x^2 - \frac{1}{4H^2}. \quad (1)$$

Here, k_x ($2\pi/\lambda_x$) is the horizontal wavenumber (λ_x is the horizontal wavelength), H is the scale height,
 U_k is the projected wind along the wave vector, U_k' is the vertical wind shear, c is the observed phase
velocity and \hat{c} is the intrinsic phase velocity ($c - U_k$). **The values of $H = 5.4$ km and $k_x = 0.084$ km⁻¹**
175 **($\lambda_x = 75$ km).** The altitude profile of the projected wind along the wave vector has been calculated from
the altitude variation of the 2D horizontally resolved wind field within the observed structure. In
addition, the 2D wind field at the centroid height of each airglow emission are overlaid on the filtered
unwarped airglow images (shown in subplots of g-1 of Figures 2-5). This approach gives us the
opportunity to calculate the horizontal wind velocity within the observed wave structure more precisely.

180

4. Results

Figures 2-5 depict all-sky airglow imaging observations at four different airglow emissions originating at the MLT region along with the MMARIA 2D horizontally resolved wind-field measurements over northern Germany during the cloudless and moonless night of 25 April 2017. Figures 2(a-f) show the sequence of unwarped images observed in O(¹S) airglow emission. The central dark spot appearing in every all-sky airglow image is due to the van Rhijn effect; a combination of the finite width of the emission layer and the variation of the line of sight through the layer with increasing zenith distance. Figures 2(g-l) depict the corresponding 2D FFT filtered images overlaid on the MMARIA horizontal 1 hour averaged wind field in two dimensions at the centroid height of O(¹S) airglow emission in the MLT region. In a similar manner, the upper horizontal subplots in Figures 2-4 represent the sequence of unwarped images observed in O₂, Na and OH band emissions, respectively. The bottom subplots represent their corresponding 2D FFT filtered images overlaid on the MMARIA 2D horizontally resolved wind field at the centroid height of the respective airglow emissions. The winds are analyzed as an average along the propagation path of the wave fronts. The spatial wind retrievals imply a large spatial coherence of about 60 km (the correlation length is set to include the next grid cell) and a temporal correlation of about 30 minutes. Thus, a certain degree of coherence is an essential part of the wind analysis for this case. Furthermore, due to the thermal wind balance, changes in the vertical temperature profile led to corresponding changes of the winds at the different altitudes. The spatial variability of the wind field is also indicated by the bending of the wave fronts found in Figures 2 and 3, whereas the wind fields remain stable at the altitude of the OH emission line presented in Figure 5. We can observe the existence of a front-wall with small undulation wave structure in all the filters. The horizontal propagation of the observed wave structure is from south-west to north-east and entered within the field-of-view (FOV) of the imager over northern Germany. The wave structure entered at the south-western edge of the FOV of the imager at around 21:35 UT. Although we have shown the sequence of images (Figures 2-5) from 21:56 UT onward when the wave structure is fairly visible in the south-west corner of the imager FOV. The wave structure is very prominent in both O(¹S) and O₂ images. On the other hand, it is very faint in Na and OH images. It is interesting to note that the measurement location of SABER 2 falls in the path of the propagation of the wave structure.

In order to investigate the vertical phase propagation of the wave structure, the intensity of slices of O(¹S), O₂ and Na images were plotted at a given time in the direction of propagation and they have been horizontally shifted based on its deduced phase speed of the leading front, to account for the acquisition time differences between each image. The observed mean phase velocities deduced from O(¹S), O₂ and Na images are 50.2 ± 4.8 m/s, 46.6 ± 4.2 m/s and 44.5 ± 9.7 m/s respectively. Since the wave structure appeared to be very faint in the OH images, observing the GWs in these images becomes practically impossible. A key element in the analyses is the horizontal vs. altitude intensity plot to determine the vertical phase propagation of the observed GW similar to Smith et al. (2005). The green,

red and orange lines in each subplot of the Figures 6 (a-d) depict the intensity variation of O(¹S), O₂ and Na airglow emissions respectively along their line of propagation vector considering the large-scale vertical wind shear and, thus obtaining the intrinsic phase progression, which is actually needed to distinguish the vertical propagation direction. The slices have been separated vertically in order to represent the assumed relative vertical separations of the emission layers in the MLT region corrected for the observed phase speed of the wave. We can clearly observe that the intrinsic phase in the O₂ airglow (centroid emission height: 94 km) is always lagging O(¹S) airglow (centroid emission height: 97 km). Thus, the lagging phase front in O₂ airglow, which is in the lower height, as compared to the O(¹S) airglow indicates that the phase front appeared in O(¹S) and then O₂ airglow emission layer. Therefore, the vertical phase progression of the wave structure is downward. Hence, based on this information, we can conclude that we have captured an event of an upward propagating wave in O(¹S) and O₂ airglow emission layers on the night of 25 April 2017 over northern Germany. However, the intrinsic phase in the Na airglow (centroid emission height: 91 km) appears to lead the O₂ airglow, indicating that the vertical phase progression of the wave structure is different in the Na airglow emission layer as compared to O(¹S) and O₂ airglow emission layers. **In addition, the Na airglow intensity variation also seems to be different at larger horizontal distances. However, we are unable find out the cause based on the present dataset.**

In order to find the vertical propagation characteristics of the wave structure, the derivation of the altitude profile of m^2 is required with the knowledge of the vertical temperature profiles and the projected wind along the wave vector. In addition, it is clear from Equation (1) that we also need to calculate the intrinsic phase velocity of the wave structure. Hence, the horizontally spatially-averaged projected wind profile within the region of wave structure and along the wave vector have been calculated and the hourly values for 21:30-22:30 UT are shown in Figure 7a. Figures 7b and 7d depict the altitude profiles of SABER temperature along with the measurement uncertainty plotted as horizontal error bar over the SABER 1 and 2 locations (refer to Figure 1) respectively. It is to be noted that the SABER temperature measurements were carried out around 1 hour prior to the event. **The change in the temperature within this short time scale is mainly due to wave perturbations, e.g., atmospheric tides. However, one hour is still a short enough time scale to assume that the change in the background temperature is very small and, thus, is not going to affect the analyses. In addition, we didn't observe any wave activities before and after the event.** Hence, there will not be any significant differences in the temperature and this temperature profile has been used to calculate the altitude profile of m^2 . Following Equation (1) and based on the SABER temperature profile, imager, and MMARIA projected wind profile measurements, we have calculated the altitude profile of m^2 . Figures 7c and 7e are the altitude profiles of m^2 along with the proportional error plotted as horizontal error bar over SABER 1 and 2 locations respectively. Both m^2 profiles have been derived using the same projected wind shown in Figure 7a. It is interesting to note that the temperature profile doesn't show any inversion at the SABER 1 location. However, we can observe the mesospheric inversion layer (MIL) at the

SABER 2 location. The m^2 profile at SABER 2 reveals that a duct region exists in the altitude range
 255 between 85-91 km where positive m^2 is vertically sandwiched between a negative m^2 value (at 91 km)
 and a less positive value (at 85 km). In order to find the nature of the duct layer, we have analyzed the
 contribution of each term of the dispersion relation (Equation 1). The contribution terms in m^2 profiles
 are like ~89.5 % from the buoyancy term (thermal gradient) $\left(\frac{N^2}{\rho^2}\right)$, ~6.5 % from the wind shear term
 $\left(\frac{U'_k}{Hc}\right)$, ~1.9 % from squared of horizontal wavenumber k^2 and ~2.1 % from scale height term $\left(\frac{1}{4H^2}\right)$.
 260 The contribution suggests that the buoyancy term (thermal gradient) dominates in the m^2 profile whereas
 the wind shear doesn't play any significant role. Therefore, the duct layer observed in the MIL region
 at 85-91 km is a *thermal duct* by nature, dominated by the thermal gradient of the MIL which is observed
 merely 1 hour before the appearance of the wave fronts in the south-west region of imager FOV. It is
 worth mentioning that the observed MIL is close to the edge of the horizontal coverage of the airglow
 265 imager and coincide with the path of the propagation of the wave structure (refer to Figures 2-5).

5. Discussion

As discussed above, the multi-wavelength all-sky airglow imager installed at Kühlungsborn, Germany
 can record images at four airglow emissions originating from the MLT region of the Earth's atmosphere.
 270 Our main objective is to combine data from the all-sky imager to investigate the spatial information of
 the waves in the MLT region and corroborate with the 2D horizontally resolved wind field at different
 altitudes using MMARIA. The optical and radio measurements in 2D gives us a unique opportunity to
 investigate intriguing wave events in the MLT region over northern Germany. We have captured a
 front-like wave structure during the all-sky airglow imaging observation on 25 April 2017 at O(¹S), O₂,
 275 Na and OH airglow emission layers. As discussed in the Results section, we captured an upward
 propagating wave structure and it appeared to be very prominent in both O(¹S) and O₂ images
 propagating from south-west to north-east. On the other hand, it is faintly observed in both Na and OH
 images. As the Na airglow is a relatively weaker emission compared to O(¹S) and O₂ airglow, it may
 be the plausible reason for observing faint structure in Na airglow images. Hence, it is expected that
 280 any wave structure observed in that filter may not be prominent due to poor signal-to-noise ratio.
 However, it is well-known that the OH airglow emission is much brighter than O₂ and O(¹S) emissions
 in the MLT region and has been widely used for the investigating of GWs (e.g. Taylor et al., 1995;
 Yamada et al., 2001; Mukherjee, 2003; Li et al., 2005; Yue et al., 2010). Hence, any wave structure
 should be very prominent in the OH airglow images. In fact, clear signatures of wave activities were
 285 observed on other nights in OH airglow images over northern Germany. However, the wave structure,
 on 25 April 2017, can barely be observed in the OH airglow images. The detailed analyses of the
 plausible cause behind the occurrence of this rare event have been carried out and discussed below:

5.1 Reduction in the OH airglow emission intensity

290 As it is mentioned above that the OH airglow emission is normally a strong emission for the investigation of dynamics in the MLT region. However, reduction in the overall density of H atoms and O₃ molecules, that are reacting to form the excited OH molecule, could have led to the weak OH airglow emission on that night. Consequently, the wave structure observed in the OH filter may not appear as prominent as it should be, due to poor signal-to-noise ratio. In order to explore the possibilities, we have
295 carried out comparison of the SABER measured altitude profiles of H atomic, O₃ molecular densities and OH Volume Emission Rate (VER) profiles. The VER profiles (both at 1.6 and 2.0 μm emissions) at SABER 2 measurement location on the night of 25 April 2017 reveal that the thickness of the OH emission layer is ~10.2 km. The SABER measurements indicated that the centroid height of OH airglow emission occurred near 87 km on that night. We have also looked into OH VER profiles for ±2 nights
300 from nearby locations during 20-21 UT (figures not shown). We found that the OH emission layer thickness is similar (10.03 ± 0.6 km). Hence, we believe that the small changes in the thickness will not have any significant impact on the observability of the wave in OH airglow emission layer. In addition, we found that there are no significant differences of the density of H & O₃ and OH VER profiles. Hence, the fact that we observed the faint wave structure in the OH airglow image is not due to the reduction
305 in the overall intensity level of OH airglow emission on that night.

5.2 Cancellation of waves in the OH airglow emission layer

Based on model calculation, Liu and Swenson (2003) reported that for vertically propagating GWs, the amplitude of airglow perturbations observed using ground-based measurements is larger for longer
310 vertical wavelength, due to the smaller cancellation effect within each layer. This cancellation factor was introduced by Swenson and Gardner (1998) for OH airglow to relate the observed vertically-integrated airglow intensity perturbations to the wave amplitudes. This cancellation factor causes a GW that may not be observable in an airglow emission layer, when observed using ground-based airglow instruments, if the vertical wavelength is less than the FWHM. (e.g., Swenson and Gardner, 1998, Liu
315 and Swenson, 2003, Vargas et al, 2007).

Based on the sounding rocket measurements, it has been reported that the OH, Na, O₂ and O(¹S) airglow emission layers are originating in the MLT region with FWHM of 8-10 km (Watanabe et al., 1981; Ogawa et al., 1987; Baker and Stair, 1988; Gobbi et al., 1992; Hedin et al., 2009). On many occasions, these in-situ rocket borne measurements reveal that the FWHM of the O₂ emission layer is
320 more than the one of OH whereas, the FWHM of Na airglow layer is nearly comparable with that of OH and O₂. However, in general, the FWHM of O(¹S) airglow layer is 1 or 2 km less compared to the OH and O₂ airglow emission layers. We have estimated the vertical wavelength of the wave structure from the phase shift of O₂ and O(¹S) airglow emission intensities (Figure 6). From the slopes of the dashed lines, we can get the values of vertical wavelength ranging between 14 and 25 km. On the other
325 hand, we can also calculate the average vertical wavelength using equation (1) (based on SABER and

MMARIA measurements). It turns out to be 9.3 km in O₂ and O(¹S) airglow emission layers (Figure 7e). The difference in the vertical wavelength calculated using two different methods is because of the two instruments that record different scale sizes due to differences in viewing geometries of each technique and the parameters recorded. In addition, from Figure 7e, the average vertical wavelength of the wave structure is calculated to be 11.5 km ($m^2 = 0.3 \times 10^{-6} \text{ m}^2$) in the OH airglow emission layer. Thus, it is clear that the vertical wavelength of the wave structure is longer than the OH emission layer thickness (10.2 km). Therefore, it is unlikely that the faint wave structure observed in the OH airglow images is due to the cancellation of waves in the OH airglow emission layer. It appears that this rare event occurred because of conducive background condition over northern Germany on that night.

335

5.3 Thermal ducting of waves

In order to investigate this interesting and intriguing observation, the derivation of the altitude profiles of m^2 has been carried out over both SABER 1 and 2 measurement locations. Figure 7 suggests the presence of a thermal duct layer (85-91 km) merely 1 hour before the appearance of the wave fronts in the south-west region of imager FOV. In order to demonstrate the event, we have drawn a schematic diagram depicted in Figure 8 (not to scale) from the results of the Figures 6 and 7. It is well-known that the MIL tends to be quite stable for at least for 3-4 hours (e.g., Dao et al., 1995; Meriwether and Gerrard, 2004). However, they can be spatially discontinuous as observed from SABER 1 and 2 temperature profiles. The theory of GW propagation predicts that the waves should reflect if the vertical wavenumber has an imaginary component. Hence, if $m^2 < 0$, then the transmitted wave will die out because of its amplitude decreases exponentially. It creates a region of evanescence in which the wave cannot vertically propagate and is reflected (Isler et al., 1997; Fritts and Yuan, 1989; Hines and Tarasick, 1994; Huang et al., 2010). Figure 8 shows how the wave structure freely propagated in three dimensions and it encountered the bottom of the duct layer at 85 km. The m^2 profile indicates the existence of a weak evanescent region at 85 km. Therefore, the duct layer observed in the present case is a “leaky duct” from the bottom side. Thus, only a part of the wave energy could penetrate through the bottom of the duct layer. Thus, a few wave fronts travelling from south-west to north-east could partially enter from the bottom of the duct layer in the imager FOV in Na and OH airglow emission regime. The other part of the wave structure, which did not encounter the duct layer, freely propagated and entered in the FOV of the imager at O(¹S) and O₂ airglow emission layers (demonstrated in the Figure 8) situated at higher altitudes. This is supported by the phase progression analyses shown in Figure 6, wherein we captured the wave structure as ‘upward propagating wave’ in O(¹S) and O₂ airglow emission layers on that night. However, the intrinsic phase of the wave structure in the Na airglow emission layer indicates that the vertical phase progression is different as compared to the O(¹S) and O₂ airglow emission layers. This difference in the vertical phase progression is caused by the combined effect of wave structure within and beyond the ducted layer as the airglow imager captured vertically integrated Na airglow emission intensity peaked at 91 km with a FWHM of ~10 km (Mende et al.,

360

1993). On the other hand, the intensity in the OH airglow images appeared so faint that the determination of the phase progression of the waves in these images becomes practically impossible.

365 The multi-instrument observation gave us the opportunity to investigate the plausible physical process behind this intriguing and rare phenomenon where the thermally leaky ducted layer partially inhibited the wave progression in the OH airglow emission layer. **As a result, the OH airglow images exhibit as the faint wave front on the night of 25 April 2017 over northern Germany.**

370 **6. Summary and Conclusion**

A case study of a wave event observed on the night of 25 April 2017 over northern Germany using optical and radar instruments is reported here. The multi-wavelength all-sky airglow imager recorded an upward propagating wave structure at multiple airglow altitudes in the MLT region. It appeared to be very prominent in O(¹S) and O₂ airglow images. However, the same wave structure is observed to be faint in both Na and OH airglow images, despite OH being one of the strong airglow emissions. In order to investigate this intriguing phenomenon, the derivation of the altitude profiles of m^2 was carried out using collocated MMARIA altitude profile of the horizontally resolved wind field and a SABER temperature profile close to the event location. The obtained m^2 profiles indicates the presence of a thermal duct layer in the altitude range of 85-91 km in the south-west region of Kühlungsborn. **The wave structure entered partially from the bottom of the leaky duct layer (at 85 km) and travelled from south-west to north-east (in the imager FOV) in the OH airglow emission layer.** Whereas, the other part of the wave structure, which did not encounter the duct layer, freely propagated and entered in the FOV of the imager at O(¹S) and O₂ airglow emission layers resulting the weak wave structure observed in the OH airglow images on that night over northern Germany.

385

7. Code/Data availability

The SABER temperature data is available in <http://saber.gats-inc.com>. The airglow imager and MMARIA wind radar data are available at <https://doi.org/10.5281/zenodo.4925828>.

390 **8. Author contribution**

SS conceived the theme, devised the data processing methods, carried out data analyses, and wrote the manuscript. GS, JLC, SMS helped in conceiving the theme and contributed in writing the manuscript. SM helped in carrying out the data analyses and contributed in writing the manuscript. CJ, MGM, JMR contributed in writing the manuscript.

395

9. Competing interests

Competing interests: Gunter Stober is one of the topical editors and Christoph Jacobi is one of the Editors-in-Chief. The authors declare that they have no conflict of interest.

Acknowledgements

400 S. Sarkhel acknowledges the Leibniz Institute of Atmospheric Physics for hosting him during the
summer of 2017. S. Mondal acknowledges the fellowship from the Ministry of Education, Government
of India for carrying out this research work. S. Sarkhel thanks Amitava Guharay, Fazlul I. Laskar, and
Jean-Pierre St-Maurice for useful discussion. The help from Govind Gaur in calculating the uncertainty
in m^2 is duly acknowledged. This work is partially supported by the WATILA project (SAW-2-15-IAP-
405 5 383) funded by Leibniz-Gemeinschaft. Funding for S.M. Smith was provided by NSF award AGS-
1909237. G. Stober receives support from University Bern, the Oeschger Center for Climate Change
Research (OCCR) and by the ARISE2/ARISE-IA project (www.ARISE-project.eu) from the European
Community's Horizon 2020 programme. This work is also supported by Ministry of Education,
Government of India.

410

References:

- Amante, C. and Eakins, B.: ETOPO1 1 Arc-Minute Global Relief Model: Procedures, Data Sources and Analysis. NOAA Technical Memo-randum NESDIS NGDC-24. National Geophysical Data Center, NOAA, <https://doi.org/doi:10.7289/V5C8276M>, 2009.
- 415 Bageston, J. V., Wrasse, C. M., Batista, P. P., Hibbins, R. E., Fritts, D. C., Gobbi, D., & Andrioli, V. F.: Observation of a mesospheric front in a thermal-doppler duct over King George Island, Antarctica, *Atmos. Chem. Phys.*, 11, 12137–12147, doi:10.5194/acp-11-12137-2011, 2011.
- 420 Becker, E., & Vadas, S. L.: Secondary Gravity Waves in the Winter Mesosphere: Results From a High-Resolution Global Circulation Model, *Journal of Geophysical Research: Atmospheres*, 123(5), 2605–2627, doi:10.1002/2017jd027460, 2018.
- 425 Chamberlain, J. W., *Physics of the Aurora and Airglow*, Academic Press, p-429, 1961.
- Chimonas, G., & Hines, C. O.: Doppler ducting of atmospheric gravity waves, *Journal of Geophysical Research*, 91(D1), 1219, doi:10.1029/jd091id01p01219, 1986.
- 430 Dao, P. D., R. Farley, X. Tao, and C. S. Gardner, Lidar observations of the temperature profile between 25 and 103 km: Evidence of tidal perturbation, *Geophys. Res. Lett.*, 22, 2825–2828, doi: 10.1029/95GL02950, 1995.
- Dewan, E. M., and Picard, R. H.: Mesospheric bores, *J. Geophys. Res.*, 103(D6), 6295–6305, doi:10.1029/97JD02498, 1998.
- 435 Dewan, E. M., and Picard, R. H.: On the origin of mesospheric bores, *J. Geophys. Res.*, 106(D3), 2921–2927. doi:10.1029/2000JD900697, 2001.
- 440 Baker, D. J. and Stair, Jr A. T.: Rocket measurements of the altitude distributions of the hydroxyl airglow, *Physica Scripta*, 37, 611-622, 1988.
- Fritts, D. C. and Alexander, M. J.: Gravity wave dynamics and effects in the middle atmosphere, *Reviews of Geophysics*, 41(1), 1–64, doi: 10.1029/2001RG000106, 2003.
- 445 Fritts, D. C. and Yuan, L.: An analysis of gravity wave ducting in the atmosphere: Eckart’s resonances in thermal and Doppler ducts, *Journal of Geophysical Research*, 94(D15), 18455, doi: 10.1029/jd094id15p18455, 1989.
- 450 Garcia, F. J., Taylor, M. J. and Kelley, M. C.: Two-dimensional spectral analysis of mesospheric airglow image data, *Applied Optics*, 36(29), 7374-7385, doi: 10.1364/AO.36.007374, 1997.
- García-Comas, M., et al.: Errors in Sounding of the Atmosphere using Broadband Emission Radiometry (SABER) kinetic temperature caused by non-local-thermodynamic-equilibrium model parameters, *J. Geophys. Res.*, 113, D24106, doi:10.1029/2008JD010105, 2008.
- 455 Gobbi, G., H. Takahashi, B. R., Clemesha, Batista, P. P.: Equatorial atomic oxygen profiles derived from rocket observations of OI 557.7 nm airglow emission, *Planetary and Space Science*, 40, 775-781, [https://doi.org/10.1016/0032-0633\(92\)90106-X](https://doi.org/10.1016/0032-0633(92)90106-X), 1992.
- 460 Heale, C. J., Bossert, K., Vadas, S.L., Hoffmann, L., Dörnbrack, A., Stober, G., Snively, J. B., & Jacobi, Ch.: Secondary gravity waves generated by breaking mountain waves over Europe, *J. Geophys. Res: Atmospheres*, 125, e2019JD031662, <https://doi.org/10.1029/2019JD031662>, 2020.

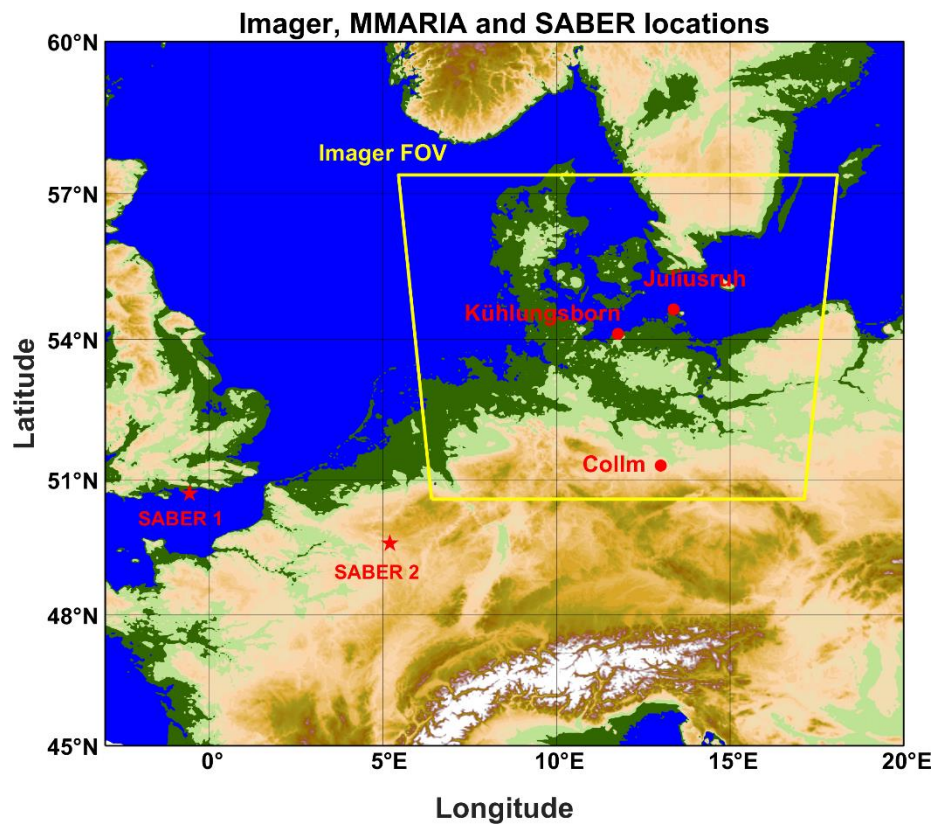
- 465 Hecht, J. H., Walterscheid, R. L., Hickey, M. P., & Franke, S. J.: Climatology and modeling of quasi-monochromatic atmospheric gravity waves observed over Urbana Illinois, *Journal of Geophysical Research: Atmospheres*, 106(D6), 5181–5195. doi:10.1029/2000jd900722, 2001.
- 470 Hedin, J., Gumbel, J., Stegman, J., and Witt, G.: Use of O₂ airglow for calibrating direct atomic oxygen measurements from sounding rockets, *Atmos. Meas. Tech.*, 2, 801–812, <https://doi.org/10.5194/amt-2-801-2009>, 2009.
- Hines, C. O., & Tarasick, D. W.: Airglow response to vertically standing gravity waves, *Geophysical Research Letters*, 21(24), 2729–2732, doi:10.1029/94gl01137, 1994.
- 475 Hoffmann, P., Becker, E., Singer, W., & Placke, M.: Seasonal variation of mesospheric waves at northern middle and high latitudes, *Journal of Atmospheric and Solar-Terrestrial Physics*, 72, 1068–1079, <https://doi.org/10.1016/j.jastp.2010.07.002>, 2010.
- 480 Hozumi, Y., Saito, A., Sakanoi, T., Yamazaki, A., Hosokawa, K., & Nakamura, T.: Geographical and seasonal variability of mesospheric bores observed from the International Space Station, *Journal of Geophysical Research: Space Physics*, 124, 3775–3785, doi: 10.1029/2019JA026635, 2019.
- 485 Huang, K. M., Zhang, S. D., & Yi, F.: Reflection and transmission of atmospheric gravity waves in a stably sheared horizontal wind field, *Journal of Geophysical Research*, 115(D16), doi:10.1029/2009jd012687, 2010.
- 490 Isler, J. R., Taylor, M. J. and Fritts, D. C.: Observational evidence of wave ducting and evanescence in the mesosphere, *Journal of Geophysical Research: Atmospheres*, 102(D22), 26301–26313, doi: 10.1029/97jd01783, 1997.
- Jacobi, Ch., Fröhlich, K., Viehweg, C., Stober, G., & Kürschner, D.: Midlatitude mesosphere/lower thermosphere meridional winds and temperatures measured with meteor radar, *Adv. Space Res.*, 39, 1278–1283, <https://doi.org/10.1016/j.asr.2007.01.003>, 2007.
- 495 Lakshmi Narayanan, V., Gurubaran, S., & Emperumal, K.: Nightglow imaging of different types of events, including a mesospheric bore observed on the night of February 15, 2007 from Tirunelveli (8.7°N), *Journal of Atmospheric and Solar-Terrestrial Physics*, 78-79, 70–83, doi:10.1016/j.jastp.2011.07.006, 2012.
- 500 Li, F., Liu, A. Z., Swenson, G. R., Hecht, J. H., and Robinson, W. A.: Observations of gravity wave breakdown into ripples associated with dynamical instabilities, *J. Geophys. Res.*, 110, D09S11, doi:10.1029/2004JD004849, 2005.
- 505 Liu, A. Z., and Swenson, G. R.: A modeling study of O₂ and OH airglow perturbations induced by atmospheric gravity waves, *J. Geophys. Res.*, 108 (D4), 4151, doi:10.1029/2002JD002474, 2003.
- 510 Makhlof, U. B., Picard, R. H., & Winick, J. R.: Photochemical-dynamical modeling of the measured response of airglow to gravity waves: 1. Basic model for OH airglow, *Journal of Geophysical Research*, 100(D6), 11289. doi:10.1029/94jd03327, 1995.
- Medeiros, A. F., Paulino, I., Wrasse, C. M., Fehine, J., Takahashi, H., Bageston, J. V., et al.: Case study of mesospheric front dissipation observed over the northeast of Brazil, *Annales Geophysicae*, 36(2), 311–319, doi:10.5194/angeo-36-311-2018, 2018.
- 515 Mende, S. B., Swenson, G. R., Geller, S. P., Viereck, R. A., Murad, E., & Pike, C. P.: Limb view spectrum of the Earth's airglow, *Journal of Geophysical Research*, 98(A11), 19117–19125, <https://doi.org/10.1029/93JA02282>, 1993.

- 520 Meriwether, J. W., and Gerrard, A. J.: Mesosphere inversion layers and stratosphere temperature enhancements, *Rev. Geophys.*, 42, RG3003, doi:10.1029/2003RG000133, 2004.
- Mondal, S., Srivastava, A., Sarkhel, S., Sunil Krishna, M. V., Rao, Yamini K., Singh, Vir.: Allsky Airglow Imaging Observation from Hanle, Leh Ladakh, India: Image Analyses and First Results, *Advances in Space Research*, 64, 1926-1939, doi:10.1016/j.asr.2019.05.047, 2019.
- 525 Mondal, S., Sivakandan, M., Sarkhel, S., Sunil Krishna, M.V., Mlynczak, M. G., Russell, J. M. III, Bharti, G.: A case study of a thermally ducted undular mesospheric bore accompanied by ripples over the western Himalayan region, *Adv. Space Res.*, 68, 1425-1440, doi: 10.1016/j.asr.2021.03.026, 2021.
- 530 Mukherjee, G. K.: The signature of short period gravity waves imaged in OI 557.7 nm and near infrared OH nightglow emissions over Panhala, *J. Atmos. Sol. Terr. Phys.*, 65, 1329-1335, 2003.
- Nappo, C. J.: An introduction to atmospheric gravity waves, Amsterdam: Academic Press, International geophysics series, 85, ISBN 0125140827, 2002.
- 535 National Imagery and Mapping Agency: Department of Defense World Geodetic System 1984, its definition and relationships with local geodetic systems, Tech. Rep. TR8350.2, National Imagery and Mapping Agency, St. Louis, MO, USA, http://earth-info.nga.mil/GandG/publications/tr8350.2/tr8350_2.html, 2000.
- 540 Ogawa, T., Iwagami, N., Nakamura, M., Takano, M., Tanabe, H., Takechi, A., Miyashita, A., Suzuki, K.: A simultaneous observation of the height profiles of the night airglow OI 5577 A, O₂ Herzberg and atmospheric bands, *J. Geomag. Geoelectr.*, 39, 211-228, 1987.
- 545 Sarkhel, S., Sekar, R., Chakrabarty, D., & Guharay, A.: Investigation on mesospheric gravity waves over Indian low latitude stations using sodium airglow observations and a few case studies based on thermal and wind structures, *Journal of Atmospheric and Solar-Terrestrial Physics*, 86, 41–50, <https://doi.org/10.1016/j.jastp.2012.06.008>, 2012.
- 550 Sarkhel, S., Mathews, J. D., Raizada, S., Sekar, R., Chakrabarty, D., Guharay, A, Jee G, Kim J-H, Kerr R. B., Ramkumar, G., Sridharan, S., Wu, Q., Mlynczak, M. G., Russell, J. M. III.: A case study on occurrence of an unusual structure in the sodium layer over Gadanki, India. *Earth Planets Space*, 67., <https://doi.org/10.1186/s40623-015-0183-5>, 2015a.
- 555 Sarkhel, S., Mathews, J. D., Raizada, S., Sekar, R., Chakrabarty, D., Guharay, A, Jee G, Kim J-H, Kerr R. B., Ramkumar, G., Sridharan, S., Wu, Q., Mlynczak, M. G., Russell, J. M. III.: Erratum to: A case study on occurrence of an unusual structure in the sodium layer over Gadanki, India, *Earth Planets Space*, 67:145, <https://doi.org/10.1186/s40623-015-0276-1>, 2015b.
- 560 Sarkhel, S., Mondal, S., Sekar, R., Chakrabarty, D., & Sridharan, S.: A review on the upper atmospheric sodium observations from India: Insights, *Advances in Space Research*, <https://doi.org/10.1016/j.asr.2019.02.019>, 2019.
- 565 Smith, S. M., Taylor, M. J., Swenson, G. R., She, C.-Y., Hocking, W., Baumgardner, J., & Mendillo, M.: A multidagnostic investigation of the mesospheric bore phenomenon, *Journal of Geophysical Research: Space Physics*, 108(A2), 1083. doi:10.1029/2002ja009500, 2003.
- 570 Smith, S. M., Friedman, J., Raizada, S., Tepley, C., Baumgardner, J., & Mendillo, M.: Evidence of mesospheric bore formation from a breaking gravity wave event: simultaneous imaging and lidar measurements, *Journal of Atmospheric and Solar-Terrestrial Physics*, 67(4), 345–356, doi:10.1016/j.jastp.2004.11.008, 2005.

- Smith, S. M., Stober, G., Jacobi, C., Chau, J. L., Gerding, M., Mlynczak, M. G., et al.: Characterization of a double mesospheric bore over Europe, *Journal of Geophysical Research: Space Physics*, 122(9), 9738–9750, doi:10.1002/2017ja024225, 2017.
- 575
- Sobral, J. H. A., Takahashi, H., Abdu, M. A., Muralikrishna, P., Sahai, Y., & Zamlutti, C. J.: O(¹S) and O(¹D) quantum yields from rocket measurements of electron densities and 557.7 and 630.0 nm emissions in the nocturnal F-region, *Planetary and Space Science*, 40, 607-619, [https://doi.org/10.1016/0032-0633\(92\)90002-6](https://doi.org/10.1016/0032-0633(92)90002-6), 1992.
- 580
- Stober, G., & Chau, J. L.: A multistatic and multifrequency novel approach for specular meteor radars to improve wind measurements in the MLT region, *Radio Science*, 50(5), 431–442, doi:10.1002/2014rs005591, 2015.
- 585
- Stober, G., Chau, J. L., Vierinen, J., Jacobi, C., & Wilhelm, S.: Retrieving horizontally resolved wind fields using multi-static meteor radar observations, *Atmospheric Measurement Techniques*, 11(8), 4891–4907, doi:10.5194/amt-11-4891-2018, 2018.
- 590
- Stober, G., Kozlovsky, A., Liu, A., Qiao, Z., Tsutsumi, M., Hall, C., Nozawa, S., Lester, M., Belova, E., Kero, J., Espy, P. J., Hibbons, R. E., and Mitchell, N.: Atmospheric tomography using the Nordic Meteor Radar Cluster and Chilean Observation Network De Meteor Radars: network details and 3DVAR retrieval, *Atmos. Meas. Tech. Discuss.*, <https://doi.org/10.5194/amt-2021-124>, in review, 2021.
- 595
- Swenson, G. R., and Gardner, C. S.: Analytical models for the responses of the mesospheric OH* and Na layers to atmospheric gravity waves, *J. Geophys. Res.*, 103, 6271–6294, 1998.
- 600
- Taylor, M. J., Turnbull, D. N. and Lowe, R. P.: Spectrometric and imaging measurements of a spectacular gravity wave event observed during the AOHA-93 Campaign, *Geophysical Research Letters*, 22(20), 2849–2852, doi: 10.1029/95GL02948, 1995.
- 605
- Vadas, S. L., Zhao, J., Chu, X., & Becker, E.: The Excitation of Secondary Gravity Waves from Body Forces: Theory and Observation, *Journal of Geophysical Research: Atmosphere*, doi:10.1029/2017jd027970, 2018.
- 610
- Vargas, F., Swenson, G., Liu, A., and Gobbi, D.: O(¹S), OH, and O₂(b) airglow layer perturbations due to AGWs and their implied effects on the atmosphere, *J. Geophys. Res.*, 112, D14102, doi:10.1029/2006JD007642, 2007.
- Vargas, F., J. L. Chau, H. Charuvil Asokan, M. Gerding.: Mesospheric gravity wave activity estimated via airglow imagery, multistatic meteor radar, and SABER data taken during the SIMONE--2018 campaign, *Atmos. Chem. Phys. Discuss.*, <https://doi.org/10.5194/acp-2020-896>, submitted, 2020.
- 615
- Walterscheid, R. L., Hecht, J. H., Vincent, R., Reid, I., Woihte, J., & Hickey, M. P.: Analysis and interpretation of airglow and radar observations of quasi-monochromatic gravity waves in the upper mesosphere and lower thermosphere over Adelaide, Australia (35°S, 138°E), *Journal of Atmospheric and Solar-Terrestrial Physics*, 61(6), 461–478, doi:10.1016/s1364-6826(99)00002-4, 1999.
- 620
- Watanabe, T., Nakamura, M., and Ogawa, T.: Rocket measurements of O₂ atmospheric and OH Meinel Bands in the airglow, *J. Geophys. Res.*, 86(A7), 5768– 5774, doi:10.1029/JA086iA07p05768, 1981.
- 625
- Yamada, Y., Fukunishi, H., Nakamura, T., & Tsuda, T.: Breaking of small-scale gravity wave and transition to turbulence observed in OH airglow, *Geo-phys. Res. Lett.*, 28 (11), 2153-2156, 2001.

Yue, J., Nakamura, T., She, C.-Y., Weber, M., Lyons, W., and Li, T.: Seasonal and local time variability of ripples from airglow imager observations in US and Japan, *Ann. Geophys.*, 28, 1401–1408, <https://doi.org/10.5194/angeo-28-1401-2010>, 2010.

Figures



630 **Figure 1:** The map of northern Europe where it shows the location of the multi-wavelength airglow imager at Kühlungsborn, MMARIA transmitter stations (Collm and Juliusruh) and receiver stations (Juliusruh and Kühlungsborn). The map has been generated from ETOPO1 1 Arc-Minute Global Relief Model (Amante and Eakins, 2009). The yellow box is the maximum horizontal coverage of the airglow imager in the MLT region. The red asterisks show the SABER temperature measurement locations.

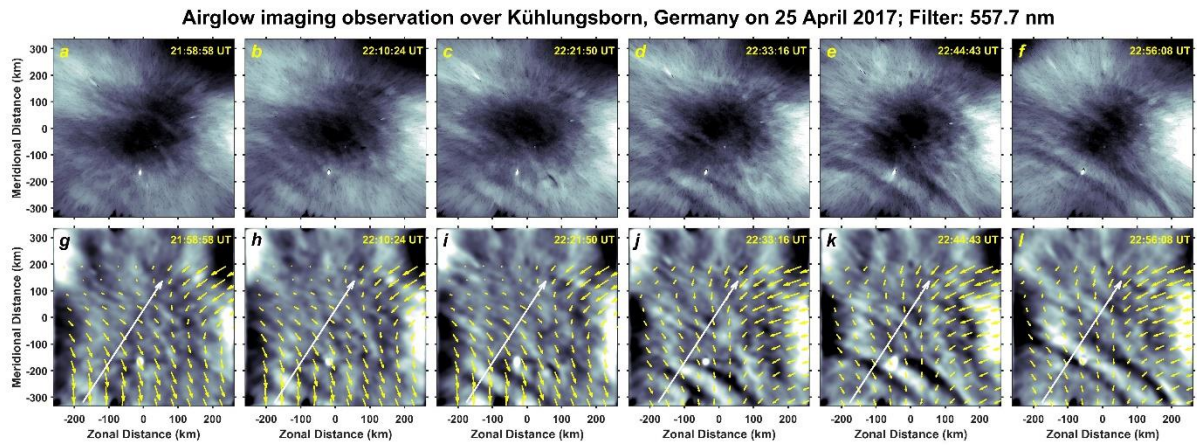


Figure 2: (a-f) Sequence of O(¹S) 557.7 nm airglow images on 25 April 2017 over northern Germany. (g-l) Corresponding 2D FFT filtered images overlaid on horizontal variation of wind-field (yellow arrows) at the emission centroid height (97 km) measured by MMARIA. The white arrow denotes the wave vector.

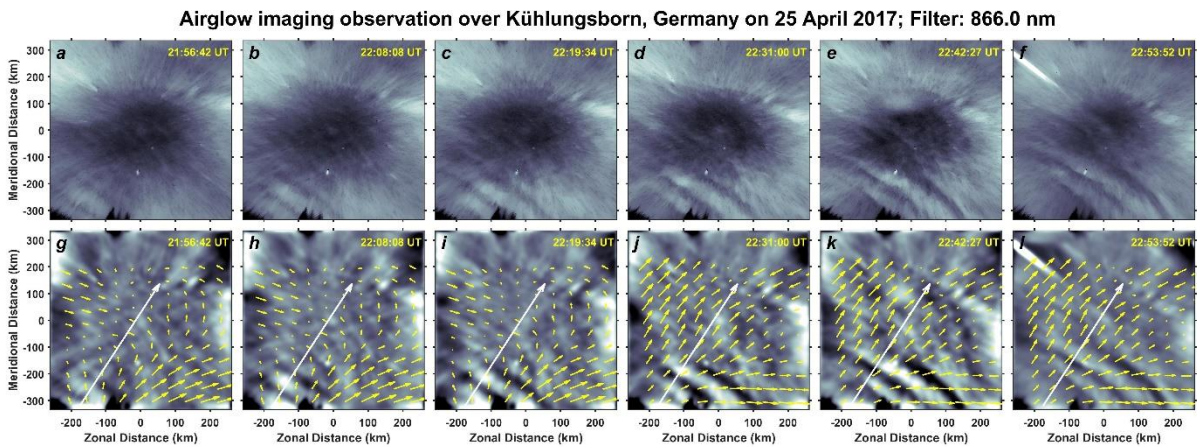


Figure 3: (a-f) Sequence of O₂ 866.0 nm airglow images on 25 April 2017 over northern Germany. (g-l) Corresponding 2D FFT filtered images overlaid on horizontal variation of wind-field (yellow arrows) at the emission centroid height (94 km) measured by MMARIA. The white arrow denotes the wave vector.

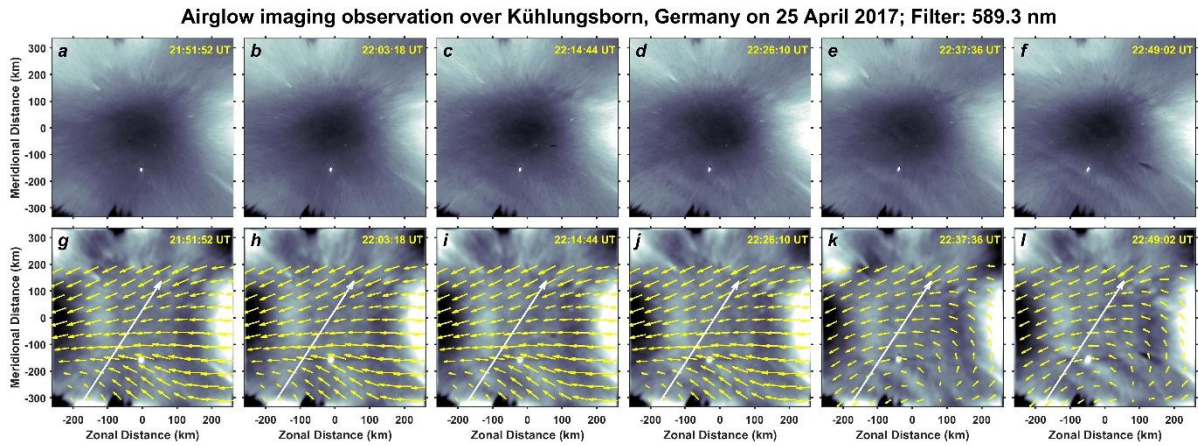


Figure 4: (a-f) Sequence of Na 589.3 nm airglow images on 25 April 2017 over northern Germany. (g-l) Corresponding 2D FFT filtered images overlaid on horizontal variation of wind-field (yellow arrows) at the emission centroid height (91 km) measured by MMARIA. The white arrow denotes the wave vector.

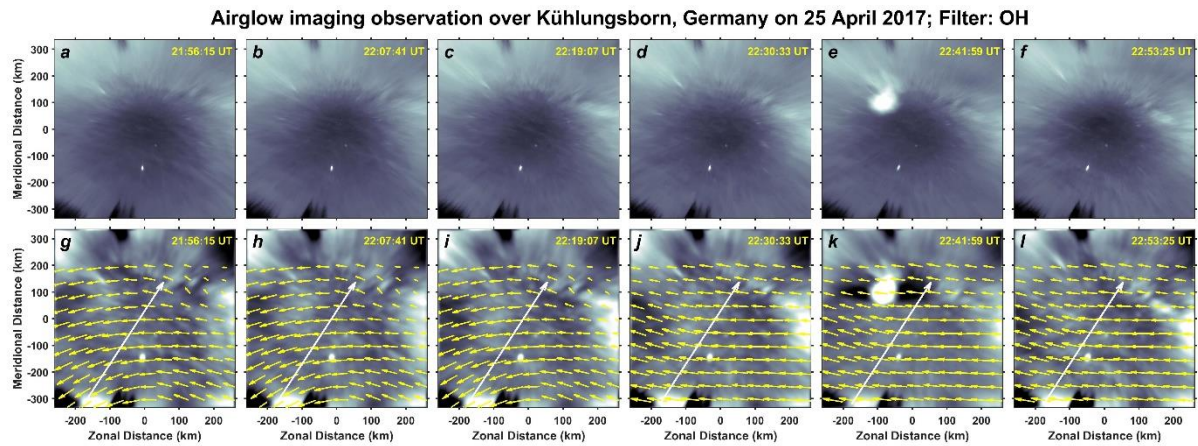


Figure 5: (a-f) Sequence of OH airglow images on 25 April 2017 over northern Germany. (g-l) Corresponding 2D FFT filtered images overlaid on horizontal variation of wind-field (yellow arrows) at the emission centroid height (86 km) measured by MMARIA. The white arrow denotes the wave vector.

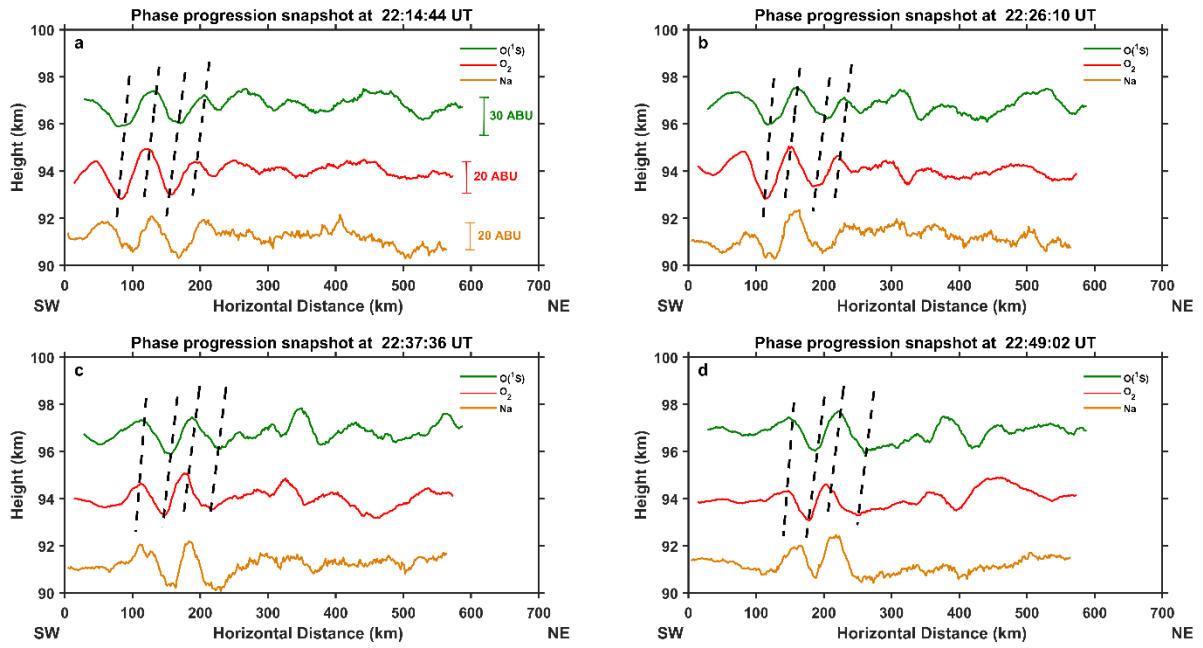


Figure 6: (a-d) The green, red and orange solid lines in each subplot depict the wind shear corrected intensity variation of $O(^1S)$, O_2 and Na airglow emissions respectively along their line of propagation. The slices have also been horizontally shifted using the intrinsic horizontal wave speed in order to make a quasi-simultaneous “snapshot” of the vertical structure of the wave field. The slices have been separated vertically in order to represent the relative vertical separations of the emission layers in the MLT region. The emission brightness is given in arbitrary brightness units (ABU) in panel (a) and refers to all four panels.

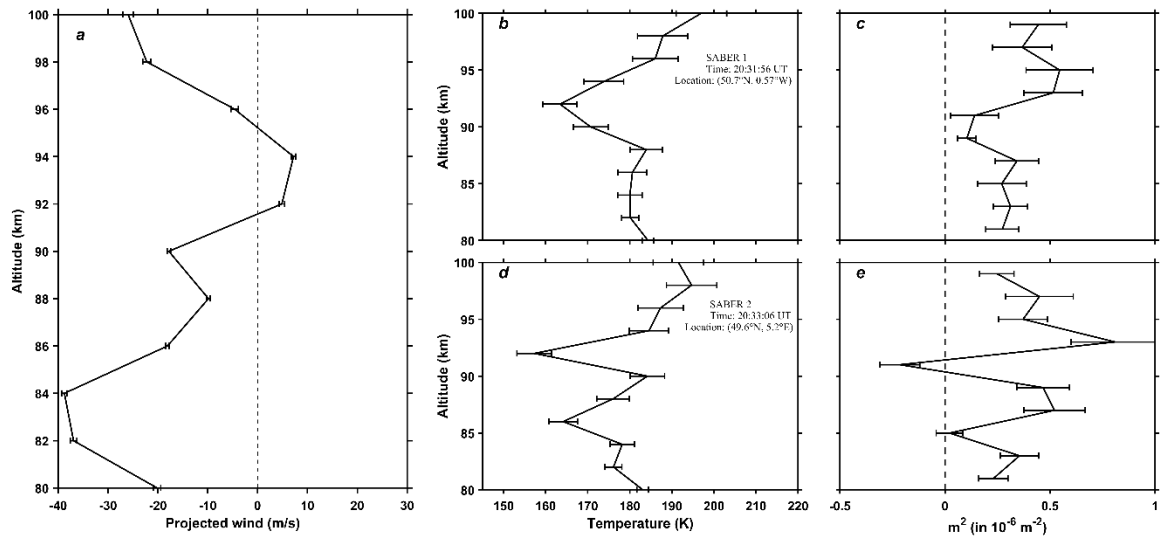
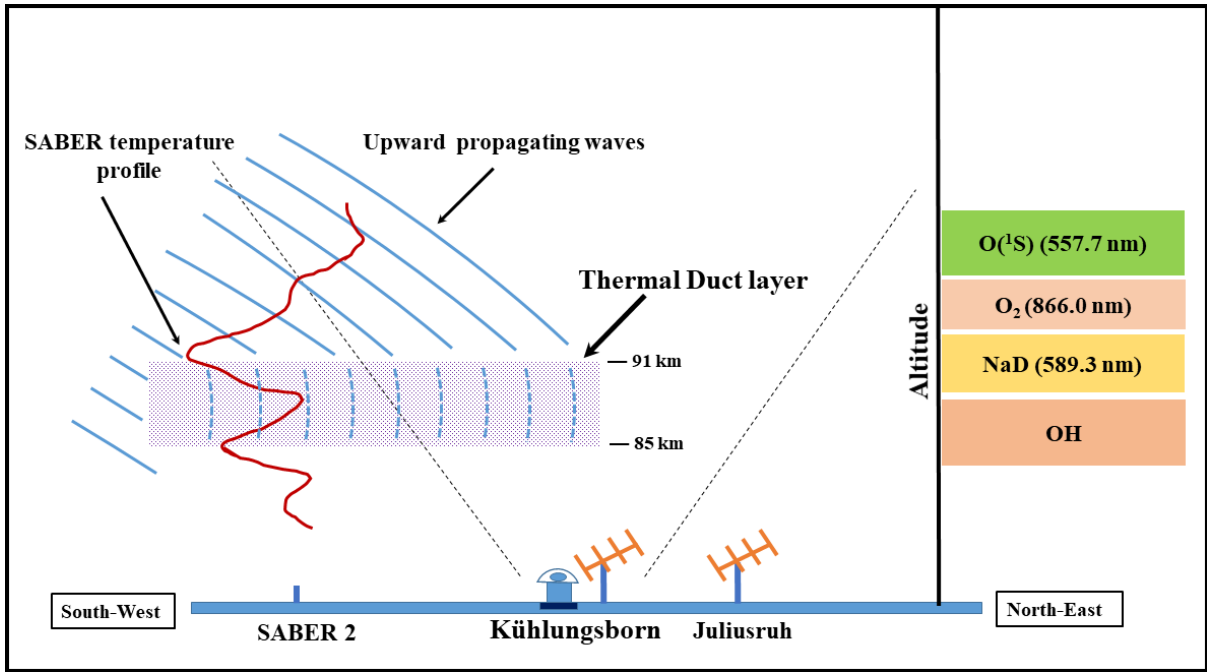


Figure 7: (a) The altitude profile of projected horizontal wind along the wave vector measured during 21:30 - 22:30 UT. (b-c) The altitude profiles of SABER temperature along with measurement uncertainty plotted as horizontal error bar over SABER 1&2 locations respectively. (d-e) The altitude profiles of m^2 derived using the Equation (1) along with the proportional error plotted as horizontal error bar over SABER 1&2 locations respectively.

665



670 **Figure 8:** Schematic diagram of ducted wave fronts in OH and Na airglow emission layers over northern Germany on 25 April 2017.