

Snow cover variability and trend over Hindu Kush Himalayan region using MODIS and SRTM data

Nirasindhu Desinayak¹, Anup K. Prasad^{1,*}, Hesham El-Askary^{2,3}, Menas Kafatos², Ghassem R. Asrar³

¹Photogeology and Image Processing Laboratory, Department of Applied Geology, Indian Institute of Technology (Indian School of Mines), Dhanbad –826004, India

²Center of Excellence in Earth Systems Modeling and Observations, Schmid College of Science and Technology, Chapman University, 452 N. Glassell, Orange, CA 92866, USA

³Department of Environmental Sciences, Faculty of Science, Alexandria University, Moharem Bek, Alexandria 21522, Egypt

⁴Universities Space Research Association, 7178 Columbia Gateway Drive, Columbia, MD 21046, USA

Correspondence to: Anup K. Prasad (anup@iitism.ac.in)

Abstract. Snow cover changes has a direct bearing on the regional and global energy and water cycles, and the change in Earth's climate conditions. We studied the relatively long-term (2000-2017) altitudinal spatio-temporal changes in the coverage of snow and glaciers in one of the world's largest mountainous regions, the Hindu Kush Himalayan (HKH) region, including Tibet using remote sensing data (5km grid resolution) from the Moderate Resolution Imaging Spectroradiometer (MODIS) on Terra satellite. This dataset provided a unique opportunity to study zonal and hypsographic changes in the intra-annual (accumulating season and melting season) and inter-annual variations of snow and glacial cover over the HKH region. The zonal and altitudinal (hypsographic) analyses were carried out for melting-season and accumulating-season. The altitude-wise linear trend analysis (Pearson's) of snow cover, shown as a hypsographic curve, clearly indicates a major decline in snow cover (average of 5% or more, at 100m interval aggregates) between 4000-4500m and 5500-6000m altitudes, which is consistent with the median trend (Theil-Sen, TS) and the monotonic trend (Mann-Kendall statistics, MK) analysis. This analysis also revealed the regions and altitudes where major and statistically significant increase (10 to 30%) or decrease (-10 to -30%) in snow cover are identified. The extrapolation of the altitude-wise linear trend shows that it may take between ~74 to 7900 year for 3001-6000m and 6000-7000m altitude zones respectively, for mean snow cover to decline approximately 25% in the HKH. More detailed analysis based on longer observational records and model simulations is warranted to better understand the underlying factors, processes and feedbacks that affect the dynamic of snow cover in HKH. These preliminary results suggest a need for continued monitoring of this highly sensitive region to climate variability and change that depends on snow as a major source of freshwater for all human activities.

1 Introduction

Understanding the impact of snow cover variability with respect to altitude and temperature in the Hindu Kush Himalayan region (HKH) (Immerzeel, van Beek, and Bierkens 2010; Shrestha et al. 2015) is of great importance for regional water availability and understanding of climate change in this highly populated region of the world. The meltwater from snow and

Deleted: ³Universities

Deleted: condition The study of

Deleted: (spatial and

Deleted: , 2000-2017)

Deleted: region

Deleted: have been studied

Deleted: (at 5km grid resolution). Terra

Deleted: growing

Deleted: (2000-2017).

Deleted: indicate

Deleted: The

Deleted: (

Deleted:)

Deleted: region, assuming no-change in other parameters)

ice contribute to all three rivers (Indus, Ganga, and Brahmaputra), with the highest meltwater fraction in the Indus and the lowest in the Ganga (Bookhagen and Burbank 2010; Immerzeel et al. 2010; Siderius et al. 2013). The HKH region is projected to show a substantial loss of glacial mass and area in the coming decades (Bolch et al. 2012). The snow cover and glaciers of the high-altitude regions of HKH, including Tibet, are likely to be one of the most affected by the projected rise in global temperatures by about 1–2°C on an average in this decade, which could be significantly higher (reaching 4–5°C) in mountainous terrains (Bolch et al. 2012; Prasad et al. 2009; Shrestha et al. 1999a). The assessment of glacier shrinkage over high mountain regions of Himalaya and Tibetan Plateau (1960 to 2010), based on a 0.5° grid resolution published data on glacier shrinkage, shows large uncertainties in the rate of shrinkage due to various factors (Cogley 2016) such as rate of snowfall, accumulation and melt.

Studies related to elevation dependency of climate changes recommends for further research into this important aspect (Chen et al. 2021). Using vegetation data and derived parameters, Chen et al. 2021 investigated the elevation dependency of climate change in the Arctic mountains spanning five main Arctic mountain regions. Except for one exception, the study discovered significant elevation dependency of vegetation phenology using moderate resolution AVHRR (Advanced Very High Resolution Radiometer) time series from 1985 to 2013. The study found that the start of the growing season (SOS), the end of the growing season (EOS), and the length of the growing season (GSL) all changed more at higher elevations.

Snow cover variability is considered as a direct indicator of regional as well as global climate change in the terrestrial domain (Frei et al. 2012; Shrestha et al. 2015). Snow cover, as well as the change of its contribution to surface albedo, are listed as Essential Climate Variables (ECV) by the Global Climate Observing System (GCOS). Long-term changes in the thinly snow-covered areas, especially in the mountainous region, affect the albedo and the global radiation budget. GCOS emphasizes that the study of snow cover changes is one of the priority areas that can be achieved using long term satellite observations, especially in remote areas not accessible to any other types of measurement and monitoring. Snow cover fluctuations in HKH regions are highly variable temporally because of various types of controlling factors including topographic effects, glacier dynamics, various types of geomorphic parameters (Shrestha et al. 2015), and as of late, due to anthropogenic emissions of soot and other air pollutants (Gautam et al. 2013; Kang et al. 2019; Prasad et al. 2011). Data from CALIPSO (vertical profiles), MODIS and photographs taken from aircrafts show the impact of dust storms and anthropogenic pollution on the snow cover in the foothill regions reaching up to 4–6 km altitudes (Prasad et al. 2011). Data from Global MODIS snow products, known as the climate-modeling grid (CMG) products at relatively coarser temporal and spatial resolution (5km, monthly, (Hall, Riggs, and Salomonson 2006)) presents a relatively rapid quantitative analysis of seasonal variability, altitude-wise variability, and temporal trends (spatial and altitude-wise) over the Himalayan region.

1.1 Regional warming and decrease in snow cover

The Earth's mean temperature has increased by 0.85 ± 0.2 °C from 1880 to 2012 (Pachauri 2014). The temperature trends in Nepal (central Himalayas) for the period of 1971–1994 show continuous warming at an average rate of 0.06 °C/year varying

spatially and seasonally (Shrestha et al. 1999b). In contrast, the global average surface temperature rise of the last century was
80 $0.6 \pm 0.2 \text{ }^\circ\text{C}$ (IPCC, 2007). Regional warming is affecting the mountain regions' hydrology due to accelerated cryosphere
thawing (Tang and Wang 2013). Many glacier and snow-covered areas are reportedly decreasing around the world, thereby
making the glaciers one of the fastest-changing landforms in the world. Snow cover anomaly over the Himalayan region is of
the opposite sign to that over northern Eurasia (Bamzai and Shukla 1999). The comparative assessment of the Himalayan and
Eurasian regions shows that the northernmost regions of both continents are mostly snow-covered during winter and exhibit
85 minimal interannual variability. Eurasian snow cover was high only for one year, 1985, and low for three years, 1975, 1989,
and 1990 (Bamzai and Shukla 1999).

By 2080, the mean warming over India is projected to be $3.3\text{-}4.8^\circ\text{C}$ higher relative to pre-industrial times (Chaturvedi et al.
2012). Prasad et al., 2009 reported statistically significant mean month-to-month warming (up to $0.048\pm 0.026^\circ\text{C}/\text{year}$) of the
mid-troposphere that is the near-surface atmosphere over the high-altitude Himalayas and Tibetan Plateau. Thus, 2-3 times
90 higher warming trend (positive and statistically significant) was observed from December to May (accumulation period of
snow) compared to the mean positive annual warming trend over the Himalayas ($0.016\pm 0.005^\circ\text{C}/\text{year}$) and Tibetan Plateau
($0.008\pm 0.006^\circ\text{C}/\text{year}$). The Himalayan and Tibetan Plateau Glacier during this period shows a substantial decrease in snow
cover and an extensive glacial retreat (Prasad and Singh 2007). Recent studies had elaborated on the rapid warming and climate
change over the HKH region (You et al. 2017). The effect of cloud amount and level on the surface temperature and diurnal
95 temperature range have been studied by (Duan and Wu 2006) to explain the warming trend over the Tibetan Plateau.

1.2 Seasonal changes in snow cover

The snow-covered area (SCA), derived from MODIS observations, over the Tibetan plateau, shows not only a decline in the
coverage over the period 2003-2010 but also a decreasing tendency in the persistent SCA (SCA > 350 days). It is also marked
by the increase in temperature ($0.09 \text{ }^\circ\text{C}/\text{year}$) and precipitation ($0.26 \text{ mm}/\text{year}$). However, a slightly increasing tendency was
100 also observed in the maximum SCA over the study area (Wang et al. 2015). The seasonal snow cover distribution over Bhutan
shows maximum monthly mean snow cover in February and minimum snow cover in July (Gurung et al. 2011). The time
series of QuikSCAT radar observations reported by Panday et al., 2011 indicate the beginning of melt onset in late March to
early April at elevations of $\sim 4000\text{m}$, and a delay of approximately one month at higher elevations ($>5500\text{m}$). Freezing begins
at the highest elevations ($>5500\text{m}$) around late September and later on with decreasing elevation, with lower elevations (3500-
105 4000m) experiencing freezing around mid-October (Panday et al. 2011). Using RADARSAT-2 C-band SAR images and
mapping of seasonal variation of polarised fraction (PF), the multitemporal snow cover mapping was carried out over the
Manali-Dhundi region, western Hindu-Kush Himalayas, Himachal Pradesh (Muhuri et al. 2018).

Over the Tibetan Plateau, the minimum snow cover area occurs from July to August, and the SCA increases rapidly from
September, reaching the maximum in March. On average, years 2002, 2005, and 2008 received the largest amount of snow,
110 whereas, in 2001, 2003, 2007, and 2010 received the smallest amount of snow (Duo et al. 2014). The mid-northern hemisphere,

Deleted: in

Deleted: (Duo et al., 2014).

especially over [the](#) Tibetan Plateau, shows a decrease in the number of snow-covered days. Persistent snow was reported to be present in the areas of DEM \geq 4500m, indirectly indicating that the area of persistent snow has decreased over Tibetan Plateau below 4500m ([Wang et al. 2015](#)).

Deleted: (W. Wang et al., 2015)

1.3 Temporal trend of snow cover

Recent studies of temporal trend analysis of snow cover across the Himalayas, and the Tibetan plateau, show a considerable variation. For instance, a significant negative snow cover trend was reported in the upper Indus basins during the winter for the other seasons. The glaciers across the Himalaya were found retreating at a rate of 15.5 ± 11.8 m year⁻¹ and have lost an overall area of 13.6 ± 7.9 % from the last four decades ([Immerzeel 2008; Pratibha and Kulkarni 2018](#)). In recent studies, a conspicuous variation in the trend from west to east over the HKH has been observed in recent studies. The annual melting rate is conservatively estimated at 1% of the total ice reserve ([Immerzeel 2008](#)).

Deleted: (W. Immerzeel, 2008; Pratibha & Kulkarni, 2018). A

Deleted: (W. Immerzeel, 2008).

1.4 Changes in snow cover with altitude

Recent studies indicate that the trend of snow cover also shows large variations with altitude. For instance, using satellite data [Rikiishi & Nakasato \(2006\)](#) found that the mean annual snow cover area in the Himalaya and the Tibetan Plateau has decreased by ~ 1 % yr⁻¹ during 1966–2001. The rate of decrease is the largest (1.6%) at the lowest elevations (0–500m). On the other hand, the length of the snow-cover season is declining at all elevations, with the highest rate of decline [occurring](#) in the 4000–6000 m altitude range. On the Tibetan Plateau (4000–6000m), the length of snow cover season has decreased by 23 days, and the end date for snow cover has advanced by 41 days during 35 years ([Rikiishi and Nakasato 2006](#)). A systematic relatively long term study of selected 19 glaciers in the Chandra-Bhaga basin, Himachal Pradesh (1980–2007) revealed that the Snow Line Altitude (SLA) increased from 5009 ± 61 m to 5401 ± 21 m during this period ([Pandey, Kulkarni, and Venkataraman 2012](#)). According to CMIP5 models, snowmelt is projected to occur earlier, while the ice melt component is expected to increase, with considerable ice thinning, and snow cover may disappear below 4000m altitude by the end of the 21st century ([Soncini et al. 2015](#)).

Deleted: Rikiishi & Nakasato (2006)

Deleted: (Rikiishi & Nakasato, 2006). A systematic

Deleted: (Pandey et al., 2012).

Deleted: (Soncini et al., 2015)

1.5 Reported analysis of MODIS snow cover data

One of the most useful products for snow cover analysis is the MOD10 snow product developed by the MODIS science team under NASA sponsorship and archived/distributed by the National Snow and Ice Data Center (NSIDC) (Hall and Riggs 2007; Hall et al. 2006). Several previous studies have evaluated the performance of these snow products based on field measurements and have been reporting less than 10% error for the snow presence (Hall and Riggs 2007) and 10% positive bias for the albedo product (Tang et al. 2013). Recent studies show that the MODIS snow cover product overestimates the snow cover areas for the Mount Everest region with absolute error ranging from 20.1% to 55.7%, whereas the improved algorithm estimates the snow cover for the HKH region with an absolute accuracy of greater than 90% (Tang et al. 2012). The cloud cover and

150 topographic shading in the mountainous regions are known to be the major factors affecting the accuracy of snow cover products (Muhuri et al. 2021). Parajka et al. (2010) developed and validated a regional snow-line method (SNOWL) for estimating snow cover from MODIS daily product, especially during cloudy conditions (up to 90%) over Austria. The methodology provided robust estimates of snow cover over a range of cloudy conditions (10%-90%) for snow-line mapping. Based on MODIS data, Wang and Xie, (2009) proposed a snow cover index (SCI) that can quantify snow cover duration and extent. The SCI analysis for Tianshan Mountains, the least snow cover in the six hydrologic years was reported in August 2005, which affected the perennial snow/glacier cover extent of 2380 km² area with an elevation of more than 4000m.

155 The key to understanding the connection between the variation of snow cover and global climate change, especially in the mountainous regions, is the analysis of relatively long term MODIS snow cover data (Wang and Xie, 2009). As the effect of regional warming increases with altitude, understanding the snow cover change with altitude is equally important. Therefore, one of the primary objectives of this current study is to create hypsographic curves to understand the seasonal distribution (snow accumulation and melting season) as well as the temporal trend of snow-covered regions with altitude over the HKH region, in addition to the detailed zonal analysis using long-term MODIS derived snow cover product. The study area comprises of the entire HKH region covering eight countries, namely Afghanistan, Bangladesh, Bhutan, China, India, Myanmar, Nepal, and Pakistan (www.icimod.org).

Deleted: The key to understanding the connection between the variation of snow cover and global climate change, especially in the mountainous regions, is the analysis of long term MODIS snow cover data (Wang and Xie, 2009)

165 2 Data Sources and Methodology

2.1 MODIS Snow Cover

The NASA National Snow and Ice Data Center (NSIDC) Distributed Active Archive Center (DAAC) provides snow cover related data since the launch of the Moderate Resolution Imaging Spectroradiometer (MODIS) onboard *Terra*. In this study, snow cover derived from MODIS sensor onboard *Terra* at a spatial resolution of 5 km (in the gridded form) and as monthly (MOD10CM) composite (version 6) were used to analyze the spatial, temporal as well as attitude-wise variation of snow cover. The snow cover detection and snow cover fraction are based on the Normalized Difference Snow Index (NDSI) algorithm (Hall & Riggs, 2007; Salomonson & Appel, 2004), taking advantage of the contrasting reflectance of snow in the visible and one shortwave infrared bands. The snow albedo is estimated using a radiative transfer model (Klein and Barnett 2003). Several previous studies have evaluated the performance of these snow products compared to field measurements and reported the error of less than 10% error snow cover presence (Hall et al., 2006; Hall & Riggs, 2007).

Deleted: (Hall & Riggs, 2007; Salomonson & Appel, 2004)

Deleted: (Klein & Barnett, 2003).

Field Code Changed

2.2 SRTM Digital Elevation Model (DEM)

The Shuttle Radar Topography Mission (SRTM) 90m gridded Digital Elevation Model (DEM) version 4.1 was obtained from Consortium for Spatial Information CGIAR-CSI GeoPortal (<http://srtm.csi.cgiar.org>). These data were resampled to 5 km

185 resolution over the study region and used for the hypsographic analysis of snow cover. The corresponding value of snow cover
was extracted from MODIS *Terra* at 5 km to analyze spatial, hypsographic variability, and temporal trends.

2.3 Methodology

190 Monthly average snow cover in 5 km resolution (collection 6, product MOD10CM v6) was obtained in HDF-EOS format from
[the NSIDC DAAC](#). The data was processed in gridded form, known as Climate Modeling Grid (CMG), from March 2000 to
February 2017 and used to extract average snow cover and basic quality assurance (QA) in a Geographic Lat/Lon projection.
MODIS pixels were assigned a numeric code for the night (211), cloud (250), no decision (253), water mask (254), and other
fill values (255). All the Snow Cover Monthly CMG datasets were extracted for the HKH region, as demarcated by ICIMOD
(<https://www.icimod.org/>). The snow cover extent in each pixel (range of value from 0 to 100) was determined, formatted
(ASCII), and archived, and later on were used for the geospatial analysis. The altitude data for the study region were extracted
195 from SRTM DEM and used for generating hypsographic curves and for analysis of snow cover change with altitude and trends.
The HKH region was further divided into five different longitudinal zones (west to east) named as zone-1 (60-70° E), zone-2
(70-80° E), zone-3 (80-90° E), zone-4 (90-100° E) and zone-5 (100-105° E). For seasonal analysis, the data were categorized
into two seasons, i.e., the Melting season from March to August and the Accumulating season from September to February.
The seasonal hypsographic analysis for accumulating and melting seasons were also carried out. For the purpose of
200 comparison, the hypsographic chart also shows the month of February in the melting season and August in the growing season
as a dotted line. The snow cover distribution maps (monthly, yearly and seasonal) and the trend maps illustrating the increase
or decrease in snow cover have been prepared. The spatial maps include a geographic location with their hypsographic curve
to emphasize snow cover changes with increasing altitude.

3. Results and Discussion

205 3.1 Spatial snow cover changes

The mean snow cover (in percent) derived from monthly composites of MODIS *Terra* and its spatial distribution over the
HKH region during 17 years (March 2000 to February 2017) ~~are~~ shown in Figure 1a. The average long-term snow cover is
found to be 35.9% (Table 1); however, the north-western region (particularly Zone-II) ~~shows~~ much higher snow cover as some
of the largest glaciers (such as the Siachen Glacier) and permanent snow-covered are within this zone.

210 The peak in snow cover is observed during February (48.8%), and the lows are observed during August-September (27.9%,
and 27.3%, respectively) (Table 1). The statistics for mean snow cover change with altitude, at an interval of 500m, for
individual months and the entire study period (March 2000 to February 2017) are shown in Table 1. The highest mean snow
cover is found to be above an altitude of 6000 m (96.6%). The long-term average zonal snow cover is found to be 14.4%,

Deleted: is

Deleted: show

38.7%, 13.5%, 17.2%, and 7.9% for Zone-I, II, III, IV, and V (west to east), respectively (Table 2). The zonal and the altitudinal breakup of mean snow cover show the highest value (99.1%) over the Zone-II (70-80 °E). The Zone-V (100-105 °E) also shows a higher mean snow cover (>96%) even at a relatively lower altitude (5500-6000m) as compared to other zones (Table 3). The white-colored patches in Figure 1a represent some of the major lakes and reservoirs such as Qinghai, Cedo Caka, Selin Co, Nam Co, and Yamzhog Yumco.

The frequency of snow cover (i.e., snow cover persistence) is essential for understanding the temporal variability of snow cover and its spatial distribution. Using the monthly snow cover images, we obtained the frequency of the presence of snow cover (for each pixel) for the entire study duration (204 months), from March 2000 to February 2017. Figure 1b depicts the total number of snow-covered months for the HKH region. The monthly snow cover clearly depicts the high-altitude Himalayan mountain range with permanent snow cover, and also other regions of the Tibetan Plateau with relatively permanent snow cover (Figure 1c). Figure 1c shows the regions with persistent snow cover above 80% for the entire study duration, i.e., the permanent snow cover regions in the HKH region based on MODIS observations.

The monthly spatial distribution of MODIS derived mean snow cover (Figure 2a) shows that the maximum and minimum is observed during February and August-September, respectively (Table 1). The monthly average snow cover maps also show that there is an overall gradual increase in the mean snow cover from September to February, which is known as the accumulating season (Figure 2b). Similarly, there is an overall decline from March-August, which is known as the melting season (Figure 2b). The monthly variability over the early phase (2003-04, 2004-2005) and later phase (2011-2012, 2015-16) compared to the average snow cover over the entire study period (2000-2017) suggest a gradual decline in snow cover from 2004-05 to 2015-16 period. However, specific anomalous years (2003-04 or 2011-12) compared to the entire study period needs to be further investigated in detail. In addition to monthly variability, zonal and altitude variability should be considered in explaining some of these trends and observed anomalies.

3.2 Temporal changes in snow cover with altitude

The hypsographic curves of annual mean snow cover for 2000-2016 and the seasonal (March to February) snow cover for 2000-2017 for the HKH region are shown in Figure 3. The mean snow cover is shown as a solid black line (base), and annual lines clearly depict anomalous years compared to the long-term average snow cover. The change in snow cover with altitude clearly shows that there is a sharp jump in snow cover percent between 5001 to 6400m elevations. Above 6400m altitude, the snow cover is usually very high (>96%) and does not show a large inter-annual variability compared to the range of altitude from 3001-5000m, with overall ~30-35% snow cover. Below 3000m, the snow cover percent gradually declines from ~30% to ~10% up to 1000m altitude. Below 1000m altitude, there is a slight increase in the snow cover (about ~15%) with an increase in interannual variability (compared to 1001-3000m). This increase in interannual variability at lower altitudes may be attributed to known issues such as topographic shadows in the snow cover retrieval algorithm. The relatively lower seasonal

snow cover for 2016 is due to missing data for the months of January and February, which represent the peak of snow accumulating season.

Figure 4a shows the hypsographic curves of seasonal average snow cover during the accumulating (red line), melting (blue line), and all (black line) seasons for the 2000 to 2017 period over the HKH region. It clearly shows that above 5500m altitude, the difference in snow cover between accumulating and melting season reduced with altitude, depicting permanent snow and glacier-covered regions (>90% snow cover). However, between ~1001 to 5000m altitude, the accumulating, melting seasons and overall data (composites of 100m intervals depicted by red, blue, and black solid line, respectively) show conspicuous differences in the average snow cover (~30% between 3001-5000m and ~10% between 1000-2000m). The shaded region (numerous fine lines of red and blue) indicates individual observations and their very large range and fluctuations between 1001-5000m that gradually decreases at higher altitudes (6000-7000m). The accumulating season usually has a higher mean snow cover percentage as compared to melting season at the elevations between 800m to 5400m, but below 800m the hypsographic curve behaves oppositely, underlining the issues such as topographic shadows in the snow cover retrieval algorithm.

The hypsographic curve depicting monthly composites of average snow cover during the snow melting and accumulating season over the HKH region (2000-2017) is shown in Figure 4b. In general, the curve is shifting towards the lower mean snow cover from March to August (snow melting season), whereas shifts towards the higher mean snow cover percentage from September to February (snow accumulating season). For comparison, the maxima are observed in February (in the melting season chart), and the minima are observed in August (in the accumulating season chart), which is highlighted as a dashed line to mark the end of the previous season. The gradual variation in the monthly mean snow cover with the passage of season, especially between 1001-5000m altitude, is clearly visible. The mean snow cover for the accumulating and melting season is depicted by a solid black line. Above 3000m altitude, the July-August period consistently shows the lowest snow cover during a melting season. Similarly, in the accumulating season, the month of February clearly marks the highest snow cover between 501-6000m altitude. Zonal construction of such hypsographic curves may allow detection of anomalous years that vary significantly from the normal seasonal cycle. Overall, snow cover for the months of December, January, February, March, and April show higher mean values as compared to other months. Above the altitude of 5000, the variability of mean snow cover is found to be minimum. Hypsographic analysis (Figure 4b and 4c) shows a notable change from March onwards where substantial decline in snow cover is found (0-5500 m altitude and average black-line) and a increase in snow cover is observed from September onwards (0-5500 m altitude). Melting season is considered from March onwards and growing season from September onwards for such analysis. This is expected as the areal extent of snow cover below 5500m is higher and regions with thin and seasonal snow cover are generally found at relatively lower altitudes which are affected much earlier during the change of season than the thick snow cover/glaciers at higher altitudes. The higher altitude snow cover (5500-7000m) shows a lag (approx. one month) in starting of melting and accumulation phase.

Deleted: acculation

280 3.3 Trend Analysis

In general, the overall time series analysis presented here (Figure 5a) shows a very weak and statistically insignificant negative trend (or decline) of snow cover over the entire study area. This in contrast to the several studies and databases, based on ground and satellite observations, over last 2-3 decades ([Berthier et al. 2007](#); [Bolch 2007](#); [Kulkarni 2006](#); [Raup et al. 2007](#)) that shows contrasting changes in snow cover over the Himalayas. This implies that regional and altitudinal analyses are required to capture the variability (Figure 5a). The line chart with a linear fit shows the time series analysis of monthly mean MODIS snow cover over the HKH region (2000-2016) (Figure 5a). The variation of pixel count (area) is shown as histograms. The snow cover is usually found to be lowest in the months of July or August and highest in January or February, respectively. The pixel-level trend analysis (linear fit) at 5km grid resolution, based on the monthly time series of mean snow cover for the entire HKH region (Figure 5b), show large spatial variability, as calculated from the slope of the linear fit. Figure 5c present the statistically significant (95% confidence interval) pixels or aggregates of pixels (regions) where the linear trend is strongly positive or negative (-30 to 30%). The central Himalayan mountains, northern parts of Nepal show a significant increase in snow cover (red and brown color zones, 10 to 30%), whereas parts of Arunachal Pradesh and eastern Himalayan and Tibetan Plateau show a significant and large decline in the snow cover (green color zones, -10 to -30%). Snow and glacier images from Arunachal Pradesh show a large decline in snow cover and signs of glacier melting ([Prasad and Singh 2007](#)). For example, a recent study (Basnett et al., 2013) of changes in the area of glaciers in Tista Basin occupying ~200Km², Sikkim, Eastern Himalayas show a loss of $3.3 \pm 0.08\%$ in the area and an increase in the debris-covered area by $6.5 \pm 1.4 \text{ km}^2$ during 1989-90 and 2010 timeframe. Light yellow color regions (Figure 5c) represent statistically significant regions where the linear trend is found to be negative (up to -10%).

The hypsographic curve depicting total changes in snow cover for the entire HKH region for 2000-2017 period, obtained from Linear (LIN) fit, is shown in Figure 6a. The thick solid line (red/black) represent aggregates of values at 100m interval, and thin red/black horizontal bars represent percentage changes at 1m interval. The red color is altitudinal variation of total changes in snow cover for statistically significant regions only, whereas the black line is for the entire region (including both statistically significant and insignificant areas). The red line, for statistically significant regions, shows larger variability and clearly indicates an overall loss in snow cover with altitude. The total change in snow cover (100m aggregates) is found to be about -5% for altitudes of 4001-4500m and 5501-6000m. However, the thin horizontal red lines indicate that the statistically significant loss for specific regions can vary and be even higher, i.e., -5 to -15% (Figure 6a).

Figure 6c presents the hypsographic curve depicting total changes in snow cover over for entire HKH region during 2000-2017, obtained from the Linear trend (LIN, Pearson product-moment linear correlation), and the median trend (TS, Theil-Sen). The variability of rate of change of snow cover, based on these analyses, are largely similar over the range of altitude for relatively long time series (17 years). The mean rate of change (LIN method) shows a peak between 4001-4500m (about -2.5%) and 5501-6000m (about -3%) altitudes. We obtained a similar linear trend from median trend analysis (TS) and the monotonic trend (Mann-Kendall (MK) statistics. The Z score is shown in the same scale as LIN and TS for comparison) in

Deleted: (Berthier et al., 2007; Tobias Bolch, 2007; Kulkarni, 2006; Raup et al., 2007) that shows contrasting changes in snow cover over the Himalayas.

Deleted: (Prasad & Singh, 2007).

Figure 6b. Overall, the trend analysis (LIN, TS and MK, Figure 6b) clearly shows a large reduction in glacier cover area only for 4001-4500m and very high-altitude regions (5501-6000m). The statistically significant regions, as in linear trend analysis (Figure 6a), clearly show a large decline in snow cover (average of 5% or more, at 100m intervals) between 4001-4500m and 5501-6000m altitudes. The mean snow cover percent change is found to be -1.0% and -2.0% in Zone 4 and 5, respectively (Table 4). The altitudinal change in snow cover shows that only a limited part of the HKH region located in the 6001-7000m elevation (between Zone II-IV, between 70°-100°E, Table 5) is found to be positive, thereby implying that no decline in snow cover is observed in very high-altitude regions (above 6000m).

Table 5 is the summary of the overall zonal trend analysis for the entire study period (2000-2017). The change in snow cover is presented as an average at 500m intervals. The regions at altitudes of 3501-4500m and 5001-6000m show a decline in snow cover, but this decline varies widely for different attitudes and zones (west to east). For example, the westernmost zone (Zone 1, 60°-70°E) extends up to 5000m altitude but does not show any decline in snow cover. The adjacent Zone 2 (70°-80°E) shows a decline in snow cover (-0.13% between 5501-6000m altitude whereas no such decline is observed at very high altitude 6001-7000m. The central region (Zone 3, 80°-90°E), that extends up to 7000m altitude, shows more signs of decline in snow cover between 3001-4500m and 5001-6000m elevations, whereas no such decline is observed at higher altitudes 6001-7000m. Further east, Zone 4 (90°-100°E), shows greater signs of the overall decline in snow cover from 2501-6000m elevation, whereas no such decline is observed at higher altitudes 6001-7000m. The eastern zone (Zone 5) is most affected, showing a decline in snow cover at all altitudes (501-5500m) except at the highest altitude in this region (5501-6000). The largest decline is found to be around -11.2% between 4501-5000m altitude in zone V.

The observed linear trend, for altitudes between 3001-7000m at an interval of 500m, suggests that it may take hundreds of years for any drastic change in the mean snow and glacier cover, especially at higher altitudes 6001-7000m (Figure 7). The altitudinal linear trend for 3001-7000m, at 500m interval for the study period (2000-2017) shows that it may take 76-94 year for approximately 25% decline in the mean snow cover for altitudes of 3001-4500m and 5501-6000m, and hundreds or thousands of years for 4501-5500m and 6001-7000m altitudes, over the HKH region (Figure 7).

Deleted: year

4. Summary and Conclusions

We found spatial and altitudinal changes in snow and glacier cover during 2000-2017 for the Hindu Kush Himalayan (HKH) region. There are significant heterogeneity and variability in these changes due to the vast area that this region covers. We conducted a zonal and altitudinal analysis of these changes using a variety of statistical analyses. We found;

1. Zonal (western, central, and eastern) variations in snow cover are prominent where the highest snow and glacier cover is found in the western zones. Zone I and Zone II, located between 60°-80°E, show snow cover at 46.4% and 48.2%, respectively.

2. The variation in snow cover with altitude, calculated at 500m intervals, is not uniform across the HKH region. Zone II, III, IV, and V, located between 70-100°E, show greater than 93% snow cover between 6001-7000m altitude, and between 5501-6000m in Zone 5.

3. The mean snow cover for the study period (2000-2017) during melting or accumulating seasons generally remains below 40% up to ~5500m altitude but rapidly increases to >90% at higher altitude (6000-7000m).

4. In general, the mean snow cover during the study period (2000-2017) was found to be below 30% for 3001-5000m altitude during the melting season (March to August), but it is greater than 30% during the accumulating season (September to February).

5. The average decreasing rate of snow cover/ glacier area is very low (-0.0024 % per year, or -0.024% per decade), based on linear trend analysis (LIN), and is insignificant for the entire region. However, the HKH region show large and contrasting regional variations both across the zones (west to east), and also with altitude.

6. The central and eastern zones (Zone III, IV and V, 80°-105°E) of the HKH show more prominent decline in snow cover as compared to Zone I and II (60°-80°E). In contrast, the western Zone-I and Zone-II contain specific regions where the snow cover trend is found to be positive (increase during the study period).

7. At higher altitudes, particularly between 6001-7000m, all zones (Zone-II, III and IV) show an increasing trend, compared to a contrasting declining trend at relatively lower altitudes (5501-6000m).

8. The declining trend of snow cover is observed at increasingly lower altitudes and moving eastwards from Zone III to Zone V. Zone 5 shows a negative trend at all altitudes, except at the highest altitude (5501-6000m).

9. The linear trend analysis for altitudinal changes suggest that it may take 76-94 year for 25% decline in the mean snow cover for 3001-4500m and 5501-6000m altitudes, and perhaps hundreds of years for 4501-5500m, and 6001-7000m altitudes, over the HKH region.

10. Though the increasing trend is observed over specific regions, a substantial decline in some specific zones/regions observed from temporal trend analysis is a cause for concern.

It is observed that better long-term datasets, with higher spatial and temporal resolution, will provide greater insight for regions that show major anomalies and rapid change. The current work is an attempt to offer analysis across this extremely sensitive region in order to establish a case for increased attention to the influence of climate on snow cover globally. As the satellite-derived dataset expands, future studies can utilise even longer-term datasets to evaluate the validity of findings and conclusions of this study.

Deleted: ,

Deleted: the

Acknowledgments

The authors are grateful to NASA National Snow and Ice Data Center (NSIDC) Distributed Active Archive Center (DAAC) for providing snow cover related data since the launch of Moderate Resolution Imaging Spectroradiometer (MODIS) onboard

Terra. The authors are thankful to [the Consortium for Spatial Information CGIAR-CSI GeoPortal](#) for providing the Shuttle Radar Topography Mission (SRTM) 90m gridded Digital Elevation Model (DEM) version 4.1 used in this study.

References

- 385 Bamzai, [AS](#), and [J. Shukla](#), 1999, "Relation between Eurasian [Snow Cover](#), [Snow Depth](#), and the Indian [Summer Monsoon](#): An [Observational Study](#)." *JOURNAL OF CLIMATE*, 12(10):3117–32. doi: 10.1175/1520-0442(1999)012<3117:RBESCS>2.0.CO;2.
- Berthier, E., [Y. Arnaud](#), [R. Kumar](#), [S. Ahmad](#), [P. Wagnon](#), and [P. Chevallier](#), 2007, "Remote [Sensing Estimates of Glacier Mass Balances](#) in the Himachal Pradesh (Western Himalaya, India)." *Remote Sensing of Environment*, 108(3):327–38. doi: 10.1016/j.rse.2006.11.017.
- 390 Bolch, T., [A. Kulkarni](#), [A. Käab](#), [C. Huggel](#), [F. Paul](#), [J. G. Cogley](#), [H. Frey](#), [J. S. Kargel](#), [K. Fujita](#), [M. Scheel](#), [S. Bajracharya](#), and [M. Stoffel](#), 2012, "The [State and Fate of Himalayan Glaciers](#)." *Science*, 336(6079):310–14. doi: 10.1126/science.1215828.
- Bolch, Tobias, 2007, "Climate [Change](#) and [Glacier Retreat](#) in [Northern Tien Shan](#) (Kazakhstan/Kyrgyzstan) [Using Remote Sensing Data](#)." *Global and Planetary Change*, 56(1–2):1–12. doi: 10.1016/j.gloplacha.2006.07.009.
- 395 Bookhagen, [Bodo](#), and [Douglas W. Burbank](#), 2010, "Toward a [Complete Himalayan Hydrological Budget](#) : Spatiotemporal [Distribution of Snowmelt and Rainfall](#) and [Their Impact on River Discharge](#)." 115:1–25. doi: 10.1029/2009JF001426.
- Chaturvedi, [Rajiv Kumar](#), [Jaideep Joshi](#), [Mathangi Jayaraman](#), [G. Bala](#), and [N. H. Ravindranath](#), 2012, "Multi-[Model Climate Change Projections](#) for India under [Representative Concentration Pathways](#)." *Current Science*, 103(7):791–802.
- 400 [Chen, Wenjun](#), [Lori White](#), [Sylvain G. Leblanc](#), [Rasim Latifovic](#), and [Ian Olthof](#), 2021, "Elevation-Dependent [Changes to Plant Phenology](#) in Canada's Arctic Detected Using Long-Term Satellite Observations." *Atmosphere* 12(9):1133. doi: 10.3390/atmos12091133.
- Cogley, J., [Graham](#), 2016, "Glacier [Shrinkage](#) across High Mountain Asia." 57(71):41–49. doi: 10.3189/2016AoG71A040.
- 405 [Duan, Anmin](#), and [Guoxiong Wu](#), 2006, "Change of [Cloud Amount](#) and the [Climate Warming](#) on the [Tibetan Plateau](#)." *Geophysical Research Letters* 33(22):L22704. doi: 10.1029/2006GL027946.
- Duo, [Chu, Hongjie](#), [Xie, Pengxiang](#), [Wang, Jianping](#), [Guo, Jia La](#), [Yubao Qiu](#), and [Zhaojun Zheng](#), 2014, "Snow [Cover Variation](#) over the Tibetan Plateau from MODIS and [Comparison with Ground Observations](#)." *Journal of Applied Remote Sensing*, 8(1):084690. doi: 10.1117/1.jrs.8.084690.
- 410 [Frei, Allan](#), [Marco Tedesco](#), [Shihyan Lee](#), [James Foster](#), [Dorothy K. Hall](#), [Richard Kelly](#), and [David A. Robinson](#), 2012, "A [Review of Global Satellite-Derived Snow Products](#)." *Advances in Space Research*, 50(8):1007–29. doi: 10.1016/j.asr.2011.12.021.
- [Gautam, Ritesh](#), [N. Christina Hsu](#), [William K. M. Lau](#), and [Tepei J. Yasunari](#), 2013, "Satellite Observations of [Desert Dust-Induced Himalayan Snow Darkening](#): DUST-INDUCED HIMALAYAN SNOW DARKENING." *Geophysical Research Letters* 40(5):988–93. doi: 10.1002/grl.50226.

Deleted: A., & ... S., and J. Shukla, J. (... 1999). ... "Relation between Eurasian snow cover, snow depth...now Cover, Snow Depth, and the Indian summer monsoon...ummer Monsoon: An observational study....bservational Study." *JOURNAL OF CLIMATE*,...12(10), ...:3117–3132. https://...2. doi.org/

Deleted: Y..... Kumar, R..... Ahmad, S..... Wagnon, and P., &... Chevallier, P. (... 2007). ... "Remote sensing estimates...ensing Estimates of glacier mass balances...lacier Mass Balances in the Himachal Pradesh (Western Himalaya, India)....." *Remote Sensing of Environment*,...108(3), ...:327–338. https://...8. doi.org/

Deleted: Käab, A..... Huggel, C..... Paul, F..... G. Cogley, J. G..... Frey, H..... S. Kargel, J. S..... Fujita, K..... Scheel, M..... Bajracharya, S., &...nd M. Stoffel, M. (... 2012). ... "The state...tate and fate...ate of himalayan glaciers...imalayan Glaciers." *Science*,...336(6079), ...:310–314. https://...4. doi.org/

Deleted: (...007). ... "Climate change...hange and glacier retreat...lacier Retreat in northern...orthern Tien Shan (Kazakhstan/Kyrgyzstan) using remote sensing data....sing Remote Sensing Data." *Global and Planetary Change*,...56(1–2), ...:1–12. https://...oi.org/

Deleted: B., & ...odo, and Douglas W. Burbank, D. W. (... 2010). . "Toward a complete...omplete Himalayan hydrological budget...ydrological Budget : Spatiotemporal distribution...istribution of snowmelt...nowmelt and rainfall...ainfall and their impact...heir Impact on river discharge...river Discharge." 115, ...1–25. https://...oi.org/

Deleted: R. K.,...ajiv Kumar, Jaideep Joshi, J.,...athangi Jayaraman, M..... Bala, G., &...nd N. H. Ravindranath, N. H. (... 2012). ... "Multi-model climate change projections...odel Climate Change Projections for India under representative concentration pathways...epresentative Concentration Pathways." *Current Science*,...103(7), ...

Deleted: G. (...raham, 2016). ... "Glacier shrinkage...hrinkage across High Mountain Asia...." 57(71), ...:41–49. https://...oi.org/

Deleted: C.....hu, Hongjie Xie, H.....engxiang Wang, P.....ianping Guo, J.....ia La, J.....ubao Qiu, Y., &...nd Zhaojun Zheng, Z. (... 2014). ... "Snow cover variation...over Variation over the Tibetan Plateau from MODIS and comparison...omparison with ground observations...round Observations." *Journal of Applied Remote Sensing*,...8(1), ...:084690. https://...oi.org/

Deleted: A.....llan, Marco Tedesco, M.....hiyan Lee, S.....ames Foster, J.....orothy K. Hall, D. K.....ichard Kelly, R., &...nd David A. Robinson, D. A. (... 2012). A review of global satellite-derived snow products... "A Review of Global Satellite-Derived Snow Products." *Advances in Space Research*,...50(8), ...:1007–1029. https://...9. doi.org/

- 595 GURUNG, D. R., A. V. Kulkarni, A. Giriraj, K. S. Aung, and B. Shrestha, 2011. "Monitoring of Seasonal Snow Cover in Bhutan Using Remote Sensing Technique." *Current Science*, 101(10):1364–70.
- Hall, D. K., G. A. Riggs, and V. V. Salomonson, 2006. "MODIS Snow and Sea Ice Products." Pp. 154–81 in *Earth Science Satellite Remote Sensing: Science and Instruments, Vol. 1*.
- Hall, Dorothy K., and George A. Riggs, 2007. "Accuracy Assessment of the MODIS Snow Products." *Hydrological Processes*, 21(12):1534–47. doi: 10.1002/hyp.6715.
- 600 Immerzeel, Walter, 2008. "Historical Trends and Future Predictions of Climate Variability in the Brahmaputra Basin." *International Journal of Climatology*, 28(2):243–54. doi: 10.1002/joc.1528.
- Immerzeel, Walter W., Ludovicus P. H. van Beek, and Marc F. P. Bierkens, 2010. "Climate Change Will Affect the Asian Water Towers." *SCIENCE* 328(5984):1382–85.
- 605 Kang, Shichang, Qiangong Zhang, Yun Qian, Zhenming Ji, Chaoliu Li, Zhiyuan Cong, Yulan Zhang, Junming Guo, Wentao Du, Jie Huang, Qinglong You, Arnico K. Panday, Maheswar Rupakheti, Deliang Chen, Örjan Gustafsson, Mark H. Thiemens, and Dahe Qin, 2019. "Linking Atmospheric Pollution to Cryospheric Change in the Third Pole Region: Current Progress and Future Prospects." *National Science Review*, 6(4):796–809. doi: 10.1093/nsr/nwz031.
- Klein, Andrew G., and Ann C. Barnett, 2003. "Validation of Daily MODIS Snow Cover Maps of the Upper Rio Grande River Basin for the 2000-2001 Snow Year." *Remote Sensing of Environment*, 86(2):162–76. doi: 10.1016/S0034-4257(03)00097-X.
- 610 Kulkarni, Anil V. 2006. "Glacial Retreat in Himalaya Using Indian Remote Sensing Satellite Data." P. 641117 in, edited by R. J. Kuligowski, J. S. Parihar, and G. Saito, Goa, India.
- Muhuri, Arnab, Simon Gascoïn, Lucas Menzel, Tihomir Kostadinov, Adrian Harpold, Alba Sanmiguel-Valladolid, and Juan Ignacio Lopez Moreno, 2021. "Performance Assessment of Optical Satellite Based Operational Snow Cover Monitoring Algorithms in Forested Landscapes." *IEEE Journal of Selected Topics in Applied Earth Observations and Remote Sensing* 1–1. doi: 10.1109/JSTARS.2021.3089655.
- 615 Muhuri, Arnab, Surender Manickam, Avik Bhattacharya, and Snehamani, 2018. "Snow Cover Mapping Using Polarization Fraction Variation With Temporal RADARSAT-2 C-Band Full-Polarimetric SAR Data Over the Indian Himalayas." *IEEE Journal of Selected Topics in Applied Earth Observations and Remote Sensing* 11(7):2192–2209. doi: 10.1109/JSTARS.2018.2817687.
- 620 Pachauri, Rajendra K. 2014. *Climate Change 2014 Synthesis Report*.
- Panday, P. K., K. E. Frey, and B. Ghimire, 2011. "Detection of the Timing and Duration of Snowmelt in the Hindu Kush-Himalaya Using QuikSCAT, 2000-2008." *Environmental Research Letters*, 6(2). doi: 10.1088/1748-9326/6/2/024007.
- 625 Pandey, Pratima A. V. Kulkarni, and Gopalan Venkataraman, 2012. "Remote Sensing Study of Snowline Altitude at the End of Melting Season, Chandra-Bhaga Basin, Himachal." (May 2015). doi: 10.1080/10106049.2012.705336.
- Parajka, J., M. Pepe, A. Rampini, S. Rossi, and G. Blöschl, 2010. "A Regional Snow-Line Method for Estimating Snow Cover from MODIS during Cloud Cover." *Journal of Hydrology*, 381(3–4):203–12. doi: 10.1016/j.jhydrol.2009.11.042.
- 630 Prasad, A. K., K. H. S. Yang, H. M. El-Askary, and M. Kafatos, 2009. "Melting of Major Glaciers in the Western Himalayas: Evidence of Climatic Changes from Long Term MSU Derived Tropospheric Temperature Trend (1979-2008)." *Annales Geophysicae*, 27(12):4505–19. doi: 10.5194/angeo-27-4505-2009.

Deleted: V., ...riraj, A., ... S. Aung, K. S., & ...nd B. Shrestha, B. (... 2011). ... "Monitoring of seasonal snow cover...easonal Snow Cover in Bhutan using remote sensing technique...sing Remote Sensing Technique." *Current Science*,...101(10), ...:1364–1370 (...)

Deleted: G. A., & ...nd V. V. Salomonson, V. V. (... 2006). ... "MODIS snow and sea ice products...now and Sea Ice Products." 154–81 in *Earth Science Satellite Remote Sensing: Science and Instruments*,... Vol. 1, 154–181.

https://www.scopus.com/inward/record.uri?eid=2-s2.0-79957658739&partnerID=40&md5=f0b08b6c016bedab0076b32b713e8121 (...)

Deleted: & ...nd George A. Riggs, G. A. (... 2007). ... "Accuracy assessment...assessment of the MODIS snow products...now Products." *Hydrological Processes*,...21(12), ...:1534–1547. https://...7. doi.org/ (...)

Deleted: W. (...alter. 2008). ... "Historical trends...rends and future predictions...uture Predictions of climate variability...imate Variability in the Brahmaputra basin...asin." *International Journal of Climatology*,...28(2), ...:243–254. https://...A. doi.org/ (...)

Deleted: W. W., ...alter W., Ludovicus P. H. van Beek, L...nd Marc F. P. H., & ...ierkens, M. F. P. (... 2010). ... "Climate Change Will Affect the Asian Water Towers. In..." *SCIENCE* (Vol. ...28, Issue ...5984, pp. ...:1382–1385). AMER ASSOC ADVANCEMENT SCIENCE. https://doi.org/10.1126/science.1183188 (...)

Deleted: S., ...hichang, Qiangong Zhang, Q., ...un Qian, Y., ...henming Ji, Z., ...haoliu Li, C., ...hiyuan Cong, Z., ...ulan Zhang, Y., ...unning Guo, J., ...entao Du, W., ...ie Huang, J., ...inglong You, Q., ...rnico K. Panday, A. K., ...heswar Rupakheti, M., ...eliang Chen, D., ...rjan Gustafsson, Ö., ...ark H. Thiemens, M. H., & ...nd Dahe Qin, D. (... 2019). ... "Linking atmospheric pollution to cryospheric change...atmospheric Pollution to Cryospheric Change in the Third Pole region...egion: Current (...)

Deleted: A., ...ndrew G., & ...nd Ann C. Barnett, A. C. (... 2003). ... "Validation of daily...aily MODIS snow cover maps...now Cover Maps of the Upper Rio Grande River Basin for the 2000-2001 snow (...)

Deleted: A., ...nil V. (...006). ... "Glacial retreat...etreat in Himalaya using...sing Indian remote sensing satellite data (R...emote Sensing Satellite Data)." P. 641117 in, edited by R. J. (...)

Deleted: R., ...ajendra K. (...014). (...)

Deleted: K. E., & ...nd B. Ghimire, B. (... 2011). ... "Detection of the timing...iming and duration...uration of snowmelt...nowmelt in the Hindu Kush-Himalaya using...sing QuikSCAT, 2000-2008..." *Environmental Research Letters*,...6(2). https://...oi.org/ (...)

Deleted: P., ...ratima, A. V. Kulkarni, A. V., & ...nd Gopalan Venkataraman, G. (... 2012). ... "Remote sensing study...ensing of snowline altitude...nowline Altitude at the end...nd of melting (...)

Deleted: M., ... Rampini, A., ... Rossi, S., & ...nd G. Blöschl, G. (... 2010). A regional snow-line method... "A Regional Snow-Line Method for estimating snow cover...estimating Snow Cover from (...)

Deleted: K., ... H. S. Yang, H., ... M. El-Askary, H., ...nd M., & ... Kafatos, M. (... 2009). ... "Melting of major...ajor Glaciers in the western...estern Himalayas: Evidence of climatic changes...limatic Changes from long term...ong Term MSU derived tropospheric temperature (...)

- Prasad, A. K., and R. Singh, 2007. "Changes in Himalayan Snow and Glacier Cover between 1972 and 2000." *Eos*, 88(33):326. doi: 10.1029/2007EO330002.
- 950 Prasad, Anup K., Hesham M. Elaskary, Ghassem R. Asrar, Menas Kafatos, and Ashok Jaswal. 2011. "Melting of Major Glaciers in Himalayas: Role of Desert Dust and Anthropogenic Aerosols." in *Planet Earth 2011*, edited by E. G. Carayannis. Rijeka: IntechOpen.
- Pratibha, S., and Anil V. Kulkarni, 2018. "Decadal Change in Supraglacial Debris Cover in Baspa Basin, Western Himalaya." *Current Science*, 114(04):792. doi: 10.18520/cs/v114/i04/792-799.
- 955 Raup, Bruce, Adina Racoviteanu, Siri Jodha Singh Khalsa, Christopher Helm, Richard Armstrong, and Yves Arnaud, 2007. "The GLIMS Geospatial Glacier Database: A New Tool for Studying Glacier Change." *Global and Planetary Change*, 56(1-2):101-110. doi: 10.1016/j.gloplacha.2006.07.018.
- Rikiishi, K., and H. Nakasato, 2006. "Height Dependence of the Tendency for Reduction in Seasonal Snow Cover in the Himalaya and the Tibetan Plateau Region, 1966-2001." *Annals of Glaciology*, 43:369-77. doi: 10.3189/172756406781811989.
- 960 Salomonson, V. V., and I. Appel, 2004. "Estimating Fractional Snow Cover from MODIS Using the Normalized Difference Snow Index." *Remote Sensing of Environment*, 89(3):351-60. doi: 10.1016/j.rse.2003.10.016.
- Shrestha, AB, NK Agrawal, B. Alfthan, SR Bajracharya, J. Maréchal, and B. van Oort, 2015. *The Himalayan Climate and Water Atlas*.
- 965 Shrestha, ARUN B., CAMERON P. Wake, PAUL A. Mayewski, and JACK E. Dibb, 1999a. "Maximum Temperature Trends in the Himalaya and Its Vicinity: An Analysis Based on Temperature Records from Nepal for the Period 1971 - 94." *Journal of Climate*, 12(June 2015):2775-86. doi: 10.1175/1520-0442(1999)012<2775>
- Shrestha, ARUN B., CAMERON P. Wake, PAUL A. Mayewski, and JACK E. Dibb, 1999b. "Maximum Temperature Trends in the Himalaya and Its Vicinity: An Analysis Based on Temperature Records from Nepal for the Period 1971 - 94." *Journal of Climate*, 12(June 2015):2775-86. doi: 10.1175/1520-0442(1999)012<2775>
- 970 Siderius, C., H. Biemans, A. Wiltshire, S. Rao, W. H. P. Franssen, P. Kumar, A. K. Gosain, M. T. H. Van Vliet, and D. N. Collins, 2013. "Science of the Total Environment Snowmelt Contributions to Discharge of the Ganges." *Science of the Total Environment*, The, 468-469: S93-101. doi: 10.1016/j.scitotenv.2013.05.084.
- 975 Soncini, Andrea, Daniele Bocchiola, Gabriele Confortola, Alberto Bianchi, Renzo Rosso, Christoph Mayer, Astrid Lambrecht, Elisa Palazzi, Claudio Smiraglia, and Guglielmina Diolaiuti, 2015. "Future Hydrological Regimes in the Upper Indus Basin: A Case Study from a High-Altitude Glaciated Catchment." *Journal of Hydrometeorology*, 16(1):306-26. doi: 10.1175/jhm-d-14-0043.1.
- Tang, B., H. B. Shrestha, Z. L. Li, G. Liu, H. Ouyang, D. R. Gurung, A. Giriraj, and K. S. Aung, 2012. "Determination of Snow Cover from MODIS Data for the Tibetan Plateau Region." *International Journal of Applied Earth Observation and Geoinformation* 21(1):356-65. doi: 10.1016/j.jag.2012.07.014.
- 980 Tang, Bo-hui, Basanta Shrestha, Zhao-liang Li, Gaohuan Liu, Hua Ouyang, and Deo Raj. 2013. "Determination of Snow Cover from MODIS Data for the Tibetan Plateau Region." *International Journal of Applied Earth Observations and Geoinformation*, 21:356-65. doi: 10.1016/j.jag.2012.07.014.
- Tang, Zhiguang, and Xin Wang, 2013. "Extraction and Assessment of Snowline Altitude over the Tibetan Plateau Using MODIS Fractional Snow Cover Data (2001 to 2013)." doi: 10.1117/1.JRS.8.
- 985
- Deleted:** &...nd R. Singh, R. (... 2007). ... "Changes in Himalayan snow...now and glacier cover...lacier Cover between 1972 and 2000..." *Eos*,...88(33), ...:326. https://...oi.org/ (...)
- Deleted:** &...nd Anil V. Kulkarni, A. V. (... 2018). ... "Decadal Change in Supraglacial Debris Cover in Baspa Basin, Western Himalaya..." *Current Science*,...114(04), ...:792. https://...oi.org/ (...)
- Deleted:** B...rce, Adina Racoviteanu, A...iri Jodha Singh Khalsa, S. J. S...,hristopher Helm, C...,richard Armstrong, R., Yves Arnaud, Y. (... 2007). ... "The GLIMS geospatial glacier database: A new tool...eospatial Glacier Database: A New Tool for studying glacier change...tuding Glacier Change." *Global and Planetary Change*,...56(1-2), ...:101-110. https://...0. doi.org/ (...)
- Deleted:** &...nd H. Nakasato, H. (... 2006). ... "Height dependence...pendence of the tendency...endency for reduction...eduction in seasonal snow cover...easonal Snow Cover in the Himalaya and the Tibetan Plateau region...egion, 1966-2001..." *Annals of Glaciology*,...43, ...:369-377. https://...7. doi.org/ (...)
- Deleted:** &...nd I. Appel, I. (... 2004). ... "Estimating fractional snow cover...ractional Snow Cover from MODIS using the normalized difference snow index...sing the Normalized Difference Snow Index." *Remote Sensing of Environment*,...89(3), ...:351-360. https://...0. doi.org/ (...)
- Deleted:** A...B, NK Agrawal, N..., Alfthan, B...,R Bajracharya, S..., Maréchal, J., &...nd B. van Oort, B. (... 2015) (...)
- Deleted:** A...RUN B., CAMERON P. Wake, C. P...,AUL A. Mayewski, P. A., &...nd JACK E. Dibb, J. E. (... 1999a). ... "Maximum Temperature Trends in the Himalaya and Its Vicinity...icity: An Analysis Based on Temperature Records from Nepal for the Period 1971 - 94..." *Journal of Climate*,...12(June 2015), ...:2775-2786. https://...6. doi.org/ (...)
- Deleted:** A...RUN B., CAMERON P. Wake, C. P...,AUL A. Mayewski, P. A., &...nd JACK E. Dibb, J. E. (... 1999b). ... "Maximum Temperature Trends in the Himalaya and Its Vicinity...icity: An Analysis Based on Temperature Records from Nepal for the Period 1971 - 94..." *Journal of Climate*,...12(June 2015), ...:2775-2786. https://...6. doi.org/ (...)
- Deleted:** H...,... Wiltshire, A...,... Rao, S...,... H. P. Franssen, W. H. P...,... Kumar, P...,... K. Gosain, A. K...,... T. H. Van Vliet, M. T. H. V., &...nd D. N. Collins, D. N. (... 2013). ... "Science of the Total Environment Snowmelt contributions...ontributions to discharge...ischarge of the Ganges..." *Science of the Total Environment, The*,...468-469, ...S93-S101. https://...01. doi.org/ (...)
- Deleted:** A...,...ndrea, Daniele Bocchiola, D...,...abriele Confortola, G...,...lberto Bianchi, A...,...enzo Rosso, R...,hristoph Mayer, C...,...strid Lambrecht, A...,...lisa Palazzi, E...,...ludio Smiraglia, C., &...nd Guglielmina Diolaiuti, G. (... 2015). ... "Future Hydrolog (...)
- Deleted:** ...H., B. Shrestha, B...,... L. Li, Z...,... Liu, G...,... Ouyang, H., & Raj, (... 2013). ... Gurung, A. Giriraj, and K. S. Aung, 2012. "Determination of snow cover...now Cover from MODIS data...ata for the Tibetan Plateau region. (...)
- Deleted:** ...21, ...:356-365. https://...5. doi.org/ (...)
- Deleted:** Tang, B.-H., Shrestha, B., Li, Z.-L., Liu, G., Ouyang, H., Gurung, D. R., Giriraj, A., & Aung, K. S. (2012). Determination of snow cover from MODIS data for the Tibetan Plateau region. *International Journal of Applied Earth Observation and* (...)

225 Wang, Wei, Xiaodong Huang, Jie Deng, Hongjie Xie, and Tiangang Liang. 2015. "Spatio-Temporal Change of Snow Cover and Its Response to Climate over the Tibetan Plateau Based on an Improved Daily Cloud-Free Snow Cover Product." *Remote Sensing* 7(1):169–94. doi: 10.3390/rs70100169.

Wang, Xianwei, and Hongjie Xie. 2009. "New Methods for Studying the Spatiotemporal Variation of Snow Cover Based on Combination Products of MODIS Terra and Aqua." *Journal of Hydrology* 371(1–4):192–200. doi: 10.1016/j.jhydrol.2009.03.028.

230 You, Qing Long, Guo Yu Ren, Yu Qing Zhang, Yu Yu Ren, Xiu Bao Sun, Yun Jian Zhan, Arun Bhakta Shrestha, and Raghavan Krishnan. 2017. "An Overview of Studies of Observed Climate Change in the Hindu Kush Himalayan (HKH) Region." *Advances in Climate Change Research* 8(3):141–47. doi: 10.1016/j.accre.2017.04.001.

- Deleted: W.,
- Deleted: X.,
- Deleted: J.,
- Deleted: H., &
- Deleted: , T. (
- Deleted:),
- Deleted: temporal change
- Deleted: snow cover
- Deleted: its response
- Deleted: climate
- Deleted: based
- Deleted: improved daily cloud-free snow cover product.
- Deleted: ,
- Deleted:),
- Deleted: 194. https://
- Deleted: .org/
- Deleted: X., &
- Deleted: , H. (
- Deleted:),
- Deleted: methods
- Deleted: studying
- Deleted: spatiotemporal variation
- Deleted: snow cover based
- Deleted: combination products
- Deleted: .
- Deleted: ,
- Deleted:),
- Deleted: https://
- Deleted: .org/

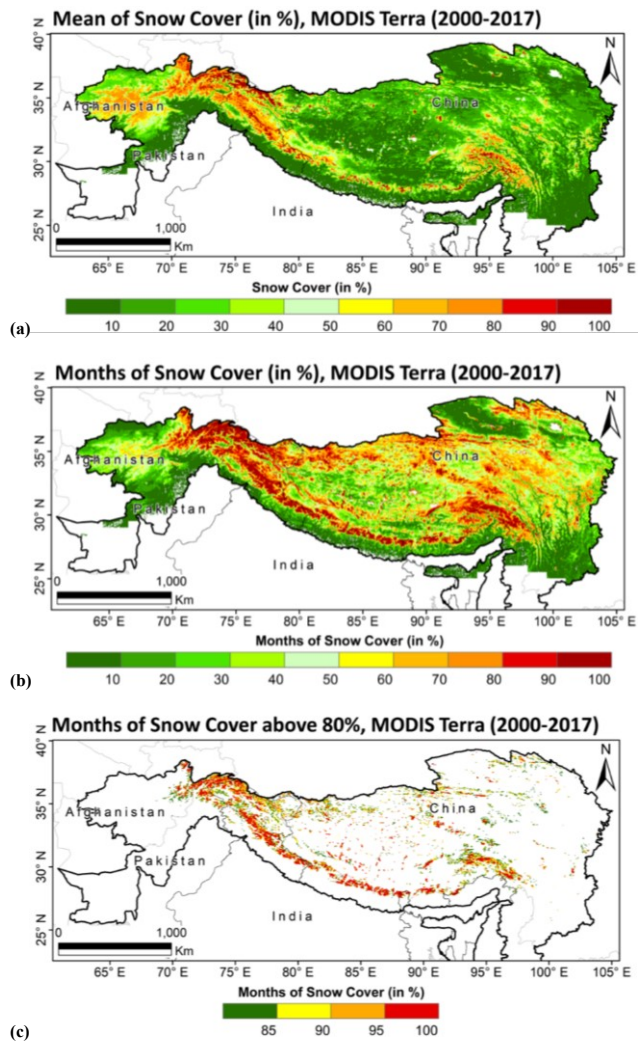
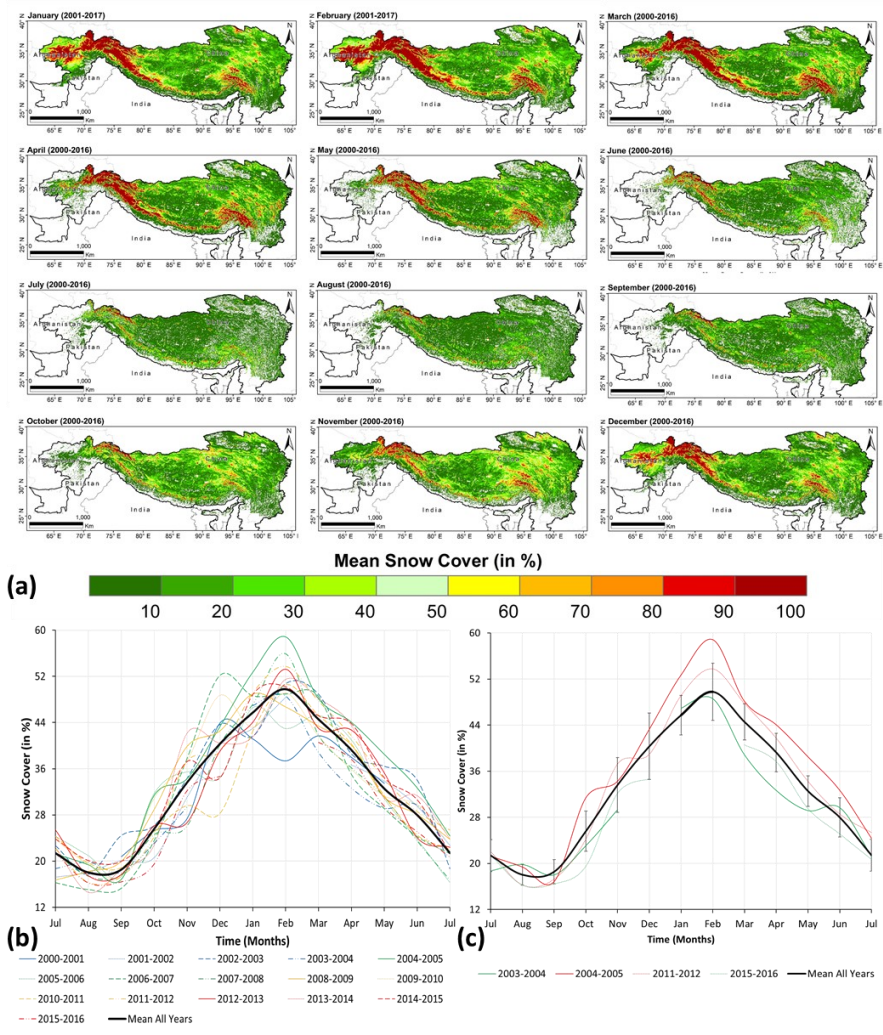
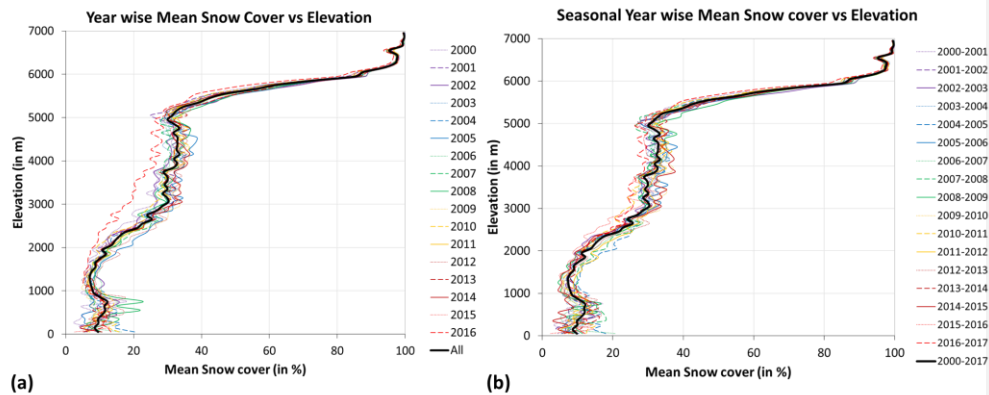


Fig. 1. The spatial distribution of MODIS Terra derived (a) monthly mean snow cover (in percent), (b) the total duration of the presence of snow cover (in percent) out of 204 months, and (c) the presence of snow cover above 80% (total months out of 204 months) during March 2000 to February 2017 over the HKH region



1270 Fig. 2. The monthly spatial distribution of MODIS derived snow cover (in percent) over the HKH region during 2000-2017: (a) monthly maps, (b) monthly variability over the years and (c) monthly variability over the early phase (2003-04, 2004-2005) and later phase (2011-2012, 2015-16), compared to average for the entire study period (2000-2017).

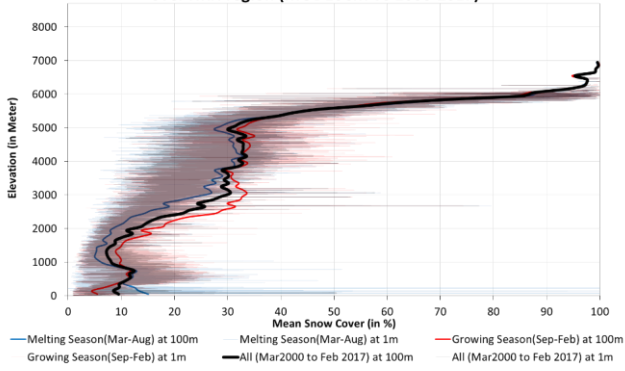


1275 Fig. 3. The hypsographic curves of (a) year-wise mean snow cover (in percent) for 2000-2016 and (b) Seasonal year-wise (March to Feb) snow cover (in percent) for 2000-2017, respectively, over HKH region. Note, the seasonal average of snow cover for year 2016 is lower because of missing data for the months of January and February.

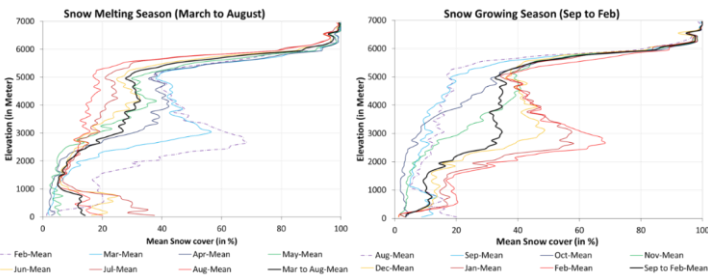
1280

1285

Season wise Hypsographic curves of Mean Snow Cover percentage over HKH region (MOD10CM v6 2000-2017)

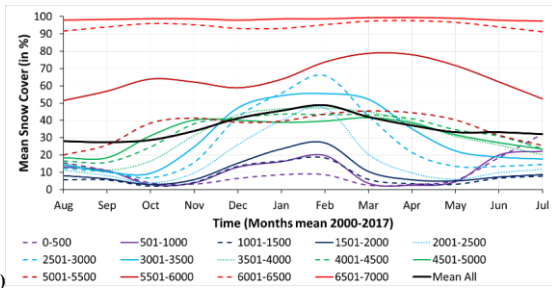


(a)



1290

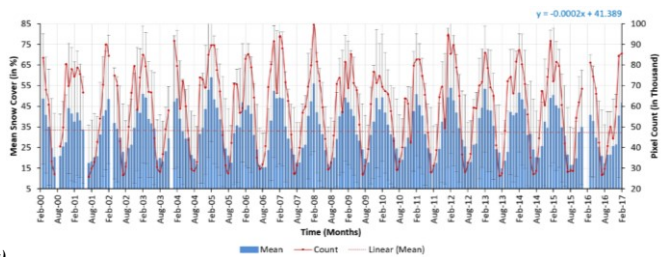
(b)



(c)

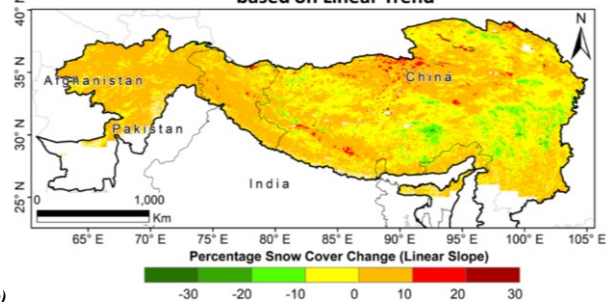
Fig. 4. (a) The mean snow cover hypsographic curves during 2000 to 2017 over HKH region: (a) seasonal curves for accumulating season (red line), melting season (blue line) and all season (black line), (b) monthly composites (in percent) during the snow melting and accumulating seasons. (c) The variability of mean snow cover over months (at different altitudes, <5500m) show starting of decline in snow-cover from the month of March onwards (black line is average).

1295



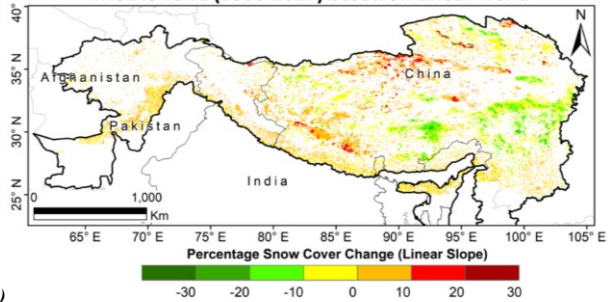
(a)

Snow Cover Percentage Change, MODIS Terra (2000-2017) based on Linear Trend



(b)

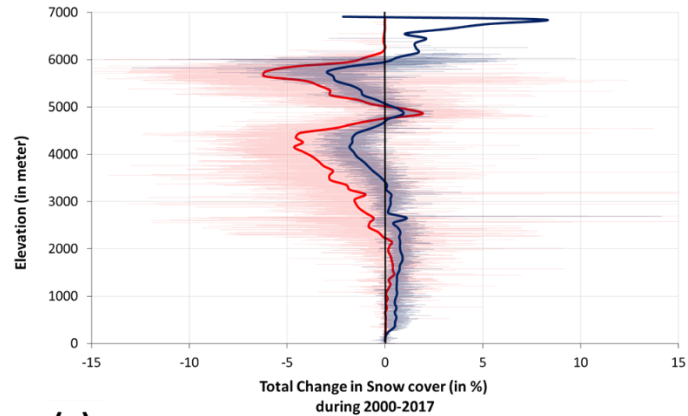
Snow Cover Percentage Change over Significant Region only, MODIS Terra (2000-2017) based on Linear Trend



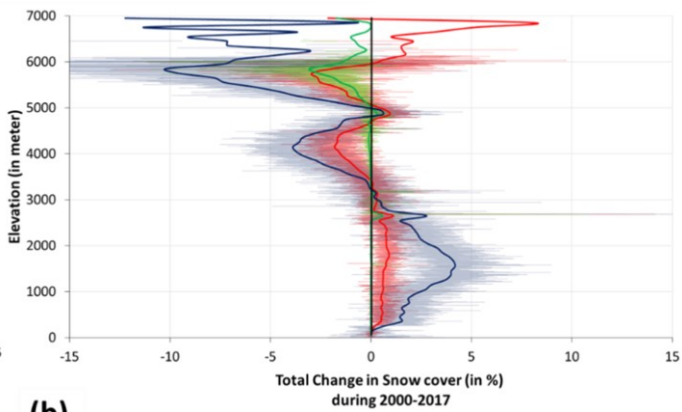
(c)

Fig. 5.(a) The time series analysis of monthly mean MODIS snow cover during 2000 to 2016, over the HKH region. The snow cover variability (percentage change) was derived from monthly MODIS Terra data during 17 years (March 2000 to February 2017) for (b) the entire HKH region, and (c) statistically significant sub-regions of HKH region only.

1300



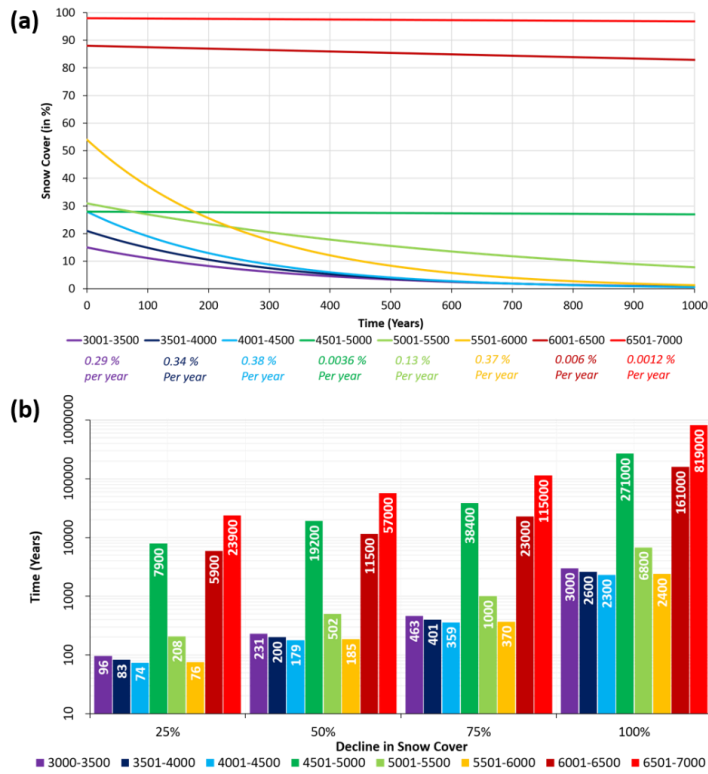
(a) — Percentage change at 1m SIG only — Percentage change at 100m SIG only
 — Percentage change at 1m all HKH — Percentage change at 100m all HKH



(b) — LIN Slope at 1m interval — TS Slope at 1m interval — MK at 1m interval
 — LIN Slope at 100m interval — TS Slope at 100m interval — MK at 100m interval

Fig. 6. The altitude-wise trend analysis (hypsographic curves) for: (a) Snow cover change (in percent) derived from the linear fit (pearson product moment correlation, LIN) over the entire HKH region (black curve) and statistically significant trend regions only (red curve), (b) The linear fit model (red curve) over the HKH region (LIN) is compared with the median trend (Theil-Sen, TS) and the monotonic trend (Mann-Kendall statistics, MK, Z-score) analysis.

1305



1310 Fig. 7. The results from linear trend analysis of Snow Cover change (mainly reduction) during 2000-2017, and in subsequent years, over the HKH region and where the trend was found to be statistically significant (95% CI).

Table 1. Mean snow cover (%) for different altitudes, derived from composites of individual months for the study period (March 2000 to February 2017) over the HKH region.

Elevation	0-500	501-1000	1001-1500	1501-2000	2001-2500	2501-3000	3001-3500	3501-4000	4001-4500	4501-5000	5001-5500	5501-6000	6001-6500	6501-7000	Average
Aug	15.46	13.11	5.68	7.97	11.01	12.18	14.21	15.07	16.45	18.3	20.11	51.4	91.69	98.03	27.91
Sep	10.88	10.94	5.55	6.08	8.08	10	10.16	11.15	15.62	18.31	25.78	56.86	94.03	98.44	27.28
Oct	3.71	2.81	1.97	2.85	3.79	6.7	9.29	16.5	24.55	31.03	38.43	63.86	95.94	98.83	28.59
Nov	2.98	3.91	4.11	5.7	9.56	15.69	24.65	31.23	37.97	40.08	41.31	62.1	95.3	98.77	33.81
Dec	6.32	12.97	13.3	15.12	25.92	41.8	47.17	43.22	41.46	39.96	38.85	58.79	93.22	97.98	41.15
Jan	8.47	16.16	16.33	23.36	39.91	55.7	54.23	46.67	43.53	38.74	39.53	63.67	93.16	98.75	45.59
Feb	8.46	19.72	18.2	26.86	47.27	65.98	55.46	47.04	43.19	39.49	43.61	73.68	95.3	98.77	48.79
Mar	2.33	3.66	5.86	10.39	20.34	42.59	52.15	44.95	43.11	41.53	45.41	78.71	97.3	99.41	41.98
Apr	2.83	2.49	3.41	5.58	9.53	21.38	35.07	39.29	40.87	38.37	44.41	77.92	97.62	99.5	37.02
May	5.26	4.59	3.07	4.91	5.86	13.3	22.23	30.76	34.5	31.58	40.22	71.66	96.62	99.06	33.12
Jun	18.51	19.99	6.53	7.22	9.7	13.32	18.68	25.71	30.79	27.02	31.38	62.17	94.08	97.97	33.08
Jul	32.21	22.18	7.69	8.55	11.72	14.44	17.54	19.98	23.44	23.3	25.52	52.37	91.23	97.49	31.98
All Months	9.79	11.04	7.64	10.38	16.89	26.09	30.07	30.96	32.96	32.31	36.21	64.43	94.62	98.58	35.86

1315

Table 2. Zonal analysis of yearly mean snow cover (%) for 2000 to 2016 period.

Years	Zone - 1	Zone - 2	Zone - 3	Zone - 4	Zone - 5
2000	11	36	13	19	11
2001	12	38	12	16	9
2002	14	38	16	17	7
2003	15	40	13	16	6
2004	13	40	11	18	8
2005	17	42	16	21	11
2006	19	42	15	17	8
2007	17	35	13	16	8
2008	15	38	14	21	10
2009	17	43	13	18	8
2010	11	39	11	15	6
2011	14	38	13	17	8
2012	18	39	14	18	9
2013	15	39	16	18	7
2014	15	39	14	17	7
2015	15	42	16	15	6
2016	6	30	9	14	6
All Yrs	14.4	38.7	13.5	17.2	7.9

Table 3. Zonal and Altitudinal (at 500m interval) distribution of Snow Cover (%) over the HKH region.

Elevation (in m)	SCP_Z1 (60°-70°E)	SCP_Z2 (70°-80°E)	SCP_Z3 (80°-90°E)	SCP_Z4 (90°-100°E)	SCP_Z5 (100°-105°E)	All Zone HKH
0-500	17.30	2.53	7.56	8.25		8.91
501-1000	24.93	2.73	3.41	6.20	14.84	10.42
1001-1500	16.57	4.71	2.21	4.84	8.69	7.40
1501-2000	15.83	13.97	5.40	7.33	5.72	9.65
2001-2500	32.31	29.49	5.50	10.00	7.28	16.92
2501-3000	56.29	47.11	17.00	10.70	8.61	27.94
3001-3500	67.22	56.11	21.50	14.04	10.25	33.82
3501-4000	72.92	61.63	17.33	19.46	16.39	37.55
4001-4500	77.83	63.08	7.46	21.53	26.28	39.24
4501-5000	82.50	60.47	26.78	29.35	48.57	49.53
5001-5500		58.32	28.67	46.80	85.59	54.85
5501-6000		76.45	81.67	75.55	98.49	83.04
6001-6500		98.44	97.00	93.41		96.28
6501-7000		99.94		96.26		98.10
	46.37	48.21	24.73	31.69	30.06	37.01

1335

1340

1345 Table 4. The zonal changes in snow cover (in percent), derived from the linear fit (LIN).

Zone Name	Pixel Count (Snow Cover Area)	Minimum SCPC	Maximum SCPC	Mean SCPC	STD
Zone-1	15297	-8.62	11.44	1.45	2.20
Zone-2	19516	-30.04	71.71	1.44	3.51
Zone-3	33368	-23.99	76.41	0.34	4.45
Zone-4	49343	-98.30	97.98	-0.99	5.76
Zone-5	17624	-26.19	42.54	-1.97	4.11

1350 Table 5. The zonal changes in snow cover (in percent) at 500m elevation interval, derived from the linear fit (LIN).

Elevation (in m)	Zone 1 (60°-70°E)	Zone 2 (70°-80°E)	Zone 3 (80°-90°E)	Zone 4 (90°-100°E)	Zone 5 (100°-105°E)	All Zone HKH
0-500		0.04	0.00	0.02		0.32
501-1000	2.12	0.12	0.05	0.02	-1.45	0.64
1001-1500	1.80	0.87	0.22	0.29	-1.28	0.66
1501-2000	1.08	2.04	0.44	0.40	-0.32	0.84
2001-2500	0.75	1.90	0.68	0.18	-0.11	0.77
2501-3000	1.08	0.88	0.54	-0.31	-0.33	0.34
3001-3500	2.86	0.11	-0.02	-1.27	-0.45	0.22
3501-4000	4.64	0.56	-1.00	-1.70	-1.66	-0.76
4001-4500	4.85	0.46	-0.23	-1.50	-6.38	-1.37
4501-5000	3.65	1.50	1.16	-0.01	-11.18	0.39
5001-5500		1.12	-0.46	-3.63	-4.27	-0.94
5501-6000		-0.13	-2.65	-2.26	3.75	-1.89
6001-6500		3.84	2.05	2.02		2.43
6501-7000		9.91	2.83	2.54		4.62