

Reflection of low-frequency fast magnetosonic waves at the local two-ion cutoff frequency: Observation in the plasmasphere

Geng Wang^{1,2}, Mingyu Wu¹, Guoqiang Wang¹, Sudong Xiao¹, Irina Zhelavskaya^{3,4}, Yuri Shprits^{3,4}, Yuanqiang Chen², Zhengyang Zou⁵, Zhonglei Gao^{6,2}, Wen Yi², and Tielong Zhang⁷

¹Harbin Institute of Technology, Shenzhen 518055, China

²Key Laboratory of Geospace Environment, University of Science and Technology of China, Chinese Academy of Sciences, Hefei 230026, China

³Helmholtz Centre Potsdam, GFZ German Research Centre for Geosciences, Potsdam, Germany

⁴Institute of Physics and Astronomy, University of Potsdam, Potsdam, Germany

⁵State Key Laboratory of Lunar and Planetary Sciences, Macau University of Science and Technology, Macao 999078, PR China

⁶School of Physics and Electronic Sciences, Changsha University of Science and Technology, Changsha 410114, China

⁷Space Research Institute, Austrian Academy of Sciences, Graz 8042, Austria

Correspondence: Geng Wang (wanggeng@hit.edu.cn); Tielong Zhang (tielong.zhang@oeaw.ac.at)

Abstract. We investigate the reflection of low-harmonic fast magnetosonic (MS) waves at the local two-ion cutoff frequency (f_{cutHe^+}). By comparing the wave signals of the two Van Allen Probes, a distinct boundary where wave energies cannot penetrate inward are found in time-frequency domain. The boundary is identified as the time series of local f_{cutHe^+} . For a certain frequency, there exists a spatial interface formed by f_{cutHe^+} , where the incident waves should be reflected. The waves with small incident angles are more likely to penetrate the thin layer where the group velocity reduces significantly, and then slow down in a period of several to tens of seconds before the reflection process complete. The cutoff reflection scenario can explain the intense outward waves observed by Probe-A. These results of MS reflection at f_{cutHe^+} may help to predict the global distribution of MS waves and promote the understanding of wave-particle dynamics in the radiation belt.

1 Introduction

Fast magnetosonic (MS) waves are a type of electromagnetic emission commonly observed in the radiation belts. These waves generally range from the hydrogen gyrofrequency (f_{H^+}) to the lower hybrid resonance frequency (f_{LH}) (Boardsen et al., 1992) and often exhibit harmonic structures at approximately the integral times of f_{H^+} in high-resolution spectra (Gurnett, 1975; Perraut et al., 1982; Balikhin et al., 2015). It is suggested that the free energy of the ring current hot protons excites the harmonic waves via the ion Bernstein instability (Gary et al., 2010; Liu et al., 2011; Min et al., 2018; Liu et al., 2018a). In the inner magnetosphere, MS waves normally have quasi-linear polarization (Curtis and Wu, 1979; Němec et al., 2005; Laakso et al., 1990) and have quasi-perpendicular wave vectors that account for the equatorial confinement (Russell et al., 1970; Zou et al., 2019). In recent years, MS waves have been considered to have the potential for heating electrons between the keV and MeV energy ranges via the Landau resonance (Horne et al., 2007), the transit time scattering (Summers and Ma, 2000; Bortnik

and Thorne, 2010) or the bounce resonance (Shprits, 2016; Tao and Li, 2016). Similar mechanisms can also result in a parallel
20 acceleration and can lead to the butterfly pitch angle distribution for MeV electrons (Xiao et al., 2015; Li et al., 2016b, a; Lei
et al., 2017; Yang et al., 2017).

Recent studies found that the frequency of the wave peak occurrence increases from approximately $2 f_{H^+}$ at $2 R_E$ to $21 f_{H^+}$
at $5 R_E$ (Boardsen et al., 2016). Previous observations have demonstrated the propagation of MS waves in the radiation belt
(Santolík et al., 2002; Su et al., 2017). The high harmonics with a few hundred Hz that are generated in the plasmasphere, can
25 penetrate into the low altitude of approximately 700 km (Gulelmi et al., 1975; Santolík et al., 2016). Additionally, Chen and
Thorne (2012) considered the perpendicular propagation in the central symmetrical medium and predicted the trapping of MS
waves in the vicinity of the plasmopause, which has been supported by subsequent observations (Ma et al., 2014; Yuan et al.,
2019). A systematic study by Posch et al. (2015) revealed a wide MLT distribution, both inside and outside the plasmopause.
Furthermore, Liu et al. (2018b) found that the multiple fine-scale of density irregularities where the WKB approximation is
30 violated also effectively blocked MS propagation. Teng et al. (2019) further revealed a wide distribution of MS waves below
 f_{H^+} , with a higher intensity in the high-density afternoon section.

Theoretically, if the background plasma consists of at least two ion components, then the R-X mode waves below f_{H^+} should
approach the cutoff frequency, which is dependent on the ion abundance ratios and magnetic field, and is independent on either
wave normal angle or plasma density (Smith and Brice, 1964; Stix, 1992). The refractive index and wavenumber are close to
35 zero near the cutoff frequency, and thus the wave should be reflected as a consequence of Snell' law. Previous studies have
demonstrated the reflection of hiss waves in the high latitude region (Gurnett and Burns, 1968; Santolík and Parrot, 1999; Chen
et al., 2017). To date, there is a lack of evidence for the reflection of MS waves near the local two-ion cutoff frequency (or the
helium cutoff frequency, referred to as f_{cutHe^+}) in the outer radiation belt (or in the vicinity). We present direct evidence for
such a reflection process in the current study.

40 2 Data and Methods

The data of two Van Allen Probes were used to analyze the wave behavior (Mauk et al., 2013). 64 Hz magnetic field data from
the triaxial fluxgate magnetometer (MAG) of the Electric and Magnetic Field Instrument and Integrated Science (EMFISIS)
suite (Kletzing et al., 2013) were processed through the fast Fourier transform (FFT, without detrending) and using the method
of singular value decomposition (SVD) (Santolík et al., 2003), to obtain the wave normal angle and wave ellipticity. The 32 Hz
45 electric field data from the Electric Field and Waves (EFW) instrument (Wygant et al., 2013) were used. As there are only two
available components, the third component was estimated based on $\mathbf{E} \cdot \mathbf{B} = 0$. The FFT was performed on the electric field and
magnetic field (resampled to 32 Hz) to obtain the cross-power spectra, and the Poynting vector was then obtained (Santolík
et al., 2010).

The electron density n_e which was derived from the upper hybrid frequency (Kurth et al., 2015) measured by EMFISIS
50 HFR, the ambient magnetic field B_0 which was measured by EMFISIS MAG, and the proton (H^+) flux data measured by the
Helium, Oxygen, Proton, and Electron (HOPE) instrument (Funsten et al., 2013) and by the Radiation Belt Storm Probes Ion

Composition Experiment (RBSPICE) instrument (Mitchell et al., 2013) were used for the calculation of growth rates.. The RBSPICE fluxes were divided by a factor of 3 to eliminate the mismatch with HOPE fluxes (Min et al., 2017; Kistler et al., 2016). Following the works of Kennel (1966) and Chen et al. (2010b), we can evaluate the wave temporal growth rate:

$$55 \quad \gamma = \frac{D^{(1)}}{\partial D^{(0)}/\partial \omega}, \quad (1)$$

and the corresponding convective growth rate:

$$K = \frac{\gamma}{|\mathbf{V}_g|}. \quad (2)$$

Here, $D^{(0)}$ and $D^{(1)}$ are the real and imaginary parts of the dispersion relation (Chen et al., 2010b, a). $D_s^{(1)}$ depends on the phase space density F and its deviation with respect to energy and pitch angle. The technique details follow Su et al. (2018);

60 Liu et al. (2018a); Wang et al. (2019).

Simulations were carried out based on a raytracing code, where the transformation of the coordinate systems followed Horne (1989), and the adaptive step size was derived by restricting the deviation between the locally calculated wavenumber and the integrated wavenumber. Two kinds of plasma conditions were used for comparison. The first condition combined the Plasma density in the Inner magnetosphere Neural network-based Empirical (PINE) density model (Zhelavskaya et al., 2016, 2017), and the TS05 magnetic field model (Tsyganenko and Sitnov, 2005). In the second condition, the observed n_e and B_0 were simply replicated in the MLT to obtain the central symmetric two-dimensional distributions.

3 Observation of the Wave Reflection

Figure 1 gives an overview of the MS wave event on 01 March 2017. At 11:35 UT, both Probe-A and Probe-B started to receive two groups of intense hydrogen band wave signals with several continuous patches: one approximately 4.0 – 7.0 Hz and the other approximately 8.0 – 14.0 Hz. The doubles of the peak frequencies of each wave patch in the lower frequency group match well with the peak frequencies of wave patches in the higher frequency group (black and white diamonds in 1a and 1e), indicating that the two groups of waves belong to the first harmonics and second harmonics, respectively. The frequency of each patch increases slightly within half an hour, the time scale of which is significantly larger than the rising tone structure (Fu et al., 2014), indicating its association with the injection of the wave sources, rather than nonlinear generation. A sharp low boundary can be found just above the helium gyrofrequency (f_{He^+}), indicating the existence of the f_{cutHe^+} . From Figure 1b and 1f, the plasma density n_e of approximately 2000 cm⁻³ indicates the immersion of probes inside the deep plasmasphere. From Figure 1c and 1g, the enhancements of hot H⁺ (tens of keV) starting at 12:00 UT (beyond $L \sim 3.5$). These hot H⁺ can lead to a positive convective growth rate for the low harmonics, in particular for the first harmonics in the range 4.0 – 7.0 Hz (Figure 1d), at a quasi-perpendicular wave normal angle ($\psi = 89.5^\circ$ here). This indicates a potential source region for the waves observed in the inner L -shell. No waves can be observed in the region of positive convective growth rates, as the values of growth rates are in the small magnitude of approximately 10⁻⁷. This region may be close to the source region of the waves,

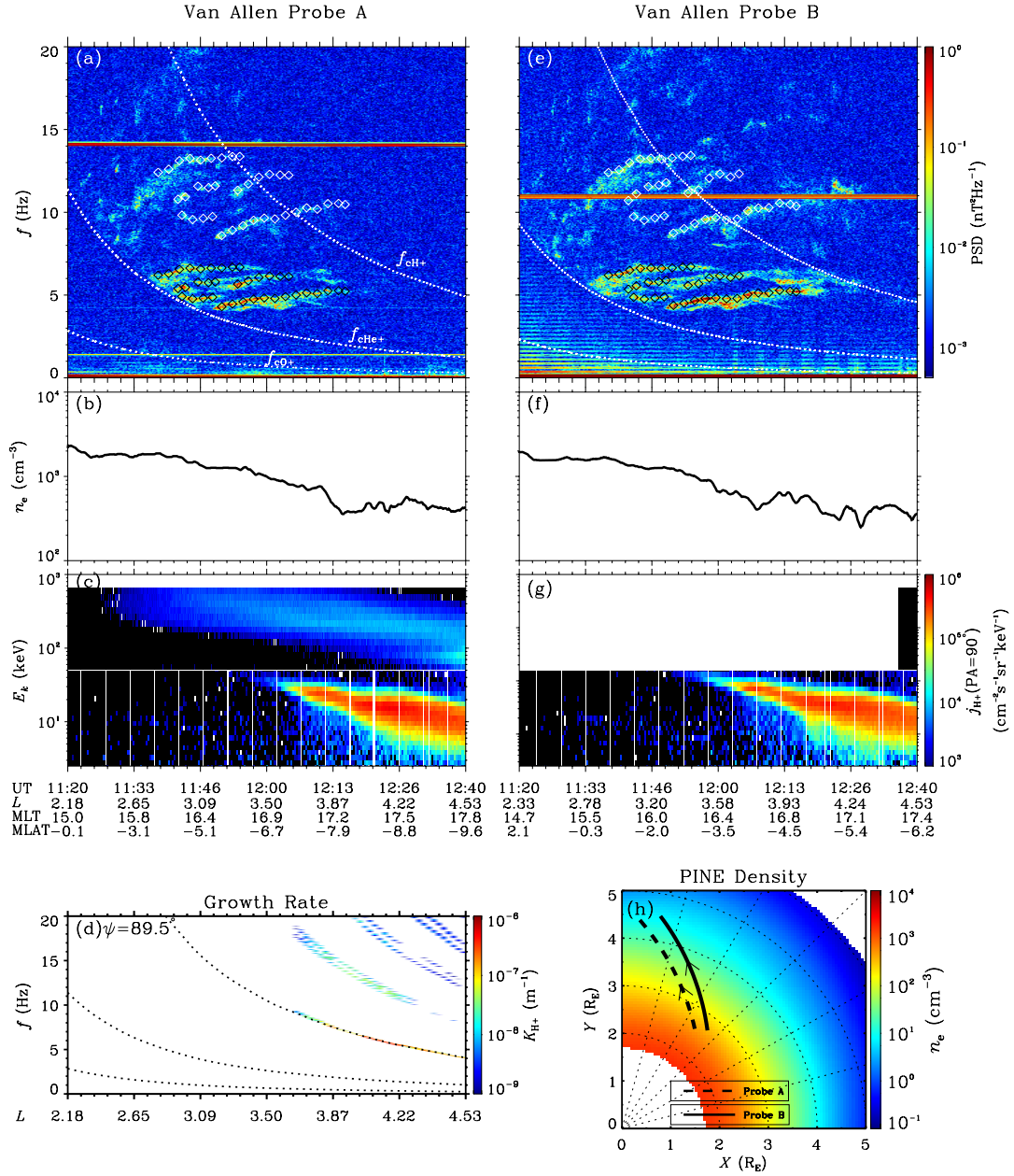


Figure 1. Overview of the MS wave event on 01 March 2017. (a,e) Magnetic field power spectral density PSD. White dashed lines trace the local gyrofrequencies of proton (f_{cH+}), helium (f_{cHe+}) and oxygen (f_{cO+}). The black diamonds mark the frequencies of the peak PSD for each patch of the fundamental waves, while the frequencies of the white diamonds are double those of the black diamonds. (b,f) Electron number density n_e . (c,g) Energy-dependent H^+ differential fluxes j_{H^+} at a 90° pitch angle. (d) Convective growth rates for MS waves at a 89.5° wave normal angle. (h) Global distribution of the electron number density from PINE model, in the equatorial plane of the SM coordinate. The satellite trajectories are drawn as thick dashed and solid lines.

2017-03-01 Probe A

2017-03-01 Probe B

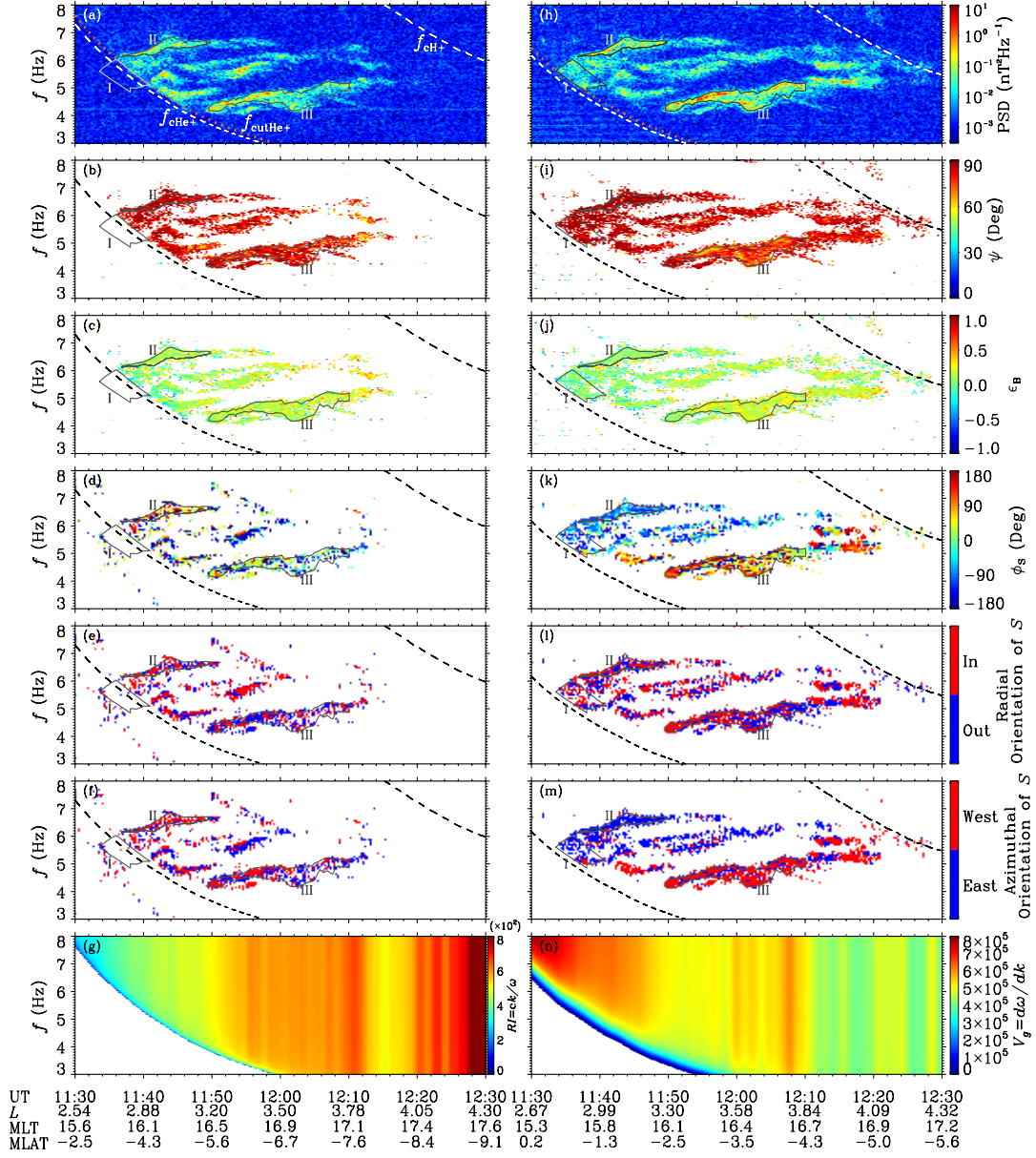


Figure 2. Time-frequency distributions of wave properties. (a,h) Magnetic field power spectral density PSD. The red dotted lines mark the lowest boundary (potential helium cutoff frequencies f_{cutHe^+}) of the visible waves. The dashed lines trace the local H^+ and He^+ gyrofrequencies. The grey closed curves mark the three selected regions in time-frequency domain. (b,i) Wave normal angle ψ (unifying the two field-aligned orientations). (c,j) Magnetic ellipticity ϵ_B . (d,k) Azimuthal angle of the Poynting flux ϕ_S . 0° represents away from the Earth. The angle increases in a counterclockwise direction. (e,l) Radial orientation of the Poynting flux. (f,m) Azimuthal orientation of the Poynting flux. (g) Refractive index RI for the MS mode (at $\psi = 90^\circ$). (n) Group velocity V_g for the MS mode (at $\psi = 90^\circ$).

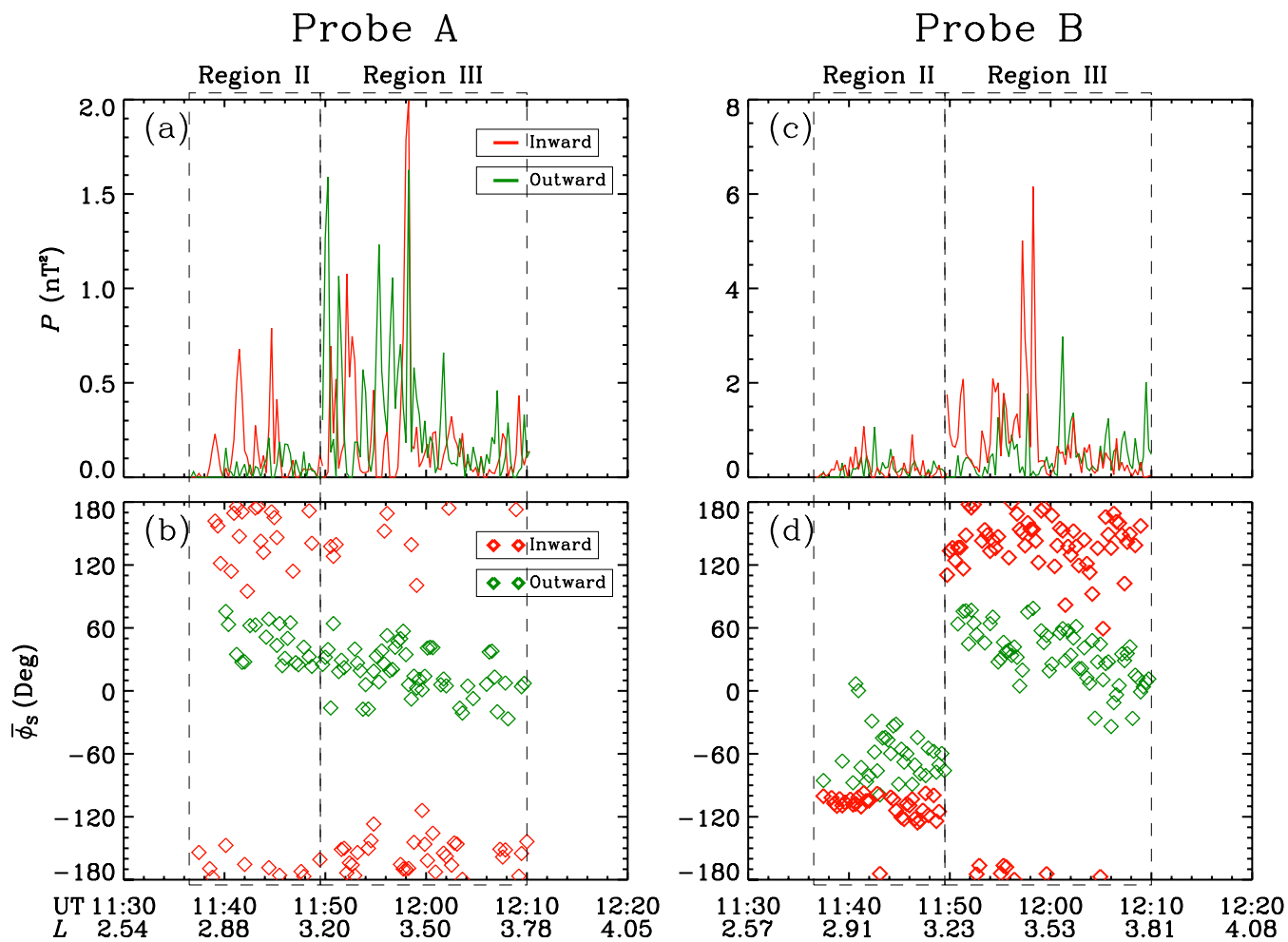


Figure 3. Quantitative comparison of wave properties between Probe-A and Probe-B. (a,c) Total magnetic field power P . (b,d) Spectrum-weighted averaged azimuthal angle of Poynting flux $\bar{\phi}_s$.

and the free energy have been significantly released at the time the satellite arrived. During the wave period, both probes were located at $|\text{MLAT}| \sim 0.5^\circ - 8.0^\circ$, $\text{MLT} \sim 15.0 - 17.0$ and $L \sim 2.2 - 4.0$, i.e., near the equatorial plane of the afternoon sector. Figure 1h presents the global distribution of the density predicted by PINE model, and the satellite trajectories during 11:30
85 UT – 12:40 UT, in the equatorial plane of the solar magnetosphere (SM) coordinate. The separation of the two satellites is less than $0.5R_E$ during the wave period, allowing a study of wave propagation in a small scale by comparative observation.

The main parameters of properties for the first harmonics are presented in Figure 2. In general, the patterns of the intense waves in time-frequency domain are similar at locations of the two probes (Figure 2a and 2h), indicating the source region of the waves recorded by the two probes were approximately the same (otherwise the patterns should be significantly different).
90 The wave normal angles ψ are larger than 60° (Figure 2n and 2i), and the ellipticities $|\epsilon_B|$ are less than 0.3 (Figure 2c and 2j), further confirm that they are MS waves. From Figure 2d and 2k, distinct differences in the azimuthal angles of the Poynting flux ϕ_S can be found for waves with different frequencies, suggesting different propagation paths for these waves. To investigate the cutoff reflection, three regions are selected in the time-frequency domain.

As shown by the red dotted lines in Figure 2a and 2h, there exist an obvious boundary at the lowest frequencies of the
95 recognizable waves (PSD threshold is $10^{-2} \text{ nT}^2\text{Hz}^{-1}$) for each probe, with a constant proportion of the local f_{cH^+} (~ 0.26 times). Region-I is determined by the two boundaries observed by the two probes. Within Region-I the moderate waves were detected by Probe-B but no signals were detected by Probe-A. This phenomenon was most probably a consequence of the reflection near the cutoff frequencies, i.e., near the observed boundaries. Assuming a two-ion plasma, the ion abundance ratios can therefore be estimated ($\eta_{H^+} = 98.5\%$ and $\eta_{He^+} = 1.5\%$ here), and the dispersion relations can be obtained (for
100 reasonability of this approach please see Appendix A). The distributions of refractive index $\text{RI} = ck/\omega$ and wave group velocity $V_g = d\omega/dk$ are then calculated. As shown in Figure 2g, RI decreases sharply near the predicted cutoff frequencies, which should lead to the significant deflection of the wave vector according to Snell's law. From 2n, there exists a narrow layer where V_g decreases, which will substantially restrict the wave propagation.

Region-II and Region-III are selected, according to the obvious difference in the direction of the Poynting flux for each probe
105 (Figure 2d and 2k). For Region-II, most of the waves of Probe-A were oriented westward (Figure 2f), while the waves of Probe-B were mainly oriented eastward (Figure 2m). This suggests that the upstream waves were between the MLT of each probe. From Figure 2e and 2f, some waves in Region-III measured by Probe-A exhibit prominent outward (also shown in Figure 3a) and westward orientations, in particular during 11 : 50 – 11 : 52 UT and during 11 : 53 – 11 : 58 UT. In the meanwhile, the inward and westward waves dominate the signals of Probe-B (Figure 2l and 2m). These observations suggests that the upstream
110 waves were in east of both probes, and a substantial amount of waves had experienced reflection before they were captured as outward signals by Probe-A.

The behaviors of the waves in Region-II and Region-III are analyzed quantitatively in Figure 3. In Region-II, the intense inward waves of Probe-A have the values of $\overline{\phi_S}$ (the spectrum-weighted averaged ϕ_S) are approximately $120^\circ - 180^\circ$, while the inward and outward waves of Probe-A have the values of $\overline{\phi_S}$ approximately $-30^\circ - -130^\circ$. During most periods in the
115 beginning of Region-III, Probe-B exhibits domination of the inward waves ($\overline{\phi_S} \sim 120^\circ - 180^\circ$) in total wave powers, while the opposite results are exhibited in Probe-A ($\overline{\phi_S} \sim 0^\circ - 60^\circ$ for intense outward waves).

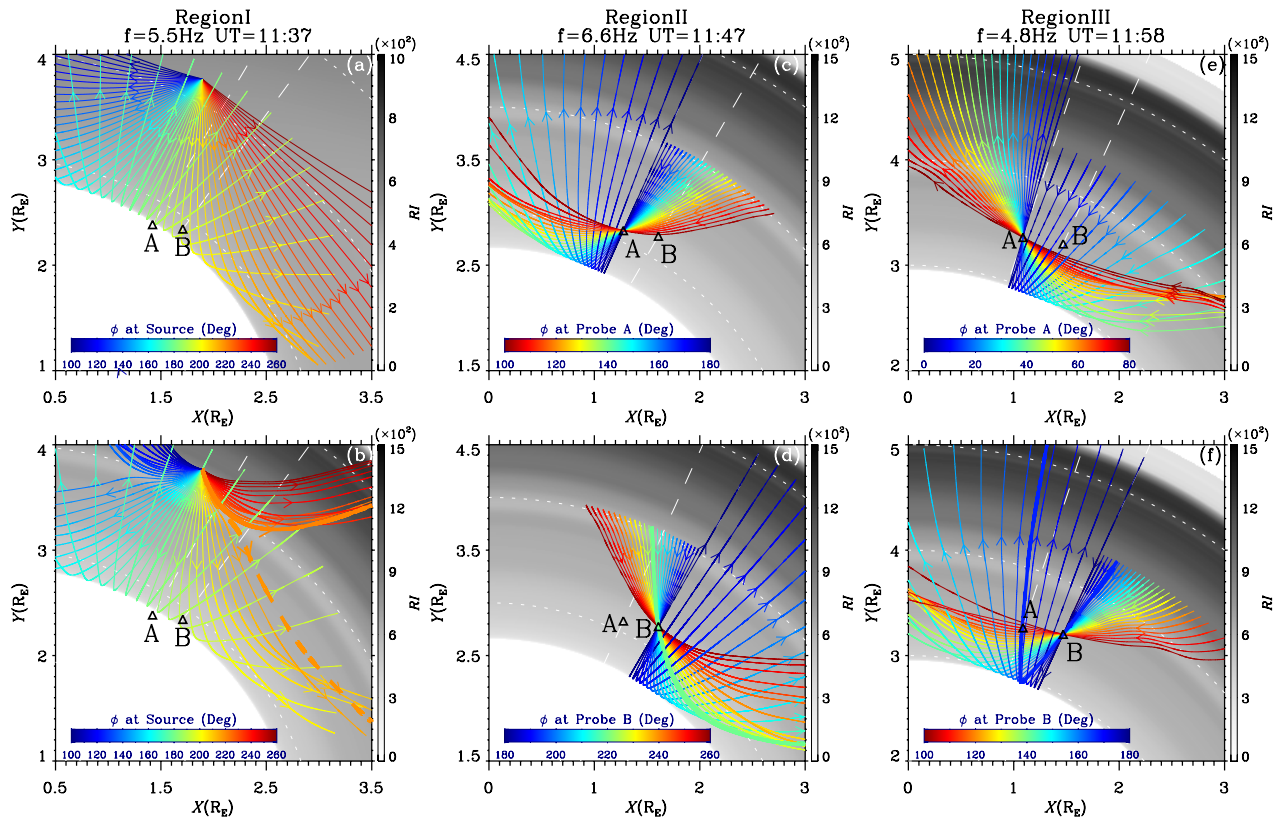


Figure 4. Raytracing simulations in the $X - Y$ (equatorial) plane of the SM coordinates. The left, middle and right columns show respectively the simulations at three different points in time-frequency domain. The first two rows show the paths of the rays that: (a,b) launched at a fixed source, (i,q) pass through Probe A and (j,r) pass through Probe B. The rainbow colorbars in each panel represent the azimuthal angles of the rays at the corresponding intersection point of rays. The black-white colorbars represent the refractive indexes of the background plasmas. The arrows denote the directions of the rays. Model magnetic field and density are used in (a), while the observed magnetic field and density are used in (b,i-j,q-r). The positions of two probes are marked by triangles. In the second row, the thicker lines denote the selected rays which undergo analyses in Figure 5

4 Simulations

For a further demonstration of the wave reflection process, raytracing simulations are performed, with three assumptions for simplification: First, the rays are confined within the equatorial plane, as the waves are observed to be no higher than 120 $|\text{MLAT}| \sim 8^\circ$ with $\psi > 60^\circ$. Second, two-ion plasma (H^+ and He^+) is considered when calculating the dispersion relation (98.5% H^+ and 1.5% He^+ here, as discussed in Section 3). Third, the direction of the wave vector and group velocity are treated as the same (proof in Appendix B).

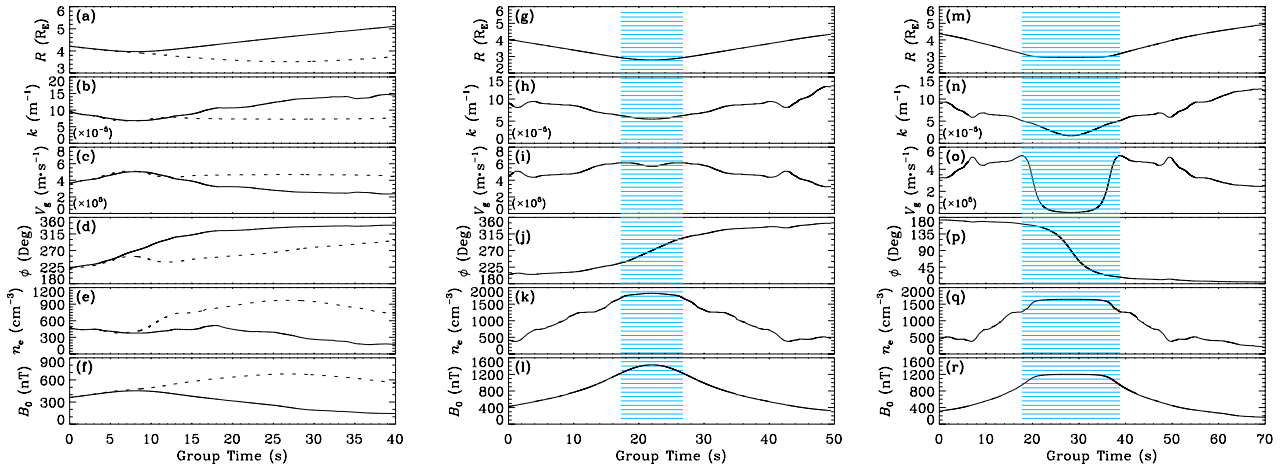


Figure 5. The time series of (c,k,s) radial distance R , (d,l,t) wavenumber k , (e,m,u) group velocity V_g , (f,n,v) local azimuthal angle ϕ , (g,o,w) electron number density n_e and (h,p,x) ambient magnetic field B_0 for the selected rays. The blue shaded areas in the middle and right columns represent the region of velocity drops.

The left column provides the simulations of the propagation scenario for the waves in Region-I. Multiple rays with different initial azimuthal angles ϕ are launched from a potential source point. The model magnetic field and density are used in the simulation in Figure 4a, while the results using observed field and density (of Probe-B) are presented in Figure 4b. In both simulations, the rays with small incident angles (approximately equivalent to the angle between ray direction and radial axis which is normal to the contour of RI) experience the sharp reflection near the cutoff frequency where the value of RI decreases to zero, while the rays with intermediate incident angles experience relatively moderate reflection with the decreasing RI which is caused by the increasing magnetic field B_0 . The difference between the two simulations appears for the rays with large incident angles. Two rays with obvious separation in Figure 4b are selected and analyzed in Figure 5a–5f. As there exist a density dip structure at $R \sim 4.0$, k decreases rapidly and lead to a rapid deflection of ϕ for both rays, the ray with a relatively larger incident angle (thick solid line) is therefore reflected, while the ray with a relatively smaller incident angle (thick dashed line) does not approach $\phi = 270^\circ$ before escaping from the density dip, and continue to propagate inward.

The middle column of Figure 4 provides the simulations for Region-II waves, using the observed B_0 and n_e . According to previous results, rays are reverse traced from Probe-A/Probe-B to the east/west to find the source, and are forward traced from Probe-A/Probe-B to the west/east to reveal the reflection, as shown in Figure 4c/4d. Similar to the results in Region-I, the rays with smaller incident angles are reflected sharply near the cutoff frequency, while the rays with intermediate or large incident angles are reflected moderately in the outer position. A ray with the critical incident angle is selected (thick green line) and analyzed in Figure 5m–5r. At the beginning (group time < 15 seconds), as B_0 increases, the k decreases gradually, leading to a moderate deflection of ϕ . The substantial reflection takes place at group time ~ 20 seconds, along with the slight reduction

of V_g , indicating that the ray propagates into the narrow layer where V_g decreases (Figure 2h). From the dispersion relation (Figure A1), V_g and k dramatically reduce with f/f_{cH^+} near f_{cutHe^+} , which is a typical effect near the cutoff frequency.

The reflection scenario in the simulation of Region-III (right column) is similar to that of Region-II. Comparing Figure 4e and 4f, for the rays that can approach the satellite, the MLT extension of the source for the rays being reflected (Figure 4e) is larger than that without reflection (Figure 4f). This can explain why some outward waves measured by Probe-A are dominant in Region-III. For the further revelation of the cutoff reflection process, a ray with a small incident angle (thick blue line) is analyzed in Figure 5m–5r. At the beginning (at group time < 18 seconds), neither the variation of n_e nor that of B_0 deflect ϕ obviously. V_g increases with B_0 as a consequence of the increasing of the slope of the dispersion curve (Figure A1). At group time ~ 18 seconds, the ray slows down in the region where V_g decreases (shaded region in Figure 5m – 5r). Only the value of k maintains the rate of decreasing with time, leading to the reflection of ϕ , and the ray finally escape from the region where V_g decreases after approximately 20 seconds.

5 Conclusions and Discussions

Low-harmonic MS waves are frequently observed near the radiation belts (Balikhin et al., 2015; Boardsen et al., 2016; Teng et al., 2019) and have a potentially important dynamic influence on relativistic electrons (Maldonado et al., 2016; Yu et al., 2019). The propagation of low-harmonic MS waves is thus important because it controls the wave distribution. In the present study, the reflection of low-harmonic MS waves in the vicinity of the local two-ion cutoff frequency f_{cutHe^+} within the plasmasphere is studied. The results can be summarized as follows:

1. In the event on 01 March 2017, several wave patches were identified as the first harmonic MS waves. In a time-frequency region (Region-I) which was below the local f_{cutHe^+} for Probe-A and above local f_{cutHe^+} for Probe-B, the waves were intense for Probe-B but vanished for Probe-A. According to calculation and simulation, for waves with a certain frequency, there exists an interface in space at f_{cutHe^+} , where the refractive index (RI) decreases to zero, and incident waves should be reflected as a consequence of Snell's law. There also exists a spatial layer within which the group velocity decreases significantly, and the waves with small incident angles should be slow down for several to tens of seconds before the reflection process complete.
2. In another time-frequency region (Region-III), prominent outward waves were measured by Probe-A, while the inward waves dominated the signals of Probe-B. Simulations suggested that a certain amount of the outward waves recorded by Probe-A were previously reflected near their cutoff frequencies.
3. The results also demonstrate that there exist three factors which will lead to the decrease of RI and thus the reflection of MS waves in the plasmasphere: The structure of density dip can separate the wave paths for the waves with smaller and larger incident angles. The increase of ambient magnetic field can lead to the gradual decrease of RI and thus reflect the waves with intermediate incident angles. The waves with small incident angles can penetrate deep into the plasmasphere and be reflected near the interface of the cutoff frequency.

In Region-II, the azimuthal angles observed by Probe-B are almost perpendicular to the radial axis. The source of the rays with these angles are to the west of Probe-A from simulations. However, the observed upstream waves were in east of Probe-A. This may be due to the separation of waves by the density dip along MLT in reality, similar to the mechanism in Figure 4b.

Liu et al. (2018b) found that the multiple fine-scale density irregularities can block MS propagation. The event in the present study, however, penetrate deep into the plasmasphere, which may be because the waves are initially generated inside the plasmasphere and are not influenced by the multiple fine-scale structures. In fact, most of the waves near f_{cutHe^+} are actually reflected before their wavelengths (minimum $\lambda \sim 300$ km for the case of small incident angle according to Figure 5n) become comparable with the scales of density irregularities (generally $> 0.05 R_E$ according to Figure 1b and 1f).

For the inward propagated high-harmonic waves, with the increase in the ambient magnetic field or decrease in the plasma density, the refractive index decreases accordingly, and waves should be reflected, as studied by Chen and Thorne (2012); Ma et al. (2014); Yuan et al. (2019). For the low harmonics, the waves propagating inward in a direction close to the radial axis are more likely to penetrate deep in the plasmasphere, and be reflected by the absolute boundary formed by the local f_{cutHe^+} . As the cutoff reflection of the low-harmonic MS waves should be common, these results may help to predict the global distribution of MS waves and therefore promote the understanding of wave-particle dynamics in the outer radiation belt.

Appendix A

Here we demonstrate the reasonability of neglecting the minor content of oxygen ion in deriving the MS mode dispersion relation. In the cold plasma, the following Stix parameters are helpful to investigate the dispersion relation (Stix, 1992):

$$L = 1 - \sum_s \frac{\omega_{ps}^2}{\omega(\omega - \Omega_s)}, \quad R = 1 - \sum_s \frac{\omega_{ps}^2}{\omega(\omega + \Omega_s)}, \quad P = 1 - \sum_s \left(\frac{\omega_{ps}}{\omega} \right)^2, \quad (\text{A1})$$

here $\omega_{ps} = (n_s q_s^2 / m_s \epsilon_0)^{\frac{1}{2}}$ and $\Omega_s = q_s B / m_s$ are respectively the plasma frequency and the gyrofrequency of a particle species s .

The cutoff frequency Ω_{cut} is the frequency where the phase velocity equals to zero (Smith and Brice, 1964), and can be obtained by setting the Stix parameter L equal to zero:

$$1 - \sum_s \frac{\omega_{ps}^2}{\omega_{\text{cut}}(\omega_{\text{cut}} - \Omega_s)} = 0. \quad (\text{A2})$$

Considering the charge neutrality condition, the determination of full ion abundance ratios requires the values of at least two characteristic frequencies (except gyrofrequencies) to be known in H^+ , He^+ and O^+ plasma. However, if the O^+ abundance η_{O^+} is much lower than the H^+ abundance η_{H^+} and if the focused mode belongs to the H^+ band which has a much larger frequency than the oxygen gyrofrequency Ω_{O^+} , then we have the following relations:

$$-\frac{\omega_{\text{pH}^+}^2}{\omega(\omega - \Omega_{\text{H}^+})} \gg \frac{\omega_{\text{pO}^+}^2}{\omega(\omega - \Omega_{\text{O}^+})}, \quad \text{when } \Omega_{\text{He}^+} < \omega < \Omega_{\text{H}^+} \quad (\text{A3})$$

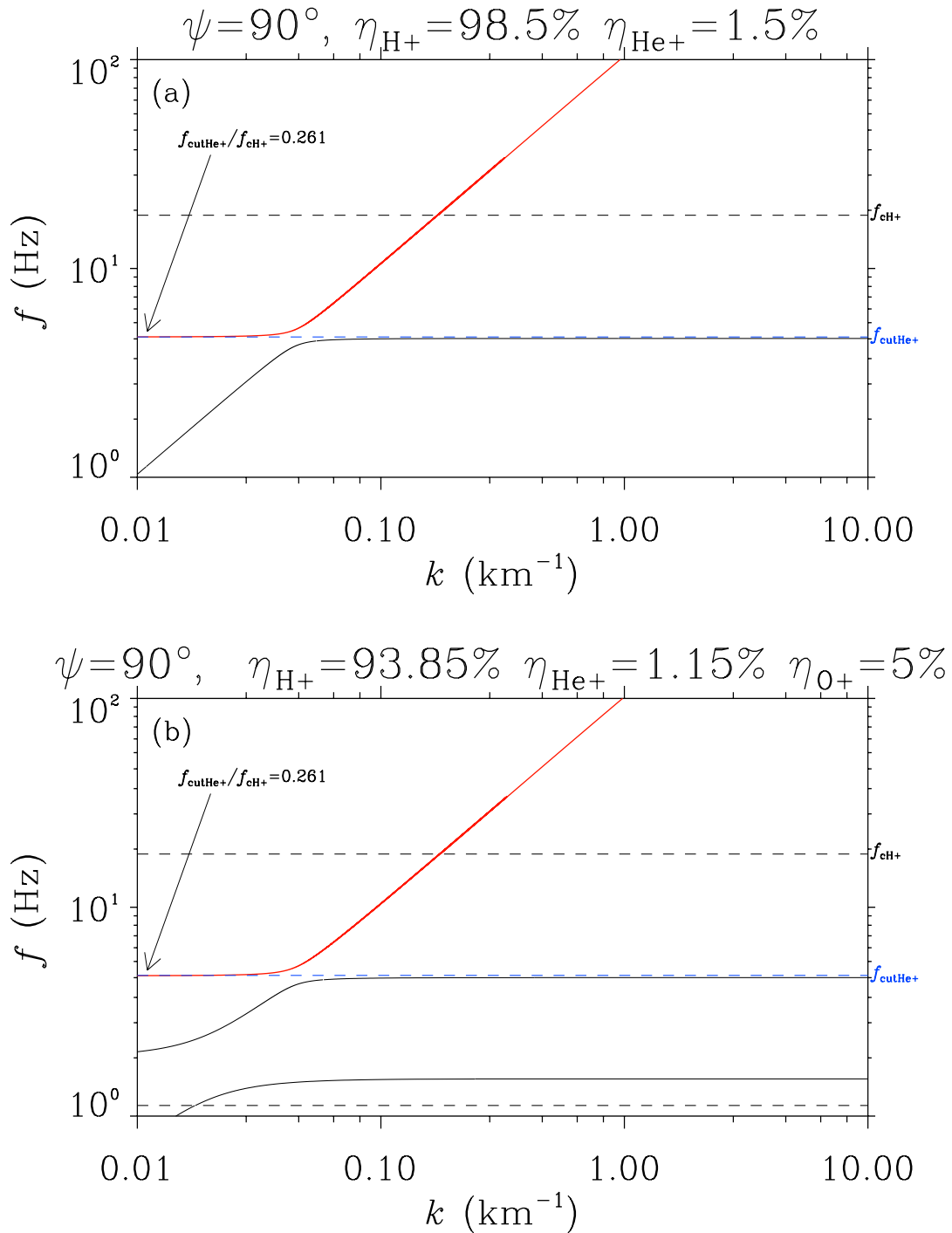


Figure A1. Dispersion relations around ion gyrofrequencies for perpendicular wave mode, under the conditions of $B_0 = 1180$ nT and $n_e = 1500$ cm^{-3} . (a) The plasma contains no O^+ ions. (b) The plasma contains 5% O^+ ions. For each case, the ratio of He^+ cutoff frequency to H^+ gyrofrequency $f_{\text{cutHe}^+}/f_{\text{cH}^+}$ is set to 0.261 (based on the event), and the abundance ratios of H^+ and He^+ are obtained accordingly. One can find that the difference in the MS mode dispersion curve (red curve) is small for the two sets of ion abundance ratios.

$$\frac{\omega_{\text{pHe}+}^2}{\omega(\omega - \Omega_{\text{He}+})} \gg \frac{\omega_{\text{pO}+}^2}{\omega(\omega - \Omega_{\text{O}+})}, \text{ when } \omega \rightarrow \Omega_{\text{He}+} \quad (\text{A4})$$

$$\frac{\omega_{\text{pH}+}^2}{\omega(\omega + \Omega_{\text{H}+})} \gg \frac{\omega_{\text{pO}+}^2}{\omega(\omega + \Omega_{\text{O}+})}, \text{ when } \Omega_{\text{He}+} < \omega < \Omega_{\text{H}+} \quad (\text{A5})$$

205

$$\frac{\omega_{\text{pH}+}^2}{\omega^2} \gg \frac{\omega_{\text{pO}+}^2}{\omega^2}, \text{ when } \Omega_{\text{He}+} < \omega < \Omega_{\text{H}+}. \quad (\text{A6})$$

Therefore, if the three-ion (H^+ , He^+ and O^+) plasma are approximated as two-ion (H^+ and He^+) plasma, i.e., the terms with oxygen plasma frequency $\omega_{\text{pO}+}$ are dropped in Equation (A1), the Stix parameters will have only a negligible change. Under such an approximation, a group of ion abundance ratios ($\eta_{\text{H}+}$ and $\eta_{\text{He}+}$) can be obtained by substituting the observed value
 210 of $\omega_{\text{cutHe}+}/\Omega_{\text{H}+}$ into Equation (A2). Consequently, the approximated dispersion relations for the modes in H^+ band can be found.

Appendix B

Here we provide the proof that the directions of the wave vector and Poynting flux are the same for a perpendicular MS wave. In the magnetized cold plasma, the frequency for a plane wave is the function of magnetic field B_0 , electron density n_e , wave
 215 normal angle ψ and wavenumber k :

$$\omega = \omega(B_0, n_e, \psi, k). \quad (\text{B1})$$

Following Stix (1992), the group velocity can be expressed as:

$$\mathbf{v}_{\mathbf{g}} = \frac{\partial \omega}{\partial \mathbf{k}} = \hat{\mathbf{k}} \frac{\partial \omega}{\partial k} + \hat{\psi} \frac{1}{k} \frac{\partial \omega}{\partial \psi}, \quad (\text{B2})$$

and the angular difference α of the two orthogonal directions can be expressed as:

$$220 \quad \tan \alpha = \frac{\frac{1}{k} \frac{\partial \omega}{\partial \psi}}{\frac{\partial \omega}{\partial k}} = -\frac{1}{k} \frac{\partial k}{\partial \psi} = -\frac{1}{\mu} \frac{\partial \mu}{\partial \psi}. \quad (\text{B3})$$

Here μ is the refractive index. Expressing the dispersion relation in the form:

$$\tan^2 \psi = -\frac{P(\mu^2 - R)(\mu^2 - L)}{(S\mu^2 - RL)(\mu^2 - P)}, \quad (\text{B4})$$

where R, L and P are the Stix parameters, and $S = (R + L)/2$. Considering a small angle β , and Expanding the left side of Equation (B4) around $\pi/2$, and considering that $\mu^2 \sim RL/S \ll P$ for the fast magnetosonic mode branch, we can obtain the
 225 following relation:

$$\tan \alpha = \frac{1}{\mu} \frac{\partial \mu}{\partial \beta} = -\beta \frac{\frac{RL}{S^2} - 1}{2\beta^2 \frac{RL}{S^2} - 1}, \quad (\text{B5})$$

here $\beta = \pi/2 - \psi$. As $\tan \alpha \sim 0$ when $\beta \sim 0$, the direction of group velocity and wave vector are the same for the perpendicular MS waves.

Author contributions. GW conceived the study and wrote the manuscript. IZ and YS provided the estimated data of density distribution. ZG
230 made contributions to wave analyses and ray-tracing code. All co-authors contributed to discussions and commented on the manuscript.

Competing interests. The authors declare that they have no conflict of interest.

Acknowledgements. The work in China was supported by NSFC grants 41774171, 41974205, 41774167, 41804157, 41904156 and 41904135. The authors also acknowledge the financial support provided by Shenzhen Science and Technology Research Program JCYJ20180306171918617 and Shenzhen Science and Technology Program (Group No. KQTD20180410161218820), and by Key Laboratory of Geospace Environment,
235 Chinese Academy of Sciences, University of Science and Technology of China. Tielong Zhang was supported by CAS Center for Excellence in Comparative Planetology. We appreciate EMFISIS, ECT, EFW and RBSPICE teams for the use of Van Allen Probes data. Data are available from the following websites: <http://emfisis.physics.uiowa.edu/Flight/>, <http://www.RBSP-ect.lanl.gov/>, <http://www.space.umn.edu/rbspew-data/> and <http://rbspice.ftcs.com/Data.html>. The magnetic field model of TS05 can be obtained from <http://geo.phys.spbu.ru/%7etsyganenko/modeling.html>.

240 References

- Balikhin, M. A., Shprits, Y. Y., Walker, S. N., Chen, L., Cornilleau-Wehrin, N., Dandouras, I., Santolik, O., Carr, C., Yearby, K. H., and Weiss, B.: Observations of discrete harmonics emerging from equatorial noise, *Nat. Commun.*, 6, 7703, <https://doi.org/10.1038/ncomms8703>, 2015.
- Boardsen, S. A., Gallagher, D. L., Gurnett, D. A., Peterson, W. K., and Green, J. L.: Funnel-shaped, low-frequency equatorial waves, *J. Geophys. Res.*, 97, 14, <https://doi.org/10.1029/92JA00827>, 1992.
- Boardsen, S. A., Hospodarsky, G. B., Kletzing, C. A., Engebretson, M. J., Pfaff, R. F., Wygant, J. R., Kurth, W. S., Averkamp, T. F., Bounds, S. R., Green, J. L., and De Pascuale, S.: Survey of the frequency dependent latitudinal distribution of the fast magnetosonic wave mode from Van Allen Probes Electric and Magnetic Field Instrument and Integrated Science waveform receiver plasma wave analysis, *J. Geophys. Res. (Space Physics)*, 121, 2902–2921, <https://doi.org/10.1002/2015JA021844>, 2016.
- 245 Bortnik, J. and Thorne, R. M.: Transit time scattering of energetic electrons due to equatorially confined magnetosonic waves, *J. Geophys. Res. (Space Physics)*, 115, A07213, <https://doi.org/10.1029/2010JA015283>, 2010.
- Chen, L. and Thorne, R. M.: Perpendicular propagation of magnetosonic waves, *Geophys. Res. Lett.*, 39, L14102, <https://doi.org/10.1029/2012GL052485>, 2012.
- Chen, L., Thorne, R. M., Jordanova, V. K., and Horne, R. B.: Global simulation of magnetosonic wave instability in the storm time magnetosphere, *J. Geophys. Res. (Space Physics)*, 115, A11222, <https://doi.org/10.1029/2010JA015707>, 2010a.
- 255 Chen, L., Thorne, R. M., Jordanova, V. K., Wang, C.-P., Gkioulidou, M., Lyons, L., and Horne, R. B.: Global simulation of EMIC wave excitation during the 21 April 2001 storm from coupled RCM-RAM-HOTRAY modeling, *J. Geophys. Res.*, 115, A07209, <https://doi.org/10.1029/2009JA015075>, 2010b.
- Chen, L., Santolik, O., Hajoš, M., Zheng, L., Zhima, Z., Heelis, R., Hanzelka, M., Horne, R. B., and Parrot, M.: Source of the low-altitude hiss in the ionosphere, *Geophys. Res. Lett.*, 44, 2060–2069, <https://doi.org/10.1002/2016GL072181>, 2017.
- 260 Curtis, S. A. and Wu, C. S.: Gyroharmonic emissions induced by energetic ions in the equatorial plasmasphere, *J. Geophys. Res.*, 84, 2597–2607, <https://doi.org/10.1029/JA084iA06p02597>, 1979.
- Fu, H. S., Cao, J. B., Zhima, Z., Khotyaintsev, Y. V., Angelopoulos, V., Santolik, O., Omura, Y., Taubenschuss, U., Chen, L., and Huang, S. Y.: First observation of rising-tone magnetosonic waves, *Geophys. Res. Lett.*, 41, 7419–7426, <https://doi.org/10.1002/2014GL061867>, 2014.
- 265 Funsten, H. O., Skoug, R. M., Guthrie, A. A., MacDonald, E. A., Baldonado, J. R., Harper, R. W., Henderson, K. C., Kihara, K. H., Lake, J. E., Larsen, B. A., Puckett, A. D., Vigil, V. J., Friedel, R. H., Henderson, M. G., Niehof, J. T., Reeves, G. D., Thomsen, M. F., Hanley, J. J., George, D. E., Jahn, J.-M., Cortinas, S., De Los Santos, A., Dunn, G., Edlund, E., Ferris, M., Freeman, M., Maple, M., Nunez, C., Taylor, T., Toczynski, W., Urdiales, C., Spence, H. E., Cravens, J. A., Suther, L. L., and Chen, J.: Helium, Oxygen, Proton, and Electron (HOPE) Mass Spectrometer for the Radiation Belt Storm Probes Mission, *Space. Sci. Rev.*, 179, 423–484, <https://doi.org/10.1007/s11214-013-9968-7>, 2013.
- 270 Gary, S. P., Liu, K., Winske, D., and Denton, R. E.: Ion Bernstein instability in the terrestrial magnetosphere: Linear dispersion theory, *J. Geophys. Res. (Space Physics)*, 115, A12209, <https://doi.org/10.1029/2010JA015965>, 2010.
- Gulelmi, A. V., Klaine, B. I., and Potapov, A. S.: Excitation of magnetosonic waves with discrete spectrum in the equatorial vicinity of the plasmopause, *Planet. Space Sci.*, 23, 279–286, [https://doi.org/10.1016/0032-0633\(75\)90133-6](https://doi.org/10.1016/0032-0633(75)90133-6), 1975.
- Gurnett, D. A.: Plasma wave interactions with energetic ions near the magnetic equator, *Tech. rep.*, 1975.

- Gurnett, D. A. and Burns, T. B.: The low-frequency cutoff of ELF emissions, *J. Geophys. Res.*, 73, 7437–7445, <https://doi.org/10.1029/JA073i023p07437>, 1968.
- Horne, R. B.: Path-integrated growth of electrostatic waves: The generation of terrestrial myriametric radiation, *J. Geophys. Res.*, 94, 8895–8909, <https://doi.org/10.1029/JA094iA07p08895>, 1989.
- Horne, R. B., Thorne, R. M., Glauert, S. A., Meredith, N. P., Pokhotelov, D., and Santolík, O.: Electron acceleration in the Van Allen radiation belts by fast magnetosonic waves, *Geophys. Res. Lett.*, 34, L17 107, <https://doi.org/10.1029/2007GL030267>, 2007.
- Kennel, C.: Low-Frequency Whistler Mode, *Phys. Fluids*, 9, 2190–2202, <https://doi.org/10.1063/1.1761588>, 1966.
- Kistler, L. M., Moukikis, C. G., Spence, H. E., Menz, A. M., Skoug, R. M., Funsten, H. O., Larsen, B. A., Mitchell, D. G., Gkioulidou, M., Wygant, J. R., and Lanzerotti, L. J.: The source of O^+ in the storm time ring current, *J. Geophys. Res. (Space Physics)*, 121, 5333–5349, <https://doi.org/10.1002/2015JA022204>, 2016.
- Kletzing, C. A., Kurth, W. S., Acuna, M., MacDowall, R. J., Torbert, R. B., Averkamp, T., Bodet, D., Bounds, S. R., Chutter, M., Connerney, J., Crawford, D., Dolan, J. S., Dvorsky, R., Hospodarsky, G. B., Howard, J., Jordanova, V., Johnson, R. A., Kirchner, D. L., Mokrzycki, B., Needell, G., Odom, J., Mark, D., Pfaff, R., Phillips, J. R., Piker, C. W., Remington, S. L., Rowland, D., Santolík, O., Schnurr, R., Sheppard, D., Smith, C. W., Thorne, R. M., and Tyler, J.: The Electric and Magnetic Field Instrument Suite and Integrated Science (EMFISIS) on RBSP, *Space. Sci. Rev.*, 179, 127–181, <https://doi.org/10.1007/s11214-013-9993-6>, 2013.
- Kurth, W. S., De Pascuale, S., Faden, J. B., Kletzing, C. A., Hospodarsky, G. B., Thaller, S., and Wygant, J. R.: Electron densities inferred from plasma wave spectra obtained by the Waves instrument on Van Allen Probes, *J. Geophys. Res. (Space Physics)*, 120, 904–914, <https://doi.org/10.1002/2014JA020857>, 2015.
- Laakso, H., Junginger, H., Schmidt, R., Roux, A., and de Villedary, C.: Magnetosonic waves above $f_c(H^+)$ at geostationary orbit: GEOS 2 results, *J. Geophys. Res.*, 95, 10 609–10 621, <https://doi.org/10.1029/JA095iA07p10609>, 1990.
- Lei, M., Xie, L., Li, J., Pu, Z., Fu, S., Ni, B., Hua, M., Chen, L., and Li, W.: The Radiation Belt Electron Scattering by Magnetosonic Wave: Dependence on Key Parameters, *J. Geophys. Res. (Space Physics)*, 122, 12,338–12,352, <https://doi.org/10.1002/2016JA023801>, 2017.
- Li, J., Bortnik, J., Thorne, R. M., Li, W., Ma, Q., Baker, D. N., Reeves, G. D., Fennell, J. F., Spence, H. E., Kletzing, C. A., Kurth, W. S., Hospodarsky, G. B., Angelopoulos, V., and Blake, J. B.: Ultrarelativistic electron butterfly distributions created by parallel acceleration due to magnetosonic waves, *J. Geophys. Res. (Space Physics)*, 121, 3212–3222, <https://doi.org/10.1002/2016JA022370>, 2016a.
- Li, J., Ni, B., Ma, Q., Xie, L., Pu, Z., Fu, S., Thorne, R. M., Bortnik, J., Chen, L., Li, W., Baker, D. N., Kletzing, C. A., Kurth, W. S., Hospodarsky, G. B., Fennell, J. F., Reeves, G. D., Spence, H. E., Funsten, H. O., and Summers, D.: Formation of energetic electron butterfly distributions by magnetosonic waves via Landau resonance, *Geophys. Res. Lett.*, 43, 3009–3016, <https://doi.org/10.1002/2016GL067853>, 2016b.
- Liu, K., Gary, S. P., and Winske, D.: Excitation of magnetosonic waves in the terrestrial magnetosphere: Particle-in-cell simulations, *J. Geophys. Res. (Space Physics)*, 116, A07212, <https://doi.org/10.1029/2010JA016372>, 2011.
- Liu, N., Su, Z., Zheng, H., Wang, Y., and Wang, S.: Prompt Disappearance and Emergence of Radiation Belt Magnetosonic Waves Induced by Solar Wind Dynamic Pressure Variations, *Geophys. Res. Lett.*, 45, 585–594, <https://doi.org/10.1002/2017GL076382>, 2018a.
- Liu, X., Chen, L., Yang, L., Xia, Z., and Malaspina, D. M.: One-Dimensional Full Wave Simulation of Equatorial Magnetosonic Wave Propagation in an Inhomogeneous Magnetosphere, *J. Geophys. Res. (Space Physics)*, 123, 587–599, <https://doi.org/10.1002/2017JA024336>, 2018b.

- Ma, Q., Li, W., Chen, L., Thorne, R. M., Kletzing, C. A., Kurth, W. S., Hospodarsky, G. B., Reeves, G. D., Henderson, M. G., and Spence, H. E.: The trapping of equatorial magnetosonic waves in the Earth's outer plasmasphere, *Geophys. Res. Lett.*, 41, 6307–6313, <https://doi.org/10.1002/2014GL061414>, 2014.
- 315 Maldonado, A. A., Chen, L., Claudepierre, S. G., Bortnik, J., Thorne, R. M., and Spence, H.: Electron butterfly distribution modulation by magnetosonic waves, *Geophys. Res. Lett.*, 43, 3051–3059, <https://doi.org/10.1002/2016GL068161>, 2016.
- Mauk, B. H., Fox, N. J., Kanekal, S. G., Kessel, R. L., Sibeck, D. G., and Ukhorskiy, A.: Science Objectives and Rationale for the Radiation Belt Storm Probes Mission, *Space. Sci. Rev.*, 179, 3–27, <https://doi.org/10.1007/s11214-012-9908-y>, 2013.
- 320 Min, K., Takahashi, K., Ukhorskiy, A. Y., Manweiler, J. W., Spence, H. E., Singer, Howard, J., Claudepierre, S. G., Larsen, B. A., Sotoc Chavez, A. R., and Cohen, R. J.: Second harmonic poloidal waves observed by Van Allen Probes in the dusk-midnight sector, *J. Geophys. Res. (Space Physics)*, 122, 3013–3039, <https://doi.org/10.1002/2016JA023770>, 2017.
- Min, K., Liu, K., Wang, X., Chen, L., and Denton, R. E.: Fast Magnetosonic Waves Observed by Van Allen Probes: Testing Local Wave Excitation Mechanism, *J. Geophys. Res. (Space Physics)*, 123, 497–512, <https://doi.org/10.1002/2017JA024867>, 2018.
- 325 Mitchell, D. G., Lanzerotti, L. J., Kim, C. K., Stokes, M., Ho, G., Cooper, S., Ukhorskiy, A., Manweiler, J. W., Jaskulek, S., Haggerty, D. K., Brandt, P., Sitnov, M., Keika, K., Hayes, J. R., Brown, L. E., Gurnee, R. S., Hutcheson, J. C., Nelson, K. S., Paschalidis, N., Rossano, E., and Kerem, S.: Radiation Belt Storm Probes Ion Composition Experiment (RBSPICE), *Space Sci. Rev.*, 179, 263–308, <https://doi.org/10.1007/s11214-013-9965-x>, 2013.
- Němec, F., Santolík, O., Gereová, K., Macúšová, E., de Conchy, Y., and Cornilleau-Wehrlin, N.: Initial results of a survey of equatorial noise emissions observed by the Cluster spacecraft, *Planet. Space Sci.*, 53, 291–298, <https://doi.org/10.1016/j.pss.2004.09.055>, 2005.
- 330 Perraut, S., Roux, A., Robert, P., Gendrin, R., Sauvaud, J. A., Bosqued, J. M., Kremser, G., and Korth, A.: A systematic study of ULF waves above F_{H^+} from GEOS 1 and 2 measurements and their relationships with proton ring distributions, *J. Geophys. Res.*, 87, 6219–6236, <https://doi.org/10.1029/JA087iA08p06219>, 1982.
- Posch, J. L., Engebretson, M. J., Olson, C. N., Thaller, S. A., Breneman, A. W., Wygant, J. R., Boardsen, S. A., Kletzing, C. A., Smith, C. W., and Reeves, G. D.: Low-harmonic magnetosonic waves observed by the Van Allen Probes, *J. Geophys. Res. (Space Physics)*, 120, 6230–6257, <https://doi.org/10.1002/2015JA021179>, 2015.
- 335 Russell, C. T., Holzer, R. E., and Smith, E. J.: OGO 3 observations of ELF noise in the magnetosphere. 2. The nature of the equatorial noise., *J. Geophys. Res.*, 75, 755–768, <https://doi.org/10.1029/JA075i004p00755>, 1970.
- Santolík, O. and Parrot, M.: Case studies on the wave propagation and polarization of ELF emissions observed by Freja around the local proton gyrofrequency, *J. Geophys. Res.*, 104, 2459–2476, <https://doi.org/10.1029/1998JA900045>, 1999.
- 340 Santolík, O., Pickett, J. S., Gurnett, D. A., Maksimovic, M., and Cornilleau-Wehrlin, N.: Spatiotemporal variability and propagation of equatorial noise observed by Cluster, *J. Geophys. Res.*, 107, 1495, <https://doi.org/10.1029/2001JA009159>, 2002.
- Santolík, O., Parrot, M., and Lefeuvre, F.: Singular value decomposition methods for wave propagation analysis, *Radio Sci.*, 38, 1010, <https://doi.org/10.1029/2000RS002523>, 2003.
- 345 Santolík, O., Pickett, J. S., Gurnett, D. A., Menietti, J. D., Tsurutani, B. T., and Verkhoglyadova, O.: Survey of Poynting flux of whistler mode chorus in the outer zone, *J. Geophys. Res. (Space Physics)*, 115, A00F13, <https://doi.org/10.1029/2009JA014925>, 2010.
- Santolík, O., Parrot, M., and Němec, F.: Propagation of equatorial noise to low altitudes: Decoupling from the magnetosonic mode, *Geophys. Res. Lett.*, 43, 6694–6704, <https://doi.org/10.1002/2016GL069582>, 2016.
- Shprits, Y. Y.: Estimation of bounce resonant scattering by fast magnetosonic waves, *Geophys. Res. Lett.*, 43, 998–1006, <https://doi.org/10.1002/2015GL066796>, 2016.
- 350

- Smith, R. and Brice, N.: Propagation in multicomponent plasmas, *J. Geophys. Res.*, 69, 5029–5040, 1964.
- Stix, T. H.: *Waves in Plasmas*, American Institute of Physics, New York, 1992.
- Su, Z., Wang, G., Liu, N., Zheng, H., Wang, Y., and Wang, S.: Direct observation of generation and propagation of magnetosonic waves following substorm injection, *Geophys. Res. Lett.*, 44, 7587–7597, <https://doi.org/10.1002/2017GL074362>, 2017.
- 355 Su, Z., Liu, N., Zheng, H., Wang, Y., and Wang, S.: Large-Amplitude Extremely Low Frequency Hiss Waves in Plasmaspheric Plumes, *Geophys. Res. Lett.*, 45, 565–577, <https://doi.org/10.1002/2017GL076754>, 2018.
- Summers, D. and Ma, C.-y.: Rapid acceleration of electrons in the magnetosphere by fast-mode MHD waves, *J. Geophys. Res. (Space Physics)*, 105, 15 887–15 896, <https://doi.org/10.1029/1999JA000408>, 2000.
- Tao, X. and Li, X.: Theoretical bounce resonance diffusion coefficient for waves generated near the equatorial plane, *Geophys. Res. Lett.*, 360 43, 7389–7397, <https://doi.org/10.1002/2016GL070139>, 2016.
- Teng, S., Li, W., Tao, X., Ma, Q., and Shen, X.: Characteristics and Generation of Low-Frequency Magnetosonic Waves Below the Proton Gyrofrequency, *Geophys. Res. Lett.*, 46, 11,652–11,660, <https://doi.org/10.1029/2019GL085372>, 2019.
- Tsyganenko, N. A. and Sitnov, M. I.: Modeling the dynamics of the inner magnetosphere during strong geomagnetic storms, *J. Geophys. Res. (Space Physics)*, 110, A03208, <https://doi.org/10.1029/2004JA010798>, 2005.
- 365 Wang, G., Zhang, T. L., Gao, Z. L., Wu, M. Y., Wang, G. Q., and Schmid, D.: Propagation of EMIC Waves Inside the Plasmasphere: A Two-Event Study, *J. Geophys. Res. (Space Physics)*, 124, 8396–8415, <https://doi.org/10.1029/2019JA027055>, 2019.
- Wygant, J. R., Bonnell, J. W., Goetz, K., Ergun, R. E., Mozer, F. S., Bale, S. D., Ludlam, M., Turin, P., Harvey, P. R., Hochmann, R., Harps, K., Dalton, G., McCauley, J., Rachelson, W., Gordon, D., Donakowski, B., Shultz, C., Smith, C., Diaz-Aguado, M., Fischer, J., Heavner, S., Berg, P., Malsapina, D. M., Bolton, M. K., Hudson, M., Strangeway, R. J., Baker, D. N., Li, X., Albert, J., Foster, J. C., Chaston, C. C., 370 Mann, I., Donovan, E., Cully, C. M., Cattell, C. A., Krasnoselskikh, V., Kersten, K., Brenneinan, A., and Tao, J. B.: The Electric Field and Waves Instruments on the Radiation Belt Storm Probes Mission, *Space. Sci. Rev.*, 179, 183–220, <https://doi.org/10.1007/s11214-013-0013-7>, 2013.
- Xiao, F., Yang, C., Su, Z., Zhou, Q., He, Z., He, Y., Baker, D. N., Spence, H. E., Funsten, H. O., and Blake, J. B.: Wave-driven butterfly distribution of Van Allen belt relativistic electrons, *Nat. Commun.*, 6, 8590, <https://doi.org/10.1038/ncomms9590>, 2015.
- 375 Yang, C., Su, Z., Xiao, F., Zheng, H., Wang, Y., Wang, S., Spence, H. E., Reeves, G. D., Baker, D. N., Blake, J. B., and Funsten, H. O.: A positive correlation between energetic electron butterfly distributions and magnetosonic waves in the radiation belt slot region, *Geophys. Res. Lett.*, 44, 3980–3990, <https://doi.org/10.1002/2017GL073116>, 2017.
- Yu, J., Li, L. Y., Cui, J., Cao, J. B., and Wang, J.: Effect of Low-Harmonic Magnetosonic Waves on the Radiation Belt Electrons Inside the Plasmasphere, *J. Geophys. Res. (Space Physics)*, 124, 3390–3401, <https://doi.org/10.1029/2018JA026328>, 2019.
- 380 Yuan, Z., Yu, X., Ouyang, Z., Yao, F., Huang, S., and Funsten, H. O.: Simultaneous trapping of EMIC and MS waves by background plasmas, *J. Geophys. Res. (Space Physics)*, 0, <https://doi.org/10.1029/2018JA026149>, 2019.
- Zhelavskaya, I. S., Spasojevic, M., Shprits, Y. Y., and Kurth, W. S.: Automated determination of electron density from electric field measurements on the Van Allen Probes spacecraft, *J. Geophys. Res. (Space Physics)*, 121, 4611–4625, <https://doi.org/10.1002/2015JA022132>, 2016.
- 385 Zhelavskaya, I. S., Shprits, Y. Y., and Spasojević, M.: Empirical Modeling of the Plasmasphere Dynamics Using Neural Networks, *J. Geophys. Res. (Space Physics)*, 122, 11,227–11,244, <https://doi.org/10.1002/2017JA024406>, 2017.

Zou, Z., Zuo, P., Ni, B., Wei, F., Zhao, Z., Cao, X., Fu, S., and Gu, X.: Wave Normal Angle Distribution of Fast Magnetosonic Waves: A Survey of Van Allen Probes EMFISIS Observations, *J. Geophys. Res. (Space Physics)*, 124, 5663–5674, <https://doi.org/10.1029/2019JA026556>, 2019.