

Influence of different types of ionospheric disturbances on GPS signals at polar latitudes

Vladimir B. Belakhovsky¹, Yaqi Jin², Wojciech J. Miloch²

5

¹ Polar Geophysical Institute, Apatity, Russia

² Department of Physics, University of Oslo, Oslo, Norway

Correspondence to: Vladimir B. Belakhovsky (belakhov@mail.ru)

10 **Abstract.** The comparative research of the influence of different types of auroral particle precipitations and polar cap patches (PCPs) on the GPS signals disturbances in the polar ionosphere was done. For this purpose, we use the GPS scintillation receivers at Ny-Ålesund and Skibotn, operated by the University of Oslo. The presence of the auroral particle precipitation and polar cap patches was determined by using data from the EISCAT 42m radar on Svalbard. The optical
15 aurora observations in 557.7 nm, 630.0 nm spectrum lines on Svalbard were used as well for the detection of ionospheric disturbances. The cusp identification was done with using SuperDARN (Hankasalmi) data.

We consider events when the simultaneous EISCAT 42m and GPS data were available for the 2010-2017 years, in paper we present in detail typical examples describing the overall picture and we present the statistics for 120 events. It was considered the dayside/cusp precipitation, substorm precipitations, daytime and nighttime PCPs, precipitation associated with the interplanetary shock wave arrival. We demonstrate that substorm-associated precipitations (even without PCPs) can
20 lead to a strong GPS phase (σ_{ϕ}) scintillations up to $\sim 1.5-3$ radians which is much stronger than those usually produced by other types of the considered ionosphere disturbances. The value of the substorm phase scintillations in general correlate with the value of the geomagnetic field disturbance. But sometimes even small geomagnetic substorm when it combined with the PCPs produces quite strong phase scintillations. Cusp phase scintillations are lower than dayside PCPs scintillations. PCPs can lead to stronger ROT (rate of total electron content) variations than other types of the ionosphere disturbances. So
25 our observations suggest that the substorms and PCPs, being different types of the high-latitude disturbances, lead to the development of different types and scales of ionospheric irregularities.

1. Introduction

30 The Global Navigation Satellite Systems (GNSS) have a great influence on human society today. The ionosphere as a medium for the radio waves propagation can produce a negative impact on the quality of the received signal. Global

Positioning System (GPS) uses two frequencies: $f_1 = 1575.42$ MHz and $f_2 = 1227.60$ MHz. There are a lot of dual frequency GPS receivers all over the world which are used for the ionosphere studies. Irregularities in the plasma density can lead to rapid fluctuations of amplitude and phase of the signal which are known to as ionosphere scintillations [Basu et al., 2002].
35 Strong scintillations reduce the quality of the signal and even lead to the signal loss. Thus, the investigation of GPS scintillations is an important aspect of space weather. The level of scintillations is characterized by the phase ($\sigma\Phi$) and amplitude (S4) scintillation indices. Amplitude scintillations are caused by the plasma irregularities with scale sizes ranging from tens to hundreds of meters, while the phase scintillations are caused by the irregularities with the sizes from hundreds of meters to several kilometers. Ionospheric scintillations are most severe in the equatorial region and at high latitudes [Basu
40 et al., 2002; Kintner et al., 2007].

The phase scintillations index is determined mainly by the diffractive (stochastic) GPS signal variations. In order to calculate scintillation indices a long-term trend caused by the satellite motion in relation to the receiver and ionosphere changes needs to be removed. A standard cutoff frequency (0.1 Hz) is commonly used for signal detrending since (Fremouw et al., 1978). This cutoff frequency is adequate for the equatorial and midlatitude ionosphere. But the high-latitude ionosphere is
45 characterized by the high and variable ionospheric drift velocity (~ 100 m/s– $1\ 500$ m/s) which add refractive variations to the phase scintillation index. The value of the cutoff frequency affects on the phase scintillation index. So it often leads to the strong phase scintillations without amplitude scintillation. Some researchers to solve this problem introduce new scintillations indexes: Mushini et al. (2012) introduced improved phase-scintillation index (σ_{chain}), Forte (2005) introduced $S\phi$ index. The fast iterative filtering signal decomposition technique was used to find optimal cutoff frequency (Ghobadi et
50 al., 2020; Spogli et al., 2021). De Franceschi et al. (2009) have demonstrated the difficulty in finding the optimum cutoff frequency for statistical studies and they proposed to look for actual scintillations investigating the simultaneous occurrence of S4 and σ_ϕ increase.

The high-latitude ionosphere is very dynamic and unpredictable structure forming plasma irregularities on a wide variety of scale sizes (from 1000 km to decameter scale). Case studies have indicated a relationship between auroral appearance and
55 GPS scintillations (Smith, 2008; Prikryl et al., 2010, Kinrade et al., 2013). Mostly discrete aurora cause strong scintillations and cycle slips (i.e. jump in differential phase TEC). Phase scintillations are more prominent than amplitude scintillation in the polar ionosphere (Prikryl et al., 2010). Ionospheric phase disturbances over auroral region are frequent phenomena which often occur during night time (Prikryl et al., 2011).

One of the most dynamic ionospheric disturbances at high latitudes is the substorm. Magnetosphere substorm is a transient
60 process originated on the nightside of the Earth, when a significant amount of energy derived from the solar wind-magnetosphere interaction is stored in the magnetosphere tail and then released into the auroral ionosphere (Rostoker et al., 1980). The substorms are characterized by the sporadic precipitations of energetic electrons from the magnetotail that lead to the appearance of the bright aurora. GPS signal phase scintillations correlate well with substorm-associated auroral disturbances.

65 It was found that polar moving auroral forms (PMAF) which are discrete auroral forms produced by the transient magnetopause reconnection have big impact on GNSS phase scintillations (Oksavik et al., 2015). Authors found that the scintillation impact is strongest when appearance of the PMAFs coincide with the appearance of the PCPs. Studies of (Van der Meeren et al., 2016) showed the sun-aligned arc in the polar cap does not cause significant phase scintillations.

70 At polar latitudes polar cap patches can produce severe ionosphere disturbances. Polar cap patches are 100–1000 km islands of enhanced F-region plasma density. The patches are appeared near the cusp and then propagate along the ionospheric convection streams into the nightside auroral oval modulated by the nightside tail reconnection, after that patches returned to the dayside (Lockwood and Carlson, 1992; Zhang et al., 2013). During strong and stable polar cap convection, segmentation may not happen and a continuous tongue of ionization (TOI) may be formed across the polar cap [Foster et al., 2005]. Phase scintillations in TOI were studied in the paper (Van der Meeren, 2014), it was observed bursts of phase scintillations and no amplitude scintillations in relation to the leading gradient of the TOI. Patches may develop smaller-scale irregularities down to decameter scale through the Kelvin-Helmholtz (KH) and gradient drift instabilities (Oksavik et al., 2012; Clausen et al., 2016). In the auroral oval, polar cap patches are termed auroral blobs (Lorentzen et al., 2010). Several types of auroral blobs are selected in previous investigations: boundary blobs, subauroral blobs, and auroral blobs (Crowley et al., 2000). These airglow emissions are detectable from ground optical instruments as structures propagating from high to low latitudes.

80 Statistical studies found one peak in the occurrence rate of GPS phase scintillation around magnetic noon and another peak around magnetic midnight (Jin et al., 2015). It is also found that the phase scintillation occurrence rate is higher in the dayside, while the strong phase scintillation occurs more frequently during night. Nonetheless, strong phase scintillation events can also be triggered at daytime in association with the PMAF.

Jin et al. (2014) found that polar cap patches have their biggest impact on GPS signals once they reach the nightside auroral oval, in particular when combined with upward field-aligned currents (Clausen et al. 2016). Jin et al. [2014] focused on phase scintillation measurements inside polar cap patches identified in airglow imager data and found that patches have a moderate scintillation impact ($\sigma\phi\sim 0.2$). They also found, however, that the strongest impact on scintillations occurred when these patches cross from the polar cap into the auroral oval to become auroral blobs (Jin et al., 2016). It was shown in the papers (Jin et al., 2014; Jin et al., 2016) that PCPs can produce GPS scintillations quite comparable with scintillations during the particle precipitations with appearance of strong green aurora. But it was a case study therefore this question needs further studies.

95 The high-latitude disturbances have a great negative influence of radio waves propagation. So it is important to know what type of the high-latitude ionosphere disturbances has strongest influence on GPS navigation systems. In the present work we address the following question: what disturbances in the polar ionosphere (particle precipitations or polar cap patches) have stronger impact on the scintillations of GPS signals?

2. Instruments

100

The Ny-Ålesund (NYA) GPS scintillation receiver of the University of Oslo (UiO) was the main instrument used in our study. Upon availability of data, the Skibotn (Norway, mainland) GPS receiver was also used. The UiO GNSS scintillation receiver is the standard GNSS Ionospheric Scintillation/total electron content (TEC) Monitor (GISTM), model GSV4004B (Van Dierendonck et al., 1993). The carrier phase and power at the L1 frequency (1.57542 GHz) are tracked and recorded at 105 50 Hz rate. The phase ($\sigma\phi$) and amplitude scintillation indices (S4) are also calculated and recorded automatically. The phase scintillation index is defined as the standard deviation of the carrier phase that has been detrended by the high-pass sixth-order Butterworth filter with a cutoff frequency of 0.1 Hz. The amplitude scintillation index (S4) is defined as the standard deviation of the received signal power, based on the 50-Hz sampling rate, normalized to the average signal power over one minute periods.

110 In our paper we use the standard detrending (0.1 Hz) in order to be able to compare our results with previous results obtained with using this GPS receiver on Svalbard (Clausen et al., 2016; Jin et al., 2015, 2016, 2017, 2018). The choice of the fixed cutoff frequency can add refractive variations to the phase scintillation index. So term “phase scintillation index” used in our study means the phase fluctuations due to the presence of large-scale irregularities (above the Fresnel radius).

The GPS TEC data have been postprocessed by using WinTEC-P [Carrano et al., 2009]. The ROT (Rate of TEC) data over 1 115 min are also used to depict the TEC variations [see, e.g., Alfonsi et al., 2011], where $ROT = \Delta TEC / \Delta t$.

For the describing the ionospheric plasma parameters (density, ion and electron temperature, line of sight ion velocity as a function of range) we used the Svalbard EISCAT 42m radar and UHF radar in Tromsø. The beam of the EISCAT 42m radar is directed along the geomagnetic field (azimuth = 184°, elevation = 82°). The UHF radar beam was fixed at an azimuthal angle of 185° and elevation angle of 77° (i.e., in the field-aligned direction in the F region).

120 For some convenient cases the optical aurora observations performed by all-sky imager of University of Oslo, Polar Geophysical Institute on Svalbard was used. The ASI in Longyearbyen (named LYR5) is located at Kjell Henriksen Observatory (KHO; 78.2°N, 16.0°E; 75.4° MLAT). The LYR5 ASI uses an ICCD (intensified charge-coupled device). Imager record emission intensity across the sky with a 180° field of view fish eye lens at 630.0 nm every 30 s and 557.7 nm every 15 s, respectively. The intensity of ASI is calibrated into the standard kilo Rayleigh (kR) intensity scale.

125 The stations mentioned in this study have the following geographic and geomagnetic (CGM) coordinates:

Ny Ålesund (NYA) – [78.92°N, 11.95°E], [75.25°N, 112.08°E];

Longyearbyen (LYR) – [78.20°N, 15.82°E], [75.12°N, 113.00°E];

Hornsund (HOR) – [77.00°N, 15.60°E], [74.13°N, 109.59°E];

Tromsø (TRO) – [69.66°N, 18.94°E], [66.64°N, 102.90°E];

130 Skibotn (SKN) – [69.43°N, 20.38°E], [66.28°N, 103.41°E].

IMAGE magnetometers data were used for the geomagnetic field observations. OMNI database was used for the evaluating the solar wind and interplanetary magnetic field parameters. We use the 1 min resolution Sym-H index and AE indices to

show the geomagnetic storm and substorm activity. The Sym-H and AE indices were obtained from the World Data Center for Geomagnetism at Kyoto University (<http://wdc.kugi.kyoto-u.ac.jp/>).

135

3. Analysis of ionosphere disturbances

In the present study we consider the influence of different geophysical phenomena on the GPS scintillations: dayside/cusp precipitations, nighttime substorm precipitation, daytime and nighttime polar cap patches, precipitations associated with the interplanetary shock arrival. We focused mainly on the phase scintillation index because amplitude scintillation index (S4) practically has no significant variations at high latitudes. The presence of the particle precipitation into the ionosphere associated with the appearance of the “green line” aurora was determined as the density increase between 100-200 km altitudes according to the EISCAT radar data. The presence of the polar cap patches was determined as a strong density increase above 200 km altitude. We consider mainly the winter time because the EISCAT radar works most often in winter season. We present 120 different cases for 2010-2017 years when the data from the EISCAT 42m radar was available and in this paper we analyze in detail typical examples. The presented conclusions are valid for the common picture. The preliminary analyze was done in the proceeding paper [Belakhovsky et al., 2020].

140

145

3.1. Dayside/cusp precipitations

Example of the dayside precipitations on 9 January 2016 is shown on Figure 1. It was geomagnetically quite period (SYM-H = -10 nT), solar wind speed had moderate values ($V = 460$ km/s). At time intervals 04-08 UT and 12-14 UT it is seen the ionosphere density increase at altitudes 100-200 km associated with the charge particle precipitation according to the EISCAT 42m data (MLT = UT + 3). The increase of the aurora intensity in 557.7 nm emission line measured by the NYA all-sky imager testifies about presence of the particle precipitation as well (Fig. 2.).

150

During this geomagnetic conditions NYA station often was located near the cusp region. Cusp is a small area near noon, it reaches about 3 MLT in longitude and some degrees in latitudes. The cusp can be identified by the spectral width of reflected ionosphere signal. In the region of the cusp, an increase in the spectral width of the reflected signal is observed due to an increase of the turbulence. Cusp is observed with an increase in the spectral width of the reflected signal up to 200 m/s at near noon hours. The methodic of the cusp identification with using SuperDARN data was done for example in (André et al., 2000; Pilipenko et al., 2017). According to the SuperDARN radar (beam 9) observations in Hankasalmi (Figure 2) the cusp near the Svalbard was registered approximately from 08 to 12 UT. The equatorial boundary of the cusp was located at 78 degrees of geographic latitudes and higher. The growth of the aurora intensity in 630.0 nm emission lines at 07-09 UT during low intensity in 557.7 nm may also testifies about the optical identification of the cusp.

155

160

The different colors on panels 2-5 (Figure 1) are data from the different GPS satellites. The GPS phase scintillation index reaches the value about 0.4-0.5 radian. Possibly the jumps in phase index variations in time interval 08-11 UT may testify about the passing of the station near the cusp. There is no strong Ne increase below 200 km, testifying about the particle

165

precipitations, according to the EISCAT 42m data at 08-11.30 UT. At the moment of the passing under the cusp region the VTEC (up to 12 TECU), ROT (up to 5 TECU/min) increase was also observed (Figure 1).

The growth of the phase index was seen not during all period of Ne enhancement (100-200 km) measured by the EISCAT radar. Possibly this is due to the field of view of EISCAT radar not coincides with the field of view of GPS receivers. So for
170 small-scale and medium-scale Ne increase is not always correlate with phase index growth.

The ROT variations have small disturbances (2-4 TECU/min) during the presence of the particle precipitation. Amplitude scintillation index have no distinct response to the morning and daytime precipitations.

It was not observed substorm disturbances during this day. It is seen small amplitude Pc5 pulsations (10-20 nT) in X-component of the geomagnetic field at NYA station during morning precipitations. These Pc5 pulsations can have
175 contribution to the charge particle precipitation into the ionosphere (Belakhovsky et al., 2016).

3.2. Substorm precipitations

The example of the substorm precipitations and the GPS scintillations response to it is shown in Figure 3 (11 December
180 2015). It was observed two substorms during this day. The first one was at 15.30-17.00 UT, the second was at 20.00-22.00 UT. It was polar substorms because it mainly observed at latitude higher than 70°. It can be noticed that the amplitude of the first substorm reaches the value about 1400 nT at Hornsund (HOR) station, at NYA station the amplitude of the substorm was 600 nT. The second substorm has lower amplitude than first substorm (600 nT at HOR station). These substorms was observed without geomagnetic storm (SYM-H \approx - 10 nT), however the solar wind speed was quite high ($V = 640-680$ km/s)
185 according to the OMNI database (data not shown).

The ionosphere plasma density ΔN_e increases during substorm on two orders from $1 \cdot 10^4$ to $1 \cdot 10^6$ cm^{-3} at altitude about 104 km, at altitude 125 km ΔN_e increases from $1 \cdot 10^4$ to $5 \cdot 10^5$ cm^{-3} . The substorms were accompanied by the strong increase of aurora intensity in different spectrum lines. The growth of the phase scintillation index was accompanied by the appearance of the bright aurora arc according to LYR all-sky camera observations (Figure 4) oriented approximately in east-west
190 direction. We have plotted ionosphere pierce points (IPP) to show how it overlaps with the EISCAT 42m and all-sky camera field of view (Figure 4). For large-scale disturbances (hundreds of km) which were considered in this paper this overlap does not matter. Always some GPS satellites can be used to register the ionosphere disturbance.

The phase index reaches the value about 2 radians during the first substorm. The growth of the phase scintillation index was seen mainly during the substorm expansion phase (30-40 minutes). During the second substorm the phase scintillation index
195 has the lower value (0.5-1.5 radians). The growth of the phase scintillation index was seen as sharp increases during 5-10 minutes time intervals.

Substorms do not lead to significant TEC increase. It is seen the absence of the TEC data during the substorm. It testifies about the cycle slips of GPS signal at this moment.

The ULF waves in Pi3 frequency range embedded into the substorm structure have contribution into the particle acceleration into the ionosphere, growth of the field-aligned currents (FAC) which leads to such strong values of the phase scintillation index.

3.3. Precipitations associated with the interplanetary shock arrival

It is considered the example of the interplanetary shock influence on scintillations of GPS signals. Here the example for the event of 22 January 2012 is presented. It is well known that the interplanetary shock interaction with the Earth's magnetosphere leads to strong particle precipitation into the ionosphere and leads to the appearance of the so named shock-aurora (Zhou et al., 2003). The interplanetary shock interaction with the Earth magnetosphere which leads to the development of the geomagnetic storm is known as SSC (storm sudden commencement) otherwise when there is no geomagnetic storm it is named as SI (sudden impulse). In the paper (Belakhovsky et al., 2017) it is shown that shock wave arrival produces to the global TEC increase at high latitudes up to 40%.

The considered interplanetary shock is accompanied by an abrupt increase of the solar wind velocity (from 320 to 400 km/s), density (from 20 to 40 cm⁻³), temperature, magnitude of the interplanetary magnetic field (from 12 to 25 nT) according to the OMNI database, abrupt growth of the SYM-H index at 06.10 UT (Figure 5). The NYA station at the moment of interplanetary shock arrival was located on the morning side (09 MLT). For the SSC event the phase index reaches the value near about 0.3-0.4 radians (Figure 6). The ROT reaches the value about 4 TECU/min. So SSC event does not lead to the strong GPS scintillations.

For the considered interplanetary shock cases the phase index reaches similar values (less than 1 radian).

3.4. Polar cap patches

Nighttime polar cap patches. The example of the evening-nighttime polar cap patches (PCPs) is shown on Figure 7 (left panel) for the 10 February 2015. The PCPs were observed at 19.00-23.30 UT as a density increase above 200 km according to the EISCAT 42m radar data. The ionosphere plasma density ΔN_e increases during PCPs from $8 \cdot 10^4$ to $7 \cdot 10^5$ cm⁻³ at altitude about 321 km. At NYA GPS receiver the phase scintillation index reaches the medium value (0.4 radians). However the ROT variations for the PCPs reach the high values (10-15 TECU/min).

During the PCPs appearance the Bz-component of the IMF has negative values (-6 nT) during 3 hours (data not shown). It leads to the development of the small substorm. The amplitude of the substorm is 120-140 nT in X-component of the geomagnetic field at NYA station. The PCPs is also identified in the aurora intensity variations as forms propagating from the polar to low latitudes in 630.0 nm (red line) emission (Figure 8) at 19.00-23.00 UT according to LYR all-sky camera observations.

It was done the comparison of the PCPs development on EISCAT 42m radar (Svalbard) and EISCAT UHF radar located at lower latitudes, in Tromsø (Figure 7, right panel). The sharp increase of the plasma density (Figure 8) from 12 to 17 UT

above 200 km is caused by the sunlight. During appearance of PCPs near the Svalbard at latitudes of the SKN (TRO) stations a long lasting substorm (more than 4 hours duration) with the amplitude 200-250 nT was observed. This substorm produces strong ΔN_e increase below 200 km and at altitudes 200-550 km (Figure 7, right panel). At SKN station the phase scintillation index has approximately the same values (0.4-0.5 radians) as in polar latitudes (NYA station) but for one moment σ_ϕ reaches the value about 0.7 radians. ROT variations at SKN station have lower values (6 TECU/min) than on Svalbard.

240

Daytime polar cap patches. It was also analyzed the influence of polar cap patches which was observed on the dayside on GPS signals scintillations. It is considered the geomagnetic storm on 22 January 2012 (Figure 5, Figure 6). The SSC event for this storm was considered in section 3.3 of this paper. It was CME (coronal mass ejection) geomagnetic storm conditions, the SYM-H index reached the value about -80 nT, the solar wind speed has maximum about 480 km/s according to the OMNI database.

According to the ionosphere plasma density measurements on EISCAT 42m radar the PCPs were registered after the development of the geomagnetic storm, in time interval 08.00-12.00 UT (11-15 MLT) – Figure 6. The ionosphere plasma density ΔN_e increases during PCPs from $5 \cdot 10^4$ to $7 \cdot 10^5$ cm⁻³ at altitude about 321 km. The negative bay in geomagnetic field variations with amplitude about 300 nT is seen on NYA station.

During this event the strong GPS phase scintillations (0.5-0.8 radians) were registered in whole time interval of the PCPs appearance. Amplitude S4 index has no any clear response to the PCPs. It was observed VTEC increase (from 5 to 18 TECU) caused by the PCPs contribution. ROT variations have high values (7 TECU/min).

For the all of the considered PCPs cases phase index has the value less than 1.

255 **3.5. Statistical analysis**

To confirm statistically results of our case studies we present 4 tables which include values of phase scintillation index, ROT values for the considered types of the ionosphere disturbances. Table 2 and Table 3 also include magnitude of the geomagnetic field disturbance (X-component) for the substorms, SSC/SI events. Often during one day some types of the ionosphere disturbances was observed.

Table 1 presents 33 dayside/cusp precipitations events: phase scintillation index is less than 1 radian with the medium values about 0.5-0.6 radian. ROT values are no more than 6 TECU/min.

Table 2 presents 35 substorm events. For many substorm events phase scintillation index is more than 1, ROT values are no more than 6 TECU/min. The maximum value of the phase scintillations are 2.9 radian fixed for the 20 January 2010 event when the geomagnetic field disturbance ΔX at NYA stations was about 750 nT. We also select separately substorms which were observed during the PCPs appearance. It is seen from the substorm statistics that in general phase index increase correlate with the level of the geomagnetic disturbance. But sometimes even small amplitude substorms lead to the

265

significant values of the phase index when it combined with the PCPs. Possibly presence of the PCPs give growth to the level of scintillations (Jin et al., 2014; Clausen et al. 2016).

270 Table 3 presents 14 SSC/SI events. Shock induced precipitations lead to medium values of the phase scintillation index (0.4-0.5 radians), and medium values of the ROT (4-6 TECU/min). SSC events when it was observed on nighttime often trigger the development of the geomagnetic substorm. So high values of the phase scintillations (near 1 radian) can be caused by the triggering of the substorm immediately after SSC. Often there is no significant increase of the GPS phase scintillations was observed after the SSC.

275 Table 4 shows 38 daytime and nighttime PCPs events. It is seen from the Table 3 that PCPs are less than 1. Analysis of the tables 3 shows that PCPs produce more strong ROT variations (even >10 TECU/min) than other types of the polar latitude ionosphere disturbances.

Jin et al. (2017) investigated the GPS scintillations around cusp region and found that cusp precipitations have stronger influence on GPS phase scintillation when it combined with the PCPs. Our research shows that daytime PCPs can produce
280 stronger GPS phase scintillations than dayside/cusp precipitations. See Table 1 and Table 4.

It is also seen from the Tables that often one type of the ionosphere disturbances was registered during several consecutive days. For example for the PCPs it is 28-30 November 2011, 4-6 November 2013, 20-26 January 2014, for the substorms it is 10-13 December 2015, for the cusp/daytime precipitation it is 17-19 December 2014. Of course there are more events with significant increase of the phase scintillations during 2010-2017 years. But we pay attention mainly to the events when the
285 GPS and EISCAT data were available simultaneously to precisely define the physical nature of the ionosphere disturbance. Only for the SSC/SI events we not always used the EISCAT radar data. So analysis of the group of the events confirms in general the detail analysis of the individual events.

4. Discussion

290

The high-latitude ionosphere is a very dynamic structure due to the charge particles (mainly electrons and protons) penetrating from the outer space which can lead to the appearance of the different times-scale ionosphere irregularities. Variations of the ionospheric electron density cause variable group delay and phase advance of the radio wave, resulting in rapid phase fluctuations or phase scintillations. The scintillations of the GPS radio signal are caused by refraction and
295 diffraction of radio waves passing through ionospheric irregularities on scales from tens of meters to a few kilometers (Basu et al., 1998; Kintner et al., 2007). There is a problem of the finding of optimal cutoff frequency during phase detrending. The choice of the standard cutoff frequency (0.1 Hz) can lead to the presence of the refractive variations in phase scintillation index (Forte, 2005; Mushini et al., 2012; Ghobadi et al., 2020; Spogli et al., 2021).

There are a lot of disturbances at polar ionosphere. The main phenomena are substorm and polar cap patches. In this work it
300 is considered the influence of different types of the high latitude ionosphere disturbances (such as dayside/cusp precipitation, substorms, nighttime and daytime polar cap patches, interplanetary shock wave) on perturbations of GPS signals with using

GPS scintillation receiver on Svalbard. For some events also SKN GPS scintillation receiver on mainland (Norway) was used. In this paper we present case studies and statistical analysis.

Concerning amplitude GPS scintillations at high latitudes we confirm the previous findings and did not find any certain
305 reaction of the S4 index to the considered disturbances. However, Jin et al. (2018) have found S4 scintillations for the very strong geomagnetic storm on 17 March 2017. But it was extreme event. For the ordinary events S4 index at high latitudes does not experience great increases. Possibly low values of amplitude scintillations at high latitudes are caused by the low elevation angles of GPS satellites at these regions. Since irregularities producing amplitude scintillations can be formed in the field-aligned direction. But this hypothesis needs to be tested.

310 The analysis shows that the polar substorms even if it observed without PCPs lead to the maximum values of the phase scintillation index (1.5-3 radians). From one side it is obvious because the substorm is a most powerful disturbance in the magnetosphere-ionosphere system, it leads to the growth of the ionosphere plasma density on two orders. The ULF waves (Pi3 pulsations) embedded into substorm can accelerate electron along the geomagnetic field lines and produce auroral arcs. The duration of the substorm is about 1.5-3 hours while the growth of the phase scintillation index was observed during 30-
315 40 minute (expansion phase). So the substorm leads to the high but short-time growth of the phase index. In paper (Kim et al., 2014) it is shown that ULF waves in Pi2 frequency range have a dominant role in producing accelerated auroral electrons. During the substorms bright and discrete auroral forms are appeared on the sky. Such inhomogeneous ionization structures produce significant changes in the refractive index and enhance the phase scintillation index (Hosokawa, 2014). In addition, field-aligned currents, produced field-aligned irregularities, can be the major driver of high-latitude ionospheric
320 irregularities (Prikryl et al., 2011).

The phase scintillations are typically produced by variations in the refractive index due to ionospheric irregularities of the scale from a few kilometers to a few tens of kilometers (Kintner et al. 2007). The phase scintillations during the substorm interval were produced through the refractive process caused by large-scale density irregularities associated with rapidly moving auroral arc. Hosokawa et al. (2014) found that phase scintillation was enhanced in relation to substorm onset and
325 decreased as the aurora became more diffuse. They suggested that discrete aurora in the GPS signal path is necessary for the occurrence of phase scintillations during substorm intervals. In addition to scintillation, other effects such as loss of lock (Smith et al., 2008) and cycle slips (Prikryl et al., 2010) have been directly observed in relation to auroral emissions. The long-term statistical study (De Franceschi et al., 2019) over Svalbard for the 2013-2016 years shows that magnetic midnight region is the most exposed to scintillations.

330 Polar cap patches are the source of decameter to kilometer-scale irregularities causing scintillations. In some of the considered cases the polar cap patches were observed during 6 hours on EISCAT 42m radar. Analysis shows that PCPs are accompanied by the lower values of phase index than during a substorm but this growth is registered during longer time intervals. At the same time the PCPs lead to the substantially higher values of the ROT variations. ROT is the time rate of change of the differential carrier phases, it providing information about scale size of the electron density irregularities scale
335 which produces GPS signal scintillations. We used in our study 1-minute ROT time resolution. The typical velocity of the

plasma convection at high latitudes is between 100 m/s and 1 km/s. So 1-minute ROT variations are caused by the irregularities with the scale about 6-60 km. Our observations suggest that the substorms and PCPs, being different types of the high-latitude disturbances, lead to the development of different types and scales of ionospheric irregularities.

340 Comparison of the EISCAT observations on Svalbard and in Tromso shows that during PCPs appearance on Svalbard a typical substorm at lower latitudes (Tromso) was observed. The level of the phase scintillations are quite comparable at high (Tromso) and polar (Svalbard) latitudes but the level of ROT is higher at polar latitudes.

345 There are two plasma instabilities which can explain the ionospheric irregularities at high latitudes: the gradient drift instability (GDI) and the Kelvin–Helmholtz instability (KHI). The GDI requires a density gradient and it can produce irregularities at the trailing edge of a plasma patch, while the KHI requires a velocity shear and the irregularities can be created around boundaries of velocity shears. The GDI can work on these sharp density gradients very efficiently (Moen et al., 2013) to produce small-scale irregularities which cause scintillations. The polar cap patches represent the largest scale structure in the high latitude ionosphere. During their convection in the polar cap, the Gradient Drift Instability (GDI) acts on them and develops small scale irregularities on the trailing edge.

350 The identifications of the cusp region with using the SuperDARN and all-sky cameras were done in our study. Cusp region is a source of the plasma turbulence of the different scales. It is found the medium growth of the TEC and ROT near the cusp region. Cusp phase scintillations are lower than dayside PCPs scintillations. On the dayside, the cusp is an active region of the GPS scintillation (Moen et al., 2013), where loss of signal locks occurs (Oksavik et al., 2015). By analyzing GPS phase scintillations around magnetic noon, it is suggested that GPS phase scintillations are sensitive to a combination of the cusp aurora and the intake of solar EUV-ionized plasma (Jin et al., 2015).

355 The common analysis shows that for all of the considered events the significant phase scintillations were observed. PCPs lead to the prolonged variations of phase index but with smaller values (less than 1). Shock induced precipitations, daytime and cusp precipitations lead to the medium values of phase index (0.4-0.5 radians) and medium values of the ROT. But among the all types of the disturbances the substorms leads to the greatest values of the phase scintillations index. Thus, the substorm precipitations have the strongest impact on the scintillations of GPS radio signals in the polar ionosphere even without PCPs. Substorm leads to short-time (10-20 minute) and strongest values of GPS phase scintillations while PCPs to long-time (some hours) medium values of GPS phase scintillations. So both types of these ionosphere disturbances are dangerous for the quality of communications, navigations, and locations at polar latitudes.

365 5. Conclusions

It is considered the influence of different types of the high latitude ionosphere disturbances (such as daytime/cusp precipitations, substorms, nighttime and daytime polar cap patches, interplanetary shock wave) on perturbations of GPS signals with using receivers on Svalbard and in Skibotn. All of the considering types of the ionospheric disturbances lead to the growth of phase scintillations index and ROT variations.

370 Substorms (even without PCPs) lead to the maximum values of the phase scintillation index (1.5-3 radians). The growth of the phase index observed mainly during the substorm expansion phase. ULF waves in Pi3 frequency range during a substorm producing auroral arcs can lead to such high values of the phase scintillation index.

The value of the substorm phase scintillations in general correlate with the value of the geomagnetic field disturbance. But sometimes even small geomagnetic substorms when it combined with the PCPs produce quite strong phase scintillations.

375 Polar cap patches lead to the prolonged variations of phase index with smaller values (less than 1). At the same time polar cap patches can lead to strong ROT variations (10-15 TECU/min) in comparison with the substorms disturbances. So our observations suggest that the substorms and PCPs, being different types of the high-latitude disturbances, lead to the development of different types and scales of ionospheric irregularities.

Cusp region, identified with using SuperDARN radar, leads to the moderate growth of phase scintillation index and ROT
380 variations. Shock induced precipitations lead to medium values of the phase scintillation index (0.4-0.5 radians) and medium values of the ROT (4-6 TECU/min). Our analyses shows that there is no clear response of the amplitude scintillation index to the different types of the ionosphere disturbances.

Code and data availability. The authors thank the Norwegian Polar Research Institute at Ny-Ålesund for assisting us with
385 the GPS receiver in Ny-Ålesund, Bjørn Lybekk and Espen Trondsen for the instrument operations. The IMF data are provided by the NASA OMNI Web service (<http://omniweb.gsfc.nasa.gov>).

The authors wish to thank IMAGE (<http://www.ava.fmi.fi/image/>), EISCAT groups for the available data. EISCAT is an international association supported by research organizations in China (CRIRP), Finland (SA), Japan (NIPR and STEL),
390 Norway (NFR), Sweden (VR), and the United Kingdom (NERC). Data from EISCAT can be obtained from the Madrigal database <http://www.eiscat.se/madrigal>. The University of Oslo ASI data are available at <http://tid.uio.no/plasma/aurora>.

The authors acknowledge the use of SuperDARN data. SuperDARN is a collection of radars funded by national scientific funding agencies of Australia, Canada, China, France, Italy, Japan, Norway, South Africa, United Kingdom and the United States of America.

395 **Author contributions.** VB take a part in formulation of the problem, analyze events, do conclusions, and write text with contributions from all the co-authors. YJ take a part in formulation of the problem, process GPS, optical data, correct text. WM take a part in formulation of the problem, organize this research team.

Competing interests. The authors declare that they have no conflict of interest.

400

Acknowledgements. This work is supported by the Russian Science Foundation (grant # 18-77-10018).

References

- Alfonsi L., Spogli L., De Franceschi G., Romano V., Aquino M., Dodson A. and Mitchell C. N.: Bipolar climatology of GPS ionospheric scintillation at solar minimum, *Radio Science*, 46, RS0D05, <https://doi.org/10.1029/2010RS004571>, 2011.
- 405 André R., Pinnock M., Rodger A. S.: Identification of the low-altitude cusp by Super Dual Auroral Radar Network radars: A physical explanation for the empirically derived signature, *J. Geophys. Res.*, Vol. 105, № 12, P. 27081-27094, <https://doi.org/10.1029/2000JA900071>, 2000.
- Basu S., Groves K. M., Basu S. and Sultan P.J.: Specification and forecasting of scintillations in communication/navigation links: Current status and future plans, *Journal of Atmospheric and Solar-Terrestrial Physics*, 64 (16), 1745–1754, 410 [https://doi.org/10.1016/S1364-6826\(02\)00124-4](https://doi.org/10.1016/S1364-6826(02)00124-4), 2002.
- Belakhovsky V., Pilipenko V., Murr D., Fedorov E., Kozlovsky A.: Modulation of the ionosphere by Pc5 waves observed simultaneously by GPS/TEC and EISCAT, *Earth, Planets and Space*, Vol. 68., article id.102, <https://doi.org/10.1186/s40623-016-0480-7>, 2016.
- Belakhovsky V.B., Pilipenko V.A., Sakharov Ya.A., Lorentzen D.L., Samsonov S.N.: Geomagnetic and ionospheric 415 response to the interplanetary shock on January 24, 2012, *Earth, Planets and Space*, Vol. 69, Issue 1, article id. #105., <https://doi.org/10.1186/s40623-017-0696-1>, 2017.
- Belakhovsky V. B., Jin Y., Miloch W. J.: Influence of Different Ionospheric Disturbances on the GPS Scintillations at High Latitudes, *Springer Proceedings in Earth and Environmental Sciences, Problems of Geocosmos–2018*, P. 281-287. https://doi.org/10.1007/978-3-030-21788-4_24, 2020.
- 420 Carrano C. S., Anghel A., Quinn R.A., and Groves K.M.: Kalman filter estimation of plasmaspheric total electron content using GPS, *Radio Science*, 44, RS0A10, <https://doi.org/10.1029/2008RS004070>, 2009.
- Clausen L. B. N., Moen J. I., Hosokawa K., Holmes J. M.: GPS scintillations in the high latitudes during periods of dayside and nightside reconnection, *J. Geophys. Res.*, 121, 3293–3309, <https://doi.org/10.1002/2015JA022199>, 2016.
- Crowley G., Ridley A. J., Deist D., Wing S., Knipp D. J., Emery B. A., Foster J., Heelis R., Hairston M., and Reinisch B. 425 W.: Transformation of high-latitude ionospheric F region patches into blobs during the March 21, 1990, storm, *J. Geophys. Res.*, 105, A3, 5215–5230, <https://doi.org/10.1029/1999JA900357>, 2000.
- De Franceschi G., Spogli L., Alfonsi L., Romano V., Cesaroni C., Hunstad I. The ionospheric irregularities climatology over Svalbard from solar cycle 23, *Scientific reports*, 9, 1, 1-14, <https://doi.org/10.1038/s41598-019-44829-5>, 2019.
- Forte B. Optimum detrending of raw GPS data for scintillation measurements at auroral latitudes, *Journal of Atmospheric and Solar-Terrestrial Physics*, 67, 1100–1109, <https://doi.org/10.1016/j.jastp.2005.01.011>, 2005. 430
- Foster J.C., Coster A.J., Erickson P.J., Holt J.M., Lind F.D., Rideout W., McCready M., A. van Eyken, Barnes R.J., Greenwald R.A., Rich F.J.: Multiradar observations of the polar tongue of ionization, *J. Geophys. Res.*, 110, A09S31, <https://doi.org/10.1029/2004JA010928>, 2005.

- Fremouw E.J., Leadabrand R.L., Livingston R.C., Cousins M.D., Rino C.L., Fair B.C., Long R.A. Early results from the
435 DNA wideband satellite experiment — complex-signal scintillation, *Radio Science*, 13(1), 167–187,
<https://doi.org/10.1029/RS013i001p0016>, 1978.
- Ghobadi H., Spogli L., Alfonsi L., Cesaroni C., Cicone A., Linty N., Romano V., Cafaro M. Disentangling ionospheric
refraction and diffraction effects in GNSS raw phase through fast iterative filtering technique, *GPS Solutions*, 24, 1-13,
<https://doi.org/10.1007/s10291-020-01001-1>, 2020.
- 440 Hosokawa K., Shiokawa K., Otsuka Y., Nakajima A., Ogawa T., and Kelly J. D.: Estimating drift velocity of polar cap
patches with all-sky airglow imager at Resolute Bay, Canada, *Geophysical Research Letters*, 33, L15111,
<https://doi.org/10.1029/2006GL026916>, 2006.
- Hosokawa K., Otsuka Yu., Ogawa Y. and Tsugawa T.: Observations of GPS scintillation during an isolated auroral
substorm, *Progress in Earth and Planetary Science*, 1:16, <https://doi.org/10.1186/2197-4284-1-16>, 2014.
- 445 Jin Y., Moen J., Miloch W.: GPS scintillation effects associated with polar cap patches and substorm auroral activity: direct
comparison, *Journal of Space Weather and Space Climate*, 4, A23, <https://doi.org/10.1051/swsc/2014019>, 2014.
- Jin Y., Moen J. I., and Miloch W. J.: On the collocation of the cusp aurora and the GPS phase scintillation: A statistical
study, *J. Geophys. Res.*, 120, 9176–9191, <https://doi.org/10.1002/2015JA021449>, 2015.
- Jin Y., Moen J. I., Miloch W. J., Clausen L. B. N., and Oksavik K.: Statistical study of the GNSS phase scintillation
450 associated with two types of auroral blobs, *J. Geophys. Res.*, 121, 4679–4697, <https://doi.org/10.1002/2016JA022613>, 2016.
- Jin Y., Moen J. I., Oksavik K., Spicher A., Clausen L. B.N., Miloch W. J. GPS scintillations associated with cusp dynamics
and polar cap patches: *J. Space Weather Space Clim.*, 7, A23. <https://doi.org/10.1051/swsc/2017022>, 2017.
- Jin Y., Oksavik K. GPS scintillations and losses of signal lock at high latitudes during the 2015 St. Patrick’s Day storm. *J.*
Geophys. Res., 123, 7943–7957, <https://doi.org/10.1029/2018JA025933>, 2018.
- 455 Kim H., Clauer C.R., Deshpande K., Lessard M.R., Weatherwax A.T., Bust G.S., Crowley G., Humphreys T.E.: Ionospheric
irregularities during a substorm event: Observations of ULF pulsations and GPS scintillations, *Journal of Atmospheric and*
Solar-Terrestrial Physics, 114, 1–8, <http://dx.doi.org/10.1016/j.jastp.2014.03.006>, 2014.
- Kinrade J., Mitchell C.N., Smith N.D., Ebihara Y., Weatherwax A.T., and Bust G.S.: GPS phase scintillation associated with
optical auroral emissions: First statistical results from the geographic South Pole, *J. Geophys. Res.*, 118, 2490–2502,
460 <https://doi.org/10.1002/jgra.50214>, 2013.
- Kintner P. M., Ledvina B. M., and De Paula E. R.: GPS and ionospheric scintillations, *Space Weather*, 5, S09003,
<https://doi.org/10.1029/2006SW000260>, 2007.
- Lockwood M., and Carlson Jr. H. C.: Production of polar cap electron density patches by transient magnetopause
reconnection, *Geophys. Res. Lett.*, 19, 1731–1734, <https://doi.org/10.1029/92GL01993>, 1992.
- 465 Lorentzen D. A., Moen J., Oksavik K., Sigernes F., Saito Y., and Johnsen M. G.: In situ measurement of a newly created
polar cap patch, *J. Geophys. Res.*, 115, A12323, <https://doi.org/10.1029/2010JA015710>, 2010.

- Moen J., Oksavik K., Alfonsi L., Daabakk Y., Romano V., and Spogli L.: Space weather challenges of the polar cap ionosphere, *J. Space Weather and Space Clim.*, 3, A02, <https://doi.org/10.1051/swsc/2013025>, 2013.
- 470 Mushini S.C., Jayachandran P.T., Langley R.B., MacDougall J.W., Pokhotelov D. Improved amplitude and phase-scintillation indices derived from wavelet detrended high-latitude GPS data, *GPS Solutions*, 16, 3, 363-373, <https://doi.org/10.1007/s10291-011-0238-4>, 2012.
- Oksavik K., Moen J., Lester M., Bekkeng T.A., and Bekkeng J. K.: In situ measurements of plasma irregularity growth in the cusp ionosphere, *J. Geophys. Res.*, 117, A11301, <https://doi.org/10.1029/2012JA017835>, 2012.
- 475 Oksavik K., Van der Meeren C., Lorentzen D.A., Baddeley L.J., and Moen J.: Scintillation and loss of signal lock from poleward moving auroral forms in the cusp ionosphere, *J. Geophys. Res.*, 120, 9161-9175, <https://doi.org/10.1002/2015JA021528>, 2015.
- Pilipenko V., Belakhovsky V., Engebretson M. J., Kozlovsky A., Yeoman T.: Are dayside long-period pulsations related to the cusp?, *Ann. Geophys.*, 33, P. 395-404, <https://doi.org/10.5194/angeo-33-395-2015>, 2015.
- 480 Prikryl P., Jayachandran P. T., Mushini S. C., Pokhotelov D., MacDougall J.W., Donovan E., Spanswick E., St.-Maurice J.-P.: GPS TEC, scintillation and cycle slips observed at high latitudes during solar minimum, *Ann. Geophys.*, 28, 1307-1316, <https://doi.org/10.5194/angeo-28-1307-2010>, 2010.
- Prikryl P., Jayachandran P.T., Mushini S.C., Chadwick R.: Climatology of GPS phase scintillation and HF radar backscatter for the high-latitude ionosphere under solar minimum conditions, *Ann. Geophys.*, 29, 377-392, <https://doi.org/10.5194/angeo-29-377-2011>, 2011.
- 485 Rostoker G., Akasofu S.-I., Foster J., Greenwald R., Kamide Y., Kawasaki K., Lui A., McPherron R., and Russel C.: Magnetospheric substorms-definition and signatures, *J. Geophys. Res.*, 85(A4), 1663-1668, <https://doi.org/10.1029/JA085iA04p01663>, 1980.
- Smith A.M., Mitchell C.N., Watson R.J., Meggs R.W., Kintner P. M., Kauristie K., Honary F.: GPS scintillation in the high arctic associated with an auroral arc, *Space weather*, vol. 6, s03d01, <https://doi.org/10.1029/2007SW000349>, 2008.
- 490 Spogli L., Ghobadi H., Cicone A., Alfonsi L., Cesaroni C., Linty N., Romano V., and Cafaro M. Adaptive Phase Detrending for GNSS Scintillation Detection: A Case Study Over Antarctica, *IEEE Geoscience and Remote Sensing Letters*, <https://doi.org/10.1109/LGRS.2021.3067727>, 2021.
- Van Dierendonck A.J., Klobuchar J., Hua Q.: Ionospheric Scintillation Monitoring Using Commercial Single Frequency C/A Code Receivers. Paper presented at Proceedings of the 6th International Technical Meeting of the Satellite Division of The Institute of Navigation (ION GPS 1993), Salt Lake City, UT, September 22-24, 1993.
- 495 Van der Meeren C., Oksavik K., Lorentzen D., Moen J. I., Romano V.: GPS scintillation and irregularities at the front of an ionization tongue in the nightside polar ionosphere, *J. Geophys. Res.*, 119, 8624-8636, <https://doi.org/10.1002/2014JA020114>, 2014.

500 Van der Meeren C., Oksavik K., Lorentzen D.A., Rietveld M.T., and Clausen L.B.N.: Severe and localized GNSS
scintillation at the poleward edge of the nightside auroral oval during intense substorm aurora // *J. Geophys. Res.*, 120,
10,607–10,621, <https://doi.org/10.1002/2015JA021819>, 2015.

Van der Meeren C., Oksavik K., Lorentzen D. A., Paxton L.J., Clausen L.B. N. Scintillation and irregularities from the
nightside part of a Sun-aligned polar cap arc, *J. Geophys. Res.*, 121, 5723–5736, <https://doi.org/10.1002/2016JA022708>,
2016.

505 Zhang Q.-H., Zhang B.-C., Moen J., Lockwood M., McCrea I.W., Yang H.-G., Hu H.-Q., Liu R.-Y., Zhang S.-R., Lester M.
Polar cap patch segmentation of the tongue of ionization in the morning convection cell, *Geophys. Res. Lett.*, 40, 2918–
2922, <https://doi.org/10.1002/grl.50616>, 2013.

Zhou X.-Y., Strangeway R.J., Anderson P.C., Sibeck D.G., Tsurutani B.T., Haerendel G., Frey H.U., Arballo J.K.: Shock
aurora: FAST and DMSP observation, *J. Geophys. Res.*, 108:8019, <https://doi.org/10.1029/2002JA009701>, 2003.

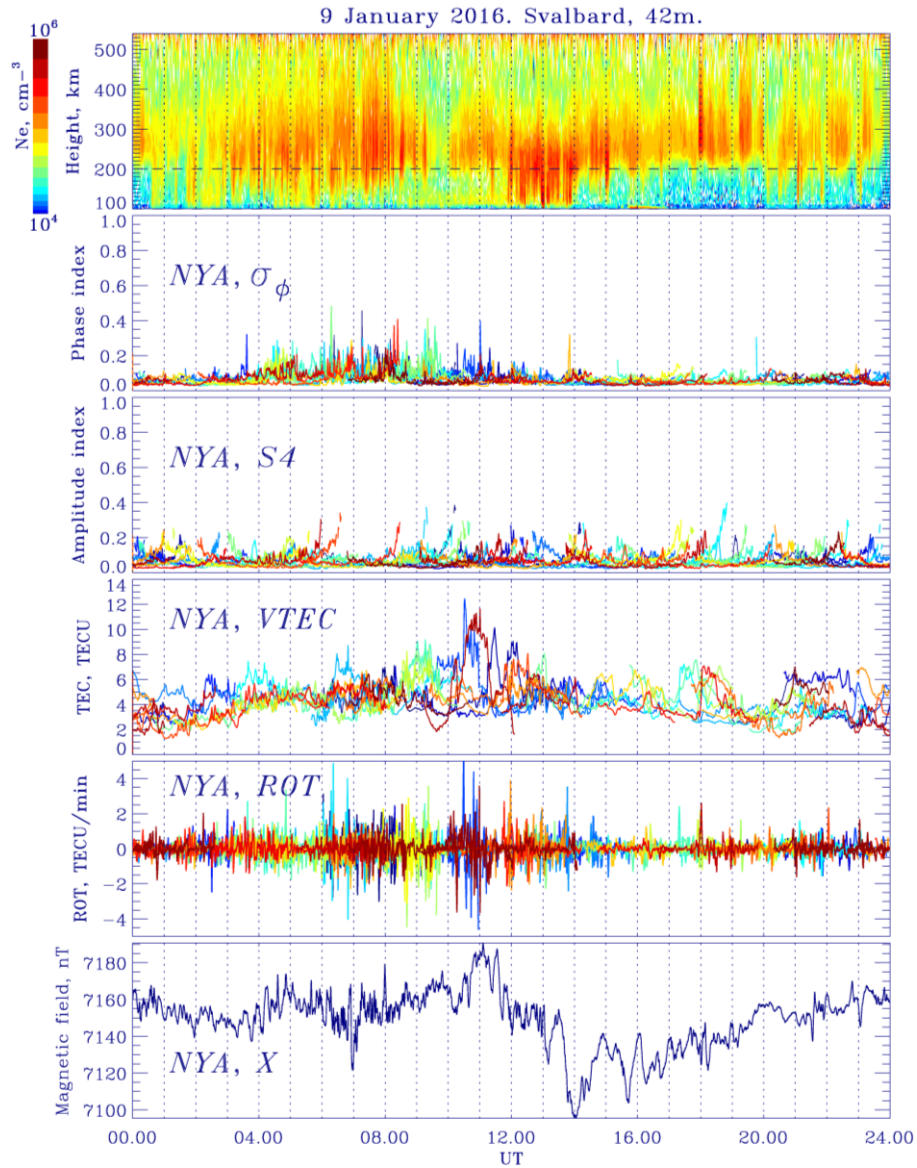
510

515

520

525

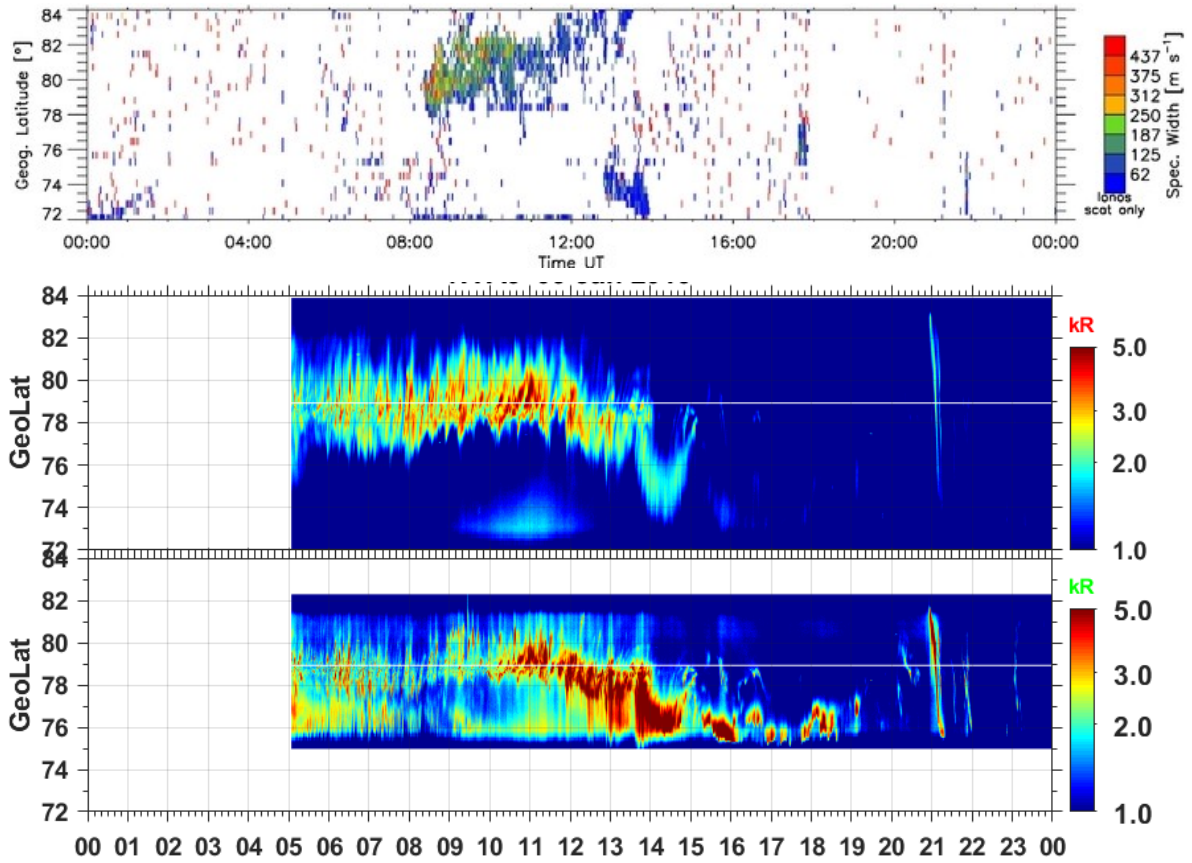
530



540 **Figure 1: Ionosphere plasma density according to the EISCAT 42m radar data; phase scintillation index and amplitude scintillation index according to the GPS receiver at NYA station; TEC and ROT variations according to the GPS receiver at NYA station; geomagnetic field variations (X-component) at NYA station for the 9 January 2016.**

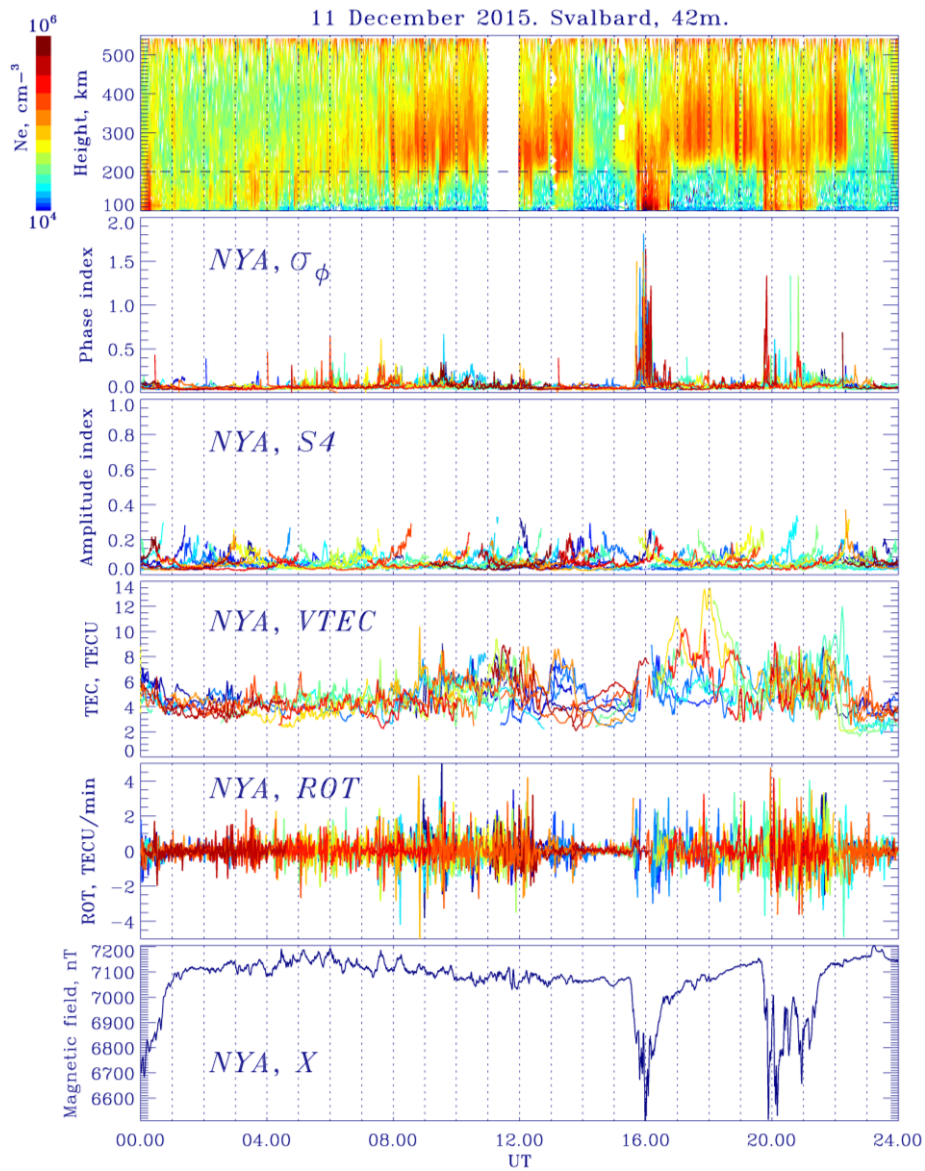
545

550



555

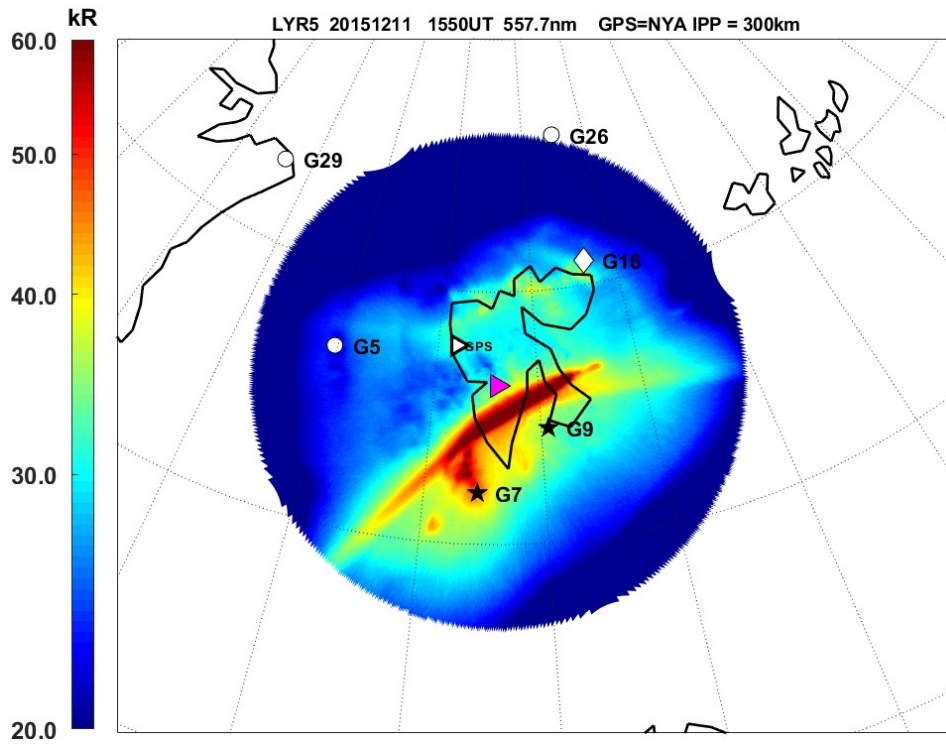
Figure 2: Latitude-time plot of the spectral width according SuperDARN Hankasalmi radar, keograms (557.7 nm and 630.0 nm emission line) from the all-sky imager at NYA station for the 9 January 2016.



565 **Figure 3: Ionosphere plasma density according to the EISCAT 42m radar data; phase scintillation index and amplitude scintillation index according to the GPS receiver at NYA station; TEC and ROT variations according to the GPS receiver at NYA station; geomagnetic field variations (X-component) at NYA station for the 11 December 2015.**

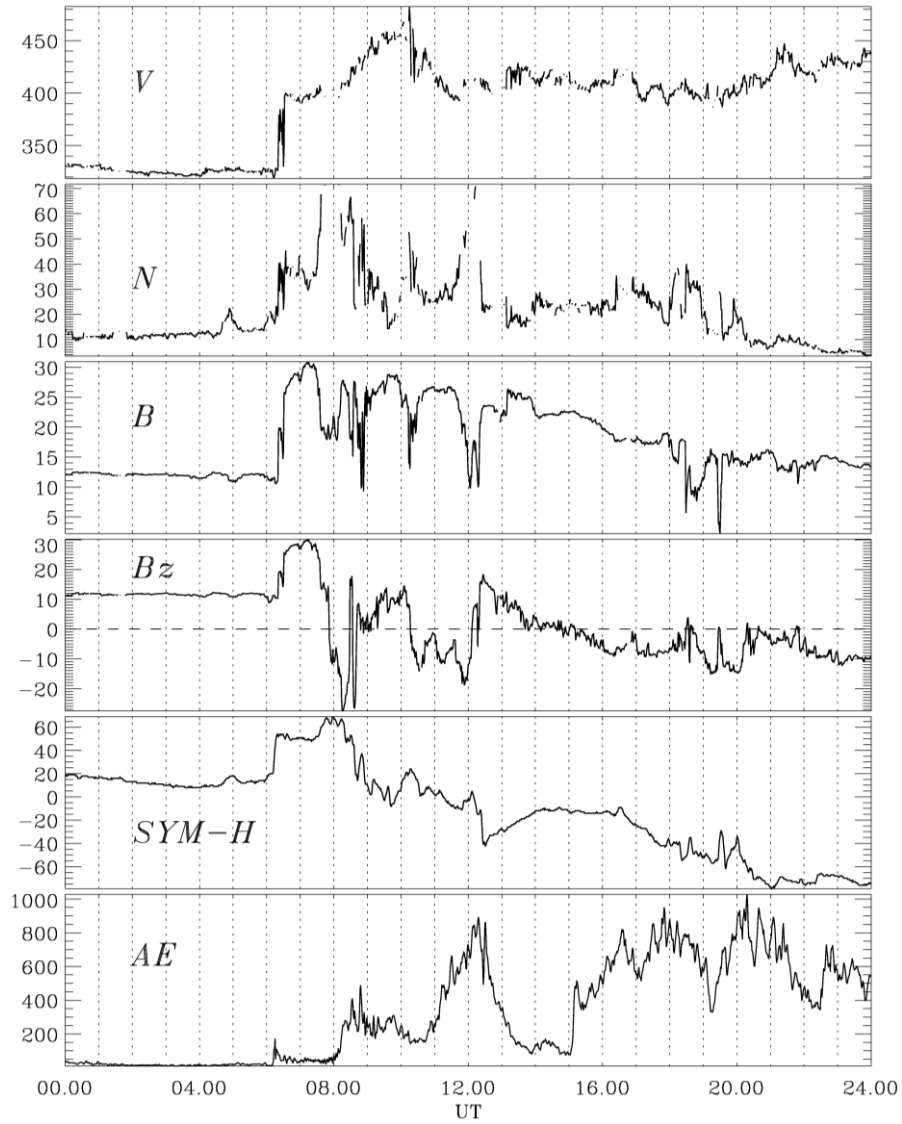
570

575



580 **Figure 4: The all-sky camera image (557.7 nm emission) at LYR station projected into the map for the 15.50 UT 11 December 2015. The rose triangle is a EISCAT 42m radar, the white triangle is a GPS receiver on NYA station, the G7, G9, G5, G16, G29, G26 is a ionosphere pierce points of the corresponding GPS satellites.**

585



590

Figure 5: Solar wind speed V [km/s], solar wind density N [cm⁻³], magnitude of the IMF B [nT], B_z -component [nT] of IMF according to the OMNI database, SYM-H index [nT], AE index [nT] for the 22 January 2012.

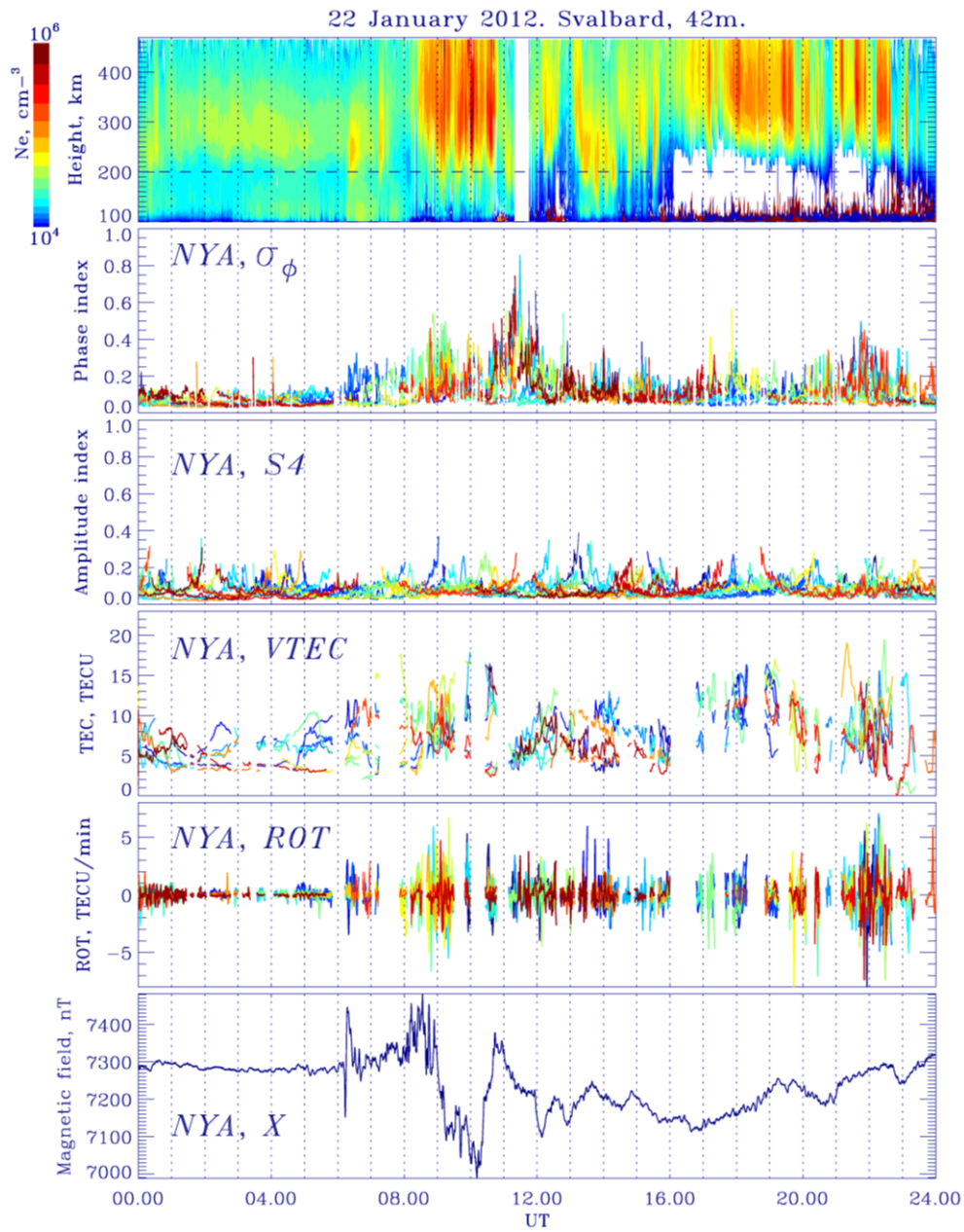
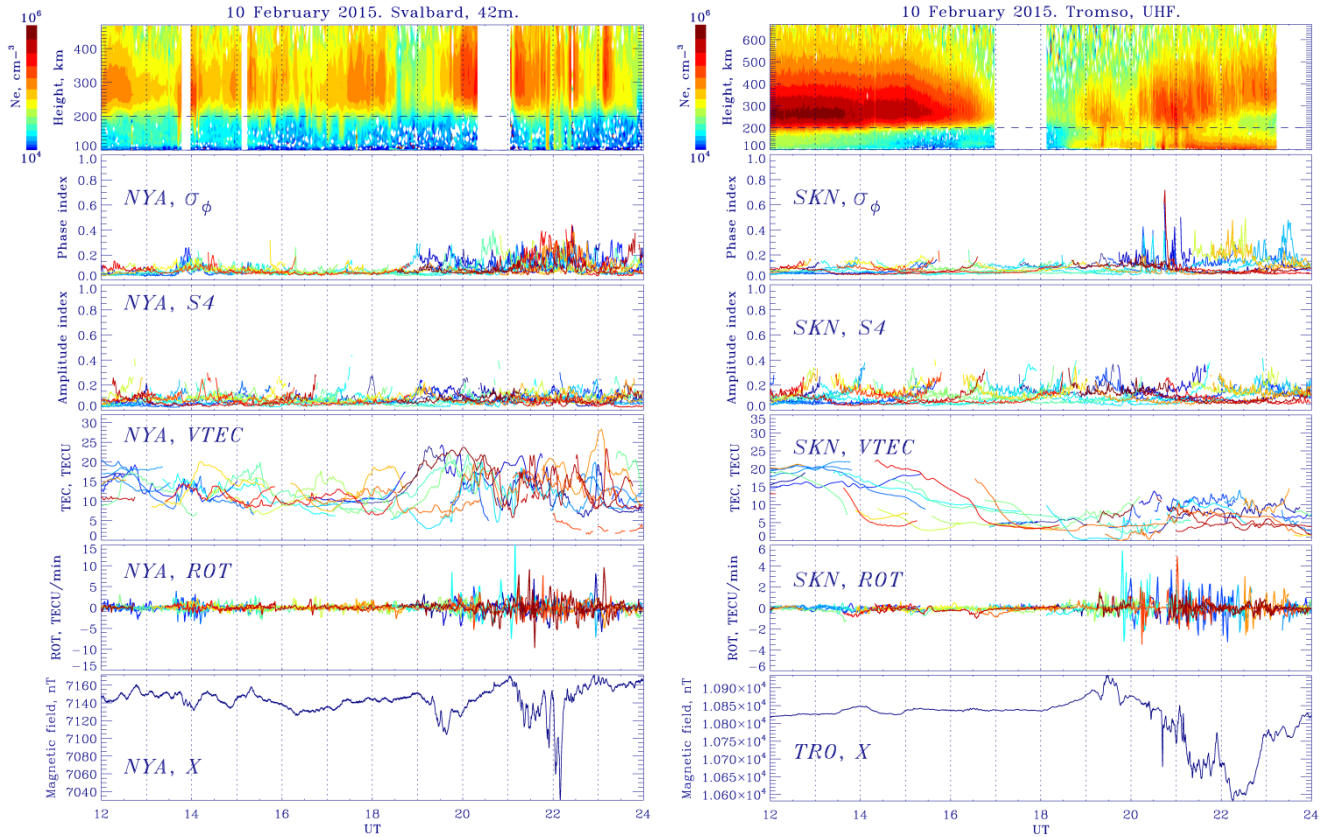
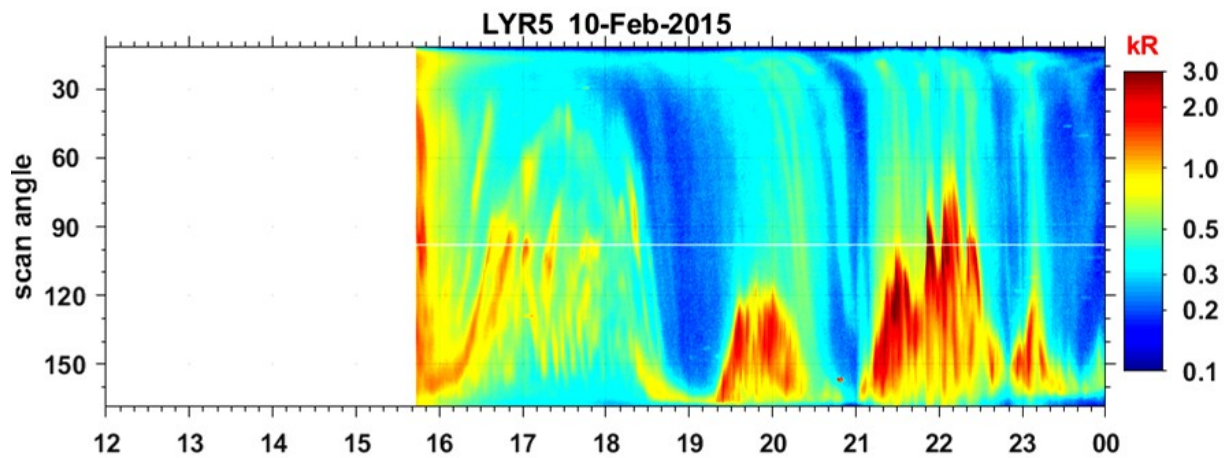


Figure 6: Ionosphere plasma density according to the EISCAT 42m radar data; phase scintillation index and amplitude scintillation index according to the GPS receiver at NYA station; TEC and ROT variations according to the GPS receiver at NYA station; geomagnetic field variations (X-component) at NYA station for the 22 January 2012.



610 **Figure 7: Left panel: ionosphere plasma density according to the EISCAT 42m data; phase, amplitude scintillation indexes, TEC and ROT variations according to the GPS receiver at NYA station; X-component of the geomagnetic field at NYA station. Right panel: ionosphere plasma density according to the UHF EISCAT data; phase and amplitude scintillation indexes, TEC and ROT variations according to the GPS receiver at SKN station; X-component of the geomagnetic field at TRO station for the 10 February 2015.**

620



625

Figure 8: Keogram (630.0 nm emission line) from the all-sky imager at LYR station for the 10 February 2015.

630

635

640

Table 1. The values of the phase scintillation index, ROT, determined form GPS receiver at NYA station during dayside/cusp precipitation events.

645

Date (day/month/ year)	Time, UT	Phase index, deg	ROT, TECU/ min
Dayside/cusp precipitation			
16.01.2012	09.00-14.00	0.7	4
09.01.2014	05.30-11.00	0.5	6
20.01.2014	08.00-10.00	0.9	4
21.01.2014	05.00-09.00	0.6	4
23.01.2014	04.00-07.00	0.85	4
25.01.2014	04.00-08.00	0.35	4
26.01.2014	06.00-09.00	0.35	3
17.12.2014	06.00-12.00	0.5	4
18.12.2014	05.00-10.00	0.55	3
19.12.2014	06.00-11.00	0.55	5
10.12.2015	05.00-11.30	0.6	5
11.12.2015	05.00-12.00	0.7	4
13.12.2015	05.00-12.00	0.55	5
06.01.2016	05.00-12.00	0.55	3.5
07.01.2016	05.00-12.00	0.6	4
09.01.2016	04.00-12.00	0.5	6
10.01.2016	05.00-12.00	0.7	4
12.01.2016	06.00-12.00	0.8	5
12.01.2016	14.00-16.00	0.5	6
06.02.2016	08.00-13.00	0.3	6
07.02.2016	09.00-14.00	0.4	6
08.02.2016	07.00-15.00	0.4	4
10.02.2016	06.00-12.00	0.35	3
05.10.2016	04.00-08.00	0.8	4
27.10.2016	07.00-11.30	0.65	4
01.12.2016	04.00-10.00	0.35	4
20.01.2017	12.00-14.00	0.5	4
25.01.2017	06.00-12.00	0.8	5
01.02.2017	08.00-12.00	0.6	4
02.02.2017	08.00-12.00	0.6	4
04.02.2017	11.00-14.00	0.75	6
17.12.2017	07.00-13.00	0.9	4
18.12.2017	05.00-12.00	0.7	4

650

655

660

665

Table 2. The values of the phase scintillation index, ROT, determined form GPS receiver at NYA station, and corresponding levels of the geomagnetic field disturbance (ΔX) during different substorm and substorm during PCPs events.

670

Date (day/month/year)	Time, UT	Phase index, deg	ROT, TECU/ min	ΔX , nT
Substorms				
20.01.2010	17.00	2.9	4	750
01.12.2011	02.30	1	3	300
01.12.2011	20.00	0.55	4	200
16.01.2012	21.00	1.15	4	300
09.01.2014	20.30	0.7	6	450
10.12.2015	17.00	1.8	6	550
10.12.2015	20.30	1	4	600
11.12.2015	16.00	1.8	–	600
11.12.2015	20.00	1.3	6	650
12.12.2015	21.30	1.1	2	180
12.12.2015	22.30	0.7	2	70
13.12.2015	21.00	1.3	2	120
06.01.2016	01.20	1.3	4	700
07.01.2016	20.00	0.75	4	250
10.01.2016	21.00	0.75	2	180
05.02.2016	19.30	1.2	6	300
08.02.2016	03.00	1.3	4	300
17.03.2016	17.30	1.6	4	650
17.03.2016	21.00	0.9	2	300
17.03.2016	22.00	0.9	4	170
03.10.2016	17.00	0.6	4	150
03.10.2016	19.00	1.6	4	600
27.10.2016	18.00	1.2	4	200
27.10.2016	21.00	1.35	5	500
20.01.2017	19.00	1.1	5	370
26.01.2017	19.30	1.1	4	400
27.01.2017	21.00	1.2	4.5	200
17.12.2017	20.30	1	4	400
18.12.2017	19.00	1.15	4	300
Substorms during PCPs				
28.11.2011	22.30	1.25	6	200
18.01.2012	23.00	1.15	4	75
04.12.2013	19.00	0.9	4	150
15.12.2014	19.00	1.3	6	110
11.01.2016	19.30	1.5	2	400
11.01.2016	23.00	0.5	6	200

675

680

685

690

695

700

Table 3. The values of the phase scintillation index, ROT, determined form GPS receiver at NYA station, and corresponding levels of the geomagnetic field disturbance (ΔX) during SSC/SI events.

705

Date (day/month/year)	Time, UT	Phase index, deg	ROT, TECU/ min	ΔX , nT
SSC/SI events				
22.01.2012	06.20	0.4	4	300
24.01.2012	15.00	0.3	4	400
08.03.2012	11.00	0.35	3	200
14.07.2012	18.00	0.2	2.5	50
17.03.2013	06.00	0.8	3	550
02.10.2013	02.00	0.6	3	250
13.12.2013	13.30	0.3	2	50
12.09.2014	16.00	0.55	4	200
21.12.2014	19.30	0.7	7	80
07.01.2015	06.30	0.25	2	50
15.08.2015	08.30	0.3	2	400
14.12.2015	13.30	0.35	3	100
04.04.2017	04.40	0.5	3	70
07.09.2017	23.00	0.9	7	300

710

715

720

725

Table 4. The values of the phase scintillation index, ROT, determined form GPS receiver at NYA station during PCPs events.

730

Date (day/month/ year)	Time, UT	Phase index, deg	ROT, TECU/ min
Polar cap patches			
28.11.2011	17.00-22.00	0.4	8
29.11.2011	00.00-08.00	0.8	11
29.11.2011	14.00-22.00	0.4	6
30.11.2011	16.00-22.00	0.7	9
30.11.2011	10.00-14.00	0.5	7
18.01.2012	16.00-22.00	0.6	8
22.01.2012	08.00-12.00	0.9	6
22.01.2012	17.00-23.00	0.5	9
13.01.2013	17.00-22.00	0.6	10
04.11.2013	16.00-23.00	0.85	9
05.11.2013	20.00-24.00	0.35	6
06.11.2013	15.00-24.00	0.75	8
07.11.2013	06.00-12.00	0.8	10
04.12.2013	18.00-22.00	0.8	9
20.01.2014	08.00-10.00	0.9	3
21.01.2014	12.00-21.00	0.3	7
22.01.2014	06.30-15.00	0.8	7
22.01.2014	19.30-22.00	0.2	4
23.01.2014	19.00-22.00	0.4	7
24.01.2014	17.00-21.00	0.3	4
26.01.2014	18.00-24.00	0.3	2
28.01.2014	16.30-24.00	0.5	10
30.01.2014	19.00-22.00	0.3	5
18.12.2014	21.00-24.00	0.7	6
15.12.2014	09.00-24.00	0.4	7
16.12.2014	18.00-24.00	0.2	7
10.02.2015	20.00-24.00	0.4	15
11.02.2015	12.00-22.00	0.4	6
12.02.2015	15.00-23.00	0.3	7
13.02.2015	19.00-24.00	0.3	9.5
28.02.2015	17.00-23.00	0.35	11
20.03.2015	07.00-13.00	0.7	11
05.01.2016	12.00-18.00	0.4	5
07.02.2016	16.00-22.00	0.2	4
09.02.2016	19.00-23.00	0.2	4
09.02.2016	09.00-12.00	0.6	4
10.02.2016	18.00-23.00	0.2	4
12.02.2016	08.00-13.00	0.65	7

Influence of different types of ionospheric disturbances on GPS signals at polar latitudes

Vladimir B. Belakhovsky¹, Yaqi Jin², Wojciech J. Miloch²

¹ Polar Geophysical Institute, Apatity, Russia

² Department of Physics, University of Oslo, Oslo, Norway

Correspondence to: Vladimir B. Belakhovsky (belakhov@mail.ru)

5
10 **Abstract.** The comparative research of the influence of different types of auroral particle precipitations and polar cap patches (PCPs) on the GPS signals disturbances in the polar ionosphere was done. For this purpose, we use the GPS scintillation receivers at Ny-Ålesund and Skibotn, operated by the University of Oslo. The presence of the auroral particle precipitation and polar cap patches was determined by using data from the EISCAT 42m radar on Svalbard. The optical
15 aurora observations in 557.7 nm, 630.0 nm spectrum lines on Svalbard were used as well for the detection of ionospheric disturbances. The cusp identification was done with using SuperDARN (Hankasalmi) data.

20 We consider events when the simultaneous EISCAT 42m and GPS data were available for the 2010-2017 years, in paper we present in detail typical examples describing the overall picture and we present the statistics for 120 events. It was considered the dayside/cusp precipitation, substorm precipitations, daytime and nighttime PCPs, precipitation associated with the interplanetary shock wave arrival. We demonstrate that substorm-associated precipitations (even without PCPs) can lead to a strong GPS phase (σ_ϕ) scintillations up to $\sim 1.5-3$ radians which is much stronger than those usually produced by other types of the considered ionosphere disturbances. The value of the substorm phase scintillations in general correlate with the value of the geomagnetic field disturbance. But sometimes even small geomagnetic substorm when it combined with the PCPs produces quite strong phase scintillations. Cusp phase scintillations are lower than dayside PCPs scintillations. PCPs can lead to stronger ROT (rate of total electron content) variations than other types of the ionosphere disturbances. So
25 our observations suggest that the substorms and PCPs, being different types of the high-latitude disturbances, lead to the development of different types and scales of ionospheric irregularities.

1. Introduction

30 The Global Navigation Satellite Systems (GNSS) have a great influence on human society today. The ionosphere as a medium for the radio waves propagation can produce a negative impact on the quality of the received signal. Global

Удалено: We consider ab when the simultaneous EISC GPS data were available for years, in paper we present in typical examples describing picture.

Удалено: Cusp phase scin lower than dayside PCP scin

Удалено: 2

Удалено: At the same

Positioning System (GPS) uses two frequencies: $f_1 = 1575.42$ MHz and $f_2 = 1227.60$ MHz. There are a lot of dual frequency GPS receivers all over the world which are used for the ionosphere studies. Irregularities in the plasma density can lead to rapid fluctuations of amplitude and phase of the signal which are known to as ionosphere scintillations [Basu et al., 2002].

Удалено: is referred

45 Strong scintillations reduce the quality of the signal and even lead to the signal loss. Thus, the investigation of GPS scintillations is an important aspect of space weather. The level of scintillations is characterized by the phase ($\sigma\Phi$) and amplitude (S4) scintillation indices. Amplitude scintillations are caused by the plasma irregularities with scale sizes ranging from tens to hundreds of meters, while the phase scintillations are caused by the irregularities with the sizes from hundreds of meters to several kilometers. Ionospheric scintillations are most severe in the equatorial region and at high latitudes [Basu et al., 2002; Kintner et al., 2007].

50 The phase scintillations index is determined mainly by the diffractive (stochastic) GPS signal variations. In order to calculate scintillation indices a long-term trend caused by the satellite motion in relation to the receiver and ionosphere changes needs to be removed. A standard cutoff frequency (0.1 Hz) is commonly used for signal detrending since (Fremouw et al., 1978). This cutoff frequency is adequate for the equatorial and midlatitude ionosphere. But the high-latitude ionosphere is
55 characterized by the high and variable ionospheric drift velocity (~100 m/s–1 500 m/s) which add refractive variations to the phase scintillation index. The value of the cutoff frequency affects on the phase scintillation index. So it often leads to the strong phase scintillations without amplitude scintillation. Some researchers to solve this problem introduce new scintillations indexes: Mushini et al. (2012) introduced improved phase-scintillation index (σ_{chain}), Forte (2005) introduced $S\phi$ index. The fast iterative filtering signal decomposition technique was used to find optimal cutoff frequency (Ghobadi et al., 2020; Spogli et al., 2021). De Franceschi et al. (2009) have demonstrated the difficulty in finding the optimum cutoff frequency for statistical studies and they proposed to look for actual scintillations investigating the simultaneous occurrence of S4 and σ_p increase.

The high-latitude ionosphere is very dynamic and unpredictable structure forming plasma irregularities on a wide variety of scale sizes (from 1000 km to decameter scale). Case studies have indicated a relationship between auroral appearance and
65 GPS scintillations (Smith, 2008; Prikryl et al., 2010, Kinrade et al., 2013). Mostly discrete aurora cause strong scintillations and cycle slips (i.e. jump in differential phase TEC). Phase scintillations are more prominent than amplitude scintillation in the polar ionosphere (Prikryl et al., 2010). Ionospheric phase disturbances over auroral region are frequent phenomena which often occur during night time (Prikryl et al., 2011).

Удалено: [

Удалено:]

Удалено: is

Удалено: [

Удалено:]

Удалено: [

Удалено:]

Удалено: in the

Удалено: realized

Удалено: [

Удалено:]

Удалено: s

70 One of the most dynamic ionospheric disturbances at high latitudes is the substorm. Magnetosphere substorm is a transient process originated on the nightside of the Earth, when a significant amount of energy derived from the solar wind-magnetosphere interaction is stored in the magnetosphere tail and then released into the auroral ionosphere (Rostoker et al., 1980). The substorms are characterized by the sporadic precipitations of energetic electrons from the magnetotail that lead to the appearance of the bright aurora. GPS signal phase scintillations correlate well with substorm-associated auroral disturbances.

It was found that polar moving auroral forms (PMAF) which are discrete auroral forms produced by the transient magnetopause reconnection have big impact on GNSS phase scintillations (Oksavik et al., 2015). Authors found that the scintillation impact is strongest when appearance of the PMAFs coincide with the appearance of the PCPs. Studies of (Van der Meeren et al., 2016), showed the sun-aligned arc in the polar cap does not cause significant phase scintillations. At polar latitudes polar cap patches can produce severe ionosphere disturbances. Polar cap patches are 100–1000 km islands of enhanced F-region plasma density. The patches are appeared near the cusp and then propagate along the ionospheric convection streams into the nightside auroral oval modulated by the nightside tail reconnection, after that patches returned to the dayside (Lockwood and Carlson, 1992; Zhang et al., 2013). During strong and stable polar cap convection, segmentation may not happen and a continuous tongue of ionization (TOI) may be formed across the polar cap [Foster et al., 2005]. Phase scintillations in TOI were studied in the paper (Van der Meeren, 2014), it was observed bursts of phase scintillations and no amplitude scintillations in relation to the leading gradient of the TOI. Patches may develop smaller-scale irregularities down to decameter scale through the Kelvin-Helmholtz (KH) and gradient drift instabilities (Oksavik et al., 2012; Clausen et al., 2016). In the auroral oval, polar cap patches are termed auroral blobs (Lorentzen et al., 2010). Several types of auroral blobs are selected in previous investigations: boundary blobs, subauroral blobs, and auroral blobs (Crowley et al., 2000). These airglow emissions are detectable from ground optical instruments as structures propagating from high to low latitudes. Statistical studies found one peak in the occurrence rate of GPS phase scintillation around magnetic noon and another peak around magnetic midnight (Jin et al., 2015). It is also found that the phase scintillation occurrence rate is higher in the dayside, while the strong phase scintillation occurs more frequently during night. Nonetheless, strong phase scintillation events can also be triggered at daytime in association with the PMAF. Jin et al. (2014) found that polar cap patches have their biggest impact on GPS signals once they reach the nightside auroral oval, in particular when combined with upward field-aligned currents (Clausen et al. 2016). Jin et al. [2014] focused on phase scintillation measurements inside polar cap patches identified in airglow imager data and found that patches have a moderate scintillation impact ($\sigma\phi\sim 0.2$). They also found, however, that the strongest impact on scintillations occurred when these patches cross from the polar cap into the auroral oval to become auroral blobs (Jin et al., 2016). It was shown in the papers (Jin et al., 2014; Jin et al., 2016) that PCPs can produce GPS scintillations quite comparable with scintillations during the particle precipitations with appearance of strong green aurora. But it was a case study therefore this question needs further studies. The high-latitude disturbances have a great negative influence of radio waves propagation. So it is important to know what type of the high-latitude ionosphere disturbances has strongest influence on GPS navigation systems. In the present work we address the following question: what disturbances in the polar ionosphere (particle precipitations or polar cap patches) have stronger impact on the scintillations of GPS signals?

Удалено: [

Удалено:]

Удалено: PMAFs are in with PCP

Удалено: [

Удалено:]

Удалено: have

Удалено: [

Удалено:]

Удалено: [

Удалено:]

Удалено: [

Удалено:]

Удалено: [

Удалено:]

Удалено: [

Удалено:]

Удалено: [

Удалено:]

Удалено: [

Удалено:]

Удалено: [

Удалено:]

Удалено: [

Удалено:]

Удалено: [

Удалено:]

Удалено: [

Удалено:]

120

2. Instruments

150 The Ny-Ålesund (NYA) GPS scintillation receiver of the University of Oslo (UiO) was the main instrument used in our study. Upon availability of data, the Skibotn (Norway, mainland) GPS receiver was also used. The UiO GNSS scintillation receiver is the standard GNSS Ionospheric Scintillation/total electron content (TEC) Monitor (GISTM), model GSV4004B (Van Dierendonck et al., 1993). The carrier phase and power at the L1 frequency (1.57542 GHz) are tracked and recorded at 50 Hz rate. The phase ($\sigma\phi$) and amplitude scintillation indices (S4) are also calculated and recorded automatically. The phase scintillation index is defined as the standard deviation of the carrier phase that has been detrended by the high-pass sixth-order Butterworth filter with a cutoff frequency of 0.1 Hz. The amplitude scintillation index (S4) is defined as the standard deviation of the received signal power, based on the 50-Hz sampling rate, normalized to the average signal power over one minute periods.

155 In our paper we use the standard detrending (0.1 Hz) in order to be able to compare our results with previous results obtained with using this GPS receiver on Svalbard (Clausen et al., 2016; Jin et al., 2015, 2016, 2017, 2018). The choice of the fixed cutoff frequency can add refractive variations to the phase scintillation index. So term “phase scintillation index” used in our study means the phase fluctuations due to the presence of large-scale irregularities (above the Fresnel radius).

The GPS TEC data have been postprocessed by using WinTEC-P [Carrano et al., 2009]. The ROT (Rate of TEC) data over 1 min are also used to depict the TEC variations [see, e.g., Alfonsi et al., 2011], where $ROT = \Delta TEC / \Delta t$.

165 For the describing the ionospheric plasma parameters (density, ion and electron temperature, line of sight ion velocity as a function of range) we used the Svalbard EISCAT 42m radar and UHF radar in Tromsø. The beam of the EISCAT 42m radar is directed along the geomagnetic field (azimuth = 184°, elevation = 82°). The UHF radar beam was fixed at an azimuthal angle of 185° and elevation angle of 77° (i.e., in the field-aligned direction in the F region).

For some convenient cases the optical aurora observations performed by all-sky imager of University of Oslo, Polar Geophysical Institute on Svalbard was used. The ASI in Longyearbyen (named LYR5) is located at Kjell Henriksen Observatory (KHO; 78.2°N, 16.0°E; 75.4° MLAT). The LYR5 ASI uses an ICCD (intensified charge-coupled device).

170 Imager record emission intensity across the sky with a 180° field of view fish eye lens at 630.0 nm every 30 s and 557.7 nm every 15 s, respectively. The intensity of ASI is calibrated into the standard kilo Rayleigh (kR) intensity scale.

The stations mentioned in this study have the following geographic and geomagnetic (CGM) coordinates:

175 Ny Ålesund (NYA) – [78.92°N, 11.95°E], [75.25°N, 112.08°E];
Longyearbyen (LYR) – [78.20°N, 15.82°E], [75.12°N, 113.00°E];
Hornsund (HOR) – [77.00°N, 15.60°E], [74.13°N, 109.59°E];
Tromsø (TRO) – [69.66°N, 18.94°E], [66.64°N, 102.90°E];
Skibotn (SKN) – [69.43°N, 20.38°E], [66.28°N, 103.41°E].

180 IMAGE magnetometers data were used for the geomagnetic field observations. OMNI database was used for the evaluating the solar wind and interplanetary magnetic field parameters. We use the 1 min resolution Sym-H index and AE indices to

Удалено: [

Удалено:]

Удалено: The phase scintillation index is defined as the standard deviation of the carrier phase that has been detrended by the high-pass sixth-order Butterworth filter. The phase scintillation index were computed over one minute periods. This term are used in this study.

Удалено: The ASI in Ny-Ålesund (named NYA4) was located at Research Station.

Удалено: The NYA4 ASI uses an EMCCD (electron multiplying charge-coupled device).

Удалено: as

show the geomagnetic storm and substorm activity. The Sym-H and AE indices were obtained from the World Data Center for Geomagnetism at Kyoto University (<http://wdc.kugi.kyoto-u.ac.jp/>).

200 3. Analysis of ionosphere disturbances

In the present study, we consider the influence of different geophysical phenomena on the GPS scintillations: dayside/cusp precipitations, nighttime substorm precipitation, daytime and nighttime polar cap patches, precipitations associated with the interplanetary shock arrival. We focused mainly on the phase scintillation index because amplitude scintillation index (S4) practically has no significant variations at high latitudes. The presence of the particle precipitation into the ionosphere associated with the appearance of the “green line” aurora was determined as the density increase between 100-200 km altitudes according to the EISCAT radar data. The presence of the polar cap patches was determined as a strong density increase above 200 km altitude. We consider mainly the winter time because the EISCAT radar works most often in winter season. We present 120 different cases for 2010-2017 years when the data from the EISCAT 42m radar was available and in this paper we analyze in detail typical examples. The presented conclusions are valid for the common picture. The preliminary analyze was done in the proceeding paper [Belakhovsky et al., 2020].

Удалено: ,
Удалено: ed

Удалено: large

Удалено: In general we i
150 different cases for 2010
when the data from the EISC
was available, however, in th
present only typical example

Удалено: 19

Отформатировано: An
(США)

Удалено: s

3.1. Dayside/cusp precipitations

Example of the dayside precipitations on 9 January 2016 is shown on Figure 1. It was geomagnetically quite period (SYM-H = -10 nT), solar wind speed had moderate values ($V = 460$ km/s). At time intervals 04-08 UT and 12-14 UT it is seen the ionosphere density increase at altitudes 100-200 km associated with the charge particle precipitation according to the EISCAT 42m data (MLT = UT + 3). The increase of the aurora intensity in 557.7 nm emission line measured by the NYA all-sky imager testifies about presence of the particle precipitation as well (Fig. 2).

During this geomagnetic conditions NYA station often was located near the cusp region. Cusp is a small area near noon, it reaches about 3 MLT in longitude and some degrees in latitudes. The cusp can be identified by the spectral width of reflected ionosphere signal. In the region of the cusp, an increase in the spectral width of the reflected signal is observed due to an increase of the turbulence. Cusp is observed with an increase in the spectral width of the reflected signal up to 200 m/s at near noon hours. The methodic of the cusp identification with using SuperDARN data was done for example in (André et al., 2000; Pilipenko et al., 2017). According to the SuperDARN radar (beam 9) observations in Hankasalmi (Figure 2) the cusp near the Svalbard was registered approximately from 08 to 12 UT. The equatorial boundary of the cusp was located at 78 degrees of geographic latitudes and higher. The growth of the aurora intensity in 630.0 nm emission lines at 07-09 UT during low intensity in 557.7 nm may also testify about the optical identification of the cusp.

Удалено: y

Отформатировано: An
(США)

Удалено: in

Удалено: [

Удалено:]

The different colors on panels 2-5 (Figure 1) are data from the different GPS satellites. The GPS phase scintillation index reaches the value about 0.4-0.5 radian. Possibly the jumps in phase index variations in time interval 08-11 UT may testify about the passing of the station near the cusp. There is no strong Ne increase below 200 km, testifying about the particle

Удалено: y

Удалено: is a projections
GPS satellites into the ionos

precipitations, according to the EISCAT 42m data at 08-11.30 UT. At the moment of the passing under the cusp region the VTEC (up to 12 TECU), ROT (up to 5 TECU/min) increase was also observed (Figure 1).

The growth of the phase index was seen not during all period of Ne enhancement (100-200 km) measured by the EISCAT radar. Possibly [this is](#) due to the field of view of EISCAT radar not coincides with the field of view of GPS receivers. So for small-scale and medium-scale Ne increase is not always correlate with phase index growth.

The ROT variations have small disturbances (2-4 TECU/min) during the presence of the particle precipitation. Amplitude, scintillation index have no distinct response to the morning and daytime precipitations.

It was not observed substorm disturbances during this day. It is seen small amplitude Pc5 pulsations (10-20 nT) in X-component of the geomagnetic field at NYA station, during morning precipitations. These Pc5 pulsations can have contribution to the charge particle precipitation into the ionosphere ([Belakhovsky et al., 2016](#)).

3.2. Substorm precipitations

The example of the substorm precipitations and the GPS scintillations response to it is shown in Figure 3 (11 December 2015). It was observed two substorms during this day. The first one was at 15.30-17.00 UT, the second was at 20.00-22.00 UT. It was polar substorms because it mainly observed at latitude higher than 70°. It can be noticed that the amplitude of the first substorm reaches the value about 1400 nT at Hornsund (HOR) station, at NYA station the amplitude of the substorm was 600 nT. The second substorm has lower amplitude than first substorm (600 nT at HOR station). These substorms was observed without geomagnetic storm (SYM-H \approx - 10 nT), however the solar wind speed was quite high ($V = 640-680$ km/s) according to the OMNI database (data not shown).

The ionosphere plasma density ΔN_e increases during substorm, [on two orders from \$1 \cdot 10^4\$ to \$1 \cdot 10^6\$ cm⁻³ at altitude about 104 km, at altitude 125 km \$\Delta N_e\$ increases from \$1 \cdot 10^4\$ to \$5 \cdot 10^5\$ cm⁻³](#). The substorms were accompanied by the strong increase of aurora intensity in different spectrum lines. The growth of the phase scintillation index was accompanied by the appearance of the bright aurora arc according to LYR all-sky camera observations (Figure 4) oriented approximately in east-west direction. [We have plotted ionosphere pierce points \(IPP\) to show how it overlaps with the EISCAT 42m and all-sky camera field of view \(Figure 4\). For large-scale disturbances \(hundreds of km\) which were considered in this paper this overlap does not matter. Always some GPS satellites can be used to register the ionosphere disturbance.](#)

The phase index reaches the value about 2 radians during the first substorm. The growth of the phase scintillation index was seen mainly during the substorm expansion phase (30-40 minutes). During the second substorm the phase scintillation index has the lower value (0.5-1.5 radians). The growth of the phase scintillation index was seen as sharp increases during 5-10 minutes time intervals.

Substorms do not lead to significant TEC increase. It is seen the absence of the TEC data during the substorm. It testifies about the cycle slips of GPS signal at this moment.

Удалено: it's

Удалено: s

Удалено: s

Удалено: [

Удалено:]

Удалено: was

Удалено: on more that or

Удалено: $9 \cdot 10^4$ to $1 \cdot 10^6$ 100-160 km

The ULF waves in Pi3 frequency range embedded into the substorm structure have contribution into the particle acceleration into the ionosphere, growth of the field-aligned currents (FAC) which leads to such strong values of the phase scintillation index.

Удалено: can

3.3. Precipitations associated with the interplanetary shock arrival

It is considered the example of the interplanetary shock influence on scintillations of GPS signals. Here the example for the event of 22 January 2012 is presented. It is well known that the interplanetary shock interaction with the Earth's magnetosphere leads to strong particle precipitation into the ionosphere and leads to the appearance of the so named shock-aurora (Zhou et al., 2003). The interplanetary shock interaction with the Earth magnetosphere which leads to the development of the geomagnetic storm is known as SSC (storm sudden commencement) otherwise when there is no geomagnetic storm it is named as SI (sudden impulse). In the paper (Belakhovsky et al., 2017) it is shown that shock wave arrival produces to the global TEC increase at high latitudes up to 40%.

The considered interplanetary shock is accompanied by an abrupt increase of the solar wind velocity (from 320 to 400 km/s), density (from 20 to 40 cm⁻³), temperature, magnitude of the interplanetary magnetic field (from 12 to 25 nT) according to the OMNI database, abrupt growth of the SYM-H index at 06.10 UT (Figure 5). The NYA station at the moment of interplanetary shock arrival was located on the morning side (09 MLT). For the SSC event the phase index reaches the value near about 0.3-0.4 radians (Figure 6). The ROT reaches the value about 4 TECU/min. So SSC event does not lead to the strong GPS scintillations.

For the considered interplanetary shock cases the phase index reaches similar values (less than 1 radian).

3.4. Polar cap patches

Nighttime polar cap patches. The example of the evening-nighttime polar cap patches (PCPs) is shown on Figure 7 (left panel) for the 10 February 2015. The PCPs were observed at 19.00-23.30 UT as a density increase above 200 km according to the EISCAT 42m radar data. The ionosphere plasma density ΔN_e increases during PCPs from $8 \cdot 10^4$ to $7 \cdot 10^5$ cm⁻³ at altitude about 321 km. At NYA GPS receiver the phase scintillation index reaches the medium value (0.4 radians). However the ROT variations for the PCPs reach the high values (10-15 TECU/min).

Удалено: 5

Удалено: as

During the PCPs appearance the Bz-component of the IMF has negative values (-6 nT) during 3 hours (data not shown). It leads to the development of the small substorm. The amplitude of the substorm is 120-140 nT in X-component of the geomagnetic field at NYA station. The PCPs is also identified in the aurora intensity variations as forms propagating from the polar to low latitudes in 630.0 nm (red line) emission (Figure 8) at 19.00-23.00 UT according to LYR all-sky camera observations.

Удалено: 7

It was done the comparison of the PCPs development on EISCAT 42m radar (Svalbard) and EISCAT UHF radar located at lower latitudes, in Tromsø (Figure 7, right panel). The sharp increase of the plasma density (Figure 8) from 12 to 17 UT

Удалено: 6

Удалено: 6

330 above 200 km is caused by the sunlight. During appearance of PCPs near the Svalbard at latitudes of the SKN (TRO)
stations a long lasting substorm (more than 4 hours duration) with the amplitude 200-250 nT was observed. This substorm
produces strong ΔN_e increase below 200 km and at altitudes 200-550 km (Figure 7, right panel). At SKN station the phase
scintillation index has approximately the same values (0.4-0.5 radians) as in polar latitudes (NYA station) but for one
moment σ_p reaches the value about 0.7 radians. ROT variations at SKN station have lower values (6 TECU/min) than on
335 Svalbard.

Daytime polar cap patches. It was also analyzed the influence of polar cap patches which was observed on the dayside on
GPS signals scintillations. It is considered the geomagnetic storm on 22 January 2012 (Figure 5, Figure 6). The SSC event
for this storm was considered in section 3.3 of this paper. It was CME (coronal mass ejection) geomagnetic storm conditions,
340 the SYM-H index reached the value about -80 nT, the solar wind speed has maximum about 480 km/s according to the
OMNI database.

According to the ionosphere plasma density measurements on EISCAT 42m radar the PCPs were registered after the
development of the geomagnetic storm, in time interval 08.00-12.00 UT (11-15 MLT) – Figure 6. The ionosphere plasma
density ΔN_e increases during PCPs from $5 \cdot 10^4$ to $7 \cdot 10^5$ cm⁻³ at altitude about 321 km. The negative bay in geomagnetic field
345 variations with amplitude about 300 nT is seen on NYA station.

During this event the strong GPS phase scintillations (0.5-0.8 radians) were registered in whole time interval of the PCPs
appearance. Amplitude S4 index has no any clear response to the PCPs. It was observed VTEC increase (from 5 to 18
TECU) caused by the PCPs contribution. ROT variations have high values (7 TECU/min).

For the all of the considered PCPs cases phase index has the value less than 1.

350 3.5. Statistical analysis

To confirm statistically results of our case studies we present 4 tables which include values of phase scintillation index, ROT
values for the considered types of the ionosphere disturbances. Table 2 and Table 3 also include magnitude of the
355 geomagnetic field disturbance (X-component) for the substorms, SSC/SI events. Often during one day some types of the
ionosphere disturbances was observed.

Table 1 presents 33 dayside/cusp precipitations events: phase scintillation index is less than 1 radian with the medium values
about 0.5-0.6 radian. ROT values are no more than 6 TECU/min.

Table 2 presents 35 substorm events. For many substorm events phase scintillation index is more than 1, ROT values are no
360 more than 6 TECU/min. The maximum value of the phase scintillations are 2.9 radian fixed for the 20 January 2010 event
when the geomagnetic field disturbance ΔX at NYA stations was about 750 nT. We also select separately substorms which
were observed during the PCPs appearance. It is seen from the substorm statistics that in general phase index increase
correlate with the level of the geomagnetic disturbance. But sometimes even small amplitude substorms lead to the

Удалено: At latitudes of stations the PCP manifests its influence on the long lasting substorm (more than 4 hours duration) with the amplitude

Удалено: GPS signals scintillations are influenced by polar cap patches propagating on the dayside

Удалено: The typical example of the interaction region on 7 November 2013. It was observed during the storm conditions, the SYM-H index reached the value about -55 nT. According to the ionosphere plasma density measurements on EISCAT 42m radar the PCPs were registered in time interval 08.00-12.00 UT (11-15 MLT) – Figure 8. The influence of the geomagnetic field variations on the amplitude about 200 nT seen on the NYA station. ¶ During this event the strong GPS phase scintillations (0.8 radians) were registered in whole time interval of the PCPs appearance. Amplitude S4 index have no any clear response. ¶ It was observed VTEC increase (from 5 to 18 TECU) caused by the PCPs contribution. ROT variations have high values (7 TECU/min). ¶ [Jin et al., 2017] investigated the influence of the geomagnetic field variations on GPS phase scintillations around cusp region. It is confirmed that cusp precipitation has strong influence on GPS phase scintillations. It combined with the PCP. Our results also confirm this finding. The event on 22 January 2016 (Figure 1) was observed during the storm conditions while event on 7 November 2013 was accompanied by PCP. ¶

Удалено: ¶ **<#> Precipitations associated with interplanetary shock arrival**

¶ It is also considered the example of the interplanetary shock influence on the GPS signals scintillations for example for the event of 22 January 2016 presented. It is well known that the interplanetary shock interaction with Earth's magnetosphere leads to the particle precipitation into the atmosphere and leads to the appearance of the aurora and shock-aurora [Zhou et al., 2016]. In our paper [Belakhovskiy et al., 2017] we showed that shock wave arrival leads to the increase of the TEC at high latitudes. The considered interplanetary shock was accompanied by an abrupt increase of the solar wind velocity (from 320 to 400 km/s) and density (from 20 to 40 cm⁻³). The module of the interplanetary magnetic field (from 12 to 25 nT) according to the OMNI database, abrupt growth of the

465 [significant values of the phase index when it combined with the PCPs. Possibly presence of the PCPs give growth to the level of scintillations \(Jin et al., 2014; Clausen et al. 2016\).](#)

470 [Table 3 presents 14 SSC/SI events. Shock induced precipitations lead to medium values of the phase scintillation index \(0.4-0.5 radians\), and medium values of the ROT \(4-6 TECU/min\). SSC events when it was observed on nighttime often trigger the development of the geomagnetic substorm. So high values of the phase scintillations \(near 1 radian\) can be caused by the triggering of the substorm immediately after SSC. Often there is no significant increase of the GPS phase scintillations was observed after the SSC.](#)

[Table 4 shows 38 daytime and nighttime PCPs events. It is seen from the Table 3 that PCPs are less than 1. Analysis of the tables 3 shows that PCPs produce more strong ROT variations \(even >10 TECU/min\) than other types of the polar latitude ionosphere disturbances.](#)

475 [Jin et al. \(2017\) investigated the GPS scintillations around cusp region and found that cusp precipitations have stronger influence on GPS phase scintillation when it combined with the PCPs. Our research shows that daytime PCPs can produce stronger GPS phase scintillations than dayside/cusp precipitations. See Table 1 and Table 4.](#)

480 [It is also seen from the Tables that often one type of the ionosphere disturbances was registered during several consecutive days. For example for the PCPs it is 28-30 November 2011, 4-6 November 2013, 20-26 January 2014, for the substorms it is 10-13 December 2015, for the cusp/daytime precipitation it is 17-19 December 2014. Of course there are more events with significant increase of the phase scintillations during 2010-2017 years. But we pay attention mainly to the events when the GPS and EISCAT data were available simultaneously to precisely define the physical nature of the ionosphere disturbance. Only for the SSC/SI events we not always used the EISCAT radar data. So analysis of the group of the events confirms in general the detail analysis of the individual events.](#)

485

4. Discussion

The high-latitude ionosphere is a very dynamic structure due to the charge particles (mainly electrons and protons) penetrating from the outer space which can lead to the appearance of the different times-scale ionosphere irregularities.

490 Variations of the ionospheric electron density cause variable group delay and phase advance of the radio wave, resulting in rapid phase fluctuations or phase scintillations. The scintillations of the GPS radio signal [are](#) caused by refraction and diffraction of radio waves passing through ionospheric irregularities on scales from tens of meters to a few kilometers (Basu et al., 1998; Kintner et al., 2007). [There is a problem of the finding of optimal cutoff frequency during phase detrending. The choice of the standard cutoff frequency \(0.1 Hz\) can lead to the presence of the refractive variations in phase scintillation index \(Forte, 2005; Mushini et al., 2012; Ghobadi et al., 2020; Spogli et al., 2021\).](#)

495

There are a lot of disturbances at polar ionosphere. The main phenomena are substorm and polar cap patches. In this work it is considered the influence of different types of the high latitude ionosphere disturbances (such [as](#) dayside/cusp precipitation, substorms, nighttime and daytime polar cap patches, interplanetary shock wave) on perturbations of GPS signals with using

Удалено: is

Удалено: [

Удалено:]

Удалено: u

GPS scintillation receiver on Svalbard. For some events also SKN GPS scintillation receiver on mainland (Norway) was used. [In this paper we present case studies and statistical analysis.](#)

505 Concerning amplitude GPS scintillations at high latitudes we confirm the previous findings and did not find any certain reaction of the S4 index to the considered disturbances. However, [Jin et al. \(2018\)](#) have found S4 scintillations for the very strong geomagnetic storm on 17 March 2017. But it was extreme event. For the ordinary events S4 index at high latitudes [does not experience](#) great increases. Possibly low values of amplitude scintillations at high latitudes are caused by the low elevation angles of GPS satellites at these regions. [Since irregularities producing amplitude scintillations can be formed in the field-aligned direction. But this hypothesis needs to be tested.](#)

510 The analysis shows that the polar substorms even if it observed without [PCPs](#) lead to the maximum values of the phase scintillation index (1.5-3 radians). From one side it is obvious because the substorm is a most powerful disturbance in the magnetosphere-ionosphere system, [it leads to the growth of the ionosphere plasma density on two orders](#). The ULF waves (Pi3 pulsations) embedded into substorm can accelerate electron along the [geomagnetic](#) field lines and produce auroral arcs.

515 The duration of the substorm [is](#) about 1.5-3 hours while the growth of the phase scintillation index was observed during 30-40 minute (expansion phase). So the substorm leads to the high but short-time growth of the phase index. In paper [\(Kim et al., 2014\)](#) it is shown that ULF waves in Pi2 frequency range [have](#) a dominant role in producing accelerated auroral electrons. During the substorms bright and discrete auroral forms are appeared on the sky. Such inhomogeneous ionization structures produce significant changes in the refractive index and enhance the phase scintillation index [\(Hosokawa, 2014\)](#). In

520 addition, field-aligned currents, produced field-aligned irregularities, can be the major driver of high-latitude ionospheric irregularities [\(Prikryl et al., 2011\)](#).

[The phase scintillations are typically produced by variations in the refractive index due to ionospheric irregularities of the scale from a few kilometers to a few tens of kilometers \(Kintner et al. 2007\)](#). The phase scintillations during the substorm interval were produced through the refractive process caused by large-scale density irregularities associated with rapidly

525 moving auroral arc. Hosokawa et al. [\(2014\)](#) found that phase scintillation was enhanced in relation to substorm onset and decreased as the aurora became more diffuse. They suggested that discrete aurora in the GPS signal path is necessary for the occurrence of phase scintillations during substorm intervals. In addition to scintillation, other effects such as loss of lock [\(Smith et al., 2008\)](#) and cycle slips [\(Prikryl et al., 2010\)](#) have been directly observed in relation to auroral emissions. [The long-term statistical study \(De Franceschi et al., 2019\) over Svalbard for the 2013-2016 years shows that magnetic midnight region is the most exposed to scintillations.](#)

530 Polar cap patches are the source of decameter to kilometer-scale irregularities causing scintillations. In some of the considered cases the polar cap patches [were](#) observed during 6 hours on EISCAT 42m radar. Analysis shows that PCPs are accompanied by the lower values of phase index than during a substorm but this growth is registered during longer time intervals. At the same time the PCPs [lead](#) to the substantially higher values of the ROT variations. ROT is the time rate of

535 change of the differential carrier phases, it providing information about scale size of the electron density irregularities scale which produces GPS signal scintillations. We used in our study 1-minute ROT time resolution. The typical velocity of the

Удалено: In this study we statistical investigation conc degree of influence of PCP, GPS signals disturbances. H only typical events.

Удалено: [

Удалено: ,

Удалено:]

Удалено: haven't

Удалено: polar cap patch

Удалено: 2

Удалено: s

Удалено: are

Удалено: [

Удалено:]

Удалено: can

Удалено: [

Удалено:]

Удалено: [

Удалено:]

Удалено: ¶

Удалено: [

Удалено:]

Удалено: [

Удалено:]

Удалено: [

Удалено:]

Удалено: [

Удалено:]

Удалено: as

Удалено: s

570 plasma convection at high latitudes is between 100 m/s and 1 km/s. So 1-minute ROT variations are caused by the irregularities with the scale about 6-60 km. Our observations suggest that the substorms and PCPs, being different types of the high-latitude disturbances, lead to the development of different types and scales of ionospheric irregularities.

Comparison of the EISCAT observations on Svalbard and in Tromso shows that during PCPs appearance on Svalbard a typical substorm at lower latitudes (Tromso) was observed. The level of the phase scintillations are quite comparable at high (Tromso) and polar (Svalbard) latitudes but the level of ROT is higher at polar latitudes.

575 There are two plasma instabilities which can explain the ionospheric irregularities at high latitudes: the gradient drift instability (GDI) and the Kelvin–Helmholtz instability (KHI). The GDI requires a density gradient and it can produce irregularities at the trailing edge of a plasma patch, while the KHI requires a velocity shear and the irregularities can be created around boundaries of velocity shears. The GDI can work on these sharp density gradients very efficiently (Moen et al., 2013) to produce small-scale irregularities which cause scintillations. The polar cap patches represent the largest scale structure in the high latitude ionosphere. During their convection in the polar cap, the Gradient Drift Instability (GDI) acts on them and develops small scale irregularities on the trailing edge.

580 The identifications of the cusp region with using the SuperDARN and all-sky cameras were done in our study. Cusp region is a source of the plasma turbulence of the different scales. It is found the medium growth of the TEC and ROT near the cusp region. Cusp phase scintillations are lower than dayside PCPs scintillations. On the dayside, the cusp is an active region of the GPS scintillation (Moen et al., 2013), where loss of signal locks occurs (Oksavik et al., 2015). By analyzing GPS phase scintillations around magnetic noon, it is suggested that GPS phase scintillations are sensitive to a combination of the cusp aurora and the intake of solar EUV-ionized plasma (Jin et al., 2015).

585 The common analysis shows that for all of the considered events the significant phase scintillations were observed. PCPs lead to the prolonged variations of phase index but with smaller values (less than 1). Shock induced precipitations, daytime and cusp precipitations lead to the medium values of phase index (0.4-0.5 radians) and medium values of the ROT. But among the all types of the disturbances the substorms leads to the greatest values of the phase scintillations index. Thus, the substorm precipitations have the strongest impact on the scintillations of GPS radio signals in the polar ionosphere even without PCPs. Substorm leads to short-time (10-20 minute) and strongest values of GPS phase scintillations while PCPs to long-time (some hours) medium values of GPS phase scintillations. So both types of these ionosphere disturbances are dangerous for the quality of communications, navigations, and locations at polar latitudes.

595

5. Conclusions

It is considered the influence of different types of the high latitude ionosphere disturbances (such as daytime/cusp precipitations, substorms, nighttime and daytime polar cap patches, interplanetary shock wave) on perturbations of GPS signals with using receivers on Svalbard and in Skibotn. All of the considering types of the ionospheric disturbances lead to the growth of phase scintillations index and ROT variations.

600

Удалено: PCP manifest i latitudes as typical substorm quite comparable phase scin high (Tromso) and polar (Sv latitudes

Удалено: [

Удалено:]

Удалено: ¶

It was done in our study the of the cusp regions with usin SuperDARN ionosphere refl and optical data

Удалено: ,

Удалено: [

Удалено:]

Удалено: is known to occ

Удалено: [

Удалено:]

Удалено: [

Удалено:]

Удалено: in

Удалено: we observed

Удалено: s

Удалено: not high

Удалено: s

Удалено: u

Удалено: s

630 Substorms (even without PCPs) lead to the maximum values of the phase scintillation index (1.5-3 radians). The growth of the phase index observed mainly during the substorm expansion phase. ULF waves in Pi3 frequency range during a substorm producing auroral arcs can lead to such high values of the phase scintillation index.

The value of the substorm phase scintillations in general correlate with the value of the geomagnetic field disturbance. But sometimes even small geomagnetic substorms when it combined with the PCPs produce quite strong phase scintillations.

635 Polar cap patches lead to the prolonged variations of phase index with smaller values (less than 1). At the same time polar cap patches can lead to strong ROT variations (10-15 TECU/min) in comparison with the substorms disturbances. So our observations suggest that the substorms and PCPs, being different types of the high-latitude disturbances, lead to the development of different types and scales of ionospheric irregularities.

640 Cusp region, identified with using SuperDARN radar, leads to the moderate growth of phase scintillation index and ROT variations. Shock induced precipitations lead to medium values of the phase scintillation index (0.4-0.5 radians), and medium values of the ROT (4-6 TECU/min). Our analyses shows that there is no clear response of the amplitude scintillation index to the different types of the ionosphere disturbances.

645 **Code and data availability.** The authors thank the Norwegian Polar Research Institute at Ny-Ålesund for assisting us with the GPS receiver in Ny-Ålesund, Bjørn Lybekk and Espen Trondsen for the instrument operations. The IMF data are provided by the NASA OMNI Web service (<http://omniweb.gsfc.nasa.gov>).

650 The authors wish to thank IMAGE (<http://www.ava.fmi.fi/image/>), EISCAT groups for the available data. EISCAT is an international association supported by research organizations in China (CRIRP), Finland (SA), Japan (NIPR and STEL), Norway (NFR), Sweden (VR), and the United Kingdom (NERC). Data from EISCAT can be obtained from the Madrigal database <http://www.eiscat.se/madrigal>. The University of Oslo ASI data are available at <http://tid.uio.no/plasma/aurora>.
The authors acknowledge the use of SuperDARN data. SuperDARN is a collection of radars funded by national scientific funding agencies of Australia, Canada, China, France, Italy, Japan, Norway, South Africa, United Kingdom and the United States of America.

655 **Author contributions.** VB take a part in formulation of the problem, analyze events, do conclusions, and write text with contributions from all the co-authors. YJ take a part in formulation of the problem, process GPS, optical data, correct text. WM take a part in formulation of the problem, organize this research team.

Competing interests. The authors declare that they have no conflict of interest.

660 **Acknowledgements.** This work is supported by the Russian Science Foundation (grant # 18-77-10018).

Удалено: 2

Удалено: , TEC

Удалено: s

Удалено: ,

Удалено: GPS

References

- Alfonsi L., Spogli L., De Franceschi G., Romano V., Aquino M., Dodson A. and Mitchell C. N.: Bipolar climatology of GPS ionospheric scintillation at solar minimum, *Radio Science*, 46, RS0D05, <https://doi.org/10.1029/2010RS004571>, 2011.
- 670 | André R., Pinnock M., Rodger A. S.: Identification of the low-altitude cusp by Super Dual Auroral Radar Network radars: A physical explanation for the empirically derived signature, *J. Geophys. Res.*, Vol. 105, № 12, P. 27081-27094, <https://doi.org/10.1029/2000JA900071>, 2000.
- Basu S., Groves K. M., Basu S. and Sultan P.J.: Specification and forecasting of scintillations in communication/navigation links: Current status and future plans, *Journal of Atmospheric and Solar-Terrestrial Physics*, 64 (16), 1745–1754, [https://doi.org/10.1016/S1364-6826\(02\)00124-4](https://doi.org/10.1016/S1364-6826(02)00124-4), 2002.
- 675 | Belakhovsky V., Pilipenko V., Murr D., Fedorov E., Kozlovsky A.: Modulation of the ionosphere by Pc5 waves observed simultaneously by GPS/TEC and EISCAT, *Earth, Planets and Space*, Vol. 68., article id.102, <https://doi.org/10.1186/s40623-016-0480-7>, 2016.
- Belakhovsky V.B., Pilipenko V.A., Sakharov Ya.A., Lorentzen D.L., Samsonov S.N.: Geomagnetic and ionospheric response to the interplanetary shock on January 24, 2012, *Earth, Planets and Space*, Vol. 69, Issue 1, article id. #105., <https://doi.org/10.1186/s40623-017-0696-1>, 2017.
- 680 | Belakhovsky V. B., Jin Y., Miloch W. J.: Influence of Different Ionospheric Disturbances on the GPS Scintillations at High Latitudes, *Springer Proceedings in Earth and Environmental Sciences, Problems of Geocosmos–2018*, P. 281-287. https://doi.org/10.1007/978-3-030-21788-4_24, 2020.
- Carrano C. S., Anghel A., Quinn R.A., and Groves K.M.: Kalman filter estimation of plasmaspheric total electron content using GPS, *Radio Science*, 44, RS0A10, <https://doi.org/10.1029/2008RS004070>, 2009.
- Clausen L. B. N., Moen J. I., Hosokawa K., Holmes J. M.: GPS scintillations in the high latitudes during periods of dayside and nightside reconnection, *J. Geophys. Res.*, 121, 3293–3309, <https://doi.org/10.1002/2015JA022199>, 2016.
- Crowley G., Ridley A. J., Deist D., Wing S., Knipp D. J., Emery B. A., Foster J., Heelis R., Hairston M., and Reinisch B. W.: Transformation of high-latitude ionospheric F region patches into blobs during the March 21, 1990, storm, *J. Geophys. Res.*, 105, A3, 5215–5230, <https://doi.org/10.1029/1999JA900357>, 2000.
- 690 | [De Franceschi G., Spogli L., Alfonsi L., Romano V., Cesaroni C., Hunstad I. The ionospheric irregularities climatology over Svalbard from solar cycle 23, *Scientific reports*, 9, 1, 1-14, <https://doi.org/10.1038/s41598-019-44829-5>, 2019.](#)
- [Forte B. Optimum detrending of raw GPS data for scintillation measurements at auroral latitudes, *Journal of Atmospheric and Solar-Terrestrial Physics*, 67, 1100–1109, <https://doi.org/10.1016/j.jastp.2005.01.011>, 2005.](#)
- 695 | Foster J.C., Coster A.J., Erickson P.J., Holt J.M., Lind F.D., Rideout W., McCready M., A. van Eyken, Barnes R.J., Greenwald R.A., Rich F.J.: Multiradar observations of the polar tongue of ionization, *J. Geophys. Res.*, 110, A09S31, <https://doi.org/10.1029/2004JA010928>, 2005.

Удалено: ournal

Удалено: of

- 700 [Fremouw E.J., Leadabrand R.L., Livingston R.C., Cousins M.D., Rino C.L., Fair B.C., Long R.A. Early results from the DNA wideband satellite experiment — complex-signal scintillation, *Radio Science*, 13\(1\), 167–187, <https://doi.org/10.1029/RS013i001p0016>, 1978.](https://doi.org/10.1029/RS013i001p0016)
- [Ghobadi H., Spogli L., Alfonsi L., Cesaroni C., Cicone A., Linty N., Romano V., Cafaro M. Disentangling ionospheric refraction and diffraction effects in GNSS raw phase through fast iterative filtering technique, *GPS Solutions*, 24, 1-13, <https://doi.org/10.1007/s10291-020-01001-1>, 2020.](https://doi.org/10.1007/s10291-020-01001-1)
- 705 Hosokawa K., Shiokawa K., Otsuka Y., Nakajima A., Ogawa T., and Kelly J. D.: Estimating drift velocity of polar cap patches with all-sky airglow imager at Resolute Bay, Canada, *Geophysical Research Letters*, 33, L15111, <https://doi.org/10.1029/2006GL026916>, 2006.
- Hosokawa K., Otsuka Yu., Ogawa Y. and Tsugawa T.: Observations of GPS scintillation during an isolated auroral substorm, *Progress in Earth and Planetary Science*, 1:16, <https://doi.org/10.1186/2197-4284-1-16>, 2014.
- 710 Jin Y., Moen J., Miloch W.: GPS scintillation effects associated with polar cap patches and substorm auroral activity: direct comparison, *Journal of Space Weather and Space Climate*, 4, A23, <https://doi.org/10.1051/swsc/2014019>, 2014.
- Jin Y., Moen J. I., and Miloch W. J.: On the collocation of the cusp aurora and the GPS phase scintillation: A statistical study, *J. Geophys. Res.*, 120, 9176–9191, <https://doi.org/10.1002/2015JA021449>, 2015.
- 715 Jin Y., Moen J. I., Miloch W. J., Clausen L. B. N., and Oksavik K.: Statistical study of the GNSS phase scintillation associated with two types of auroral blobs, *J. Geophys. Res.*, 121, 4679–4697, <https://doi.org/10.1002/2016JA022613>, 2016.
- Jin Y., Moen J. I., Oksavik K., Spicher A., Clausen L. B.N., Miloch W. J. GPS scintillations associated with cusp dynamics and polar cap patches: *J. Space Weather Space Clim.*, 7, A23. <https://doi.org/10.1051/swsc/2017022>, 2017.
- Jin Y., Oksavik K. GPS scintillations and losses of signal lock at high latitudes during the 2015 St. Patrick’s Day storm. *J. Geophys. Res.*, 123, 7943–7957, <https://doi.org/10.1029/2018JA025933>, 2018.
- 720 Kim H., Clauer C.R., Deshpande K., Lessard M.R., Weatherwax A.T., Bust G.S., Crowley G., Humphreys T.E.: Ionospheric irregularities during a substorm event: Observations of ULF pulsations and GPS scintillations, *Journal of Atmospheric and Solar-Terrestrial Physics*, 114, 1–8, <http://dx.doi.org/10.1016/j.jastp.2014.03.006>, 2014.
- Kinrade J., Mitchell C.N., Smith N.D., Ebihara Y., Weatherwax A.T., and Bust G.S.: GPS phase scintillation associated with optical auroral emissions: First statistical results from the geographic South Pole, *J. Geophys. Res.*, 118, 2490–2502, <https://doi.org/10.1002/jgra.50214>, 2013.
- 725 Kintner P. M., Ledvina B. M., and De Paula E. R.: GPS and ionospheric scintillations, *Space Weather*, 5, S09003, <https://doi.org/10.1029/2006SW000260>, 2007.
- Lockwood M., and Carlson Jr. H. C.: Production of polar cap electron density patches by transient magnetopause reconnection, *Geophys. Res. Lett.*, 19, 1731–1734, <https://doi.org/10.1029/92GL01993>, 1992.
- 730 Lorentzen D. A., Moen J., Oksavik K., Sigernes F., Saito Y., and Johnsen M. G.: In situ measurement of a newly created polar cap patch, *J. Geophys. Res.*, 115, A12323, <https://doi.org/10.1029/2010JA015710>, 2010.

- Moen J., Oksavik K., Alfonsi L., Daabakk Y., Romano V., and Spogli L.: Space weather challenges of the polar cap ionosphere, *J. Space Weather and Space Clim.*, 3, A02, <https://doi.org/10.1051/swsc/2013025>, 2013.
- 735 [Mushini S.C., Jayachandran P.T., Langley R.B., MacDougall J.W., Pokhotelov D. Improved amplitude and phase-scintillation indices derived from wavelet detrended high-latitude GPS data, *GPS Solutions*, 16, 3, 363-373, <https://doi.org/10.1007/s10291-011-0238-4>, 2012.](https://doi.org/10.1007/s10291-011-0238-4)
- Oksavik K., Moen J., Lester M., Bekkeng T.A., and Bekkeng J. K.: In situ measurements of plasma irregularity growth in the cusp ionosphere, *J. Geophys. Res.*, 117, A11301, <https://doi.org/10.1029/2012JA017835>, 2012.
- 740 Oksavik K., Van der Meer C., Lorentzen D.A., Baddeley L.J., and Moen J.: Scintillation and loss of signal lock from poleward moving auroral forms in the cusp ionosphere, *J. Geophys. Res.*, 120, 9161–9175, <https://doi.org/10.1002/2015JA021528>, 2015.
- Pilipenko V., Belakhovsky V., Engebretson M. J., Kozlovsky A., Yeoman T.: Are dayside long-period pulsations related to the cusp?, *Ann. Geophys.*, 33, P. 395-404, <https://doi.org/10.5194/angeo-33-395-2015>, 2015.
- 745 Prikryl P., Jayachandran P. T., Mushini S. C., Pokhotelov D., MacDougall J.W., Donovan E., Spanswick E., St.-Maurice J.-P.: GPS TEC, scintillation and cycle slips observed at high latitudes during solar minimum, *Ann. Geophys.*, 28, 1307–1316, <https://doi.org/10.5194/angeo-28-1307-2010>, 2010.
- Prikryl P., Jayachandran P.T., Mushini S.C., Chadwick R.: Climatology of GPS phase scintillation and HF radar backscatter for the high-latitude ionosphere under solar minimum conditions, *Ann. Geophys.*, 29, 377–392, <https://doi.org/10.5194/angeo-29-377-2011>, 2011.
- 750 Rostoker G., Akasofu S.-I., Foster J., Greenwald R., Kamide Y., Kawasaki K., Lui A., McPherron R., and Russel C.: Magnetospheric substorms—definition and signatures, *J. Geophys. Res.*, 85(A4), 1663–1668, <https://doi.org/10.1029/JA085iA04p01663>, 1980.
- Smith A.M., Mitchell C.N., Watson R.J., Meggs R.W., Kintner P. M., Kauristie K., Honary F.: GPS scintillation in the high arctic associated with an auroral arc, *Space weather*, vol. 6, s03d01, <https://doi.org/10.1029/2007SW000349>, 2008.
- 755 [Spogli L., Ghobadi H., Cicone A., Alfonsi L., Cesaroni C., Linty N., Romano V., and Cafaro M. Adaptive Phase Detrending for GNSS Scintillation Detection: A Case Study Over Antarctica, *IEEE Geoscience and Remote Sensing Letters*, <https://doi.org/10.1109/LGRS.2021.3067727>, 2021.](https://doi.org/10.1109/LGRS.2021.3067727)
- Van Dierendonck A.J., Klobuchar J., Hua Q.: Ionospheric Scintillation Monitoring Using Commercial Single Frequency C/A Code Receivers. Paper presented at Proceedings of the 6th International Technical Meeting of the Satellite Division of The Institute of Navigation (ION GPS 1993), Salt Lake City, UT, September 22–24, 1993.
- 760 Van der Meer C., Oksavik K., Lorentzen D., Moen J. I., Romano V.: GPS scintillation and irregularities at the front of an ionization tongue in the nightside polar ionosphere, *J. Geophys. Res.*, 119, 8624–8636, <https://doi.org/10.1002/2014JA020114>, 2014.

- 765 Van der Meeren C., Oksavik K., Lorentzen D.A., Rietveld M.T., and Clausen L.B.N.: Severe and localized GNSS
scintillation at the poleward edge of the nightside auroral oval during intense substorm aurora // *J. Geophys. Res.*, 120,
10,607–10,621, <https://doi.org/10.1002/2015JA021819>, 2015.
- Van der Meeren C., Oksavik K., Lorentzen D. A., Paxton L.J., Clausen L.B. N. Scintillation and irregularities from the
nightside part of a Sun-aligned polar cap arc, *J. Geophys. Res.*, 121, 5723–5736, <https://doi.org/10.1002/2016JA022708>,
770 2016.
- Zhang Q.-H., Zhang B.-C., Moen J., Lockwood M., McCrea I.W., Yang H.-G., Hu H.-Q., Liu R.-Y., Zhang S.-R., Lester M.
Polar cap patch segmentation of the tongue of ionization in the morning convection cell, *Geophys. Res. Lett.*, 40, 2918–
2922, <https://doi.org/10.1002/grl.50616>, 2013.
- Zhou X.-Y., Strangeway R.J., Anderson P.C., Sibeck D.G., Tsurutani B.T., Haerendel G., Frey H.U., Arballo J.K.: Shock
775 aurora: FAST and DMSP observation, *J. Geophys. Res.*, 108:8019, <https://doi.org/10.1029/2002JA009701>, 2003.

780

785

790

795

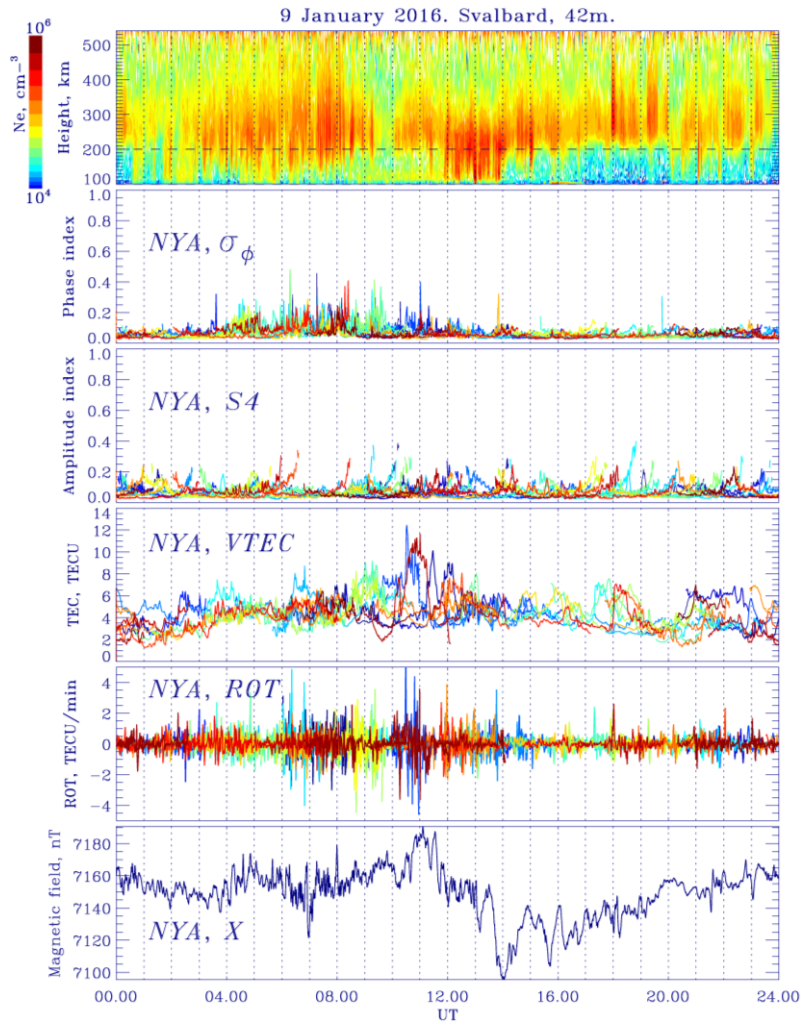
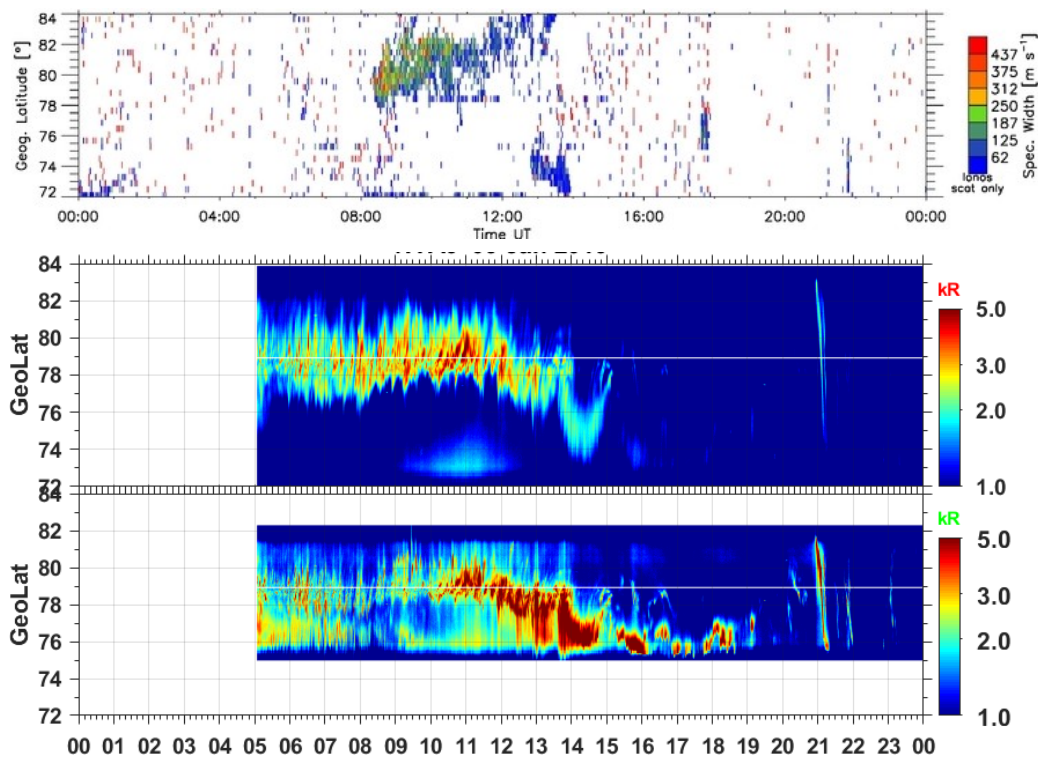


Figure 1: Ionosphere plasma density according to the EISCAT 42m radar data; phase scintillation index and amplitude scintillation index according to the GPS receiver at NYA station; TEC and ROT variations according to the GPS receiver at NYA station; geomagnetic field variations (X-component) at NYA station for the 9 January 2016.

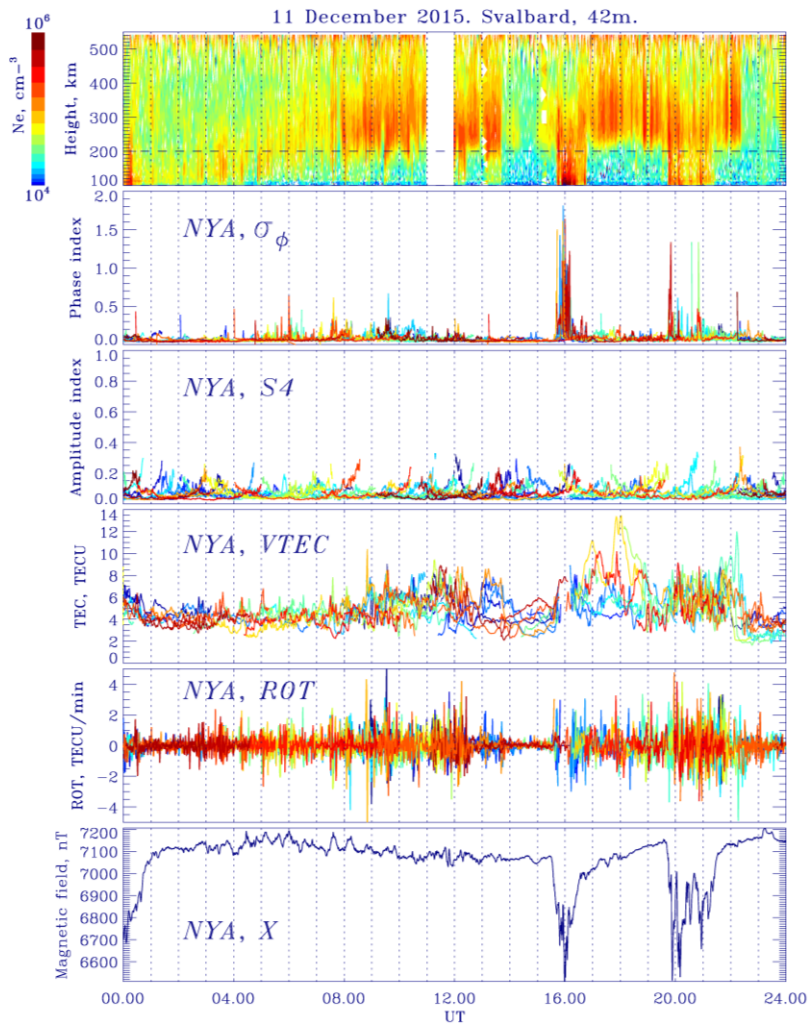
810

815



820 Figure 2: Latitude-time plot of the spectral width according SuperDARN Hankasalmi radar, keograms (557.7 nm and 630.0 nm
825 emission line) from the all-sky imager at NYA station for the 9 January 2016.

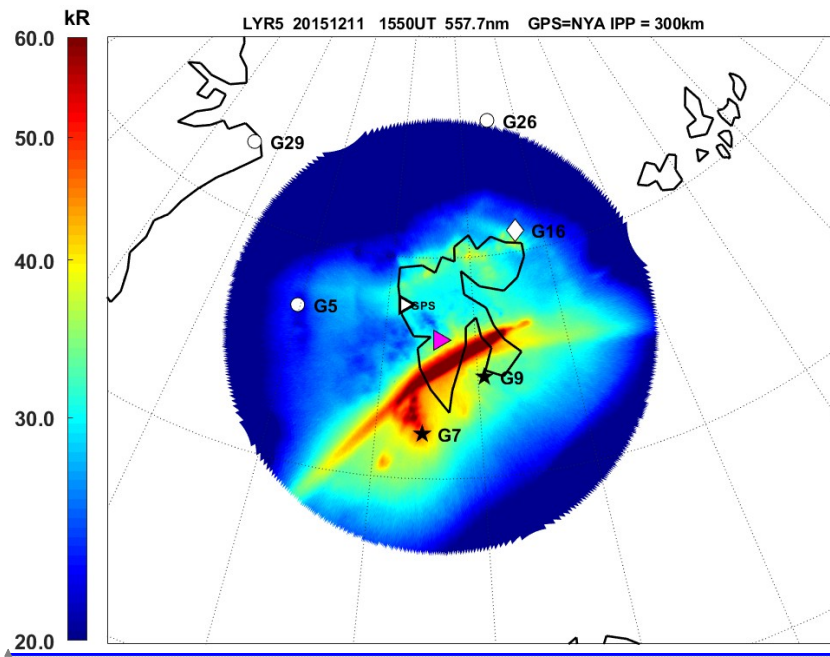
825



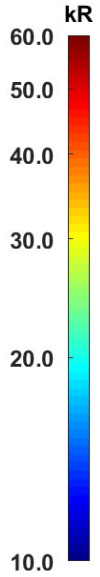
830

Figure 3: Ionosphere plasma density according to the EISCAT 42m radar data; phase scintillation index and amplitude scintillation index according to the GPS receiver at NYA station; TEC and ROT variations according to the GPS receiver at NYA station; geomagnetic field variations (X-component) at NYA station for the 11 December 2015.

835



Отформатировано: Ш
полулярный



Удалено:

Удалено: Figure 4: The
image (557.7 nm emission)
station projected into the r
15.50 UT 11 December 201

Figure 4: The all-sky camera image (557.7 nm emission) at LYR station projected into the map for the 15.50 UT 11 December 2015. The rose triangle is a EISCAT 42m radar, the white triangle is a GPS receiver on NYA station, the G7, G9, G5, G16, G29, G26 is a ionosphere pierce points of the corresponding GPS satellites.

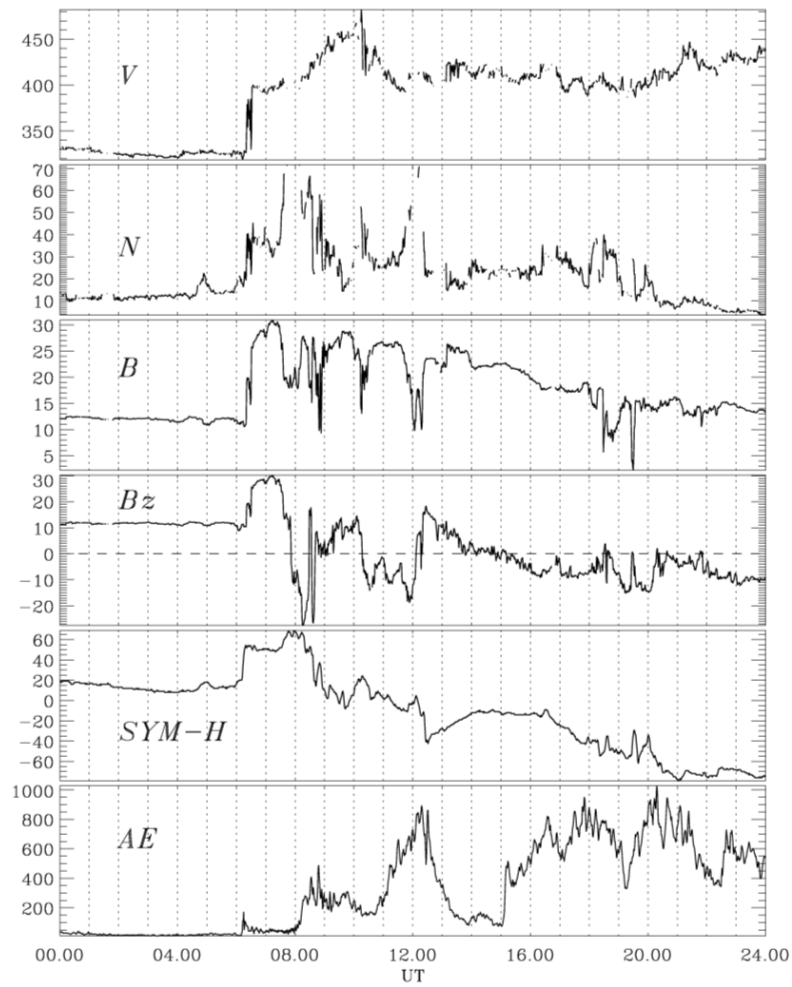


Figure 5: Solar wind speed V [km/s], solar wind density N [cm⁻³], magnitude of the IMF B [nT], B_z -component [nT] of IMF according to the OMNI database, SYM-H index [nT], AE index [nT] for the 22 January 2012.

860

865

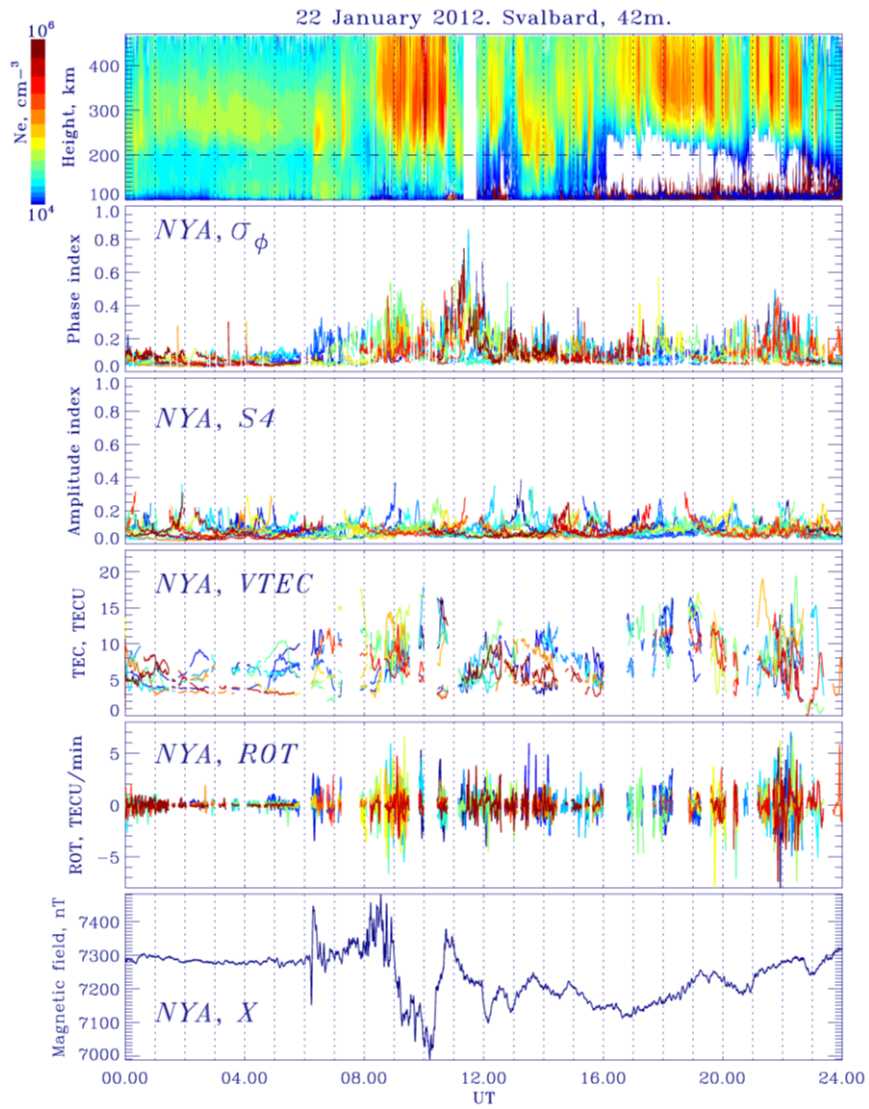
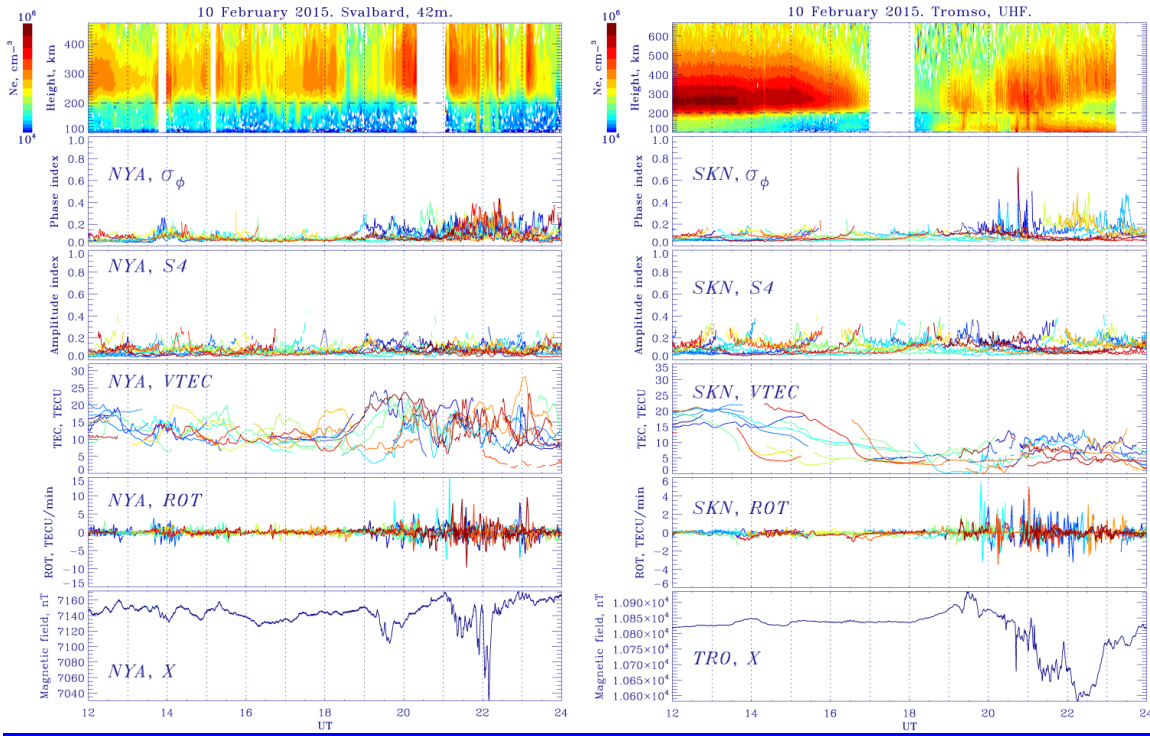


Figure 6: Ionosphere plasma density according to the EISCAT 42m radar data; phase scintillation index and amplitude scintillation index according to the GPS receiver at NYA station; TEC and ROT variations according to the GPS receiver at NYA station; geomagnetic field variations (X-component) at NYA station for the 22 January 2012.

870

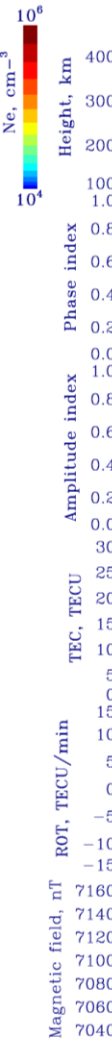
Удалено: 10



880

Figure 7: Left panel: ionosphere plasma density according to the EISCAT 42m data; phase, amplitude scintillation indexes, TEC and ROT variations according to the GPS receiver at NYA station; X-component of the geomagnetic field at NYA station. Right panel: ionosphere plasma density according to the UHF EISCAT data; phase and amplitude scintillation indexes, TEC and ROT variations according to the GPS receiver at SKN station; X-component of the geomagnetic field at TRO station for the 10 February 2015.

885



Удалено:
Figure 5: Ionosphere plasma density according to the EISCAT 42m data; phase scintillation index, amplitude scintillation index, the GPS receiver at NYA station and ROT variations according to the GPS receiver at NYA station; geomagnetic field variation (X-component) at NYA station for the 10 February 2015.

905

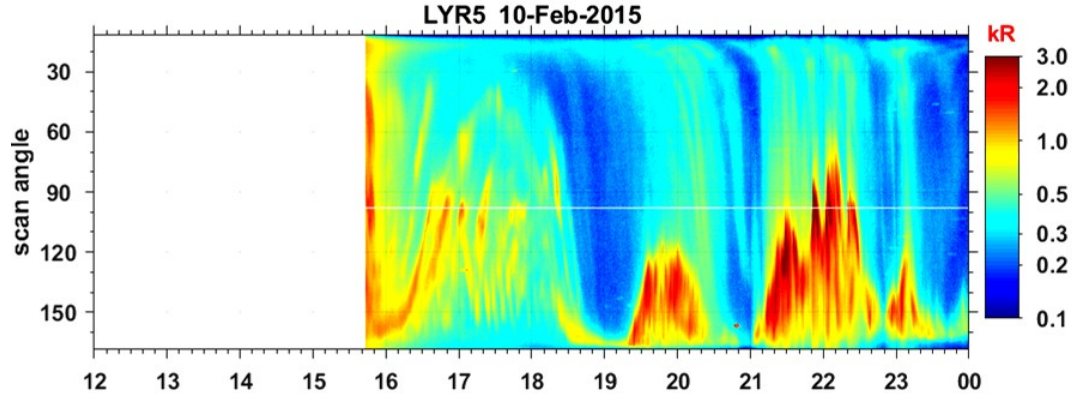
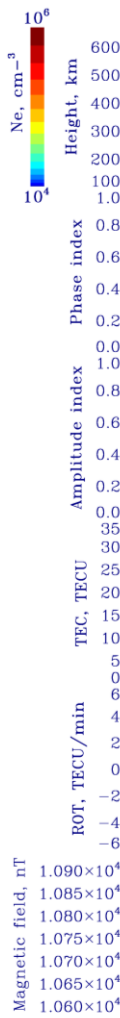


Figure 8: Keogram (630.0 nm emission line) from the all-sky imager at LYR station for the 10 February 2015.

910

915

920



Удалено:
 Figure 6: Ionosphere plasmaspheric data; phase scintillation index, amplitude scintillation index, the GPS receiver at SKN station and ROT variations according to the GPS receiver at SKN station, geomagnetic field variation (component) at TRO station on 10 February 2015.¶

Удалено: 7

935

Table 1. The values of the phase scintillation index, ROT, determined form GPS receiver at NYA station during dayside/cusp precipitation events.

940

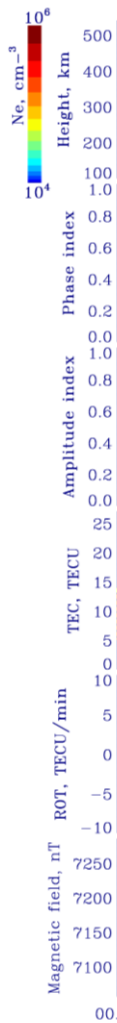
<u>Date</u> <u>(day/month/</u> <u>year)</u>	<u>Time, UT</u>	<u>Phase index,</u> <u>deg</u>	<u>ROT,</u> <u>TECU/</u> <u>min</u>
Dayside/cusp precipitation			
16.01.2012	09.00-14.00	0.7	4
09.01.2014	05.30-11.00	0.5	6
20.01.2014	08.00-10.00	0.9	4
21.01.2014	05.00-09.00	0.6	4
23.01.2014	04.00-07.00	0.85	4
25.01.2014	04.00-08.00	0.35	4
26.01.2014	06.00-09.00	0.35	3
17.12.2014	06.00-12.00	0.5	4
18.12.2014	05.00-10.00	0.55	3
19.12.2014	06.00-11.00	0.55	5
10.12.2015	05.00-11.30	0.6	5
11.12.2015	05.00-12.00	0.7	4
13.12.2015	05.00-12.00	0.55	5
06.01.2016	05.00-12.00	0.55	3.5
07.01.2016	05.00-12.00	0.6	4
09.01.2016	04.00-12.00	0.5	6
10.01.2016	05.00-12.00	0.7	4
12.01.2016	06.00-12.00	0.8	5
12.01.2016	14.00-16.00	0.5	6
06.02.2016	08.00-13.00	0.3	6
07.02.2016	09.00-14.00	0.4	6
08.02.2016	07.00-15.00	0.4	4
10.02.2016	06.00-12.00	0.35	3
05.10.2016	04.00-08.00	0.8	4
27.10.2016	07.00-11.30	0.65	4
01.12.2016	04.00-10.00	0.35	4
20.01.2017	12.00-14.00	0.5	4
25.01.2017	06.00-12.00	0.8	5
01.02.2017	08.00-12.00	0.6	4
02.02.2017	08.00-12.00	0.6	4
04.02.2017	11.00-14.00	0.75	6
17.12.2017	07.00-13.00	0.9	4
18.12.2017	05.00-12.00	0.7	4

945

950

955

960



Удалено:
Figure 8: Ionosphere plasma parameters according to the EISCAT data; phase scintillation index, amplitude scintillation index, the GPS receiver at NYA station and ROT variations according to the GPS receiver at NYA station; geomagnetic field variation (nT component) at NYA station, November 2013.

Table 2. The values of the phase scintillation index, ROT, determined from GPS receiver at NYA station, and corresponding levels of the geomagnetic field disturbance (ΔX) during different substorm and substorm during PCPs events.

<u>Date</u> <u>(day/month/year)</u>	<u>Time, UT</u>	<u>Phase</u> <u>index,</u> <u>deg</u>	<u>ROT,</u> <u>TECU/</u> <u>min</u>	<u>ΔX, nT</u>
Substorms				
20.01.2010	17.00	2.9	4	750
01.12.2011	02.30	1	3	300
01.12.2011	20.00	0.55	4	200
16.01.2012	21.00	1.15	4	300
09.01.2014	20.30	0.7	6	450
10.12.2015	17.00	1.8	6	550
10.12.2015	20.30	1	4	600
11.12.2015	16.00	1.8	—	600
11.12.2015	20.00	1.3	6	650
12.12.2015	21.30	1.1	2	180
12.12.2015	22.30	0.7	2	70
13.12.2015	21.00	1.3	2	120
06.01.2016	01.20	1.3	4	700
07.01.2016	20.00	0.75	4	250
10.01.2016	21.00	0.75	2	180
05.02.2016	19.30	1.2	6	300
08.02.2016	03.00	1.3	4	300
17.03.2016	17.30	1.6	4	650
17.03.2016	21.00	0.9	2	300
17.03.2016	22.00	0.9	4	170
03.10.2016	17.00	0.6	4	150
03.10.2016	19.00	1.6	4	600
27.10.2016	18.00	1.2	4	200
27.10.2016	21.00	1.35	5	500
20.01.2017	19.00	1.1	5	370
26.01.2017	19.30	1.1	4	400
27.01.2017	21.00	1.2	4.5	200
17.12.2017	20.30	1	4	400
18.12.2017	19.00	1.15	4	300
Substorms during PCPs				
28.11.2011	22.30	1.25	6	200
18.01.2012	23.00	1.15	4	75
04.12.2013	19.00	0.9	4	150
15.12.2014	19.00	1.3	6	110
11.01.2016	19.30	1.5	2	400
11.01.2016	23.00	0.5	6	200

1005

1010

Table 3. The values of the phase scintillation index, ROT, determined from GPS receiver at NYA station, and corresponding levels of the geomagnetic field disturbance (ΔX) during SSC/SI events.

1015

<u>Date</u> (day/month/year)	<u>Time, UT</u>	<u>Phase index, deg</u>	<u>ROT, TECU/min</u>	<u>ΔX, nT</u>
<u>SSC/SI events</u>				
<u>22.01.2012</u>	<u>06.20</u>	<u>0.4</u>	<u>4</u>	<u>300</u>
<u>24.01.2012</u>	<u>15.00</u>	<u>0.3</u>	<u>4</u>	<u>400</u>
<u>08.03.2012</u>	<u>11.00</u>	<u>0.35</u>	<u>3</u>	<u>200</u>
<u>14.07.2012</u>	<u>18.00</u>	<u>0.2</u>	<u>2.5</u>	<u>50</u>
<u>17.03.2013</u>	<u>06.00</u>	<u>0.8</u>	<u>3</u>	<u>550</u>
<u>02.10.2013</u>	<u>02.00</u>	<u>0.6</u>	<u>3</u>	<u>250</u>
<u>13.12.2013</u>	<u>13.30</u>	<u>0.3</u>	<u>2</u>	<u>50</u>
<u>12.09.2014</u>	<u>16.00</u>	<u>0.55</u>	<u>4</u>	<u>200</u>
<u>21.12.2014</u>	<u>19.30</u>	<u>0.7</u>	<u>7</u>	<u>80</u>
<u>07.01.2015</u>	<u>06.30</u>	<u>0.25</u>	<u>2</u>	<u>50</u>
<u>15.08.2015</u>	<u>08.30</u>	<u>0.3</u>	<u>2</u>	<u>400</u>
<u>14.12.2015</u>	<u>13.30</u>	<u>0.35</u>	<u>3</u>	<u>100</u>
<u>04.04.2017</u>	<u>04.40</u>	<u>0.5</u>	<u>3</u>	<u>70</u>
<u>07.09.2017</u>	<u>23.00</u>	<u>0.9</u>	<u>7</u>	<u>300</u>

1020

1025

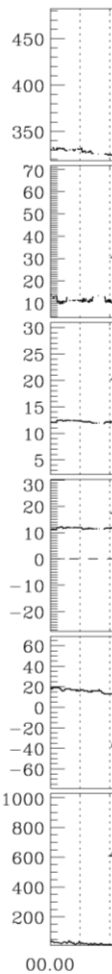
1030

1035

Table 4. The values of the phase scintillation index, ROT, determined form GPS receiver at NYA station during PCPs events.

<u>Date</u> (day/month/ year)	<u>Time, UT</u>	<u>Phase index,</u> <u>deg</u>	<u>ROT,</u> <u>TECU/ min</u>
Polar cap patches			
28.11.2011	17.00-22.00	0.4	8
29.11.2011	00.00-08.00	0.8	11
29.11.2011	14.00-22.00	0.4	6
30.11.2011	16.00-22.00	0.7	9
30.11.2011	10.00-14.00	0.5	7
18.01.2012	16.00-22.00	0.6	8
22.01.2012	08.00-12.00	0.9	6
22.01.2012	17.00-23.00	0.5	9
13.01.2013	17.00-22.00	0.6	10
04.11.2013	16.00-23.00	0.85	9
05.11.2013	20.00-24.00	0.35	6
06.11.2013	15.00-24.00	0.75	8
07.11.2013	06.00-12.00	0.8	10
04.12.2013	18.00-22.00	0.8	9
20.01.2014	08.00-10.00	0.9	3
21.01.2014	12.00-21.00	0.3	7
22.01.2014	06.30-15.00	0.8	7
22.01.2014	19.30-22.00	0.2	4
23.01.2014	19.00-22.00	0.4	7
24.01.2014	17.00-21.00	0.3	4
26.01.2014	18.00-24.00	0.3	2
28.01.2014	16.30-24.00	0.5	10
30.01.2014	19.00-22.00	0.3	5
18.12.2014	21.00-24.00	0.7	6
15.12.2014	09.00-24.00	0.4	7
16.12.2014	18.00-24.00	0.2	7
10.02.2015	20.00-24.00	0.4	15
11.02.2015	12.00-22.00	0.4	6
12.02.2015	15.00-23.00	0.3	7
13.02.2015	19.00-24.00	0.3	9.5
28.02.2015	17.00-23.00	0.35	11
20.03.2015	07.00-13.00	0.7	11
05.01.2016	12.00-18.00	0.4	5
07.02.2016	16.00-22.00	0.2	4
09.02.2016	19.00-23.00	0.2	4
09.02.2016	09.00-12.00	0.6	4
10.02.2016	18.00-23.00	0.2	4
12.02.2016	08.00-13.00	0.65	7

Удалено: ¶



Удалено: Figure 9: Solar wind speed, solar wind density N [cm^{-3}], the IMF B [nT], B_z -component of the IMF according to the OMNI database.

Удалено: Figure 10: Ionospheric plasma density according to the 42m radar data; phase scintillation and amplitude scintillation according to the GPS receiver station; TEC and ROT variations according to the GPS receiver station; geomagnetic field (B_z -component) at NYA station in January 2012.

We thank to the both referees for interest to our paper, careful reading and helpful comments and remarks. Below are our answers to the remarks.

ANSWER TO REFEREE 1:

Referee 1:

«It is mentioned in the paper that 150 events have been considered, but there is only data from 5 events used in the paper. This raises doubt about whether the conclusion in the paper is generally valid, or only valid for this set of events. If 150 events have been analyzed, I would expect there to be at least some summary of the results included in the paper. It should include at least some key statistics derived from the analysis of the 150 events...»

Answer:

To describe statistically our research we have added 4 tables and section 3.5 to the paper. These tables include 120 events: 33 cusp/daytime precipitations, 35 substorms, 14 SSC events and 38 PCPs. It is less than 150 events which were mentioned in previous variant of the paper. But the tables already are quite large. We have selected mainly interesting events. Of course we have considered much more event for the 2010-2017 years. But the paper cannot include all of these events. The data from the tables confirms our case studies.

We have decided to remove Figure 8 because now it is too much Figures and Tables. At the same time the dayside PCPs were also observed during another considered event 22 January 2012. The characteristics of the 7 November 2013 event are presented now in the Table 4. We have changed numeration of the Figures.

We also have combined Figures 5 and Figure 6 on same plot to better compare the level of GPS scintillations on Svalbard and in Scandinavia. Now it is Figure 7.

Referee 1:

«There are numerous language issues throughout the paper. While the errors are not critical for the understanding of the paper, it would be significantly improved by careful proof-reading».

Answer:

We have tried to remove the language issues.

Referee 1:

«Lines 84-91: You define the phase scintillation index twice. Fortunately, the definitions are the same. But you may want to delete one of the sentences».

Answer: We have corrected. Now we present only one definition of the phase scintillation index in the paper (Lines 105-107)

Referee 1:

«Line 125: The reference [Belakhovsky et al., 2019] does not match the reference list...»

Answer: We have corrected. Line 147.

Referee 1:

«Line 147: "Possibly it's due to the field of view of EISCAT radar not coincides with the field of view of GPS receivers." It is clear that the radar and the GNSS observations cannot fully overlap. But, is it possible to provide any more assessment of the degree of overlap?...

...for the case studies, have you checked which of the satellites (if any) actually passed through the region of the ionosphere that is observed by EISCAT?».

Answer: To show the degree of overlap of GPS satellites and EISCAT 42m radar we have plotted on Figure 4 the ionosphere projections of the GPS satellites, location of EISCAT radar and location of GPS receiver at NYA. Of course for the large scale disturbances (300-500 km and more) which was considered in the paper this overlap is not significant because several

ionosphere projection points of GPS satellites (2-4) are always located near field of view of the EISCAT radar. So practically we have continuous measurements of the ionosphere parameters determined by the NYA GPS receiver.

Lines 190-192.

Referee 1:

«Lines 187-188:

"The PCP is also identified in the aurora intensity variations as forms propagating from the polar to low latitudes in 630.0 nm (red line) emission (Figure 7) at 19.00-23.00 UT according to LYR all-sky camera observations."

The keogram seems to show multiple patches, not just one.

Are you using the abbreviation "PCP" to refer to a multitude of patches, instead of just one patch?... ».

Answer: It is corrected. Now we use abbreviation "PCPs" everywhere in the paper.

Referee 1:

«Lines 191-192: "At latitudes of SKN (TRO) stations the PCP manifests itself as a long lasting substorm (more than 4 hours duration) with the amplitude 200-250 nT."

A patch is not the same as a substorm...»

Answer: Yes, we agree. We rewrote this sentence.

Lines 234-235:

«During appearance of PCPs near the Svalbard at latitudes of the SKN (TRO) stations a long lasting substorm (more than 4 hours duration) with the amplitude 200-250 nT is observed».

Line 339-340:

«Comparison of the EISCAT observations on Svalbard and in Tromso shows that during PCPs appearance on Svalbard a typical substorm at lower latitudes (Tromso) was observed. The level of the phase scintillations are quite comparable at high (Tromso) and polar (Svalbard) latitudes».

Referee 1:

«Line 195 (Daytime polar cap patches): For a CIR event, I am interested to know the approximate solar wind properties. In particular, what was the maximum value of the solar wind speed. It is not required to include a plot of the solar wind data, just state the value in the text».

Answer: The solar wind speed for this event was about 390 km/s according to the OMNI database. But we have decided to remove this event as mentioned above due to large numbers of Figures and Tables. The characteristics of the 7 November 2013 event are presented now in the Table 4.

Referee 1:

«Lines 204-205: "cusp precipitation has stronger influence on GPS phase scintillation when it combined with the PCP. Our analyses also confirm this finding." You stated that "PCPs were registered in time interval 06.00-12.00 UT".

...

You have not stated the presence of precipitation at any time interval for this event. To reach your conclusion, did you make assumptions regarding the particle precipitation also for times when EISCAT did not directly observe precipitation? If so, please state the assumptions clearly in the text».

Answer: Yes, you are right. For the event 7 November 2013 there is no particle precipitation during PCPs appearance. We remove Figure 8 due to large number of Figures and Tables.

We rewrite this sentence (Line 278):

« [Jin et al., 2017] investigated the GPS scintillations around cusp region and found that cusp precipitation has stronger influence on GPS phase scintillation when it combined with the PCPs.

Our analyses show that daytime PCPs can produce stronger GPS phase scintillations than cusp/dayside precipitations».

Referee 1:

«Line 217: "module of the interplanetary magnetic field". Do you mean "magnitude of the interplanetary magnetic field"?».

Answer: Yes, we mean magnitude of the interplanetary magnetic field. It is corrected. Line 213.

Referee 1:

«Line 219: Please spell out the abbreviation "SSC" in full at its first occurrence.

Answer: We have indicated (Line 209).

Referee 1:

«Lines 243-244: "Possibly low values of amplitude scintillations at high latitudes are caused by the low elevation angles of GPS satellites at these regions". Please explain how observing at low elevation decreases the amount/magnitude of amplitude scintillation».

Answer: This is only hypothesis. The plasma irregularities producing high-latitudes scintillations mainly formed along the geomagnetic field. At polar latitudes (near Svalbard) the geomagnetic field is close to vertical. So radiowave beam of GPS satellite penetrate through the ionosphere not along geomagnetic field. If we will have satellite with higher inclination angle the amplitude scintillation possibly can be detected. But this hypothesis needs to be tested. Line 309.

ANSWER TO REFEREE 2:

Referee 2:

«My main concern is about the meaning of the phase scintillation index...»

Answer:

We agree with the referee that the problem of the GNSS signal detrending for the high-latitude disturbances is actual, the fixed cut-off frequency is not always able to remove the refractive (deterministic) effects at high latitudes. At the same time the choice of the optimal cut-off frequency is still open problem.

There are a lot of papers and results since [Fremouw et al., 1978] where the standard cut-off frequency (0.1 Hz) was used. So the classic definition of the phase and amplitude scintillation indexes already is established in literature.

The best way in this situation in our opinion is to introduce new scintillations indexes. Therefore, there will be clarity through the researchers. For example [Mushini, 2012] introduced improved phase-scintillation index, σ_{chain} , [Forte, 2005] introduced S_{ϕ} index.

We kept our events and we used the standard cut-off frequency (0.1 Hz) for the detrending. We mentioned in the paper about problem of the GPS signal detrending, we wrote that the term “phase scintillation index” used in our study means the phase fluctuations due to the presence of large-scale irregularities.

This text we pasted to the Introduction (Lines 41-52):

«The phase scintillations index is determined mainly by the diffractive (stochastic) GPS signal variations. In order to calculate scintillation indices a long-term trend caused by the satellite motion in relation to the receiver and ionosphere changes needs to be removed. A standard cutoff frequency (0.1 Hz) is commonly used for signal detrending since (Fremouw et al., 1978). This cutoff frequency is adequate for the equatorial and midlatitude ionosphere. But the high-latitude ionosphere is characterized by the high and variable ionospheric drift velocity (~100 m/s–1 500 m/s) which add refractive variations to the phase scintillation index. The value of the cutoff frequency affects on the phase scintillation index. So it often leads to the strong phase scintillations without amplitude scintillation. Some researchers to solve this problem introduce new scintillations indexes: Mushini et al. (2012) introduced improved phase-scintillation index (σ_{chain}), Forte (2005) introduced S_{ϕ} index. The fast iterative filtering signal decomposition technique was used to find optimal cutoff frequency (Ghobadi et al., 2020; Spogli et al., 2021). De Franceschi et al. (2009) have demonstrated the difficulty in finding the optimum cutoff frequency for statistical studies and they proposed to look for actual scintillations investigating the simultaneous occurrence of S4 and σ_{ϕ} increase».

This text we pasted to the chapter “2. Instruments” (Lines 110-113):

« In our paper we use the standard detrending (0.1 Hz) in order to be able to compare our results with previous results obtained with using this GPS receiver on Svalbard (Clausen et al., 2016; Jin et al., 2015, 2016, 2017, 2018). The choice of the fixed cutoff frequency can add refractive variations to the phase scintillation index. So term “phase scintillation index” used in our study means the phase fluctuations due to the presence of large-scale irregularities (above the Fresnel radius)».

We add some papers to the References:

- De Franceschi G., Spogli L., Alfonsi L., Romano V., Cesaroni C., Hunstad I. The ionospheric irregularities climatology over Svalbard from solar cycle 23, Scientific reports, 9, 1, 1-14, <https://doi.org/10.1038/s41598-019-44829-5>, 2019.

- Forte B. Optimum detrending of raw GPS data for scintillation measurements at auroral latitudes, *Journal of Atmospheric and Solar-Terrestrial Physics*, 67, 1100–1109, <https://doi.org/10.1016/j.jastp.2005.01.011>, 2005.
- Fremouw E.J., Leadabrand R.L., Livingston R.C., Cousins M.D., Rino C.L., Fair B.C., Long R.A. Early results from the DNA wideband satellite experiment — complex-signal scintillation, *Radio Science*, 13(1), 167–187, <https://doi.org/10.1029/RS013i001p0016>, 1978.
- Ghobadi H., Spogli L., Alfonsi L., Cesaroni C., Cicone A., Linty N., Romano V., Cafaro M. Disentangling ionospheric refraction and diffraction effects in GNSS raw phase through fast iterative filtering technique, *GPS Solutions*, 24, 1-13, <https://doi.org/10.1007/s10291-020-01001-1>, 2020.
- Mushini S.C., Jayachandran P.T., Langley R.B., MacDougall J.W., Pokhotelov D. Improved amplitude and phase-scintillation indices derived from wavelet detrended high-latitude GPS data, *GPS Solutions*, 16, 3, 363-373, <https://doi.org/10.1007/s10291-011-0238-4>, 2012.
- Spogli L., Ghobadi H., Cicone A., Alfonsi L., Cesaroni C., Linty N., Romano V., and Cafaro M. Adaptive Phase Detrending for GNSS Scintillation Detection: A Case Study Over Antarctica, *IEEE Geoscience and Remote Sensing Letters*, <https://doi.org/10.1109/LGRS.2021.3067727>, 2021.

Referee 2:

«Are you applying an elevation mask to minimize the multipath?

Did you project the scintillation indices to the vertical to minimize the geometrical effects as suggested by Spogli et al. (2013)»

Answer:

We did not apply an elevation mask to minimize the multipath. We did not project the scintillation indices to the vertical to minimize the geometrical effects.

We use the data from the same GPS receiver on Svalbard that was used in papers published before. So we apply the same data processing in order to be able to compare our results with results in other papers published in rating journals.

- Clausen L. B. N., Moen J. I., Hosokawa K., Holmes J. M.: GPS scintillations in the high latitudes during periods of dayside and nightside reconnection, *J. Geophys. Res.*, 121, 3293–3309, <https://doi.org/10.1002/2015JA022199>, 2016.
- Jin Y., Moen J. I., and Miloch W. J.: On the collocation of the cusp aurora and the GPS phase scintillation: A statistical study, *J. Geophys. Res.*, 120, 9176–9191, <https://doi.org/10.1002/2015JA021449>, 2015.
- Jin Y., Moen J. I., Miloch W. J., Clausen L. B. N., and Oksavik K.: Statistical study of the GNSS phase scintillation associated with two types of auroral blobs, *J. Geophys. Res.*, 121, 4679–4697, <https://doi.org/10.1002/2016JA022613>, 2016.
- Jin Yaqi, Zhou Xiaoyan, Moen Jøran I., Hairston Marc. The auroral ionosphere TEC response to an interplanetary shock // *Geophysical Research Letters*, Vol. 43, Issue 5, pp. 1810-1818. <https://doi.org/10.1002/2016GL067766>. 2016.
- Jin Y., Moen J. I., Oksavik K., Spicher A., Clausen L. B.N., Miloch W. J. GPS scintillations associated with cusp dynamics and polar cap patches: *J. Space Weather Space Clim.*, 7, A23. <https://doi.org/10.1051/swsc/2017022>, 2017.
- Jin Y., Oksavik K. GPS scintillations and losses of signal lock at high latitudes during the 2015 St. Patrick's Day storm, *J. Geophys. Res.*, 123, 7943–7957, <https://doi.org/10.1029/2018JA025933>, 2018.
- Jin Y., Moen J.I., Spicher A., Oksavik K., Miloch W. J., Clausen L. B. N., et al. Simultaneous rocket and scintillation observations of plasma irregularities associated with a reversed flow event in the cusp ionosphere, *Journal of Geophysical Research*, 124, 7098–7111. <https://doi.org/10.1029/2019JA026942>. 2019.

- Chernyshov A.A., Miloch W.J., Jin Y., Zakharov V.I. Relationship between TEC jumps and auroral substorm in the high-latitude ionosphere, Scientific Reports. 10:6363. <https://doi.org/10.1038/s41598-020-63422-9>. 2020.

Referee 2:

Line 45: "...in the magnetosphere tail and then **released** into the auroral ionosphere"

Answer:

It is corrected (Line 61)

Referee 2:

Lines 51-52: "At polar latitudes polar cap patches **can** produce severe ionosphere disturbances."

Answer:

It is corrected (Line 69).

Referee 2:

Lines 195-196: Reword the sentence "It was also analyzed the influence of GPS signals scintillations the polar cap patches propagating on the dayside".

Answer:

It is corrected (Line 241-242):

«It was also analyzed the influence of polar cap patches which was observed on the dayside on GPS signals scintillations».

Referee 2:

Lines 243-244: "Possibly low values of amplitude scintillations at high latitudes are caused by the low elevation angles of GPS satellites at these regions."

The issue is the opposite! When the elevation is low the S4 could be higher because of the contributions from longer path from the transmitter to the receiver.

Answer:

This is hypothesis. The plasma irregularities producing high-latitudes scintillations mainly formed along the geomagnetic field. At polar latitudes (near Svalbard) the geomagnetic field is close to vertical. So radiowave beam of GPS satellite penetrate through the ionosphere not along geomagnetic field. If we will have satellite with higher inclination angle the amplitude scintillation possibly can be detected. But this hypothesis needs to be tested.