

Planetary Radar Science Case for EISCAT 3D

Torbjørn Tveito¹, Juha Vierinen¹, Björn Gustavsson¹, and Viswanathan Lakshmi Narayanan¹

¹University of Tromsø, The Arctic University of Norway, Postboks 6050 Langnes, 9037 Tromsø, Norway

Correspondence: Torbjørn Tveito (torbjorn.tveito@uit.no)

Abstract. Ground-based inverse synthetic aperture radar is a tool that can provide insights into the early history and formative processes of planetary bodies in the inner Solar System. This information is gathered by measuring the scattering matrix of the target body, providing composite information about the physical structure and chemical makeup of its surface and subsurface down to the penetration depth of the radio wave. This work describes the technical capabilities of the upcoming 233 MHz EISCAT 3D radar facility for measuring planetary surfaces. Estimates of the achievable signal-to-noise ratios for terrestrial target bodies are provided. While Venus and Mars can possibly be detected, only the Moon is found to have sufficient signal-to-noise ratio to allow high resolution mapping to be performed. The performance of the EISCAT 3D antenna layout is evaluated for interferometric range-Doppler disambiguation and it is found to be well suited for this task, providing up to 20 dB of separation between Doppler north and south hemispheres in our case study. The low frequency used by EISCAT 3D is more affected by the ionosphere than higher frequency radars. The magnitude of the Doppler broadening due to ionospheric propagation effects associated with traveling ionospheric disturbances has been estimated. The effect is found to be significant, but not severe enough to prevent high resolution imaging. A survey of Lunar observing opportunities between 2022 and 2040 are evaluated by investigating the path of the sub-radar point when the Moon is above the local radar horizon. During this time, a good variety of look directions and Doppler equator directions are found, with observations opportunities available for approximately ten days every lunar month. EISCAT 3D will be able to provide new high quality polarimetric scattering map of the near-side of the Moon with a previously unused wavelength of 1.3 m, which provides a good compromise between radio wave penetration depth and Doppler resolution.

1 Introduction

Ground based radio remote sensing of planetary surfaces is a remote sensing technique wherein a planetary target is illuminated by a radar transmitter on the surface of Earth. This is a tool that can provide insights into the formative processes of the surfaces of the inner planets, as well as the conditions in the early history of the Solar System (Ostro, 1993; Campbell, 2016). Radar mapping of planetary surfaces provides information about the properties of the upper layers of the planet's surface, and can also provide accurate information about an object's rotation (Campbell et al., 2019). Actively transmitting the radio wave allows researchers to control the frequency, amplitude, and polarization of the illuminating beam. This means that we can extract information about the surface from the ways it affects these parameters. Remote sensing techniques are often an inexpensive, less resource intensive alternative to in-situ measurements to obtain information about large swathes of planetary surfaces.

It is impossible to summarize here all of the scientific highlights of previous planetary radar research. However, we have tried to list topics that may be of interest to study using EISCAT 3D. Previous lunar radio remote sensing studies have been used to determine the average roughness of the lunar surface on several length scales, as well as investigate the geology of the upper crust of the lunar nearside (Evans and Hagfors, 1968). Radar studies of planetary targets in the Solar System have been used to look for water ice in permanently shadowed craters (Campbell, 2016). These craters tend to be near the poles, where the crater rims shields the interior from sunlight. Spudis et al. (2013), using the Mini-RF instrument onboard the Lunar Reconnaissance Orbiter, found evidence of such water deposits near the lunar poles. Radar-bright features consistent with water ice have been found on Mercury's permanently shadowed polar craters (Harmon et al., 2011) using only the Arecibo radar. Radar studies have also been used to map the surface of Venus through its visually-opaque clouds, as well as determine its retrograde rotation (Goldstein and Carpenter, 1963). These maps revealed a surface dominated by volcanism, with a large amount of shield volcanoes and relatively few craters. This suggested that the planet was geologically active relatively recently, and may still be (Phillips et al., 1992). A continuing radar campaign aimed at looking for changes in the Venusian landscape could give information regarding the temporal and spatial scale of geologic activity (Shalygin et al., 2012).

The use of many different wavelengths to investigate planetary surfaces is important in order to build a more complete understanding of the properties of the target body (Thompson, 1979). This is because the radio wave is modified by spatial variations in the dielectric constant of the medium it interacts with. These variations can be caused by both structural and compositional variations in the medium. Specular scattering is dominated by smooth surfaces oriented normally to the radar line of sight. Structural variations on the order of 10% to 100% of the wavelength contribute the majority of the depolarized component of the reflected signal. Simultaneously, the wave will attenuate when it penetrates the target body. The penetration depth is the point where the power of the wave is reduced to e^{-1} , and is roughly proportional to the wavelength used to investigate (Campbell, 2002). These two effects, in tandem, mean that different wavelengths provide different, complimentary slices of information. Another parameter that is affected by the frequency of the illuminating wave is the Doppler resolution achievable. Longer wavelengths are not able to obtain as fine a resolution as shorter wavelengths if observation times are the same.

There are several different types of ground-based radar remote sensing experiments of planetary targets. Range-Doppler mapping of radio albedo can provide information about the structural and dielectric properties of the surface of the body being observed. If polarimetric information is available, the near subsurface can be partially separated from the surface echo, providing more information about the subsurface structure and chemical composition. If several receivers are available, topographical mapping is possible by using the phase difference between the received signals to calculate differences in optical path-length (Margot et al., 2000). This type of interferometric calculation can also be used to resolve ambiguities in range-Doppler mapping caused by target geometries (Rogers and Ingalls, 1969). Radar measurements can also be used to ascertain the distance to an object, and its relative velocity. Repeated measurements can then help constrain the orbital characteristics of Near Earth Objects (NEOs), identifying potentially hazardous space objects (Giorgini et al., 2008). Radar observations of Asteroids can also aid in determining their spin state through investigating Doppler spectra or radar speckle patterns (Busch et al., 2010). A

detailed analysis of the capabilities of EISCAT 3D in relation to observation of NEOs has been done in a companion paper by Kastinen et al. (2020).

Previous long-wavelength ground based inverse synthetic aperture radar maps of the lunar surface include a map of backscatter at 40 MHz (7.5 m) by Thompson (1978). This observation provided the first high-resolution map of the lunar nearside for
65 long-wavelength radar, as well as a measurement of the average scattering properties of the lunar regolith at long wavelengths. A recent study by Vierinen et al. (2017b) provided a view of the lunar nearside at 6 meters, where both the specular and orthogonal-to-specular polarizations were recorded. This gives a view of the properties of both the surface and subsurface. The long wavelength studies have identified two regions, 1) the Schiller-Zucchius basin and 2) the highlands around Montes Jura, which have anomalously low depolarized radar returns (Thompson et al., 2006; Vierinen et al., 2017b). The use of 230 MHz
70 radar maps would be of interest in order to constrain the physical mechanism that causes this reduced return.

In this paper, we discuss the upcoming EISCAT 3D radar facility and its capabilities in the context of planetary radar studies. In section 2, we describe the performance parameters of the radar. Section 3 investigates the detectability of Mars, Venus and Mercury, as well as the Moon. In section 4, we discuss an interferometric technique for disambiguating Doppler North and South from one another, and estimate the achievable contrast obtainable using the EISCAT 3D interferometer. In Section 5, we
75 investigate how severely ionospheric radio propagation will degrade the Doppler resolution radar maps. This is done using a first order model for traveling ionospheric disturbances. Section 6 outlines Lunar observing opportunities between 2022 and 2040 using EISCAT 3D.

2 EISCAT 3D

EISCAT 3D is a new multi-static high power large aperture phased array radar, scheduled for first-light experiments in 2022.
80 The facility is currently being built in northern Fennoscandia, with the transmitter located in Skibotn, Norway, as can be seen in figure 1. The primary science case for this new facility is ionospheric and upper atmospheric physics (McCrea et al., 2015). However, this radar will also potentially be very useful for planetary radar studies.

The radar facility will be able to transmit and receive signals at elevations down to 30° above the horizon. This will allow both a view of the ecliptic plane and lunar observations of several hours. The facility will operate with a 233 MHz center
85 frequency, a 5 MHz transmit bandwidth, a 30 MHz receive bandwidth (Vierinen et al., 2017a), a system noise temperature of 150 K, a peak transmit power of 5 MW, and a maximum duty-cycle of 25% (Kero et al., 2019). The main antenna arrays have a maximal diameter of 75 m, and a maximal gain, G_0 , of 43 dB towards zenith. The decline in gain as a function of angle of incidence can be approximated as the reduction in projected area, $G = G_0 \cos \theta$. The radar allows independent transmit and receive on two orthogonal linear polarizations. As a consequence of this, any polarization state vector can be synthesized. The
90 wavelength has not, to our knowledge, been used previously for lunar studies. This means that the radar will be able to sample a new scale-size in lunar surface roughness and subsurface structure.

Another benefit of the EISCAT 3D facility is the availability of numerous interferometric baselines, with distances over 100 km possible. See figure 1 for the planned configuration of antenna placement. The Skibotn antenna location will have

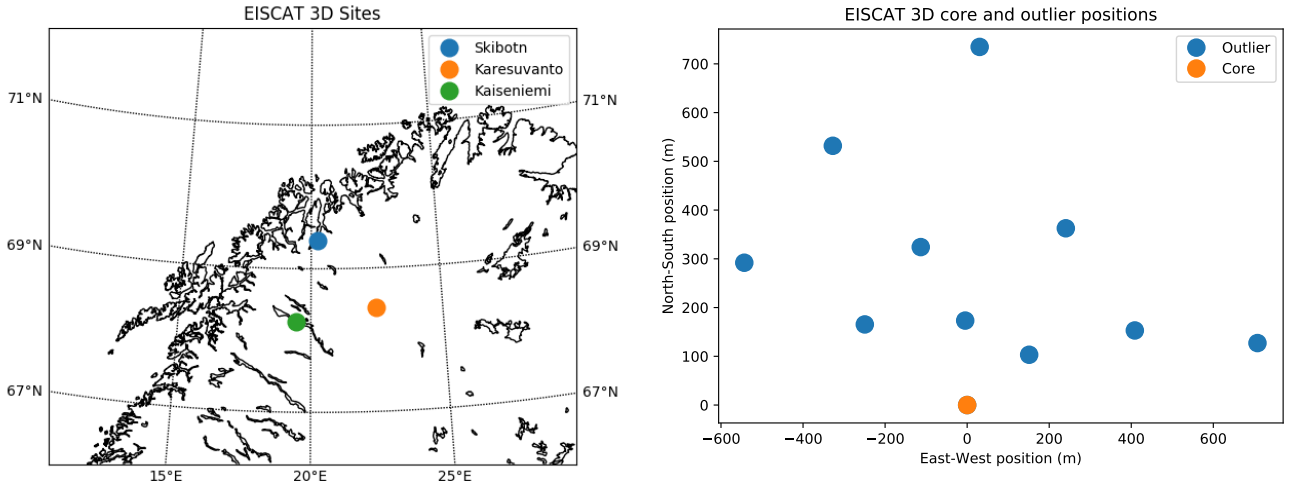


Figure 1. Left: Locations of the three receiver sites of EISCAT 3D. The Skibotn site has both transmitting and receiving capabilities, while the Kaiseniemi and Karesuvanto are only able to receive. Right: planned distribution of antenna modules at the Skibotn site. Note that only the Skibotn site is planned to have outlier antenna modules intended for interferometric purposes.

ten outlier antenna modules, each with a maximal diameter of approximately 7.9 m consisting of 91 dipole antenna elements. While these additional antenna modules don't provide as high a signal-to-noise ratio, they can be useful in providing a large number of interferometric baselines. In total, when using all three receiving sites and the Skibotn outlier antennae, one can create 78 unique antenna pairs.

The relatively low elevation angle of the lunar face presents three challenges for radar imaging. 1) The antenna gain pattern will be elongated in the elevation direction. This will cause a loss of signal strength. 2) The elevation pointing direction will also cause a polarization dependent phase and amplitude response for the antenna. This will require careful calibration. 3) The point spread function of the interferometer will also be affected.

Of these effects, the polarization dependent antenna response is probably most important. This will most likely require the community to develop an azimuth and elevation dependent polarization response model for the EISCAT 3D antenna.

3 Detectability of planetary bodies

In this section, we evaluate the signal-to-noise ratios (SNRs) of planetary bodies when observed by EISCAT 3D. The signal-to-noise ratio ρ is found as:

$$\rho = \frac{1}{4^{\frac{9}{2}} \pi^{\frac{7}{2}} k} \frac{P_{TX} \gamma G^2 \lambda^{\frac{5}{2}} \hat{\sigma} d^{\frac{3}{2}} \tau_s^{\frac{1}{2}}}{T_{sys}} \frac{1}{R^4} \tau_m^{\frac{1}{2}} \quad (1)$$

The first term is a constant, the second term describes the specifics of the radar system, the third term are target-specific factors, and the last term is the square root of the observation time. The expression for the signal-to-noise ratio for a planetary target is

Table 1. Achievable SNR for hour-long observations of the terrestrial planets and the Moon. The date where the target has the best signal to noise ratio is shown, along with the Doppler width and approximate distance during the observation period.

Target	SNR/hour	Minimum distance (m)	Doppler width (Hz)	Date (UTC)
The Moon	108 dB	$0.363 \cdot 10^9$	3.2	2022-Oct-10 23:00
Venus	28 dB	$4 \cdot 10^{10}$	3.2	2025-Mar-19 11:00
Mars	14 dB	$6 \cdot 10^{10}$	736	2022-Dec-01 00:00
Mercury	1 dB	$8 \cdot 10^{10}$	10.2	2028-Jun-02 08:00

110 given by Ostro (1993). These expressions are also derived and discussed in a companion paper by Kastinen et al. (2020), in the context of detectability of Near-Earth Objects using the EISCAT 3D facility.

Table 1 lists the highest SNR observing opportunities for the three other terrestrial planets and the Moon during the period 2022-2032. The table lists the date of observation, SNR, estimated Doppler width, and range to the center of the target body. We used the NASA HORIZON ephemeris (Giorgini et al., 2001) to find the elevation angle to each planetary body once per
 115 hour over the time period, and evaluated the closest pass for each body that was above the 30° cut-off elevation. We then calculated the SNR using the expression found in Ostro (1993); Kastinen et al. (2020), with a 25% duty cycle and assuming a 0.1 radar albedo. While it is customary to report SNR obtained during the time it takes for the radar signal to make a round-trip to the target and back, we have used SNR/hour, as the 25% duty-cycle allows for interleaved transmit and receive.

It is obvious from table 1 that only the Moon is a viable radar target. The other terrestrial planets are simply too faint for
 120 scientific mapping purposes. While Venus and Mars may be detectable, they cannot be used to produce a range-Doppler radar image with a sufficient number of pixels.

Target selection is limited by the achievable SNR. Due to the R^{-4} dependence of the returned signal, distant objects quickly become lost in noise. In order to compensate for the low signal of distant objects, one can increase the effective collecting area of the radar receiver. It would therefore be possible that future expansions of the EISCAT 3D facility allows the study of more
 125 distant objects. In order to make a meaningful difference, the product of transmit power, gain, and receiver aperture would need to be increased by several orders of magnitude. Such an expansion may prove to be challenging in practice.

The small solar elongation angle to Mercury and Venus will probably increase the receiver noise significantly, as the Sun will often be relatively close to the radar antenna beam axis. Therefore, the SNR for Mercury and Venus are probably overestimated.

While the SNR calculations indicate that it may be possible to detect Venus, Mars, and Mercury with the E3D, they are not
 130 mappable radar targets. Assuming Venus has an SNR of 28 dB, this will only produce a radar map with approximately 8×8 pixels with an SNR of 10 dB per pixel. While it is possible to increase the SNR through increasing total integration time, this increase is approximately linear. The total amount of time required to obtain useful resolutions is so high as to not be worth attempting.

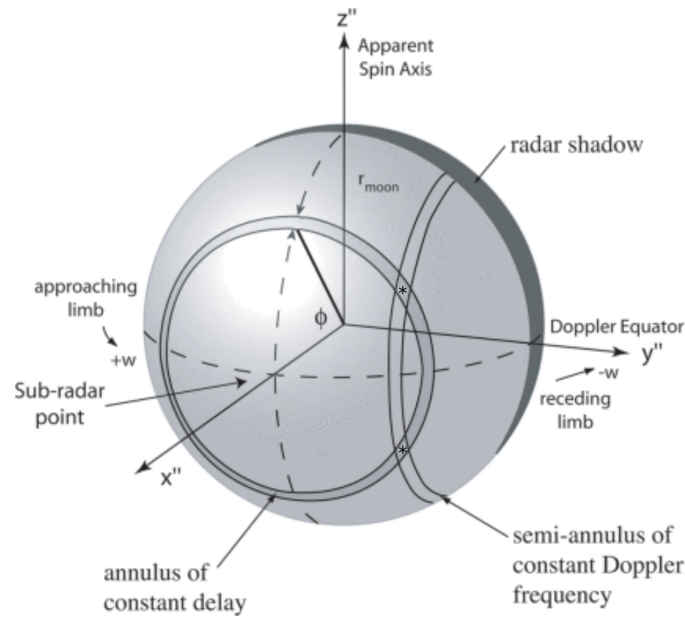


Figure 2. In this figure, the geometry of range-Doppler mapping is shown. Each range pixel takes the form of a ring on the surface of the Moon, centered on the sub-radar point. Each frequency bin takes the form of a ring, centered on the equator, 90 degrees east and west of the sub-radar point. Marked with a star are two regions that will have the same range and Doppler dimensions, symmetrical about the Doppler equator. These regions are indistinguishable with only range and Doppler information, and every point on the apparent north hemisphere will have a point on the south hemisphere with identical range and Doppler coordinates. Figure adapted from Campbell et al. (2007)

4 Range-Doppler disambiguation

135 The range-Doppler ambiguity can be seen in figure 2. Every point on the northern (positive Z'' -direction) hemisphere is identifiable by one ring of constant range and one ring of constant Doppler shift. These rings also intersect on the southern hemisphere, assuming that the target is spherical. This means that any range-Doppler coordinate pair points to two physical locations, one north of the apparent Doppler equator, and one to the south. Untreated range-Doppler maps therefore appear to fold along the equator, adding together the regions on both hemispheres that have the same range and Doppler values. This folding makes it
 140 challenging to extract useful information from the maps.

The range-Doppler north-south ambiguity can be removed by an interferometric technique described by Rogers and Ingalls (1969). This method relies on using the phase difference between two receiving antennae to discriminate between echoes from the ambiguous points. While Rogers and Ingalls originally used only one interferometric antenna pair, the method can be expanded to an arbitrary number of unique pairs. The addition of more antennae with different interferometric baselines makes
 145 the inverse problem of separating Doppler North from Doppler South more overdetermined. Discussing the interferometry in detail is out of the scope of this paper. We refer you to a companion paper by Stamm et al. (2020) for a discussion on the

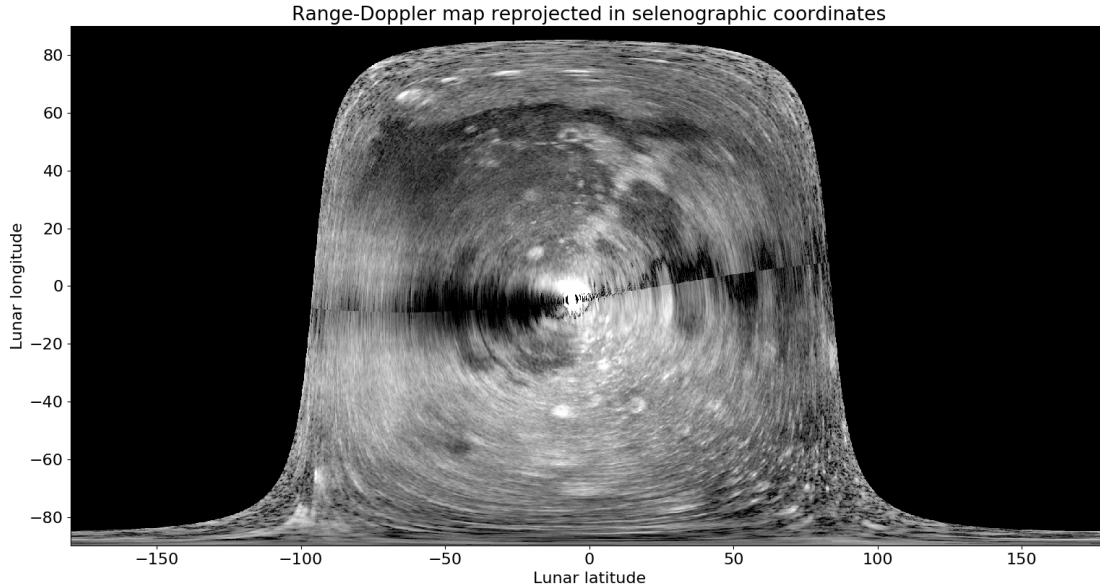


Figure 3. Due to uncertainties in the disambiguation calculation, a band surrounding the Doppler equator is poorly resolved. Note that the map is re-projected from range and Doppler coordinates to selenographic coordinates. Near the Doppler equator, features become lost in noise due to the noise-enhancing effects of poor disambiguation. This figure is produced from the same data as Vierinen et al. (2017b)

interferometric imaging capabilities of EISCAT 3D. Disambiguation by selectively illuminating only one hemisphere at a time is not viable due to the beamwidth being significantly larger than the angular extent of the Moon.

When using a two antenna interferometer to disambiguate the Doppler North and South, there is a region near the Doppler equator where the angular separation between the Doppler North and South region is very small. As the phase difference approaches zero near the Doppler equator, there will be a region surrounding it where the north-south ambiguity is unresolvable. The width of this gap to first order is inversely proportional to the separation of the antennas. An example of such a band is shown in figure 3. This map is made by Vierinen et al. (2017b) using data gathered by the Jicamarca radar facility, using a single interferometric antenna pair.

Due to the increased number of elements in the EISCAT 3D interferometer, as well as the availability of extremely long baselines, this ambiguous band will be significantly smaller. In combination with the regular and frequent observation opportunities, this means that EISCAT 3D could map the reflectivity of the low-latitude, low-longitude region of the lunar nearside.

The data for the 2017 study by Vierinen et al. was collected with the Jicamarca radio observatory using the northernmost and southernmost modules, giving a baseline of 424 m. There are 64 modules, with side lengths of approximately 40 m each. With a 6m wavelength, this gives an approximate gain of 27.5 dB at normal incidence. The EISCAT 3D outlier antennae

are hexagonal with a maximal diameter of approximately 7.9 m with a wavelength of 1.3 m. We will assume that this also gives a gain of 27.5 dB at normal incidence. Due to the improved steering of the EISCAT facility over Jicamarca, targets are viewable at 30 degrees elevation from the horizon. This reduces the effective collecting area of the antenna, but also increases the possible observation time.

165 Interhemispheric cross-talk is the power from one hemisphere that is incorrectly measured as coming from the other hemisphere. In order to estimate this for EISCAT 3D, we will be using the set of equations provided by Vierinen et al. (2017b), appendix 1. We will assume that the power only originates from one hemisphere, such that $p_n = 0$ and $p_s = 1$, meaning that all of the power measured is originating from the southern hemisphere. The estimate of interhemispheric cross-talk then becomes:

$$170 \quad \mu = \frac{\sigma_n}{p_s} \tag{2}$$

Where σ_n is the a posteriori standard deviation of the measured power from the northern hemisphere and μ is our estimate of interhemispheric cross-talk. A higher value for μ would mean that a larger amount of the power estimated to be originating from the northern hemisphere is actually from the southern hemisphere.

The reduction in gain at 30 degrees elevation is proportional to the reduction in projected area, leaving the total gain at 175 approximately 24 dB, which should be more than sufficient for lunar observations. As the outlier antennae have sufficient gain to act as interferometers, there are a total of 78 possible unique baselines. For our lunar calculations, we have assumed that the Doppler axis is aligned with Earth's, and excluded any baseline less than 50 m in the north-south direction to shorten calculation time.

In figure 4, we have evaluated the interferometric performance for EISCAT 3D and Jicamarca as a function of lunar latitude. 180 The interferometric performance is measured with interhemispheric cross-talk μ , which is given in equation 2. From the figure, we can see that the EISCAT 3D achieves an interhemispheric cross-talk of approximately -20 dB. As a point of comparison, the Jicamarca Radio Observatory only attains -12 dB. This means that it is comparatively easier to distinguish between points on the northern and southern hemispheres. This is due to the significantly larger number of interferometer baselines available with EISCAT 3D, making the linear regression problem of separating the Doppler North and South a highly overdetermined 185 problem. In the calculation of interhemispheric cross-talk, we have assumed that both EISCAT 3D and Jicamarca make 81 independent power measurements, as was done in the previous Jicamarca study (Vierinen et al., 2017b).

Therefore, as a consequence of the diversity of interferometer baselines, the ambiguous band will be significantly thinner with the EISCAT 3D radar than with the previous Jicamarca observation, allowing us to see regions quite near to the apparent equator. If observations are conducted some time apart, it is possible to sample the lunar surface with different sub-radar points 190 and apparent equators. If the apparent lunar rotation is in a different direction in two different maps, the unresolved band about the Doppler equator will fall in different regions of the Moon. The same is also true for maps with different sub-radar points. This means that if one is attempting to create a map with total coverage of the lunar nearside, a thin unresolved region means that fewer unique looks are required.

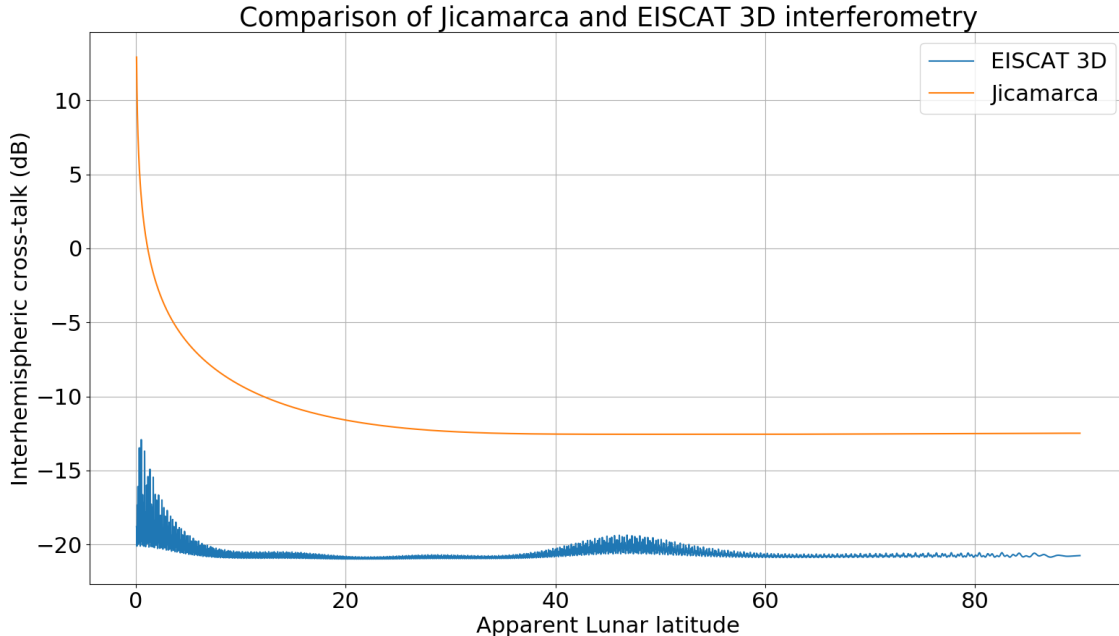


Figure 4. A comparison of interhemispheric crosstalk (equation 2) between the configuration used by Vierinen et al. (2017b) using the Jicamarca radio observatory and the EISCAT 3D facility using every unique interferometric baseline larger than 50 m. The apparent lunar latitude is terminated at approximately 0.05 degrees. Note that the estimate for EISCAT 3D is lower at all points than what is estimated for Jicamarca, which suggests that even regions close to the Doppler equator should be possible to disambiguate with the interferometric capabilities of EISCAT 3D.

5 Ionospheric effects

195 The relatively long wavelength used by EISCAT 3D also provides a challenge in that it is affected more than shorter wave-
lengths by the Earth’s ionosphere. Spatial variations in the plasma density causes spatial variations in the refractive index.
The refractive index is found from the Appleton-Hartree equation which, for an unmagnetised, collisionless plasma, can be
simplified to:

$$n^2 = 1 - \frac{f_p^2}{f^2}, \quad (3)$$

200 where n is the refractive index, f_p is the plasma frequency, and f is the frequency of the electromagnetic wave. In our case,
the radar frequency is 233 MHz, and typical ionospheric plasma frequencies will be between 1 – 10 MHz. We can simplify the
analysis by assuming a collisionless plasma since the majority of the electron density variations will be in the F-region where
the electron collision frequency is negligible. The radar frequency is also sufficiently high that increased D-region electron
density will not cause a significant fraction of the radio wave to be absorbed. Further, we can ignore the effects of the magnetic

205 field because we can use circularly polarized transmissions. As the radar will be capable of transmitting and receiving two linearly independent polarizations, it will be possible to synthesize any polarization state. In this case, the signal transmitted by the radar can be seen approximately as one of the two characteristic ionospheric propagation modes throughout the path from the radar to the Moon, which means that birefringent radio propagation effects do not play a major role.

Faraday rotation can be estimated from the signal reflected from the area surrounding the sub-radar point. This area can
210 be approximated as a flat plane oriented normally to the signal propagation direction. As such, the reflected signal will be dominated by specular scattering, but it will include two-way Faraday rotation. The Faraday rotation will be approximately constant over the lunar face. Subsurface scattering will be diffuse, and can therefore be identified by exclusively looking for the polarization which is perpendicular to the one expected for specular scattering.

Irregularities in the electron density of the ionosphere are relatively common. As a consequence of electron density varia-
215 tions, signals traveling through the ionosphere will have small differences in phase due to variations of the optical path length. This means that features which should be sharp in the range-Doppler map become blurred in the Doppler dimension. This effect can be partially counteracted with background knowledge of target features or knowledge of the ionospheric electron content. If there is a feature that is known to be a sharp and point-like (e.g. a crater rim smaller than the resolution cell or the sub-radar point), one can use this fact to estimate the effect of the phase modulation, and remove or reduce its effect, as was
220 done in the Jicamarca study (Vierinen et al., 2017b).

Traveling Ionospheric Disturbances (TIDs) are wave-like features propagating in the ionosphere bringing enhancements and reductions to the background electron density. These disturbances can be caused by gravity waves propagating in the neutral thermosphere. TIDs are usually transverse waves, propagating perpendicular to their phase fronts (Shiokawa et al., 2013). The phase plane can be aligned vertically or tilted. They tend to have long wavelengths, down to approximately one
225 hundred kilometers in the spatial scale and 15 minutes in the temporal scale. The buoyancy period at ionospheric heights is approximately 9 minutes and hence non-evanescent gravity wave driven TIDs with considerable amplitudes will have a period larger than or equal to this. The amplitude of TIDs can vary from 0-15% (Bolmgren et al., 2020). Over Northern Scandinavia, it is found that the TIDs occur predominantly during pre-midnight hours 18 - 24 LT and their occurrence is scarce during post-midnight hours 0 - 6 LT (Shiokawa et al., 2013).

230 The variability of the electron density alters the observed signal most severely if the radar look direction is parallel to the TID wave vector. The right hand side of Figure 5 depicts this case. Then the variation of the total electron content along the beam path will be higher than if the signal propagates through multiple TID undulations, as shown on the left hand side of the same Figure.

In order to estimate the effect of TIDs for inverse synthetic aperture radar measurements, we have used a simple toy model
235 for a monochromatic TID. Our electron density model is based on a background electron density profile $N_0(z)$, on top of which a TID is overlaid. In this case, the electron density in the x - z plane is given by the following equation:

$$N_e = [1 + \alpha \cos(k_z z + k_x x - 2\pi f_{TID} t)] N_0(z). \quad (4)$$

Here k_x and k_z are the horizontal and vertical wavenumbers of the TID, and f_{TID} is the temporal frequency of the TID. The parameter α determines the amplitude of the fluctuating component of the electron density. Variables x , z , and t denote the horizontal, vertical, and temporal dimensions.

The ionospheric contribution to the phase (in radians) of a radio signal of frequency f_{rad} travelling through a plasma can be written as (Davies, 1965; Vierinen, 2011):

$$\phi = \frac{e^2}{2\pi\epsilon_0 m_e c f_{\text{rad}}} \int_L N_e d\ell \quad (5)$$

here L is the path of the signal, e is the charge of an electron, ϵ_0 is the permittivity of free space, m_e is the electron rest mass, c is the speed of light in vacuum, f_{rad} is the frequency of the radio wave, and N_e is the electron density. Note that we have assumed a round-trip propagation of the radio wave.

By combining equations 4 and 5, we get an explicit expression for the TID effect on the phase of the received signal:

$$\phi(t) = \frac{e^2}{2\pi\epsilon_0 m_e c f_{\text{rad}}} \int_L N_0(\ell_z) [1 + \alpha \cos(k_z \ell_z + k_x \ell_x - 2\pi f_{TID} t)] d\ell \quad (6)$$

The x and z components of the path evaluated in the integral are given by ℓ_x and ℓ_z .

By differentiating equation 6 with respect to time, we get the frequency shift (Doppler shift due to time-variable ionospheric radio propagation) of the signal:

$$\frac{d\phi(t)}{dt} = \frac{e^2 \alpha f_{TID}}{\epsilon_0 m_e c f_{\text{rad}}} \int_L N_e(\ell_z) \sin(k_x \ell_x + k_z \ell_z - 2\pi f_{TID} t) d\ell \quad (7)$$

where α is the TID electron density enhancement magnitude, f_{TID} is the frequency of the TID in hertz, k is the wavenumber of the TID, f_{rad} is the frequency of the radar in hertz, ℓ is a vector element along the path L .

This equation provides the round-trip rate of change of phase as a function of time due to electron density variations in both space and time, in units of radians per second. We evaluate this over an hour and obtain the minimum and maximum Doppler shift due to ionospheric radio propagation. We will call this effect ionospheric Doppler broadening.

In order to evaluate ionospheric blurring of inverse synthetic aperture radar images, we have evaluated different relative look angles between the TID phase front and the radio wave propagation direction. Angles between 0° and 90° with 15° were considered. Figure 5 shows the fluctuating component of the electron density associated with the TID model for different look angles. The left panel of figure 5 shows the best-case scenario, where the radar look direction is perpendicular to the phase front (90°), and the right panel shows the worst-case scenario, where they are parallel (0°). We have chosen to use an elevation angle of 45° for all cases, as this is close to the value of the highest elevation angle that the Moon can be observed using the EISCAT 3D radar. For the model calculations, we used TIDs with a wavelength of 200 km with a period of 10 minutes. The amplitudes are varied from 1% to 10% ($\alpha = 0.01$ to $\alpha = 0.1$). For all model calculations, we have assumed a night time electron density profile $N_0(z)$ based in the International Reference Ionosphere (Bilitza, 2001). We have scaled this electron density profile by a constant value in order to obtain a certain vertical total electron content:

$$\text{TEC} = \int_L N_e d\ell, \quad (8)$$

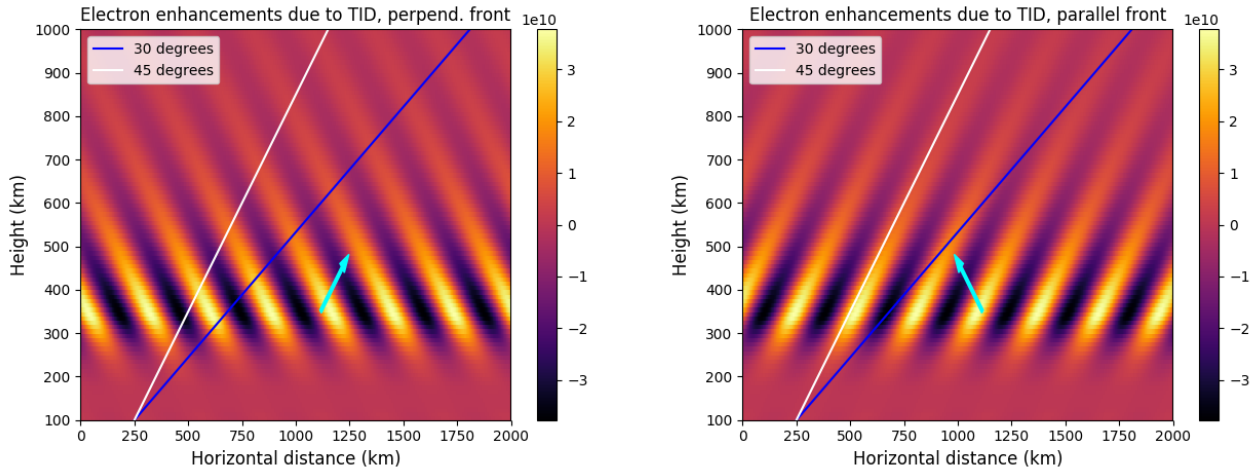


Figure 5. Model of electron enhancements due to TIDs. *Left:* The TID phase front has been tilted 45 degrees to the left. Radar look directions for 45 and 30 degrees above the horizon is shown. *Right:* the same as the plot on the left, but with the TID phase front tilted 45 degrees right. Both are in units of electrons per cubic meter. TID wave vector displayed as a cyan arrow.

Table 2. Effect of TIDs on Doppler broadening under various conditions.

α	TECU	Doppler broadening	% of lunar Doppler width
0.01	10	0.03 Hz	1%
0.05	10	0.10 Hz	3%
0.1	10	0.34 Hz	11%
0.01	40	0.14 Hz	4%
0.05	40	0.69 Hz	21%
0.1	40	1.38 Hz	43%

where L is a vertical path through the ionosphere. We have evaluated the model for vertical TEC of 10 and 40 with units of
 270 10^{16} electrons per square meter (TECu), corresponding to a low and high ionospheric electron density.

We find that the Doppler broadening depends on: 1) the amplitude of TEC enhancement, 2) the background TEC value, and 3) the relative look angle. This is expected since the a relative modulation will have a larger effect on the absolute total variation when the background density is higher. With larger look angles, the effect of ionospheric electron density fluctuations average out more and result in smaller ionospheric phase variations.

275 In table 2, we have compiled estimates of the ionospheric Doppler broadening caused by a TID where the radar look direction is in the phase plane, which corresponds to the worst case scenario (look angle 0°). We have assumed a Lunar Doppler width of 3.2 Hz, which would be a typical Doppler width for observations in 2022. The ionospheric Doppler broadening is approximately linear with both TEC and TID electron enhancement amplitude.

Table 3. Effect of the angle between the phase plane and the radar look direction on Doppler broadening, with $\alpha = 0.1$ and TECU = 40.

Relative look angle (Deg)	Doppler broadening (Hz)	% of lunar Doppler width
0	1.38	43.0%
15	0.56	17.5%
30	0.22	6.8%
45	0.10	3.2%
60	0.06	1.8%
75	0.04	1.2%
90	0.03	0.9%

In table 3 we have compiled estimates of frequency distortions of a two-dimensional plane-wave TID with an electron
280 enhancement of 10% on a background ionosphere of approximately 40 TECU. In this simulation, we have assumed a radar
elevation angle of 45° . In order to evaluate the impact of changes in the angle between the TID phase plane and the radar look
angle, we changed the tilt of the TID phase plane from what is shown in the left panel of figure 5 to the right panel in 15° steps.
We can see that the angle to the phase plane is of critical importance for the effect of the phase disruption. When the signal
travels through multiple waves, the time dependence of the total electron content is drastically reduced.

285 The Doppler broadening effects of TIDs are highly variable, and can go from negligible to almost as large as the rotational
Doppler shift. This effect is largest when the angle between the radar look direction and the TID phase plane becomes small.
These simple model calculations are representative of what can be expected. Further, previous studies of ionospheric TIDs from
Tromsø indicate that conducting the experiment during post midnight hours in geomagnetically quiet periods is preferable in
order to reduce the Doppler broadening effects caused by the ionosphere (Brekke, 2012). Moreover, EISCAT 3D can be used to
290 accurately measure the ionospheric electron density during observations, which can then be used to correct for phase variations
caused by the ionosphere.

6 Future lunar observation opportunities

In order to aid the planning of future Lunar observations with EISCAT 3D, we have compiled the possible observation opportu-
nities of the lunar face from the year 2022 to the year 2040. Observation opportunities are plentiful, but vary significantly from
295 year to year when it comes to the location of the sub-radar point, Doppler width, and the orientation of the Doppler equator.

Figure 6 is a plot of the lunar elevation in ten minute increments in the year 2022, which is when the EISCAT 3D facility
is scheduled for completion. As the facility can steer 60° off zenith, there are several days every month suitable for lunar
observation. Note that each spike consists of several days (~ 10), with observation opportunities several hours long for most
days. The elevation charts of other years are relatively similar. The maximum elevation varies slightly as the orbit of the Moon
300 varies, but this variation does not significantly impact the frequency or duration of observation opportunities.

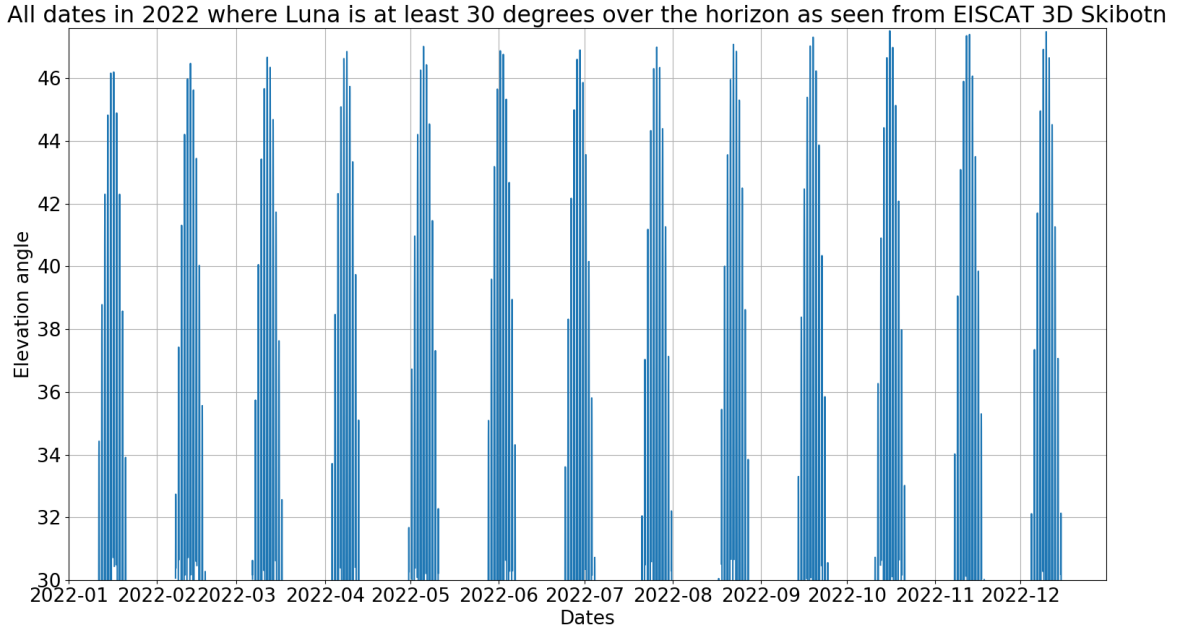


Figure 6. All dates where the lunar face is more than 30 degrees over the horizon during 2022, as viewed from the EISCAT 3D Skibotn site. Note that each spike is a lunar month, and every lunar month has several days where observations are possible.

Figures 7 and 8 further show the sub-radar point in selenographic coordinates from the year 2022 up to year 2040. The line is green when the lunar face is at least 30 degrees over the horizon, as seen from EISCAT 3D in Skibotn. Over this period, the sub-radar point migrates around the origin of the selenographic coordinate system. Due to this migration, the view of the lunar nearside changes as the horizons and rotation direction change. The mid 2020s will provide a view of the lunar south pole, while the mid 2030s will allow us to study the northern regions. As the sub-radar point migrates day-to-day as well as year-to-year, some regions near the lunar limbs are only visible a fraction of the time. Care should then be taken to ensure that interesting regions are observed when they are observable, as opportunities do not repeat often.

The range resolution R_r achievable is found as $R_r = \frac{c}{2B}$, where B is the transmit bandwidth and c is the speed of light. As EISCAT 3D has a transmit bandwidth of 5 MHz, this results in a range resolution along-sight of approximately 30 m. The frequency resolution R_f along the equator is found as $R_f = \frac{\lambda D_m}{2v_{rot} c \tau_m}$, where D_m is the diameter of the Moon, v_{rot} , and τ_m is the observation time in seconds. The apparent rotation velocity of the Moon will change day-to-day, but will be somewhere between 0.5 m/s and 2.0 m/s. For a one-hour observation with an apparent rotation velocity of 1.2 m/s, the average resolution in the Doppler dimension will be 520 m.

The practically achievable resolution will be significantly lower than what is theoretically possible. Much of this reduction comes from efforts to compensate for low SNR and to reduce speckling. Another challenge is that Rogers and Ingalls method of

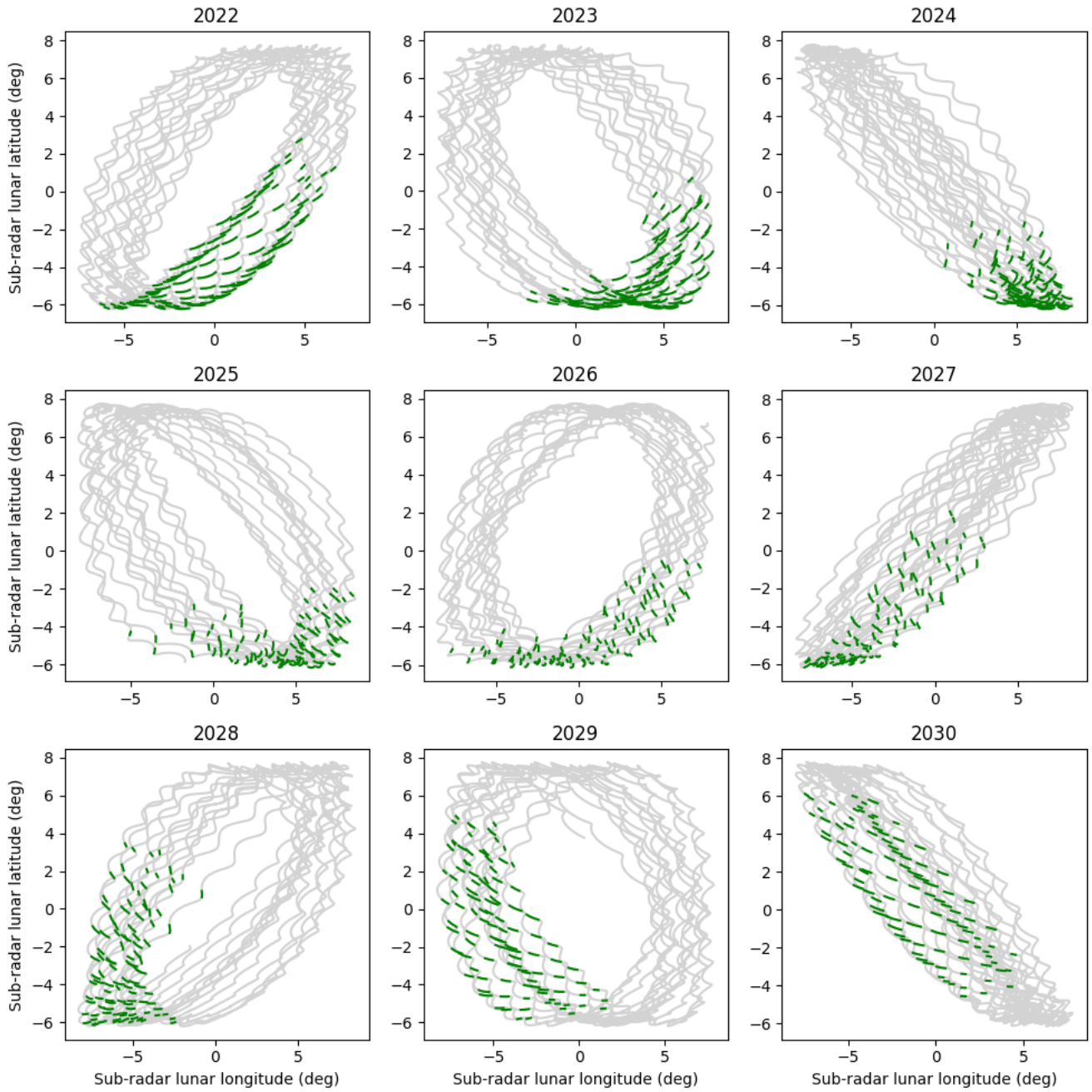


Figure 7. Lunar observation opportunities 2022-2030. The position of the subradar point in selenographic coordinates is shown in light gray. All subradar point positions for which the Moon is above 30° elevation are shown in green. Each year offers a slightly different view of the Moon.

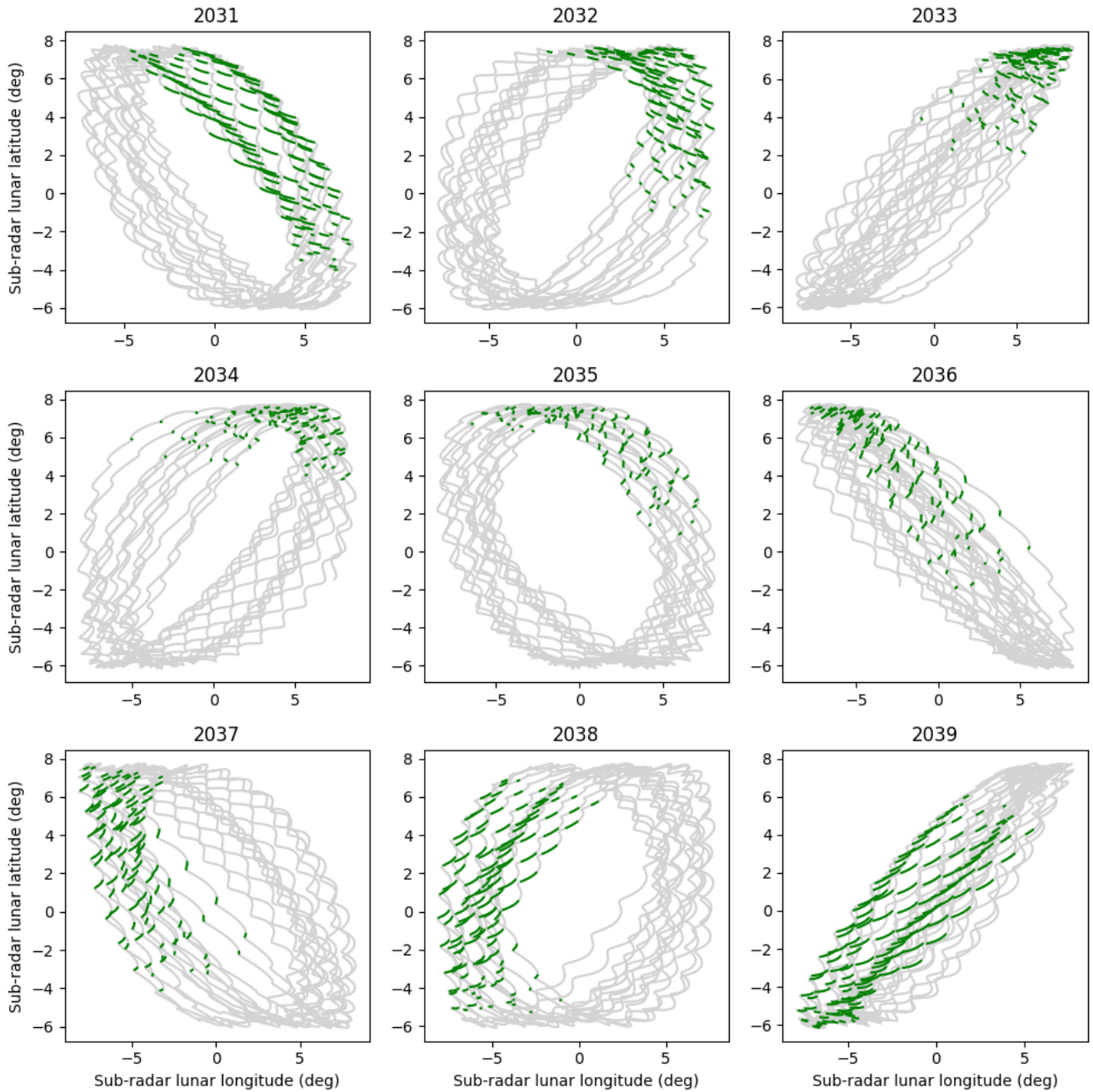


Figure 8. Lunar observation opportunities 2031-2039. This figure is the same as figure 6, but extended further into the 2030s.

north-south disambiguation assumes a stationary Doppler axis. This assumption does not hold for long observations of the lunar face, effectively limiting possible observation times. These effects will be dependent upon the specifics of each observation, and can be expected to vary significantly.

7 Conclusions

320 EISCAT 3D provides an excellent new tool for radar imaging of the lunar nearside. Observation opportunities are plentiful and varied, and the radar can track the lunar face for sufficiently long periods of time to allow high quality observations to be made. The operating frequency of EISCAT 3D is previously unused for lunar mapping purposes, and will therefore provide new information about the scattering properties of the lunar terrain. The interferometric capabilities provided by the large number of receiving antennae are able to resolve the north-south ambiguity, even close to the Doppler equator. This means that it will
325 take fewer unique looks to obtain a full coverage map of the lunar nearside.

The other terrestrial planets are too far away for EISCAT 3D to achieve a scientifically useful resolution due to the low signal strength. This could possibly be rectified by increasing the transmitted power and/or receiver gain function of the facility some time in the future, though this may be unrealistic in practice.

The ability of the radar facility to track moving targets and steer down to 30° elevation allows for many long observation
330 opportunities. This will be useful for mitigating the disrupting effects of ionospheric variability, as experiments can easily be rescheduled. TIDs can be a significant hindrance to obtaining clear radar images, but the most disruptive events should not be very common.

The variability of the lunar sub-radar point and Doppler axis will allow for varied views of the lunar face. Regular observations over the course of several years can provide new views of regions that are occasionally obscured by the lunar horizon.

335 This article provides an expansion of the science case for EISCAT 3D into the realm of planetary radar mapping. While Near-Earth Objects can also fall under the umbrella term of planetary radar, this science case is discussed in detail in the companion paper by Kastinen et al. (2020), which will appear in the same special issue.

Author contributions. Torbjørn Tveito performed numerical calculations for TID simulations, interferometric disambiguation, and ionospheric frequency disturbances. Juha Vierinen performed the compilation of observation opportunities and signal-to-noise ratio calculations
340 of planetary targets. Björn Gustavsson contributed to the calculation for observation opportunities, interferometric disambiguation, and TID simulation. Viswanathan Lakshmi Narayanan contributed to section 5, for both the calculation and interpretation of results. All authors contributed to the writing of the manuscript and the interpretation of results.

Competing interests. Juha Vierinen is on the editorial board of this special issue

Acknowledgements. T. Tveito and J. Vierinen would like to thank the Tromsø Research Foundation for supporting this work.

345 **References**

- Bilitza, D.: International reference ionosphere 2000, *Radio Science*, 36, 261–275, 2001.
- Bolmgren, K., Mitchell, C., Bruno, J., and Bust, G.: Tomographic Imaging of Traveling Ionospheric Disturbances Using GNSS and Geostationary Satellite Observations, *Journal of Geophysical Research: Space Physics*, 125, e2019JA027551, 2020.
- Brekke, A.: *Physics of the upper polar atmosphere*, Springer Science & Business Media, 2012.
- 350 Busch, M. W., Kulkarni, S. R., Brisken, W., Ostro, S. J., Benner, L. A., Giorgini, J. D., and Nolan, M. C.: Determining asteroid spin states using radar speckles, *Icarus*, 209, 535–541, 2010.
- Campbell, B. A.: *Radar remote sensing of planetary surfaces*, Cambridge University Press, 2002.
- Campbell, B. A.: Planetary geology with imaging radar: insights from earth-based lunar studies, 2001–2015, *Publications of the Astronomical Society of the Pacific*, 128, 062001, 2016.
- 355 Campbell, B. A., Campbell, D. B., Margot, J.-L., Ghent, R. R., Nolan, M., Chandler, J., Carter, L. M., and Stacy, N. J.: Focused 70-cm wavelength radar mapping of the Moon, *IEEE transactions on Geoscience and Remote Sensing*, 45, 4032–4042, 2007.
- Campbell, B. A., Campbell, D. B., Carter, L. M., Chandler, J. F., Giorgini, J. D., Margot, J.-L., Morgan, G. A., Nolan, M. C., Perillat, P. J., and Whitten, J. L.: The mean rotation rate of Venus from 29 years of Earth-based radar observations, *Icarus*, 332, 19–23, 2019.
- Davies, K.: *Ionospheric radio propagation*, vol. 80, US Department of Commerce, National Bureau of Standards, 1965.
- 360 Evans, J. V. and Hagfors, T.: *Radar astronomy*, raas, 1968.
- Giorgini, J., Chodas, P., and Yeomans, D.: Orbit uncertainty and close-approach analysis capabilities of the horizons on-line ephemeris system, in: *DPS*, vol. 33, pp. 58–13, 2001.
- Giorgini, J. D., Benner, L. A., Ostro, S. J., Nolan, M. C., and Busch, M. W.: Predicting the Earth encounters of (99942) Apophis, *Icarus*, 193, 1–19, 2008.
- 365 Goldstein, R. and Carpenter, R.: Rotation of Venus: Period estimated from radar measurements, *Science*, 139, 910–911, 1963.
- Harmon, J. K., Slade, M. A., and Rice, M. S.: Radar imagery of Mercury’s putative polar ice: 1999–2005 Arecibo results, *Icarus*, 211, 37–50, 2011.
- Kastinen, D., Tveito, T., Vierinen, J., and Granvik, M.: Radar observability of near-Earth objects using EISCAT 3D, *Annales Geophysicae*, in review, <https://doi.org/10.5194/angeo-2020-19>, 2020.
- 370 Kero, J., Kastinen, D., Vierinen, J., Grydland, T., Heinselman, C. J., Markkanen, J., and Tjulin, A.: EISCAT 3D: the next generation international atmosphere and geospace research radar, 2019.
- Margot, J.-L., Campbell, D. B., Jurgens, R. F., and Slade, M. A.: Digital elevation models of the Moon from Earth-based radar interferometry, *IEEE Transactions on Geoscience and Remote Sensing*, 38, 1122–1133, 2000.
- McCrea, I., Aikio, A., Alfonsi, L., Belova, E., Buchert, S., Clilverd, M., Engler, N., Gustavsson, B., Heinselman, C., Kero, J., et al.: The science case for the EISCAT_3D radar, *Progress in Earth and Planetary Science*, 2, 21, 2015.
- 375 Ostro, S. J.: Planetary radar astronomy, *Reviews of Modern Physics*, 65, 1235, 1993.
- Phillips, R. J., Raubertas, R. F., Arvidson, R. E., Sarkar, I. C., Herrick, R. R., Izenberg, N., and Grimm, R. E.: Impact craters and Venus resurfacing history, *Journal of Geophysical Research: Planets*, 97, 15923–15948, 1992.
- Rogers, A. and Ingalls, R.: Venus: Mapping the surface reflectivity by radar interferometry, *Science*, 165, 797–799, 1969.
- 380 Shalygin, E., Basilevsky, A., Markiewicz, W., Titov, D., Kreslavsky, M., and Roatsch, T.: Search for ongoing volcanic activity on Venus: Case study of Maat Mons, Sapas Mons and Ozza Mons volcanoes, *Planetary and Space Science*, 73, 294–301, 2012.

- Shiokawa, K., Mori, M., Otsuka, Y., Oyama, S., Nozawa, S., Suzuki, S., and Connors, M.: Observation of nighttime medium-scale travelling ionospheric disturbances by two 630-nm airglow imagers near the auroral zone, *Journal of Atmospheric and Solar-Terrestrial Physics*, 103, 184–194, 2013.
- 385 Spudis, P., Bussey, D., Baloga, S., Cahill, J., Glaze, L., Patterson, G., Raney, R., Thompson, T., Thomson, B., and Ustinov, E.: Evidence for water ice on the Moon: Results for anomalous polar craters from the LRO Mini-RF imaging radar, *Journal of Geophysical Research: Planets*, 118, 2016–2029, 2013.
- Stamm, J., Vierinen, J., Urco, J. M., Gustavsson, B., and Chau, J.: Radar observability of near-Earth objects using EISCAT 3D, *Annales Geophysicae*, in review, <https://doi.org/10.5194/angeo-2020-28>, 2020.
- 390 Thompson, T.: A review of Earth-based radar mapping of the Moon, *The moon and the planets*, 20, 179–198, 1979.
- Thompson, T. W.: High resolution lunar radar map at 7.5 meter wavelength, *Icarus*, 36, 174–188, 1978.
- Thompson, T. W., Campbell, B. A., Ghent, R. R., Hawke, B. R., and Leverington, D. W.: Radar probing of planetary regoliths: An example from the northern rim of Imbrium basin, *Journal of Geophysical Research: Planets*, 111, 2006.
- Vierinen, J.: Beacon satellite receiver software for ionospheric tomography, 2011.
- 395 Vierinen, J., Markkanen, J., Krag, H., Siminski, J., and Mancas, A.: Use of EISCAT 3D for Observations of Space Debris, 2017a.
- Vierinen, J., Tveito, T., Gustavsson, B., Keseraju, S., and Milla, M.: Radar images of the Moon at 6-meter wavelength, *Icarus*, 297, 179–188, 2017b.