

Anonymous Referee #1

General Comments:

This manuscript compares two events in which ICMEs impact Earth's magnetosphere and cause responses in both trapped and precipitating radiation belt electrons. They qualitatively compare and contrast the timing, characteristics, and magnetospheric response during these two events, one of which has magnetic cloud orientation and rotation of Bz North to South, and the other South to North. They describe in detail both events, but as currently presented, it is difficult to directly compare the events or attribute their differences specifically to the ICME characteristics. I recommend the following specific comments be addressed to help clarify the manuscript and its findings.

We thank the referee for the careful reading of our manuscript and his/her constructive comments. We have revised the paper accordingly. Please find our responses below.

Specific Comments:

1. It is difficult to compare and contrast the two events directly as they are currently presented. Please consider incorporating some of the following potential suggestions to help the reader better identify the key take-aways from the two-event comparison:

- Combining Fig 1 and 3, 2 and 4 (as left and right panels, e.g.) would help the reader better look at the relative timing and magnitude of the magnetospheric response during these two events

Figures 1 and 3, and 2 and 4 have been combined as suggested.

- Including a summary table or figure in the discussion of the different key parameters that were investigated and their similarities/differences between events would also help, since there is a lot of detailed description and text in the discussion section to sift through.
A color-coded summary table of selected solar wind conditions, wave activity, and electron flux response during the sheath, ejecta, and recovery phases of the two events has been added.

2. Is there a reason the EMIC wave observations are taken from GOES rather than Van Allen Probes? Please include the MLT of both spacecraft during these observations, since this can have a large influence on which wave populations will be sampled.

MLT information for the Van Allen Probes have been added to the Wave Activity figure to show when they are on the dayside and nightside of the Earth.

The following text has been added to the Data and Methods section to explain the use of GOES data for the EMIC waves:

“RBSP data can be used to calculate local ULF and EMIC wave powers on shorter timescales, but these data are not ideal for the analysis of ULF or EMIC waves over the

course of an event. The global nature of these waves mean that they are poorly observed over long time periods by the RBSP, as these satellites rapidly move through the different regions of the inner magnetosphere, sampling a range of plasma environments over the course of a half-orbit. By comparison, the GOES satellites are better suited to ULF and EMIC observations over a longer time period as they remain at the same distance for the duration of the analysed events.”

Additionally, summing the hiss and chorus wave power from the Van Allen Probes (as you’ve done for GOES Pc5 and EMIC measurements) in Fig 2 and 4 would make these plots easier to more quantitatively compare between the two events.

The hiss and chorus wave power has been summed as suggested.

3. The plasmopause location might be more useful to show in the figures of radiation belt fluxes (5, 7) rather than solar wind data, so that the trapped fluxes inside and outside of the plasmasphere can be better identified in Van Allen Probes data.

We have plotted an overlay of the magnetopause and plasmopause position on the colour maps of precipitating and trapped electron flux, in addition to showing the magnetopause and plasmopause location in the Solar Wind Conditions figure.

4. POES data:

- was using the P6 channel considered, for comparison to the trapped MeV electron populations?

No. Channel P6 measures protons but has significant contamination from relativistic electrons. Measurements from this channel have been previously used in qualitative analysis of relativistic electron precipitation (Peck et. al, 2015, 10.1002/2014JA020817) by cross-referencing the P6 measurements with other proton measurements to isolate the electron contamination (Rodger et al., 2010, 10.1029/2008JA014023). According to Rodger et al., “there is an energy-dependent time delay observed in the POES/SEM-2 observations, with an almost one-week delay between the >30 keV electron enhancement and the P6omni relativistic electron enhancement”. Since each of the evaluated time periods were less than a week, the relativistic electron flux enhancements / depletions caused by the ICME would likely not be observed in the P6 channel. Therefore, we elected to focus on direct measurements of electron flux in the lower energy channels rather than attempt to incorporate indirect measurements of high energy electrons.

- line 501-503: Why is the precipitation enhancement here (as opposed to at other times) assumed to be due to a trapped flux enhancement? Some further justification of this is needed.

Upon further consideration, we have changed our explanation of this precipitation enhancement.

This text:

“The observed precipitation flux enhancement occurring prior to the trapped flux enhancement is likely not due to a true increase in precipitating flux at this time, but

rather due to the 90° POES telescope measuring the trapped flux enhancement before it was measured by RBSP.”

...has been changed to:

“The precipitating flux enhancement preceding the trapped flux enhancement may be due to increased chorus and EMIC wave activity at this time causing greater scattering of the existing lower energy populations into the bounce-loss cone. A different mechanism may have then caused the trapped flux enhancement at a slightly later time.”

This also raises the general question of how to interpret the POES data as it is presented, if enhancements can be due just as easily to enhancements in trapped fluxes as enhancements in precipitation. While the caveats of the current technique for presenting the POES data (equation 1 of the manuscript) are nicely mentioned, it is not clear how much better they are than presenting just the 0deg telescope measurements for the purposes of this event comparison.

The following text has been added to the Data and Methods section:

“This means that the POES 0° detectors do not resolve fluxes near the edge of the loss cone in the case of partially filled loss cones. Therefore, the 0° detector chronically underestimates fluxes in the loss cone... Despite [the drawbacks of Eq. 1], this approach for precipitating flux is still superior to the direct 0° telescope measurements because it provides a more accurate estimate of the total fluxes in the loss cone at the latitudes evaluated in this study.”

Technical Corrections:

1. please double check the color bar axis units (e.g. Fig 5) – it looks like the REPT >3.4MeV fluxes are larger than those in MagEIS >346 and >1079 keV channels.

This has been corrected. REPT units were per MeV while MagEIS were per keV. The data has been adjusted so all fluxes are per keV

2. line 381 – typo: “decreases” should be “decreased” or “decreasing”

Corrected: decreases -> decreasing

3. line 387 – depletion at “high L-shell” is discussed, but then referenced as “low latitude” – shouldn’t higher L shells map to higher latitudes?

Corrected: low latitude -> high latitude

4. line 400 – typo: “event 2 exhibits moderate level” -> “moderate levels”

Corrected: level -> levels

Anonymous Referee #2

This manuscript compares observations from the inner magnetosphere during two different CME-driven storms. The storms are of a similar magnitude but driven by CMEs with opposite rotations of the Bz magnetic field component. The manuscript describes differences in the timing and features of the solar wind during the chosen storms and

compares them with the observations of wave activity from RBSP and GOES, precipitating electron flux at POES, and source, seed, and radiation belt electron fluxes at RBSP. The manuscript concludes that the location and timing of the southward component of the magnetic field is a key factor in driving the differences in the timing of trapped and precipitating flux variations during CME-driven storms. The manuscript is very nicely written and provides new insight, but there are comments which should be addressed prior to publication.

We thank the referee for the careful reading of our manuscript and his/her constructive comments. We have revised the paper accordingly. Please find our responses below.

Main Comment:

The manuscript currently needs to take better care addressing the effects of the local time of the spacecraft in their analysis. The RBSP spacecraft have quite different locations in apogee during the two events which are compared. During event 1 RBSP is primarily on the dayside. During event 2 it is near dusk. There is a local time dependency of chorus (e.g. Li et al., 2009; Meredith et al., 2012), source/seed electrons (e.g. Allison et al., 2017; Korth et al., 1999), and potentially a storm phase dependency on the local time of chorus/source electrons (Bingham et al., 2019). As such, one would not necessarily expect to observe the same timings and intensities of lower energy electron flux and chorus wave activity during each storm. While the manuscript has a thorough description of most of the timing of various features observed, this is one part that still needs to be better addressed.

Additional information on the effects of MLT on electron flux response and wave activity has been incorporated into the manuscript. Information on local time of the RBSP in these two events has also been added. See the responses below and the responses to Referee 1's comments for details.

Other comments:

Chorus and hiss waves are not necessarily going to be the only waves present between 100–10000 Hz over an RBSP orbit. That is not to say that they will not be the dominant ones. Most of the features shown certainly look chorus-like and hiss-like. However, I think a little more care could be used either in describing caveats of the chorus/hiss observations as they are, or using the wave properties to provide greater certainty that the waves shown are in fact chorus/hiss.

The following text has been added to the Data and Methods section: “We have elected to use only the wave frequency and location inside or outside the plasmasphere to categorise these waves as either chorus waves or plasmaspheric hiss for simplicity.”

While they will only be from a limited local time, including RBSP observations of the plasmopause location could provide useful context for the events and provide a comparison

to the empirical model currently used.

We agree that inclusion of RBSP measurements of plasmopause location would be useful. However, we have elected not to do this. There are significant uncertainties involved with calculating plasmopause location from RBSP electron density data, and there is also limited electron density data for the dates in this study. We think that the plasmopause location from the empirical model is sufficient for the purposes of the study.

Additionally, over plotting the empirical and/or observed plasmopause location on the RBSP electron fluxes would help the reader.

We have plotted an overlay of the plasmopause and magnetopause position on the colour maps of precipitating and trapped electron flux, in addition to showing the magnetopause and plasmopause location in the Solar Wind Conditions figure.

Lines 189-190. "The use of two RBSP satellites over a period of multiple days meant that all MLT were encompassed". RBSP is not able to cover all MLT for all L-shells shown during each event.

The text has been edited to clarify that all MLT were covered at some point in the evaluated time periods, not that every MLT was covered at every L-shell

Line 297-298. "Dst begins to decrease rather steadily soon after the ejecta leading edge arrives at Earth, reaching a minimum value of 102 nT on June 29, 2013, 07:00 UT." How much of the initial decrease in Dst is due to passing of the sheath region and the end of the sudden storm commencement? After an initial decrease, Dst seems to be at a rather constant value, which is pretty comparable to the prestorm value, for the first 8 hours of 28/06/13.

Changed "soon" to "approximately eight hours" and added the sentence "There is a minor decrease in Dst at the ejecta leading edge, but it remains close to pre-event levels." to better explain the evolution of the Dst index throughout the sheath region and early portion of the ejecta

Line 381. Typo: "The source population flux is strongly decreases towards the time of the ejecta trailing edge"

Corrected: decreases -> decreasing

Figures 1-4. Minor tickmarks on the x-axis every few hours would be helpful to the reader.

Additional minor tickmarks have been added to the x-axis in all figures

Similarly, many of the line flux plots with a log y-axis could use more tickmarks on the y-axis for reference.

Minor y-axis tickmarks have been added to the Median Flux plots

- Allison et al. (2017). The magnetic local time distribution of energetic electrons in the radiation belt region. JGR. doi: 10.1002/2017JA024084
- Bingham et al. (2019). The Storm Time Development of Source Electrons and Chorus Wave Activity During CME and CIR Driven Storms. JGR. DOI:10.1029/2019JA026689
- Korth et al. (1999). Plasma sheet access to geosynchronous orbit. JGR. DOI:10.1029/1999JA900292
- Li et al. (2009). Global distribution of whistler-mode chorus waves observed on the THEMIS spacecraft. GRL. DOI:10.1029/2009GL037595
- Meredith et al. (2012). Global model of lower band and upper band chorus from multiple satellite observations. JGR. DOI:10.1029/2012JA017978

The suggested citations have been incorporated into the Introduction section. A paragraph has been added on MLT dependence of trapped electron fluxes at the energies evaluated in this study. Further information on the impact of MLT and geomagnetic activity on chorus wave activity and distribution has also been added to the paragraph on magnetospheric wave activity.

Outer Van Allen belt trapped and precipitating electron flux responses to two interplanetary magnetic clouds of opposite polarity

Harriet George¹, Emilia Kilpua¹, Adnane Osmane¹, Timo Asikainen², Milla M. H. Kalliokoski¹, Craig J. Rodger³, Stepan Dubyagin⁴, and Minna Palmroth¹

¹Department of Physics, University of Helsinki, Helsinki, Finland

²Department of Physics, University of Oulu, Oulu, Finland

³Department of Physics, University of Otago, Dunedin, New Zealand

⁴Finnish Meteorological Institute, Helsinki, Finland

Correspondence: Harriet George (harriet.george@helsinki.fi)

Abstract. Recently, it has been established that interplanetary coronal mass ejections (ICMEs) can dramatically affect both trapped electron fluxes in the outer radiation belt and precipitating electron fluxes lost from the belt into the atmosphere. Precipitating electron fluxes and energies can vary over a range of timescales during these events. These variations depend on the initial energy and location of the electron population, as well as the ICME characteristics and structures. One important factor controlling electron dynamics is the magnetic field orientation within the ejecta that is an integral part of the ICME. In this study, we examine Van Allen Probes (RBSP) and Polar Orbiting Environmental Satellites (POES) data to explore trapped and precipitating electron fluxes during two ICMEs. The ejecta in the selected ICMEs have magnetic cloud characteristics that exhibit opposite sense of rotation of the north-south magnetic field component (B_Z). RBSP data are used to study trapped electron fluxes in situ, while POES data are used for electron fluxes precipitating into the upper atmosphere. The trapped and precipitating electron fluxes are qualitatively analysed to understand their variation in relation to each other and to the magnetic cloud rotation during these events. Inner magnetospheric wave activity was also estimated using RBSP and Geostationary Operational Environmental Satellite (GOES) data. In each event, the largest changes in the location and magnitude of both the trapped and precipitating electron fluxes occurred during the southward portion of the magnetic cloud. Significant changes also occurred during the end of the sheath and at the sheath-ejecta boundary for the cloud with south to north magnetic field rotation, while the ICME with north to south rotation had significant changes at the end boundary of the cloud. The sense of rotation of B_Z and its profile also clearly affects the coherence of the trapped/precipitating flux changes, timing of variations with respect to the ICME structures, and flux magnitude of different electron populations. The differing electron responses could therefore imply partly different dominant acceleration mechanisms acting on the outer radiation belt electron populations as a result of opposite magnetic cloud rotation.

20 1 Introduction

The Van Allen radiation belts are highly dynamic regions of charged particles trapped in the Earth's geomagnetic field (Van Allen, 1981). The traditional picture of the belts consists of two toroidal regions of energetic particles that are separated

by a relatively empty slot region. One of these two regions is the inner belt, which is located at $\sim 1.2R_E < r < 2R_E$ and is dominated by high-energy protons, while the outer belt is located at $\sim 3R_E < r < 10R_E$ and is dominated by energetic electrons. The structure of the outer belt is highly dynamic, and electron fluxes can vary drastically with timescales ranging from seconds to months (e.g., Baker et al., 2018; Reeves et al., 2013). The radiation belts encompass regions that various satellites, including communications and navigation satellites, pass through. Exposure to high levels of radiation can damage these satellites, especially the sensitive electronics on-board, thus shortening the lifespan and reducing the functionality of the satellites. Another key societal interest related to radiation belt electron dynamics is the precipitation of energetic electrons from the belts to the upper atmosphere (e.g., Rodger et al., 2010; Verronen et al., 2011). Precipitating electrons cause pulsating aurora (e.g., Partamies et al., 2017; Grandin et al., 2017) and they can affect chemical composition and dynamics of the middle atmosphere, and therefore are important to take into account in climate models (e.g., Maliniemi et al., 2013; Salminen et al., 2019; Seppälä et al., 2014). It is thus highly important to be able to understand radiation belt trapped electron fluxes as well as the precipitating electron fluxes lost from the belts into the upper atmosphere.

Recently, outer radiation belt electrons have been divided into source, seed, core and ultrarelativistic populations depending on their energy. Source electrons are tens of kiloelectron volts (keV) (e.g., Jaynes et al., 2015), seed electrons are hundreds of keVs (e.g., Jaynes et al., 2015), core electrons range from about 500 keV to 1-2 megaelectron volts (MeV) (e.g., Boyd et al., 2016), and ultrarelativistic electrons have energies from several MeVs upwards (e.g., Boyd et al., 2016). Changes in electron flux in the outer radiation belt may be due to either temporary adiabatic variations (Li et al., 1997; Tu and Li, 2011), or genuine loss or gain processes. These processes affect different electron populations in different ways, and are modulated by various geospace conditions, such as geomagnetic storms.

Real loss or gain processes result in a change in the flux of a given population that persists after storm recovery. In the outer radiation belt, the two main loss processes that genuinely displace particles outside the belt are magnetopause shadowing and precipitation into the upper atmosphere. Magnetopause shadowing occurs when electron drift trajectories cross the magnetopause, resulting in permanent loss from the belt to the solar wind (e.g., Turner et al., 2014). This requires that the magnetopause is displaced significantly Earthward, which occurs through compression due to enhanced solar wind dynamic pressure and/or erosion due to a strongly southward interplanetary magnetic field (Shue et al., 1998). Shadowing losses can be enhanced by outward radial diffusion of electrons (e.g., Mann et al., 2016) and the so-called Dst effect (e.g., Kim and Chan, 1997; Li et al., 1997), i.e., the adiabatic expansion of electron drift paths and consequent adiabatic electron deceleration when enhanced ring current weakens the Earth's magnetic field. Electron precipitation occurs when particles enter the loss cone, and is typically caused by wave-particle interactions or major reconfiguration of the magnetotail (e.g., Sivadas et al., 2017). It has been suggested that the primary loss mechanism of radiation belt particles during geomagnetic storms is precipitation into the upper atmosphere (e.g., Clilverd et al., 2006, 2007). When this occurs, the electrons collide with atmospheric constituents and are thus permanently lost from the radiation belt.

A significant gain process in the outer radiation belt is the substorm injection of electrons into the inner magnetosphere from the plasma sheet (Korth et al., 1999). The access of plasma sheet electrons to the radiation belts is dependent on both magnetic local time (MLT) and geomagnetic activity (Korth et al., 1999). This results in significant

MLT variation in trapped electron fluxes. There are greater source electron injections from the nightside plasma sheet during geomagnetic storms due to a denser plasma sheet and stronger convective electric field (Bingham et al., 2019), so MLT asymmetries become more prominent at higher activity levels (Allison et al., 2017). Fluxes in the dawn sector are typically greater than those in the dusk sector because substorm injections of electrons occur in the dawn sector and then undergo various loss processes throughout the day (Allison et al., 2017). For example, there are prominent dawn-dusk asymmetries in trapped fluxes at energies of > 30 keV, > 100 keV, and > 300 keV (e.g., Allison et al., 2017). In these trapped electron populations, the injections at the dawn sector are stronger than losses via precipitation, leading to strongest fluxes on the dawnside (Allison et al., 2017). The total > 30 keV fluxes then decrease throughout the day sector as precipitation becomes increasingly dominant over plasma sheet injections. The dawn-dusk asymmetries in the > 300 keV population are likely additionally influenced by magnetopause shadowing on the dayside of the Earth (Allison et al., 2017).

A number of plasma waves exist in the outer belt region of the inner magnetosphere that interact with the various trapped electron populations in this region (e.g., Baker et al., 2018). For example, whistler mode chorus waves effectively scatter lower energy electrons (few tens of keV) (e.g., Lam et al., 2010), and large-amplitude chorus waves can also lead to rapid scattering of MeV electrons in microburst events (e.g., Douma et al., 2017; Osmane et al., 2016). Chorus waves are generated by temperature anisotropies of injected suprathermal source electrons, and are thought to be the primary cause of progressive acceleration of lower energy seed electrons to relativistic energies (e.g., Jaynes et al., 2015; Rodger et al., 2016; Bingham et al., 2019). Chorus waves are primarily observed in the dawn sector and are less intense in the dusk sector (Allison et al., 2017), resulting in MLT-dependent electron precipitation. This MLT dependence of chorus waves occurs because the peak chorus wave power follows the drift history of source electrons (Bingham et al., 2019). Nightside chorus waves are weak and confined near the geomagnetic equator, but dayside chorus waves are more persistent and occur at higher latitudes (Li et al., 2009). Geomagnetic activity also affects chorus wave power and spatial distribution, with largest amplitudes occurring in storm conditions (Meredith et al., 2012; Agapitov et al., 2013). Equatorial lower and upper band chorus waves are most active from $4 < L^* < 9$ at 2300-1200 MLT and $3 < L^* < 7$ at 2300-1100 MLT respectively (Meredith et al., 2012). At mid-latitudes, lower band chorus wave activity peaks at $4 < L^* < 9$ at 0700-1400 MLT in active conditions, while upper band chorus activity is low even during active conditions (Meredith et al., 2012). During ICMEs, chorus wave activity is strongest at MLT 2100 - 1200 during the main phase of the storm (Bingham et al., 2019). Chorus waves can evolve into plasmaspheric hiss via refractions into the plasmasphere, followed by reflections within the plasmasphere (Bingham et al., 2019). Plasmaspheric hiss is the key precipitating wave mode in the plasmasphere, and timescales for interaction with this wave mode range from a few hours for source electron energies to several days for relativistic electrons (Kavanagh et al., 2018; Li et al., 2015; Selesnick et al., 2003). Acceleration of seed electrons can also occur via inward radial diffusion by ultra-low frequency (ULF) Pc4-Pc5 waves (e.g., Jaynes et al., 2018; Mann et al., 2013). Electromagnetic ion cyclotron (EMIC) waves have strong resonance with > 2 MeV electrons (e.g., Meredith et al., 2003; Usanova et al., 2014). EMIC waves also interact non-resonantly with electrons of energies as low as a few hundred keV, and these low-energy interactions may be elevated in geomagnetically active conditions (e.g., Blum et al.,

2019; Hendry et al., 2017). These various waves are present at different times and locations and can cause both acceleration and pitch angle scattering of electrons (e.g., Rodger et al., 2019). Precipitation into the upper atmosphere occurs if pitch angles are changed in such a way that electrons enter the loss cone. Interactions can lead to either enhancements or depletions of the electron population, depending on the energy of the population and wave properties (e.g., Rodger et al., 2007). The variation of trapped flux of electrons in the outer radiation belt and the subsequent precipitation into the upper atmosphere is therefore extremely complex due to the wide range of processes acting on the various electron populations.

The radiation belt system is constantly influenced by changing solar wind conditions impinging on the Earth's magnetosphere, with the most drastic variations occurring during large-scale heliospheric structures. In this work, we focus on the impact of interplanetary coronal mass ejections (ICMEs, e.g., Kilpua et al., 2017) on the radiation belt system. An ICME is the interplanetary counterpart of a sudden ejection of magnetised plasma from the Sun. The integral component of the ICME is the driver ejecta that regularly features a magnetic flux rope or a "magnetic cloud" configuration with smoothly changing magnetic field direction and enhanced magnetic field magnitude (e.g., Burlaga et al., 1981). When an ICME is sufficiently faster than the preceding solar wind, a leading shock and a sheath region forms ahead of the ejecta. Sheaths typically feature a turbulent magnetic field and high dynamic pressure due to their compressive nature. The sheath and ejecta of ICMEs are known to have significantly different impacts on electrons fluxes within the outer radiation belt (Kallioikoski et al., 2019), and magnetic clouds are a particularly geoeffective subset of ICME ejecta. One feature of magnetic clouds that strongly affects their geoeffectiveness is the magnetic polarity (e.g., Bothmer and Schwenn, 1998; Huttunen et al., 2005). For example, the development, depth, and power of chorus waves and trapped electrons are strongly driven by magnetic field orientation of the solar wind (Bingham et al., 2019). Southward magnetic fields undergo effective magnetic reconnection at the dayside magnetopause and subsequently enable efficient transfer of solar wind energy and plasma to the magnetosphere, inducing large changes in the radiation belt system. Northward magnetic fields have less effective reconnection, and therefore have a less pronounced impact on radiation belt dynamics than southward magnetic clouds. Some magnetic clouds have southward fields in their leading part that rotate to northward orientation by the trailing edge (South-North or SN type cloud), so turbulent sheath fields are close to southward fields in the cloud. Other magnetic clouds exhibit opposite rotation (North-South or NS type cloud). NS type clouds may enhance geoeffectivity following the end of the ICME due to interactions between the southward magnetic field and the trailing solar wind (e.g., Fenrich and Luhmann, 1998; Kilpua et al., 2012).

Due to the complexity of the radiation belt response, the impact of ICMEs on outer radiation belt electrons is not yet fully understood. ICMEs can cause enhancements, depletions, or no change in electron flux in a given population depending on the ICME characteristics and initial radiation belt conditions (e.g., Kilpua et al., 2015a; Reeves et al., 2003; Turner et al., 2019). ICMEs have also been observed to trigger strong responses in precipitating flux over a range of locations and time scales (e.g., Clilverd et al., 2007). However, the relationship between electron precipitation into the upper atmosphere and enhancement or depletion of trapped electron flux in the outer radiation belt remains an open research area.

In this study, we compare data from Polar Orbiting Environmental Satellites (POES) and Van Allen Probes (RBSP) for two case studies of ICMEs near the maximum of Solar Cycle 24 with SN (31/12/2015) and NS (27/06/2013) magnetic cloud rotations. The Van Allen Probes measure trapped electron fluxes within the radiation belts while POES provides a measure of

the electron fluxes precipitating into the upper atmosphere. We use these data to qualitatively analyse the relationship between outer radiation belt trapped electron fluxes, from source to ultrarelativistic energies, and precipitating fluxes during these two
130 ICMEs. Of particular interest is the electron response to different magnetic field orientations within each event, and also to opposite magnetic cloud rotations in the two case studies.

2 Data and Methods

The two ICME events that were evaluated in this study impacted the Earth on 26 June 2013 and 30 December 2015. The start and end times of these ICMEs were taken from the Cane and Richardson online database (<http://www.srl.caltech.edu/ACE/ASC/DATA/level3/icmetable2.htm>; Richardson and Cane, 2010). As discussed in the Introduction, these two ICMEs were
135 selected due to their clear magnetic cloud configuration and opposite rotation of magnetic polarity (SN and NS, respectively). Additionally, both ICME drove a leading shock, enabling comparison of the impacts of ICME sheath and ejecta on electron dynamics, and comprehensive datasets from various satellites were available for the duration of the two events.

Solar wind data are obtained from the Wind spacecraft. The Magnetic Fields Investigation (MFI) is used for magnetic field
140 data, and solar wind speed and pressure are measured by the Solar Wind Experiment (SWE). The Disturbance Storm Time (Dst) data are retrieved from WDC Kyoto in one hour time resolution. The AL index, a measure of the strongest current intensity of the westward auroral electrojet, is taken from the OMNI database in one minute time resolution. The magnetopause position is calculated from the Shue et al. (1998) model, using the five minute means of the Z -component of the magnetic field (B_z) and dynamic pressure ($P_{D_{ym}}$). The plasmopause location is calculated from maximum AE values in one hour time intervals,
145 as detailed in O'Brien and Moldwin (2003).

We also investigate wave activity in the inner magnetosphere. The chorus and hiss wave activity is investigated using RBSP Magnetic Field Instrument Suite and Integrated Science (EMFISIS) (Kletzing et al., 2013) magnetometer Level 2 data from the EMFISIS website (<https://emfisis.physics.uiowa.edu/data/index>). The electron cyclotron frequencies at the equator ($f_{ce,eq}$) were calculated based on the Tsyganenko and Sitnov geomagnetic field model (TS04D) (Tsyganenko and Sitnov,
150 2005). Usually lower-band whistler mode chorus waves occur between $0.1f_{ce,eq} < f < 0.5f_{ce,eq}$ and the upper-band between $0.5f_{ce,eq} < f < 1.0f_{ce,eq}$ (e.g., Burtis and Helliwell, 1969; Koons and Roeder, 1990), but patches of chorus waves that continue to lower frequencies have been observed at higher latitudes (e.g., Cattell et al., 2015; Xiao et al., 2017). Plasmaspheric hiss occurs typically above 100 Hz and below $\sim 0.1f_{ce,eq}$ inside the plasmasphere (e.g., Hartley et al., 2018). **We have elected to use only the wave frequency and location inside or outside the plasmasphere to categorise these waves as either chorus
155 waves or plasmaspheric hiss for simplicity, acknowledging that other waves such as plasmaspheric plumes or lighting generated whistlers may be present at these frequencies and locations (Meredith et al., 2012).** The wave power in the ULF Pc5 range (2.5 to 10 minutes or frequencies from 2 to 7 mHz) and EMIC range (from 0.2 to 10 seconds or frequencies 0.1 – 5 Hz) were calculated using the geostationary GOES-13 and GOES-15 spacecraft magnetometer (Singer et al., 1996) 0.512-second magnetic field data obtained through <https://www.ngdc.noaa.gov/stp/satellite/goes/dataaccess.html>. **RBSP data
160 can be used to calculate local ULF and EMIC wave powers on shorter timescales, but these data are not ideal for the**

analysis of ULF or EMIC waves over the course of an event. The RBSP travel rapidly over a highly elliptical orbit, so sample a range of plasma environments from different regions of the inner magnetosphere over the course of a half orbit. The ULF waves are global and EMIC waves are long lasting, meaning that they are poorly observed over long time periods by the RBSP. By comparison, the GOES satellites are better suited to ULF and EMIC observations over a longer time period due to their fixed orbit and longer period.

The electron flux measurements were obtained from the Van Allen Probes, which are twin spacecraft (RBSP-A and RBSP-B) on highly elliptical orbits through the radiation belts. Four energies were evaluated in this study: 33keV, 356.0keV, 1.066MeV, and 3.4MeV. These energies correspond to examples of source, seed, core, and ultrarelativistic electron flux populations respectively. The three lower energy channels were measured by the Magnetic Electron Ion Spectrometer (MagEIS: Blake et al. (2013)), while ultrarelativistic electron flux was measured by Relativistic Electron Proton Telescope (REPT: Baker et al. (2012)). Data from the REPT instrument of RBSP-B were unavailable on 30/12/2015, at the start of Event 1, and MagEIS data from RBSP-A were unavailable on 30/6/2013, the final day included in the Event 2 analysis. The Level 2 spin-averaged electron flux data, which has temporal resolution of ~ 11 s, were used in this study.

Data from the Medium Energy Proton and Electron Detector (MEPED) instrument of the Space Environment Monitor (SEM-2) suite onboard the Polar Orbiting Environmental Satellites (POES) were used for the electron precipitation data. The POES satellites used for Event 1 analysis were NOAA-15, NOAA-18, NOAA-19, METOP-01, and METOP-02, and Event 2 analysis used POES data from all of these satellites as well as NOAA-16. POES are well suited for precipitation studies as they orbit the polar regions at low altitudes, near the feet of the Earth's geomagnetic field lines where precipitation takes place (Rodger et al., 2010b). The MEPED instrument contains two telescopes: 0° and 90° that are oriented almost radially outward from the Earth and almost antiparallel to satellite velocity, respectively. Each telescope measures electron flux (J_0 and J_{90} , respectively). At high latitudes, the 0° telescope measures precipitating particles and the 90° telescope measures trapped particles (Rodger et al., 2010a). Both telescopes have a 30° angle of view and records electron flux in three energy channels: > 30 keV, > 100 keV, and > 300 keV. Unfortunately, the use of POES for electron precipitation measurements have several significant problems, such as proton contamination and varying detector efficiency that are both well-documented in the literature (e.g., Asikainen and Mursula, 2013; Rodger et al., 2010b; Tyssoy et al., 2019). The POES data used here has been corrected for these instrumental problems (Asikainen and Mursula, 2011; Asikainen et al., 2012; Asikainen and Mursula, 2013). In addition, the auxiliary POES data dependent on satellite location (e.g., different coordinates, L-values, local times, and model magnetic fields) have been reprocessed (Asikainen, 2017) to produce more accurate values than in the original POES data records. The processed POES dataset has time resolution of 16 seconds.

This study examined the precipitating electron flux from magnetic latitudes 55° to 69° and trapped electron fluxes at L-shells from 3.0 to 8.0. The dipole model of the Earth's magnetic field is used for L-shell, and the International Geomagnetic Reference Field is used to calculate geomagnetic latitude. Significant electron precipitation occurs at these latitudes during magnetospheric storms due to increased electron scattering into the bounce-loss cone. However, the bounce loss cone at these latitudes is significantly larger than the 30° field of view of the POES telescopes (Asikainen, 2019; Rodger et al., 2013). This means that the POES 0° detectors do not resolve fluxes near the edge of the loss cone in the case of partially filled loss cones.

Therefore, the 0° detector chronically underestimates fluxes in the loss cone. Additionally, the 90° telescope records some fluxes in the loss cone at high latitudes (Rodger et al., 2010a), so measures both trapped and precipitating fluxes at the latitudes evaluated in this study. Therefore, we could not use the 0° telescope data as a direct measure of the true precipitating electron fluxes throughout the entirety of the two events. In order to obtain a precipitating flux measurement from POES, we estimate the high-latitude precipitation as the mean of the logarithmic fluxes recorded by the two MEPED telescopes (Eq. 1). We note that this is not a perfect measure of precipitating electron flux (J_{precip}): the inclusion of the 90° telescope means that some trapped flux is always included in our value for J_{precip} , resulting in an overestimation of precipitating flux in periods of high levels of trapped flux. This measure of J_{precip} would also underestimate precipitating flux when there are low levels of trapped flux but high levels of precipitating flux. **Despite these drawbacks, we expect this approach for precipitating flux will be superior to the direct 0° telescope measurements, because it attempts to provide a more accurate estimate of the loss cone fluxes for the latitudes evaluated in this study.** This approximation of electron precipitation from POES data has precedence in the literature (e.g., Hargreaves et al., 2010; Rodger et al., 2013) and is useful for the qualitative analysis of electron precipitation flux undertaken in this study.

$$\log_{10}(J_{precip}) = \frac{1}{2}(\log_{10}(J_0) + \log_{10}(J_{90})) \quad (1)$$

The precipitating electron flux data is binned in 90 minute time bins and 2° latitude bins, and has units of counts per area per steradian per second ($\text{cts cm}^{-2}\text{sr}^{-1}\text{s}^{-1}$). This time bin is selected to roughly correspond to the POES orbital period (102 minutes), which minimises gaps in the binned data. We use data from the three POES electron channels; > 30 keV, > 100 keV and > 300 keV. Note that the > 30 keV channel includes electron observations measured by the > 100 keV and > 300 keV channels, and the > 100 keV similarly contains measurements from the > 300 keV channel. In the case where no data are recorded in a given energy channel and time / latitude bin ($J = -\infty$), the data point is set as NaN. Since multiple POES satellites were used over a period of several days, all MLT were covered in both events. The data from multiple POES satellites are combined by taking the mean of the measured fluxes when multiple satellites are present in the same latitude bin at a given time.

The electron fluxes in the outer belt are analysed in four channels representing source (33.0 keV), seed (356.0 keV), core (1.066 MeV), and ultrarelativistic (3.4 MeV) electron populations. The electron flux data is evaluated from L-shells ranging from 3.0 to 8.0, which corresponds to minimum and maximum evaluated latitudes and encompasses the majority of the outer radiation belt. Note that in each event the RBSP apogee is lower than $L = 8.0$ (69°), which constrains the available flux data. Data at each energy level are binned in 4 hour time bins and 0.5 L-shell bins. The RBSP orbital period is 537 minutes (~ 9 hours), so a four hour time bin results in the highest time resolution with minimal gaps when using data from the two probes. A white bin is used in the colour maps to represent a time- and L-bin where no data were recorded. **The use of two RBSP satellites over a period of multiple days meant that all MLT were encompassed at some point in the evaluated time period, as was also the case for the POES data.** Data from multiple RBSP satellites were combined in the same way as the POES data, i.e. by taking the mean flux when both satellites recorded fluxes in the same time and L-shell bin. There are two

dates when RBSP data were not available for an instrument, as discussed above, and data from a single Van Allen Probe is
230 used on these dates.

The binned trapped flux and precipitation flux data at different energy levels are first plotted as a function of time and location throughout the two events. The median trapped and precipitating fluxes in specific L-shell and latitude bands respectively were then investigated. The latitude ranges investigated were $55^\circ \leq \phi < 60^\circ$, $60^\circ \leq \phi < 65^\circ$, and $65^\circ \leq \phi < 70^\circ$, with corrected geomagnetic latitudes described above. The dipole model of the Earth's magnetic field was used to calculate the corresponding
235 L-shell ranges ($\cos\phi = \frac{1}{\sqrt{L}}$), giving ranges of $3.0 \leq L < 4.0$, $4.0 \leq L < 5.6$, and $5.6 \leq L < 8.0$. This allowed for evaluation of changes in electron trapped and precipitating fluxes during different stages of the ICME, and also allowed comparison between fluxes at a given location.

3 Solar Wind and Geomagnetic Conditions

3.1 Event 1: 30 December 2015 - 2 January 2016

240 The first ICME studied impacted the Earth on 31 December 2015. The left subplots of Figure 1 shows the conditions in the solar wind and interplanetary magnetic field (IMF), as well as geomagnetic indices, for this event over a four day period. On 31 December 2015 at 00:18 UT, the Earth is impacted by the ICME leading shock. This shock has a magnetosonic Mach number of 2.6 and a shock angle (i.e., the angle between the shock normal and upstream magnetic field) of $\theta_{B_n} = 43^\circ$. These values are taken from the Database of interplanetary shocks, (<http://www.ipshocks.fi/>, Kilpua et al. (2015b)). The shock is followed
245 by an ICME impact on 31 December 2015, 17:00 UT that persisted until 2 January 2016 11:00 UT.

There is an enhanced (~ 15 nT) magnetic field during the sheath region, with fluctuating magnetic field strength and large variations in the magnetic field direction, which is a significant increase from quiet time values of ~ 5 nT. The Z -component of the IMF (B_Z) fluctuates from north to south relatively rapidly throughout most of the sheath period. Shortly prior to the arrival time of the leading edge of ICME ejecta, the B_Z exhibits a strong, prolonged (~ 4 hours) southward excursion that reaches
250 ~ -15 nT. At the leading edge of the ICME ejecta, the magnetic field magnitude is ~ 15 nT and this smoothly decreases to ~ 5 nT by the end of the ejecta period. There is also a smooth, coherent magnetic field rotation from south to north during the ejecta period. The ejecta magnetic field is initially strongly southward ($B_z \approx -10$ nT) and rotates throughout the first half of the ejecta period to become northward ($B_z \approx 5$ nT) in the latter portion of the ejecta. B_z then decreases to fluctuate around ~ 0 nT at the end of the ICME. This cloud thus shows a South-North (SN) rotating magnetic field.

255 The solar wind speed is low ($v_{sw} < 400\text{kms}^{-1}$) prior to the shock impact. There is a rapid increase in solar wind speed during the sheath region, which peaks at $v_{sw} \approx 500\text{kms}^{-1}$ several hours after the shock impact. The solar wind speed remains relatively low, $v_{sw} < \sim 500\text{kms}^{-1}$, for the rest of the investigated period. Solar wind dynamic pressure is low before the ICME impact (~ 2 nPa) and the magnetopause is reasonably stable at $\sim 10R_E$. At the shock, dynamic pressure increases and varies between $5 - 10$ nPa in the sheath. The magnetopause rapidly shifts to $\sim 8R_E$ at the shock impact, and then moves Earthward
260 during the sheath region period, finally reaching geostationary orbit as a response to the compression by higher solar wind dynamic pressure and erosion due to southward IMF (Shue et al., 1998). Upon ejecta impact, there is an abrupt decrease

Solar Wind Conditions

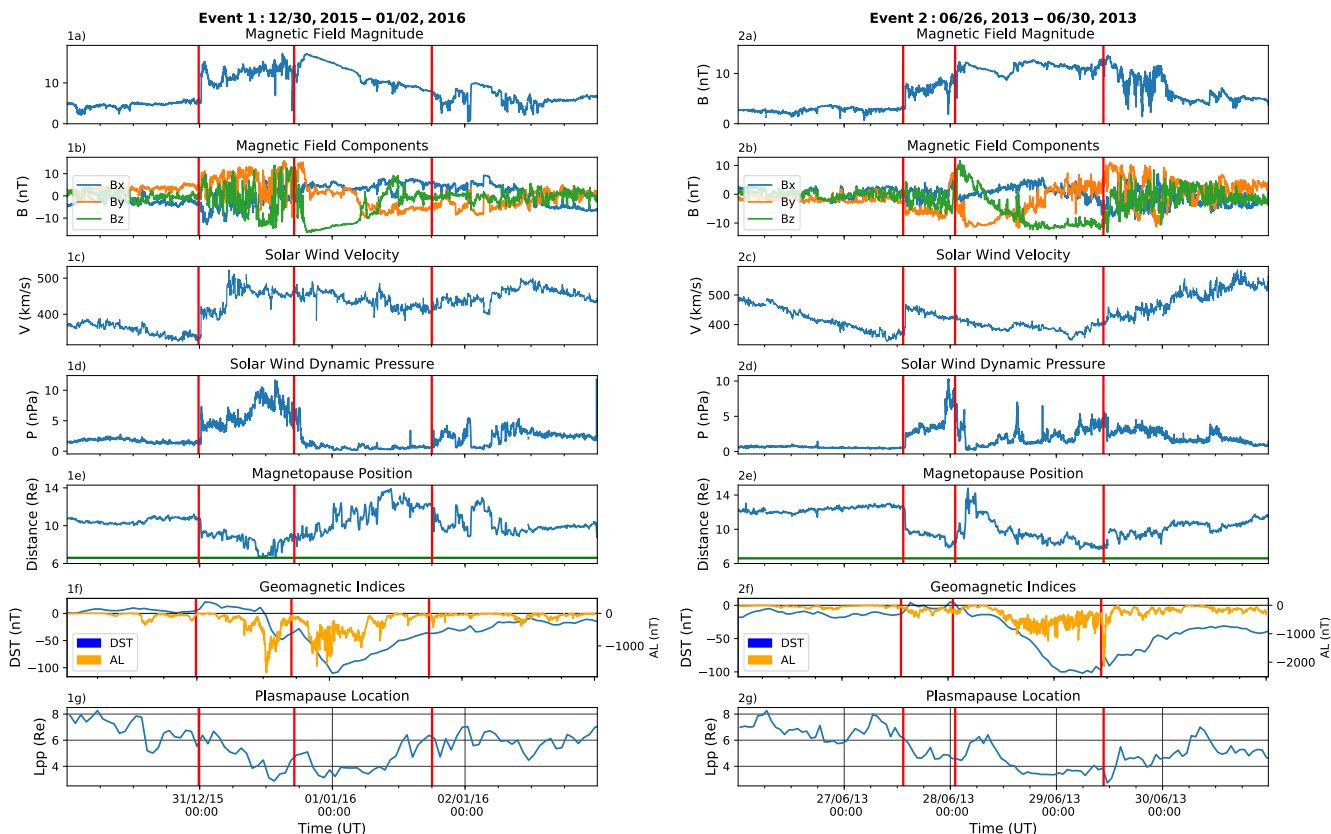


Figure 1. Modified figure and caption. Solar wind and interplanetary magnetic field conditions during the two evaluated events. The red lines indicate the times when the shock, ICME ejecta impact, and ICME end occurred in each event. These times divide the data into a pre-event period, sheath region, ICME proper, and post-event period. A clear South-North magnetic cloud rotation can be observed in subplot b in Event 1, while subplot b in Event 2 shows a South-North magnetic field rotation. The green line in subplot d shows the location of geostationary orbit.

in dynamic pressure (~ 1 nPa) and the magnetopause moves further away from Earth. The magnetopause expands to almost $14R_E$, which is considerably further from Earth than its nominal location, and this large expansion is due to low dynamic pressure combined with northward IMF in the trailing portion of the ejecta period. In the post event period, solar wind dynamic pressure enhances to 3-5 nPa. The magnetopause location fluctuates after the end of the ICME and returns to its nominal location ($\sim 10R_E$) approximately 12 hours after the end of the ejecta.

The plasmapause is initially relatively far from the Earth, between $L \sim 6 - 8R_E$. During the sheath period, the plasmapause shrinks steadily Earthward to $L \sim 2.5R_E$. There is a short-lived expansion after the ejecta impact, but the plasmapause quickly returns to $L \sim 3R_E$ during the southward leading fields of the magnetic cloud when there is strong global magnetospheric convection. The plasmapause remains at $L \sim 3R_E$ for the rest of the southward portion of the ejecta period. Therefore, the

Wave Conditions

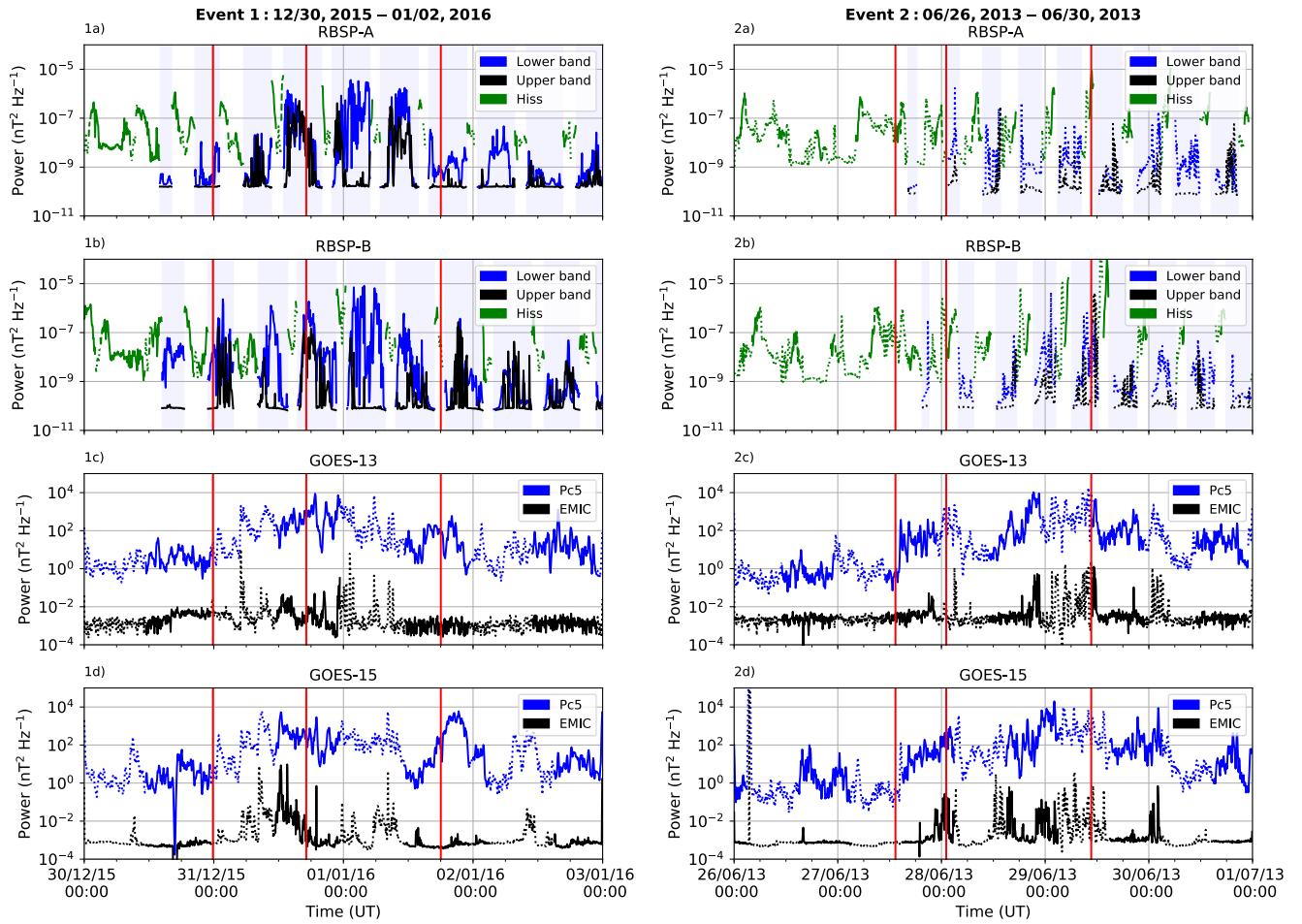


Figure 2. Modified figure and caption. Wave power during the two evaluated events. Event 1 is shown in the left subplots and Event 2 is on the right. The upper two subplots show the upper and lower chorus wave power and the hiss power, as measured by RBSP-A and RBSP-B. The shaded region in the RBSP subplots represents times when the satellite was outside the plasmasphere. The lower two subplots show ULF Pc5 and EMIC wave powers as calculated from GOES magnetometer data. In all subplots, dotted lines represent times when the satellite was on the nightside of the Earth and solid lines represent dayside satellite locations. The vertical red lines again indicate the times of shock impact, ejecta impact start, and ejecta end, as shown in Figure 1.

majority of the outer belt is outside the plasmasphere for the majority of the time period evaluated in this study. When the field turns northward and convection weakens, the plasmapause moves to $L \sim 6 - 7R_E$ and stays at this L-range for the rest of the investigated period. Therefore, the outer radiation belt is largely inside the plasmasphere at the end of the cloud and during the post-event phase.

275 Both Dst and AL indices show geomagnetically very quiet conditions before the ICME. At the shock and during the first half
of the sheath region, Dst attains slightly positive values due to high dynamic pressure combined with dominantly northward
IMF. Near the end of the sheath region, at the time of the extended southward fields and strong dynamic pressure, geomag-
netic activity increases considerably. Dst sharply decreases to ~ -50 nT and AL indicates a strong substorm with a spike to
approximately -1800 nT. There is a slight increase in Dst index and weakening of AL activity just before the ICME impact,
280 but activity soon enhances again during the strongly southward IMF in the leading edge of the cloud. Dst drops and reaches
its lowest value of ~ -110 nT at approximately 01:00 UT on January 1, 2016. This event thus causes an intense geomagnetic
storm (i.e., Dst less than -100 nT). The AL index again shows strong high-latitude activity during the ejecta period as it fluc-
tuates between ~ -300 and -1300 nT. The storm recovery phase begins when the field turns northward, as shown by the AL
and Dst recovery. Dst increases steadily for the remainder of the ICME ejecta period and returns to quiet time values by the end
285 of the analysed time period. AL recovers faster than Dst, and there is very minimal substorm activity during the post-ICME
period.

Next, we describe the wave activity observed in the inner magnetosphere, as shown in the left subplots of Fig. 2. There are
initially low levels of chorus, hiss, ULF Pc5, and EMIC activity prior to the sheath impact. Plasmaspheric hiss and chorus
waves are enhanced during the sheath region, with particularly strong enhancements during the period of extended southward
290 IMF. The ULF Pc5 and EMIC wave powers also increase during the sheath region period and remain enhanced during the
southern portion of the ejecta period. Lower-band chorus waves are strong during the southward portion of the ejecta phase
(see RBSP-B in particular) and there is also some upper band chorus wave activity observed at this time. **The RBSP are
predominantly outside the plasmasphere during the ejecta period, but enhanced plasmaspheric hiss is also occasionally
observed during the ejecta.** The enhanced lower-band chorus and hiss waves persist into the time period of the northern
295 portion of the ejecta. ULF Pc5 wave power weakens during the time period of the northward portion of the ejecta, but stays at
relatively enhanced levels that persist for a few hours after the ejecta trailing edge, while EMIC power decreases to pre-event
levels. After the end of the ICME, chorus wave power declines but weaker hiss continues throughout the rest of the evaluated
time period, consistent with RBSP being mostly inside the plasmasphere. **Very low upper band chorus wave powers are
observed by RBSP-A after the end of the ejecta, but RBSP-B simultaneously observes strong upper band chorus waves.**
300 **We additionally note from Fig. 2 that both RBSP are predominantly on the dayside of the Earth throughout the sheath
and ejecta of this event, with short periods on the nightside.**

3.2 Event 2: June 26 - 30, 2013

The right subplots of Figure 1 shows the conditions in the solar wind, interplanetary magnetic field and geomagnetic field
during Event 2. This ICME also has a rotating magnetic field, but now the field rotation is from North to South (in contrast to
305 the South-North rotation of Event 1). The shock driven by this ICME impacts the Earth on June 27, 2013 at 13:51 UT. It is
a quasi-perpendicular shock with $\theta_{Bn} = 74^\circ$ and magnetosonic Mach number 2.0, i.e. considerably weaker than the shock in
Event 1. The ICME ejecta occurs from June 27, 2013, 02:00 UT to June 29, 2013, 12:00 UT

Prior to the shock, IMF magnitude is low ($B \approx 3$ nT), but the magnetic field strength increases abruptly to ~ 7 nT at the shock impact. The IMF magnitude increases gradually throughout the sheath but remains below 10 nT with strongly fluctuating magnetic field direction. The magnetic field magnitude remains enhanced and relatively constant (~ 11 nT) throughout the ICME ejecta. There is strongly northward ($B_z \sim +10$ nT) magnetic field at the leading edge of the ICME, which rotates southward to reach ~ -10 nT near the midpoint of the ICME. The field remains strongly southward during the latter half of the ICME. In the post-event period, there are large fluctuations in the magnetic field strength and direction for ~ 12 hours before the IMF stabilised at ~ 5 nT, which is slightly elevated when compared to the pre-event IMF strength. The total magnetic field strength and B_z magnitude in the Event 2 ejecta reaches similar maximum values as in Event 1.

The solar wind speed shows a decreasing trend in the pre-event phase, declining from ~ 500 kms^{-1} at the start of the investigated period to ~ 350 kms^{-1} immediately before the shock impact. The shock impact causes an abrupt increase in solar wind speed to ~ 490 kms^{-1} , which is then followed by a steady decrease throughout the sheath and ejecta period. The solar wind speed reaches ~ 350 kms^{-1} near the end of the ejecta period and then increases throughout the post-event period to reach ~ 600 kms^{-1} . The solar wind dynamic pressure is low (< 1 nPa) in the solar wind preceding the ICME and the magnetopause is far from the Earth ($\sim 13R_E$). The dynamic pressure increases at the shock, and peaks at ~ 10 nPa near the end of the sheath region. The magnetopause is compressed from $\sim 13R_E$ to $\sim 10R_E$ at the shock, and then further compresses throughout the time period of the sheath region until it reaches $\sim 8R_E$ immediately prior to the time of ejecta impact. Maximum magnetospheric compression occurs at the time of peak solar wind pressure. During the cloud, there is again considerably lower dynamic pressure than during the sheath region, with several spikes up to ~ 5 nPa. This, along with northward magnetic fields in the leading part of the ejecta, results in rapid outward relaxation of the magnetopause to $\sim 14R_E$. However, the magnetopause is compressed increasingly closer to the Earth during the ejecta period due to increasingly strong southward magnetic fields, finally reaching $\sim 8R_E$ by the end of the ejecta time period. The dynamic pressure remains elevated in the post-event period when compared to pre-event values, but is generally low. The magnetopause position slowly increases in the post-event period, but does not return to its nominal position by the end of the analysed time period.

The plasmopause is initially located at $L \approx 6 - 8R_E$ during the quiet period preceding Event 2, which is similar pre-event location as observed in Event 1. Like in Event 1, the plasmopause is compressed throughout the sheath region. However, the plasmopause remains at $L > 4R_E$ during the sheath region of Event 2, which is more distant from the Earth than seen in Event 1. The plasmopause relaxes during the time period of the northern portion of the ejecta, reaching $L \sim 6R_E$, before being compressed to $L < 4R_E$ during the latter, southern half of the ejecta. Plasmopause recovery is slower in Event 2 than Event 1, likely due to the southward magnetic fields persisting after the trailing edge of the ejecta, and the plasmopause does not return to nominal location within the evaluated time period.

Event 2 is also associated with an intense geomagnetic storm. Geomagnetic activity is quiet before the shock impact, in terms of both Dst and AL, and remains low throughout the sheath region. **There is a minor decrease in Dst at the ejecta leading edge, but it remains close to pre-event levels.** Dst begins to decrease rather steadily **approximately eight hours** after the ejecta leading edge arrives at Earth, reaching a minimum value of -102 nT on June 29, 2013, 07:00 UT, a few hours after the mid-point of the ejecta. This geomagnetic storm is of the same magnitude as the storm caused by Event 1. AL also

decreases during the latter, southward half of the ICME period, fluctuating between -500 nT and -1000 nT. There is a large negative spike in AL coinciding with the time of the ICME trailing edge to ~ -2000 nT. The recovery phase of the storm starts at the arrival time of the ejecta trailing edge and is prolonged due to large IMF fluctuations in the post-ICME period. The AL activity subsides considerably in the recovery phase, showing only weak activity with peak values around -200 nT in the post-event period. Dst activity remains elevated throughout the post-event period.

Figure 2 shows that there are initially very low levels of hiss, ULF Pc5, and EMIC wave activity in Event 2, which is also the case in Event 1. **Both RBSP are inside the plasmopause throughout the pre-event period, so chorus measurements are not available prior to the sheath impact.** The plasmaspheric hiss remains at a constant power throughout the sheath region and northern portion of the ejecta. Chorus wave power is low over this time period in both the upper and lower bands. The ULF Pc5 power is enhanced during the sheath period, while EMIC activity is enhanced for a short period at the sheath-ejecta boundary. The plasmaspheric hiss and chorus waves are enhanced during the southern portion of the ejecta, although this enhancement is less intense than in Event 1. The strongest ULF Pc5 and EMIC power occurs during the southward IMF period in the latter half of the ejecta period. **The RBSP spend approximately half of the ejecta period inside the plasmasphere, and then are predominantly outside the plasmasphere after the ejecta trailing edge.** After the ejecta period, the chorus wave activity remains very low and the plasmaspheric hiss power is similar to pre-event levels. EMIC wave activity declines after the ICME, showing only some a very sporadic enhancement, while ULF Pc5 wave intensity remains elevated. **Unlike Event 1, which had the RBSP predominantly on the dayside of the Earth, the RBSP are chiefly on the nightside of the Earth throughout the time period evaluated in Event 2. We additionally note that the RBSP are largely on the duskside in the latter half of the ejecta, and the MLT asymmetries of chorus waves mean that a significant portion of chorus waves may not be observed by RBSP. However, the strong > 30 keV precipitation at this time (discussed in Section 4.2) is indicative of chorus wave activity from the mid-ejecta until its trailing boundary.**

4 Electron Flux and Precipitation

We will now investigate the changes in electron flux precipitating into the upper atmosphere and the variations in the electron fluxes trapped in the outer Van Allen radiation belt. The variations in trapped and precipitating fluxes during Event 1 are shown in Figures 3 and 4, while Figures 5 and 6 show the electron flux dynamics during Event 2. The colour plots (Figures 3 and 5) show the variations of the precipitating electron flux (upper three subplots) and trapped electron flux (lower four subplots) over time and space during the ICMEs. The median precipitating and trapped fluxes for three selected latitude bands are shown in Figures 4 and 6. Section 2 details the methods and energies / latitudes / L-shell ranges used in this analysis.

4.1 Event 1: 30 December 2015 - 2 January 2016

Figure 3 shows the precipitating electron fluxes determined from POES measurements (Eq. 1) and the trapped electron fluxes in the outer belt measured by the Van Allen Probes. The evaluated time period is from 30 December 2015, 0 UT to 2 January

2016, 24 UT, which encompasses the day prior to the leading shock impact to the day after the impact of the trailing edge of
375 the ejecta of Event 1.

In the pre-ICME phase, there is a moderate, relatively constant level of precipitating flux seen in Figures 6 and 7. The precipitation encompasses the majority of the evaluated latitudes, but most precipitation occurs at high latitudes ($> \sim 60^\circ$). The median precipitation at selected latitude curves in Fig. 4 indeed show that the lowest levels of precipitating flux occur at the lowest latitude band (green dots) and also shows relatively little variation at all energies and latitude bands, although there is
380 some low-latitude variation in the 100 keV and 300 keV populations. The outer radiation belt trapped electron fluxes are also relatively stable prior to the shock impact, seen best in Fig. 3. The source (33.0 keV) electron flux is initially relatively low, particularly at $L \approx 4.0 - 6.0$, and the seed electrons (354 keV) have greater flux at $L > 4.5$ than at $L < 4.5$. The core (1.066 MeV) and ultrarelativistic (3.4 MeV) electron fluxes peak at slightly lower L-shells, at $3.0 \leq L \leq 4.0$ and $3.5 \leq L \leq 4.0$, respectively.

The shock impact does not immediately significantly alter precipitating or trapped electron fluxes at any of the evaluated
385 energies. This is clearly visible in both the colour density plot (Fig. 3) and the median precipitation / flux curves (Fig. 4), which show low variation in electron dynamics for the first half of the time period of sheath region. However, there is considerable variability in electron dynamics during second half of the sheath region, with significant precipitations enhancements and depletions beginning during the mid-sheath when there is strongest magnetospheric compression and extended southward
390 IMF. The > 30 and > 100 keV precipitating electron populations are enhanced at high ($> 63^\circ$) latitudes at the mid-sheath time, although the lower latitude precipitation is not significantly changed in either population. The high latitude enhancement generally intensifies and moves to lower latitudes towards the arrival time of the ejecta leading edge, extending to ($\sim 59^\circ$) immediately prior to shock impact. The enhancement is relatively larger in magnitude for the > 30 keV channel than the > 100 keV channel. However, there is also a decrease in > 30 and > 100 keV precipitation at highest latitudes immediately before the
395 arrival time of the ejecta leading edge, which is particularly clear in the colour map of the > 100 keV population. Also during the mid-sheath time, the > 300 keV precipitation channel is heavily suppressed, with a large, distinct decrease in precipitation that starts at the highest latitudes ($> \sim 67^\circ$). This high-energy precipitation depletion spreads to lower latitudes ($\sim 63^\circ$) and deepens around the time of the time of the transition from the sheath to the ejecta. However, there remains some constant > 300 keV precipitating flux at at lowest evaluated latitudes throughout the sheath region.

Consistent with the precipitation dynamics described above, trapped electron fluxes are relatively stable during the time of
400 the leading part of the sheath and distinctly change during the trailing section. The changes in flux again coincide with the time period of extended southward IMF and magnetopause compression to geostationary orbit. Source electron fluxes show strong enhancements during the time period of the latter portion of the sheath region, particularly at the higher L-shells (latitudes). The seed population in turn remains more stable throughout the sheath time period with some increase in fluxes near the time of the
405 ejecta impact, while core and ultrarelativistic trapped electron fluxes decrease at high L-shell. This decrease in core electron flux is clear but small, with the exception of a deep decrease at the highest L-shell bin ($5.5 < L < 6.0$, see in particular Fig. 3). The ultrarelativistic electron population shows a similar deep decrease at $5.5 < L < 6.0$, and the decrease at lower L-shells is more pronounced than in the core population. These depletions extend throughout the time period of the leading portion of

Electron Precipitation and Flux 30 Dec, 2015 - 02 Jan, 2016

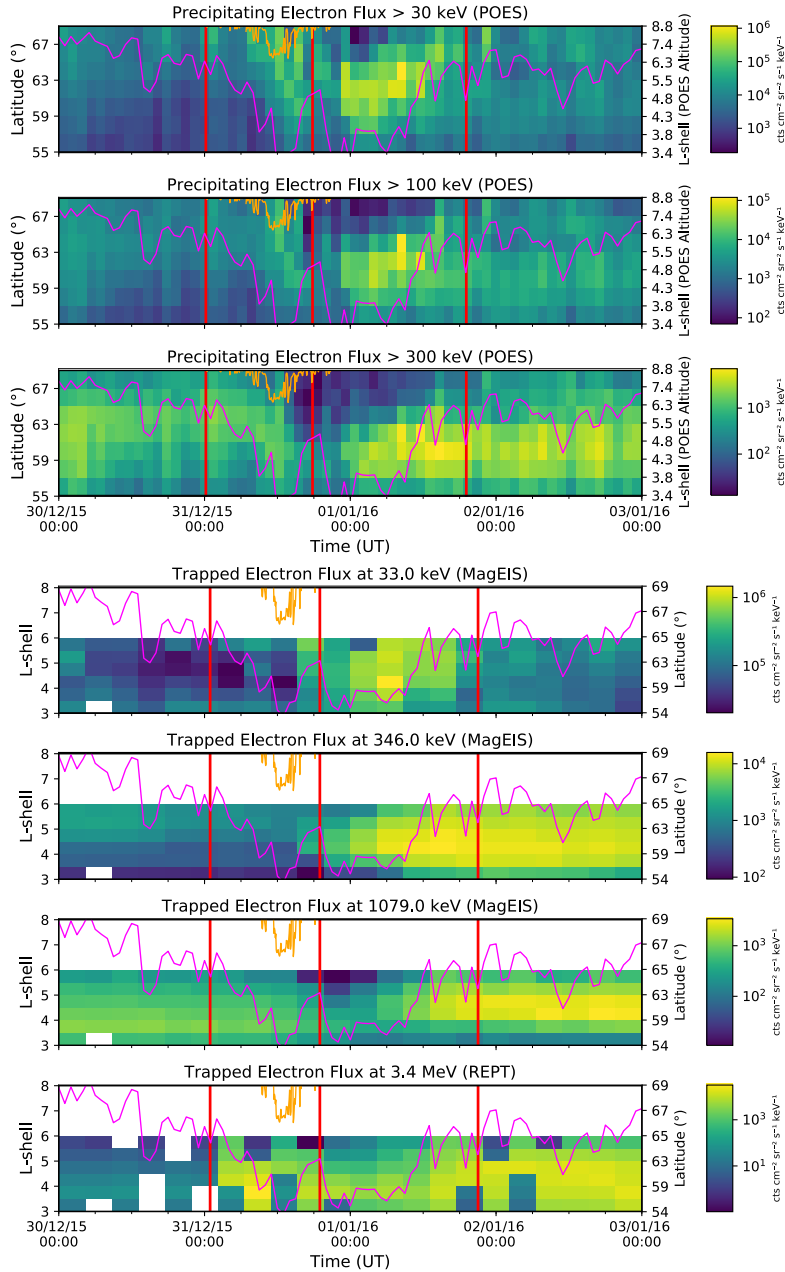


Figure 3. Modified figure and caption. Spatial and temporal variation in the precipitating electron fluxes lost into the atmosphere (upper three subplots) and the trapped electron flux in the outer radiation belt (lower four subplots) observed during Event 1. Fluxes are measured in $\text{cts cm}^{-2} \text{sr}^{-1} \text{s}^{-1} \text{keV}^{-1}$. The red lines show the times of the shock, ICME start, and ICME end, as in Figure 1. **The magenta overlay shows the location of the plasmopause during this event, while the orange overlay shows magnetopause location.** The y-axis on the right of the precipitating flux subplots shows the L-shell at POES altitudes, while the secondary y-axis on the trapped flux subplots shows the geomagnetic latitude where the magnetic field line impacts the Earth (due to the highly elliptical RBSP orbit). Note the different colour scales for each subplot.

Electron Precipitation and Flux 30 Dec, 2015 - 02 Jan, 2016

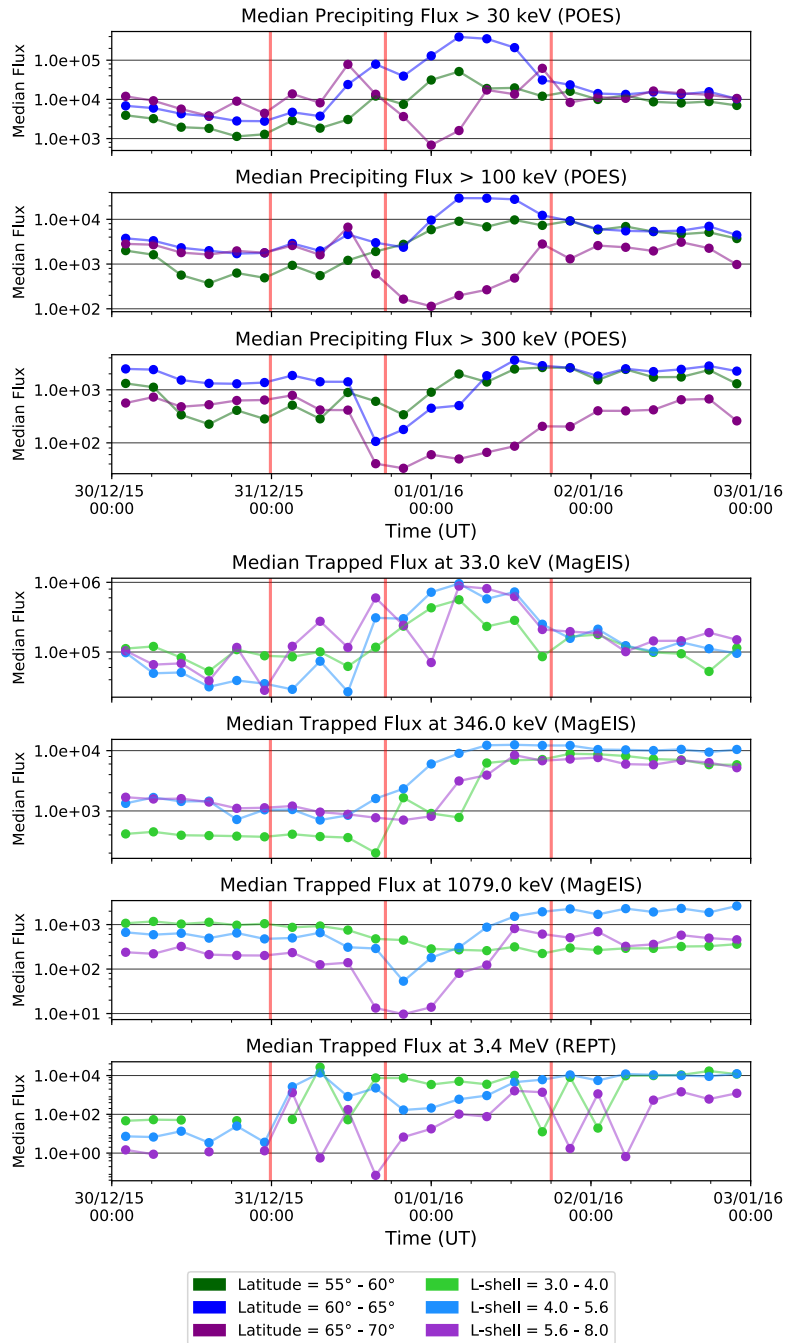


Figure 4. Variation in median trapped and precipitating fluxes during Event 1 at selected latitudes. Median values were calculated over four hour time intervals, and median trapped flux was calculated at L-shell corresponding to the latitude ranges used for precipitation analysis. Fluxes are measured in $\text{cts cm}^{-2} \text{sr}^{-1} \text{s}^{-1} \text{keV}^{-1}$.

the ejecta, although the flux soon recovers at lower L-shell. The depletion in the ultrarelativistic populations extends as low
410 as $L \sim 4.0$ and persists for longer times than that seen for the core population, which is only briefly depleted to a minimum
L-shell of ~ 4.5 . The high-latitude core and ultrarelativistic trapped flux depletions thus coincide with the observed decrease
in high-latitude precipitation fluxes in the > 300 keV channel. We note that the precipitating flux data shows the depletion
extending to higher latitudes than recorded by the RBSP probes, indicating that the trapped flux depletions may extend to
L-shells (latitudes) beyond the RBSP apogee (discussed in Section 2).

415 The strongest latitude/L-shell variations in precipitating and trapped fluxes occur during the ejecta period, as seen in both the
colour density plot and median line plot. Firstly, all POES channels exhibit strong decreases in precipitating flux at the highest
latitudes throughout most of the ejecta time period (purple dots in Fig. 4). As discussed previously, this depletion begins a
few hours before the arrival time of the ejecta leading edge, and is particularly deep and wide in the > 300 keV channel. The
decreased precipitation spreads somewhat in latitude as the ejecta progresses, as shown by Fig. 3. In contrast, mid-latitude
420 precipitation enhances for all channels, with greatest spread of enhanced precipitation at the lowest energies ($\sim 57^\circ - 65^\circ$ in
the > 30 keV channel compared to $\sim 57^\circ - 61^\circ$ for the > 300 keV population). The precipitating flux magnitude is greatest at
the beginning of the ejecta period for the > 30 keV channel, while the higher energy precipitating fluxes enhance as the ejecta
progresses. The precipitating flux in the > 30 keV and > 100 keV channels slightly decreases just prior to the arrival time of the
ejecta trailing edge, which is when the > 300 keV channel precipitation peaks. Overall, each energy channel shows an initial
425 high-latitude depletion that recovers throughout the ejecta time period, and additionally has a strong, coherent mid-latitude
enhancement with energy-dependent timing and duration.

The outer belt electron trapped fluxes also show strong variability and similar overall trends as the changing precipitating
fluxes observed during the ejecta period. For the source and seed populations, trapped flux enhancements begin slightly prior
to the time of ejecta impact, as discussed earlier. Both fluxes enhance greatly over wide L-shell range ($3.0 < L < 5.5$) during
430 the times of the leading part of the ejecta. Only the highest L-shell bin shows a mild decrease in source and seed trapped fluxes.
The source population flux strongly decreases towards the time of the ejecta trailing edge, but the seed electron flux remains
elevated in the latter part of the ejecta period. The core and ultrarelativistic electrons progressively enhance during latter portion
of the ejecta period, following the seed population enhancement. The timing and magnitude of these enhancements are energy
dependent, with lower energy populations being enhanced earlier and to a greater extent than higher energy populations.
435 The peak enhancements for the seed, core, and ultrarelativistic populations occurs at $4.0 < L < 5.5$ ($60^\circ - 63^\circ$), and these
enhancements persist until the end of the evaluated time period. The core and ultrarelativistic fluxes are also strongly depleted
during the leading portion of the ejecta period at high L-shell, as discussed above. This high latitude depletion is most distinct
in the ultrarelativistic population. The concurrent enhancements in precipitation at corresponding latitudes indicate that the
precipitating populations originated from the radiation belts.

440 After the end of the ICME time period, the electron precipitating fluxes stabilises quickly at all energies, returning to a
relatively constant level of precipitation across all latitudes. The magnitude of precipitation in all channels is, however, slightly
higher when compared to the pre-event period, especially at middle latitudes. This is consistent with higher energy electron
fluxes remaining clearly enhanced, which reflects a strong trapped electron population in the belts following the ICME impact

and subsequently allowing for greater precipitation. In contrast, the source electron fluxes show a drastic decrease from the values during the ejecta, although the source fluxes are still slightly greater than before the ICME. The source fluxes remain relatively stable following the ejecta period, likely due to the lack of substorm activity.

4.2 Event 2: 26 - 30 June, 2013

Figure 5 shows the variation in precipitation and trapped electron flux from 26 June 2013, 0 UT to 30 June 2013, 24 UT, encompassing the time period that Event 2 occurred. This event was an ICME with a North-South magnetic field rotation in the ejecta. Prior to the ICME impact, Event 2 exhibits moderate levels of electron precipitation at all evaluated latitudes and energies, similar to Event 1. We again observe that the majority of this quiet-time precipitation occurs at $\sim 63^\circ$ (mid-latitude band, blue dots in Fig. 6). The pre-event electron fluxes also partly show similar L-shell / latitude distribution as in Event 1. We suggest that this is reasonable given that both are "quiet" or "pre-event forcing" conditions. The trapped source electron flux is very low at $4.5 < L < 5.0$ and this region of low flux expands to higher L-shells over time prior to shock impact. The seed, core, and ultrarelativistic populations all have significant flux at L-shells $> 3.5 - 4$, and these fluxes remain relatively stable prior to the shock impact. The peak fluxes in the core and ultrarelativistic populations are now at $4.5 < L < 6.0$.

Neither the precipitating nor the trapped electron fluxes experience major changes due to the shock impact in this event. There are also minimal changes during the period of sheath interaction with the inner magnetosphere, likely due to the lack of sustained southward IMF and minimal geomagnetic activity. Some notable changes occur, however, close to the time period of the sheath - ejecta boundary, which is the period that coincides with the large solar wind dynamic pressure spike and magnetopause compression to $\sim 7.5R_E$. The seed, core, and ultrarelativistic electron populations exhibit a decreasing trend at middle and high latitudes at this time, most visible in the median plot (blue and purple dots, Fig. 6), with greatest depletions taking place in highest energy populations. There are minimal precipitation changes upon shock impact, with a small enhancement in the POES > 30 keV channel and slight depletion in the > 100 keV and > 300 keV channels at the highest latitudes.

There are only small changes in electron precipitation immediately following the ejecta impact, likely due to the northward IMF at the leading edge. The > 30 keV enhancement persists but remains at a low magnitude and is restricted to highest latitudes, and this is also the case for the depletions in the higher energy populations. During the time covering the trailing part of the ejecta, as the IMF rotates southward and geomagnetic activity intensifies, there is however a much stronger variability in electron precipitation. The > 30 keV and > 100 keV POES channels show alternating precipitation increases and decreases, but the general trend is a significant enhancement during the ejecta edge, in particular at mid-latitudes ($60^\circ - 65^\circ$, blue dots in Fig. 6). The color density plot in Fig. 5 further shows that this region of enhanced precipitation widens towards lower latitudes over time. These channels also shows a clear decrease in precipitation flux at the highest latitudes at the same time as the mid-latitude flux enhancement, with the > 100 keV depletion extending over a wider latitude range than the > 30 keV depletion. The > 300 keV channel shows a depletion in precipitating electrons for both the highest and mid latitudes at this time, with the region of low precipitation fluxes extending to lower latitudes over time. At the lowest evaluated latitudes ($55 - 60^\circ$), there is a clear precipitation enhancement towards the end of the ejecta time in the > 300 keV channel, seen clearly in the green dots of Fig. 6.

Electron Precipitation and Flux 26 Jun - 30 Jun, 2013

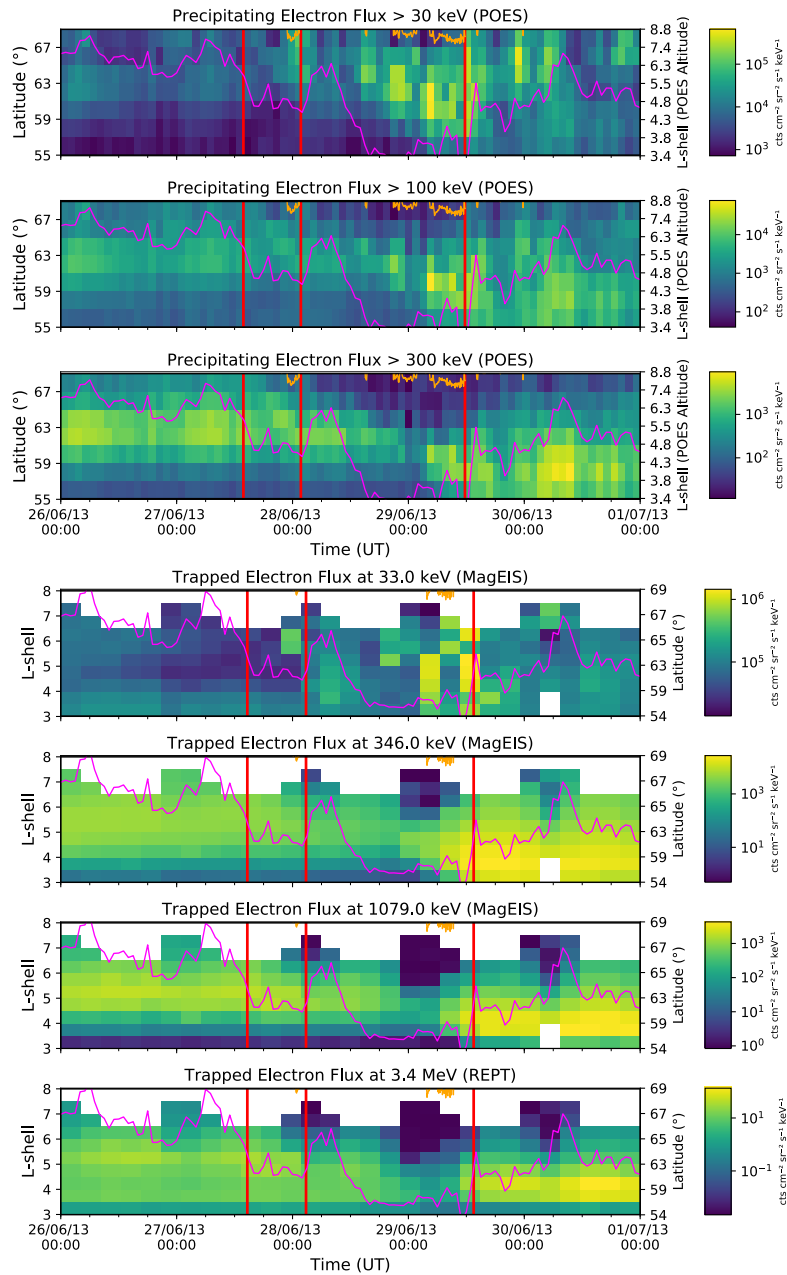


Figure 5. Modified figure and caption. Same as Fig. 3 but for Event 2. Fluxes are measured in $\text{cts cm}^{-2} \text{sr}^{-1} \text{s}^{-1} \text{keV}^{-1}$.

Electron Precipitation and Flux 26 Jun - 30 Jun, 2013

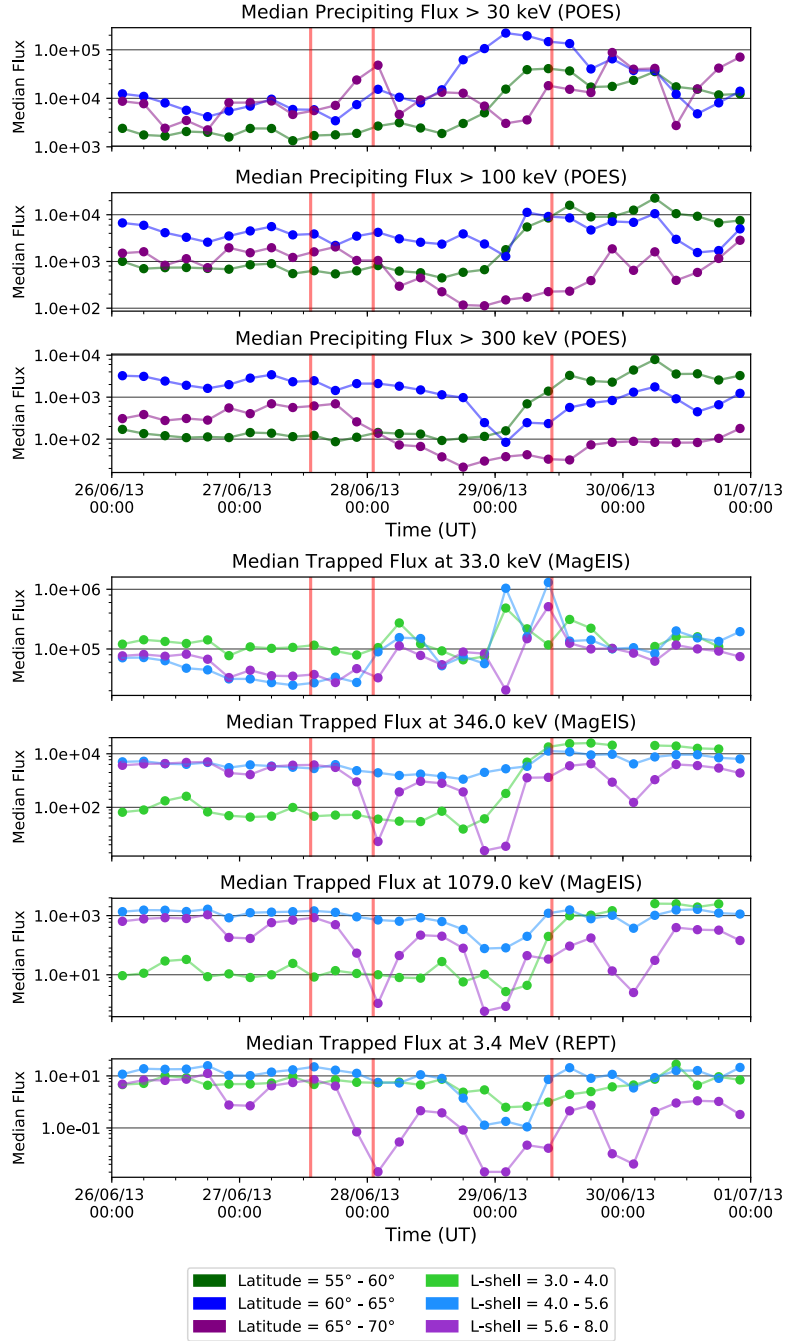


Figure 6. Same as Fig. 4 but for Event 2. Fluxes are measured in $\text{cts cm}^{-2}\text{sr}^{-1}\text{s}^{-1}\text{keV}^{-1}$.

The outer belt trapped electron fluxes also show the most variations during the time period covered by the trailing part of the ejecta. The source trapped electron fluxes at $L > 3$, which are very low during the sheath period as discussed above, clearly enhance at the ejecta onset. The source fluxes experience some temporal and spatial variations during the northern portion of the ejecta period and then intensify more strongly over a wide range of latitudes before the time of the ejecta trailing edge. In contrast to Event 1, this source flux enhancement during the southward portion of the ejecta is not coherent and exhibits large temporal and spatial fluctuations. There is also a source flux depletion that is localised to the highest L-shells. Conversely, all other outer belt electron populations show a constant or slightly depleted flux in the time covering the leading part of the ejecta. At the mid-point of the ejecta, the seed, core, and ultrarelativistic fluxes decrease slightly in the mid L-shell/latitude band, while a strong depletion occurs at the highest latitudes. Populations with the greatest energy are depleted most strongly, and this depletion also extends over the widest L-shell range in highest energy populations. These depletions occur at the time of southward IMF and strong magnetopause compression. Immediately after these depletions, the seed, core, and ultrarelativistic fluxes begin to progressively enhance at lower L-shells ($L = 3.5 - 4.5$). These enhancements are once again energy dependent, with the seed fluxes enhancing earlier and to a greater magnitude than the core or ultrarelativistic populations. These enhancements are consistent with the precipitation signatures during this time, indicating again that these precipitating fluxes originate from the outer radiation belt.

The recovery phase of the storm related to Event 2 starts approximately at the arrival time of the trailing edge of the ejecta, but some geomagnetic activity continues, mostly likely due to the IMF remaining enhanced with fluctuating direction and increasing solar wind speed. The magnitude of the precipitating and trapped fluxes are now generally significantly greater than before the shock impact and exhibit strong spatial variations. The source electron fluxes weaken after a strong enhancement at the time of the ejecta trailing boundary, although source fluxes greater than the pre-event levels. The peak seed and core trapped fluxes occur at lower latitudes/L-shells after the ICME than in the pre-event period, with peaks at $L = 3.5 - 4.5$ ($57^\circ - 63^\circ$). The ultrarelativistic flux is now also strongly peaked at $L = 3.5 - 4.5$ ($57^\circ - 63^\circ$), in contrast to its more spatially uniform distribution prior to the event. We also note that at the highest evaluated L-shells/latitudes, the seed, core, and ultrarelativistic fluxes are significantly lower than the pre-event fluxes. The precipitation is strongest at low- and mid-latitudes in the > 100 keV and > 300 keV channels, while the > 30 keV population is stronger at highest latitudes after the ICME. One significant phenomena observed in the recovery period is the enhanced precipitating fluxes of > 300 keV electrons at $L < 5$, which occurs at the same time and location as a strong seed flux enhancement. The plamsapause is located at $L \sim 5$, so this high energy precipitation enhancement is likely due to the seed population being scattered into the loss cone by plasmaspheric hiss.

5 Discussion

We have studied here the electron response to two different ICME events, examining fluxes that precipitate into the upper atmosphere and fluxes trapped in the outer radiation belt. Both events consisted of a shock and sheath followed by a magnetic cloud. In Event 1, the magnetic field rotated from south to north (SN) within the cloud, while the magnetic cloud in Event 2 had opposite polarity, i.e. the field rotation was from north to south (NS). Both events were associated with an intense

	Sheath		Ejecta, first half		Ejecta, second half		Recovery	
	Event 1	Event 2	Event 1	Event 2	Event 1	Event 2	Event 1	Event 2
Solar wind conditions								
Bs	Fluctuating	Fluctuating	South	North	North	South	Fluctuating	Fluctuating
Magnetopause			Moving outward	Moving inward			Fluctuating	
Pdyn	Max. at sheath-ejecta boundary							
Geomag. activity (Dst)	Strong at boundary	Very low			Recovery		Rapid recovery	Slow recovery
Wave activity								
Chorus		Limited obs.					Rapid recovery	Slow recovery
Hiss								
ULF Pc5								
EMIC		Enhanced at boundary only						
Precipitating flux								
> 30 keV			Mid-latitude enhancement			Mid-latitude enhancement	Rapid recovery	Slow recovery
> 100 keV	Depletion at sheath-ejecta boundary		High latitude depletion			High latitude depletion		
> 300 keV								
Trapped flux								
Source						Fluctuating		
Seed		High L-shell depletion at sheath-ejecta boundary				High L-shell depletion		
Core			High L-shell depletion			High L-shell depletion		
Ultrarelativistic	Fluctuating		High L-shell depletion					

Low / weak activity	Moderate activity	High / strong activity	Increasing intensity / activity	Decreasing intensity / activity
---------------------	-------------------	------------------------	---------------------------------	---------------------------------

Table 1. New table: Summary of selected solar wind conditions, wave activity, and electron flux responses to the two ICMEs. Evaluated time periods are from the sheath impact to ejecta leading edge, ejecta leading edge to ejecta midpoint, ejecta midpoint to ejecta trailing edge, and following the trailing edge of the ejecta. The factors are classified based on if they are low (blue), moderate (yellow), or high (red) levels of constant intensity / activity, or if the intensity / activity levels are increasing (green) or decreasing (purple) over a given time period. Classifications of intensity / activity are relative to that factor / population in a given event, not comparing e.g., flux intensities in one population to intensities in another population.

magnetic storm with similar peak magnitudes (Dst of -110 nT and -102 nT, respectively). Each ICME induced considerable variations in precipitating and trapped electron fluxes, particularly during the time period encompassing the cloud. Both events also resulted in clear changes between pre-event and post-event conditions. However, we found several clear differences in the characteristics of the flux response that could be related to the different magnetic polarity between the investigated clouds.

515 **Table 1 summarises selected solar wind conditions and wave activity during the two events, as well as the key responses of the trapped and precipitating electron populations.**

For both events, the trapped source electron fluxes experienced approximately one order of magnitude increase during the storm main phase that was followed by a considerable weakening as the storm subsided. However, the timing of these variations

with respect to the ICME were highly different. For Event 1, strong enhancements occurred from the time of the mid-sheath
520 onwards and source electrons were present in most L-shells by the peak of the storm (i.e., soon after the arrival of the cloud's
leading edge). These fluxes weakened only a few hours before the time of the cloud's trailing edge. In Event 2, the ejecta
impact resulted in only a small and short-lived increase in source fluxes and the main source enhancement occurred around
the cloud's trailing boundary. Compared to Event 1, Event 2 also caused more localized and periodic enhancements of source
electrons at different L-shells (in particular at mid L-shells). Therefore, the greatest source flux enhancements occurred during
525 the period of southward fields in the magnetic clouds, with an additional smaller enhancement upon the sheath-ejecta transition
in both events.

The two events had also similar overall seed electron flux response: fluxes in this energy range enhanced strongly as a
response to the ICME and the enhancement lasted throughout the investigated post-event period. Some clear differences were
again found in the seed flux response. In Event 1, the low fluxes in the pre-event phase began to enhance in the end of the
530 sheath region. However, in Event 2, the initially significantly greater seed flux at high L-shells were first depleted (up to two
orders of magnitude) and then progressively enhanced and moved to lower L-shells by the end of the cloud. The peak seed
flux enhancements occurred at $L \approx 4 - 4.5$, and $L \approx 3.5 - 4$ for Events 1 and 2 respectively, so seed flux in Event 2 peaked
at slightly lower L-shells. Event 2 also resulted in a significantly larger seed flux enhancement at the lowest L-shells than
occurred in Event 1, with significant flux as low as $L = 3$. The initial wide depletion of seed fluxes and the appearance of
535 fluxes at lower L-shells suggests that genuine changes in the seed population occurred during both events. The persistence of
seed enhancements in both events is significantly different to the behaviour of the source flux, which rapidly weakened in the
storm recovery phase. This suggests slower decay times due to plasmaspheric hiss (order of days, e.g., Meredith et al., 2006;
Summers et al., 2008) and/or continuing acceleration to hundreds of keV energies. In both events, hiss waves were observed
and ULF Pc5 wave power was at higher levels than in the pre-ICME phase throughout the storm recovery. For Event 2, there
540 were also chorus waves present and geomagnetic activity subsided at a slower pace due to the perturbed region after the end
of the magnetic cloud. The longer period of chorus activity in Event 2 could explain the more efficient seed flux enhancement.
Another distinct feature of Event 2 is a strong depletion of seed and source fluxes at the highest L-shells, which is visible
during the sheath – ejecta transition and is more clearly in the end of the ejecta as the storm peaks. This was not observed in
Event 1, but this could be due to the RBSP satellite apogees not covering the highest L-shells during this event. We discuss
545 these depletions in more detail below.

In both events, there were low, constant levels of precipitating flux in all POES energy channels prior to the ICME impact.
These low variations in precipitating fluxes during the pre-event phase are consistent with low geomagnetic activity, which is
supported by the distant magnetopause and lack of significant magnetospheric wave activity. Each event triggered significant
changes in precipitating flux during the sheath and / or ejecta of the ICME. The observed precipitating fluxes from the POES
550 > 30 keV and > 100 keV energy channels roughly followed the variations in source and seed radiation belt populations for both
events. We note, however, that the > 100 keV precipitation enhancement was much more pronounced in Event 1 than in Event
2, and that > 100 keV precipitation enhancement preceded increases in seed fluxes for both events (and even preceded source
fluxes in Event 1). **The precipitating flux enhancement preceding the trapped flux enhancement may be due to increased**

chorus and EMIC wave activity at this time causing greater scattering of the existing lower energy populations into the bounce-loss cone. A different mechanism may have then caused the trapped flux enhancement at a slightly later time.

Although the precipitating fluxes overall followed the trends in source/seed fluxes, they also featured some further differences between two events. For Event 1, strong precipitating fluxes began during the mid-sheath period and quickly spread to lower latitudes, while Event 2 precipitation enhancements started during the middle of the cloud and progressed more gradually in both magnitude and latitude range. These differences can be attributed to the field very abruptly becoming strongly southward at the leading edge of the cloud in Event 1, while there was a more gradual intensification of the southward IMF component in Event 2. For both events, the precipitating fluxes reached the lowest latitudes at approximately the same time as the peak in source flux, and weakened when the storm recovered, returning close to pre-ICME levels. The observed behaviour of precipitating fluxes and trapped source flux during the ejecta is consistent with the results of Turner et al. (2019), a large statistical study that analysed 110 storms during the RBSP era.

During the main phase of the storms, injected source electrons gave rise to lower band chorus waves that effectively precipitated > 30 keV electrons from the belts (e.g., Lam et al., 2010). Therefore, enhanced > 30 keV precipitation arose both from excitation of chorus waves that scattered keV electrons into the loss cone and the presence of a significant radiation belt population available for scattering. These source electrons likely originated primarily from substorm injections or global convection. Chorus waves were indeed observed for both events, particularly during Event 1. In Event 2, the plasmopause was further from Earth, so plasmaspheric hiss likely also made a significant contribution to the scattering. We also note that the close proximity of southward fields in the sheath and cloud for Event 1 were important for the event characteristics. This resulted in a long-lasting and smoother source flux enhancement, and caused enhanced > 30 keV precipitating flux over a larger L-shell/latitude range that continued for the majority of the cloud. For Event 2, NS rotation caused more sporadic enhancements in trapped and precipitating flux that occurred only close to the cloud's trailing boundary. The continued trapped source flux enhancements after the ejecta in Event 1 resulted from mild geomagnetic activity, which is associated with trailing solar wind interacting with the southward fields in the cloud.

The core and ultrarelativistic populations showed significant changes in their peak flux locations and magnitudes during both events, and also exhibited strong depletions at the largest L-shells. The peak fluxes in Event 1 at these energies moved from low ($3.5 < L < 4.5$) to higher ($4.5 < L < 5.5$) L-shells, while the fluxes in Event 2 had exhibited opposite behaviour, shifting from about $5.0 < L < 5.5$ to $3.5 < L < 4.5$. The peak fluxes attained approximately similar magnitudes in both events, but fluxes in Event 2 experienced more variability following the end of the ejecta period, consistent with on-going chorus activity. The strongest core and ultrarelativistic enhancements started earlier with respect to the ICME structure for Event 1, around the time of the middle of the cloud, while Event 2 fluxes enhanced at the cloud's end boundary time. There were progressive enhancements of core and ultrarelativistic fluxes in both events, but this occurred much more rapidly in Event 2 than in Event 1, where the enhancements occurred throughout the ejecta period. Event 1 behaviour is thus consistent with whistler mode chorus waves progressively accelerating seed electrons to MeV energies (Jaynes et al., 2015), and indeed, significant chorus wave activity was present through most of the ICME period. The chorus wave energisation likely worked together with energisation by the inward transport by ULF Pc5 waves (e.g., Jaynes et al., 2018; Ma et al., 2018). This energisation occurred when the

plasmopause was close to Earth and L -shells investigated resided outside the plasmasphere. For Event 2, the inward transport
590 could be particularly important as there was high ULF activity and much weaker chorus waves activity throughout the storm
main phase. ULF wave acceleration has indeed been invoked to cause fast energisation of electrons to relativistic energies
at wide L -ranges, including also at L -shells as low as $L \sim 3$ (e.g., Jaynes et al., 2018; Kanekal et al., 1999; Mathie and
Mann, 2001; Rae et al., 2019). The peak flux region at $L = 3.5$ was indeed just outside the plasmopause during the end of
the cloud, so this is one possible explanation for the rapid core and ultrarelativistic enhancements observed at the end of the
595 magnetic cloud. In Event 1, the magnetopause was located far from Earth in the latter portion of the magnetic cloud and
then returned to its initial location after the ejecta. This magnetosphere expansion combined with the extremely low dynamic
pressure throughout the ejecta allowed the radiation belts to expand outwards, therefore enabling a shift in high energy fluxes to
higher L -shell. Conversely, there was elevated dynamic pressure in the ejecta of Event 2, particularly near the trailing edge, with
significant spikes of higher pressure. This meant that the Event 2 magnetopause was strongly compressed during the latter half
600 of the ejecta and then remained compressed after the ejecta when compared to its pre-event location. This inward motion of the
magnetopause is reflected by the inward motion of peak high energy fluxes in Event 2. The relationship between magnetopause
location and peak core and ultrarelativistic fluxes in the recovery stage of these two events highlights the importance of the
dynamic pressure in determining the radiation belt location.

The seed, core, and ultrarelativistic electron fluxes experienced a strong, high latitude depletion during the southern portion
605 of the cloud for both events. For Event 1, the depletion started already during the sheath and extended to lower latitudes with
increasing energy during the ejecta period. The precipitating fluxes at all energy channels showed similarly wide depletions
at the highest latitudes during the time of the ejecta. This suggests that depletions in outer belt fluxes extended to even higher
 L -shells than captured by the RBSP orbit (at least up to $L \sim 8$). These high-latitude precipitating flux measurements give
particularly useful insight into the outer regions of the radiation belt in Event 1 when the RBSP apogee was at lower L -shell.
610 Magnetopause shadowing is the most probable cause of this high-latitude depletion (Bortnik et al., 2006; Turner et al., 2014)
as there was strong magnetopause compression/erosion during the period of southward ejecta in both events. In Event 2, the
short-lived depletion at high L -shells/latitudes upon ejecta impact is also presumably due to magnetopause shadowing, as
strong magnetopause compression occurred at this time. Losses due to magnetopause shadowing were likely enhanced by the
Dst effect, as the observed depletions coincided with the storm main phase/peak (e.g., Gokani et al., 2019; Turner et al., 2014).
615 The energy-dependent spatial variations in flux depletions are likely due to inward radial gradients causing MeV electron loss
at lower L -shell via outward radial diffusion (e.g., Bortnik et al., 2006; Turner et al., 2013). Radial gradients can be induced
by losses at high L -shell, which may have occurred above the RBSP apogee. Losses at lower L -shells are likely related to
mechanisms other than magnetopause shadowing. These low L -shell depletions mainly occurred during the storm main phase,
but also occurred at the time of sheath-ejecta boundary. They could therefore be caused by a combination of scattering into the
620 bounce-loss cone due to wave-particle interactions (most likely due to EMIC waves, e.g., Turner et al., 2019; Yuan et al., 2013),
outward radial diffusion by Pc5 waves, and Dst effect transporting electrons further out to locations where they may undergo
magnetopause shadowing. The EMIC and Pc5 wave powers were indeed high for both events at these times, indicating that
interactions with these waves may have significantly impacted radiation belt electron dynamics.

In each event, we observed that the > 300 keV precipitating fluxes roughly follow the variations in the seed, core, and ultra-relativistic populations. The location of > 300 keV precipitating flux corresponds to the location of peak high-energy trapped flux, implying that the MeV radiation belt populations at these locations provides a source for > 300 keV precipitation. The timing of changes matches best with that of the core and ultrarelativistic fluxes, indicating that these populations experienced losses via precipitation during the southern portion of the magnetic cloud. Some recent studies indeed suggest that only a very small fraction of radiation belt electrons would be subject to losses into the upper atmosphere (e.g., $< 0.5\%$ of total losses of relativistic fluxes at $3.0 < L < 4.5$ on 17/3/2015 were due to precipitation, Gokani et al., 2019). If this is the case in these two events, it implies that the losses via enhanced precipitation would be outweighed by the gains in the trapped radiation belt populations during the ICMEs that were discussed above.

6 Summary

This paper highlights the similarities and differences in the electron response to two ICMEs with magnetic clouds of opposite polarities. Both events resulted in similar overall changes in the source, seed, core, and ultrarelativistic trapped populations of the outer radiation belt, affecting the magnitude and location of these fluxes. However, significant differences in the electron response occurred during the sheath and ejecta periods of the two events. This implies that different key energisation mechanisms acted during the events and that a given electron population may have experienced different enhancement mechanisms in each event. These differences included the timing of trapped / precipitating flux variations with respect to the ICME structures and the coherence of flux enhancements / depletions. The location of the southward field in the magnetic cloud is a key factor associated with these differences, and southward fields within the sheath region and disturbance region after the cloud are likely also significant. The temporal profile of the southward field component likely also plays a role, as there was a sharp southward turn at the leading edge of the SN-cloud versus a smooth rotation to the southernmost field for NS-type cloud. Another significant factor in the electron response is the magnetopause location and dynamic pressure during the sheath and ejecta of the two events. We also emphasize that the POES precipitating flux data roughly reflected the changes in the outer belt trapped electron fluxes at corresponding energies and locations, as recorded by the RBSP. These precipitation data provide insight into the changes in trapped radiation belt fluxes, allowing for estimation of variations occurring at L-shells beyond the RBSP apogee and providing greater spatial and temporal resolution of the trapped flux variations in the outer radiation belt.

Data availability. All RBSP-ECT data are publicly available at the website <http://www.RBSP-ect.lanl.gov/>, and all RBSP-EMFISIS data are publicly available at the website <https://emfisis.physics.uiowa.edu> Processed POES data was obtained through the PROSPECT project (321440, Academy of Finland, Timo Asikainen). GOES data was obtained from the website <https://www.ngdc.noaa.gov/30stp/satellite/goes/index.html>. Wind and OMNI data were obtained from CDAWeb, <https://cdaweb.gsfc.nasa.gov/index.html/>. Dst data are publically available from the website <http://wdc.kugi.kyoto-u.ac.jp/>. ICME times were obtained from the Cane and Richardson online database <http://www.srl.caltech.edu/ACE/ASC/DATA/level3/icmetable2.htm>.

655 *Author contributions.* HG carried out the data analysis, prepared the plots, and interpreted the results under the supervision of EK and AO. TA provided processed POES data. TA and CR assisted in analysis and interpretation of the POES data. MK carried out the wave analysis. MP participated in interpreting the results and commented the manuscript. HG prepared the manuscript with contributions from all authors.

Competing interests. The authors declare that they have no conflicts of interest.

Acknowledgements. The results presented here have been achieved under the framework of the Finnish Centre of Excellence in Research of Sustainable Space (FORESAIL; Academy of Finland grant numbers 312390 and 312351), which we gratefully acknowledge. The work of TA is supported by the Academy of Finland grant 321440. The work of MP is supported by the European Research Council Consolidator grant 682068-PRESTISSIMO and the Academy of Finland grant 309937. The work of EK has received funding from the European Research Council (ERC) under the European Union's Horizon 2020 research and innovation programme (ERC-COG 724391). EK Kilpua acknowledges Academy of Finland project SMASH no. 310445. Processing and analysis of the ECT, MagEIS and REPT data was supported by Energetic Particle, Composition, and Thermal Plasma (RBSP-ECT) investigation funded under NASA's Prime contract no. NAS5-01072. We acknowledge H. Spence and G. Reeves for the ECT data, B. Blake for the MagEIS data and D. Baker for the REPT data. We are also thankful to the Van Allen Probes, POES, GOES, Wind and OMNI teams for making their data publicly available.

References

- Agapitov, O., Artemyev, A., Krasnoselskikh, V., Khotyaintsev, Y. V., Mourenas, D., Breuillard, H., Balikhin, M., and Rolland, G.: Statistics
670 of whistler mode waves in the outer radiation belt: Cluster STAFF-SA measurements, *Journal of Geophysical Research: Space Physics*,
118, 3407–3420, <https://doi.org/10.1002/jgra.50312>, <https://agupubs.onlinelibrary.wiley.com/doi/abs/10.1002/jgra.50312>, 2013.
- Allison, H. J., Horne, R. B., Glauert, S. A., and Zanna, G. D.: The magnetic local time distribution of energetic electrons in the radiation
belt region, *Journal of Geophysical Research: Space Physics*, 122, 8108–8123, <https://doi.org/10.1002/2017JA024084>, <https://agupubs.onlinelibrary.wiley.com/doi/abs/10.1002/2017JA024084>, 2017.
- 675 Asikainen, T.: Calibrated and corrected POES/MEPED energetic particle observations, in: *The ESPAS e-infrastructure: Access to data
in near-Earth space*, edited by A., Belehaki, M. Hapgood and J. Watermann, EDP Sciences, pp. 57–69, EDP Open, London, UK,
<https://doi.org/10.1051/978-2-7598-1949-2>, 2017.
- Asikainen, T.: New Homogeneous Composite Of Energetic Electron Fluxes From POES: 2. Intercalibration of SEM-1 and SEM-2, *Journal of
Geophysical Research: Space Physics*, 124, 5761–5782, <https://doi.org/10.1029/2019JA026699>, [https://agupubs.onlinelibrary.wiley.com/](https://agupubs.onlinelibrary.wiley.com/doi/abs/10.1029/2019JA026699)
680 [doi/abs/10.1029/2019JA026699](https://doi.org/10.1029/2019JA026699), 2019.
- Asikainen, T. and Mursula, K.: Recalibration of NOAA/MEPED energetic proton measurements, *J. Atmos. Solar-Terrestrial Phys.*, 73, 335–
347, doi:10.1016/j.jastp.2009.12.011, 2011.
- Asikainen, T. and Mursula, K.: Correcting the NOAA/MEPED energetic electron fluxes for detector efficiency and proton contamination, *J.
Geophys. Res.*, 118, 6500–6510, <https://doi.org/10.1002/jgra.50584>, 2013.
- 685 Asikainen, T., Mursula, K., and Maliniemi, V.: Correction of detector noise and recalibration of NOAA/MEPED energetic proton fluxes, *J.
Geophys. Res.*, 117, A09204, doi:10.1029/2012JA017593, 2012.
- Baker, D., Kanekal, S., Hoxie, V., Batiste, S., Bolton, M., Li, X., Elkington, S., Monk, S., Reukauf, R., Steg, S., Westfall, J., Belting, C.,
Bolton, B., Braun, D., Cervelli, B., Hubbell, K., Kien, M., Knappmiller, S., Wade, S., and Friedel, R.: The Relativistic Electron-Proton
Telescope (REPT) Instrument on Board the Radiation Belt Storm Probes (RBSP) Spacecraft: Characterization of Earth's Radiation Belt
690 High-Energy Particle Populations, *Space Science Reviews*, 179, <https://doi.org/10.1007/s11214-012-9950-9>, 2012.
- Baker, D. N., Erickson, P. J., Fennell, J. F., Foster, J. C., Jaynes, A. N., and Verronen, P. T.: Space Weather Effects in the Earth's Radiation
Belts, *Space Sci. Rev.*, 214, 17, <https://doi.org/10.1007/s11214-017-0452-7>, 2018.
- Bingham, S. T., Mouikis, C. G., Kistler, L. M., Paulson, K. W., Farrugia, C. J., Huang, C. L., Spence, H. E., Reeves, G. D., and Kletzing,
C.: The Storm Time Development of Source Electrons and Chorus Wave Activity During CME- and CIR-Driven Storms, *Journal of
695 Geophysical Research: Space Physics*, 124, 6438–6452, <https://doi.org/10.1029/2019JA026689>, [https://agupubs.onlinelibrary.wiley.com/](https://agupubs.onlinelibrary.wiley.com/doi/abs/10.1029/2019JA026689)
[doi/abs/10.1029/2019JA026689](https://doi.org/10.1029/2019JA026689), 2019.
- Blake, J., Carranza, P., Claudepierre, S., Clemmons, J., Jr, W., Dotan, Y., Fennell, J., Fuentes, F., Galvan, R., George, J., Henderson, M.,
Lalic, M., Lin, A., Looper, M., Mabry, D., Mazur, J., Mccarthy, B., Nguyen, C., O'Brien, T., and Zakrzewski, M.: The Magnetic Elec-
tron Ion Spectrometer (MagEIS) instruments aboard the Radiation Belt Storm Probe (RBSP) spacecraft, *Space Science Reviews*, 179,
700 <https://doi.org/10.1007/s11214-013-9991-8>, 2013.
- Blum, L. W., Artemyev, A., Agapitov, O., Mourenas, D., Boardsen, S., and Schiller, Q.: EMIC Wave-Driven Bounce Resonance
Scattering of Energetic Electrons in the Inner Magnetosphere, *Journal of Geophysical Research (Space Physics)*, 124, 2484–2496,
<https://doi.org/10.1029/2018JA026427>, 2019.

- 705 Bortnik, J., Thorne, R. M., O'Brien, T. P., Green, J. C., Strangeway, R. J., Shprits, Y. Y., and Baker, D. N.: Observation of two distinct, rapid loss mechanisms during the 20 November 2003 radiation belt dropout event, *Journal of Geophysical Research: Space Physics*, 111, <https://doi.org/10.1029/2006JA011802>, <https://agupubs.onlinelibrary.wiley.com/doi/abs/10.1029/2006JA011802>, 2006.
- Bothmer, V. and Schwenn, R.: The structure and origin of magnetic clouds in the solar wind, *Annales Geophysicae*, 16, 1–24, <https://doi.org/10.1007/s00585-997-0001-x>, 1998.
- 710 Boyd, A. J., Spence, H. E., Huang, C.-L., Reeves, G. D., Baker, D. N., Turner, D. L., Claudepierre, S. G., Fennell, J. F., Blake, J. B., and Shprits, Y. Y.: Statistical properties of the radiation belt seed population, *Journal of Geophysical Research: Space Physics*, 121, 7636–7646, <https://doi.org/10.1002/2016JA022652>, <https://agupubs.onlinelibrary.wiley.com/doi/abs/10.1002/2016JA022652>, 2016.
- Burlaga, L., Sittler, E., Mariani, F., and Schwenn, R.: Magnetic loop behind an interplanetary shock: Voyager, Helios, and IMP 8 observations, *J. Geophys. Res.*, 86, 6673–6684, <https://doi.org/10.1029/JA086iA08p06673>, 1981.
- 715 Burtis, W. J. and Helliwell, R. A.: Banded chorus—A new type of VLF radiation observed in the magnetosphere by OGO 1 and OGO 3, *J. Geophys. Res.*, 74, 3002, <https://doi.org/10.1029/JA074i011p03002>, 1969.
- Cattell, C. A., Breneman, A. W., Thaller, S. A., Wygant, J. R., Kletzing, C. A., and Kurth, W. S.: Van Allen Probes observations of unusually low frequency whistler mode waves observed in association with moderate magnetic storms: Statistical study, *Geophys. Res. Lett.*, 42, 7273–7281, <https://doi.org/10.1002/2015GL065565>, 2015.
- 720 Clilverd, M. A., Rodger, C. J., and Ulich, T.: The importance of atmospheric precipitation in storm-time relativistic electron flux drop outs, *Geophysical Research Letters*, 33, <https://doi.org/10.1029/2005GL024661>, <https://agupubs.onlinelibrary.wiley.com/doi/abs/10.1029/2005GL024661>, 2006.
- 725 Clilverd, M. A., Rodger, C. J., Millan, R. M., Sample, J. G., Kokorowski, M., McCarthy, M. P., Ulich, T., Raita, T., Kavanagh, A. J., and Spanswick, E.: Energetic particle precipitation into the middle atmosphere triggered by a coronal mass ejection, *Journal of Geophysical Research: Space Physics*, 112, <https://doi.org/10.1029/2007JA012395>, <https://agupubs.onlinelibrary.wiley.com/doi/abs/10.1029/2007JA012395>, 2007.
- Douma, E., Rodger, C., Blum, L., and Clilverd, M.: Occurrence characteristics of relativistic electron microbursts from SAMPEX observations: Occurrence of relativistic microbursts, *Journal of Geophysical Research: Space Physics*, 122, <https://doi.org/10.1002/2017JA024067>, 2017.
- 730 Fenrich, F. R. and Luhmann, J. G.: Geomagnetic response to magnetic clouds of different polarity, *Geophys. Res. Lett.*, 25, 2999–3002, <https://doi.org/10.1029/98GL51180>, 1998.
- Gokani, S. A., Kosch, M., Clilverd, M., Rodger, C. J., and Sinha, A. K.: What Fraction of the Outer Radiation Belt Relativistic Electron Flux at L = 3–4.5 Was Lost to the Atmosphere During the Dropout Event of the St. Patrick's Day Storm of 2015?, *Journal of Geophysical Research: Space Physics*, 124, 9537–9551, <https://doi.org/10.1029/2018JA026278>, <https://agupubs.onlinelibrary.wiley.com/doi/abs/10.1029/2018JA026278>, 2019.
- 735 Grandin, M., Kero, A., Partamies, N., McKay, D., Whiter, D., Kozlovsky, A., and Miyoshi, Y.: Observation of pulsating aurora signatures in cosmic noise absorption data, *Geophys. Res. Lett.*, 44, 5292–5300, <https://doi.org/10.1002/2017GL073901>, 2017.
- Hargreaves, J., Birch, M., and Evans, D.: On the fine structure of medium energy electron fluxes in the auroral zone and related effects in the ionospheric D-region, *Annales Geophysicae*, 28, <https://doi.org/10.5194/angeo-28-1107-2010>, 2010.
- 740 Hartley, D. P., Kletzing, C. A., Santolík, O., Chen, L., and Horne, R. B.: Statistical Properties of Plasmaspheric Hiss From Van Allen Probes Observations, *Journal of Geophysical Research (Space Physics)*, 123, 2605–2619, <https://doi.org/10.1002/2017JA024593>, 2018.

- Hendry, A., Rodger, C., and Clilverd, M.: Evidence of sub-MeV EMIC-driven electron precipitation: SUB-MEV EMIC PRECIPITATION, *Geophysical Research Letters*, 44, <https://doi.org/10.1002/2016GL071807>, 2017.
- 745 Huttunen, K. E. J., Schwenn, R., Bothmer, V., and Koskinen, H. E. J.: Properties and geoeffectiveness of magnetic clouds in the rising, maximum and early declining phases of solar cycle 23, *Annales Geophysicae*, 23, 625–641, <https://doi.org/10.5194/angeo-23-625-2005>, 2005.
- Jaynes, A. N., Baker, D. N., Singer, H. J., Rodriguez, J. V., Loto'aniu, T. M., Ali, A. F., Elkington, S. R., Li, X., Kanekal, S. G., Claudepierre, S. G., Fennell, J. F., Li, W., Thorne, R. M., Kletzing, C. A., Spence, H. E., and Reeves, G. D.: Source and seed populations for relativistic electrons: Their roles in radiation belt changes, *Journal of Geophysical Research: Space Physics*, 120, 7240–7254, <https://doi.org/10.1002/2015JA021234>, <https://agupubs.onlinelibrary.wiley.com/doi/abs/10.1002/2015JA021234>, 2015.
- 750 Jaynes, A. N., Ali, A. F., Elkington, S. R., Malaspina, D. M., Baker, D. N., Li, X., Kanekal, S. G., Henderson, M. G., Kletzing, C. A., and Wygant, J. R.: Fast Diffusion of Ultrarelativistic Electrons in the Outer Radiation Belt: 17 March 2015 Storm Event, *Geophys. Res. Lett.*, 45, 10,874–10,882, <https://doi.org/10.1029/2018GL079786>, 2018.
- Kalliokoski, M., Kilpua, E. K. J., Osamane, A., Turner, D., Jaynes, A., Turc, L., George, H., and Palmroth, M.: Outer radiation belt and inner magnetospheric response to sheath regions of coronal mass ejections: A statistical analysis, *Annales Geophysicae*, 2019.
- 755 Kanekal, S. G., Baker, D. N., Blake, J. B., Klecker, B., Mewaldt, R. A., and Mason, G. M.: Magnetospheric response to magnetic cloud (coronal mass ejection) events: Relativistic electron observations from SAMPEX and Polar, *J. Geophys. Res.*, 104, 24 885–24 894, <https://doi.org/10.1029/1999JA900239>, 1999.
- Kavanagh, A. J., Cobbett, N., and Kirsch, P.: Radiation Belt Slot Region Filling Events: Sustained Energetic Precipitation Into the Mesosphere, *Journal of Geophysical Research (Space Physics)*, 123, 7999–8020, <https://doi.org/10.1029/2018JA025890>, 2018.
- 760 Kilpua, E., Koskinen, H. E. J., and Pulkkinen, T. I.: Coronal mass ejections and their sheath regions in interplanetary space, *Living Reviews in Solar Physics*, 14, 5, <https://doi.org/10.1007/s41116-017-0009-6>, 2017.
- Kilpua, E. K. J., Li, Y., Luhmann, J. G., Jian, L. K., and Russell, C. T.: On the relationship between magnetic cloud field polarity and geoeffectiveness, *Annales Geophysicae*, 30, 1037–1050, <https://doi.org/10.5194/angeo-30-1037-2012>, 2012.
- 765 Kilpua, E. K. J., Hietala, H., Turner, D. L., Koskinen, H. E. J., Pulkkinen, T. I., Rodriguez, J. V., Reeves, G. D., Claudepierre, S. G., and Spence, H. E.: Unraveling the drivers of the storm time radiation belt response, *Geophys. Res. Lett.*, 42, 3076–3084, <https://doi.org/10.1002/2015GL063542>, 2015a.
- Kilpua, E. K. J., Lumme, E., Andreeva, K., Isavnin, A., and Koskinen, H. E. J.: Properties and drivers of fast interplanetary shocks near the orbit of the Earth (1995–2013), *Journal of Geophysical Research (Space Physics)*, 120, 4112–4125, <https://doi.org/10.1002/2015JA021138>, 2015b.
- 770 Kim, H.-J. and Chan, A. A.: Fully adiabatic changes in storm time relativistic electron fluxes, *J. Geophys. Res.*, 102, 22 107–22 116, <https://doi.org/10.1029/97JA01814>, 1997.
- Kletzing, C. A., Kurth, W. S., Acuna, M., MacDowall, R. J., Torbert, R. B., Averkamp, T., Bodet, D., Bounds, S. R., Chutter, M., Connerney, J., Crawford, D., Dolan, J. S., Dvorsky, R., Hospodarsky, G. B., Howard, J., Jordanova, V., Johnson, R. A., Kirchner, D. L., Mokrzycki, B., Needell, G., Odom, J., Mark, D., Pfaff, R., Phillips, J. R., Piker, C. W., Remington, S. L., Rowland, D., Santolik, O., Schnurr, R., Sheppard, D., Smith, C. W., Thorne, R. M., and Tyler, J.: The Electric and Magnetic Field Instrument Suite and Integrated Science (EMFISIS) on RBSP, *Space Sci. Rev.*, 179, 127–181, <https://doi.org/10.1007/s11214-013-9993-6>, 2013.
- Koons, H. C. and Roeder, J. L.: A survey of equatorial magnetospheric wave activity between 5 and 8 R_E , *Planet. Space Sci.*, 38, 1335–1341, [https://doi.org/10.1016/0032-0633\(90\)90136-E](https://doi.org/10.1016/0032-0633(90)90136-E), 1990.

- 780 Korth, H., Thomsen, M. F., Borovsky, J. E., and McComas, D. J.: Plasma sheet access to geosynchronous orbit, *Journal of Geophysical Research: Space Physics*, 104, 25 047–25 061, <https://doi.org/10.1029/1999JA900292>, <https://agupubs.onlinelibrary.wiley.com/doi/abs/10.1029/1999JA900292>, 1999.
- Lam, M. M., Horne, R. B., Meredith, N. P., Glauert, S. A., Moffat-Griffin, T., and Green, J. C.: Origin of energetic electron precipitation >30 keV into the atmosphere, *Journal of Geophysical Research (Space Physics)*, 115, A00F08, <https://doi.org/10.1029/2009JA014619>, 2010.
- 785 Li, H., Yuan, Z., Yu, X., Huang, S., Wang, D., Wang, Z., Qiao, Z., and Wygant, J. R.: The enhancement of cosmic radio noise absorption due to hiss-driven energetic electron precipitation during substorms, *Journal of Geophysical Research (Space Physics)*, 120, 5393–5407, <https://doi.org/10.1002/2015JA021113>, 2015.
- Li, W., Thorne, R. M., Angelopoulos, V., Bortnik, J., Cully, C. M., Ni, B., LeContel, O., Roux, A., Auster, U., and Magnes, W.: Global distribution of whistler-mode chorus waves observed on the THEMIS spacecraft, *Geophysical Research Letters*, 36, <https://doi.org/10.1029/2009GL037595>, <https://agupubs.onlinelibrary.wiley.com/doi/abs/10.1029/2009GL037595>, 2009.
- 790 Li, X., Baker, D. N., Temerin, M., Cayton, T. E., Reeves, E. G. D., Christensen, R. A., Blake, J. B., Looper, M. D., Nakamura, R., and Kanekal, S. G.: Multisatellite observations of the outer zone electron variation during the November 3–4, 1993, magnetic storm, *J. Geophys. Res.*, 102, 14 123–14 140, <https://doi.org/10.1029/97JA01101>, 1997.
- Ma, Q., Li, W., Bortnik, J., Thorne, R. M., Chu, X., Ozeke, L. G., Reeves, G. D., Kletzing, C. A., Kurth, W. S., Hospodarsky, G. B., Engebretson, M. J., Spence, H. E., Baker, D. N., Blake, J. B., Fennell, J. F., and Claudepierre, S. G.: Quantitative Evaluation of Radial
- 795 Diffusion and Local Acceleration Processes During GEM Challenge Events, *Journal of Geophysical Research (Space Physics)*, 123, 1938–1952, <https://doi.org/10.1002/2017JA025114>, 2018.
- Maliniemi, V., Asikainen, T., Mursula, K., and Seppälä, A.: QBO-dependent relation between electron precipitation and wintertime surface temperature, *J. Geophys. Res.*, 118, <https://doi.org/10.1002/jgrd.50518>, 2013.
- Mann, I. R., Lee, E. A., Claudepierre, S. G., Fennell, J. F., Degeling, A., Rae, I. J., Baker, D. N., Reeves, G. D., Spence, H. E., Ozeke, L. G.,
- 800 Rankin, R., Milling, D. K., Kale, A., Friedel, R. H. W., and Honary, F.: Discovery of the action of a geophysical synchrotron in the Earth’s Van Allen radiation belts, *Nature Communications*, 4, 2795, <https://doi.org/10.1038/ncomms3795>, 2013.
- Mann, I. R., Ozeke, L. G., Murphy, K. R., Claudepierre, S. G., Turner, D. L., Baker, D. N., Rae, I. J., Kale, A., Milling, D. K., Boyd, A. J., Spence, H. E., Reeves, G. D., Singer, H. J., Dimitrakoudis, S., Daglis, I. A., and Honary, F.: Explaining the dynamics of the ultra-relativistic third Van Allen radiation belt, *Nature Physics*, 12, 978–983, <https://doi.org/10.1038/nphys3799>, 2016.
- 805 Mathie, R. A. and Mann, I. R.: On the solar wind control of Pc5 ULF pulsation power at mid-latitudes: Implications for MeV electron acceleration in the outer radiation belt, *J. Geophys. Res.*, 106, 29 783–29 796, <https://doi.org/10.1029/2001JA000002>, 2001.
- Meredith, N. P., Thorne, R. M., Horne, R. B., Summers, D., Fraser, B. J., and Anderson, R. R.: Statistical analysis of relativistic electron energies for cyclotron resonance with EMIC waves observed on CRRES, *Journal of Geophysical Research (Space Physics)*, 108, 1250, <https://doi.org/10.1029/2002JA009700>, 2003.
- 810 Meredith, N. P., Horne, R. B., Glauert, S. A., Thorne, R. M., Summers, D., Albert, J. M., and Anderson, R. R.: Energetic outer zone electron loss timescales during low geomagnetic activity, *Journal of Geophysical Research (Space Physics)*, 111, A05212, <https://doi.org/10.1029/2005JA011516>, 2006.
- Meredith, N. P., Horne, R. B., Sicard-Piet, A., Boscher, D., Yearby, K. H., Li, W., and Thorne, R. M.: Global model of lower band and upper band chorus from multiple satellite observations, *Journal of Geophysical Research: Space Physics*, 117, <https://doi.org/10.1029/2012JA017978>, <https://agupubs.onlinelibrary.wiley.com/doi/abs/10.1029/2012JA017978>, 2012.
- 815

- O'Brien, T. P. and Moldwin, M. B.: Empirical plasmopause models from magnetic indices, *Geophysical Research Letters*, 30, <https://doi.org/10.1029/2002GL016007>, <https://agupubs.onlinelibrary.wiley.com/doi/abs/10.1029/2002GL016007>, 2003.
- Osmane, A., Wilson, III, L. B., Blum, L., and Pulkkinen, T. I.: On the Connection between Microbursts and Nonlinear Electronic Structures in Planetary Radiation Belts, *Astrophys. J.*, 816, 51, <https://doi.org/10.3847/0004-637X/816/2/51>, 2016.
- 820 Partamies, N., Whiter, D., Kadokura, A., Kauristie, K., Nesse Tyssøy, H., Massetti, S., Stauning, P., and Raita, T.: Occurrence and average behavior of pulsating aurora, *Journal of Geophysical Research (Space Physics)*, 122, 5606–5618, <https://doi.org/10.1002/2017JA024039>, 2017.
- Rae, I. J., Murphy, K. R., Watt, C. E. J., Sand hu, J. K., Georgiou, M., Degeling, A. W., Forsyth, C., Bentley, S. N., Staples, F. A., and Shi, Q.: How Do Ultra-Low Frequency Waves Access the Inner Magnetosphere During Geomagnetic Storms?, *Geophys. Res. Lett.*, 46, 825 10,699–10,709, <https://doi.org/10.1029/2019GL082395>, 2019.
- Reeves, G. D., McAdams, K. L., Friedel, R. H. W., and O'Brien, T. P.: Acceleration and loss of relativistic electrons during geomagnetic storms, *Geophys. Res. Lett.*, 30, 1529, <https://doi.org/10.1029/2002GL016513>, 2003.
- Reeves, G. D., Spence, H. E., Henderson, M. G., Morley, S. K., Friedel, R. H. W., Funsten, H. O., Baker, D. N., Kanekal, S. G., Blake, J. B., Fennell, J. F., Claudepierre, S. G., Thorne, R. M., Turner, D. L., Kletzing, C. A., Kurth, W. S., Larsen, B. A., and Niehof, J. T.: 830 Electron Acceleration in the Heart of the Van Allen Radiation Belts, *Science*, 341, 991–994, <https://doi.org/10.1126/science.1237743>, <https://science.sciencemag.org/content/341/6149/991>, 2013.
- Richardson, I. G. and Cane, H. V.: Near-Earth Interplanetary Coronal Mass Ejections During Solar Cycle 23 (1996–2009): Catalog and Summary of Properties, *Solar Phys.*, 264, 189–237, <https://doi.org/10.1007/s11207-010-9568-6>, 2010.
- Rodger, C. J., Clilverd, M. A., Thomson, N. R., Gamble, R. J., Seppälä, A., Turunen, E., Meredith, N. P., Parrot, M., Sauvaud, J.-A., 835 and Berthelier, J.-J.: Radiation belt electron precipitation into the atmosphere: Recovery from a geomagnetic storm, *Journal of Geophysical Research: Space Physics*, 112, <https://doi.org/10.1029/2007JA012383>, <https://agupubs.onlinelibrary.wiley.com/doi/abs/10.1029/2007JA012383>, 2007.
- Rodger, C. J., Carson, B. R., Cummer, S. A., Gamble, R. J., Clilverd, M. A., Green, J. C., Sauvaud, J.-A., Parrot, M., and Berthelier, J.-J.: Contrasting the efficiency of radiation belt losses caused by ducted and nonducted whistler-mode waves from ground-based transmitters, 840 *Journal of Geophysical Research: Space Physics*, 115, <https://doi.org/10.1029/2010JA015880>, <https://agupubs.onlinelibrary.wiley.com/doi/abs/10.1029/2010JA015880>, 2010a.
- Rodger, C. J., Clilverd, M. A., Green, J. C., and Lam, M. M.: Use of POES SEM-2 observations to examine radiation belt dynamics and energetic electron precipitation into the atmosphere, *Journal of Geophysical Research: Space Physics*, 115, <https://doi.org/10.1029/2008JA014023>, <https://agupubs.onlinelibrary.wiley.com/doi/abs/10.1029/2008JA014023>, 2010b.
- 845 Rodger, C. J., Clilverd, M. A., Seppälä, A., Thomson, N. R., Gamble, R. J., Parrot, M., Sauvaud, J.-A., and Ulich, T.: Radiation belt electron precipitation due to geomagnetic storms: Significance to middle atmosphere ozone chemistry, *Journal of Geophysical Research (Space Physics)*, 115, A11320, <https://doi.org/10.1029/2010JA015599>, 2010.
- Rodger, C. J., Kavanagh, A. J., Clilverd, M. A., and Marple, S. R.: Comparison between POES energetic electron precipitation observations and riometer absorptions: Implications for determining true precipitation fluxes, *Journal of Geophysical Research: Space Physics*, 118, 850 7810–7821, <https://doi.org/10.1002/2013JA019439>, <https://agupubs.onlinelibrary.wiley.com/doi/abs/10.1002/2013JA019439>, 2013.
- Rodger, C. J., Cresswell-Moorcock, K., and Clilverd, M. A.: Nature's Grand Experiment: Linkage between magnetospheric convection and the radiation belts, *Journal of Geophysical Research: Space Physics*, 121, 171–189, <https://doi.org/10.1002/2015JA021537>, <https://agupubs.onlinelibrary.wiley.com/doi/abs/10.1002/2015JA021537>, 2016.

- Rodger, C. J., Turner, D. L., Clilverd, M. A., and Hendry, A. T.: Magnetic Local Time-Resolved Examination of Radiation Belt Dynamics during High-Speed Solar Wind Speed-Triggered Substorm Clusters, *Geophysical Research Letters*, 46, 10 219–10 229, <https://doi.org/10.1029/2019GL083712>, <https://agupubs.onlinelibrary.wiley.com/doi/abs/10.1029/2019GL083712>, 2019.
- Salminen, A., Asikainen, T., Maliniemi, V., and Mursula, K.: Effect of Energetic Electron Precipitation on the Northern Polar Vortex: Explaining the QBO Modulation via Control of Meridional Circulation, *Journal of Geophysical Research: Atmospheres*, 124, 5807–5821, <https://doi.org/10.1029/2018JD029296>, <https://agupubs.onlinelibrary.wiley.com/doi/abs/10.1029/2018JD029296>, 2019.
- Selesnick, R. S., Blake, J. B., and Mewaldt, R. A.: Atmospheric losses of radiation belt electrons, *Journal of Geophysical Research (Space Physics)*, 108, 1468, <https://doi.org/10.1029/2003JA010160>, 2003.
- Seppälä, A., Matthes, K., Randall, C. E., and Mironova, I. A.: What is the solar influence on climate? Overview of activities during CAUSES-II, *Progress in Earth and Planetary Science*, 1, 24, <https://doi.org/10.1186/s40645-014-0024-3>, 2014.
- Shue, J. H., Song, P., Russell, C. T., Steinberg, J. T., Chao, J. K., Zastenker, G., Vaisberg, O. L., Kokubun, S., Singer, H. J., Detman, T. R., and Kawano, H.: Magnetopause location under extreme solar wind conditions, *J. Geophys. Res.*, 103, 17 691–17 700, <https://doi.org/10.1029/98JA01103>, 1998.
- Singer, H., Matheson, L., Grubb, R., Newman, A., and Bouwer, D.: Monitoring space weather with the GOES magnetometers, in: *GOES-8 and Beyond*, edited by Washwell, E. R., vol. 2812 of *Society of Photo-Optical Instrumentation Engineers (SPIE) Conference Series*, pp. 299–308, <https://doi.org/10.1117/12.254077>, 1996.
- Sivadas, N., Semeter, J., Nishimura, Y., and Kero, A.: Simultaneous Measurements of Substorm-Related Electron Energization in the Ionosphere and the Plasma Sheet, *Journal of Geophysical Research: Space Physics*, 122, <https://doi.org/10.1002/2017ja023995>, 2017.
- Summers, D., Ni, B., Meredith, N. P., Horne, R. B., Thorne, R. M., Moldwin, M. B., and Anderson, R. R.: Electron scattering by whistler-mode ELF hiss in plasmaspheric plumes, *Journal of Geophysical Research (Space Physics)*, 113, A04219, <https://doi.org/10.1029/2007JA012678>, 2008.
- Tsyganenko, N. A. and Sitnov, M. I.: Modeling the dynamics of the inner magnetosphere during strong geomagnetic storms, *Journal of Geophysical Research (Space Physics)*, 110, A03208, <https://doi.org/10.1029/2004JA010798>, 2005.
- Tu, W. and Li, X.: Adiabatic effects on radiation belt electrons at low altitude, *Journal of Geophysical Research: Space Physics*, 116, <https://doi.org/10.1029/2011JA016468>, <https://agupubs.onlinelibrary.wiley.com/doi/abs/10.1029/2011JA016468>, 2011.
- Turner, D. L., Angelopoulos, V., Li, W., Hartinger, M. D., Usanova, M., Mann, I. R., Bortnik, J., and Shprits, Y.: On the storm-time evolution of relativistic electron phase space density in Earth’s outer radiation belt, *Journal of Geophysical Research (Space Physics)*, 118, 2196–2212, <https://doi.org/10.1002/jgra.50151>, 2013.
- Turner, D. L., Angelopoulos, V., Morley, S. K., Henderson, M. G., Reeves, G. D., Li, W., Baker, D. N., Huang, C.-L., Boyd, A., Spence, H. E., Claudepierre, S. G., Blake, J. B., and Rodriguez, J. V.: On the cause and extent of outer radiation belt losses during the 30 September 2012 dropout event, *Journal of Geophysical Research: Space Physics*, 119, 1530–1540, <https://doi.org/10.1002/2013JA019446>, <https://agupubs.onlinelibrary.wiley.com/doi/abs/10.1002/2013JA019446>, 2014.
- Turner, D. L., Kilpua, E. K. J., Hietala, H., Claudepierre, S. G., O’Brien, T. P., Fennell, J. F., Blake, J. B., Jaynes, A. N., Kanekal, S., Baker, D. N., Spence, H. E., Ripoll, J.-F., and Reeves, G. D.: The Response of Earth’s Electron Radiation Belts to Geomagnetic Storms: Statistics From the Van Allen Probes Era Including Effects From Different Storm Drivers, *Journal of Geophysical Research (Space Physics)*, 124, 1013–1034, <https://doi.org/10.1029/2018JA026066>, 2019.
- Tyssoy, H. N., Haderlein, A., Sandanger, M. I., and Stadsnes, J.: Intercomparison of the POES/MEPED Loss Cone Electron Fluxes With the CMIP6 Parametrization, *Journal of Geophysical Research: Space Physics*, 124, 628–642, <https://doi.org/10.1029/2018JA025745>, 2019.

- Usanova, M. E., Drozdov, A., Orlova, K., Mann, I. R., Shprits, Y., Robertson, M. T., Turner, D. L., Milling, D. K., Kale, A., Baker, D. N., Thaller, S. A., Reeves, G. D., Spence, H. E., Kletzing, C., and Wygant, J.: Effect of EMIC waves on relativistic and ultrarelativistic electron populations: Ground-based and Van Allen Probes observations, *Geophys. Res. Lett.*, 41, 1375–1381, <https://doi.org/10.1002/2013GL059024>, 2014.
- 895
- Van Allen, J. A.: Observations of high intensity radiation by satellites 1958 Alpha and 1958 Gamma, in: *Space Science Comes of Age: Perspectives in the History of the Space Sciences*, edited by Hanle, P. A., Chamberlain, V. D., and Brush, S. G., pp. 58–73, 1981.
- Verronen, P. T., Rodger, C. J., Clilverd, M. A., and Wang, S.: First evidence of mesospheric hydroxyl response to electron precipitation from the radiation belts, *Journal of Geophysical Research (Atmospheres)*, 116, D07307, <https://doi.org/10.1029/2010JD014965>, 2011.
- 900
- Xiao, F., Liu, S., Tao, X., Su, Z., Zhou, Q., Yang, C., He, Z., He, Y., Gao, Z., Baker, D. N., Spence, H. E., Reeves, G. D., Funsten, H. O., and Blake, J. B.: Generation of extremely low frequency chorus in Van Allen radiation belts, *Journal of Geophysical Research (Space Physics)*, 122, 3201–3211, <https://doi.org/10.1002/2016JA023561>, 2017.
- Yuan, Z., Li, M., Xiong, Y., Li, H., Zhou, M., Wang, D., Huang, S., Deng, X., and Wang, J.: Simultaneous observations of precipitating radiation belt electrons and ring current ions associated with the plasmaspheric plume, *Journal of Geophysical Research: Space Physics*, 118, 4391–4399, <https://doi.org/10.1002/jgra.50432>, <https://agupubs.onlinelibrary.wiley.com/doi/abs/10.1002/jgra.50432>, 2013.
- 905