

“Traits of sub-kilometer F-region irregularities as seen with the Swarm Satellites”

by Aol et al.

Dear Dr. Petr Pisoft,

Thank you for your letter. As authors of the manuscript angeo-2019-50, we thank the reviewers for their constructive suggestions and comments. In enhancing the quality of the paper, all the remarks we received on this research were taken into consideration and we present our response to each of them individually below. A marked-up manuscript version has also been embedded at the end of this document. We hope, our manuscript is acceptable for Annalese Geophysicae in this form.

Best regards

Sharon Aol

Below you find our point-by-point reply. For the convenience of the referees we have repeated in the response the relevant comments and then given text highlights in the revised manuscript in blue.

Response to Reviewer 1 comments

Comment: The authors have responded to all comments of all referees, and the paper has improved. There are still significant lacks, since many of the responses did not clear the issues raised. The submitted article is a very good report on the detectability of plasma irregularities in the 16 Hz data, but it is unlikely that the report enhances present scientific knowledge and evidence.

Response: Thank you for your valuable feedback and we are glad that our paper has improved basing on previous reviewer comments and suggestions. Below are points we wanted to address in this study:

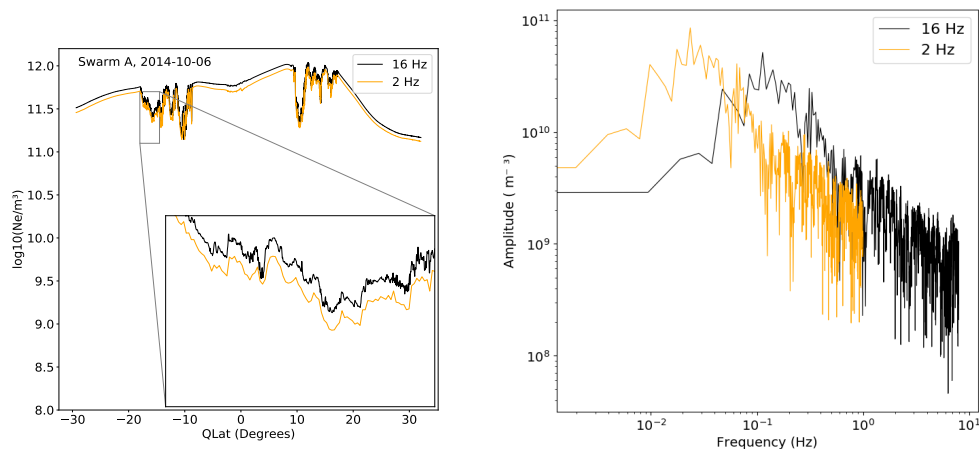
- This study aimed at checking the capability of the Swarm 16-Hz faceplate electron density measurements for small-scale ionospheric irregularity observations. As mentioned in the response to reviewer’s previous comments, the results presented in this study characterize small-scale ionospheric irregularities basing on various geophysical parameters as a first step towards developing a model from Swarm 16-Hz in situ measurements of electron density. As it has been stated in the manuscript, [The dependence of ionospheric irregularities on the geophysical parameters remains a problem in modeling their variation for predictive purposes \(Yizengaw and Groves, 2018\). Therefore, further global-scale studies on the distribution characteristics of ionospheric irregularities and their dependence on various factors are still necessary.](#) Currently, the team involved in this paper are carrying out further research involving modeling of amplitude scintillation from Swarm 16 Hz measurements using the WAM model.
- Here, we mostly dealt with small scale ionospheric irregularities which are relevant for L-band scintillations. [Some previous studies \(e.g, Xiong et al., 2016; Wan et al., 2018\) developed an algorithm to determine depletion amplitudes and they showed that large depletion amplitudes of EPBs are relevant for causing radio signal disruptions. On the other hand, other previous studies have also stated the relevance of the small-scale \$N_e\$ structures for causing L-band scintillations \(e.g, DOI 10.3389/fphy.2014.00015, DOI 10.1002/2016JA023222, DOI 10.1007/s10509-018-3303-4\). A point of reconciliation may be retrieved from Sharma et al. 2018, DOI 10.1007/s10509-018-3303-4 who suggested that the small scale structures might be abundantly available inside the largely depleted EPBs which becomes the cause of L-band scintillation. From the method used in our study, we mainly focus on irregularities of wavelength of about 15 km along the satellite track and this wavelength is within the range of applicable Fresnel scales which is theoretically relevant as a cause of L-band scintillations and therefore, here we characterize small scale ionospheric irregularities.](#)
- We also directly compared the relative and absolute small scale irregularity perturbations of N_e from a meridional point of view using data from Swarm 16 Hz over the low latitude region. As far as we know, [Huang et al 2014 used the 512 Hz C/NOFS satellite’s measurements of ion density and found that when the relative and absolute density disturbances are used independently, the likelihood of irregularities occurring and their variation with local time differ. However, the C/NOFS satellite was in a low tilt orbit, so the bubbles were sampled zonally. Important differences basing on latitudinal distribution of ionospheric irregularities using different criteria could not be addressed by Huang et al 2014. The polar-orbiting Swarm satellites sample bubbles in a meridional direction and they give an opportunity to check the difference in the latitudinal distribution of irregularities using different identification criteria.](#) Ionospheric irregularities exhibit anisotropy with respect to the magnetic field, which is very pronounced at short wavelengths (tens of meters, doi:10.1029/95JA03098), and expected to be significant also at km scales. C/NOFS and Swarm cover both different latitudinal distributions and aspect angles with respect to the

magnetic field. Also, Chartier et al 2018 used N_e and Total Electron Content (TEC) measurements made by the LPs and GPS, respectively on board Swarm to test the relative and absolute perturbations in the detection of polar cap patches. In terms of seasonal distribution, they observed discrepancies between the two methods with relative disturbances showing more patches in winter than in summer. However, the study presented by Chartier et al 2018 were confined to high latitudes. Therefore, in this study we extend the direct comparison of relative and absolute irregularity perturbations of N_e to the low latitudes using Swarm in the meridional direction.

- As an aspect which is possibly relevant for especially the small-scale irregularities we have also analyzed the along-track gradient of N_e (as a proxy of the pressure gradient).
- We have highlighted the above points in the revised manuscript. (please see the detailed descriptions at Pg. 2 L. 8-11, Pg.3 L. 28-33, Pg.4 L. 1-5, Pg. 9 L.7-16,)

Comment: I do not think, that the 16 Hz shows multiple peaks, but might reveal an extended frequency content if a frequency analyses would be made.

Response: Basing on the reviewer's suggestion, we performed frequency analysis to make it easy to identify and evaluate structural variations in the 2 Hz and 16 Hz electron density data. The type of frequency analysis we carried out is the Fourier transformation and the results is shown in the right panel of the figure below. The right panel shows the amplitude of the measured oscillations vs. the frequency in logarithmic scale. It can be seen that the 16 Hz data has an extended



frequency range compared to the 2 Hz data. One can see that the linear spectral index continues almost one order of magnitude to higher frequencies which corresponds to smaller scale structures. Therefore, the frequency spectrum is significantly different between 16 and 2 Hz data. The extended frequency should be because of the high resolution of the 16 Hz data and in the left panel multiple small scale density depletions can be observed in the 16 Hz data. To make it clear, the sentence in the revised manuscript has been rephrased to,

However, smaller scale electron density depletions in N_e cannot be verified with the low resolution 2 Hz data as shown in the zoomed-in sections in Fig.1. (see Pg. 5 L.8-9)

Comment: Answer to comment 6 of reviewer 1 is not very relevant. It is not important where the irregularity occurs, nor it is the sampling rate difference between Chartier et al. and the submitted paper, but Chartier et al. showed that the relative variation is elevated in regions of lower background electron density. This is re-shown by the submitted paper.

Response: We acknowledge that Chartier et al 2018 showed that the relative variation is elevated in regions of lower background electron density for polar cap patches. As far as we know, Chartier et al 2018 used N_e and Total Electron Content (TEC) measurements made by the LPs and GPS recorded at frequency of 2 Hz, respectively on board Swarm to test the relative and absolute perturbations in the detection of polar cap patches. Hence, the study presented by Chartier et al 2018 was confined to high latitudes to examine the polar cap patches. In the present manuscript, we extended the direct comparison of relative and absolute irregularity perturbations of N_e to the low latitudes where the distribution of irregularities is quite different from that at the polar region. In addition, Chartier et al 2018, presented patch occurrence rates during the period of study. However, Wan et al 2018 showed that the highest occurrence of rate does not always coincide with the largest depletion amplitude. Therefore, in this study we presented magnitudes of the ionospheric irregularities which is different from what was presented by Chartier et al 2018. Also, the algorithms adopted by Chartier et al 2018 utilized median smoothing filters of large windows to remove small-scale structures. As mentioned in the manuscript, High-resolution data enables smaller scale structures to be identified in electron density (Nishioka et al., 2011). Therefore, in the current manuscript, we quantified small scale structures using the high-resolution data which are relevant for L-band scintillation and this is different from the algorithm used by Chartier et al 2018 which removed small-scale structures.

In the current manuscript, we show that the relative variation is elevated in regions of lower background electron density, but at low latitudes and using 16 Hz faceplate electron density data in the meridional direction. The sampling rate difference and the latitudes where irregularities occur are important factors which have been known to determine the scale size of irregularities observed and to affect the distribution of occurrence of ionospheric irregularities, respectively. Therefore, it was relevant to extend the direct comparison relative and absolute perturbation to the low latitude region in the meridional direction using the 16 Hz faceplate electron density data.

- We have highlighted the above points in the revised manuscript. (please see the detailed descriptions at Pg. 4 L. 1-4, Pg.2 L. 34, Pg.11 L. 10-12, Pg. 9 L.7-16,)

Comment: Linear correlations between bubble detections and Kp in response to reviewer 2 are irrelevant. That the two quantities are not linearly correlated has been shown by Palmroth et al and Stolle et al. . The presented results show the same trends as in the mentioned papers. Among other things.

Response: We acknowledge that Palmroth et al (2000) and Stolle et al (2006) examined the correlation between occurrence of ionospheric irregularities and Kp. Palmroth et al. (2000) found a negative correlation between Kp and pre-midnight plasma depletions and a positive post-midnight correlation. Stolle et al. (2006) checked the response of the occurrence of ionospheric irregularities to geomagnetic activity using magnetic field measurements made by CHAMP and they observed a weak relation between the occurrence of irregularities and the Kp index. However, both studies used data sets that are in crucial aspects different than the one used in the present manuscript. The DE-2 data used by Palmroth et al. (2000) were on average at higher altitude (about 600 km). The lower orbit of Swarm can explain why we find a better correlation with Kp than Palmroth et al. (2000). The study by Stolle et al. (2006) used the magnetic field instead of directly the electron density, relying on the diamagnetic effect. The methods used by Palmroth et al (2000) and Stolle et al (2006) detect only strong irregularities, while the present manuscript includes also weak irregularities which cannot be detected reliably in the magnetic data alone. Therefore we don't agree, that the correlations with Kp using the Swarm data are "irrelevant".

In the presented manuscript we aimed at showing that the electron density measurements of Swarm faceplate can be applied to examine the characteristics of ionospheric equatorial irregularities at sub - kilometers scale lengths. We also obtained a weak correlation between Kp and $\text{std}(dN_e)$ ($\text{std}(dN_e)/N_e$) for small scale ionospheric irregularities which confirms the capability of the Swarm 16 Hz N_e data. We discuss the Kp correlation outputs in this manuscript as additional evidence that the Swarm 16 Hz N_e data is able to capture small scale ionospheric irregularities and also reproduce the irregularities dependence on Kp as in previous studies. We prefer to maintain the obtained results to show that Swarm 16 Hz data is a reliable data set because it produced similar observations as in earlier studies especially with regards to correlation between irregularities and Kp.

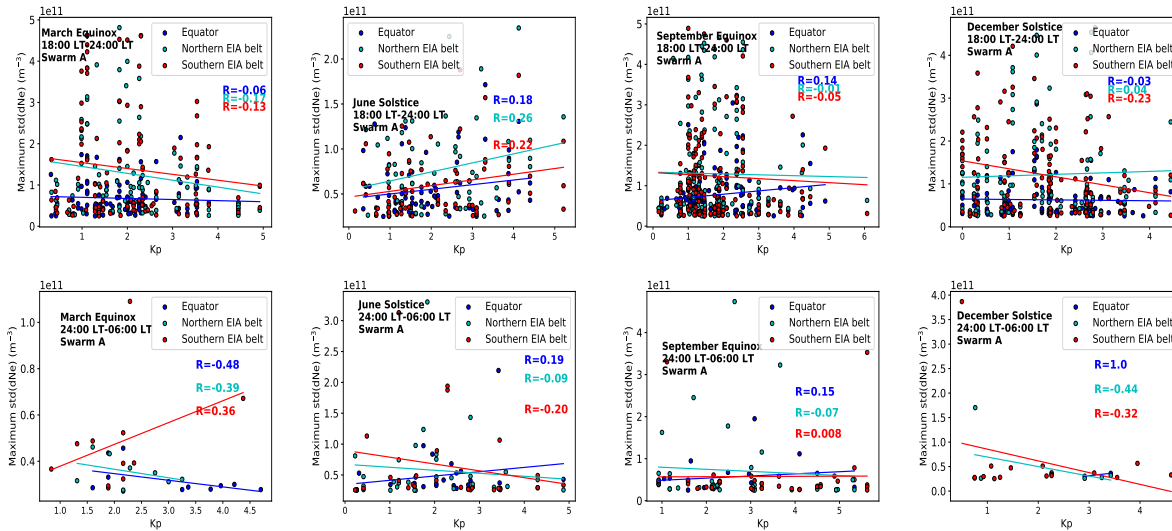
Response to Reviewer 2 Comments

Second review report for “Traits of sub-kilometer F-region irregularities as seen with the Swarm satellites” authored by S. Aol et al.

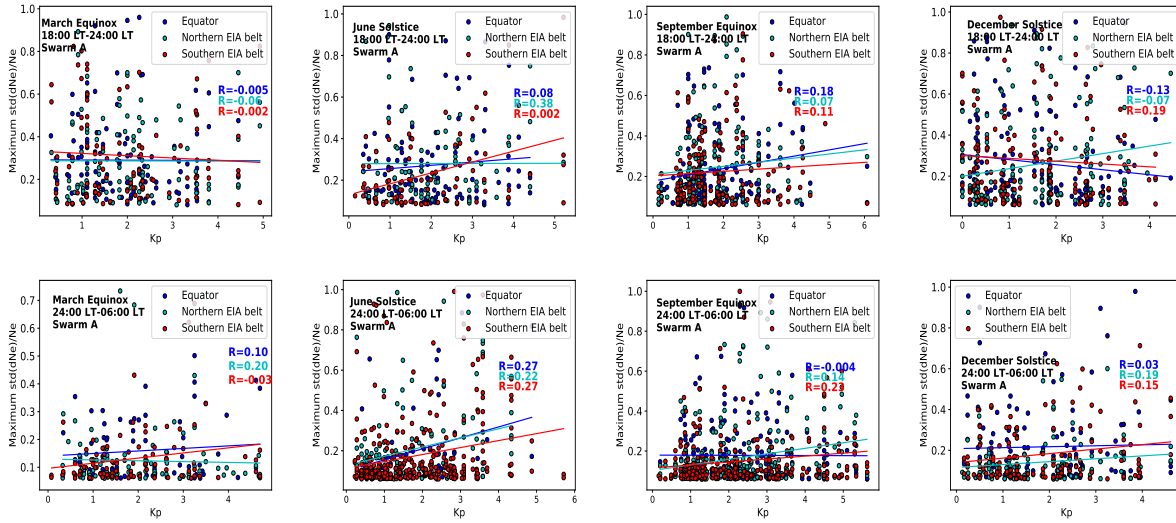
Comment: Authors had answered all the comments and modified the paper properly. Still, I have a minor suggestion to add the reply of my second comment in the manuscript to make it more robust. And I suggest the authors to do a clearer correlation analysis between $\text{std}(dN_e)$ or $\text{std}(dN_e)/N_e$ with K_p , more criteria like local time, seasons, solar flux could be set. If there are still no correlations, authors could simply mention the results in the manuscript.

Response:

- We thank the reviewer for acknowledging our efforts in modifying the manuscript in an appropriate manner and we also appreciate the reviewer for the valuable comments and suggestions which have improved the quality of this manuscript.
- Concerning the reply to the reviewer’s second comment, the suggestion to include it in the manuscript has been taken and the description has been incorporated in the revised manuscript. (see Pg. 9 L. 6-16)
- As suggested by the reviewer, a correlation analysis was done between $\text{std}(dN_e)$ ($\text{std}(dN_e)/N_e$) with K_p and the results are presented below for only Swarm A: The Swarm passes were categorized into different seasons i.e.,



March Equinox, June Solstice, September Equinox and December Solstice. For each season, the Swarm passes were further categorized into pre-midnight (18:00 LT - 24:00 LT) and post-midnight (24:00 LT - 06:00 LT) local times, respectively. Generally, the results show a weak negative correlation between $\text{std}(dN_e)$ and K_p close to zero, irrespective of the method used to quantify the level of equatorial ionospheric irregularities and the latitude range. Close inspection shows that the correlation between $\text{std}(dN_e)$ and K_p is negative at the EIA belts in all seasons and



for all local time categories, except in June Solstice where the correlation is a weak positive pre-midnight. The pre-midnight and post-midnight dependence of the $\text{std}(dN_e)$ on Kp contradicts with conclusions drawn by Palmroth et al. 2000, DOI 10.1029/1999JA005090. Palmroth et al. 2000 found a negative correlation between Kp and the plasma depletions for pre-midnight events and a positive correlation for post-midnight events up to a Kp value of 4. The correlations obtained here are marginal in both time sectors and we cannot regard them as significant. The correlation presented for post-midnight may be affected due to the low data availability.

- In general, the correlation between Kp and $\text{std}(dN_e)$ ($\text{std}(dN_e)/N_e$) is still a weak negative and we have therefore highlighted this general conclusions in the manuscript. (see Pg. 17 L. 9-11)

Minor comments

Comment:(1) P8, Line 10: should be “..occurrence at post-midnight..”.

Response:The sentence has been modified as reviewer suggests. (see Pg.8 L.11)

Traits of sub-kilometer F-region irregularities as seen with the Swarm satellites

Sharon Aol¹, Stephan Buchert², and Edward Jurua¹

¹Mbarara University of Science and Technology, Mbarara, Uganda

²Swedish Institute of Space Physics, Uppsala, Sweden

Correspondence: Sharon Aol (sharonaol@ymail.com)

Abstract. During the night, in the F-region, equatorial ionospheric irregularities manifest as plasma depletions observed by satellites and they may cause radio signals to fluctuate. In this study, the distribution characteristics of ionospheric F-region irregularities in the low latitudes were investigated using 16 Hz electron density observations made by the faceplate on board Swarm satellites of the European Space Agency (ESA). The study covers the period from October 2014 to October 2018 when the 16 Hz electron density data were available. For comparison, both the absolute ($\text{std}(dN_e)$) and relative ($\text{std}(dN_e)/N_e$) density perturbations were used to quantify the level of ionospheric irregularities. The two methods generally reproduced the local time, seasonal and longitudinal distribution of equatorial ionospheric irregularities as shown in earlier studies, demonstrating the ability of Swarm 16 Hz electron density data. A difference between the two methods was observed based on the latitudinal distribution of ionospheric irregularities where $\text{std}(dN_e)$ showed a symmetrical distribution about the magnetic equator, while $\text{std}(dN_e)/N_e$ showed a magnetic equator centered Gaussian distribution. High values of $\text{std}(dN_e)$ and $\text{std}(dN_e)/N_e$ were observed in spatial bins with steep gradients of electron density from a longitudinal and seasonal perspective. The response of ionospheric irregularities to geomagnetic and solar activities was also investigated using Kp index and solar radio flux index (F10.7), respectively. The reliance of $\text{std}(dN_e)/N_e$ on solar and magnetic activity showed little distinction in the correlation between equatorial and off-equatorial latitudes, whereas $\text{std}(dN_e)$ showed significant differences. With regard to seasonal and longitudinal distribution, high $\text{std}(dN_e)$ and $\text{std}(dN_e)/N_e$ values were often found during quiet magnetic periods compared to magnetically disturbed periods. The $\text{std}(dN_e)$ increased approximately linearly from low to moderate solar activity. Using the high-resolution faceplate data, we were able to identify ionospheric irregularities of scales of only a few hundreds of meters.

Keywords. Low latitude ionosphere, Ionospheric irregularities, seasonal and longitudinal climatology

1 Introduction

Noticeable features in the low-latitude ionosphere are plasma density irregularities which occur after sunset in the F-region (Kil and Heelis, 1998). They may be identified as density decrease along satellite passes referred to as Equatorial Plasma Bubbles (EPBs) or range and frequency spread signatures on ionograms commonly called Equatorial Spread F (ESF) (Woodman and La Hoz, 1976; Burke et al., 2004). The generalized Rayleigh Taylor Instability (RTI) is the suggested mechanism which can explain how ionospheric irregularities occur in the low latitudes (Woodman and La Hoz, 1976; Gentile et al., 2006; Portillo

et al., 2008; Nishioka et al., 2008; Kelley, 2009; Schunk and Nagy, 2009). They may cause disruptions in trans-ionospheric radio signals of frequencies ranging from a few hundred kilohertz to several gigahertz, which in turn degrade the performance of communication and navigation systems (Kil and Heelis, 1998; Kintner et al., 2007).

There are many studies on the distribution characteristics of equatorial ionospheric irregularities (e.g., Kil and Heelis, 1998; Huang et al., 2002; Burke et al., 2004; Makela et al., 2004; Park et al., 2005; Su et al., 2006; Stolle et al., 2006; Kil et al., 2009; Dao et al., 2011; Xiong et al., 2012; Carter et al., 2013; Huang et al., 2014; Costa et al., 2014). Long-term observations of equatorial ionospheric irregularities have shown that their occurrence depends on various geophysical parameters including longitude, latitude, altitude, local time, season, solar activity and geomagnetic conditions (Kil et al., 2009). [The dependence of ionospheric irregularities on the geophysical parameters, however, remains a problem in modeling their variation for predictive purposes \(Yizengaw and Groves, 2018\). Therefore, further global-scale studies on the distribution characteristics of ionospheric irregularities and their dependence on various factors are still necessary.](#) An interesting feature of these plasma irregularities is their scale sizes. They typically cover a variety of scale sizes, from a few centimeters to thousands of kilometers (Zargham and Seyler, 1989; Hysell and Seyler, 1998). The meter scales correspond to radio waves at HF and VHF frequencies where irregularities are associated with Bragg scattering of radio waves and the spread F phenomenon (Woodman, 2009). The in situ measurements by satellites are normally suitable for analyzing the global aspects of the statistics of ionospheric irregularities. Depending on the sampling rate, spatial scales from about 100 m and larger can be seen. However, the orbital characteristics of satellite missions can limit the statistical coverage regarding altitude, latitude, local time, solar cycle phase, seasons, longitude, and aspect angle with respect to the geomagnetic field. Stolle et al. (2006) used magnetic observations made by the polar-orbiting CHALLENGING Minisatellite Payload (CHAMP) satellite for the years 2001 – 2004 to study the irregularities. Multi-peak electron density fluctuations were not observed in the results presented by Stolle et al. (2006) due to the low sampling rate of the Planar Langmuir Probe (PLP) measurements. However, the CHAMP satellite's magnetic field data recorded at a frequency of 50 Hz showed irregularity structures as small as 50 m in scale size (Stolle et al., 2006). Multiple studies have also used high-resolution data sets when available to check the distribution characteristics of ionospheric irregularities and have been able to resolve plasma density structures to smaller scales along satellite tracks (e.g. Lühr et al., 2014; Huang et al., 2014, etc).

The Launch of the first Earth observation constellation mission of the European Space Agency (ESA), i.e., Swarm, in November 22, 2013, generated new interests in the study of ionospheric irregularities. A number of studies have demonstrated the use of Swarm satellites for observations of ionospheric irregularities (e.g. Buchert et al., 2015; Zakharenkova et al., 2016; Xiong et al., 2016; Xiong et al., 2016b; Wan et al., 2018; Yizengaw and Groves, 2018; Jin et al., 2019; Kil et al., 2019, etc). Most of these studies have used electron density measurements at a frequency of 2 Hz or 1 Hz made by the Langmuir Probes (LPs) on-board Swarm. Xiong et al. (2016) used Swarm 2-Hz electron density measurements to check the scale sizes of irregularity structures. They suggested that the structures have scale sizes in the zonal direction less than 44 km. The Swarm satellites have the capability of measuring electron density at an even higher frequency of 16 Hz using a faceplate. Swarm can record ionospheric irregularities of scale lengths up to 500 m along their tracks using the 16 Hz electron density measurements. [High-resolution data enables smaller scale structures to be identified in electron density \(Nishioka et al., 2011\).](#) The 16 Hz electron density data from Swarm satellite has not yet been used to study traits of ionospheric irregularities. In the present

study, we looked at the distribution characteristics of equatorial ionospheric irregularities using 16 Hz faceplate measurements of electron density. The study covers the period from October 2014 to October 2018 corresponding to the descending phase of solar cycle 24, when the 16 Hz electron density data was available. We show that the electron density measurements of Swarm faceplate can be applied to examine the characteristics of ionospheric equatorial irregularities at sub - kilometers scale lengths.

5 The rest of the paper is organized in the following order: The data and methods are presented in Sect. 2. The results are presented and discussed in Sect. 3. The summary and conclusions are presented in Sect. 4.

2 Data and Methods

The Swarm mission is made up of three same satellites (Swarm A, B, and C) with an orbital speed of around 7.5 km s^{-1} in polar orbits. Each satellite is equipped with an Electric Field Instrument (EFI) in addition to other payloads. The EFI consists of LPs, and Thermal Ion Imagers (TII) (Knudsen et al., 2017). The LPs measure simultaneously the electron density (N_e), electron temperature (T_e), and spacecraft potential at a frequency of 2 Hz along the satellites' track. The Swarm satellites also measure N_e at a frequency of 16 Hz with a faceplate only when the TII is inactive. The Plasma density is derived from the faceplate current assuming that it is carried by ions hitting the faceplate due to the orbital motion of the spacecraft (Buchert, 2016). Knudsen et al. (2017) provide more details on how electron density is derived from the LPs and TII. Using Swarm mission data collected from October 2014 to October 2018, orbit analysis was carried out to check on the status of the Swarm orbits. From the orbit analysis, by the end of October 2018, the longitudinal separation between Swarm A and C was about 1.4° corresponding to about 160 km distance at the equator, covering nearly the same local time sector with a time lag of about 1-10 seconds. The time lag between Swarm B and the lower pairs reached up to 8 hours. Swarm A and C were orbiting at an altitude of about 448 km (orbital inclination angle of 87.35°) above sea level over the low latitude region, and Swarm B was orbiting at an altitude of about 512 km (orbital inclination angle of 87.75°). In a day, the swarm satellites complete about 16 orbits with an average orbital period of about 91.5 min. Swarm satellites regress in longitude around 22.5° between orbital ascending nodes. Data sets measured by Swarm can be downloaded from <http://earth.esa.int/swarm>. The investigations done in this study are based on the 16 Hz N_e faceplate data collected for the period of October 2014 to October 2018.

The identification criteria adopted for quantifying ionospheric irregularities have been a matter of concern. Some earlier studies (e.g, Kil and Heelis, 1998; McClure et al., 1998; Burke et al., 2003; Su et al., 2006; Kil et al., 2009; Dao et al., 2011, etc) used relative plasma density disturbance to identify ionospheric irregularities while others (e.g, Lühr et al., 2014; Buchert et al., 2015; Xiong et al., 2016b, etc) took absolute density disturbance. However, Huang et al. (2014) used the 512 Hz Communication / Navigation Outage Forecasting System (C / NOFS) satellite's measurements of ion density and found that when the relative and absolute density disturbances are used independently, the likelihood of irregularities occurring and their variation with local time differ. The C / NOFS satellite was in a low tilt orbit, so the bubbles were sampled zonally. Important differences basing on latitudinal distribution of ionospheric irregularities using different criteria could not be addressed by Huang et al. (2014). The polar-orbiting Swarm satellites sample bubbles in a meridional direction and they give an opportunity to check the difference in the latitudinal distribution of irregularities using different identification criteria. The Swarm satellites

cover mainly small aspect angles with respect to the magnetic field near the equator, while C/NOFS included mainly near field-perpendicular density variations. Chartier et al. (2018) used N_e and Total Electron Content (TEC) measurements made by the LPs and GPS, respectively on board Swarm to test the relative and absolute perturbations in the detection of polar cap patches. In terms of seasonal distribution, they observed discrepancies between the two methods with relative disturbances showing more patches in winter than in summer. However, the study presented by Chartier et al. (2018) were limited to high latitudes.

For comparison purposes, two methods were also adopted for the polar-orbiting Swarm satellites to quantify the level of electron density irregularities in the low latitude region. In the first method, the 16 Hz N_e measurements were passed through a 2-s (32 data points) running mean filter corresponding to a wavelength of about 15 km. From the original observations, the filtered data were subtracted to obtain the residual $dN_e = N_e - \overline{N_e}$; where $\overline{N_e}$ is the mean of N_e at a 2-s interval. The standard deviation of the residuals which represents the density perturbation, $\text{std}(dN_e)$ was then calculated for every 32 data points. Basu et al. (1976) found that, on a global scale, absolute density perturbation equal to $1 \times 10^{-10} \text{ m}^{-3}$ represents the percentage occurrence of 140 MHz scintillations. Xiong et al. (2010) used absolute density disturbance thresholds of $5 \times 10^{10} \text{ m}^{-3}$ and $3 \times 10^{10} \text{ m}^{-3}$ respectively to identify density irregularity structures on CHAMP and GRACE observations. Wan et al. (2018) adopted absolute density perturbation $> 5 \times 10^{10} \text{ m}^{-3}$ to identify ionospheric irregularities from Swarm. Basing on the method used in the current study, only batches with $\text{std}(dN_e)$ greater than $0.25 \times 10^{10} \text{ m}^{-3}$ were considered to be significantly irregular and selected for extra processing and analysis. In the second method, $\text{std}(dN_e)$ was divided by $\overline{N_e}$ to obtain the relative perturbation, $\text{std}(dN_e)/N_e$. There is no specific threshold definition to be used when $\text{std}(dN_e)/N_e$ identifies irregularities (Huang et al., 2014; Wan et al., 2018). Kil and Heelis (1998) determined the likelihood of occurrence of relative disturbance $> 1\%(0.01)$ and $5\%(0.05)$ from Atmospheric Explorer-E (AE - E) satellite data. The AE - E satellite data was also used by McClure et al. (1998), but relative disturbances $> 0.5\%(0.005)$ were used to identify irregularities. To identify the occurrence of ROCSAT-1 irregularities, Su et al. (2006) and Kil et al. (2009) used a threshold of $0.3\%(0.003)$ for the relative disturbance. Huang et al. (2014) used high-resolution ion density measurements from the C / NOFS satellite and took relative perturbation $> 1\%(0.01)$. Wan et al. (2018) considered relative perturbation values larger than 20%. In the current study, only batches with $\text{std}(dN_e)/N_e > 0.01$ were considered to be significantly irregular and used for further analysis basing on the methods adopted. Here, we mostly dealt with small scale ionospheric irregularities which are relevant for L-band scintillations. It is essential to note that these small-scale irregularities are not autonomous from those of large-scale ionospheric irregularities and they were not differentiated. The only satellite sampling the bottom-side, at altitudes below 300 km, has so far been the Atmosphere Explorer-E (AE-E) (Kil and Heelis, 1998). With the AE-E satellite, irregularities with relatively small amplitudes were seen without clearly developed EPBs. At altitudes above 350 km addressed by nearly all other studies, smaller scale irregularities are usually embedded in EPBs. Automatic detection algorithms used in previous works do not discriminate between depletions (EPBs) and irregular multi-peak variations, with the exception of Wan et al. (2018), whose algorithm determined a depletion amplitude. The results are presented and discussed in the following section.

3 Results and Discussions

The high-resolution Swarm faceplate N_e data were used to characterize ionospheric irregularities using procedures described in Sect. 2. Figure 1 shows examples of N_e results for arbitrary passes of Swarm A and C on 2014-10-06 and 2015-07-03,

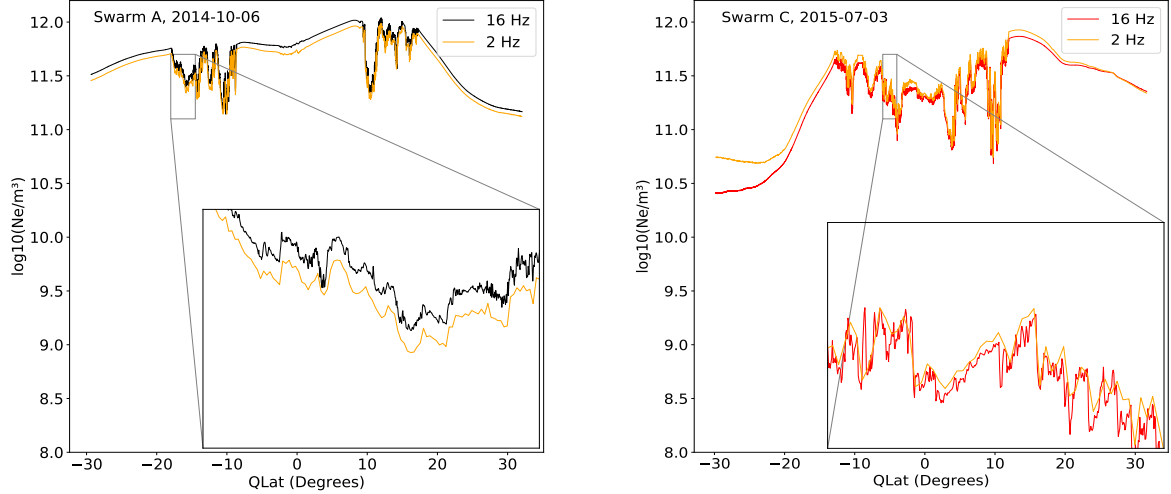


Figure 1. Comparison of 2 Hz LP data and 16 Hz faceplate data for Swarm A and C on 2014-10-06 and 2015-07-03, respectively.

respectively from the LP and faceplate to highlight the capability of the 16 Hz N_e data for observations of irregularity density structures. In Fig. 1, the orange curve is the time series of the 2 Hz LP data, while the black and red curves are the time series of the 16 Hz faceplate data for Swarm A and C, respectively. Both the 16 Hz and 2 Hz N_e data show large density depletion along the satellite tracks concentrated at about $\pm 15^\circ$ quasi-dipole latitude (QLat). The 16 Hz N_e data were able to capture fluctuations in N_e just as the 2 Hz data. However, smaller scale electron density depletions in N_e cannot be verified with the low resolution 2 Hz data as shown in the zoomed-in sections in Fig. 1. One of the drawbacks associated with the 16 Hz N_e data, as mentioned earlier, is that it is only recorded when the TII is inactive. Therefore, to check data availability, Table 1 summarizes the number of satellite passes per year for which 16 Hz N_e data were recorded. We used all the passes available as summarized in Table 1 and later realized that data accumulation for the period of study was enough for a climatology study.

Examples of Swarm's encounters with ionospheric irregularities are presented in Fig. 2. Figure 2 panel (a) shows multiple N_e depletions occurring between about $\pm 10^\circ - \pm 20^\circ$ QLat. From Fig. 2 panels (b) and (c), large values of both $\text{std}(dN_e)$ and $\text{std}(dN_e)/N_e$ often occur in locations of large depletions in N_e at the EIA crests close to the quasi-dipole equator,

Table 1. Summary of yearly total Swarm satellite passes over the low latitude region for which 16 Hz data was recorded.

Satellite	Total Swarm satellite passes per year					Total passes per satellite
Year	2014	2015	2016	2017	2018	
Swarm A	711	7,158	6,670	6,520	4,242	25,301
Swarm C	891	1,390	8,208	7,101	5,748	23,068
Swarm B	1,127	7,836	7,522	7,017	2,895	26,397

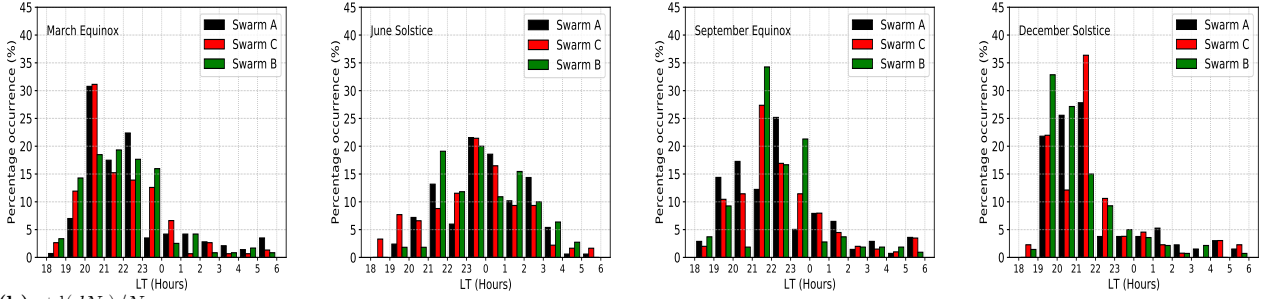
but also at the bottom of large scale bubbles. Based on the thresholds defined in Sect. 2 ($\text{std}(dN_e) > 0.25 \times 10^{10} \text{ m}^{-3}$ and $\text{std}(dN_e)/N_e > 0.01$) to identify plasma density structures, these depletions are ionospheric irregularities. The RTI is the most known mechanism that causes irregularities in low latitudes (Kelley, 2009; Kintner et al., 2007). The lower ionospheric layer declines rapidly during the night compared to the top layer. This creates a sharp vertical gradient of plasma density directed upwards, contrary to the gravitational force's direction of action. For such unstable arrangement, irregularities in the F - region at the bottom intensify and drift up, creating more complex plasma structures that extend to higher altitudes along magnetic field lines (Woodman and La Hoz, 1976; Abdu, 2005; Kelley, 2009). In general, ionospheric irregularities are more intense at the Equatorial Ionization Anomaly (EIA) belts ($\pm 15^\circ$ QLat) than at the geomagnetic equator as observed in Fig. 2. However, from Fig. 2, the event presented for Swarm A and C on 2015-03-07 shows high values of $\text{std}(dN_e)/N_e$ even at the magnetic equator. Huang et al. (2014) also observed that the relative and absolute perturbations were both able to capture fluctuations in ion density measurements made along C / NOFS tracks during 2008 – 2012 in the zonal direction. However, it was not possible to see a more detailed latitude distribution using C / NOFS satellite because it covered a small latitude range of about $\pm 13^\circ$ due to its low inclination angle of about 13° . The local time distribution characteristics of ionospheric irregularities were also determined and the results are presented and discussed in the following subsection.

3.1 Local Time Distribution of Ionospheric Irregularities

It is known from many studies (e.g. Kil and Heelis, 1998; Burke et al., 2004; Su et al., 2006; Stolle et al., 2006; Dao et al., 2011; Huang et al., 2014; Xiong et al., 2016b; Wan et al., 2018, etc) that ionospheric irregularities in the low latitudes occur after sunset. Here, we also check the local time dependence of the ionospheric irregularities identified on the N_e data from the Swarm faceplate to compare with previous results. Figure 3 presents the percentage occurrence of equatorial ionospheric irregularities as a function of local time based on (a) $\text{std}(dN_e)$ and (b) $\text{std}(dN_e)/N_e$. Using 16 Hz N_e data accumulated during the period of study, the seasonal dependence of local time distribution of ionospheric irregularities was also examined by grouping all the data into different seasons corresponding to March Equinox (Feb-Mar-Apr), June Solstice (May-Jun-Jul), September Equinox (Aug-Sep-Oct), and December Solstice (Nov-Dec-Jan). The number of irregularity structures was determined per one hour local time bin by counting the number of irregularity structures in a bin divided by the total number of observations.

As mentioned earlier, ionospheric irregularities in the low latitudes are nighttime phenomena and therefore, the analysis was restricted to the time period from 1800 LT-0600 LT. From Fig. 3, it is seen that irregularities occur from 1800 LT to 0600 LT as expected, irrespective of the method used. In Fig. 3, the highest percentage occurrence is observed in the equinoxes and

(a) $\text{std}(dN_e)$



(b) $\text{std}(dN_e)/N_e$

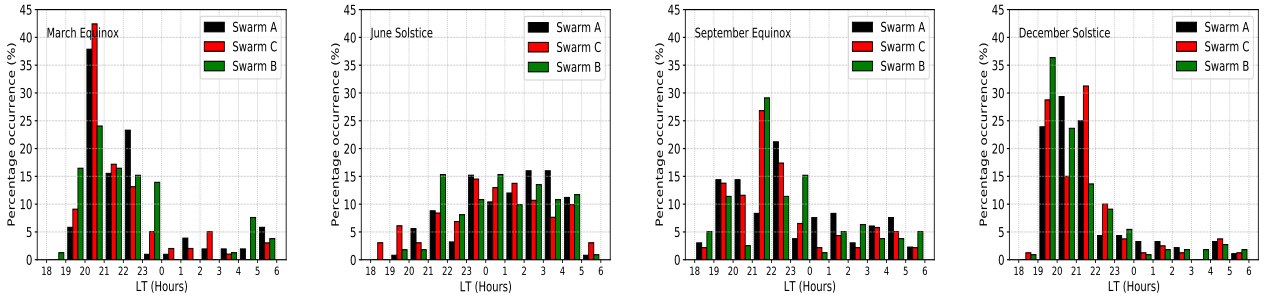


Figure 3. Histograms showing the percentage occurrence of (a) $\text{std}(dN_e) > 0.25 \times 10^{10} \text{ m}^{-3}$ and (b) $\text{std}(dN_e)/N_e > 0.01$ as a function of local time (LT) for the period from October 2014 - October 2018 for Swarm A, B, and C. Each panel presents a season.

ionospheric irregularities is low in the June solstice and the percentage increase is slower with a wide plateau extending past midnight. According to Su et al. (2009), a late reversal of zonal drift associated with a small upward vertical post-sunset drift occurring at positive magnetic declination lengths in June solstice significantly inhibits irregularities. For the case of $\text{std}(dN_e)$, the percentage occurrence reduces towards morning hours, while $\text{std}(dN_e)/N_e$ maintains a high percentage occurrence past midnight in June Solstice. The percentage occurrence trend of $\text{std}(dN_e)$ -based irregularities is like that of Kil and Heelis (1998), Palmroth et al. (2000), Burke et al. (2004), Su et al. (2006), Stolle et al. (2006), Su et al. (2009), Xiong et al. (2016b), Wan et al. (2018), etc. The $\text{std}(dN_e)/N_e$ shows a nearly similar trend in percentage occurrence as for $\text{std}(dN_e)$ but with high occurrence post-midnight in June solstice. Increase in post-midnight irregularities quantified by relative perturbations has also been observed by Huang et al. (2011), Huang et al. (2012), Huang et al. (2014) and Dao et al. (2011) who used ion density measurements made by C / NOFS. The mechanisms that generate these post-midnight irregularities are still unknown and widely debated. Two mechanisms to explain the occurrence of post-midnight irregularities have been suggested. One mechanism is the seeding of the RTI by atmospheric gravitational waves from below into the ionosphere, while the other mechanism is the elevation of the F-layer by the thermosphere's meridional neutral winds, which may be connected with the thermosphere's highest midnight temperature (Otsuka, 2018, and references therein).

The Global Positioning System - SCINTillation Network and Decision Aid (GPS - SCINDA) has often been used as one of the tools for measuring variations in radio signals' amplitude and phase. In the absence of GPS - SCINDA, many studies

(e.g, Basu et al., 1999; Yang and Liu, 2015; Yizengaw and Groves, 2018) have shown that the rate of change of TEC index (*ROTI*) derived from Global Navigation Satellite System (GNSS) Total Electron Content (TEC) can be used as a proxy for quantifying scintillations. The *ROTI* is defined as the standard deviation of Rate of Change of TEC (*ROT*) (Pi et al., 1997). Numerous studies have widely discussed these indices (e.g, Pi et al., 1997; Basu et al., 1999; Zou and Wang, 2009; Zakharenkova et al., 2016; Kumar, 2017; Yizengaw and Groves, 2018). We adopted *ROTI* to compare the ground-based local time variations of irregularities/scintillations over different International GNSS Service (IGS) stations installed along the low latitude region with the variations presented in Fig. 3. Xiong et al. (2016a) and Wan et al. (2018) developed an algorithm to determine depletion amplitudes and they showed that large depletion amplitudes of EPBs are relevant for causing radio signal disruptions at L-band frequency. On the other hand, some previous studies have also stated the relevance of the small-scale N_e structures for causing L-band scintillations (e.g, Spogli et al., 2016; Lühr et al., 2014; Bhattacharyya et al., 2003; Rao et al., 1997). Sharma et al. (2018) suggested that small-scale structures may be abundantly available within the largely depleted EPBs, becoming the cause of L-band scintillation. Therefore, the results presented by Xiong et al. (2016a) and Wan et al. (2018) could be explained because deep EPBs involve steep density gradients and large background density which would create the small-scale irregularities. From the method used in our study, we mainly focused on irregularities of wavelength of about 15 km along the satellite track and this is within the range of applicable Fresnel scales which is theoretically relevant as a cause of L-band scintillations. The IGS stations considered in this study are shown in Fig. 4 as red stars. The details of the IGS stations used are summarized in Table 2. To find *ROTI*, only signals from GPS satellites with

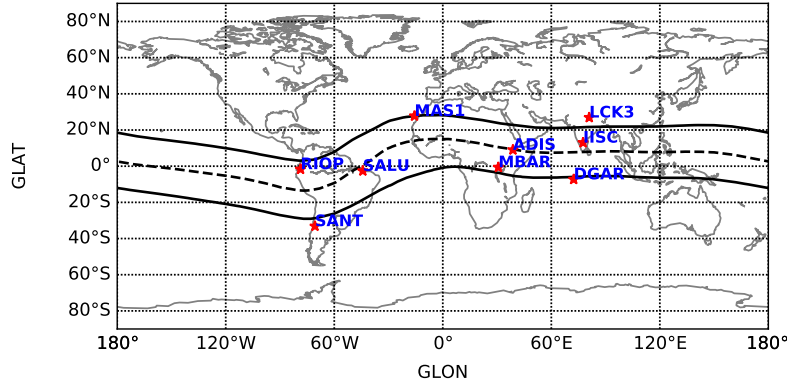


Figure 4. Map showing the location of IGS stations (red stars) considered in this study. The black dotted line represents the magnetic equator, while at about $\pm 15^\circ$ magnetic latitude the black solid lines represent the EIA belts.

elevation angle higher than 25° over each independent station were considered to reduce the multipath effects. The *ROTI* values > 0.5 TECU/min ($1 \text{ TECU} = 10^{16} \text{ el/m}^2$) were classified as irregularities/scintillations (Ma and Maruyama, 2006). Figure 5 presents the percentage occurrence of *ROTI* > 0.5 TECU/Min in 1-hour local time bins for the different IGS stations and seasons. It is important to note that RIOP did not have TEC data in June solstice and September equinox as seen in panels (b) and (c) of Fig. 5. In general, the trend followed by local time distribution of *ROTI* seems to closely agree

Table 2. Coordinates of IGS stations used in this study.

Station(Code)	Coordinates		
	Geog. lat (°)	Geog. lon (°)	Mag. lat (°)
Mbarara (MBAR)	-0.60	30.74	-10.2
Addis Ababa (ADIS)	9.04	38.77	0.18
Maspalomas (MAS1)	27.76	-15.63	15.63
Riobamba (RIOP)	-1.65	-78.65	10.56
Santiago (SANT)	-33.15	-70.67	-19.52
São Luis (SALU)	-2.59	-44.21	-0.25
Diego Garcia Island (DGAR)	-7.27	72.37	-16.89
Bangalore (IISC)	13.02	77.57	5.34
Lucknow (LCK3)	26.91	80.96	20.59

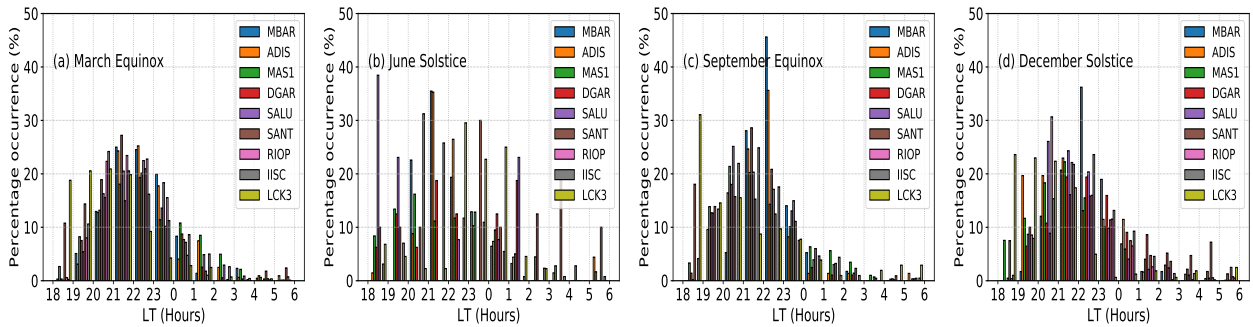


Figure 5. Percentage occurrence of $ROTI > 0.5$ TECU/Min in 1 hour LT bins for different stations (see legend).

with that of $\text{std}(dN_e)$ and $\text{std}(dN_e)/N_e$ in the equinoxes and December Solstice. As expected the percentage occurrence of ionospheric irregularities is higher mainly for the IGS stations in the African longitude even in June Solstice (Yizengaw et al., 2014). The percentage occurrence in June Solstice is generally small, comparable to that observed in Fig. 3, with a broad plateau extending post-midnight. However, the enhanced post-midnight irregularities seen in Fig. 3(b) for $\text{std}(dN_e)/N_e$ for

5 June Solstice are not observed in the LT trend of ROTI. Therefore, the LT dependence of percentage occurrence of ionospheric irregularities quantified using $\text{std}(dN_e)$ closely follows the same trend as that of ROTI for all seasons. The seasonal and longitudinal distribution of ionospheric irregularities is presented in the following subsection.

3.2 Seasonal and Longitudinal Distribution of Ionospheric Irregularities

The Swarm mission's 16 Hz N_e data collected over the 5-year period (2014 – 2018) has a credible global spatial and temporal

10 coverage that is sufficiently good for examining the seasonal and longitudinal distribution of ionospheric irregularities in the low latitudes. To check the seasonal and longitudinal variation of ionospheric irregularities, we concentrate on satellite passes within the local time range, 1800 – 0600 LT. The N_e data for the period of study was divided into four seasons as

described in Sect. 3.1. Swarm equator crossings spanning the range of $-40^\circ - +40^\circ$ were considered since the study narrows down to the low latitude region. The $\text{std}(dN_e)$ and $\text{std}(dN_e)/N_e$ were calculated in bins of $3^\circ \times 4^\circ$ resolution in geographic latitude and longitude. The occurrence rate of ionospheric irregularities does not always correspond to the highest amplitude of irregularity structures from the results presented by Wan et al. (2018). Therefore, here we concentrate on the magnitude of ionospheric irregularities other than the rate of occurrence. Zakharenkova et al. (2016) compared Swarm A and B 1-s N_e data and revealed satellite-to-satellite differences related to altitude, longitude, and local time. Here, we also show the results for all the three satellites separately. Figure 6 shows the seasonal and longitudinal distribution of $\text{std}(dN_e)$ during the period of

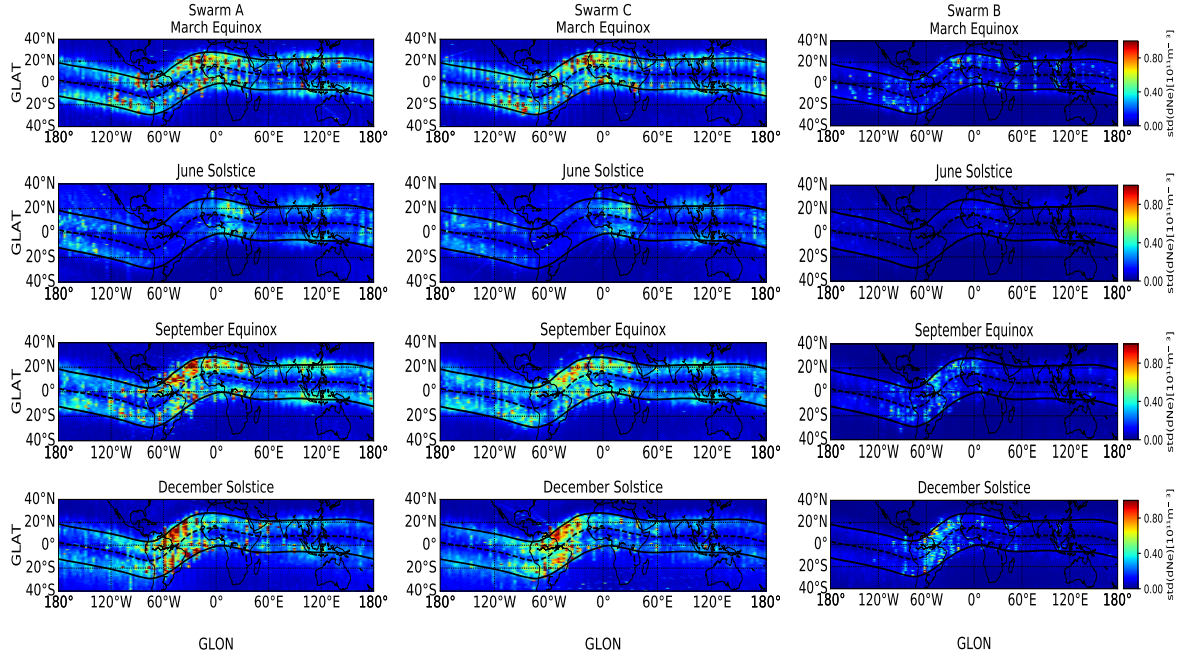


Figure 6. Absolute electron density perturbation ($\text{std}(dN_e)$) separated into four seasons (March/September equinox and June/December solstice) from October 2014 to October 2018 for Swarm A, C, and B. The black dotted line represents the magnetic equator, while the black solid lines represent the EIA Belts at about $\pm 15^\circ$ magnetic latitude. For each panel of a season, the color scales represent $\text{std}(dN_e)$.

study in geographic coordinates, while Fig. 7 presents that of $\text{std}(dN_e)/N_e$ for Swarm A, C, and B independently in the first, second, and third columns, respectively. The different seasons are shown in the four panels from top to bottom.

- 10 The first noticeable feature in Fig. 6 and Fig. 7 is that almost all the irregularities occur within the EIA belts between about $\pm 15^\circ - \pm 20^\circ$ magnetic latitudes. However, Fig. 6 shows that absolute variations of $\text{std}(dN_e)$ are observed with a gap of low values at the magnetic equator, while in Fig. 7 maximum values of $\text{std}(dN_e)/N_e$ extend from the northern crest to the southern crest, including the magnetic equator. A clear picture of the density variations across the magnetic equator is seen in a scatter plot of the irregularities as a function of latitude as shown in Fig. 8. Some earlier studies (e.g. Burke et al., 2004; Su et al.,
- 15 2006, etc) observed a normal-like distribution that peaks at the quasi - dipole equator and gradually decreases towards higher latitudes, reaching a minimum at around $\pm 30^\circ$ QLat, while others observed ionospheric irregularities concentrated around

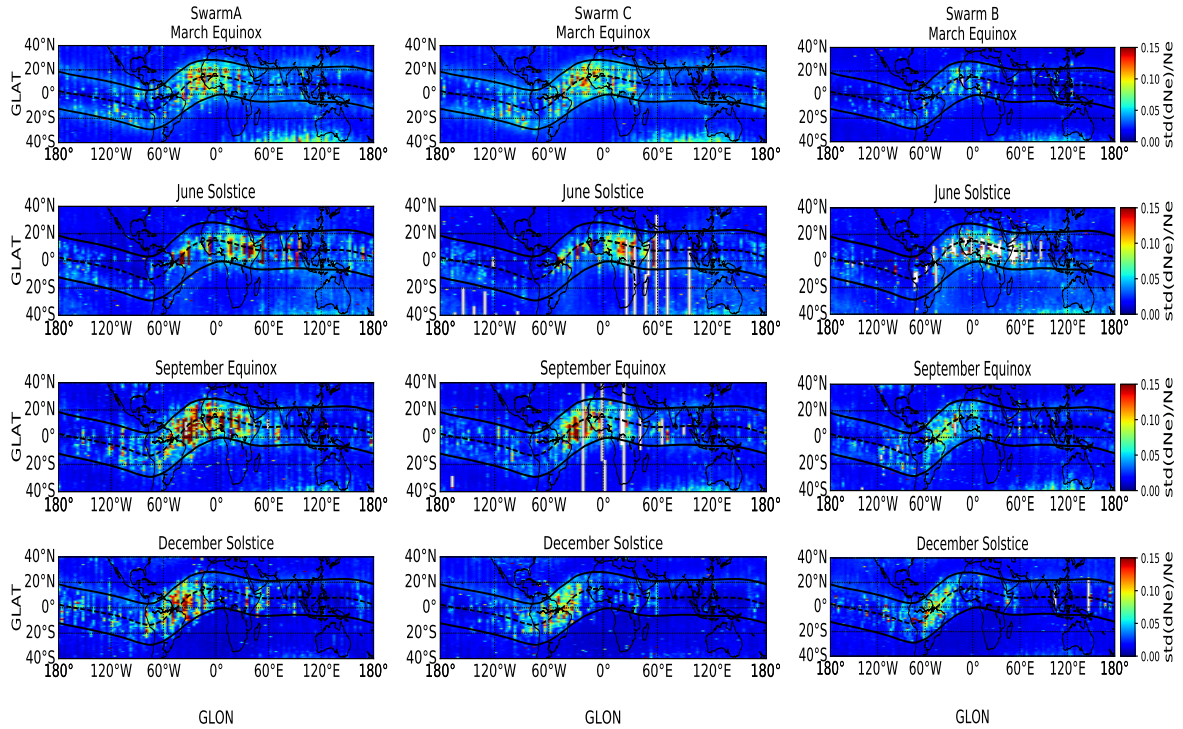


Figure 7. Relative electron density perturbation ($\text{std}(dN_e)/N_e$) separated into four seasons (March/September equinox and June/December solstice) from October 2014 to October 2018 for Swarm A, C, and B. The black dotted line represents the magnetic equator, while the black solid lines represent the EIA Belts at about $\pm 15^\circ$ magnetic latitude. For each panel of a season, the color scales represent $\text{std}(dN_e)/N_e$.

the northern and southern EIA belts (e.g. Liu et al., 2005; Stolle et al., 2006; Carter et al., 2013, etc). Only a few losses of the GPS tracks have been seen on the quasi-dipole equator (e.g. Buchert et al., 2015; Xiong et al., 2016a; Wan et al., 2018). Consequently, the variations in electron density at the quasi - dipole equator are relatively harmless to the GPS, the high-risk region being the high-density bands, north and south (Buchert et al., 2015).

- 5 Furthermore, there are differences between Swarm A / C and B in seasonal and longitudinal irregularity distribution. Swarm B shows the lowest values of both $\text{std}(dN_e)$ and $\text{std}(dN_e)/N_e$ compared to A and C. A similar observation was made by Zakharenkova et al. (2016) who compared the seasonal and longitudinal variation of ionospheric irregularities for only Swarm A and B during the years 2014 – 2015 using the 1-s N_e LP data. The differences observed between Swarm A/C and Swarm B can be explained by the altitude and local time separation between the satellites as Swarm B flies at a higher altitude and
- 10 always crosses the post-sunset sector later than A and C.

In terms of seasons, high values of $\text{std}(dN_e)$ and $\text{std}(dN_e)/N_e$ are observed during the equinoxes at all longitudes especially in the African-Atlantic-South American regions. During June solstice, moderate values occur mostly in the African sector and the lowest values occur in the Atlantic-South American sector. During December solstice, high values are observed in the Atlantic-American sector. From the Indian Ocean to central Pacific sectors where the magnetic field declination is low, no

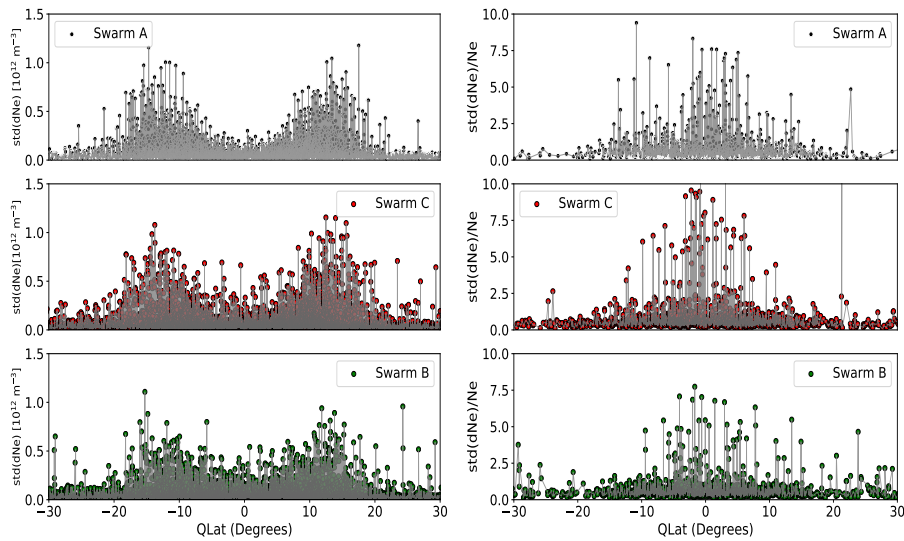


Figure 8. Scatter plots of latitude distribution of ionospheric irregularities observed for the period from October 2014 to October 2018. The left panel shows the distribution when irregularities are quantified using $\text{std}(dN_e)$, while the right panel shows the distribution when $\text{std}(dN_e)/N_e$ is used.

satellite detected many intense ionospheric irregularities in solstice seasons and in September equinox. Overall, the seasonal and longitudinal irregularity distribution shown in Fig. 6 and Fig. 7 is consistent with earlier studies irrespective of the criteria adopted (e.g., Su et al., 2006; Huang et al., 2001; Burke et al., 2004; Park et al., 2005; Huang et al., 2014; Zakharenkova et al., 2016; Wan et al., 2018). The RTI is known to intensify after sunset, causing severe irregularities when the day-night terminator is aligned with the plane of the magnetic field that occurs in the equinox (Tsunoda, 1985; Burke et al., 2004; Gentile et al., 2006; Yizengaw and Groves, 2018).

One of the challenges has been explaining the mechanism governing the longitudinal distribution of irregularities. Tsunoda (1985) proposed a model based on the magnetic declination to explain the distribution of ionospheric irregularities. However, this model could not explain the high occurrence of irregularities in June solstice over the African longitude. The longitudinal distribution of irregularities has also been attributed to gravity waves originating from the thermosphere (Yizengaw and Groves, 2018, and references therein). Yizengaw and Groves (2018) also added that the intertropical convergence zone (ITCZ) position, which are sources of gravity waves, may explain the longitudinal irregularity dependence observed. Kil et al. (2004) suggested that the longitudinal distribution at EIA latitudes of absolute electron density affects the occurrence of irregularities. Using DMSP data, Huang et al. (2001), Huang et al. (2002), and Burke et al. (2004) showed that the pattern of precipitation of the inner radiation belt's energetic particles explains the pattern of irregularities.

Among other parameters, the growth rate of equatorial ionospheric irregularities is controlled by the electron density gradient. Ionospheric irregularities in the equatorial and low latitudes can cascade upwards and along the magnetic field lines to

the EIA belts characterized by high background N_e and steep gradients in density (Muella et al., 2010). From both local time and longitudinal perspectives, Wan et al. (2018) confirmed that the depletion amplitudes of irregularities are closely linked to the background electron density intensity. Xiong et al. (2016a) concluded that GPS signal reception may be interfered by small-scale plasma density structures with large-density gradients in zonal and meridional directions. Here, we attempt to compare the seasonal and longitudinal distribution of electron density gradient in the meridional direction along the tracks of the Swarm satellites with the magnitudes presented in Fig. 6 and Fig. 7. To determine the N_e gradient along the satellite tracks, N_e

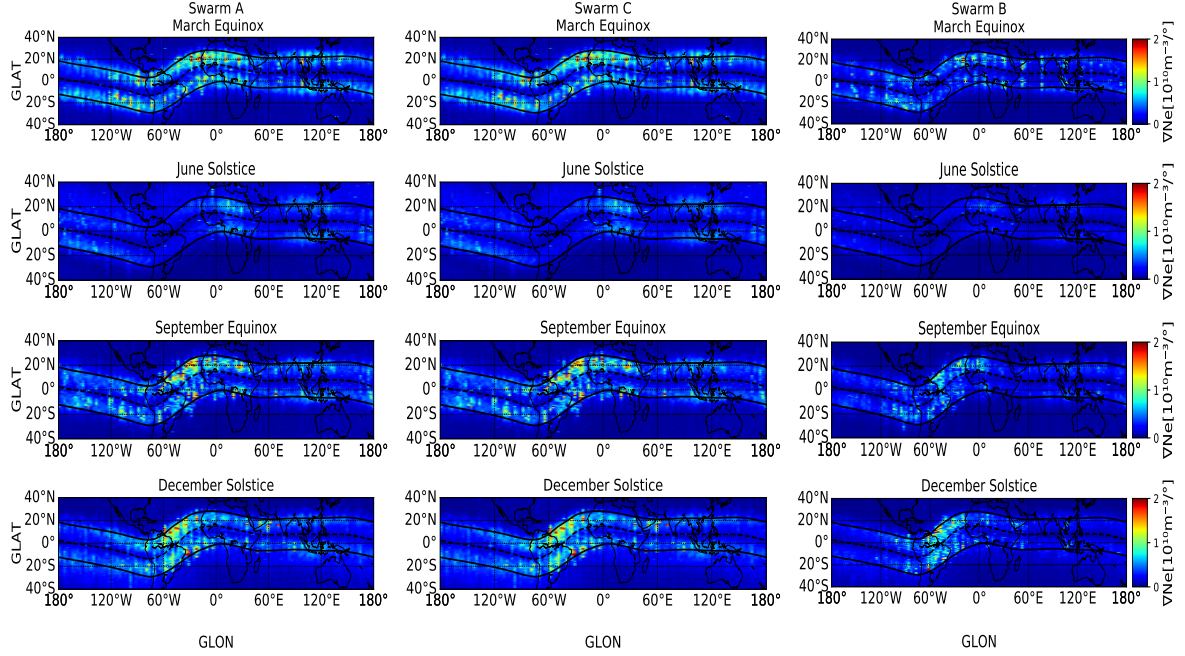


Figure 9. Along-track electron density gradient ∇N_e as derived from the Swarm satellites separated into four seasons (March/September equinox and June/December solstice) from October 2014 to October 2018 for Swarm A, C, and B. The black dotted line represents the magnetic equator, while the black solid lines represent the EIA belts at about $\pm 15^\circ$ magnetic latitude.

depletion was divided by the corresponding latitudinal distance in degrees. Figure 9 presents the N_e gradient, ∇N_e classified in different seasons for Swarm A, C, and B independently. The seasonal and longitudinal distribution of ∇N_e generally shows the same pattern as that of $\text{std}(dN_e)$ and $\text{std}(dN_e)/N_e$ with high values observed during the equinoxes and December solstice and moderate values in the African sector in June solstice. However, close inspection of Fig. 9 shows that the ∇N_e has the same latitudinal distribution as $\text{std}(dN_e)$ i.e., it is symmetrical about the magnetic equator with high values at the EIA belts. On the other hand, the latitudinal distribution of ∇N_e is different from that of $\text{std}(dN_e)/N_e$ (see Fig. 7). Earlier studies have also shown that irregularity events at latitudes of the EIA might be associated with the regions of strong density gradient (e.g, Basu et al., 2001; Keskinen et al., 2003; Muella et al., 2008). The formation of small-scale irregularities appears to be more likely in ionospheric regions with higher background electron density and steep electron density gradients (Keskinen et al., 2003;

Muella et al., 2008; Muella et al., 2010). Therefore, the amplitudes of ionospheric irregularities closely depend on background electron density (Wan et al., 2018) and steep N_e gradient globally as expected.

3.3 Magnetic and Solar Activity Dependence of Ionospheric Irregularities

The Swarm faceplate observations began near solar maximum in October 2014 and approached solar minimum of solar cycle 24 towards the end of 2018. Figure 10 shows the Kp index and 10.7 cm solar radio flux (F10.7) index in units of $10^{-22} \text{ W m}^{-2} \text{ Hz}^{-1}$ to summarize the magnetic and solar activity for the period 2014 – 2018. In general, solar cycle 24 was

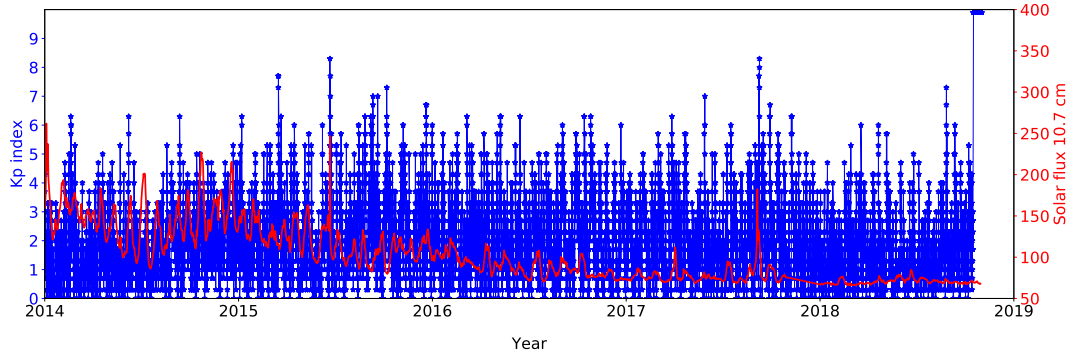
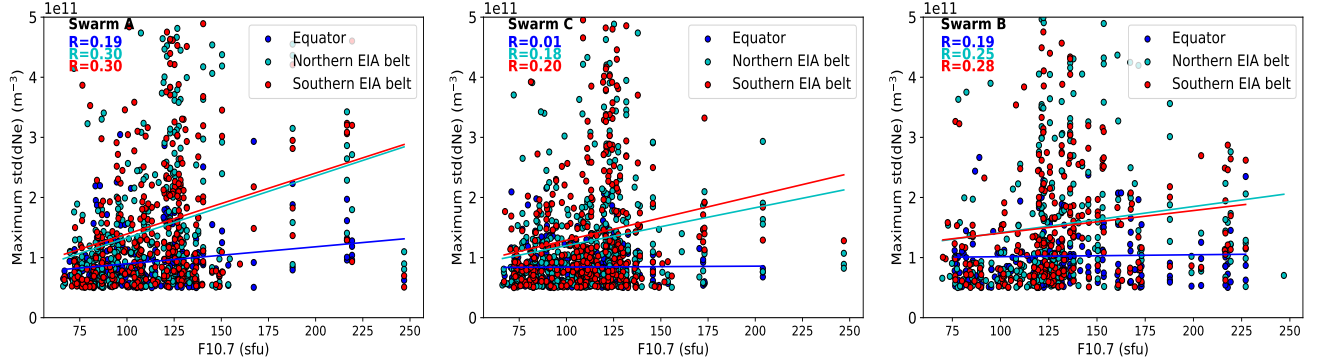


Figure 10. The 10.7 cm solar radio flux in solar flux units and the Kp index during 2014 – 2018.

characterized by very low solar activity compared to cycles that preceded it (Basu, 2013). The F10.7 varied often between about 50 sfu and 200 sfu for period 2014 – 2018. This period was also characterized by geomagnetic storms with $K_p > 3$. The effects of geomagnetic disturbances and changes in solar activity on ionospheric irregularity characteristics are of scientific interest and have been investigated in multiple studies (e.g. Palmroth et al., 2000; Sobral et al., 2002; Huang et al., 2002; Gentile et al., 2006; Stolle et al., 2006; Nishioka et al., 2008; Li et al., 2009; Basu et al., 2010; Sun et al., 2012; Carter et al., 2013; Huang et al., 2014). By using different criteria, Huang et al. (2014) determined the solar activity dependence of the occurrence of irregularities. In addition to solar activity, we also used different criteria to check the effects of magnetic variability on the distribution characteristics of irregularities in low latitudes.

Scatter plots of (a) $\text{std}(dN_e)$ and (b) $\text{std}(dN_e)/N_e$ as functions of F10.7 are shown in Fig. 11 for Swarm A, B, and C, independently. To check on the solar activity dependence of $\text{std}(dN_e)$ and $\text{std}(dN_e)/N_e$ at the equator and the EIA belts, the Swarm satellite passes were divided into three latitudinal ranges i.e, Equator ($\pm 5^\circ$ quasi-dipole latitude), Southern EIA region (-30° – -5° quasi-dipole latitude), and Northern EIA region ($+5^\circ$ – $+30^\circ$ quasi-dipole latitude) (see legend of Fig. 11). Each panel of Fig. 11 contains linear fits and the correlation coefficients R . In general, both $\text{std}(dN_e)$ and $\text{std}(dN_e)/N_e$ show weak positive correlation with F10.7 irrespective of the latitudinal range and this may be attributed to the small data-set used. However, it can be seen that the correlation between F10.7 and $\text{std}(dN_e)$ is higher at the EIA regions than at the equator. This also shows the symmetrical distribution of $\text{std}(dN_e)$ with high values obtained at the EIA belts than at the equator. There is hardly any difference observed between equatorial and off equatorial latitudes for the case of $\text{std}(dN_e)/N_e$. The results

(a) $\text{std}(dN_e)$



(a) $\text{std}(dN_e)/N_e$

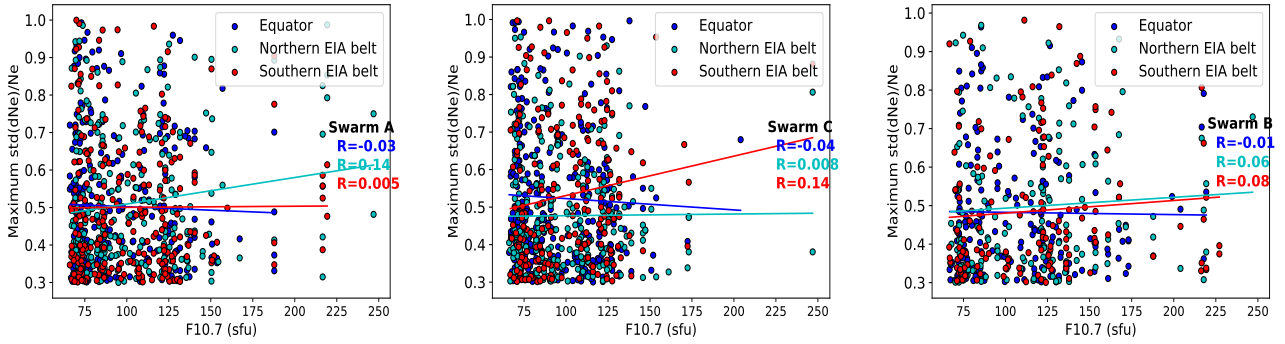


Figure 11. The distribution characteristics of (a) $\text{std}(dN_e)$ and (b) $\text{std}(dN_e)/N_e$ with respect to 10.7 cm solar radio flux in solar flux units for the period from October 2014 to October 2018. The black lines in each panel represent a linear fit to the data.

obtained for $\text{std}(dN_e)$ is consistent with that of Liu et al. (2007) who presented the solar activity dependence of the electron density at the equatorial anomaly regions.

For Swarm A alone, Fig. 12 shows the solar variation effect on seasonal and longitudinal distribution of $\text{std}(dN_e)$ and $\text{std}(dN_e)/N_e$. The results are divided into two major columns (distribution with respect to $\text{std}(dN_e)$ to the left and $\text{std}(dN_e)/N_e$ to the right). In each major column, there are two sub-columns, one for low solar activity ($F10.7 < 140$) and the other for moderate solar activity ($140 \leq F10.7 < 180$). It is important to point out that a reduced number of days were used to generate the climatology maps when $140 \leq F10.7 < 180$ compared to when $F10.7 < 140$. In Fig. 12, high $\text{std}(dN_e)$ values are often observed when $140 \leq F10.7 < 180$. On the contrary, high values of $\text{std}(dN_e)/N_e$ are mostly observed when $F10.7 < 140$. The $F10.7$ dependence obtained using $\text{std}(dN_e)$ is similar to the results presented by Huang et al. (2001), Su et al. (2006), Stolle et al. (2006). It is necessary to note that Huang et al. (2001), Su et al. (2006), Stolle et al. (2006) addressed the solar activity dependence of the occurrence rate of ionospheric irregularities. Wan et al. (2018) presented differences between the

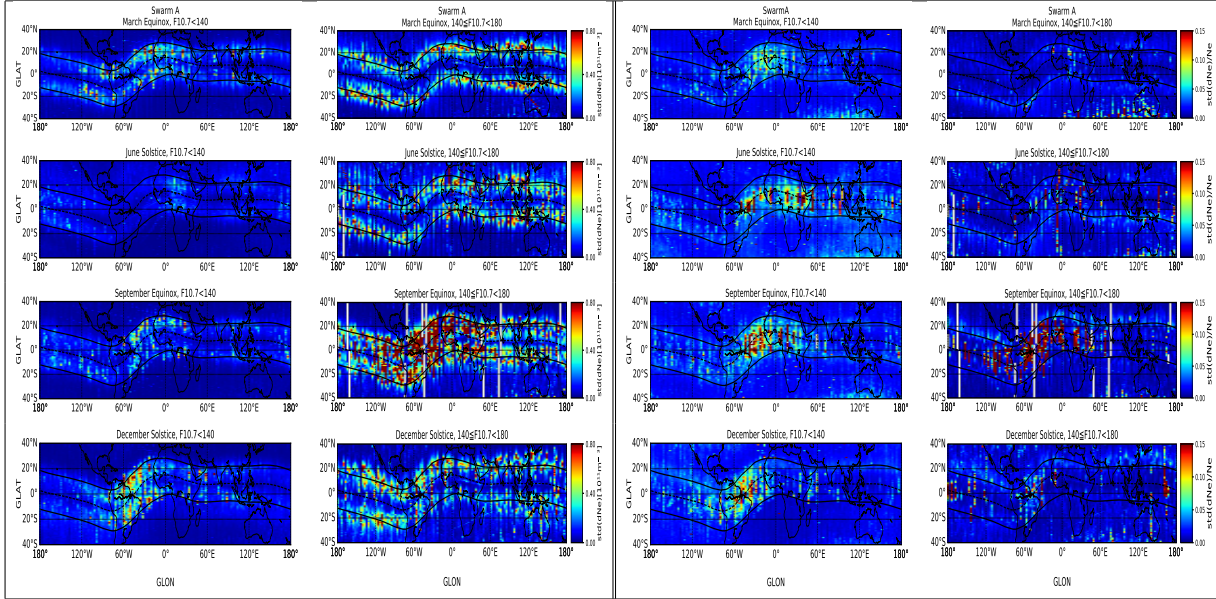


Figure 12. Solar activity effect on seasonal and longitudinal distribution of $\text{std}(dN_e)$ and $\text{std}(dN_e)/N_e$ for the period from October 2014 to October 2018: A case for Swarm A.

occurrence rate of ionospheric irregularities and their amplitudes in terms of the latitudinal and longitudinal distribution. However, in general, the seasonal and longitudinal distribution of $\text{std}(dN_e)$ presented in Fig. 12 shows a similar dependence on different levels of F10.7 as the occurrence rates. Using simulations from the Magnetosphere - Thermosphere - Ionosphere - Electrodynamics General Circulation Model (MTIEGCM), Vichare and Richmond (2005) showed that upward evening drift increases at a similar rate in all longitude sectors with solar activity. Therefore, the high occurrence of irregularities during moderate or high solar activity period may be because of the atmospheric driver for the zonal electric field which intensifies during moderate/high solar activity, causing an increase in the RTI growth rate.

Figure 13 presents scatter plots of (a) $\text{std}(dN_e)$ and (b) $\text{std}(dN_e)/N_e$ as functions of Kp. To generate Fig. 13, the Swarm passes were also split into equatorial and EIA latitudes, similar to Fig. 11. In general, the results show a weak correlation with Kp close to zero, irrespective of the method used to quantify the level of equatorial ionospheric irregularities and the latitude range. Close inspection of Fig. 13 shows that the correlation between $\text{std}(dN_e)$ and Kp was lowest at the EIA belts compared to that at the equator. There is hardly any difference observed between equatorial and off equatorial latitudes for the case of $\text{std}(dN_e)/N_e$. Dao et al. (2011) adopted the relative perturbation to quantify irregularities. Their reason for using the relative perturbation was that the absolute perturbation is correlated with the ambient ion density, which varies due to

(a) $\text{std}(dN_e)$

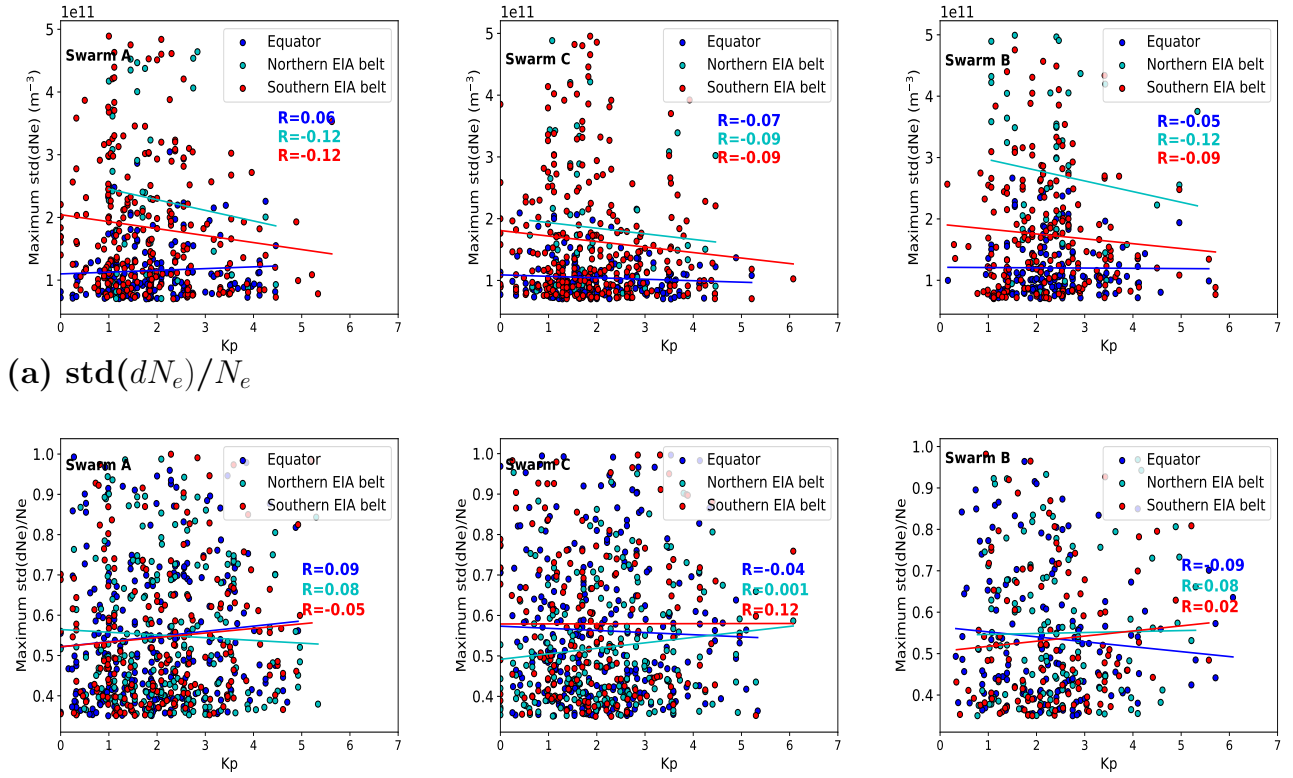


Figure 13. The distribution characteristics of (a) $\text{std}(dN_e)$ and (a) $\text{std}(dN_e)/N_e$ with respect to Kp index for the period from October 2014 to October 2018. The black lines in each panel represent a linear fit to the data.

several factors such as varying altitude. The results shown in Fig. 11 and 13 also show that $\text{std}(dN_e)$ is more sensitive to solar and magnetic variations compared to $\text{std}(dN_e)/N_e$. The differences in the correlation between F10.7 or Kp and $\text{std}(dN_e)$ or $\text{std}(dN_e)/N_e$ at equatorial and off-equatorial latitudes can be explained by the differences in background electron density and electron density gradients at the crests and trough. Using DMSP pre-midnight plasma data, Huang et al. (2001) found that the rate of occurrence of irregularity and geomagnetic activity were negatively correlated. We also examined the geomagnetic effect on the seasonal and longitudinal distribution of irregularities as presented in Fig. 14 for Swarm A. The results are divided into two major columns (distribution with respect to $\text{std}(dN_e)$ to the left and $\text{std}(dN_e)/N_e$ to the right). In each major column, there are two sub-segments, one for calm geomagnetic occasions ($Kp < 3$) and the other for geomagnetically disturbed periods ($Kp \geq 3$). From Fig. 14, high values of both $\text{std}(dN_e)$ and $\text{std}(dN_e)/N_e$ are frequently observed when $Kp < 3$. Palmroth et al. (2000) found a negative correlation between Kp and pre-midnight plasma depletions and a positive post-midnight correlation. They linked the distinction before and after local midnight to disturbed westward and eastward electrical fields, respectively.

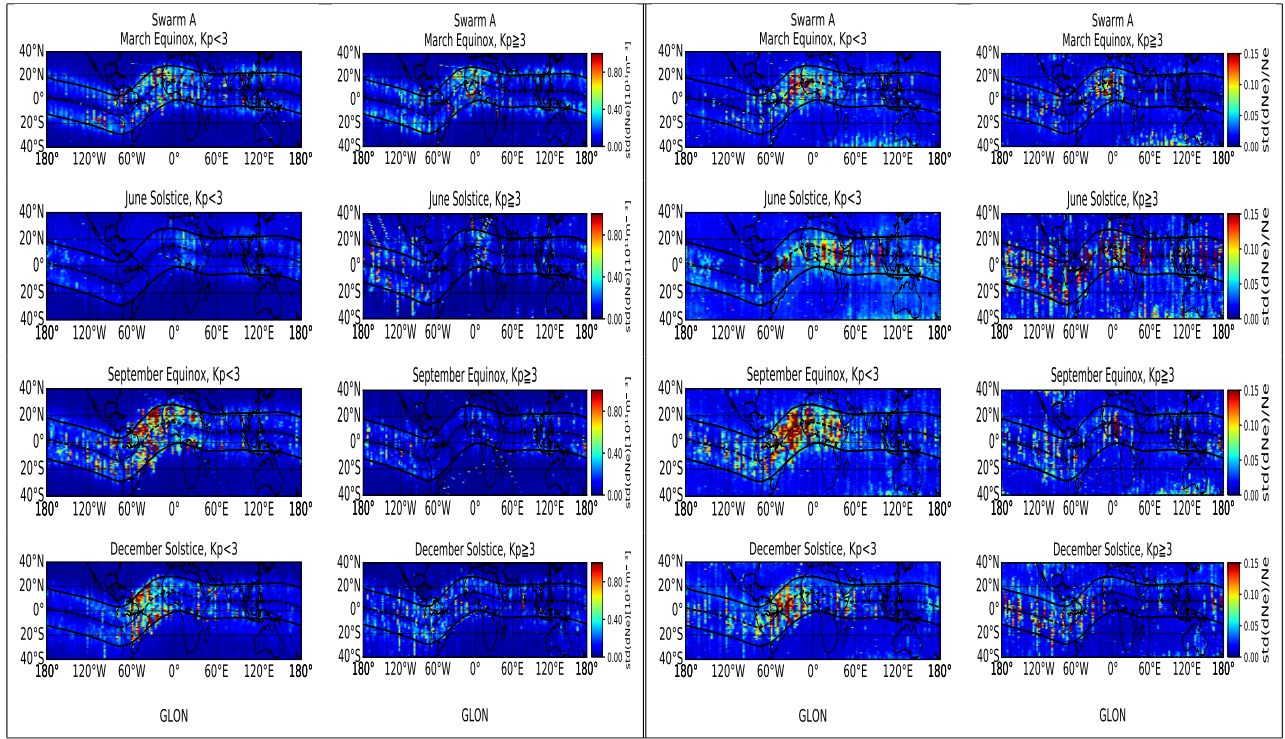


Figure 14. Geomagnetic effect on seasonal and longitudinal distribution of $\text{std}(dN_e)$ and $\text{std}(dN_e)/N_e$ for the period from October 2014 to October 2018: A case for Swarm A.

Stolle et al. (2006) checked the response of the occurrence of ionospheric irregularities to geomagnetic activity using magnetic field measurements made by CHAMP and they observed a weak relation between the occurrence of irregularities and the Kp index. Huang et al. (2001) also used DMSP measurements of plasma density and found that the occurrence rate of ionospheric irregularities for low Kp values were almost doubled compared to when Kp values are high. The geomagnetic activity affects irregularity occurrence in the low latitudes in two noteworthy ways i.e., by the brief entrance of auroral electric fields (Fejer, 1991; Kikuchi et al., 1996) and by the unsettling influence of dynamo effects (Blanc and Richmond, 1980). The second mechanism produces disturbance electric fields which last for a long time. The disturbance electric fields are westward after sunset (Blanc and Richmond, 1980; Huang et al., 2005; Abdu, 2012). It is important to note that the well-known trend in the longitudinal distribution of $\text{std}(dN_e)$ and $\text{std}(dN_e)/N_e$ for some seasons may not be clearly observed in Fig. 12 and Fig. 14 because of limited data after categorizing with respect to Kp or $F_{10.7}$.

4 Conclusions

In this study, we have used Swarm N_e data measured by the faceplate at a frequency of 16 Hz to examine the distribution characteristics of ionospheric irregularities in the equatorial and low latitude ionosphere from 2014–2018 when the 16 Hz data was available. Two methods (absolute and relative perturbation) were used to quantify the level of ionospheric irregularities.

- 5 Both methods were able to capture fluctuations in electron density along single satellite passes. Basing on the large number of Swarm low latitude crossings for the years 2014 – 2018, the local time, seasonal and longitudinal distribution of ionospheric irregularities in the low latitudes were examined. We demonstrated the importance of steep density gradients for the generation and distribution of ionospheric irregularities in the low latitudes. We also checked the effects of geomagnetic and solar activity on the distribution characteristics of ionospheric irregularities. The findings are summarized below:
- 10 (i) The local time distribution of irregularities quantified by the two methods showed that they are mainly nighttime phenomena as expected. Both $\text{std}(dN_e)$ and $\text{std}(dN_e)/N_e$ showed similar trends in percentage occurrence during the equinoxes and December solstice with a peak occurrence between 2000 LT and 2200 LT. The percentage occurrence was lowest in June solstice. Generally, the local time dependence of ionospheric irregularities is not much different when either $\text{std}(dN_e)$ or $\text{std}(dN_e)/N_e$ is used. However, the local time distribution according to $\text{std}(dN_e)$ is closely related to that
- 15 of $ROTI$ derived from ground-based stations.
- (ii) In general, the seasonal and longitudinal distribution of ionospheric irregularities as quantified by the Swarm 16 Hz N_e data was in agreement with past observations using other satellite missions irrespective of the method used. However, close inspection of the magnetic latitudes reveals that $\text{std}(dN_e)$ and $\text{std}(dN_e)/N_e$ showed different latitudinal distribution of ionospheric irregularities about the magnetic equator. The $\text{std}(dN_e)$ showed a symmetric distribution about the
- 20 magnetic equator with high magnitudes at latitudes of about $\pm 10^\circ - \pm 15^\circ$. The $\text{std}(dN_e)/N_e$ showed a peak at the quasi-dipole equator which gradually decreased towards higher latitudes.
- (iii) The seasonal and longitudinal distribution of electron density gradient was closely related to that of $\text{std}(dN_e)$ and $\text{std}(dN_e)/N_e$. Also, symmetry about the magnetic equator was observed with ∇N_e . Therefore, in addition to the background electron density presented by Wan et al. (2018), the longitudinal distribution of ionospheric irregularities also
- 25 depends on steep electron density gradients as expected.
- (iv) The $\text{std}(dN_e)$ showed a weak positive correlation with $F10.7$ and the correlation was even lower with $\text{std}(dN_e)/N_e$. Furthermore, $\text{std}(dN_e)$ in the EIA crest regions grew approximately linearly from the low to moderate solar activity, with higher correlation than that in the EIA trough region. The $F10.7$ dependence of the seasonal and longitudinal distribution of the ionospheric irregularities showed slightly different trends between $\text{std}(dN_e)$ and $\text{std}(dN_e)/N_e$. The discrepancy
- 30 between the two methods may be because of the limited data. In general, the distribution of ionospheric irregularities was still lower during the geomagnetically disturbed period than in quiet times. The correlation between $\text{std}(dN_e)$ and Kp was lowest at the EIA belts compared to that at the equator. The solar and magnetic activity dependence of $\text{std}(dN_e)/N_e$ hardly showed any difference in correlation between equatorial and off-equatorial latitudes.

Despite the obvious limitations of using polar-orbiting satellites to monitor equatorial electrodynamics, Swarm has provided credible distribution characteristics of ionospheric irregularities in the low latitude region with data accumulated in five years (2014 – 2018). In general, the initial observations of the distribution characteristics of ionospheric irregularities using the 16 Hz N_e data are in good agreement with earlier works that have addressed similar concepts. This has demonstrated the ability of Swarm faceplate N_e data for ionospheric studies. Therefore, the 16 Hz faceplate data is a useful measurement that can be adopted in order to understand ionospheric irregularities.

Data availability. The official website of Swarm is <http://earth.esa.int/swarm> and <ftp://swarm-diss.eo.esa.int> is the server for the distribution of Swarm data. IGS/GPS data for the equatorial and low latitude stations were downloaded from <http://garner.ucsd.edu/pub/rinex/>. The Kp index and F10.7 solar radio flux data used in this study were obtained from the website <http://omniweb.gsfc.nasa.gov/>.

Author contributions. Aol Sharon, Stephan Buchert, and Edward Jurua designed the concepts and implemented them. Aol Sharon prepared the manuscript with contributions from all co-authors.

Competing interests. No competing interests are present.

Acknowledgements. This study was sponsored by the International Science Program (ISP) of the Uppsala University, Sweden. The authors acknowledge ESA Swarm team for the Swarm mission and for providing the Swarm data. The official Swarm website is <http://earth.esa.int/swarm>, and the server for Swarm data distribution is <ftp://swarm-diss.eo.esa.int>. IGS/GPS data for the equatorial and low latitude stations were downloaded from <http://garner.ucsd.edu/pub/rinex/>. The Kp index and F10.7 solar radio flux data used in this study were obtained from the website <http://omniweb.gsfc.nasa.gov/>.

References

- Abdu, M.: Equatorial spread F/plasma bubble irregularities under storm time disturbance electric fields, *Journal of Atmospheric and Solar-Terrestrial Physics*, 75-76, 44–56, <https://doi.org/10.1016/j.jastp.2011.04.024>, 2012.
- Abdu, M. A.: Equatorial ionosphere thermosphere system: Electrodynamics and irregularities, *Advances in Space Research*, 35, 771–787, <https://doi.org/10.1016/j.asr.2005.03.150>, 2005.
- Basu, S.: The peculiar solar cycle 24—where do we stand?, in: *Journal of Physics: Conference Series*, vol. 440, p. 012001, IOP Publishing, <https://doi.org/10.1088/1742-6596/440/1/012001>, 2013.
- Basu, S., Basu, S., and Khan, B. K.: Model of equatorial scintillations from in-situ measurements, *Radio Science*, 11, 821–832, <https://doi.org/10.1029/rs011i010p00821>, 1976.
- 10 Basu, S., Groves, K. M., Quinn, J. M., and Doherty, P.: A comparison of TEC fluctuations and scintillations at Ascension Island, *Journal of Atmospheric and Solar-Terrestrial Physics*, 61, 1219–1226, [https://doi.org/10.1016/S1364-6826\(99\)00052-8](https://doi.org/10.1016/S1364-6826(99)00052-8), 1999.
- Basu, S., Basu, S., Valladares, C. E., Yeh, H.-C., Su, S.-Y., MacKenzie, E., Sultan, P. J., Aarons, J., Rich, F. J., Doherty, P., Groves, K. M., and Bullett, T. W.: Ionospheric effects of major magnetic storms during the International Space Weather Period of September and October 1999: GPS observations, VHF/UHF scintillations, and in situ density structures at middle and equatorial latitudes, *Journal of Geophysical Research: Space Physics*, 106, 30 389–30 413, <https://doi.org/10.1029/2001ja001116>, 2001.
- 15 Basu, S., Basu, S., MacKenzie, E., Bridgwood, C., Valladares, C. E., Groves, K. M., and Carrano, C.: Specification of the occurrence of equatorial ionospheric scintillations during the main phase of large magnetic storms within solar cycle 23, *Radio Science*, 45, RS5009, <https://doi.org/10.1029/2009RS004343>, 2010.
- Bhattacharyya, A., Groves, K. M., Basu, S., Kuenzler, H., Valladares, C. E., and Sheehan, R.: L-band scintillation activity and space-time structure of low-latitude UHF scintillations, *Radio Science*, 38, 4–1–4–9, <https://doi.org/10.1029/2002rs002711>, 2003.
- 20 Blanc, M. and Richmond, A.: The ionospheric disturbance dynamo, *Journal of Geophysical Research: Space Physics*, 85, 1669–1686, <https://doi.org/10.1029/ja085ia04p01669>, 1980.
- Buchert, S.: Extended EFI LP data FP release notes, ESA Technical Note, ftp://swarm-diss.eo.esa.int/Advanced/Plasma_Data/16_Hz_Faceplate_plasma_density, 2016.
- 25 Buchert, S., Zangerl, F., Sust, M., André, M., Eriksson, A., Wahlund, J.-E., and Opgenoorth, H.: SWARM observations of equatorial electron densities and topside GPS track losses, *grl*, 42, 2088–2092, <https://doi.org/10.1002/2015GL063121>, 2015.
- Burke, W. J., Huang, C. Y., Valladares, C. E., Machuzak, J. S., Gentile, L. C., and Sultan, P. J.: Multipoint observations of equatorial plasma bubbles, *Journal of Geophysical Research (Space Physics)*, 108, 1221, <https://doi.org/10.1029/2002JA009382>, 2003.
- Burke, W. J., Gentile, L. C., Huang, C. Y., Valladares, C. E., and Su, S. Y.: Longitudinal variability of equatorial plasma bubbles observed by DMSP and ROCSAT-1, *Journal of Geophysical Research (Space Physics)*, 109, A12301, <https://doi.org/10.1029/2004JA010583>, 2004.
- 30 Carter, B. A., Zhang, K., Norman, R., Kumar, V. V., and Kumar, S.: On the occurrence of equatorial F-region irregularities during solar minimum using radio occultation measurements, *Journal of Geophysical Research (Space Physics)*, 118, 892–904, <https://doi.org/10.1002/jgra.50089>, 2013.
- Chartier, A. T., Mitchell, C. N., and Miller, E. S.: Annual Occurrence Rates of Ionospheric Polar Cap Patches Observed Using Swarm, *Journal of Geophysical Research: Space Physics*, <https://doi.org/10.1002/2017ja024811>, 2018.
- 35 Costa, E., Roddy, P. A., and Ballenthin, J. O.: Statistical analysis of C/NOFS planar Langmuir probe data, *Annales Geophysicae*, 32, 773–791, <https://doi.org/10.5194/angeo-32-773-2014>, 2014.

- Dao, E., Kelley, M. C., Roddy, P., Retterer, J., Ballenthin, J. O., de La Beaujardiere, O., and Su, Y.-J.: Longitudinal and seasonal dependence of nighttime equatorial plasma density irregularities during solar minimum detected on the C/NOFS satellite, *Geophysical Research Letters*, 38, L10 104, <https://doi.org/10.1029/2011GL047046>, 110104, 2011.
- Fejer, B. G.: Low latitude electrodynamic plasma drifts: A review, *Journal of Atmospheric and Terrestrial Physics*, 53, 677–693, [https://doi.org/10.1016/0021-9169\(91\)90121-m](https://doi.org/10.1016/0021-9169(91)90121-m), 1991.
- Fejer, B. G., Scherliess, L., and de Paula, E. R.: Effects of the vertical plasma drift velocity on the generation and evolution of equatorial spreadF, *Journal of Geophysical Research: Space Physics*, 104, 19 859–19 869, <https://doi.org/10.1029/1999ja900271>, 1999.
- Gentile, L. C., Burke, W. J., and Rich, F. J.: A climatology of equatorial plasma bubbles from DMSP 1989–2004, *Radio Science*, 41, 1–7, <https://doi.org/10.1029/2005RS003340>, rS5S21, 2006.
- 10 Huang, C., Burke, W., Machuzak, J., Gentile, L., and Sultan, P.: Equatorial plasma bubbles observed by DMSP satellites during a full solar cycle: Toward a global climatology, *Journal of Geophysical Research: Space Physics*, 107, <https://doi.org/10.1029/2002ja009452>, 2002.
- Huang, C.-M., Richmond, A., and Chen, M.-Q.: Theoretical effects of geomagnetic activity on low-latitude ionospheric electric fields, *Journal of Geophysical Research: Space Physics*, 110, <https://doi.org/10.1029/2004ja010994>, 2005.
- Huang, C.-S., de La Beaujardiere, O., Roddy, P. A., Hunton, D. E., Pfaff, R. F., Valladares, C. E., and Ballenthin, J. O.: Evolution of
15 equatorial ionospheric plasma bubbles and formation of broad plasma depletions measured by the C/NOFS satellite during deep solar minimum, *Journal of Geophysical Research: Space Physics*, 116, <https://doi.org/10.1029/2010ja015982>, 2011.
- Huang, C.-S., de La Beaujardiere, O., Roddy, P. A., Hunton, D. E., Ballenthin, J. O., and Hairston, M. R.: Generation and characteristics of equatorial plasma bubbles detected by the C/NOFS satellite near the sunset terminator, *Journal of Geophysical Research: Space Physics*, 117, n/a–n/a, <https://doi.org/10.1029/2012ja018163>, 2012.
- 20 Huang, C.-S., La Beaujardiere, O., Roddy, P., Hunton, D., Liu, J., and Chen, S.: Occurrence probability and amplitude of equatorial ionospheric irregularities associated with plasma bubbles during low and moderate solar activities (2008–2012), *Journal of Geophysical Research: Space Physics*, 119, 1186–1199, <https://doi.org/10.1002/2013ja019212>, 2014.
- Huang, C. Y., Burke, W. J., Machuzak, J. S., Gentile, L. C., and Sultan, P. J.: DMSP observations of equatorial plasma bubbles in the topside ionosphere near solar maximum, *Journal of Geophysical Research*, 106, 8131–8142, <https://doi.org/10.1029/2000JA000319>, 2001.
- 25 Hysell, D. L. and Seyler, C. E.: A renormalization group approach to estimation of anomalous diffusion in the unstable equatorial region, *Journal of Geophysical Research: Space Physics*, 103, 26 731–26 737, <https://doi.org/10.1029/98ja02616>, 1998.
- Jin, Y., Spicher, A., Xiong, C., Clausen, L. B. N., Kervalishvili, G., Stolle, C., and Miloch, W. J.: Ionospheric Plasma Irregularities Characterized by the Swarm Satellites: Statistics at High Latitudes, *Journal of Geophysical Research: Space Physics*, pp. n/a–n/a, <https://doi.org/10.1029/2018ja026063>, 2019.
- 30 Kelley, M.: *The Earth’s Ionosphere: Plasma Physics and Electrodynamics*, International Geophysics, Elsevier Science, <https://books.google.co.uk/books?id=3GIWQnjBQNgC>, 2009.
- Keskinen, M. J., Ossakow, S. L., and Fejer, B. G.: Three-dimensional nonlinear evolution of equatorial ionospheric spread-F bubbles, *Geophysical Research Letters*, 30, <https://doi.org/10.1029/2003gl017418>, 2003.
- Kikuchi, T., Lühr, H., Kitamura, T., Saka, O., and Schlegel, K.: Direct penetration of the polar electric field to the equator during a DP 2 event
35 as detected by the auroral and equatorial magnetometer chains and the EISCAT radar, *Journal of Geophysical Research: Space Physics*, 101, 17 161–17 173, <https://doi.org/10.1029/96ja01299>, 1996.
- Kil, H. and Heelis, R. A.: Global distribution of density irregularities in the equatorial ionosphere, *Journal of Geophysical Research*, 103, 407–418, <https://doi.org/10.1029/97JA02698>, 1998.

- Kil, H., DeMajistre, R., and Paxton, L. J.: F-region plasma distribution seen from TIMED/GUVI and its relation to the equatorial spread F activity, *Geophysical Research Letters*, 31, L05810, <https://doi.org/10.1029/2003GL018703>, 2004.
- Kil, H., Paxton, L. J., and Oh, S.-J.: Global bubble distribution seen from ROCSAT-1 and its association with the evening prereversal enhancement, *Journal of Geophysical Research: Space Physics*, 114, n/a–n/a, <https://doi.org/10.1029/2008ja013672>, 2009.
- 5 Kil, H., Paxton, L. J., Jee, G., and Nikoukar, R.: Plasma blobs associated with medium-scale traveling ionospheric disturbances, *Geophysical Research Letters*, <https://doi.org/10.1029/2019gl082026>, 2019.
- Kintner, P. M., Ledvina, B. M., and de Paula, E. R.: GPS and ionospheric scintillations, *Space Weather*, 5, 09003, <https://doi.org/10.1029/2006SW000260>, 2007.
- Knudsen, D. J., Burchill, J. K., Buchert, S. C., Eriksson, A. I., Gill, R., Wahlund, J.-E., Åhlen, L., Smith, M., and Moffat, B.: Thermal ion imagers and Langmuir probes in the Swarm electric field instruments, *Journal of Geophysical Research: Space Physics*, <https://doi.org/10.1002/2016ja022571>, 2017.
- 10 Kumar, S.: Morphology of equatorial plasma bubbles during low and high solar activity years over Indian sector, *Astrophysics and Space Science*, 362, <https://doi.org/10.1007/s10509-017-3074-3>, 2017.
- Li, G., Ning, B., Liu, L., Wan, W., Liu, J., et al.: Effect of magnetic activity on plasma bubbles over equatorial and low-latitude regions in East Asia, in: *Annales geophysicae: atmospheres, hydrospheres and space sciences*, vol. 27, pp. 303–312, <https://doi.org/10.5194/angeo-27-303-2009>, 2009.
- 15 Liu, H., Lühr, H., Henize, V., and Köhler, W.: Global distribution of the thermospheric total mass density derived from CHAMP, *Journal of Geophysical Research (Space Physics)*, 110, A04301, <https://doi.org/10.1029/2004JA010741>, 2005.
- Liu, H., Stolle, C., Förster, M., and Watanabe, S.: Solar activity dependence of the electron density in the equatorial anomaly regions observed by CHAMP, *Journal of Geophysical Research: Space Physics*, 112, <https://doi.org/10.1029/2007JA012616>, 2007.
- 20 Lühr, H., Xiong, C., Park, J., and Rauberg, J.: Systematic study of intermediate-scale structures of equatorial plasma irregularities in the ionosphere based on CHAMP observations, *Frontiers in Physics*, 2, 15, <https://doi.org/10.3389/fphy.2014.00015>, 2014.
- Ma, G. and Maruyama, T.: A super bubble detected by dense GPS network at east Asian longitudes, *Geophysical Research Letters*, 33, <https://doi.org/10.1029/2006gl027512>, 2006.
- 25 Makela, J., Ledvina, B., Kelley, M., and Kintner, P.: Analysis of the seasonal variations of equatorial plasma bubble occurrence observed from Haleakala, Hawaii, in: *Annales Geophysicae*, vol. 22, pp. 3109–3121, <https://doi.org/10.5194/angeo-22-3109-2004>, 2004.
- McClure, J. P., Singh, S., Bamgboye, D. K., Johnson, F. S., and Kil, H.: Occurrence of equatorial F region irregularities: Evidence for tropospheric seeding, *Journal of Geophysical Research*, 103, 29 119–29 136, <https://doi.org/10.1029/98JA02749>, 1998.
- Muella, M., de Paula, E., Kantor, I., Batista, I., Sobral, J., Abdu, M., Kintner, P., Groves, K., and Smorigo, P.: GPS L-band scintillations and ionospheric irregularity zonal drifts inferred at equatorial and low-latitude regions, *Journal of Atmospheric and Solar-Terrestrial Physics*, 70, 1261–1272, <https://doi.org/10.1016/j.jastp.2008.03.013>, 2008.
- 30 Muella, M. T. A. H., Kherani, E. A., de Paula, E. R., Cerruti, A. P., Kintner, P. M., Kantor, I. J., Mitchell, C. N., Batista, I. S., and Abdu, M. A.: Scintillation-producing Fresnel-scale irregularities associated with the regions of steepest TEC gradients adjacent to the equatorial ionization anomaly, *Journal of Geophysical Research (Space Physics)*, 115, A03301, <https://doi.org/10.1029/2009JA014788>, 2010.
- 35 Nishioka, M., Saito, A., and Tsugawa, T.: Occurrence characteristics of plasma bubble derived from global ground-based GPS receiver networks, *Journal of Geophysical Research: Space Physics*, 113, <https://doi.org/10.1029/2007ja012605>, 2008.

- Nishioka, M., Basu, S., Basu, S., Valladares, C. E., Sheehan, R. E., Roddy, P. A., and Groves, K. M.: C/NOFS satellite observations of equatorial ionospheric plasma structures supported by multiple ground-based diagnostics in October 2008, *Journal of Geophysical Research: Space Physics*, 116, n/a–n/a, <https://doi.org/10.1029/2011ja016446>, 2011.
- Otsuka, Y.: Review of the generation mechanisms of post-midnight irregularities in the equatorial and low-latitude ionosphere, *Progress in Earth and Planetary Science*, 5, <https://doi.org/10.1186/s40645-018-0212-7>, 2018.
- Palmroth, M., Laakso, H., Fejer, B. G., and Pfaff Jr, R.: DE 2 observations of morningside and eveningside plasma density depletions in the equatorial ionosphere, *Journal of Geophysical Research: Space Physics*, 105, 18 429–18 442, <https://doi.org/10.1029/1999ja005090>, 2000.
- Park, J., Min, K. W., Kim, V. P., Kil, H., Lee, J.-J., Kim, H.-J., Lee, E., and Lee, D. Y.: Global distribution of equatorial plasma bubbles in the premidnight sector during solar maximum as observed by KOMPSAT-1 and Defense Meteorological Satellite Program F15, *Journal of Geophysical Research: Space Physics*, 110, <https://doi.org/10.1029/2004ja010817>, 2005.
- Pi, X., Mannucci, A. J., Lindqwister, U. J., and Ho, C. M.: Monitoring of global ionospheric irregularities using the Worldwide GPS Network, *Geophysical Research letter*, 24, 2283–2286, <https://doi.org/10.1029/97GL02273>, 1997.
- Portillo, A., Herraiz, M., Radicella, S. M., and Ciruolo, L.: Equatorial plasma bubbles studied using African slant total electron content observations, *Journal of Atmospheric and Solar-Terrestrial Physics*, 70, 907–917, <https://doi.org/10.1016/j.jastp.2007.05.019>, 2008.
- Rao, P. V. S. R., Jayachandran, P. T., Ram, P. S., Rao, B. V. R., Prasad, D. S. V. V. D., and Bose, K. K.: Characteristics of VHF radiowave scintillations over a solar cycle (1983–1993) at a low-latitude station: Waltair (17.7°N, 83.3°E), *Annales Geophysicae*, 15, 729–733, <https://doi.org/10.1007/s00585-997-0729-3>, 1997.
- Rishbeth, H.: Polarization fields produced by winds in the equatorial F-region, *Planetary and Space Science*, 19, 357–369, [https://doi.org/10.1016/0032-0633\(71\)90098-5](https://doi.org/10.1016/0032-0633(71)90098-5), 1971.
- Schunk, R. W. and Nagy, A. F.: *Ionospheres: physics, plasma physics, and chemistry*, Cambridge Atmospheric and Space Science Series, Cambridge, Cambridge, 2 edn., 2009.
- Sharma, A. K., Gurav, O. B., Gaikwad, H. P., Chavan, G. A., Nade, D. P., Nikte, S. S., Ghodpage, R. N., and Patil, P. T.: Study of equatorial plasma bubbles using all sky imager and scintillation technique from Kolhapur station: a case study, *Astrophysics and Space Science*, 363, <https://doi.org/10.1007/s10509-018-3303-4>, <https://doi.org/10.1007/s10509-018-3303-4>, 2018.
- Sobral, J. H. A., Abdu, M. A., Takahashi, H., Taylor, M. J., de Paula, E. R., Zamlutti, C. J., de Aquino, M. G., and Borba, G. L.: Ionospheric plasma bubble climatology over Brazil based on 22 years (1977–1998) of 630nm airglow observations, *Journal of Atmospheric and Solar-Terrestrial Physics*, 64, 1517–1524, [https://doi.org/10.1016/S1364-6826\(02\)00089-5](https://doi.org/10.1016/S1364-6826(02)00089-5), 2002.
- Spogli, L., Cesaroni, C., Di Mauro, D., Pezzopane, M., Alfonsi, L., Musicò, E., Povero, G., Pini, M., Dovis, F., Romero, R., Linty, N., Abadi, P., Nuraeni, F., Husin, A., Le Huy, M., Lan, T. T., La, T. V., Pillat, V. G., and Floury, N.: Formation of ionospheric irregularities over Southeast Asia during the 2015 St. Patrick’s Day storm, *Journal of Geophysical Research: Space Physics*, 121, 12,211–12,233, <https://doi.org/10.1002/2016JA023222>, 2016.
- Stolle, C., Lühr, H., Rother, M., and Balasis, G.: Magnetic signatures of equatorial spread F as observed by the CHAMP satellite, *Journal of Geophysical Research (Space Physics)*, 111, A02304, <https://doi.org/10.1029/2005JA011184>, 2006.
- Su, S.-Y., Liu, C., Ho, H., and Chao, C.: Distribution characteristics of topside ionospheric density irregularities: Equatorial versus midlatitude regions, *Journal of Geophysical Research: Space Physics*, 111, <https://doi.org/10.1029/2005ja011330>, 2006.

- Su, S.-Y., Chao, C. K., and Liu, C. H.: Cause of different local time distribution in the postsunset equatorial ionospheric irregularity occurrences between June and December solstices, *Journal of Geophysical Research: Space Physics*, 114, n/a–n/a, <https://doi.org/10.1029/2008ja013858>, 2009.
- Sun, Y. Y., Liu, J. Y., and Lin, C. H.: A statistical study of low latitude F region irregularities at Brazilian longitudinal sector response to geomagnetic storms during post-sunset hours in solar cycle 23, *Journal of Geophysical Research: Space Physics*, 117, A03 333, <https://doi.org/10.1029/2011JA017419>, 2012.
- Tsunoda, R. T.: Control of the seasonal and longitudinal occurrence of equatorial scintillations by the longitudinal gradient in integrated E region Pedersen conductivity, *Journal of Geophysical Research*, 90, 447–456, <https://doi.org/10.1029/JA090iA01p00447>, 1985.
- Vichare, G. and Richmond, A. D.: Simulation study of the longitudinal variation of evening vertical ionospheric drifts at the magnetic equator during equinox, *Journal of Geophysical Research (Space Physics)*, 110, A05304, <https://doi.org/10.1029/2004JA010720>, 2005.
- Wan, X., Xiong, C., Rodriguez-Zuluaga, J., Kervalishvili, G. N., Stolle, C., and Wang, H.: Climatology of the Occurrence Rate and Amplitudes of Local Time Distinguished Equatorial Plasma Depletions Observed by Swarm Satellite, *Journal of Geophysical Research, Space Physics*, 123, 3014–3026, <https://doi.org/10.1002/2017JA025072>, 2018.
- Woodman, R. F.: Spread F – an old equatorial aeronomy problem finally resolved?, *Annales Geophysicae*, 27, 1915–1934, <https://doi.org/10.5194/angeo-27-1915-2009>, <https://doi.org/10.5194/angeo-27-1915-2009>, 2009.
- Woodman, R. F. and La Hoz, C.: Radar observations of F region equatorial irregularities, *Journal of Geophysical Research*, 81, 5447–5466, <https://doi.org/10.1029/JA081i031p05447>, 1976.
- Xiong, C., Park, J., Lühr, H., Stolle, C., and Ma, S. Y.: Comparing plasma bubble occurrence rates at CHAMP and GRACE altitudes during high and low solar activity, *Annales Geophysicae*, 28, 1647–1658, <https://doi.org/10.5194/angeo-28-1647-2010>, 2010.
- Xiong, C., Lühr, H., Ma, S., Stolle, C., and Fejer, B.: Features of highly structured equatorial plasma irregularities deduced from CHAMP observations., *Annales Geophysicae* (09927689), 30, <https://doi.org/10.5194/angeo-30-1259-2012>, 2012.
- Xiong, C., Stolle, C., Juan, R. Z., and Siemes, C.: Losses of GPS signals onboard the Swarm satellites and its relation to strong plasma depletions, *AGU Fall Meeting Abstracts*, pp. SA12A–01, 2016a.
- Xiong, C., Stolle, C., and Lühr, H.: The Swarm satellite loss of GPS signal and its relation to ionospheric plasma irregularities, *Space Weather*, 14, 563–577, <https://doi.org/10.1002/2016SW001439>, 2016b.
- Xiong, C., Stolle, C., Lühr, H., Park, J., Fejer, B. G., and Kervalishvili, G. N.: Scale analysis of equatorial plasma irregularities derived from Swarm constellation, *Earth, Planets and Space*, 68, 121, <https://doi.org/10.1186/s40623-016-0502-5>, 2016.
- Yang, Z. and Liu, Z.: Correlation between ROTI and Ionospheric Scintillation Indices using Hong Kong low-latitude GPS data, *GPS Solutions*, 20, 815–824, <https://doi.org/10.1007/s10291-015-0492-y>, 2015.
- Yizengaw, E. and Groves, K. M.: Longitudinal and Seasonal Variability of Equatorial Ionospheric Irregularities and Electrodynamics, *Space Weather*, 16, 946–968, <https://doi.org/10.1029/2018sw001980>, 2018.
- Yizengaw, E., Moldwin, M. B., Zesta, E., Biouele, C. M., Damtie, B., Mebrahtu, A., Rabiou, B., Valladares, C. F., and Stoneback, R.: The longitudinal variability of equatorial electrojet and vertical drift velocity in the African and American sectors, *Annales Geophysicae*, 32, 231–238, <https://doi.org/10.5194/angeo-32-231-2014>, 2014.
- Zakharenkova, I., Astafyeva, E., and Cherniak, I.: GPS and in situ Swarm observations of the equatorial plasma density irregularities in the topside ionosphere, *Earth, Planets, and Space*, 68, 120, <https://doi.org/10.1186/s40623-016-0490-5>, 2016.
- Zargham, S. and Seyler, C. E.: Collisional and inertial dynamics of the ionospheric interchange instability, *Journal of Geophysical Research*, 94, 9009, <https://doi.org/10.1029/ja094ia07p09009>, 1989.

Zou, Y. and Wang, D.: A study of GPS ionospheric scintillations observed at Guilin, *Journal of Atmospheric and Solar-Terrestrial Physics*, 71, 1948–1958, <https://doi.org/10.1016/j.jastp.2009.08.005>, 2009.