

Anonymous reviewer #1

This paper may be publishable because it provides a reference to the researchers who are interested in the use of the GPS-RO data for the study of ionospheric irregularities.

This paper still has lots of problems in writing. I do not expect perfect English, but this current version does not meet the minimum standard of the international journal. Below I mention just some of them at the beginning of the paper.

→ **We would like to thank the reviewer for his time in going through the paper and providing constructive inputs to improve the quality of the current manuscript. We have considered reviewer's valuable suggestions and comments and included them in our revised manuscript.**

Line 1-2: Grammatically, "which" after comma takes the whole sentence, but here "which" meant bubbles. The authors did not use the GPS-RO technique to study bubbles or their global distribution; the authors used the scintillation data provided by the GPS-RO technique for the study of bubbles.

→ **We have noted this and made subsequent changes in the manuscript and also agree on the reviewer's comment on the scintillation data from the GPS-RO technique for the study of bubbles and therefore included reviewer's suggestion in the abstract.**

Line 5: I do not know the meaning of "biased". Here again, "which" was not used correctly.

→ **We have replaced the word "biased" with "influenced" in the manuscript and also tried to correct the "which" that was used incorrectly.**

Line 6 "Moreover" and Line 7 "Furthermore" are not necessary.

→ **According to review's suggestion, we have removed the words in the revised manuscript.**

Line 10: "which appeared in congruence with" is not a good expression. I would say "which is consistent with"

→ **We are grateful to the reviewer for point this out and providing with a suggestion that we have included in the revised manuscript.**

Line 16 "large". It is a vague expression. What size is "large"?

→ **We have reconstructed a clearer sentence in the manuscript taking into consideration reviewer's suggestion.**

Line 18: I do not know the meaning of “serious implications”.

→ In the revised manuscript, we have removed “serious implication” and replaced it with “attritions”.

I did not notice the small magnitude of the occurrence probability (Figure 3), but the other reviewer correctly pointed out. Strong scintillations are nighttime phenomena. Then, I would calculate the occurrence probability using the data at night instead of using the data at all local times. That’s what people usually do.

→ According to reviewer’s suggestion, we have focussed on night time occurrence and calculated the occurrence probability by restricting the local time between 18 and 06 LT.

Strong scintillations are nighttime phenomena, then I would make plots of the LT distribution making midnight be at the middle of plots. In other words, I would make x-range in Figure 4 and other plots from 12 to 12 LT (or 18 – 06 LT) instead of from 0 to 24 LT. Then, we can see the continuous variation of the bubble distribution with LT. This is what people usually do.

→ As per reviewer’s suggestion, we have changed the x-range in the Figure 4 from 12 to 12 LT to have continuous variation of the bubble distribution with midnight at the middle of plot.

We would like again to thank the reviewer for his in-depth review. Taking into consideration all the suggestions and inputs recommended by the reviewer, we are hopeful that this manuscript stands up to the standards of scientific writing.

Anonymous reviewer #2

We would like to thank the reviewer for his time in reviewing this manuscript and immensely grateful for the encouragement on the manuscript.

Occurrence climatology of equatorial plasma bubbles derived using FormoSat-3/COSMIC GPS radio occultation data

Ankur Kepkar^{1,2}, Christina Arras², Jens Wickert^{1,2}, Harald Schuh^{1,2}, Mahdi Alizadeh^{1,3}, and Lung-Chih Tsai⁴

¹Technische Universität Berlin, Germany

²German Research Centre for Geosciences GFZ, Potsdam, Germany

³K.N. Toosi University of Technology, Tehran, Iran

⁴National Central University, Chung-Li, Taiwan

Correspondence: Ankur Kepkar (kepkar@gfz-potsdam.de)

Abstract. The Global Positioning System - Radio Occultation (GPS-RO) observations from FormoSat-3/COSMIC are used to comprehend the global distribution of equatorial plasma bubbles which are characterized by depletion regions of plasma in the F-region of the ionosphere. Plasma bubbles that cause intense scintillation of the radio signals are identified based on the S4 index derived from the 1 Hz raw signal-to-noise ratio measurements between 2007 and 2017. The analyses revealed that bubbles **biased influenced** by background plasma density occurred along the geomagnetic equator and had an occurrence peak around the dip equator during high solar activity. **Moreover,** The peak shifted between African and American sector depending on different solar conditions. **Furthermore,** Plasma bubbles usually developed around 1900 Local Time (LT) with maximum occurrence around 2100LT during solar maximum and \sim 2200LT during solar minimum. The occurrence of bubbles showed a strong dependence on longitudes, seasons, and solar cycle with the peak occurrence rate in the African sector around March equinox during high solar activity, which **appeared-in-congruence is consistent** with previous studies. The GPS-RO technique allows an extended analysis on the altitudinal distribution of global equatorial plasma bubbles obtained from high vertical resolution profiles. Thus, making it a convenient tool, which could be further used with other techniques to provide a comprehensive view of such ionospheric irregularities.

Copyright statement. TEXT

15 1 Introduction

The Equatorial Plasma Bubbles (EPBs) **large** are regions of plasma depletion, which are prominent in the F-region of the ionosphere. These EPBs generally exist in clusters (Singh et al., 1997) and often deter the radio waves (e.g., GPS signals) penetrating through it, causing serious attrition on its applications. These plasma bubbles primarily occur at low latitudes and induce rapid fluctuations in the amplitude as well as phase of the radio signals. This distortion is often termed as scintillation (Yeh and Liu, 1982). EPBs are also known by its generic name as Equatorial Spread F (ESF), which are perceived as a spread

or diffused echoes in the ionosonde readings (Booker and Wells, 1938; Whalen, 1997). Besides, they appear as plume-like structures in radar observations (Kudeki and Bhattacharyya, 1999) and emission depletions in airglow images (Sahai et al., 2000).

EPBs are a night-time phenomenon and are initiated through the Rayleigh-Taylor Instability (RTI) mechanism in the bottomside of the F-region (Sultan, 1996; Woodman, 2009). Various theories related to seed perturbation like atmospheric gravity waves (AGWs) as well as vertical shear of zonal plasma drift are considered amongst the probable source to trigger the RTI mechanism (Kudeki et al., 2007; Abdu et al., 2009; Huang et al., 2011; Taori et al., 2011). Other than these seed sources, off-equatorial ionospheric phenomena such as sporadic-E layers and medium-scale traveling ionospheric disturbances have also been contemplated for possible seed activity along the equipotential magnetic field lines (Abdu et al., 2003; Tsunoda, 2007). However, AGWs with wavelengths larger than 100 km seed equatorial plasma bubble by causing perturbation in the lower thermosphere, i.e., E-region, which then maps it onto the bottom side of F-region along the magnetic field lines through electro-dynamical coupling during the late afternoon period (Röttger, 1981; Tsunoda, 2010; Huang et al., 2011; Retterer and Roddy, 2014; Tsunoda, 2015). Furthermore, an important activity at the equator, i.e., Pre-Reversal Enhancement (PRE), plays a significant role in influencing the plasma bubble growth and vertically lifting it after the sunset. PRE is a phenomenon that causes an enhancement in the zonal eastward electric field at the sunset terminator before the electric field reverses in the westward direction during the night (Abadi et al., 2015). This phenomenon creates a vertical electromagnetic ($E \times B$) drift that influences the growth rate of the RTI by lifting the plasma to the height where the ion-neutral collision rate is low (Farley et al., 1970; Fejer and Kelley, 1980; Abadi et al., 2015). EPBs occur within hours right after sunset, and the degree to which it extends in the latitude and altitude depends solely on the magnitude of PRE (Farley et al., 1970; Abdu et al., 2003; Abadi et al., 2015).

The depletions in the equatorial plasma were initially identified from in-situ satellite measurements by Hanson and Sanatani (1973) and later confirmed by McClure et al. (1977). Since then, various techniques such as ground based observations (Woodman and La Hoz, 1976; Farley et al., 1970; Whalen, 1997; Kudeki and Bhattacharyya, 1999), airglow imagers (Sahai et al., 1994, 2000; Martinis and Mendillo, 2007), satellite-based in-situ measurements (Burke et al., 2004a; Park et al., 2005; Gentile et al., 2006; Stolle et al., 2006; Xiong et al., 2010; Dao et al., 2011) as well as Global Navigation Satellite Systems (GNSS) ground-based measurements (Basu et al., 1999; Carrano and Groves, 2007; Nishioka et al., 2008) have been used to study EPBs. Although these techniques contributed enormously towards the understanding of the ionospheric irregularities, they lacked in delivering critical information in one aspect or the other. For example, the ground-based sounders and GNSS ground receivers, despite that they provide crucial information related to the ionosphere and are globally distributed, remain restricted to a landmass. On the other hand, the in-situ satellite instruments explore the prevailing conditions in the ionosphere along the orbital track but fail to provide crucial insight into the vertical ionospheric conditions. Nonetheless, in recent times, the GPS-RO technique has been widely used for ionospheric investigation owing to its extensive sounding capabilities along with high-resolution altitudinal measurements; both globally as well as vertically for envisaging four-dimensional prospect of the ionosphere (Wickert et al., 2001; Arras et al., 2008; Wickert et al., 2009; Carter et al., 2013; Liu et al., 2016; Tsai et al., 2017).

The GPS-RO is a space-based technique which involves two satellites, i.e., GPS and Low Earth Orbiter (LEO), operating on a high-low satellite tracking (HL-SST) mode (Wickert et al., 2001, 2009). The operational principle is mainly based on LEO satellites tracking the radio signals from the GPS satellites, causing the signal to bend as it penetrates the Earth's ionosphere and atmosphere. The GPS-RO profiles are retrieved from bending angle, which is the fundamental observable, obtained from bending of the signal as a function of asymptotic ray-miss distance from the center of curvature of the Earth under the assumption of spherical symmetry (Kursinski et al., 1997, 1999). In the ionosphere, electron density profiles are obtained using the onion peeling algorithm (Lei et al., 2007), while in the stratosphere and troposphere, from refractivity profiles, temperature and pressure profiles are obtained (Wickert et al., 2002; Jakowski et al., 2004). In addition to providing such a wealth of information, this technique mitigates various technical shortcomings by operating under all weather conditions and providing long term stability without requiring calibration (Rocken et al., 1997). Due to GPS-LEO geometry, this technique provides measurements with a high vertical resolution that are globally distributed. In the past, various LEO missions contributed enormously towards radio occultation operations that led to the rise of one mission to another, starting from GPS/MET (GPS/METeorology), CHAMP (CHAllenging Minisatellite Payload), GRACE (GRAVity recovery and Climate Experiment), FormoSat-3/COSMIC (Formosa Satellite -3/Constellation Observing System for Meteorology, Ionosphere, and Climate) (Anthes et al., 2008; Wickert et al., 2009; Arras et al., 2010) to FormoSat-7/COSMIC 2 mission.

2 Data analysis

In this study, EPBs are analyzed using the GPS-RO measurements from the FormoSat-3/COSMIC satellites. The FormoSat-3/COSMIC mission is a constellation of six micro-satellites, which provided $\sim 2,000$ continuous real-time neutral atmospheric and ionospheric profiles daily (Anthes et al., 2008). However, after orbiting for more than 13 years and exceeding its planned lifespan of five years, the number of RO profiles has significantly reduced to approximately 20% since the middle of 2016. This is because currently only one out of six satellites is operational under degraded mode (Chu et al., 2018). The present study comprises of measurements taken during the years 2007-2017 that includes nearly 5.5 million ionospheric profiles.

For investigating EPBs, *ionPhs* (ionospheric excess Phases) data is used which belongs to *level 1b* dataset. These FormoSat-3/COSMIC observation files are freely available on the web portal of the COSMIC Data Analysis and Archival Center (CDAAC) database, which are managed by University Corporation for Atmospheric Research (UCAR), Colorado, United States of America. Furthermore, CDAAC also provides '*ScnLv1*' scintillation datasets which contain off-line constructed S4 data calculated from 50 Hz that are recorded at 1 Hz. But from the several thousand *ScnLv1* profiles that are retrieved daily, only less than one-fourth profiles can be reconstructed for the F-region altitude of the ionosphere (Tsai et al., 2017). The derivation of *ionPhs* profiles is based on the assumption of spherical symmetry; however, this is not valid for EPBs (Jakowski et al., 2004; Arras, 2010). These datasets are retrieved at 1 Hz sampling rate with ~ 2 km of altitude resolution along the vertical range of ~ 60 km above the Earth's surface up to the orbital height of the LEOs (~ 800 km).

The raw Signal-to-Noise ratio (SNR) of the GPS L1 (1,575 MHz) *ionPhs* measurements are used to detect plasma bubbles. This is because the GPS L1 measurements show strong signal characteristics and are received with a relatively higher intensity

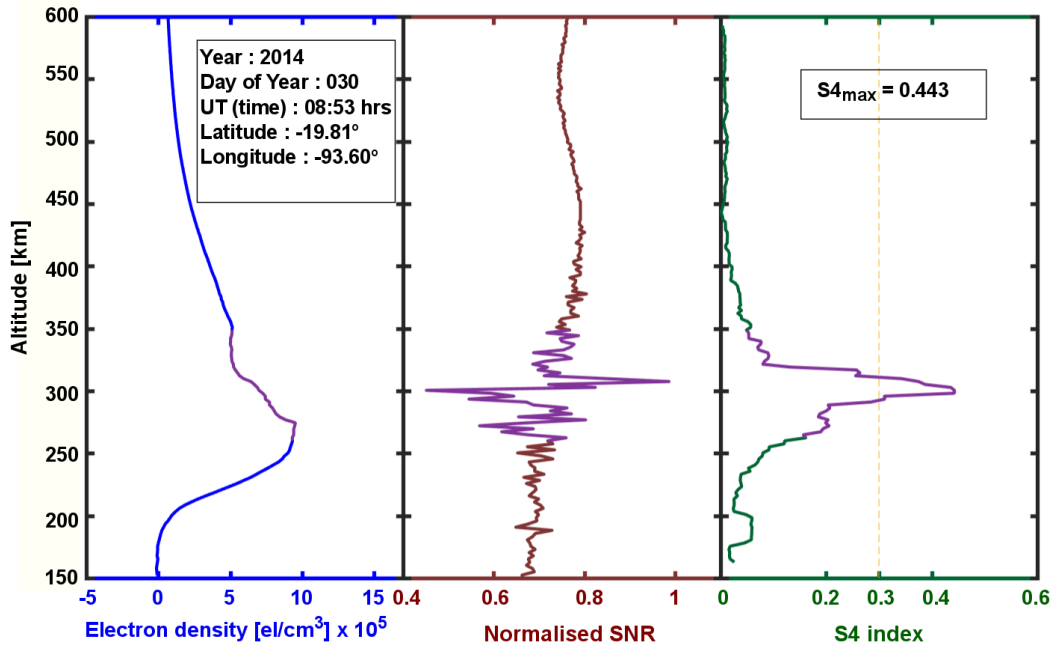


Figure 1. Electron density profile (ionPrf product) in conjunction with normalized SNR and derived S4 index (ionPhs product). The purple color line in the plot shows depletion in electron density and corresponding fluctuations of normalized SNR profile and high index values in the S4 plot.

when compared to the GPS L2 (1,227MHz) signals which are weaker and noisier. On the other aspect, SNR measurements are preferred over electron density profiles since they are directly available and no further treatment is required. Additionally, from literature, it is known that amplitude variation in the SNR profile has a direct influence on the vertical gradient of the electron density, which provides critical information on the underlying space weather conditions (Wickert et al., 2004; Arras et al., 2008). From Fig. 1, it is visible that the EPB's signature characterized by sharp depletion in the electron density corresponds to intense oscillations in the SNR profiles. Subsequently, these fluctuations produce a high value of amplitude scintillation index.

The scintillations caused by plasma bubbles are identified by deriving amplitude scintillation index, i.e., S4 index, from the SNR of the GPS L1 signals, since the variations in the SNR can be associated with the vertical changes in the electron density that mainly occur in line with the irregularities, e.g., EPBs (Hajj et al., 2002; Arras and Wickert, 2018). For subsequent analyses of the plasma bubbles, attributes of *ionPhs* datasets such as Signal-to-Noise SNR of GPS L1 signal, Universal time, altitude,

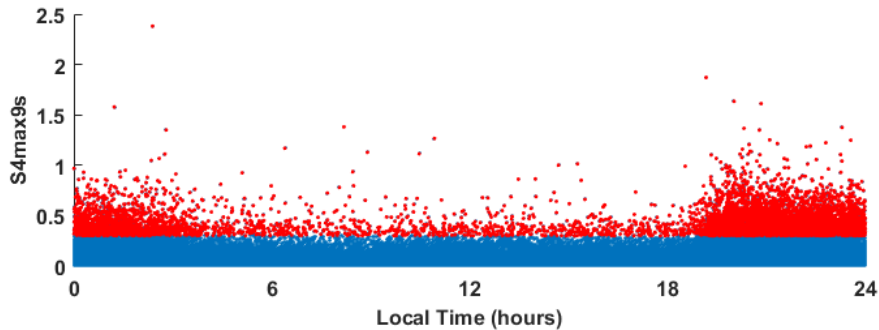


Figure 2. Plot of $S4_{max9sec}$ as a function of local time (LT) during 2014. The blue dots represent the scintillation index less than 0.3, whereas strong scintillations are represented by the red dots having S4 index larger than 0.3.

latitude, and longitude are extracted. Eventually, the S4 index is computed from the raw SNR measurements, as described by Syndergaard (2006) in Eq. 1.

$$S4_{max9sec} = \frac{\sqrt{\langle \langle (I - \langle \bar{I} \rangle)^2 \rangle \rangle}}{\langle \bar{I} \rangle} \quad (1)$$

where $S4_{max9sec}$ denotes the scintillation index calculated over nine seconds interval, I is the square of the SNR ratio of L1 GPS signal, and the bracket $\langle \rangle$ stands for average taken over nine seconds. Also, a low pass filter is applied to the time series of nine seconds interval to obtain a new average of the intensity $\langle \bar{I} \rangle$ for constructing a long-term detrended $S4_{max9sec}$ index (Syndergaard, 2006).

A simple representation of $S4_{max9sec}$ versus local time during the year 2014 is depicted in Fig. 2, showing scattered scintillation values caused due to varying electron density gradient. In addition, it also highlights low $S4_{max9sec}$ values during the day and high values during the night. The high values observed during the night are due to the plasma instabilities in the F-region after sunset. Altogether about 0.5 million profiles were retrieved in 2014, out of which only 6,130 (i.e., $\sim 1.2\%$) global profiles were classified as strong scintillation events originating from possible plasma instabilities.

For this study, a scintillation event was classified based on the $S4_{max9sec}$ index. Table 1 presents the different scintillation categories corresponding to different $S4_{max9sec}$ (hereafter referred to as S4) index. Within this study, S4 index greater than 0.3 is quantified to be a strong scintillation event influenced by possible plasma bubbles (Brahmanandam et al., 2012; Carter et al., 2013).

S4 values	scintillation category	occurrence (2014)
$S4 \geq 1.0$	high	0.02%
$0.3 < S4 < 1$	moderate	1.19 %
$S4 \leq 0.3$	low	98.79%

Table 1. Categorization of S4 index intensity.

3 Results

The FormoSat-3/COSMIC measurements between June 01, 2007 and December 31, 2017, were analyzed to understand the occurrence climatology of EPBs. This time-interval was selected to avoid the influences of orbit maneuvers in the data that were present until May 2007. Since the FormoSat-3/COSMIC satellites fly in non-sun-synchronous orbit with an inclination of 70°, they effectively perform global soundings. In order to centralize this study in the equatorial region, only the measurements within the geographical latitudinal extent of 50° N/S are considered. By determining this limit, polar scintillation events are excluded to focus explicitly on the equatorial ones. Also, the altitude range between 150 km and 600 km was specified to avoid the influences from the E-region and the noisier information from the GPS-RO profiles above 600 km.

3.1 Global distribution of EPBs

EPBs are field align irregularities, which occur along the geomagnetic equator and peaks during the time of year when the sunset terminator closely aligns with the magnetic field lines (Tsunoda, 1980, 1985). Fig. 3 reveals the global occurrence climatology of EPBs, covering a solar cycle, i.e., almost 11 years. The occurrence rate of EPBs is calculated as a ratio of a number of profiles that have S4 index greater than 0.3 to a number of all RO profiles within the specified grid integrated over local night time, i.e., between 18 LT and 06 LT. Although general occurrence of EPBs derived from the S4 index follows the course of the geomagnetic equator, the occurrence peak appears around and not directly at the geomagnetic equator. This result is expected because an equatorial anomaly reappears after the sunset, especially during high solar activity caused due to formation of an ionization trough at the magnetic equator (Aarons et al., 1981; Aarons, 1982). As a result, irregularities occur in the region of high plasma density, i.e., the crest of the equatorial anomaly. Previous results obtained using different techniques also showed strong scintillations in the crest latitudes compared with the dip equator (Basu et al., 1988, 2002). Furthermore, the 11-year climatology outlines the descending-ascending-descending phase that corresponds to the solar cycle. Low occurrence rates were observed with the onset of the descending phase, until the solar minimum year 2009, with a peak in the South American sector. Whereas, during the ascending phase of the solar cycle, the occurrence rates increased until the solar maximum year 2014, with the peak stretch along the Atlantic-African region with each passing year. For the descending phase, after the solar maximum year 2014, the occurrence rates again deteriorate with the peak migrating towards the South American region. Throughout this climatology, a finite proportion, if not the peak occurrence, of EPBs were present in the South American region. One of the reasons conferred by Huang et al. (2001) suggests the existence of a weaker magnetic field in that region, which accounts for the RTI's irregularities, caused due to vertical plasma drift because of the zonal electric field during the sunset. On the contrary, Burke et al. (2004a) argued on the weak occurrence rates of EPB during high solar activity, citing reason towards increased E-region conductivity because of particle precipitation in the South Atlantic anomaly. Besides, McClure et al. (1998) proposed possible seeding from gravity waves emerging from the troposphere in the Andes,

which has been investigated by Su et al. (2014). The authors confirmed a good correlation only in the South American region due to gravity waves that originated in the intertropical convergence zone. However, in the Atlantic-African region, there was a positive but still weak correlation. For such correlations, the authors referred that in addition to gravity waves, there subsisted other seed perturbations that produced plasma instabilities. From the annual EPB occurrence, almost negligible EPB occurrence was observed in the Atlantic-African, Asian, and Pacific regions during the low solar activity. Thus, some association of PRE to seed EPBs in this region could be possible since the magnitude of PRE is principally affected by solar activity (Li et al., 2007; Stolle et al., 2008; Kil et al., 2009; Abadi et al., 2015). Therefore, a significant number of EPBs occur during high solar activity, when the magnitude of PRE is at its peak magnitude, while weak EPB occurrence rate is observed during low solar activity when PRE amplitude is also at its minimum.

10 3.2 Local time dependency

From the previous studies, based on various probing techniques, it is evident that the EPBs are a night-time phenomenon that includes small scale irregularities inside the bubble, which lead to turbulent structures that cause scintillations (Woodman and La Hoz, 1976; Whalen, 1997; Sahai et al., 2000; Gentile et al., 2006; Yokoyama, 2017). A general local time occurrence of EPBs during 2014 is presented in Fig. 4, which is based on global soundings retrieved from the FormoSat-3/COSMIC satellites that fly in non-sun-synchronous orbit. The occurrence rate of EPBs, here, are based on the calculation similar to the global distribution occurrence, but for a different grid composition within the geographical latitudinal extent of 50° N/S. The rapid depletion of the E-region conductivity and the onset of PRE right after sunset cause the plasma bubble to develop, i.e., ~ 1900 LT. This characteristic is noticeable from the local time occurrence of EPBs shown in Fig. 4 and agrees with the study carried out by Stolle et al. (2006) using CHAMP in-situ measurements. In general, a substantial occurrence of EPBs is observed during high solar activity year, while sparse EPBs are generated during low solar activity year (Basu et al., 2002). In Fig. 5, a closer look at the occurrence of EPBs is presented based on solar maximum (2014) and solar minimum (2009) year. The occurrence rate is calculated as a ratio of the S4 values greater than 0.3 to the total number of S4 profiles for each hour starting from ~ 1900 LT within the 50° N/S of the geographical latitudinal grid. From the bar plot, it is understood that EPBs culminate approximately one hour earlier, i.e., ~ 2100 LT, during solar maximum compared with the culmination time, i.e., ~ 2200 LT during the solar minimum year; which is in agreement with the EPBs detected using CHAMP, and GRACE in-situ measurements by Xiong et al. (2010). However, local time characteristics manifested in this paper slightly differs from the local time distribution presented by Carter et al. (2013). In the author's paper, EPB's occurrence peaks about an hour later during the solar maximum year compared with the solar minimum year for all season-longitude analysis. The local time occurrence characteristics presented in this paper agree well with the argument conferred by Burke et al. (2009) who suggested, that the slow process of gravity-driven currents over weak PRE magnitude influences the EPB occurrence to peak at a relatively later local time for the solar minimum year.

3.2.1 Region-wise seasonal dependence of EPBs

Based on the argument put forth by Tsunoda (1985), the region-wise seasonal occurrence of plasma bubbles depends on the close alignment of the magnetic field line with the sunset terminator. In order to analyze the region-wise seasonal occurrence characteristics of EPBs, the longitude extent was discretized in four different sectors of 90° each, which includes America (110°W-20°W), Africa (20°W-70°E), Asia (70°E-160°E) and Pacific (160°E-110°W). These longitude sectors are compared further with different seasons based on a three-month interval around each solstice and equinox. The region-wise seasonal occurrence envisaged in Fig. 6 is based on geomagnetic latitude with respect to local time, which is similar to the seasonal-longitude occurrence presented for solar minimum conditions (2007-2011) by Carter et al. (2013). In comparison, in this study, around 2.2 million profiles were analyzed to present EPB's distribution between 2012-2016 that covered the crest of the solar cycle 24, i.e., 2014. In principle, EPBs were distributed on either side of the dip equator, with only one maximum on the positive side of the dip equator across all longitudes and seasons. On the contrary, two maxima on either side of the dip equator were observed by Carter et al. (2013) during solar minimum condition using FormoSat-3/COSMIC data, whereas only one peak at the dip equator was observed by Burke et al. (2004a) with Republic of China SATellite (ROCSAT)-1 observations in the period 2000-2002. The American region experienced a substantial occurrence of EPBs mostly across all seasons, except the June solstice (May-June-July), while, the African region encountered highest number of EPBs during the equinoxes and June solstice. Across all longitude sectors, Asia recorded the least occurrence rates of EPB for most of the seasons. In general, a maximum occurrence was observed during both the equinoxes in Africa and agree well with the results presented by Burke et al. (2004b) and Su et al. (2008), but it differs from the maximum equinoctial occurrence in America presented by Carter et al. (2013). The discrepancy observed could be due to measurements taken for different solar conditions. Wherein, the American region experienced a peak occurrence of EPBs during the solar minimum conditions (Carter et al., 2013). However, during solar maximum conditions, the peak occurrence featured over the African region.

Furthermore, in the equinox and solstice seasons, asymmetries were observed, where, in the American region, almost negligible EPBs were detected during June solstice compared to the rest of the season. According to Tsunoda (1985), this was due to a vaster sunset time lag in the June solstice, which constraints the formation of EPBs. On the contrary, Africa, Asia, and the Pacific region recorded more EPBs during the June solstice compared to December solstice (November-December-January). But for this scenario, the sunset time lag approach could not justify the occurrence; however, it was rationalized by Nishioka et al. (2008) citing the reason for the integrated flux tube conductivities in the F-region and its seasonal occurrence, which proved to be favorable for the solstice asymmetry in Africa, Asia and Pacific sectors. For the equinox asymmetry, America, Africa, and Asia encountered a significant occurrence in March equinox (February-March-April) compared to September equinox (August-September-October), except for the Pacific region, which agrees well with Burke et al. (2004b). In general, the Eastern hemisphere, e.g., Asian and parts of Pacific sectors, recorded few EPBs, because of the dominant magnetic field at the equator. Whereas comparably more EPBs were observed in the region of a relatively weak equatorial magnetic field, i.e., at the American and African longitudes (Burke et al., 2004a, b).

3.3 Altitude variations and solar cycle dependency

The FormoSat-3/COSMIC measurements provide height dependent information, which is valuable as compared to the measurements obtained from the other contemporary techniques for investigating plasma bubbles on a global scale. Based on the generalized notion, EPBs are generated in the bottom side of the F-region as a consequence of the RTI, and move upwards through the electrodynamic process (Whalen, 1997; Kelley, 2009; Woodman, 2009). Fig. 7 shows the altitude distribution of EPBs on an annual basis and manifests that the occurrence of plasma bubbles is dependent on different conditions of the solar activity. The study also revealed that the periodic variation in the solar cycle plays an indirect role in influencing the vertical occurrence range of the plasma bubbles. Thus, during high solar activity in 2014, EPBs were spread over a sizeable range, while during low solar activity in 2009, a smaller altitude range was covered. Besides, the occurrence peak of EPBs during 2014 was found at ~ 420 km, while during 2009, it occurred at ~ 240 km. The altitudinal uplift of EPBs was mainly due to the magnitude of PRE, which is dependent on the solar activity (Fejer et al., 1999; Stolle et al., 2008; Abadi et al., 2015; Liu et al., 2016). In addition, EPBs primarily generated at the geomagnetic equator elongates in latitude due to the dominance of PRE (Abdu et al., 2003; Anderson et al., 2004; Liu et al., 2016). This is obvious in the altitude distribution of the plasma bubbles, wherein during low solar activity, EPBs were almost contained at the geomagnetic equator, whereas during high solar activity, EPBs were spread out on either side of dip equator (Liu et al., 2016). The growth rate and the altitudinal variation of EPBs were an outcome of degenerated conductivity in the E-region along with an enhanced zonal electric field at the sunset (Farley et al., 1970; Stolle et al., 2008; Su et al., 2014). Ideally, PRE lifts the plasma in the F-layer by means of $E \times B$ drift to an altitude where the neutral-ion collision frequency is low, which is inversely proportional to the growth rate of plasma bubble (Fejer et al., 1999; Abadi et al., 2015). In the process, EPBs continue to proceed higher in altitude until the eastward electric field on the top of the bubble becomes zero, which eventually causes them to decay (Krall et al., 2010).

From the occurrence climatology presented in this paper, it is apparent that the influence of PRE causes EPBs to materialize in accordance with the solar activity. Thus, more EPBs are detected during maximum solar activity compared to minimum (Basu et al., 2002). A brief analogy in support of the argument is presented in Fig. 8, which shows the sunspot cycle and relative occurrence numbers of EPBs with semi-annual structures across different years. Fig. 8a depicts the current sunspot cycle represented by the monthly sunspot numbers (blue solid line) and a smoothed curve (orange solid line), whereas Fig. 8b shows an annual occurrence trend of plasma bubbles characterized by monthly (red solid line) and smoothed monthly values (green solid line) from mid-of 2007 to 2017. On the global spectrum, the EPBs occur in line with solar activity; however, it is not a typical scenario on a regional basis. Nishioka et al. (2008) showed that the dependence of solar activity in specific longitude sectors does not influence the occurrence rate of EPBs. For example, EPBs in the African and Asian sectors appear in congruence with the solar cycle; however, the same is not observed in the American sector, as revealed in Fig. 3. This most likely could be due to the presence of gravity wave perturbations, which seed EPBs despite weak PRE magnitudes during solar minimum conditions in the South American region (Burke et al., 2004a; Stolle et al., 2008; Su et al., 2014).

4 Conclusions

This paper provides a brief occurrence climatology of EPBs covering around 10.5 years of GPS-RO measurements from FormoSat-3/COSMIC. The scintillations induced in the signals caused by the EPBs were detected using an amplitude scintillation index known as the S4 index. By classifying the S4 data, subsequent analyses were carried out by exploiting the strong scintillation events. In this study, EPBs occur at the crest anomaly latitudes along the geomagnetic equator and have peak occurrence oscillating between America and Africa for solar minimum and solar maximum years, respectively. Further, the annual global distribution of EPBs showed congruency with solar activity, especially in Africa. Thus implying on the influence of vertical drift from PRE, which also depends on the solar activity. However, there is no apparent dependence on the solar cycle in the American sector. In hindsight, gravity-driven currents are known to have a good correlation on the occurrence of plasma bubbles solely in the American area. Therefore, it is presupposed that EPBs are triggered with different seed perturbations for different regions. From the local time occurrence, EPBs are apprehended to develop post-sunset around 1900LT, right after the enhancement in the zonal eastward electric field at the sunset. Moreover, EPBs generated during solar maximum year peaks at an hour earlier compared to EPBs during the solar minimum year. This implicates a dependency on PRE, which has a larger magnitude of vertical plasma drift during high solar activity compared with low solar activity. On the other hand, region-wise seasonal occurrence shows maximum EPBs in Africa during March equinox. Almost, in all longitude sectors, more EPBs were detected in the March equinox compared to September equinox. Whereas for solstice months, it agrees with the argument from Tsunoda (1985), in which more EPBs were encountered at longitudes with positive (negative) declination during June (December) solstice and have good agreement with Burke et al. (2004b), Su et al. (2008), and Carter et al. (2013). These EPBs, which are provoked by PRE, show a strong dependence on the periodic variation in solar activity with a greater altitude extent during high solar activity. In principle, throughout the global analyses, a comparison with the sunspot cycle with the annual EPB occurrence reveals a strong dependence on solar activity. Recently, Xiong et al. (2010) articulated based on a comparative study of EPBs using CHAMP and GRACE in-situ measurements, that more EPBs get detected at an altitude below 300km, compared to the above. However, since the in-situ measurements encounter EPBs at an orbit altitude usually above 400km, only some signatures of EPBs, e.g., only small dips in the plasma density, are detected. Thus, the GPS-RO technique seems promising in understanding the global EPBs and can also perform as a complementary technique in analyzing such ionospheric irregularities because of unique measurements available as a result of vertical soundings on a global scale.

Code availability. TEXT

Data availability. Ionospheric radio occultation data is based on FormoSat-3/COSMIC satellite mission available from CDAAC (<http://www.cosmic.ucar.edu>). The dataset for the solar sunspot number is obtained from Sunspot Index and Long term Solar Observations website (<http://www.sidc.be/silso/datafiles>)

Appendix A

A1

Author contributions. A. Kepkar performed the analysis and drafted the manuscript with the help of C. Arras and J. Wickert, H. Schuh, M. Alizadeh and L.C. Tsai, who also provided with constructive scientific advices.

- 5 *Competing interests.* The authors declare that they have no conflict of interest.

Disclaimer. TEXT

Acknowledgements. The authors recognize the efforts of FormoSat-3/COSMIC team and are grateful for providing the measurements. C. Arras acknowledges the support from Deutsche Forschungsgemeinschaft (DFG) Priority Program DynamicEarth SPP1788. A. Kepkar acknowledges support from DFG under SCHU 1103/15-1.

References

- Aarons, J.: Global morphology of ionospheric scintillations, *Proceedings of the IEEE*, 70, 360–378, 1982.
- Aarons, J., Whitney, H. E., MacKenzie, E., and Basu, S.: Microwave equatorial scintillation intensity during solar maximum, *Radio Science*, 16, 939–945, 1981.
- 5 Abadi, P., Otsuka, Y., and Tsugawa, T.: Effects of pre-reversal enhancement of $E \times B$ drift on the latitudinal extension of plasma bubble in Southeast Asia, *Earth, Planets and Space*, pp. 67–74, <https://doi.org/10.1186/s40623-015-0246-7>, 2015.
- Abdu, M., MacDougall, J., Batista, I., Sobral, J., and Jayachandran, P.: Equatorial evening prereversal electric field enhancement and sporadic E layer disruption: A manifestation of E and F region coupling, *Journal of Geophysical Research: Space Physics*, 108, 1254–1267, <https://doi.org/10.1029/2002JA009285>, 2003.
- 10 Abdu, M., Kherani, E. A., Batista, I., de Paula, E., Fritts, D., and Sobral, J.: Gravity wave initiation of equatorial spread F/plasma bubble irregularities based on observational data from the SpreadFEx campaign, *Annales Geophysicae*, 27, 2607–2622, <https://doi.org/10.5194/angeo-27-2607-2009>, 2009.
- Anderson, D. N., Reinisch, B., Valladare, C., Chau, J., and Veliz, O.: Forecasting the occurrence of ionospheric scintillation activity in the equatorial ionosphere on a day-to-day basis, *Journal of Atmospheric and Solar-Terrestrial Physics*, 66, 1567–1572, <https://doi.org/10.1016/j.jastp.2004.07.010>, 2004.
- 15 Anthes, R. A., Bernhardt, P. A., Chen, Y., Cucurull, L., Dymond, K. F., Ector, D., Healy, S. B., Ho, S. P., Hunt, D. C., Kuo, Y. H., Liu, H., Ko, M., McCormick, C., Meehan, T., Randel, W. J., Rocken, C., Schreiner, W. S., Sokolovskiy, S. V., Syndergaard, S., Thompson, D. C., Trenberth, K. E., Wee, T. K., Yen, N. L., and Zeng, Z.: The COSMIC/FORMOSAT-3 mission: Early results, *Bulletin of the American Meteorological Society*, 89, 313–333, <https://doi.org/10.1175/BAMS-89-3-313>, 2008.
- 20 Arras, C.: A Global Survey of Sporadic E Layers based on GPS Radio Occultations by CHAMP, GRACE and FORMOSAT-3/COSMIC, Scientific Technical Report (STR) 10/09, German Research Centre for Geosciences GFZ, Potsdam, <https://doi.org/10.2312/GFZ.b103-10097>, 2010.
- Arras, C. and Wickert, J.: Estimation of ionospheric sporadic E intensities from GPS radio occultation measurements, *Journal of Atmospheric and Solar-Terrestrial Physics*, 171, 60–63, <https://doi.org/10.1016/j.jastp.2017.08.006>, 2018.
- 25 Arras, C., Wickert, J., Beyerle, G., Heise, S., Schmidt, T., and Jacobi, C.: A global climatology of ionospheric irregularities derived from GPS radio occultation, *Geophysical Research Letters*, 35, L14 809, <https://doi.org/10.1029/2008GL034158>, 2008.
- Arras, C., Jacobi, C., Wickert, J., Heise, S., and Schmidt, T.: Sporadic E signatures revealed from multi-satellite radio occultation measurements, *Advances in Radio Science*, 8, 225–230, <https://doi.org/10.5194/ars-8-225-2010>, 2010.
- Basu, S., MacKenzie, E., and Basu, S.: Ionospheric constraints on VHF/UHF communications links during solar maximum and minimum periods, *Radio Science*, 23, 363–378, <https://doi.org/10.1029/RS023i003p00363>, 1988.
- 30 Basu, S., Groves, K., Quinn, J., and Doherty, P.: A comparison of TEC fluctuations and scintillations at Ascension Island, *Journal of Atmospheric and Solar-Terrestrial Physics*, 61, 1219–1226, [https://doi.org/10.1016/S1364-6826\(99\)00052-8](https://doi.org/10.1016/S1364-6826(99)00052-8), 1999.
- Basu, S., Groves, K., Basu, S., and Sultan, P.: Specification and forecasting of scintillations in communication/navigation links: current status and future plans, *Journal of atmospheric and solar-terrestrial physics*, 64, 1745–1754, [https://doi.org/10.1016/S1364-6826\(02\)00124-4](https://doi.org/10.1016/S1364-6826(02)00124-4),
35 2002.
- Booker, H. and Wells, H.: Scattering of radio waves by the F-region of the ionosphere, *Journal of Geophysical Research*, 43, 249–256, <https://doi.org/10.1029/TE043i00-3p00249>, 1938.

- Brahmanandam, P., Uma, G., Liu, J., Chu, Y., Latha Devi, N., and Kakinami, Y.: Global S4 index variations observed using FORMOSAT-3/COSMIC GPS RO technique during a solar minimum year, *Journal of Geophysical Research: Space Physics*, 117, A09322, <https://doi.org/10.1029/2012JA017966>, 2012.
- Burke, W., Gentile, L., Huang, C., Valladares, C., and Su, S.: Longitudinal variability of equatorial plasma bubbles observed by DMSP and ROCSAT-1, *Journal of Geophysical Research: Space Physics*, 109, <https://doi.org/10.1029/2004JA010583>, 2004a.
- Burke, W., Huang, C., Gentile, L., and Bauer, L.: Seasonal-longitudinal variability of equatorial plasma bubbles, *Annales Geophysicae*, 22, 3089–3098, <https://doi.org/10.5194/angeo-22-3089-2004>, 2004b.
- Burke, W., de La Beaujardière, O., Gentile, L., Hunton, D., Pfaff, R., Roddy, P., Su, Y.-J., and Wilson, G.: C/NOFS observations of plasma density and electric field irregularities at post-midnight local times, *Geophysical Research Letters*, 36, L00C09, <https://doi.org/10.1029/2009GL038879>, 2009.
- Carrano, C. S. and Groves, K. M.: TEC gradients and fluctuations at low latitudes measured with high data rate GPS receivers, in: *Proceedings of the 63rd annual meeting of the Institute of Navigation*, Cambridge, MA, pp. 156–163, 2007.
- Carter, B. A., Zhang, K., Norman, R., Kumar, V. V., and Kumar, S.: On the occurrence of equatorial F-region irregularities during solar minimum using radio occultation measurements, *Journal of Geophysical Research: Space Physics*, 118, 892–904, <https://doi.org/10.1002/jgra.50089>, 2013.
- Chu, C.-H., Fong, C.-J., Xia-Serafino, W., Shiau, A., Taylor, M., Chang, M.-S., Chen, W.-J., Liu, T.-Y., Liu, N.-C., Martins, B., Garcia, J. R., and Da Silva Curiel, A.: An Era of Constellation Observation-FORMOSAT-3/COSMIC and FORMOSAT-7/COSMIC-2, *Journal of Aeronautics, Astronautics and Aviation*, 50, 335–346, 2018.
- Dao, E., Kelley, M., Roddy, P., Retterer, J., Ballenthin, J., de La Beaujardiere, O., and Su, Y.-J.: Longitudinal and seasonal dependence of nighttime equatorial plasma density irregularities during solar minimum detected on the C/NOFS satellite, *Geophysical Research Letters*, 38, L10 104, <https://doi.org/10.1029/2011GL047046>, 2011.
- Farley, D., Balsey, B., Woodman, R., and McClure, J.: Equatorial spread F: Implications of VHF radar observations, *Journal of Geophysical Research*, 75, 7199–7216, <https://doi.org/10.1029/JA075i034p07199>, 1970.
- Fejer, B. G. and Kelley, M.: Ionospheric irregularities, *Reviews of Geophysics*, 18, 401–454, <https://doi.org/10.1029/RG018i002p00401>, 1980.
- Fejer, B. G., Scherliess, L., and De Paula, E.: Effects of the vertical plasma drift velocity on the generation and evolution of equatorial spread F, *Journal of Geophysical Research: Space Physics*, 104, 19 859–19 869, <https://doi.org/10.1029/1999JA900271>, 1999.
- Gentile, L., Burke, W., and Rich, F.: A global climatology for equatorial plasma bubbles in the topside ionosphere, 24, 163–172, <https://hal.archives-ouvertes.fr/hal-00317925>, 2006.
- Hajj, G. A., Kursinski, E., Romans, L., Bertiger, W., and Leroy, S.: A technical description of atmospheric sounding by GPS occultation, *Journal of Atmospheric and Solar-Terrestrial Physics*, 64, 451–469, 2002.
- Hanson, W. and Sanatani, S.: Large Ni gradients below the equatorial F peak, *Journal of Geophysical Research*, 78, 1167–1173, <https://doi.org/10.1029/JA078i007p01167>, 1973.
- Huang, C., Burke, W., Machuzak, J., Gentile, L., and Sultan, P.: DMSP observations of equatorial plasma bubbles in the topside ionosphere near solar maximum, *Journal of Geophysical Research: Space Physics*, 106, 8131–8142, <https://doi.org/10.1029/2000JA000319>, 2001.
- Huang, C.-S., de La Beaujardiere, O., Roddy, P., Hunton, D., Pfaff, R., Valladares, C., and Ballenthin, J.: Evolution of equatorial ionospheric plasma bubbles and formation of broad plasma depletions measured by the C/NOFS satellite during deep solar minimum, *Journal of Geophysical Research: Space Physics*, 116, <https://doi.org/10.1029/2010JA015982>, 2011.

- Jakowski, N., Leitinger, R., and Angling, M.: Radio occultation techniques for probing the ionosphere, *Annales of Geophysics*, 47, 1049–1066, <https://doi.org/10.4401/ag-3285>, 2004.
- Kelley, M.: *The Earth's Ionosphere: Plasma Physics and Electrodynamics*, International geophysics series, Academic Press, 2009.
- Kil, H., Paxton, L. J., and Oh, S.-J.: Global bubble distribution seen from ROCSAT-1 and its association with the evening prereversal enhancement, *Journal of Geophysical Research: Space Physics*, 114, <https://doi.org/10.1029/2008JA013672>, 2009.
- 5 Krall, J., Huba, J., Ossakow, S., and Joyce, G.: Why do equatorial ionospheric bubbles stop rising?, *Geophysical Research Letters*, 37, L09 105, <https://doi.org/10.1029/2010GL043128>, 2010.
- Kudeki, E. and Bhattacharyya, S.: Postsunset vortex in equatorial F-region plasma drifts and implications for bottomside spread-F, *Journal of Geophysical Research: Space Physics*, 104, 28 163–28 170, <https://doi.org/10.1029/1998JA900111>, 1999.
- 10 Kudeki, E., Akgiray, A., Milla, M., Chau, J. L., and Hysell, D. L.: Equatorial spread-F initiation: Post-sunset vortex, thermospheric winds, gravity waves, *Journal of Atmospheric and Solar-Terrestrial Physics*, 69, 2416–2427, <https://doi.org/10.1016/j.jastp.2007.04.012>, 2007.
- Kursinski, E. R., Hajj, G. A., Schofield, J. T., Linfield, R. P., and Hardy, K. R.: Observing Earth's atmosphere with radio occultation measurements using the Global Positioning System, *Journal of Geophysical Research: Atmospheres*, 102, 23 429–23 465, <https://doi.org/10.1029/97JD01569>, 1997.
- 15 Kursinski, E. R., Hajj, G. A., Leroy, S. S., and Herman, B.: The GPS Radio Occultation Technique, *Terrestrial Atmospheric and Oceanic Sciences*, 11, 53–114, <http://hdl.handle.net/2014/14027>, 1999.
- Lei, J., Syndergaard, S., Burns, A. G., Solomon, S. C., Wang, W., Zeng, Z., Roble, R. G., Wu, Q., Kuo, Y.-H., Holt, J. M., Zhang, S.-R., Hysell, D. L., Rodrigues, F. S., and Lin, C. H.: Comparison of COSMIC ionospheric measurements with ground-based observations and model predictions: Preliminary results, *Journal of Geophysical Research: Space Physics*, 112, A07 308, <https://doi.org/10.1029/2006JA012240>,
- 20 2007.
- Li, G., Ning, B., Liu, L., Ren, Z., Lei, J., and Su, S.-Y.: The correlation of longitudinal/seasonal variations of evening equatorial pre-reversal drift and of plasma bubbles, *Annales Geophysicae*, 25, 2571–2578, <https://doi.org/10.5194/angeo-25-2571-2007>, 2007.
- Liu, J., Chen, S., Yeh, W., Tsai, H., and Rajesh, P.: Worst-case GPS scintillations on the ground estimated from radio occultation observations of FORMOSAT-3/COSMIC during 2007–2014, *Surveys in Geophysics*, 37, 791–809, <https://doi.org/10.1007/s10712-015-9355-x>, 2016.
- 25 Martinis, C. and Mendillo, M.: Equatorial spread F-related airglow depletions at Arecibo and conjugate observations, *Journal of Geophysical Research: Space Physics*, 112, A10 310, <https://doi.org/10.1029/2007JA012403>, 2007.
- McClure, J., Hanson, W., and Hoffman, J.: Plasma bubbles and irregularities in the equatorial ionosphere, *Journal of Geophysical Research*, 82, 2650–2656, <https://doi.org/10.1029/JA082i019p02650>, 1977.
- McClure, J., Singh, S., Bamgboye, D., Johnson, F., and Kil, H.: Occurrence of equatorial F region irregularities: Evidence for tropospheric seeding, *Journal of Geophysical Research: Space Physics*, 103, 29 119–29 135, <https://doi.org/10.1029/98JA02749>, 1998.
- 30 Nishioka, M., Saito, A., and Tsugawa, T.: Occurrence characteristics of plasma bubble derived from global ground-based GPS receiver networks, *Journal of Geophysical Research: Space Physics*, 113, A05 301, <https://doi.org/10.1029/2007JA012605>, 2008.
- Park, J., Min, K. W., Kim, V. P., Kil, H., Lee, J.-J., Kim, H.-J., Lee, E., and Lee, D. Y.: Global distribution of equatorial plasma bubbles in the premidnight sector during solar maximum as observed by KOMPSAT-1 and Defense Meteorological Satellite Program F15, *Journal of Geophysical Research: Space Physics*, 110, A07 308, <https://doi.org/10.1029/2004JA010817>, 2005.
- 35 Retterer, J. and Roddy, P.: Faith in a seed: on the origins of equatorial plasma bubbles, *Annales Geophysicae*, 32, 485–498, <https://doi.org/10.5194/angeo-32-485-2014>, 2014.

- Rocken, C., Anthes, R., Exner, M., Hunt, D., Sokolovskiy, S., Ware, R., Gorbunov, M., Schreiner, W., Feng, D., Herman, B., Kuo, Y.-H., and Zou, X.: Analysis and validation of GPS/MET data in the neutral atmosphere, *Journal of Geophysical Research: Atmospheres*, 102, 29 849–29 866, <https://doi.org/10.1029/97JD02400>, 1997.
- Röttger, J.: Equatorial spread-F by electric fields and atmospheric gravity waves generated by thunderstorms, *Journal of Atmospheric and Terrestrial Physics*, 43, 453–462, [https://doi.org/10.1016/0021-9169\(81\)90108-2](https://doi.org/10.1016/0021-9169(81)90108-2), 1981.
- Sahai, Y., Aarons, J., Mendillo, M., Baumgardner, J., Bittencourt, J., and Takahashi, H.: OI 630 nm imaging observations of equatorial plasma depletions at 16 S dip latitude, *Journal of Atmospheric and Terrestrial Physics*, 56, 1461–1475, [https://doi.org/10.1016/0021-9169\(94\)90113-9](https://doi.org/10.1016/0021-9169(94)90113-9), 1994.
- Sahai, Y., Fagundes, P., and Bittencourt, J.: Transequatorial F-region ionospheric plasma bubbles: solar cycle effects, *Journal of Atmospheric and Solar-Terrestrial Physics*, 62, 1377–1383, [https://doi.org/10.1016/S1364-6826\(00\)00179-6](https://doi.org/10.1016/S1364-6826(00)00179-6), 2000.
- Singh, S., Johnson, F., and Power, R.: Gravity wave seeding of equatorial plasma bubbles, *Journal of Geophysical Research: Space Physics*, 102, 7399–7410, <https://doi.org/10.1029/96JA03998>, 1997.
- Stolle, C., Lühr, H., Rother, M., and Balasis, G.: Magnetic signatures of equatorial spread F as observed by the CHAMP satellite, *Journal of Geophysical Research: Space Physics*, 111, A02 304, <https://doi.org/10.1029/2005JA011184>, 2006.
- Stolle, C., Lühr, H., and Fejer, B.: Relation between the occurrence rate of ESF and the equatorial vertical plasma drift velocity at sunset derived from global observations, *Annales Geophysicae*, 26, 3979–3988, <https://doi.org/10.5194/angeo-26-3979-2008>, 2008.
- Su, S.-Y., Chao, C., and Liu, C.: On monthly/seasonal/longitudinal variations of equatorial irregularity occurrences and their relationship with the postsunset vertical drift velocities, *Journal of Geophysical Research: Space Physics*, 113, A05 307, <https://doi.org/10.1029/2007JA012809>, 2008.
- Su, S.-Y., Wu, C. L., and Liu, C. H.: Correlation between the global occurrences of ionospheric irregularities and deep atmospheric convective clouds in the intertropical convergence zone (ITCZ), *Earth, Planets and Space*, 66, 134 1 – 134 8, <https://doi.org/10.1186/1880-5981-66-134>, 2014.
- Sultan, P.: Linear theory and modeling of the Rayleigh-Taylor instability leading to the occurrence of equatorial spread F, *Journal of Geophysical Research: Space Physics*, 101, 26 875–26 891, <https://doi.org/10.1029/96JA00682>, 1996.
- Syndergaard, S.: COSMIC S4 Data, COSMIC Data Analysis and Archival Center at UCAR, https://tacc.cwb.gov.tw/cdaac/doc/documents/s4_description.pdf, 2006.
- Taori, A., Patra, A., and Joshi, L.: Gravity wave seeding of equatorial plasma bubbles: An investigation with simultaneous F region, E region, and middle atmospheric measurements, *Journal of Geophysical Research: Space Physics*, 116, A05 310, <https://doi.org/10.1029/2010JA016229>, 2011.
- Tsai, L.-C., Su, S.-Y., and Liu, C.-H.: Global morphology of ionospheric F-layer scintillations using FS3/COSMIC GPS radio occultation data, *GPS Solutions*, 21, 1037–1048, <https://doi.org/10.1007/s10291-016-0591-4>, 2017.
- Tsunoda, R. T.: Magnetic-field-aligned characteristics of plasma bubbles in the nighttime equatorial ionosphere, *Journal of Atmospheric and Terrestrial Physics*, 42, 743–752, [https://doi.org/10.1016/0021-9169\(80\)90057-4](https://doi.org/10.1016/0021-9169(80)90057-4), 1980.
- Tsunoda, R. T.: Control of the seasonal and longitudinal occurrence of equatorial scintillations by the longitudinal gradient in integrated E region Pedersen conductivity, *Journal of Geophysical Research: Space Physics*, 90, 447–456, <https://doi.org/10.1029/JA090iA01p00447>, 1985.
- Tsunoda, R. T.: Seeding of equatorial plasma bubbles with electric fields from an Es-layer instability, *Journal of Geophysical Research: Space Physics*, 112, A06 304, <https://doi.org/10.1029/2006JA012103>, 2007.

- Tsunoda, R. T.: On seeding equatorial spread F: Circular gravity waves, *Geophysical Research Letters*, 37, L10 104, <https://doi.org/10.1029/2010GL043422>, 2010.
- Tsunoda, R. T.: Upwelling: a unit of disturbance in equatorial spread F, *Progress in Earth and Planetary Science*, 2, 9, <https://doi.org/10.1186/s40645-015-0038-5>, 2015.
- 5 Whalen, J.: Equatorial bubbles observed at the north and south anomaly crests: Dependence on season, local time, and dip latitude, *Radio Science*, 32, 1559–1566, <https://doi.org/10.1029/97RS00285>, 1997.
- Wickert, J., Reigber, C., Beyerle, G., König, R., Marquardt, C., Schmidt, T., Grunwaldt, L., Galas, R., Meehan, T. K., Melbourne, W. G., and Hocke, K.: Atmosphere sounding by GPS radio occultation: First results from CHAMP, *Geophysical Research Letters*, 28, 3263–3266, <https://doi.org/10.1029/2001GL013117>, 2001.
- 10 Wickert, J., Beyerle, G., Hajj, G. A., Schwieger, V., and Reigber, C.: GPS radio occultation with CHAMP: Atmospheric profiling utilizing the space-based single difference technique, *Geophysical Research Letters*, 29, 1–4, <https://doi.org/10.1029/2001GL013982>, 2002.
- Wickert, J., Schmidt, T., Beyerle, G., König, R., Reigber, C., and Jakowski, N.: The radio occultation experiment aboard CHAMP: Operational data analysis and validation of vertical atmospheric profiles, *Journal of the Meteorological Society of Japan. Ser. II*, 82, 381–395, <https://doi.org/10.2151/jmsj.2004.381>, 2004.
- 15 Wickert, J., Michalak, G., Schmidt, T., Beyerle, G., Cheng, C.-Z., Healy, S. B., Heise, S., Huang, C.-Y., Jakowski, N., Köhler, W., Mayer, C., Offiler, D., Ozawa, E., Pavelyev, A., Rothacher, M., Tapley, B., and Arras, C.: GPS Radio Occultation: Results from CHAMP, GRACE and FORMOSAT-3/COSMIC, *Terrestrial, Atmospheric & Oceanic Sciences*, 20(1), 35–50, [https://doi.org/10.3319/TAO.2007.12.26.01\(F3C\)](https://doi.org/10.3319/TAO.2007.12.26.01(F3C)), 2009.
- Woodman, R. F.: Spread F – an old equatorial aeronomy problem finally resolved?, *Annales Geophysicae*, 27, 1915–1934, <https://doi.org/10.5194/angeo-27-1915-2009>, 2009.
- 20 Woodman, R. F. and La Hoz, C.: Radar observations of F region equatorial irregularities, *Journal of Geophysical Research*, 81, 5447–5466, <https://doi.org/10.1029/JA081i031p05447>, 1976.
- Xiong, C., Park, J., Lühr, H., Stolle, C., and Ma, S.: Comparing plasma bubble occurrence rates at CHAMP and GRACE altitudes during high and low solar activity, *Annales Geophysicae*, 28, 1647, 2010.
- 25 Yeh, K. C. and Liu, C.-H.: Radio wave scintillations in the ionosphere, *Proceedings of the IEEE*, 70, 324–360, <https://doi.org/10.1109/PROC.1982.12313>, 1982.
- Yokoyama, T.: A review on the numerical simulation of equatorial plasma bubbles toward scintillation evaluation and forecasting, *Progress in Earth and Planetary Science*, 4, 37, <https://doi.org/10.1186/s40645-017-0153-6>, 2017.

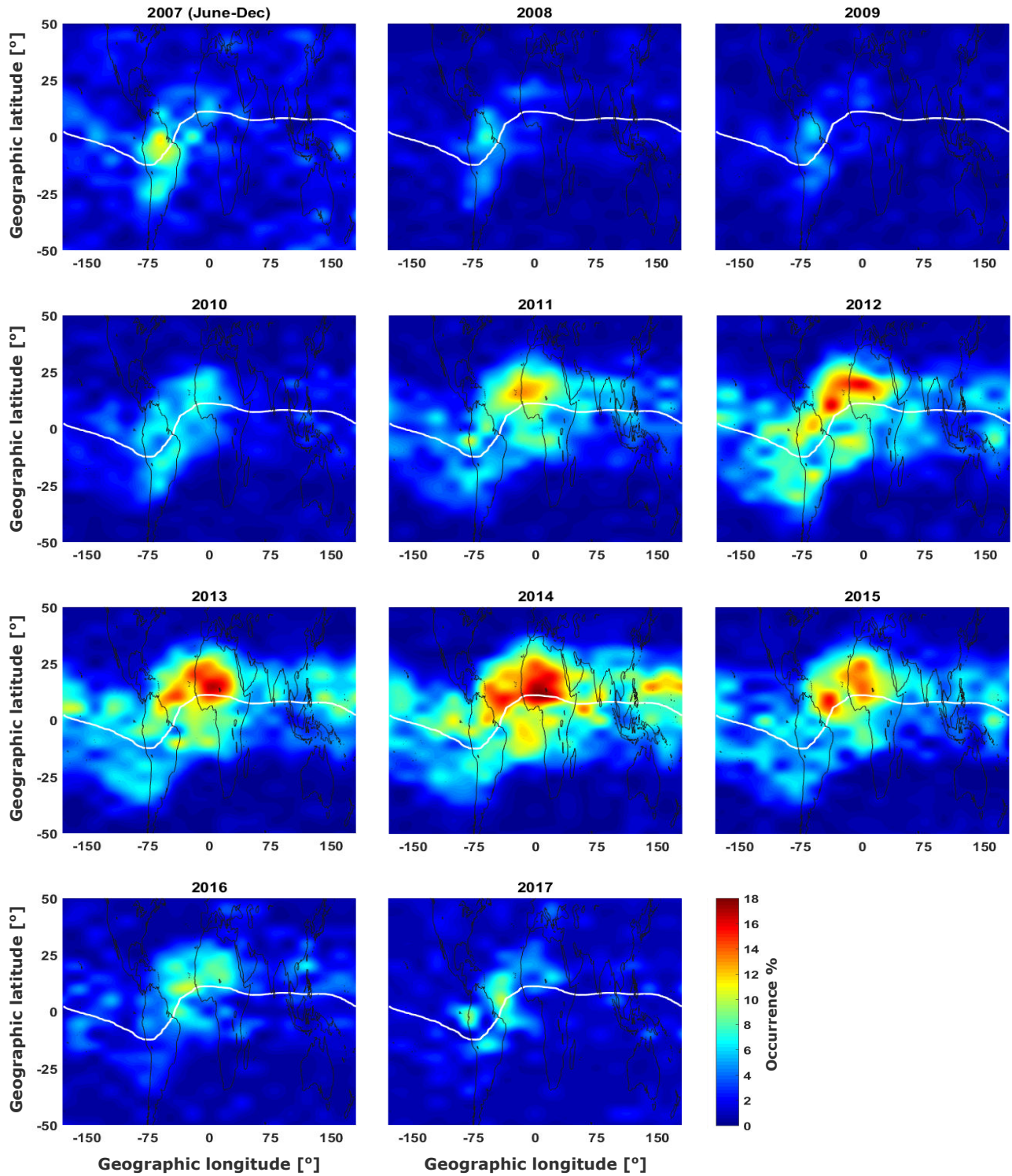


Figure 3. Geographical distribution of EPBs from mid-of 2007 to 2017 in 5° latitudinal by 20° longitudinal grid. The white solid line depicts the geomagnetic equator.

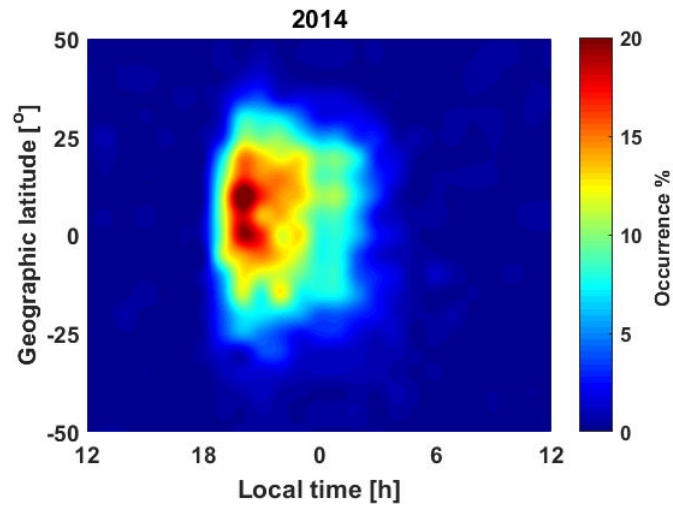


Figure 4. Latitudinal and local time dependence of equatorial plasma bubble occurrence in 1 LT by 5° latitudinal grid during 2014.

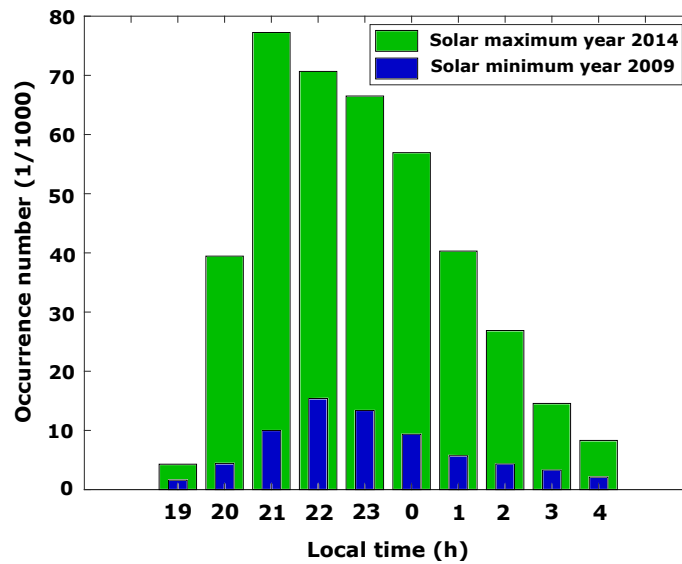


Figure 5. Occurrence of plasma bubbles based on local time during the solar minimum year (2009) and solar maximum year (2014) respectively.

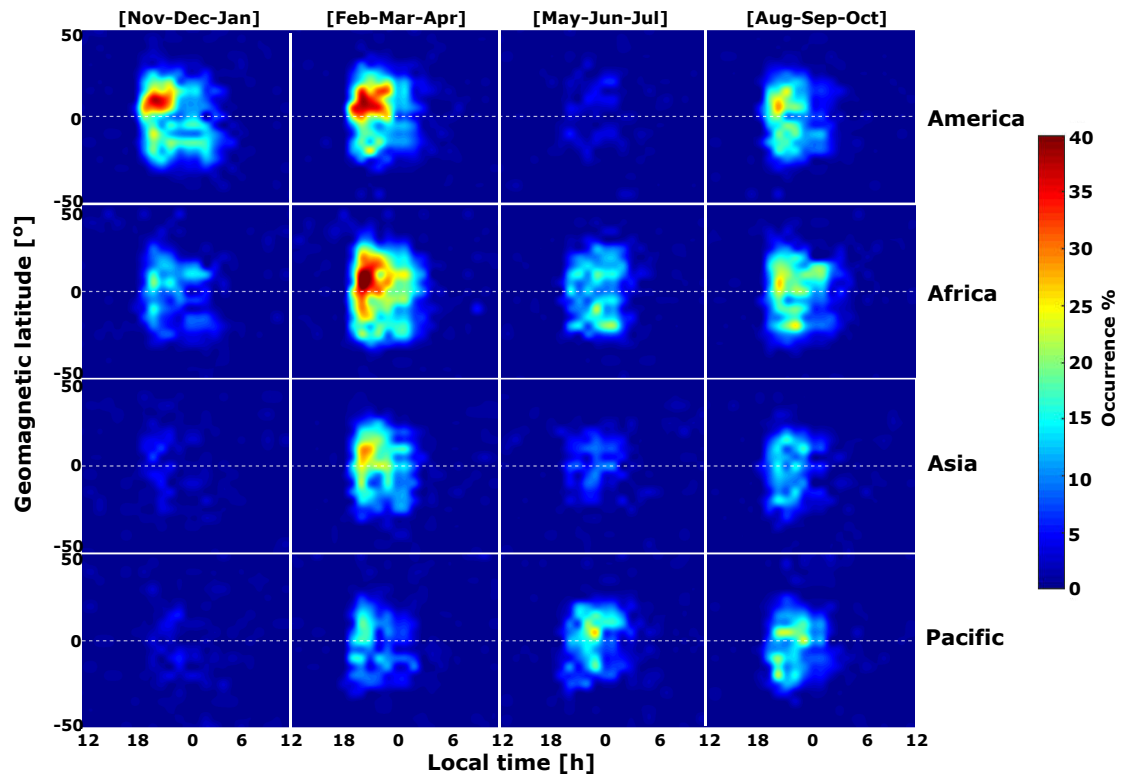


Figure 6. EPBs occurrence during the years 2012-2016 for different longitude sectors (regions) based on three-month intervals (seasons) within 5° geomagnetic latitude by 1 LT in the bin. White dashed lines represent geomagnetic dip equator.

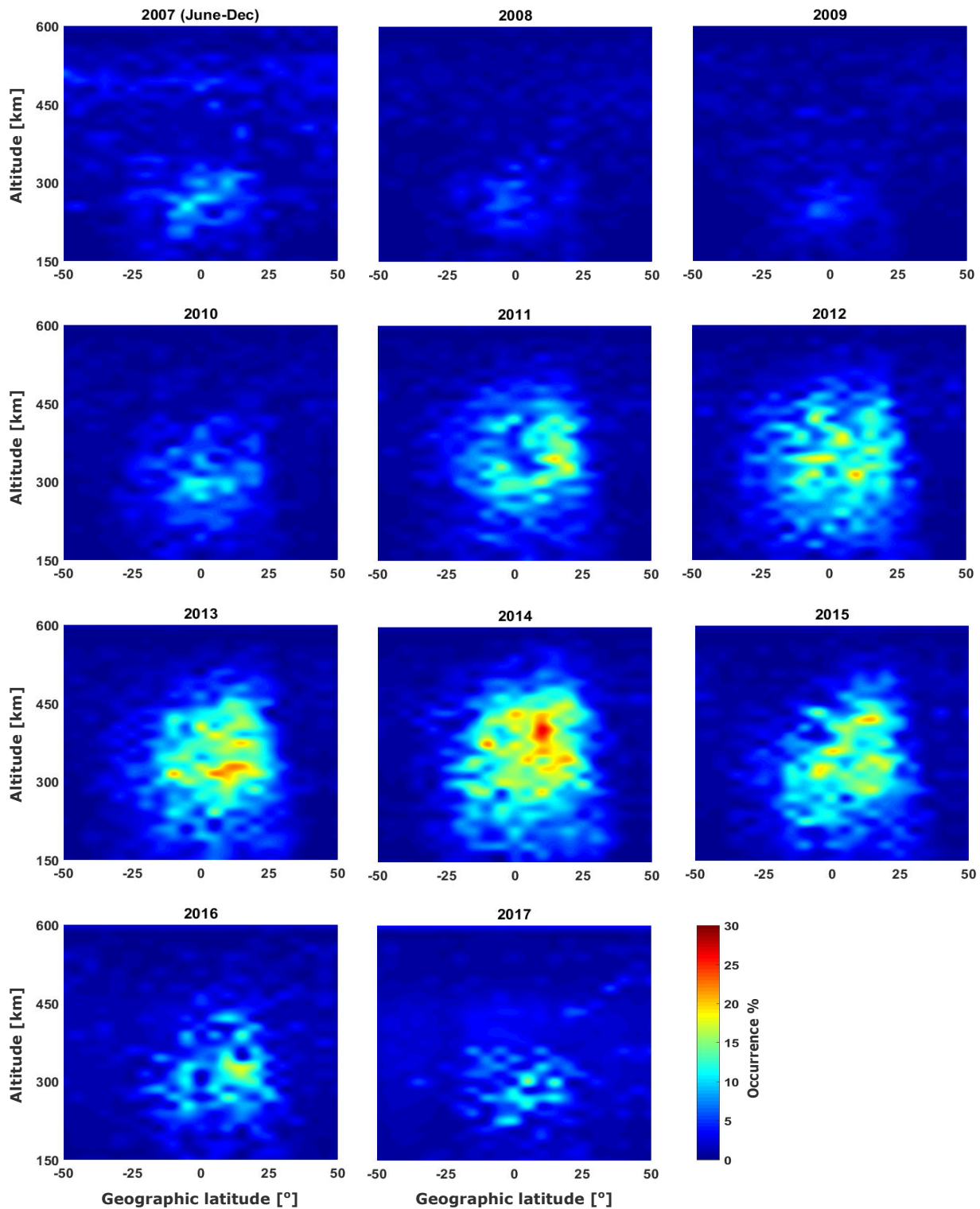


Figure 7. Vertical distribution of equatorial plasma bubbles in 5° latitude by 20 km altitude grid during the years between mid-of 2007 and 2017.

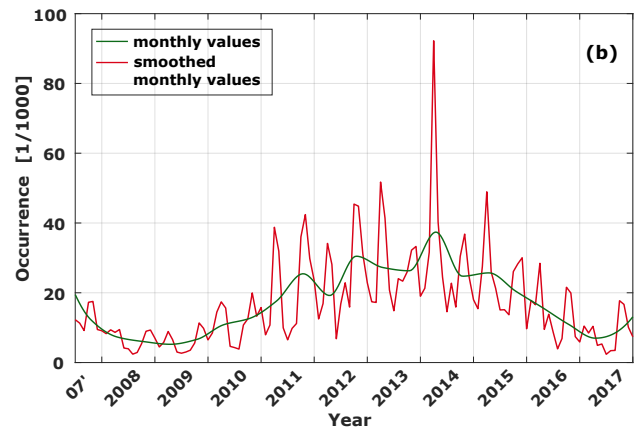
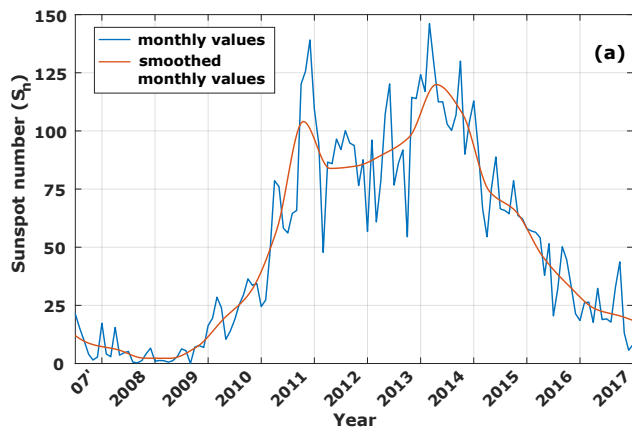


Figure 8. Comparison plot of (a) Sunspot cycle (b) Occurrence trend of equatorial plasma bubbles from mid-of 2007 to 2017, having monthly values and smoothed monthly values using low pass filter.