

Figure S1. Zonal mean QDT amplitudes (colors) for the NO_NLIN run with no nonlinear forcing mechanism enabled. (a,c) temperature, (b,d) zonal wind. (a,b) February conditions. (c,d) October conditions. Standard deviations σ are added as gray contour lines.

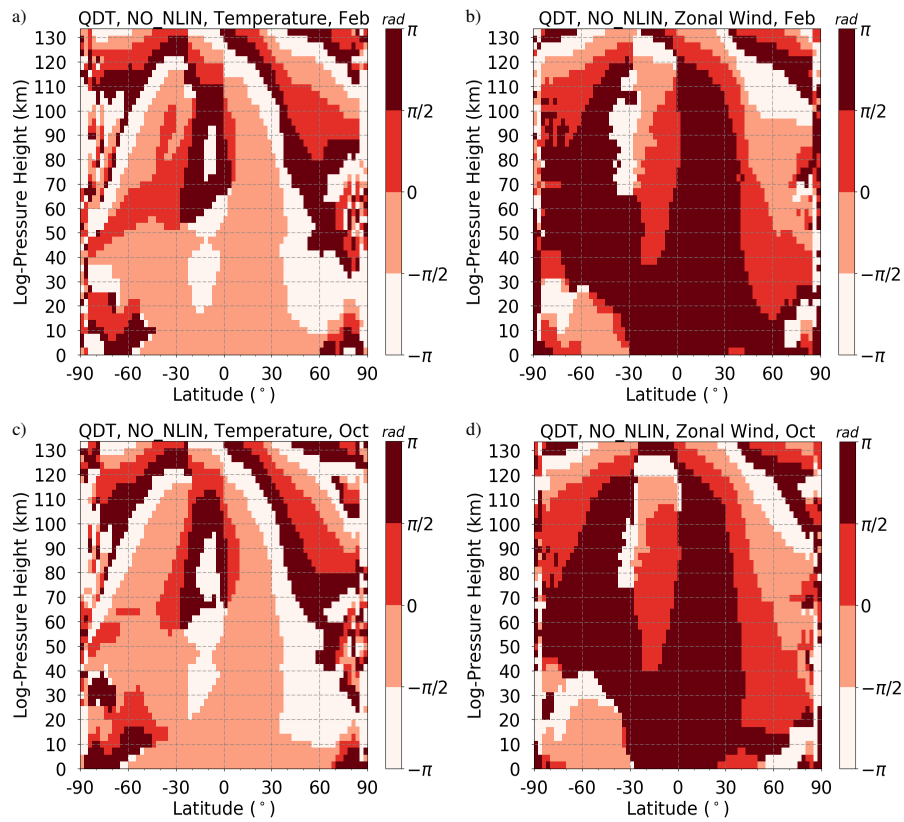


Figure S2. Zonal mean QDT phases for the NO_NLIN run with no nonlinear forcing mechanism enabled. (a,c) temperature, (b,d) zonal wind. (a,b) February conditions. (c,d) October conditions.

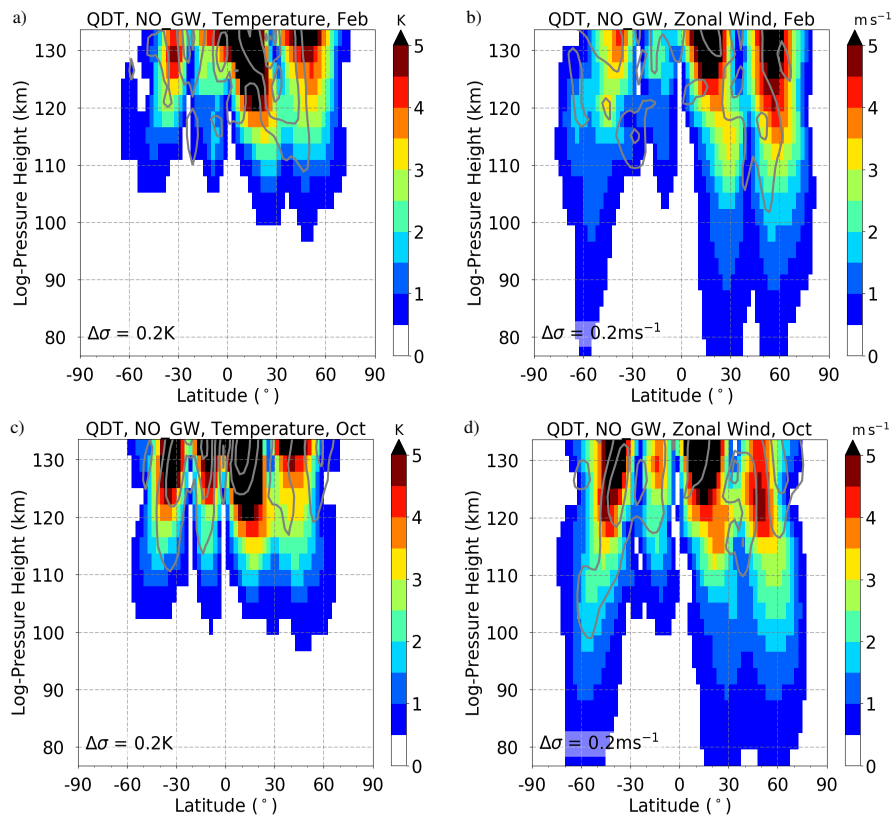


Figure S3. Zonal mean QDT amplitudes (colors) for the NO_NLIN run with no nonlinear forcing mechanism enabled. (a,c) temperature, (b,d) zonal wind. (a,b) February conditions. (c,d) October conditions. Standard deviations σ are added as gray contour lines.

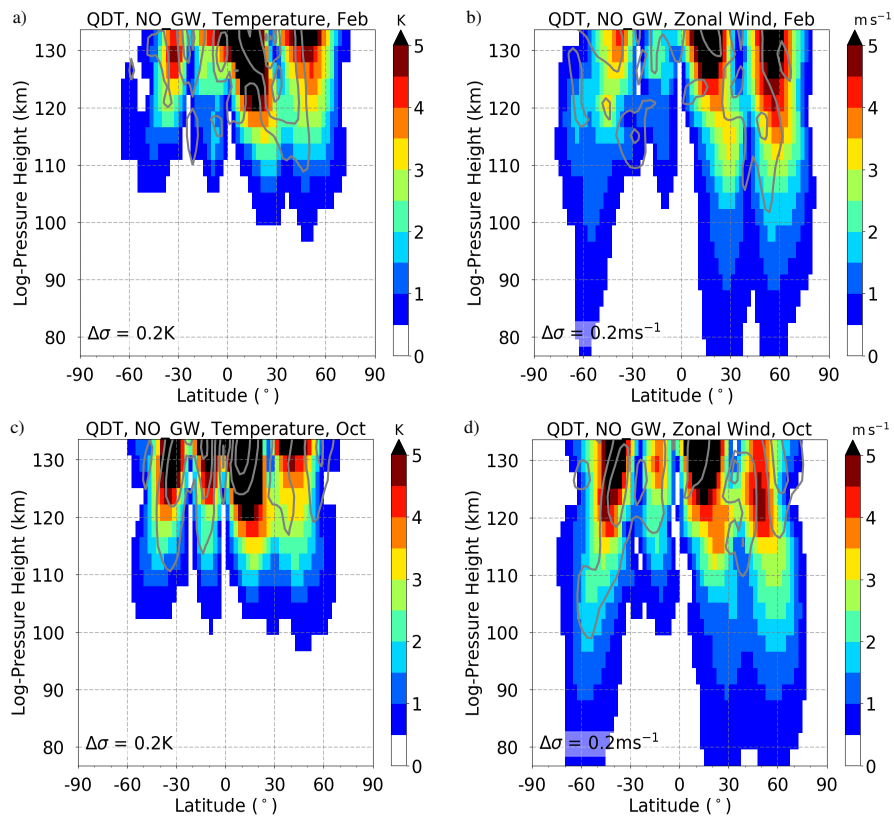


Figure S4. Zonal mean QDT phases for the NO_NLIN run with no nonlinear forcing mechanism enabled. (a,c) temperature, (b,d) zonal wind. (a,b) February conditions. (c,d) October conditions.