

We thank the referees for the comments. We will add additional descriptions and clarifications to the points raised. We repeat the concerns here, and add our response in italics.

Answers to Reviewer 1:

Description of the model need to improve, mainly about gravity wave routine.

*The model has been extensively described, e.g., in Lilienthal et al. (2017, 2018), Samtleben et al. (2019), Fröhlich et al. (2003a, 2007), Jacobi et al. (2006). We have added more references to the gravity wave routine description: Yigit et al. (2008, 2009).*

Page 3, line 23 - Information about the tidal forcing needs to be supplemented. Was the model run with DT, SDT, TDT and QDT modes on?

*In the model, all tidal waves are forced through the diurnal absorption of solar radiation. We added the following to clarify this: The diurnal cycle of solar radiation absorption leads to self-consistent forcing of tidal harmonics such as DT, SDT, TDT, and QDT.*

Page 5, line 2 - from Fig 1 it possible to see that largest amplitudes in the NH are found in February and October for meridional wind component whilst for zonal wind the largest amplitude appear in October for temperature in February, October and November. For the southern hemisphere, the largest amplitudes appear between April and October, being worthy of discussion.

*We have specified this as following: For an overview of the seasonal cycle of the QDT, Fig. 1 shows the QDT temperature and wind amplitudes at about 101 km height. In the northern hemisphere, amplitudes increase in autumn and winter in the latitude ranges 20°N-40°N and 50°N-70°N, respectively. Maximum wind amplitudes in the northern hemisphere are seen in February and October; for the meridional wind largest amplitudes are found in the 20°N-40°N range, while zonal wind and temperature QDT amplitudes during these months are seen at 50°N-70°N.*

*In the southern hemisphere maximum amplitudes appear also during autumn and winter (April to October) between 20°S-40°S and 50°S-70°S. The higher latitude maximum is more strongly expressed than in the northern hemisphere.*

Page 5, lines 11-12 - Please change this sentence - "The largest QDT amplitudes in the southern midlatitudes derived from the satellite data do not show agreement with the MUAM results in Fig. 1 (a)." - In fact, the model does not reproduce the observed amplitudes.

*We have changed this sentence to: Our simulated maximum in October, on the other hand, does not appear in the SABER/TIMED data. Also, the extrema at about 10°N in June, September and October as reported by Liu et al. (2015) do not match with the MUAM results, because the amplitudes in the model are much smaller than the ampli-*

*tudes observed by satellites.*

Page 7 (lines 33 and 34) and page 8 (lines 1-6): it would be interesting to separate the description NO\_LIN from the description NO\_GW.

*We have changed this to: In addition, a NO\_NLIN run was performed in which only quarterdiurnal nonlinear interactions have been removed. The amplitudes of the NO\_NLIN simulation are partly even larger than the ones in the REF simulation. This fact is also seen for the SOL simulations compared to the REF run. Larger amplitudes are also partly visible for the NO\_GW simulation, with only interactions between tides and gravity waves removed in the model tendency terms. The amplitudes (Fig. S1 and S3) and phases (Fig. S2 and S4) of these simulations are shown in the supplement, because amplitude and phase differences compared to the REF simulation are rather small.*

Page 8, lines 19-21 and 34 - The sentences about Figs 9 and 10 are confused. Please rewrite more clearly. Are the authors dealing with the NLIN or NO\_LIN case?

*We have specified this: In Fig. 9, we present QDT amplitude differences between the NO\_NLIN and REF simulation, which are scaled with density to highlight the actual source region of the waves. Here, the red (blue) areas denote larger amplitudes in NO\_NLIN (REF) simulations. This means that in red areas the run with one removed forcing has larger amplitudes than the REF run. We conclude that the removed nonlinear forcing must have destructively interfered with other QDT from other forcings (like solar or gravity wave forcing). The NLIN run (only nonlinear forcing) case is expected to show small QDT amplitudes because of the weak nonlinear forcing. Without destructive interference, the NO\_NLIN (without nonlinear forcing) simulation should show larger amplitudes than the NLIN run, but smaller ones than the REF run, because one forcing (nonlinear) is missing.*

In Fig 1 QDT amplitudes in HS are higher than in HN (mainly in zonal wind). Could the authors discuss these differences considering the different forcing mechanisms?

*This is difficult to say. The wave propagation depends on the background circulation, which of course differs between northern and southern hemisphere (temperature, and especially wind jet strength and distribution). It may be possible that the propagation conditions are better in southern hemisphere winter than in northern hemisphere winter, which leads to larger QDT amplitudes. The solar forcing depends on the ozone concentration in the respective hemisphere and these changes are small. The differences from nonlinear und gravity wave forcing between both hemispheres are also small, so that the differences in forcing cannot have the large impact that is seen in the amplitudes.*

Minor/Technical comments: Page 5, line 22 - change “bySmith et al.” for “by Smith et al.”

*Has been changed.*

Page 5, lines 32-33 - Please provide compound term on first appearance of acronyms.

*We have added this.*

Page 5, line 22- change “(Fig. 7 g, h the amplitudes” for “(Fig. 7 g, h) the amplitudes”  
In some sentences the word “model” is used insted “modeling”. Please, check.

*This is corrected.*

*We have corrected also another mistake on page 3, line 19-21: Old: In the ensemble runs, the ozone mixing ratio is chosen according to the Mauna Loa Observatory data for 2005 (e.g., 380 ppm for February 2005, [...]), because we do not intend to perform an ozone dependent trend analysis. New: We do not intend to perform an ozone and CO<sub>2</sub> dependent trend analysis, so we leave both constant in all simulations. Ozone is implemented as monthly mean zonal mean field for the year 2005 up to 50 km altitude taken from MERRA-2 (Modern-Era Retrospective Analysis for Research and Application, version 2) reanalysis data (MERRA, 2019 and Gelaro et al., 2017) for each of the ensemble members. Above 50 km, the ozone mixing ratio is assumed to decrease exponentially. In the ensemble runs, the CO<sub>2</sub> mixing ratio is chosen according to the Mauna Loa Observatory data for 2005 as global constant up to 80 km and an exponential decrease above (e.g., 380 ppm for February 2005; NOAA,2018 and Thoning et al., 1989).*

Answers to Reviewer 2:

The model underestimates the QDT. It will be a great help to understand the cause if we know how much the model underestimates the diurnal and semidiurnal tides. It is true that other mechanistic models also underestimate the tides. Nevertheless, there should be some discussion on this. The top height is 160 km, while the vertical wavelength is about 100 km, is the top height sufficiently high enough for the tide?

*We have added graphs from the current model version for diurnal and semidiurnal tides to the supplement and discuss this problem in more detail. The forcing of the QDT takes place up to a height of about 70 km for the important solar forcing. The wavelength is of the order of 100 km, but becomes substantially smaller at higher altitude (where non-linear and gravity interactions force QDT), therefore the model height is most probably sufficient for the simulation of the QDT.*

When describing solar tide, the reference cited is Yigit and Medvedev (2015). While the paper may be important, it gives impression that we only found out the solar tide after 2015. Some earlier papers should be included.

*We have added some earlier papers.*

I would consider add the word 'migrating' on the title.

*"migrating" is added to the title.*

P1 L8 '...certain seasons, latitudes, and altitudes...' Should be more specific.

*Changed this to: "...at lower and middle latitudes in the mesosphere and lower thermosphere."*

P5 L16 'In addition the amplitudes of other tides (DT, SDT, TDT) are also too small compared to observations (Lilienthal, 2018)' The reference only shows the TD. There is no information on DT and SDT.

*We added a brief discussion to this topic and put the graphics of the DT and SDT in the supplement. Fig. S5 in the supplement shows the DT and SDT zonal wind amplitudes for February and October from the MUAM REF simulation and the climatology from the Global Scale Wave Model (GSWM, 2020). The latitude-dependent structure and the increase of the amplitudes with altitude is correctly reproduced by the MUAM model. However, the maxima of the DT and SDT amplitudes in MUAM are at low latitudes and midlatitudes sometimes more than 50% lower than those of the GSWM. Also comparison with radar measurements (e.g. Manson et al., 1989, Pokhotelov et al., 2018) shows that the amplitudes of the DT and SDT are underestimated in MUAM.*

Figure 3 has different color scales for different terms making comparison much more difficult. Should use the same scale.

Figure 4 has the same issue with color scale.

*The scales in the figure are changed and standardized.*

Figures 3, 4 have grey color contours, which are not easy to see. Should consider using different color.

*We used a different color and hope it improved the visibility.*

All relevant changes in the manuscript are already listed above.

# Forcing mechanisms of the migrating quarterdiurnal tide

Christoph Geißler <sup>1</sup>, Christoph Jacobi <sup>1</sup>, and Friederike Lilienthal <sup>1</sup>

<sup>1</sup>Institute for Meteorology, Universität Leipzig, Stephanstr. 3, 04103 Leipzig, Germany

**Correspondence:** Christoph Geißler (christoph.geissler@uni-leipzig.de)

## Abstract.

We used a nonlinear mechanistic global circulation model to analyze the migrating quarterdiurnal tide (QDT) in the middle atmosphere with focus on its possible forcing mechanisms. These are absorption of solar radiation by ozone and water vapor, nonlinear tidal interactions, and gravity wave-tide interactions. We show a climatology of the QDT amplitudes, and we examined the contribution of the different forcing mechanisms on the QDT amplitude. To this end, we first extracted the QDT in the model tendency terms. Then, we separately removed the QDT contribution in different tendency terms. We find that the solar forcing mechanism is the most important one for the QDT, but also the nonlinear and gravity wave forcing mechanism play a role in ~~certain seasons, latitudes and altitudes~~ autumn and winter, particularly at lower and middle latitudes in the mesosphere and lower thermosphere. Furthermore, destructive interference between the individual forcing mechanisms is observed. Therefore, tidal amplitudes partly become even larger in simulations with removed nonlinear or gravity wave forcing mechanism.

## 1 Introduction

The dynamics of the upper mesosphere and lower thermosphere (MLT) are strongly influenced through atmospheric waves, especially solar tides (~~Yigit and Medvedev, 2015~~) (Forbes, 1982a, b; Forbes et al., 1994; Manson et al., 1989; Hagan et al., 1995; Jacobi et al., 2015). Tides are global-scale oscillations with periods of a solar day (24 h) and its harmonics (12 h, 8 h, 6 h), which mainly result from absorption of solar radiation by water vapor in the troposphere and ozone in the stratosphere (~~Xu et al., 2012~~) (Chapman and S., 1970; Andrews et al., 1987; Xu et al., 2012). Because of the decrease of density and conservation of energy, the tidal amplitudes increase with height (Chapman and S., 1970; Andrews et al., 1987) and reach a maximum in the MLT region before they dissipate. Tides with larger periods like diurnal tides (DTs), semidiurnal tides (SDTs) and terdiurnal tides (TDTs) usually have larger amplitudes than short-period tides like the quarterdiurnal tide (QDT). This is why in the past the QDT attracted less attention than the relatively well understood DT, SDT and TDT.

There are few observational and model studies on the QDT available. The QDT has been observed from satellites, so Azeem et al. (2016) analyzed temperature data from the Near-Infrared Spectrometer (NIRS) onboard the International Space Station (ISS) and from the Sounding of the Atmosphere using Broadband Emission Radiometry (SABER) instrument onboard the Thermosphere Ionosphere Mesosphere Energetics Dynamics (TIMED) satellite. They obtained an amplitude of the QDT which grew from  $\sim 5$  K near 100 km altitude to  $\sim 30$  K near 130 km. Liu et al. (2015) also used measurements from SABER/TIMED

temperature data to analyze the QDT in the MLT and its global structure and seasonal variability. They compared the results with different Hough modes. In their study, they noticed that between 70 and 90 km altitude at the equator and low latitudes, the (4,6) Hough mode dominated. Above 90 km, more than one Hough mode is visible, but the (4,6) mode remains predominant. The SABER/TIMED data show also a meridional structure with three amplitude maxima between 40°S and 40°N; two of which are centered at 30° and one above the equator. This structure is also seen in the analyses of Azeem et al. (2016) with two additional maxima at about 60° on both hemispheres. Jacobi et al. (2019) analysed QDT signatures in lower ionospheric sporadic E occurrence rates. They mainly found maxima during early and late winter at middle latitudes, which coincided with modeled vertical shear QDT maxima of the zonal wind.

The QDT has been also observed in radar wind measurements in the MLT region (e.g., Sivjee and Walterscheid, 1994; Smith et al., 2004;

(e.g., Sivjee and Walterscheid, 1994; Smith et al., 2004; Jacobi et al., 2017b; Guharay et al., 2018). Guharay et al. (2018) analyzed the variability of the QDT in the MLT over Brazilian low-latitude stations and found QDT wind amplitudes that reach  $2 \text{ ms}^{-1}$  with a maximum during late summer and fall. Jacobi et al. (2017b) analyzed MLT (80-100 km) radar data from Collm (51°N, 13°E) and Obninsk (55°N, 37°E). They found maximum amplitudes in winter with a long-term mean monthly mean zonal amplitude of  $7 \text{ ms}^{-1}$ . Bispectrum analysis of the Collm data showed that non-linear interaction is a possible forcing mechanism especially in winter and in the upper height gates accessible to the radar (Jacobi et al., 2018). MLT radar observations were also performed at Esrange (68°N, 21°E) by Smith et al. (2004). They observed maximum monthly mean amplitudes during winter which can exceed  $5 \text{ ms}^{-1}$ . They have also shown simulations of the QDT using a mechanistic model, which supports the results from the radar at Esrange and Collm with a similar timing and magnitude of the seasonal peak amplitude. Furthermore, Smith et al. (2004) analyzed the forcing mechanisms of the QDT and showed that the solar forcing mechanism is the most important one. Nevertheless, there is also a possible influence of a nonlinear interaction between different tides that may cause an additional QDT to the solar forced QDT. The theory of nonlinear interactions between tides was described by Teitelbaum and Vial (1991). Accordingly, a pure nonlinear QDT wave (period of 6 h) is generated when a nonlinear interaction between two SDTs (periods of 12 h) or between a TDT and a DT (periods of 8 h and 24 h) occurs. Similarly, it holds for the wave numbers  $k$ , that a  $k = 4$  wave can be formed by a nonlinear interaction between two existing waves with  $k = 2$  or between waves with  $k = 1$  and  $k = 3$ . Another possible source of tides is the interaction between gravity waves (GWs) and tides. For example, Miyahara and Forbes (1991) demonstrated such a mechanism for the TDT, but without consideration of the QDT. Simulations of GW-tide-gravity wave - tide interactions were performed by Ribstein and Achatz (2016), but they did not analyze higher harmonics than the SDT. Liu et al. (2006) showed nonlinear interactions between atmospheric tides at midlatitude radar measurements, as well as an interaction between tides and GWs-gravity waves from a bicoherence spectrum analysis. This was mainly found for the upper height gates considered.

To summarize, there is some indication for the QDT as a regular phenomenon especially visible in the MLT, but the data base is sparse and there is no final and quantitative information about the role of its different forcing mechanisms. Therefore, in this paper we analyze the migrating QDT in the middle atmosphere with the help of a mechanistic global circulation model, and focus on possible forcing mechanisms, i.e., the absorption of solar radiation by ozone and water vapor, nonlinear tidal interaction, and gravity wave-tide interaction. This will be done by separately analyzing these forcing mechanisms and their

relative contribution to the QDT tidal amplitudes. The paper is structured as follows: At first the model and experiments are described, and the QDT model climatology is presented. After that the results of the runs with different forcing mechanisms excluded are shown. Finally, the results will be discussed and summarized.

## 2 Description of the model and the experiments

The Middle and Upper Atmosphere Model (MUAM; Pogoreltsev, 2007; Pogoreltsev et al., 2007) is used to investigate the forcing mechanisms of migrating QDT with wave number 4. MUAM is a 3-D, primitive equation, mechanistic global circulation model based on the earlier [Cologne Model of the Middle Atmosphere - Leipzig Institute for Meteorology \(COMMA-LIMmodel\)](#), described by Jakobs et al. (1986), Fröhlich et al. (2003b) and Jacobi et al. (2006). Recent versions of the MUAM model are described by Lilienthal et al. (2017, 2018), Lilienthal and Jacobi (2019), Jacobi et al. (2019) and [Samtleben et al. \(2019\)](#). The model reaches from the surface at 1000 hPa to 160 km log-pressure height, with a constant scale height of  $H = 7$  km and a vertical resolution of 2.842 km. In the lowermost 30 km, i.e. in the lowest 10 model levels, the zonal mean temperatures are nudged to monthly mean zonal mean ERA-Interim reanalysis temperatures (ERA-Interim, 2018; Dee et al., 2011). The wave propagation remains unaffected by nudging, as this only alters the zonal mean. Above 30 km the background winds can develop freely in the model, and are only affected by the zonal mean temperature nudging below. In contrast to other model experiments (~~e.g., Pogoreltsev et al., 2007; Pogoreltsev, 2007; Lilienthal et al., 2017; ?; ?~~) ([e.g., Pogoreltsev et al., 2007; Pogoreltsev, 2007; Lilienthal et al., 2017; Samtleben et al., 2019](#)), here we do not include planetary wave forcing at the lower boundary to avoid undesired wave coupling with tides. In our experiments, we perform ensemble runs with 11 members using ERA-Interim data of the years 2000-2010, to describe interannual variability.

The solar heating through absorption, including water vapor, carbon dioxide, ozone, oxygen, and nitrogen, in the middle atmosphere is parameterized after Strobel (1978). [We do not intend to perform an ozone and  \$CO\_2\$  dependent trend analysis, so we leave both constant in all simulations.](#) Ozone is implemented as monthly mean zonal mean field for the year 2005 up to 50 km altitude taken from MERRA-2 (Modern-Era Retrospective Analysis for Research and Application, version 2) reanalysis data (MERRA-2, 2019; Gelaro et al., 2017) [for each of the ensemble members](#). Above 50 km, the ozone mixing ratio is assumed to decrease exponentially. In the ensemble runs, the ~~ozone- $CO_2$~~  mixing ratio is chosen according to the Mauna Loa Observatory data for 2005 (~~e.g., 380 ppm for February 2005, NOAA ESRL Global Monitoring Division, 2018; Thoning et al., 1989;~~ [because we do not intend to perform an ozone dependent trend analysis as a global constant up to 80 km and an exponential decrease above \(e.g., 380 ppm for February 2005, NOAA ESRL Global Monitoring Division, 2018; Thoning et al., 1989\).](#) Extreme ultraviolet (EUV) and chemical heating (Riese et al., 1994) are included (~~(see Fröhlich et al. (2003a))~~ [\(Fröhlich et al., 2003a\)](#)).

~~Tides are self-consistently forced in the model by the solar heating routines~~ [The diurnal cycle of solar radiation absorption leads to self-consistent forcing of tidal harmonics such as DT, SDT, TDT, and QDT.](#) The model is unable to produce non-migrating tides, because it contains no 3-D fields of ozone and water vapor, but only zonal means. In contrast to the version by Ermakova et al. (2017) and ~~Jacobi et al. (2017b)~~ [Jacobi et al. \(2017a\)](#), latent heat release is not included here. We used a

horizontal resolution of  $2.5^\circ \times 5.625^\circ$  for the model, which differs from the version of e.g., Lilienthal et al. (2017, 2018), to be able to better resolve the meridional structure of the QDT. In an earlier model version with  $5^\circ$  meridional resolution, essentially only one maximum in the QDT amplitudes per hemisphere was seen (Jacobi et al., 2019), while satellite observations (Azeem et al., 2016; Liu et al., 2015) show a more detailed meridional structure. Also from the linear theory including the QDT meridional structure representation by Hough modes, another result was expected, as shown by Azeem et al. (2016).

The ~~GW-gravity wave~~ routine, which is used in this model version, is an updated linear Lindzen-type parameterization (Lindzen, 1981; Jakobs et al., 1986) as described by Fröhlich et al. (2003b) and Jacobi et al. (2006). This parameterization is based on waves initialized at 10 km altitude, traveling in eight directions with phase speed between 5 and  $30 \text{ ms}^{-1}$ . These waves do not effectively propagate beyond the lowermost thermosphere, therefore the Lindzen-type routine is coupled through the eddy diffusion coefficient with a modified ~~parameterization after Yiğit et al. (2008)~~ nonlinear parameterization after Yiğit et al. (2008, 2009), initiated with ~~GWs-gravity waves~~ of higher horizontal phase speeds. The individually excited ~~GWs-gravity waves~~ are clearly separated through their different phase velocities. The distribution of tendency terms from both ~~GW-gravity waves~~ routines can be summed up to the total acceleration of the mean flow through ~~GWs-gravity waves~~. More information about the ~~GW-gravity wave~~ parameterization included in MUAM is given in ~~Lilienthal et al. (2018)~~ Lilienthal et al. (2017, 2018).

The model uses a time step of 120 s and starts with a spin-up time of 120 model days. In that time the heating rates are zonally averaged, which means there are no tides. After that, further 90 model days are simulated with zonally variable heating rates, so that there is tidal forcing now. The declination in this model version is fixed to the 15th day of the respective month. The following results that are presented are analyzed from the last 30 model days. In this time period the tidal amplitudes remain almost constant and show only small day-to-day variations. Lower atmosphere mean temperatures are nudged during the entire model run. However, since only zonal means are modified, tidal forcing and propagation remains possible.

Solar tides, including the QDT, may be generated by three different mechanisms, named solar heating, nonlinear tide-tide interactions, and ~~GW-tidal-gravity wave - tidal~~ interactions. More details of these forcing mechanisms and how they are represented in the MUAM model are described by Lilienthal et al. (2018). Here, we essentially follow their approach by removing different forcing mechanisms. To this end, we used a Fourier transform and removed the wave number 4 (which is equivalent to the migrating QDT, since there are no non-zonal structures except for the migrating tides in our MUAM version) amplitude from the respective forcing term during each time step and at each model grid point. To remove the solar forcing mechanism, the wave number 4 heating was removed from the radiation parameterization scheme. To remove the nonlinear tide-tide interactions, we separated the nonlinear terms, which are essentially the advection terms in the momentum equation and the temperature equation as has been done in Lilienthal et al. (2018). Then we removed the wave number 4 in these terms. Since these advection terms are responsible for wave-wave interaction, this strategy effectively removes the QDT forcing through non-linear interaction. To remove ~~GW-tidal-gravity wave - tidal~~ interaction, the total acceleration and heating through ~~GW-gravity wave~~ oscillations of wave number 4 are removed. Table 1 shows an overview of our simulations, in which different forcing mechanisms are eliminated separately: (i) ~~SOL with no GW-tidal~~ SOL with no gravity wave - tidal interactions and no nonlinear interactions, (ii) ~~NLIN~~ NLIN, without solar forcing mechanism and without ~~GW-tidal-gravity~~



5 wave - interactions, and (iii) ~~GW~~ GW without solar forcing and without nonlinear interactions. Effectively, these experiments represent model runs with only solar (~~SOL~~ SOL), nonlinear (~~NLIN~~ NLIN), and ~~GW~~ (~~GW~~ gravity wave (GW)) forcing of the QDT. Furthermore, two experiments were performed where only one process was removed, namely (iv) ~~NO\_NLIN~~ NO\_NLIN with removed nonlinear interactions, and (v) ~~NO\_GW without GW-tidal~~ NO\_GW without gravity wave - tidal interaction. In addition, a reference (~~REF~~ REF) run was performed with all forcing mechanisms enabled.

### 3 Results

#### 10 3.1 Reference simulation and QDT climatology

In the reference run (~~REF~~ REF), all forcing mechanisms (direct solar, ~~GW-tide~~ gravity wave - tide interactions and nonlinear interactions) are included. Results from this experiment will be described here in comparison with results from the literature. For an overview of the seasonal cycle of the QDT, Fig. 1 shows the QDT temperature and wind amplitudes at about ~~101~~ 101 km height. ~~The amplitudes maximize~~ In the northern hemisphere, amplitudes increase in autumn and winter ~~at higher midlatitudes~~ of both hemispheres with two maxima formed between in the latitude ranges  $20^{\circ}\text{-}40^{\circ}\text{N}$  and  $50^{\circ}\text{-}70^{\circ}\text{N}$ , respectively. ~~In~~ Maximum wind amplitudes in the northern hemisphere ~~are seen in February and October; for the meridional wind~~ largest amplitudes are found in ~~February and October; the~~ the  $20^{\circ}\text{N-}40^{\circ}\text{N}$  range, while zonal wind and temperature QDT amplitudes during these months are seen at  $50^{\circ}\text{N-}70^{\circ}\text{N}$ . In the southern hemisphere maximum amplitudes appear also during autumn and winter (April to October) between  $20^{\circ}\text{S-}40^{\circ}\text{S}$  and  $50^{\circ}\text{S-}70^{\circ}\text{S}$ . The higher latitude maximum is more strongly expressed than in the northern hemisphere.

Liu et al. (2015) showed a climatology of QDT temperature amplitudes from SABER/TIMED satellite data between  $50^{\circ}$  North and South over 10 years. The amplitudes presented by Liu et al. (2015) show maxima near  $30^{\circ}$  North and South and above the equator. Their QDT temperature amplitudes reach values of 0.5 K to 1.0 K between 70 km and 90 km, and at higher altitudes the amplitudes reach up to 4 K on an annual and long-term average. Thus, the amplitudes observed by Liu et al. (2015) are larger than in the MUAM simulation.

The maxima in February, April, May and August at  $40^{\circ}\text{N}$  from MUAM simulations in Fig. 1 (a) agree with the satellite measurements analyzed by Liu et al. (2015). Our simulated maximum in October, on the other hand, does not appear in the SABER/TIMED data. Also, the extrema at about  $10^{\circ}\text{N}$  in June, September and October ~~from as reported by~~ from as reported by Liu et al. (2015) do not match with the MUAM results. ~~The largest QDT, because the~~ amplitudes in the ~~southern midlatitudes derived from~~ the satellite data do not show agreement with the MUAM results in Fig. 1 (a). model are much smaller than the amplitudes observed by satellites.

Model simulations of the QDT temperature amplitudes at 100 km altitude by Smith et al. (2004) show a similar seasonal and latitudinal amplitude maximum distribution as seen in the MUAM results. Again, however, the amplitudes in the model simulations from Smith et al. (2004) are larger than in the MUAM results. Amplitudes in the MUAM simulations tend to underestimate other results by a factor of about 2 or 3. One reason for this is that water vapor in MUAM is implemented as zonal mean and not as 3-D field and that latent heat is not included as a QDT source in the model. In addition, the amplitudes of

other tides (DT, SDT, TDT) are also too small compared to observations (Lilienthal et al., 2018), so that nonlinear interaction processes are possibly underestimated. [Fig. S5 in the supplement shows the DT and SDT zonal wind amplitudes for February and October from the MUAM REF simulation and the climatology from the Global Scale Wave Model \(GSWM, 2020\). The latitude-dependent structure and the increase of the amplitudes with altitude is correctly reproduced by the MUAM model. However, the maxima of the DT and SDT amplitudes in MUAM are at low latitudes and midlatitudes sometimes more than 50% lower than those of the GSWM. Also comparison with radar measurements \(e.g., Manson et al., 1989; ?\) shows that the amplitudes of the DT and SDT are underestimated in MUAM.](#)

Meteor radar measurements of zonal wind QDT amplitudes at 50°N by ~~2Jacobi et al. (2018)~~ [Jacobi et al. \(2017b, 2018\)](#) show maxima in January and February, as well as in April and May, analogous to the MUAM simulations. The maxima in autumn seen in Fig. 1 b are also supported by their measurements. Also, the temporal and spatial distribution of zonal wind amplitudes by Smith et al. (2004) show good similarity in with the MUAM simulations. The same is the case for the meridional wind amplitudes in Fig. 1 c.

Ensemble simulations, which contain the solar, nonlinear and ~~GW-gravity wave~~ forcing mechanism for all wave numbers, are useful as a reference for all experiments because they represent a QDT that can be compared with observations. The results in the following are given as means of the 11 ensemble members. Since in the northern hemisphere the largest amplitudes are found in February and October (see Fig. 1) we selected these months for further analysis. In Fig. 2 the background climatology for the MUAM zonal mean circulation is shown for February (a, b) and October (c, d), for the parameters temperature (a, c) and zonal wind (b, d). The data are the model results for the years 2000—2010 (color coding), i.e. with the respective ERA-Interim reanalysis zonal mean temperatures used for nudging, with the corresponding standard deviations (contour lines).

The model zonal wind climatology agrees reasonably well with earlier empirical climatologies such as [COSPAR International Reference Atmosphere \(CIRA86\)](#) (Fleming et al., 1990) or the radar-based ~~GEWM-Global Empirical Wind Model (GEWM)~~ (Portnyagin et al., 2004; Jacobi et al., 2009) and the satellite-based ~~URAP-URAS Reference Atmosphere Project (URAP)~~ (Swinbank and Ortland, 2003). In February the easterly jet of the summer hemisphere is weaker in comparison with the climatologies. The same is true for the equatorial easterly winds in October. The model temperature shows general agreement with the empirical CIRA86 climatology. In February the stratopause and mesopause temperatures above the equator and low latitudes are about 10 K lower than predicted by the CIRA86 climatology. These differences are not seen in the comparison for October. MUAM produces a year-to-year variability (standard deviation  $\sigma$ ) especially in the areas of the strongest jets of the northern mid-latitudes in February (up to  $\sigma(u) = 8 \text{ ms}^{-1}$ ) and at the southern midlatitudes in October (up to  $\sigma(u) = 10 \text{ ms}^{-1}$ ). The reason for this is the annual variability in the formation of the polar vortex, which affects the strength of the jets and the temperature at the high and midlatitudes. This variability causes fluctuation of a few K or  $\text{ms}^{-1}$ . Elsewhere, the standard deviation is very small, and mostly amounts to less than  $\sigma(T) = 2 \text{ K}$  ( $\sigma(u) = 2 \text{ ms}^{-1}$ ,  $\sigma(v) = 0.5 \text{ ms}^{-1}$ ).

In comparison with the more recent Horizontal Wind Model (HWM14, Drob et al., 2015), the westerly wind jet in February in the middle atmosphere midlatitudes is much stronger ( $+20 \text{ ms}^{-1}$ ) in the MUAM simulation. The easterly wind jet in the mesosphere, on the other hand, is much weaker ( $-35 \text{ ms}^{-1}$ ) in the MUAM simulation than predicted HWM14. Also, the mesospheric wind reversal found at higher altitudes in HWM14 (100 km) than in the MUAM (80 km) simulation, especially

in the northern hemisphere. Similarly, the wind jets in the mesopause and lower thermosphere region are much weaker in the MUAM run than in HWM14. A better agreement is seen for October regarding the strength of the wind jets. However, in contrast to February, the wind reversal in October is higher in MUAM (80 km) than in HWM14 (70 km).

5 All QDT forcing terms, including the solar forcing, nonlinear forcing and the forcing resulting from ~~GW-tide-gravity wave - tide~~ interactions, are shown in Fig. 3 (thermal parameters) and Fig. 4 (wind parameters) for February (left panels) and October (right panels). All these forcing terms in the MUAM tendency equations are scaled by the factor  $\exp[-z(2H)^{-1}]$  in order to account for the growth rate of the amplitudes with altitude due to decreasing density. Thus, the figures show the source regions of the QDT. However, from the parameters shown in Fig. 3 and 4 no statement about the propagation conditions of the QDT is possible because the tide might be trapped in the source region, not being able to propagate upwards (Lilienthal et al., 2018). In general, the QDT in-situ forcing in February and October shows a similar global distribution.

Figure 3 shows temperature advection (a, b), the nonlinear component of adiabatic heating (c, d), the heating related to dissipating ~~GWs-gravity waves~~ (e, f), and direct solar heating (g, h). Note the different color scales in Fig. 3 to cover the maxima of all forcing terms. The thermal forcing (Fig. 3) of the QDT is dominated by direct solar heating in the troposphere and stratosphere (g, h). This is due to the absorption of solar radiation by water vapor in the troposphere and ozone in the stratosphere. In the mesosphere (80-110 km) nonlinear wave-wave interactions (a, b) play the most important role and show maxima at the equator in the stratosphere, mesosphere and lower thermosphere. Nonlinear adiabatic heating (c, d) maximizes in the upper stratosphere and mesosphere at the equator. However, this forcing is about one order of magnitude smaller than the nonlinear forcing and therefore will be disregarded in the following. In the lower thermosphere, the strongest QDT generation second to solar heating takes place through ~~GW-gravity wave~~ heating (e, f). Nevertheless, nonlinear effects continue to occur, and they are partly comparable in magnitude with the ~~GW-gravity wave~~ forcing.

Figure 4 shows QDT acceleration terms in the momentum equations, and thus refers to the wind parameters. The data are again scaled by  $\exp[-z(2H)^{-1}]$  according to energy conservation. The different panels show the zonal (a, b) and meridional wind advection (c, d) as well as the zonal (e, f) and meridional (g, h) acceleration due to ~~GWs-gravity waves~~. In the troposphere, stratosphere and large parts of the mesosphere, the nonlinear forcing of both the zonal (a, b) and meridional (c, d) QDT wind dominates over the ~~GW-gravity wave~~ forcing (e - h). Near the mesopause, ~~GW-gravity wave~~ zonal and meridional forcing is more important than the nonlinear forcing in zonal and meridional wind. The zonal ~~GW-gravity wave~~ forcing becomes relatively strong above 60 km at the northern middle latitudes. The ~~GW-gravity wave~~ forcing plays a major role above 110 km, where it dominates over other nonlinear forcings. In the meridional component, the wind advection (c, d) outweighs the ~~GW-gravity wave~~ forcing (g, h) at almost all altitudes.

### 3.2 Separation of quarterdiurnal generation mechanisms

To quantify the effect of each forcing mechanism on the QDT, we performed simulations with various forcing terms switched off (see Table 1). For the months of February and October, the QDT amplitudes and phases of the simulations ~~REF, SOL, GW and NLIN~~ REF, SOL, GW and NLIN are shown in Figs. 5 – 8 (Fig. 5 a, b temperature and Fig. 7 a, b zonal wind). Note that amplitudes are not scaled in contrast to the forcing terms in Fig. 3 and 4. In October the amplitudes tend to be a little stronger than in

February Fig. 5, and generally the amplitudes increase with height. In the ~~REF~~ REF run, there are four maxima for temperature and zonal wind. At 100 km altitude, amplitudes up to 0.5 K in temperature and  $1.5 \text{ ms}^{-1}$  in zonal wind are achieved. Thus, the modeled amplitudes are much smaller than reported from measurements (~~e.g., Liu et al., 2015; Azeem et al., 2016; ?; Guharay et al., 2018)~~ (e.g., Liu et al., 2015; Azeem et al., 2016; Jacobi et al., 2017b; Guharay et al., 2018), i.e. satellite measurements reveal temperature amplitudes of 5-10 K, depending on season and altitude, while radar data suggest wind amplitudes of  $2.5\text{-}5 \text{ ms}^{-1}$ .

In Fig. 5 c, d the ~~SOL~~ SOL simulations for February and October are shown for temperature and in Fig. 7 c, d for zonal wind. In this run, the ~~GW~~ gravity wave forcing mechanism and the nonlinear forcing mechanism have been removed from the terms of the model tendency equation as described in section 2. The QDT amplitudes in the ~~SOL~~ SOL run look very similar to those of the ~~REF~~ REF run in terms of amplitude magnitude and distribution. This agrees well with Fig. 3 g, h, showing that direct solar forcing is the strongest forcing mechanism and dominates the QDT in-situ generation. On closer examination, the midlatitudes of southern and northern hemisphere show even larger temperature and zonal wind amplitudes in the ~~SOL~~ SOL run than in the ~~REF~~ REF run, in particular during February. On the other hand, amplitudes during October tend to be slightly decreased in the ~~SOL~~ SOL simulation but with similar global structure like those of the ~~REF~~ REF simulation. The ~~GW~~ GW run only contains the ~~GW~~ gravity wave forcing and shows only small amplitudes for the temperature (Fig. 5 e, f, up to 2 K) and zonal wind (Fig. 7 e, f, up to  $3.5 \text{ ms}^{-1}$ ) compared to the ~~REF and SOL~~ REF and SOL simulations. Similar to the ~~REF~~ REF simulation, amplitudes gradually increase with height and maxima are located at northern low latitudes of the lower thermosphere, however, they are negligible below 115 km. This is most likely due to the fact that ~~GW-tide~~ gravity wave - tide interactions mainly take effect in the lower thermosphere (see Fig. 3 and 4).

Figures 5 g, h and 7 g, h show the QDT amplitudes for the ~~NLIN~~ NLIN run. This simulation contains only the forcing of nonlinear interactions. The amplitudes for the temperature component (Fig. 5 g, h) are comparable to those of the ~~GW~~ GW run with a maximum of 2 K. For the zonal wind component (Fig. 7 g, h) the amplitudes are even smaller than in the ~~GW~~ GW run with less than  $1.5 \text{ ms}^{-1}$ . Therefore, we cannot derive a clear meridional structure of the nonlinear QDT. Keeping in mind that nonlinear tidal interactions mainly occur in the mesosphere (see Fig. 3 and 4), one may conclude that QDTs generated by this mechanism are trapped near their forcing region and cannot propagate further upward.

In addition, a ~~NO\_NLIN (NO\_GW)~~ NO\_NLIN run was performed in which only quarterdiurnal nonlinear interactions (~~GW-tide interactions~~) have been removed. The amplitudes of the NO\_NLIN simulation are partly even larger than the ones in the REF simulation. This fact is also seen for the SOL simulations compared to the REF run. Larger amplitudes are also partly visible for the NO\_GW simulation, with only interactions between tides and gravity waves removed in the model tendency terms. The amplitudes (Fig. S1 and S3) and phases (Fig. S2 and S4) of these simulations are shown in the supplement (~~Figs. respectively~~), because amplitude and phase differences compared to the ~~REF~~ REF simulation are rather small. ~~However, similar to the SOL simulation, the amplitudes of NO\_NLIN (NO\_GW) are partly even larger than in REF.~~ Similar behavior has been reported by Smith et al. (2004), who removed the nonlinear QDT forcing in their model and concluded that tidal interactions rather reduce than enhance the QDT amplitude. In the following, this will be investigated in more detail by analyzing phase differences between the differently generated QDTs. This way, we intend to reveal possible interactions between these waves.

The corresponding phases of the ~~REF~~ REF simulation can be found in Fig. 6 a, b for temperature and in Fig. 8 a, b for zonal wind. The corresponding vertical wavelength can be determined at any latitude from the vertical phase gradient. The wavelength is defined by the vertical distance between two points with identical phases and should cover a complete span of phases. According to theory, an upward propagating wave must have a negative phase gradient. At latitudes with large amplitudes, the vertical wavelengths tend to be larger, as well. In the opposite case, the wavelengths are smaller when the amplitudes are small. In February the wavelengths reach 100 km and more. In October phases are very similar. Both months show large areas with constant phases, especially at low latitudes.

Also, the QDT phases for the temperature (Fig. 6 c, d) and zonal wind (Fig. 8 c, d) component of the ~~SOL~~ SOL simulation are almost identical with the results of the ~~REF~~ REF run. The phases of the ~~GW~~ GW run (Fig. 6 d, f and 8 d, f) clearly differ from the ~~REF~~ REF run, i.e. vertical wavelengths are shorter and the phase position and distribution have also changed. Looking at the QDT phases of the ~~NLIN~~ NLIN run for temperature (Fig. 6 g, h) and zonal wind (Fig. 8 g, h), the associated vertical wavelengths are again smaller compared to the ~~GW~~ GW run, based on a more irregular phase distribution.

In Fig. 9, we present ~~amplitude differences of the QDT between the NO\_NLIN and REF simulation (color coding) where QDT amplitude differences between the NO\_NLIN and REF simulation, which are scaled with density to highlight the actual source region of the waves. Here, the~~ red (blue) areas denote larger amplitudes in ~~NO\_NLIN~~ NO\_NLIN (~~REF~~) ~~; in other words, the amplitude increases (decreases) when the nonlinear QDT forcing mechanism is removed. Note that these amplitude differences are scaled by the growth rate of the tides with altitude to highlight the actual source region of the waves simulations. This means that in red areas the run with one removed forcing has larger amplitudes than the REF run. We conclude that the removed nonlinear forcing must have destructively interfered with other QDT from other forcings (like solar or gravity wave forcing). The NLIN run (only nonlinear forcing) case is expected to show small QDT amplitudes because of the weak nonlinear forcing. Without destructive interference, the NO\_NLIN (without nonlinear forcing) simulation should show larger amplitudes than the NLIN run, but smaller ones than the REF run, because one forcing (nonlinear) is missing.~~ Figure 9 a, c shows the temperature component and (b, d) the zonal wind component in February and October, respectively. Furthermore, the hatched areas denote destructive interference between the QDTs of ~~NLIN and SOL~~ NLIN and SOL, which are defined through their phases differences  $\Delta\Phi = \Phi_{NLIN} - \Phi_{SOL}$ :

$$120^\circ \leq \Delta\Phi \leq 240^\circ. \quad (1)$$

In case of a superposition of such destructively related ~~NLIN and SOL~~ NLIN and SOL waves, the amplitude of ~~NO\_NLIN~~ NO\_NLIN is expected to be larger than in ~~REF~~ REF, because the nonlinear (~~NLIN~~ NLIN) and solar (~~SOL~~ SOL) QDT of the ~~REF~~ REF run act against each other. Indeed, we observe regions for temperature (Fig. 9 a, c) and zonal wind (Fig. 9 b, d) in which the amplitudes in the ~~NO\_NLIN~~ NO\_NLIN run are larger than in the ~~REF~~ REF simulation, and at the same time, destructive interference between the nonlinear and solar QDT corresponds to these positive amplitude differences. Thus, we can conclude that the nonlinearly excited part of the QDT weakens the pure solar QDT amplitude in the ~~REF~~ REF simulation. The effect is more pronounced for the zonal wind than for temperature.

In addition to the interaction between nonlinear and solar QDT, an interaction between ~~GW-induced~~ gravity wave - induced QDT and solar QDT is also possible. For this reason we show the respective results in Fig. 10, analogue to Fig. 9. Colors denote the differences between the ~~NO\_GW and the REF~~ NO\_GW and the REF simulation, again scaled by the growth rate of the amplitudes with altitude. Red (blue) colors denote larger ~~NO\_GW (REF)~~ NO\_GW (REF) amplitudes. Areas of destructive interference (see Eq. 1 with  $\Delta\Phi = \Phi_{GW} - \Phi_{SOL}$ ) between the phases from the ~~GW and SOL~~ NO\_GW and SOL run are hatched. The difference between ~~NO\_GW and REF~~ NO\_GW and REF run shows that the amplitudes in the ~~NO\_GW~~ NO\_GW simulation are sometimes larger than in the ~~REF~~ REF run. This often happens in areas where destructive interference can be detected, but it is less well pronounced than in Fig. 9 for the nonlinear-solar QDT interaction. This means that the QDT owing to ~~GW-tide~~ gravity wave - tide interactions also tends to act against the solar QDT which leads to a decline in QDT amplitude in the ~~REF~~ REF simulation for temperature and zonal wind where both forcing mechanisms are present. The interaction between ~~GW and NLIN~~ GW and NLIN QDT is not shown separately because they turn out to be negligible.

#### 4 Discussion and conclusion

The results of the ~~REF~~ REF simulation show a consensus in the climatology and global structure of QDT in comparison with observations and other model studies. The amplitudes of the MUAM are relatively small for the QDT with up to  $2.5 \text{ ms}^{-1}$  in the zonal wind at 101 km altitude and  $5.0 \text{ ms}^{-1}$  at 120 km altitude in spring and autumn. For example, QDT amplitudes obtained from meteor radar measurements ~~(?)~~ (Jacobi et al., 2017b) are up to three times larger than in the MUAM simulations. However, it is a known issue that numerical models tend to underestimate the tides in some regions and seasons (e.g., Smith, 2012; Pokhotelov et al., 2018).

In our simulations, the meridional structure of QDT amplitudes shows 3-4 maxima in both the temperature and zonal wind component. These are located at low ( $10^\circ$ - $30^\circ$ ) and middle latitudes ( $40^\circ$ - $70^\circ$ ) of the respective hemisphere. These maxima at low and midlatitudes are also present in the NIRS and SABER temperature measurements (Liu et al., 2015; Azeem et al., 2016). Meteor radar measurements at northern midlatitudes ~~(?)~~ (Jacobi et al., 2017b) confirm our QDT wind maxima in winter, spring and autumn. The maximum of the QDT wind amplitudes at low latitudes has been proven by meteor radar measurements over Brazil (Guharay et al., 2018). They show maxima below 100 km in spring and autumn like the MUAM simulations.

In the present paper we focused on forcing mechanisms of the QDT. To this end, we first compared all possible sources of the migrating QDTs in our simulations following the approach of Lilienthal et al. (2018). These are (i) the absorption of solar radiation by water vapor and ozone, (ii) nonlinear tidal interactions between migrating DTs and TDTs and the self-interaction of migrating SDTs and (iii) nonlinear interactions between ~~GWs~~ gravity waves and tides. To our knowledge, this is the first time to present the global distribution of quarterdiurnal in-situ forcing from a numerical model. In summary, the solar forcing dominates in the troposphere and stratosphere, the nonlinear forcing predominates in the mesosphere and the ~~GW~~ gravity wave forcing mainly takes place in the mesosphere and thermosphere. These results do not allow to draw conclusions on the upward propagation of the QDT, but only show local excitation.



For this reason, we adapt the idea of Smith et al. (2004), who performed simulations with individual forcing mechanisms removed. In addition to Smith et al. (2004), we also consider ~~GW-tide~~gravity wave - tide interactions. Some of our simulations are designed in a way that only a single forcing mechanism remains and the other two sources are removed (~~SOL, NLIN and~~  
35 ~~GW~~SOL, NLIN and GW), in other simulations only one of the sources was removed (~~NO\_NLIN, NO\_GW~~NO\_NLIN, NO\_GW).

As a result, we find that the solar forcing mechanism is the most important and dominant one of all forcing mechanisms, since the removal of direct quarterdiurnal solar heating (~~GW and NLIN~~GW and NLIN runs) leads to a significant decrease in the QDT amplitude. Smith et al. (2004) came to the same conclusion, when they removed the quarterdiurnal solar forcing in  
5 their simulations.

We also showed that the amplitudes resulting from the ~~GW~~gravity wave forcing mechanism (~~GW~~GW) are smaller than the resulting amplitudes of the direct solar forcing (~~SOL~~SOL), but larger than those from the nonlinear forcing mechanisms (~~NLIN~~NLIN). In agreement with the results of Smith et al. (2004), nonlinear tidal interactions seem to play a minor role for the total QDT amplitudes, although we found distinct sources of nonlinear quarterdiurnal in-situ excitation in the mesosphere  
10 (see above). This allows the conclusion that the QDT from local nonlinear forcing mechanisms can not propagate and is, to a large degree, trapped in the vertical domain. Significant nonlinear QDT amplitudes only exist in the thermosphere. In the temperature component, QDT amplitudes of the ~~NLIN and GW~~NLIN and GW simulation are comparable in magnitude. In the zonal wind component, they are smaller in ~~NLIN than in GW~~NLIN than in GW. For the ~~GW and NLIN~~GW and NLIN simulations we note relatively short vertical wavelengths, accompanied by small QDT amplitudes, compared to the ~~SOL and~~  
15 ~~REF~~SOL and REF runs. So we can state that if the amplitudes are small, the vertical wavelength is shorter as well. Lilienthal et al. (2018) has found a similar relation for the vertical wavelengths of the TDT.

In the ~~SOL~~SOL simulation, which only contains the solar forcing, we see that the amplitudes are in some cases larger than in the ~~REF~~REF run. A similar feature has been observed by Smith et al. (2004). Here, we compare phase and amplitude differences between our different simulations to investigate the physical explanation behind. We find that the amplitudes in  
20 simulations with removed forcing mechanisms (~~NO\_NLIN and NO\_GW~~NO\_NLIN and NO\_GW) increase compared to ~~REF~~REF in the same areas where destructive phase relations between the differently generated QDTs are detected. This leads to the conclusion that QDTs excited by different mechanisms counteract rather than enhance each other. Thus, removing an individual forcing mechanism in ~~NO\_NLIN or NO\_GW~~NO\_NLIN or NO\_GW also avoids the destructive interference and the remaining QDT can propagate freely, resulting in larger amplitudes.

This destructive relation appears to be more clear between the nonlinear tidal forcing and the direct solar forcing than  
25 between the ~~GW-induced~~gravity wave - induced forcing and the solar forcing. Note, however, that nonlinear tidal interactions generally have a smaller impact on the QDT than ~~GW-tide~~gravity wave - tide interactions, as described above. We did not present phase relations between the nonlinear and ~~GW~~gravity wave forcing because these turned out to be small. Apparently, the dominating solar forcing has to be involved in the destructive phase relation. In future, an implementation of a latent heat release parameterization according to Ermakova et al. (2019) and ~~Jacobi et al. (2017b)~~Jacobi et al. (2017a) and three-dimensional ozone (Suvorova and Pogoreltsev, 2011) and water vapor (Ermakova et al., 2017) fields into the model is planned, which may help to increase tidal amplitudes towards more realistic magnitudes. Another important issue is the careful

treatment of GWsgravity waves, because we demonstrated that GWs-gravity waves are the most important source of QDTs above the mesopause. In MUAM, GWs-gravity waves are currently implemented via two coupled parameterizations. These two parameterizations could be replaced by the original whole atmosphere scheme, such as provided by Yiğit et al. (2008). Furthermore, a sensitivity study with respect to the strength of the individual forcing terms may contribute to a better understanding of the forcing mechanisms and interactions. Thereby, we intend to show their impact on QDT amplitudes and the background circulation. Further examination of dominating Hough modes may help explain the different meridional structures at different altitudes.

10 *Code availability.* The MUAM model code can be obtained from the corresponding author on request.

*Author contributions.* CG performed and designed the MUAM model runs together with FL. CG drafted the first version of the text. Analysis and interpretation of the results were contributed by CJ and FL.

*Competing interests.* C. Jacobi is one of the Editors-in-Chief of Annales Geophysicae. The authors declare that no competing interests are present.

15 *Acknowledgements.* This research has been funded by Deutsche Forschungsgemeinschaft under grant JA 836/34-1. MERRA-2 global ozone fields were ~~provides~~provided by NASA through <https://disc.gsfc.nasa.gov/datasets?keywords=%22MERRA-2%22&page=1&source=Models%20FAnalyses%20MERRA-2> (MERRA-2, 2019; Gelaro et al., 2017). Mauna Loa carbon dioxide mixing ratios were provided by NOAA through [ftp://aftp.cmdl.noaa.gov/data/trace\\_gases/co2/flask/surface/](ftp://aftp.cmdl.noaa.gov/data/trace_gases/co2/flask/surface/) (Thoning et al., 1989; NOAA ESRL Global Monitoring Division, 2018). ERA-Interim data have been provided by ECMWF on <https://apps.ecmwf.int/datasets/data/interim-full-moda/levtype=sfc/> (Dee et al., 2011; ERA-Interim, 2018). GSWM data of tides were provided by HAO through <https://www2.hao.ucar.edu/gswm-global-scale-wave-model>.

20



## References

- Andrews, D. G., Leovy, C. B., and Holton, J. R.: Middle atmosphere dynamics, vol. 40, Academic press, 1987.
- Azeem, I., Walterscheid, R. L., Crowley, G., Bishop, R. L., and Christensen, A. B.: Observations of the migrating semidiurnal and quaddiurnal  
25 tides from the RAIDS/NIRS instrument, *J. Geophys. Res.: Space Phys.*, 121, 4626–4637, <https://doi.org/10.1002/2015JA022240>, 2016.
- Chapman, S. and S., L. R.: Atmospheric Tides, D. Reidel Publishing Company (Dordrecht, Holland), 1970.
- Dee, D. P., Uppala, S. M., Simmons, A. J., Berrisford, P., Poli, P., Kobayashi, S., Andrae, U., Balmaseda, M. A., Balsamo, G., Bauer, P.,  
Bechtold, P., Beljaars, A. C. M., van de Berg, L., Bidlot, J., Bormann, N., Delsol, C., Dragani, R., Fuentes, M., Geer, A. J., Haimberger, L.,  
Healy, S. B., Hersbach, H., Hólm, E. V., Isaksen, I., Kållberg, P., Köhler, M., Matricardi, M., McNally, A. P., Monge-Sanz, B. M., Mor-  
30 crette, J.-J., Park, B.-K., Peubey, C., de Rosnay, P., Tavolato, C., Thépaut, J.-N., and Vitart, F.: The ERA-Interim reanalysis: configuration  
and performance of the data assimilation system, *Quart. J. Roy. Meteor. Soc.*, 137, 553–597, <https://doi.org/10.1002/qj.828>, 2011.
- Drob, D. P., Emmert, J. T., Meriwether, J. W., Makela, J. J., Doornbos, E., Conde, M., Hernandez, G., Noto, J., Zawdie, K. A., McDon-  
ald, S. E., Huba, J. D., and Klenzing, J. H.: An update to the Horizontal Wind Model (HWM): The quiet time thermosphere, *Earth and  
Space Sci.*, 2, 301–319, <https://doi.org/10.1002/2014EA000089>, available at: <https://github.com/rilma/pyHWM14>, last access: 10 Septem-  
35 ber 2019, 2015.
- ERA-Interim: Monthly mean temperature and geopotential fields on pressure levels 1979-date; European Reanalysis Interim, available at:  
<https://apps.ecmwf.int/datasets/data/interim-full-mode/levtype=pl/>, compiled by Thoning, K. W., Kitzis, D. R., and Croftwell, A., Version  
2015-12, updated annually, 2018.
- Ermakova, T. S., Statnaya, I. A., Fedulina, I. N., Suvorova, E. V., and Pogoreltsev, A. I.: Three-dimensional semi-empirical climate model  
of water vapor distribution and its implementation to the radiation module of the middle and upper atmosphere model, *Russ. Meteorol.  
Hydrol.*, 42, 594–600, <https://doi.org/10.3103/S1068373917090060>, 2017.
- 5 Ermakova, T. S., Aniskina, O. G., Statnaia, I. A., Motsakov, M. A., and Pogoreltsev, A. I.: Simulation of the ENSO influence on the extra-  
tropical middle atmosphere, *Earth Planets and Space*, 71, 8, <https://doi.org/10.1186/s40623-019-0987-9>, 2019.
- Fleming, E. L., Chandra, S., Barnett, J., and Corney, M.: Zonal mean temperature, pressure, zonal wind and geopotential height as functions  
of latitude, *Adv. Space Res.*, 10, 11 – 59, [https://doi.org/10.1016/0273-1177\(90\)90386-E](https://doi.org/10.1016/0273-1177(90)90386-E), 1990.
- Forbes, J., Manson, A., Vincent, R., Fraser, G., Vial, F., Wand, R., Avery, S., Clark, R., Johnson, R., Roper, R., Schindler, R., Tsuda, T., and  
10 Kazimirovsky, E.: Semidiurnal tide in the 80–150 km region: an assimilative data analysis, *J. Atmos. Sol.-Terr. Phys.*, 56, 1237 – 1249,  
[https://doi.org/10.1016/0021-9169\(94\)90062-0](https://doi.org/10.1016/0021-9169(94)90062-0), 1994.
- Forbes, J. M.: Atmospheric tides: 1. Model description and results for the solar diurnal component, *J. Geophys. Res.: Space Phys.*, 87, 5222–  
5240, <https://doi.org/10.1029/JA087iA07p05222>, 1982a.
- Forbes, J. M.: Atmospheric tide: 2. The solar and lunar semidiurnal components, *J. Geophys. Res.: Space Phys.*, 87, 5241–5252,  
15 <https://doi.org/10.1029/JA087iA07p05241>, 1982b.
- Fröhlich, K., Pogoreltsev, A., and Jacobi, C.: The 48 Layer COMMA-LIM Model: Model description, new Aspects, and Climatology, *Rep.  
Inst. Meteorol. Univ. Leipzig*, pp. 161–189, <http://nbn-resolving.de/urn:nbn:de:bsz:15-qucosa-217766>, 2003a.
- Fröhlich, K., Pogoreltsev, A., and Jacobi, C.: Numerical simulation of tides, Rossby and Kelvin waves with the COMMA-LIM model, *Adv.  
Space Res.*, 32, 863 – 868, [https://doi.org/10.1016/S0273-1177\(03\)00416-2](https://doi.org/10.1016/S0273-1177(03)00416-2), 2003b.
- 20 Gelaro, R., McCarty, W., Suárez, M. J., Todling, R., Molod, A., Takacs, L., Randles, C. A., Darmenov, A., Bosilovich, M. G., Reichle, R.,  
Wargan, K., Coy, L., Cullather, R., Draper, C., Akella, S., Buchard, V., Conaty, A., da Silva, A. M., Gu, W., Kim, G.-K., Koster, R.,

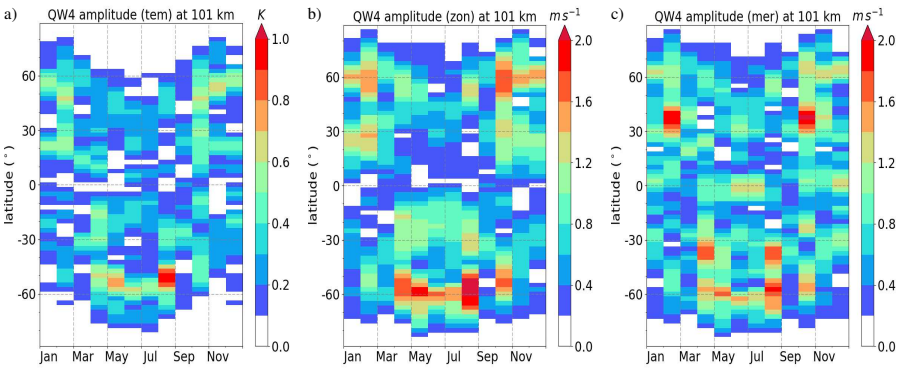
- Lucchesi, R., Merkova, D., Nielsen, J. E., Partyka, G., Pawson, S., Putman, W., Rienecker, M., Schubert, S. D., Sienkiewicz, M., and Zhao, B.: The Modern-Era Retrospective Analysis for Research and Applications, Version 2 (MERRA-2), *J. Climate*, 30, 5419–5454, <https://doi.org/10.1175/JCLI-D-16-0758.1>, 2017.
- 25 GSWM: Amplitudes and phases of the diurnal and semidiurnal migrating tides from Global Scale Wave Model. Available at: <https://www2.hao.ucar.edu/gswm-global-scale-wave-model>, last access: 02. March 2020, 2020.
- Guharay, A., Batista, P. P., Buriti, R. A., and Schuch, N. J.: On the variability of the quarter-diurnal tide in the MLT over Brazilian low-latitude stations, *Earth Planets and Space*, 70, 140, <https://doi.org/10.1186/s40623-018-0910-9>, 2018.
- Hagan, M. E., Forbes, J. M., and Vial, F.: On modeling migrating solar tides, *Geophys. Res. Lett.*, 22, 893–896, <https://doi.org/10.1029/95GL00783>, 1995.
- 30 Jacobi, C., Portnyagin, Y., Solovjova, T., Hoffmann, P., Singer, W., Fahrutdinova, A., Ishmuratov, R., Beard, A., Mitchell, N., Muller, H., Schminder, R., Kürschner, D., Manson, A., and Meek, C.: Climatology of the semidiurnal tide at 52–56°N from ground-based radar wind measurements 1985–1995, *J. Atmos. Sol.-Terr. Phys.*, 61, 975 – 991, [https://doi.org/10.1016/S1364-6826\(99\)00065-6](https://doi.org/10.1016/S1364-6826(99)00065-6), 1999.
- Jacobi, C., Fröhlich, K., and Pogoreltsev, A.: Quasi two-day-wave modulation of gravity wave flux and consequences for the planetary wave propagation in a simple circulation model, *J. Atmos. Sol.-Terr. Phys.*, 68, 283 – 292, <https://doi.org/10.1016/j.jastp.2005.01.017>, 2006.
- 35 Jacobi, C., Fröhlich, K., Portnyagin, Y., Merzlyakov, E., Solovjova, T., Makarov, N., Rees, D., Fahrutdinova, A., Guryanov, V., Fedorov, D., Korotyshkin, D., Forbes, J., Pogoreltsev, A., and Kürschner, D.: Semi-empirical model of middle atmosphere wind from the ground to the lower thermosphere, *Adv. Space Res.*, 43, 239 – 246, <https://doi.org/https://doi.org/10.1016/j.asr.2008.05.011>, 2009.
- Jacobi, C., Ermakova, T., Mewes, D., and Pogoreltsev, A. I.: El Niño influence on the mesosphere/lower thermosphere circulation at midlatitudes as seen by a VHF meteor radar at Collm (51.3° N, 13° E), *Adv. Radio Sci.*, 15, 199–206, <https://doi.org/10.5194/ars-15-199-2017>, 2017a.
- Jacobi, C., Krug, A., and Merzlyakov, E.: Radar observations of the quarterdiurnal tide at midlatitudes: Seasonal and long-term variations, *J. Atmos. Sol.-Terr. Phys.*, 163, 70 – 77, <https://doi.org/10.1016/j.jastp.2017.05.014>, 2017b.
- 5 Jacobi, C., Geißler, C., Lilienthal, F., and Krug, A.: Forcing mechanisms of the 6 h tide in the mesosphere/lower thermosphere, *Adv. Radio Sci.*, 16, 141–147, <https://doi.org/10.5194/ars-16-141-2018>, <https://www.adv-radio-sci.net/16/141/2018/>, 2018.
- Jacobi, C., Arras, C., Geißler, C., and Lilienthal, F.: Quarterdiurnal signature in sporadic E occurrence rates and comparison with neutral wind shear, *Ann. Geophys.*, 37, 273–288, <https://doi.org/10.5194/angeo-37-273-2019>, 2019.
- 10 Jakobs, H., Bischof, M., Ebel, A., and Speth, P.: Simulation of gravity wave effects under solstice conditions using a 3-D circulation model of the middle atmosphere, *J. Atmos. Sol.-Terr. Phys.*, 48, 1203 – 1223, [https://doi.org/10.1016/0021-9169\(86\)90040-1](https://doi.org/10.1016/0021-9169(86)90040-1), 1986.
- Lilienthal, F. and Jacobi, C.: Nonlinear forcing mechanisms of the terdiurnal solar tide and their impact on the zonal mean circulation, *Ann. Geophys. Disc.*, 2019, 1–18, <https://doi.org/10.5194/angeo-2019-37>, 2019.
- Lilienthal, F., Jacobi, C., Schmidt, T., de la Torre, A., and Alexander, P.: On the influence of zonal gravity wave distributions on the Southern Hemisphere winter circulation, *Ann. Geophys.*, 35, 785–798, <https://doi.org/10.5194/angeo-35-785-2017>, 2017.
- 15 Lilienthal, F., Jacobi, C., and Geißler, C.: Forcing mechanisms of the terdiurnal tide, *Atmos. Chem. Phys.*, 18, 15 725–15 742, <https://doi.org/10.5194/acp-18-15725-2018>, 2018.
- Lindzen, R. S.: Turbulence and stress owing to gravity wave and tidal breakdown, *J. Geophys. Res.: Oceans*, 86, 9707–9714, <https://doi.org/10.1029/JC086iC10p09707>, 1981.
- 20 Liu, M., Xu, J., Yue, J., and Jiang, G.: Global structure and seasonal variations of the migrating 6-h tide observed by SABER/TIMED, *Science China Earth Sciences*, 58, 1216–1227, <https://doi.org/10.1007/s11430-014-5046-6>, 2015.

- Liu, R., Lu, D., Yi, F., and Hu, X.: Quadratic nonlinear interactions between atmospheric tides in the mid-latitude winter lower thermosphere, *J. Atmos. Sol.-Terr. Phys.*, 68, 1245 – 1259, <https://doi.org/10.1016/j.jastp.2006.03.004>, 2006.
- Manson, A., Meek, C., Teitelbaum, H., Vial, F., Schindler, R., Kürschner, D., Smith, M., Fraser, G., and Clark, R.: Climatologies of semi-diurnal and diurnal tides in the middle atmosphere (70–110 km) at middle latitudes (40–55°), *J. Atmos. Sol.-Terr. Phys.*, 51, 579 – 593, [https://doi.org/10.1016/0021-9169\(89\)90056-1](https://doi.org/10.1016/0021-9169(89)90056-1), 1989.
- MERRA-2: Monthly mean ozone fields on pressure levels 1979-date; Modern-Era Retrospective analysis for Research and Applications, Version 2, available at: <https://disc.gsfc.nasa.gov/datasets?keywords=%22MERRA-2%22&page=1&source=Models%2FAnalyses%20MERRA-2>, last access: 10 September 2019, 2019.
- 30 Miyahara, S. and Forbes, J. M.: Interactions between gravity waves and the diurnal tide in the mesosphere and lower thermosphere, *J. Meteor. Res. Japan. Ser. II*, 69, 523–531, [https://doi.org/10.2151/jmsj1965.69.5\\_523](https://doi.org/10.2151/jmsj1965.69.5_523), 1991.
- NOAA ESRL Global Monitoring Division: Atmospheric Carbon Dioxide Dry Air Mole Fractions from quasi-continuous measurements at Mauna Loa, Hawaii, National Oceanic and Atmospheric Administration (NOAA), Earth System Research Laboratory (ESRL), Global Monitoring Division (GMD), Boulder, Colorado, USA, available at: <https://www.esrl.noaa.gov/gmd/ccgg/trends/data.html>, last access: 10
- 35 September 2019, 2018.
- Pancheva, D., Mitchell, N., Hagan, M., Manson, A., Meek, C., Luo, Y., Jacobi, C., Kürschner, D., Clark, R., Hocking, W., MacDougall, J., Jones, G., Vincent, R., Reid, I., Singer, W., Igarashi, K., Fraser, G., Nakamura, T., Tsuda, T., Portnyagin, Y., Merzlyakov, E., Fahrutdinova, A., Stepanov, A., Poole, L., Malinga, S., Kashcheyev, B., Oleynikov, A., and Riggan, D.: Global-scale tidal structure in the mesosphere and lower thermosphere during the PSMOS campaign of June–August 1999 and comparisons with the global-scale wave model, *J. Atmos. Sol.-Terr. Phys.*, 64, 1011 – 1035, [https://doi.org/10.1016/S1364-6826\(02\)00054-8](https://doi.org/10.1016/S1364-6826(02)00054-8), pSMOS 2000 Workshop - Planetary Scale Mesopause Observing System, 2002.
- 5 Pogoreltsev, A., Vlasov, A., Fröhlich, K., and Jacobi, C.: Planetary waves in coupling the lower and upper atmosphere, *J. Atmos. Sol.-Terr. Phys.*, 69, 2083 – 2101, <https://doi.org/10.1016/j.jastp.2007.05.014>, 2007.
- Pogoreltsev, A. I.: Generation of normal atmospheric modes by stratospheric vacillations, *Izvestiya, Atmos. Ocean. Phys.*, 43, 423–435, <https://doi.org/10.1134/S0001433807040044>, 2007.
- Pokhotelov, D., Becker, E., Stober, G., and Chau, J. L.: Seasonal variability of atmospheric tides in the mesosphere and lower thermosphere: meteor radar data and simulations, *Ann. Geophys.*, 36, 825–830, <https://doi.org/10.5194/angeo-36-825-2018>, 2018.
- Portnyagin, Y., Solovjova, T., Merzlyakov, E., Forbes, J., Palo, S., Ortland, D., Hocking, W., MacDougall, J., Thayaparan, T., Manson, A., Meek, C., Hoffmann, P., Singer, W., Mitchell, N., Pancheva, D., Igarashi, K., Murayama, Y., Jacobi, C., Kuerschner, D., Fahrutdinova, A., Korotyshekin, D., Clark, R., Taylor, M., Franke, S., Fritts, D., Tsuda, T., Nakamura, T., Gurubaran, S., Rajaram, R., Vincent, R., Kovalam, S., Batista, P., Poole, G., Malinga, S., Fraser, G., Murphy, D., Riggan, D., Aso, T., and Tsutsumi, M.: Mesosphere/lower thermosphere prevailing wind model, *Adv. Space Res.*, 34, 1755 – 1762, <https://doi.org/10.1016/j.asr.2003.04.058>, 2004.
- 15 Ribstein, B. and Achatz, U.: The interaction between gravity waves and solar tides in a linear tidal model with a 4-D ray-tracing gravity-wave parameterization, *J. Geophys. Res.: Space Phys.*, 121, 8936–8950, <https://doi.org/10.1002/2016JA022478>, 2016.
- Riese, M., Offermann, D., and Brasseur, G.: Energy released by recombination of atomic oxygen and related species at mesopause heights, *J. Geophys. Res.: Atmos.*, 99, 14 585–14 593, <https://doi.org/10.1029/94JD00356>, 1994.
- 20 Samtleben, N., Jacobi, C., Pišoft, P., Šácha, P., and Kuchař, A.: Effect of latitudinally displaced gravity wave forcing in the lower stratosphere on the polar vortex stability, *Ann. Geophys.*, 37, 507–523, <https://doi.org/10.5194/angeo-37-507-2019>, 2019.

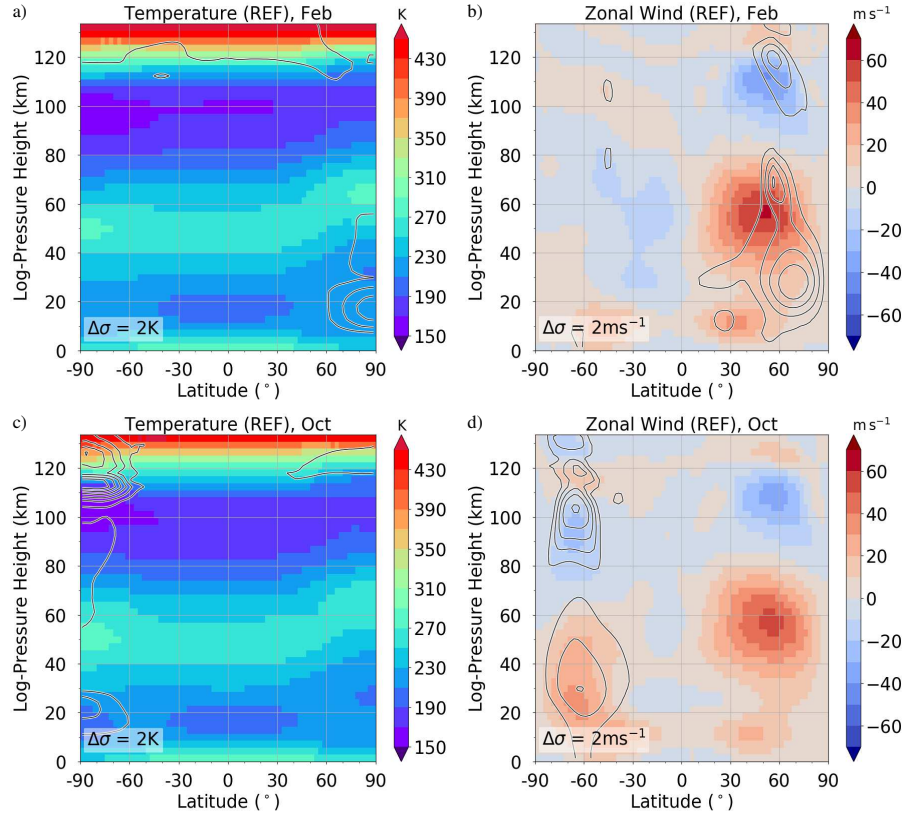
- Sivjee, G. and Walterscheid, R.: Six-hour zonally symmetric tidal oscillations of the winter mesopause over the South Pole Station, *Planet Space Sci.*, 42, 447 – 453, [https://doi.org/10.1016/0032-0633\(94\)00085-9](https://doi.org/10.1016/0032-0633(94)00085-9), 1994.
- Smith, A. K.: Global Dynamics of the MLT, *Surv Geophys.*, 33, 1177–1230, <https://doi.org/10.1007/s10712-012-9196-9>, 2012.
- 500 Smith, A. K., Pancheva, D. V., and Mitchell, N. J.: Observations and modeling of the 6-hour tide in the upper mesosphere, *J. Geophys. Res.: Atmos.*, 109, <https://doi.org/10.1029/2003JD004421>, 2004.
- Strobel, D. F.: Parameterization of the atmospheric heating rate from 15 to 120 km due to O<sub>2</sub> and O<sub>3</sub> absorption of solar radiation, *J. Geophys. Res.: Oceans*, 83, 6225–6230, <https://doi.org/10.1029/JC083iC12p06225>, 1978.
- Suvorova, E. V. and Pogoreltsev, A. I.: Modeling of nonmigrating tides in the middle atmosphere, *Geomagn. Aeron.*, 51, 105–115, <https://doi.org/10.1134/S0016793210061039>, 2011.
- 505 Swinbank, R. and Ortland, D. A.: Compilation of wind data for the Upper Atmosphere Research Satellite (UARS) Reference Atmosphere Project, *J. Geophys. Res.: Atmos.*, 108, <https://doi.org/10.1029/2002JD003135>, 2003.
- Teitelbaum, H. and Vial, F.: On tidal variability induced by nonlinear interaction with planetary waves, *J. Geophys. Res.: Space Phys.*, 96, 14 169–14 178, <https://doi.org/10.1029/91JA010192>, 1991.
- 510 Thoning, K. W., Tans, P. P., and Komhyr, W. D.: Atmospheric carbon dioxide at Mauna Loa Observatory: 2. Analysis of the NOAA GMCC data, 1974–1985, *J. Geophys. Res.: Atmos.*, 94, 8549–8565, <https://doi.org/10.1029/JD094iD06p08549>, 1989.
- Xu, J., Smith, A. K., Jiang, G., Yuan, W., and Gao, H.: Features of the seasonal variation of the semidiurnal, terdiurnal and 6-h components of ozone heating evaluated from Aura/MLS observations, *Ann. Geophys.*, 30, 259–281, <https://doi.org/10.5194/angeo-30-259-2012>, 2012.
- Yiğit, E. and Medvedev, A. S.: Internal wave coupling processes in earth’s atmosphere, *Adv. Space Res.*, 55, 983 – 1003, <https://doi.org/10.1016/j.asr.2014.11.020>, 2015.
- 515 Yiğit, E., Aylward, A. D., and Medvedev, A. S.: Parameterization of the effects of vertically propagating gravity waves for thermosphere general circulation models: Sensitivity study, *J. Geophys. Res.: Atmos.*, 113, <https://doi.org/10.1029/2008JD010135>, 2008.
- Yiğit, E., Medvedev, A. S., Aylward, A. D., Hartogh, P., and Harris, M. J.: Modeling the effects of gravity wave momentum deposition on the general circulation above the turbopause, *J. Geophys. Res.: Atmos.*, 114, <https://doi.org/10.1029/2008JD011132>, 2009.

**Table 1.** Overview on the different modell experiments

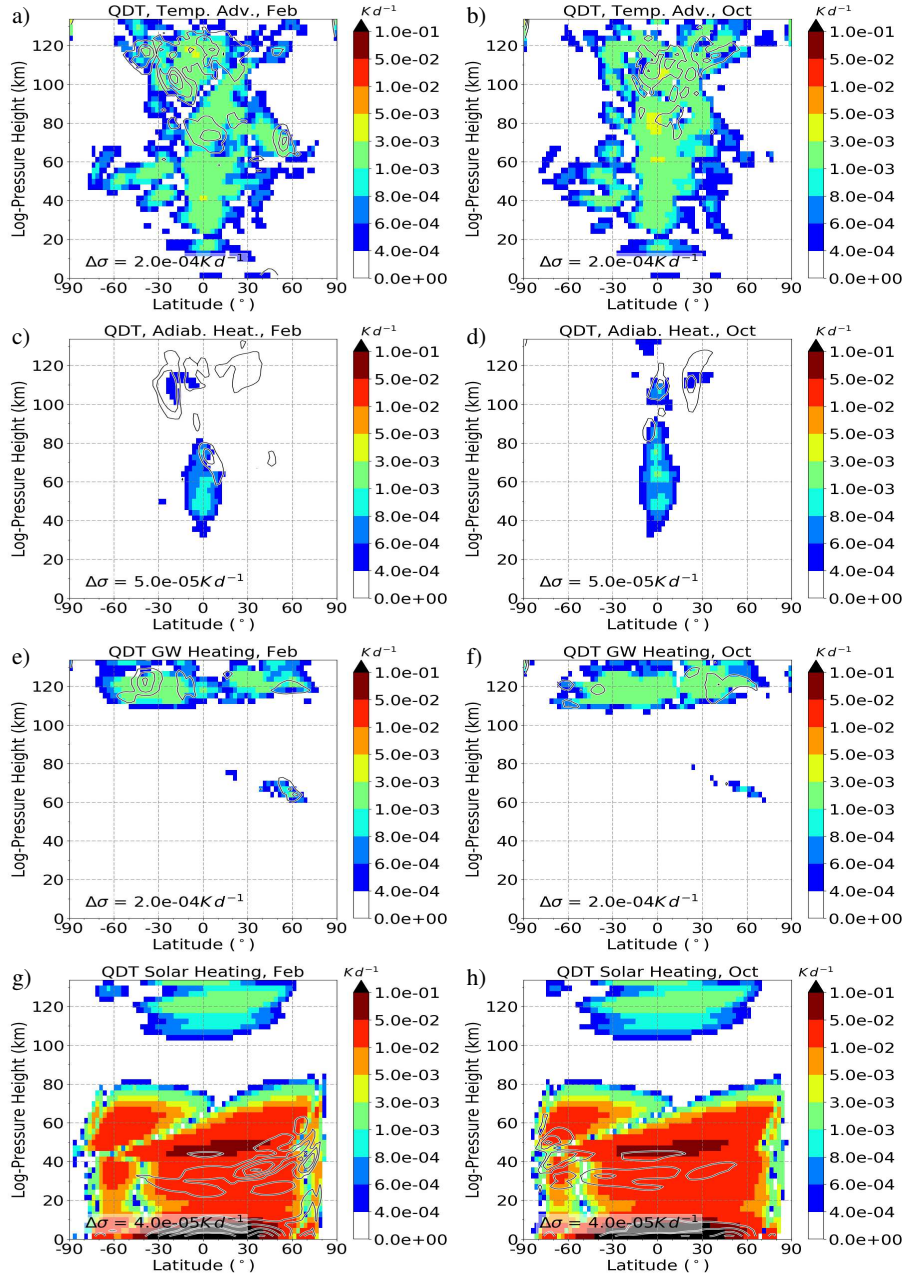
Simulation	Description	Solar forcing	Nonlinear forcing	Gravity wave forcing
<del>SOL</del> SOL	Removed nonlinear and <del>GW</del> -gravity wave forcing	on	off	off
<del>NLIN</del> NLIN	Removed solar and <del>GW</del> -gravity wave forcing	off	on	off
<del>GW</del> GW	Removed solar and nonlinear forcing	off	off	on
<del>NO_NLIN</del> NO_NLIN	Removed nonlinear forcing	on	off	on
<del>NO_GW</del> NO_GW	Removed <del>GW</del> -gravity wave forcing	on	on	off
<del>REF</del> REF	Reference with all forcings	on	on	on



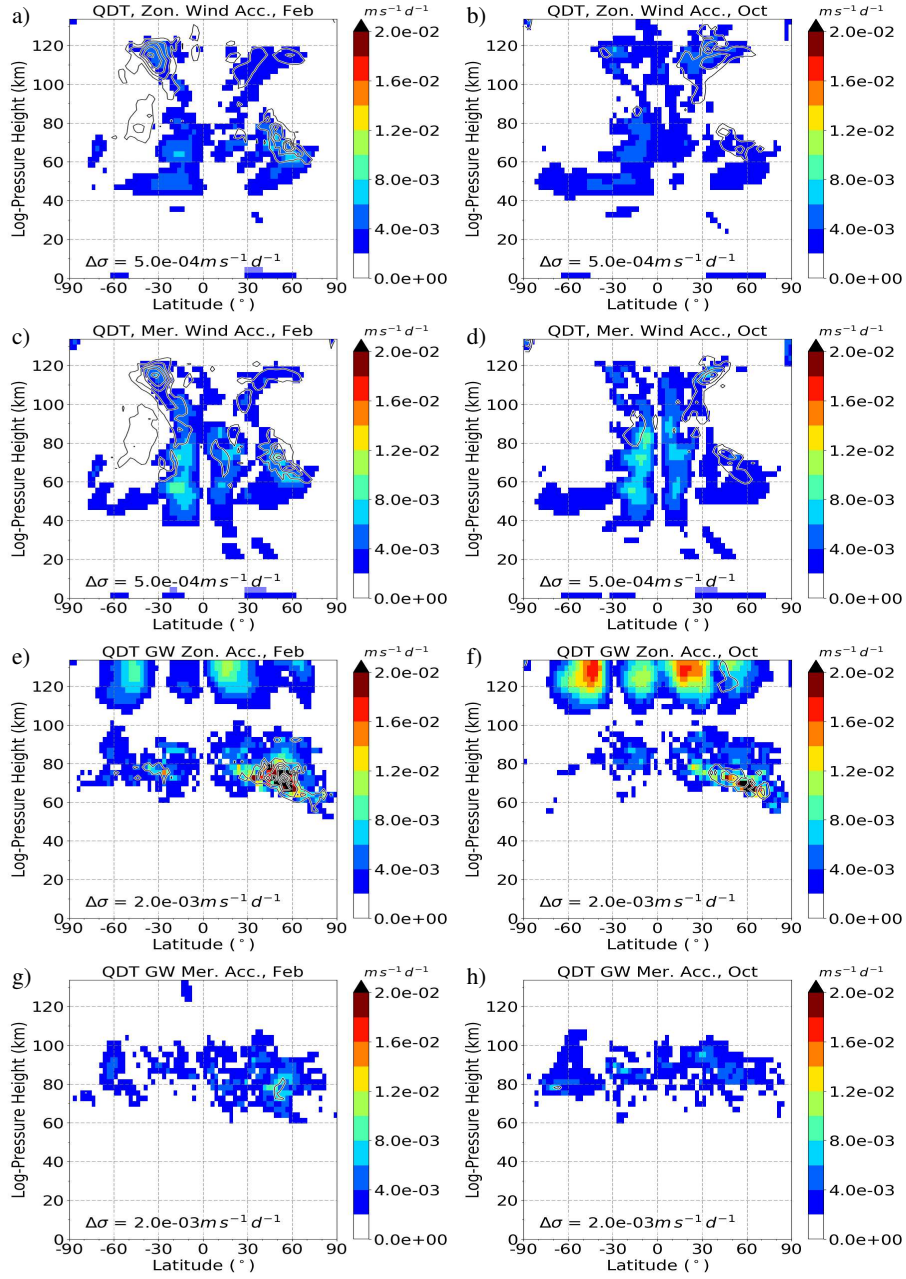
**Figure 1.** ~~REF~~ REF monthly mean QDT amplitudes at 101 km altitude. From left to right: (a) temperature, (b) zonal wind, (c) meridional wind.



**Figure 2.** (a,c) ~~REF~~ REF zonal mean temperature and (b,d) zonal wind. (a-b) February conditions. (c-d) October conditions. Results are an average of 11 ensemble members (shaded color). Standard deviations  $\sigma$  are 2 K for temperature and  $2\text{ms}^{-1}$  for zonal wind.

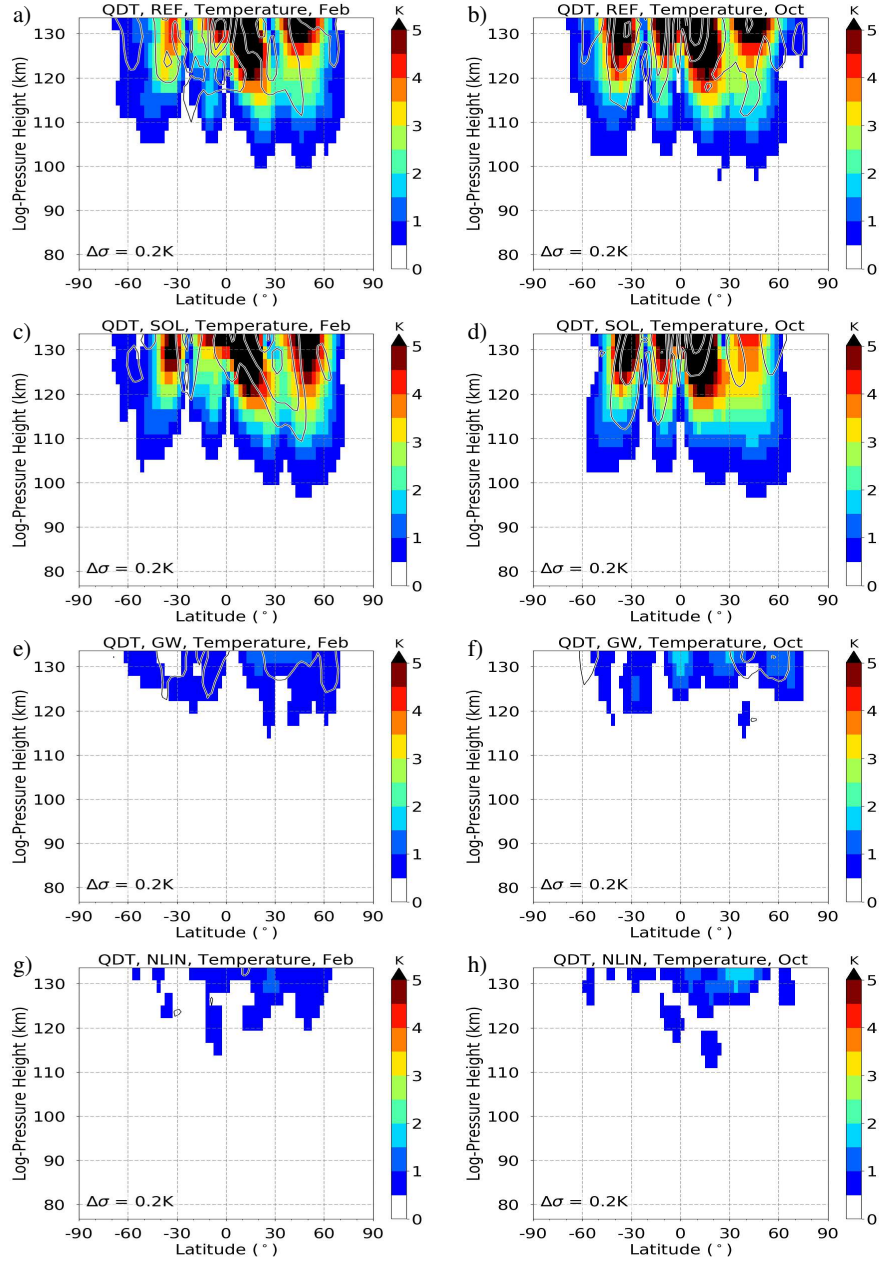


**Figure 3.** Quarterdiurnal component of thermal tendency terms in the ~~REF~~ REF simulation for February conditions (a, c, e, g) and October conditions (b, d, f, h). Amplitudes are scaled by  $\exp[-z(2H)^{-1}]$ . Results are an average of the 11 ensemble members (shaded color). Standard deviations ( $\sigma$ ) are added as grey contour lines. (a, b) Temperature advection (nonlinear component), (c, d) adiabatic heating (nonlinear component), (e, f) heating due to GW-gravity wave activity (tendency term from GW-gravity wave parameterization), and (g, h) solar heating (tendency term from solar radiation parameterization). Note that the color scales are different, and that the scale in panels (g, h) is not linear.

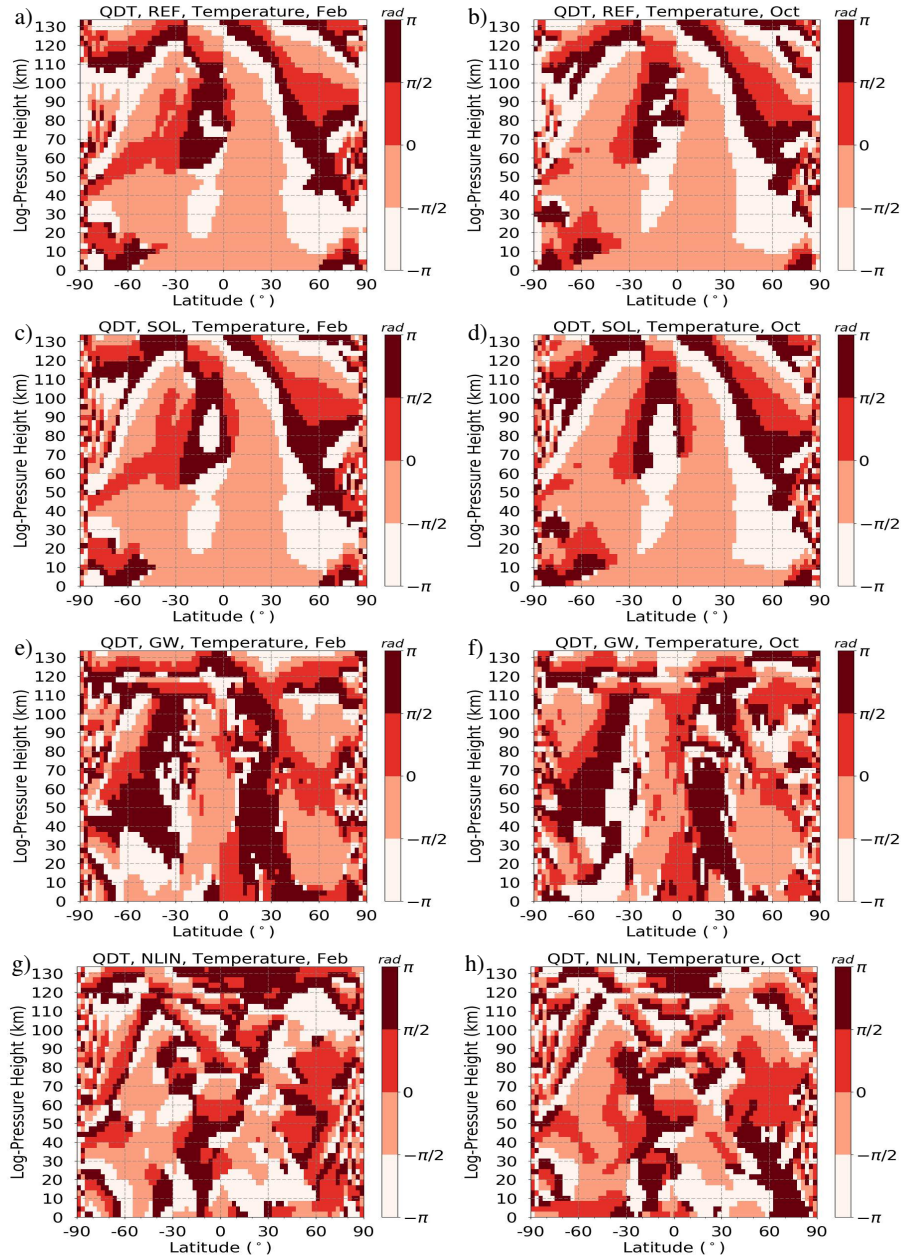


**Figure 4.** Quarterdiurnal component of zonal and meridional wind acceleration terms in the ~~REF~~ REF simulation for February conditions (a, c, e, g) and October conditions (b, d, f, h). Amplitudes are scaled by  $\exp[-z(2H)^{-1}]$ . Results are an average of the 11 ensemble members (shaded color). Standard deviations ( $\sigma$ ) are added as grey contour lines. (a, b) zonal wind advection (nonlinear component), (c, d) meridional wind advection (nonlinear component), (e, f) zonal and (g, h) meridional acceleration due to GWs-gravity waves (tendency terms from GW-gravity wave parameterization). Note that the color scales are different.

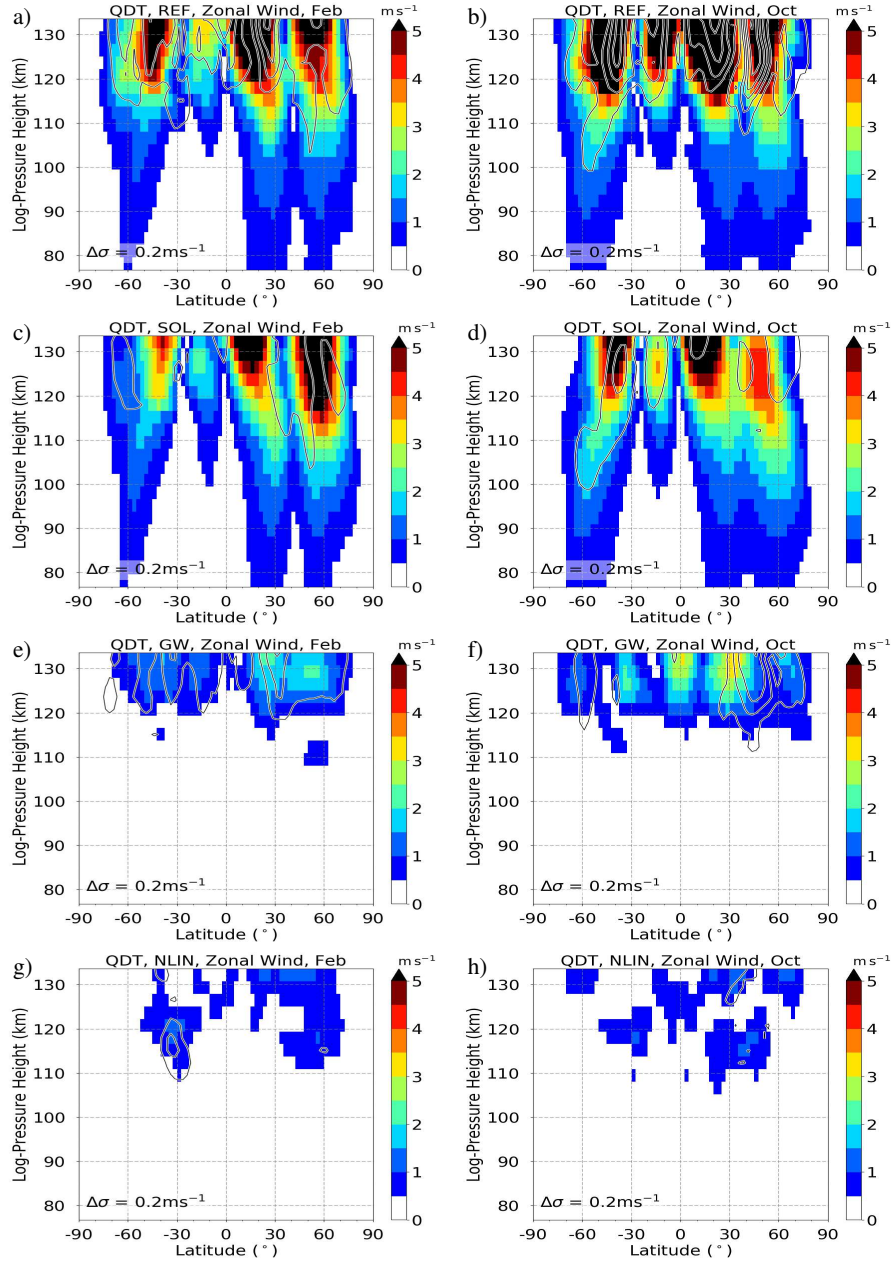




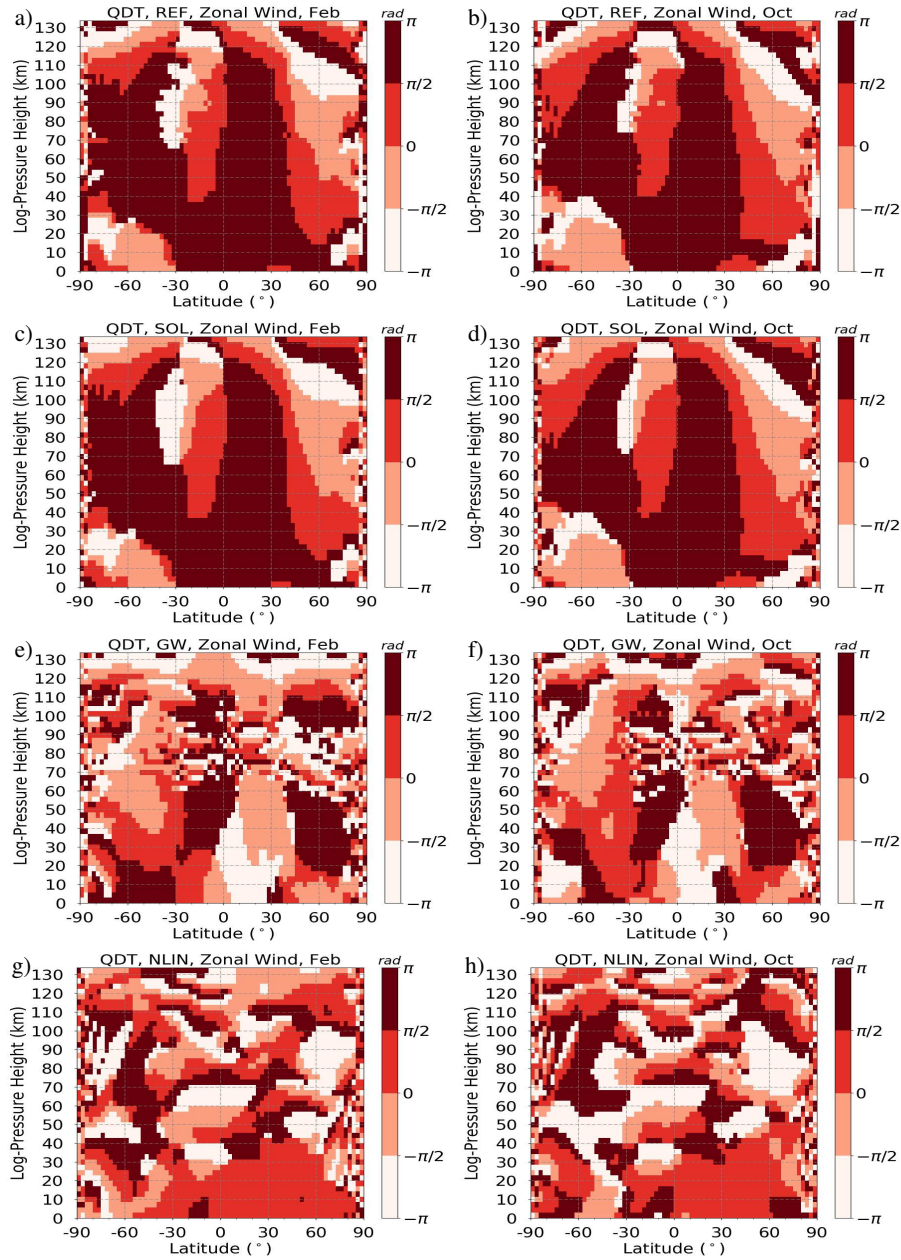
**Figure 5.** Simulations of zonal mean QDT amplitudes for temperature (colors). (a, c, e, g) February and (b, d, f, h) October conditions. (a, b) REF REF run with all forcing mechanisms enabled, (c, d) SOL SOL run with just direct solar forcing mechanism enabled, (e, f) GW GW run with just GW-gravity wave forcing mechanism enabled and (g, h) NLIN NLIN run with just nonlinear forcing mechanism enabled. Standard deviations  $\sigma$  are added as gray contour lines.



**Figure 6.** Simulations of zonal mean QDT phases for temperature (colors). (a, c, e, g) February and (b, d, f, h) October conditions. (a, b) ~~REF~~ REF run with all forcing mechanisms enabled, (c, d) ~~SOL~~ SOL run with just direct solar forcing mechanism enabled, (e, f) ~~GW~~ GW run with just GW-gravity wave forcing mechanism enabled and (g, h) ~~NLIN~~ NLIN run with just nonlinear forcing mechanism enabled. Standard deviations  $\sigma$  are added as gray contour lines.

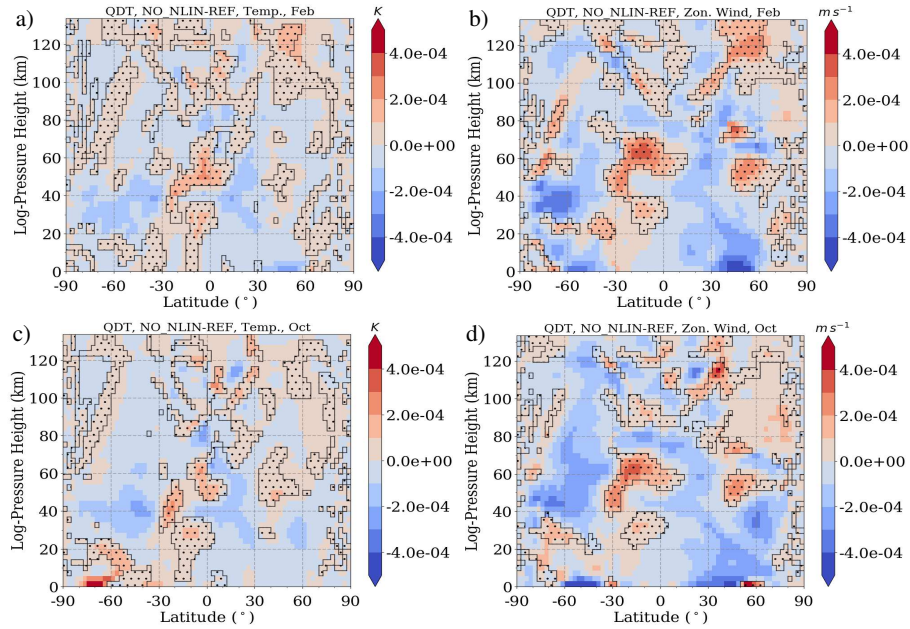


**Figure 7.** Same as Fig. 5 but for QDT zonal wind amplitudes.

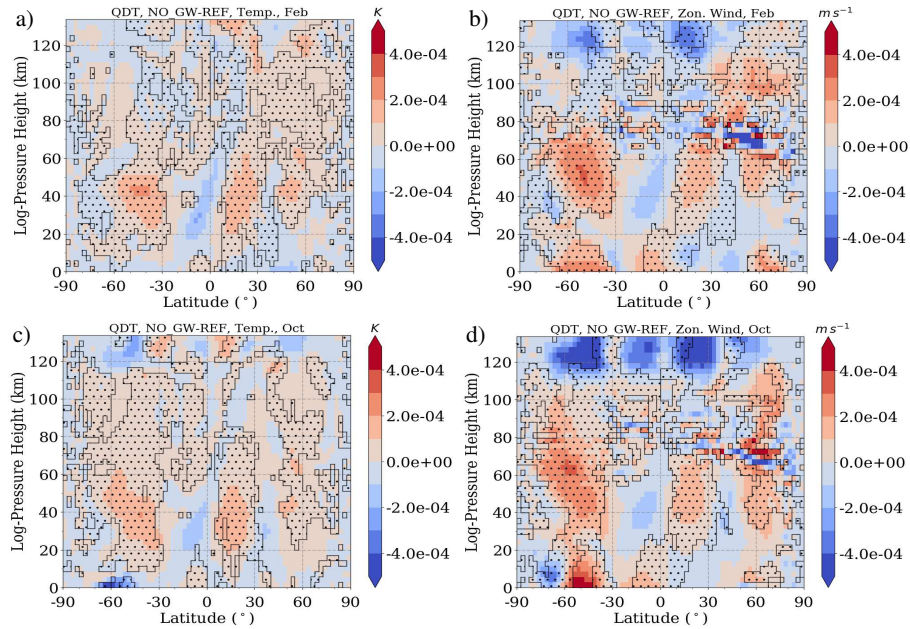


**Figure 8.** Same as Fig. 6 but for QDT zonal wind phases.





**Figure 9.** Difference of QDT amplitudes between ~~NO\_NLIN~~ NO\_NLIN and ~~REF~~ REF simulation, scaled by  $\exp[-z(2H)^{-1}]$ . Red colors denote larger ~~NO\_NLIN~~ NO\_NLIN simulation amplitudes and blue colors denote larger ~~REF~~ REF simulation amplitudes. Areas of destructive interference ( $120^\circ \leq \Delta\Phi \leq 240^\circ$ ) between ~~NLIN~~ NLIN and ~~SOL~~ SOL phases are hatched. (a, c) temperature, (b,d) zonal wind. (a, b) February conditions. (c, d) October conditions.



**Figure 10.** Difference of QDT amplitudes between NO\_GW and REF simulation, scaled by  $\exp[-z(2H)^{-1}]$ . Red colors denote larger NO\_GW simulation amplitudes and blue colors denote larger REF simulation amplitudes. Areas of destructive interference ( $120^\circ \leq \Delta\Phi \leq 240^\circ$ ) between GW and SOL phases are hatched. (a, c) temperature, (b,d) zonal wind. (a, b) February conditions. (c, d) October conditions.