

Performance of the IRI-2016 over Santa Maria, a Brazilian low-latitude station located in the central region of the South American Magnetic Anomaly (SAMA)

5 Juliano Moro^{1,2}, Jiyao Xu¹, Clezio Marcos Denardini³, Laysa Cristina Araújo Resende^{1,3}, Régia Pereira Silva³, Sony Su Chen³, Giorgio Arlan da Silva Picanço³, Liu Zhengkuan¹, Hui Li¹, Chunxiao Yan¹, Chi Wang¹, and Nelson Jorge Schuch²

¹State Key Laboratory of Space Weather – NSSC/CAS, Beijing, China

²Southern Regional Space Research Center – CRCRS/COCRE/INPE-MCTIC, Santa Maria, Brazil

³National Institute for Space Research – INPE/MCTIC, São José dos Campos, Brazil

10

Correspondence to: Juliano Moro (juliano.moro@inpe.br)

Abstract. In this work we analyse the ionograms obtained by the recent Digisonde installed in Santa Maria (29.7° S, 53.7° W, dip angle = -37°), Brazil, to calculate the monthly averages of the F₂ layer critical frequency (f_oF_2), its peak height (h_mF_2), and the E-region critical frequency (f_oE) acquired during geomagnetically quiet days from September 2017 to August 2018. The monthly averages are compared to the 2016 version of the International Reference Ionosphere (IRI) model predictions in order to study its performance close to the center of the South America Magnetic Anomaly (SAMA), which is a region particularly important for High Frequency (HF) ground-to-satellite navigation signals. The f_oF_2 estimated with the Consultative Committee International Radio (CCIR) and International Union of Radio Science (URSI) options predicts well throughout the year. Whereas, for h_mF_2 , it is recommended to use the SHU-2015 option instead of the other available options (AMTB2013 and BSE-1979). The IRI-2016 model outputs for f_oE and the observations presented very good agreements.

20

1 Introduction

The growing importance of space technologies through satellites for a large variety of applications such as science, Earth observation, meteorology, communications, security, and defence, puts forward the need to improve our ability of ionospheric modelling. For instance, the drag force on satellites in low-Earth orbit (LEO, generally defined as an orbit below an altitude of approximately 2,000 kilometer) increases when the solar activity is at its greatest over the 11-year solar cycle, which may cause uncontrolled re-entry and degrade the predictions of satellite positions (Horne et al., 2013). During space weather conditions as defined by Denardini et al. (2016), elevated flux levels of high energetic particles may precipitate in the ionosphere in regions of anomalously weak geomagnetic field strength such as the South America Magnetic Anomaly (SAMA). Besides enhancing the ionization distribution and conductivities (Moro et al., 2013, 2012), the energetic particles create high background counts which render satellite sensors unusable in this region (Schuch et al., 2019; Heirtzler, 2002).

30

Operators who control satellites in LEO may need to know with a high degree of accuracy when and where to turn satellites on and off to minimize the risk of detector saturation (Jones et al., 2017). Ionospheric modelling is also important for ground assets since it is essential to predict the ionospheric behavior for successful radio communication. Since drastic ionospheric variations can affect the performance of radio-based systems, such prediction may identify the periods, the path regions and the sections of high-frequency bands that will allow or disrupt the use of the radio transmissions (Ezquer et al., 2008).

One of the most widely used ionospheric models is the International Reference Ionosphere (IRI), which became the official International Standardization Organization (ISO) standard for the ionosphere since April 2014 (Bilitza et al., 2017). IRI is a joint project of the Committee on Space Research (COSPAR) and International Union of Space Science (URSI). It is derived from ionospheric observations collected by ground and in situ measurements such as the worldwide network of ionosondes, incoherent scatter radars, several compilations of rocket measurements, and satellite data. The model describes monthly averages of the electron density, electron and ion temperature, total electron content (TEC), and ion composition as a function of height, location, and local time. Several major milestone editions of IRI have been released by the IRI Working Group since the 1970s in order to constantly revising the model to remain it up to date and accurate as possible (Rawer et al., 1978a, 1978b, 1981; Bilitza, 1990, 2001; Bilitza and Rawer, 1996; Bilitza and Reinisch, 2008; Bilitza et al., 2014, 2017). The latest version is known as IRI-2016 and has important improvements over the 2012 and 2007 versions (IRI-2012 and IRI-2007, respectively). The most important update is the inclusion of two new model options for the F_2 layer peak height, h_mF_2 . These two options allow the users to model the h_mF_2 directly and no longer depend on the propagation factor $M(3000)F_2$ described by Bilitza et al. (1979). Besides, IRI-2016 has a better representation of topside ion densities during very low and high solar activities. The details about the IRI model are available in the following homepage: <http://irimodel.org/>.

Among several parameters, IRI can predict the F_2 layer critical frequency (f_oF_2), h_mF_2 , and the E-region critical frequency (f_oE) for a given time and location. The correct understanding of these parameters is particularly important for space technologies. The critical frequencies are two key parameters when calculating the electron densities of the ionosphere at F_2 (N_mF_2) and E-region heights. Moreover, f_oF_2 is related to the maximum usable frequency for the radio waves reflection and TEC that is significant for the phase delay of High Frequency (HF) ground-to-satellite navigation signals (Fuller-Rowell et al., 2000). On the other hand, h_mF_2 receives much of the attention since it gives the highest stratification of the upper ionosphere.

In the literature, several papers have reported many comparative studies around the globe between the ionospheric parameters measured by ionosondes and different versions of the IRI to study its performance. In South America, Ezquer et al. (2008) analysed N_mF_2 over Tucumán (26.9° S, 66.4° W, dip angle = -26°), Argentina, during the low and high solar activity years 1965 and 1970, respectively, and the moderate solar activity years 1967 and 1972. Bertoni et al. (2006) used f_oF_2 and h_mF_2 measured by two digital ionosondes installed at two Brazilian low-latitude stations in July 2003, October 2003, January 2004, and April 2004. They compared the data collected in Palmas (10.1°S, 48.2°W, dip angle = -12°) and São José dos Campos (23.2° S, 45.8° W, dip angle = -33°) with the IRI-2001 predictions. Batista and Abdu (2004) compared the

65 parameters f_oF_2 , h_mF_2 , and $B0$ measured by two digital ionosondes over São Luís (2.6° S, 44.2° W, dip angle = -4.3°, magnetic equator), and Cachoeira Paulista (22.7° S, 45° W, dip angle = -33.5°, close to the southern crest of the Equatorial Ionization Anomaly - EIA) with the IRI-2007 for high and low solar activity periods. Moro et al. (2016) tested the influence of IRI-2007 in deriving the conductivity profiles and electric fields in the Brazilian equatorial region. In Africa, Oyekola and Fagundes (2012) compared f_oF_2 , h_mF_2 and propagation factor ($M3000F_2$) recorded near dip-equator Ouagadougou, Burkina Faso (12° N, 1.8° W; dip angle = 2.9°) with IRI-2007 during low (1987) and high (1990) solar activity, and undisturbed conditions for four different seasons. In Europe, Maltseva and Poltavsky (2009) investigated several aspects of the IRI accuracy and efficiency for long term prediction of the f_oF_2 and the maximum usable frequencies (MUF) using the storm-time correction option, TEC, and the maximum observable frequency (MOF) for the year 2005. In China, Zhao et al. (2017) used h_mF_2 data derived by ionosondes at Mohe, Beijing, Wuhan and Sanya ranging from year 2007 to 2016 to assess the performance of the three options for the IRI- h_mF_2 , while Liu et al. (2019) used f_oF_2 measured over four stations in China (covering from 49.4° N to 23.2° N) from January 2008 to October 2016 to test IRI- f_oF_2 . The aforementioned studies show that the ionospheric parameters predicted by the IRI model differed from the ionosonde data at a different location. Generally, IRI overestimates the ionospheric parameters at the magnetic equator and underestimate at EIA crests.

The aim of this work is to use the critical frequencies f_oF_2 and f_oE and the height h_mF_2 measured by a recent Digisonde Portable Sounder 4D (DPS-4D) installed in Santa Maria (29° S, 54° W, dip angle = -37°), Brazil, to test the performance of the IRI-2016 in the low-latitude ionosphere situated close to the center of the SAMA. The Santa Maria Digisonde (SMK29) is supported by the Space Weather Monitoring Meridian Project of China (Wang, 2010), the Brazilian Study and Monitoring of Space Weather (Embrace) Program from the Brazilian National Institute for Space Research (INPE/MCTIC), and Federal University of Santa Maria (UFSM). Notice that there are very few ionospheric sounders operating in real-time in the low- and mid-latitudes in South America, and SMK29 fills a gap of ionospheric sounding between Cachoeira Paulista station and Port Stanley station (51.6° S, 57.9° W, dip angle = -49.8°), Argentina. Therefore, validate the IRI-2016 in a region under the influence of the SAMA is particularly important for HF communication and radio-based space systems as described before, besides contributing with IRI Working Group evaluating the goodness of the model in the low latitude Brazilian region.

2 Observed Data, Modelling, and Method of Analysis

90 The SMK29 is set to transmit radio waves continuously into the ionosphere from 1 MHz and increases the frequency up to 20 MHz with the sweep rate of 25 kHz for each round. The train of echoes to form an ionogram is transmitted/received with a 5 minutes temporal resolution. All recorded ionograms are initially auto-scaled by the Automatic Real-Time Ionogram Scaler with True Height (ARTIST). Then, the observed f_oF_2 , f_oE , and h_mF_2 parameters are deduced from manually scaled ionograms with help of the Digisonde Ionogram Data Visualization/Editing Tool (SAO-Explorer) developed by the Center for Atmospheric Research, University of Lowell Massachusetts.

Data used in this work were collected in geomagnetic quiet days ($\sum Kp \leq 24$, where $\sum Kp$ is the sum of the eight 3-h Kp indices for the day) from September 2017 to August 2018. The period is characterized by a very low level of solar and

magnetic activity. The 27-day averaged values of the $F_{10.7}$, the sunspot numbers, and the numbers of monthly quiet data used in this work are shown in Table 1. The average of the solar emission at a wavelength of 10.7 cm from September 2017 to August 2018 is only $(71.6 \pm 3.5) \times 10^{-22} \text{ Wm}^{-2} \text{ Hz}^{-1}$, and the sunspot number range from 1 to 18, characterizing the low solar activity period.

Monthly average values of the observed f_oF_2 , f_oE , and h_mF_2 parameters are calculated from the daily hourly values. The IRI-2016 predictions of f_oF_2 , f_oE , and h_mF_2 are computed for the same geophysical conditions to compare with the observational data and to evaluate the discrepancies and goodness of the model. The Relative Deviation (RD) of the predicted values concerning to the observed values for modelling the f_oF_2 using the Consultative Committee on International Radio (CCIR) coefficient (CCIR, 1967) had been computed through the Eq. (1).

$$f_oF_2 \text{ CCIR-RD} = \left(\frac{f_oF_2 \text{ CCIR} - f_oF_2 \text{ Observed}}{f_oF_2 \text{ Observed}} \right) \times 100 \%. \quad (1)$$

The term $f_oF_2 \text{ CCIR}$ stands for the monthly average of the f_oF_2 modelled by the CCIR sub-routine, while the term $f_oF_2 \text{ Observed}$ is the monthly average of f_oF_2 measured by the SMK29. Besides the comparison between the observed f_oF_2 with CCIR, the sub-routine URSI (Rush et al., 1989) is also tested and, therefore, Eq. (1) is also used considering $f_oF_2 \text{ URSI}$ instead of $f_oF_2 \text{ CCIR}$. The f_oF_2 storm model (Araujo-Pradere et al., 2002) was turned off in the IRI-2016 options since we are interested in the quiet time conditions. The RD is also evaluated for h_mF_2 and f_oE using Eq. (1). For h_mF_2 , the comparison is made using the three currently available options for determining IRI- h_mF_2 : AMTB2013 (Altadill et al., 2013), SHU-2015 (Shubin, 2015), and BSE-1979 (Bilitza et al., 1979), called AMTB, SHU and BSE, respectively, hereafter. The AMTB model is based on ionospheric data deduced from ionograms recorded by 26 Digisondes embracing latitudes from 65°N to 52°S and the longitude sector from 120°W to 170°E. The data cover different levels of solar activity from 1998 to 2006. The spherical harmonic technique was applied in AMTB to model the quiet pattern of the h_mF_2 at a global scale. The SHU model is based on the ionospheric radio-occultation data collected by CHAMP (from 2001 to 2008), GRACE (from 2007 to 2011) and COSMIC (from 2006 to 2012) satellite missions and ionospheric sounding data collected by 62 Digisondes from 1987 to 2012. SHU uses the spherical harmonics decomposition to model h_mF_2 . Finally, the older BSE uses the correlation between h_mF_2 and propagation factor $M(3000)F_2$ which in turn is defined by the ratio between the highest frequency that, refracted by the ionosphere, can be detected at a distance of 3,000 km ($M(3000)$) and f_oF_2 . At last, the f_oE comparison is made using IRI- f_oE developed by Kouris and Muggleton (1973a, 1973b) for CCIR (1973) with a modified zenith angle introduced by Rawer and Bilitza (1990) to improve the nighttime variations. Finally, to evaluate the performance of IRI-2016, a correlation analysis is performed between the modelled parameters and the observational data.

In some cases, the results are discussed considering the seasonal differences between the observed and modelled parameters. Each season is composed by three months as follow: December solstice (November, December, and January), March equinox (February, March, and April), June solstice (May, June, and July), and September equinox (August, September, and

October). The local time (LT) in Santa Maria is defined as the universal time (UT) less three hours ($LT = UT - 3 \text{ h}$). Finally, since the focus of this work is to analyse the IRI-2016 predictions, the reader can find the complete study about the variabilities of the F₂ and E layers parameters over Santa Maria during the period analysed in the recent work by Moro et al. (2019).

135 3 Results

3.1 Performance of IRI in the F₂-region parameters

The contour plots of the monthly averaged f_oF_2 (in MHz) observed and modelled by CCIR and URSI sub-routines, the RD (in percent) versus universal time (UT, vertical axis) and month (from September 2017 to August 2018, horizontal axis) are shown in Fig. 1. The f_oF_2 values are represented by the color-coded bar on the right-hand side of the upper panels and vary
140 from 1 MHz to 12 MHz. The RD in the lower panels ranges by $\pm 50 \%$.

During the whole year analysed the sunrise time varied from 9:15 UT to 10:30 UT, while the sunset took place between 20:43 UT and 23:30 UT over Santa Maria. The observed averaged f_oF_2 values depicted in Fig. 1(a) shows a diurnal variation pattern with highest values occurring at daytime hours (13:00 UT – 22:00 UT) and the lowest values occur at pre-sunrise hours (around 8:00 UT). We attribute these values to the daytime dynamics over Santa Maria, e.g., photoionization and
145 neutral atmospheric dynamics (Moro et al., 2019; Abdu and Brum 2009). The highest values measured around 11 MHz are observed between 17:00 UT and 20:00 UT from September to March evidencing the seasonal trends. The lowest values of around 1.5 MHz occur between 7:00 UT and 9:00 UT during the June solstice months. Regarding the CCIR prediction shown in Fig. 1(b) and URSI predictions in Fig. 1(c), $f_oF_2_{CCIR}$ and $f_oF_2_{URSI}$, respectively, it is observed a very similar diurnal and seasonal variation patterns as seen in the observed values. However, a first look at the $f_oF_2_{CCIR-RD}$ in Fig. 1(d) and $f_oF_2_{URSI-RD}$ in Fig. 1(e) in the bottom panels reveals that the coefficient outputs grossly underestimate/overestimate the f_oF_2 in
150 some hours and months as indicated below.

The $f_oF_2_{CCIR-RD}$ in Fig. 1(d) ranges from -20 % (underestimation) to 50 % (overestimation). The higher underestimations are observed in September and October from 9:00 UT to 16:00 UT, and later from November to February between 20:00 UT and 22:30 UT. There is also an underestimation of 20 % from April to August at around 10:00 UT. On the other hand, the
155 overestimations are most significant during nighttime hours at almost all months from 23:00 UT to 08:00 UT. The $f_oF_2_{URSI-RD}$ varies from -15 % to more than 50 %. The most negative deviations are observed only in two small portions of the contour plot in Fig. 1(e), which is around 21:00 UT in October, and from 18:00 UT to 22:00 UT in December. However, significant positive deviations higher than 50 % are seen around 9:00 UT from March to July, and in the nighttime hours around 23:00 UT from February to April. From these results, it seems that the URSI (CCIR) sub-routine overestimate (underestimate) f_oF_2
160 more than the CCIR (URSI).

A more detailed analysis has to be performed to further investigate the level of reliability of each IRI sub-routine. Since the data is not significantly drawn from a normally distributed population at the 0.05 % level, the quantitative estimate can be achieved by analysing the statistical relationship between IRI- f_oF_2 and observed values using the Spearman correlation

coefficient (r). The significance of the calculated r -value is examined with a confidence level of 95 % between the hourly
165 values modelled and observed data. The scatter plots of modelled IRI- f_oF_2 using CCIR and URSI coefficients versus the
observational data are shown in Fig. 2. The results of the calculated r are 0.97 for both IRI coefficients. It is shown an almost
perfect positive correlation.

The contour plots of the monthly averaged h_mF_2 (in km) observed by the SMK29 and modelled by AMTB, SHU, and BSE
sub-routines and the RD (in percent) versus universal time (UT, vertical axis) and month (from September 2017 to August
170 2018, horizontal axis) are shown in Fig. 3. The color-coded bar on the right-hand side of the upper panels represent h_mF_2
ranging from 180 km to 360 km. In the lower panels, the color-coded bar refers to the RD and ranges ± 50 % for the three
plots. The observed h_mF_2 values in Fig. 3(a) show that the F_2 -layer is higher during nighttime hours achieving 340 km from
September to December from 1:00 UT to around 03:00 UT. There is also **more intense** h_mF_2 values between 300 km and 320
km in September equinox and December solstice months from 12:00 UT to 18:00 UT. The daytime average values in March
175 equinox and June solstice months are usually below 240 km. The **more intense** values during nighttime in all months and in
the daytime during September equinox and December solstice months are quite well represented by the AMTB in Fig. 3(b),
SHU in Fig. 3(c), and BSE in Fig. 3(d) as well as the low values during the daytime from March equinox and June solstice
months. Although there are similarities, IRI-2016 predictions have some different aspects as shown by the h_mF_2 $AMTB-RD$ in
Fig. 3(e), h_mF_2 $SHU-RD$ in Fig. 3(f), and h_mF_2 $BSE-RD$ in Fig. 3(g). A visual comparative analysis shows that the SHU agrees
180 better with the observations since the RD encompasses, in general, ± 10 % most of the time. The same is not true for AMTB
and BSE predictions.

The h_mF_2 $AMTB-RD$ ranges from -10 % to 43 %. The main differences are related to the overestimation of h_mF_2 most of the time
in September, October, and from March to August as represented by the hottest color of the palette. It differs especially near
the sunrise period from 7:00 UT to 11:00 UT in the June equinox. The h_mF_2 $SHU-RD$ varies from -20 % to 20 %. In general, the
185 SHU outputs differ only ± 10 % from the observation results revealing very good agreement with the observations. Regarding
 h_mF_2 $BSE-RD$, it ranges from -24 % to 20 %. There are some small periods near sunrise (sunset) that h_mF_2 is overestimated
(underestimated), but in general, BSE also represents well the observations. As shown by the results presented in Fig. 3,
SHU and BSE perform better than AMTB in modelling h_mF_2 . This result is also confirmed by the statistical relationship
through the Spearman r values shown in Fig. 4. Modelling the h_mF_2 with the SHU coefficients presents the best scenario with
190 the $r = 0.86$, as shown in Fig. 4(b). Despite the AMTB in Fig. 4(a) presents the lower correlation ($r = 0.72$), it is important to
note that it is still significant.

3.2 Performance of IRI- f_oE

The contour plots of the monthly averaged f_oE (in MHz) observed by the SMK29 and modelled by IRI-2016 and the
estimated RD (in percent) versus universal time (UT, vertical axis) and month (from September 2017 to August 2018,
195 horizontal axis) are shown in Fig. 5. The f_oE values are represented by the color-coded bar on the right-hand side, ranging
from 1 MHz to 3.5 MHz for the critical frequency in the upper panels, and ± 20 % for the RD in the lower panel.

The observed f_oE in Fig. 5(a) shows a regular diurnal variation, increasing from sunrise to a peak in the afternoon to around 3.5 MHz, and falling until sunset. The low electron density at night makes it difficult to detect the E-region by the Digisonde. The most intense values around 3.5 MHz are seen during September equinox and December solstice months. The agreement
200 between IRI- f_oE and observations is very good as shown in Fig. 5(b). The maxima values seen in IRI occur longer than the observations, however. It is shifted two months (April and May) and it starts earlier (July). The f_oE_{IRI-RD} in Fig. 5(c) are positive (overestimation) up to 5 % only, confirming the good IRI-2016 performance in modelling f_oE almost all the time over Santa Maria. There are some considerable differences in a short time in the sunrise and sunset hours. These are critical periods which may be caused by distortions in the E-region traces due to horizontal gradients in the ionosphere making it
205 difficult to be modelled by IRI, as can be expected by the users. The r -value obtained between the modelled and observed values is the highest in this work, showing a very strong positive correlation, as shown in Fig. 6.

4 Discussion

The focus of this work is to use the f_oF_2 , f_oE and h_mF_2 measured by the recent Digisonde installed in Santa Maria, Brazil, to test the performance of the IRI-2016 in the low-latitude ionosphere situated close to the center of the SAMA during the
210 geomagnetically quiet days from September 2017 to August 2018. The results presented in Figs. 1 and 2 show that the f_oF_2 predictions obtained with CCIR and URSI coefficients are very similar in a month by month analysis. However, CCIR (URSI) fails underestimating (overestimating) f_oF_2 in specific nighttime hours. When the whole period of data is considered, both coefficients gave r equal to 0.97. The correlation is an indication that the model accurately predicts the diurnal and seasonal trends of f_oF_2 over Santa Maria. In general, the IRI user may choose anyone sub-routine to model f_oF_2 .
215 The results obtained in this work closely follow the earlier work of Ezquer et al. (2008), who had compared the CCIR and URSI coefficients with the ionosonde data in Tucumán. They report that, in general, both coefficients give comparable values. However, they also report disagreements among predictions and measurements reaching values of RD close to 50 %. In the Brazilian sector, Batista and Abdu (2004) in a similar comparative study pointed out that the agreements between the URSI values and the observed f_oF_2 in São Luís were always better as compared to the CCIR coefficients. They also showed
220 that the f_oF_2 after sunset is overestimated for the equatorial station of São Luís. It seems that over the Brazilian territory the right choice between CCIR and URSI in modelling f_oF_2 depends on the location of the users. In the Brazilian equatorial region, CCIR performs better, while in the SAMA region there are no appreciated differences between both. In China, Liu et al. (2019) found that the CCIR performs better than URSI during post-sunset under low solar activity or in the EIA region. For other time and outside the EIA region over China CCIR shows no large difference in performance as compared to URSI.
225 **Figs. 3 and 4 show that the SHU option for modelling the h_mF_2 performs better over Santa Maria, followed by BSE and the AMTB is the worst.** The r -value of AMTB is 0.72, the lowest observed in the present study. It is even lower than the older BSE coefficient used in the previews versions of the IRI model. Overall, the AMTB (BSE) overestimate (underestimate) the observed values. Therefore, it is recommended the usage of SHU option when modelling the h_mF_2 over Santa Maria. These results agree with the finds of Zhao et al. (2017), who also recommend the use of SHU option over China region when using

230 IRI-2016 to model h_mF_2 . Since this is the first evaluation of the three IRI- h_mF_2 options in the Brazilian sector to the author's knowledge, there is no comparison between our work with others Brazilian equatorial or low latitude regions, and it is suggested as a future study.

Finally, the comparative results presented in Figs. 5 and 6 show that the IRI-predicted f_oE values are in excellent agreement with observations in Santa Maria. The calculated r -value is 0.99. The strong correlation may be explained by the fact that the
235 E region ionization is subject to solar radiation control, and therefore IRI predicts the E region solar ionization fairly accurately everywhere in the globe since there is no plasma transport in the E region.

5 Conclusions

The present work uses the f_oF_2 , f_oE and h_mF_2 parameters acquired by a recent Digisonde installed in Santa Maria, Brazil, close to the center of the SAMA, to test the performance of the IRI-2016. Only data collected under quiet conditions from
240 September 2017 to August 2018 are used to eliminate the effects of geomagnetic disturbances. Monthly average values of the observed ionospheric parameters are calculated from the daily hourly values and compared with the IRI-2016 predictions for the same geophysical conditions. The Relative Deviation (RD) had been computed using the CCIR and URSI coefficients to estimate the IRI- f_oF_2 performance. The IRI- h_mF_2 predictions are evaluated using the RD estimated using the three options AMTB, SHU, and BSE. The IRI- f_oE performance is also tested. The main findings of the study are as follows:

- 245 a) CCIR and URSI predictions represent the diurnal and seasonal variation patterns of the observed values. f_oF_2 $CCIR-RD$ ranges from -20 % (underestimation) to 50 % (overestimation). The higher underestimations are observed in September and October from 9:00 UT to 16:00 UT, and later from November to February between 20:00 UT and 22:30 UT. There is also an underestimation of 20 % from April to August at around 10:00 UT. The overestimations are most significant during nighttime hours at almost all months from 23:00 UT to 08:00 UT. The f_oF_2 $URSI-RD$ varies
250 from -15 % to more than 50 %. The most negative deviations are observed at around 21:00 UT in October, and from 18:00 UT to 22:00 UT in December. Significant positive deviations higher than 50 % are seen around 9:00 UT from March to July, and in the nighttime hours around 23:00 UT from February to April.
- b) SHU agrees better with the observations than AMTB and BSE for modelling h_mF_2 . The h_mF_2 $AMTB-RD$ ranges from -10 % to 43 %. The main differences are related to the overestimation of h_mF_2 most of the time in September, October, and from March to August. It differs especially near the sunrise period from 7:00 UT to 11:00 UT in June equinox. The h_mF_2 $SHU-RD$ varies from -20 % to 20 % and, in general, differ only ± 10 % from the observation. results revealing very good agreement with the observations. h_mF_2 $BSE-RD$ ranges from -24 % to 20 %. There are some small periods near sunrise (sunset) that h_mF_2 is overestimated (underestimated), but in general, BSE also represents well the observations.
- 260 c) The agreement between IRI- f_oE and observations are very high. However, the maxima values seen in IRI occur longer than the observations and it is shifted two months (April and May) and it starts earlier (July). The f_oE $IRI-RD$

are positive (overestimation) up to 5 % only, confirming the good IRI-2016 performance in modelling f_oE almost all the time over Santa Maria except in a short time in the sunrise and sunset hours.

As a general conclusion of this work, it is shown that both CCIR and URSI coefficients have high accuracy in predicting f_oF_2 over Santa Maria. The same is true for IRI- f_oE . However, **it is recommended that the users use** the SHU coefficient as the first option to modelling h_mF_2 over Santa Maria, which is different from the recommendation of IRI-2016.

Author contribution

J. Moro conceived the study, processed the DPS data, designed the data analysis and leaded writing this manuscript.

J. Xu assisted to review the manuscript and discuss the results of the study.

270 C. M. De Nardin assisted to review the manuscript and discuss the results of the study.

L. C. A. Resende assisted to process the DPS data analysis and discuss the results of the study.

R. P. Silva assisted to review the manuscript and discuss the results of the study.

S. S. Chen assisted to review the manuscript and discuss the results of the study.

G. A. S. Picanço assisted to review the manuscript and discuss the results of the study.

275 L. Zhengkuan assisted to review the manuscript and discuss the results of the study.

H. Li assisted to review the manuscript and discuss the results of the study.

C. Yan assisted to review the manuscript and discuss the results of the study.

C. Wang assisted to review the manuscript and discuss the results of the study.

N. J. Schuch assisted to review the manuscript and discuss the results of the study.

280 Competing interests

The authors declare that they have no conflict of interest

Acknowledgments

J. Moro would like to acknowledge the China-Brazil Joint Laboratory for Space Weather (CBJLSW), National Space Science Center (NSSC), Chinese Academy of Sciences (CAS) for supporting his Postdoctoral fellowship, and the National Council for Scientific and Technological Development (CNPq) for the grant 429517/2018-01. C. M. Denardini thanks CNPq for the fellowship under the number 303643/2017-0. L. C. A. Resende would like to acknowledge the CBJLSW for supporting her Postdoctoral fellowship. R. P. Silva acknowledges the support from CNPq for the grant number 300329/2019-9. S. S. Chen thanks the Coordination for the Improvement of Higher Education Personnel (CAPES) for supporting his Ph.D. (grand number 88887.362982/2019-00). G. A. S. Picanço thanks CAPES (grant 88887.351778/2019-00. N. J. Schuch thanks CNPq for the fellowship under the number 300886/2016-0. The authors also thank the OMNIWEB (<https://omniweb.gsfc.nasa.gov/form/dx1.html>) for providing $F_{10.7}$ index, sunspot number, and the Kp index used in the classification of the days. The Digisonde data from Santa Maria can be downloaded upon registration at the Embrace

webpage from INPE Space Weather Program in the following link: <http://www2.inpe.br/climaespacial/portal/en/>. The authors acknowledge the support of the Federal University of Santa Maria (UFSM) Central Administration.

295 **References**

- Abdu, M. A., and Brum, C. G. M.: Electrodynamic processes in the atmosphere-ionosphere system of the low latitude region, Earth Planets Space, 61, 385-395, 2009.**
- Altadill, D., Magdaleno, S., Torta, J. M., and Blanch, E.: Global empirical models of the density peak height and of the equivalent scale height for quiet conditions, *Adv. Space Res.*, 52, 1756-1769, 2013.
- 300 Araujo-Pradere, E. A., Fuller-Rowell, T. J., and Codrescu, M. V.: Storm: an empirical storm-time ionospheric correction model – 1. Model description, *Radio Sci.*, 37 (3), 1–12, 2002.
- Batista, I. S., and Abdu, M. A.: Ionospheric variability at Brazilian low and equatorial latitudes: comparison between observation and IRI model, Adv. Space Res., 34, 1894-1900, 2004.**
- 305 Bertoni, F., Sahai, Y., Lima, W. L. C., Fagundes, P. R., Pillat, V. G., Becker-Guedes, F., and Abalde, J. R.: IRI-2001 model predictions compared with ionospheric data observed at Brazilian low latitude stations, *Ann. Geophys.*, 24, 2191-2200, 2006.
- Bilitza, D., Sheikh, N. M., and Eyfrig, R.: A global model for the height of the F2-peak using M3000 values from the CCIR numerical map. *Telecommun. J.*, 46, 549-553, 1979.
- 310 Bilitza, D.: International Reference Ionosphere: IRI-90. National Space Science Data Center, Rep. 90-22, Greenbelt, Maryland, 1990.
- Bilitza, D., and Rawer, K.: International Reference Ionosphere, in: *The Upper Atmosphere - Data Analysis and Interpretation*. Springer-Verlag, Berlin, Heidelberg, 735-772, 1996.
- Bilitza, D.: International Reference Ionosphere 2000, *Radio Sci.*, 36, (2), 261-275, 2001.
- 315 Bilitza, D., and Reinisch, B.: International Reference Ionosphere 2007: Improvements and new parameters, *Adv. Space Res.*, 42, 4, 599-609, doi:10.1016/j.asr.2007.07.048, 2008.
- Bilitza, D., Altadill, D., Zhang, Y., Mertens, C., Truhlik, V., Richards, P., McKinnell, L.-A., and Reinisch, B.: The International Reference Ionosphere 2012 - a model of international collaboration, *J. Space Weather Spac.*, 4, A07, 1-12, doi:10.1051/swsc/2014004, 2014.
- 320 Bilitza, D., Altadill, D., Truhlik, V., Shubin, V., Galkin, I., Reinisch, B., and Huang, X.: International Reference Ionosphere 2016: From ionospheric climate to real-time weather predictions, *Space Weather*, 15, 418-429, doi:10.1002/2016SW001593, 2017.
- Bilitza, D.: IRI the International Standard for the Ionosphere, *Adv. Radio Sci.*, 16, 1-11, doi:10.5194/ars-16-1-2018, 2018.
- CCIR: Consultative Committee on International Radio, Atlas of ionospheric characteristics Report 340. International telecommunication Union, Geneva, Switzerland, 1967.
- 325 CCIR Report 340: Atlas of Ionospheric Characteristics. Union Internationale des Télécommunications, Geneva, 1973.
- Denardini, C. M., Dasso, S., and Gonzalez-Esparza, J. A.: Review on space weather in Latin America. 3. Development of space weather forecasting centers, *Adv. Space Res.*, 58(10), 1960–1967, doi:10.1016/j.asr.2016.03.011, 2016.
- Ezquer, R. G., Mosert, M., Scida, L., and López, J.: Peak characteristics of F2 region over Tucumán: predictions and measurements, *J. Atmos. Sol.-Terr. Phy.* 70, 1525-1532, 2008.
- 330 Fuller-Rowell, T. J., Codrescu, M. V., and Wilkinson, P.: Quantitative modeling of the ionospheric response to geomagnetic activity. *Ann. Geophys.*, 18, 766–781, 2000.

- Heirtzler, J.: The future of the South Atlantic anomaly and implications for radiation damage in space, *J. Atmos. Sol.-Terr. Phy.*, 64, 1701–1708, doi:10.1016/S1364-6826(02)00120-7, 2002.
- 335 Horne, R. B., Glauert, S. A., Meredith, N. P., Boscher, D., Maget, V., Heynderickx, D., and Pitchford, D.: Space weather impacts on satellites and forecasting the Earth’s electron radiation belts with SPACECAST, *Space Weather*, 11, 169-186, doi:10.1002/swe.20023, 2013.
- Jones, A. D., Kanekal, S. G., Baker, D. N., Klecker, B., Looper, M. D., Mazur, J. E., and Schiller, Q.: SAMPEX observations of the South Atlantic anomaly secular drift during solar cycles 22–24, *Space Weather*, 15, 44–52, doi:10.1002/2016SW001525, 2017.
- 340 Kouris, S. S., and Muggleton, L. M.: Diurnal variation in the E-layer ionization, *J. Atmos. Sol.-Terr. Phy.*, 35, 133-139, 1973a.
- Kouris, S. S., and Muggleton, L. M.: World morphology of the Appleton E-layer seasonal anomaly, *J. Atmos. Sol.-Terr. Phy.*, 35, 141-151, 1973b.
- 345 Liu, Z., Hanxian, F., Weng, L., Wang, S., Niu, J., and Meng, X.: A comparison of ionosonde measured foF2 and IRI-2016 predictions over China, *Adv. Space Res.*, 63, 6, 1926-1936, doi:10.1016/j.asr.2019.01.017, 2019.
- Maltseva, O. A., and Poltavsky, O. S.: Evaluation of the IRI model for the European region, *Adv. Space Res.*, 43, 1638–1643, 2009.
- Moro, J., Denardini, C. M., Abdu, M. A., Correia, E., Schuch, N. J., and Makita, K.: Latitudinal dependence of cosmic noise absorption in the ionosphere over the SAMA region during the September 2008 magnetic storm, *J. Geophys. Res.*, 350 117, A06311, doi:10.1029/2011JA017405, 2012.
- Moro, J., Denardini, C. M., Abdu, M. A., Correia, E., Schuch, N. J., and Makita, K.: Correlation between the cosmic noise absorption calculated from the SARINET data and energetic particles measured by MEPED: Simultaneous observations over SAMA region, *Adv. Space Res.*, 51, 11692-1700, 2013.
- 355 Moro, J., Denardini, C. M., Resende, L. C. A., Chen, S. S., and Schuch, N. J.: Influence of uncertainties of the empirical models for inferring the E-region electric fields at the dip equator, *Earth Planets Space*, doi:10.1186/s40623-016-0479-0, 2016.
- Moro, J. M., Xu, J., Denardini, C. M., Resende, L. C. A., Silva, R. P., Liu, Z., Li, H., Yan, C., Wang, C., and Schuch, N. J.: On the sources of the ionospheric variability in the South American Magnetic Anomaly during solar minimum, *Journal of Geophysical Research: Space Physics*, doi: 10.1029/2019JA026780, 2019.
- 360 Oyekola, O. S., and Fagundes, P. R.: Equatorial F2-layer variations: comparison between F2 peak parameters at Ouagadougou with the IRI-2007 model. *Earth Planets Space* 64, 553–566, 2012.
- Rawer, K., Bilitza, D., and Ramakrishnan, S.: International Reference Ionosphere, International Union of Radio Science (URSI), Brussels, Belgium, 1978a.
- 365 Rawer, K., Bilitza, D., and Ramakrishnan, S.: Intensions and buildup of the International Reference Ionosphere, in: *Operational Modeling of the Aerospace Propagation Environment*, AGARD Conf. Proc., 238, 6.1-6.10, 1978b.
- Rawer, H., Lincoln, J. V., and Conkright, R. O.: International Reference Ionosphere – IRI 79, World Data Center for Solar-Terrestrial Physics, Report UAG-82, Boulder, Colorado, 1981.
- Rawer, K., and Bilitza, D.: International Reference Ionosphere-plasma densities: Status 1988, *Adv. Space Res.* 10(8), 5-14, 1990.
- 370 Schuch, N. J., Durão, O. S. C., da Silva, M. R., Mattiello-Francisco, F., Martins, J. B. S., Legg, A., da Silva, A., and Bürguer, E.: The NANOSATC-BR, Cubesat Development Program – a joint Cubesat Program developed by UFSM and INPE/MCTIC – Space geophysics mission payloads and first results. *Brazilian J. of Geophysics*, 37(1). doi:10.22564/rbgf.v37i1.1992, 2019.

- 375 Shubin, V. N.: Global median model of the F2-layer peak height based on ionospheric radio-occultation and ground-based Digisonde observations, *Adv. Space Res.*, 56, 916-928, 2015.
- Wang, C.: New Chains of Space Weather Monitoring Stations in China, *Space Weather*, 8, S08001, doi:10.1029/2010SW000603, 2010.
- 380 Zhao, X., Ning, B., Zhang, M. L., and Hu, L.: Comparison of the ionospheric F2 peak height between ionosonde measurements and IRI2016 predictions over China, *Adv. Space Res.*, 60, 1524-1531, doi:10.1016/j.asr.2017.06.056, 2017.

Table 1. 27-day averaged values of F10.7, sunspot number, and the number of quiet-days from September 2017 to August 2018 considered in this work.

Year	Month	$F_{10.7}$	Sunspot number	Amount of quiet days
2017	September	80.1	18	11
	October	72.1	8	18
	November	70.3	8	17
	December	69.4	9	21
2018	January	67.7	6	24
	February	70.4	12	20
	March	67.6	1	21
	April	70.3	10	24
	May	70.7	7	22
	Jun	74.5	16	23
	July	74.7	12	26
	August	71.2	1	21
			Total	248

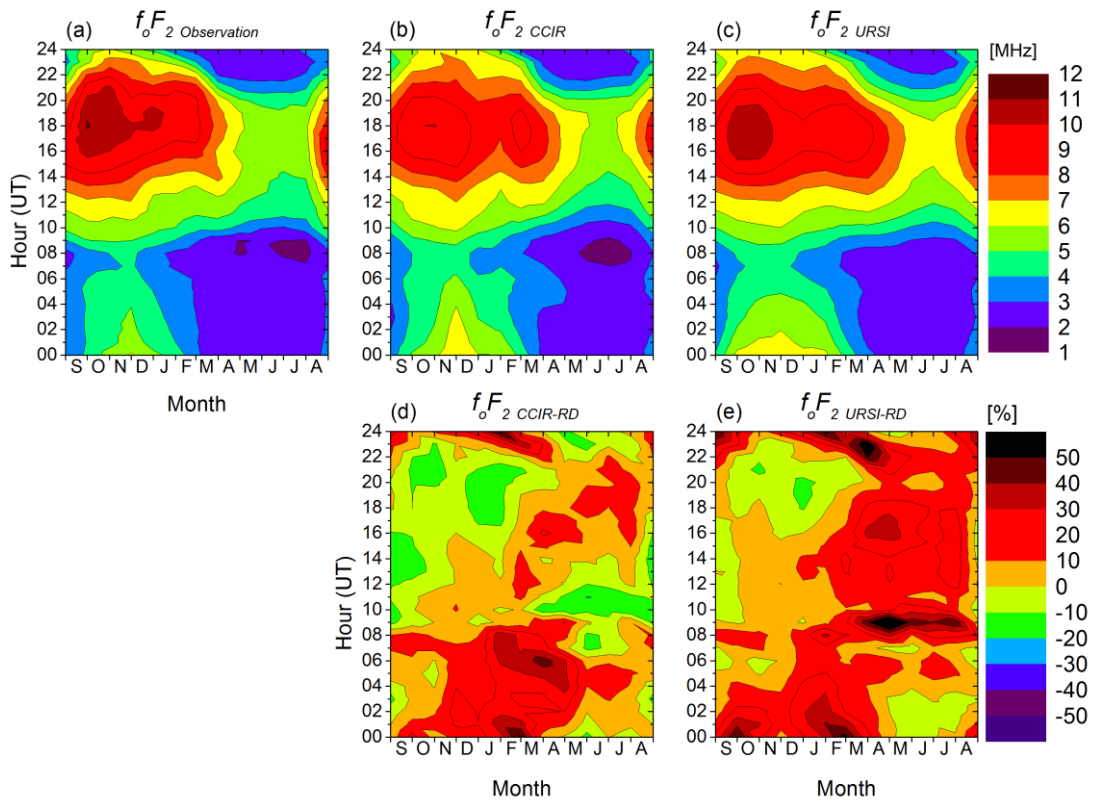
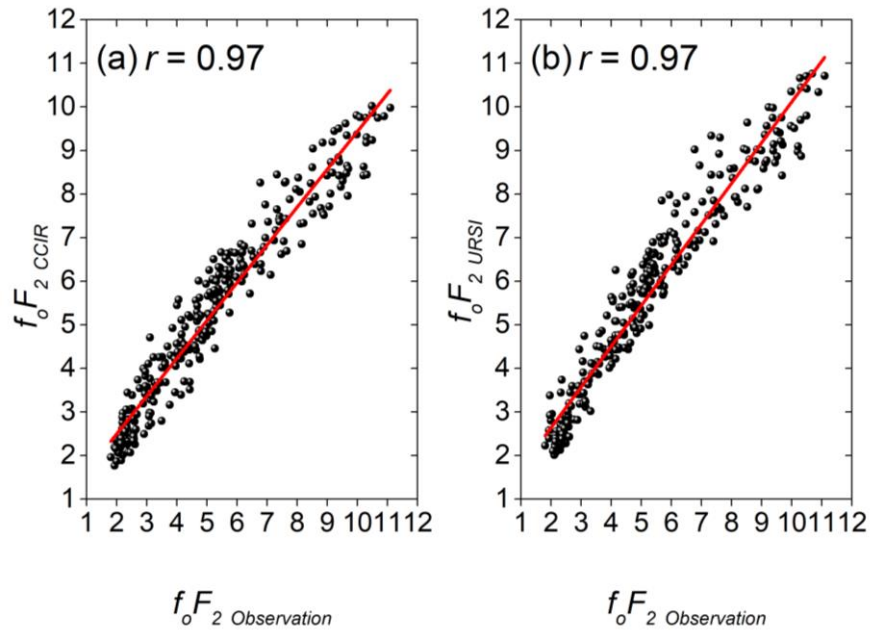
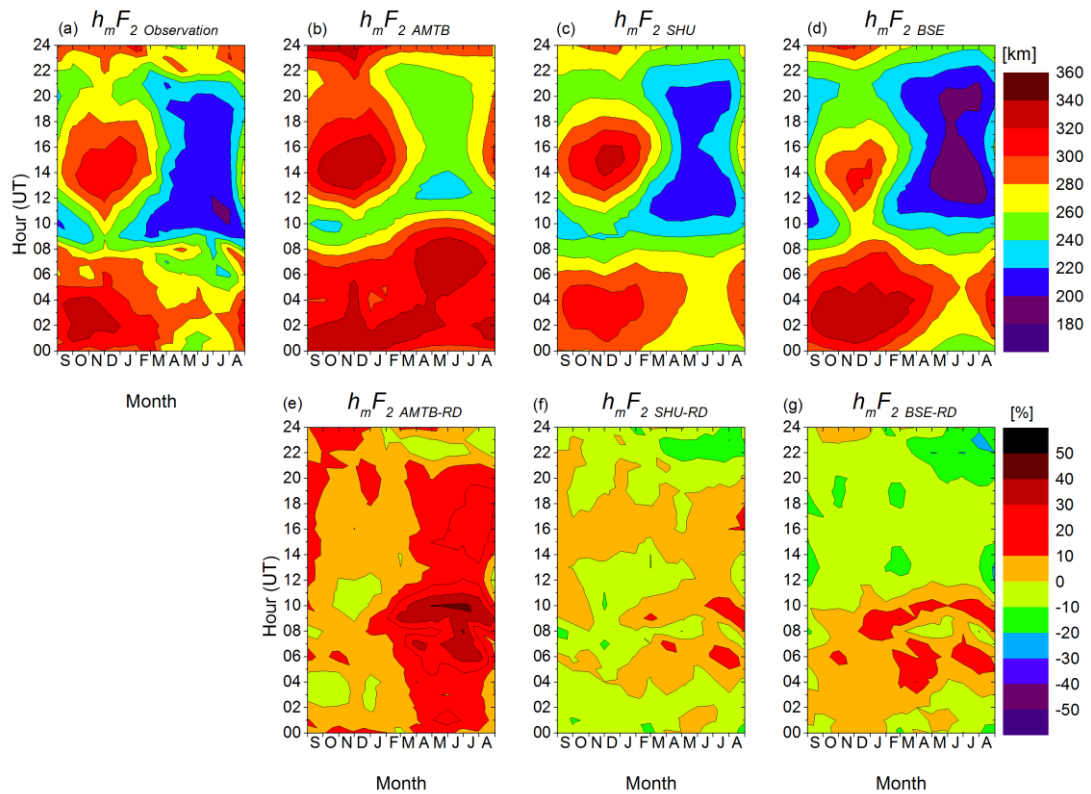


Fig.1: Contour plot of the monthly averaged f_oF_2 (a) measured by the Santa Maria Digisonde (SMK29), provided by (b) CCIR and (c) URSI coefficients. The respective Relative Deviation (RD) in percent is placed in the lower panels for (d) CCIR and (e) URSI.



390

Fig. 2: Scatter plots depicting the comparison between the (a) $f_o F_2$ CCIR and (b) $f_o F_2$ URSI versus $f_o F_2$ Observation.



395 **Fig. 3:** Contour plot of the monthly averaged $h_m F_2$ (a) measured by the Santa Maria Digisonde (SMK29), provided by (b) AMTB, (c) SHU, and (d) BSE coefficients. The respective Relative Deviation (*RD*) in percent is placed in the lower panels for (e) AMTB, (f) SHU, and (g) BSE.

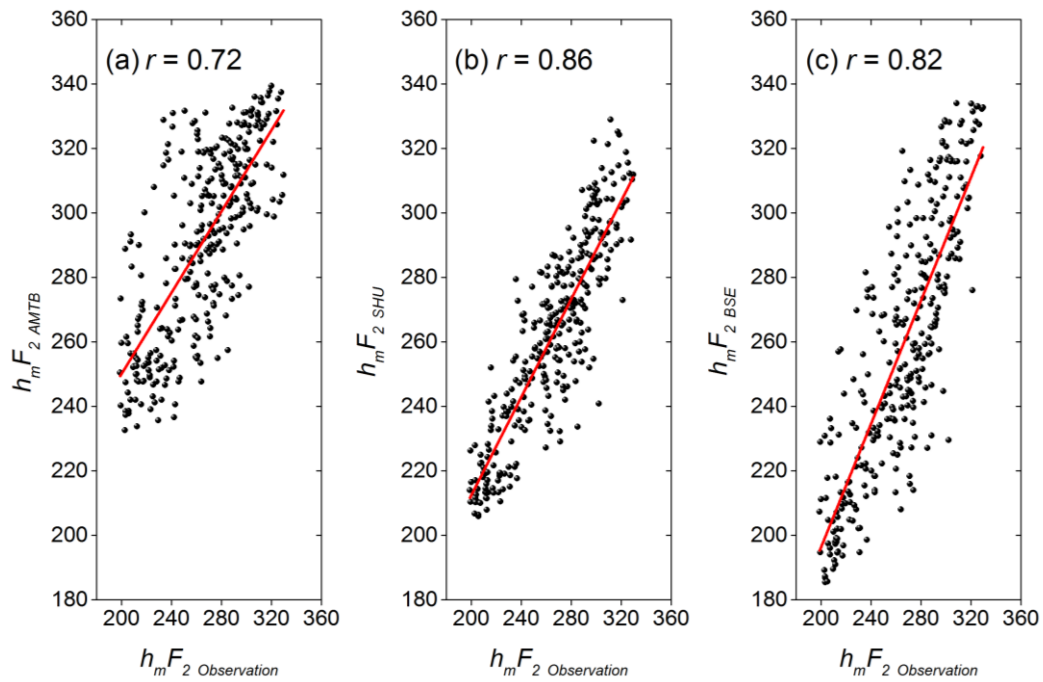


Fig. 4: Scatter plots depicting the comparison between the (a) $h_m F_2^{AMTB}$, (b) $h_m F_2^{SHU}$ and (c) $h_m F_2^{BSE}$ versus $h_m F_2^{Observation}$.

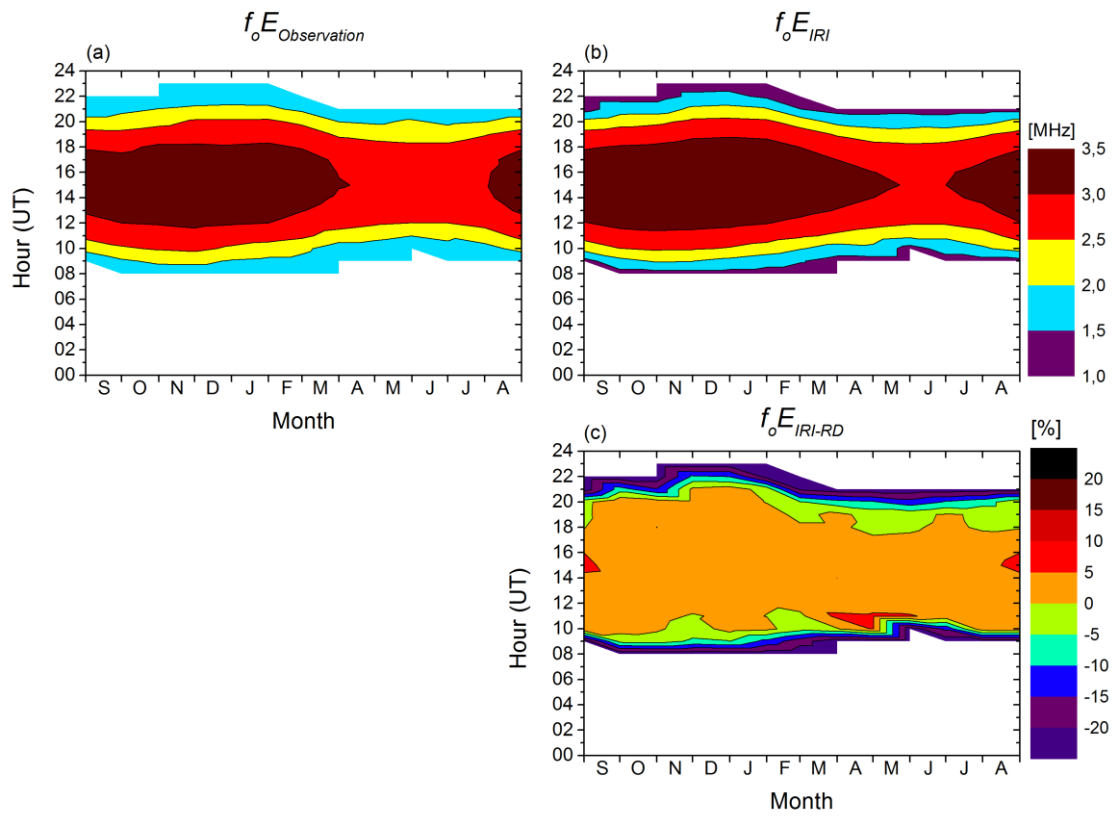
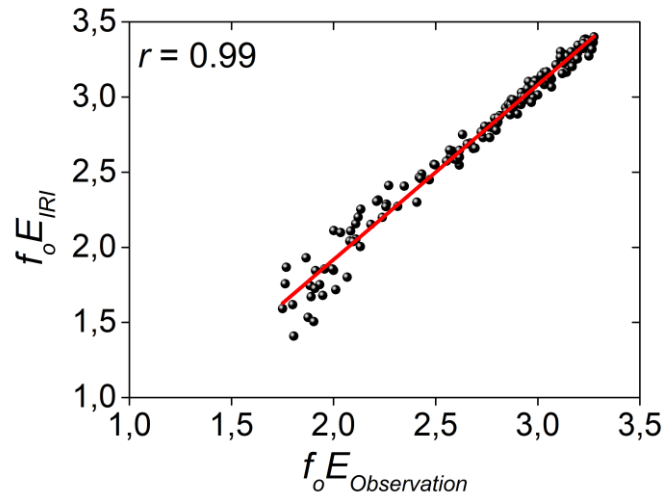


Figure 5. Contour plot of the monthly averaged f_oE (a) measured by the Santa Maria Digisonde (SMK29), provided by (b) IRI, and (c) the Relative Deviation (RD) in percent.



405

Fig. 6: Scatter plot depicting the comparison between the $f_o E_{IRI}$ versus $f_o E_{Observation}$.