

AMPERE Polar Cap Boundaries

Angeline G. Burrell¹, Gareth Chisham², Stephen E. Milan³, Liam Kilcommons⁴, Yun-Ju Chen⁵, Evan G. Thomas⁶, and Brian Anderson⁷

¹U.S. Naval Research Laboratory, 4555 Overlook Ave SW, Washington, DC, USA

²British Antarctic Survey, Cambridge, UK

³University of Leicester, University Road, Leicester, UK

⁴University of Colorado, Boulder, 2055 Regent Drive, Boulder, CO, USA

⁵University of Texas at Dallas, 800 West Campbell Road, Richardson, TX, USA

⁶Dartmouth College, 14 Engineering Drive, Hanover, NH, USA

⁷Johns Hopkins University Applied Physics Laboratory, 11100 Johns Hopkins Road, Laurel, MD, USA

Correspondence: A.G. Burrell (angeline.burrell@nrl.navy.mil)

Abstract. The high latitude atmosphere is a dynamic region with processes that respond to forcing from the Sun, magnetosphere, neutral atmosphere, and ionosphere. Historically, the dominance of magnetosphere-ionosphere interactions has motivated upper atmospheric studies to use magnetic coordinates when examining magnetosphere-ionosphere-thermosphere coupling processes. However, there are significant differences between the dominant interactions within the polar cap, auroral oval, and equatorward of the auroral oval. Organising data relative to these boundaries has been shown to improve climatological and statistical studies, but the process of doing so is complicated by the shifting nature of the auroral oval and the difficulty in measuring its poleward and equatorward boundaries.

This study presents a new set of open-closed magnetic field line boundaries (OCBs) obtained from Active Magnetosphere and Planetary Electrodynamics Response Experiment (AMPERE) magnetic perturbation data. AMPERE observations of field aligned currents (FACs) are used to determine the location of the boundary between the Region 1 (R1) and Region 2 (R2) FAC systems. This current boundary is thought to typically lie a few degrees equatorward of the OCB, making it a good candidate for obtaining OCB locations. The AMPERE R1/R2 boundaries are compared to the Defense Meteorological Satellites Program Special Sensor J (DMSP SSJ) electron energy flux boundaries to test this hypothesis and determine the best estimate of the systematic offset between the R1/R2 boundary and the OCB as a function of magnetic local time. These calibrated boundaries, as well as OCBs obtained from the Imager for Magnetopause-to-Aurora Global Exploration (IMAGE) observations, are validated using simultaneous observations of the convection reversal boundary measured by DMSP. The validation shows that the OCBs from IMAGE and AMPERE may be used together in statistical studies, providing the basis of a long-term data set that can be used to separate observations originating inside and outside of the polar cap.

Copyright statement. TEXT

1 Introduction

The high latitude atmosphere is a dynamic region with processes that respond to forcing from the Sun, magnetosphere, neutral atmosphere, and ionosphere. The dominant coupling occurs between the ionosphere, magnetosphere, and the solar wind. Interactions between the Interplanetary Magnetic Field (IMF), the magnetic field carried by the solar wind, and the terrestrial magnetosphere result in magnetic reconnection. This creates an area of open field lines (field lines that originate at Earth and connect to the IMF) known as the polar cap. The physical processes that occur here are different than those that happen at other high latitude regions where the magnetic field lines are closed (connect back to the Earth in the opposite hemisphere). In the polar cap, magnetic field lines are moved from magnetic noon to magnetic midnight by the solar wind, where they eventually reconnect with geomagnetic field lines from the opposite hemisphere. Once closed, these field lines move to lower magnetic latitudes (the auroral oval) and return towards the dayside. This process of reconnection is known as the Dungey cycle (Dungey, 1961), and (to first order) describes the motion of the magnetic field lines and the ionospheric plasma frozen into those field lines.

At ionospheric altitudes, the Open-Closed field line Boundary (OCB) separates the polar cap from the auroral oval, the highest latitude region to have closed magnetic field lines. This boundary is important because the state of the field lines (open or closed) determines the types of coupling that may occur within the magnetosphere-ionosphere-thermosphere (MIT) system. One example of a difference in MIT coupling between the polar cap and auroral oval are the field-aligned currents (FACs). The closed field lines in the auroral oval support the formation of current systems that link the ionosphere to the magnetopause and current sheet (the Region 1 or R1 FAC system) and to the partial ring current in the inner magnetosphere (the Region 2 or R2 FAC system) (Iijima and Potemra, 1976). Because the R1 FAC system connects the ionosphere to the outer magnetosphere, it lies poleward of the R2 FAC system and moves with the OCB (Coxon et al., 2018, and references therein).

Another example of MIT coupling processes affected by the OCB is the density structure of the high-latitude ionosphere. Consider the unexceptional case of southward IMF and a partially illuminated high latitude ionosphere. Under these conditions ionospheric plasma follows a convective flow driven by the Dungey cycle, characterized by straight, antisunward plasma drifts within the polar cap and longer, curved, sunward drifts when the plasma are frozen into closed magnetic field lines (the boundary between these two regions commonly referred to as the convection reversal boundary or CRB). The difference in convective motion poleward and equatorward of the CRB creates a highly structured polar ionosphere, as the dense dayside ionospheric plasma is rapidly transported to the nightside where recombination processes destroy plasma that does not return to sunlit regions quickly enough (having to follow the longer return path through the auroral oval) (e.g., Spiro et al., 1978).

Due to these and other differences in MIT coupling processes in the auroral oval and the polar cap, it is desirable to have a coordinate system that indicates in which region measurements were taken. This type of adaptive, high-latitude gridding has been performed with various data sets (Redmon et al., 2010; Chisham, 2017b; Kilcommons et al., 2017). These studies have demonstrated improved statistical and climatological results (for example, Chisham (2017b) demonstrated the difference between using magnetic and OCB oriented coordinates when studying the climatological behaviour of the plasma drift vorticity) when using adaptive, high-latitude coordinates. Unfortunately, observations of the OCB are sparse. Long-term and large-scale

studies would benefit from specifications of the OCB in both hemispheres and all magnetic local times (MLTs) every 15 min or less (Cowley and Lockwood, 1992). Models that have the ability to distinguish between regions with open and closed field lines would also benefit from adaptive, high-latitude coordinates (Zhu et al., 2019).

This study presents a new set of OCBs obtained from the Active Magnetosphere and Planetary Electrodynamics Response Experiment (AMPERE) magnetic perturbation observations. AMPERE measurements of FACs make it possible to estimate the location where Region 1 (R1) and Region 2 (R2) FAC systems meet (the R1/R2 boundary). Because the location of the Birkeland current system is tied to the expansion and contraction of the polar cap under quiescent and disturbed conditions (Coxon et al., 2018, and references therein.), it seems logical to hypothesize that a dependable relationship between the R1/R2 boundary and the OCB exists. This study investigates the relationship between the AMPERE R1/R2 boundary and the OCB inferred from particle precipitation measurements made by the Defense Meteorological Satellites Program Special Sensor J (DMSP SSJ) electron energy flux boundaries. This study has parallels with that of Clausen et al. (2013), who compared the R1 peak location (as determined from a circle fitted to the R1 peaks at all MLTs) with a range of different DMSP particle precipitation boundaries, showing a close relationship with the b5i and b5e boundaries in the nightside ionosphere. Section 2 presents the details of both data sets. Section 3 explores the relationship between the different boundaries and presents the calibration process that allows the AMPERE R1/R2 boundary to be used as a proxy for the OCB. This calibration, as well as the previous Magnetopause-to-Aurora Global Exploration (IMAGE) calibration performed by Chisham (2017b), is validated in section 4 by comparing calibrated OCBs with the CRBs from DMSP plasma drift measurements. CRBs were chosen as a validation data set because the direction of convective plasma drifts are strongly tied to the motion and state (i.e., open or closed) of the magnetic field lines. This means that the CRB is typically located at or just equatorward of the OCB (Newell et al., 2004; Drake et al., 2009), except for regions of the dayside and nightside ionosphere that map to regions of ongoing magnetic reconnection. Finally, the results of this study are summarized in section 5.

2 Instrumentation

The data sets used in this study have a long and ongoing history of observations. The primary data set, AMPERE, is described in section 2.1. Two instruments from DMSP are used, one for calibration of the boundaries and another for validation. Both DMSP data sets are described in section 2.2. The IMAGE far ultraviolet (FUV) data set used in the validation is described in section 2.3.

2.1 AMPERE

AMPERE assimilates measurements from the approximately 70 polar-orbiting spacecraft of the Iridium telecommunications constellation to deduce the high-latitude distribution of horizontal magnetic field perturbations produced by the FACs responsible for magnetosphere-ionosphere coupling (Anderson et al., 2000, 2002; Waters et al., 2001; Coxon et al., 2018). The FAC pattern in both hemispheres is calculated from 10-minute averages at a 2 min cadence on a magnetic latitude and MLT grid ($1^\circ \times 1$ h resolution); this study employs R1/R2 FAC boundaries from 2010–2012 (Milan, 2019).

The basis of the R1/R2 boundary identification is a fitting technique described by Milan et al. (2015). This technique aims to determine the centre and radius of the circle that best describes the boundary between the R1 and R2 FACs without fitting to individual MLT bins. By avoiding this common method of defining a high-latitude boundary, this R1/R2 boundary identification is more robust in the event of sparse or weak currents and less influenced by the poorly defined current structures near local
5 magnetic noon and midnight.

The following procedure is applied to each AMPERE FAC grid. In this description, positive and negative values represent upward and downward currents, respectively. The R1 currents flow upwards at dusk and downwards at dawn, while the R2 currents have the opposite polarity and lie equatorward of the R1 current system. To distinguish between these two FAC systems, the first step is to multiply all FAC magnitudes on the dawn side ($00:00 \leq \text{MLT} < 12:00$) by -1. This redefines the
10 current signs such that R1 FACs are positive and R2 FACs are negative at all MLTs. Then a center point (x_0, y_0) is assumed, where x_0 is the dawnward distance from the noon-midnight meridian and y_0 is the sunward distance from the dawn-dusk meridian. A range of centres are tested, with x_0 varying between $\pm 4^\circ$ and y_0 varying between -6° and 0° latitude. Additionally, a range of radii are tested at each centre point; varying the radius by 1° latitude (111 km) from 8° to 35° . At each radius and centre point the sum of the FACs at 200 equally-spaced points in a ring centred at (x_0, y_0) is found. This produces a profile
15 of integrated FAC magnitude with radius, in which a negative-positive bipolar signature is sought. The zero-crossing of the bipolar signature is taken to be the R1/R2 boundary and the peak-to-peak magnitude provides a figure of merit (FOM) for the boundary fit. For each AMPERE FAC grid, the circle with the best FOM is chosen and grids with low FOMs are discarded as being unreliable.

2.2 DMSP

20 The DMSP OCB locations are obtained from energetic electron fluxes measured by three DMSP spacecraft (F16-F18) that were operational and have updated ephemeris (Redmon et al., 2017) during the period of time when AMPERE R1/R2 boundaries were available. The DMSP satellites were located in sun-synchronous polar orbits at an altitude of about 830 km, with an orbital period of approximately 101 min. The geographic locations of the DMSP SSI/5 equatorward and poleward boundaries were determined using `ssj_auroral_boundary` (Kilcommons and Burrell, 2019), which implements the technique described in
25 Kilcommons et al. (2017). A clean set of OCBs were obtained by selecting the poleward boundaries with figures of merit greater than 3.0 and calculating the AACGM-v2 coordinates at each location (Shepherd, 2014; Burrell et al., 2018b).

The same DMSP spacecraft also carry an Ion Velocity Meter (IVM) that measures the three dimensional ion velocity (Heelis and Hanson, 1998). As discussed in the Introduction, the CRB is the location where plasma drifts change from moving sunward to antisunward, or vice versa, and this boundary typically lies at or just equatorward of the OCB (Newell et al., 2004; Drake
30 et al., 2009).

In this paper, CRBs obtained by Chen et al. (2015) are used to validate the AMPERE OCB locations within an hour of dawn (06:00 MLT) and dusk (18:00 MLT). Other MLTs were not considered for several reasons. Most importantly:

1. Near magnetic noon and midnight the flows tend to be mostly sunward or antisunward, meaning there is no clear reversal in the convection as a function of magnetic latitude.
 2. The IMF orientation will shift the MLT location of these sunward or antisunward flows, meaning more local times than just noon and midnight are affected.
- 5 3. Near midnight, the Harang reversal can give the appearance of multiple convection reversals at different latitudes.

The Chen et al. (2015) algorithm is optimized to identify the CRB in a two-cell convection pattern. If the plasma convection has a complex pattern with more than four reversals, or the plasma flows are weak and noisy, the program will not identify any CRB location. For symmetric, multi-cell patterns (such as those observed when the IMF is dominated by a positive B_Z component), the program will identify the most equatorward reversal boundary. Otherwise, the most poleward reversal boundary will be selected as the CRB location. The algorithm typically performs better in the summer, since the DMSP IVM performs better when the plasma density is higher (Chen et al., 2015; Chen and Heelis, 2018). These algorithmic biases mean that the CRBs cover May through August in the northern hemisphere and November through February in the southern hemisphere. However, even with the difficulties introduced by non-symmetric convection patterns all IMF clock angles are well represented in the CRB data set.

15 **2.3 IMAGE FUV**

Chisham (2017b) obtained estimates of the OCB from auroral images measured by the FUV imagers onboard the IMAGE spacecraft. Images of the northern hemisphere auroral region were available for the epoch spanning May 2000 to August 2002. During this time, the spacecraft was located in an elliptical orbit with a 90° inclination, an apogee of $7 R_E$, a perigee of 1000 km, and an orbital period of ~ 13.5 h.

20 This study uses data from the two FUV spectrographic imagers, SI12 and SI13 (Mende et al., 2000). The SI13 imager measured oxygen emissions at 135.6 nm, resulting from energetic electron precipitation. The SI12 imager measured Doppler-shifted Lyman- α emissions at 121.8 nm, resulting from proton precipitation. Both imagers provided data at a 2 min resolution, when the northern hemisphere is visible. The OCB was identified in the individual FUV images and fit across all magnetic local times using the techniques described by Longden et al. (2010) and Chisham (2017b).

25 **3 Relationship between the R1/R2 boundary and OCB**

This study follows the process outlined in Boakes et al. (2008), which determined the offset between the IMAGE FUV poleward auroral boundaries and DMSP OCBs, to obtain a correction between the AMPERE R1/R2 boundary and the DMSP SSJ OCBs. The five steps of this process are enumerated below.

1. Identify the AMPERE R1/R2 boundaries.
- 30 2. Pair AMPERE R1/R2 boundaries with DMSP SSJ OCBs.

3. Determine the typical offset at different MLTs.
4. Find a functional fit that describes the offset between the DMSP SSJ OCBs and the AMPERE R1/R2 boundaries.
5. Use the functional fit to correct the AMPERE R1/R2 boundary locations, creating an AMPERE OCB proxy.

This study uses AMPERE R1/R2 boundaries, described in Section 2.1, from January 2010 through December 2012. Using only R1/R2 boundaries with FOMs greater than 0.15 mA provides 636,250 northern and 531,666 southern hemisphere boundary locations. Pairing these boundaries to good DMSP SSJ OCB detections by requiring each observation be taken within 10 min of each other leaves 29,683 northern and 29,135 southern hemisphere boundaries. The 10 min window for pairing boundaries was chosen because of the 10 min averaging performed on the AMPERE FAC maps (see Section 2.1). However, over 90% of northern hemisphere pairs and over 80% of southern hemisphere pairs have a temporal difference of 1 min or less. Good DMSP SSJ OCB detections are defined as having a FOM of 3.0 or greater. This is consistent with the work presented by Kilcommons et al. (2017) and reduces the number of passes with dayside precipitation associated with the cusp, mantle, and other sources whose origin (inside or outside the polar cap) is still debatable. The DMSP SSJ paired OCBs for each hemisphere and satellite are shown in Figure 1 as a scatter plot, with the median location of the AMPERE R1/R2 boundaries plotted on top. Note that the R1/R2 boundaries lie near the equatorward edge of the DMSP SSJ OCBs. Because of the DMSP satellite orbits, MLTs near noon are only covered in the northern hemisphere and those near midnight are covered only in the southern hemisphere.

Ideally, observations from both hemispheres can be combined to provide complete MLT coverage of the differences between the AMPERE R1/R2 boundaries and DMSP SSJ OCBs. To test the assumption that the northern and southern boundaries have the same local time dependence, the MLT bins with observations in both hemispheres (05:00-08:00 and 15:00-20:00 MLT) were compared. The hourly boundary offsets in each hemisphere and both hemispheres combined, all calculated using the magnetic co-latitude, are presented in Table 1.

The boundary offsets in Table 1 were calculated by finding the typical difference between the DMSP SSJ OCB and the AMPERE R1/R2 boundary location in AACGM-v2 magnetic latitude in one hour MLT bins. The typical boundary latitude difference ($\Delta\phi$, which equals the DMPS SSJ OCB co-latitude minus the AMPERE R1/R2 boundary co-latitude) is represented by two values, the median of the boundary latitude differences and the peak of a Gaussian distribution (S.G. peak), fitted to a smoothed histogram (as in Boakes et al., 2008). The histograms have 1° bins, and were smoothed using a 4° running average. The smoothed histogram was then fit with a Gaussian function, allowing the S.G. peak and standard deviation to be calculated.

Comparing the median and S.G. peak of the $\Delta\phi$ for the MLT bins with observations in both hemispheres shows a mean hemispheric difference of -0.30° and 0.23° for the median and S.G. peaks, respectively. This difference is small enough to justify combining the northern and southern hemispheric $\Delta\phi$, since it is much smaller than the mean standard deviation of the MLT distributions ($\bar{\sigma} = 2.66^\circ$ for the overlapping MLT bins). The results for the combined hemispheres are presented in the rightmost columns of Table 1 and in Figure 2. There is about a 0.49° difference between the median and S.G. peak values. This difference is very small compared to the width of the $\Delta\phi$ distributions, and provides a measure of uncertainty for the resulting boundary correction.

DMSP Paired Auroral Precipitation Boundaries

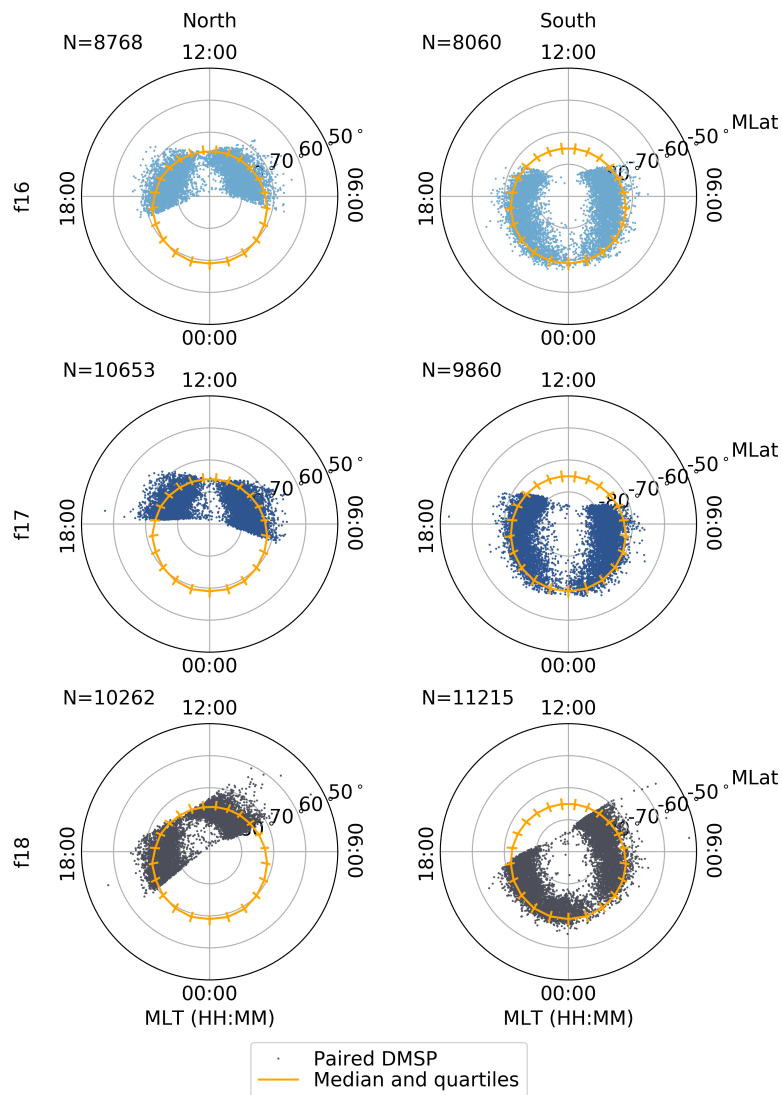


Figure 1. Paired AMPERE R1/R2 boundaries and DMSP SSJ OCBs for both hemispheres (northern in the left column and southern in the right column) and each satellite. The scattered points show the DMSP SSJ OCBs, while the gold circle shows the median location of the AMPERE R1/R2 boundaries. The scatter bars denote the quartiles of the paired AMPERE R1/R2 boundaries.

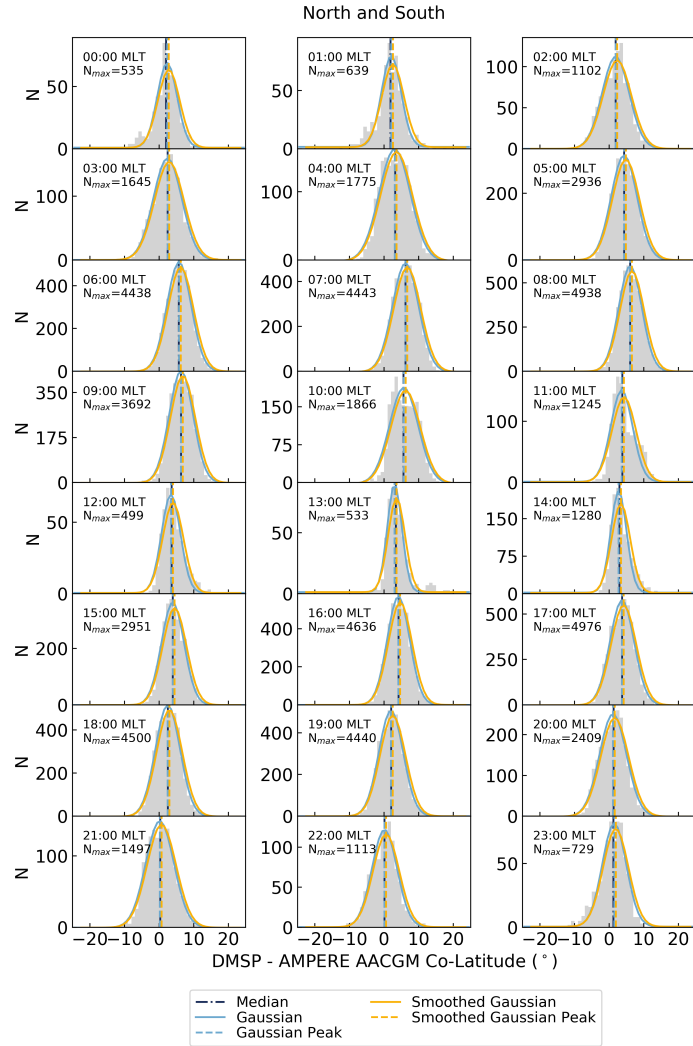


Figure 2. Hourly distributions of paired AMPERE R1/R2 boundary and DMSP SSJ OCB latitude differences, with boundary differences from both hemispheres and all satellites. The black dashed line shows the median of the distribution, the blue line shows a Gaussian fit to the distribution, and the gold line shows the Gaussian fit to the smoothed histogram. The vertical blue and gold lines show the peaks of each Gaussian fit.

Table 1. Hourly boundary offset for hours with over 100 boundary pairs and successfully fit Gaussians

MLT	North		South		Both	
	Median (°)	S.G. Peak (°)	Median (°)	S.G. Peak (°)	Median (°)	S.G. Peak (°)
00:00	-	-	2.04	2.83	2.04	2.83
01:00	-	-	1.88	2.56	1.88	2.56
02:00	-	-	1.93	2.36	1.93	2.36
03:00	-	-	2.46	2.94	2.46	2.94
04:00	-	-	3.20	3.60	3.20	3.60
05:00	3.96	4.45	4.80	5.29	4.33	4.86
06:00	5.16	5.69	6.34	-	5.73	6.26
07:00	5.29	5.88	6.98	-	6.21	6.71
08:00	5.69	6.19	7.10	-	6.08	6.64
09:00	5.38	5.99	-	-	6.35	6.88
10:00	4.64	5.29	-	-	5.64	6.23
11:00	3.78	4.27	-	-	3.82	4.32
12:00	3.57	3.99	-	-	3.66	4.04
13:00	3.30	3.61	-	-	3.40	3.62
14:00	2.95	3.36	-	-	3.02	3.43
15:00	3.49	3.97	5.21	5.76	3.97	4.50
16:00	4.20	4.68	4.19	4.66	4.19	4.67
17:00	4.00	4.47	3.32	3.74	3.77	4.22
18:00	2.82	3.30	2.27	2.77	2.54	3.01
19:00	2.67	3.12	1.52	1.95	2.07	2.51
20:00	2.42	3.13	0.96	1.35	1.29	1.63
21:00	-	-	0.33	0.73	0.33	0.73
22:00	-	-	0.14	0.60	0.14	0.60
23:00	-	-	1.24	1.94	1.24	1.94

Table 2. Boundary fit constants for DMSP-AMPERE boundary offset

Constant	Median	S.G. Peak
a	4.01°	4.41°
e	0.55	0.51
τ	-0.92	-0.95

Unfortunately, the differences between the boundary fitting methodology used by Chisham (2017b) and Milan et al. (2015) mean that it is not reasonable to use a harmonic function to describe the offset between the DMSP SSJ OCBs and the AMPERE R1/R2 boundaries, as done in prior auroral boundary fitting studies (Holzworth and Meng, 1975; Carbary et al., 2003; Boakes et al., 2008). Because the R1/R2 boundary fitting method used by Milan et al. (2015) does not fit a series of MLT bins, the boundary correction cannot be applied prior to circle fitting and will determine the final shape of the OCB proxy. Thus, this study uses a generalised ellipse (equation 1) rather than a harmonic function to avoid overfitting the MLT dependence of the offset between the DMSP SSJ OCBs and the AMPERE R1/R2 boundaries.

$$K(\lambda) = \frac{a(1 - e^2)}{1 + e \cos(\lambda - \tau)} \quad (1)$$

In equation 1, λ is the MLT in radians, a is the semi-major axis in degrees, e is the eccentricity (a unitless quantity), and τ is the angular offset of the ellipse's centre in radians. These four constants allow the ellipse to adjust its centre and axes. They are fit using the Python SciPy least squares fitting routine, *leastsq* (Jones et al., 2001), which wraps the MINPACK *lmdif* and *lmder* algorithms (More et al., 1984). The least squares fitting routine minimises the difference between K and $\Delta\phi$, weighted by the inverse of the error, ϵ . The error is defined as shown in equation 2, where N_{MLT} is the number of $\Delta\phi$ observations in each MLT bin, N_{max} is the maximum N_{MLT} , and σ is either the interquartile range or the standard deviation depending on whether the median or S.G. peak was used as the central value. The results of this fitting procedure are shown in Figure 3 and Table 2.

$$\epsilon = \sqrt{\left(\frac{N_{MLT}}{N_{max}}\right)^2 + \sigma^2} \quad (2)$$

As shown in Figure 3, the AMPERE R1/R2 boundary lies about 2° equatorward of the OCB at magnetic midnight, about 4° equatorward of the OCB at magnetic noon, and further out at dawn and dusk. The elliptical fit follows the central values very closely between 00:00 and 10:00 MLT, and smooths through the maxima and minima at 12:00, 16:00, and 22:00 MLT. Even where the differences are greatest, though, the elliptical fit does not differ from the central value by more than $\frac{\epsilon}{2}$. This behaviour is consistent whether the median or S.G. peak is used in the fitting process. The similarity between the two fits can be quantified by comparing the differences between a_{Median} and $a_{S.G. Peak}$ (0.40°) and the typical difference between the hourly median and S.G. peak values (0.49°); the differences between the eccentricity and angular offset are even less significant..

The consistency of the elliptical fit for both central values, as well as its success at capturing the major features of $\Delta\phi$ given the functional constraints, make it a good candidate for correcting the R1/R2 boundary to provide an OCB estimate. The Gaussian nature of the hourly bins (shown in Figure 2) suggests that differences between the R1/R2 boundary and DMSP SSJ OCB are randomly distributed, confirming the conclusion that it is appropriate to use K to correct the R1/R2 boundary to obtain an AMPERE OCB estimate.

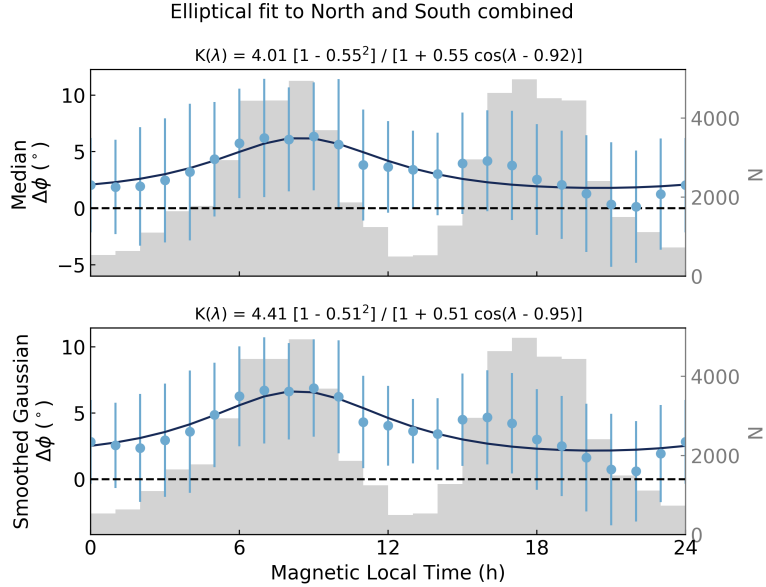


Figure 3. Elliptical boundary correction (black line) fit to the median (top) and S.G. peak (bottom) $\Delta\phi$ for both hemispheres. The blue dots and scatter bars show the central value and ϵ in each MLT bin. The grey histogram shows N_{MLT} , and scales to the y-axis on the right.

4 Validation

The appropriateness of using K to transform the AMPERE R1/R2 boundary into an AMPERE OCB is tested by comparing the AMPERE OCBs to the DMSP CRBs within an hour of dawn and dusk. These local times were chosen due to the MLT-dependent variations in the CRB-OCB relationship discussed in Section 2.2. Recall, as well, that no specific selection was made for IMF conditions. All IMF clock angles and magnitudes are considered together, as the AMPERE OCBs should be valid at all IMF conditions when the OCB can be represented (to first order) by an ellipse. To ensure that the performance of the AMPERE OCBs are on par with previous OCB calculations, this validation is also performed for the IMAGE OCBs. Unfortunately, it is impossible to directly compare the AMPERE and IMAGE OCBs because there is no temporal overlap between the two data sets. This validation effort paired OCBs with DMSP CRBs that were identified within 10 min of one another. The location of the DMSP CRB relative to the OCB was then determined. In this adaptive coordinate system, the OCB is set at a co-latitude of 74° (a latitude chosen to represent the OCB in adaptive, high-latitude coordinates based on the typical size of the polar cap). CRBs that occur poleward or equatorward of the OCB will have co-latitudes greater than or less than 74° , respectively. This adaptive gridding was performed using the Python package, *ocbpy* (Burrell and Chisham, 2018; Burrell et al., 2018a).

Figure 4 shows the distribution of CRB observations for the different DMSP satellites, OCB sources, and hemispheres. As was done with the DMSP SSJ observations, two years of CRBs and OCBs were paired in time after removing unreliable boundaries (as discussed in section 2). Note that that the paired data both from the two IMAGE instruments and from AMPERE

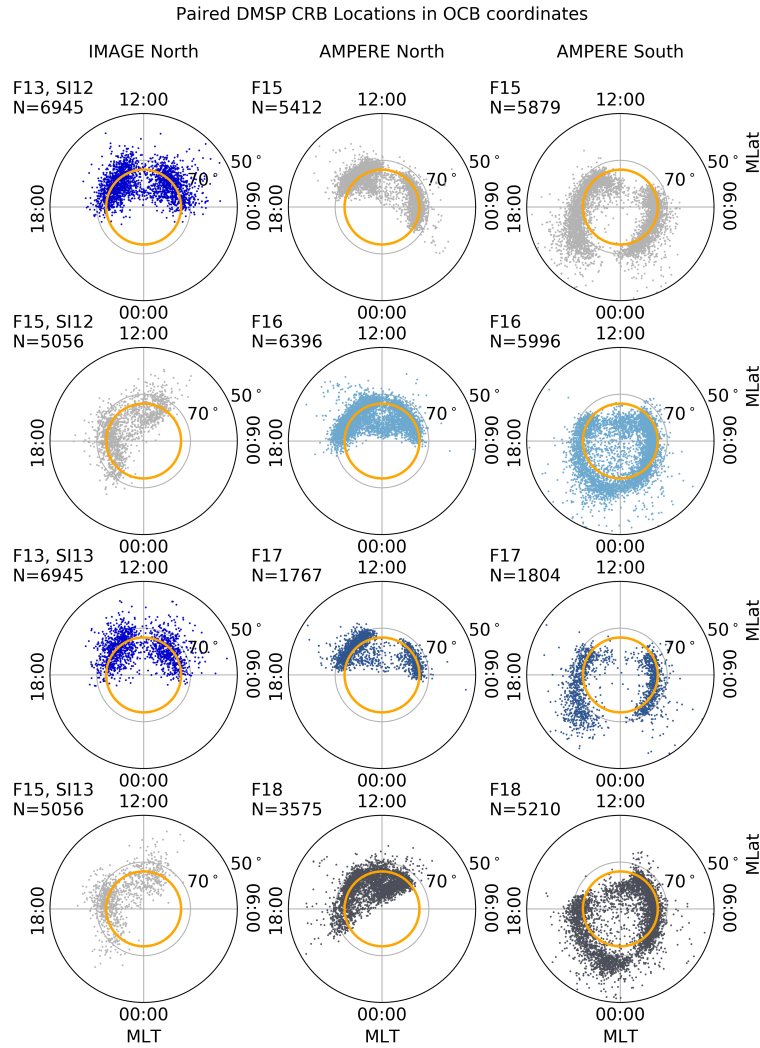


Figure 4. Paired IMAGE and AMPERE OCBs with DMSP CRBs for the available hemispheres and each satellite. The IMAGE data show the SI-12 and SI-13 observations for the northern hemisphere (left column), while the median elliptical correction was applied to obtain the AMPERE OCBs shown in the middle and right columns (which show the northern and southern hemispheres, respectively). The scattered points show the DMSP IVM CRBs, while the gold circle shows the IMAGE or AMPERE OCB. To simplify the comparison, the DMSP IVM CRB locations are plotted in adjusted polar coordinates (Burrell and Chisham, 2018). Although all CRBs paired with IMAGE or AMPERE OCBs are shown here, only CRBs within 1 h of 06:00 or 18:00 MLT were used in this validation.

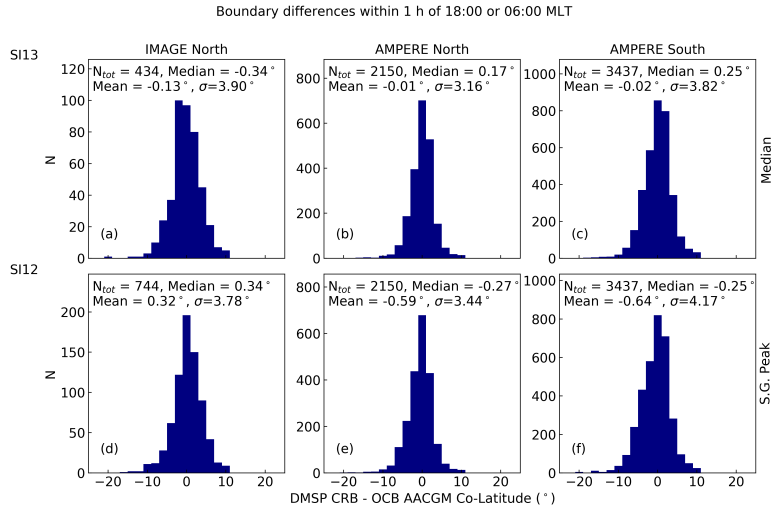


Figure 5. Histograms showing the differences between DMSP CRB and IMAGE or AMPERE OCB using paired boundaries that occur within 1 hr of 06:00 MLT or 18:00 MLT.

(in both hemispheres) show a similar spread of CRBs at different magnetic local times, with larger spreads near magnetic noon and midnight.

Figure 5 shows the histograms of the latitude differences between the DMSP CRBs and the IMAGE (panel a and d) or AMPERE (panels b, c, e, and f) OCBs. This figure shows the results for the median ellipse correction to obtain the AMPERE OCB in the top row and the S.G. peak ellipse correction in the bottom row. For the IMAGE histograms, panel (a) shows the results for the SI13 instrument and panel (d) shows the results for the SI12 instrument. In all cases the means and medians of the difference distributions behave similarly: most points lie within 1° of each other and the standard deviation of the distributions is below 5° in all places. Additionally, the CRB is approximately collocated with both the AMPERE and IMAGE OCBs. This close agreement with the DMSP CRB and the similar behaviour of the IMAGE and AMPERE OCBs validates the AMPERE OCBs provided here.

5 Conclusions

This study modified traditional auroral boundary fitting methods to establish an MLT dependent relationship between the OCB and the R1/R2 boundary. This was performed by determining the first moment of the distribution of differences between the R1/R2 boundary and the OCB (as measured by the DMSP SSJ instrument) for 1 hr MLT bins. These moments (which included the median of the distribution and the peak of a smoothed Gaussian fit) were then used to define the parameters of an elliptical function. This function specifies the distance between the OCB and R1/R2 boundary as a function of MLT.

The validity of this OCB, as well as previously determined IMAGE OCBs, were tested against the dawn and dusk measurements of the CRB (as measured by several DMSP IVM instruments). These boundaries were found to typically differ by less than a degree.

As mentioned in the introduction, modeling and statistical studies in polar regions should avoid mixing measurements taken in the auroral oval and the polar cap. In combination, the AMPERE and IMAGE OCBs form the basis of a multi-solar cycle data set that could be used to improve high latitude statistical studies and climatological models. The data sets and software tools presented in this paper allow researchers to begin using adaptive, high latitude coordinates in their investigations.

Code and data availability. AMPERE data are available from the John Hopkins University Applied Physics Laboratory at <http://ampere.jhuapl.edu/>. We thank the AMPERE team and the AMPERE Science Center for providing the Iridium-derived data products. AMPERE boundaries are described in Milan et al. (2015) and can be accessed at Milan (2019) or through *ocbpy* (Burrell and Chisham, 2018).

The IMAGE FUV data are provided courtesy of the instrument PI Stephen Mende (University of California, Berkeley). We thank the PI, the IMAGE mission, and the IMAGE FUV team for data usage and processing tools. The raw IMAGE data, and software, are available from <http://sprg.ssl.berkeley.edu/image/>. The auroral boundary data set, and the methodology used to create it, can be found at <https://www.bas.ac.uk/project/image-auroral-boundary-data/> or Chisham (2017a).

DMSP data are available at <https://cedar.openmadrigal.org> and <https://cdaweb.gsfc.nasa.gov>. DMSP SSJ boundaries may be obtained using the software available https://github.com/lkilcommons/ssj_auroral_boundary. DMSP CRBs can be requested from Yun-Ju Chen (yxc126130@utdallas.edu).

The software that was used to perform adaptive, high-latitude gridding can be found at <https://github.com/aburrell/ocbpy> or Burrell and Chisham (2018).

Author contributions. AGB developed the concept, performed the data analysis, and wrote the manuscript. GC supported the conceptual development, provided feedback on the data analysis, and edited the manuscript. SEM provided the AMPERE R1/R2 boundaries and guidelines for their use, provided feedback on the conceptual development, and contributed to writing the manuscript. LK provided guidelines for the use of the DMSP SSJ boundaries, feedback on the validation, and edited the manuscript. Y-JC provided the DMSP CRBs, provided guidelines for their use in validation, and edited the manuscript. EGT provided feedback on the data validation efforts and edited the manuscript. BA is the PI of AMPERE.

Competing interests. No competing interests are present.

Acknowledgements. AGB is supported by the United States Chief of Naval Research (US CNR). GC is supported by United Kingdom Research and Innovation (UKRI) as part of the British Antarctic Survey Polar Science for Planet Earth Programme. LK is supported by AFOSR Award No: FA9550-17-1-0258. YJC is supported by AFOSR MURI grant FA9559-16-1-0364 to University of Texas at Dallas. EGT

is supported by NSF grant OPP-1836426. The authors would like to thank Dr. J. P. Reistad for communications about the Discussion Paper version of this manuscript that lead to important improvements.

References

- Anderson, B. J., Takahashi, K., and Toth, B. A.: Sensing global Birkeland currents with Iridium engineering magnetometer data, *Geophysical Research Letters*, 27, 4045–4048, 2000.
- Anderson, B. J., Takahashi, K., Kamei, T., Waters, C. L., and Toth, B. A.: Birkeland current system key parameters derived from Iridium
5 observations: Method and initial validation results, *Journal of Geophysical Research*, 107, 1079, <https://doi.org/10.1029/2001JA000080>, 2002.
- Boakes, P. D., Milan, S. E., Abel, G. A., and Freeman, M. P.: On the use of IMAGE FUV for estimating the latitude of the open/closed magnetic field line boundary in the ionosphere, *Annales Geophysicae*, 26, 2759–2769, <https://doi.org/10.5194/angeo-26-2759-2008>, 2008.
- Burrell, A. G. and Chisham, G.: aburrell/ocbpy: Beta Release, <https://doi.org/10.5281/zenodo.1179230>, 2018.
- 10 Burrell, A. G., Halford, A., Klenzing, J., Stoneback, R. A., Morley, S. K., Annex, A. M., Laundal, K. M., Kellerman, A. C., Stansby, D., and Ma, J.: Snakes on a Spaceship—An Overview of Python in Heliophysics, *Journal of Geophysical Research: Space Physics*, 123, <https://doi.org/10.1029/2018ja025877>, 2018a.
- Burrell, A. G., van der Meeren, C., and Laundal, K. M.: aburrell/aacgm2: AACGMV2 2.5.1, <https://doi.org/10.5281/zenodo.1469697>, 2018b.
- 15 Carbary, J. F., Sotirelis, T., Newell, P. T., and Meng, C.-I.: Auroral boundary correlations between UVI and DMSP, *Journal of Geophysical Research*, 108, 1018, <https://doi.org/10.1029/2002JA009378>, 2003.
- Chen, Y.-J. and Heelis, R. A.: Motions of the Convection Reversal Boundary and Local Plasma in the High-Latitude Ionosphere, *Journal of Geophysical Research: Space Physics*, 123, 2953–2963, <https://doi.org/10.1002/2017ja024934>, 2018.
- Chen, Y.-J., Heelis, R. A., and Cumnock, J. A.: Response of the ionospheric convection reversal boundary at high latitudes to changes in the
20 interplanetary magnetic field, *Journal of Geophysical Research: Space Physics*, 120, 5022–5034, <https://doi.org/10.1002/2015ja021024>, 2015.
- Chisham, G.: Auroral Boundary Derived from IMAGE Satellite Mission Data (May 2000 - Oct 2002), <https://doi.org/10.5285/75aa66c1-47b4-4344-ab5d-52ff2913a61e>, 2017a.
- Chisham, G.: A new methodology for the development of high-latitude ionospheric climatologies and empirical models, *Journal of Geophysical
25 Research: Space Physics*, 122, 932–947, <https://doi.org/10.1002/2016JA023235>, 2017b.
- Clausen, L. B. N., Baker, J. B. H., Ruohoniemi, J. M., Milan, S. E., Coxon, J. C., Wing, S., Ohtani, S., and Anderson, B. J.: Temporal and spatial dynamics of the regions 1 and 2 Birkeland currents during substorms, *Journal of Geophysical Research: Space Physics*, 118, 3007–3016, <https://doi.org/10.1002/jgra.50288>, 2013.
- Cowley, S. W. H. and Lockwood, M.: Excitation and decay of solar-wind driven flows in the magnetosphere-ionosphere system, *Annales
30 Geophysicae*, 10, 103–115, 1992.
- Coxon, J. C., Milan, S. E., and Anderson, B. J.: vol. 235, chap. A review of Birkeland current research using AMPERE, pp. 257–278, American Geophysical Union, 2018.
- Drake, K. A., Heelis, R. A., Hairston, M. R., and Anderson, P. C.: Electrostatic Potential Drop Across the Ionospheric Signature of the Low-Latitude Boundary Layer, *Journal of Geophysical Research*, 114, A04215, <https://doi.org/10.1029/2008JA013608>, 2009.
- 35 Dungey, J. W.: Interplanetary Magnetic Field and the Auroral Zones, *Physical Review Letters*, 6, 47–48, 1961.

- Heelis, R. A. and Hanson, W. B.: Measurements of Thermal Ion Drift Velocity and Temperature using Planar Sensors, in: *Measurement Techniques in Space Plasmas: Particles*, edited by Pfaff, R. F., Borovsky, J., and Young, T. D., pp. 61–71, AGU, Washington, D.C., <https://doi.org/10.1029/GM102>, 1998.
- Holzworth, R. and Meng, C.-I.: Mathematical Representation of the Auroral Oval, *Geophysical Research Letters*, 2, 377–380, 1975.
- 5 Iijima, T. and Potemra, T. A.: The Amplitude Distribution of Field-Aligned Currents at Northern High Latitudes Observed by Triad, *Journal of Geophysical Research*, 81, 2165–2174, 1976.
- Jones, E., Oliphant, T., Peterson, P., et al.: *SciPy 1.1.0: Open source scientific tools for Python*, <http://www.scipy.org/>, 2001.
- Kilcommons, L. and Burrell, A. G.: *lkilcommons/ssj_auroral_boundary: Version 1 (Version v1.0.0)*, <https://doi.org/10.5281/zenodo.3267415>, 2019.
- 10 Kilcommons, L. M., Redmon, R. J., and Knipp, D. J.: A new DMSP magnetometer and auroral boundary data set and estimates of field-aligned currents in dynamic auroral boundary coordinates, *Journal of Geophysical Research: Space Physics*, 122, 9068–9079, <https://doi.org/10.1002/2016ja023342>, 2017.
- Longden, N., Chisham, G., Freeman, M. P., Abel, G. A., and Sotirelis, T.: Estimating the location of the open-closed magnetic field line boundary from auroral images, *Annales Geophysicae*, 28, 1659–1678, <https://doi.org/10.5194/angeo-28-1659-2010>, 2010.
- 15 Mende, S. B., Heeterds, H., Frey, H. U., Stock, J. M., Lampton, M., Geller, S. P., Abiad, R., Siegmund, O. H. W., Habraken, S., Renotte, E., Jamar, C., Rochus, P., Gérard, J. C., Sigler, R., and Lauche, H.: Far ultraviolet imaging from the IMAGE spacecraft. 3. Spectral imaging of Lyman-alpha and OI 135.6 nm., *Space Science Reviews*, 91, 287–381, https://doi.org/10.1007/978-94-011-4233-5_10, 2000.
- Milan, S.: AMPERE R1/R2 FAC radii, <https://doi.org/10.25392/leicester.data.11294861.v1>, https://leicester.figshare.com/articles/AMPERE_R1_R2_FAC_radii/11294861, 2019.
- 20 Milan, S. E., Carter, J. A., Korth, H., and Anderson, B. J.: Principal component analysis of Birkeland currents determined by the Active Magnetosphere and Planetary Electrodynamics Response Experiment, *Journal of Geophysical Research: Space Physics*, 120, 10,415–10,424, <https://doi.org/10.1002/grl.50505>, 2015.
- More, J., Sorenson, D., Garbow, B., and Hillstrom, K.: *The MINPACK Project*, in: *Sources and Development of Mathematical Software*, edited by Cowell, W., Prentice-Hall, Englewood Cliffs, N.J., U.S.A., <https://www.netlib.org/minpack/>, 1984.
- 25 Newell, P. T., Ruohoniemi, J. M., and Meng, C.-I.: Maps of precipitation by source region, binned by IMF, with inertial convection streamlines, *Journal of Geophysical Research*, 109, A10 206, <https://doi.org/10.1029/2004JA010499>, 2004.
- Redmon, R. J., Peterson, W. K., Andersson, L., Kihn, E. a., Denig, W. F., Hairston, M., and Coley, R.: Vertical thermal O⁺ flows at 850 km in dynamic auroral boundary coordinates, *Journal of Geophysical Research*, 115, A00J08, <https://doi.org/10.1029/2010JA015589>, 2010.
- Redmon, R. J., Denig, W. F., Kilcommons, L. M., and Knipp, D. J.: New DMSP database of precipitating auroral electrons and ions, *Journal of Geophysical Research: Space Physics*, 122, 9056–9067, <https://doi.org/10.1002/2016JA023339>, 2017.
- 30 Shepherd, S. G.: Altitude-adjusted corrected geomagnetic coordinates: Definition and functional approximations, *Journal of Geophysical Research: Space Physics*, 119, 7501–7521, <https://doi.org/10.1002/2014JA020264>, 2014.
- Spiro, R. W., Heelis, R. A., and Hanson, W. B.: Ion Convection and the Formation and of the Mid-Latitude and F Region Ionization Trough, *Journal of Geophysical Research*, 83, 4255–4254, 1978.
- 35 Waters, C. L., Anderson, B. J., and Liou, K.: Estimation of Global and Field Aligned Currents Using the Iridium System Magnetometer Data, *Geophysical Research Letters*, 28, 2165–2168, 2001.

Zhu, Q., Deng, Y., Richmond, A., Maute, A., Chen, Y.-J., Hairston, M., Kilcommons, L., Knipp, D., Redmon, R., and Mitchell, E.: Impacts of binning methods on high-latitude electrodynamic forcing: static vs. boundary-oriented binning methods, *J. Geophys. Res.: Space Phys.*, 124, <https://doi.org/10.1029/2019JA027270>, 2019.