

# Sensitivity of GNSS tropospheric gradients to processing options

Michal Kačmařík<sup>1</sup>, Jan Douša<sup>2</sup>, Florian Zus<sup>3</sup>, Pavel Václavovic<sup>2</sup>, Kyriakos Balidakis<sup>3</sup>, Galina Dick<sup>3</sup>, Jens Wickert<sup>3,4</sup>

<sup>1</sup> Department of Geoinformatics, VŠB – Technical University of Ostrava, Ostrava, The Czech Republic

5 <sup>2</sup> Geodetic Observatory Pecný, Research Institute of Geodesy, Topography and Cartography, Zdíby, The Czech Republic

<sup>3</sup> GFZ German Research Centre for Geosciences, Potsdam, Germany

<sup>4</sup> Institute of Geodesy and Geoinformation Science, Technical University of Berlin, Germany

*Correspondence to:* M. Kačmařík (michal.kacmarik@vsb.cz)

**Abstract.** An analysis of processing settings impact on estimated tropospheric gradients is presented. The study is based on  
10 the benchmark data set collected within the COST GNSS4SWEC action with observations from 430 GNSS reference stations  
in central Europe for May and June 2013. Tropospheric gradients were estimated in eight different variants of GNSS data  
processing using Precise Point Positioning (PPP) with the G-Nut/Tefnut software. The impact of the gradient mapping  
function, elevation cut-off angle, GNSS constellation and real-time versus post-processing mode were assessed by comparing  
the variants by each to other and by evaluating them with respect to tropospheric gradients derived from two numerical weather  
15 prediction models (NWM). All solutions using final orbit and clock products provided reliable tropospheric gradients  
obviously related to real weather conditions. However, the quality of high-resolution gradients estimated in (near) real-time  
PPP analysis still remains challenging task due to the quality of the real-time orbit and clock corrections. Although using  
simplified models, the comparison of GNSS and NWM gradients suggests the 3° elevation angle cut-off and GPS+GLONASS  
constellation for obtaining optimal gradient estimates. The state-of-the-art models should be then applied for low-elevation  
20 observations for obtaining the best repeatability of the station coordinates. Finally, systematic errors can affect the gradient  
components solely due to the use of different gradient mapping functions, and still depending on the applied observation  
elevation-dependent weighting. A latitudinal tilting of the troposphere in a global scale causes a systematic difference up to  
0.3 mm in the north gradient component, while large local gradients, usually pointing to a direction of increasing humidity,  
can cause systematic differences up to 0.9 mm in any component depending on the actual direction of the gradient.

## 25 1 Introduction

When processing data from Global Navigation Satellite Systems (GNSS), a total signal delay due to the troposphere is  
modelled by epoch- and station-wise Zenith Total Delay (ZTD) parameters, and, optimally, together with tropospheric  
gradients representing the first order asymmetry of the total delay. ZTDs, which are closely related to Integrated Water Vapour  
(IWV), are operationally assimilated into Numerical Weather Prediction models (NWM) and have been proven to improve  
30 precipitation forecasts (Vedel and Huang, 2004, Guerova et al., 2006, Shoji et al., 2009). Previous studies demonstrated that

the estimation of tropospheric gradients improves GNSS data processing mainly in terms of receiver position and ZTDs (Chen and Herring, 1997, Bar-Sever et al., 1998, Rothacher and Beutler, 1998, Iwabuchi et al., 2003, Meindl et al., 2004). Nowadays, tropospheric gradients are not assimilated into NWMs, however, they could be assimilated in future and they are essential for reconstructing slant total delays (STD). The STDs represent the signal travel time delay between the satellite and the station  
5 due to neutral atmosphere and they are considered useful in numerical weather prediction (Järvinen et al., 2007, Kawabata et al., 2013, Bender et al., 2016) and reconstruction of 3D water vapor fields using the GNSS tomography method (Flores et al., 2000, Bender et al., 2011).

Brenot et al. (2013) showed a significant improvement of IWV interpolated 2D fields when tropospheric gradients are taken into account. With the improved IWV fields, the authors studied small scale tropospheric features related to thunderstorms.  
10 Douša et al. (2018a) demonstrated the advantage of tropospheric gradients in the 2-stage troposphere model combining optimally NWM and GNSS data. Morel et al. (2015) presented a comparison study on zenith delays and tropospheric gradients from 13 stations at Corsica Island in the year 2011. Despite a good agreement in the ZTD, they found notable discrepancies in tropospheric gradients when estimated by using two different GNSS processing software, two different gradient mapping functions, and two different processing methods: 1) double-differenced network solution, and 2) Precise Point Positioning,  
15 PPP (Zumberge et al., 1997) solution. Douša et al. (2017) indicated a problem with systematic errors in tropospheric gradients due to absorbing instrumentation errors. Few attempts were made to compare the tropospheric gradients with independent estimates, i.e., those derived from Water Vapor Radiometer (WVR) or NWM data. For a selected number of stations such a comparison was made in Walpersdorf et al. (2001) where ZTDs and tropospheric gradients from GPS were compared with those derived from a high-resolution NWM ALADIN. A good correlation between GPS and NWM gradients was found for  
20 inland stations, but not for coastal ones. More recently Li et al. (2015) and Lu et al. (2016) showed that with the upcoming finalization of new systems such as Galileo and BeiDou the improved observation geometry yields more robust tropospheric gradient estimates. Li et al. (2015) found an improvement of about 20~35% for the multi-GNSS processing when compared with NWM and 21~28% when compared to WVR. Another multi-GNSS study on tropospheric gradients (Zhou et al., 2017) used data from a global network of 134 GNSS stations processed in six different constellation combinations in July 2016. An  
25 impact of gradients estimation interval (from 1 to 24 h) and cut-off elevation angle (between 3° and 20°) on a repeatability of receiver coordinates was examined. Better results were found for solutions where a shorter time interval of tropospheric gradient estimation was used and where the elevation cut-off angle of 7° or 10° was applied. However, strategies were not compared from the point of view of actually obtained gradient values. Finally, systematic errors and impacts of a gradient mapping function or observation weighting on estimated gradients have not been studied yet.

30 In this work, we systematically evaluate the quality of tropospheric gradients estimated from a regional GNSS dense network under different atmospheric conditions. Using a unique data set, we study the impact of several approaches. ZTDs and tropospheric gradients are then compared with the ones estimated from two NWMs – ERA5, which is a global atmospheric reanalysis, and a limited area short range forecast utilizing the Weather Research and Forecasting (WRF) model. Finally, we

quantified systematic differences in tropospheric gradients coming from the gradient mapping function and the method of observation weighting during a local event with strong wet gradients.

## 2 Data and Methods

### 2.1 Benchmark data set

5 The benchmark campaign was realized within the European COST Action ES1206 GNSS4SWEC to support development and validation of a variety of GNSS tropospheric products. An area in central Europe covering Germany, the Czech Republic and part of Poland and Austria was selected as a domain while May and June 2013 as a suitable time period due to occurrence of severe weather events including extensive floods. Data from 430 GNSS stations were collected together with meteorological observations from various instruments (synoptic, radiosonde, WVR, meteorological radar, etc.). In addition, tropospheric parameters from two global and one regional NWMs were generated. Detailed information about the benchmark campaign can be found in Douša et al. (2016). Although the presented study is based on the GNSS data collected within the benchmark campaign, all the presented GNSS and NWM solutions were newly prepared for this study.

### 2.2 Estimation of tropospheric gradients from GNSS

The STD as a function of the azimuth ( $a$ ) and elevation ( $e$ ) angle can be written as follows:

$$15 \quad STD(a, e) = mfh(e) * ZHD + mfw(e) * ZWD + mfg(e) * (Gn * \cos(a) + Ge * \sin(a)) \quad (1)$$

where ZHD denotes the Zenith Hydrostatic Delay and ZWD denotes the Zenith Wet Delay. The elevation angle dependency is given by mapping functions, which are different for the hydrostatic ( $mfh$ ), wet ( $mfw$ ) and gradient ( $mfg$ ) part. The tropospheric horizontal gradient vector is defined in the local horizontal plane with two components, one for the north-south direction ( $Gn$ ) and one for the east-west direction ( $Ge$ ). From the formula (1) is evident that GNSS gradient represents a gradient of both hydrostatic and wet part of the delay, therefore a total delay gradient.

During GNSS data processing, the ZHD is commonly taken from an a priori model, e.g. Saastamoinen (1972) or Global Pressure and Temperature (GPT, Boehm et al., 2007) based on climatological data, or it can be derived from NWM data. The ZWD, or a correction to the modelled ZHD, and tropospheric gradients are estimated as unknown parameters using a deterministic or stochastic model.

25 Current mapping functions for hydrostatic ( $mfh$ ) and wet ( $mfw$ ) delay components are based either on climatological data, e.g. Global Mapping Function, GMF (Boehm et al., 2006a) or NWM data, e.g. Vienna Mapping Function, VMF (Boehm et al., 2006b). An advantage of the first approach is its independence of external data. Several mapping functions for tropospheric gradients have also been developed in the past, e.g. by Bar-Sever et al. (1998), by Chen and Herring (1997), or the tilting mapping function introduced by Meindl et al. (2004). The gradient mapping function ( $mfg$ ) by Bar-Sever (BS) is given as

$$30 \quad mfg = mfw * \cot(e) \quad (2)$$

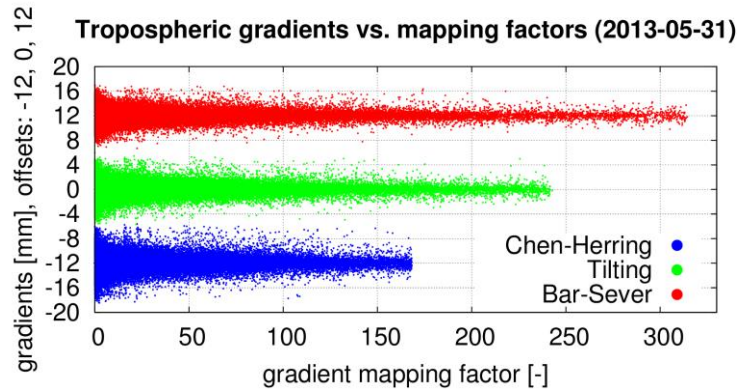
and from the formula is apparent that it depends on the selected  $mfw$ . The Chen and Herring (CH)  $mfg$  reads as

$$mfg = 1 / (\sin(e) * \tan(e) + c) \quad (3)$$

where  $c = 0.0032$ . Since  $c$  is related to the scale height, it experiences spatiotemporal variations. Nevertheless, based on Balidakis et al. (2018) a variable  $c$  does not yield a statistically significant improvement in describing the atmospheric state over a constant  $c$ . Finally, the tilting mapping function is defined in a generic way as a tilting of the  $mfw$  by using the so-called tropospheric zenith  $z$  and can be expressed as

$$mfg = \partial mfw / \partial z \quad (4)$$

Figure 1 illustrates the variability of the term  $(Gn * \cos(a) + Ge * \sin(a))$  in Eq. (1) and the size of the mapping factors represented by actual values of the three  $mfg$ . We included gradient contributions corresponding to all GNSS observations in the benchmark campaign and a single day (May 31, 2013). While the BS  $mfg$  generates the highest mapping factors and smaller gradient contributions (scatters in y-axis), the CH  $mfg$  provides the lowest mapping factors and, consequently, higher gradient values. The tilting  $mfg$  gives then factors in between BS and CH  $mfg$  and results in gradient contributions in between the two. We can thus further focus on BS and CH  $mfg$  only as these can be considered as two extreme cases.



**Figure 1.** Variability of gradient mapping factors and tropospheric gradient contributions expressed in azimuths of individual satellites. Three  $mfg$  were studied on May 31, 2013: Chen and Herring  $mfg$  (blue), Bar-Sever  $mfg$  (red) and tilting  $mfg$  (green).

We use the G-Nut/Tefnut software (Václavovic et al., 2014) for GNSS data processing of the benchmark campaign. This software utilizes the PPP method and is capable of multi-GNSS processing in real-time (RT), near-real time (NRT) and post-processing (PP) mode with a focus on all the tropospheric parameters estimation: ZTDs, tropospheric gradients and slant delays (Douša et al., 2018b). Stochastic modelling of the troposphere allows an epoch-wise parameter estimation by extended Kalman filter in RT solutions (FLT) or its combination with a backward smoother which is used for NRT and PP solutions (FLT+SMT), see Václavovic and Douša (2015).

Table 1 describes all eight variants of solution for the benchmark campaign produced using the G-Nut/Tefnut which differ in (a) elevation cut-off angle ( $3^\circ$  or  $7^\circ$ ), (b) gradient mapping function (Chen and Herring = CH or Bar-Sever = BS), (c) constellations (GPS only = Gx or GPS+GLONASS = GR) and (d) processing mode (post-processing using the FLT+SMT processing or simulated real-time using the FLT processing only). All the variants except the three were based on the post-processing mode using the backward smoother and the ESA final orbit and clock products (<http://navigation->

[office.esa.int/GNSS\\_based\\_products.html](http://office.esa.int/GNSS_based_products.html)). Three solutions, abbreviated as RT1GxCH3, RT3GxCH3 and RTEGxCH3, were used to test the performance of the Kalman filter and RT orbit and clock corrections instead of a post-processed solution supported with final precise products. The solutions RT1GxCH3 and RT3GxCH3 simulate a real-time capability of estimates when using the IGS01 (RT1GxCH3) and IGS03 (RT3GxCH3) corrections from the IGS Real-Time Service (RTS, <http://rts.igs.org>). While IGS01 RTS product is a GPS only single-epoch solution produced using software developed by ESA/ESOC, the IGS03 product is a GPS+GLONASS solution based on the Kalman filter and the BKG's BNC software. The last solution, RTEGxCH3, applying the ESA final product is used to test a benefit of the backward smoothing on the one hand, and, an impact of the quality of RT corrections on the other hand. Unfortunately, the solution based on the processing of GPS+GLONASS data in the simulated RT mode had to be rejected due to a highly variable quality of RT correction in 2013 affecting mainly the GLONASS contribution (and we noted temporal problems in GPS solutions too, see Figure 4). The GPT model was used for calculating a priori ZHDs and the GMF was used for mapping hydrostatic and wet delays to the zenith. Estimated tropospheric parameters are thus independent from any meteorological information. GNSS observations were processed using 30-hour data batches when starting six hours before the midnight of a given day in order to eliminate the PPP convergence. In all variants, the observation sampling of 300 s was used with ZTDs and tropospheric gradients estimated for every epoch. The station coordinates were estimated on a daily basis. The random walk of 6 mm/sqrt(hour) was applied for the ZTD and 1.5 mm/sqrt(hour) for the gradients. Absolute IGS model IGS08.ATX was used for the antenna phase centre offsets and variations. All variants used the elevation observation weighting of  $1/\sin^2(e)$ .

**Table 1.** Processing parameters of individual variants from the G-Nut/Tefnut software. Mode FLT denotes to simulated real-time solution using Kalman filter only, FLT+SMT to post-processing solution using the Kalman filter and the backward smoother.

Solution name	Elevation cut-off	Constellation	Gradient mapping function	Products	Mode
GxCH3	3	GPS	Chen and Herring	ESA final	FLT+SMT
GRCH3	3	GPS+GLONASS	Chen and Herring	ESA final	FLT+SMT
GRBS3	3	GPS+GLONASS	Bar-Sever	ESA final	FLT+SMT
GxCH7	7	GPS	Chen and Herring	ESA final	FLT+SMT
GRCH7	7	GPS+GLONASS	Chen and Herring	ESA final	FLT+SMT
RT1GxCH3	3	GPS	Chen and Herring	IGS01 RT	FLT
RT3GxCH3	3	GPS	Chen and Herring	IGS03 RT	FLT
RTEGxCH3	3	GPS	Chen and Herring	ESA final	FLT

### 2.3 Estimation of tropospheric gradients from NWM

Tropospheric gradients and zenith delays were derived from the output of two different numerical weather models; the ERA5 (<https://www.ecmwf.int/en/forecasts/datasets/archive-datasets/reanalysis-datasets/era5>) and a simulation utilizing the Weather Research and Forecasting (WRF) model (Skamarock et al., 2008). The ERA5 is a reanalysis produced at the European Centre for Medium-Range Weather Forecasts (ECMWF). The pressure, temperature and specific humidity fields are provided with a

horizontal resolution of approximately 31 km (T639 spectral triangular truncation) on 137 vertical model levels (up to 0.01 hPa) every hour. The WRF simulations are performed at GFZ Potsdam. The initial and boundary conditions for the limited area 24-hour free forecasts (starting every day at 0 UTC) stem from the analysis of the Global Forecast System (GFS) of the National Centers for Environmental Prediction (NCEP). The pressure, temperature and specific humidity fields are available every hour with a horizontal resolution of 10 km on 49 vertical model levels (up to 50 hPa).

The ray-trace algorithm by Zus et al. (2012) is used to compute STDs. The tropospheric gradients are derived from STDs as follows. At first, 120 STDs are computed at elevation angles  $3^\circ$ ,  $5^\circ$ ,  $7^\circ$ ,  $10^\circ$ ,  $15^\circ$ ,  $20^\circ$ ,  $30^\circ$ ,  $50^\circ$ ,  $70^\circ$ ,  $90^\circ$  and all azimuths between  $0^\circ$  and  $360^\circ$  with an interval of  $30^\circ$ ). Second, we compute azimuth-independent STDs under the assumption of a spherically layered troposphere. Third, the differences between the azimuth-dependent STDs and the azimuth-independent STDs are computed. Finally, the gradient components are determined by a least-square fitting. For details the reader is referred to the Appendix in Zus et al. (2015).

Using ERA5 long-term global data, we experimented with different observation elevation weighting schemes (equal versus standard elevation angle dependent weighting) and two *mfgs* (BS and CH). While using different observation elevation weighting schemes led to negligible differences in the tropospheric gradients, we found a significant systematic difference in the north gradient component between tropospheric gradients derived with BS and CH *mfg* (see Appendix A). Since NWM derived tropospheric gradients presented in this study were computed using CH *mfg*, in principal their comparison with GNSS gradients estimated with BS *mfg* should be treated cautiously.

We also note that tropospheric gradients can be derived (approximated) with the closed form expression depending on the north-south and east-west horizontal gradient of refractivity (Davis et al., 1993). We compared the tropospheric gradients derived with the two different methods with GNSS tropospheric gradients. We utilized the ERA5 and GNSS GRCH3 data. We find that for the considered stations (over the entire benchmark period) the root-mean square deviation between NWM and GNSS tropospheric gradients is 10 % smaller if we apply the first instead of the second method. This can be explained by the fact that the first approach, that is, calculating tropospheric gradients from ray-traced delays by least square adjustment, is the approach which is closer to the method applied in the GNSS analysis (parameter estimation).

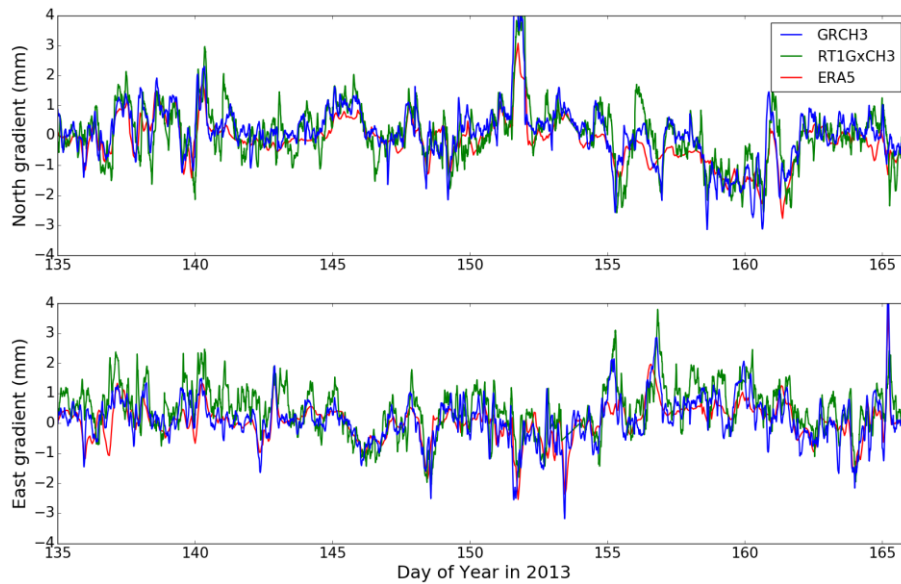
### 25 **3 Impact of applied processing settings on GNSS tropospheric gradients estimation**

ZTDs and tropospheric gradients from all eight variants were compared to each other and to the tropospheric parameters from ERA5 and WRF to evaluate the impact of various settings in GNSS data processing. Although about 430 GNSS stations are available in the benchmark data set, statistical results given in this section 3 are based on a subset of 243 stations. Firstly, 84 stations without the capability of receiving GLONASS signals were excluded. Secondly, stations which did not have at least 5 % of all the observations in the range of elevation angles between  $3^\circ$  and  $7^\circ$  were excluded as well. This rule was applied to allow a systematic evaluation of elevation cut-off angle impact on tropospheric parameters. The majority of the stations (103) had to be excluded because of inability to provide a sufficient number of observations at very low elevation angles.

Tropospheric parameters from the G-Nut/Tefnut software were provided every 5 minutes while the output from both NWM models was available every hour. Therefore, comparisons between GNSS solutions are based on a 5-minute interval while comparisons between GNSS and NWM solutions are based on a 1-hour interval.

### 3.1 Comparison of individual GNSS variants with each other

- 5 Absolute values of tropospheric gradient components stay typically below 1-2 mm under standard atmospheric conditions and can reach 4-6 mm during severe weather conditions. The gradient of 1 (6) mm corresponds to about 55 (330) mm slant delay correction when projected to 7° elevation angle. For an illustration an example time series of tropospheric gradients at station LDB2 (Brandenburg, Germany) for a period between May 15 and June 15, 2013 is given in Figure 2.



- 10 **Figure 2.** Tropospheric gradients retrieved from GNSS data processing (GRCH3, RT1GxCH3) and from NWM ERA5 at station LDB2 (52.209°N, 14.121°E, Germany) for a period from May 15, 2013 till June 15, 2013.

Results for individual GNSS variants comparison based on 3.6 million of pairs of values over 55 days and 243 GNSS stations are presented in Table 2. We notice a good agreement among all the post-processing (PP) variants from the statistics. The standard deviation (SDEV) indicates a negligible impact due to the change of *mfg* for both ZTD estimates (0.2 mm) and the smallest impact on tropospheric gradients (~0.14 mm). The impact increases then for both ZTD and gradients when comparing results of single and dual-constellation (1.2 mm for ZTD, ~0.18 mm for gradients). It should be noted that GLONASS observations were down-weighted by a factor of 1.5 in dual-constellation variants of solution. The gradients estimated with improved geometry and using more observations are expected to provide more accurate and reliable estimates. It is notable in the comparisons of single-/dual-constellation at different elevation cut-off angles (the impact is larger for a higher cut-off).

- 20 The largest impact is eventually observed due to the elevation cut-off angle, i.e. 2.2 mm and ~0.21 mm for ZTD and tropospheric gradients, respectively. By using common data, period, processing strategy and software in our analysis, a

significance of the impact of different models can be assessed by confronting achieved SDEV with those obtained when comparing gradients from different software, processing methods and even observing techniques. Generally, the SDEV values in Table 2 reach 30-50% of those obtained from comparing two different GNSS software and processing methods with two different NWM sources, and still using the same data set from the benchmark campaign (Douša et al. 2016).

5 Linear correlation coefficients (CorCoef) reach value of 1.0 in all cases for the ZTD comparisons with exception of 0.999 in case of standalone GPS solution and 7-deg elevation cut-off. The ZTDs were thus practically unaffected by different models. The correlation coefficients are then progressively decreasing from 0.99 to 0.95 for gradient comparisons when following trends described for results of SDEV. Generally, we then observed very small biases in all the cases. Interestingly, comparing results with CH and BS *mfgs* provided the largest biases of -0.05 mm and 0.03 mm for north and east gradient component, 10 respectively, although they fit the best in terms of SDEV and correlation coefficients compared to all other cases. These small systematic effects can be attributed to the average difference between tropospheric gradients computed with BS *mfg* compared to CH *mfg*. However, they are averaged over all stations and the period while they still strongly depend on both size and orientation of gradients as will be discussed in Section 4.

A penalty of RT processing is visible on the standard deviation values of ZTD and tropospheric gradients increased by a factor 15 of 3 and on significant biases. These are also emphasised by the reduction of correlation coefficients mainly for tropospheric gradients. The two RT solutions can be still considered of good quality if we take into consideration results found in Ahmed et al. (2016) or Kačmařík (2018). Since virtually zero biases for both ZTD and tropospheric gradients were present in the RTEGxCH3 variant, when using the Kalman filter too, the quality of RT tropospheric parameters is mainly a consequence of the quality of IGS01 and IGS03 RT products (Douša et al., 2018b).

20

**Table 2.** Comparison of individual variants of GNSS data processing run in post-processing mode (top) and in simulated real-time mode (bottom), units: BIAS and SDEV in mm, CorCoef represents a linear correlation coefficient.

Compared PP solutions	ZTD			N-S gradient			E-W gradient		
	BIAS	SDEV	CorCoef	BIAS	SDEV	CorCoef	BIAS	SDEV	CorCoef
GRCH3 – GRBS3	0.0	0.2	1.000	-0.05	0.15	0.991	0.03	0.13	0.995
GRCH3 – GxCH3	0.1	1.1	1.000	0.00	0.17	0.970	-0.02	0.16	0.973
GRCH3 – GxCH7	0.1	1.2	1.000	-0.01	0.20	0.961	-0.02	0.18	0.961
GRCH3 – GRCH7	0.1	2.1	1.000	0.01	0.20	0.958	0.00	0.18	0.964
GxCH3 – GxCH7	0.2	2.2	0.999	0.01	0.23	0.947	-0.01	0.21	0.954
Compared RT solutions	ZTD			N-S gradient			E-W gradient		
	BIAS	SDEV	CorCoef	BIAS	SDEV	CorCoef	BIAS	SDEV	CorCoef
GxCH3 – RT1GxCH3	-3.5	5.9	0.996	0.10	0.55	0.698	-0.18	0.57	0.648
GxCH3 – RT3GxCH3	-2.7	6.4	0.996	0.05	0.76	0.649	-0.08	0.80	0.584
GxCH3 – RTEGxCH3	-0.1	4.4	0.998	0.00	0.39	0.827	0.02	0.44	0.763
RT1GxCH3 – RT3GxCH3	0.8	5.0	0.997	-0.05	0.75	0.664	0.11	0.75	0.638



### 3.2 Comparison of individual GNSS variants with NWM

The statistics for the GNSS and NWM comparisons are summarized in Table 3. A bias of about 1 (4) mm is visible for ZTDs between GNSS and ERA5 with standard deviations around 9 (11) mm for individual PP (RT) GNSS solutions. The standard deviations are about 2 mm larger when GNSS and WRF are compared. This is probably due to the fact that the solution from WRF is based on a 24-hour free forecast (errors are supposed to grow with increasing forecast length) whereas the solution from ERA5 is based on a reanalysis. We attribute a negative bias of -3 mm in ZTD between GNSS and WRF to the global NCEP GFS analysis which is used for the initial and boundary conditions for the WRF solution. A negative bias of -5 mm in ZTD between two GNSS reference solutions and a solution based on the NCEP GFS was already reported in the past (Douša et al., 2016).

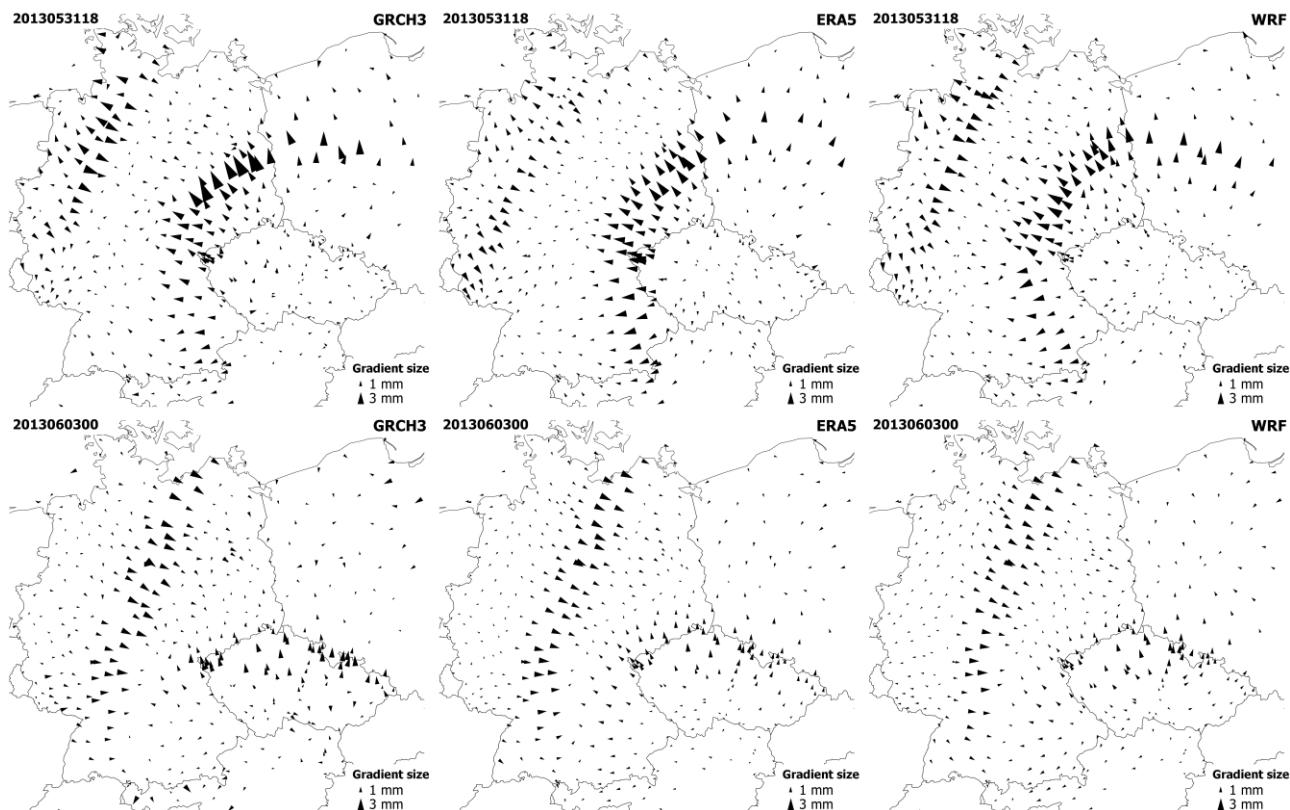
10 **Table 3.** Comparison of individual variants of GNSS data processing run in post-processing mode (top) and in simulated real-time mode (bottom) with NWM solutions, units: BIAS and SDEV in mm, CorCoef represents a linear correlation coefficient.

Compared PP solutions	ZTD			N-S gradient			E-W gradient		
	BIAS	SDEV	CorCoef	BIAS	SDEV	CorCoef	BIAS	SDEV	CorCoef
GRCH3 – ERA5	1.0	8.8	0.992	-0.02	0.47	0.725	-0.01	0.47	0.721
GRBS3 – ERA5	1.0	8.9	0.992	0.04	0.42	0.714	-0.03	0.43	0.708
GxCH3 – ERA5	0.9	9.1	0.991	-0.01	0.49	0.703	0.01	0.48	0.709
GxCH7 – ERA5	0.7	10.2	0.989	-0.02	0.56	0.624	0.02	0.53	0.652
GRCH7 – ERA5	0.9	9.8	0.990	-0.03	0.54	0.655	-0.00	0.51	0.672
GRCH3 – WRF	-3.0	11.3	0.987	-0.04	0.54	0.654	0.01	0.56	0.630
GRBS3 – WRF	-2.9	11.3	0.986	0.01	0.49	0.643	-0.02	0.52	0.618
GxCH3 – WRF	-3.0	11.5	0.986	-0.04	0.56	0.633	0.02	0.57	0.621
GxCH7 – WRF	-3.2	12.3	0.984	-0.05	0.62	0.564	0.03	0.61	0.573
GRCH7 – WRF	-3.1	12.0	0.985	-0.05	0.59	0.592	0.01	0.59	0.589
Compared RT solutions	ZTD			N-S gradient			E-W gradient		
	BIAS	SDEV	CorCoef	BIAS	SDEV	CorCoef	BIAS	SDEV	CorCoef
RT1GxCH3 – ERA5	4.4	10.5	0.988	-0.12	0.59	0.606	0.19	0.58	0.578
RT3GxCH3 – ERA5	3.6	10.9	0.988	-0.07	0.85	0.504	0.08	0.87	0.456
RTEGxCH3 – ERA5	1.0	9.7	0.990	-0.01	0.47	0.692	-0.01	0.46	0.680
RT1GxCH3 – WRF	0.57	12.6	0.983	-0.14	0.65	0.544	0.21	0.65	0.504
RT3GxCH3 – WRF	-0.3	12.9	0.982	-0.09	0.89	0.451	0.10	0.92	0.391
RTEGxCH3 – WRF	-2.9	12.0	0.985	-0.04	0.54	0.627	0.01	0.54	0.597
ERA5 - WRF	-3.9	11.1	0.987	-0.02	0.40	0.771	0.01	0.44	0.722

With regards to the tropospheric gradients, the biases between GNSS and NWM stayed within a range from -0.05 to 0.04 mm (with the exception of the GNSS RT solution). The standard deviations between GNSS and NWM were approximately doubled or tripled when compared to standard deviations between individual variants of GNSS solutions. They were also found to be higher for the WRF than for ERA5. Again, this can be probably explained by the fact that the solution from WRF is based on a 24-hour free forecast whereas ERA5 is based on a reanalysis.

Obviously, NWMs cannot be regarded as a ground truth. However, a similar pattern is present in results for both of them: standard deviations are smaller and correlation coefficients higher for GNSS solutions using a lower cut-off elevation angle (3° instead of 7°) and when using more observations (GPS+GLONASS). For example, the SDEV for north gradient component between GNSS and ERA5 is 0.56 mm for the GxCH7 variant while 0.47 mm for the GRCH3 variant. This represents a decrease of 16 %. In this regards we also derived tropospheric parameters from both NWMs using a 7° cut-off elevation angle and repeated the comparisons to test if GNSS variants of solution with a 7° cut-off would not be closer to NWM solutions based also on the 7° cut-off angle. And we always found a better agreement between any evaluated GNSS variant of solution and the NWM solution based on the 3° cut-off angle – in terms of bias, standard deviation and correlation coefficient. It indicates that the settings of cut-off elevation angle in NWM ray-tracing does not influence the described pattern in GNSS results. From two GNSS variants differing only in the *mfg*, the solution applying the BS mapping function is closer to the NWMs in terms of standard deviation. Since the solution based on CH *mfg* reaches slightly higher values of correlation coefficient than the solution based on BS *mfg*, the lower values of standard deviation can be partly understood as the magnitudes (modulus of the gradient vector  $\sqrt{Gn^2 + Ge^2}$ ) of GNSS tropospheric gradients using the BS *mfg* are smaller compared to the CH *mfg* (see next Section) and the magnitudes of NWM tropospheric gradients are more smoothed compared to the GNSS tropospheric gradients.

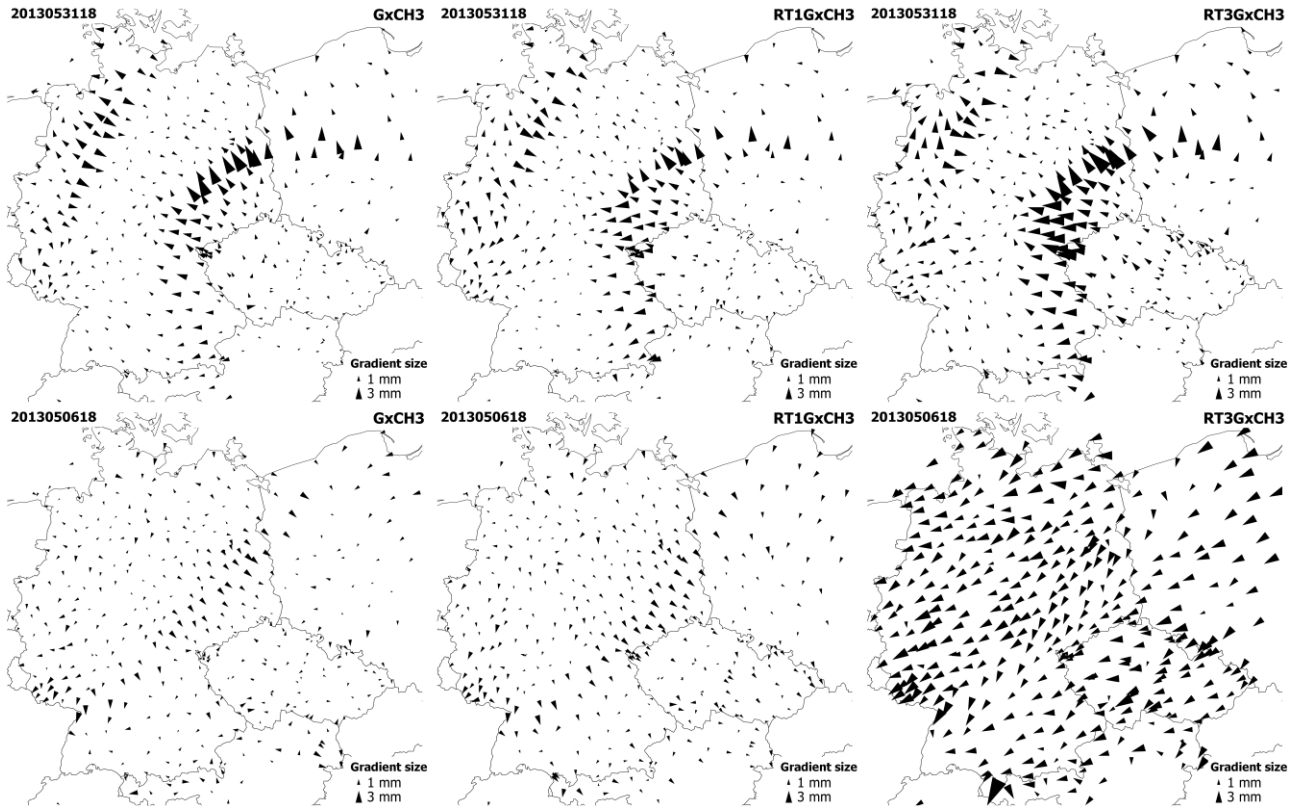
Maps showing tropospheric gradients were generated for all the variants of GNSS solutions and both NWM solutions and visually evaluated for the whole benchmark period. For better visualization we included all the GNSS stations of the benchmark campaign, i.e. not just the subset of 243 stations used for the presented statistics. Generally, GNSS provided homogenous fields of tropospheric gradients without a noisy behaviour at the level of individual stations and a very good agreement in gradient directions and usually also in gradient magnitudes was found between GNSS and NWM gradient maps. In Figure 3, two examples are shown for different events when a weather front was passing over the studied area. Tropospheric gradients derived from NWM provided more smoothed gradient fields, but somehow limited to render local structures mainly due to the spatial resolution of both NWMs. As the ERA5 model has coarser spatial resolution than the WRF model, such behaviour was a little bit more apparent in its outputs. On the other hand, when compared to results of the 1° × 1° resolution global models ERA-Interim and NCEP GFS (Douša et al., 2016), the presented NWMs tropospheric gradients have larger magnitudes. A detailed evaluation of tropospheric gradient maps with meteorological observations will be a subject of an upcoming study.



**Figure 3.** Tropospheric gradient maps from GNSS GRCH3 solution (left), NWM ERA5 solution (middle) and NWM WRF solution (right) on 31 May 2013, 18:00 UTC (top) and on 03 June 2013 00:00, UTC (bottom).

Comparing GNSS to NWM products in Table 3 indicated that the RTEGxCH3 solution driven by the Kalman filter and the  
 5 ESA final product shows a comparable performance to the GxCH3 solution driven by the Kalman filter and the backward smoother. An increase of bias and standard deviation values for other solutions based on RT mode indicates that the quality of the RT tropospheric product is dominated by an actual quality of RT orbit and clock corrections. In this regard, we examined systematically all tropospheric gradient maps and found that gradients from the RTEGxCH3 solution are always in a very good agreement with PP solutions. Although there were imperfections in matching RT1GxCH3 gradients and PP solutions, the performance can be still considered as generally good and stable. This was however not the case of the RT3GxCH3 solution  
 10 where we observed a varying quality of estimated tropospheric gradients. For the majority of epochs, in particular during the periods with strong gradients, the tropospheric gradients could be evaluated as acceptable. However, situations when gradients from all the stations point to the same direction occurred from time to time, obviously without a physical relation to the actual weather situation. An example of this behaviour is presented in Figure 4 where tropospheric gradients from the RT3GxCH3  
 15 solution behave normally on 31 May 2013, 18:00 UTC, and became unrealistic on 6 May 2013, 18:00 UTC where all the stations point to the south-west direction and reveal high gradient magnitudes. Such issues occurred occasionally for a limited

period of time in the RT3GxCH3 solution only. The reason is an instability of the RT3 stream during the initial period (the first half of 2013) affected by many interruptions and data gaps thus caused frequent parameter re-initialization in PPP.



**Figure 4.** Tropospheric gradient maps from GNSS GxCH3 solution (left), GNSS RT1GxCH3 solution (middle) and GNSS RT3GxCH3 solution (right) on 31 May 2013, 18:00 UTC (top) and on 06 May 2013, 18:00 UTC (bottom).

### 3.3 Additional assessment of processing settings on GNSS tropospheric gradients

Mean gradient magnitudes and azimuth angles (direction of gradient) over the whole benchmark period were computed for 243 GNSS stations and are presented in Table 4. Mean magnitudes of tropospheric gradients from all PP GNSS variants oscillated around 0.85 mm and 0.67 mm when using the CH *mfg* and the BS *mfg*, respectively. Gradients computed using the latter show about 17 % smaller gradients compared to the former if all the processing aspects remained identical. Both RT solutions also resulted with higher gradient magnitudes, namely +14 % for RT1GxCH3 and +47 % for RT3GxCH3 when compared to the corresponding GxCH3 PP variant. A mean gradient magnitude of about 0.7 mm was found for both NWM solutions, i.e. of about 0.1 mm smaller than for the GRCH3 solution. This can be mainly explained by the limited horizontal resolution of the NWMs.

Table 4 shows that mean tropospheric gradients point towards the equator, see also Meindl et al. (2004). Such a mean gradient direction does not depend on the gradient mapping function. By adding GLONASS observations the mean gradient direction

was changed by  $+2^\circ$ , however, actual effects were found to be highly station-dependent with a typical range of  $\pm 5^\circ$  for individual stations. The direction of mean gradient in both NWM solutions was in a very good agreement with all GNSS post-processing variants.

Directions of mean gradient over individual stations were mostly within  $\pm 15^\circ$  when compared to the total mean gradient estimated for the stations and the solution variant. On the other hand, the performance was not identical for the individual solutions. A change of cut-off elevation angle from  $7^\circ$  to  $3^\circ$  led to an increased number of stations with the mean gradient direction within  $\pm 15^\circ$  of the total mean direction and to a decreased number of stations with a mean gradient direction differing for more than  $30^\circ$  (regarded as outlier stations in Table 4). Two GNSS stations were marked as outliers by all processed variants with their mean gradient direction differing by more than  $50^\circ$  from the total variant mean. Both of them are located in a developed area in south-west Germany and are using the same receiver and antenna type from Leica, which is however used by many other stations in the same region where no issues with gradient mean angle were identified. Still, the reason of their different behaving can be of instrumental or environmental origin.

**Table 4.** Mean magnitudes and azimuth angles of tropospheric gradients from all individual GNSS variants of processing and NWMs ERA5 and WRF.

Solution	Mean magnitude (mm)	Mean azimuth ( $^\circ$ )	Percentage of stations with mean azimuth = total_mean $\pm 15^\circ$	Percentage of stations with mean azimuth = total_mean $\pm 30^\circ$	Number of outlier stations
GRCH3	0.81	170.3	88.9	99.2	2
GRBS3	0.67	170.4	91.8	98.8	3
GxCH3	0.83	168.4	88.1	97.5	6
GxCH7	0.86	168.2	74.1	95.1	12
GRCH7	0.84	170.5	79.8	97.1	7
RT1GxCH3	0.95	152.4	92.6	97.9	5
RT3GxCH3	1.22	162.7	96.3	98.8	3
RTEGxCH3	0.75	168.7	86.0	97.5	6
ERA5	0.68	169.4	96.3	100.0	0
WRF	0.73	171.0	100.0	100.0	0

Table 5 summarizes mean repeatability of daily coordinates as well as statistical comparison of formal errors of estimated ZTDs and tropospheric gradients from different GNSS processing variants. The station coordinates repeatability is improved when using combined GPS+GLONASS solutions compared to GPS-only solutions, namely by a factor of 2 and 1.2 in horizontal components and the height, respectively. The number of available satellites and their geometry plays a significant role in this context. An increase of the elevation angle cut-off (from  $3^\circ$  to  $7^\circ$ ) resulted in improved height repeatability, which corresponds to Zhou et al. (2017) suggesting optimal  $7^\circ$  cut-off for the height repeatability when comparing results of different elevation angle cut-off ( $3^\circ$  -  $15^\circ$ ). However, it should be noted that GPT+GMF models and the PPP method were used in both cases. Contrary, Douša et al. (2017) observed an improvement in the height repeatability even when using the elevation angle

cut-off  $3^\circ$  (compared to  $7^\circ$  and  $10^\circ$ ) when exploiting double-difference observations, the VMF1 mapping function (Boehm et al., 2006b) and the Bernese GNSS Software (Dach et al. 2015). This discrepancy might be attributed to a slightly worse modelling of low-elevation observations when using the GPT+GMF, in particular when the PPP strongly depends on all modelling aspects of undifferenced observations. We also notice a slightly better performance in case of the BS *mfg* when compared to the CH *mfg*. The results of the forward filter processing didn't show any degradation when using the ESA final products (RTEGxCH3). When using the IGS real-time product, the repeatability of all coordinates got worse by a factor of 2-3 and 4-5 for RT1GxCH3 and RT3GxCH3 variant respectively. The latter is attributed to a lower quality of the IGS RT3 products during some periods, see Figure 4.

Formal error of the parameter can be generally regarded as an estimation uncertainty. Typically, high formal errors for tropospheric parameters occur at situations when estimated under unfavourable conditions, e.g. low number of observations and/or their poor geometry and/or their poor quality. Naturally, smaller formal errors correspond to the lower elevation angle cut-off, which can be observed for both ZTDs and tropospheric gradients in Table 5. Formal errors are about 17% and 11% smaller when using the  $3^\circ$  cut-off (GRCH3) compared to the  $7^\circ$  cut-off (GRCH7) for horizontal gradients and ZTDs, respectively, thus indicating a higher impact on the former. A decrease of formal errors of tropospheric gradients estimated with a  $3^\circ$  cut-off compared to  $10^\circ$  cut-off was previously reported also by Meindl et al. (2004). Interestingly, using the BS *mfg* resulted in smaller formal errors of tropospheric gradients, but we haven't observed any change in formal errors of other estimated parameters. The smaller errors may suggest an improvement in estimated parameters, i.e. see coordinates repeatability, but it can be also partly attributed to the effect of different size of *mfg* coefficients.

**Table 5.** Mean position repeatability and formal errors and their standard deviation for tropospheric parameters from individual GNSS processing variants.

GNSS solution	Position repeatability			ZTD formal error		N gradient formal error		E gradient formal error	
	North (mm)	East (mm)	Height (mm)	Mean (mm)	SDEV (mm)	Mean (mm)	SDEV (mm)	Mean (mm)	SDEV (mm)
GRCH3	1.71	4.13	5.60	3.81	0.37	0.81	0.10	0.81	0.09
GRBS3	1.69	4.13	5.53	3.82	0.37	0.74	0.09	0.75	0.09
GxCH3	3.62	8.68	5.91	4.28	0.46	0.93	0.13	0.90	0.13
GxCH7	3.46	9.26	5.43	4.84	0.44	1.14	0.14	1.05	0.14
GRCH7	1.71	4.09	4.96	4.28	0.36	0.99	0.10	0.95	0.11
RT1GxCH3	3.97	10.71	7.57	6.71	1.72	0.91	0.08	0.92	0.09
RT3GxCH3	9.13	19.69	8.51	7.09	1.76	1.50	0.22	1.53	0.22
RTEGxCH3	1.68	3.91	5.74	6.60	0.67	0.91	0.08	0.92	0.08

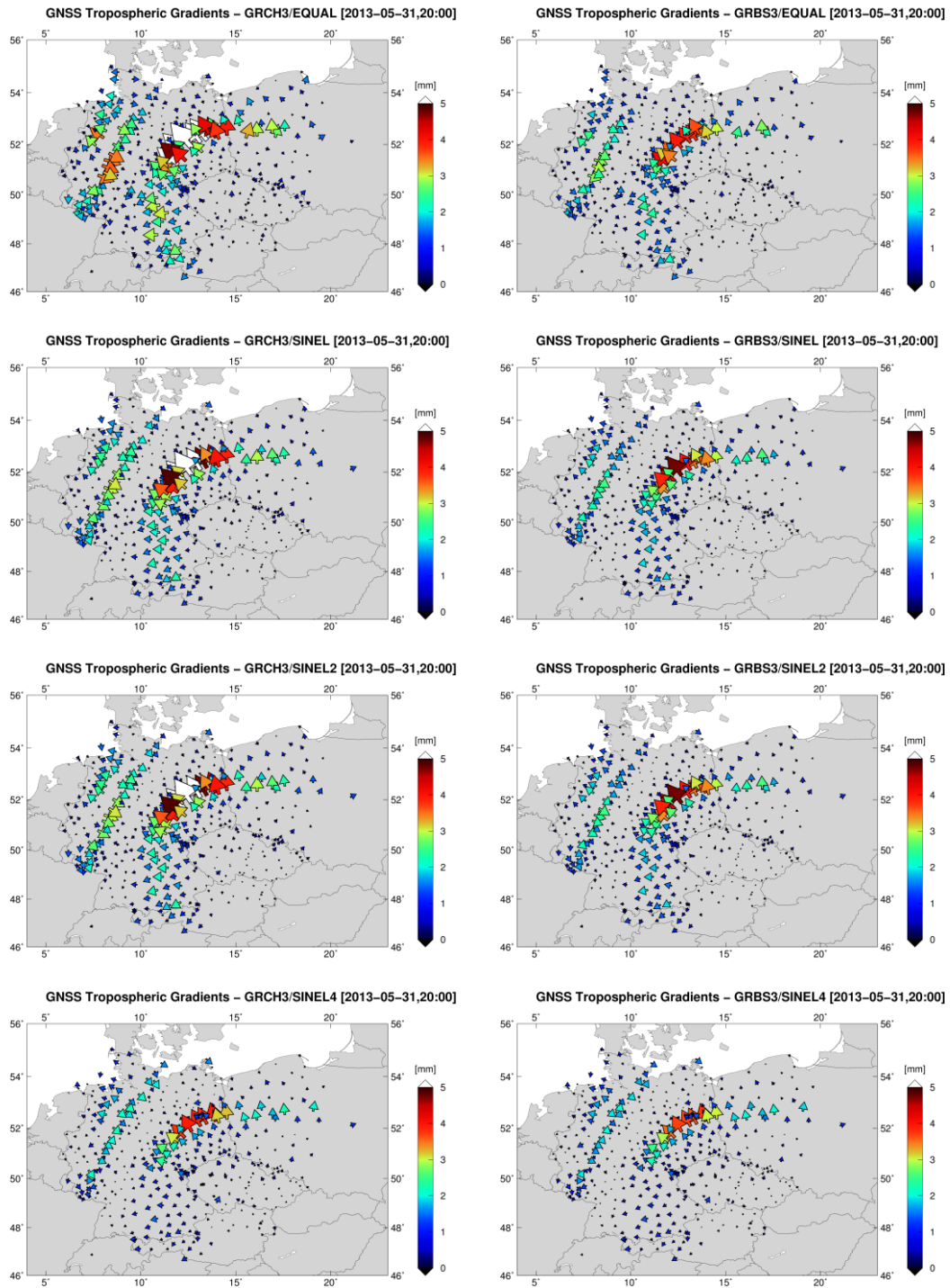
#### 4 Systematic effects of GNSS tropospheric gradients estimation

In this section, we focus on systematic differences induced by utilizing different *mfg* and observation elevation-dependent weighting (OEW). For two solutions defined in Section 2.2 and utilizing CH *mfg* (GRCH3) and BS *mfg* (GRBS3), we

5 additionally generated four variants using various OEW schemes: 1) EQUAL, equal weighting, 2) SINEL1,  $1/\sin(e)$ , 3) SINEL2,  $1/\sin^2(e)$ , and 4) SINEL4,  $1/\sin^4(e)$ . The contribution of low-elevation observations to all estimated parameters decreases with increasing power  $y$  in  $1/\sin^y(e)$ . As a consequence, the magnitude of tropospheric gradients is reduced due to the strong dependence on such observations. The impact of the *mfg* on the estimated tropospheric gradients is then reduced too. These variants were provided for May 31, 2013 which is an interesting day due to an occlusion front present over Germany, and captured by strong tropospheric gradients both from GNSS and NWM.

Figure 5 displays maps of tropospheric gradients on May 31, 2013 (18:00 UTC) from both GRCH3 (left panels) and GRBS3 (right panels) solutions when applying EQUAL, SINEL, SINEL2 and SINEL4 OEW schemes (panel rows from top to bottom). We can observe that OEW impacts magnitudes of gradients, but not much their directions. Magnitudes of individually estimated gradients from nearby stations show better consistency when using any real weighting compared to the EQUAL weighting suggesting a better quality of such product. This is also in agreement with our previous findings when studying the distribution of post-fit carrier-phase residuals with respect to the elevation angle (not showed). We achieved better performance when using SINEL2 scheme and worse when using EQUAL elevation-dependent weighting, see below in this section. The impact of *mfg* on estimated gradients clearly shows then systematic differences in magnitudes of gradients when considering different OEW schemes, compare panels from top to bottom. The gradients estimated with CH *mfg* (left panels) are then always larger than with BS *mfg* (right panels), independently of OEW used. We can also notice the gradient maps from SINEL and SINEL2 are very similar. The comparison of OEW schemes also demonstrated a strong impact of low-elevation observations reflecting a local tropospheric asymmetry in the water vapour distribution where SINEL4 weighting shows highly reduced gradients.

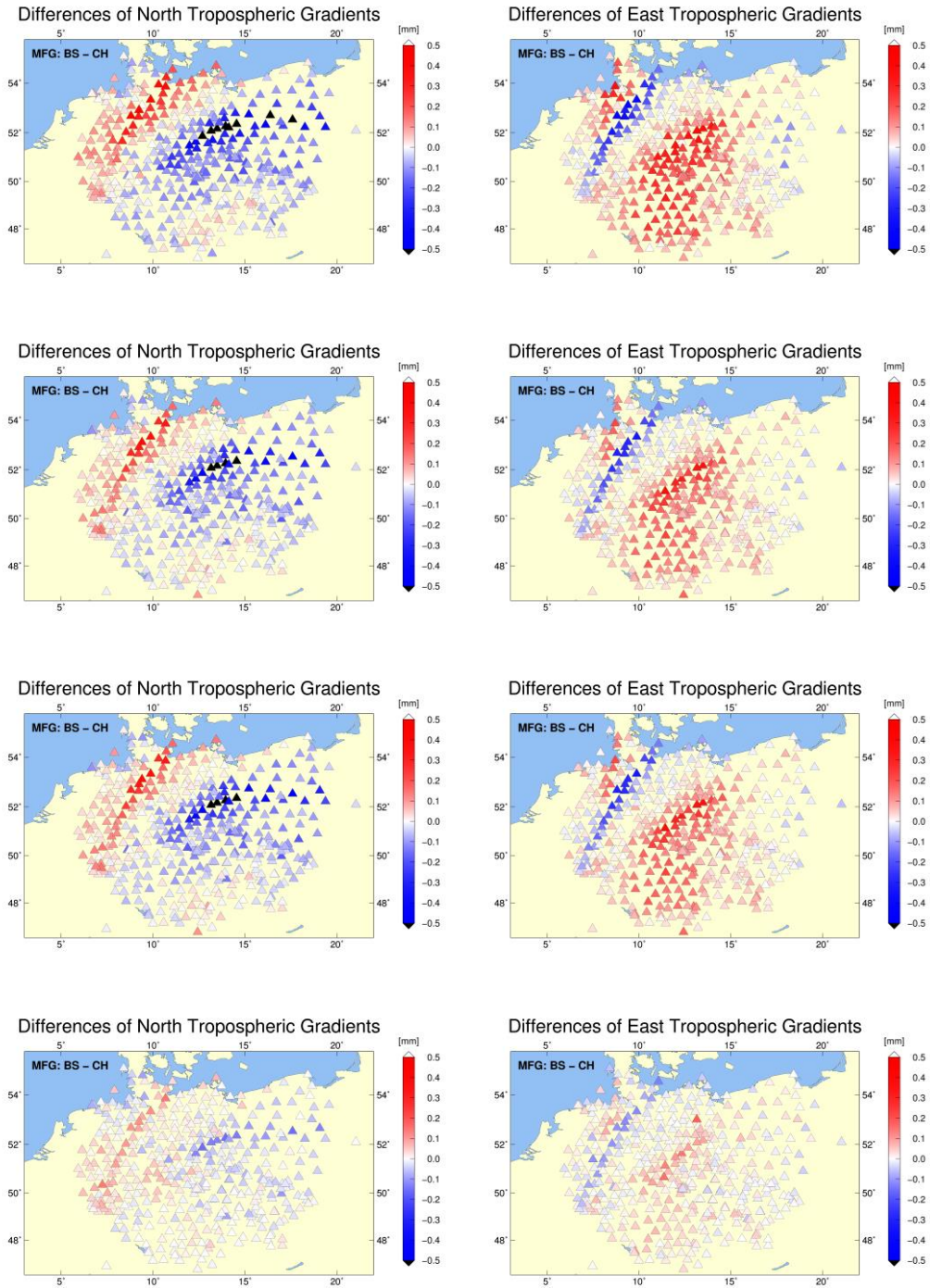
20



5 **Figure 5.** Tropospheric gradient maps on May 31, 2013 (18:00 UTC) from GNSS solutions using: Chen and Herring *mfg* (left panels), Bar-Sever *mfg* (right panels) and EQUAL, SINEL, SINEL and SINEL4 (from top to bottom panels) observation weighting schemes.

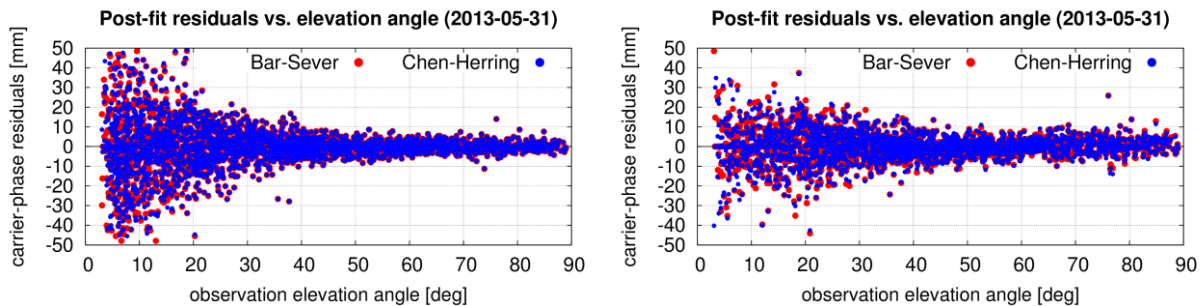


Figure 6 shows mean differences (over all epochs in May 31, 2013) in north (left panels) and east (right panels) gradient components between the two *mfg* ( $BS\ mfg$  minus  $CH\ mfg$ ) when using all OEW schemes. Such differences depend on both the magnitude and direction of estimated gradients when these are decomposed into two components. In our case, positive differences in north and east component appear when the estimated gradients point to south and west, respectively, and negative differences occur when the gradients point to opposite directions. Largest differences were observed for EQUAL weighting (top panels), which gradually decreased for SINEL, SINEL2 (next panel rows) and almost disappeared for SINEL4 (bottom panels).



5 **Figure 6.** Mean differences of tropospheric gradient north component (left panels) and east component (right panels) due to different *mfg*: Chen and Herring (CH), Bar-Sever (BS) when using the EQUAL, SINEL, SINEL2 and SINEL4 (from top to bottom panels) observation weighting schemes. Mean differences are calculated over full day May 31, 2013.

Figure 7 finally displays carrier-phase post-fit residuals with respect to the elevation for selected solutions. The SINEL2 OEW scheme in the left panel shows more homogenous distribution of carrier-phase post-fit residuals above the elevation angle of  $30^\circ$  when compared to the EQUAL scheme (right panel). While the *mfg* selection impacts SINEL2 residuals on a few millimetre-level below  $15^\circ$ , the EQUAL residuals could be affected at any elevation angles even up to the zenith direction. Generally, the SINEL2 results in a more realistic view considering the errors in GNSS observations which are expected to increase with a decrease of elevation angle and which are forming post-fit residuals. Besides atmospheric ones we mean e.g. multipath effects, uncertainty of phase centre variations, lower signal-to-noise ratio, obstructions or cycle slips.



**Figure 7.** Post-fit phase residuals distribution when using different gradient mapping functions, Bar-Sever (red) and Chen and Herring (blue), and observation weighting: SINEL2 (left) and EQUAL (right).

## 5. Conclusions

We presented an impact assessment of selected GNSS processing settings on estimated tropospheric gradients together with an evaluation of systematic differences resulting from gradient mapping function and observation elevation weighting. We exploited the GNSS4SWEC benchmark campaign covering May and June in 2013 with prevailing wet weather when the GNSS tropospheric gradients could provide a valuable information for meteorological applications. Although the time period covered some severe weather events, it also contained a lot of days with standard weather conditions with tropospheric gradients close to zero. Presented results could be therefore considered representative for European conditions during the warmer part of the year.

ZTD values and tropospheric gradients were estimated in eight variants of GNSS data processing and derived from two NWMs (a global reanalysis and a limited area short range forecast). Statistical comparisons and a systematic visual inspection of tropospheric gradient maps demonstrated that all post-processing solutions using final precise products can be regarded as robust and their gradient estimates are clearly related to real weather conditions. All solutions gave tropospheric parameters in high temporal resolution (5 minutes). As fully independent of meteorological input data, tropospheric gradients can provide additional interesting information, along with the ZTD, in support of NWM forecasts.

A positive impact of a lower elevation angle cut-off (from  $7^\circ$  to  $3^\circ$ ) suggested more robust tropospheric gradient estimates. A 10% reduction in standard deviation was obtained when comparing GNSS gradients to NWM gradients, and also by analysing

formal errors of tropospheric gradients and station-wise mean gradient directions. On the other hand, the usage of lower cut-off angle led to a slightly worse station height repeatability (10 %), which is partly in contradiction to the achievements from Douša et al. (2017). However, our results agree with Zhou et al. (2017) and the discrepancy is attributed to the use of PPP method with simplified modelling (GPT+GMF) for low-elevation observations. The 3° elevation angle cut-off can be thus  
5 recommended for an optimal gradient estimates from GNSS data.

A small decrease of standard deviation of estimated gradients (2 %) was achieved when using GPS+GLONASS instead of GPS only and compared to NWM gradients. This indicates that the post-processing tropospheric gradients can be reliably estimated solely with GPS constellation. However, it may still depend on applied software, strategy, products and processing, e.g. (near) real-time. In this regard, Li et al. (2015) and Lu et al. (2016) demonstrated that tropospheric gradients from multi-  
10 GNSS PPP processing improved their agreement with those estimated from NWM and WVR when compared to standalone GPS processing.

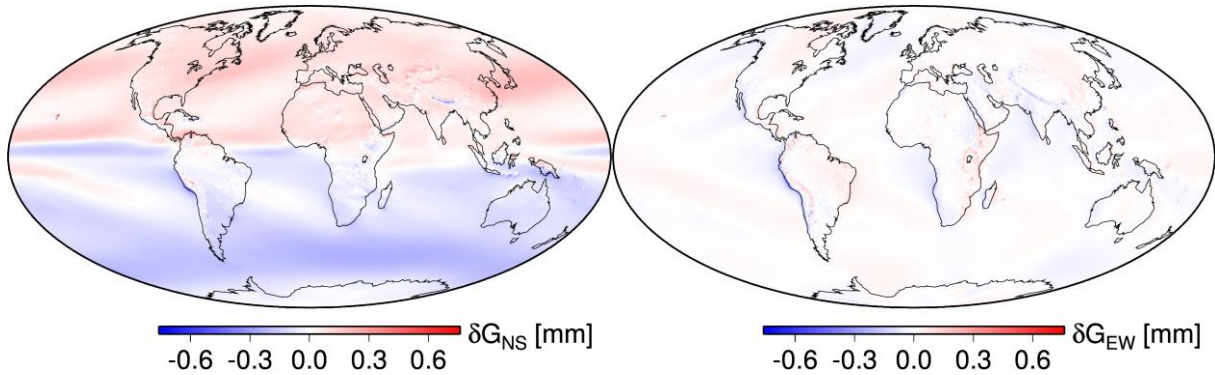
Using a simulated real-time processing mode, the agreement of GNSS versus NWM tropospheric gradients revealed an increase in standard deviation of about 17 % (75 %) for IGS01 (IGS03) RT products when compared to the corresponding GNSS post-processing gradients. We also show that the quality of real-time tropospheric parameters is dominated by the  
15 quality of real-time orbit and clock corrections, and to a much lesser extent by the processing mode, i.e. Kalman filter without backward smoothing. Tropospheric gradients from the RT solution using the IGS03 RT product showed occasionally a large misbehaving of tropospheric gradients at all GNSS stations obviously not related to weather conditions. This was caused by frequent PPP re-initializations due to interruptions and worse quality of the IGS03 RT product, while normal results were achieved by using the IGS01 RT product. Thus providing high-resolution gradients in (near) real-time solution still remains  
20 challenging, which would require optimally a multi-GNSS constellation and high-accuracy RT products.

We studied systematic differences in estimated tropospheric gradients. Unlike for ZTDs, average systematic differences up to 0.5 mm over one day, and up to 0.9 mm for individual gradient components during extreme cases, can affect the magnitude of estimated tropospheric gradients solely due to utilizing different gradient mapping functions or elevation-dependent weightings. This difference was observed between Bar-Sever and Chen and Herring *mfg* while the tilting *mfg* behaves in  
25 between these two. It affects the gradient magnitudes, not their directions, however, the gradient direction results in different projections into gradient components. In a global scope, a long-term mean gradient pointing to the equator causes systematic differences up to 0.3 mm in the north gradient component between Bar-Sever and Chen and Herring *mfg* (see Appendix A).

Both smaller gradient formal errors and slightly improved height repeatability suggest more accurate modelling when using the Bar-Sever *mfg*. It also resulted in a better agreement with ERA5 NWM which, however, could be also attributed to smaller  
30 values usually calculated from NWM data. Without an accurate and independent gradient product, it is still difficult to make a strong recommendation among different *mfgs*, i.e. resulting in different absolute gradient values. In any case, we could strongly recommend to use the same *mfg* whenever comparing or combining tropospheric gradients derived from different sources (GNSS, WVR or NWM). On the other hand, if tropospheric gradients are used solely for reconstructing slant total delays, different *mfgs* should provide very similar results.

## Appendix A

In Figure 8 the systematic difference in the derived tropospheric gradients based on ERA5 data (average over 10 years) is shown for any point on Earth's surface between tropospheric gradients estimated utilizing the BS *mfg* and tropospheric gradients estimated utilizing the CH *mfg*. Whereas there is no considerable bias in the east gradient component, the mean bias reaches up to 0.3 mm in the north gradient component (positive in the northern and negative in the southern hemisphere). We note that the mean tropospheric gradients point to the equator (see Section 3.3), i.e., the north gradient component is negative in the northern hemisphere and positive in the southern hemisphere. This is due to the fact that the mean zenith delays increase towards the equator (see e.g. Meindl et al., 2004). The systematic difference between these two *mfgs* is due to the fact that for the same slant total delays the magnitude of gradients which are estimated utilizing a smaller *mfg* are larger than the magnitude of gradients which are estimated utilizing a larger *mfg*. The product of the *mfg* and the tropospheric gradients, i.e., the azimuth-dependent part of the tropospheric delay, remains approximately the same.



**Figure 8.** Systematic difference (average over 10 years) for any point on Earth's surface between tropospheric gradients estimated utilizing the gradient mapping function of Bar-Sever and tropospheric gradients estimated utilizing the gradient mapping function of Chen and Herring. The left panel shows the north gradient component, the right panel the east gradient component. The result is based on ERA5 data.

## Acknowledgement

The authors thank all the institutions which provided GNSS observations for the COST ES1206 Benchmark campaign (Douša et al., 2016). F.Z. wants to thank Dr. Thomas Schwitalla (Institute of Physics and Meteorology, University Hohenheim) for the introduction to the WRF system. The ECMWF is acknowledged for making publicly available ERA5 reanalysis fields that were generated using Copernicus Climate Change Service Information 2018 (<https://www.ecmwf.int/en/forecasts/datasets/archive-datasets/reanalysis-datasets/era5>). The GFS analysis fields are provided by the National Centers for Environmental Prediction (<http://www ftp.ncep.noaa.gov/data/nccf/com/gfs/prod>). The study was realized during a mobility of M.K. at GFZ Potsdam funded by the EU ESIF project No. CZ.02.2.69/0.0/0.0/16\_027/0008463. J.D. and P.V. acknowledge the Ministry of the Education, Youth and Science of the Czech Republic for financing the study with project No LO1506 and supporting benchmark data with project No LM2015079.

## References

- Ahmed, F., Václavovic, P., Teferle, F.N., Douša, J., Bingley, R. and Laurichesse, D.: Comparative analysis of real-time precise point positioning zenith total delay estimates, *GPS Solutions*, 20, 187, doi:10.1007/s10291-014-0427-z, 2016.
- Bar-Sever, Y.E., Kroger, P.M. and Borjesson, J.A.: Estimating horizontal gradients of tropospheric path delay with a single  
5 GPS receiver. *Journal of Geophysical Research*, 103, B3, 5019–5035, doi:10.1029/97JB03534, 1998.
- Balidakis, K., Nilsson, T., Zus, F., Glaser, S., Heinkelmann, R., Deng, Z. and Schuh, H.: Estimating Integrated Water Vapor Trends From VLBI, GPS, and Numerical Weather Models: Sensitivity to Tropospheric Parameterization, *Journal of Geophysical Research: Atmospheres*, 123, 6356-6372, doi: 10.1029/2017JD028049, 2018.
- Bender, M., Dick, G., Ge, M., Deng, Z., Wickert, J., Kahle, H.-G., Raabe, A. and Tetzlaff, G.: Development of a GNSS water  
10 vapour tomography system using algebraic reconstruction techniques, *Advances in Space Research*, 47, 10, p. 1704-1720, 2011.
- Bender, M., Stephan, K., Schraff, C., Reich, H., Rhodin, A. and Potthast, R.: GPS Slant Delay Assimilation for Convective Scale NWP. Fifth International Symposium on Data Assimilation (ISDA), University of Reading, UK, July 18–22, 2016.
- Boehm, J., Niell, A., Tregoning, P. and Schuh, H.: Global mapping function (GMF): A new empirical mapping function based  
15 on numerical weather model data, *Geophysical Research Letters*, 33, 943–951, doi:10.1029/2005GL025546, 2006a.
- Boehm, J., Werl, B. and Schuh, H.: Troposphere mapping functions for GPS and very long baseline interferometry from European Centre for Medium-Range Weather Forecasts operational analysis data, *Journal of Geophysical Research*, 111, B02406, doi:10.1029/2005JB003629, 2006b.
- Boehm, J., Heinkelmann, R. and Schuh, H.: Short note: A global model of pressure and temperature for geodetic applications,  
20 *Journal of Geodesy*, 81, 679–683, doi:10.1007/s00190-007-0135-3, 2007.
- Brenot, H., Neméghaire, J., Delobbe, L., Clerbaux, N., Meutter, P., Deckmyn, A., Delcloo, A., Frappez, L. and Van Roozendael, M.: Preliminary signs of the initiation of deep convection by GNSS, *Atmospheric Chemistry and Physics*, 13, 5425–5449, doi:10.5194/acp-13-5425-2013, 2013.
- Chen, G. and Herring, T. A.: Effects of atmospheric azimuthal asymmetry on the analysis of space geodetic data, *Journal of*  
25 *Geophysical Research*, 102, 20489–20502, doi:10.1029/97JB01739, 1997.
- Dach, R., Lutz, S., Walser, P., and Fridez, P. (Eds.): *Bernese GNSS Software Version 5.2. User manual*, Astronomical Institute, University of Bern, Bern Open Publishing, 2015.
- Davis, J., Elgered, G., Niell, A. and Kuehn, K.: Ground-based measurement of gradients in the “wet” radio refractivity of air, *Radio Science*, 28, 1003-1018, 1993.

- Douša, J., Dick, G., Kačmařík, M., Brožková, R., Zus, F., Brenot, H., Stoycheva, A., Möller, G. and Kaplon, J.: Benchmark campaign and case study episode in central Europe for development and assessment of advanced GNSS tropospheric models and products, *Atmospheric Measurement Techniques*, 9, 2989–3008, doi:10.5194/amt-9-2989-2016, 2016.
- Douša, J., Václavovic, P. and Eliaš, M.: Tropospheric products of the second European GNSS reprocessing (1996-2014),  
5 *Atmospheric Measurement Techniques*, 10, 3589–3607, doi:10.5194/amt-10-3589-2017, 2017.
- Douša, J., Eliaš, M., Václavovic, P., Eben, K. and Krč, P. A two-stage tropospheric correction combining data from GNSS and numerical weather model, *GPS Solutions*, 22, 77, doi:10.1007/s10291-018-0742-x, 2018a.
- Douša, J., Václavovic, P., Zhao, L. and Kačmařík, M.: New Adaptable All-in-One Strategy for Estimating Advanced Tropospheric Parameters and Using Real-Time Orbits and Clocks, *Remote Sensing*, 10, 232, doi:10.3390/rs10020232, 2018b.
- 10 Flores, A., Ruffini, G. and Rius, A.: 4D tropospheric tomography using GPS slant wet delays, *Annales Geophysicae*, 18, 223–234, doi:10.1007/s00585-000-0223-7, 2000.
- Guerova, G., Bettems, J. M., Brockmann, E. and Matzler, C.: Assimilation of COST 716 Near-Real Time GPS data in the nonhydrostatic limited area model used at MeteoSwiss, *Meteorol. Atmos. Phys.*, 91, 149–164, doi:10.1007/s00703-005-0110-6, 2006.
- 15 Iwabuchi, T., Miyazaki, S., Heki, K., Naito, I. and Hatanaka, Y.: An impact of estimating tropospheric delay gradients on tropospheric delay estimations in the summer using the Japanese nationwide GPS array, *Journal of Geophysical Research*, 108, D10, 4315, doi:10.1029/2002JD002214, 2003.
- Järvinen, H., Eresmaa, R., Vedel, H., Salonen, K., Niemelä, S. and de Vries, J.: A variational data assimilation system for ground-based GPS slant delays, *Q. J. R. Meteorol. Soc.*, 133, 969–980, doi:10.1002/qj.79, 2007.
- 20 Kačmařík, M.: Retrieving of GNSS Tropospheric Delays from RTKLIB in Real-Time and Post-processing Mode, In *Lecture Notes in Geoinformation and Cartography, Proceedings of GIS Ostrava 2017*, Ivan, I., Horák, J., Inspektor, T., Springer, Cham, doi:10.1007/978-3-319-61297-3\_13, 2018.
- Kawabata, T., Shoji, Y., Seko, H. and Saito, K.: A Numerical Study on a Mesoscale Convective System over a Subtropical Island with 4D-Var Assimilation of GPS Slant Total Delays, *Journal of the Meteorological Society of Japan*, 91, 705–721,  
25 doi:10.2151/jmsj.2013-510, 2013.
- Li, X., Zus, F., Lu, C., Ning, T., Dick, G., Ge, M., Wickert, J. and Schuh, H.: Retrieving high-resolution tropospheric gradients from multiconstellation GNSS observations, *Geophysical Research Letters*, 42, 4173–4181, doi: 10.1002/2015GL063856, 2015.
- Meindl, M., Schaer, S., Hugentobler, U. and Beutler, G.: Tropospheric Gradient Estimation at CODE: Results from Global  
30 Solutions, *Journal of the Meteorological Society of Japan*, 82, 1B, 331-338, doi:10.2151/jmsj.2004.331, 2004.



- Morel, L., Pottiaux, E., Durand, F., Fund, F., Boniface, K., de Oliveira, P.S. and Van Baelen, J.: Validity and behaviour of tropospheric gradients estimated by GPS in Corsica, *Advances in Space Research*, 55, 135-149, doi:10.1016/j.asr.2014.10.004, 2015.
- Rothacher, M. and Beutler, G.: The role of GPS in the study of global change, *Physics and Chemistry of the Earth*, 23, 9-10, 5 doi:10.1016/S0079-1946(98)00143-8, 1998.
- Saastamoinen, J.: Atmospheric Correction for the Troposphere and Stratosphere in Radio ranging of satellites, *Geophysical Monograph Series*, 15, 247-251, doi:10.1029/gm015p0247, 1972.
- Shoji, Y., Kunii, M. and Saito, K.: Assimilation of Nationwide and Global GPS PWV Data for a Heavy Rain Event on 28 July 2008 in Hokuriku and Kinki, Japan. *Scientific Online Letters on the Atmosphere*, 5, 45-48, doi:10.2151/sola.2009-012, 2009.
- 10 Skamarock, W.C., Klemp, J.B., Dudhia, J., Gill, D.O., Barker, D.M., Duda, M.G., Huang, X.Y., Wang, W. and Powers, J.G.: A description of the advanced research WRF version 3. NCAR tech. note NCAR/TN-475+STR, doi:10.5065/D68S4MVH, 2008.
- Václavovic, P., Douša, J. and Györi, G.: G-Nut software library - State of development and first results, *Acta Geodynamica et Geomaterialia*, 10, 4, 431-436, doi:10.13168/AGG.2013.0042, 2014.
- 15 Václavovic, P. and Douša, J.: Backward smoothing for precise GNSS applications, *Advances in Space Research*, 56, 8, 1627-1634, doi:10.1016/j.asr.2015.07.020, 2015.
- Vedel, H. and Huang, X.: Impact of Ground Based GPS Data on Numerical Weather Prediction, *Journal of the Meteorological Society of Japan*, 82, 459-472, doi:10.2151/jmsj.2004.459, 2004.
- Walpersdorf, A., E. Calais, J. Haase, L. Eymard, M. Desbois and H. Vedel, Atmospheric gradients estimated by GPS compared 20 to a high resolution numerical weather prediction (NWP) model, *Physics and Chemistry of the Earth, Part A: Solid Earth and Geodesy*, 26 (3), 147-152, doi:10.1016/S1464-1895(01)00038-2, 2002.
- Zhou, F., Li, X., Li, W., Chen, W., Dong, D., Wickert, J. and Schuh, H.: The Impact of Estimating High-Resolution Tropospheric Gradients on Multi-GNSS Precise Positioning, *Sensors*, 17, 756, doi:10.3390/s17040756, 2017.
- Zumberge, J. F., Heflin, M. B., Jefferson, D. C., Watkins, M. M. and Webb, F. H.: Precise point positioning for the efficient 25 and robust analysis of GPS data from large networks, *Journal of Geophysical Research*, 102, 5005-5017, doi:10.1029/96JB03860, 1997.
- Zus, F., Bender, M., Deng, Z., Dick, G., Heise, S., Shang-Guan, M. and Wickert, J.: A methodology to compute GPS slant total delays in a numerical weather model, *Radio Science*, 47, RS2018, doi:10.1029/2011RS004853, 2012.
- Zus, F., Dick, G., Heise, S. and Wickert, J.: A forward operator and its adjoint for GPS slant total delays, *Radio Science*, 50, 30 393-405, doi: 10.1002/2014RS005584, 2015.



Zus, F., Douša, J., Kačmařík, M., Václavovic, P., Dick, G. and Wickert, J.: Estimating the Impact of Global Navigation Satellite System Horizontal Delay Gradients in Variational Data Assimilation, *Remote Sensing*, 11, 41, doi:10.3390/rs11010041, 2019.