

Interactive comment on “Emergence of a localized total electron content enhancement during the G4 geomagnetic storm of September 8, 2017” by Carlos Sotomayor-Beltran

C. Sotomayor-Beltran

carlos.sotomayor20@gmail.com

Received and published: 13 July 2018

Due to some unknown reasons the x tick labels in Figure 1 and the North(N), South(S), West(W), and East(E) symbols in the maps of Figures 2 and 4 are missing. Thus, here I am uploading Figures 1, 2, and 4 to show the details that are missed.

Interactive comment on Ann. Geophys. Discuss., <https://doi.org/10.5194/angeo-2018-83>, 2018.

[Printer-friendly version](#)

[Discussion paper](#)



Interactive
comment

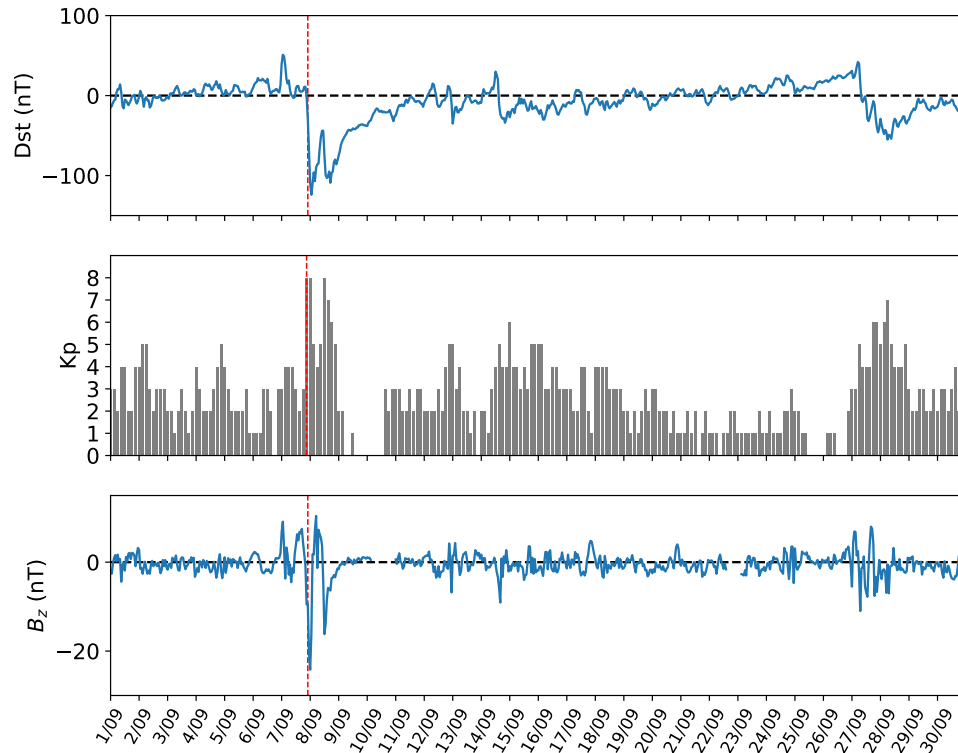


Fig. 1. Figure 1 in the manuscript

[Printer-friendly version](#)

[Discussion paper](#)



Interactive
comment

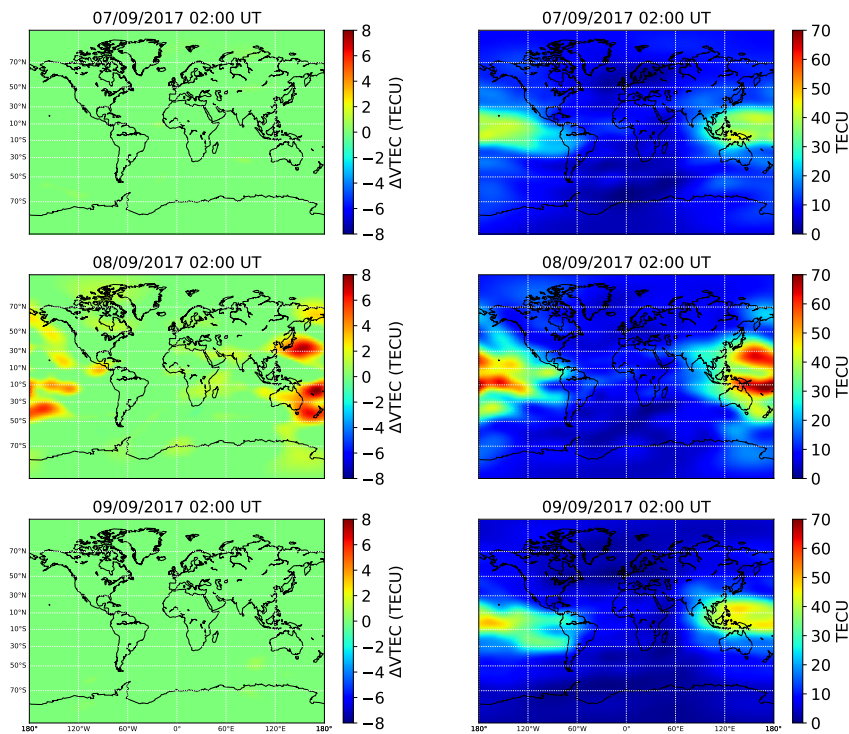


Fig. 2. Figure 2 in the manuscript

Printer-friendly version

Discussion paper



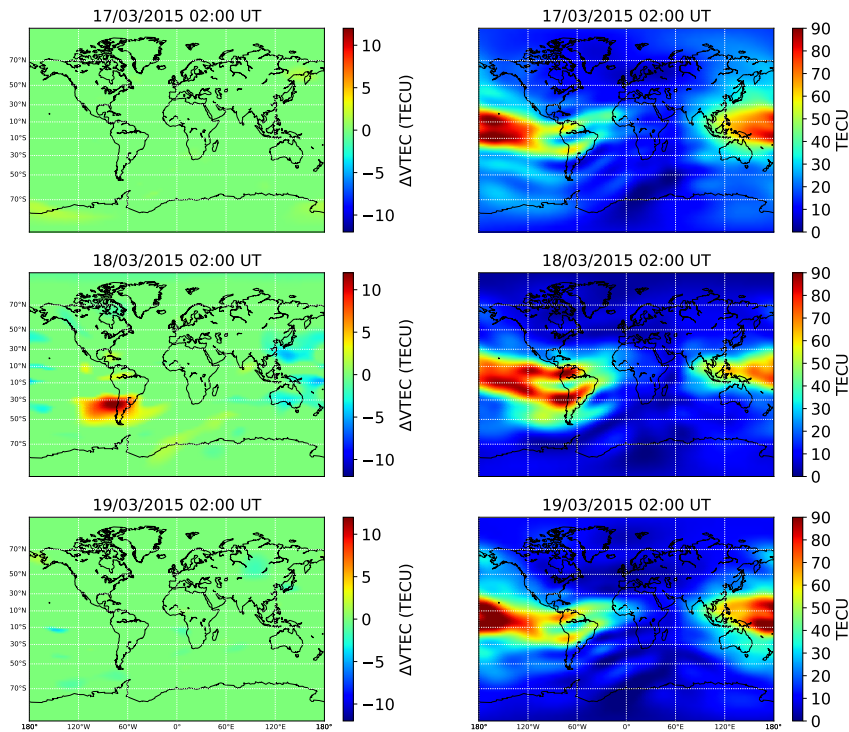


Fig. 3. Figure 4 in the manuscript

Printer-friendly version

Discussion paper

