

Response to Reviewer #1

We thank the Reviewer who appears to agree with the significance of our results and comments our work as suitable for publication as it is.

Response to Reviewer #2

We thank the Reviewer who appears to agree with the significance of our results and comments our work as suitable for publication after a more detailed analysis of confutation. In the revised version all her/his suggestions have been considered, namely:

Main points

- “What about analysing a close but different region, in order to make an objective comparison? “
My previous request was/is fundamental because we need a confutation case to establish that what is seen on 4 April was only occurring above L'Aquila and not elsewhere.

We added here (and not in the paper, where we added few sentences about it) the figures of a close but different region analysis for both the electric (right panels) and magnetic field (left panels) components.

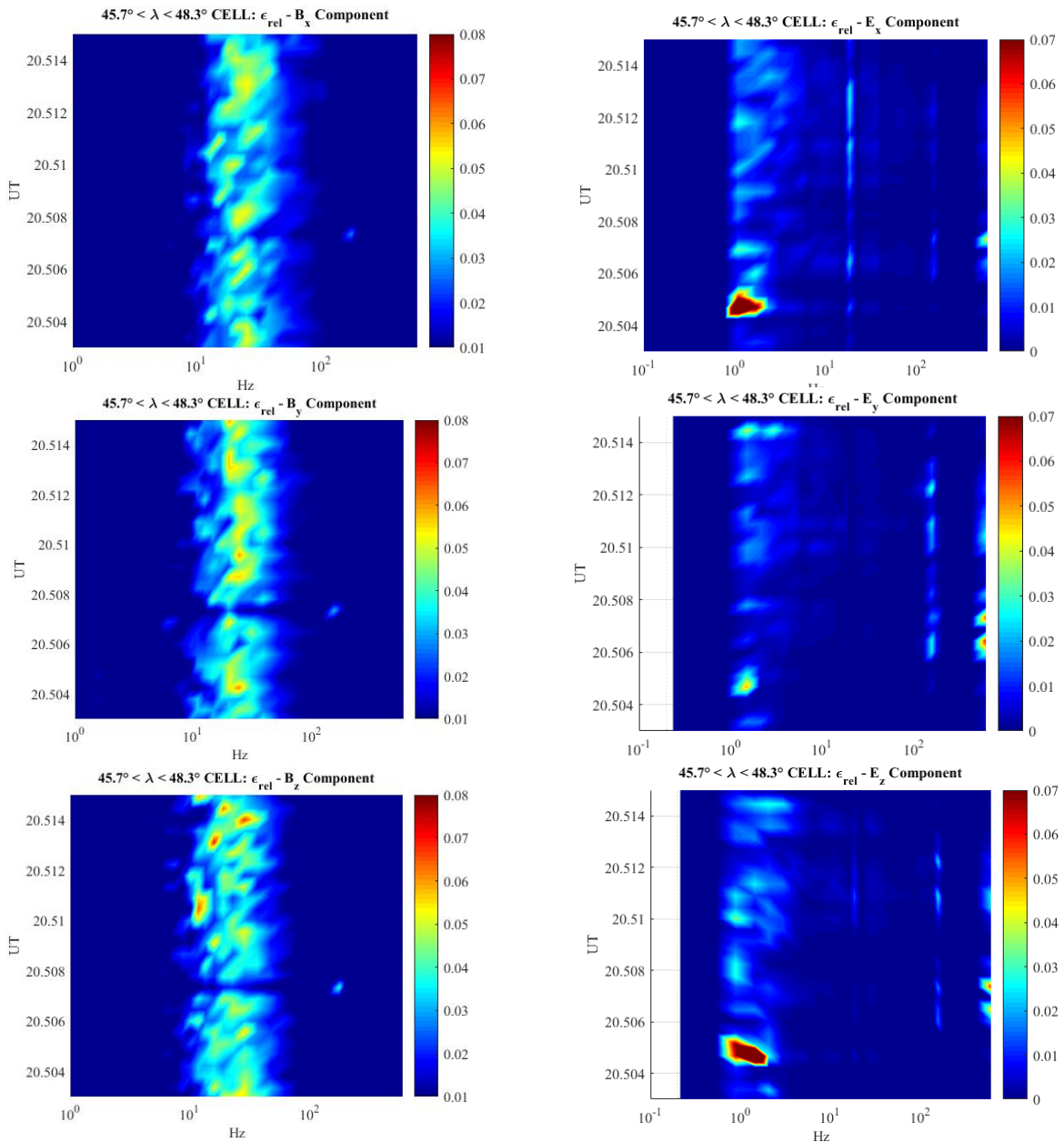
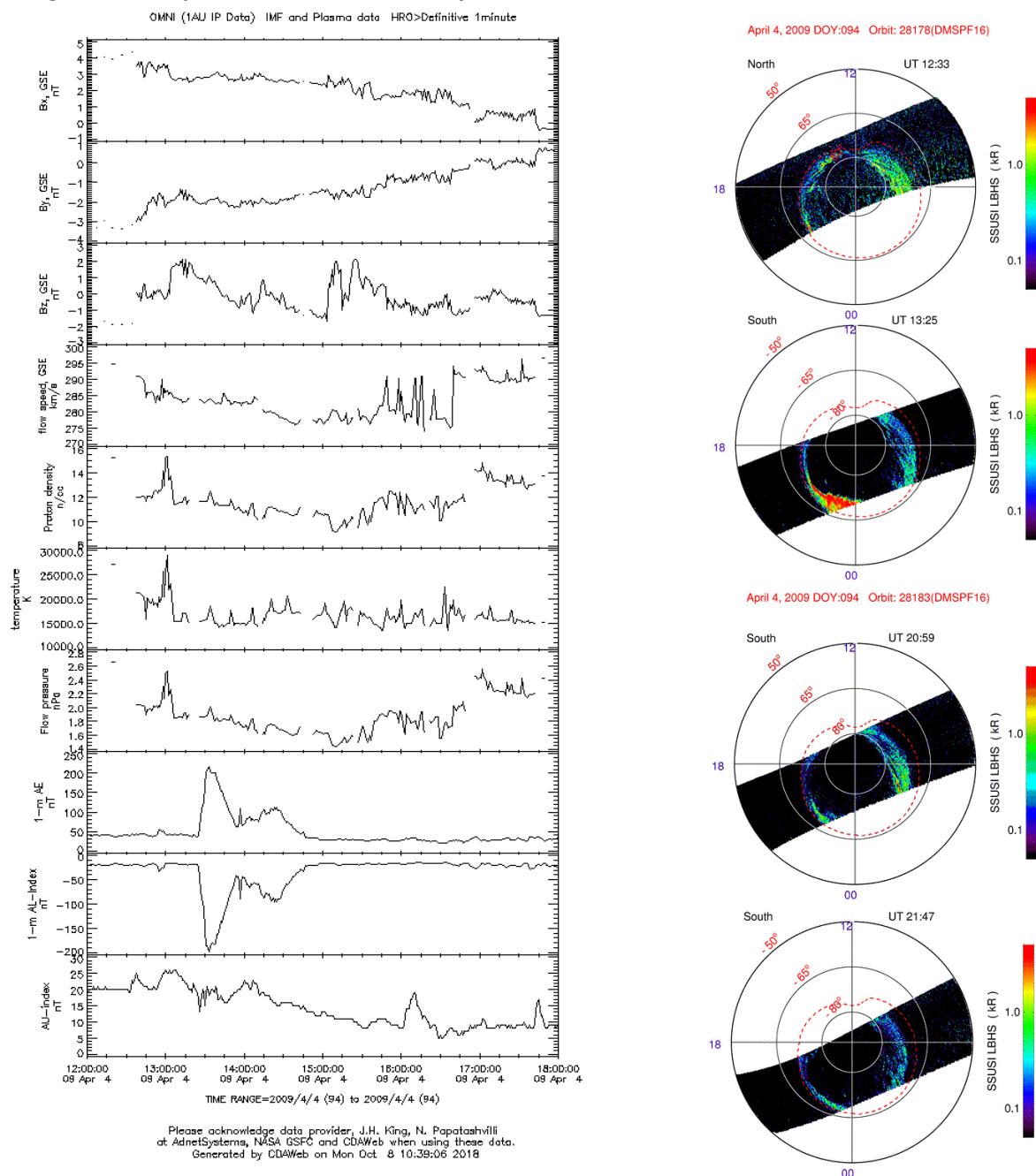


Figure 1. Left panels shows the ϵ_{rel} (I) vs. time and frequency for the three components of the magnetic field; right panels shows the ϵ_{rel} (I) vs. time and frequency for the three components of the electric field.

The latitudinal range of the region is $45.7^{\circ} < \lambda < 48.3^{\circ}$, that corresponds to the closest L'Aquila Cell analysed in the manuscript. As the reviewer can see, there is no anomaly centred at frequency of 333Hz as found above L'Aquila. In addition, the analysis of the cell centred at lower latitudes than L'Aquila (not shown) confirmed the same behaviour. So we are confident that what is seen on 4 April was only occurring above L'Aquila and not elsewhere.



To answer the reviewer comment, we added a figure here where we plot (on the left) the principal Solar Wind (SW) parameters together with the AE, AL and AU indices (as downloaded from NASA cdaweb site), and the map of Auroral Oval (AO) emission (in kilo-Röntgen) taken at UT 13:49 (the time of maximum excursion of AE index) and at UT 20:34 (the time of the DEMETER orbit analysed over L'Aquila). The SW observations shows that the sudden peak in the AE index is essentially due the flip of the Bz Interplanetary magnetic field component from positive to negative coupled with an greater than average SW density ($10\text{-}12\text{ amu/cm}^3$), probably related to a small flux-rope coming from the Sun. This particular structure coming from the Sun gave rise to a particle precipitation into the Ionosphere, as confirmed by the AL index peak whose behaviour follows closely the AE index. Anyway, the length of the SW perturbation is too small to produce a substorm affecting the low-middle latitudes (such as L'Aquila). Indeed, left panels, show that the borders of the AO (red dashed lines) is confined at high latitudes (between 65° and 75° - geomagnetic latitudes) either during the AE peak and during the DEMETER observations. Interestingly, during the AE peak, the southern hemisphere shows a clear substorm activity in the night sector as expected. While during the period analysed in the manuscript, there is not any particular auroral activity, as confirmed by the low AE index during those hours (http://wdc.kugi.kyoto-u.ac.jp/ae_provisional/200904/index_20090404.html). In addition, the L'Aquila geomagnetic trace (figure 7 of the manuscript) did not show any characteristics of substorm activity at that latitude for the entire day, such as Pi2 wave activity or geomagnetic bay ([Olson, J. V. (1999), Pi2 pulsations and substorm onsets: A review, J. Geophys. Res., 104(A8), 17499–17520, doi: 10.1029/1999JA900086.; Sastri, J H, Effect of magnetic storms and substorms on the low- latitude/ equatorial ionosphere, ILWS Workshop on Solar Influence on the Heliosphere and Earth's Environment, Goa, India, 19 - 24 Feb 2006, pp.361-368]). At our knowledge, to see the effects of substorms at L'Aquila latitudes, the AE index should overcome values of 600 nT [Sastri, J H, Effect of magnetic storms and substorms on the low- latitude/ equatorial ionosphere, ILWS Workshop on Solar Influence on the Heliosphere and Earth's Environment, Goa, India, 19 - 24 Feb 2006, pp.361-368; Piersanti et al, 2017, Comprehensive Analysis of the Geoeffective Solar Event of 21 June 2015: Effects on the Magnetosphere, Plasmasphere, and Ionosphere Systems, Solar Physics, 292:169 DOI 10.1007/s11207-017-1186-0]. Finally, figure 1 here shows that both the electric and magnetic field presented almost the same behaviour of the environmental background evaluated over L'Aquila cell (figure 4 of the manuscript), as expected for its close position.

A sentence about the presented discussion has been added to the manuscript in order to avoid the attribution of the anomaly to the electric field effects from auroral latitudes to middle latitudes.

Electromagnetic field observations by the DEMETER satellite in connection with the 2009 L'Aquila earthquake

Bertello Igor¹, Mirko Piersanti^{2,3}, Maurizio Candidi¹, Piero Diego¹, Pietro Ubertini¹

5 ¹INAF – Istituto di Astrofisica e Planetologia Spaziali, Roma, Italy

²INFN – University of Rome Tor-Vergata, Rome, Italy

³Consorzio Area di Ricerca in Astrofisica. L'Aquila, Italy

Correspondence to: mirko.piersanti@aquila.infn.it

Abstract. To define a background in the electromagnetic emissions above seismic regions, it is necessary to define the statistical distribution of the wave energy in absence of seismic activity and any other anomalous input (e.g. solar forcing). This paper presents a completely new method to determine both the environmental and instrumental background applied to the entire DEMETER satellite electric and magnetic field data over L'Aquila. Our technique is based on a new data analysis tool called ALIF (Adaptive Local Iterative Filtering, [Cicone et al. 2016 and 2017; Piersanti et al. 2017]). To evaluate the instrumental background, we performed a multiscale statistical analysis, in which the instantaneous relative energy (ϵ_{rel}), kurtosis and Shannon entropy was calculated. To estimate the environmental background, a map, divided into $1^\circ \times 1^\circ$ latitude/longitude cells, of the averaged relative energy ($\overline{\epsilon_{\text{rel}}}$) has been constructed, taking into account the geomagnetic activity conditions, the presence of seismic activity and the local time sector of the satellite orbit. Any distinct signal different (over a certain threshold) from both the instrumental and environmental backgrounds will be considered as a case event to be investigated. Interestingly, on April 4, 2009, when DEMETER flew exactly over L'Aquila at UT=20:29, an anomalous signal was observed at 333 Hz on both the electric and magnetic field data, whose characteristics seem to be related to pre-seismic activity.

1 Introduction

The nature of the Earth's interior, in terms of the dynamics of the crust, mantle and core, can be investigated through extended ground-based and space observations [Bell, 1982; Hayakawa and Molchanov, 2002; Pulinets and Boyarchuk, 2004; De Santis et al., 2015]. In the same way, it is possible to inquire the natural or anthropogenic origin of the electromagnetic emissions (EME) using measurements in the near Earth space [Parrot and Zaslavski, 1996, Buzzi, 2006]. In addition, several works [Parrot, 1995; Parrot and Zaslavski, 1996; Buzzi, 2006] remarked that both EMEs of anthropogenic (such as, HF broadcasting stations, VLF transmitters, and so on), and of natural (i.e. Earth surface) origin can influence the dynamics and the composition of the ionosphere-magnetosphere region [Parrot, 1995; Parrot and Zaslavski, 1996]. Taking into account that extreme reliability is needed to call for preseismic phenomena, a characteristic background for the regions on Earth where we want to detect the effects of earthquake related EME should be available. *In the interim*, the comprehensive study of both magnetospheric and ionospheric disturbances driven by ground preseismic EME waves have to be carried on. In this context,

aseismic fault creep and EME waves are expected to be the principal mechanical and electromagnetic earthquake precursors, respectively [Buzzi, 2006 and reference therein]. Parrot [1995] and Parrot and Zaslavski [1996] achieved the first promising result analysing rare EME waves observations over the ionosphere-magnetosphere region. In their studies, they first discriminated between internal and external component of the geomagnetic field and, then, they gave an efficient measure of the electric field, the plasma temperature and density of the ionosphere. Despite several theoretical models have been developed, the physical mechanisms leading to the observation of these effect both at ground and in space are yet largely unexplained. Namely, it remains to be understood: the genesis of EME wave over the focal area (especially soon before a seismic event, if any); its propagation through lithospheric layers characterized by fixed vertical conductivity; its access into both neutral atmosphere and ionosphere; its arrival into the magnetosphere and its relative interaction. It is worth noticing that, when a EME wave propagates through both the ionosphere and magnetosphere, the medium have to be considered dispersive, too [Chen, 1977]. Recently, Perrone et al. [2018] analysed Ionosonde data and crustal earthquakes with magnitude $M \geq 6.0$ observed in Greece during the 2003–2015 to check if the relationships obtained between precursory ionospheric anomalies and earthquakes in Japan and central Italy are also valid for Greek earthquakes. They identified the ionospheric anomalies as observed variations of the sporadic E-layer parameters ($h'Es$, f_oEs) and f_oF2 at the ionospheric station of Athens and found similar corresponding empirical relationships between the seismoionospheric disturbances and the earthquake magnitude and the epicentral distance. Moreover, the large lead times found for the ionospheric anomalies occurrence seems to confirm a rather long earthquake preparation period.

The search for ionospheric disturbances associated with earthquakes relies on thorough statistical studies to disentangle seismic effects from the variations induced by the physical processes that control the ionosphere dynamic and natural emissions. Several studies have been performed, in the frame of the DEMETER (Detection of Electro-Magnetic Emissions Transmitted from Earthquake Regions) mission, and one of them has shown a decrease of the ELF wave intensity in the frequency range between 1 and 2 kHz a few hours before the shock [Parrot et al., 2006; Piša et al., 2012 and 2013; Zhang et al., 2012; Walker et al., 2013]. Němec et al. [2008], built a statistical map of electromagnetic wave intensity obtained from DEMETER satellite ICE and IMSC data available at that time (2004-2007). Then, they estimated the probability of occurrence during a seismic event of signals with higher intensity with respect to the background level defined by the map. Their study was the first attempt to generate a background map in the electromagnetic emission above seismic regions for the determination of the statistical distribution of the wave energy in absence of seismic activity.

The present paper uses a completely new method to determine both the environmental and instrumental background in the electromagnetic emission above seismic regions by using the DEMETER satellite electric and magnetic field observations. This algorithm is based on a new data analysis technique called ALIF (Adaptive Local Iterative Filtering, [Cicone et al. 2016 and 2017; Piersanti et al. 2017]) and through a multiscale statistical analysis of the electromagnetic observations. The results obtained with this technique allowed the construction of an electromagnetic energy background map over L'Aquila seismic region from 2004 to 2011. In addition, on April 4, 2009, two days before the 6.3 Mw earthquake [USGS Earthquake

catalogue], when DEMETER flew exactly over L'Aquila at UT=20:29, an anomalous signal with respect to the background was observed.

2. Data and Methods

2.1 Demeter data

In our study, we used the data from the French satellite DEMETER, launched in 2004 on a sun-synchronous orbit at about 700km of altitude. The orbits of the satellite had an inclination of 98° and a local time of 10.30 on the day-side and 22.30 on the night-side. The instruments were operational at geomagnetic latitudes between -65° to $+65^\circ$ thus providing a good coverage of the Earth's seismic zones [Parrot et al., 2005]. The data from the electric field experiment ICE [Berthelier et al., 2005] and the magnetic field experiment IMSC [Parrot et al., 2005] were used in order to detect any electromagnetic waves. Among the 4 available DEMETER channels we selected the ELF band, the only one which provides the waveform of the three components of the fields. The ELF specification is a data range in frequency from 15 Hz to 1 kHz, with a sample rate of 2.5kHz. Due to the high data transfer resources required, the ELF acquisition is operational only in 'burst mode', so data are available only in a fraction of the entire orbit (see Figure 1). The DEMETER mission lasted from 2004 to March 2011, so we have a large dataset of almost 7 years of the satellite observations, altogether representing 71730 half-orbits (35865 in the day-side and 35865 in the night-side). Within the entire available dataset, we selected the orbits with ELF data that covered a squared area of $1^\circ \times 1^\circ$ (latitude and longitude) centred over L'Aquila geographic coordinate.

2.2 Adaptive local Iterative Filtering (ALIF)

The algorithm for the evaluation of both environmental and instrumental background in the electromagnetic emission above seismic regions is based on a recent data analysis technique called ALIF, developed by Cicone et al. [2016] and Piersanti et al. [2017]. ALIF is able, through a time-frequency analysis, to identify and quantify the variations across different scales for non—stationary signals due to the complexity and non-linearity of the system that generated them. The reason for using this technique is that, unlike typical data analysis methods, such as Fast Fourier transform, Wavelet and so on, ALIF does not suffer for both limited resolution [Cohen, 2001], and interferences in the time-frequency domain [Flandrin, 1998]. Thus, ALIF does not require any further processing of the representation. The key idea behind this method, very similar to the Empirical mode decomposition (EMD, Huang et al. [1998]), is a “divide et impera” approach. In fact, ALIF first decomposes a signal into several functions oscillating around zero and characterized by frequencies variable with time (Intrinsic Mode Functions - IMFs). Then, for each IMF, it performs a time-analysis. The great difference with EMD is that ALIF has a strong mathematical structure which guarantees the convergence and stability of the algorithm, which in turn guarantee the physical significance of the decomposition [Piersanti et al., 2017].

2.3 Multiscale statistical analysis and Standardized Mean (SM) test.

In order to evaluate the instrumental and environmental background of a signal $s(t)$ (such as the magnetic and electric field observations), we study its multiscale properties. To accomplish this task, we first use ALIF to decompose $s(t)$ into functions $IMF_\ell(t)$, characterized by a peculiar scale of variability ℓ [Wernik, 1997], so that:

$$s(t) = \sum_{\ell=1}^m IMF_\ell(t) + r(t)$$

- 5 where $r(t)$ is the residue of the decomposition. The connection between each IMF and the scale of variability ℓ of $s(t)$ has been analyzed by using the Flandrin [1998] technique: A dataset characterized by an evident scale separation can be decomposed into two contributions:

$$s(t) = s_0(t) + \delta s(t)$$

where $s_0(t)$ is named baseline and $\delta s(t)$ represents the variations around the baseline. To identify $\delta s(t)$, we applied the method proposed by Alberti et al. [2016], by defining $\delta s(t)$ as the reconstruction of a subset s_1 of $k < m$ modes,

10
$$\delta s(t) = \sum_{\ell=1}^k IMF_\ell(t) \quad \text{Eq. 1}$$

characterized by a standardized mean (i.e. the mean divided by the standard deviation) $SM \approx 0$ and by IMF fluctuating at higher frequency.

- Figure 2 shows an example of the application of the SM test to the DEMETER magnetic field observations (upper panel) over L'Aquila ($\lambda=42.334^\circ$, $\varphi=13.334^\circ$; LT=UT+1) on February 11, 2009 from 9:33 to 9:37 UT. The lower panel shows the SM test results. It can be easily seen that IMFs from 1 to 30 represents the fluctuating part of the signal (δBy), while IMFs from 31 to 82 are the baseline (By_0). To distinguish between instrumental origin fluctuations and real signal, a multiscale statistical analysis is needed. For the different scales ℓ s, we considered the statistics of the values $IMF_\ell(t)$. This technique, called multiscale statistical analysis, calculates and studies the second (the variance $\sigma(\ell)$), the third (the skewness $Sk(\ell)$) and the fourth (the kurtosis excess $K_{ex}(\ell)=K(\ell)-3$) moment of the probability distribution $p(IMF_\ell(t))$ of $IMF_\ell(t)$, and the relative energy ϵ_{rel} , and the Shannon information entropy $I(\ell)$, respectively defined as:
- 20

$$\epsilon_{rel}(\ell) = \frac{\int_{\ell} |IMF_\ell(t)|^2 dt}{\int_{\ell} |s(t)|^2 dt}. \quad \text{Eq. 2}$$

$$I(\ell) = -\sum_{\{IMF_\ell\}} p(IMF_\ell(t)) \cdot \log_2 p(IMF_\ell(t)). \quad \text{Eq. 3}$$

- These parameters measures the variability of the statistics of the signal in function of the scale considered [Strumik & Macek, 2008]. Namely: $K_{ex}(\ell)$ indicates how the different ℓ 's are rich of rare fluctuations [Frisch, 1995]; ϵ_{rel} measure how “energetically strong” the ℓ component is in the Eq. 1. $I(\ell)$ measures the “degree of randomness” of each $IMF_\ell(t)$
- 25

component of the signal. In our case the scale ℓ corresponds to the peculiar frequency of each IMF of both magnetic and electric field observations.

2.4 Instrumental background

We define $\text{IMF}_\ell(t)$ to have an instrumental origin if two conditions are at the same time satisfied:

1. The SM test evaluates the $\text{IMF}_\ell(t)$ as a fluctuation;
2. $K_{\text{ex}}(\text{IMF}_\ell(t))$ is almost null and correspondingly $I(\text{IMF}_\ell(t))$ presents a relative maximum.

Indeed, an $\text{IMF}_\ell(t)$ that satisfies these two conditions can be represented as a Gaussian fluctuation characterized by a high “degree of randomness”. Thus, it can be identified as instrumental noise. Figure 3 shows an example of a multiscale statistical analysis of the By component of DEMETER satellite for the same period of Figure 2. Figure 3a shows the ϵ_{rel} behaviour as a function of the scale ℓ (i.e. the frequency). Two energy peaks, at 20 Hz (blue dashed line) and 333 Hz (green dashed line), are clearly visible. Scales lower than 3 Hz have almost null energy (red dashed line), have $K_{\text{ex}}(\ell) \sim 0$ and show the highest values of $I(\ell)$. The IMFs corresponding to these scales could be attributed to instrumental noise. Anyway, a more accurate analysis on each IMFs in the interval $\ell < 3$ Hz will be done in the next sections. On the other hand, the IMF related to 20 Hz are not of instrumental origin because, despite the almost null value of K_{ex} , the Shannon entropy shows a concave-upward. In fact, $\ell \cong 20$ Hz is one of the peaks of Shumann Resonance in the extremely low frequency (ELF) portion of the Earth's electromagnetic field spectrum generated and excited by lightning discharges in the cavity formed by the Earth's surface and the ionosphere [Barr et al., 2000 and reference therein]. A similar situation is obtained for $\ell = 333$ Hz. In fact, the relative $K_{\text{ex}}(\ell) = 3$ (Figure 3b) and $I(\ell)$ (Figure 3c) show a concave-upward. Thus, the signal associated to 333 Hz is not originated by instrumental noise.

By the use of those criteria, we can identify all the $n < m$ IMFs(ℓ) originated by instrumental noise. As a consequence, the instrumental background can be defined as:

$$R_b = \sum_{\ell=1}^n \text{IMF}(\ell)$$

where R_b is the signal of instrumental origin.

2.5 Environmental background

The environmental background has been evaluated through the following steps:

1. We divided the entire electric and magnetic DEMETER dataset into 2 subsets depending on the local time sector of the satellite orbit (i.e. dayside or nightside). Each subset has been again divided into 2 more subsets characterized by different seismic conditions. The first one (M_L) is defined for low seismic activity ($M \leq 3$, M being the earthquake

magnitude) and the second (M_H) for high seismic activity ($M>3$). This procedure is crucial to take into account the nature of the earthquake and the different ionospheric response.

2. As in Perrone et al. [2018], each M_L and M_H subsets were again divided into 3 subsets according to the level of geomagnetic activity. This division is important to take into account possible signals associated with geomagnetic activity. To accomplish this task, we used either the Sym-H index and the AE index. The first one is the ring current activity index, which takes into account possible low latitudes geomagnetic activity [referenza]. The second is auroral electrojet activity index, which takes into account possible high latitudes geomagnetic activity induced by the loading-unloading process from the magnetotail current [referenza]. The 3 subsets correspond to three intervals, that are: $I_{k,1}$: Sym-H= [10 nT, -10 nT) and AE<100 nT; $I_{k,2}$: Sym-H= [-10 nT, -80 nT) and AE<150 nT; $I_{k,3}$: Sym-H≤-80 nT and AE≥150 nT. $I_{k,1}$, $I_{k,2}$ and $I_{k,3}$ correspond to quiet, moderate and high geomagnetic activity. Since both Sym-H and AE indices are 1 minute resolution, to assign each orbit to the correct “geomagnetic activity” interval, we considered their behaviour 24 hours before the event under analysis.

As a consequence, we finally obtained a total of 12 intervals (hereafter $C_{M,K,L}$, where the subscripts M, K and L correspond to the magnitude interval, geomagnetic activity interval and local time interval of the satellite orbit, respectively).

3. The world map has been divided into $1^\circ \times 1^\circ$ latitude/longitude cells. Each $C_{M,K,L}$ will be decomposed by ALIF. For each cell, after the removal of instrumental noise by applying the technique described above, a time – frequency ϵ_{rel} will be calculated. Then, a mean $\overline{\epsilon_{rel}}$ will be calculated and stored for each frequency scale. Averaging has been applied only if the ratio $R_\epsilon(\ell) = \frac{\epsilon_{rel}(\ell)}{\overline{\epsilon_{rel}}(\ell)} = 1 \pm 3\sigma(\ell)$, where $\sigma(\ell)$ is the standard deviation of $\overline{\epsilon_{rel}}$ evaluated at the single frequency scale ℓ .

For each $C_{M,K,L}$, we defined $\overline{\epsilon_{rel}}(\ell)$ as the environmental background. This kind of background gives a representation of both the magnetospheric and ionospheric electric and magnetic fields activity directly driven by the geoelectric and geomagnetic field variations induced by solar forcing. As a consequence, any distinct signal (over the threshold $1 \pm 3\sigma(\ell)$) could be reasonably studied as an anomalous event.

Figure 4 shows the background components of both the electric (left panels) and the magnetic (right panels) fields over L’Aquila cell ($C_{M,K,L}$: 1° in latitude and 1° in longitude centred at L’Aquila geographic coordinate) with $M<3$, $-10 \text{ nT}<\text{Sym-H}<0 \text{ nT}$ and $\text{AE}<100 \text{ nT}$, $L=\text{nightside}$, which we defined to be the quiet background condition. For the evaluation we used 72 satellite orbits. The results are presented in the satellite reference frame¹ [Berthelier et al., 2005].

3. April 4, 2009 case event.

¹ x is directed along the Nadir direction; z is directed along the satellite velocity vector; y is perpendicular to the x-z plane

Figure 5 shows the characteristics of DEMETER orbit (upper panel) occurred on April 4, 2009 (two days before a 6.3 magnitude earthquake), in terms of latitude and longitude position, and the relative electric (left panels) and magnetic (right panels) field observations. This orbit was identified as anomalous by our technique. In fact, Figure 6, exhibiting ϵ_{rel} for both the electric and magnetic field components, shows an anomalous signal (s^*) at frequency $f^*=333$ Hz, which is not present in quiet conditions (see Figure 4). It is worth noting that the time of f^* onset corresponds exactly to DEMETER passage through L'Aquila geographic footprint. s^* has a peculiar e.m. polarization, characterized by a magnetic field oscillating principally in the y-z plane, and an electric field (less clear situation) oscillating principally along the x-y plane (in the satellite reference frame).

Since ALIF extracts both the electric and magnetic field wave forms at each frequency, we were able to calculate the instantaneous phase difference between the two signals, resulting in $\sim 90^\circ$. This condition allowed the evaluation of the Poynting vector $\vec{S} = \vec{E} \times \vec{B}$, showing the following characteristic angles with respect to the satellite coordinate system: $\vartheta_1 = 167.1^\circ$ and $\varphi_1 = 15.4^\circ$ (ϑ and φ being the angles between \vec{S} and x, and \vec{S} and z, respectively). The direction of \vec{S} confirms that s^* is directed toward the satellite, coming from ground.

Interestingly, the same peculiar frequency, f^* , was found on February 11, 2009, with lower ($\sim 60\%$) ϵ_{rel} (see Figure 2) and comparable polarization in both magnetic and electric field (not shown). Also for this case event, the evaluated direction of \vec{S} confirms a signal coming from ground ($\vartheta_2 = 154.6^\circ$ and $\varphi_2 = 6.4^\circ$).

4. Discussion and conclusions.

The correct identification of a background in the e.m. emission over seismic regions has a crucial role for the detection of possible signals related to earthquake or pre-earthquake activity. The algorithm presented here represents a new and very efficient technique to discriminate among instrumental, environmental and external source signals from satellite observations. The efficiency of ALIF for both non-linear and non-stationary signal analysis, and peculiar frequency onset identification has been proved in several works [i.e., Piersanti and Villante, 2016; Alberti et al., 2016 and reference therein]. Anyway, its possible application to identify correctly the instrumental origin noise has never been presented before. Here, we showed that the coupling between ALIF and MSA represents a powerful tool to identify and remove noise from signal. In fact, our method was able to determine all the noise frequencies declared in electric and magnetic field experiment of DEMETER satellite [Lagoutte et al., 2005], such as the 1 Hz in the E field (see Figure 4). This signal is an effect of the instrumental disturbance, i.e. the sweeping voltage of the Langmuir Probe [Lagoutte et al., 2005]. Concerning the continuous 20 Hz signal detected in the magnetic field observations, we speculated that it can be attributed to one of the peaks of Shumann Resonance in the extremely low frequency (ELF) portion of the Earth's electromagnetic field spectrum generated and excited by lightning discharges in the cavity formed by the Earth's surface and the ionosphere [Barr et al., 2000 and reference therein]. Anyway, Lagoutte et al. [2005] in their DEMETER satellite user guide manual certificated the ~ 20 Hz as a BANT (Boîtier Analogique et Numérique de Traitement) noise.

On the other hand, this paper presents a useful method for the correct selection of anomalous signals with respect to the evaluated background. The choice of using the ratio $R_e(\ell)$ was to take into account possible anomalous energy enhancements as well as new signal onset. In addition, the choice of a threshold equal to 3σ makes the anomaly selection as strong as possible and should exclude possible positive false. Anyway, at this stage, a visual inspection of each anomalous signal detected is needed. Last but not least, an analysis of the geomagnetic indices behaviour associated with possible e.m. anomaly detected by our method is crucial. In fact, it is worth remarking that the external origin perturbations, in terms of solar activity, represent the principal disturbance of both the Earth's ionospheric electric and magnetospheric fields [Vellante et al., 2014; Piersanti et al., 2017a and reference therein].

In this context, the 333 Hz component, appearing when the DEMETER flew exactly over L'Aquila (Figure 6), is not visible in the corresponding background (in terms of Kp and M indices - Figure 4) and then may be an interesting anomaly. In fact, the April 4, 2009 was characterized by a very low geomagnetic activity, since the Sym-H index was between 8 and 10 nT, and AE index was less than 95 nT. This confirms that the April 4, 2009 was a Solar Quiet (Sq) day [Matsushida and Maeda, 1965; Chulliat et al., 2005]. Sq is caused by the concurring contribution of a current systems flowing in the so called ionospheric dynamo region and of the induced telluric currents in the Earth's upper mantle. Briefly, their interaction gives rise to two pairs of vortices: two in the sunlit hemisphere and the other two in the dark one [Richmond et al., 1976; Shinbori et al., 2014]. This is confirmed by the behaviour of the geomagnetic field observation at L'Aquila ground station (Figure 7), which presents the typical Sq daily variation at middle/low latitude in April [De Michelis et al., 2010]. **In addition, the inspection of the solar wind conditions coupled with map of Auroral Oval emission from DMSP satellite taken at UT 20:34 (not shown), confirmed the absence of any disturbance of solar origin, such as substorm activity, that could affect the low-middle latitudes magnetic and electric fields. Indeed, L'Aquila geomagnetic trace (figure 7) did not show any Pi2 wave activity for the entire day [Olson, J. V., 1999; Piersanti et al., 2017a].** Moreover, no ELF perturbations are observed between 20:30 UT and 20:40 UT. As a consequence, we can reasonably assert that s^* cannot be related to any solar perturbation.

As a matter of fact, the relative Poynting vector \vec{S} indicates a wave propagating from ground to the ionosphere. The s^* peculiar polarization might be associated with a horizontal current system flowing at ground, switched on by an anomalous ground impedance generated by the fault-break. It is thought that the low frequency components (ULF/ELF) of seismo electro-magnetic emissions (SEME) waves generated by pre-seismic sources (such as local deformation of field, rock dislocation and micro-fracturing, gas emission, fluid diffusion, charged particle generation and motion, electro-kinetic, piezo-magnetic and piezoelectric effects, fair weather currents) are transmitted into the near-Earth space [Dobrovolsky, 1989; Teisseyre, 1997; Pulinets and Kirill, 2000; Sorokin, 2001]. During their propagation through the solid crust, the SEME waves characterized by lower period are attenuated. As a consequence, only low frequency waves (in the ULF/ELF band) can go over the Earth's crust and propagate through the ionosphere-magnetosphere system with moderate attenuation [Bortnik and Bleier, 2004]. Observations from Low-Earth-Orbit (LEO) satellite seems to confirm this scenario. In fact, pre-seismic variations of electric and magnetic fields and of ionospheric plasma temperature and density [Parrot, 1993;

Chmyrev, 1997, Buzzi, 2006] have been observed from a few minutes to several hours (2-6 hours) prior to Earthquakes of moderate or strong magnitude ($M > 4.0$). Unfortunately, no magnetotelluric measurements that could confirm or neglect our hypothesis, were available for the event under investigation. **Anyway, it is interesting to highlight that repeating the same analysis for cells further north and south than L'Aquila cell (not shown), no anomalous signal centred at 333 Hz was found. So, we are confident that what is seen on April 4 was only occurring above L'Aquila and not elsewhere.**

Interestingly, on February 11, 2009, a similar signal, characterized by lower ($\sim 60\%$) ϵ_{rel} and comparable polarization, was observed on both electric and magnetic field components. Despite the direction of \vec{S} confirms that also this signal comes from ground ($\theta_2 = 154.6^\circ$ and $\varphi_2 = 6.4^\circ$), nothing can be speculated to its physical causes in this case. In fact, first of all it is characterized by different solar activity conditions with Sym-H between 40 nT and 50 nT, and AE between 150 nT and 200 nT. Last but not least, the satellite orbit was diurnal. Hence, to be consistent with our cell division method, the February 11, 2009 cannot be compared neither to our quiet background nor to the April 4, 2009 case event. Anyway, its peculiar characteristics needs to be investigated in a companion paper containing a statistical approach.

The analysis of the April 4, 2009 event, showed that only through a multi-instrumental and multi-disciplinary approach, a reliable disentangle of the earthquake effects from changes due to the physical processes that govern the ionosphere dynamic and to natural EME can be obtained.

This work could be considered as a suggested analysis approach for the forthcoming scientific phase of the first CSES mission (launched on February, 2018, and still in the commissioning phase) aiming to reduce the lack of knowledge in the lithosphere-ionosphere coupling. As soon as further applications, performed on different seismic events, reaches the expected reliability, the proposed method could be used to compute the global background level (with 1 squared degree of resolution) for a direct real-time comparison of CSES in flight data.

Acknowledgments

The authors thank F. Capaccioni for useful scientific discussion and comments. The authors want to thank the CNES teams in charge of the DEMETER project and its in-flight operations and D. Lagoutte, J.Y. Brochot and S. Berthelin for their remarkable work at the DEMETER Science Mission Centre. The results presented in this paper rely on the data collected at L'Aquila. We thank INGV (Istituto Nazionale di Geofisica e Vulcanologia), for supporting its operation and INTERMAGNET for promoting high standards of magnetic observatory practice (www.intermagnet.org). Authors also thank the Italian Space Agency (ASI) for the financial support under the contract ASI "LIMADOU scienza" n° 2016-16-H0.

References

Alberti, T., Piersanti, M., Vecchio, A., De Michelis, P., Lepreti, F., Carbone, V., Primavera, L.: Identification of the different magnetic field contributions during a geomagnetic storm in magnetospheric and ground observations. *Ann. Geophys.* 34(11), 1069. doi: 10.5194/angeo-34-1069-2016, 2016.

- Barr, R., Llanwyn Jones, David; Rodger, C.J.: ELF and VLF radio waves. *J. Atm. Sol. Terr. Phys.* 62 (17–18): 1689–1718, Bibcode: 2000JASTP.62.1689B. doi:10.1016/S1364-6826(00)00121-8, 2000.
- Berthelier J. J., M. Godefroy, F. Leblanc, M. Malingre, M. Menvielle, D. Lagoutte, J.Y. Brochot, F. Colin, F. Elie, C. Legendre, P. Zamora, D. Benoist, Y. Chapuis, J. Artru, R. Pfaff: ICE, the electric field experiment on DEMETER, doi: 10.1016/j.pss.2005.10.016, 2005.
- 5 Bell P.M.: High electrical conductivity in upper mantle, *EOS*, Vol.63, Issue 36 769-769, doi: 10.1029/EO063i036p00769-01, 1982.
- Bortnik, J., and Bleier, T.: Full wave calculation of the source characteristics of seismogenic electromagnetic signals as observed at LEO satellite altitudes. AGU fall meeting, San Francisco, California, USA, 2004.
- 10 Buzzi, A., DEMETER satellite data analysis of seismo-electromagnetic signal, Univ. Rome, Roma III, Italy. Available at http://lpc2e.cnrs-orleans.fr/www_dls/thesis/buzzi/buzzi.pdf, 2007.
- Chen: “Introduction to plasma physics”, Plenum Press, N.Y. 1977.
- Chmyrev, V.: Small-scale plasma inhomogenetics and correlated ELF emissions in the ionosphere over an earthquake region. *J. Atm. Sol.-Terr. Phys.*, 59, 967-974, 1997.
- 15 Chulliat, A., Blanter, E., Le Mouel, J. L., and Shnirman, M.: On the seasonal asymmetry of the diurnal and semidiurnal geomagnetic variations, *J. Geophys. Res.*, 110, A05301, doi:10.1029/2004JA010551, 2005.
- Cicone, A., Liu, J., Zhou, H.: Adaptive local iterative filtering for signal decomposition and instantaneous frequency analysis, *App. Comp. Harm. Anal.*, 41(2), 384-411. doi:10.1016/j.acha.2016.03.001, 2016.
- Cicone, A., & Zhou, H., Multidimensional iterative filtering method for the decomposition of high-dimensional non-stationary signals, *Numerical Mathematics: Theory, Methods and Applications*, 10(2), 278–298. <https://doi.org/10.4208/nmtma.2017.s05>, 2017.
- 20 Cohen, L., *The Uncertainty Principle for the Short-Time Fourier Transform and Wavelet Transform*. In L. Debnath (Ed.) *Wavelet*, 2001.
- De Michelis, P., Tozzi, R., and Consolini, G.: Principal components’ features of mid-latitude geomagnetic daily variation, *Ann. Geophys.*, 28, 2213–2226, doi:10.5194/angeo-28-2213-2010, 2010.
- 25 De Santis, A., De Franceschi, G., Spogli, L., Perrone, L., Alfonsi, L., Qamili, E., Cianchini, G., Di Giovambattista, R., Salvi, S., Filippi, E., Pavón-Carrasco, F. J., Monna, S., Piscini, A., Battiston, R., Vitale, V., Picozza, P. G., Conti, L., Parrott, M., Pinçon, J.-L., Balasis, G., Tavani, M., Argan, A., Piano, G., Rainone, M. L., Liu, W., and Tao, D.: Geospace perturbations induced by the Earth: the state of the art and future trends, *Phys. Chem. Earth*, 85, 17–33, 2015.
- 30 Dobrovolsky, I.: Theory of electrokinetic effects occurring at the final stage in the preparation of a tectonic earthquake. *Phys. Earth Planet. Inter.* 57, 144-156, 1989.
- Flandrin, P.: *Time--frequency/time--scale analysis*. Vol. 10. Academic press, 1998.
- Hayakawa, M. and Molchanov, O. A.: *Seismo electromagnetic, lithospheric-atmospheric-ionospheric coupling*, Terra Science Publishing Co., Tokyo, 2002.

- Huang, N.E., Shen, Z., Long, S.R., Wu, M.C., Shih, H.H., Zheng, Q., Yen, N.C., Tung, C.C., Liu, H.H.: The empirical mode decomposition and the Hilbert spectrum for nonlinear and non-stationary time series analysis. *Proceedings of the Royal Society of London. Series A*, 454(1971),903-995, 1998.
- Lagoutte D., Berthelier J.J., Lebreton J.P., Parrot M. and Sauvaud J.A.: DEMETER Microsatellite DATA USER GUIDE, DMT-OP-7-CS-6124-LPC, 2005.
- Matsushita, S. and Maeda, H.: On the geomagnetic quiet daily variation field during the IGY, *J. Geophys. Res.*, 70, 2535–2558, 1965.
- Němec F., O. Santolik, M. Parrot, and J. J. Berthelier, Spacecraft observations of electromagnetic perturbations connected with seismic activity, *Geophys. Res. Lett.* doi:10.1029/2007GL032517, 2008.
- Olson, J. V., Pi2 pulsations and substorm onsets: A review, *J. Geophys. Res.*, 104(A8), 17499–17520, doi: 10.1029/1999JA900086, 1999.**
- Parrot, M.: High frequency seismo-electromagnetic effects. *Phy. of the Earth and Intpl Inter.* 77, 65-83, 1993.
- Parrot M., Molchanov O.: PHLR emissions observed on satellite, *J. Atm. Terr. Phys.* 57(5):493-505, doi: 10.1016/0021-9169(94)00077-2., 1995.
- Parrot M., Zaslavski Y.: Physical mechanisms of man-made influences on the magnetosphere, *Surv. Geophys.* 17(1):67-100, doi: 10.1007/BF01904475, 1996.
- Parrot M., Benoist D., Berthelier J. J., Blecki J. , Chapuis Y., Colin F., Elie F., Ferreau P., Lagoutte D., Lefeuvre F., Legendre C., Lévêque M., Pincon J.L., Poirier B., Seran H.-C., Zamora P.: The magnetic field experiment IMSC and its data processing onboard DEMETER: Scientific objectives, description and first results, *Plan. Space Scie.*, doi:10.1016/j.pss.2005.10.015, 2005.
- Parrot M. et al.: Examples of unusual ionospheric observations made by the DEMETER satellite over seismic regions, *Phys. Chem. Earth*, 2006.
- Perrone et al., Ionospheric anomalies detected by ionosonde and possibly related to crustal earthquakes in Greece, *Ann. Geophysicae*, 36, 361–371, 2018.
- Piersanti, M., Villante, U.: On the discrimination between magnetospheric and ionospheric contributions on the ground manifestation of sudden impulses. *J. Geophys. Res. Space* 121 (7), 6674. doi.org/10.1002/2015JA021666, 2016.
- Piersanti, M., Alberti, T., Bemporad, A., Berrilli, F., Bruno, R., Capparelli, V., Carbone, V., Cesaroni, C., Consolini, G., Cristaldi, A., Del Corpo, A., Del Moro, D., Di Matteo, S., Ermolli, I., Fineschi, S., Giannattasio, F., Giorgi, F., Giovannelli, L., Guglielmino, S.L., Laurenza, M., Lepreti, F., Marcucci, M.F., Martucci, M., Mergè, M., Pezzopane, M., Pietropaolo, E., Romano, P., Sparvoli, R., Spogli, L., Stangalini, M., Vecchio, A., Vellante, M., Villante, U., Zuccarello, F., Heilig, B., Reda, J., Lichtenberger, J.: Comprehensive Analysis of the Geoeffective Solar Event of 21 June 2015: Effects on the Magnetosphere, Plasmasphere, and Ionosphere Systems. *Sol. Phys.* 292, 11. doi.org/10.1007/s11207-017-1186-0, 2017a.
- Piersanti M., M. Materassi, A. Cicone, L. Spogli, H. Zhou and R. G. Ezquer: Adaptive Local Iterative Filtering: a promising technique for the analysis of non-stationary signals, *J. Geophys. Res.*, doi:10.1002/2017JA024153, 2017.

- Píša D., F. Němec, M. Parrot, O. Santolík: Attenuation of electromagnetic waves at the frequency ~1.7 kHz in the upper ionosphere observed by the DEMETER satellite in the vicinity of earthquakes, *Ann. Geophys.*, doi: 10.4401/ag-5276, 2012.
- Píša D., F. Němec, O. Santolík, M. Parrot, and M. Rycroft: Additional attenuation of natural VLF electromagnetic waves observed by the DEMETER spacecraft resulting from preseismic activity, *J. Geophys. Res.*, doi:10.1002/jgra.50469, 2013.
- 5 Pulinets, S., & Kirill, B.: *Ionospheric Precursors of Earthquakes*. Springer, 2004.
- Pulinets, S. A. and Boyarchuk, K. A.: *Ionospheric Precursors of Earthquakes*, Springer, Berlin, 2004.
- Richmond, A. D., Matsushita, S., and Tarpley, J. D.: On the production mechanism of electric currents and fields in the ionosphere. *J. Geophys. Res.*, 81, 547–555, doi:10.1029/JA081i004p00547, 1976.
- Shinbori A., Koyama, Y., Nose, M., Hori, T., Otsuka, Y., and Yatagai, A.: Long-term variation in the upper atmosphere as
 10 seen in the geomagnetic solar quiet daily variation, *Earth Plan. Space*, 66, 155–174, doi:10.1186/s40623-014-0155-1, 2014.
- Sorokin, V.: Electrodynamic model of the lower atmosphere and the ionosphere coupling. *J. Atmos. Sol. Terr. Phys.* 63, 1681-1691, 2001.
- Teisseyre, R.: Generation of electric field in an earthquake preparation zone. *Ann. Geophys.* 40, 297-304, 1997.
- Vellante, M., M. Piersanti, and E. Pietropaolo: Comparison of equatorial plasma mass densities deduced from field line
 15 resonances observed at ground for dipole and igrf models, *J. Geophys. Res-Space*, 119(4), 2623–2633, doi:10.1002/2013JA019568, 2014.
- Walker, SN, Kadirkamanathan, V and Pokhotelov, OA: Changes in the ultra-low frequency wave field during the precursor phase to the Sichuan earthquake: DEMETER observations. *Ann. Geophys.*, 31 (9). 1597 -1603. doi: 10.5194/angeo-31-1597-2013, 2013.
- 20 USGS Earthquake Catalog, Central Italy Event: <https://earthquake.usgs.gov/earthquakes/eventpage/usp000gvtu#executive>.
- Zhang X., X. Shen, M. Parrot, Z. Zeren, X. Ouyang, J. Liu, J. Qian, S. Zhao, and Y. Miao: Phenomena of electrostatic perturbations before strong earthquakes (2005–2010) observed on DEMETER, *Nat. Hazards Earth Syst. Sci.*, 12, 75–83, doi:10.5194/nhess-12-75-2012, 2012.

25

30

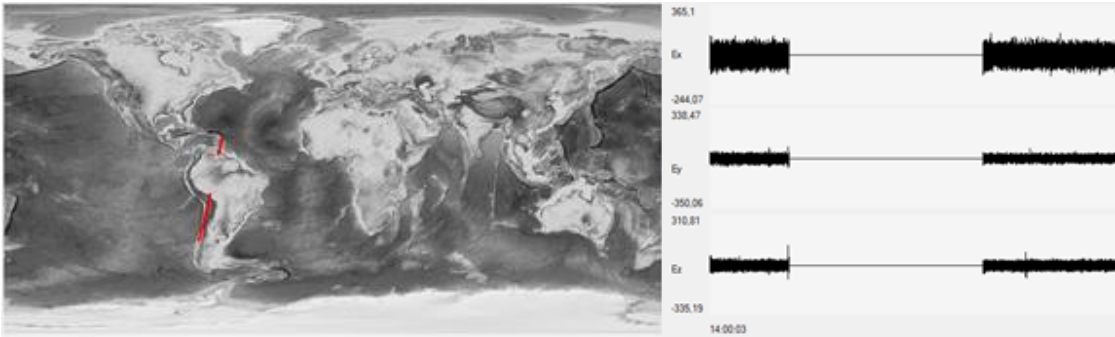


Figure.1 A typical ELF data of a half-orbit (orbit #302630 on 2010.02.26 day-side). It is shown that data are not available along the whole orbit, but only when the satellite was in 'burst mode'

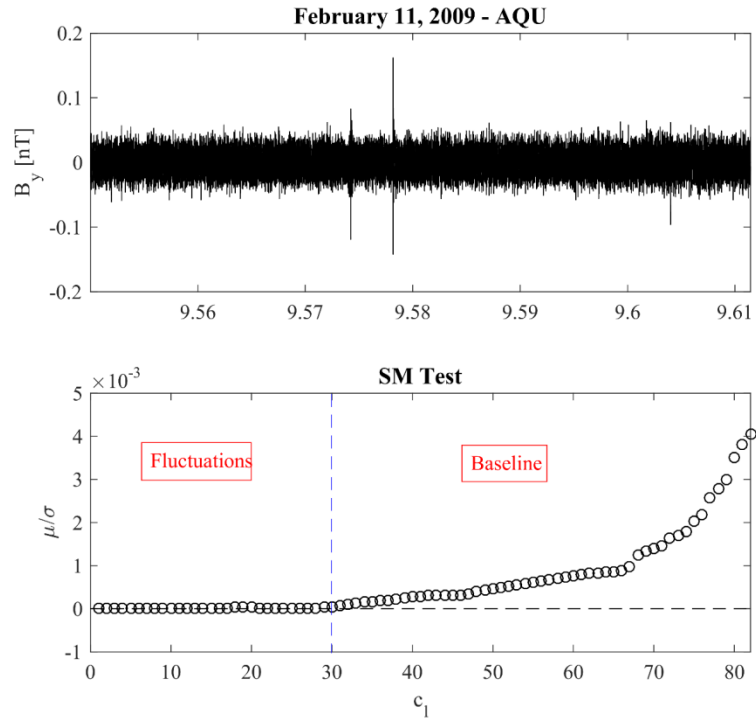


Figure 2 An example of the application of the **SM test** (lower panel) to the magnetic field observations (upper panel) over l'Aquila on February 11, 2009 from 9:33 to 9:39 UT.

5

10

15

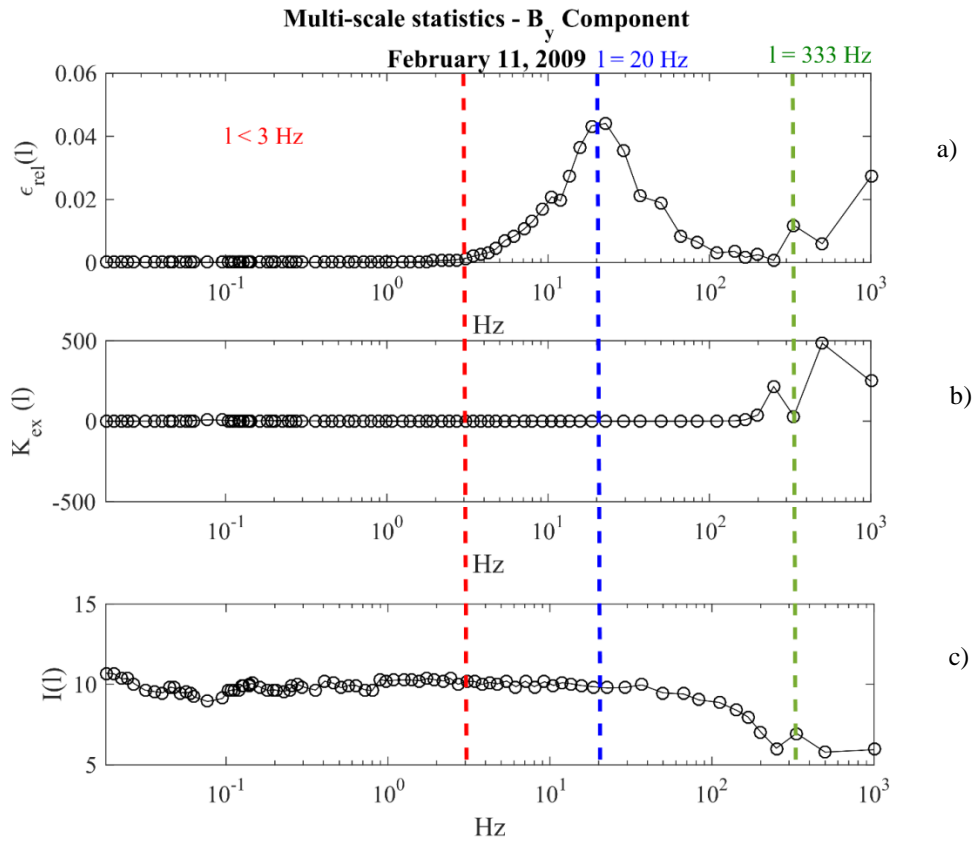


Figure 3. Example of a multiscale statistical analysis of the B_y component for the same data of Figure 2: panel a) ϵ_{rel} vs. frequency; panel b) K_{ex} vs. frequency; panel c) I vs. frequency. Two energy peaks, at 20 Hz and at 333 Hz are clearly visible.

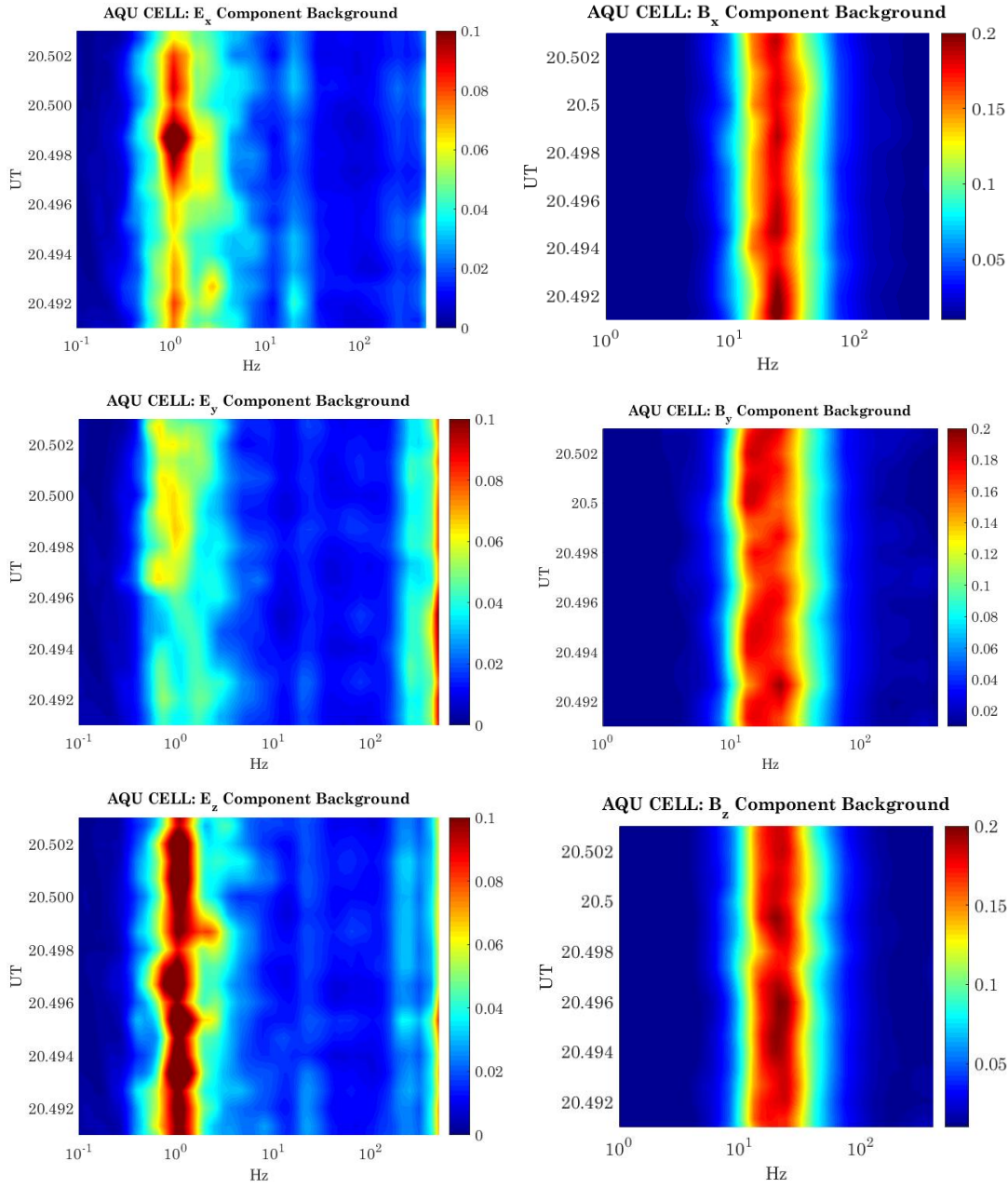


Figure 4. Environmental background for L'Aquila cell as evaluated by ALIF in terms of $\overline{\epsilon_{\text{rel}}}(\ell)$ vs. time and frequency for the reference quiet period ($M < 3$, $K_p < 2$, $L = \text{nightside}$). Left panels shows the $\overline{\epsilon_{\text{rel}}}(\ell)$ for the three components of the electric field; right panel shows the $\overline{\epsilon_{\text{rel}}}(\ell)$ for the three components of the magnetic field.

April 4, 2009: ELF DEMETER observations

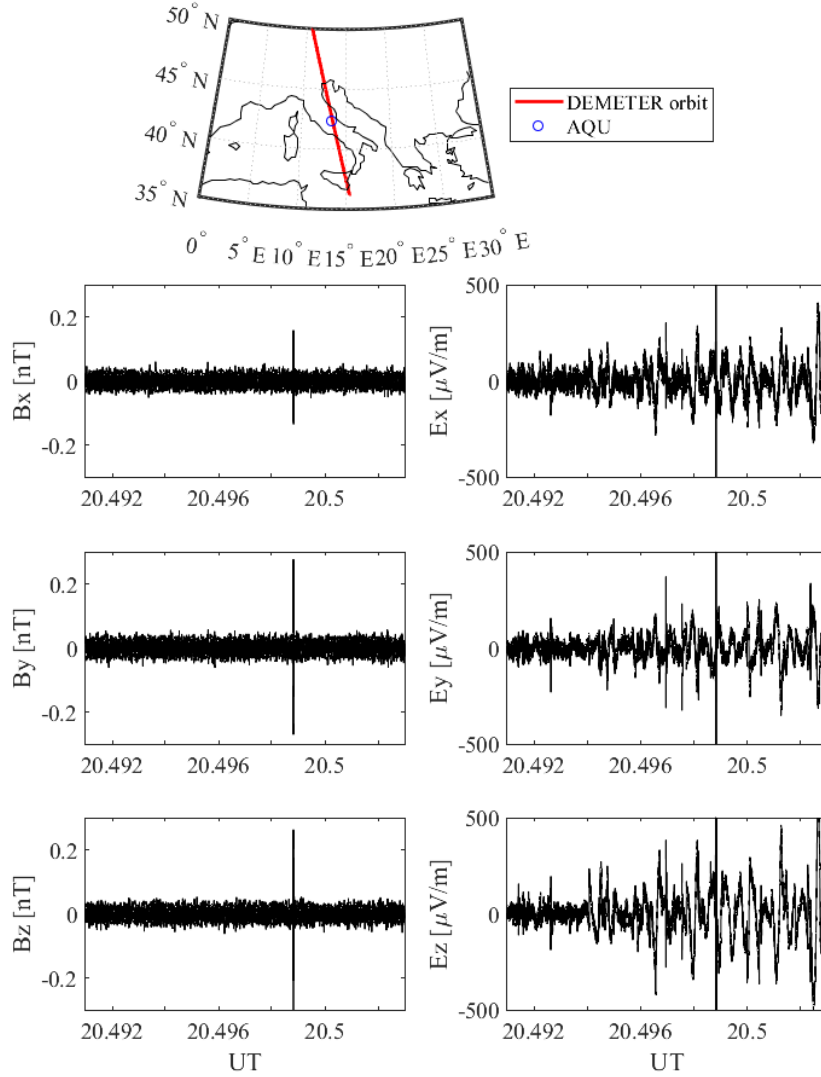


Figure 5: DEMETER electromagnetic observation on April 4, 2009 in the ELF band. The upper panel shows the satellite orbit (red) as a function of the geographic latitude and longitude. Lower panels show the electric (right panels) and magnetic (left panels) field observations as a function of the universal time (UT). The blue circle identifies the L'Aquila geographic position.

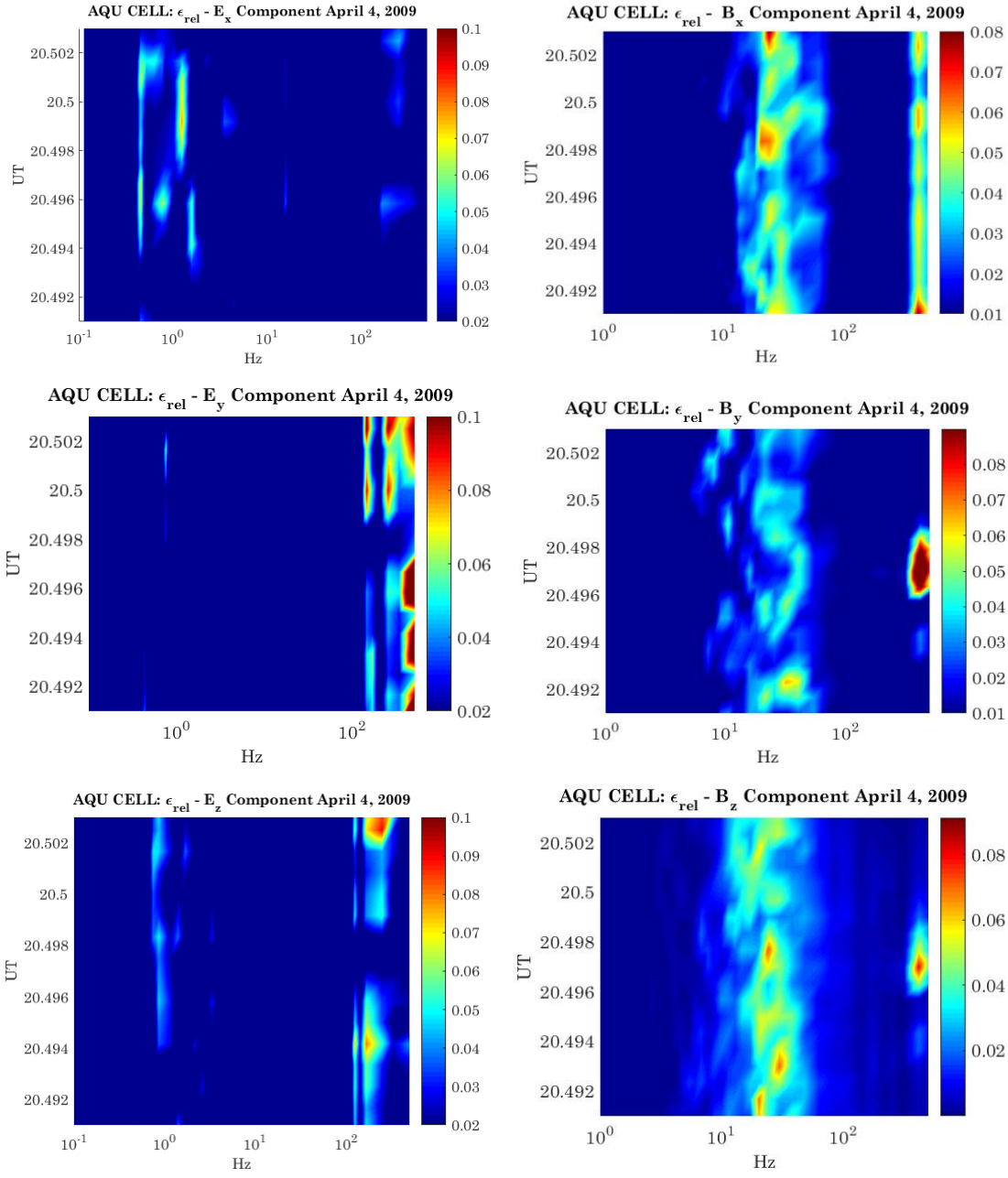
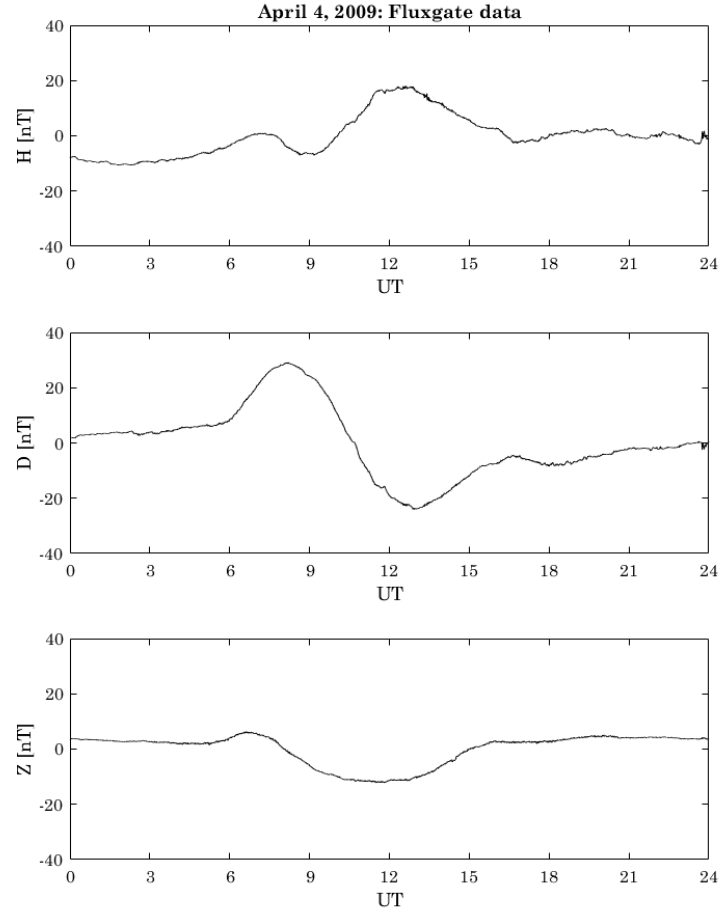


Figure 6: Anomalous event detected over L'Aquila on April 4, 2009. Left panels shows the $\epsilon_{\text{rel}}(\ell)$ vs. time and frequency for the three components of the electric field; right panels shows the $\epsilon_{\text{rel}}(\ell)$ vs. time and frequency for the three components of the magnetic field. A clear anomalous energy peak at 333 Hz, with respect to the quiet reference conditions (Figure 4) appears in both magnetic and electric field.



5 **Figure 7:** Geomagnetic field observations at L'Aquila ground station: upper panel shows the H (North-South) component; middle panel shows the D (East-West) component; lower panel shows the Z (vertical) component. The observations shows the typical Sq daily variations.