

# PPP-based Swarm kinematic orbit determination

Le Ren<sup>1</sup> and Steffen Schön<sup>1</sup>

<sup>1</sup>Leibniz Universität Hannover, Institut für Erdmessung (IfE), Schneiderberg 50, 30167 Hannover, Germany

**Correspondence:** Le Ren (ren@ife.uni-hannover.de)

**Abstract.** ESA's Swarm mission offers excellent opportunities to study the ionosphere and to provide temporal gravity field information for the gap between GRACE and GRACE-FO. In order to contribute to these studies, at IfE Hannover, a software based on precise point positioning (PPP) batch least-squares adjustment is developed for kinematic orbit determination. In this paper, the main achievements are presented.

5 The approach for the detection and repair of cycle slips caused by ionospheric scintillation is introduced, which is based on the Melbourne-Wübbena and ionosphere-free linear combination. The results show that around 95% cycle slips can be repaired and the majority of the cycle slips occur on  $L_2$ . After the analysis and careful preprocessing of the observations, one year kinematic orbits of Swarm satellites from September 2015 to August 2016 are computed with the PPP approach. The kinematic orbits are validated with the reduced-dynamic orbits published by ESA in Swarm Level 2 products and SLR  
10 measurements. The differences between IfE kinematic orbits and ESA reduced-dynamic orbits are at the 1.5 cm, 1.5 cm and 2.5 cm level in the along-track, cross-track and radial directions, respectively. Remaining systematics are characterised by spectral analyses, showing once per revolution period. The external validation with SLR measurements shows RMS errors at the 4 cm level. Finally, fully populated covariance matrices of the kinematic orbits obtained from the least-squares adjustment with 30 s, 10 s and 1 s data rate are discussed. It is shown that for data rates larger than 10 s, the correlation between satellites  
15 positions should be taken into account, for example, for the recovery of gravity field from kinematic orbits.

## 1 Introduction

The Swarm mission was launched on November 22, 2013 and is ESA's first constellation of satellites to study the dynamics of the Earth's magnetic field and its interaction with the Earth system (Friis-Christensen et al. , 2008). This mission consists of three identical satellites in near-polar low Earth orbits (LEO). The two satellites Swarm A and C fly almost side-by-side  
20 at an initial altitude of 460 km, the third Swarm satellite B flies in a higher orbit of about 530 km. All the three satellites are equipped with a set of six core instruments: absolute scalar magnetometer (ASM), vector field magnetometer (VFM), electric field instrument (EFI), star tracker (STR), accelerometer (ACC) and GPS receiver (GPSR). In order to take full advantage of the data information provided by this constellation, Precise Orbit Determination (POD) is necessary, which is obtained with data from the high precision 8-channel dual-frequency GPS receiver. In addition, each satellite has a laser retro-reflector,  
25 which makes the independent validation of the GPS-derived orbits with Satellite Laser Ranging (SLR) possible. In recent years, kinematic orbit determination has attracted much attention (Švehla and Rothacher , 2003), (Zehentner and Mayer-Gürr , 2015),

(Jäggi et al. , 2016). Compared to the reduced-dynamic approach, the kinematic approach is a purely geometrical approach without using any information on LEO satellite dynamics (e.g. gravity field, air-drag, etc.). Therefore, kinematic orbits are preferred for independent gravity field determination.

A first performance evaluation of the RUAG 8-channel GPS receiver was carried out by Zangerl et al. (2014), showing unexpected results and loss of lock due to ionospheric scintillations. Buchert et al. (2015) and Xiong et al. (2016) empirically linked the loss of GPS signal to ionospheric plasma irregularities. Results from more than one year of data using reduced-dynamic and kinematic approaches were reported in van den IJssel et al. (2015) and Jäggi et al. (2016). A comparison with SLR allows an assessment of the orbit accuracy of about 2.5 cm rms for ESA reduced-dynamic orbits and 4 cm for ESA kinematic orbits. The 3D differences between the reduced-dynamic and kinematic orbits are at the 4-5 cm level, with larger differences close to the geomagnetic poles and along the geomagnetic equator (van den IJssel et al. , 2015). An azimuth and elevation dependent PCV map is generated during flight using the residual approach (van den IJssel et al. , 2015), (Jäggi et al. , 2016). In order to collect more observations and improve the robustness under ionospheric scintillation, the receiver settings have been adjusted several times during the Swarm mission. The impact of the first update on POD performance is analysed in van den IJssel et al. (2016), showing that a lower GPS elevation cut-off angle and wider bandwidths of the tracking loops improve the performance for both orbit types. Gravity field recovery benefits also from the update (Dahle et al. , 2017).

In this contribution, the developments for kinematic POD of Swarm satellites at IfE are reported. This approach is based on the Precise Point Positioning (PPP) technique (Zumberge et al. , 1997). This differs from the raw measurements approach by Institute of Geodesy (IfG) of TU Graz (Zehentner and Mayer-Gürr , 2015), phase-only approach by Astronomical Institute of University Bern (AIUB) (Jäggi et al. , 2016) or Bayesian weighted least-squares estimator, which is implemented in the GPS High-precision Orbit Determination Software Tools (GHOST) developed at the Deutsches Zentrum für Luft- und Raumfahrt in close cooperation with TU Delft and used for the ESA official orbits (van den IJssel et al. , 2015).

Since the GPS data quality is decisive for the obtainable orbit accuracy, we first analyse in Section 2 the in-flight performance of the Swarm on-board GPS receivers, e.g. the tracking performance and observation noise, especially under the influence of ionospheric scintillation. A mandatory step in the preprocessing is detecting and, if possible, repairing the cycle slips in carrier phase observations in order to reduce the number of ambiguities and therefore strengthen the orbit. Due to the large phase noise caused by ionospheric scintillations, cycle slips in Swarm receivers are difficult to detect at ionospheric-active areas. An approach based on the Melbourne-Wübbena and ionosphere-free linear combination is introduced for this task. In Section 3, we introduce the adopted method and models for precise kinematic orbit determination by PPP in a least-squares adjustment. The obtained orbit as well as its fully populated formal covariance matrix are presented. Unlike CHALLENGING Minisatellite Payload (CHAMP) or Gravity Recovery and Climate Experiment (GRACE), the Swarm GPS receiver provides observations every second since 15 July 2014, which gives us the opportunity to study the temporal correlation of the coordinates with 1 s observation rate. The kinematic orbits are compared with the ESA reduced-dynamic orbits and SLR measurements. Thanks to a more strict data screening strategy and cycle slip detection, our kinematic orbits show a smaller RMS error compared to ESA kinematic orbits. Section 4 gives a short conclusion of this paper.

## 2 Swarm GPS data qualities

Being a purely geometrical approach without using any dynamic models on LEO satellites, the quality of the kinematic orbits relies completely on the GPS observations as well as on the introduced GPS orbit and clock products. and it is sensitive to measurement errors and the observation geometry (Švehla and Rothacher , 2003). High quality data is the prerequisite for  
5 precise kinematic orbits. Therefore, in this section we first analyse the Swarm GPS receiver data quality and introduce our approach for cycle slip detection/repair and outlier screening.

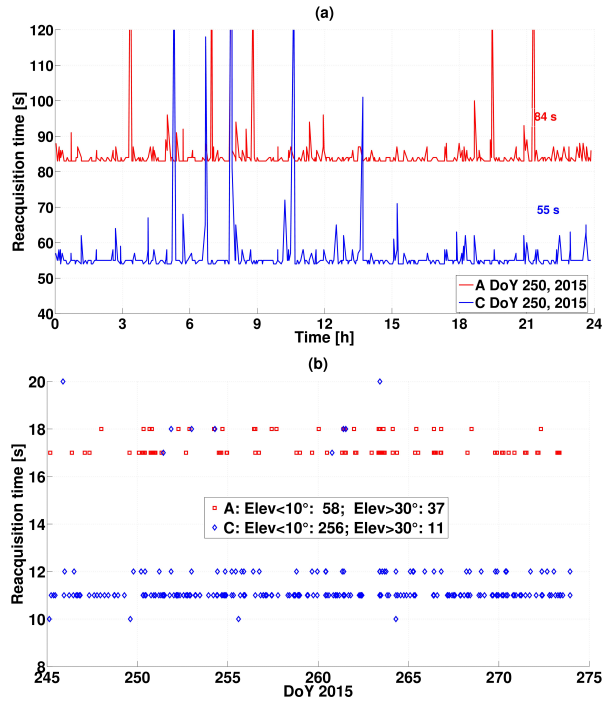
### 2.1 Tracking performance

The Swarm on-board dual-frequency GPS receivers are developed by RUAG Space (Zangerl et al. , 2014). They have 8 channels for tracking GPS satellites, which is less than the GRACE and Gravity field and steady-state Ocean Circulation  
10 Explorer (GOCE) receivers, with 10 and 12 channels, respectively. In order to collect more observations, the field of view was increased step by step from 10° elevation cut-off angle at the beginning of the mission to 2° cut-off angle since 06 May 2015 for all three Swarm satellites (van den IJssel et al. , 2015). Several updates on the bandwidth of the tracking loops were applied to improve the robustness of the tracking in difficult environmental situations. The fast reacquisition of the  $L_1$ -carrier tracking was enabled by raising the retry counter from zero to five (ESA , 2015). These updates are shortly summarized in Tab. 1 (Dahle  
15 et al. , 2017).

The daily average number of tracked GPS satellites was increased from 7.6 to 7.7 after the first update of receiver bandwidth (van den IJssel et al. , 2016). For LEO satellites, the number of satellites in view is usually larger than 8. But due to the limitation of receiver channels, maximally only 8 GPS satellites can be tracked. There are two reasons for epochs within which less than 7 GPS satellites are tracked.

20 The first reason is the reacquisition time of the Swarm receiver. When a GPS satellite sets, the receiver cannot immediately track another GPS satellite in view and needs around 84 seconds before the first receiver update (red) and 55 seconds after the update (blue) to acquire another satellite, shown in Fig. 1 (top), exemplarily for DoY 250, 2015. So, during the reacquisition phase, the number of satellites is less than 8. If some satellites set during short time together, the number of tracked satellites is even less than 7. This shortened reacquisition time is also the main reason for the increased number of tracked GPS satellites.

25 Another reason for tracking less than 7 GPS satellites is the loss of lock of signal. There are also two reasons for the loss of GPS signal, one is due to the weak signal strength for the GPS satellites at low elevations. However, the loss of lock on GPS satellites at high elevations occurs mainly at polar and equatorial areas under the influence of ionospheric scintillations, which is evidenced by the change of Total Electron Content (TEC). The occurrence of loss of lock in September 2015 is exemplarily shown in Fig. 1 (bottom). Although the amount of the loss of lock on GPS satellites at higher elevations was decreased from  
30 37 to 11 after the update, the receiver becomes instable for the signals from lower elevations. The amount of the loss of lock increased almost fourfold, from 58 to 256. The reacquisition time in such situation was decreased from around 17 seconds to 11 seconds after the update.

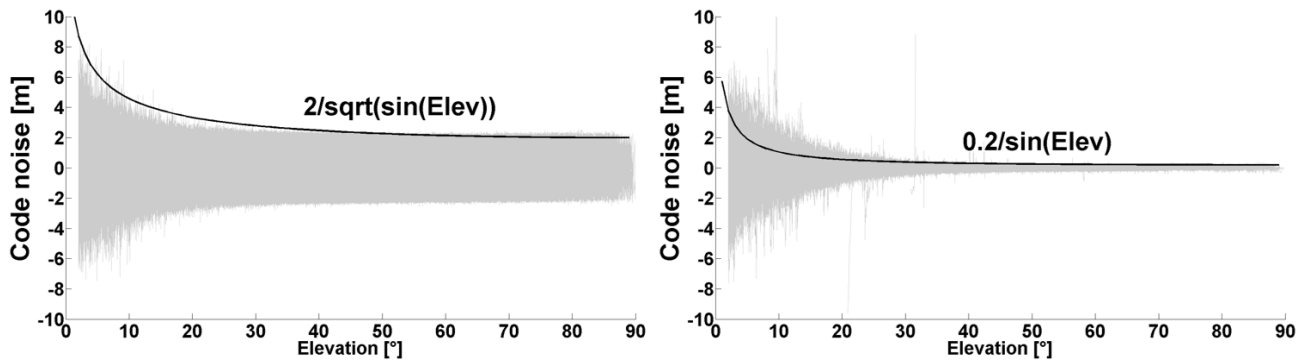


**Figure 1.** Reduction of reacquisition time for Swarm GPS receivers (a) due to setting and rising satellites on DoY 250, 2015 and (b) due to loss of lock in September 2015, red for Swarm A and blue for Swarm C with different tracking settings.

## 2.2 Observation Analysis

As a dual-frequency receiver, the Swarm GPS receiver provides code observations  $C/A$  ( $C1C$ ),  $P_1$  ( $C1P$ ) and  $P_2$  ( $C2P$ ) and carrier phase observations  $L_1$  ( $L1C$ ) and  $L_2$  ( $L2P$ ) in the Swarm Level 1b product in the RINEX 3.0 format. A solid analysis of the observation noise is mandatory for an adequate stochastic model. Typically models are identical weights or elevation dependent weights, like e.g.,  $1/\sin(Elev)$  or  $1/\sqrt{\sin(Elev)}$ . The code accuracy is analysed with the multipath linear combination (Estey and Meertens, 1999), which contains multipath effects, ambiguities, code and phase noise. Since carrier phase noise is smaller than code noise by two or three orders of magnitude, it can be neglected. Ambiguities are subtracted as mean value. Then, only code noise and multipath effects remain.

Due to a software issue in the RINEX converter (ESA, 2016), the code observations in the Level 1b product before 11 April 2016 (DoY 102) suffer from high noise. The  $P_1$  code noise for all the GPS satellites w.r.t. the elevation for Swarm A on DoY 100, 2016 and DoY 104, 2016 is shown in Fig. 2 as an example. Large code noise of about 1.3 m ( $1\sigma$ ), even at high elevations, can be seen in the left figure, which is caused by the software issue. After fixing the converter issue, the code noise shows a strong elevation-dependence. The  $P_1$  code is disturbed by noise of about 0.8 m ( $1\sigma$ ) for satellites at elevations lower than  $15^\circ$ . The noise is smaller than 0.2 m ( $1\sigma$ ) for the satellites above  $30^\circ$ . A  $1/\sin(Elev)$  curve is used here to approximate



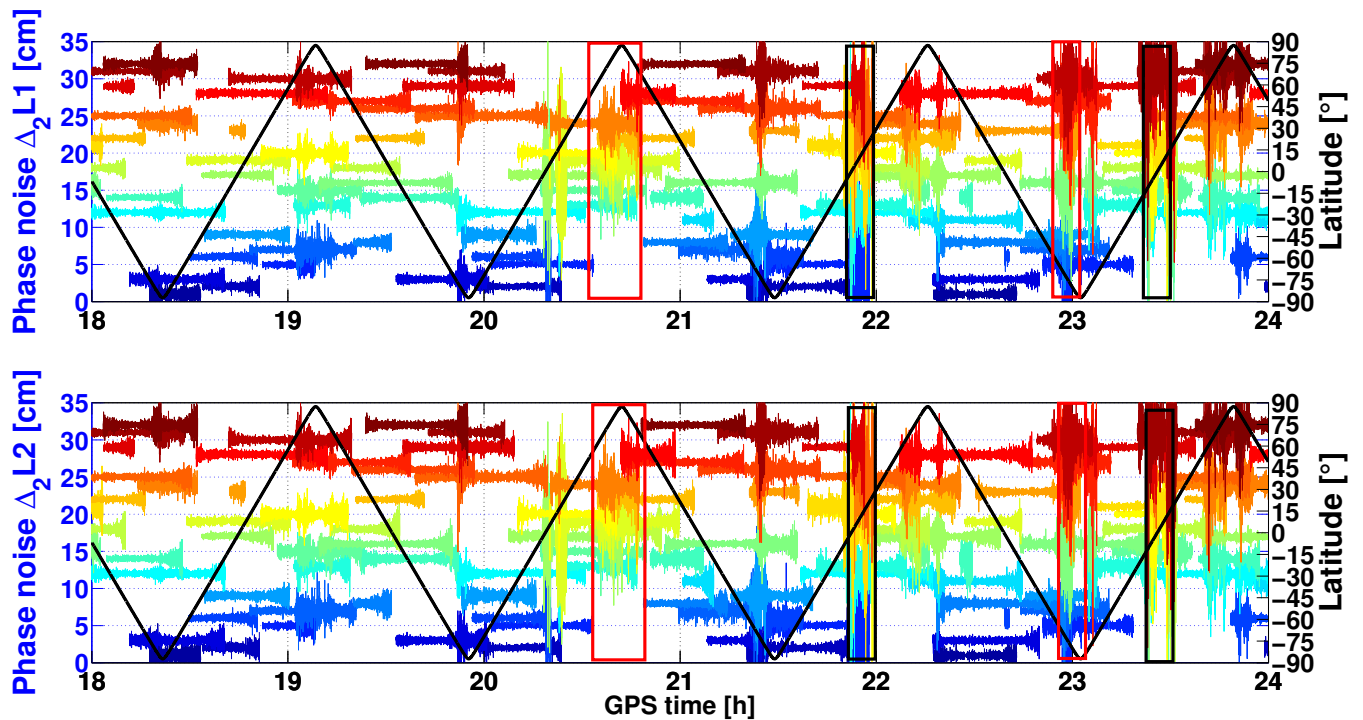
**Figure 2.**  $P_1$  Code noise w.r.t. elevation for Swarm A on DoY 100 before fixing the RINEX converter issue (left), and DoY 104, 2016 after fixing the issue (right).

the noise behavior. The standard deviations ( $1\sigma$ ) of  $C/A$  code and  $P_2$  code for the satellites above  $15^\circ$  are around 0.33 m and 0.21 m, respectively, after fixing the converter issue. The  $C/A$  code noise measured on-board based on 1 Hz data rate is twice larger than the noise (0.16 m) measured on-ground with double-differences on a zero baseline experiment (i.e. two receivers are connected to one antenna via a signal splitter, but averaged over 10 second), reported in Zangerl et al. (2014). The  $P_2$  code noise with 0.21 m on-board is smaller than the noise in the on-ground test with 0.31 m.

The quality of the kinematic orbit determination depends mainly on the available dual frequency carrier phase observations. To analyse the phase noise, the second-order differences ( $\Delta_2 L(t) = L(t+1) - 2L(t) + L(t-1)$ ) of successive phase observations are used, after removing the geometric distances, which are computed with the Swarm Level 2 reduced-dynamic orbits. The receiver clock offset and drift is removed during differencing. Due to the differencing process involved, this is a qualitative evaluation method rather than a quantitative one.

The resulting  $\Delta_2 L_1$  and  $\Delta_2 L_2$  phase time series of Swarm A from 18:00 to 24:00 on DoY 333, 2015 for all the GPS satellites are shown in Fig. 3 with respect to time. In addition, the geographic latitude is given. In order to know whether the phase observations are influenced by ionospheric scintillations, the absolute Slant Total Electron Content (STEC), which is defined as integrated electron density along the line of sight from Swarm to GPS satellites and provided in the Swarm level 2 product, with its rate at Swarm A are shown in Fig. 4. The absolute STEC is derived from the geometry-free linear free combination of  $L_1$  and  $L_2$ , after corrections for differential code biases of GPS satellite transmitters and Swarm receivers (Swarm TEC Product, 2017).

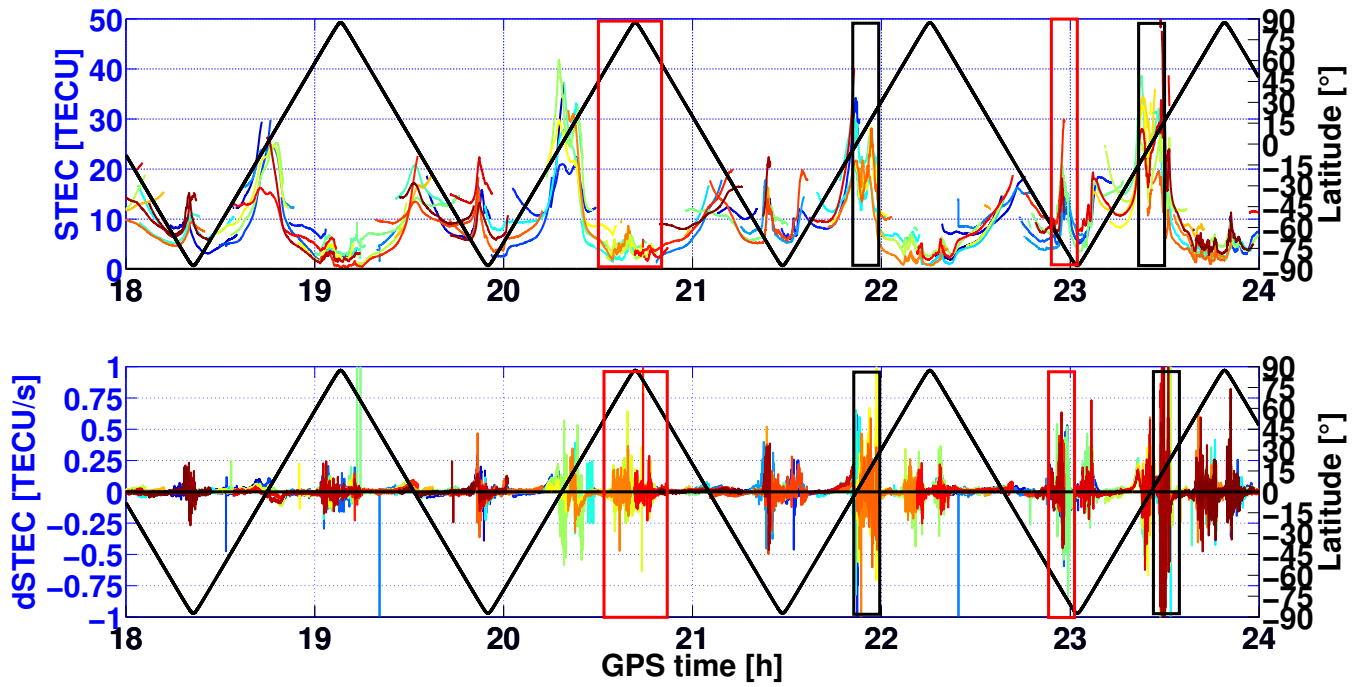
Figure 3 and 4 highlight the variability of the phase noise with respect to the rate of STEC. Carrier phases on both frequencies are simultaneously disturbed under the influence of ionospheric scintillations for all GPS satellites, even at high elevation. Similar large fluctuations exist also in the second-order differences of the ionosphere-free linear combination  $\Delta_2 L_3$ . The widening of the carrier tracking loops during the updates reduces the impact of ionospheric fluctuations significantly (van den



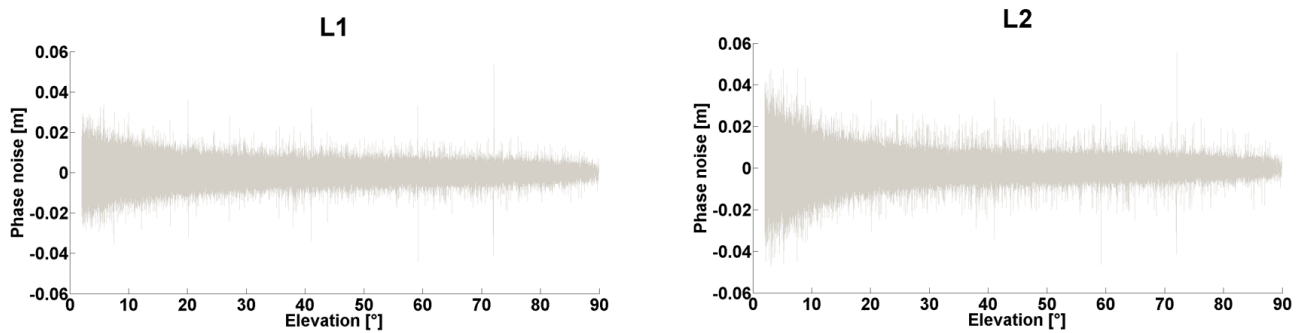
**Figure 3.**  $\Delta_2L_1$  (top) and  $\Delta_2L_2$  (bottom) noise for Swam A from 18:00 to 24:00 on DoY, 333, 2015, color coded per PRN (from blue PRN1 to red PRN 32). The time series are intentionally shifted by  $\text{PRN} \times 1$  cm. The local time is 8:30 for descending arc and 20:30 for ascending arc. The right legend shows the geographic latitude.

IJssel et al. , 2016). The large phase noise, even at decimeter level, can be found almost always at high geographic latitude areas (above  $60^\circ$ , see exemplarily red boxes in Fig. 3), where the STEC is low, but varies rapidly. At mid-latitude areas ( $20^\circ - 60^\circ$ ), the ionosphere is less active, and these effects are rare. At equatorial areas the impact depends on the local time and the activity of local ionosphere. Exemplarily, from 18:00 to 20:00, the STEC is high, but changes slowly which does not disturb the phase observations much. On the contrary, after 20:00 in ascending arcs, with local time around 20:30 after sunset, the changes in STEC are rapid and the phase observations are strongly perturbed (compare black boxes in Fig. 3). This large noise degrades the accuracy of the kinematic orbit significantly and makes it difficult to detect small cycle slips with standard methods.

The  $\Delta_2L_1$  and  $\Delta_2L_2$  phase noise at mid-latitude areas w.r.t. elevation is shown in Fig. 5. At a low level of ionospheric activity, the phase noise can reach mm level and the noise on  $L_1$  is slightly lower than on  $L_2$ . The standard deviations ( $1\sigma$ ) of  $\Delta_2L_1$  and  $\Delta_2L_2$  are 3.9 mm and 4.2 mm, respectively. There is no strong dependence on the elevation. Assuming independent observations, the standard deviation ( $1\sigma$ ) of the undifferenced phase observations can be assessed to be about 1.6 mm for  $L_1$  and 1.7 mm for  $L_2$ , according to the laws of error propagation.



**Figure 4.** STEC (top) and its rate (bottom) for Swam A from 18:00 to 24:00 on DoY, 333, 2015. The right legend shows the geographic latitude.



**Figure 5.** Carrier phase noise for  $\Delta_2 L_1$  and  $\Delta_2 L_2$  at mid-latitude areas on DoY 333, 2015, plotted versus elevation.

### 2.3 Cycle Slip Detection/Repair

Strong ionospheric scintillations cause not only large noise but also cycle slips in the carrier phase observations. Therefore, a proper cycle slips detection is necessary to set up correctly the ambiguities. Since the typical GPS satellite visibility for LEOs is most 40 minutes, the necessity of estimating additional ambiguities for even shorter segments will further decrease the geometric strength of the positioning.

A classical method for cycle slip detection is to use the TurboEdit method (Blewitt , 1993) based on the Melbourne-Wübbena linear combination (Melbourne , 1985), (Wübbena , 1985):

$$L_{MW} = \frac{f_1 L_1 - f_2 L_2}{f_1 - f_2} - \frac{f_1 P_1 + f_2 P_2}{f_1 + f_2} = \lambda_w (b_1 - b_2), \quad (1)$$

with

- $L_{MW}$  the Melbourne-Wübbena linear combination,
- $f_1, f_2$  the carrier frequency,
- $L_1, L_2$  the carrier phase observation in meters,
- $b_1, b_2$  the ambiguities,
- $\lambda_w$  the wide-lane wavelength.

However, the code observations before DoY 102, 2016 contain large noise due to the RINEX converter issue (ESA , 2016), see Fig. 2. The corresponding standard deviation ( $1\sigma$ ) of the Melbourne-Wübbena combination is about 0.8 cycles (wide-lane wavelength). The threshold used in the TurboEdit method for the cycle slip detection is typically  $4\sigma$ , which means that cycle slips smaller than 3 cycles cannot be detected, see Fig. 6a.

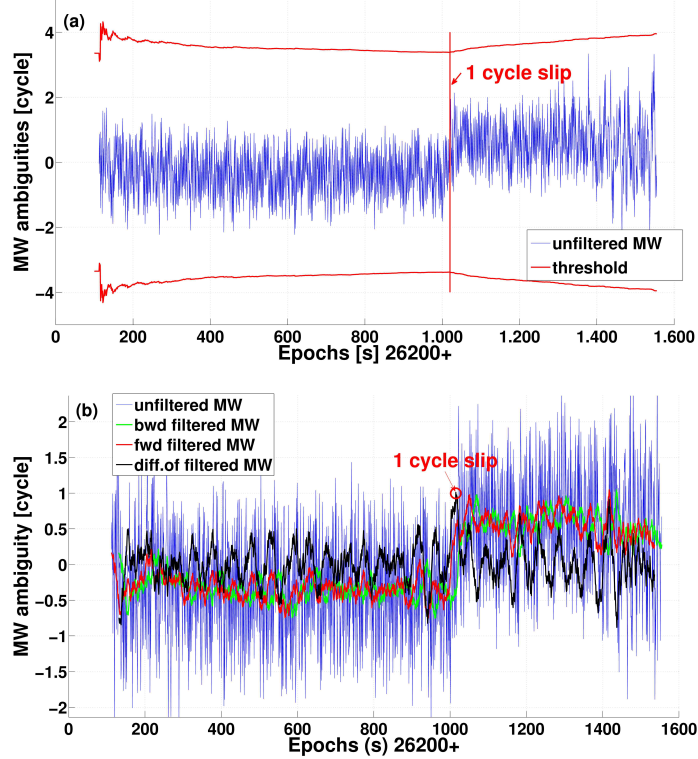
So, a forward and backward moving window averaging (FBMWA) method is applied to reduce the influence of large noise (Cai et al. , 2013). In this algorithm, the widelane ambiguity is smoothed in both forward and backward directions with a specified size  $m$  of smoothing window in each direction. This differs from the regular TurboEdit algorithm where only the backward smoothing is performed and the window size continuously grows with the number of epochs. For Swarm satellites,  $m$  is set as 50, in order to reduce the noise of widelane ambiguity to 0.1 cycles. As an example PRN23 is shown in Fig. 6b, the cycle slip is the difference between the forward moving window average at epoch  $k$  and the backward moving window average at epoch  $k - 1$ , here:

$$c_1 = \frac{\Delta L_{MW}}{\lambda_w} = \frac{1}{m\lambda_w} \left( \sum_{i=k}^{k+m-1} L_{MW}(i) - \sum_{i=k-1}^{k-m} L_{MW}(i) \right) = \Delta b_1 - \Delta b_2, \quad (2)$$

where  $\Delta$  is the operator for epoch differencing, and  $c_1 = 1$  can be identified in the peak close to an integer (difference smaller than 0.1) in the black curve in this example.

Since with the Melbourne-Wübbena linear combination only the difference of cycle slips on  $L_1$  and  $L_2$  can be detected and simultaneous occurring of same magnitude cycle slips on  $L_1$  and  $L_2$  are not detectable, another linear combination is still required, in order to determine the cycle slips on both frequencies, respectively, and repair them. Due to the rapid variations of





**Figure 6.** Illustration of the proposed cycle slip detection approach based on Melbourne-Wübbena combination, PRN23 of Swarm A on DoY 333, 2015: (a) TurboEdit method, the cycle slip cannot be detected; (b) FBMWA (forward and backward moving window averaging) method  $\Delta b_1 - \Delta b_2 = 1$

the ionospheric delays and the large phase noise at ionosphere active areas, the geometry-free linear combination is not suitable for Swarm receivers. Here, the time-differenced ionosphere-free linear combination after removing the difference of geometric distances and receiver clock errors is thus used, so that the rapid and large variations of the ionospheric delay can be avoided:

$$\begin{aligned}
 \Delta L_3 &= \frac{f_1^2}{f_1^2 - f_2^2} \Delta L_1 - \frac{f_2^2}{f_1^2 - f_2^2} \Delta L_2 \\
 &= \Delta \rho + \Delta \delta t_r + \frac{c f_1}{f_1^2 - f_2^2} \Delta b_1 - \frac{c f_2}{f_1^2 - f_2^2} \Delta b_2,
 \end{aligned} \tag{3}$$

5 with

$L_3$  the ionosphere-free combination of carrier phase (other observation errors are corrected)

$\rho$  the geometric distance between GPS satellite and receiver position,

$\delta t_r$  the receiver clock error in meters,

where the coefficients before  $\Delta b_1$  and  $\Delta b_2$  are approximately 0.4844 m and 0.3775 m, respectively.

The geometric distances are computed with the Medium Precise Orbit (MEO) provided by ESA in Swarm Level 1b product and removed from the right-hand side of Eq. (3). The prerequisite for this approach is that there is no large jump in the a priori orbit.

After removing the geometric distances term, the differences of receiver clock error and ambiguity on  $L_1$  and  $L_2$  still remain.

5 If there is no cycle slip in carrier phase, the ambiguity term should be like zero-mean white noise and the difference of receiver clock error can be computed as the average over all tracked GPS satellites, as it is same for all receiver channels. If there are cycle slips for one GPS satellite, the deviation between the average and this satellite is much larger than the other normal satellites. So the satellite with cycle slips can be detected and the difference of receiver clock error should be computed again without this one until no large deviation can be found and removed from the right-hand side of Eq. (3).

10 After removing the geometric distances and receiver clock error, only the ambiguity term remains. If there is no cycle slip,  $\Delta L_3$  time series spreads around zero in accordance with the phase noise. When a cycle slip occurs, a large jump is caused in the time series. In order to determine the cycle slip exactly and distinguish it from outliers, this jump should be computed as accurately as possible. Instead of calculating the epoch difference of two successive epochs (Fig. 7a), the epoch difference of two epochs separated by  $n$  epochs (Fig. 7b) are calculated and then the mean value of these  $n$ -epochs differences is formed so  
 15 that the influence of the large noise under ionospheric scintillation can be reduced, see Fig. 7b. Considering the large noise of ionosphere-free linear combination under ionospheric scintillations (around 10 cm), we propose to select  $n = 100$ , in order to reduce the noise to 1 cm level. Taking the example of PRN23, we can get:  $c_2 = 0.4844\Delta b_1 - 0.3775\Delta b_2$ , here  $c_2 \approx 0.38m$ .

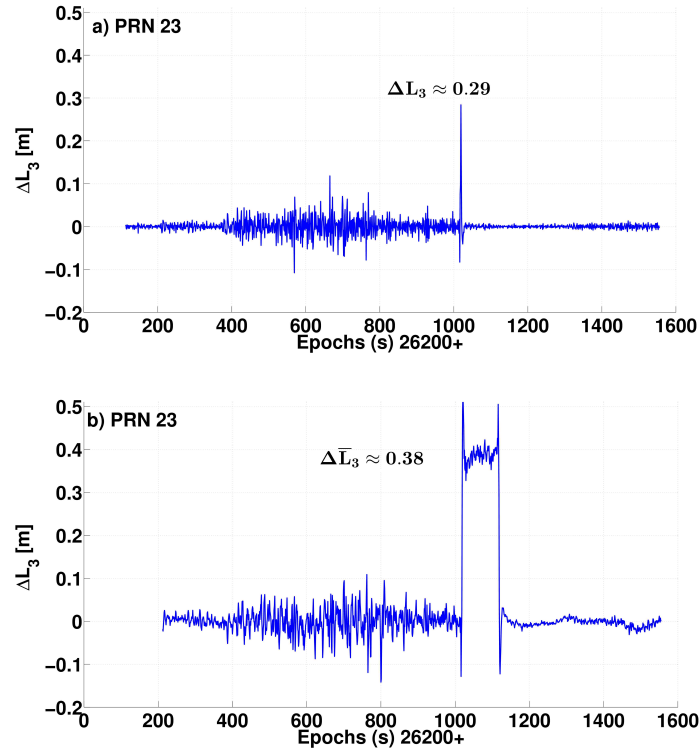
Together with the equation from Melbourne-Wübbena linear combination, the cycle slip on  $L_1$  and  $L_2$  can be determined:

$$\begin{bmatrix} \Delta b_1 \\ \Delta b_2 \end{bmatrix} = \begin{bmatrix} 1 & -1 \\ 0.4844 & -0.3775 \end{bmatrix}^{-1} \begin{bmatrix} c_1 \\ c_2 \end{bmatrix}. \quad (4)$$

20 In this example we get:  $\Delta b_1 \approx 0.023 \approx 0$  and  $\Delta b_2 \approx -1$ . If the difference of  $\Delta b_1$  to its nearest integer is smaller than 0.2, it can be rounded and marked as "repaired".

The statistics of the repaired cycle slips for Swarm satellites during one year from DoY 245, 2015 to DoY 244, 2016 are listed in Table 2. Around 95% of the cycle slips could be repaired. Issues occur by rapid sequences of cycle slips in short time due to strong ionospheric scintillations. The observations during this period can be excluded as outliers. The majority of the cycle  
 25 slips occur on  $L_2$ . The worldwide distribution of the cycle slips are shown in Fig. 8a. As expected, their occurrence is linked with ionosphere active regions such as polar and equatorial areas. Because of a higher orbit (530 km), where the ionosphere is weaker than at the lower orbit (450 km), the number of cycle slips on Swarm B is less than for Swarm A and C. Due to the similar atmosphere around Swarm A and C, they suffer from the cycle slips almost at the same time. Significantly more cycle slips around the geomagnetic South Pole than around the North Pole are found. The reasons are still under investigation.

30 In order to see the impact of update of bandwidth of the tracking loop, the cycle slips in September, 2015 are shown in Fig. 8b additionally. It can be seen that the number of cycle slips are significantly reduced after the update in May, 2015 on Swarm C. Because the ionosphere is very weak since May 2016, the tracking is very stable. There were just few cycle slips, so the impact of the update in June and August 2016 cannot be observed.

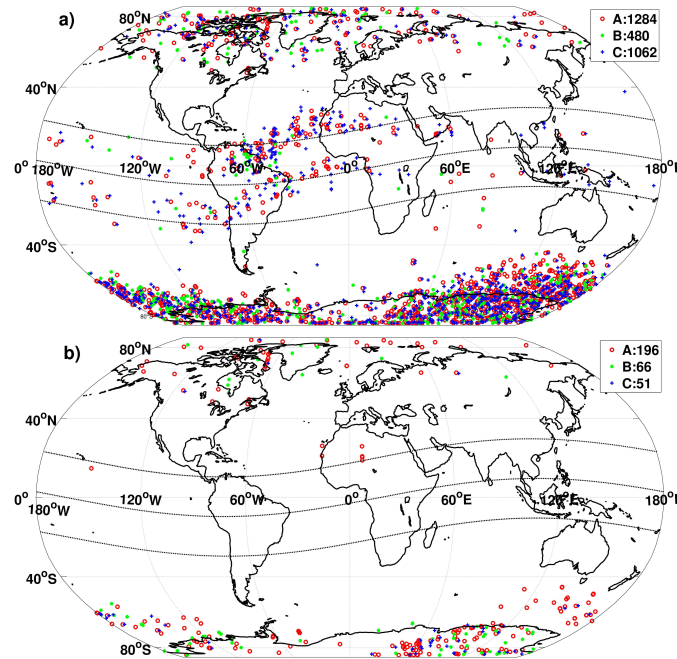


**Figure 7.** Illustration of the proposed cycle slip detection approach based on ionosphere-free linear combination, PRN23 of Swarm A on DoY 333, 2015: a)  $\Delta L_3$  between two successive epochs  $0.29 = 0.4844\Delta b_1 - 0.3775\Delta b_2$ ; b)  $\Delta L_3$  between two epochs separated by 100 epochs  $0.38 = 0.4844\Delta b_1 - 0.3775\Delta b_2$

## 2.4 Outlier detection

As a purely geometric approach, the kinematic orbit is sensitive to the GPS measurement errors. As a consequence, it is important to screen the outliers. The epoch-differenced ionosphere-free linear combination  $\Delta L_3$  used in cycle slip detection can also be used to detect the outliers. Considering the L3 noise under ionospheric scintillation can reach 10 cm level, if  $\Delta L_3$  is larger than 20 cm, an outlier is detected and should be eliminated. Some systematic errors can also be detected with it. For cases where the orbit of a given GPS satellite is not accurate enough, the time series of  $\Delta L_3$  of the corresponding GPS satellite will not be zero-mean, but shows some strong trend. Thus, to avoid a systematic error in the LEO orbit and carrier phase residuals, the corresponding satellites have to be removed accordingly. This can be seen in Fig. 9 for PRN 26 (purple) and PRN 32 (green). Such satellites can be found in the IGS weekly summary (e.g. <ftp://ftp.igs.org/pub/product/1864/igs18647.sum.Z>).

After removing these satellites, the quality of the kinematic orbits is significantly improved. The same effects can also be found on Swarm C at the same time.



**Figure 8.** Global distribution of cycle slips on Swarm A (red), B (green) and C (blue), a) from DoY 245, 2015 to DoY 244, 2016 and b) for September, 2015. The black lines are the geomagnetic equator and geomagnetic parallel of  $\pm 20^\circ$ . The results are given in Table 2.

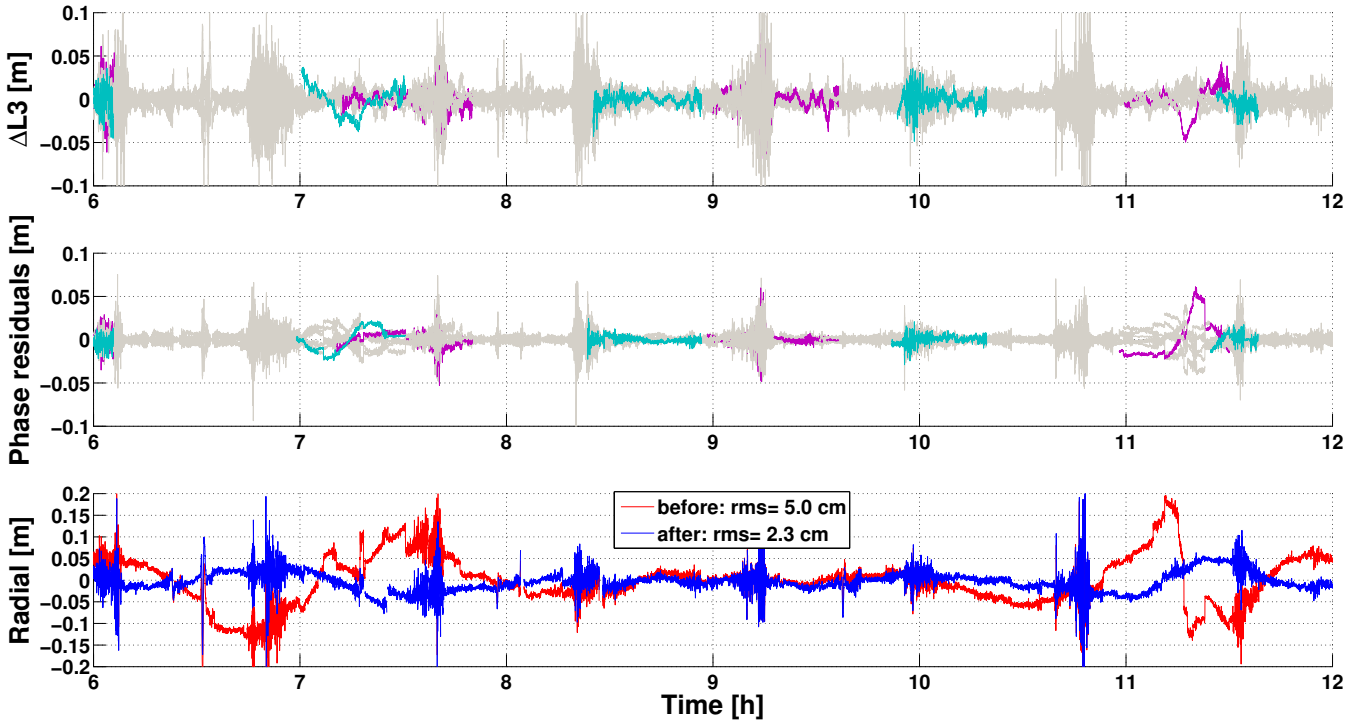
### 3 Kinematic orbit determination

In this section, the approach for kinematic orbit determination at IfE will be introduced first. Then one year kinematic Swarm orbits are validated with the reduced-dynamic orbits and the SLR residuals, respectively. The fully populated variance-covariance matrices of the kinematic orbits obtained from the adjustment are shown and discussed.

#### 5 3.1 Observation modeling

A MATLAB-based PPP software was developed at IfE, Hannover using the least-squares adjustment method. The ionosphere-free linear combinations of P code and phase are computed and introduced as observables in the least-squares adjustment model to eliminate the first-order ionospheric effect. The GPS orbits and satellite clock errors are computed based on the CODE final GPS orbits and 5 s clocks products provided by the Center for Orbit Determination in Europe (CODE) (Dach et al. , 2016),  
 10 (Bock et al. , 2009). The observation and error modeling used for the kinematic orbit determination are listed in Table 3.

The 1 Hz data is processed over 30 hours, with 3 hours overlap to the previous and following day. In this way, it can be avoided that some GPS observations are removed due to the short arc at the day boundary. This increases the stability of the ambiguities at the day boundary. Because the observation time saved in the RINEX file is synchronized to the receiver internal clock, which has a large clock drift, a time offset is added to synchronize the internal clock with GPS time everyday at the day



**Figure 9.** Outlier detection and anomalous GPS satellite for Swarm A on DoY 271, 2015, here PRN26 (purple), PRN32 (green). Top panel:  $\Delta L_3$  between epochs separated by 100 seconds; middle panel: phase residuals; bottom panel: deviations of the kinematic orbit w.r.t. ESA reduced-dynamic orbits with (red)/without (blue) the anomalous GPS satellites.

boundary. This causes a clock jump in the code observations and a clock jump as well as a phase jump in the carrier phase observations. In order to get a continuous arc at the day boundary, these phase jumps need to be fixed. The clock jump is first determined from the average of each epoch-differenced code observations (removing the a priori geometric distances) at the day boundary. Then, the phase jump is the average of each epoch-differenced phase observations (removing the a priori geometric distances) minus the clock jump.

The phase noise is weakly elevation-dependent (see Fig. 5), thus, an identical weight matrix is applied to phase observations. The code noise has a stronger elevation-dependent behavior after fixing the converter issue. So a sine-squared elevation-dependent weight matrix is applied to code observations after fixing, instead of a sine elevation-dependent weight matrix before fixing. The variances are selected with 6 m (before fixing the converter issue)/0.6 m (after fixing the converter issue) for code and 6 mm for carrier phase according to the investigation described in Section 2, taking the error propagation for the ionosphere-free linear combination into account and considering the phase noise under ionospheric scintillation. Accordingly, the weight matrix per epoch has a diagonal structure.

The three unknown position coordinates  $x$ ,  $y$ ,  $z$  and receiver clock error  $\delta t_r$  are estimated epoch-wise, while the ambiguities  $b$  are constant over one consecutive GPS satellite-to-satellite tracking pass. A batch least-squares adjustment with pre-elimination/back-substitution is used for the estimation of the unknown parameters.

### 3.2 Kinematic orbit results

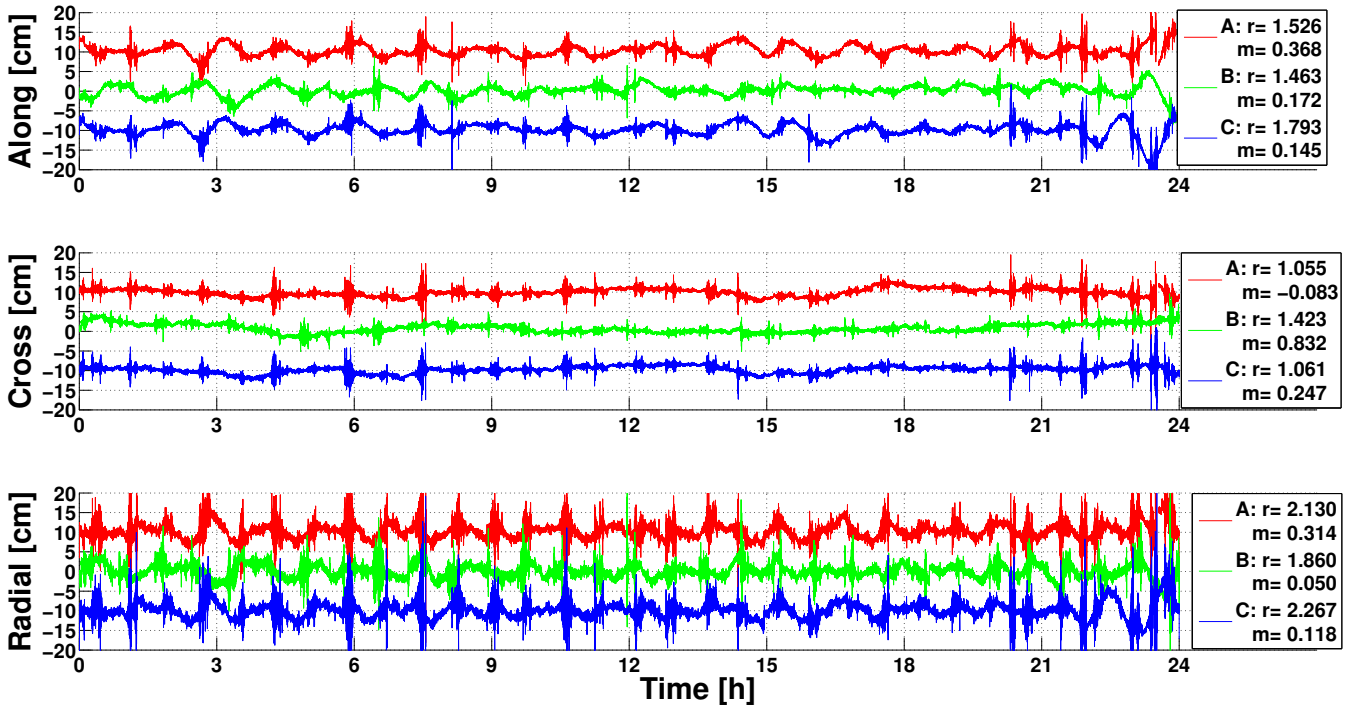
5 One year orbits from 02 September 2015 to 31 August 2016 are computed. Here only exemplary but typically results are shown. The position residuals for Swarm A, B and C on DoY 333, 2015 w.r.t. the reduced-dynamic orbits provided by ESA in Swarm Level 2 product are shown in Fig. 10. For a better illustration, the time series for Swarm A and C are shifted by  $\pm 10$  cm.

The RMS errors in along-track, cross-track and radial directions are around 1.5, 1 and 2 cm, respectively, for all three  
10 satellites. The noise caused by the ionospheric scintillations, shown in Fig. 3, degrades the position when passing at equatorial and polar regions. It is mainly absorbed in the radial component. At some ionosphere-active areas the deviations are beyond 10 cm, or even 20 cm. Comparing Swarm A and C, a similar signature can be seen due to the similar GPS constellation and atmospheric conditions. Besides the large noise, all three orbits are affected by systematic errors in along and radial component, predominantly at timescales to the orbital period. These periodic variations may either be caused by modeling deficiencies in  
15 the PPP solution or the reduced-dynamic orbits that are used as reference trajectory.

The RMS errors and average of position residuals for Swarm A, B and C of IfE and ESA kinematic orbits from DoY 245, 2015 to DoY 244, 2016 are listed in Table 4. The days with orbit maneuvers and instrument problems and epochs with GDOP values larger than 5 were excluded. The differences between the reduced-dynamic and kinematic orbits are at the 1.5, 1.5 and 2.5 cm level in the along-track, cross-track and radial directions, respectively. Since Swarm B flies in a higher orbit, the  
20 influence of ionosphere is weaker than for Swarm A and C. A better kinematic orbit quality can be observed for Swarm B, especially in the radial direction. It is also worth mentioning that the average offset between kinematic and reduced-dynamic orbit in cross-track is larger than in the along-track and radial directions.

The computed kinematic orbits of Swarm C are also compared with the kinematic orbits from ESA (van den IJssel et al., 2015), IfG of TU Graz (Zehentner and Mayer-Gürr, 2015) and AIUB (Jäggi et al., 2016). Again, ESA reduced-dynamic  
25 orbits are the reference trajectory. The position residuals of all institutes from DoY 01 to DoY 07, 2016 are shown in Fig. 11. The RMS values are given in the legend. Our results are in good agreement with the kinematic orbits derived from the other institutes.

In order to analyse the remaining deviations, a spectral analysis is performed for Swarm C for March 2016 in Fig 12. The once per revolution periodic signatures in the along-track and radial direction are well identified in all orbits except that of IfG,  
30 with 93.5 min for IfE and AIUB, 80.3 min for ESA. Besides the once per revolution, a twice per revolution periodic signature can be observed in the three orbits probably due to the impact of ionospheric scintillations at polar areas, with 46.2 min for IfE and ESA, 48 min for AIUB. Interestingly, the signatures of cross track are different; IfE orbits are showing no significant periodicity. A half day periodicity can be observed in AIUB and ESA orbits. The remaining high frequency noise in the radial component is clearly visible in IfE and ESA orbits, which is linked to the observation noise during the passage of ionosphere-



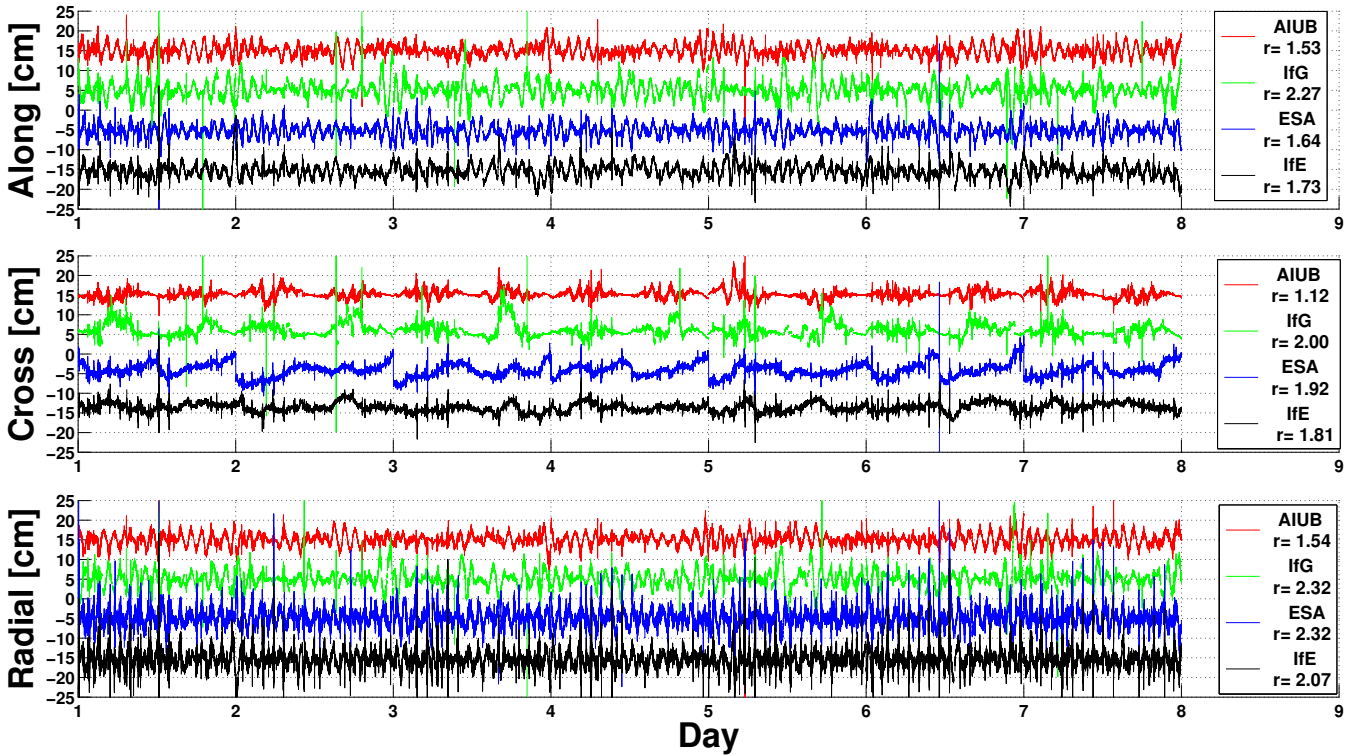
**Figure 10.** Position residuals for Swarm A (red), B (green) and C (blue) w.r.t. ESA reduced-dynamic orbits for DoY 333, 2015. The time series are offset by 10 cm for Swarm A and C. The legend indicates the RMS ( $r$ ) and mean value ( $m$ ) in cm.

active areas. For the along- and cross-track component, IfE is at the AIUB level for frequencies larger than  $10^{-3}$  Hz. High frequency white noise contribution dominates in IfE and AIUB orbits until 250 s and ESA and Graz orbits until 100 s. Then flicker noise persist in all the components. Between once per revolution and twice per revolution, in IfE along-track and radial component some long periodic systematic persist. The cross-track component of IfE is showing a  $f^{-1}$  behavior.

- 5 An additional possibility to assess the orbit quality is to analyse the residuals of GPS observations (van den IJssel et al., 2015). The daily RMS errors of ionosphere-free carrier phase residuals for Swarm A, B and C for one year of data from DoY 245, 2015 to 244, 2016 are shown exemplarily in Fig. 13. The average of the daily RMS errors are at the 4 mm level. As expected, the daily RMS errors of Swarm B are slightly smaller than for Swarm A and C. Swarm A and C show similar results. The RMS values show a decreasing trend with time, which could be related to the decreasing activity of ionosphere.
- 10 Comparing Swarm A and C in Sept. 2015, the significant improvement due to the update of bandwidth on Swarm C can be observed.

The comparison with reduced-dynamic orbits and the residuals of GPS observations is an internal validation of the orbits. Independent Satellite Laser Ranging (SLR) measurements provide another external validation of the orbits. The GPS-derived kinematic orbits are first interpolated with a polynomial of degree 5 to the observation time of SLR measurements. Then, the

15 computed ranges between the ground stations of tracking networks and GPS-derived kinematic orbits are compared with the



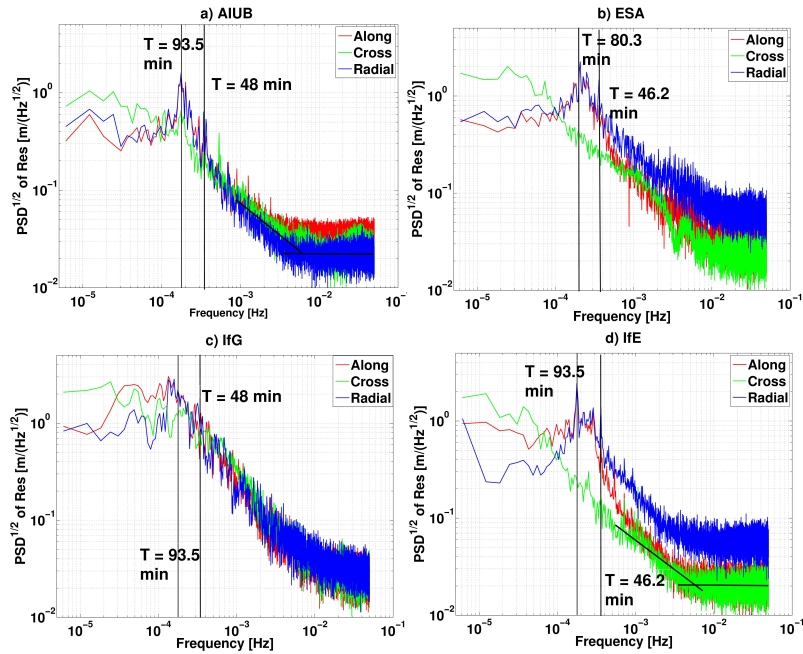
**Figure 11.** Differences of kinematic orbits w.r.t. ESA reduced-dynamic orbits of Swarm C of different institutes from DoY 1 to 7, 2016. The time series are intentionally shifted by 15, 5, -5 and -15 cm for AIUB (red), IfG (green), ESA (blue) and IfE (black), respectively. The legend gives the RMS in cm.

observed laser ranges. The coordinates of the ground stations are given in ITRF2014 (Altamimi et al. , 2016) with consideration of solid earth tide and ocean loading (FES2004 (Lyard et al. , 2006)). The positions of the laser reflector in the satellite reference frame are given in Astrium (2013). The tropospheric delay and relativistic effects are also corrected. Reflector-dependent range corrections are not applied. The SLR residuals for Swarm A, B and C from DoY 245, 2015 to DoY244, 2016 are shown in Fig. 14. The SLR residuals larger than 30 cm are excluded as outliers. The RMS errors of SLR residuals are at 3-4 cm level for our orbits and ESA kinematic orbits.

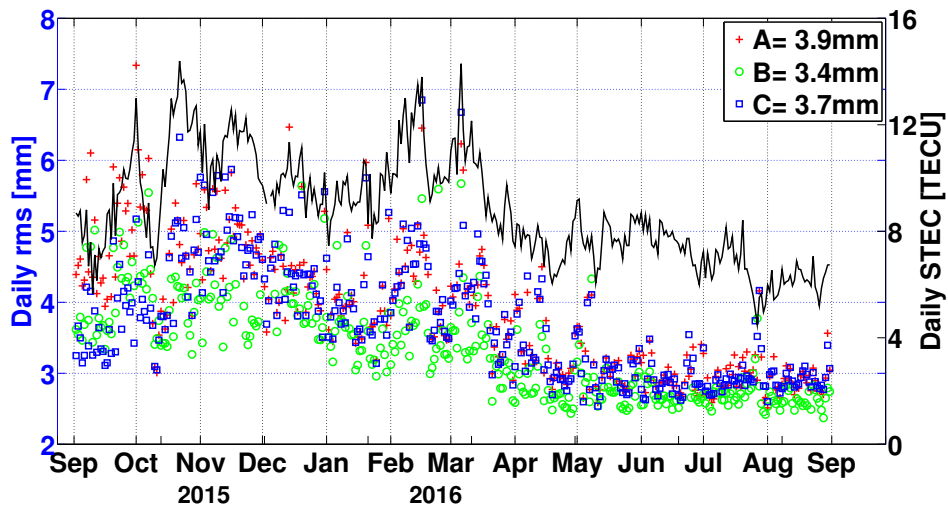
### 3.3 Covariance Information

The least-squares estimation provides not only the coordinates but also the variance-covariance information, which is important for gravity field recovery (Jäggi et al. , 2011). Usually, only the mathematical correlations between the coordinates at the same epoch are considered. But the carrier phase ambiguities also correlate coordinates over multiple epochs. The fully populated formal variance-covariance matrices for 30 hours PPP are computed with 30 s, 10 s and 1 s GPS observation data rate, respec-

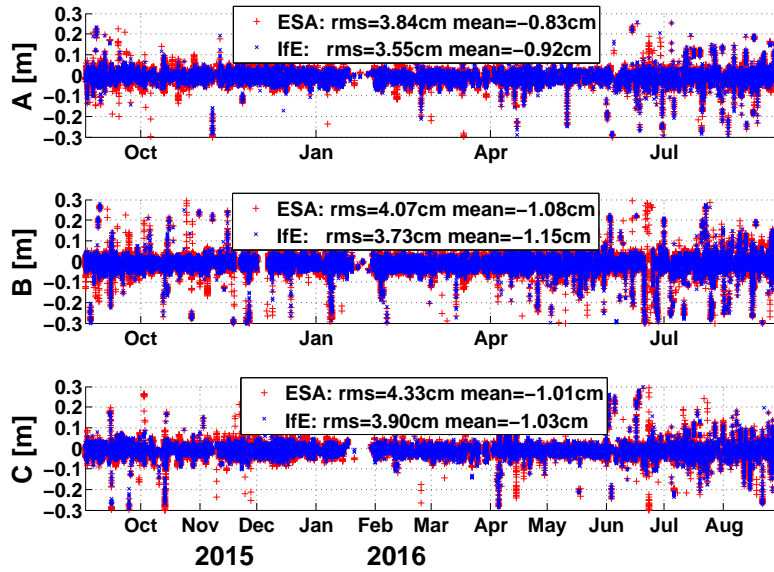




**Figure 12.** Spectral analysis of Swarm C orbits from and AIUB (a), ESA (b), IfG (c) and IfE (d) in March, 2016. Slope 0: white noise; slope -1: flicker noise.



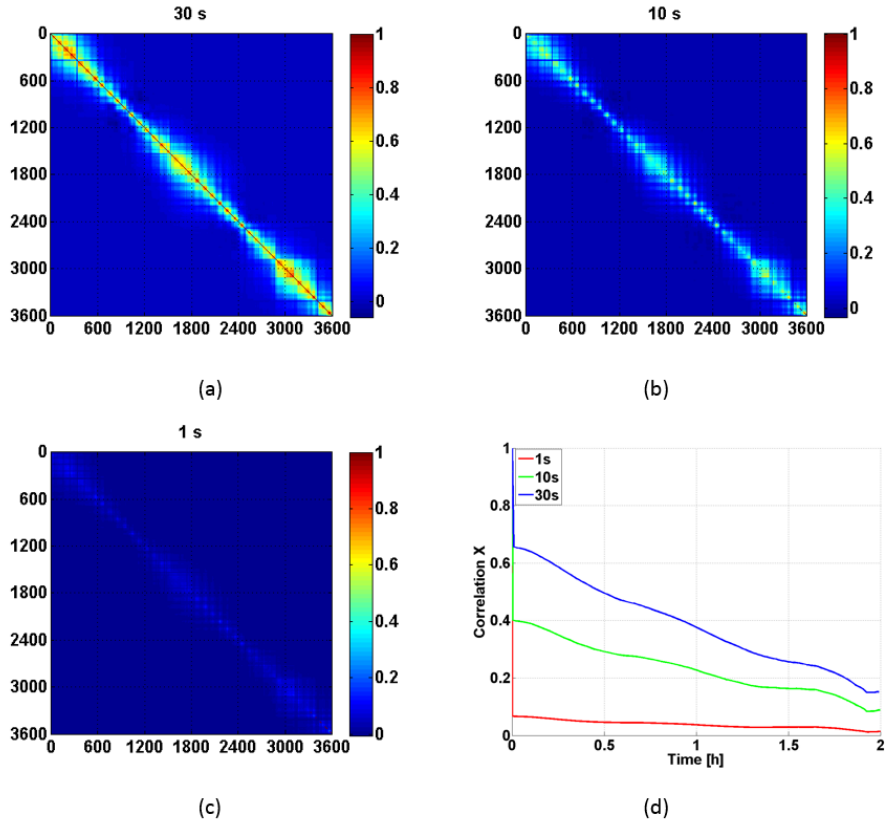
**Figure 13.** Daily RMS errors of ionosphere-free carrier phase residuals and daily average STEC derived from Swarm C over all GPS satellites for one year of data from DoY 245, 2015 to DoY 244, 2016.



**Figure 14.** SLR residuals over one year from DoY 245, 2015 to 244, 2016, for Swarm A (top), B (middle) and C (bottom). The residuals for IfE are given in blue and ESA kinematic orbits in red.

tively. For undifferenced 30 s and 10 s GPS observations, the covariance matrix can be directly computed from the inverse of the normal equation. However, due to computational limitation, the covariance of 1 s is computed epoch-wise by sequential inversion of block submatrices. For a better illustration of the covariance matrix, it is converted into a correlation matrix.

Figure 15 shows the corresponding correlation matrix of the Earth-fixed X-component for all 30 hours in the 30 s intervals. The X-coordinates of 30 s rate are strongly correlated at the polar areas (red spots) and the correlation decreases with time (Fig. 15a). The temporal mathematical correlation between two successive 30 s epochs is around 0.6. The correlation time varies between 0.5 and 2.5 hours and it shows a 24-hours variation, which is caused by the period of the GPS constellation. Due to the increased number of observations, the correlation for 10 s observations is much lower than for 30 s. The correlation between two successive epochs is only around 0.4. But it shows a pattern similar to 30 s observations (Fig. 15b). As expected, with increased observations frequency, the correlation for 1 s data rate is further decreased with a correlation between two successive epochs lower than 0.1 (Fig. 15c). Thus, the increase of data implies an increasing number of coordinates that are less correlated with the ambiguities, since no filter model is used in our PPP approach. The average correlation of X-components with time for the different rates is shown in Fig. 15d. The X-components are still correlated for 30 s data rate after 2 hours. For 10 s data rate, the average correlation is around 0.4 after 10 s and decrease smoothly to 0.1 after 2 hours. There is almost no mathematical correlation for 1 s data rate, the correlation drops immediately to 0.05 after 1 s. The correlation structure of the Earth-fixed Y-component is similar to the X-component.

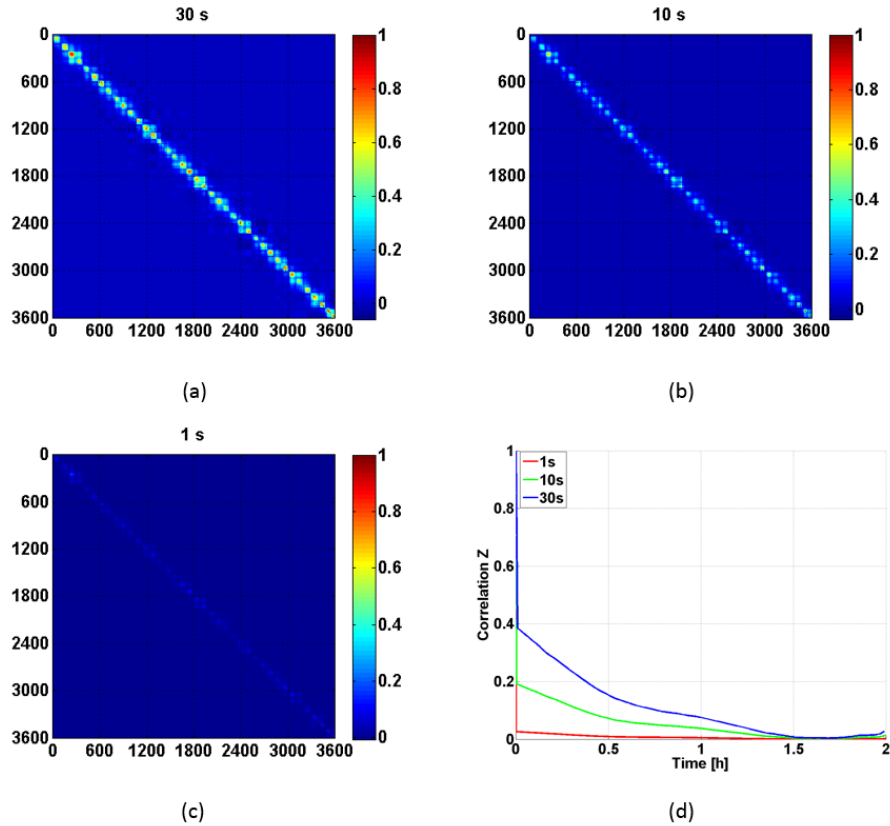


**Figure 15.** Correlation matrix for 30 hours time span in X-component obtained with a 30 s (a), 10 s (b) and 1 s (c) data rate. The identical epochs (30 s interval) are extracted from the respective correlation matrix. Subfigure (d) shows the mean correlation over 2 hours.

The correlation structures of the Z-component for 30 s, 10 s and 1 s data rates are shown in Fig. 16. The correlation between two successive epochs is similar to the X-component, around 0.4, 0.2 and below 0.1 for 30 s, 10 s, and 1 s data rates, respectively. However, the correlation times are much shorter than for the X-component, shown in Fig. 16. After an hour, the correlations can be neglected for 30 s and 10 s data rates.

## 5 4 Conclusions

In this contribution, we present the approach for determination of the IFE Swarm kinematic orbit with PPP. Since the GPS data quality is a prerequisite for the high quality of kinematic orbit, a thorough analysis was performed first. Although only 8 channels are available, the requirements for an accurate positioning are fulfilled. If the reacquisition time can be shortened, the tracking performance can be further improved. Carrier phase observations at both frequencies are strongly disturbed by ionospheric scintillations, where noise larger than 0.2 m degrades the detection of cycle slips. The approach is proposed, which



**Figure 16.** Correlation matrix for 30 hours time span in Z-component obtained with a 30 s (a), 10 s (b) and 1 s (c) data rate. The identical epochs (30 s interval) are extracted from the respective correlation matrix. Subfigure (d) shows the mean correlation over 2 hours.

allows a successful cycle slips repairing of around 95%. It is worth mentioning that almost all the cycle slips occur on  $L_2$  due to ionospheric scintillations.

Precise kinematic orbits at IfE are generated with the PPP method. The differences between our kinematic orbits and ESA reduced-dynamic orbits are at 1.5 cm, 1.5 cm and 2.5 cm level in along-track, cross-track and radial directions, respectively.

5 The daily RMS values of ionosphere-free carrier phase residuals are at 4 mm level, showing the good internal consistency. The spectral analysis of the orbits highlights the once per revolution period and higher harmonics as well as the dominant noise processes. A comparison with orbits from other institutes shows very good agreement in RMS level. A comparison with SLR underlines an accuracy of the kinematic orbits of 3-4 cm. Due to the ambiguities in carrier phase, the coordinates are correlated. The mathematical temporal correlation between two successive epochs is larger than 0.6 for 30 s data rate. The

10 correlation decreases with increased sampling frequency. For 1 s data rate, the correlation between two successive epochs is below 0.1.

*Author contributions.* TEXT

*Competing interests.* The authors declare that they have no conflict of interest

*Disclaimer.* TEXT

*Acknowledgements.* This project is part of CONTIM and funded by the Deutsche Forschungsgemeinschaft (DFG) under the SPP1788 Dynamic Earth which is gratefully acknowledged. We would like to thank ESA for providing Swarm data. The Swarm kinematic orbits have been made available by ESA, AIUB, and IfG, TU Graz. GPS orbits and clocks have been obtained from the Center for Orbit Determination in Europe (CODE). The SLR residuals are kindly provided by Dr. Anno Löcher of Institute of Geodesy and Geoinformation, University of Bonn. TU Delft is also very appreciated for providing the PCV maps. The support of all these institutions is gratefully acknowledged.

## References

- Altamimi, Z., Rebischung P., Métivier L., and Collilieux X., 2016. ITRF2014: A new release of the International Terrestrial Reference Frame modeling nonlinear station motions. *J. Geophys. Res. Solid Earth*, 121, 6109–6131, doi:10.1002/2016JB013098.
- Astrium GmbH, 2013. Swarm Instrument Positions in Spacecraft Coordinates, SW.TN.ASTR.SY.00012298, Issue 3.
- 5 Blewitt G., 1993. An automatic Editing Algorithm for GPS data, *Geophysical Research Letters*. 17(3), pp. 199-202.
- Bock, H., Dach, R., Jäggi, A., Beutler, G., 2009. High-rate GPS clock corrections from CODE: support of 1 Hz applications. *J. Geod.* 83 (11), 1083–1094. <http://dx.doi.org/10.1007/s00190-009-0326-1>.
- Buchert, S., Zangerl, F., Sust, M., André, M., Eriksson, A., Wahlund, J., Opgenoorth, H., 2015. Swarm observations of equatorial electron densities and topside GPS track losses. *Geophys. Res. Lett.* 42, 2088–2092. doi: 10.1002/2015GL063121.
- 10 Cai C., Liu Z., Xia P., and Dai W., 2013. Cycle slip detection and repair for undifferenced GPS observations under high ionospheric activity, *GPS Solutions* 17(2), pp.247-260. DOI: 10.1007/s10291-012-0275-7.
- Dach, R.; Schaer, S.; Arnold, D.; Orliac, E.; Prange, L.; Sušnik, A.; Villiger, A.; Jäggi, A., 2016. CODE final product series for the IGS. Published by Astronomical Institute, University of Bern. URL: <http://www.aiub.unibe.ch/download/CODE>; DOI: 10.7892/boris.75876.
- Dahle, C., Arnold D., Jäggi A., 2017. Impact of tracking loop settings of the Swarm GPS receiver on gravity field recovery. *Advances in Space Research* 59(2017), 2843–2854, <https://doi.org/10.1016/j.asr.2017.03.003>.
- 15 ESA, 2015. New GPSR settings on Swarm A and B satellites. <https://earth.esa.int/web/guest/missions/esa-operational-eo-missions/swarm/news/>. Accessed 29 October 2015.
- ESA, 2016. Swarm - Software issue in Rinx converter fixed. <https://earth.esa.int/web/guest/missions/esa-operational-eo-missions/swarm/news/>. Accessed 15 April 2016.
- 20 Estey, L. and Meertens, C., 1999. TEQC: The Multi-Purpose Toolkit for GPS/GLONASS Data. *GPS Solutions* (1999) 3: 42. <https://doi.org/10.1007/PL00012778>
- Friis-Christensen E., Lühr H., Knudsen D., and Haagmans R., 2008. Swarm - an earth observation mission investigating geospace. *Adv. Space Res.* 41(1), 210-216, <http://dx.doi.org/10.1016/j.asr.2006.10.008>.
- Hofmann-Wellenhof, B., Lichtenegger, H., Wasle, E., 2008. GNSS - Global Navigation Satellite Systems, Springer Vienna, p. 203, doi: 10.1007/978-3-211-73017-1.
- 25 IS-GPS-200H, 2013. Interface Specifications-Navstar GPS space segment/navigation user interfaces, URL <https://www.gps.gov/technical/icwg/IS-GPS-200H.pdf>.
- Jäggi, A., Prange, L., Hugentobler, U., 2011. Impact of covariance information of kinematic positions on orbit reconstruction and gravity field recovery. *Adv. Space Res.* 47 (9), 1472–1479. <http://dx.doi.org/10.1016/j.asr.2010.12.009>.
- 30 Jäggi, A., Dahle, C., Arnold, D., Bock, H., Meyer, U., Beutler, G., van den IJssel, J., 2016. Swarm kinematic orbits and gravity fields from 18 months of GPS data. *Adv. Space Res.* 57 (1), 218–233, <http://dx.doi.org/10.1016/j.asr.2015.10.035>.
- Lyard, F., Lefevre, F., Letellier, T., Francis, O., 2006. Modelling the global ocean tides: modern insights from FES2004. *Ocean Dyn.* 56 (5–6), 394–415. <http://dx.doi.org/10.1007/s10236-006-0086-x>.
- Melbourne WG., 1985 The case for ranging in GPS based geodetic systems. In: Proceedings of the 1st international symposium on precise positioning with the global positioning system, Rockville, ML, pp 373–386.
- 35 Schmid, R., Steigenberger, P., Gendt, G., Rotacher, M., 2007. Generation of a consistent absolute phase center correction model for GPS receiver and satellite antennas. *J. Geod.* 81 (12), 781-798. <http://dx.doi.org/10.1007/s00190-007-0148-y>.

- ESA Swarm L2 TEC Product Description. Doc. no: SW-TR-GFZ-GS-0007, Rev: 4, 2017-05-22.
- Švehla, D., Rothacher, M., 2003 Kinematic and reduced-dynamic precise orbit determination of low earth orbiters, in: *Advances in Geosciences*, 47-56, European Geosciences Union, doi: 10.5194/adgeo-1-47-2003, 2003
- van den IJssel, J., Encarnaç o, J., Doornbos, E., Visser, P., 2015. Precise science orbits for the Swarm satellite constellation. *Advances in Space Research* 56(6):1042-1055, doi:10.1016/j.asr.2015.06.002
- van den IJssel, J., Forte, B., Montenbruck, O., 2016. Impact of Swarm GPS receiver updates on POD performance. *Earth, Planets and Space*(2016) 68:85, doi: 10.1186/s40623-016-0459-4
- Wu J., Wu S., Hajj G., Bertiger W., and Lichten S., 1993. Effects of antenna orientation on GPS carrier phase, *Manuscripta Geodaetica* 18, pp. 91-91.
- 10 W ubben G, 1985 Software developments for geodetic positioning with GPS using TI 4100 code and carrier measurements. In: *Proceedings of the 1st international symposium on precise positioning with the global positioning system*, Rockville, ML, pp 403–412.
- Xiong, C., Stolle, C., L uhr, H., 2016. The Swarm satellite loss of GPS signal and its relation to ionospheric plasma irregularities. *Space Weather*, 14, 563–577, doi:10.1002/2016SW001439.
- Zangerl, F. Griesauer, M. Sust, O. Montenbruck, S. Buchert, Garcia A., 2014. SWARM GPS precise orbit determination receiver initial  
15 in-orbit performance evaluation. in: *Proceedings of the 27th International Technical Meeting of the Satellite Division of the Institute of Navigation (ION GNSS+)* Tampa, Florida, pp. 1459–1468.
- Zehentner, N., Mayer-G urr, T., 2015. Precise orbit determination based on raw GPS measurements. *J Geod* 90(3):275–286.  
<https://doi.org/10.1007/s00190-015-0872-7>
- Zumberge, J.F., Heflin, M.B., Jefferson, D.C., et al., 1997. Precise point positioning for the efficient and robust analysis of GPS data from  
20 large networks. *J. Geophys. Res.* 102 (B3), 5005-5017. <http://dx.doi.org/10.1029/96JB03860>.

**Table 1.** Update of Swarm carrier loop bandwidth

	Swarm A	Swarm B	Swarm C
Before 6 May 2015	$L_1$ : 10 Hz	$L_1$ : 10 Hz	$L_1$ : 10 Hz
	$L_2$ : 0.25Hz	$L_2$ : 0.25 Hz	$L_2$ : 0.25 Hz
6 May 2015			$L_1$ : 10 Hz->15 Hz
			$L_2$ : 0.25 Hz ->0.5 Hz
8 October 2015	$L_1$ : 10 Hz ->15 Hz		
	$L_2$ : 0.25 Hz ->0.5 Hz		
10 October 2015		$L_1$ : 10 Hz->15 Hz	
		$L_2$ : 0.25 Hz ->0.5 Hz	
23 June 2016			$L_2$ : 0.5Hz ->0.75Hz
11 August 2016	$L_2$ : 0.5Hz ->0.75Hz		$L_2$ : 0.75Hz ->1.0Hz



**Table 2.** Statistics of the cycle slips for Swarm A, B and C during one year from DoY 245, 2015 to DoY 244, 2016

Swarm	Total number	repaired number	on $L_1$	on $L_2$	repaired percentage
A	1284	1244	7	1237	96.7%
B	480	447	1	446	93.1%
C	1062	1027	4	1023	96.7%

**Table 3.** Summary of the measurement and error models used for Swarm kinematic orbit determination

Model	Description
GPS tracking data (30 hours)	undifferenced ionosphere-free code and phase
GPS ephemeris	CODE final GPS orbits and 5s clocks
GPS phase model	igs08.atx (week 1888) (Schmid et al. , 2007)
Swarm attitude	quaternion from star camera (Level 1b)
Swarm phase model	phase center offset (Level 1b) phase center variations map (van den IJssel et al. , 2016)
stochastic model	$\sin(Elev)/(\sigma_c)^2$ or $\sin^2(Elev)/(\sigma_c)^2, 1/(\sigma_p)^2$
a priori coordinates	Medium Accurate Orbit Determination MOD (Level 1b)
elevation cut-off angle	2°
ionospheric delay	ionosphere-free linear combination
phase wind-up	model (Wu et al. , 1993)
relativistic corrections	model (IS-GPS-200H , 2013) Shapiro effect(Hofmann-Wellenhof et al. , 2008)

**Table 4.** RMS and mean of position residuals of IfE and ESA kinematic orbits w.r.t. ESA reduced-dynamic orbits for Swarm A, B, C during one year (DoY 245, 2015 to DoY 244, 2016). The values for ESA kinematic orbits are given in brackets.

Swarm	RMS IfE (ESA) [cm]			Mean IfE (ESA)[cm]		
	Along	Cross	Radial	Along	Cross	Radial
A	1.67 (2.05)	1.41(1.87)	2.30 (2.66)	0.06 (-0.15)	0.19 (0.30)	0.12 (0.16)
B	1.47 (1.61)	1.25 (1.41)	1.84 (2.12)	0.05 (-0.14)	0.27 (0.26)	0.14 (0.11)
C	1.60 (1.90)	1.32 (1.61)	2.28 (2.55)	0.02 (-0.15)	0.21 (0.25)	0.07 (0.14)