

# Response to reviewers' comments on the manuscript angeo-2018-131-RC1 and RC2: Investigation of the relationship between the spatial gradient of total electron content (TEC) between two nearby stations and the occurrence of ionospheric irregularity

Authors: Teshome Dugassa, John Bosco Habarulema, and Melessew Nigussie

## General remarks

We appreciate the time and guidance of the anonymous reviewers whose suggestions have been very helpful during the correction of this manuscript. The responses to the comments are as follows:

## Referee #1

### General comments

1. **The authors did not discuss and explain well how the enhancement/reduction in spatial gradient of TEC is related to irregularities during geomagnetic storm. In Figure 5, they presented a good relationship between both parameters but did not really point out any mechanism that could have affected both. The only reason given so far as justification is the direction of IMF Bz.**

#### Response:

How the enhancement/reduction in spatial gradient of TEC is related to irregularities during geomagnetic storm was discussed (**Page 13: Line 29-36 and Page 16: Lines 1-5**).

2. **In my opinion, it is important that the authors explain the practical significance of the standard deviation of the spatial gradient of TEC over 15 min (as used in the methodology section) and why they used it? Is it kind of related to definition of ROTI?**

#### Response:

The observed spatial gradient of TEC show positive and negative values. To see the intensity of spatial gradient of TEC, it is important to apply the standard deviation of gradient of TEC. Yes, it is related to definition of ROTI. For the current study, we considered the standard deviation in the gradient of TEC over 15 min. In the future, we may investigate other time intervals over which the standard deviation should be taken so that the gradient of TEC correlate with ROTI. We have explained why we took standard deviation of the spatial gradient of TEC over 15 min (**Page 4: Lines 26-31**).

3. **Finally in the conclusion, I find that the statement "The spatial gradient of TEC/electron density near-solar terminator obtained from two nearby located GNSS receivers method may be an alternative method to estimate the strength of the zonal electric field" is a little premature and too general. The authors should just mention that a relation was observed between both quantities at some particular period of the day.**

#### Response:

As suggested by the reviewer, we modified the statement (**Page 22: Lines 19-20**).

### Listing of technical corrections

#### Specific comments

1. **Line 8. to the presence of enhanced eastward electric field was thought to control the generation of plasma density irregularities. Why was thought? It is established that the enhanced electric field is a crucial driver for irregularities generation.**

#### Response:

"was thought to control" is modified to "is a critical driver which control" (**Page 2: Line 8**).

2. **Line 24-25.** For accuracy I suggest you use ... “This inhomogeneity, i.e spatial plasma density/TEC gradient, varies significantly at low-latitude region because of .....”. Remember that magnetic storm over your region of interest have the tendency of suppressing irregularities more than enhancing them.

**Response:**

“is higher at low-latitude region” is modified to “varies significantly at low-latitude region” (**Page 2: Line 25**).

**Page 3**

3. **Line 2.** Remove gradient (repetition)

**Response:**

“gradient” is removed (**Page 3: Line 2**)

4. **Line 6.** Change attempt to have attempted,

**Response:**

“attempt” is changed to “have attempted” (**Page 3: Line 6**)

5. **Please change .. relating the latitudinal/longitudinal gradient of TEC/Plasma density..” to .... on the relationship between TEC gradient and the occurrence of ionospheric irregularities.**

**Response:**

“... relating the latitudinal/longitudinal gradient of TEC/Plasma density” is changed to .... “on the relationship between TEC gradient” (**Page 3: Line 19-20**).

6. **Lines 21-24.** I suggest the authors remove this part. They have already talked about the PRE earlier on in Page 2, line 9. They could even take this part (Page 3, Lines 21-24) to Page 2 (line 9) if they want.

**Response:**

As suggested the lines are removed.

7. **Remove the phrase in Lines 24-25.** What you need to do here is to emphasize on the fact that there is a lack of instrumentation for the direct investigation of the relationship between electron density gradient and occurrence of ionospheric irregularities over Africa and you have done that already. Just harmonize the statement for fluidity.

**Response:**

As suggested we have removed the lines and adjusted the statement (**Page 3: Lines 21-24**).

8. **Lines 28- 29.** [to examine the strength of the zonal electric field]. Closely located GPS can only help you get an insight into the behaviour of electric field especially at some particular period of the day. TEC is not only modulated by electric field, but by wind and solar radiation among others. If you want to examine directly the strength of electric field, you use magnetometers which the authors already did. So adjust that statement. I think what you want to say is that closely located GPS will help study the relation between gradient and electric field at post sunset.

**Response:**

We thank you for the suggestion. We adjusted the statement (**Page 3: Lines 25-29**).

9. **Page 4, Line 20.** I don’t understand what you mean by ... was computed **for every time**. What is your temporal resolution?

**Response:**

TEC data we have used has 1 minute resolution (**Page 4: Line 22**).

The computation of the spatial gradient of VTEC were carried out for epoch of time (1 to 1440 data points). The term “for every time” was used to indicate the epoch of time (**Page 4: Line 18**).

10. **Page 5 , line 26. It provides. What provides? Intermagnet or Amber or both? Adjust the statement.**  
**Response:**  
 “It provides” is changed to “Both of the instruments provide” (**Page 5: Line 28 - Page 6: Line 1**)
11. **Page 8, Line 17. Change was to is.**  
**Response:**  
 “was” is changed to “is” (**Page 8: Line 19**)
12. **Page 8, Line 20. Change correlate to correlates**  
**Response:**  
 “correlate” is changed to “correlates” (**Page 5: Line 21**)
13. **Page 9, Line 11. the positive/negative in the spatial gradient of TEC. Remove “in the”**  
**Response:**  
 “in the” is removed (**Page 9: Line 13**)
14. **Page 10, Line 31-31. Kindly removed this statement. “Sun et al. (2013) examined the relationship between the storm-enhanced plasma density (SED)-associated irregularities (ROTI) and TEC gradients over continental United States (CONUS) during the geomagnetic storms”. This mechanism has nothing to do with the low latitude ionosphere.**  
**Response:**  
 We have removed the statement as suggested.  
**Page 11**
15. **Line 4. Change could to can.**  
**Response:**  
 “could” is changed to “can” (**Page 11: Line 4**)
16. **Line 5. Remove dynamically**  
**Response:**  
 We than you for the suggestion. “dynamically” is removed as suggested.
17. **Page 12, Line 2. Change to....observed the steepest TEC gradient .....**  
**Response:**  
 “a most steep in” is changed to “the steepest” (**Page 12: Line 2**)  
**Page 13**
18. **Line 2-3. ....change “when the occurrence of ionospheric irregularity present (left panel) and absent (right panel)“ to ”during the occurrence of irregularities (left panel) and during their absence (right panel)“.**  
**Response:**  
 “when the occurrence of ionospheric irregularity present (left panel) and absent (right panel)“ is changed to “during the occurrence of irregularities (left panel) and during their absence (right panel)” (**Page 13: Lines 2-3**)
19. **Line 6. Change indicate to indicates**  
**Response:**  
 “indicate” changed to “indicates” (**Page 13: Line 6**)

20. **Line 8. Please what do you mean by occurrence of irregularities was present/ absent? Why not just use when irregularities were present /absent?**

**Response:**

“when the occurrence of irregularity present (Fig. 4, left panels) than when the occurrence of irregularity of irregularity absent (Fig. 4, right panels)” changed to “when irregularities were present (Fig. 4, left panels), left panels) than when irregularities were absent (Fig. 4, right panels)” (**Page 13: Lines 8-9**).

21. **Line 15 to 16. The density gradient controls the intensity of the PRE. This is not accurate. The PRE is generated through the interaction of zonal neutral wind in the F-region and the conductivity gradient caused by the terminator. The density gradient affects the R-T instability growth rate thus, the generation of irregularities (Ossakow, 1982; Mendillo et al., 1992 JGR)**

**Response:**

Thank you. As suggested we have modified the statement (**Page 13: Lines 15-17**).

22. **Line 22. Change to Figure 5 (a-d) illustrates typical examples of the .....**

**Response:**

“Figure 5 (a-d) illustrates examples” is changed to “Figure 5 (a-d) illustrates typical examples” (**Page 13 Line 22**).

23. **Line 24. Change are to is**

**Response:**

“are” is changed to “is” (**Page 13: Line 24**)

**Page 14**

24. **Figure 4. Replace showing by of.**

**Response:**

In Figure 4, “showing” is changed to “of”

25. **Line 3. Change are to is**

**Response:**

“are” is changed to “is” (**Page 16: Line 10**)

26. **Lines 10 to 11. Gradient in TEC is positive when TEC/electron density over ASAB is higher, and is negative when TEC/electron density over DEBK is higher. This is a repetition.**

**Response:**

As suggested “Gradient in TEC is positive when TEC/electron density over ASAB is higher, and is negative when TEC/electron density over DEBK is higher” is removed (**Page 17 Lines 3-4**).

27. **Page 15, Figure 5. Replace showing with of. Representative examples of .....**

**Response:**

In the caption of Figure 5, “Representative examples showing” is changed to “Representative examples of”

28. **Page 17, Line 3. Change “their correlation” to “the correlation”.**

**Response:**

“their correlation” is changed to “the correlation” (**Page 17: Line 31**)

29. **Page 19, Line 26, change covey to convey.**

**Response:**

“covey” is changed to “convey” (**page 21: Line 11**)

30. **Page 20, Line 1. Change present to presented**

**Response:**

“present” is changed to “presented” (Page 22: Line 1)

31. **Page 20, Line 4. What is summery? Do you mean summary?**

**Response:**

“summery” is changed to “summary” (Page 22: Line 3)

32. **Line 6. Add the year of your correlation.**

**Response:**

“in year 2014” is added (Page 22: Line 6)

33. **Line 7. Change was to were**

**Response:**

“was” is changed to “were” (Page 22: Line 7)

34. **Line 8. Change seasons and months to month and season**

**Response:**

“seasons and months” is changed to “month and season” (Page 22: Line 9)

35. **Line 11. Change are to were also**

**Response:**

“are” changed to “were also” (Page 22: Line 11)

36. **Line 16. Change are to was**

**Response:**

“are” is changed to “was” (Page 22: Line 16)

37. **Page 21, lines 2-3 I think it is a little bit premature to state that “The spatial gradient of TEC/electron density near-solar terminator obtained from two nearby located GNSS receivers method may be an alternative method to estimate the strength of the zonal electric field“. You could just report that you observed a relation between both and you mention the period when this relation was very obvious.**

**Response:**

As suggested, we adjusted the statement (Page 22: Lines 19-20).

## Referee #2

1. **Figure 4:** This figure shows a comparison of spatial gradient in TEC on days with/without irregularities. If you take a closer look at Figures 4b, 4c, 4d, , the spatial gradient ( $\sigma$ ) is around 0.5. These represent days with irregularities. On the other hand, Figures 4f, 4g, 4h represent days without ionospheric irregularities. But the value of the spatial gradient ( $\sigma$ ) is still around 0.5. But ROTI shows clear difference on days with/without irregularities. This brings into question the entire ability of the spatial gradient ( $\sigma$ ) to detect irregularities.

### Response:

The comments are very constructive.

**Figure 4** show a comparison of spatial gradient in TEC on days with/without irregularities. Yes, some kind of clarity is needed on the magnitude of  $\sigma(\Delta TEC/\Delta lon)$  in the presence/absence of ionospheric irregularities indicated by ROTI. When we investigate the relation between the spatial gradient of TEC and occurrence of ionospheric irregularities, we didn't present the threshold of  $\sigma(\Delta TEC/\Delta lon)$  when the occurrence of ionospheric irregularities is present/absent. In the presence of ionospheric irregularities, we have observed cases when the magnitude of  $\sigma(\Delta TEC/\Delta lon)$  are small. Investigating the threshold value of  $\sigma(\Delta TEC/\Delta lon)$  used as a proxy of irregularities will be considered in the future work.

To make clarity on the graphs, we have modified **Figure 4** (in the revised manuscript) such that one clearly observe examples comparing the spatial gradient in TEC represented by  $\sigma(\Delta TEC/\Delta lon)$  on days with/without irregularities. In these examples, the intensity level of  $\sigma(\Delta TEC/\Delta lon)$  is higher on the days with irregularities than without irregularities.

2. **Figures 3 and 4:**

**Figure 3** shows the variation of spatial gradient for 4 different days a) 30 March 2014, b) 10 April 2014, c) 20 September 2014 and d) 10 October 2014. **Figure 4(a-d)** also represent the same set of days. However the spatial gradient ( $\sigma$ ) looks entirely different in the 2 figures although they represent the same days. How is that possible?

### Response:

Thank you for the comments.

**Figure 3** shows the diurnal variation in the spatial gradient of TEC for 4 different days. **Figure 4**, on the other hand, illustrate examples of the standard deviation of spatial gradient of TEC  $\sigma(\Delta TEC/\Delta lon)$  for the same days of **Figure 3**. Yes, the two figures for the same days are different. These difference is due to the difference in the two parameters ( $\Delta TEC/\Delta lon$  and  $\sigma(\Delta TEC/\Delta lon)$ ) we have used.

In the revised manuscript, to elaborate the difference between the spatial gradient of TEC ( $\Delta TEC/\Delta lon$ ) and its standard deviation ( $\sigma(\Delta TEC/\Delta lon)$ ), we have modified **Figure 4** when the relation between  $\sigma(\Delta TEC/\Delta lon)$  and ROTI was clearly observed.

In this study, we have presented Examples on how spatial gradient in TEC and occurrence of irregularities are related (i) in the presence and absence of irregularity in **Figures 3 and 4**, and (ii) during disturbed days (**Figure 5**). We have also illustrated the relation between them using GPS-TEC data during 2014 (**Figures 3, 4, 5, 7, 8 and 9**). These Figures can lead us to relate spatial gradient in TEC and occurrences of ionospheric irregularities.

## List of all relevant changes made in the manuscript:

- Page 3 Lines 21-31 are modified.
- Page 13: Lines 29-35, Page 14: Lines 1-11, Page 15: Lines 1-15, and Page 16: Lines 1- 6 are added.
- Figure 4 is modified.
- Figure 6 is added in response to reviewer 1's comments.

# Investigation of the relationship between the spatial gradient of total electron content (TEC) between two nearby stations and the occurrence of ionospheric irregularity

Teshome Dugassa<sup>1,2</sup>, John Bosco Habarulema<sup>3,4</sup>, and Melessew Nigussie<sup>5</sup>

<sup>1</sup>Ethiopian Space Science and Technology Institute, Department of Space Science and Application, Addis Ababa, Ethiopia

<sup>2</sup>Bule Hora University, College of Natural and Computational Science, Department of Physics, Bule Hora, Ethiopia

<sup>3</sup>South Africa National Space Agency, Space Science, Hermanus, South Africa

<sup>4</sup>Department of Physics and Electronics, Rhodes University, Grahamstown, South Africa

<sup>5</sup>Washera Geospace and Radar Science Laboratory, Physics Department, Bahir Dar University, Bahir Dar, Ethiopia

**Correspondence:** Teshome Dugassa (tdugassa2016@gmail.com), John Bosco Habarulema (jhabarulema@sansa.org.za), Melessew Nigussie (melessewnigussie@yahoo.com)

**Abstract.** The relation between the occurrence of ionospheric irregularities and the spatial gradient of total electron content (TEC) derived from two nearby located stations (ASAB:4.34°N, 114.39°E and DEBK: 3.71°N, 109.34°E, geomagnetic), located within the equatorial region, over Ethiopia, during the post-sunset hours was investigated. Different instruments and techniques have been applied to study the behavior of ionospheric irregularities. In this study, the Global Positioning System (GPS) based derived TEC during the year 2014 obtained from the two stations were employed to investigate the relationship between the gradient of TEC and ionospheric irregularity occurrence. The spatial gradient of TEC ( $\Delta TEC/\Delta lon$ ) and its standard deviation over 15 min  $\sigma(\Delta TEC/\Delta lon)$  derived from GPS-TEC were used in this study. The rate of change of TEC derived indices ( $ROTI$ ,  $ROTI_{ave}$ ) are also utilized. Our results revealed that most of the maximum enhancement/reduction in  $\Delta TEC/\Delta lon$  are noticeable during the time period between 19:00 –LT and 24:00 LT hours. In some cases, the peak values in the spatial gradient of TEC are also observed during daytime and post-midnight hours. The enhancement in the intensity of  $\sigma(\Delta TEC/\Delta lon)$  observed after post-sunset show similar trends with  $ROTI_{ave}$ , and was stronger/weaker during equinoctial/solstice months. The observed enhancement in the intensity of  $\sigma(\Delta TEC/\Delta lon)$  in ~~equinoctial season show~~ the equinoctial season shows an equinoctial asymmetry where the March equinox was greater than September equinox. During post-sunset period, the relation between the spatial gradient of TEC/electron density obtained from two nearby located Global Navigation Satellite System (GNSS) receivers and equatorial electric field (EEF) was observed. The gradient in TEC and  $ROTI_{ave}$  observed during the evening time period ~~also show~~ shows similar trends with ~~equatorial electric field (EEF) – EEF~~ but after 1-2 hrs. The relationship between  $\sigma(\Delta TEC/\Delta lon)$  and  $ROTI_{ave}$  correlate linearly with correlation coefficient of  $C = 0.7975$  and  $C = 0.7915$  over ASAB and DEBK, respectively. The vast majority of the maximum enhancement/reduction in the spatial gradient of TEC observed during the evening time period may be associated with ionospheric irregularities/equatorial plasma bubbles. In addition to latitudinal gradients, the spatial/longitudinal gradient of TEC has a significant contribution to the computation of TEC fluctuations. ~~The spatial gradient of TEC/electron density near solar terminator obtained from two nearby located Global Navigation Satellite System (GNSS) receivers may be used as an alternative method to estimate the strength of~~

~~the zonal electric field.~~

**Key words:** Spatial gradient of TEC,  $ROTI_{ave}$ , ionospheric irregularities



## 1 Introduction

The ionosphere, which consists of free electrons and ions, frequently experiences irregular electron density. After sunset, the ionospheric plasma interchange instabilities present in the equatorial/low-latitude ionosphere generate large-scale depletions in the ambient electron density which leads to the formation of plasma density irregularities that affect radio communication and navigation system (Basu and Basu, 1981). The generation of the plasma irregularities can be related to the decrease in plasma production immediately after sunset and the fast recombination rate in the E-region ionosphere, which results in a steep electron density gradient. The large enhancement of ~~F-region~~F-region vertical plasma drift in the evening hours due to the presence of enhanced eastward electric field ~~was thought to~~is a critical driver which control the generation of plasma density irregularities (Fejer, 1991; Fejer et al., 2008). This pre-reversal enhancement (PRE) vertical plasma drift moves the ~~F-region~~F-region to higher altitudes (Abdu et al., 2009). When the altitude of F-region is high enough to overcome recombination effects, the Rayleigh-Taylor (R-T) instability mechanism initiates growth in plasma fluctuations. The R-T instability is considered ~~primary~~primarily responsible for the generation of ionospheric plasma density irregularities or plasma bubbles in the equatorial and low-latitude region (Rao et al., 2006a; Fejer et al., 1999). Kelley (2009) reported that the existence of equatorial plasma bubbles (EPBs) is attributed to the instability of the R-T plasma which is triggered by the intensification of the eastward equatorial electric field just before its reversal. The characteristics of ionospheric scintillation and ionospheric irregularities over the equatorial and low-latitude region in different longitudinal sectors during different solar and geomagnetic activities have been studied (e.g., Burke et al., 2004; Paznukhov et al., 2012; Oladipo and Schuler, 2013a; Seba and Tsegaye, 2015). Various instruments such as all-sky imager (Wiens et al., 2006), and very high-frequency radar observation (e.g., Otsuka et al., 2009; Ajith et al., 2016) have been used ~~utilized~~ to study the behavior of ionospheric irregularities and related scintillations. Recently, Global Navigation Satellite System (GNSS) signal analysis is an important tool to study the behavior of ionospheric irregularities (e.g., Pi et al., 1997; Nishioka et al., 2008; Watthanasangmechai et al., 2016; Magdaleno et al., 2017) because of its growing application in civilian and military applications.

The inhomogeneity of ionospheric electron distribution can cause sudden, rapid and irregular fluctuations of the amplitude and phase of the received signals, known as ionospheric scintillation (Wernik and Liu, 1974). This inhomogeneity, i.e, spatial plasma density/TEC gradient, ~~is higher~~varies significantly at low-latitude region because of geomagnetic storms, equatorial spread F (ESF) and Appleton ionospheric anomaly. As the GNSS signals pass through the ionosphere, the ionospheric irregularities also cause the delay of signals. The classification of the spatial electron density/TEC gradients can be given as latitudinal (north-south) and longitudinal (east-west) (Jakowski et al., 2004). It is normally found in the literature that the spatial plasma density gradients can be represented by means of TEC changes per latitude or longitude (TECU/deg) or by their changes in distance (TECU/km). In addition to causing an integrity threat for life-safety application to air traffic management (Luo et al., 2002; Lee et al., 2011; Rungraengwajjake et al., 2015), the ionospheric TEC gradient is also unfavorable for communication, and surveillance system which depends on trans-ionospheric signal propagation (Foster, 2000). Radicella et al. (2004) and Nava et al. (2007) also presented the contribution of the horizontal gradients of vertical TEC to positioning error. The characteristics of horizontal ionospheric density gradients and their effects on trans-ionospheric radio wave propagation have been studied at

different latitudes (Jakowski et al., 2005; Radicella et al., 2004). It has been reported that the majority of large/steep ~~gradient~~ TEC gradients are associated with equatorial plasma bubbles (Pradipta and Doherty, 2016). Rao et al. (2006a) estimated ionospheric spatial gradient from F-region peak electron density (NmF2) data using a chain of radio soundings. Based on the GNSS data acquired by ~~the~~ dense distribution of receivers over Brazilian longitude sector, Cesaroni et al. (2015) ~~highlights-highlight~~ the relationship between intensity and variability of TEC gradients and the occurrence of ionospheric scintillation.

Previous studies ~~attempt-have attempted~~ to explain the ~~relation-relationship~~ between the latitudinal (N-S) gradient of TEC surrounding the anomaly region and ionospheric scintillation over different sectors (Mendillo et al., 2001; Valladares et al., 2001; Rao et al., 2006b; Ray et al., 2006; Muella et al., 2008). Mendillo et al. (2001) pointed out that equatorial ionization anomaly (EIA) strength at sunset is the best available precursor for pre-midnight ESF. Using latitudinal distribution of TEC measurements at about 20:00 LT, Valladares et al. (2001) observed a high crest-to-trough ratio prevalent to ESF days. Recently, Seba et al. (2018) investigated the ~~relation-relationship~~ between equatorial ionization anomaly and night time ESF over East Africa longitudinal sector using data from ground-based Global Positioning System (GPS) stations and a horizontal meridional neutral wind model. To identify signals which severely suffer from ~~the~~ ionospheric gradient, Ravi Chandra et al. (2009) and Rungraengwajjake et al. (2015) used rate of change of TEC (ROT) and rate of change of TEC index (ROTI). From the definition, however, ROTI mixes both the spatial and temporal gradients of TEC variations. To show the relation between EIA and ESF, Seba et al. (2018) used ROTI and crest-to-trough ratio. Even though, the characteristics of ionospheric irregularities/plasma bubbles over equatorial/low-latitude region of Africa under different solar and geomagnetic activities ~~were-was~~ discussed (Seba and Tsegaye, 2015; Seba and Nigussie, 2016; Mungufeni et al., 2016; Kassa and Damtie, 2017; Olwendo et al., 2018; Bolaji et al., 2019; Dugassa et al., 2019), a limited number of studies have been carried out over the region ~~relating-the latitudinal/longitudinal gradient of TEC /plasma density-on the relationship between TEC gradient~~ and the occurrence of ionospheric irregularities.

~~The PRE-of eastward electric field-Gradient of electron density~~ is one of the ~~most important features-of the equatorial ionosphere which uplift the F-layer and create a conducive condition for irregularity formation under candidates which affects the growth rate of the R-T instability mechanism. The causes of the enhanced horizontal electric field have been discussed and modeled in several articles (e.g, Rishbeth, 1971; Farley et al., 2008; Eccles, 1998; Kelley et al., 2009). Longitudinal gradient of integrated Pederson conductivity that exist across sunset terminator affects the strength of PRE and instability and hence the generation of ionospheric irregularities (Tsunoda, 1985). However, it is not easy to obtain the longitudinal gradient of electron density over Africa longitude sector as radar, ionograms (Sultan, 1996). The magnitude of Pederson conductivity which can be estimated using electron density also has an effect on the growth rate. Over the African region, however, there is a lack of instrumentation (radar, ionosondes and/or incoherent scatter measurement are not available and study the relationship between the electron density gradient and-) to directly measure the gradient of electron density and investigate its relationship with~~ occurrence of ionospheric irregularities. It is generally known that TEC is the integral of electron density, ~~so closely located GPS receivers and the spatial gradient of TEC between close-by stations~~ would help us to examine ~~the strength of the zonal electric field and investigate the relation between the gradient of TEC and occurrence of its relation with ionospheric~~

irregularity. Investigating the relationship between the spatial gradient of TEC and the occurrence of ionospheric irregularity using ground GPS-TEC receiver from two nearby located stations is the aim of the current study. In this work, a closely located GPS stations will also help to study the relationship between the gradient of TEC and electric field during post-sunset. The relation between the daytime eastward equatorial electric field derived from the equatorial electric field (EEF) model and the daytime equatorial electrojet (EEJ) obtained from ~~ground-based~~ground-based magnetometer measurements were also discussed. The study is the first of its kind in the African sector to present the relation between the spatial gradient of TEC and the occurrence of ionospheric irregularities. The gradients of plasma density might be considered as an important parameter in the modeling of ionospheric irregularities and mitigating positioning errors on GNSS based application.

## 2 Data and analysis method

10 The GNSS data used for this study were obtained from University NAVSTAR Consortium (UNAVCO) database (<http://www.unavco.org/>). We used data from two receiver stations located in the East African region at Debarq (Geog. Lat. 13° N, Geog. Long. 37.65° E, Geomag Lat. 4.13° N) and Asab (Geog. Lat. 13° N, Geog. Long. 42.65° E, Geomag. Lat. 4.85° N) for the period 2014. The ~~receiver-independent-exchange~~Receiver-Independent Exchange (RINEX) observation files obtained from the IGS website were processed by the GPS-TEC application software developed at Boston College (Seemala and Valladares, 15 2011). The TEC analysis software uses the phase and code values for both L1 and L2 GPS frequencies to eliminate the effect of clock errors and tropospheric water vapor to calculate relative values of slant TEC (Sardón and Zarraoa, 1997; Arikan et al., 2008). In order to avoid the multipath effects, different authors have used observation data above certain cutoff mask ranging from 15° to 35° (Chu et al., 2005; Mushini and Pokhotelov, 2011). In the current study, an elevation cutoff mask of 30° was used for all the VTEC computed. Table 1 gives the list of all the stations for which data has been used in this study.

20 There are two independent ways of estimating the TEC gradient values using ~~ground-based~~ground-based GPS receiver data (e.g., Lee et al., 2007, 2010). The first method uses a pair of closely-spaced receiver stations, looking at the same GPS satellite to calculate the difference in TEC values between the two neighboring ionospheric piercing points (IPP) at any given time. The second method uses a single GPS receiver station to infer the spatial TEC gradient values based on the observed temporal rate of change in TEC. In the current study, we have applied the first method to obtain the spatial gradient of TEC. Using 25 the computed VTEC determined from the two receiver stations, the spatial gradient of TEC (difference of TEC between two stations per longitudinal separation) was computed for every epoch time and then we analyzed its diurnal, monthly and seasonal variations. The two stations are located nearly along the same geographic latitude with longitudinal separation of about ~ 5° or corresponding spatial separation of 535.7 km. Stations with the same latitude were selected to examine only the contribution of the longitudinal gradient of TEC to the generation of ionospheric irregularities expressed by ROTI. Vertical TEC (VTEC) 30 values obtained by averaging the VTEC over ~~30~~1 min intervals for a satellite and then averaged over all satellites in view are

used in the computation of the gradient of TEC. The spatial gradient of TEC utilized in this study ~~were~~was computed using Eq. (1) (Lee et al., 2007; Ravi Chandra et al., 2009; Cesaroni et al., 2015).

$$\text{Spatial gradient of } TEC(t_i) = \frac{VTEC_{asab}(t) - VTEC_{debk}(t)}{\Delta lon} \frac{VTEC_{asab}(t_i) - VTEC_{debk}(t_i)}{\Delta lon} = \frac{\Delta TEC}{\Delta lon} \frac{\Delta VTEC}{\Delta lon} \quad (1)$$

where  $i = 1$  to  $1440$ , and  $\Delta lon$  represents the difference in the longitude between the two stations. To detect the presence of plasma density irregularities, using ground and space-based TEC/plasma density measurements different authors presented different techniques. For example, Pi et al. (1997) applied the standard deviation of ROT over 5 min to characterize the occurrence of ionospheric irregularities. For in situ electron density measurements, Su et al. (2006) and Huang (2018) used the standard deviation of ion density variations over 10 s as indicator of ESF occurrence. Cesaroni et al. (2015) used the standard deviation of gradient of TEC to indicate the variability of the gradients. In this study, we applied the standard deviation of the spatial gradient of TEC over 15 min,  $\sigma(\Delta TEC/\Delta lon)$ , to examine the ~~relation~~relationship between spatial gradient (zonal or E-W gradients) of TEC and occurrence of ionospheric irregularities.

The time variation of TEC also known as rate of change of TEC (ROT) and its derived indices are a good proxy for the phase fluctuation, which is a measure of large-scale ionospheric irregularities (Aarons et al., 1997) were used in this study. These kinds of indices can be used to characterize all the known features of equatorial spread F (ESF) (Mendillo et al., 2000). The rate of change of TEC (ROT) is given by

$$ROT = \frac{TEC_k^i - TEC_{k-1}^i}{t_k^i - t_{k-1}^i} \quad (2)$$

where  $i$  is the visible satellite and  $k$  is the time of epoch and ROT is in units of TECU/min. The ROTI is defined as the standard deviation of ROT over a 5-min period and mathematically given by Eq. (3) (Pi et al., 1997; Bhattacharyya et al., 2000; Nishioka et al., 2008). Usually, ROTI > 0.5 TECU/min indicates the presence of ionospheric irregularities at scale lengths of a few kilometers (Ma and Maruyama, 2006).

$$ROTI = \sqrt{\langle ROT^2 \rangle - \langle ROT \rangle^2} \quad (3)$$

Oladipo and Schuler (2013b) employed the idea of Mendillo et al. (2000) to obtain a new index called  $ROTI_{ave}$  index given in Eq. (4).  $ROTI_{ave}$  index is the average of ROTI over 30 min interval for a satellite and then averaged over all satellites in view. The index gives the average level of irregularities over half an hour. Recently,  $ROTI_{ave}$  has been applied to demonstrate and explain the level of ionospheric irregularities over the low-latitude/equatorial region of Africa (Oladipo et al., 2014; Bolaji

et al., 2019; Dugassa et al., 2019). In this study, the rate of TEC fluctuation index (ROTI) and  $\langle ROTI_{ave} \rangle$  (Pi et al., 1997; Oladipo and Schuler, 2013b; Oladipo et al., 2014) were used to observe the occurrence of ionospheric irregularities.

$$ROTI_{ave}(0.5hr) = \frac{1}{N} \sum_{n=1}^N \sum_{i=1}^k \frac{ROTI(n, 0.5hr, i)}{k} \quad (4)$$

where  $n$  is the satellite number,  $0.5hr$  is half an hour (0, 0.5, 1, ... 23.5, 24 UT),  $i$  is the 5 min section within half an hour ( $i = 1, 2, 3, 4, 5, 6$ ),  $N$  is the number of satellites observed within half an hour and  $k$  is the number of ROTI values available within half an hour for a particular satellite. According to Oladipo and Schuler (2013b), the value of  $ROTI_{ave} < 0.4$ ,  $0.4 < ROTI_{ave} < 0.8$  and  $ROTI_{ave} > 0.8$ , respectively represents the background fluctuation, existence of phase fluctuation, and severe phase fluctuation activities. These threshold values were used to observe the relation between the occurrence of ionospheric irregularities and the spatial gradient of TEC.

The magnetic data used in this study are obtained from International Real-Time Magnetic Observatory Network (INTERMAGNET) and Africa-Meridian B-field Education and Research (AMBER) magnetometers installed in Addis Ababa (AAE, 9.0° N, 38.8° E, 0.2° N, geomagnetic) and Adigrat (ETHI, 14.3° N, 39.5° E, 6.0° N, geomagnetic), respectively. Both of the instruments provide one-minute values of the northward (X), eastward (Y), vertical (Z) components of the Earth's magnetic field, from where the horizontal component (H) is computed using Eq. (5).

$$H = \sqrt{X^2 + Y^2} \quad (5)$$

To avoid different offset values of different magnetometers, the nighttime baseline values in the H component (Eq. 6) are first obtained for each day and subtracted from the corresponding magnetometer data sets to obtain the hourly departure of H denoted  $\Delta H$  expressed by Eq. (7). The baseline value was defined as the average of the H component night time (23:00 - 02:00 LT) value of the Earth's magnetic field.

$$H_o = \frac{H_{23} + H_{24} + H_{01} + H_{02}}{4} \quad (6)$$

where  $H_{23}$ ,  $H_{24}$ ,  $H_{01}$ , and  $H_{02}$  are respectively the hourly values of H at 23:00, 24:00, 01:00 and 02:00 in local time (LT).

$$\Delta H(t) = H(t) - H_o \quad (7)$$

where  $t$  is the time in hours ranging from 01:00 to 24:00 LT. The hourly departure  $\Delta H$  is then corrected for the non-cyclic variation using (Eq. 8). This correction was proposed previously by Rastogi et al. (2004) who defined non-cyclic variation as a phenomenon in which the value at 01:00 LT is different from that of local midnight (24:00 LT).

$$\Delta c = \frac{\Delta H_{01} - \Delta H_{24}}{23} \quad (8)$$

The hourly departure of H ( $\Delta H$ ) corrected for the non-cyclic variation corresponding to [the](#) magnetometer data set gives the solar quiet variation (Sq) values as shown in Eq. (9):

$$Sq(t) = \Delta H(t) + (t - 1) * \Delta c \quad (9)$$

where  $t = 1$  to 1440.

5 The equatorial electrojet current (EEJ) produces a strong enhancement in the H-component magnetic field measured by magnetometers located within  $\pm 5^\circ$  of the magnetic equator. Measurements of this magnetic field perturbation in equatorial magnetometers could provide a direct measure of the daytime equatorial electrojet (EEJ) and have strong relationships with dayside vertical velocity ( $\mathbf{E} \times \mathbf{B}$  drift) (Anderson et al., 2004, 2006; Yizengaw et al., 2012). The equatorial stations respond primarily to the EEJ and also to the ring current and the global quiet time Sq current system. However, ground magnetometers  
10 just outside the extent of the EEJ ( $\sim 6^\circ - 9^\circ$ , off the dip equator) exhibit exact response to the ring and Sq currents, but near-zero response to the EEJ. To obtain the contribution of H-component field to the EEJ current, we subtract the H-component value recorded at the off the equator ( $\sim 6^\circ - 9^\circ$  geomagnetic) from H-component value measured at the magnetic equator, using Eq. (10). The subtraction has been made to remove the contribution of the ring current and global Sq dynamo from the H-component.

$$15 \quad \Delta H = \Delta H_{AAE} - \Delta H_{ETHI} \quad (10)$$

where  $\Delta H_{AAE}$  and  $\Delta H_{ETHI}$ , respectively, show the hourly departure of H over Addis Ababa and Adigrat, .

**Table 1.** Location information and the type of data used in this study.

Name of stations	Code	Geo. lon	Geo. lat	Geom. lon	Geom. lat	Data
Asab, Eritrea	ASAB	42.65° E	13° N	114.34° E	4.85° N	GPS-TEC
Debark, Ethiopia	DEBK	37.65° E	13° N	109.24° E	4.13° N	GPS-TEC
Addis Ababa, Ethiopia	AAE	38.77° E	9.04° N	110.47° E	0.18° N	Magnetometer
Adigrat, Ethiopia	ETHI	39.46° E	14.28° N	111.06° E	5.80° N	Magnetometer

The other data source used in this study is the Real-time model of the Ionospheric Electric Fields (<http://geomag.org/models/PPEFM/RealtimeEF.html>). The Prompt Penetration Electric Field Model (PPEFM) (Manoj and Maus, 2012) is a transfer function model which models the daily variations coming from the solar wind, which are mapped in the interplanetary electric  
20 field (IEF) data. Eight years IEF data from the ACE satellite, radar data from Jicamarca Unattended Long-Term studies of

the Ionosphere and Atmosphere (JULIA) system, and magnetometer data from the CHAMP satellite ~~were have been~~ used to derive the transfer function. ~~Using~~ By using the real-time data from the ACE satellite, the transfer function models the current variations in the equatorial ionosphere. ~~The~~ To calculate the best estimates of equatorial electric field, the model takes time and location as input parameters ~~and calculates the best estimates of the equatorial electric field~~. The model outputs provide the  
5 electric field generated as a result of the convective electric field, quiet time electric field, and both. In the present study, we have used ~~only~~ the background quiet-time electric field to examine the relation between the equatorial electric field (EEF) and the spatial gradient of TEC derived from the two nearby stations. To have a rough idea about the PPEFs during storm days, we have also used the quiet-time and penetration electric field.

The real-time model of electric field ~~have has~~ been used for different case studies over different sectors to observe the influ-  
10 ence of prompt penetration electric field (PPEF) on the variations of total electron content and the occurrence of ionospheric irregularities (Nayak et al., 2017; Dugassa et al., 2019). However, this model has not been applied yet to explain the electrodynamic phenomena over African low-latitude region. To use the PPEF model in this region, we presented its relationship with equatorial electrojet (EEJ), an indicator of the eastward electric field, during the daytime period over the equatorial region of Africa based on ground-based magnetometer measurements (Rastogi and Klobuchar, 1990; Anderson et al., 2002; Yizengaw  
15 et al., 2014). Over East Africa longitude, two magnetometer stations, one at Adigrat (ETHI, 14.3° N, 39.5° E, 6.0° N, geomagnetic) and the other at Addis Ababa (AAE, 9.0° N, 38.8° E, 0.2° N, geomagnetic) exist. ETHI and AAE stations ~~belong to AMBER network form part of AMBER~~ (Yizengaw and Moldwin, 2009) and INTERMAGNET networks, respectively. It has been reported that the strength of EEJ before sunset has a correlation with the generation of ESF during nighttime period preceded by a rise in the F-region (Dabas et al., 2003; Uemoto et al., 2010; Ram et al., 2007). The relation between the EEF  
20 obtained from the real-time electric field model and  $\Delta H$  were determined. The EEF derived from the real-time electric field model were used in this study to explain the influence of the equatorial electric field on nighttime variations of the spatial gradient of TEC and the occurrence of ionospheric irregularities. The temporal resolution of EEF was 5 min and that of  $\Delta H$  was 1 min. To make their resolution consistent, 5 min average of  $\Delta H$  of each of the selected quiet days were computed. In this study,  $\Delta H$  derived from the H-component of the geomagnetic field of the two stations during quiet days of the year 2012  
25 were used. In this year, we have a large number of magnetometer measurements relative to other years. From each month of the year 2012, the five quiet international days (total of 38) obtained from (<http://wdc.kugi.kyoto-u.ac.jp/qddays/index.html>) were selected to show the correlation between  $\Delta H$  and EEF. Since the EEJ is a day time phenomenon, only the daytime values of EEF and  $\Delta H$  during (07:00 to 17:00 LT) were examined.

### 3 Results and Discussions

#### 30 3.1 Relation between the day-time Equatorial Electrojet (EEJ) and Equatorial Electric Field Model (EEFM)

Figure 1a presents the diurnal variation of EEF and EEJ current signature of H-component of geomagnetic field on 26 March 2012. As can be seen in Figure 1a, during the daytime period (07:00 - 17:00 LT), the  $\Delta H$  and EEF show similar trends. The

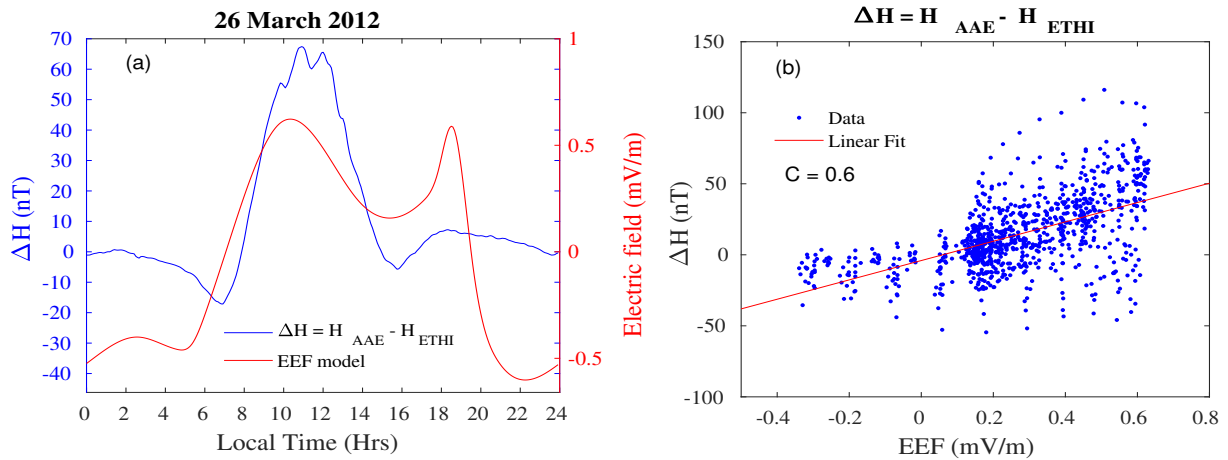
relationship between the strength of daytime EEJ derived from  $\Delta H$  and EEF obtained from equatorial electric field model ~~was is~~ shown in Figure 1b. To show the reliability of ~~the~~ EEF model over ~~the~~ East African sector, we presented the relationship between  $\Delta H$  and EEF for five (5) international quiet days of each month of ~~the~~ year 2012. In the analysis, we considered the daytime (07:00 - 17:00 LT) value of  $\Delta H$  and EEF. As depicted in Figure 1b, during ~~the~~ daytime period, the  $\Delta H$  ~~correlate~~ correlates positively and linearly with EEF with ~~the~~ correlation coefficient,  $C = 0.60$ . Manju et al. (2012) obtained an excellent agreement with observations at the Indian and South American sectors. Different techniques have been utilized to estimate the ionospheric electric field (e.g., Hysell and Burcham, 2000; Anderson et al., 2002; Alken et al., 2013; Dubazane and Habarulema, 2018). Anderson et al. (2002) proposed  $\Delta H$  deduced from ground-based magnetometers as a proxy of equatorial electrojet current. They reported that the vertical plasma drifts observed from Jicamarca incoherent scatter radar (ISR) has a positive and linear relation with  $\Delta H$  and henceforth the  $\Delta H$  was widely taken as a ~~substitution~~ proxy substitute for the EEF. Anderson et al. (2006) and Yizengaw et al. (2011) also reported a strong relation between the dayside vertical velocity ( $E \times B$  drift) and  $\Delta H$ . Alken et al. (2013), on the other hand, estimates the EEF using CHAMP satellite derived latitudinal current profiles of daytime EEJ along with  $\Delta H$  measurements from ground magnetometer stations and they showed that any pair of ground magnetometer stations capture the day-to-day strength of the EEJ.

The daytime eastward equatorial electric field (~~EEF~~) in the ionospheric E-region plays an important role in equatorial ionospheric dynamics. It is responsible for driving the EEJ current system, equatorial vertical ion drifts, and the equatorial ionization anomaly. The EEJ is a strong ionospheric current along the magnetic equator driven by the ~~day-side~~ dayside eastward electric field. Studies also show that the daytime electrodynamics play a decisive role in the initiation of post-sunset ESF (e.g., Mendillo et al., 2001; Valladares et al., 2001, 2004). The connection between the occurrence of ESF during the evening sector preceded by the rapid rise in F-layer and the strength of EEJ before sunset has been presented (Dabas et al., 2003; Burke et al., 2004; Kelley, 2009; Uemoto et al., 2010; Ram et al., 2007). Sreeja et al. (2009) reported observational evidence for the plausible linkage between the daytime EEJ related electric field variations with the ~~postsunset~~ post-sunset F-region electrodynamics. Furthermore, Hajra et al. (2012) indicate that the afternoon/evening time variation of the eastward electric field as revealed through EEJ seems to play a dominant role in dictating ~~postsunset~~ post-sunset resurgence of EIA and consequent generation of spread-F irregularities. Since the equatorial electric field derived model (EEF) correlate moderately with  $\Delta H$  over East Africa longitudinal sector, we could use the real-time EEF model over ~~the~~ equatorial/low-latitude region of Africa to explain some special features of ionospheric phenomena like plasma density irregularities and the positive/negative ~~in-the~~ spatial gradient of TEC between the two stations.

### 3.2 Relation between the equatorial electric field (EEF), the spatial gradient of TEC and occurrence of ionospheric irregularity

Figure 2 (a-l) shows the diurnal variation of the quiet-monthly mean of ~~the~~ spatial gradient of TEC (blue curves) and EEF (along  $\sim 40^\circ$  E) (red curves) in the year 2014. We superimpose EEF and spatial gradient in TEC to observe the effect of EEF on the variability of the gradient in TEC and/or occurrence of ionospheric irregularities. In the computation of the spatial

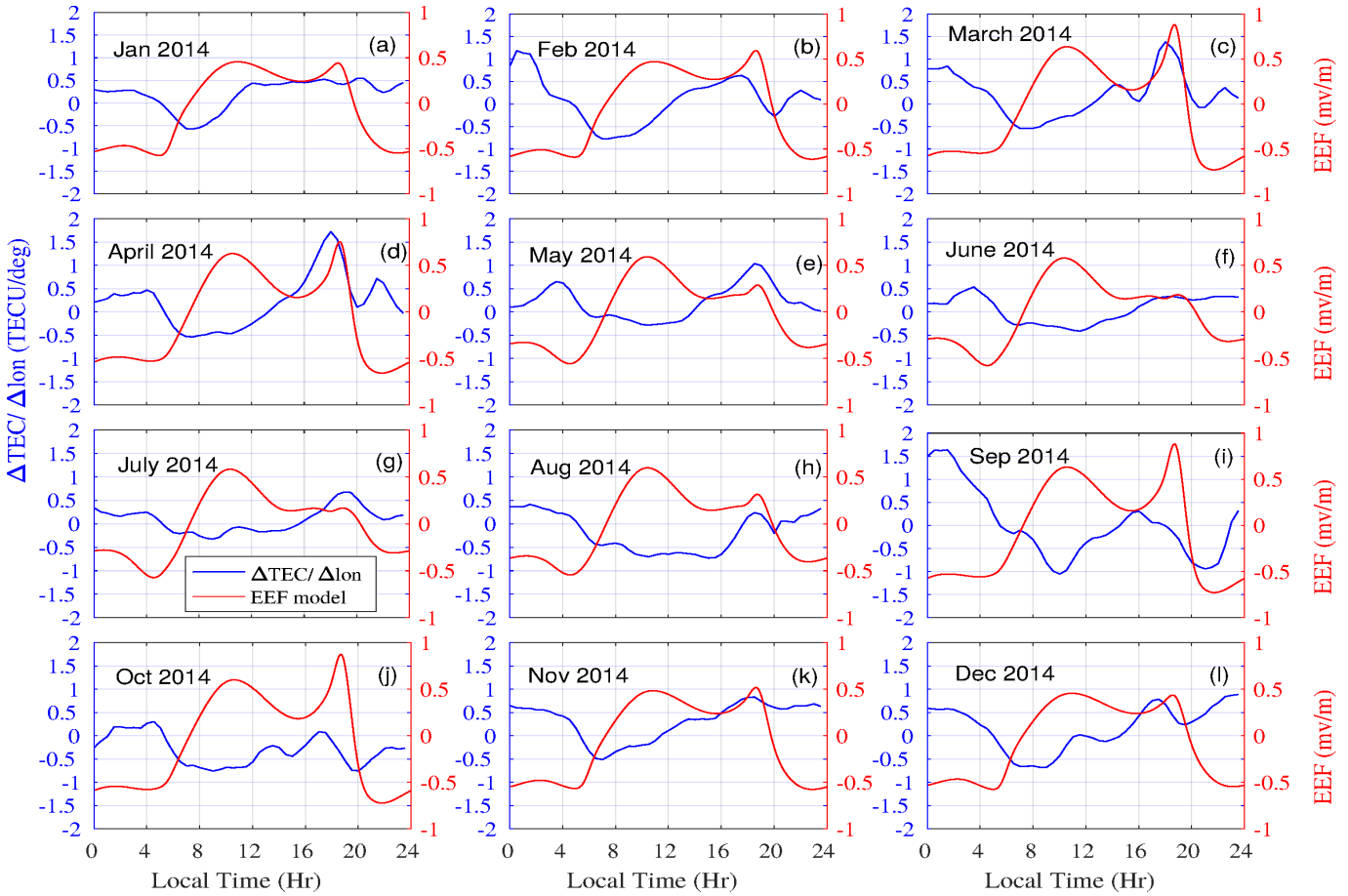




**Figure 1.** (a) Example showing the diurnal variation of Equatorial Electric field (EEF) Model (red curve) and  $\Delta H$  (blue curve) during 26 March 2012 and (b) The correlation between the equatorial electrojet (EEJ) and quiet-time equatorial electric field model (EEF) during day-time (07:00-17:00 LT) period for quiet days of year 2012. The red line shows the linear fit of data points.

gradient of TEC (using Eq. 1), negative/positive values in the gradient of TEC may be observed during the nighttime or day-time. Both the negative and positive differences of TEC between the two stations show the gradient of TEC. ~~It is obvious that positive/negative gradient in TEC is obtained when the minuend is larger/smaller than the subtrahend.~~ A positive/negative gradient in TEC denotes an enhancement/reduction in TEC or electron density over ASAB relative to DEBK. Gradient in TEC is positive when TEC over ASAB is greater and is negative when TEC over DEBK is greater. This difference may be attributed to different physical processes, like neutral winds and plasma drift. In this study, the term maximum enhancement/reduction in the gradient of TEC (in terms of magnitude) were used when the nighttime value of gradient of TEC was larger than the daytime value. There were also cases when the gradient in TEC during the daytime was greater than ~~high-time-nighttime~~ values. It can be seen from Figure 2 (red curves) that around evening hours, enhancement in EEF were observed in the equinoctial months and was relatively weak during the June and December solstices. It has been stated that an enhanced eastward electric field will be produced from the electrodynamical interaction of the eastward thermospheric wind with the geomagnetic field around the dip equator at the sunset terminator when longitudinal gradient conductivity ~~exist-exists~~ between the high-conducting ~~day-side-dayside~~ ionosphere and the low-conducting night side ionosphere (Batista et al., 1986; Heelis et al., 1974). Most of the enhancement/reduction in the TEC gradient was observed in the pre-midnight (19:00 - 24:00 LT) and postmidnight (24:00 - 06:00 LT) but after 1-2 hr of the post-sunset enhancement of the equatorial electric field. During the nighttime period, the maximum enhancement/reduction in ~~the~~ spatial gradient of TEC ~~was~~ found mostly in the range between 5.0 TECU/deg and -5.0 TECU/deg. A variation in the spatial gradient of TEC observed in the pre-midnight may be due to the plasma bubbles (Ratnam et al., 2018). In some days, the spatial gradient of TEC observed during the daytime was relatively small compared to the evening time hours. The maximum enhancement/reduction in the gradient of TEC and the peak in the EEF observed during the pre-midnight period was significant during the equinoctial months. After post-sunset period, the maximum enhance-

ment/reduction in the gradient of TEC in solstice months was small compared to equinoctial months, when PRE electric field observed in the evening period was minimum. Yoshihara et al. (2005) ~~confirm~~ confirmed the larger ionospheric gradients during summer and followed by autumn. The ionospheric gradients are less during winter as compared to summer and autumn. The enhancement/reduction in the gradient of TEC observed in the evening period could be related to the PRE in a zonal electric field.



**Figure 2.** Comparison of Quiet-Monthly Mean of EEF derived from real-time electric field model at about ( $\sim 40^\circ$  E) and spatial gradient of TEC between ASAB and DEBK in the year 2014.

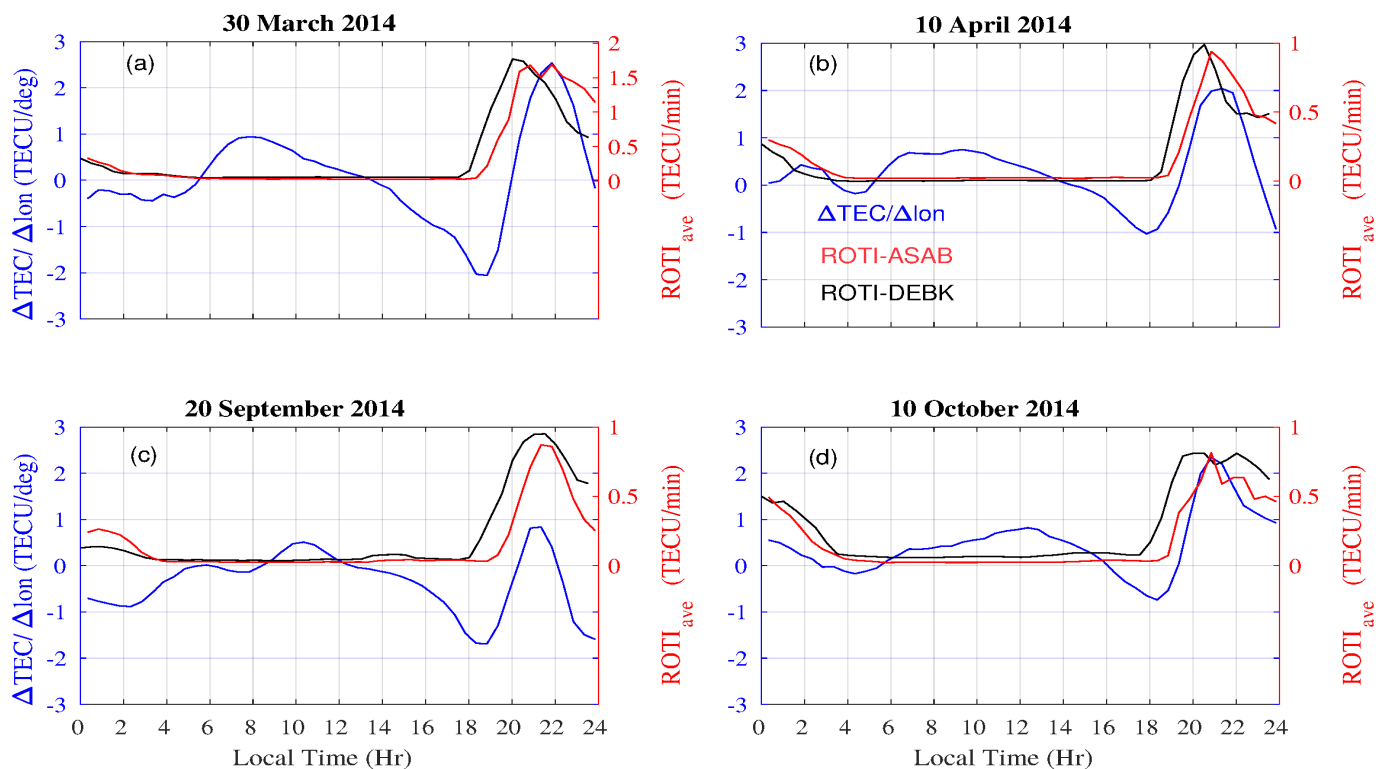
Figures 3 (a - d) shows the diurnal variation of the spatial gradient of TEC (blue curve) and  $ROTI_{ave}$  (red and black curves) over ASAB and DEBK stations. The  $ROTI_{ave}$  values in each panel was greater than 0.4 TECU/min, a threshold value showing the presence of irregularities in the pre-midnight hours. Likewise, maximum enhancement/reduction in the gradient of TEC ~~were observed during~~ was observed during the pre-midnight and post-midnight periods. It is evident from Figure 3 during nighttime period (after 18:00 LT) that the pattern of ROTI (observed in both stations) and the spatial gradient in

TEC show a kind of similar trend. Different researchers used the concept of ionosphere spatial gradient based on multi-GNSS observations within a small scale region to provide corrections and integrity information to the Ground-Based Augmentation System (GBAS) (Rungraengwajiake et al., 2015; Saito and Yoshihara, 2017). They attribute the large ionosphere spatial gradient to the TEC enhancements and the ionosphere irregularities. Saito and Yoshihara (2017) associated spatial gradient in ionospheric TEC with plasma bubbles. ~~Sun et al. (2013) examined the relationship between the storm-enhanced plasma density (SED)-associated irregularities (ROTI) and TEC gradients over continental United States (CONUS) during the geomagnetic storms.~~ Rungraengwajiake et al. (2015) analyzed plasma bubbles at postsunset equinox time and observed the higher scales in east-west gradient compared with north-south gradients for GBAS system, however, Cesaroni et al. (2015) reported that the north-south gradient in TEC correlates well with ionospheric scintillation than the east-west gradient of TEC. The plasma density variability, either the spatial and/or temporal, causes not only the GNSS-based positioning error but also radio wave scintillation.

The maximum enhancement/reduction in the gradient of TEC and the associated ionospheric irregularity during the post-sunset period ~~could~~ can be explained by ionospheric electrodynamics. It is well known that Earth's equatorial ionosphere presents ~~dynamically~~ temporal and spatial variations. The electrodynamics of low-latitude ionosphere after sunset is influenced by F-region dynamo which is governed by a longitudinal gradient of the electrical conductivity and thermospheric zonal wind (Crain et al., 1993). Anderson et al. (2004) showed that the scintillation activity is related to the maximum  $\mathbf{E} \times \mathbf{B}$  drift velocity between 18:30 LT and 19:00 LT. Mendillo et al. (2001) have pointed out that the best available precursor for the pre-midnight equatorial spread F (ESF) is the equatorial ionization anomaly (EIA) strength at sunset, which is in turn influenced by the magnitude of PRE. Using differential TEC profiles, TEC (at 18:00 hr) - TEC (at 20:00 hr), Valladares et al. (2004) explained that the PRE of the vertical drift would re-energize the fountain effect. The postsunset EIA produces a large plasma density gradient from the trough region to ~~th~~ the crest region. Takahashi et al. (2016) observed ~~a most steep in the steepest~~ TEC gradient with a difference of 30-50 TECU from the inside to outside plasma bubbles.

In the evening sectors, the vertical drift enhancement is of particular significance as it is the major drivers for the generation of ESF (Farley et al., 1970; Woodman, 1970; Basu et al., 1996; Fejer et al., 1999; Martinis et al., 2005). Tulasi Ram et al. (2006) reported that the rapid enhancement of post-sunset of the zonal electric field leads to a large vertical plasma drift ( $\mathbf{E} \times \mathbf{B}$ ), thereby lifting the F-layer to higher altitudes resulting in a condition conducive for the generation of ESF. Ionospheric irregularities are mostly observed over equatorial/low-latitude region an hour or two hours after the PRE. Rastogi and Woodman (1978) showed that ESF can appear at any time of the night other than the post-sunset period following the abnormal reversal of the vertical F-region drifts to an upward direction, with a delay of about 1-2 hr. As illustrated in Figure 2, the influence of post-sunset enhancement in the zonal electric field on the maximum enhancement/reduction in the spatial gradient of TEC during the post-sunset period can be seen. This could indicate the maximum enhancement/reduction in the spatial gradient of TEC and the occurrence of ionospheric irregularities have some degree of relationship.

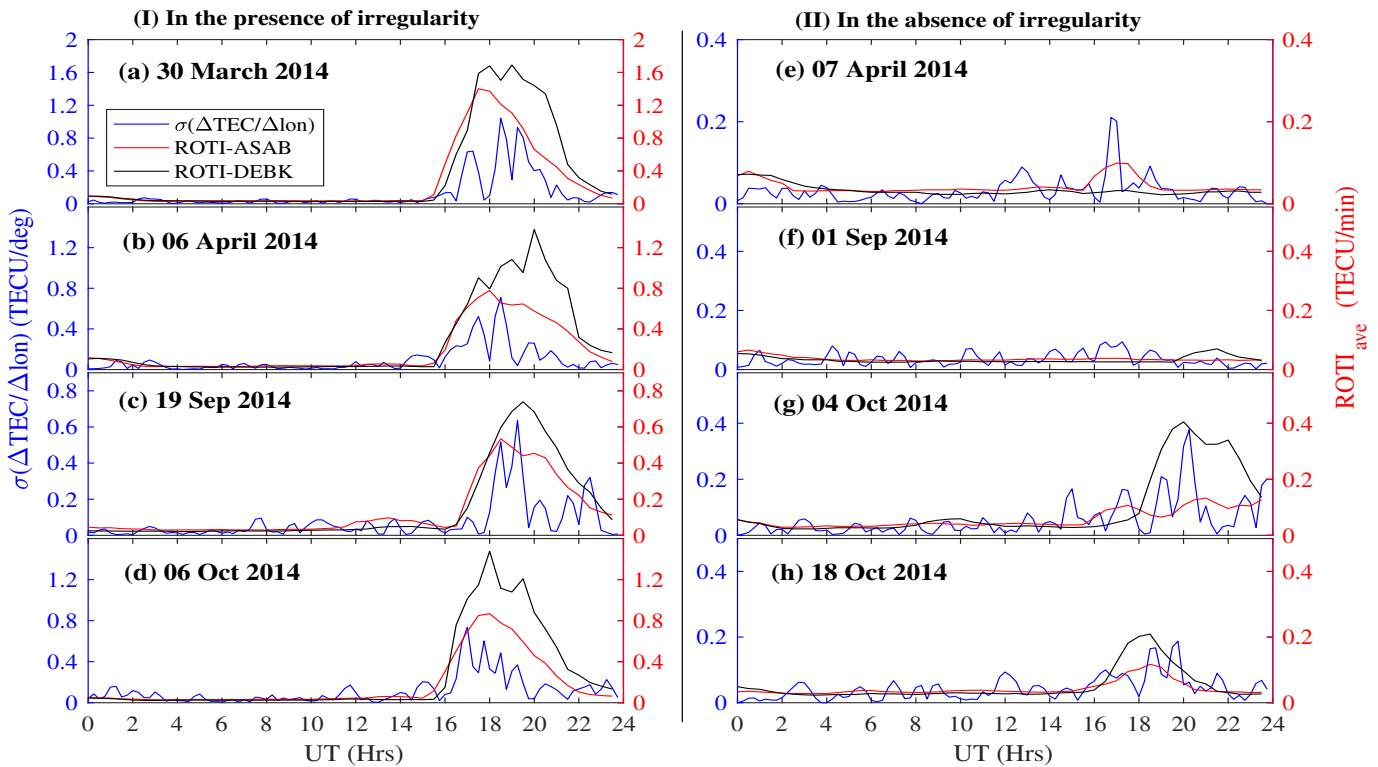
Figures 4 (a-h) indicate representative cases showing the diurnal variation of  $ROTI_{ave}$  over ASAB (red curve) and DEBK (black curve) and  $\sigma(\Delta TEC/\Delta lon)$  (blue curve) ~~when during~~ the occurrence of ionospheric ~~irregularity present irregularities~~



**Figure 3.** Typical examples of diurnal variation in the spatial gradient of TEC (blue curve) and the ROTI over ASAB (red curve) and DEBK (black curves) on a) 30 March 2014, b) 10 April 2014, c) 20 September 2014 and d) 10 October 2014.

(left panel) and ~~absent during their absence~~ (right panel). It is clearly observed from Figs. 4 (a-d) that intensity level of  $ROTI_{ave}$  was greater than 0.4 TECU/min indicating the presence of ionospheric irregularities. Figures. 4 (e-h), on the other hand, indicate examples when the presence of occurrence of ionospheric irregularities are absent, where the value of  $ROTI_{ave}$  was less than 0.4 TECU/min.  $ROTI_{ave} \geq 0.4$  TECU/min ~~indicate indicates~~ the presence of ionospheric irregularities (Oladipo and Schuler, 2013b; Oladipo et al., 2014). As can be seen from Figure 4 (blue curves), the intensity level of  $\sigma(\Delta TEC/\Delta lon)$  observed in the evening period was higher when ~~the occurrence of ionospheric irregularity irregularities were~~ present (Fig. 4, left panels) than when ~~the occurrence of irregularity irregularities were~~ absent (Fig. 4, right panels). It is evident from the figures that the strength of  $\sigma(\Delta TEC/\Delta lon)$  observed on the nighttime period was greater than the daytime value, as  $ROTI_{ave}$  does. The post-sunset plasma bubble irregularities are generated at the bottom side of the F-layer by the sunset enhancement of the zonal electric field called pre-reversal enhancement caused by the ~~the~~ combined action of an eastward thermospheric wind and the longitudinal gradient in ionospheric conductivity that exist along sunset terminator (Rishbeth, 1971; Fejer et al., 1999). It is well documented that plasma bubble development depends on the linear growth rate for generalized R-T instability process, the flux tube integrated Pedersen conductivity that controls the non-linear development, and density perturbations that are needed to act as a seed to trigger the instability growth. The ~~density gradient control the intensity of the PRE through the~~

E-regions electrodynamical coupling process and PRE is generated through interaction of zonal neutral wind in the F-region and conductivity gradient caused by the terminator. The density gradient affects the R-T instability growth rate thus, the generation of equatorial plasma bubbles (Abdu et al., 2009) irregularities (Ossakow, 1981; Mendillo et al., 1992). Background electron density and its distribution in the ionosphere affects the formation of ionospheric irregularities. The intensity level of  $\sigma(\Delta TEC/\Delta lon)$  obtained from two nearby located stations observed near sunset terminator, related with the longitudinal gradient of ionospheric conductivity, could indicate the presence/absence of large-scale ionospheric irregularities. Cesaroni et al. (2015) reported a strong relation-relationship between the standard deviation of the gradient of TEC and the occurrence of ionospheric scintillation.

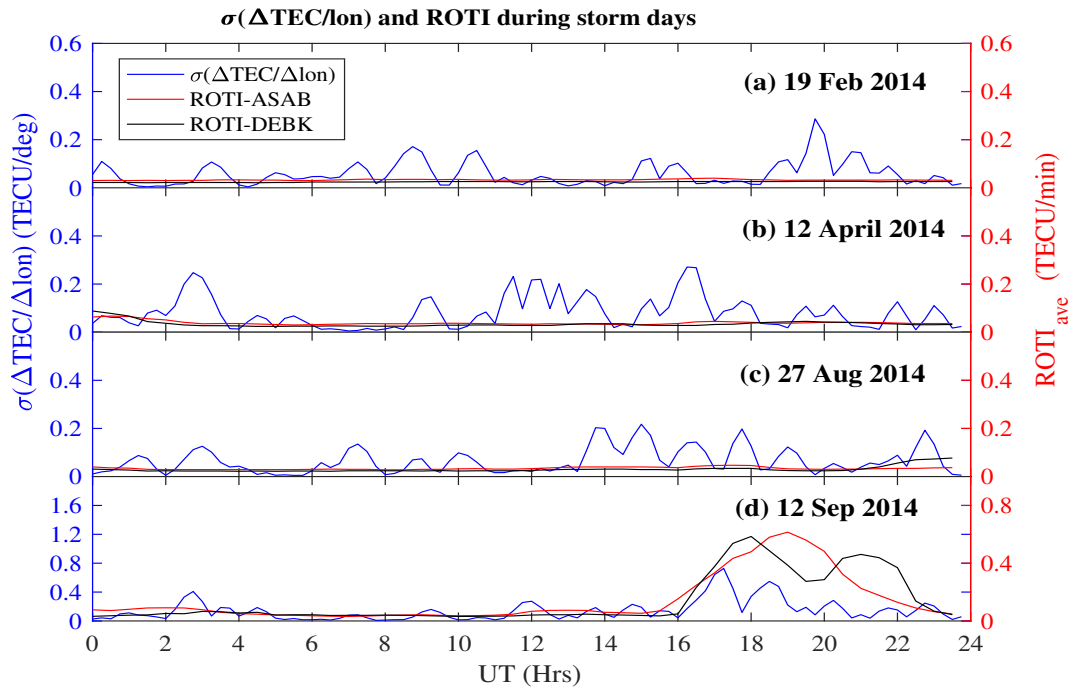


**Figure 4.** Typical examples showing-of the diurnal variation of  $\sigma(\Delta TEC/\Delta lon)$  (blue curve) and  $ROTI_{ave}$  over ASAB (red curve) and DEBK (black curves) (I) in the presence of ionospheric irregularities on (a) 30 March 2014, (b) ~~10-06~~ 06 April 2014, (c) ~~20-19~~ 19 September 2014 and (d) ~~10-06~~ 06 October 2014 (II) in the absence of ionospheric irregularities on (e) 07 April 2014, (f) ~~13-April~~ 01 September 2014, (g) ~~16-04~~ 04 October 2014 and (h) 18 October 2014. Local time (LT) = UT + 3 hr.

Figure 5 (a-d) illustrates examples-showing-typical-examples-of the diurnal variation of  $\sigma(\Delta TEC/\Delta lon)$  and  $ROTI_{ave}$  during some of the selected geomagnetic storm days. These storm days are categorized as moderate magnetic storms ( $-100 \text{ nT} \leq \text{Dst} \leq -50 \text{ nT}$ ) (Loewe and Pröls, 1997; Echer et al., 2013). When the presence of ionospheric irregularity are-observed is-observed-over-both-stations ( $ROTI_{ave} \geq 0.4 \text{ TECU/min}$ ), the magnitude of  $\sigma(\Delta TEC/\Delta lon)$  observed in the post-sunset

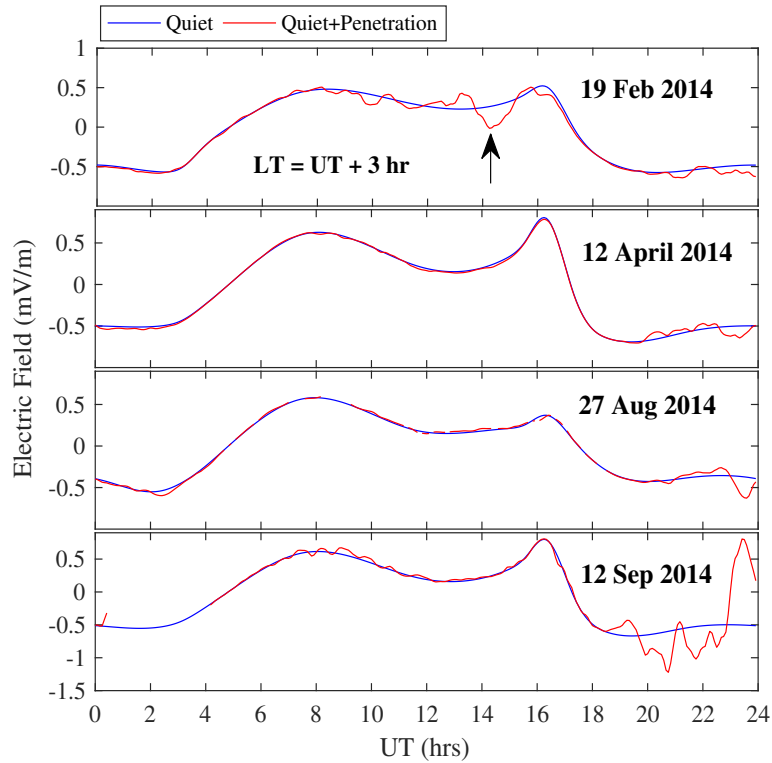
period ~~show~~ shows enhancement (for example, ~~13–12~~ September 2014) ~~and when its occurrence~~. On the other hand, when the occurrence of ionospheric irregularities is suppressed ( $ROTI_{ave} < 0.4$  TECU/min), the magnitude of  $\sigma(\Delta TEC/\Delta lon)$  ~~reduced~~ shows reduction (for example, 19 February 2014 and 27 August 2014). On these days, the spatial gradient in TEC ( $\Delta TEC/\Delta lon$ ) observed during the daytime hours show maximum enhancement/reduction. ~~The influence of geomagnetic storm on the occurrence irregularities have been studied (e.g., Aarons, 1991; Oladipo and Schuler, 2013a; Kassa and Damtie, 2017)~~ During storm days, when the presence of ionospheric irregularities is observed and suppressed, the spatial gradient of TEC  $\sigma(\Delta TEC/\Delta lon) > 0.7$  TECU/deg and  $\sigma(\Delta TEC/\Delta lon) < 0.4$  TECU/deg were observed, respectively. The enhancement/reduction in the spatial gradient of TEC in the daytime period during geomagnetic storm day appears to show inhibition of ionospheric irregularities. On the other hand, the magnitude of  $\sigma(\Delta TEC/\Delta lon)$  observed during nighttime period could indicate the presence/absence of ionospheric irregularity. In the presence of ionospheric irregularities, the enhancement/reduction in the spatial gradient of TEC observed during post-sunset period during geomagnetic quiet/disturbed conditions was higher than when ionospheric irregularities are suppressed. The triggering/~~inhibition effect of storm on the generation of ionospheric irregularities~~ suppression in the occurrence of ionospheric irregularities during geomagnetic storms was related to the enhancement/reduction in the gradient of TEC,  $\sigma(\Delta TEC/\Delta lon)$  (see Figs. 5). As can be seen from Figs. 5, the geomagnetic storm appears to show a similar effect on the spatial gradient of TEC as it has on ionospheric irregularities. The intensity level of both  $ROTI$  and  $\sigma(\Delta TEC/\Delta lon)$  observed during post-sunset hours was affected by geomagnetic storms. The magnitude of the spatial gradient of TEC show enhancement/reduction during 12 September 2014 and 19 February 2014 storm days, respectively. In the same way, the intensity level of  $ROTI$  (a proxy of ionospheric irregularities) during the storm was above/below the threshold value, respectively. This effect could be related to the magnitude and ~~direction of polarity~~ of the z-component of interplanetary magnetic field (~~Biktash, 2004~~). ~~The enhancement/reduction in (IMF Bz)~~ (Biktash, 2004) or local time at which the maximum negative excursion of Dst occurs (e.g., Aarons and DasGupta, 1984; Aarons, 1991). When the z-component of interplanetary magnetic field (IMF Bz) turns towards northward (for example, during 19 Feb 2014) in the post-sunset period, reduction in the spatial gradient of TEC ~~in the daytime period during geomagnetic storm day appears to show inhibition~~ indicated by  $\sigma(\Delta TEC/\Delta lon)$  is observed. In a similar way, the intensity level of  $ROTI_{ave}$  observed during the storm period ~~is~~  $ROTI_{ave} < 0.4$  TECU/min.

Geomagnetic storm was reported to either trigger or inhibit the occurrence of ionospheric irregularities ~~. On the other hand, the enhancement~~ (Aarons, 1991; Martinis et al., 2005; Oladipo and Schuler, 2013a; Kassa and Damtie, 2017). Different suggestions have been reported on how the geomagnetic storm affect the PRE electric field and hence the generation of ionospheric irregularities (e.g., Aarons, 1991; Biktash, 2004). During geomagnetic storms, the prompt penetration electric field (PPEF) and the disturbance dynamo electric field (DDEF) are the two major electric field sources which change the ~~magnitude/reduction in the~~ polarity of the background electric field. The PPEF direction is eastward/westward during daytime/nighttime, whereas the DDEF has opposite polarity with PRE electric field and PPEF. They affect the occurrence of ionospheric irregularities by modulating the background electric field. In the absence of observations over the region of interest, the Prompt Penetration Equatorial Electric Field Model (PPEFM) (Manoj and Maus, 2012) can be utilized to observe the effect of PPEFs. To indicate the mechanism that affects the occurrence of ionospheric irregularities, we presented the temporal variation of equatorial



**Figure 5.** Representative examples of diurnal variation of  $\sigma(\Delta TEC/\Delta lon)$  (blue curves) and  $ROTI_{ave}$  over ASAB (red curves) and DEBK (black curves) during geomagnetic storm days (a) 19 February 2014 (b) 12 April 2014 (c) 27 August 2014 and (d) 12 September 2014. Local time (LT) = UT +3 hr.

electric field over  $37^\circ\text{E}$  during geomagnetic storm conditions for (a) 19 February 2014 (b) 12 April 2014 (c) 27 August 2014 and (d) 12 September 2014 (see Fig. 6). The blue curve represents the background quiet-time electric field. The red curve represents the total electric field (PPEF superimposed on the background quiet-time electric field). On 19 February 2014 (Fig. 6 (top panel)), it can be clearly noted that the total electric field observed near sunset ( $\sim 18:00$  LT, indicated by black arrow) is below the background electric field. It must be mentioned here, that the reduced PRE may have contributions from westward disturbance dynamo (DDEF) electric field. On this storm day, in addition, the  $B_z$  component of interplanetary magnetic field during dusktime turns northward related to over-shielding electric field which suppresses the background electric field. As a result, the post-sunset ionosphere drifts downward leading to the suppression in the ionospheric irregularities (represented by ROTI) and reduction in the spatial gradient of TEC (represented by  $\sigma(\Delta TEC/\Delta lon)$  observed during nighttime period indicate the presence). The triggering/absence of ionospheric irregularity inhibition effect of the storm on the generation of ionospheric irregularities could be also related to the magnitude and direction of z-component of interplanetary magnetic field (Biktash, 2004). It is evident from Figures 4 and 5 that the spatial gradient of TEC,  $\sigma(\Delta TEC/\Delta lon)$ , obtained from two closely located stations could show the presence and absence of ionospheric irregularities.



**Figure 6.** Representative examples showing diurnal variation of  $\sigma(\Delta TEC/\Delta lon)$  (blue curves) and  $ROTI_{ave}$  over ASAB (red curves) and DEBK (black curves). Prompt penetration electric field observed during geomagnetic storm days of (a) 19 February 2014 (b) 12 April 2014 (c) 27 August 2014 and (d) 13-12 September 2014. The arrow indicates time of PRE. Local time (LT) = UT +3 hr.

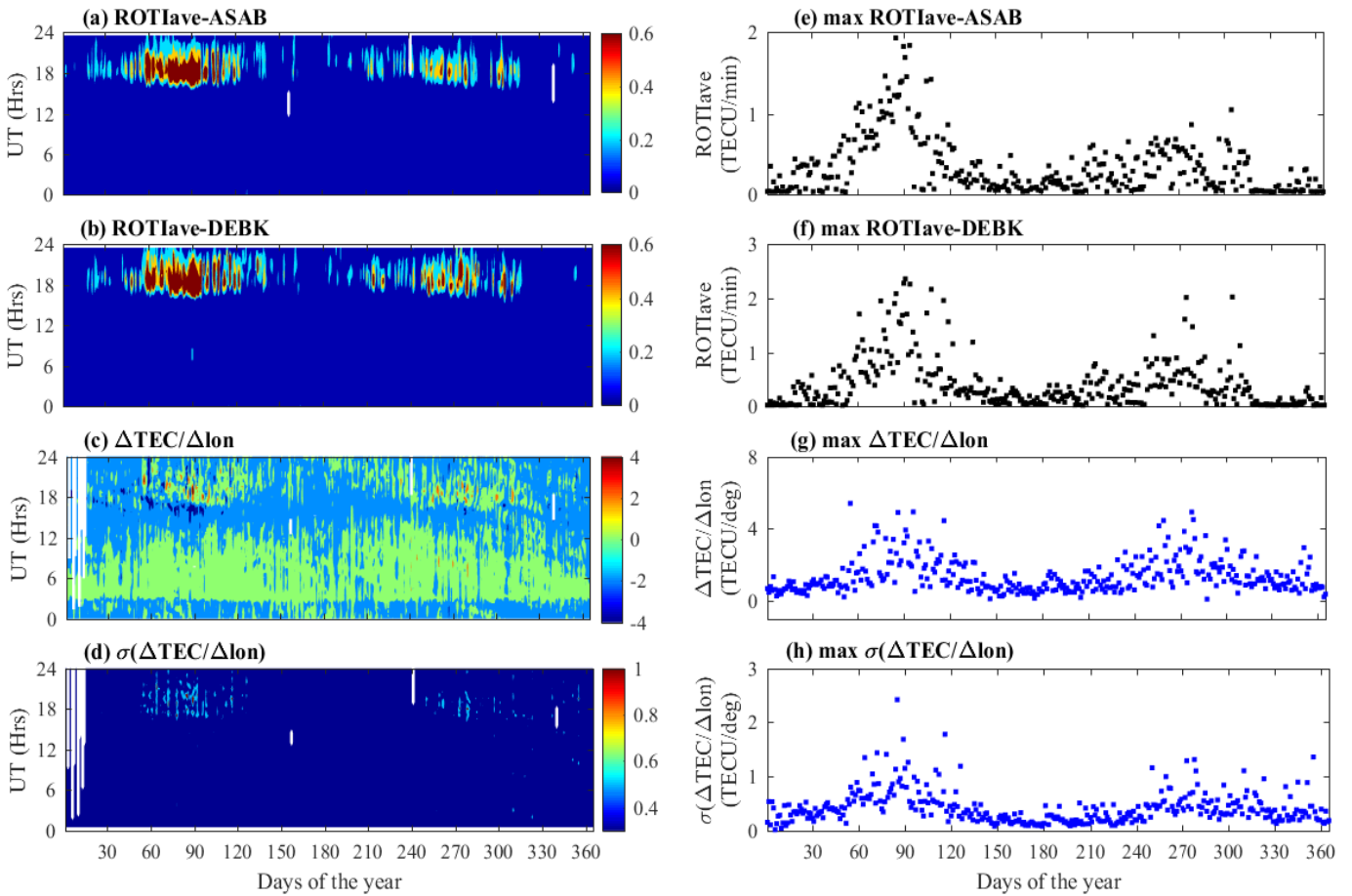
Figures 7 (a-d) respectively, show the annual variation of  $ROTI_{ave}$  (over ASAB and DEBK), spatial gradient of TEC ( $\Delta TEC/\Delta lon$ ) and its standard deviation  $\sigma(\Delta TEC/\Delta lon)$  in the year 2014. The intensity level of  $ROTI_{ave}$ ,  $\Delta TEC/\Delta lon$ , and  $\sigma(\Delta TEC/\Delta lon)$  are indicated in the color bar. As stated by Oladipo and Schuler (2013b), the value of  $ROTI_{ave} \geq 0.4$  TECU/min shows the presence of ionospheric irregularity. The occurrence of ionospheric irregularities at the two stations, as indicated by intensity level of  $ROTI_{ave}$ , was predominantly observed in the pre-midnight periods, mainly between 19:00 LT and 24:00 LT. The large-scale ionospheric irregularities, which are responsible for the scintillation of trans-ionospheric signals at GNSS frequencies, are more pronounced during post-sunset hours. The observed phase fluctuation shows monthly variations and there is also a seasonal trend in the occurrence of ionospheric irregularity. Strong and weak ionospheric irregularities are observed in March equinox and in June/July solstices, respectively.

It can be seen from Figure 7c that positive/negative values in the gradient of TEC were observed. Gradient in TEC is positive when TEC/electron density over ASAB is higher, and is negative when TEC/electron density over DEBK is higher. Maximum enhancement/reduction in the gradient of TEC was observed mostly during the post-sunset (18:00 - 24:00 LT) and post-midnight (24:00 - 06:00 LT) period. Equation (1) was applied to all days (364 days) of the year 2014 in computing the



spatial gradient of TEC. Out of the total observed daily maximum value of the gradient of TEC, about 194 days (in percent about 53%) of them fall in this time period. There ~~was also a case~~ were also cases where the maximum enhancement/reduction in the ~~value values~~ value values of the gradient of TEC ~~were was~~ were observed in the early morning period. In Figure 7d the diurnal, monthly and seasonal variation in the standard deviation of spatial gradient of TEC,  $\sigma(\Delta TEC/\Delta lon)$ , was clearly observed and its variation

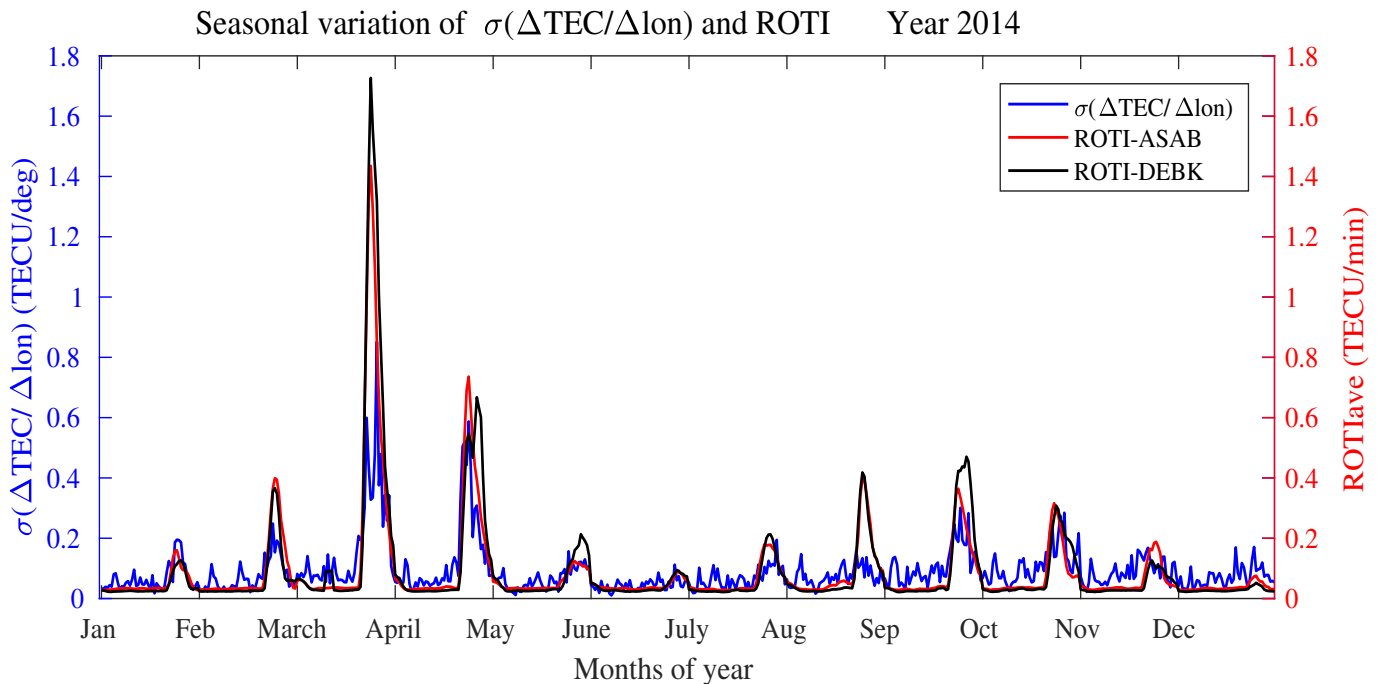
5 show similarity with variation of  $ROTI_{ave}$ . Maximum enhancement in  $\sigma(\Delta TEC/\Delta lon)$  was observed in the evening time period, 19:00 - 24:00 LT. The seasonal variation in  $\sigma(\Delta TEC/\Delta lon)$  also appears frequently in equinoctial months, but rarely in solstice months. Such kind of occurrence variation could be related to the magnitude of  $E \times B$  drift. Cesaroni et al. (2015) also found a seasonal variation of the TEC spatial gradients and they reported that it is larger during the equinoctial seasons than in the solstice seasons.



**Figure 7.** Annual and daily maximum value variation of (a,b)  $ROTI_{ave}$  over Asab (ASAB), (c,d)  $ROTI_{ave}$  over Debarik (DEBK), (e,f) spatial gradient of TEC ( $\Delta TEC/\Delta lon$ ), (g,h) standard deviation of gradient of TEC  $\sigma(\Delta TEC/\Delta lon)$  in year 2014. The  $ROTI_{ave}$  in TECU/min and  $\Delta TEC/\Delta lon$  in TECU/deg is indicated in color bar. Local time (LT) = UT + 3 hr.

Figures 7 (e-h) respectively, show the daily maximum values of  $ROTI_{ave}$  (over ASAB and DEBK), spatial gradient of TEC ( $\Delta TEC/\Delta lon$ ) and standard deviation of spatial gradient of TEC  $\sigma(\Delta TEC/\Delta lon)$ , respectively, in the year 2014. As can be observed from Figures 7 (e-h)(right panel), the daily maximum value of  $ROTI_{ave}$ ,  $\Delta TEC/\Delta lon$  and  $\sigma(\Delta TEC/\Delta lon)$  shows monthly and seasonal variations, and an equinoctial asymmetry is also observed. The daily maximum value of  $\Delta TEC/\Delta lon$  and  $\sigma(\Delta TEC/\Delta lon)$  shows similar trends with the daily maximum value of  $ROTI_{ave}$  observed over ASAB and DEBK stations. The trend they show has similarity with the time of occurrence of maximum enhancement/reduction, monthly and seasonal variations. Moreover, the seasonal variation observed in both variables exhibits equinoctial asymmetry, where the March equinox was greater than September equinoxes. The mechanism of generation of the enhancement in vertical drift just after sunset was detailed by Farley et al. (2008). The magnitude of peak vertical drift is known to control the seasonal and day-to-day variations in the occurrence of equatorial spread F (Manju et al., 2009; Tulasi Ram et al., 2006).

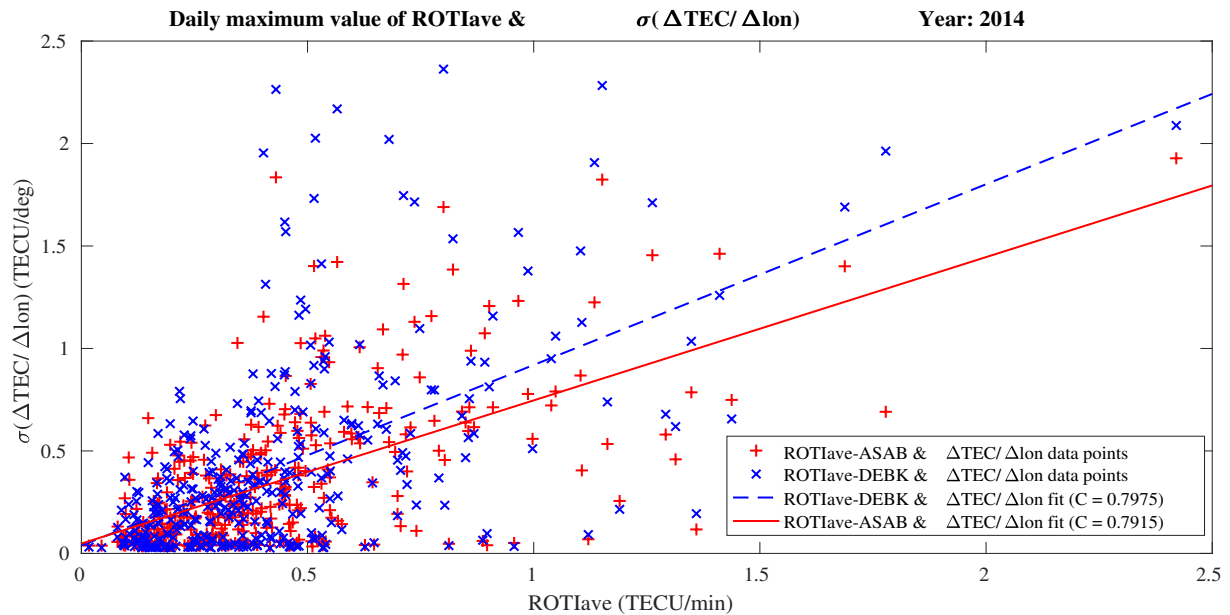
Figure 8 depicts the quiet-monthly mean of  $ROTI_{ave}$  (over ASAB and DEBK) (red and black curves) and  $\sigma(\Delta TEC/\Delta lon)$  (blue curve) in the year 2014. The enhancement/reduction in the intensity of  $\sigma(\Delta TEC/\Delta lon)$  show similar trends with  $ROTI_{ave}$ , and was stronger/weaker during equinoctial/solstice months. Equinoctial asymmetry both in  $ROTI_{ave}$  and  $\sigma(\Delta TEC/\Delta lon)$  was also evident from Fig. 8, where March equinoxes ~~was~~ were stronger than September equinoxes. As expected, the TEC spatial gradients are also found to be larger during the equinoctial seasons than in the solstice seasons.



**Figure 8.** Seasonal variation of  $ROTI_{ave}$  over ASAB (red curve),  $ROTI_{ave}$  over DEBK (black curve), and  $\sigma(\Delta TEC/\Delta lon)$  (blue curve) in the year 2014

Figure 9 shows the relationship between the standard deviation of the spatial gradient of TEC  $\sigma(\Delta TEC/\Delta lon)$  and  $ROTI_{ave}$  (over ASAB and DEBK) in the year 2014. The daily maximum values of  $\sigma(\Delta TEC/\Delta lon)$  and  $ROTI_{ave}$  were considered to examine ~~their~~ the correlation. The correlation coefficient between  $\sigma(\Delta TEC/\Delta lon)$  and  $ROTI_{ave}$  is about 0.7915 (in ASAB) and 0.7975 (in DEBK), respectively. Studies indicate that the gradient of TEC can be computed from a pair of closely-spaced receiver stations ( $< 2^\circ$ ) such that the two receivers share the same GPS satellite. In our case, however, the two stations are separated by  $5^\circ$ . The moderate correlation obtained might be attributed to the wider longitudinal separation ( $5^\circ$ ) between the two stations. The other factor for the moderate correlation between the gradient of TEC and the occurrence of ionospheric irregularities might be the way ROTI was computed (since ROTI contains both the spatial and temporal variation in TEC). It is well known that ROT is the combination of the spatial and temporal gradients. However, by giving less attention to the spatial gradient effect, previous authors often ~~use~~ used  $\Delta TEC/\Delta t$  to examine the fluctuation in TEC. It is not only the temporal variation of TEC that contribute to the fluctuation in the phase and amplitude of the signals but also the spatial gradient of TEC. The computed correlation coefficient between the TEC gradient and ROTI, here, gives an indication of the contribution of the spatial gradient of TEC to ROTI (or ROT) usage. This can give the case where the spatial gradient of TEC between two nearby located stations can be used as an indicator of occurrence of ionospheric irregularities. Every night time enhancement/reduction in the gradient of TEC may not be a guarantee to indicate the occurrence/non-occurrence of ionospheric irregularities. However, there are cases which show the occurrence of irregularities over both stations (ASAB and DEBK) when the night time enhancement/reduction in the TEC gradient were observed. Hua and Chunbo (2009) discussed the relation between ROTI index, ionospheric TEC gradient, and vertical TEC. Cesaroni et al. (2015) also described the importance of the information provided by the TEC gradients variability and the role of the meridional TEC gradients in driving scintillation. By comparing the zonal and the meridional components of average and standard deviation of  $\Delta TEC$ , Cesaroni et al. (2015) reported that the North-South (N-S) gradients of TEC are significantly larger than their East-West (E-W) counterparts, regardless of the season. ~~Saito and Yoshihara (2017) associated extreme ionospheric total electron gradient with plasma bubbles for~~ For GNSS Ground-Based Augmentation System ~~and they obtained a largest ionospheric gradient of,~~ Saito and Yoshihara (2017) observed extreme spatial gradient in ionospheric total electron (about 3.38 TECU/km) associated with plasma bubbles. It is suggested that when scintillation events are investigated ionospheric TEC gradient is also one of the considerable parameters.

Figure 10 presents the percentage occurrence of ionospheric irregularities over ASAB (blue) and DEBK (red) in the year 2014. The observation of the percentage occurrence was made for all days of the year 2014 including both quiet and disturbed days. The percentage occurrence of irregularities was calculated by counting the number of days in a month with  $ROTI_{ave} \geq 0.4$  TECU/min and dividing by the number of days in a month for which the data are available, and multiplied by 100 % (Oladipo et al., 2014). Since the two stations are close to each other, the occurrence of ionospheric irregularities observed over both stations does not show major differences. Two peaks of irregularity occurrence were observed around the middle of the equinoxes (i.e., in March and September) at both stations. This could be related to the alignment of the magnetic field lines with a geographic meridian (Burke et al., 2004; Tsunoda, 2005, 2010). The seasonal variation of ionospheric irregularities exhibits an equinoctial asymmetry in its occurrence especially at the two peaks (i.e., in March and September), where March

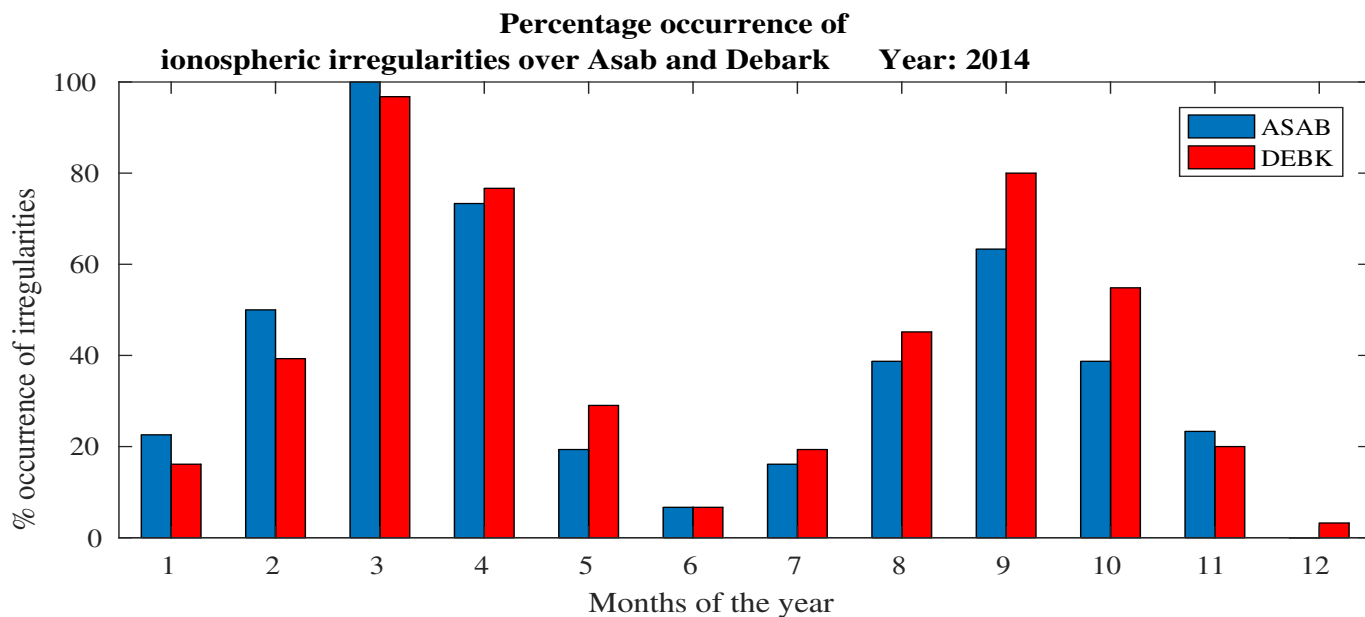


**Figure 9.** Relation between the daily maximum value of  $\sigma(\Delta TEC/\Delta lon)$  and the daily maximum value of  $ROTI_{ave}$  over ASAB (red, +) and DEBK (blue, x) in the year 2014. The blue broken and solid red lines indicate the linear fit between the daily maximum value of  $\sigma(\Delta TEC/\Delta lon)$  and  $ROTI_{ave}$  for ASAB and DEBK, respectively.

equinox was greater than September equinox. The maximum  $ROTI_{ave}$  observed over this station in the year 2014 was about 1.8 TECU/min in March 2014 and [the](#) minimum level of  $ROTI_{ave}$  was observed on December Solstice.

Based on a few station observations, earlier studies indicated the equinoctial asymmetry in the occurrence of L-band scintillations [and they which was](#) attributed to differences in the meridional winds during two equinoxes (e.g., Nishioka et al., 2008; Maruyama et al., 2006; Otsuka et al., 2006). Nishioka et al. (2008) [have](#) analyzed the occurrence characteristics of plasma bubbles using GPS-TEC obtained all over the globe and found equinoctial asymmetry in [its their](#) occurrence. They [have](#) suggested that equinoctial asymmetry could be due to the asymmetric distribution of integrated conductivities during [these analyzed](#) periods. Using three ionosonde observations, Maruyama et al. (2006) reported that meridional wind is the key factor for the equinoctial asymmetry. Using multi-instrument observations, Sripathi et al. (2011) examined the equinoctial asymmetry in scintillation occurrence in the Indian sector and they suggested [that](#) the asymmetry in the electron density distribution and meridional winds as a possible causative [mechanism mechanisms](#). Manju et al. (2012) also reported equinoctial asymmetry in ESF occurrence and they discussed the possible role of asymmetric meridional winds. Manju and Haridas (2015) observed a significant asymmetry in the threshold height between the vernal equinox and autumn equinox and underlines the distinct differences in the role of neural dynamics in ESF triggering during the two equinoxes. Based on scintillation index ( $S_4$ ) and GPS-TEC derived indices, the seasonal and equinoctial asymmetry in the occurrence of ionospheric irregularities over equatorial/low-latitude region of African [were was](#) presented (Susnik and Forte, 2011; Paznukhov et al., 2012; Oladipo

and Schuler, 2013b; Oladipo et al., 2014; Seba and Tsegaye, 2015; Mungufeni et al., 2016). By employing the horizontal wind model (HWM14), Seba et al. (2018) recently reported that the difference in the wind pattern between March and September is one of the factors for the equinoctial asymmetry. The local time and seasonal trends of occurrence of ionospheric irregularities observed in this study are similar to those reported in the previous studies (Aarons, 1993; Basu et al., 1988; Olwendo et al., 2013; Amabayo et al., 2014; Seba and Tsegaye, 2015). The equinoctial asymmetries in the occurrence of ionospheric irregularities observed in our case might also be due to the direction of the meridional winds during equinoxes over the stations.



**Figure 10.** Percentage of occurrence of ionospheric irregularities over ASAB (red) and DEBK (blue) stations in the year 2014 based on  $ROTI_{ave}$  index.

In terms of diurnal, monthly, and seasonal behavior the enhancement/reduction in the spatial gradient of TEC and the occurrence of ionospheric irregularities appears to show similar trends. And, it is evident from the above result that the spatial gradient of TEC between two nearby located stations where the two receivers lie nearly along the same latitudes ~~convey-convey~~ insight into the relation between large-scale ionospheric irregularity occurrence ~~-The and spatial gradient in TEC. Relationship between the~~ spatial gradient of ~~electron-density (TEC) near solar-terminator obtained from two nearby-TEC from the two~~ ~~close-by~~ located GNSS receivers ~~method may be an alternative method to estimate the strength of and~~ the zonal electric field ~~derived from EEF model in the year 2014 is also observed.~~ In the current study, the optimum distance between the two GNSS receivers and the threshold value of the gradient of TEC that could indicate the occurrence of ionospheric irregularities has not been considered. This will be considered in our future work.

## 4 Conclusions

In this study, we ~~present~~presented for the first time the relationship between the spatial gradient of TEC between two nearby located stations (ASAB and DEBK) and the occurrence of ionospheric irregularities over Ethiopia, an equatorial region, using ground based GPS-TEC observations. The following observations are ~~the summery~~a summary of our analysis. The daytime equatorial electrojet (EEJ) derived from H-component of geomagnetic field and the real-time electric field (EEF) model (Manoj and Maus, 2012) correlates linearly and positively with correlation coefficient of  $C = 0.6$  ~~in the year 2014~~. Most of the peak enhancement/reduction value of  $\Delta TEC/\Delta lon$  and  $\sigma(\Delta TEC/\Delta lon)$  ~~was~~were observed about 1-2 hrs later from post-sunset enhancement of equatorial electric field (EEF), which indicates that EEF and the spatial gradient of TEC ~~has~~have a strong relationship. In terms of ~~seasons and months~~month and season, the nighttime pattern of the spatial gradient of TEC ( $\Delta TEC/\Delta lon$ ) and its standard deviation  $\sigma(\Delta TEC/\Delta lon)$  show a similar trend with  $ROTI_{ave}$ . The relation between the standard deviation of the spatial gradient of TEC,  $\sigma(\Delta TEC/\Delta lon)$ , and ionospheric irregularity occurrence indicated by  $ROTI_{ave}$  ~~are~~were also presented. The correlation coefficient between  $\sigma(\Delta TEC/\Delta lon)$  and  $ROTI_{ave}$  was about 0.7975 (in ASAB station) and 0.7915 (in DEBK station). Both  $\sigma(\Delta TEC/\Delta lon)$  and  $ROTI_{ave}$  show maximum enhancement/reduction during equinoctial/solstice months. Equinoctial asymmetry was also observed in both  $\sigma(\Delta TEC/\Delta lon)$  and  $ROTI_{ave}$ , where March equinox was greater than September equinox. The intensity level of  $\sigma(\Delta TEC/\Delta lon)$  was stronger/weaker when the occurrence of ionospheric irregularity is present/absent. When the occurrence of ionospheric irregularities ~~are~~was suppressed (for example, during geomagnetic disturbed conditions), the nighttime peak value of  $\sigma(\Delta TEC/\Delta lon)$  was smaller. Based on the above results, the strength of spatial gradient of TEC between the two nearby located stations lying along the same geomagnetic latitudes could indicate the presence of large-scale ionospheric irregularities. ~~The~~During post-sunset period on equinoctial months (March and April, 2014), the relation between the spatial gradient of TEC/electron density ~~near-solar terminator obtained from two nearby located GNSS receivers method may be an alternative method to estimate the strength of~~and the zonal electric field was observed. The threshold value of the gradient of TEC and its standard deviation  $\sigma(\Delta TEC/\Delta lon)$  and the minimum longitudinal separation between two stations that could ~~led~~lead us to predict the occurrence of ionospheric irregularities are not addressed in the current study and this will be considered in the future investigation.

## 25 Acknowledgments

We thank Ethiopian Space Science and Technology Institute (ESSTI) for facilitating conditions to do this research. We also acknowledge the administration and staff the Space Science Directorate of the South African National Space Agency (SANSA) for the support during the research visit of the first author to the institution. The authors would like to express their gratitude to the International GNSS Service (IGS) for providing the GPS data (<ftp://cddis.gsfc.nasa.gov>). We thank the Cooperative Institute for Research in Environmental Sciences (CIRES) team for real-time PPEEFM model at <http://geomag.org/model/PPEEFM/RealtimeEF.html>. We are also grateful to the online AMBER (<http://magnetometers.bc.edu/index.php/>) and INTERMAGNET (<http://www.intermagnet.org/>) for freely providing magnetometer data. Melessew Nigussie work has been supported by Air

Force Office of Scientific Research, Air Force Material Command USAF under Award No.FA9550-16-1-0070. T. Dugassa, thanks Bule Hora University for permitting study leave.

### **Data availability**

The data used in this study were obtained from <ftp://cdis.gsfc.nasa.gov>, <http://geomag.org/models/PPEFM/RealtimeEF.html>,  
5 <http://magnetometers.bc.edu/index.php/>, <http://www.intermagnet.org/>, and [http://isgi.unistra.fr/data\\_download.php](http://isgi.unistra.fr/data_download.php).

### **Competing interests**

The authors declare that they have no conflict of interest.

## References

- Aarons, J.: The role of the ring current in the generation or inhibition of equatorial F layer irregularities during magnetic storms, *Radio Science*, 26, 1131–1149, 1991.
- Aarons, J.: The longitudinal morphology of equatorial F layer irregularities relevant to their occurrence., *Space Sci. Rev.*, 63, 209., 1993.
- 5 Aarons, J. and DasGupta, A.: Equatorial scintillations during the major magnetic storm of April 1981, *Radio Sci.*, 19, 731-739, 1984.
- Aarons, J., Mendillo, M., and Yantosca, R. G.: GPS phase fluctuations in the equatorial region during sunspot minimum., *Radio Sci.*, 32, 1535-1550., 1997.
- Abdu, M. A., Batista, I. S., Reinisch, B. W., de Souza, J. R., Sobral, J. H. A., Pedersen, T. R., Medeiros, A. F., Schuch, N. J., and de Paula, E. R., a. G. K. M.: Conjugate Point Equatorial Experiment (COPEX) campaign in Brazil: Electrodynamics highlights on spread development conditions and day to day variability, *J. Geophys. Res.*, 114, A04308, <https://doi.org/10.1029/2008JA013749>, 2009.
- 10 Ajith, K., Tulasi Ram, S., Yamamoto, M., Otsuka, Y., and Niranjana, K.: On the fresh development of equatorial plasma bubbles around the midnight hours of June solstice, *Journal of Geophysical Research: Space Physics*, 121, 9051–9062, 2016.
- Alken, P., Chulliat, A., and Maus, S.: Longitudinal and seasonal structure of the ionospheric equatorial electric field, *Journal of Geophysical Research: Space Physics*, 118, 1298–1305, 2013.
- 15 Amabayo, E., Jurua, E., Cilliers, P., and Habarulema, J.: Climatology of ionospheric scintillations and TEC trend over the Ugandan region. , *Adv. Space Res.*, 53,734-743., 2014.
- Anderson, D., Anghel, A., Yumoto, K., Ishitsuka, M., and Kudeki, E.: Estimating daytime vertical  $E \times B$  drift velocities in the equatorial F-region using ground-based magnetometer observations, *Geophys. Res. Lett.*, 29(12), 1596, <https://doi.org/10.1029/2001GL014562>, 2002.
- Anderson, D., Anghel, A., Chau, J., and Veliz, O.: Daytime vertical  $E \times B$  drift velocities inferred from ground-based magnetometer observations at low latitudes, *Space Weather*, 2, 2004.
- 20 Anderson, D., Anghel, A., Chau, J. L., and Yumoto, K.: Global, low-latitude, vertical  $E \times B$  drift velocities inferred from daytime magnetometer observations, *Space Weather*, 4, 2006.
- Arikan, F., Nayir, H., Sezen, U., and Arikan, O.: Estimation of single station interfrequency receiver bias using GPS-TEC, *Radio Science*, 43, 2008.
- 25 Basu, S. and Basu, S.: Equatorial scintillations-A review, *Journal of Atmospheric and Terrestrial Physics*, 43, 473–489, 1981.
- Basu, S., MacKenzie, E., and Basu, S.: Ionospheric constraints on VHF/UHF communications links during solar maximum and minimum periods, *Radio Science*, 23, 363–378, 1988.
- Basu, S., Kudeki, E., Basu, S., Valladares, C., Weber, E., Zengingonul, H., Bhattacharyya, S., Sheehan, R., Meriwether, J., Biondi, M., Kuenzler, H., and Espinoza, J.: Scintillations, plasma drifts, and neutral winds in the equatorial ionosphere after sunset, *J. Geophys Res*, 30 101, 26795-26809, 1996.
- Batista, I., Abdu, M., and Bittencourt, J.: Equatorial F region vertical plasma drifts: Seasonal and longitudinal asymmetries in the American sector, *Journal of Geophysical Research: Space Physics*, 91, 12 055–12 064, 1986.
- Bhattacharyya, A., Beach, T., Basu, S., and Kintner, P.: Nighttime equatorial ionosphere: GPS scintillations and differential carrier phase fluctuations, *Radio Science*, 35, 209–224, 2000.
- 35 Biktash, L.: Role of the magnetospheric and ionospheric currents in the generation of the equatorial scintillations during geomagnetic storms, in: *Annales Geophysicae*, vol. 22, pp. 3195–3202, Copernicus GmbH, 2004.



- Bolaji, O., Adebisi, S., and Fashae, J.: Characterization of ionospheric irregularities at different longitudes during quiet and disturbed geomagnetic conditions, *Journal of Atmospheric and Solar-Terrestrial Physics*, 182, 93–100, 2019.
- Burke, W. J., Gentile, L. C., Huang, C. Y., Valladares, C. E., and Su, S. Y.: Longitudinal variability of equatorial plasma bubbles observed by DMSP and ROCSAT-1, *J. Geophys. Res.*, 19, <https://doi.org/10.1029/2004JA010583>, 2004.
- 5 Cesaroni, C., Spogli, L., Alfonsi, L., De Franceschi, G., Ciraolo, L., Monico, J. F. G., Scotto, C., Romano, V., Aquino, M., and Bougard, B.: L-band scintillations and calibrated total electron content gradients over Brazil during the last solar maximum, *Journal of Space Weather and Space Climate*, 5, A36, 2015.
- Chu, F., Liu, J. Y., a. T. H., Sobral, J., Taylor, M., and Medeiros, A. F.: The climatology of ionospheric plasma bubbles and irregularities over Brazil, *Annales Geophysical*, 23: 379-384, 2005.
- 10 Crain, D., Heelis, R., and Bailey, G.: Effects of electrical coupling on equatorial ionospheric plasma motions: When is the F region a dominant driver in the low-latitude dynamo?, *Journal of Geophysical Research: Space Physics*, 98, 6033–6037, 1993.
- Dabas, R., Singh, L., Lakshmi, D., Subramanyam, P., Chopra, P., and Garg, S.: Evolution and dynamics of equatorial plasma bubbles: Relationships to ExB drift, postsunset total electron content enhancements, and equatorial electrojet strength, *Radio Science*, 38, 2003.
- Dubazane, M. B. and Habarulema, J. B.: An empirical model of vertical plasma drift over the African sector, *Space Weather*, 16, 619–635, 15 2018.
- Dugassa, T., Habarulema, J. B., and Nigussie, M.: Longitudinal variability of occurrence of ionospheric irregularities over the American, African and Indian regions during geomagnetic storms, *Advances in Space Research*, 2019.
- Eccles, J. V.: Modeling investigation of the evening prereversal enhancement of the zonal electric field in the equatorial ionosphere, *Journal of Geophysical Research: Space Physics*, 103, 26 709–26 719, 1998.
- 20 Echer, E., Tsurutani, B., and Gonzalez, W.: Interplanetary origins of moderate ( $-100 \text{ nT} < \text{Dst} < -50 \text{ nT}$ ) geomagnetic storms during solar cycle 23 (1996–2008), *Journal of Geophysical Research: Space Physics*, 118, 385–392, 2013.
- Farley, D., Balsey, B., Woodman, R., and McClure, J.: Equatorial spread F: Implications of VHF radar observations, *Journal of Geophysical Research*, 75, 7199–7216, 1970.
- Farley, D. T., Bonelli, E., Fejer, B. G., and Larsen, M. F.: The prereversal enhancement of the zonal electric field in the equatorial ionosphere., 25 *J. Geophys. Res.*, 113,A05304., 2008.
- Fejer, B.: Low latitude electrodynamic plasma drifts: a review., *J. Atmos. Terr. Phys.*, 53, 677-693, 1991.
- Fejer, B., Jensen, J., and Su, S.: Quiet time equatorial F region vertical plasma drift model derived from ROCSAT-1 observations., *J. Geophys. Res.*, <https://doi.org/http://dx.doi.org/10.1029/2007JA012801>., 2008.
- Fejer, B. G., Scherliess, L., and de Paula, E. R.: Effects of the vertical plasma drift velocity on the generation and evolution of equatorial 30 spread F, *J. Geophys. Res.*, 104, 19,859-19,869, <https://doi.org/10.1029/1999JA900271>, 1999.
- Foster, J.: Quantitative investigation of ionospheric density gradients at mid latitudes, in: *Proceedings of the Institute of Navigation ION 2000 Conference*, 2000.
- Hajra, R., Chakraborty, S., Mazumdar, S., and Alex, S.: Evolution of equatorial irregularities under varying electrodynamic conditions: a multitechnique case study from Indian longitude zone, *Journal of Geophysical Research: Space Physics*, 117, 2012.
- 35 Heelis, R., Kendall, P., Moffett, R., Windle, D., and Rishbeth, H.: Electrical coupling of the E-and F-regions and its effect on F-region drifts and winds, *Planetary and Space Science*, 22, 743–756, 1974.
- Hua, H. W. C. Y. S. and Chunbo, Z.: Study of Ionospheric TEC Horizontal Gradient by Means of GPS Observations [J], *Chinese Journal of Space Science*, 2, 2009.

- Huang, C.-S.: Effects of the postsunset vertical plasma drift on the generation of equatorial spread F, *Progress in Earth and Planetary Science*, 5, 3, 2018.
- Hysell, D. and Burcham, J.: Ionospheric electric field estimates from radar observations of the equatorial electrojet, *Journal of Geophysical Research: Space Physics*, 105, 2443–2460, 2000.
- 5 Jakowski, N., Leitinger, R., and Ciralo, L.: Behaviour of large scale structures of the electron content as a key parameter for range errors in GNSS applications, *Annals of Geophysics*, 47, 2004.
- Jakowski, N., Stankov, S., and Klaehn, D.: Operational space weather service for GNSS precise positioning, in: *Annales Geophysicae*, vol. 23, pp. 3071–3079, 2005.
- Kassa, T. and Damtie, B.: Ionospheric irregularities over Bahir Dar, Ethiopia during selected geomagnetic storms, *Advances in Space Research*, 60, 121–129, 2017.
- 10 Kelley, M., Ilma, R. R., and Crowley, G.: On the origin of pre-reversal enhancement of the zonal equatorial electric field, *Ann. Geophys*, 27, 2053-2056, 2009.
- Kelley, M. C.: *The Earth's ionosphere: plasma physics and electrodynamics*, vol. 96, Academic press, 2009.
- Lee, J., Pullen, S., Datta-Barua, S., and Enge, P.: Assessment of ionosphere spatial decorrelation for global positioning system-based aircraft landing systems, *Journal of Aircraft*, 44, 1662–1669, 2007.
- 15 Lee, J., Datta-Barua, S., Zhang, G., Pullen, S., and Enge, P.: Observations of low-elevation ionospheric anomalies for ground-based augmentation of GNSS, *Radio Science*, 46, 2011.
- Lee, J. H., Pullen, S., Datta-Barua, S., and Enge, P.: Assessment of nominal ionosphere spatial decorrelation for laas, in: *2006 IEEE/ION Position, Location, And Navigation Symposium*, 2010.
- 20 Loewe, C. A. and Pröls, G. W.: Classification and mean behavior of magnetic storms, *Journal of Geophysical Research: Space Physics*, 102, 14 209–14 213, 1997.
- Luo, M., Pullen, S., Akos, D., Xie, G., Datta-Barua, S., Walter, T., and Enge, P.: Assessment of ionospheric impact on LAAS using WAAS supertruth data, in: *Proceedings of The ION 58th Annual Meeting*, pp. 24–26, Citeseer, 2002.
- Ma, G. and Maruyama, T.: A super bubble detected by dense GPS network at East Asian longitudes., *Geophys. Res. Lett.*, 133, L21103, 25 2006.
- Magdaleno, S., Herraiz, M., Altadill, D., and Benito, A.: Climatology characterization of equatorial plasma bubbles using GPS data, *Journal of Space Weather and Space Climate*, 7, A3, 2017.
- Manju, G. and Haridas, M. M.: On the equinoctial asymmetry in the threshold height for the occurrence of equatorial spread F, *Journal of Atmospheric and Solar-Terrestrial Physics*, 124, 59–62, 2015.
- 30 Manju, G., Devasia, C., and Ravindran, S.: The seasonal and solar cycle variations of electron density gradient scale length, vertical drift and layer height during magnetically quiet days: Implications for Spread F over Trivandrum, India, *Earth, planets and space*, 61, 1339–1343, 2009.
- Manju, G., Haridas, M., Ravindran, S., Pant, T. K., and Ram, S. T.: Equinoctial asymmetry in the occurrence of equatorial spread-F over Indian longitudes during moderate to low solar activity period 2004-2007, *94.20. dt; 94.20. Vv; 96.60. qd*, 2012.
- 35 Manoj, C. and Maus, S.: A real-time forecast service for the ionospheric equatorial zonal electric field., *Space Weather*, 10, <https://doi.org/http://dx.doi.org/10.1029/2012SW00082>, 2012.
- Martins, C. R., Mendillo, M. J., and Aarons, J.: Toward a synthesis of equatorial spread F onset and suppression during geomagnetic storms, *J. Geophys. Res.*, 110, A07306, <https://doi.org/10.1029/2003JA010362>, 2005.

- Maruyama, T., Saito, S., Kawamura, M., Nozaki, K., Krall, J., and D.Huba, J.: Equinoctial asymmetry of a low-latitude ionosphere-thermosphere system and equatorial irregularities: Evidence for meridional wind control., *Ann. Geophys.*, 27, 2027-2034, <https://doi.org/10.5194/angeo-27-2027-2009>, 2006.
- Mendillo, M., Baumgardner, J., Pi, X., Sultan, P. J., and Tsunoda, R.: Onset conditions for equatorial spread F, *Journal of Geophysical Research: Space Physics*, 97, 13 865–13 876, 1992.
- Mendillo, M., Lin, B., and Aarons, J.: The application of GPS observations to equatorial aeronomy., *Radio Sci.*, 35, 885-904., 2000.
- Mendillo, M., Meriwether, J., and Biondi, M.: Testing the thermospheric neutral wind suppression mechanism for day-to-day variability of equatorial spread F., *J. Geophys. Res.*, 106, 3655., 2001.
- Muella, M., De Paula, E., Kantor, I., Batista, I., Sobral, J., Abdu, M., Kintner, P., Groves, K., and Smorigo, P.: GPS L-band scintillations and ionospheric irregularity zonal drifts inferred at equatorial and low-latitude regions, *Journal of Atmospheric and Solar-Terrestrial Physics*, 70, 1261–1272, 2008.
- Mungufeni, P., Jurua, E., and Habarulema, J.: Trends of ionospheric irregularities over African low latitude region during quiet geomagnetic conditions., *J. Atmos. Solar Terr. Phys.*, 138-139, 261-267, <https://doi.org/http://dx.doi.org/10.1016/j.jastp.2016.01.015>, 2016.
- Mushini, S. C., P. T. J. R. B. L. J. W. M. and Pokhotelov, D.: Improved amplitude and phase scintillation indices derived from wavelet detrended high latitude GPS data, *PS Solut.*, <https://doi.org/10.1007/s10291-011-0238-4>, 2011.
- Nava, B., Radicella, S., Leitinger, R., and Coisson, P.: Use of total electron content data to analyze ionosphere electron density gradients, *Advances in Space Research*, 39, 1292–1297, 2007.
- Nayak, C., Tsai, L.-C., Su, S.-Y., Galkin, I., Caton, R., and Groves, K.: Suppression of ionospheric scintillation during St. Patrick's Day geomagnetic super storm as observed over the anomaly crest region station Pingtung, Taiwan: A case study, *Advances in Space Research*, 60, 396-405, <https://doi.org/http://dx.doi.org/10.1016/j.asr.2016.11.036>, 2017.
- Nishioka, M., Saito, A., and Tsugawa, T.: Occurrence characteristics of plasma bubble derived from global ground-based GPS receiver networks, *J. Geophys. Res.*, 113, A05301, <https://doi.org/10.1029/2007JA012605>, 2008.
- Oladipo, O. A. and Schuler, T.: Magnetic storm effect on the occurrence of ionospheric irregularities at an equatorial station in the African sector, *Ann.Geophys.*, 56, 5, A0565, <https://doi.org/10.4401/ag-6247>, 2013a.
- Oladipo, O. A. and Schuler, T.: Equatorial ionospheric irregularities using GPS TEC derived index., *Atmos. Sol. Terr. Phys.*, 92, 78-82., 2013b.
- Oladipo, O. A., Adeniyi, J. O., Olawepo, A. O., and Doherty, P. H.: Large-scale ionospheric irregularities occurrence at Ilorin, Nigeria, *Space Weather.*, 12, 300-305., <https://doi.org/10.1002/2013SW000991>, 2014.
- Olwendo, J., Cilliers, P., Weimin, Z., Ming, O., and Yu, X.: Validation of ROTI index for ionospheric amplitude scintillation measurements in a low latitude region over Africa., *Radio Science*, 2018.
- Olwendo, O., Baluku, T., Baki, P., Cilliers, P., Mito, C., and Doherty, P.: Low latitude ionospheric scintillation and zonal irregularity drifts observed with GPS-SCINDA system and closely spaced VHF receivers in Kenya, *Adv. in Space Res.*, 51, 1715-1726., <https://doi.org/http://dx.doi.org/10.1016/j.asr.2012.12.017>, 2013.
- Ossakow, S. L.: Spread-F theories—A review, *Journal of Atmospheric and Terrestrial Physics*, 43, 437–452, 1981.
- Otsuka, Y., Shiokawa, K., and Ogawa, T.: Equatorial ionospheric scintillations and zonal irregularity drifts observed with closely spaced GPS receivers in Indonesia., *J. Meteorol. Soc. Jpn.*, 84A, 343-351, 2006.
- Otsuka, Y., Ogawa, T., et al.: VHF radar observations of nighttime F-region field-aligned irregularities over Kototabang, Indonesia, *Earth, planets and space*, 61, 431–437, 2009.

- Paznukhov, V., Carrano, C., Doherty, P., Groves, K., Caton, R.G., a. V. C., Seemala, G., Bridgwood, C., Adeniyi, J., Amaeshi, L., Dامتie, B., a. D. M. F., Ndeda, J., Baki, P., Obrou, O., Okere, B., and Tsidu, G.: Equatorial plasma bubbles and L-band scintillations in Africa during solar minimum., *Ann. Geophys.*, 30, 675-682, 2012.
- Pi, X., Mannucci, A. J., Lindqwister, U. J., and Ho, C.: Monitoring of Global Ionospheric Irregularities using the worldwide GPS, *Geophys. Res. Lett.*, 24, 2283-2286, <https://doi.org/10.1029/97GL02273>, 1997.
- Pradipta, R. and Doherty, P. H.: Assessing the occurrence pattern of large ionospheric TEC gradients over the Brazilian airspace, *Navigation: Journal of The Institute of Navigation*, 63, 335-343, 2016.
- Radicella, S. M., Nava, B., Coisson, P., Kersley, L., and Bailey, G. J.: Effects of gradients of the electron density on Earth-space communications, *Annals of Geophysics*, 47, 2004.
- 10 Ram, S. T., Rao, P. R., Prasad, D., Niranjan, K., Babu, A. R., Sridharan, R., Devasia, C., and Ravindran, S.: The combined effects of electrojet strength and the geomagnetic activity (Kp-index) on the post sunset height rise of the F-layer and its role in the generation of ESF during high and low solar activity periods, *Ann. Geophys.*, 25, 2007.
- Rao, P. R., Krishna, S. G., Niranjan, K., and Prasad, D.: Study of spatial and temporal characteristics of L-band scintillations over the Indian low-latitude region and their possible effects on GPS navigation, in: *Annales Geophysicae*, vol. 24, pp. 1567-1580, 2006a.
- 15 Rao, P. R., Krishna, S. G., Niranjan, K., and Prasad, D.: Temporal and spatial variations in TEC using simultaneous measurements from the Indian GPS network of receivers during the low solar activity period of 2004-2005, in: *Annales Geophysicae*, vol. 24, pp. 3279-3292, 2006b.
- Rastogi, R. and Woodman, R.: Spread F in equatorial ionograms associated with reversal of horizontal F region electric field, in: *Annales de Geophysique*, vol. 34, pp. 31-36, 1978.
- 20 Rastogi, R., Kitamura, T., and Kitamura, K.: Geomagnetic field variations at the equatorial electrojet station in Sri Lanka, Peredinia, in: *Annales Geophysicae*, vol. 22, pp. 2729-2739, 2004.
- Rastogi, R. G. and Klobuchar, J. A.: Ionospheric electron content within the equatorial F2 layer anomaly belt., *J. Geophys. Res.*, 95(A11),19,045-19,052, 1990.
- Ratnam, D. V., Vishnu, T. R., and Harsha, P. B. S.: Ionospheric Gradients Estimation and Analysis of S-Band Navigation Signals for NAVIC
- 25 System, *IEEE Access*, 6, 66 954-66 962, 2018.
- Ravi Chandra, K., Satya Srinivas, V., and Sarma, A.: Investigation of ionospheric gradients for GAGAN application, Earth, planets and space, 61, 633-635, 2009.
- Ray, S., Paul, A., and Dasgupta, A.: Equatorial scintillations in relation to the development of ionization anomaly, in: *Annales Geophysicae*, vol. 24, pp. 1429-1442, 2006.
- 30 Rishbeth, H.: Polarization fields produced by winds in the equatorial F-region, *Planetary and Space Science*, 19, 357-369, 1971.
- Rungraengwajjake, S., Supnithi, P., Saito, S., Siansawasdi, N., and Saekow, A.: Ionospheric delay gradient monitoring for GBAS by GPS stations near Suvarnabhumi airport, Thailand, *Radio Science*, 50, 1076-1085, 2015.
- Saito, S. and Yoshihara, T.: Evaluation of extreme ionospheric total electron content gradient associated with plasma bubbles for GNSS Ground-Based Augmentation System, *Radio Science*, 52, 951-962, 2017.
- 35 Sardón, E. and Zarraoa, N.: Estimation of total electron content using GPS data: How stable are the differential satellite and receiver instrumental biases?, *Radio science*, 32, 1899-1910, 1997.
- Seba, E. and Nigussie, M.: Investigating the effect of geomagnetic storm and equatorial electrojet on equatorial ionospheric irregularity over East African sector., *Adv. Space Res.*, 58,1708-1719, 2016.

- Seba, E. and Tsegaye, K. G.: Characterization of ionospheric scintillation at a geomagnetic equatorial region station., *Adv. Space Res.*, 56, 2057-2063, 2015.
- Seba, E. B., Nigusse, M., and Moldwin, M. B.: The relationship between equatorial ionization anomaly and nighttime equatorial spread F in East Africa, *Advances in Space Research*, 62, 1737–1752, 2018.
- 5 Seemala, G. and Valladares, C.: Statistics of total electron content depletions observed over the South American continent for the year 2008, *Radio Science*, 46, RS5019, 2011.
- Sreeja, V., Devasia, C., Ravindran, S., and Pant, T. K.: Observational evidence for the plausible linkage of Equatorial Electrojet (EEJ) electric field variations with the post sunset F-region electrodynamics, in: *Annales geophysicae: atmospheres, hydrospheres and space sciences*, vol. 27, p. 4229, 2009.
- 10 Sripathi, S., Kakad, B., and Bhattacharyya, A.: Study of equinoctial asymmetry in the Equatorial Spread F (ESF) irregularities over Indian region using multi-instrument observations in the descending phase of solar cycle 23, *J. Geophys. Res.*, 116, A11302, <https://doi.org/10.1029/2011JA016625>., 2011.
- Su, S.-Y., Liu, C., Ho, H., and Chao, C.: Distribution characteristics of topside ionospheric density irregularities: Equatorial versus midlatitude regions, *Journal of Geophysical Research: Space Physics*, 111, 2006.
- 15 Sultan, P.: Linear theory and modeling of the Rayleigh-Taylor instability leading to the occurrence of equatorial spread F, *Journal of Geophysical Research: Space Physics*, 101, 26 875–26 891, 1996.
- Sun, Y.-Y., Matsuo, T., Araujo-Pradere, E. A., and Liu, J.-Y.: Ground-based GPS observation of SED-associated irregularities over CONUS, *Journal of Geophysical Research: Space Physics*, 118, 2478–2489, 2013.
- Susnik, A. and Forte, B.: Ionospheric scintillation activity measured in the African sector, paper presented at General Assembly and Scientific Symposium, XXXth URSI, Istanbul, Turkey., 2011.
- 20 Takahashi, H., Wrasse, C., Denardini, C., Pádua, M., de Paula, E., Costa, S., Otsuka, Y., Shiokawa, K., Monico, J. G., Ivo, A., et al.: Ionospheric TEC weather map over South America, *Space Weather*, 14, 937–949, 2016.
- Tsunoda, R.: Control of the seasonal and longitudinal occurrence of equatorial scintillations by the longitudinal gradient in integrated E region Pederson conductivity., *J. Geophys. Res.*, 90, 447., 1985.
- 25 Tsunoda, R. T.: On the enigma of day-to-day variability in Wave structure in equatorial Spread F, *Geophys. Res. Lett.*, 32, 2005.
- Tsunoda, R. T.: On seeding equatorial spread F during solstices, *Geophys. Res. Lett.*, 37, L05102., <https://doi.org/http://dx.doi.org/10.1029/2010GL042576>., 2010.
- Tulasi Ram, S., Rao, P. V. S. R., Niranjana, K., Prasad, D. S. V. D., Sridharan, R., Devasia, C. V., and Ravindran, S.: The role of post-sunset vertical drifts at the equator in predicting the onset of VHF scintillations during high and low sunspot activity years., *Ann. Geophys.*, 24, 1609-1616, 2006.
- 30 Uemoto, J., Maruyama, T., Saito, S., Ishii, M., and Yoshimura, R.: Relationships between pre-sunset electrojet strength, pre-reversal enhancement and equatorial spread-F onset., *Annales Geophysicae (09927689)*, 28, 2010.
- Valladares, C., Basu, S., Groves, K., Hagan, M., Hysell, D., Mazzella Jr., A., and Sheehan, R.: Measurement of the latitudinal distribution of total electron content during equatorial spread-F events, *J. Geophys. Res.*, 106, 29133-29152, 2001.
- 35 Valladares, C., Villalobos, J., Sheehan, R., and Hagan, M.: Latitudinal extension of low-latitude scintillations measured with a network of GPS receivers, *Ann. Geophys.*, 22, 3155-3175, 2004.
- Watthanasangmechai, K., Yamamoto, M., Saito, A., Tsunoda, R., Yokoyama, T., Supnithi, P., Ishii, M., and Yatini, C.: Predawn plasma bubble cluster observed in Southeast Asia, *Journal of Geophysical Research: Space Physics*, 121, 5868–5879, 2016.

- Wernik, A. and Liu, C.: Ionospheric irregularities causing scintillation of GHz frequency radio signals, *Journal of Atmospheric and Terrestrial Physics*, 36, 871–879, 1974.
- Wiens, R. H., Ledvina, B. M., a. K. P. M., Afewerki, M., and Mulugheta, Z.: Equatorial plasma bubbles in the ionosphere over Eritrea: Occurrence and drift speed, *Ann. Geophys.*, 24, 1443–1453, 2006.
- 5 Woodman, R.: Vertical drift velocities and East-West electric fields at the magnetic equator., *J. Geophys. Res.*, 75(31), 6249-6259, <https://doi.org/10.1029/JA075i031p06249>, 1970.
- Yizengaw, E. and Moldwin, M. B.: African Meridian B-field Education and Research (AMBER) array., *Earth Moon Planet*, 104, 237-246, <https://doi.org/10.1007/s11038-008-9287-2>, 2009.
- Yizengaw, E., Moldwin, M. B., Mebrahtu, A., Damtie, B., Zesta, E., Valladares, C. E., and Doherty, P.: Comparison of storm  
 10 time equatorial ionospheric electrodynamics in the African and American sectors, *J. Atmos. Sol.-Terr. Phys.*, 73(1), 156–163, <https://doi.org/10.1016/j.jastp.2010.08.008>., 2011.
- Yizengaw, E., Zesta, E., a. M. M. B., Damtie, B., Mebrahtu, A., Valladares, C. E., and Pfaff, R. F.: Longitudinal differences of ionospheric vertical density distribution and equatorial electrodynamics., *J. Geophys. Res.*, 117, A07312, <https://doi.org/10.1029/2011JA017454>., 2012.
- 15 Yizengaw, E., Moldwin, M. B., Zesta, E. and Biouele, C. M., Damtie, B., Mebrahtu, A., Rabiou, B., Valladares, C. F., and Stoneback, R.: The longitudinal variability of equatorial electrojet and vertical drift velocity in the African and American sectors., *Ann. Geophys.*, 32, 231-238, 2014.
- Yoshihara, T., Sakai, T., Fujii, N., and Saitoh, A.: An investigation of local-scale spatial gradient of ionospheric delay using the nation-wide GPS network data in Japan, in: ION National Technical Meeting, San Diego, CA, 2005.