

REPLY TO REVIEWER #1 COMMENTS

We thank the referee for the recommendations to improve the manuscript. In the following we provide a response to all items included in the referee report. We hope that the changes made in the text will render it more comprehensive. [The new added text is shown in blue in the marked-up version of the manuscript.](#)

Reviewer comments

- 1. This manuscript points out to two earlier papers [Voitcu2016], [Voitcu2017] for the description of the simulation setup. But in order to be more self-contained, I would ask the authors to add some important parameters to the text. In addition, I could not find anywhere the values of other critical quantities (or at least it was not clear to me where to find them or calculate them). I think the manuscript and its readers will benefit of those details. i) ion or electron plasma beta of the plasma jet including only thermal pressure (not the bulk velocity). Or equivalently, the value of the electron thermal speed. The value of $\eta=500$ allows to obtain ω_{pi}/ω_{ci} , but the ion (or electron) thermal speed are still needed to determine other quantities. ii) What are the boundary conditions? (I know that this is mentioned in previous papers, but nothing here) iii) How far away are the boundaries with respect to the plasma cloud and/or tangential discontinuities? Table 1 of [Voitcu2016] is not clear regarding this: the simulation box is expressed in number of grid points, but it is more helpful to convert it to electron gyroradius or other physical units (the lengths in all the figures should also be normalized to some meaningful physical units, if possible). iv) What is the number of particles per cell and/or the total number of particles?*

Answer:

The second section of the article (“*Simulation setup*”) has been modified to include the referee’s requests regarding: **(i)** the electron beta-parameter computed without the dynamic pressure [$\beta_e=0.09$, [pg. 3, lines 18-19](#)] and the electron-to-ion thermal speed ratio [$V_{Te}/V_{Ti}=30$, [pg. 3, line 14](#)], **(ii)** the boundary conditions [periodic for both particles and fields, [pg. 3, lines 28-32](#)], **(iii)** the size of the simulation box [155×405×805 grid cells, [pg. 3, line 17](#)] and plasma cloud [50×50×30 grid cells, [pg. 3, line 17](#)] and also the position of the tangential discontinuity [from $x_1=79$ to $x_2=85$, [pg. 2, line 39](#)], **(iv)** the number of particles used in the simulation (total [30 millions for each species] and per cell [400 for each species], [pg. 3, lines 30-32](#)). For consistency with our previous two articles on this topic (*Voitcu and Echim, 2016, 2017*), we decided to keep the same units for the spatial coordinates which are normalized to the grid spacing Δx . To convert the units to electron gyroradii, we provide the ratio between Δx and the gyroradius of thermal electrons in the injection region: $\Delta x/r_{Le}=0.5$.

- 2. One parameter that I am puzzled about is the grid resolution. Table 1 of [Voitcu2016] says that $\Delta x/\lambda_{De} = 2.5$. Is it exactly the same for this paper? If so, that would indicate an under-resolved grid cell size, possibly leading to numerical heating. Is there any indication of that effect? How well conserved is the total energy in those simulations? Have the authors used some high order shape function or some kind of current smoothing to prevent numerical heating? And how well resolved is the electron gyroradius compared to the grid cell size? (this quantity should also be well resolved).*

Answer:

The ratio between the grid spacing and the electron Debye length is indeed equal to $\Delta x/\lambda_{De}=2.5$, as in our previous simulations (Voitcu and Echim, 2016, 2017). The time step and grid spacing used to run the simulations have been carefully selected to avoid the numerical instabilities related to the discretization of space and time that could lead to unphysical effects, as the numerical heating mentioned by the referee. According to Cai *et al.* (2010; section 2.11, page 39) and Birdsall and Langdon (1991; section 8-13, page 179), for a linear weighting scheme (as the one used in our simulations), the following interval:

$$0.1 \leq \frac{\lambda_{De}}{\Delta x} \leq 0.3$$

must be avoided when selecting the spatial resolution of the simulation. In our case, the ratio between the electron Debye length and the grid spacing is $\lambda_{De}/\Delta x=0.4$, thus outside the aforementioned forbidden interval. Moreover, we apply a smoothing procedure to the current density in order to improve the overall accuracy of the simulation and reduce the numerical noise that could cause unwanted heating. For this purpose, the 3-D version of the three-point binomial filter along each direction in configuration space is used, leading to 27 weights that are applied to smooth the current density (see Birdsall and Langdon, 1991; appendix C, page 437, for the 1-D and 2-D cases):

$$\vec{J}_s(i, j, k) = \frac{M \cdot \vec{J}(i, j, k) + S \cdot S_{terms} + K \cdot K_{terms} + C \cdot C_{terms}}{M + 6S + 12K + 8C}$$

where S_{terms} , K_{terms} and C_{terms} correspond to the values of \vec{J} in 26 neighboring nodes around (i, j, k) , while $M=8$, $S=4$, $K=2$ and $C=1$. This smoothed current density is further used in Ampère's law to obtain the self-consistent electric field.

In Figure R1 we illustrate the time history of the total energy corresponding to our simulation (kinetic + electric + magnetic). We show the deviation of the total energy from its initial value. As can be noticed, there is a very small increase of the total energy during $4T_{Li}$ of runtime. Indeed, the asymptotic value of $\Delta W/W_0=0.0016\%$ (the red line in Figure R1), while the maximum deviation during the initial stages of the simulation is smaller than 0.004%. This small increase of the total energy is not forbidden for momentum conserving codes (as ours) which are not strictly energy conserving. Thus, we consider that the total energy is sufficiently well conserved in our simulations.

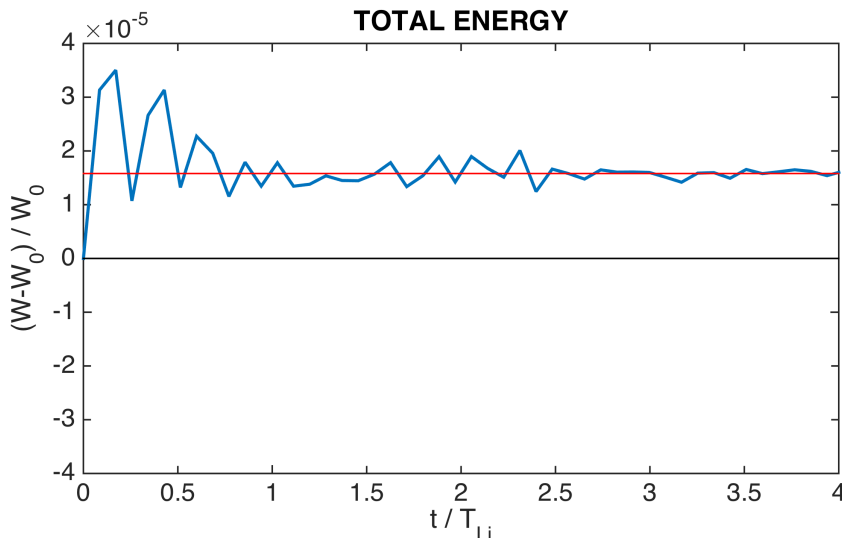


Figure R1. Time history of the total energy W of the simulated system (kinetic + electric + magnetic) during four ion Larmor periods of runtime. W_0 is the initial energy.

We consider that the electron gyroradius is sufficiently well resolved by the spatial grid used in our simulations. The ratio between the gyroradius of the thermal electrons in the injection region and the grid spacing is equal to $r_{Le}/\Delta x=2.1$. Thus, the Larmor orbit of such an electron is covered by 25 grid nodes in the perpendicular plane to the magnetic field. Since we are using the linear weighting for the shape function, a linear grid-to-particle interpolation scheme is also used to compute the fields in the position of each particle. In Figure R2 we illustrate the trajectory of an electron extracted from the actual simulation used in this manuscript. We show a single electron Larmor period. The gyration velocity is equal to $0.97V_{Te}$. As can be noticed, the orbit is well resolved and the Larmor radius has the correct value. Note the zero-order electric drift along $+Ox$. Also, there is a small grad-B drift along $-Oy$ due to some small variations of the magnetic field around the background value at the left side of the tangential discontinuity.

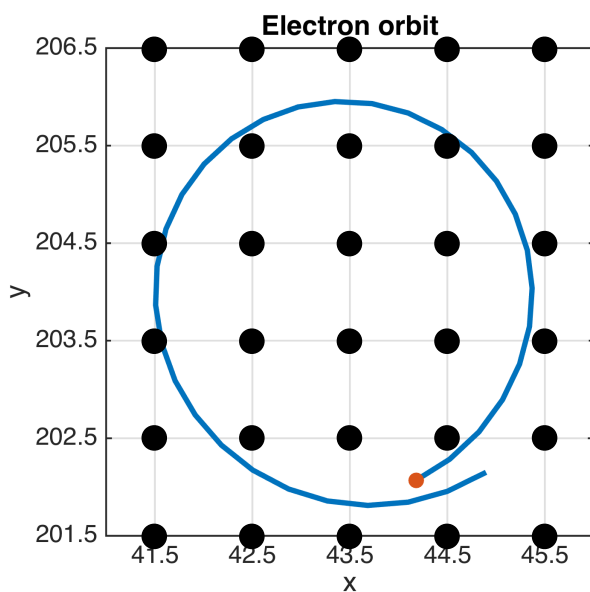


Figure R2. The trajectory of a thermal electron at the left side of the tangential discontinuity during a single gyration period. The red point marks the initial position of the electron, while the black dots show the grid points where the fields are computed.

3. *I understand that the proposed mechanism for the formation of crescent shaped electrons is based on the remote sensing of electrons with an electron gyroradius on the order of the magnetic field gradient in a tangential discontinuity. As mentioned in the references of this manuscript, similar mechanisms were proposed for ions, which have a much larger gyroradii and therefore they are much easier to detect. Is there any chance to actually measure in-situ such a steep magnetic field gradients? (in the Earth magnetosphere, for example by MMS). I am not sure about that, in particular considering the low-beta plasma used in this simulation study, which implies a very small electron gyroradii. I would appreciate if the authors could add some studies with explicit numbers for measured tangential discontinuities (and corresponding electron gyroradii), please.*

Answer:

The mechanism we propose for the formation of crescent-shaped electron velocity distribution functions does not require tangential discontinuities as thin as the electron gyroradius. Instead, it requires a spatial sampling area of the velocity distribution function of the order of few electron gyroradii. Indeed, we used here spatial bins having the size of $3 \times 6r_{Le}$ in the perpendicular plane to the magnetic field, comparable, for instance, with the

distance covered by MMS during 30 ms of flight within a plasma flow of 100 km/s at the magnetopause. If the VDF's sampling area is much larger than few electron gyroradii, the crescents will not be observed for electrons since the remote sensing effect will vanish at such large scales. We consider that the electron crescents produced by the mechanism discussed in this paper could be measured in-situ by the very high time resolution spectrometer on-board MMS in the vicinity of the magnetopause and in the presence of a deflected plasma jet.

The thickness of Earth's magnetopause is of the order of few hundreds of kilometers (or, equivalently, few proton gyroradii), as has been determined, for instance, from Cluster data (*Haaland et al.*, 2004). Thus, the magnetopause (which under certain circumstances can be approximated with a tangential discontinuity) is much larger than the electron gyroradii. Nevertheless, since the conditions for the formation of crescent-shaped electron VDFs do not require a TD as thin as the electron gyroradius, we believe that such distributions can be formed and measured at the Earth's magnetopause. To render more clearly the aspect of TD's thickness into our article, an explanatory text has been added in Section 2 (pg. 2, lines 38-41).

It should be mentioned that for the particular set of parameters used in our simulations, the thickness of the simulated TD is comparable with few thermal electron gyroradii. Indeed, due to computational constraints, we considered $m_i/m_e=36$ and $V_{Te}/V_{Ti}=30$. Nevertheless, the kinetic effects discussed here should be observed also in the case of a more realistic input. This issue will be addressed in our future simulations.

4. Related to the previous question: How about high-beta plasma effects? In this parameter regime, the electron gyroradii would be larger and easier to measure. Would there be any significant difference for the proposed mechanism in that parameter regime? Have the authors tried such simulations? If not, why not? In such cases electrostatic effects such as polarization electric fields should be diminished. I think a brief discussion about this issue will benefit the readers by making the results of this manuscript more general and with a wider applicability.

Answer:

The laboratory experiments of *Wessel et al.* (1988) have shown that both low and high-beta plasmoids do propagate across transverse magnetic fields through the effect of self-polarization, for $0.01 < \beta < 300$. Thus, the electrostatic polarization of *Schmidt* (1960) sustains the cross-propagation even for very high-beta plasmoids/clouds/jets. Nevertheless, to our knowledge, there are no detailed kinetic theoretical studies or full-particle numerical simulations on the topic of high-beta plasma jets interaction with non-uniform magnetic fields. Alongside with a comprehensive theoretical investigation of low-beta plasma jets, *Lemaire* (1985a, 1985b) discusses briefly the dynamics of high-beta plasma jets in the framework of the impulsive penetration mechanism. In this case, the diamagnetic effects are important and the geomagnetic field is strongly perturbed by the internal magnetic field produced by the plasma jet itself. As in the case of low-beta jets, the self-polarization electric field also sustains the cross-propagation of the high-beta jet.

We haven't investigated yet the problem of high-beta plasma jets, but it is definitely an important topic for us and shall be addressed in our future simulations. In these cases of high-beta plasma jets, the self-consistent magnetic field produced by the plasma jet itself is comparable with the background (external) magnetic field. This additional complication will

certainly modify the dynamics of the simulated particles. As a result, the velocity filtering effect could be directly affected, since the magnetic field gradient can change in terms of both intensity and scale. Moreover, we also expect that the remote sensing effect to be affected by the high-beta plasma regime. At this moment, we cannot estimate to what extent the magnetic perturbation produced by the high-beta jet will affect the formation of crescent-shaped electron VDFs. Supplemental simulations are required in this case. To render more clearly the aspect of high-beta plasma jets in our manuscript, an explanatory text has been added in Section 3 (pg. 6, lines 10-13).

REFERENCES

- Birdsall, C. K. and Langdon, A. B.: Plasma Physics via Computer Simulation, Taylor and Francis, New York, 1991.
- Cai, D., Li, Y., Nishikawa, K.-I., Xiao, C., Yan, X., Pu, Z.: Parallel 3-D electromagnetic particle code using high performance Fortran: Parallel TRISTAN, page 25 in „Space Plasma Simulation”, editors: Buchner, J., Dum, C. T. and Scholer, M., Springer, Berlin, 2010.
- Haaland, S. E., et al.: Four-spacecraft determination of magnetopause orientation, motion and thickness: Comparison with results from single-spacecraft methods, *Ann. Geophys.*, 22, 1347–1365, doi:10.5194/angeo-22-1347-2004, 2004.
- Lemaire, J.: Plasmoid motion across a tangential discontinuity (with applications to the magnetopause), *J. Plasma Phys.*, 33, 425-436, 1985a.
- Lemaire, J.: Simulation of Solar Wind-Magnetosphere Interaction in: Holtet J. A., Egeland A. (eds.) „The Polar Cusp”, NATO ASI Series (Series C: Mathematical and Physical Sciences), vol. 145, Springer, Dordrecht, 1985b.
- Schmidt, G.: Plasma motions across magnetic fields, *The Physics of Fluids*, 3, 961-965, 1960.
- Voitcu, G. and Echim, M.: Transport and entry of plasma clouds/jets across transverse magnetic discontinuities: Three-dimensional electromagnetic particle-in-cell simulations, *J. Geophys. Res. Space Physics*, 121, 4343-4361, doi: 10.1002/2015JA021973, 2016.
- Voitcu, G. and Echim, M.: Tangential deflection and formation of counterstreaming flows at the impact of a plasma jet on a tangential discontinuity, *Geophys. Res. Lett.*, 44, 5920–5927, doi:10.1002/2017GL073763, 2017.
- Wessel, F. J., Hong, R., Song, J., Fisher, A., Rostoker, N., Ron, A., Li, R., Fan, R. Y.: Plasmoid propagation in a transverse magnetic field and in a magnetized plasma, *The Physics of Fluids*, 31, 3778, doi:10.1063/1.866897, 1988.

REPLY TO REVIEWER #2 COMMENTS

We thank the referee for the recommendations to improve the manuscript. In the following we provide a response to all items included in the referee report. We hope that the changes made in the text will render it more comprehensive. **The new added text is shown in red in the marked-up version of the manuscript.**

Reviewer comments

1. *What is the relevance of the number of the dielectric constant given on page 5, line 13? It is not commented further in the paper.*

Answer:

The dielectric constant is relevant in the context of plasma self-polarization. This is the actual physical mechanism which sustains the propagation of the plasma jet across the transverse magnetic field in our simulations. For plasmas with $\epsilon \gg 1$, as space plasmas for instance, collective dielectric effects are important, as discussed by *Schmidt* (1960) and *Lemaire* (1985). In this case, a polarization electric field is formed inside the localized plasma structure and enables the further convection of the jet across the perpendicular magnetic field (see *Voitcu and Echim*, 2016 for a detailed discussion on this topic in the context of our simulations). To render more clearly this aspect into our manuscript, an explanatory text has been added in Section 2 (pg. 3, lines 21-23).

2. *The authors note themselves that crescent-shaped electron distributions are also found in connection with X-lines and reconnection regions at the dayside magnetopause. It would be helpful if the authors discussed in more detail similarities and differences between those distributions and the ones found in this paper. Is it possible to differentiate by the two cases by just inspecting the distribution functions?*

Answer:

The main differences between the crescent-shaped electron VDFs obtained in our simulations and those reported in connection with magnetic reconnection sites at the dayside magnetopause are related to (i) the different physical mechanisms leading to their formation and also with (ii) the different spatial geometry involved in those processes.

The physical mechanisms proposed by, e.g., *Bessho et al.* (2016), *Shay et al.* (2016) or *Lapenta et al.* (2017), for formation of crescent-shaped electron VDFs involve meandering electron orbits in the vicinity of X-lines, thus in spatial regions characterized by a magnetic field reversal. In a similar geometry, *Egedal et al.* (2016) proposed that the perpendicular crescent-shaped distributions are produced by the diamagnetic drift of well-magnetized electrons in a thin boundary layer localized along the magnetopause separatrix. In our case, the physical mechanism we propose does not involve the spatial reversal of the magnetic field, since we consider a parallel tangential discontinuity. The crescent-shaped electron VDFs obtained in our simulations are formed by two combined effects: (i) the velocity filtering effect produced by the grad-B drift and (ii) the remote sensing effect of large Larmor radius electrons.

The electron crescents reported here are obtained in connection to a jetting plasma structure that moves in opposite directions tangentially to the parallel discontinuity surface

(our simulated magnetopause) and perpendicular to the magnetic field; they are found inside and also in the vicinity of the discontinuity towards the $-\vec{B} \times \nabla B$ direction (which is the $-\vec{M}$ direction in the (L, M, N) boundary-normal coordinates that are used, for instance, in *Burch et al. (2016)*). On the other hand, the electron crescents reported by *Burch et al. (2016)* have been observed in connection to the anti-parallel jetting along the \vec{L} direction produced by magnetic reconnection at the dayside magnetopause; they are found close to the magnetic null region and along the \vec{N} direction, as obtained also by, e.g., *Bessho et al. (2016)* and *Lapenta et al. (2017)*. In the study of *Egedal et al. (2016)*, the electron crescents are obtained in a boundary layer having the width of $\sim 1r_{Le}$ all along the low-density separatrix. On the contrary, in our simulations, the electron crescents are obtained over a region in the perpendicular plane to the magnetic field that covers $\sim 12r_{Le}$ along Ox (the \vec{N} direction) and $\sim 20-30r_{Le}$ along Oy (the \vec{M} direction) (see Figures A2 and A3 in Appendix A of the manuscript). Also, the low-energy cut-off in the perpendicular velocity space reported by *Egedal et al. (2016)* is related to an exclusion perpendicular energy that varies with distance from the separatrix along the \vec{N} direction, while in our simulations the low-energy cut-off varies with distance from the jet's centre along the \vec{M} direction.

As emphasized in the concluding remarks of our manuscript: *"the crescent is a persistent feature of the VDFs that can be detected at relatively large distances from the interaction with the discontinuity and therefore might be used as a kinetic signature of such interaction"*. Thus, the crescent-shaped electron VDFs can be used to identify plasma jets that have interacted directly with a magnetic discontinuity, but additional information is needed as, for instance, data about the magnetic field, particle density or bulk velocity. A simple inspection of only crescents cannot discriminate between the different physical mechanisms leading to their formation.

To render more clearly this aspect into our manuscript, an explanatory text has been added in Section 4 (pg. 7, lines 36-40 & pg. 8, lines 1-8).

3. *I think that the authors should discuss the relevance of their results a little bit more. They mention that the distribution functions can be used to estimate the geometry of jets, but there should be further points to discuss. For example, I assume that the resulting distribution functions are unstable to wave generation. What was could be expected to be excited? And how would moment calculations, which assume Maxwellian distribution, be affected?*

Answer:

The velocity distribution functions obtained in our simulations are, indeed, unstable to wave generation. The ring-shaped electron VDFs produced by the velocity-filtering effect can generate, for instance, cyclotron harmonic waves (e.g. *Tataronis and Crawford, 1970; Lee and Birdsall, 1978*). It should be mentioned that the study of waves generation and instabilities in this simulation is beyond the scope of the present paper and shall be addressed in our future studies. Thus, it might be premature at the present time to approach this aspect into the manuscript.

Under certain circumstances, the moment calculation can be affected by the shape of the velocity distribution function. It has been shown by *Lee et al. (2004)* that the moment computation for non-gyrotropic (or crescent) VDFs may provide unrealistically large bulk velocities. Indeed, in such cases of non-Maxwellian distributions, large velocity moments can

be obtained even for a stationary plasma, if those distributions are produced by a remote sensing effect, as the one discussed also in this paper. Therefore, when calculating the moments of this kind of velocity distribution functions, both the distributions and moments should be examined carefully to establish if the large velocity moments really indicate an actual plasma flow or not.

4. *No ion distributions are shown in this paper. The authors could at least comment on if any effects of the interaction are shown in those.*

Answer:

The crescent-shaped VDFs are observed only for electrons in the current simulations, while the ion VDFs show no crescent features. Indeed, for the particular set of parameters used here, the ion grad-B drift velocity is smaller than for electrons and the corresponding velocity filtering effect is not large enough to produce an efficient scattering of ions along the $+\vec{B} \times \nabla B$ direction leading to an ion energy-dispersed structure with crescent-shaped ion distributions. Additional simulations are envisaged in the future to study the formation of crescent-shaped ion VDFs simultaneously with the electron crescents. To render more clearly this aspect into our manuscript, an explanatory text has been added in Section 3 (pg. 6, lines 14-15).

REFERENCES

- Bessho, N., Chen, L.-J., and Hesse, M.: Electron distribution functions in the diffusion region of asymmetric magnetic reconnection, *Geophys. Res. Lett.*, 43, 1828-1836, doi:10.1002/2016GL067886, 2016.
- Burch, J. L., et al.: Electron-scale measurements of magnetic reconnection in space, *Science*, 352, aaf2939, doi:10.1126/science.aaf2939, 2016.
- Egedal, J., Le, A., Daughton, W., Wetherton, B., Cassak, P. A., Chen, L.-J., Lavraud, B., Torbert, R. B., Dorelli, J., Gershman, D. J., and Avanov, L. A.: Spacecraft Observations and Analytic Theory of Crescent-Shaped Electron Distributions in Asymmetric Magnetic Reconnection, *Physical Review Letters*, 117, 185101, doi:10.1103/PhysRevLett.117.185101, 2016.
- Lapenta, G., Berchem, J., Zhou, M., Walker, R. J., El-Alaoui, M., Goldstein, M. L., Paterson, W. R., Giles, B. L., Pollock, C. J., Russell, C. T., Strangeway, R. J., Ergun, R. E., Khotyaintsev, Y. V., Torbert, R. B., and Burch, J. L.: On the origin of the crescent-shaped distributions observed by MMS at the magnetopause, *J. Geophys. Res. Space Physics*, 122, 2024-2039, doi: 10.1002/2016JA023290, 2017.
- Lee, J. K. and Birdsall, C. K.: Velocity space ring-plasma instability, magnetized, Part I: Theory, *Phys. Fluids*, 22, 1306-1314, 1979.
- Lee, E., Wilber, M., Parks, G. K., Min, K. W., and Lee, D.-Y.: Modeling of remote sensing of thin current sheet, *Geophys. Res. Lett.*, 31, L21806, doi:10.1029/2004GL020331, 2004.
- Lemaire, J.: Plasmoid motion across a tangential discontinuity (with applications to the magnetopause), *J. Plasma Phys.*, 33, 425-436, 1985.
- Schmidt, G.: Plasma motions across magnetic fields, *The Physics of Fluids*, 3, 961-965, 1960.

Shay, M. A., Phan, T. D., Haggerty, C. C., Fujimoto, M., Drake, J. F., Malakit, K., Cassak, P. A., and Swisdak, M.: Kinetic signatures of the region surrounding the X line in asymmetric (magnetopause) reconnection, *Geophys. Res. Lett.*, 43, 4145- 4154, doi:10.1002/2016GL069034, 2016.

Tataronis, J. A. and Crawford, F. W.: Cyclotron harmonic wave propagation and instabilities I. Perpendicular propagation, *Journal of Plasma Physics*, 4, 231-248, 1970.

Voitcu, G. and Echim, M.: Transport and entry of plasma clouds/jets across transverse magnetic discontinuities: Three-dimensional electromagnetic particle-in-cell simulations, *J. Geophys. Res. Space Physics*, 121, 4343-4361, doi: 10.1002/2015JA021973, 2016.

Voitcu, G. and Echim, M.: Tangential deflection and formation of counterstreaming flows at the impact of a plasma jet on a tangential discontinuity, *Geophys. Res. Lett.*, 44, 5920–5927, doi:10.1002/2017GL073763, 2017.

Crescent-shaped electron velocity distribution functions formed at the edges of plasma jets interacting with a tangential discontinuity

Gabriel Voitcu¹, Marius Echim^{1,2}

¹Institute of Space Science, Magurele, 077125, Romania

5 ²Belgian Institute of Space Aeronomy, Brussels, B-1180, Belgium

Correspondence to: Gabriel Voitcu (gabi@spacescience.ro)

BLUE text = new text in response to Referee #1 comments

RED text = new text in response to Referee #2 comments

Abstract. In this paper we discuss numerical simulations that illustrate a physical mechanism leading to the formation of crescent-shaped electron velocity distribution functions at the edges of a high-speed plasma jet impacting on a thin, steep and impenetrable tangential discontinuity with no magnetic shear. We use three-dimensional particle-in-cell simulations to compute the velocity distribution function of electrons in different areas of the plasma jet and at different phases of the interaction with the discontinuity. The simulation setup corresponds to an idealised, yet relevant, magnetic configuration likely to be observed at the frontside magnetopause under northward interplanetary magnetic field. The combined effect of the gradient-B drift and the remote sensing of large Larmor radius electrons leads to the formation of crescent-shaped electron velocity distribution functions. We provide examples of such distributions “measured” by a virtual satellite launched into the simulation domain.

1 Introduction

The terrestrial magnetosheath is often populated by high-speed plasma jets (also called plasmoids or plasma irregularities) streaming towards the frontside magnetopause (e.g., Dmitriev and Suvorova, 2012, 2015; Karlsson et al., 2012; Gunell et al., 2014) and impact it several times per hour (Plaschke et al., 2016). These finite-size plasma structures have an excess of antisunward dynamic pressure with respect to the ambient magnetosheath (e.g., Hietala et al., 2012; Savin et al., 2012; Archer and Horbury, 2013; Plaschke et al., 2013, 2017; Karlsson et al., 2018) and their interaction with the magnetopause can trigger local and global magnetospheric and geophysical effects (e.g., Plaschke et al., 2009; Hietala et al., 2012, 2018). Dmitriev and Suvorova (2015) shows that >60% of the jets detected by the Time History of Events and Macroscale Interactions during Substorms (THEMIS) mission do penetrate inside the Earth’s magnetosphere, while the rest of <40% are not able to cross over the magnetopause. Some of the penetrating plasmoids were intersected in-situ by spacecraft deep inside the magnetosphere (e.g., Lundin and Aparicio, 1982; Woch and Lundin, 1991, 1992; Yamauchi et al., 1993; Lu et al., 2004; Gunell et al., 2012; Shi et al., 2013; Lyatsky et al., 2016).

The transport of plasma jets/clouds/blobs across various magnetic field configurations has been investigated with magnetohydrodynamic (MHD) (e.g., Ma et al., 1991; Dai and Woodward, 1994, 1995, 1998; Huba, 1996), hybrid (e.g., Savoini et al., 1994; Palmroth et al., 2018) and kinetic (e.g., Galvez, 1987; Galvez et al., 1988; Livesey and Pritchett, 1989; Galvez and Borovsky, 1991; Cai and Buneman, 1992; Neubert et al., 1992; Hurtig et al., 2003; Gunell et al., 2009) numerical simulations (see also the review by Echim and Lemaire, 2000). These previous simulations did not reveal all the fundamental aspects of jets dynamics due to the inherent physical and/or geometrical limitations. For instance, the MHD and hybrid simulations do not quantify the effect of self-polarization (Schmidt, 1960) which is purely kinetic and plays a crucial role for plasma motion across transverse magnetic fields. On the other hand, the particle-in-cell (PIC) simulations were limited by the existing computing resources and none of them succeeded to evaluate the interaction of a three-dimensional plasma jet with a tangential discontinuity (TD). Recently, Voitcu and Echim (2016, 2017) used a 3-D PIC code to simulate the dynamics of high-speed plasma jets interacting with magnetic fields typical for a tangential discontinuity with no shear. Such a configuration is similar to the magnetopause under a northward interplanetary magnetic field (IMF). It has been

shown that the plasma-field interaction process is controlled by the dynamic and kinetic pressure of the high-speed jet, its electric polarizability and the magnetic jump at the TD. It was also shown that when the dynamic pressure is large enough the jet can cross the TD, as implied by kinetic models like the impulsive penetration mechanism (Lemaire, 1977, 1985; see also Lemaire and Roth, 1991). When the dynamic pressure is small, the jet is stopped by the TD, consistent with THEMIS observations of jets reported by Dmitriev and Suvorova (2015). The dynamics of finite-size plasma jets/clouds across transverse magnetic fields has been described also with Vlasov equilibrium solutions by Echim and Lemaire (2005).

In this paper we discuss the kinetic structure of a low-beta plasma jet impacting on a thin, steep and impenetrable tangential discontinuity with no magnetic shear. The analysis is based on 3-D electromagnetic PIC simulations. We consider here an idealised, yet relevant, simulation setup that corresponds to a magnetosheath plasma jet streaming towards the frontside region of the Earth's magnetopause and interacting with it under a northward interplanetary magnetic field. The plasma jet has a relatively small momentum and it cannot move across the rather steep discontinuity; it is repelled and split in two plasma streams moving in opposite directions, tangentially to the TD surface, as discussed in detail in a previous publication (Voitcu and Echim, 2017). However, kinetic processes observed during the interaction between the jet and the discontinuity lead to the formation of crescent-shaped electron velocity distribution functions (VDFs).

Crescent-like VDFs were observed for ions in the Earth's magnetotail, close to the neutral sheet and plasma sheet boundary layer (e.g., Nakamura et al., 1991, 1992; Wilber et al., 2004), as well as in the magnetosheath, close to the magnetopause (e.g., Marcucci et al., 2004). The crescent-shaped ion VDFs have been associated with various finite Larmor radius effects (e.g., Lee et al., 2004; Marcucci et al., 2004; Voitcu and Echim, 2012; Voitcu et al., 2012). Recently, crescent-shaped VDFs were observed by the Magnetospheric Multiscale (MMS) mission for electrons close to the dayside magnetopause (Burch et al., 2016) and were associated to meandering electron orbits near magnetic field reversal in the reconnection sites (Bessho et al., 2016; Lapenta et al., 2017). Egedal et al. (2016) proposed a two-dimensional theoretical model for the formation of crescent-shaped electron VDFs in asymmetric magnetic reconnection. The magnetic configuration used in our study does not involve the presence of magnetic field reversal regions, as in, for instance, Bessho et al. (2016), Egedal et al. (2016) or Lapenta et al. (2017), since we consider a tangential discontinuity with no shear across it. The physical mechanism revealed by our PIC simulations leads to crescent-shaped VDFs and is specific to the interaction between a plasma jet and a parallel non-uniform magnetic field; it does not require magnetic reconnection. This paper provides new insight on the kinetic structure of high-speed plasma jets moving in the vicinity of unidirectional magnetic barriers. We emphasize the role of finite Larmor radius effects that give rise to crescent-shaped electron distributions in the space of perpendicular velocities. Such kind of electron VDFs can indicate the presence of a finite-size plasma jet deflected tangentially near a parallel magnetic discontinuity.

2 Simulation setup

We consider a three-dimensional simulation geometry that allows the simultaneous investigation of plasma convection along the injection direction, the electrostatic self-polarisation along the normal to the magnetic field direction and the parallel expansion along the magnetic field lines. A schematic overview of the simulation setup is given in Figure 1. The finite-size plasma jet is illustrated by the red 3-D box. We envisage the case of small Larmor radius plasma jets, i.e., the transversal dimension of the localized plasma structure is much larger than the ion Larmor radius.

The background magnetic field is parallel to $+Oz$ everywhere inside the simulation domain. Its magnitude increases by 50% between two asymptotic states, B_1 – upstream/left of TD and B_2 – downstream/right of TD. The tangential discontinuity is located between $x_1=79\Delta x$ and $x_2=85\Delta x$ (where Δx is the simulation grid spacing). Its width is of the order of few ion Larmor radii, in agreement with theoretical arguments (e.g., Willis, 1978; Roth et al., 1996) and observations (e.g., Cluster measurements, see, for instance, Haaland et al., 2004) of the magnetopause thickness. Initially, the electric field is set

to zero in the entire simulation domain. We assume that the background steady state magnetic field is established prior to the injection of the plasma jet into the simulation domain and that this configuration remains unchanged during the entire simulation runtime. The self-consistent magnetic field computed during the simulation runtime adds to the background field. Thus, the simulated plasma jet can be seen as a perturbation to the equilibrium solution describing the TD's magnetic field.

5 Our goal is to investigate the microphysics of the plasma jet – magnetic field interaction process in the vicinity of the tangential discontinuity. The study of TD's formation and stability is beyond the scope of our paper and shall be considered in our future simulations. Consequently, the background plasma is disregarded in the present work and the finite-size plasma jet is streaming in vacuum towards the magnetic discontinuity, a situation similar to a magnetosheath jet characterized by an excess of dynamic pressure in a rarefied background plasma. The kinetic features discussed in the rest of the paper do not

10 depend on the properties of the background plasma, but on the geometry of the jet and the magnetic and electric field profile.

The electrons and protons forming the 3-D plasma jet are uniformly distributed over a rectangular region localized at the left side of the TD where the magnetic field is uniform. Their initial VDF is a displaced Maxwellian with the average velocity parallel to the positive x -axis and perpendicular to the magnetic field direction: $U_0=1.2V_{Ti}$ (where V_{Ti} is the thermal velocity of protons). **The electron-to-ion thermal speed ratio is $V_{Te}/V_{Ti}=30$.** The velocities of both species are initialized

15 according to their corresponding displaced Maxwellian distribution function. Thus, at the beginning of the simulation, the plasma jet is injected into the simulation domain with an initial bulk velocity pointing towards the discontinuity surface. **The size of the simulation domain equals $155\times 405\times 805$ grid cells, while the initial size of the plasma jet is $50\times 50\times 30$ grid cells.**

The jet's plasma has a small beta ($\beta=0.1$, including both dynamic and thermal plasma pressure; $\beta_e=0.09$, including only electron thermal pressure) and a large dielectric constant ε . In the simulations discussed in this paper $\varepsilon=500$, where

20 $\varepsilon=1+m_{in}/(\varepsilon_0 B^2)=1+(\omega_{pi}/\omega_{Li})^2$ is defined as in, e.g., Chen (1974) and Lemaire (1985), with ω_{pi} the ion plasma frequency and ω_{Li} the ion Larmor frequency. **Since $\varepsilon\gg 1$, collective dielectric effects play an important role in the dynamics of the plasma jet (Schmidt, 1960; Lemaire, 1985). In this case, a polarization electric field is formed inside the plasma jet that enables its convection across the transverse magnetic field (see Voitcu and Echim, 2016 for a detailed discussion on this topic).** The ratio between the jet's transversal dimension and the ion Larmor radius is equal to 19. The total simulation time covers $4T_{Li}$

25 (where T_{Li} is the Larmor period of protons in the upstream region). This simulation configuration corresponds to the thin, steep and impenetrable TD discussed in detail by Voitcu and Echim (2016, 2017).

The PIC code is based on TRISTAN (Buneman, 1993) and has been modified to simulate finite-size plasma structures (jets/plasmoids) interacting with non-uniform magnetic fields. **The boundary conditions used are periodic for both particles and fields. In order to reduce the possible undesired effects of boundaries on the plasma dynamics, we keep the**

30 **edges of the simulation domain as far as possible from the localized plasma jet. The total number of simulated particles is 30 million for each of the two plasma species, while the number of particles per simulation grid cell at initialisation is equal to 400 per species. The proton-to-electron mass ratio is 36.** A detailed description of the PIC code is given by Voitcu (2014).

The velocity distribution function, f , at different time instances, is computed by using a uniform rectangular grid of spatial bins that covers the entire plasma jet. For each spatial bin, we calculate histograms by counting the number of

35 particles, N_i , in each cell of a uniform rectangular grid defined in the velocity space. Thus, the VDF at time t , for a bin of width $(\delta x, \delta y, \delta z)$ in configuration space and a cell of width $(\delta v_x, \delta v_y, \delta v_z)$ in velocity space, is obtained by dividing N_i to the volume of each 6-D cell in the phase space. The dimensions of the spatial bins and velocity cells are chosen such that the 6-D phase space is well sampled to provide a good representation of the VDF.

The physical quantities are normalized as follows: the number density is normalized to its initial value n_0 , the particle velocities are normalized to their initial thermal speed $V_{T0}=(2k_B T_0/m)^{1/2}$. The VDF is normalized to the maximum value of the initial displaced Maxwellian distribution, $f_0=n_0/(\pi^{3/2}V_{T0}^3)$. The time and spatial coordinates are normalized to the initial ion Larmor period T_{Li} and the grid spacing $\Delta x=0.5r_{Le}$.

3 Numerical results

The dynamics of the jet during its interaction with the TD was discussed by Voitcu and Echim (2016, 2017). When the TD is very steep, the jet is repelled and undergoes two dynamical phases: (A) the jet's frontside interacts directly with the non-uniform magnetic field of the TD leading to vanishing of the self-polarization electric field and (B) the jet is repelled and split into two counterstreaming plasma flows tangential to the TD surface. Here we focus on the kinetic properties of electrons of the deflected plasma jet and consider two instances of its dynamics, typical for phase A (illustrated by Fig. 2) and phase B (illustrated by Fig. 3), respectively.

We define a uniform grid in configuration space whose cells have the perpendicular size equal to $\delta x=6$ ($\approx 3r_{Le}$) and $\delta y=13$ ($\approx 6r_{Le}$), respectively. This spatial resolution is chosen in order to achieve a sampling of the numerical VDFs comparable to the experimental data obtained with state-of-the-art electron spectrometer in the vicinity of the magnetopause, like, e.g., those embarked on MMS whose time resolution is 30 ms. The distance covered by MMS during 30 ms within a plasma flow of 100 km/s is of the order of few electron Larmor radii. In order to increase the number of particles collected in each bin of the spatial grid, the grid cells are expanded over the entire column of the simulation domain along the z -axis ($\delta z=800$). Nevertheless, we performed tests for smaller δz (not shown) and found that the relevant features of the VDF do not depend on the cell size along Oz . A uniform 3D grid is also defined in the velocity space whose cells dimensions are $\delta v_z=0.6V_{Te0}$ and $\delta v_x=\delta v_y=0.08V_{Te0}$. In the following we discuss sections of VDFs in the plane perpendicular to the magnetic field obtained from velocity cells whose centres are located in $v_z=0$.

The numerical simulations results obtained for the interaction of the high-speed plasma jet with the TD are shown in Fig. 2 (for $t=1T_{Li}$, corresponding to phase A) and Figure 3 (for $t=1.9T_{Li}$, corresponding to phase B). In panel (a) we illustrate the number density of electrons for the central cross-section localized in $z=403$; panel (b) shows the 3-D shape of the plasma jet computed as the isosurface corresponding to $n_e=0.04n_0$ in Fig. 2 and $n_e=0.02n_0$ in Fig. 3. The VDF is calculated for 88 spatial bins that cover the entire jet at $t=1T_{Li}$ and 84 ones at $t=1.9T_{Li}$. We selected the most relevant nine bins labelled A1–A9 in Fig. 2(a) and B1–B9 in Fig. 3(a). The corresponding electron VDFs are shown in panels (c)–(k) of both Fig. 2 and 3. The VDF maps for the entire spatial grids are provided in Appendix A.

The electron VDF in the core of the plasma jet is a displaced Maxwellian similar to the initial one, as can be seen in Fig. 2(c) and 3(c). However, the VDFs at the boundaries of the deflected plasma jet are non-gyrotropic, as shown by bins A5–A9 and B5–B9 where the phase space density is virtually empty in the central region, for small perpendicular velocities. The VDF takes however larger values in the sector of a ring around the depleted core. These features give the VDF a crescent-like aspect. On the other hand, the VDFs in the frontal bins A2, A3 and B2, B3 are depleted at larger velocities, while the phase space density for small velocities is large.

These non-gyrotropic features of the VDFs are observed in the plane of perpendicular velocities, inside the TD (bins A5–A7), but also outside it (bins A8, A9 and B5–B9). Their characteristics change with the distance from the jet boundaries. On the one hand, the size of the VDF's central cavity increases towards the lateral edge of the jet (compare, for instance, the VDFs plotted for bins A6 and A7). On the other hand, the VDFs take non-vanishing values only in limited sectors surrounding the central cavity; the peak VDF density in the ring varies from one bin to another (compare, for instance, the VDFs for bins A6 and A8 in Fig. 2).

The physical mechanisms contributing to the formation of crescent-shaped electron VDFs are illustrated by the diagrams in Fig. 4. The electrons in the frontside of the jet interact with the magnetic field gradient inside the discontinuity and drift in the $-Oy$ direction with a velocity proportional to their gyration energy (Northrop, 1963). Thus, the electrons with higher kinetic energies are scattered to larger distances than the less energetic ones. The forward motion of the jet towards the discontinuity continuously replenish the electron population at the front edge. The gradient-B drift acts as a filter of the perpendicular velocities whose effect is the formation of an energy-dispersed structure in the frontal region of the plasma jet; the electrons with higher kinetic energies accumulate towards the jet's lateral edge, in the direction $-\vec{B} \times \nabla B$ (compare, for

instance, Fig. 4(b) and 4(e)). Due to this filtering effect, the regions far from the centre of the jet, along $-Oy$, cannot be reached by the low-energy electrons whose gradient-B drift velocity is small. Thus, far from jet's centre, the phase space of small velocities is empty and a central cavity is formed, as shown in Fig. 4(d) and 4(e). The VDF is therefore ring-shaped. The corresponding low-energy cut-off of the phase space ring increases with the distance from the jet's centre along $-Oy$, since the spatial regions increasingly farther from the central region of the jet are accessible to electrons with increasingly larger gyration velocities (compare the VDF's central cavities in Fig. 4(d) and 4(e)). Fig. 2 and the diagrams in Fig. 4(a)–4(e) show the formation of ring-shaped VDFs during phase A of the interaction between the jet and the TD.

Nevertheless, the kinetic features imprinted by the gradient-B drift during phase A are persistent and the non-Maxwellian electron VDFs are observed later in the simulation when the jet is pushed back, outside the TD. Indeed, during the backward convection of jet's frontal regions, the energy-dispersed structure is displaced in the $-Ox$ direction. This explains the shape of VDFs in spatial bins localized in regions of uniform magnetic field, like A8 and A9 in Fig. 2 and B5–B9 in Fig. 3. Thus, the ring-shaped VDFs persist when the plasma drifts far from the actual interaction with the non-uniform field. The tangential deflection of the jet carries the energy-dispersed structure away from the impact zone and enhances the asymmetry of the lateral edges. The low-energy electrons and the ring-shaped VDFs are displaced in opposite directions, to larger and larger distances from the core. The diagram in Fig. 4(f) illustrates this effect. Note that this mechanism explains partially the simulation results, however it does not account for the non-gyrotropy. To clarify this issue, we must consider a supplemental effect.

Let us discuss the VDFs obtained in spatial bins A5–A9 and B5–B9 from Fig. 2 and 3, respectively. The diagram in Fig. 4(g) illustrates such a rectangular bin, as well as the guiding centres of four electron orbits localized outside bin's boundaries and whose Larmor radii are comparable to the size of the bin. Each orbit intersects the area of the bin for a limited time interval and is counted when computing the VDF value in the velocity space region determined by the electron gyration velocity along the segment of the orbit inside the bin. That region in the velocity space changes for each of the four illustrative orbits considered in Fig. 4(g) according to the gyration phase. For instance, within the segment localized in the bin, the gyration velocity of the electron following the red orbit takes values that are restricted to the upper sector of the perpendicular velocity space where $v_y > 0$, while the gyration velocity of the electron along the blue orbit is restricted to the $v_x > 0$ sector, as shown in Fig. 4(h). The absence of certain guiding centres (and of their intersecting orbits) around the spatial bin decreases the VDF's phase density for the velocities corresponding to the missing guiding centres. Thus, the spatial inhomogeneity at the borders of the jet manifests as a phase space non-gyrotropy of the distribution function. This effect leads to the formation of non-gyrotropic VDFs in the spatial bin itself and is noticeable in regions of configuration space characterised by sharp variations of the density of particles with large kinetic energy.

The mechanism discussed above can be verified for a configuration similar to our numerical simulations. For this purpose, a schematic diagram is sketched in Fig. 4(i) where we consider two spatial bins close to jet's boundaries. We discuss the VDFs collected in these two bins. The distribution of the guiding centres around the bins is non-uniform. Indeed, the top bin in Fig. 4(i) is predominantly intersected by large Larmor radius orbits whose guiding centres are found at the left side (like the red orbit in Fig. 4(g)), while the bottom bin is mostly crossed by orbits from above (similarly to the blue orbit in Fig. 4(g)). Therefore, the phase space density of the VDF in the two spatial bins is non-vanishing only in a limited sector defined by $v_y > 0$ (the top bin) and $v_x > 0$ (the bottom bin), respectively. Thus, only the upper (right) part of the ring-shaped VDF in Fig. 4(d) (4(e)) is accessible to the top (bottom) bin and the VDFs in these regions are crescent-shaped, as illustrated in Fig. 4(j) and 4(k). This explains the results of our simulations. Indeed, if one checks the electron VDFs from the numerical simulations in Fig. 2, one notes the crescent-like features in bins A6 and A8 in Fig. 2(a) similar to the top and bottom bins in Fig. 4(i) (compare the VDFs in Fig. 2(h) and 2(j) to the ones in Fig. 4(j) and 4(k)). On the other hand, bin B5 in Fig. 3(a) is crossed by orbits having the guiding centres localized at its left side and also above it. The crescent-shaped VDF in this case

is rotated towards the ($v_x > 0$, $v_y > 0$) sector of the perpendicular velocity space, as can be seen in Fig. 3(g). Similar arguments explain the orientation of all crescent-shaped VDFs in Fig. 2 and 3.

The discussion above shows that the formation of crescent-like electron VDFs at the edges of a low-beta plasma jet interacting with a magnetic discontinuity is the result of a combined effect due to: (i) the formation of an energy dispersion region at the front edge of the plasma jet sustained by the energy-dependent gradient-B drift – this effect leads to the formation of a ring shaped VDF and (ii) the remote sensing of large Larmor radius electrons at the lateral edge of the jet – this effect explains why certain regions of the ring-shaped VDFs have very small phase density leading to the crescent-like shape. The simulations also show that the kinetic structure resulting from the interaction with the discontinuity is maintained at later stages, when the jet is deflected and pushed outside the TD. Indeed, the non-gyrotropic features imprinted by the interaction of the low-beta plasma jet with the steep tangential discontinuity are observed during its subsequent motion. In the case of high-beta plasma jets, we expect that the dynamics of the electrons and ions to be affected by the magnetic perturbation produced by the jet itself and, consequently, to alter the velocity filtering and remote sensing effects leading to the formation of crescent-shaped electron VDFs. Supplemental simulations are envisaged in the future to clarify this aspect. It should be mentioned that the ion VDFs (not discussed here) do not show any crescent features in the perpendicular velocity space.

Numerous recent spacecraft observations show the omnipresence of magnetosheath jets and therefore there is an increased interest on their kinetic structure (see, e.g., Plaschke et al., 2017; Karlsson et al., 2018). Below we discuss a possible method to check the results of our simulations against spacecraft observations. For this purpose, we “launched” a virtual satellite into the simulation domain. The VDF is “measured” by counting the particles localized within a fixed spatial bin centred on the virtual satellite. We use the same spatial resolution as in Fig. 2 and 3, thus the resolution of the virtual satellite measurements is comparable to the very high-resolution electron measurements provided by MMS. In Fig. 5 we show five examples of electron VDFs measured by the virtual satellite. For consistency, we consider the same satellite S1 as in Voitcu and Echim (2017). A virtual time-series of VDFs is collected in $x=75$, $y=153$ and $z=403$, at $t_1=1.03T_{Li}$, $t_2=1.54T_{Li}$, $t_3=2.05T_{Li}$, $t_4=2.57T_{Li}$ and $t_5=3.08T_{Li}$. We illustrate the perpendicular cross-sections corresponding to $v_z=0$ and use the same resolution in velocity space as in Fig. 2 and 3. The temporal separation of the five VDFs is equal to $19T_{Le}$ (where T_{Le} is the Larmor period of electrons in the upstream region); it corresponds to a 30 ms time resolution which is compatible with the MMS measurements of electron VDFs in a magnetic field of 23 nT.

The virtual satellite probes the jet’s lateral edge deflected towards the $-\vec{B} \times \nabla B$ direction in the vicinity of the TD (which could correspond to an idealized magnetopause). It moves within the energy-dispersed structure and detects the crescent-shaped electron VDFs illustrated in Fig. 5(a)–5(e). The morphology and orientation of the electron VDFs change in time. At $t_1=1.03T_{Li}$ (see Fig. 5(a)), the crescent is thinner and the phase density is enhanced in the $v_x > 0$ sector of the perpendicular velocity space (as in Fig. 2(k)). Up to $t_5=3.08T_{Li}$ (see Fig. 5(e)), the crescent becomes more and more thicker and it rotates counter clockwise towards the $v_y > 0$ sector, as the virtual satellite samples different areas close to the jet’s boundaries. In a frame of reference attached to the deflected plasma jet, the satellite is moving away from the jet’s edge at the lowest y -value, drifting along the positive direction of the y -axis and in the same time closer to the TD’s surface. Indeed, at time t_1 , the area sampled by the virtual satellite is similar to that of bin A9 in Fig. 2(a), while at time t_5 the satellite is in a similar position to the centre of the bin A5 in Fig. 2(a). Thus, the position of the satellite changes with respect to the plasma jet’s core. At time t_1 , the satellite is at its farthest distance from the jet’s core along the $-\vec{B} \times \nabla B$ direction and the corresponding VDF has the largest central cavity in the space of perpendicular velocities. Later on, the satellite moves closer to the jet’s core and the size of the VDF’s central cavity decreases. The position of the satellite changes also with respect to the local orientation of the jet’s boundaries. While at time t_1 most of the electrons are coming from above the satellite’s sampling area (like the blue orbit in Fig. 4(g)), at t_5 most of them are coming from the left side (like the red orbit in Fig. 4(g)). Consequently, the peak of the gyrophase density in the space of perpendicular velocities rotates from the $v_x > 0$ sector in

Fig. 5(a) towards the $v_y > 0$ sector in Fig. 5(e). Since the properties of the measured electron VDFs depend on the relative location of the satellite with respect to the jet's core and boundaries, such kind of velocity distribution functions could be used to estimate some geometrical and morphological features of a deflected plasma jet.

4 Summary and conclusions

3-D PIC simulations of the interaction between a low-beta plasma jet and a thin, steep and impenetrable tangential discontinuity with no magnetic shear emphasize the formation of crescent-shaped electron velocity distribution functions at the jet's boundaries. The simulation setup corresponds to an idealised, yet relevant, magnetic configuration likely to be observed at the frontside magnetopause during northward IMF. The results of our simulations show:

1. The crescent-shaped electron VDFs are observed in a magnetic field configuration that has no X-line. Their occurrence and characteristics depend on the dynamic and geometric properties of the jet, as well as on the profile of the non-uniform magnetic and electric fields at the discontinuity.
2. The energy-dependent gradient-B drift of the electrons in the frontside of the jet leads to the formation of an energy-dispersed structure with ring-shaped velocity distribution functions: the electrons with higher gyration energies accumulate towards the jet's lateral edge along the $-\vec{B} \times \nabla B$ direction where the VDF shows a deficit of low energy electrons in the perpendicular velocity space.
3. Within the most lateral edges of the energy-dispersed structure, the ring of the VDF is incomplete and the VDF's shape changes from ring-shaped to crescent-shaped. The crescent is due to the spatial anisotropy at the sharp edges of the plasma jet. It is produced by the remote sensing of high-energy particles whose guiding centres are localized inside the jet, as illustrated schematically in Fig. 4.
4. The crescent-shaped VDFs are produced simultaneously by (i) the velocity filtering effect of the gradient-B drift and (ii) the remote sensing of large Larmor radius electrons at the boundaries of the plasma jet.
5. Virtual time-series of electron VDFs recorded by a virtual satellite launched into the simulation domain show that the ring-shaped and crescent-shaped electron VDFs are persistent and carried by the jet during its motion after interacting with the magnetic discontinuity. Their properties (like the size and position of the crescent) change with the satellite's location within the jet, thus such VDFs can help estimating the geometrical and morphological features of a deflected jet during or after its interaction with a tangential discontinuity or regions of sharp magnetic field variation.

The new and original result of our study is the identification of crescent-shaped electron VDFs as a boundary effect at the edges of a finite-size three-dimensional plasma jet impacting on a tangential discontinuity with no field reversal. The properties of the crescents vary with the distance from the jet's centre in the $-\vec{B} \times \nabla B$ direction; they also depend on the local orientation of the jet's boundaries. The physical mechanism we propose to explain the crescent-shaped VDFs is based on finite Larmor radius effects. To our knowledge, this is for the first time when such kind of electron velocity distributions are emphasized in the absence of X-lines and magnetic field reversal and the physical process proposed adds to the ones discussed in the past like, for instance, the remote sensing of a thin Harris sheet (Lee et al., 2004; Voitcu and Echim, 2012), the dynamics of non-magnetized Speiser-like electrons (Bessho et al., 2016; Shay et al., 2016; Lapenta et al., 2017) or the dynamics of magnetized electrons (Egedal et al., 2016) in the diffusion region of magnetic reconnection sites.

The crescent-shaped electron VDFs discussed in this paper and the ones reported in connection with magnetic reconnection at the dayside magnetopause show similar features in the perpendicular velocity space, but there are also significant differences between them related to the actual geometry of the physical processes leading to their formation. In our simulations, the electron crescents are obtained in connection to a counterstreaming jetting structure in the perpendicular direction to both the background magnetic field and the normal to the TD's surface (our simplified magnetopause) and

involve velocity filtering and remote sensing effects; the corresponding VDFs are found inside and also in the vicinity of the discontinuity towards the $-\vec{B} \times \nabla B$ direction. On the other hand, in, e.g., Bessho et al. (2016), Burch et al. (2016), Egedal et al. (2016), Shay et al. (2016), Lapenta et al. (2017), the electron crescents are obtained in connection to the anti-parallel jetting along the magnetospheric field direction produced by magnetic reconnection; the corresponding VDFs are found close to the magnetic null region. Egedal et al. (2016) show that the crescent-shaped electron VDFs are formed along the low-density separatrix in a thin boundary layer having the width of approximately one electron Larmor radius. In our simulations, the crescent-shaped electron VDFs are observed over a wide area covering few tens of electron Larmor radii in the perpendicular plane to the magnetic field.

The simulations discussed in this paper provide new insight on the microphysics of plasma-field interaction near magnetic boundaries and contribute to advance the understanding of the dynamics and kinetics of magnetosheath high-speed jets streaming towards the magnetopause during periods of northward IMF. We also demonstrate that the crescent is a persistent feature of the VDFs that can be detected at relatively large distances from the interaction with the discontinuity and therefore might be used as a kinetic signature of such interaction.

Data availability

The simulation data used to produce all the plots and analyses included in this paper can be requested by sending an e-mail to Gabriel Voitu at one of the following addresses: gabi@space-science.ro or gabriel.voitu@gmail.com.

Appendix A

We present here the full map of the electron velocity distribution functions for all the spatial bins defined in the xOy plane, perpendicular to the magnetic field direction. In Fig. A1 we show the electron number density in the plane xOy for $z=403$, at two instances: (a) $t=1T_{Li}$ and (b) $t=1.9T_{Li}$, together with all the bins used to calculate the electron VDFs. There are 88 bins in Fig. A1(a) and 84 bins in Fig. A1(b) that cover the entire plasma jet at the two different time instances. The VDFs for each spatial bin are illustrated in Fig. A2 (at $t=1T_{Li}$) and A3 (at $t=1.9T_{Li}$) where we show cross-sections corresponding to $v_z=0$. The nine selected bins A1–A9 in Fig. 2 of the article correspond to bins 39, 10, 21, 43, 65, 76, 87, 75, 86 in Fig. A1(a). The nine selected bins B1–B9 in Fig. 3 of the article correspond to bins 39, 6, 13, 41, 69, 76, 83, 75, 82 in Fig. A1(b). One note that in the bulk of the jet the VDF is a displaced Maxwellian, consistent with the forward motion of the plasma. The non-gyrotropic effects are localized at the edges of the plasma jet.

Competing interests

The authors declare that they have no conflict of interest.

Acknowledgments

The authors acknowledge support from the Romanian Space Agency (ROSA) through the Space Technology and Advanced Research (STAR) Programme under contracts 182/2017 (OANA) and 122/2017 (ODYN) and also from the Romanian Executive Agency for Higher Education, Research, Development and Innovation Funding (UEFISCDI) through project VESS/2018. Marius Echim acknowledges support from the Belgian Solar-Terrestrial Centre of Excellence (STCE) in Brussels, Belgium.

References

- Archer, M. O. and Horbury, T. S.: Magnetosheath dynamic pressure enhancements: occurrence and typical properties, *Annales Geophysicae*, 31, 319-331, 2013.
- Bessho, N., Chen, L.-J., and Hesse, M.: Electron distribution functions in the diffusion region of asymmetric magnetic reconnection, *Geophys. Res. Lett.*, 43, 1828-1836, doi:10.1002/2016GL067886, 2016.
- Buneman, O.: TRISTAN – The 3D electromagnetic particle code, in: *Computer Space Plasma Physics: Simulation Techniques and Software*, edited by Matsumoto, H., and Omura, Y., Terra Scientific Publishing Company, Tokyo, 1993.
- Burch, J. L., et al.: Electron-scale measurements of magnetic reconnection in space, *Science*, 352, aaf2939, doi:10.1126/science.aaf2939, 2016.
- 10 Cai, D. S. and Buneman, O.: Formation and stability of polarization sheaths of a cross-field beam, *Phys. Fluids B*, 4, 1033-1046, 1992.
- Chen, F. F.: *Introduction to plasma physics and controlled fusion*, Second Edition, Plenum Press, New York, 1974.
- Dai, W. and Woodward, P. R.: Two-dimensional simulations for the impulsive penetration of a solar wind filament into the magnetosphere, *J. Geophys. Res.*, 99, 8577-8584, 1994.
- 15 Dai, W. and Woodward, P. R.: Interactions between a solar wind filament and an open magnetosphere, *J. Geophys. Res.*, 100, 14843-14852, 1995.
- Dai, W. and Woodward, P. R.: Oblique penetration of solar-wind filaments into the magnetosphere, *J. Plasma Phys.*, 60, 711-729, 1998.
- Dmitriev, A. V. and Suvorova, A. V.: Traveling magnetopause distortion related to a large-scale magnetosheath plasma jet: THEMIS and ground-based observations, *J. Geophys. Res.*, 117, A08217, 2012.
- 20 Dmitriev, A. V. and Suvorova, A. V.: Large-scale jets in the magnetosheath and plasma penetration across the magnetopause: THEMIS observations, *J. Geophys. Res.: Space Physics*, 120, 4423-4437, doi:10.1002/2014JA020953, 2015.
- Echim, M. M. and Lemaire, J. F.: Laboratory and numerical simulations of the impulsive penetration mechanism, *Space Science Reviews*, 92, 565-601, 2000.
- 25 Echim, M. M. and Lemaire, J.: Two-dimensional Vlasov solution for a collisionless plasma jet across transverse magnetic field lines with a sheared bulk velocity, *Phys. Rev. E*, 72, 036405, doi:10.1103/PhysRevE.72.036405, 2005.
- Egedal, J., Le, A., Daughton, W., Wetherton, B., Cassak, P. A., Chen, L.-J., Lavraud, B., Torbert, R. B., Dorelli, J., Gershman, D. J., and Avanov, L. A.: Spacecraft Observations and Analytic Theory of Crescent-Shaped Electron Distributions in Asymmetric Magnetic Reconnection, *Physical Review Letters*, 117, 185101, doi:10.1103/PhysRevLett.117.185101, 2016.
- 30 Galvez, M.: Computer simulation of a plasma streaming across a magnetic field, *Physics of Fluids*, 30, 2729-2739, 1987.
- Galvez, M., Gary, S. P., Barnes, C., and Winske, D.: Computer simulations of plasma expansion across a magnetic field, *Phys. Fluids*, 31, 1554-1567, 1988.
- Galvez, M. and Borovsky, J. E.: The expansion of polarization charge layers into a magnetized vacuum: theory and computer simulations, *Phys. Fluids B*, 3, 1892-1907, 1991.
- 35 Gunell, H., Walker, J. J., Koepke, M. E., Hurtig, T., Brenning, N., and Nilsson, H.: Numerical experiments on plasmoids entering a transverse magnetic field, *Physics of Plasmas*, 16, 112901, 2009.

- Gunell, H., Nilsson, H., Stenberg, G., Hamrin, M., Karlsson, T., Maggiolo, R., André, M., Lundin, R., and Dandouras, I.: Plasma penetration of the dayside magnetopause, *Physics of Plasmas*, 19, 072906, 2012.
- Gunell, H., Stenberg Wieser, G., Mella, M., Maggiolo, R., Nilsson, H., Darrouzet, F., Hamrin, M., Karlsson, T., Brenning, N., De Keyser, J., André, M., and Dandouras, I.: Waves in high-speed plasmoids in the magnetosheath and at the magnetopause, *Ann. Geophys.*, 32, 991-1009, 2014.
- Haaland, S. E., et al.: Four-spacecraft determination of magnetopause orientation, motion and thickness: Comparison with results from single-spacecraft methods, *Ann. Geophys.*, 22, 1347–1365, doi:10.5194/angeo-22-1347-2004, 2004.
- Hietala, H., Partamies, N., Laitinen, T. V., Clausen, L. B. N., Facskó, G., Vaivads, A., Koskinen, H. E. J., Dandouras, I., Rème, H., and Lucek, E. A.: Supermagnetosonic subsolar magnetosheath jets and their effects: from the solar wind to the ionospheric convection, *Ann. Geophys.*, 30, 33-48, 2012.
- Hietala, H., Phan, T. D., Angelopoulos, V., Oieroset, M., Archer, M. O., Karlsson, T., and Plaschke, F.: In situ observations of a magnetosheath high-speed jet triggering magnetopause reconnection, *Geophys. Res. Lett.*, 45, 1732-1740, doi:10.1002/2017GL076525, 2018.
- Huba, J. D.: Impulsive plasmoid penetration of a tangential discontinuity: Two-dimensional ideal and Hall magnetohydrodynamics, *J. Geophys. Res.*, 101, 24855-24868, 1996.
- Hurtig, T., Brenning, N., and Raadu, M. A.: Three-dimensional electrostatic particle-in-cell simulation with open boundaries applied to a plasma beam entering a curved magnetic field, *Physics of Plasmas*, 10, 4291-4305, 2003.
- Karlsson, T., Brenning, N., Nilsson, H., Trotignon, J.-G., Vallières, X., and Facsko, G.: Localized density enhancements in the magnetosheath: Three-dimensional morphology and possible importance for impulsive penetration, *J. Geophys. Res.*, 117, A03227, doi:10.1029/2011JA017059, 2012.
- Karlsson, T., Plaschke, F., Hietala, H., Archer, M., Blanco-Cano, X., Kajdič, P., Lindqvist, P.-A., Marklund, G., and Gershman, D. J.: Investigating the anatomy of magnetosheath jets – MMS observations, *Ann. Geophys.*, 36, 655-677, doi:10.5194/angeo-36-655-2018, 2018.
- Lapenta, G., Berchem, J., Zhou, M., Walker, R. J., El-Alaoui, M., Goldstein, M. L., Paterson, W. R., Giles, B. L., Pollock, C. J., Russell, C. T., Strangeway, R. J., Ergun, R. E., Khotyaintsev, Y. V., Torbert, R. B., and Burch, J. L.: On the origin of the crescent-shaped distributions observed by MMS at the magnetopause, *J. Geophys. Res. Space Physics*, 122, 2024-2039, doi: 10.1002/ 2016JA023290, 2017.
- Lee, E., Wilber, M., Parks, G. K., Min, K. W., and Lee, D.-Y.: Modeling of remote sensing of thin current sheet, *Geophys. Res. Lett.*, 31, L21806, doi:10.1029/2004GL020331, 2004.
- Lemaire, J.: Impulsive penetration of filamentary plasma elements into the magnetospheres of the Earth and Jupiter, *Planet. Space Sci.*, 25, 887-890, 1977.
- Lemaire, J.: Plasmoid motion across a tangential discontinuity (with applications to the magnetopause), *J. Plasma Phys.*, 33, 425-436, 1985.
- Lemaire, J. and Roth, M.: Non-steady-state solar wind-magnetosphere interaction, *Space Science Reviews*, 57, 59-108, doi:10.1007/BF00195951, 1991.
- Livesey, W. A. and Pritchett, P. L.: Two-dimensional simulations of a charge-neutral plasma beam injected into a transverse magnetic-field, *Phys. Fluids B - Plasma Physics*, 1, 914-922, 1989.

- Lu, G., Onsager, T. G., Le, G., and Russell, C. T.: Ion injections and magnetic field oscillations near the high-latitude magnetopause associated with solar wind dynamic pressure enhancement, *Journal of Geophysical Research*, 109, A06208, doi:10.1029/2003JA010297, 2004.
- Lundin, R. and Aparicio, B.: Observations of penetrated solar wind plasma elements in the plasma mantle, *Planetary and Space Science*, 30, 81-91, 1982.
- Lyatsky, W., Pollock, C., Goldstein, M. L., Lyatskaya, S., and Avakov, L.: Penetration of magnetosheath plasma into dayside magnetosphere: 1. Density, velocity, and rotation, *J. Geophys. Res. Space Physics*, 121, 7699-7712, doi:10.1002/2015JA022119, 2016.
- Ma, Z. V., Hawkins, J. G., and Lee, L. C.: A simulation study of impulsive penetration of solar wind irregularities into the magnetosphere at the dayside magnetopause, *J. Geophys. Res.*, 96, 15751-15765, 1991.
- Marcucci, M. F., Bavassano Cattaneo, M. B., Pallochia, G., Amata, E., Bruno, R., Di Lellis, A. M., Formisano, V., Rème, H., Bosqued, J. M., Dandouras, I., Sauvaud, J.-A., Kistler, L. M., Moebius, E., Klecker, B., Carlson, C. W., Parks, G. K., McCarthy, M., Korth, A., Lundin, R., and Balogh, A.: Energetic magnetospheric oxygen in the magnetosheath and its response to IMF orientation: Cluster observations, *J. Geophys. Res.*, 109, A07203, doi:10.1029/2003JA010312, 2004.
- Nakamura, M., Paschmann, G., Baumjohann, W., and Sckopke, N.: Ion distributions and flows near the neutral sheet, *J. Geophys. Res.* 96, 5631-5649, doi:10.1029/90JA02495, 1991.
- Nakamura, M., Paschmann, G., Baumjohann, W., and Sckopke, N.: Ion distributions and flows in and near the plasma sheet boundary layer, *J. Geophys. Res.* 97, 1449-1460, doi:10.1029/91JA02361, 1992.
- Neubert, T., Miller, R. H., Buneman, O., and Nishikawa, K. I.: The dynamics of low-beta plasma clouds as simulated by a 3-dimensional, electromagnetic particle code, *Journal of Geophysical Research - Space Physics*, 97, 12057-12072, 1992.
- Northrop, T. G.: Adiabatic charged-particle motion, *Rev. Geophys.*, 1(3), 283-304, doi:10.1029/RG001i003p00283, 1963.
- Palmroth, M., Hietala, H., Plaschke, F., Archer, M., Karlsson, T., Blanco-Cano, X., Sibeck, D., Kajdič, P., Ganse, U., Pfau-Kempf, Y., Battarbee, M., and Turc, L.: Magnetosheath jet properties and evolution as determined by a global hybrid-Vlasov simulation, *Ann. Geophys. Discuss.*, <https://doi.org/10.5194/angeo-2018-20>, in review, 2018.
- Plaschke, F., Glassmeier, K.-H., Auster, H. U., Constantinescu, O. D., Magnes, W., Angelopoulos, V., Sibeck, D. G., and McFadden, J. P.: Standing Alfvén waves at the magnetopause, *Geophys. Res. Lett.*, 36, L02104, doi:10.1029/2008GL036411, 2009.
- Plaschke, F., Hietala, H., and Angelopoulos, V.: Anti-sunward high-speed jets in the subsolar magnetosheath, *Ann. Geophys.*, 31, 1877-1889, 2013.
- Plaschke, F., Hietala, H., Angelopoulos, V., and Nakamura, R.: Geoeffective jets impacting the magnetopause are very common, *J. Geophys. Res. Space Physics*, 121, doi:10.1002/2016JA022534, 2016.
- Plaschke, F., Karlsson, T., Hietala, H., Archer, M., Vörös, Z., Nakamura, R., Magnes, W., Baumjohann, W., Torbert, R. B., Russell, C. T., Giles, B. L.: Magnetosheath high-speed jets: Internal structure and interaction with ambient plasma, *J. Geophys. Res. Space Physics*, 122, 10157-10175, doi:10.1002/2017JA024471, 2017.
- Roth, M., DeKeyser, J., and Kuznetsova, M. M.: Vlasov theory of the equilibrium structure of tangential discontinuities in space plasmas, *Space Sci. Rev.*, 76, 251-317, doi:10.1007/BF00197842, 1996.

- Savin, S., Amata, E., Zelenyi, L., Lutsenko, V., Safrankova, J., Nemecek, Z., Borodkova, N., Buechner, J., Daly, P. W., Kronberg, E. A., Blecki, J., Budaev, V., Kozak, L., Skalsky, A., and Lezhen, L.: Super fast plasma streams as drivers of transient and anomalous magnetospheric dynamics, *Ann. Geophys.*, 30, 1-7, 2012.
- Savoini, P., Scholer, M., and Fujimoto, M.: Two-dimensional hybrid simulations of impulsive plasma penetration through a tangential discontinuity, *J. Geophys. Res.*, 99, 19377-19391, 1994.
- Schmidt, G.: Plasma motions across magnetic fields, *The Physics of Fluids*, 3, 961-965, 1960.
- Shay, M. A., Phan, T. D., Haggerty, C. C., Fujimoto, M., Drake, J. F., Malakit, K., Cassak, P. A., and Swisdak, M.: Kinetic signatures of the region surrounding the X line in asymmetric (magnetopause) reconnection, *Geophys. Res. Lett.*, 43, 4145-4154, doi:10.1002/2016GL069034, 2016.
- 10 Shi, Q. Q., Zhong, Q.-G., Fu, S. Y., Dunlop, M. W., Pu, Z. Y., Parks, G. K., Wei, Y., Li, W. H., Zhang, H., Nowada, M., Wang, Y. B., Sun, W. J., Xiao, T., Reme, H., Carr, C., Fazakerley, A., and Lucek, E.: Solar wind entry into the high-latitude terrestrial magnetosphere during geomagnetically quiet times, *Nature Communications*, 4, 1466, 2013.
- Voitcu, G. and Echim, M.: Ring-shaped velocity distribution functions in energy-dispersed structures formed at the boundaries of a proton stream injected into a transverse magnetic field: Test-kinetic results, *Phys. Plasmas*, 19, 022903, doi:10.1063/1.3686134, 2012.
- 15 Voitcu, G., Echim, M., and Marchand, R.: Comparative study of forward and backward test-kinetic simulation approaches, *Comput. Phys. Commun.*, 183, 2561-2569, doi:10.1016/j.cpc.2012.07.005, 2012.
- Voitcu, G.: Kinetic simulations of plasma dynamics across magnetic fields and applications to the physics of planetary magnetospheres, Ph.D. thesis, Doctoral School of Physics, University of Bucharest, Romania, 2014.
- 20 Voitcu, G. and Echim, M.: Transport and entry of plasma clouds/jets across transverse magnetic discontinuities: Three-dimensional electromagnetic particle-in-cell simulations, *J. Geophys. Res. Space Physics*, 121, 4343-4361, doi:10.1002/2015JA021973, 2016.
- Voitcu, G. and Echim, M.: Tangential deflection and formation of counterstreaming flows at the impact of a plasma jet on a tangential discontinuity, *Geophys. Res. Lett.*, 44, 5920-5927, doi:10.1002/2017GL073763, 2017.
- 25 Wilber, M., Lee, E., Parks, G. K., Meziane, K., Carlson, C. W., McFadden, J. P., Rème, H., Dandouras, I., Sauvaud, J.-A., Bosqued, J.-M., Kistler, L., Möbius, E., McCarthy, M., Korth, A., Klecker, B., Bavassano-Cattaneo, M.-B., Lundin, R., and Lucek, E.: Cluster observations of velocity space-restricted ion distributions near the plasma sheet, *Geophys. Res. Lett.*, 31, L24802, doi:10.1029/2004GL020265, 2004.
- Willis, D. M.: The magnetopause: Microstructure and interaction with magnetospheric plasma, *J. Atmos. Terr. Phys.*, 40, 301-322, doi:10.1016/0021-9169(78)90047-8, 1978.
- 30 Woch, J. and Lundin, R.: Temporal magnetosheath plasma injection observed with Viking: a case study, *Annales Geophysicae*, 9, 133-142, 1991.
- Woch, J. and Lundin, R.: Signatures of transient boundary layer processes observed with Viking, *Journal of Geophysical Research*, 97(A2), 1431-1447, doi:10.1029/91JA02490, 1992.
- 35 Yamauchi, M., Woch, J., Lundin, R., Shapshak, M., and Elphinstone, R.: A new type of ion injection event observed by Viking, *Geophysical Research Letters*, 20, 795-798, doi:10.1029/93GL00855, 1993.

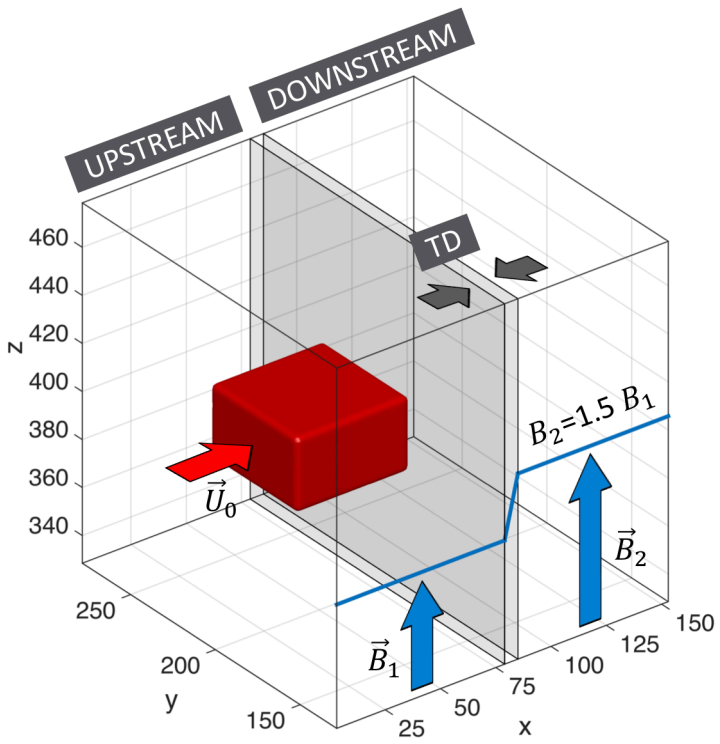


Figure 1: Schematic diagram of the simulation setup. The high-speed plasma jet (shown by the red 3-D box) moves from the upstream region towards a parallel tangential discontinuity. The spatial profile of the background magnetic field is shown with blue. The tangential discontinuity is located between $x_1=79$ and $x_2=85$.

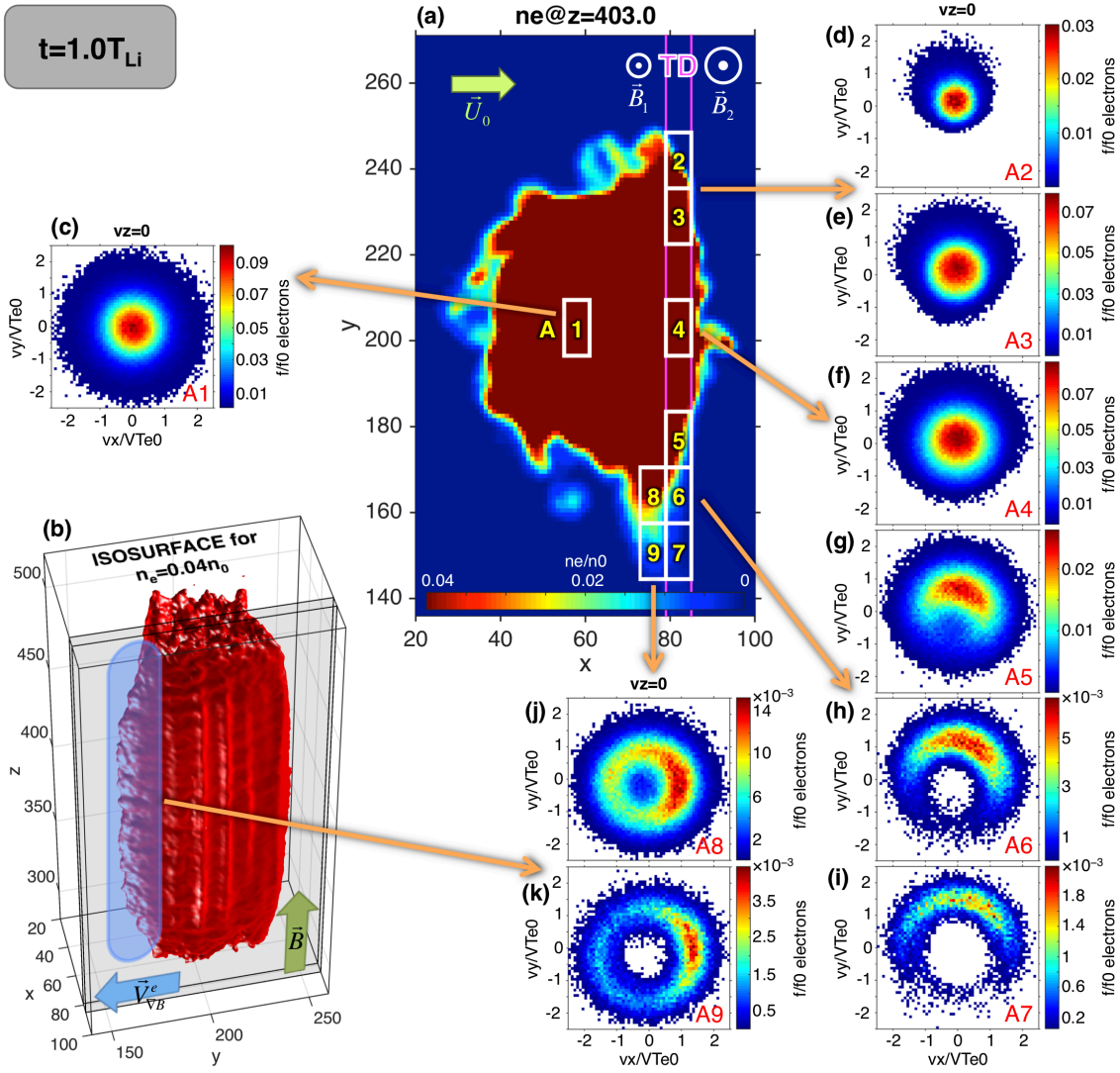


Figure 2: Snapshot of 3-D PIC simulation at $t=1T_{Li}$ (phase A). (a) Electron number density in the xOy plane for $z=403$. (b) 3D density isosurface for $n_e=0.04n_0$. (c)–(k) Electron VDFs in the space of perpendicular velocities for the spatial bins shown with white rectangles in panel (a). The two magenta lines mark the TD's boundaries.

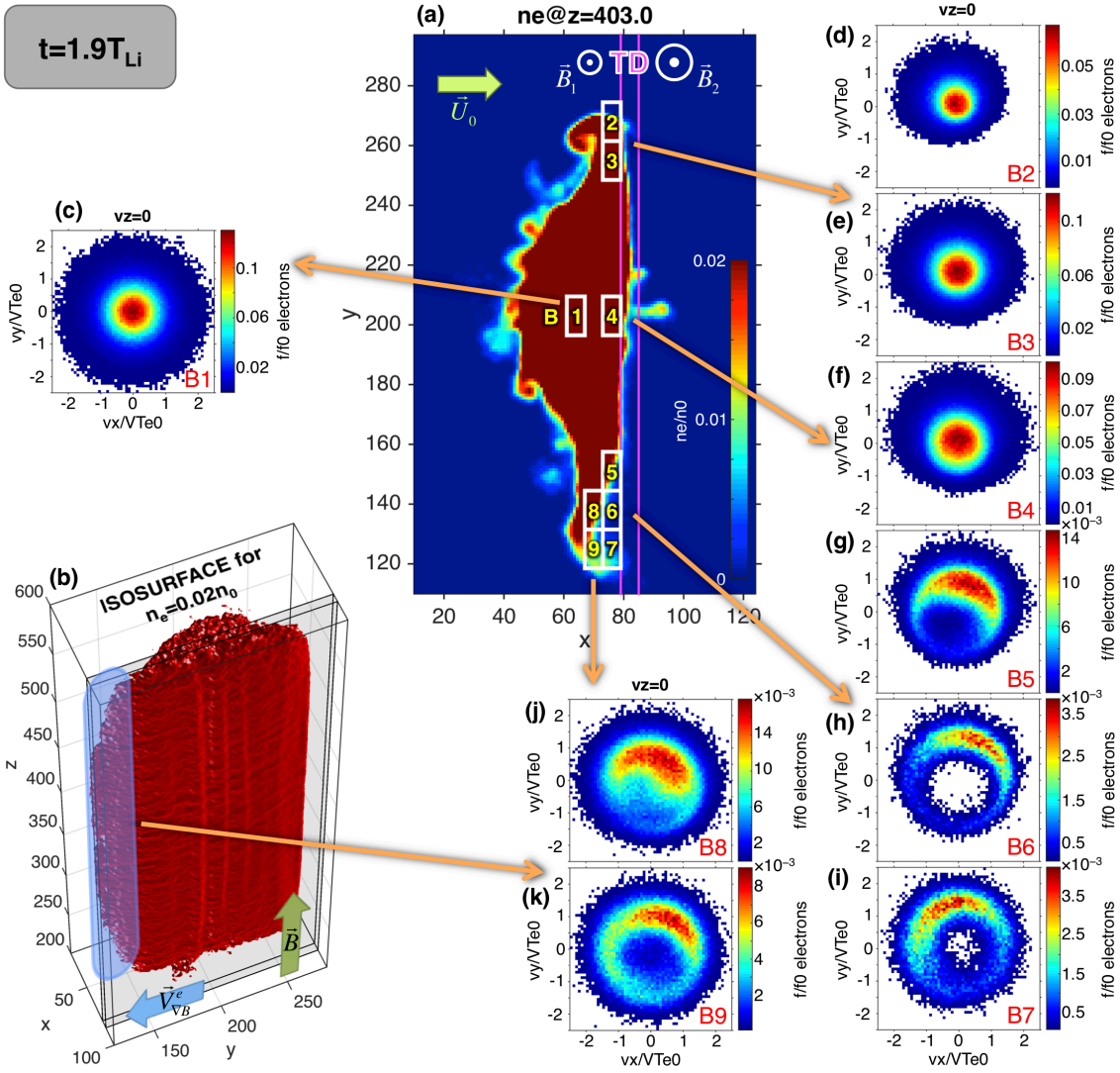


Figure 3: Snapshot of 3-D PIC simulation at $t=1.9T_{Li}$ (phase B). (a) Electron number density in the xOy plane for $z=403$. (b) 3D density isosurface for $n_e=0.02n_0$. (c)–(k) Electron VDFs in the space of perpendicular velocities for the spatial bins shown with white rectangles in panel (a). The two magenta lines mark the TD's boundaries.

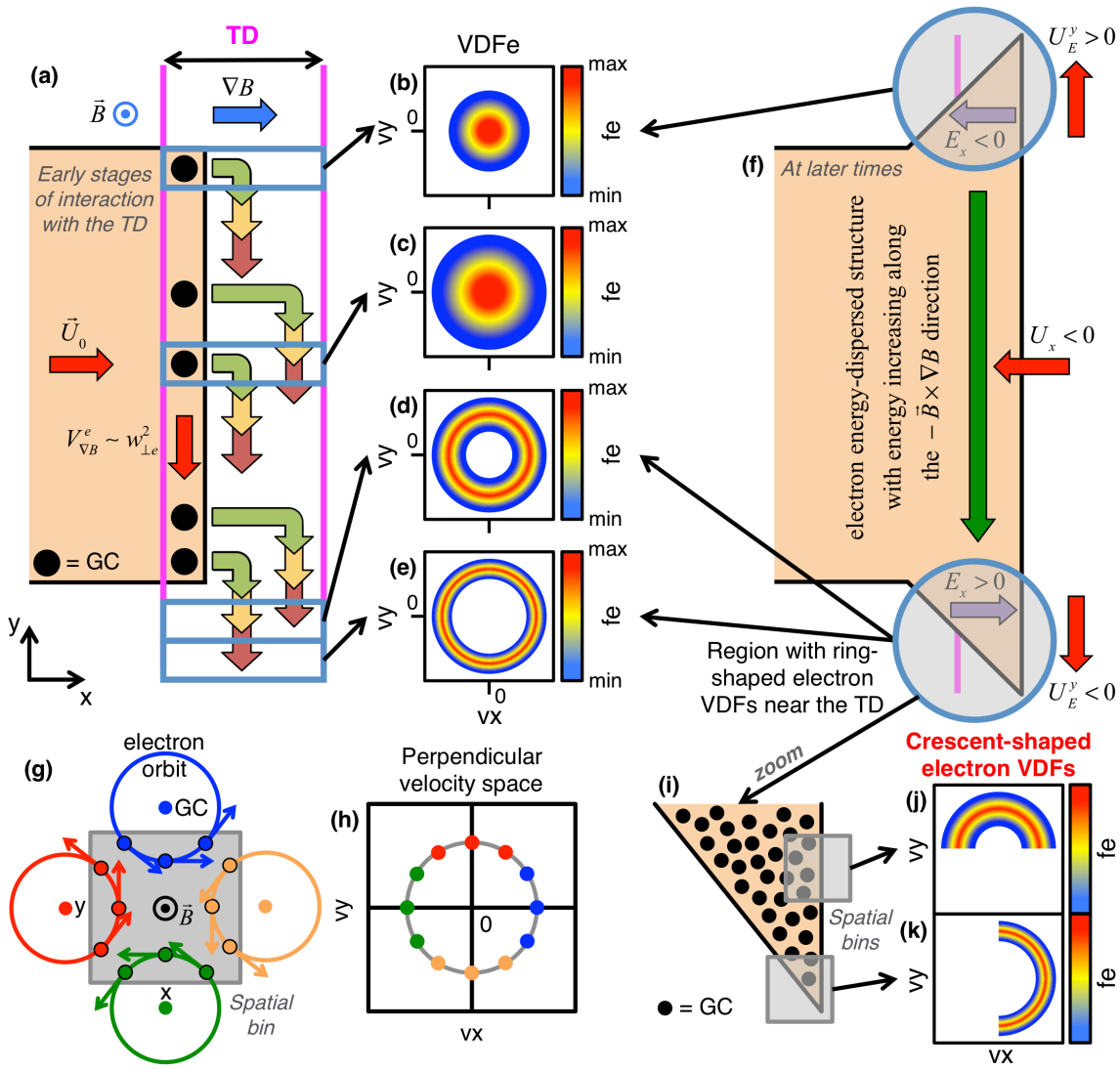


Figure 4: Panel (a) illustrates the phase A of plasma jet's interaction with the magnetic discontinuity. The black dots indicate the guiding centres (GCs) of electrons localized in the front edge. The multiple groups of green-yellow-red arrows show the gradient-B drift displacement of the GCs proportional to the gyration energy (green corresponds to the lowest energy). The four blue boxes indicate the bins where the VDF is computed. The electron VDFs obtained for the upper edge bins (panels (b) and (c)) are gyrotropic and their phase density vanishes for large velocities; the VDFs obtained for the bottom edge bins (panels (d) and (e)) are ring-shaped. Panels (g) and (h) illustrate how the electrons with GCs outside a spatial bin contribute to different sectors of the VDF collected in the respective bin. The colours of the dots in panel (h) identify which particle shown in panel (g) contributes to that sector of the VDF. This effect corresponds to a remote sensing of the large Larmor radius electrons outside the bin. Panels (f), (i)–(k) show how the remote sensing effect contributes to the formation of crescent-shaped VDFs in a configuration similar to the PIC simulations.

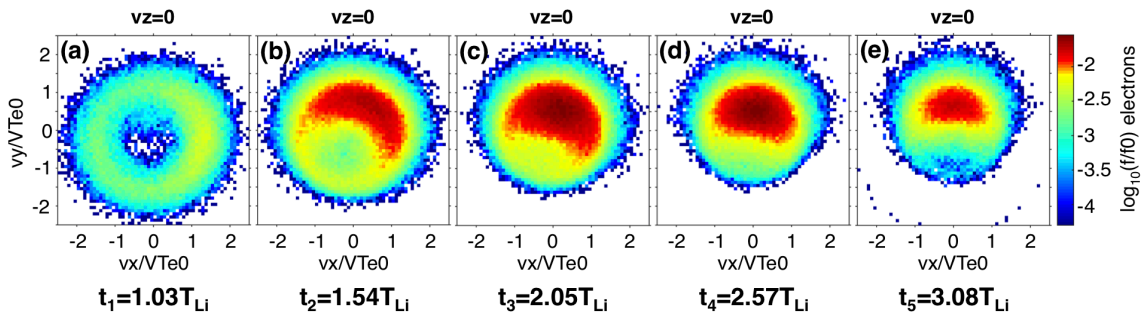


Figure 5: Virtual time-series of five electron VDFs “measured” by a virtual satellite launched into the simulation domain. We illustrate the space of perpendicular velocities for $v_z=0$. The colour scale used is logarithmic.

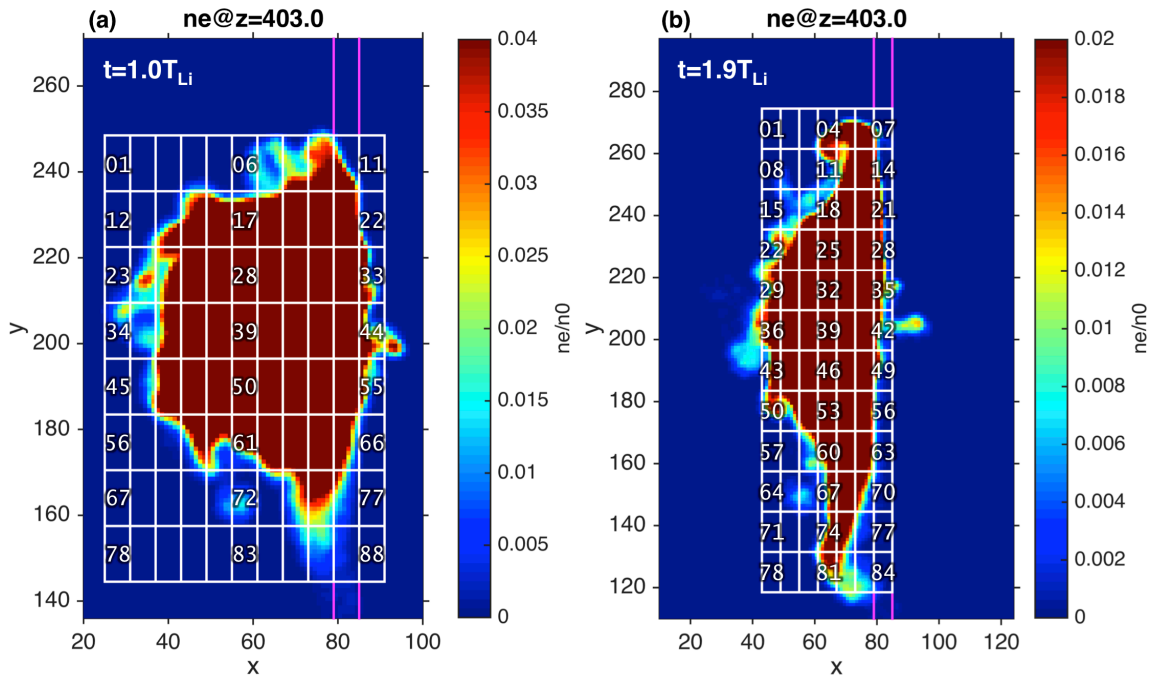


Figure A1: Electron number density for $z=403$ cross-section together with the entire spatial grid used to calculate the electron velocity distribution functions, at (a) $t=1T_{Li}$ and (b) $t=1.9T_{Li}$. There are 88 spatial bins in panel (a) and 84 ones in panel (b).

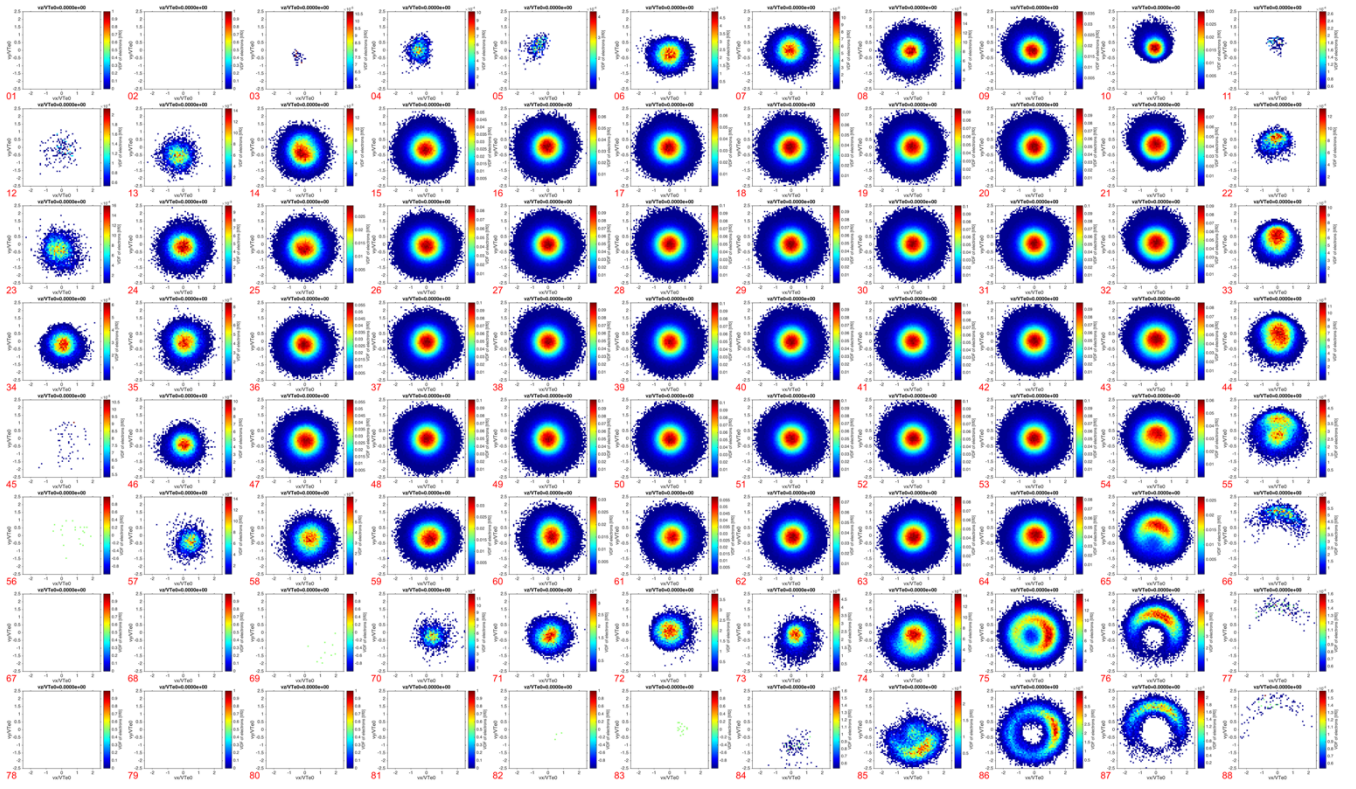


Figure A2: Electron VDFs, at $t=1T_{Li}$, for each of the 88 spatial bins defined in Figure A1(a). We show $v_z=0$ cross-sections. The nine VDFs presented in Figure 2 of the article correspond to bins 39, 10, 21, 43, 65, 76, 87, 75 and 86.

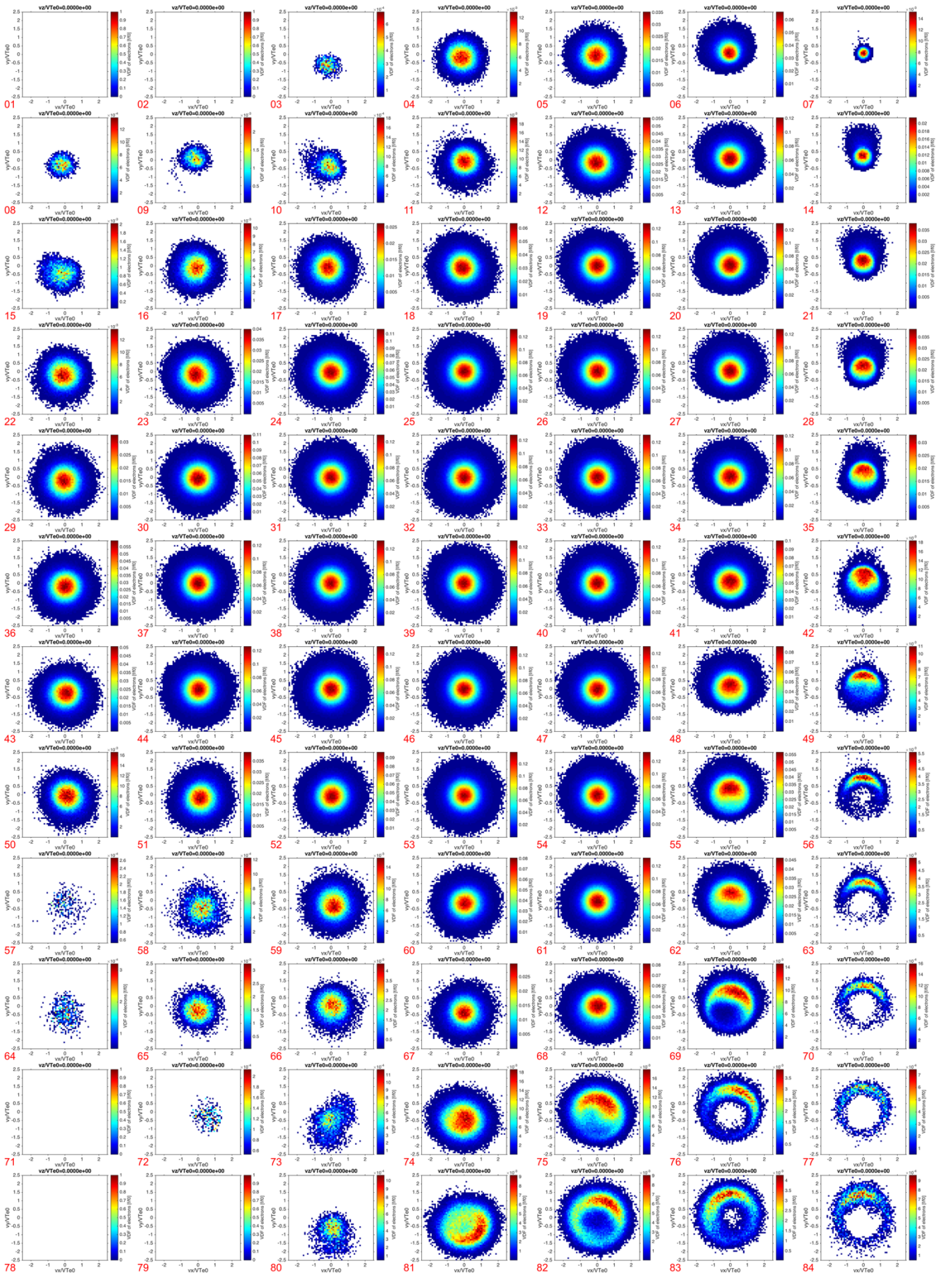


Figure A3: Electron VDFs, at $t=1.9T_{Lb}$, for each of the 84 spatial bins defined in Figure A1(b). We show $v_z=0$ cross-sections. The nine VDFs presented in Figure 3 of the article correspond to bins 39, 6, 13, 41, 69, 76, 83, 75 and 82.