



Atmospheric odd nitrogen response to electron forcing from a 6D magnetospheric hybrid-kinetic simulation

Tuomas Häkkinen¹, Maxime Grandin^{2,1}, Markus Battarbee², Monika E. Szélag¹, Markku Alho², Leo Kotipalo², Niilo Kalakoski¹, Pekka T. Verronen^{1,3}, and Minna Palmroth^{1,2}

¹Space and Earth Observation Centre, Finnish Meteorological Institute, Helsinki, Finland

²Department of Physics, University of Helsinki, Helsinki, Finland

³Sodankylä Geophysical Observatory, University of Oulu, Sodankylä, Finland

Correspondence: Tuomas Häkkinen (tuomas.hakkila@fmi.fi)

Received: 5 June 2024 – Discussion started: 12 June 2024

Revised: 5 February 2025 – Accepted: 12 February 2025 – Published: 17 April 2025

Abstract. Modelling the distribution of odd nitrogen (NO_x) in the polar middle and upper atmosphere has proven to be a complex task. Firstly, its production by energetic electron precipitation is highly variable across a range of temporal scales from seconds to decades. Secondly, there are uncertainties in the measurement-based but simplified electron flux datasets that are currently used in atmosphere and climate models. The altitude distribution of NO_x is also strongly affected by atmospheric dynamics on monthly timescales, particularly in the polar winter periods when the isolated air inside the polar vortex descends from the lower thermosphere to mesosphere and stratosphere. Recent comparisons between measurements and simulations have revealed strong differences in the NO_x distribution, with questions remaining about the representation of both production and transport in models. Here we present for the first time a novel approach, where the electron atmospheric forcing in the auroral energy range (50 eV–50 keV) is derived from a magnetospheric hybrid-kinetic simulation with a detailed description of energy range and resolution, as well as spatial and diurnal distribution. These electron data are used as input in a global whole-atmosphere model to study the impact on polar NO_x and ozone. We show that the magnetospheric electron data provide a realistic representation of the forcing, which leads to considerable impact in the lower thermosphere, mesosphere, and stratosphere. We find that during the polar winter the simulated auroral electron precipitation increases polar NO_x concentrations up to 215 %, 59 %, and 7.8 % in the lower thermosphere, mesosphere, and upper stratosphere, respectively, when compared to no auro-

ral electron forcing in the atmospheric model. These results demonstrate the potential of combining magnetospheric and atmospheric simulations for detailed studies of solar wind–atmosphere coupling.

1 Introduction

Gaining insight into the polar mesosphere–lower thermosphere–ionosphere (MLTI) region poses a particular challenge. The MLTI extends from roughly 80 to 200 km, a range that is beyond the reach of many ground-based observations and below the optimal range for most satellite measurements (Palmroth et al., 2021). Therefore, accurate modelling of the MLTI is essential to augment the scarce direct measurements and deepen our understanding of this region. The polar MLTI (polewards of 60°) is influenced by solar radiation, which generates both daily and seasonal variations due to the planet's rotation and axial tilt. Additionally, this region is also affected by the electromagnetic forces from the magnetosphere, leading to complex interactions between the neutral atmosphere and the ionosphere. These interactions include several mechanisms concerning the energetics, dynamics, and chemistry of the MLTI that remain poorly understood (Sarris et al., 2023). While these topics are intricately linked, this study focuses on the chemistry part, particularly on the role of energetic particle precipitation in the ionisation and composition of the MLTI. More specifically, we focus on the role of auroral

electrons in impacting the composition of the polar MLTI in atmospheric modelling.

Nitric oxide (NO), a member of the odd nitrogen family (NO_x , defined as the sum of N, NO, and NO_2), is one of the most important species in polar MLTI energetics (e.g. Mlynarczyk et al., 2005). Through its descent inside the polar vortex, NO_x also provides a dynamical connection between the MLTI and stratospheric altitudes (Funke et al., 2014). In the upper stratosphere, NO_x transport from above leads to depletion of ozone, which has been measured using satellite-based instruments (Damiani et al., 2016). Because ozone strongly absorbs solar ultraviolet radiation, it is one of the main constituents determining the thermal structure of the stratosphere. Through ozone, NO_x can have an impact on the radiative balance of the polar atmosphere beyond just within the MLTI.

In the atmosphere, NO_x is produced primarily as a result of solar radiation. However, in the polar regions, especially during the polar night, energetic particle precipitation (EPP) is a major driver of NO_x production (Barth et al., 2001). There are three primary EPP sources of NO_x : solar proton events, radiation belt electrons, and auroral electrons (Veronen and Rodger, 2015). The energy of solar protons and radiation belt electrons is large enough for them to penetrate and produce NO_x in the mesosphere and stratosphere, while auroral electrons, with typical energies on the order of a few kiloelectronvolts, are limited to thermospheric altitudes. Auroral precipitation occurs on a continuous basis into the upper atmosphere in the polar regions, particularly along the auroral oval, located most of the time between 60 and 75° geomagnetic latitude. The auroral electron flux is significantly enhanced during magnetospheric substorms, when the magnetotail is suddenly disrupted and launches a large number of electrons (and protons) of variable energies towards the ionosphere (Palmroth et al., 2017; Palmroth et al., 2023). Substorms and pulsating aurora, a phenomenon during the substorm recovery phase, have been shown to produce NO_x (Seppälä et al., 2015; Turunen et al., 2016). In fact, auroral electrons are probably the largest contributor to the overall polar MLTI NO_x budget (Sinnhuber et al., 2011).

Atmospheric models struggle to produce correct amounts of NO_x in the MLTI when compared to observations (Randall et al., 2015), leading to an incomplete representation of the radiative balance within the polar region through the NO_x impact on stratospheric ozone (Szeląg et al., 2022). Explanations for the discrepancy in NO_x production vary. Previous studies have shown that the transport of thermospheric NO_x to mesospheric and stratospheric altitudes remains a challenge in models (Meraner and Schmidt, 2016; Smith-Johnsen et al., 2022). Hendrickx et al. (2018) also suggested that models underestimate the radiation belt electron forcing and that models have inadequate ion chemistry schemes. The lack of specific focus on auroral electron precipitation may also be a contributing factor to the NO_x underestimation. In long-term climate simulations, models typically include the NO_x

production from auroral electrons using proxy models based on geomagnetic indices and typically use a simplistic representation for their energy spectrum (e.g. Marsh et al., 2007). Detailed electron models that include auroral energies exist (e.g. Wissing and Kallenrode, 2009) and have been used in atmospheric model comparisons (Nesse Tyssøy et al., 2022; Sinnhuber et al., 2021), but emphasis is often on electrons at medium energies (30–1000 keV).

The objective of this paper is to present the first results of a new method to quantify the chemical response of the upper and middle atmosphere to auroral electron precipitation. We report on the first-time combination of magnetospheric and atmospheric modelling and show impacts on NO_x and ozone concentrations resulting from auroral electron forcing. We use eVlasiator, a variant of the global hybrid-Vlasov model Vlasiator, to simulate the electron fluxes at auroral energies from 50 eV–50 keV. Atmospheric ionisation rates derived from these fluxes are then used in the Whole Atmosphere Community Climate Model (WACCM) to determine the polar atmospheric NO_x and O_3 impacts from the MLTI to the upper stratosphere. This study should be understood as an initial effort towards improving the description of the atmospheric effects of particle precipitation by including first principles in the modelling of the auroral electron fluxes, rather than relying on empirical parameterisation of the fluxes. The modelled magnetospheric electron fluxes characterise the altitude extent and distribution of the forcing in more detail than proxy-based parameterisations. We compare the NO_x impact of auroral electron fluxes derived from eVlasiator to that of WACCM's internal auroral forcing. Since current atmospheric models struggle to produce enough NO_x in the MLTI, we study whether the more accurate description of auroral electrons from eVlasiator leads to an increased production of NO_x compared to the simplistic internal auroral forcing in WACCM. We also discuss the limitations of our current approach as well as the potential in understanding the solar wind–atmosphere coupling.

2 Methods

2.1 Vlasiator and eVlasiator

Vlasiator is a global hybrid-Vlasov model simulating the ion-kinetic plasma physics of near-Earth space (Palmroth et al., 2018), which recently became capable of running 6D (three spatial dimensions, three velocity dimensions) simulations (Ganse et al., 2023). Vlasiator models the collisionless ion populations directly as velocity distribution functions (VDFs), discretised on Cartesian grids, allowing for accurate representation of phenomena such as wave–particle interactions (Dubart et al., 2020) and precipitating protons (Grandin et al., 2019b, 2020, 2023), which cannot be modelled using the magnetohydrodynamic (MHD) codes (Palmroth et al., 2006). The spatial simulation domain is divided into either

a uniform Cartesian 2D spatial mesh or a Cartesian 3D mesh with regions of interest refined with an octree cell-based refinement algorithm (Ganse et al., 2023; Kotipalo et al., 2024). Each spatial cell contains a 3D velocity mesh consisting of cubic uniform Cartesian cells. In order to fit the massive amount of simulation data into memory, Vlasiator utilises a sparse algorithm (von Alfthan et al., 2014) where only regions of velocity space which are deemed to contribute to plasma moments in a significant fashion are stored and propagated. This is implemented through discarding blocks of the grid which have phase-space density below a pre-defined threshold, yet maintaining a buffer region around those cells in order to ensure physical behaviour at the edges of the velocity domain. The simulation state is propagated directly via the Vlasov equation, with electric and magnetic fields solved on a regular Cartesian grid and closure provided by MHD Ohm's law with the Hall and electron pressure gradient terms included (Palmroth et al., 2018).

A typical Vlasiator simulation models the global geomagnetic domain of the Earth, spanning tens to hundreds of Earth radii ($R_E = 6371$ km) in each dimension with a spatial resolution of the order of the ion inertial length and with an inner boundary positioned at roughly 5 Earth radii. The velocity grid is defined to be able to discretise the inflowing solar wind. The Earth's magnetic field is modelled as a standard dipole field with the dipole moment set to that of the actual Earth value, facilitating direct comparison with spacecraft observations. Sample simulation parameterisations can be found, for example, in Horaites et al. (2023), Palmroth et al. (2023), and Grandin et al. (2024). Vlasiator runs are propagated on the order of hundreds to thousands of seconds in order to facilitate self-consistent formation of the magnetospheric domain and its dynamics but constrained by the availability of computational resources.

eVlasiator is an offshoot of Vlasiator which considers electrons to be a kinetic population (Battarbee et al., 2021) instead of the usual ions. eVlasiator is not a standard full-kinetic plasma code, instead evaluating electron response to ion-scale structures and fields. What eVlasiator does provide is realistic electron VDFs evaluated for a single point in time from a larger Vlasiator simulation, such as presented in Alho et al. (2022) and validated against spacecraft observations. Since Alho et al. (2022), eVlasiator has been extended to work on 6D Vlasiator inputs, with the code available via Zenodo (Pfau-Kempf et al., 2022). Thus, eVlasiator can be used to infer kinetic electron VDFs along field lines, thus also allowing the calculation of precipitating electron fluxes. Due to numerical constraints, eVlasiator supports the use of a reduced mass ratio, for example $m_p/m_e \approx 183.6$, $m_e/m_{e,\text{phys}} = 10$ in Alho et al. (2022) and $m_p/m_e = 40$, $m_e/m_{e,\text{phys}} = 45.9$ in this study. The use of heavier electrons allows for completing a simulation with significantly reduced computational resources.

2.2 Simulating precipitating particle fluxes

In (e)Vlasiator, precipitating particle differential number fluxes are calculated in every ordinary space cell at every output time step in the simulation. At a given position r in ordinary space, the precipitating electron differential number flux \mathcal{F}_e value at energy E is given by

$$\mathcal{F}_e(E, r) = \frac{v^2}{m_e} \langle f_e(r, v, \theta, \varphi) \rangle_{\theta_0}, \quad (1)$$

with $v = \sqrt{2E/m_e}$ the corresponding electron speed, m_e the electron mass, f_e the electron phase-space density, θ the pitch angle, φ the gyrophase angle, and θ_0 the bounce loss cone angle, where $\langle \cdot \rangle_{\theta_0}$ denotes averaging over θ and φ inside the loss cone. The full derivation of the version of Eq. (1) for proton fluxes can be found in Grandin et al. (2019b). Subsequent studies investigating dayside and nightside auroral proton precipitation under various driving conditions are presented in Grandin et al. (2020, 2023) and Horaites et al. (2023).

In this study, we present for the first time precipitating electron fluxes obtained with eVlasiator. The Vlasiator run used as the basis for the eVlasiator simulation is the same as described in e.g. Palmroth et al. (2023), and the eVlasiator run is the first 3D–3V magnetospheric eVlasiator simulation. The Vlasiator simulation is driven by a constant solar wind of $V_x = -750 \text{ km s}^{-1}$ with a density of $n_p = 10^6 \text{ m}^{-3}$ and a temperature of 0.5 MK. These driving conditions, while not extremely frequent, are comparable to those associated with the fastest of the solar wind high-speed streams (HSSs). HSSs reaching a velocity greater than 700 km s^{-1} occur a few times per year, especially during the maximum and declining phases of the solar cycle (e.g. Grandin et al., 2019a). The inner boundary consists of stationary plasma at a radius of $4.7 R_E$ and is modelled as a near-conducting sphere. The spatial mesh has a base resolution of 8000 km at the lowest refinement level, increasing up to 1000 km in regions of interest such as the magnetotail and the magnetopause. The ion velocity cell resolution is 40 km s^{-1} . The Vlasiator simulation was propagated for a total of 1506 s. The eVlasiator run based on the final state of the magnetospheric Vlasiator simulation utilised a mass ratio of $m_p/m_e = 40$ and an electron velocity cell resolution of 128 km s^{-1} , whilst maintaining the spatial resolution and fields of the Vlasiator simulation. Due to computational constraints, the eVlasiator simulation was run selectively on the inner magnetosphere only, spanning $X \in [-20.1, 17.6] R_E$ and $Y, Z \in [-20.1, +20.1] R_E$, and was propagated for a time extent of 1.4 s. Figure 1 shows the Vlasiator and eVlasiator simulation domains and examples of electron velocity distributions in eVlasiator.

The eVlasiator output for WACCM modelling is the electron differential number flux (Eq. 1). Due to the eVlasiator constraint of a reduced mass ratio, the energisation of the high-mass electrons is assumed to be representative of that affecting real-mass electrons in nature. Consequently,

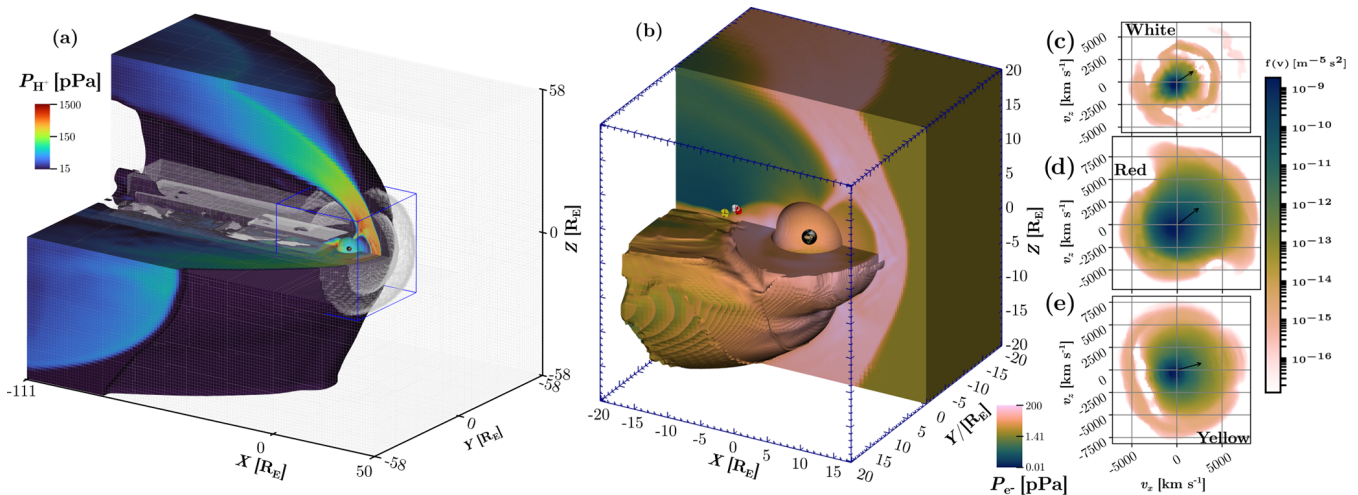


Figure 1. (a) Overview of the 3D-3V magnetospheric Vlasior simulation, grid refinement regions (grey grids), and interior of the magnetosphere, with the extracted eVlasior domain shown as a blue box. Proton pressure is shown on the surfaces. (b) Overview of the eVlasior simulation at its final state, with electron pressure shown on the bow shock, magnetopause, and southern lobe. Earth is visible inside the spherical inner boundary of the simulation domain. (c–e) Examples of electron VDFs from eVlasior on the midnight meridian, from the white, red, and yellow markers in panel (b), showing diverse distribution functions and field-aligned beams on field lines connected to precipitation regions.

the eVlasior differential number flux obtained with high-mass electrons in Vlasior is estimated to be representative of the differential number flux of real-mass electrons and is hence passed forward “as is” for the construction of the forcing dataset.

2.3 Construction of the auroral electron forcing dataset

2.3.1 Mapping of the ionosphere grid to the eVlasior simulation domain

To obtain the forcing dataset for WACCM consisting of precipitating electron fluxes at auroral energies (0.05–50 keV) as a function of magnetic local time (MLT) and geomagnetic latitude (MLAT), we first construct an MLT-MLAT grid at ionospheric altitudes, which we map to the magnetosphere. The procedure is similar to that presented in Grandin et al. (2023), with a notable difference to account for the specific setup of the eVlasior run. It is described in detail in Appendix A.

It is worth highlighting that the obtained precipitating electron fluxes are the result of the physical processes described in the eVlasior simulation. These do not include some of the important processes for auroral electron acceleration and pitch-angle scattering, such as field-aligned potential drops above the ionosphere or inner-magnetospheric waves. As a consequence, the precipitating fluxes extracted from the eVlasior run might differ from reality. For this reason, scaling with observational data has been performed as explained in the next section.

2.3.2 Scaling of the eVlasior fluxes with DMSP observations

To scale the eVlasior differential number fluxes with observations, we use two pairs of overpasses of Defense Meteorological Satellite Program (DMSP) spacecraft during similar driving conditions. Each pair contains a polar cusp overpass in the Northern Hemisphere (NH) and a nightside oval overpass in the Southern Hemisphere (SH). The dates of the events are 1 August 2011 (06:00–07:30 UT) and 10 October 2015 (05:30–06:30 UT). We use measurements from the Special Sensor J (SSJ) instrument (Redmon et al., 2017), which provides particle counts within a field of view spanning $4^\circ \times 90^\circ$ in the observation plane (Hardy et al., 2008). Precipitating electron differential number fluxes are collected in 19 logarithmically spaced energy bins between 30 eV and 30 keV. For the first (second) event, SSJ measurements from the DMSP-F16 (F17) and DMSP-F18 (F17) spacecraft are considered. These two events were previously used for precipitating proton flux comparison between Vlasior and observations in Grandin et al. (2023).

A detailed description of the eVlasior flux scaling based on the DMSP observations is given in Appendix B. In summary, we apply an energy-dependent correction factor to the eVlasior fluxes in the polar cusp and in the nightside auroral oval. There is one such correcting function for the cusp fluxes, $\alpha_{\text{day}}(E)$, and another one for the nightside fluxes, $\alpha_{\text{night}}(E)$. We first calculate the ratio between the measured differential number fluxes by DMSP/SSJ and those obtained with eVlasior, along the DMSP orbit, separately for the dayside and nightside overpasses. Then, for a given electron

energy, we examine the values taken by the obtained ratios along the DMSP orbits and retain a certain percentile, the $QX = X$ th percentile of along-orbit eVlasiator-over-DMSP differential number flux. We obtain a curve of QX as a function of the precipitating electron energy, which we fit in logarithmic scale with a third-order (for the dayside) or second-order (for the nightside) polynomial function. The choice of percentile X to consider for QX is a free parameter in the adjustment, which we constrain by aiming to obtain a ratio between the integrated energy fluxes (corrected eVlasiator over DMSP) as close to 1 as possible (see Appendix B4 for details). We have determined that the 61st (67th) percentile optimally fulfils this condition for the dayside (nightside) ratios. Note that, to calculate the integrated energy flux of eVlasiator precipitation, we use the real electron mass, as the modified mass used for the simulation is cancelled out in the expression of the differential number flux (see Eq. 1). Hence, no further mass correction is needed to infer the integrated energy flux. Finally, once the scaling ratios $\alpha_{\text{day}}(E)$ and $\alpha_{\text{night}}(E)$ are determined, we use them to calculate the corrected eVlasiator differential number fluxes in the corresponding region (dayside or nightside). This is done by multiplying the original fluxes by the ratios. Note that, while the fitting procedure is performed in log–log scales, the correction coefficients are indeed applied in the linear domain.

2.4 Whole Atmosphere Community Climate Model

The Whole Atmosphere Community Climate Model (WACCM) is a global 3D chemistry–climate model that covers the altitude range from the surface up to about 140 km. The model incorporates various physical processes and interactions within the atmosphere, including dynamics, chemistry, radiation, and their interactions with the Earth's surface and external forcings such as solar radiation and greenhouse gases (Marsh et al., 2013; Gettelman et al., 2019). Here, we use WACCM-D, a variant of WACCM that enhances standard parameterisations of HO_x and NO_x production by incorporating a comprehensive ionospheric chemistry. This alteration aims to better replicate the observed impacts of energetic particle precipitation on the composition of the mesosphere and upper stratosphere (Verronen et al., 2016; Andersson et al., 2016). We conducted specified dynamics simulations where horizontal winds, temperature, pressure, surface stress, and heat fluxes are adjusted to 3-hourly Modern-Era Retrospective Analysis for Research and Applications (MERRA-2) reanalysis data (Molod et al., 2015). The model is constrained by the reanalysis data up to about 50 km, while the dynamics are free-running at altitudes above. We use version 6 of the model with a latitude \times longitude resolution of $0.95^\circ \times 1.25^\circ$.

2.4.1 Energetic particle forcing in WACCM and implementation of auroral electrons from eVlasiator

In WACCM-D, ionisation by EPP drives the initial production rates of ions and neutrals due to particle impact ionisation, dissociative ionisation, and secondary electron dissociation (Verronen et al., 2016, Table 1). These rates are incorporated in the WACCM ion and neutral chemistry scheme, connecting EPP forcing to the NO_x and ozone concentrations. As a default, WACCM input of solar and geomagnetic forcing is taken as recommended for the Coupled Model Intercomparison Project Phase 6 (CMIP6) (Matthes et al., 2017). In addition to total and spectral irradiance, this dataset also includes atmospheric ionisation rates due to solar protons, medium-energy electrons, and galactic cosmic rays. These CMIP6 particle forcings are input into WACCM as daily atmospheric ion production rates. The solar proton forcing is based on satellite observations of proton fluxes at energies 1–300 MeV (Matthes et al., 2017), while the medium-energy electron forcing uses the electron precipitation model by van de Kamp et al. (2016) for energies 30–1000 keV. We have included these recommended CMIP6 solar and geomagnetic forcing data in all our WACCM-D simulations.

Unlike the solar protons, medium-energy electrons, and galactic cosmic rays, WACCM's auroral electron forcing is not directly input as ionisation rates. Instead, the auroral electron precipitation forcing is driven by the daily geomagnetic Kp index based on the auroral model by Roble and Ridley (1987). The ionisation from auroral electrons is represented by a Maxwellian energy distribution and a characteristic energy of 2 keV. WACCM also makes use of the three-dimensional nitric oxide empirical model (NOEM) to set the NO concentration at WACCM's upper boundary. The inclusion of NOEM in WACCM simulations accounts for the production of NO above WACCM's altitude range. NOEM is driven by Kp, day of year, and solar 10.7 cm radio flux (Marsh et al., 2004). As such, NOEM also includes effects of auroral electrons on NO_x . However, since the auroral electrons mostly precipitate in the lower thermosphere (95–120 km) (e.g. Matthes et al., 2017), the main impact of auroral electrons falls well within WACCM's altitude range. For this reason we focus on replacing the default Kp-driven auroral model by Roble and Ridley (1987) with auroral forcing from eVlasiator in our WACCM simulations and maintain NOEM as part of the WACCM setup.

In order to replace the default parameterisation of the auroral electron forcing within WACCM, a new ion production rate (IPR) input code was applied (Häkkinen, 2024). The new IPR code turns off the Kp-driven auroral model and enables inputting auroral electron forcing as ionisation rates, similar to the other energetic particle forcing inputs. Since the eVlasiator auroral electron fluxes were available on a magnetic-local-time-dependent grid, we implemented this as part of the new IPR code, enabling MLAT \times MLT ionisation

forcing. In addition to geomagnetic latitude, support was included for L-shell \times MLT grids, as well as multiple time steps per day. A separate version of the IPR code which does not turn off the Kp aurora was also created for possible future use.

Using the eVlasiator electron energy–flux spectra, we calculated corresponding forcing for our WACCM atmospheric simulations. We made use of the method of parameterised electron impact ionisation by Fang et al. (2010). This is the same method that was used to create electron ionisation rates for the CMIP6 (van de Kamp et al., 2016; Matthes et al., 2017). Here, however, the electron flux data are not from a proxy model based on satellite observations but from the eVlasiator magnetospheric simulations. The ionisation rate calculation requires an atmosphere which was taken from the NRLMSISE-00 model by Picone et al. (2002). To ensure consistency with the WACCM atmosphere, and in accordance with the CMIP6 procedure (Matthes et al., 2017), the ionisation rates are then divided by the NRLMSISE-00 mass density. When the rates are used as input, they are multiplied by the WACCM atmospheric mass density profiles by the new IPR code.

Since the method by Fang et al. (2010) is derived for precipitating electrons at energies > 100 eV we limited the energy spectrum of the auroral electron fluxes from eVlasiator accordingly. We also limited the higher end of the eVlasiator electron energy spectrum: since the CMIP6 medium-energy electron precipitation already accounts for electrons at energies > 30 keV, we removed energies 30–50 keV from the eVlasiator-derived electron flux energy range to prevent possible double counting. Thus, though the auroral electron fluxes were obtained from eVlasiator in an energy range from 50 eV–50 keV with 32 logarithmically spaced individual grid points, the final ionisation rate calculation was performed at energies 100 eV–30 keV. The atmospheric ionisation rates were calculated at magnetic latitudes between 63 and 88° in both hemispheres with 1° spacing. A half-hour resolution was used for the magnetic local time throughout the day. Figure 2 shows an example of eVlasiator spectra and corresponding atmospheric ionisation rates. Large differences in fluxes at different geomagnetic latitudes result in a similarly large range of ionisation. According to the spectral energy range (electron energies < 30 keV), the bulk ionisation is restricted to altitudes above 90 km.

2.4.2 WACCM simulation setup and output

WACCM-D was run from January 2005 to June 2006 in order to cover both southern and northern hemispheric winters. In this paper we consider outputs of daily average and instantaneous auroral ionisation rates, as well as daily average NO_x and ozone concentrations. The main WACCM-D simulation of this study with the eVlasiator-derived ionisation rates as auroral electron forcing (VLAS) was performed using the new IPR code for WACCM described in Sect. 2.4.1.

We input the auroral ionisation rates in WACCM-D on a MLAT \times MLT grid of $1^\circ \times 0.5$ h resolution. For each day of the simulation we use the same ionisation data, since only one time step was available from the eVlasiator output. Additionally, a reference run (REF) was performed using the new IPR code, with the ionisation input from auroral electrons set to 0 at all grid points as well as the Kp-driven aurora being turned off.

For comparisons with the eVlasiator auroral electron forcing, simulations were carried out using WACCM's parameterised Kp-driven aurora. Since the VLAS run was performed using the same data every day, we use a fixed Kp value for the comparison runs. We performed six separate WACCM-D runs, each with a different fixed Kp index value from 0 to 5 (KP0–KP5), but here we present mostly runs KP1–KP3, since those most closely correspond to the level of auroral ionisation and impact found in the VLAS case. It should be noted that WACCM's default auroral electron forcing is such that using Kp = 0 does not result in no auroral forcing (see Fig. 4b), making the KP0 and REF runs materially different.

As stated in Sect. 2.4.1, WACCM uses NOEM to set the NO concentration at the model upper boundary during simulations. Since NOEM is driven by the Kp index, this makes it necessary to also fix Kp indices for the VLAS and REF runs to ensure comparability with the KP simulations. The Kp value was fixed to 0 for the REF run to create minimal conditions for comparisons and to 2 for the VLAS run. The choice of Kp = 2 for VLAS was made considering the DMSP overpasses used for the scaling of the eVlasiator electron fluxes, which took place during Kp index values around 2 and 3, for 1 August 2011 and 10 October 2015, respectively. All the WACCM-D simulations presented here and their differences are given in Table 1.

3 Results

3.1 Auroral electron precipitation

3.1.1 Auroral electron fluxes from eVlasiator

Figure 3 shows the integrated parameters of the auroral electron precipitation forcing dataset obtained from eVlasiator, after the scaling with DMSP/SSJ observations (see Sect. 2.3.2). Each panel gives the data as a function of geomagnetic latitude (radial coordinate) and MLT (angular coordinate). Figure 3a and b show the precipitating electron integrated energy flux in the Northern and Southern Hemisphere, respectively. We can identify the cusp region on the dayside, between 70 and 80° MLAT and within 09:00–15:00 MLT, with flux magnitudes on the order of 10^8 keV cm $^{-2}$ s $^{-1}$ sr $^{-1}$. On the nightside, the integrated energy flux peaks in the pre-midnight sector and within 65–70° MLAT, reaching magnitudes on the order of 10^9 keV cm $^{-2}$ s $^{-1}$ sr $^{-1}$. The forcing is very symmetrical on the nightside, whereas slight differences

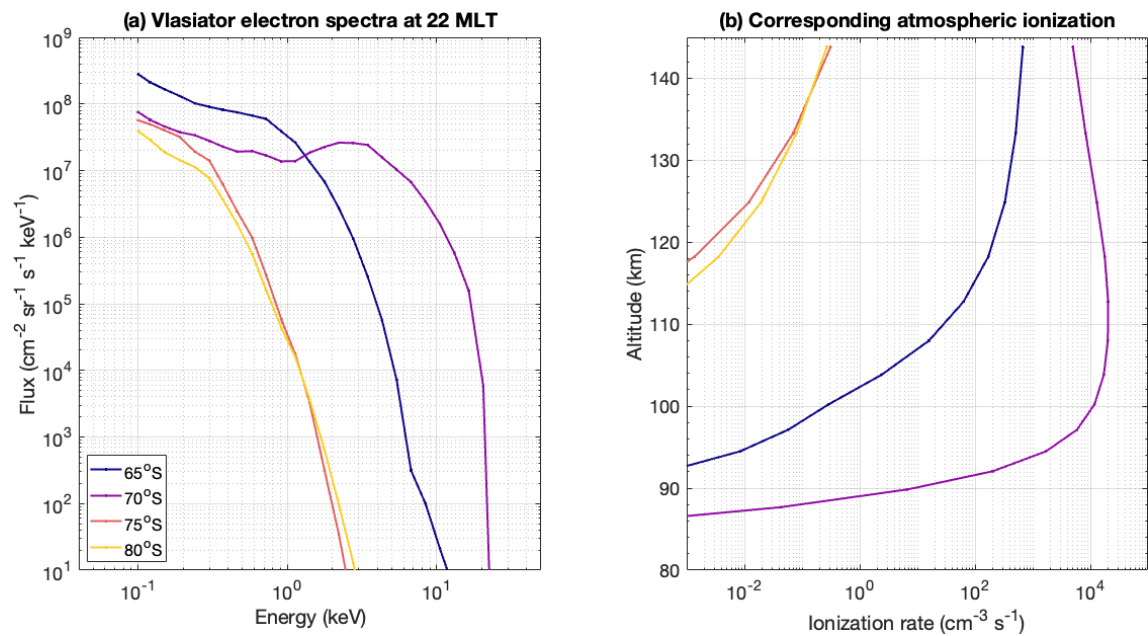


Figure 2. (a) eVlasiator electron spectra at 22 h of magnetic local time at four Southern Hemisphere magnetic latitudes at energies 0.1–30 keV. (b) Corresponding atmospheric ionisation rates.

Table 1. The WACCM-D simulation runs and differences in their setups.

Simulation	Description	Auroral forcing	Kp index (fixed)
REF	Reference run with no aurora	none	0
KP0	Default WACCM-D run with fixed Kp = 0	parameterised	0
KP1	Default WACCM-D run with fixed Kp = 1	parameterised	1
VLAS	Main run with eVlasiator auroral electrons	eVlasiator	2
KP2	Default WACCM-D run with fixed Kp = 2	parameterised	2
KP3	Default WACCM-D run with fixed Kp = 3	parameterised	3

can be noted in the polar cusps – these results are similar to those obtained for auroral proton precipitation and discussed in Grandin et al. (2023). Figure 3c and d present the mean precipitating electron energy. Values are below 1 keV on the dayside and reach up to 5 keV on the nightside.

3.1.2 Ionisation rates

Comparisons of the ionisation rates from eVlasiator and the Kp parameterisation are shown in Figs. 4–6 for the Northern Hemisphere. The vertically integrated ionisation rates in Fig. 4 show the full auroral oval on geographic coordinates on 1 January 2006; panels (a)–(e) depict daily average ionisation, and panels (f)–(j) show instantaneous ionisation at 00:00 UT. Figures 5–6 show the ionisation along the geographic longitude 36.25° W, which has the maximal instantaneous eVlasiator-derived auroral ionisation rates at 00:00 UT.

In the integrated daily average ionisation rates (Fig. 4a–e) the eVlasiator-derived auroral ionisation rates roughly match

the location of the Kp-driven ionisation rates, but the Kp parameterisation has a wider spread within the oval than the eVlasiator auroral ionisation. Especially on the poleward edge of the auroral oval the eVlasiator-derived forcing seems to have a sharp drop-off, which can also be seen in the latitudinal–altitudinal extent of the auroral ionisation shown in Fig. 5b. The sharpness is even more apparent in the instantaneous ionisation rates from eVlasiator (Figs. 4f, 6b). The eVlasiator nightside sharp poleward edge is in line with previous studies (e.g. Newell et al., 1996), while the Kp parameterisation by Roble and Ridley (1987), on the other hand, includes so-called “polar rain” electron precipitation, which extends as a uniform distribution over the geomagnetic pole and thus “softens” the poleward edge of the auroral electron forcing. The polar rain can be seen for the KP2 run in the cross-sections in Figs. 5c and 6c extending towards the pole from the auroral oval region.

The eVlasiator forcing also shows a slight secondary peak in the daily average ionisation on the poleward side in Fig. 4a that can be seen more clearly in the cross-section in

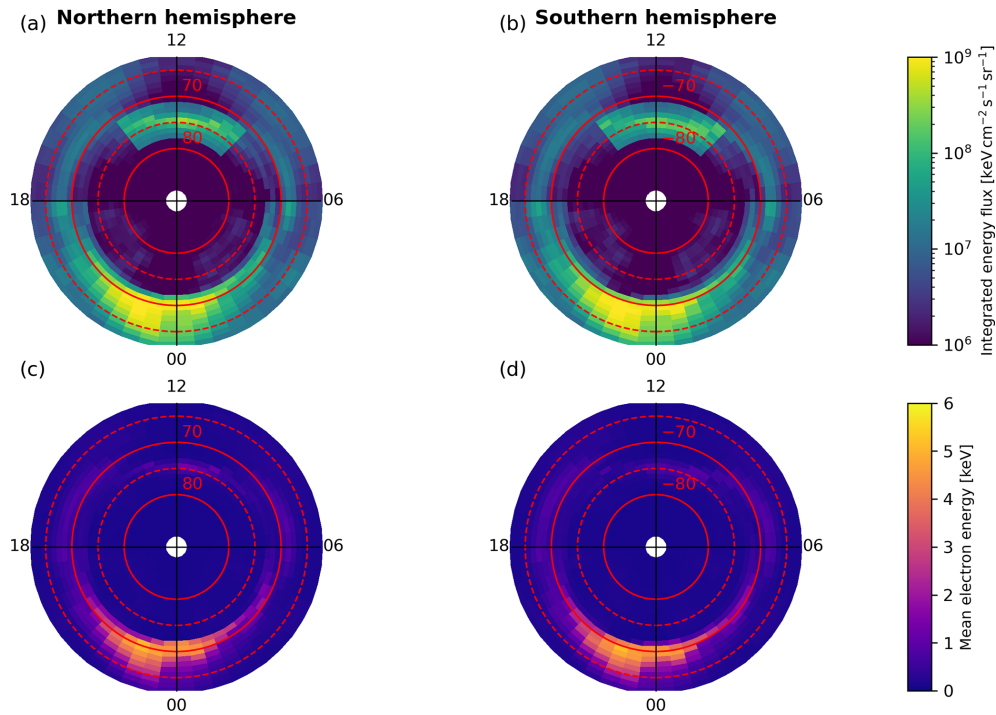


Figure 3. Polar view of integrated parameters of auroral electron precipitation in the eVlasiator run, after scaling with DMSP/SSJ observations (see Sect. 2.3.2). **(a–b)** Precipitating electron integrated energy flux in the Northern and Southern Hemisphere. **(c–d)** Mean precipitating electron energy in the Northern and Southern Hemisphere. In each panel, the radial coordinate is geomagnetic latitude, and the angular coordinate is magnetic local time.

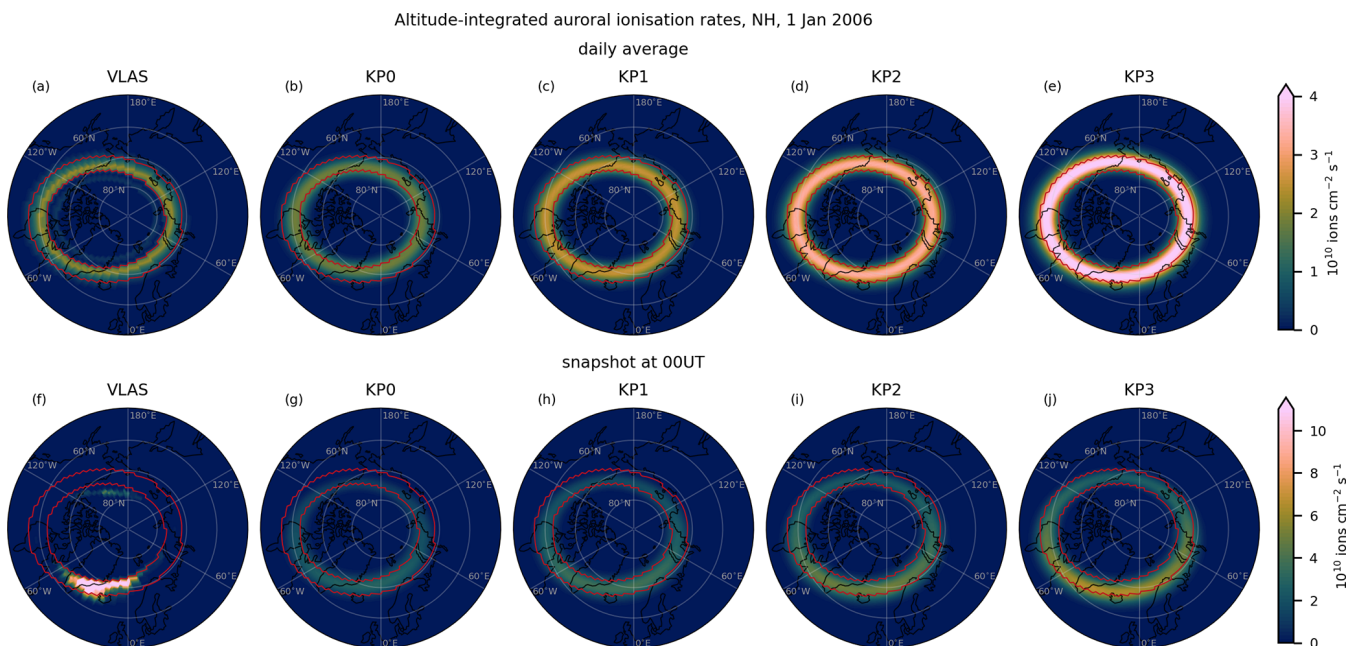


Figure 4. Vertically integrated auroral ionisation rates on geographic coordinates for the Northern Hemisphere (geographic latitude $> 50^\circ$ N) on 1 January 2006: **(a–e)** daily average and **(f–j)** snapshot at 00:00 UT. **(a, f)** VLAS, **(b, g)** KP0, **(c, h)** KP1, **(d, i)** KP2, and **(e, j)** KP3. For comparison, the red lines indicate the region where the VLAS integrated daily average auroral ionisation exceeds 0.5×10^{10} ions $\text{cm}^{-2} \text{s}^{-1}$.

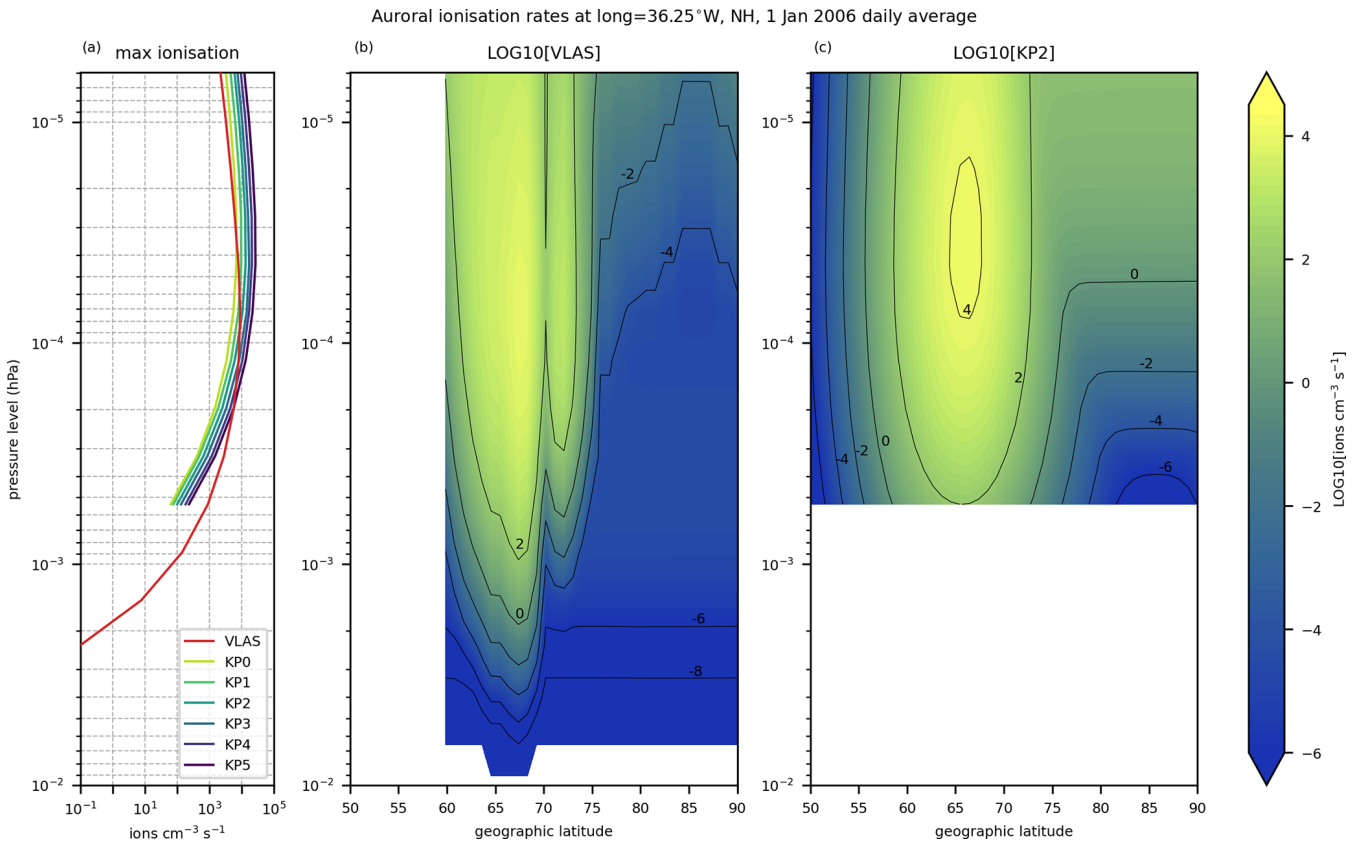


Figure 5. The daily average auroral electron ionisation rates along geographic longitude 36.25°W on 1 January 2006. (a) Maximum ionisation rates from auroral electron forcing at each altitude along the longitude 36.25°W for the VLAS and KP0–KP5 simulations. (b–c) Geographic latitude–altitude extent of the auroral electron forcing as \log_{10} of the auroral ionisation rates for the (b) VLAS and (c) KP2 simulations.

Fig. 5b. Comparing the daily averages to the instantaneous eVlasiator-derived ionisation, shown in Fig. 4f, we see that the two-peak structure in the daily average ionisation results from the dayside and nightside auroral ionisations. The secondary peak comes from the dayside ionisation forcing being located closer to the (geomagnetic) pole than the nightside ionisation.

The clear separation into the nightside and dayside ionisation peaks is also a clear difference between the eVlasiator auroral electron forcing and the Kp parameterisation. While similar to the eVlasiator ionisation in that the nightside has higher ionisation rates than the dayside, the parameterisation shows a continuum between day and night. The eVlasiator, on the other hand, has two clear peaks along the auroral oval, with the dayside being much weaker than the nightside, with little ionisation in the dusk and dawn sectors. This structure of day–night peaks matches how the DMSP scaling of the eVlasiator fluxes was applied.

There is also a difference on the equatorward side of the auroral oval between the eVlasiator-derived ionisation and the Kp parameterisation as the eVlasiator auroral electron forcing stops. This difference in extent results from the limi-

tation in the latitudinal coverage made possible by the eVlasiator run used, as the cutoff latitude of 63° MLAT corresponds to the mapping of the innermost considered locations in the magnetospheric domain (4.8 R_E ; see Appendix A). In future runs with an inner boundary closer to the Earth's surface, this sharp cutoff near the auroral oval's equatorward boundary could be avoided.

The eVlasiator auroral ionisation forcing reaches deeper into the atmosphere down to around 0.01 hPa (~ 80 km), while the Kp parameterisation does not extend below 5×10^{-4} hPa (~ 95 km). Though the eVlasiator ionisation rates are negligible at the 0.01 hPa level, the tapering off of the aurora towards lower altitudes is more gradual compared to the Kp parameterisation. The eVlasiator forcing also peaks at a slightly lower altitude compared to the Kp parameterisation. This can be seen in Fig. 5a, which shows the maximum ionisation rates at each altitude for the VLAS and KP0–KP5 simulations. We can also see that towards the model top eVlasiator on average produces less ionisation than even the KP0 case, but in the instantaneous ionisation rates VLAS has more ionisation than KP3 throughout the vertical extent of the Kp parameterisation (Fig. 6a). The nighttime peak of the

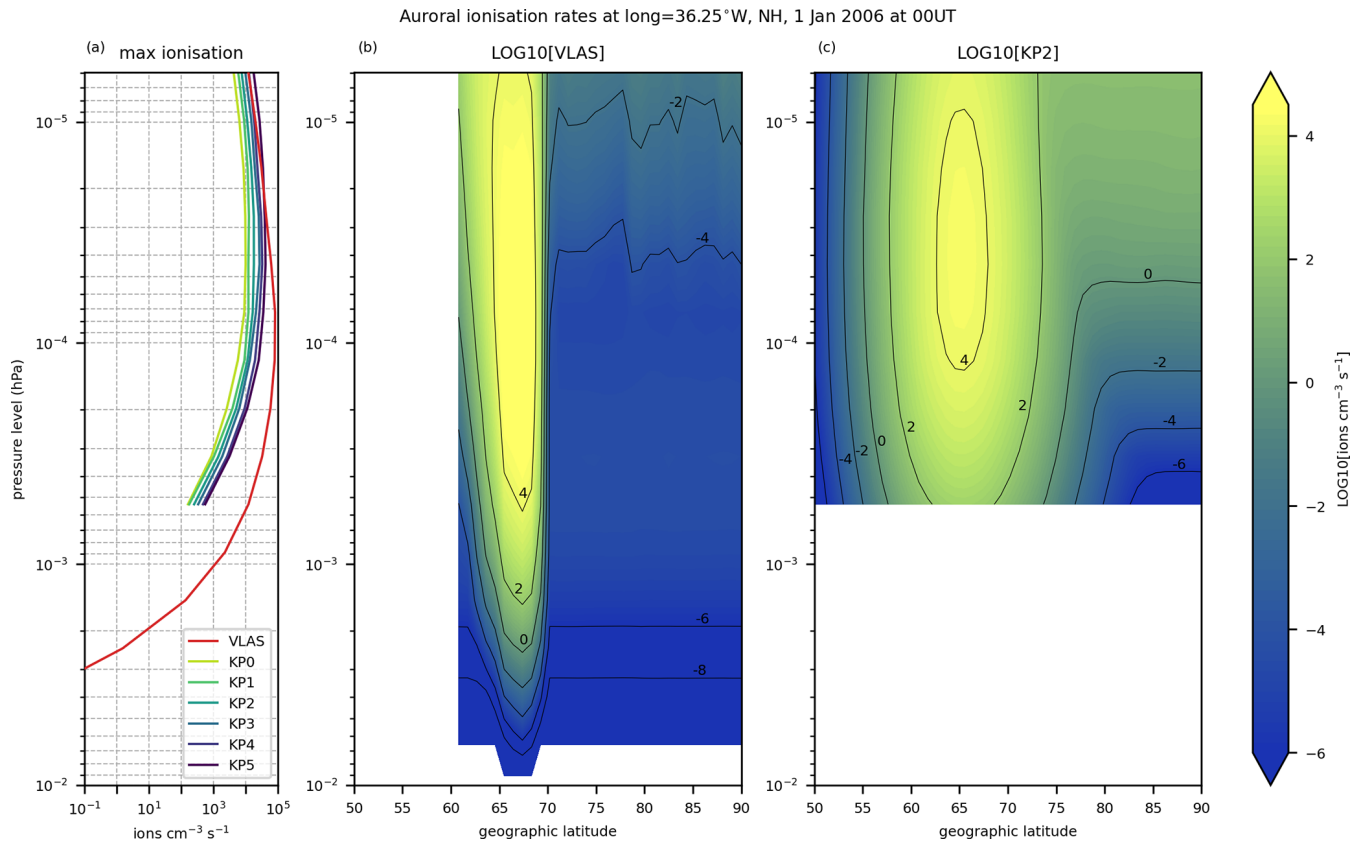


Figure 6. Same as Fig. 5, but for instantaneous ionisation rates on 1 January 2006 at 00:00 UT.

eVlasiator-derived ionisation is much stronger than the Kp parameterisation, with more than an order of magnitude difference even to KP5 at 95 km altitude.

3.2 Atmospheric impact

Figure 7 shows the altitude-integrated NO_x response averaged over the polar region (geographic latitude $> 60^\circ$) in the auroral runs relative to the REF run with no auroral electron forcing. The polar averages have been calculated by weighting with the cosine of the geographic latitude to account for the increasing grid point density towards the poles. For both the SH and NH we clearly see the NO_x impact during the winter season for all the auroral forcing scenarios. The effect is naturally strongest in the thermosphere, where the auroral electrons have a direct impact, with the eVlasiator auroral precipitation causing an NO_x increase of up to 215 % (from 1.62×10^{14} molec.cm⁻² in REF to 5.13×10^{14} molec.cm⁻² in VLAS) in the SH lower thermosphere (~ 85 – 125 km). The descent of the produced NO_x can also clearly be seen in the mesosphere (~ 50 – 85 km) and upper stratosphere (~ 25 – 50 km), where NO_x is increased by up to 59 % (from 3.06×10^{14} to 4.87×10^{14} molec.cm⁻²) and 7.8 % (from 1.61×10^{15} to 1.74×10^{15} molec.cm⁻²), respectively. The corresponding VLAS peak NO_x impacts in the

NH are 106 % (from 2.30×10^{14} to 4.74×10^{14} molec.cm⁻²), 49 % (from 2.65×10^{14} to 3.95×10^{14} molec.cm⁻²), and 2.7 % (from 1.46×10^{15} to 1.50×10^{15} molec.cm⁻²) for the lower thermosphere, mesosphere, and upper stratosphere, respectively. In the SH the descent of the NO_x produced by auroral electrons is also evident in the lag in the peak occurrence times, as the strongest SH thermospheric, mesospheric, and stratospheric NO_x impacts occur in June, July, and August, respectively. The impact also grows weaker during the descent, since the background levels of NO_x are generally higher at the lower altitudes, and not all the produced NO_x descends.

Comparing the Kp-driven auroral precipitation runs, there is a clear scaling effect in Fig. 7: the NO_x impact grows stronger with increasing Kp. Even in the KP0 case the SH lower-thermospheric NO_x is increased by 98 % (from 1.35×10^{14} to 2.68×10^{14} molec.cm⁻²), with KP3 reaching an increase of over 380 % (from 1.68×10^{14} to 8.12×10^{14} molec.cm⁻²) in the SH. The eVlasiator auroral forcing run (VLAS) corresponds to the KP1 and KP2 simulations in terms of the NO_x impact, often coming closer to the KP1 scenario. This is despite the weaker daily average ionisation rates seen in Fig. 4 from the DMSP-scaled eVlasiator electron fluxes. It seems that the strong nighttime peak ionisation in the eVlasiator run compensates for the lack of continuous

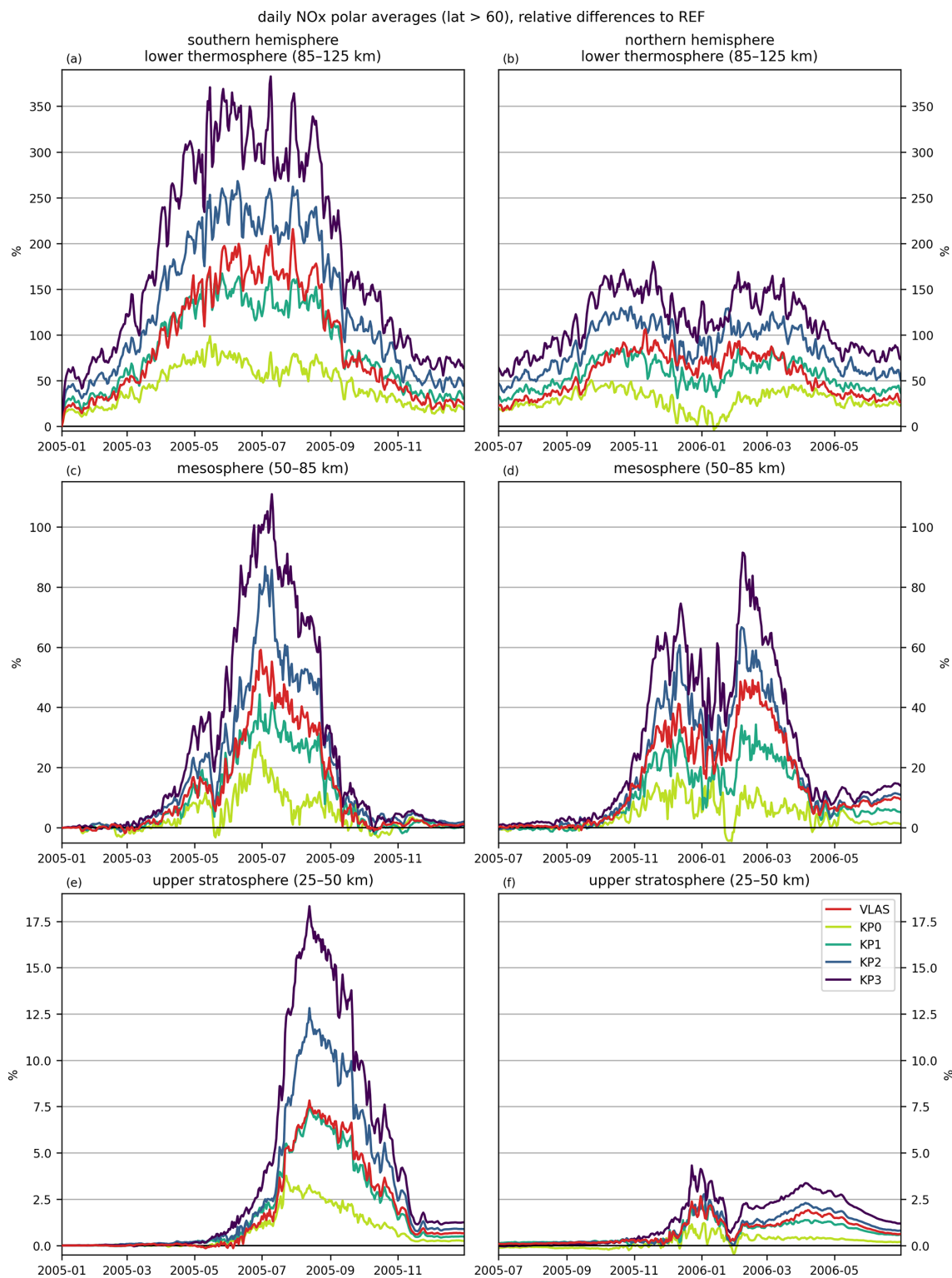


Figure 7. Auroral impact on NO_x concentrations: polar averages (geographic latitude > 60°) of the integrated (a–b) lower thermosphere, (c–d) mesosphere, and (e–f) upper stratosphere for the (a, c, e) SH and (b, d, f) NH winters. Relative difference of the auroral precipitation simulation runs (colours) compared to the REF simulation. The lower thermosphere is integrated from 3×10^{-3} to 1×10^{-5} hPa (~85–125 km), the mesosphere from 1 to 3×10^{-3} hPa (~50–85 km), and the upper stratosphere from 30 to 1 hPa (~25–50 km).

auroral forcing seen in the Kp parameterisation. The reverse may also be true: the Kp parameterisation may be compensating for a lack of high enough ionisation rates by applying relatively high ionisation throughout the day.

The strongest impacts are consistently seen in the Southern Hemisphere. The differences between the hemispheres can be explained by the instability of the polar vortex in the NH, as well as the sudden stratospheric warming (SSW) that occurred in mid-January 2006 (Manney et al., 2008; Butler et al., 2015). This is likely the cause of the double peaks in the NO_x impact in the NH, since the anomalous dynamical conditions due to SSW result in increased NO_x levels in all the WACCM simulations, including REF, so the relative differences decrease during the SSW. Later in the winter strong downward transport resumed and caused a sharp increase in NO_x in the mesosphere (Randall et al., 2009), which is also seen in our simulations.

The difference in the descent of NO_x between the two hemispheres can also be seen in the NO_x profiles shown in Fig. 8. The profiles are averaged over the polar region (geographic latitude $> 60^\circ$) with cosine weighting, as in Fig. 7, and additionally over the winter months for each hemisphere. In the NH there is very little difference between the auroral runs and the REF simulation at stratospheric altitudes, whereas in the SH the runs are distinguishable from each other down to about the 7 hPa level. This is due to the more efficient downward transport of NO_x within the polar vortex in the SH than NH. As in Fig. 7, the VLAS NO_x profiles most closely correspond to the KP1 and KP2 scenarios. We also see the scaling of the Kp parameterisation as the impact gets progressively stronger from KP0 to KP3.

For more details on the spatial distribution of the auroral precipitation NO_x impact, Fig. 9 shows the REF winter-time averages in both hemispheres and the increase in the VLAS simulation relative to REF. The REF number densities show a difference in the vertical distribution of NO_x between the hemispheres, also visible in the profiles in Fig. 8. In the north, NO_x has a stronger polar peak at thermospheric altitudes than SH, whereas at mesospheric altitudes the SH has more NO_x than the NH. The NH thermospheric peak is visible in the REF NO_x profile (Fig. 8b), while at mesospheric altitudes there seems to be a drop in the REF NO_x concentration. The mesospheric NO_x drop does not seem to be present in the SH (Fig. 8a), leading to the difference in NO_x levels seen in Fig. 9b and e. The occurrence of a solar proton event in mid-May 2005 likely contributes to the SH NO_x in the mesosphere, as the proton precipitation penetrates to mesospheric altitudes. The increased NO_x production and the longer chemical lifetime in the winter pole allow NO_x to accumulate in the SH mesosphere. In the NH the SSW may also be leading to disruption in the vertical transport of NO_x so that a greater proportion of produced NO_x stays in the thermosphere rather than being transported downward.

The spatial distribution of NO_x in the REF simulation also shows the difference in the stability of the polar vor-

tices. In the SH mesosphere and upper stratosphere NO_x is rather symmetrically distributed around the pole due to the stable polar vortex during the winter. In the NH, on the other hand, the less stable polar vortex results in both the mesospheric and upper-stratospheric NO_x concentrations being distributed asymmetrically and off-pole. The mesospheric NO_x peak is also slightly shifted compared to the stratospheric NO_x trough, indicating vertical shifts in the polar vortex. The SSW that occurred during the 2005–2006 NH winter likely adds to the instability of the NH polar vortex.

In the VLAS run, NO_x is clearly increased throughout the thermosphere and mesosphere and not just in the auroral oval latitudes, as NO_x is transported from the production region. In the upper stratosphere, the impact is confined inside the polar vortex latitudes with little impact outside it. The SH lower thermosphere does show the effect of the electron precipitation both inside and outside the auroral oval, with the strongest NO_x responses reaching over 200 %, corresponding to Fig. 7a. The NH thermospheric NO_x response is much weaker than the SH, and the auroral oval pattern can only be distinguished in the North American longitude sector. The weaker response and its longitudinal distribution can overall be explained by the REF NO_x levels being higher in the NH than the SH and by the location of the NH thermospheric NO_x peak over the Eurasian longitude sector.

In the mesosphere, the relative auroral precipitation impact is stronger in the NH than the SH, again explained by the difference in the REF background levels. This corresponds well to the mesospheric VLAS impacts in Fig. 7c–d. Stratospheric impacts again show the differences in the REF NO_x number densities between the hemispheres. The SH clearly shows the impact centred around the pole, since the NO_x produced by the auroral precipitation descends within the polar vortex from thermospheric altitudes to the stratosphere. In the NH the VLAS auroral electron impact in the stratosphere has a more irregular form, and it is located off-pole, showing the less stable NH polar vortex.

The upper-stratospheric ozone responses to the auroral electron forcing scenarios are shown in Fig. 10. The O_3 impact is much weaker than NO_x , with a peak decrease of 0.80 % (from 1.829×10^{18} to 1.814×10^{18} molec. cm^{-2}) in SH upper-stratospheric O_3 in the VLAS simulation. Comparing the KP3 SH results from Figs. 7 and 10, we see that an NO_x increase of over 380 % in the lower thermosphere leads to an increase of around 18 % NO_x in the upper stratosphere, corresponding to a reduction in upper-stratospheric O_3 by only 1.68 % (from 2.048×10^{18} to 2.014×10^{18} molec. cm^{-2}). As with NO_x , the ozone impact is stronger in the SH than in the NH, where the VLAS upper-stratospheric ozone decrease is around 0.33 % (from 2.803×10^{18} to 2.794×10^{18} molec. cm^{-2}). Even in the KP3 case the NH impact is only 0.45 % (from 2.747×10^{18} to 2.735×10^{18} molec. cm^{-2}) when compared to the reference run.

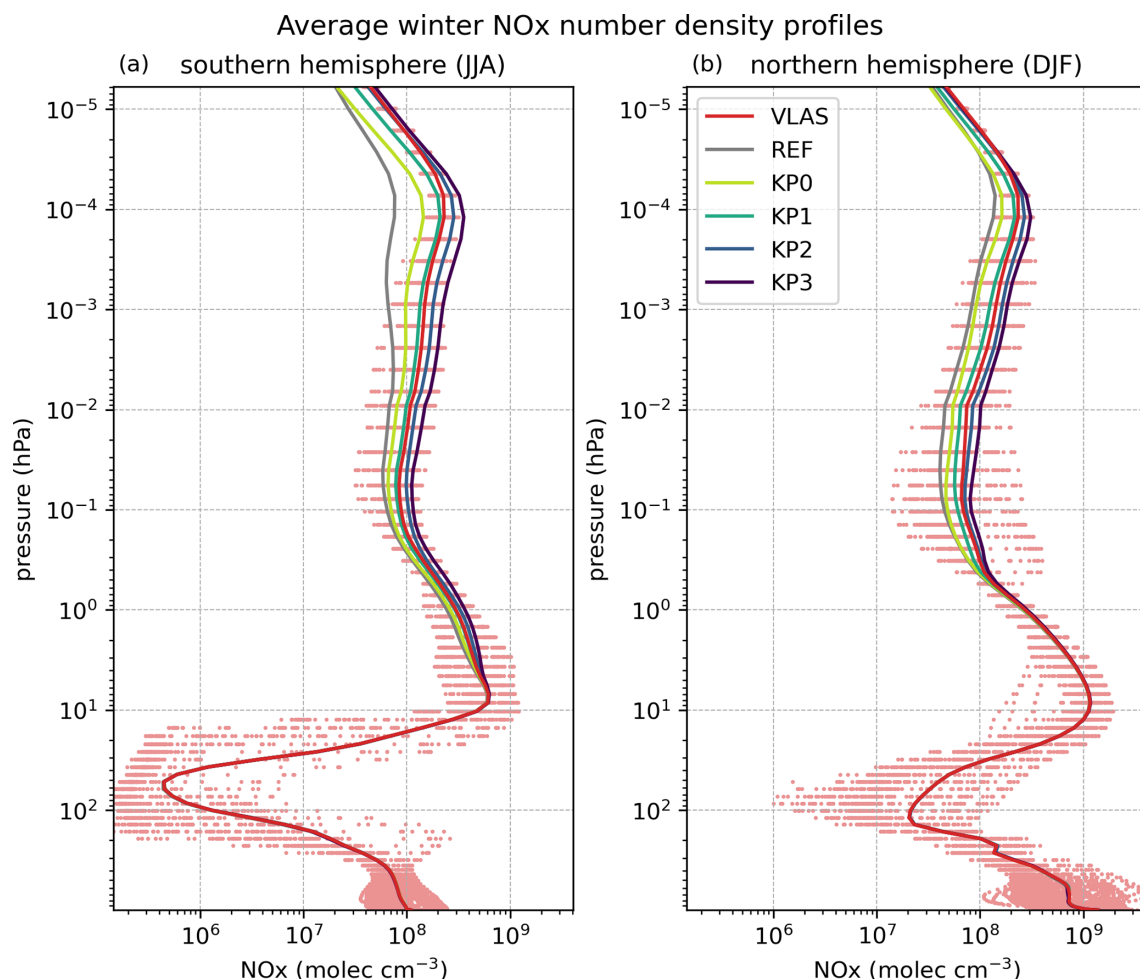


Figure 8. Average NO_x profiles (solid lines) during wintertime for the REF, VLAS, and KP0–KP3 simulations in the (a) SH (June–August 2005) and (b) NH (December 2005–February 2006) polar regions (geographic latitude > 60°). The dots represent daily NO_x number densities in the VLAS simulation.

4 Discussion

Our results demonstrate a successful one-way interfacing of magnetospheric and atmospheric simulations. We are able to produce realistic auroral electron precipitation fluxes from eVlasiator, and they have been applied as auroral electron forcing in WACCM. The simulated electron fluxes produce atmospheric impacts comparable to WACCM's current auroral electron parameterisation, but with enhanced information on energy and spatial distribution. Thus this work presents the potential for future studies on the effects of the solar wind on the atmosphere, e.g. for the study of the atmospheric impacts of magnetospheric substorms. Eventually, atmospheric forcing could be driven directly by solar wind parameters instead of proxy-based parameterisations built on limited magnetospheric electron flux data. Since solar wind parameters can be observed earlier than e.g. the geomagnetic activity determining the Kp index, this could lead to improved, near-real-time predictions of the atmospheric response in the fu-

ture. First steps towards this include the production of time-dependent auroral electron precipitation forcing from the magnetospheric simulations on an extended temporal scale more useful to long-term atmospheric simulations.

Our results show a clear difference in the structure of the auroral electron forcing between the Kp parameterisation and eVlasiator. While eVlasiator produces a high nighttime peak in ionisation coupled with a much weaker daytime peak, the Kp parameterisation applies ionisation forcing throughout the day, with much less diurnal variability. This leads to a difference in the daily average ionisation rates as well. Comparing the VLAS, KP2, and KP3 cases, the parameterisation produces on average higher ionisation than the scaled eVlasiator auroral electron fluxes, but the eVlasiator nighttime peak integrated ionisation is greater than the KP3 peak by a factor of approximately 2.5. This is despite scaling the eVlasiator electron fluxes with the DMSP observations during Kp index values of 2–3. On average the Kp parameterisation may therefore be overestimating the auroral electron forcing, but

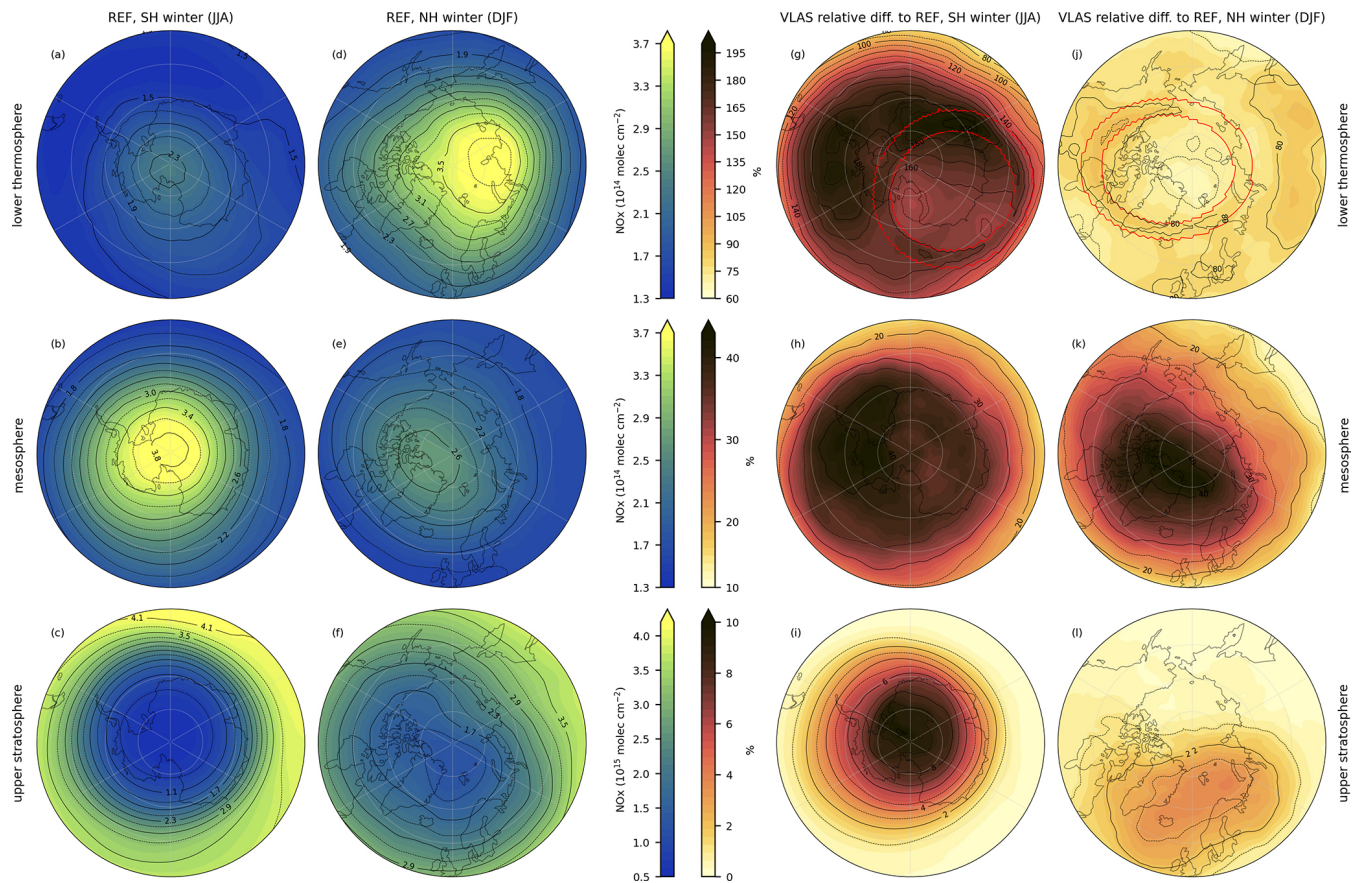


Figure 9. (a–f) Altitude integrated REF NO_x number densities and (g–l) the relative NO_x impact of the VLAS simulation compared to REF, for (a–c, g–i) SH and (d–f, j–l) NH polar regions (geographic latitude $> 50^\circ$). Both the concentrations and relative differences are averaged over the winter seasons (June–August 2005 for SH, December 2005–February 2006 for NH). The red lines show the auroral oval by indicating the region where the VLAS integrated daily average auroral ionisation exceeds $0.5 \times 10^{10} \text{ ions cm}^{-2} \text{ s}^{-1}$ on (g) 1 July 2005 and (j) 1 January 2006, as in Fig. 4. The atmospheric layers – (a, d, g, j) lower thermosphere, (b, e, h, k) mesosphere, and (c, f, i, l) upper stratosphere – correspond to Fig. 7.

the lack of a strong nighttime peak seems to at least partially mitigate the overestimation. The new method presented here provides a unique approach to auroral forcing, independent of electron flux measurements, but further studies are needed to ascertain the correct level of auroral electron precipitation, as well as resulting NO_x impacts. Satellite observations of NO_x species could be used to study the accurate levels of NO_x production from auroral electrons to evaluate the model results. This study also uses single WACCM-D runs. While we use the specified dynamics, the auroral electron precipitation occurs well within the free-running altitude range (above 50 km) of WACCM. Ensemble simulations would provide more robust model results on the magnitude of the impact of auroral electrons. eVlasiator simulations of the auroral electron fluxes with conditions corresponding to higher Kp indices should be carried out as well. In addition, electrons at energies beyond the auroral range ($> 30 \text{ keV}$) should also be considered, e.g. through the inclusion of reconnection and radiation belt processes in future versions of Vlasiator. This

could aid in bridging the possible gap between auroral and medium-energy electrons.

Limitations of the magnetospheric models should also be considered. As pointed out in Sect. 2.3.1, eVlasiator does not model all sources of precipitating auroral electrons, and therefore the obtained precipitating fluxes might differ from reality. We have mitigated the effect of this possible discrepancy in this study by using the DMSP observations to scale the electron fluxes, although the scaling can only increase eVlasiator fluxes at energies for which the values are nonzero. For this reason, the high-energy cutoff associated with the sparse description of phase-space density in eVlasiator remains even after the scaling, which translates to a limit altitude below which the eVlasiator fluxes cannot produce ionisation in the atmosphere. Since we have included the CMIP6-recommended medium-energy electron forcing (energies $> 30 \text{ keV}$) in our atmospheric simulations, we excluded the eVlasiator forcing at corresponding energies. Future work should consider the combination of the different

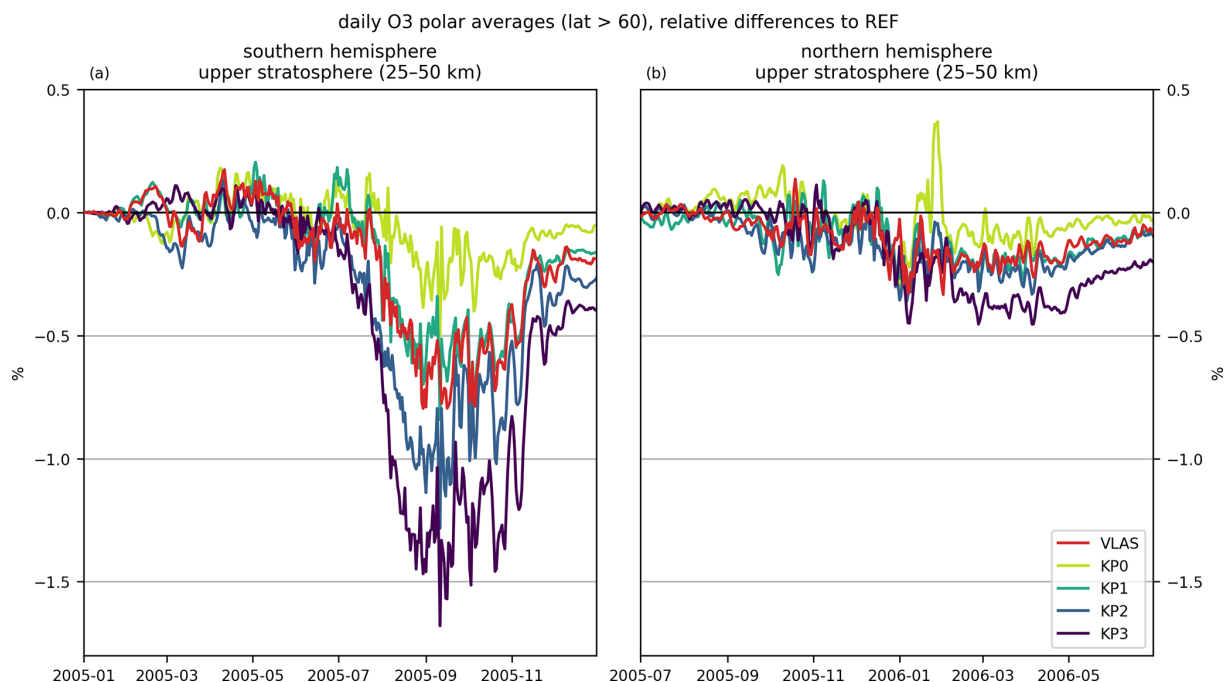


Figure 10. Upper-stratospheric ozone response to auroral electron forcing: daily relative difference in vertically integrated ozone number densities from the auroral precipitation simulation runs (colours) compared to the REF run with no auroral precipitation. Polar averages (geographic latitude $> 60^\circ$) for (a) SH and (b) NH winters.

electron precipitation sources with possibly overlapping energy spectrums in detail.

The latitudinal extent of the eVlasiator-derived auroral precipitation is also limited compared to the Kp parameterisation. On the equatorward edge of the auroral oval this arises from the distance of the eVlasiator run's inner boundary from the surface of the Earth. On the poleward side the difference is partially explained by the inclusion of polar rain in the Kp parameterisation. We have not considered these differences and limitations in the interpretation of the atmospheric impacts of the precipitation. Auroral ionisation rates for future eVlasiator simulations with a less sharp cutoff on the equatorward side of the auroral oval will therefore likely provide an enhancement in the NO_x response, and, as seen in Fig. 9, the NO_x impact is not limited to the auroral oval region.

5 Conclusions

In this study we have demonstrated for the first time a novel approach to investigating the role of auroral electron precipitation in the MLTI. We used eVlasiator to simulate electron precipitation fluxes at auroral energies (50 eV–50 keV) that were scaled using satellite observations to account for deficiencies in the magnetospheric model. Ionisation rates derived from the electron fluxes were then used as input in WACCM-D in order to analyse the atmospheric NO_x and ozone impacts of the auroral electron precipitation. We found the strongest response in the SH polar lower thermo-

sphere, where the eVlasiator-derived auroral precipitation increased NO_x concentrations up to 215 % (from 1.62×10^{14} to 5.13×10^{14} molec. cm^{-2}). In the mesosphere there was an increase of 59 % (from 3.06×10^{14} to 4.87×10^{14} molec. cm^{-2}) in NO_x in the SH, with the NH also reaching an increase of 49 % (from 2.65×10^{14} to 3.95×10^{14} molec. cm^{-2}). The auroral precipitation response can also be seen in the upper stratosphere, where we see an NO_x increase of around 7.8 % (from 1.61×10^{15} to 1.74×10^{15} molec. cm^{-2}), which corresponds to a peak decrease of 0.80 % (from 1.829×10^{18} to 1.814×10^{18} molec. cm^{-2}) in upper-stratospheric ozone.

As a comparison to the eVlasiator-derived auroral precipitation we used WACCM's parameterisation of auroral electron forcing, which is driven by the Kp index based on the auroral model by Roble and Ridley (1987). Overall, the electron precipitation from eVlasiator is similar to the parameterised auroral electron forcing in location and impact, although there are clear differences in the structure of the auroral forcing. While eVlasiator produces a strong nighttime peak in ionisation rates, the parameterisation on average has more ionisation. The latitudinal extent of the eVlasiator auroral electron precipitation is partially limited, and the average ionisation rates are somewhat weaker than the parameterisation, even with the satellite-observation-based scaling of the electron fluxes. On the other hand, eVlasiator provides more detailed energy and spatial distributions of the auroral electron precipitation, with a clear nighttime peak, and the

ionisation forcing reaches deeper in to atmosphere, down to 80 km compared to around 95 km in the parameterisation.

As a next step, in order to validate the accuracy of the model results, specific simulations could be carried out for comparisons with satellite observations. For this, time-dependent auroral electron precipitation data from eVlasiator would be needed in order to model the variability of auroral electron impact in the atmosphere. For example, impacts should be studied during the different phases of substorms. For the future, this work paves the way for a more complete description of auroral electron forcing in atmospheric simulations and, eventually, for the detailed study of solar wind–atmosphere interaction.

Appendix A: Detailed description of the mapping between the ionosphere grid and the eVlasiator simulation domain

To produce an auroral electron forcing dataset for WACCM-D, we need to map the fluxes obtained with eVlasiator to ionospheric altitudes. The procedure detailed below is illustrated in Fig. A1.

Magnetic field lines (in magenta) are followed between the ionosphere (at an altitude of 110 km; points A_i) and the inner boundary of the simulation domain from start points placed every 1° in MLAT and 0.5 h in MLT. Since the magnetic field inside the inner boundary only consists of the Earth dipole and has no perturbed field term, we construct a more realistic mapping by superposing two magnetic field components. The internal contributions to the geomagnetic field are described by a simple point dipole to match the geomagnetic field description used in Vlasiator. The Tsyganenko 2001 (T01; Tsyganenko, 2002a, b) model is used to describe the external field contributions, with the solar wind conditions of the Vlasiator run (see Sect. 2.1), at a date when the geomagnetic dipole was almost perpendicular to the ecliptic plane (11 March 2020, 21:40 UT) and assuming a Dst value of -30 nT. The Python versions of T01 and the Earth dipole field implemented in the geopack library (Tian, 2023) were used for this mapping of atmospheric altitudes to $4.8 R_E$, i.e. just beyond the inner boundary (points B_i). From each grid point, we follow the geomagnetic field obtained by combining the untilted dipole model for internal contributions with the T01 model for external contributions. Up to this step, the procedure is the same as described in more detail in Grandin et al. (2023).

Within the 1.4 s of the eVlasiator run, electrons scattered into the bounce loss cone in the plasma sheet do not have time to reach the inner boundary of the simulation domain. To account for this, we extend the mapping of the MLT–MLAT grid further into the eVlasiator simulation domain so as to reach the magnetospheric regions where precipitating electrons originate. To be consistent, we use the magnetic field from Vlasiator (in red) to extend the mapping outwards

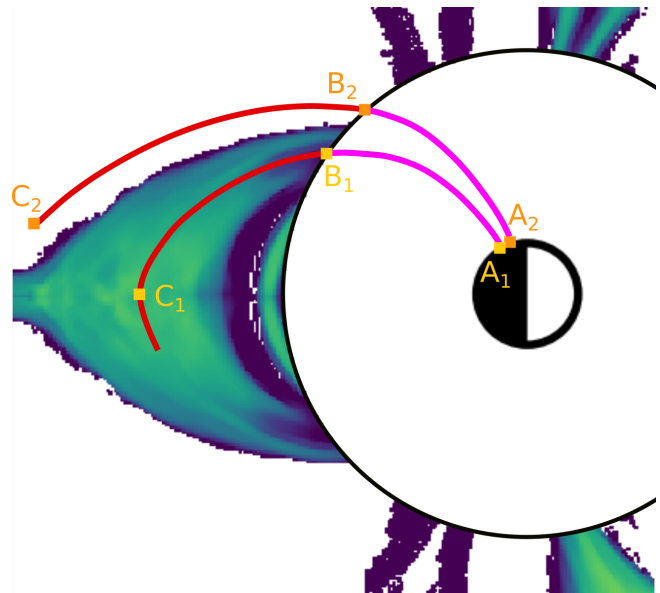


Figure A1. Illustration of the mapping of eVlasiator precipitating electron fluxes to ionospheric altitudes. The view is a slice of the eVlasiator domain in the noon–midnight meridional plane, with the Sun located to the right of the figure. Points A_1 and A_2 are located on the ionospheric grid (Cartesian in MLAT–MLT) at 110 km altitude. Points B_1 and B_2 are located next to the eVlasiator domain's inner boundary at $4.8 R_E$. The magenta lines indicate the superposition of a non-tilted dipole field with the T01 model. The red lines follow the magnetic field within the eVlasiator domain. Point C_1 is located in the equatorial plane, and point C_2 is located at a distance of $7.5 R_E$ from point B_2 along the magnetic field line.

for another $7.5 R_E$ or until reaching the equatorial plane. The value of $7.5 R_E$ was empirically determined; it ensures that this distance is sufficient to reach the transition region for all the closed field lines on the nightside without extending unnecessarily far down the magnetotail or in the cusp for the open field lines.

Finally, along each field line thus obtained and for each electron energy bin, the maximum value of the precipitation differential flux between the inner boundary (points B_1 , B_2) and either the point where the magnetic field tracing was stopped (point C_2) or the equatorial plane (point C_1) is retained. This ensures that precipitating electrons which may not have had time to reach the inner boundary by the end of the electron simulation are taken into account and gives a conservative high value for the differential number flux.

Appendix B: Detailed description of the scaling of eVlasiator electron fluxes with DMSP/SSJ observations

B1 Comparison of eVlasiator fluxes along the DMSP orbits

Figures B1 and B2 show the comparison of eVlasiator precipitating electron fluxes with DMSP/SSJ measurements during the two events with similar driving conditions as in the Vlasiator run (8 August 2011 and 10 October 2015). The top panels show the global view of eVlasiator integrated energy fluxes in both hemispheres, on top of which DMSP/SSJ integrated energy fluxes along the spacecraft's orbits are overlaid. The middle panels enable the comparison of differential number fluxes of precipitating electrons. One can see in particular that overall eVlasiator spectra have a cutoff at high energies, indicating that the high-energy component is often missing compared to DMSP/SSJ observations. This is due to the sparsity threshold used in eVlasiator simulations, which discards velocity cells within which the phase-space density is below the threshold to keep the simulation computationally feasible. Since the phase-space density decreases near the edges of the velocity distribution, applying the sparsity threshold creates a sharp drop at those edges, which translates into a cutoff at high energies in the precipitating flux.

The bottom panels show the ratio between the differential number fluxes measured by DMSP/SSJ and obtained with eVlasiator displayed along the satellites' orbits. Green regions correspond to eVlasiator underestimating the electron precipitation, whereas purple regions correspond to eVlasiator overestimating it, when considering a given event and location along the orbit. The ratios typically range between 0.001 and 1000, highlighting the need for a scaling of the eVlasiator fluxes so that they might be more realistic. It is clear from those bottom panels that the correction to be applied to eVlasiator fluxes must be different on the dayside and on the nightside and that it must be energy-dependent. Below we detail how the corrected eVlasiator fluxes were determined and we justify the choices made in developing the method.

B2 Selection of regions of interest to be corrected

In order to avoid increasing the precipitating electron fluxes outside of the auroral oval (e.g. in the polar cap or in the flanks, where eVlasiator fluxes might be contaminated by boundary effects), we restrict the correction to the cusp and nightside oval regions, as indicated with magenta contours in Fig. B3a–b. The same regions of interest are used for both events. Also, extremely low eVlasiator flux values ($< 0.01 \text{ eI cm}^{-2} \text{ s}^{-1} \text{ sr}^{-1} \text{ eV}^{-1}$) are masked. The masked data are shown in grey in Fig. B3c and e.

B3 Percentile fitting for DMSP / eVlasiator flux ratios

Since we want to obtain correction coefficients for the eVlasiator fluxes as a function of electron energy, we need to find a suitable metric to derive such coefficients based on the ratios between DMSP and eVlasiator fluxes along the DMSP orbits. A quick inspection of Fig. B3e–f reveals that using the mean value (along the DMSP orbits) of the ratio at a given energy would not provide a robust estimate of the needed correction, since, for instance, at 1 keV on the nightside values range from 10^3 (start of the orbit) to < 1 (middle of the orbit), which would result in a mean value skewed to the high values and not necessarily representative of the needed correction coefficient at 1 keV. This is because the eVlasiator fluxes drop off quickly at the high-energy end of their spectra due to the sparse velocity space description (Palmroth et al., 2018). Therefore, instead of using the mean, we use a percentile value as the metric to determine the energy-dependent correction coefficients (one set for cusp fluxes, one set for nightside fluxes).

Figure B4 shows results obtained when considering median (50th percentile) values. We see that the median values of the ratios (blue lines) can be fitted with a third-order polynomial for the cusp and with a second-order polynomial for the nightside (red curves) when considering energies and ratios in logarithmic scale. We can then correct the eVlasiator fluxes by multiplying them with the linear-scale equivalents of those analytical (polynomial) energy-dependent expressions in all regions of interest (cusp and nightside oval). In other words, using the notations introduced in Sect. 2.3.2, we calculated the corrected eVlasiator differential number flux $\mathcal{F}_e^{\text{VLAS,corrQ50}}(E)$ as

$$\begin{aligned} \mathcal{F}_e^{\text{VLAS,corrQ50}}(E) &= \alpha_{\text{day|night}}(E) \mathcal{F}_e^{\text{VLAS}}(E) \\ &= 10^{\sum_i a_i (\log_{10} E)^i} \mathcal{F}_e^{\text{VLAS}}(E), \end{aligned} \quad (\text{B1})$$

with $\mathcal{F}_e^{\text{VLAS}}(E)$ the original eVlasiator differential number fluxes, E the electron energy, and a_i the coefficients of the fitted polynomials.

B4 Adjustment based on the integrated energy fluxes

The median-based corrections presented above lead to an enhancement of the eVlasiator fluxes in a way which gives priority to increasing the energies needing it the most to better resemble observations. However, this increase is still insufficient to be representative of the energy input into the upper atmosphere associated with auroral electron precipitation as obtained in the DMSP observations. Indeed, if we calculate the integrated energy fluxes along the satellite orbits for the corrected eVlasiator data, $\int \mathcal{F}_e^{\text{VLAS}}(E) E dE$, and compare them with the integrated energy fluxes measured by DMSP, $\int \mathcal{F}_e^{\text{DMSP}}(E) E dE$, we find that the former are still significantly lower than the latter. Taking the 90th percentile of the $\int \mathcal{F}_e^{\text{VLAS}}(E) E dE / \int \mathcal{F}_e^{\text{DMSP}}(E) E dE$ ratio along the

DMSF orbits, we obtain values of 0.18 in the cusp and 0.24 in the nightside oval, which means that the corrected eVlasiator fluxes are still 4–5 times lower than in observations using this metric. Using the 90th percentile to compare integrated energy fluxes was chosen to check for possible local overcorrection: we want to ensure that corrected eVlasiator fluxes are mostly on the order of or less than the DMSF fluxes in terms of integrated energy flux. As we see here, performing the correction of the differential number fluxes based on median values yields significantly smaller integrated energy fluxes when compared to observations, meaning that the correction can be made stronger.

Therefore, we have adopted the following strategy to obtain corrected eVlasiator fluxes providing a good match to DMSF/SSJ measurements in terms of integrated energy flux: instead of taking median values of the DMSF / eVlasiator ratios to determine the analytical expression of the energy-dependent correction coefficients, we find the optimal percentiles of these ratios such that the integrated energy fluxes match as closely as possible between corrected eVlasiator fluxes and observations.

We found that selecting the 61st (cusp) and 67th (nightside) percentiles of the DMSF / eVlasiator differential flux ratios along the orbits gives the best results, with corrected eVlasiator precipitation being on par with DMSF/SSJ observations in terms of integrated energy fluxes (90th percentile of the ratios of 0.99 and 1.03 for the cusp and nightside, respectively). The corresponding correction coefficients are given in Fig. B5.

Those coefficients were therefore retained for the eVlasiator flux correction and produced the corrected fluxes shown in Fig. 3. Note that no extrapolation of the corrected fluxes at high energies (where the original eVlasiator fluxes are zero) is performed, meaning that the correction is only applied in the energy domain where the polynomial is fitted.

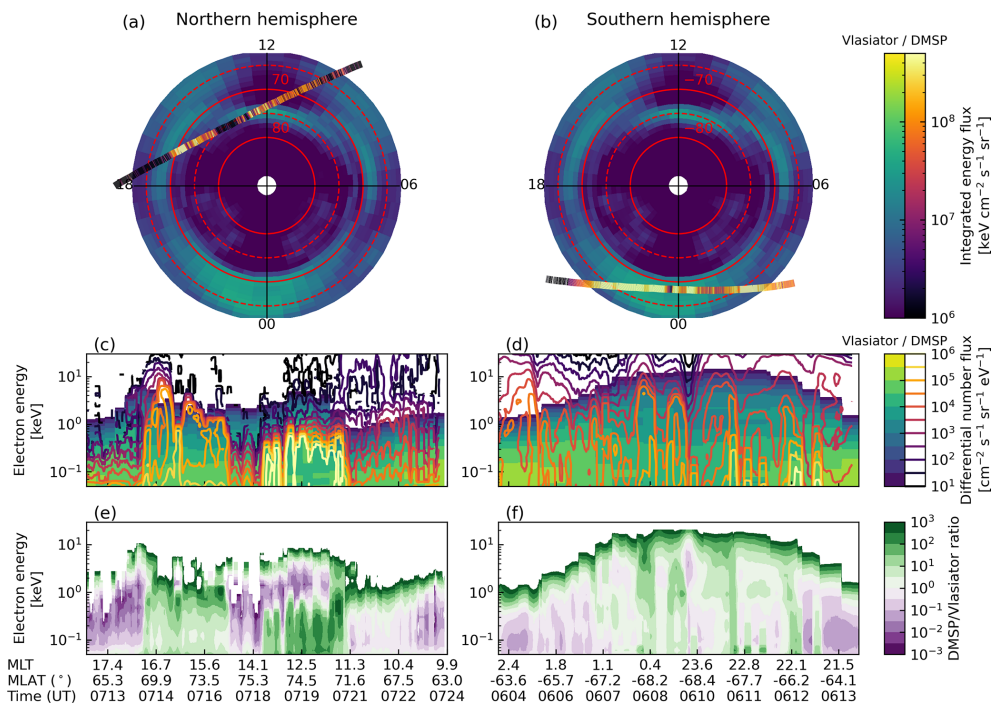


Figure B1. Comparison of eVlasiator and DMSF/SSJ observations during the 1 August 2011 overpasses. (a–b) Integrated energy flux of precipitating electrons obtained with eVlasiator (background) on top of which corresponding measurements by DMSF/SSJ (contours) are overlaid along the spacecraft’s orbits. (c–d) Differential number fluxes along the orbit for eVlasiator (background colour) and DMSF/SSJ (contours). (e–f) Ratio between DMSF/SSJ and eVlasiator differential number fluxes along the orbits.

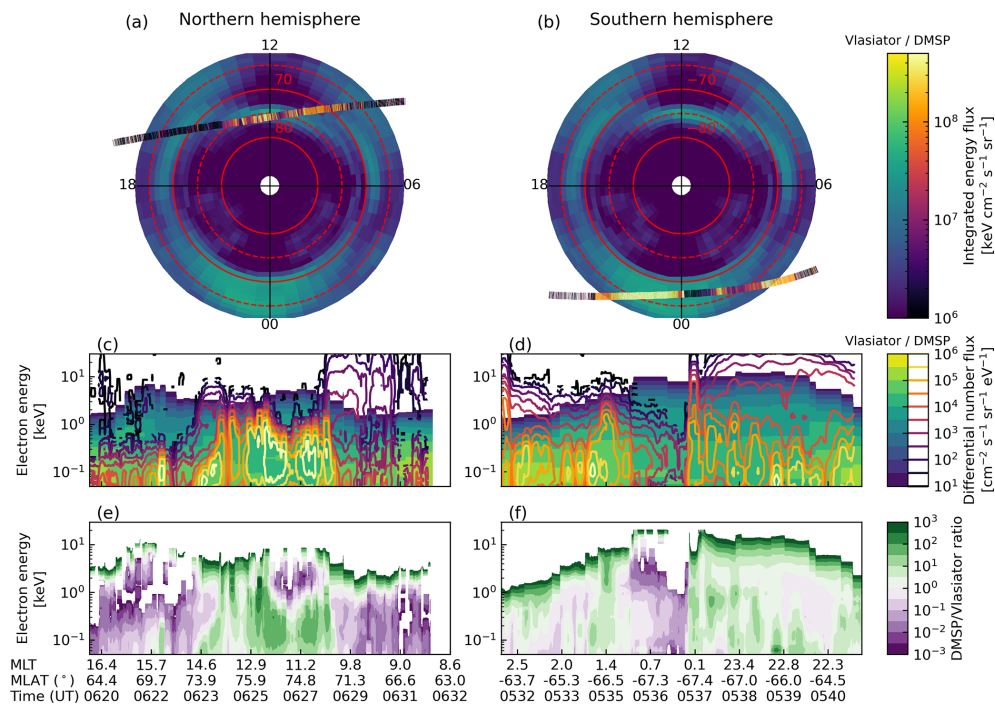


Figure B2. Comparison of eVlasiator and DMSP/SSJ observations during the 10 October 2015 overpasses. Same format as in Fig. B1.

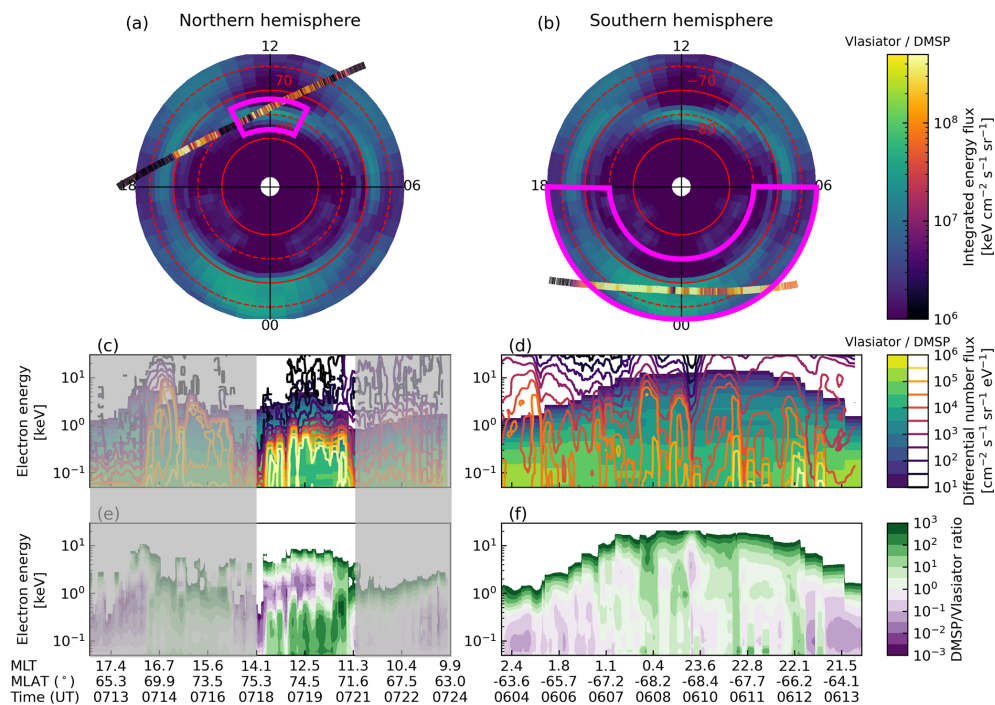


Figure B3. Same as Fig. B1 with regions of interest (cusp and nightside oval) indicated in magenta in panels (a)–(b). The grey shading in panels (c) and (e) indicates the masking used for the dayside overpass to keep only cusp measurements.

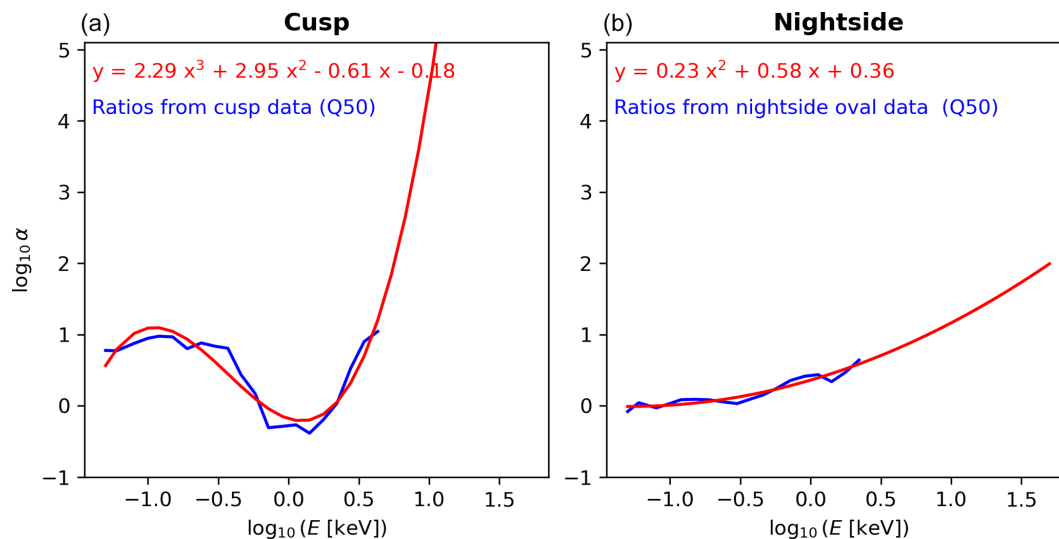


Figure B4. Energy-dependent correction coefficients obtained for the cusp (a) and nightside (b) eVlasiator fluxes by taking the median (Q_{50}) values of the DMSP / eVlasiator flux ratios. The red lines indicate polynomial fits of the data-based curves in blue.

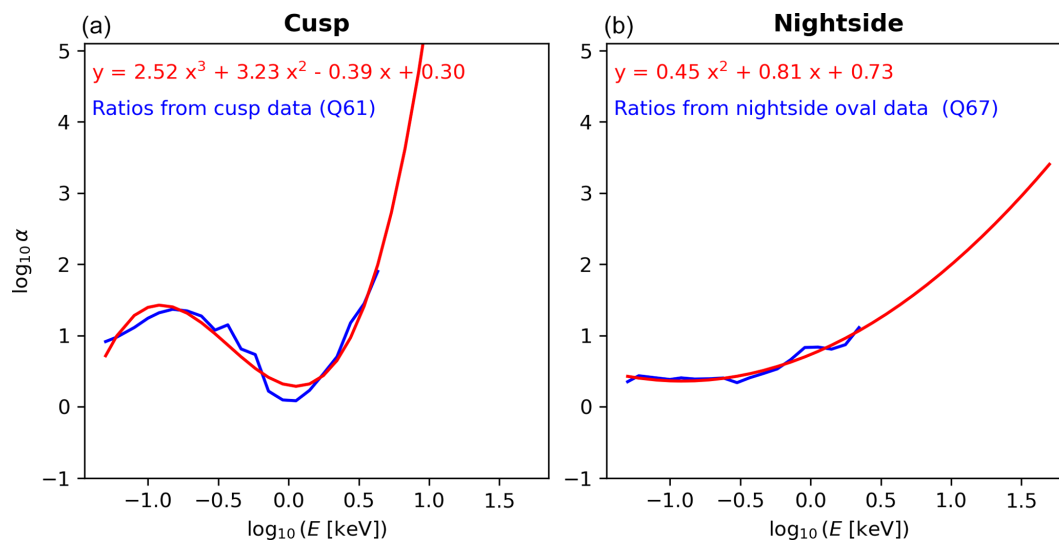


Figure B5. Same as Fig. B4 but using the 61st percentile of the DMSP / eVlasiator flux ratios for the cusp and the 67th percentile for the nightside fluxes.

Code and data availability. The Vlasiator code is open-source under GPL-2, indexed through Zenodo (Pfau-Kempf et al., 2024), and available through GitHub. The eVlasiator release used for this study is similarly available in Pfau-Kempf et al. (2022). The Vlasiator simulation data used for this study consist of several terabytes and are thus not made available online, but the authors accept data requests. The reduced output of the eVlasiator simulation consisting of precipitating electron differential number flux data is available via the Finnish Meteorological Institute research data repository METIS (Grandin, 2024).

The DMSP/SSJ precipitating particle fluxes are openly available and were retrieved from <http://cedar.openmadrigal.org/> (last access: 11 April 2025).

WACCM-D simulation data analysed in this paper are available via the Finnish Meteorological Institute research data repository METIS (Häkkinen and Szeged, 2024a, b, c). The new WACCM IPR code enabling MLT-dependent ionisation input is indexed via Zenodo (Häkkinen, 2024) and publicly available on GitHub at https://github.com/hakkila/waccm_iprmlt (last access: 11 April 2025).

Author contributions. MB and MA developed the eVlasiator approach, with LK extending it to support 3D spatial meshes. MA ran the eVlasiator simulation presented in this work. MG developed the particle precipitation approach of Vlasiator, applied it to the eVlasiator data, conceptualised and implemented the ionospheric mapping and scaling approaches presented in the Appendices and used in this study, and wrote the corresponding sections of the manuscript. MP is the Vlasiator PI, and she participated in conceptualisation of the study and supervised the Vlasiator portion of the study. TH, MES, NK, and PTV participated in planning the WACCM-D simulations. TH carried out the WACCM-D simulations with support from MES. PTV produced the ionisation rates used in WACCM-D from the eVlasiator electron fluxes. TH analysed the WACCM-D data and led the writing of the paper, with all co-authors participating in discussions and providing feedback on the manuscript.

Competing interests. At least one of the (co-)authors is a member of the editorial board of *Annales Geophysicae*. The peer-review process was guided by an independent editor, and the authors also have no other competing interests to declare.

Disclaimer. Publisher's note: Copernicus Publications remains neutral with regard to jurisdictional claims made in the text, published maps, institutional affiliations, or any other geographical representation in this paper. While Copernicus Publications makes every effort to include appropriate place names, the final responsibility lies with the authors.

Acknowledgements. We gratefully acknowledge the DMSP/SSJ community and data stewards and services for providing observations of precipitating particle fluxes. The work of MG is funded by the Research Council of Finland (grants 338629-AERGELC'H and 360433-ANAON). We acknowledge the Research Council of Finland grant 335554-ICT-SUNVAC, the Finnish Centre of Excellence in Research of Sustainable Space (grant number 352846), and the

Flagship of Advanced Mathematics for Sensing Imaging and Modelling (grant number 359196-FAME).

Vlasiator development acknowledges European Research Council starting grant 200141-QuESpace and Consolidator grant 682068-PRESTISSIMO. The CSC – IT Center for Science in Finland and the PRACE Tier-0 supercomputer infrastructure at HLRS Stuttgart (grant nos. PRACE-2012061111 and PRACE-2014112573) are acknowledged as they made these results possible. The Vlasiator team wishes to thank the Finnish Grid and Cloud Infrastructure (FGCI) and specifically the University of Helsinki computing services for supporting this project with computational and data storage resources.

PTV, MG, and NK would like to thank the CHAMOS team for useful discussions (<https://chamos.fmi.fi>, last access: 11 April 2025).

The scientific colour maps *batlow*, *imola*, and *lajolla* (Cramer, 2023) are used in this study to prevent visual distortion of the data and exclusion of readers with colour-vision deficiencies (Cramer et al., 2020).

Financial support. This research has been supported by the Research Council of Finland (grant nos. 335554-ICT-SUNVAC, 338629-AERGELC'H, 352846, 360433-ANAON, and 359196-FAME); the European Research Council, FP7 Ideas: European Research Council (grant no. 200141-QuESpace); and the European Research Council, H2020 European Research Council (grant no. 682068-PRESTISSIMO).

Review statement. This paper was edited by Petr Pisoft and reviewed by three anonymous referees.

References

- Alho, M., Battarbee, M., Pfau-Kempf, Y., Khotyaintsev, Y. V., Nakamura, R., Cozzani, G., Ganse, U., Turc, L., Johlander, A., Horaites, K., Tarvus, V., Zhou, H., Grandin, M., Dubart, M., Papadakis, K., Suni, J., George, H., Bussov, M., and Palmroth, M.: Electron Signatures of Reconnection in a Global eVlasiator Simulation, *Geophys. Res. Lett.*, 49, e98329, <https://doi.org/10.1029/2022GL098329>, 2022.
- Andersson, M. E., Verronen, P. T., Marsh, D. R., Päiväranta, S.-M., and Plane, J. M. C.: WACCM-D – Improved modeling of nitric acid and active chlorine during energetic particle precipitation, *J. Geophys. Res.-Atmos.*, 121, 10328–10341, <https://doi.org/10.1002/2015JD024173>, 2016.
- Barth, C. A., Baker, D. N., and Mankoff, K. D.: The northern auroral region as observed in nitric oxide, *Geophys. Res. Lett.*, 28, 1463–1466, 2001.
- Battarbee, M., Brito, T., Alho, M., Pfau-Kempf, Y., Grandin, M., Ganse, U., Papadakis, K., Johlander, A., Turc, L., Dubart, M., and Palmroth, M.: Vlasov simulation of electrons in the context of hybrid global models: an eVlasiator approach, *Ann. Geophys.*, 39, 85–103, <https://doi.org/10.5194/angeo-39-85-2021>, 2021.
- Butler, A. H., Seidel, D. J., Hardiman, S. C., Butchart, N., Birner, T., and Match, A.: Defining sudden stratospheric warmings, *Bull. Am. Meteorol. Soc.*, 96, 1913–1928, 2015.

- Cramer, F.: Scientific colour maps, Zenodo, <https://doi.org/10.5281/zenodo.8409685>, 2023.
- Cramer, F., Shephard, G. E., and Heron, P. J.: The misuse of colour in science communication, *Nat. Commun.*, 11, 5444, <https://doi.org/10.1038/s41467-020-19160-7>, 2020.
- Damiani, A., Funke, B., Santee, M. L., Cordero, R. R., and Watanabe, S.: Energetic particle precipitation: A major driver of the ozone budget in the Antarctic upper stratosphere, *Geophys. Res. Lett.*, 43, 3554–3562, <https://doi.org/10.1002/2016GL068279>, 2016.
- Dubart, M., Ganse, U., Osmane, A., Johlander, A., Battarbee, M., Grandin, M., Pfau-Kempf, Y., Turc, L., and Palmroth, M.: Resolution dependence of magnetosheath waves in global hybrid-Vlasov simulations, *Ann. Geophys.*, 38, 1283–1298, <https://doi.org/10.5194/angeo-38-1283-2020>, 2020.
- Fang, X., Randall, C. E., Lummerzheim, D., Wang, W., Lu, G., Solomon, S. C., and Frahm, R. A.: Parameterization of monoenergetic electron impact ionization, *Geophys. Res. Lett.*, 37, L22106, <https://doi.org/10.1029/2010GL045406>, 2010.
- Funke, B., López-Puertas, M., Stiller, G. P., and von Clarmann, T.: Mesospheric and stratospheric NO_y produced by energetic particle precipitation during 2002–2012, *J. Geophys. Res.*, 119, 4429–4446, <https://doi.org/10.1002/2013JD021404>, 2014.
- Ganse, U., Koskela, T., Battarbee, M., Pfau-Kempf, Y., Papadakis, K., Alho, M., Bussov, M., Cozzani, G., Dubart, M., George, H., Gordeev, E., Grandin, M., Horaites, K., Suni, J., Tervus, V., Kebede, F. T., Turc, L., Zhou, H., and Palmroth, M.: Enabling technology for global 3D + 3V hybrid-Vlasov simulations of near-Earth space, *Phys. Plasmas*, 30, 042902, <https://doi.org/10.1063/5.0134387>, 2023.
- Gottelman, A., Mills, M. J., Kinnison, D. E. and Garcia, R. R., Smith, A. K., Marsh, D. R., Tilmes, S., Vitt, F., Bardeen, C. G., McInerney, J., Liu, H.-L., Solomon, S. C., Polvani, L. M., Emmons, L. K., Lamarque, J.-F., Richter, J. H., Glanville, A. S., Bacmeister, J. T., Phillips, A. S., Neale, R. B., Simpson, I. R., DuVivier, A. K., Hodzic, A., and Randel, W. J.: The whole atmosphere community climate model version 6 (WACCM6), *J. Geophys. Res.-Atmos.*, 124, 12380–12403, <https://doi.org/10.1029/2019JD030943>, 2019.
- Grandin, M.: eVlasior 3D run (eGI-1506) with DMSP correction: Precipitating electron differential number flux data, FMI research data repository METIS [data set], <https://doi.org/10.57707/FMI-B2SHARE.79A154A9959347D0829B0AB2E145499C>, 2024.
- Grandin, M., Aikio, A. T., and Kozlovsky, A.: Properties and Geoeffectiveness of Solar Wind High-Speed Streams and Stream Interaction Regions During Solar Cycles 23 and 24, *J. Geophys. Res.-Space*, 124, 3871–3892, <https://doi.org/10.1029/2018JA026396>, 2019a.
- Grandin, M., Battarbee, M., Osmane, A., Ganse, U., Pfau-Kempf, Y., Turc, L., Brito, T., Koskela, T., Dubart, M., and Palmroth, M.: Hybrid-Vlasov modelling of nightside auroral proton precipitation during southward interplanetary magnetic field conditions, *Ann. Geophys.*, 37, 791–806, <https://doi.org/10.5194/angeo-37-791-2019>, 2019b.
- Grandin, M., Turc, L., Battarbee, M., Ganse, U., Johlander, A., Pfau-Kempf, Y., Dubart, M., and Palmroth, M.: Hybrid-Vlasov simulation of auroral proton precipitation in the cusps: Comparison of northward and southward interplanetary magnetic field driving, *J. Space Weather Spac.*, 10, 51, <https://doi.org/10.1051/swsc/2020053>, 2020.
- Grandin, M., Luttikhuis, T., Battarbee, M., Cozzani, G., Zhou, H., Turc, L., Pfau-Kempf, Y., George, H., Horaites, K., Gordeev, E., Ganse, U., Papadakis, K., Alho, M., Tesema, F., Suni, J., Dubart, M., Tervus, V., and Palmroth, M.: First 3D hybrid-Vlasov global simulation of auroral proton precipitation and comparison with satellite observations, *J. Space Weather Spac.*, 13, 20, <https://doi.org/10.1051/swsc/2023017>, 2023.
- Grandin, M., Connor, H. K., Hoilijoki, S., Battarbee, M., Pfau-Kempf, Y., Ganse, U., Papadakis, K., and Palmroth, M.: Hybrid-Vlasov simulation of soft X-ray emissions at the Earth's day-side magnetospheric boundaries, *Earth Planet. Phys.*, 8, 70–88, <https://doi.org/10.26464/epp2023052>, 2024.
- Häkkinen, T.: hakkila/wacmm_iprmlt: IPRMLT, Zenodo [code], <https://doi.org/10.5281/zenodo.11397846>, 2024.
- Häkkinen, T. and Szeged, M.: WACCM simulation data (VLAS, REF) for the manuscript “Atmospheric Nitrogen Oxide response to electron forcing from a 6D magnetospheric hybrid-kinetic simulation” by T. Häkkinen et al., FMI research data repository METIS [data set], <https://doi.org/10.57707/FMI-B2SHARE.F5ADB0738724045803A117F8B00F016>, 2024a.
- Häkkinen, T. and Szeged, M.: WACCM simulation data (KP0-KP5) in the Northern hemisphere for the manuscript “Atmospheric Nitrogen Oxide response to electron forcing from a 6D magnetospheric hybrid-kinetic simulation” by T. Häkkinen et al., FMI research data repository METIS [data set], <https://doi.org/10.57707/FMI-B2SHARE.684501221FC94E1691108FFE39934031>, 2024b.
- Häkkinen, T. and Szeged, M.: WACCM simulation data (KP0-KP5) in the Southern hemisphere for the manuscript “Atmospheric Nitrogen Oxide response to electron forcing from a 6D magnetospheric hybrid-kinetic simulation” by T. Häkkinen et al., FMI research data repository METIS [data set], <https://doi.org/10.57707/FMI-B2SHARE.D1B034EB72924FC2A7BE0BD0FFE1EBE3>, 2024c.
- Hardy, D. A., Holeman, E. G., Burke, W. J., Gentile, L. C., and Bounar, K. H.: Probability distributions of electron precipitation at high magnetic latitudes, *J. Geophys. Res.-Space*, 113, A06305, <https://doi.org/10.1029/2007JA012746>, 2008.
- Hendrickx, K., Megner, L., Marsh, D. R., and Smith-Johnsen, S. M.: Production and transport mechanisms of NO in the polar upper mesosphere and lower thermosphere in observations and models, *Atmos. Chem. Phys.*, 18, 9075–9089, <https://doi.org/10.5194/acp-18-9075-2018>, 2018.
- Horaites, K., Rintamäki, E., Zaitsev, I., Turc, L., Grandin, M., Cozzani, G., Zhou, H., Alho, M., Suni, J., Kebede, F., Gordeev, E., George, H., Battarbee, M., Bussov, M., Dubart, M., Ganse, U., Papadakis, K., Pfau-Kempf, Y., Tervus, V., and Palmroth, M.: Magnetospheric Response to a Pressure Pulse in a Three-Dimensional Hybrid-Vlasov Simulation, *J. Geophys. Res.-Space*, 128, e2023JA031374, <https://doi.org/10.1029/2023JA031374>, 2023.
- Kotipalo, L., Battarbee, M., Pfau-Kempf, Y., and Palmroth, M.: Physics-motivated Cell-octree Adaptive Mesh Refinement in the Vlasior 5.3 Global Hybrid-Vlasov Code, *EGU sphere*, 2024, 1–24, <https://doi.org/10.5194/egusphere-2024-301>, 2024.

- Manney, G. L., Krüger, K., Pawson, S., Minschwaner, K., Schwartz, M. J., Daffer, W. H., Livesey, N. J., Mlynarczyk, M. G., Remsberg, E. E., Russell, J. M., and Waters, J. W.: The evolution of the stratopause during the 2006 major warming: Satellite data and assimilated meteorological analyses, *J. Geophys. Res.*, 113, D11115, <https://doi.org/10.1029/2007JD009097>, 2008.
- Marsh, D. R., Solomon, S. C., and Reynolds, A. E.: Empirical model of nitric oxide in the lower thermosphere, *J. Geophys. Res.-Space*, 109, A07301, <https://doi.org/10.1029/2003JA010199>, 2004.
- Marsh, D. R., Garcia, R. R., Kinnison, D. E., Boville, B. A., Sassi, F., Solomon, S. C., and Matthes, K.: Modeling the whole atmosphere response to solar cycle changes in radiative and geomagnetic forcing, *J. Geophys. Res.-Atmos.*, 112, D23306, <https://doi.org/10.1029/2006JD008306>, 2007.
- Marsh, D. R., Mills, M., Kinnison, D., Lamarque, J.-F., Calvo, N., and Polvani, L.: Climate change from 1850 to 2005 simulated in CESM1(WACCM), *J. Climate*, 26, 7372–7391, <https://doi.org/10.1175/JCLI-D-12-00558.1>, 2013.
- Matthes, K., Funke, B., Andersson, M. E., Barnard, L., Beer, J., Charbonneau, P., Clilverd, M. A., Dudok de Wit, T., Haberger, M., Hendry, A., Jackman, C. H., Kretschmar, M., Kruschke, T., Kunze, M., Langematz, U., Marsh, D. R., Maycock, A., Miosios, S., Rodger, C. J., Scaife, A. A., Seppälä, A., Shangguan, M., Sinnhuber, M., Tourpali, K., Usoskin, I., van de Kamp, M., Verronen, P. T., and Versick, S.: Solar Forcing for CMIP6, *Geosci. Model Dev.*, 10, 2247–2302, <https://doi.org/10.5194/gmd-10-2247-2017>, 2017.
- Meraner, K. and Schmidt, H.: Transport of nitrogen oxides through the winter mesopause in HAMMONIA, *J. Geophys. Res.*, 121, 2556–2570, <https://doi.org/10.1002/2015JD024136>, 2016.
- Mlynarczyk, M. G., Martin-Torres, F. J., Crowley, G., Kratz, D. P., Funke, B., Lu, G., Lopez-Puertas, M., Russell, J. M., Kozyra, J., Mertens, C., Sharma, R., Gordley, L., Picard, R., Winick, J., and Paxton, L.: Energy transport in the thermosphere during the solar storms of April 2002, *J. Geophys. Res.*, 110, A12S25, <https://doi.org/10.1029/2005JA011141>, 2005.
- Molod, A., Takacs, L., Suarez, M., and Bacmeister, J.: Development of the GEOS-5 atmospheric general circulation model: Evolution from MERRA to MERRA2, *Geosci. Model Dev.*, 8, 1339–1356, <https://doi.org/10.5194/gmd-8-1339-2015>, 2015.
- Nesse Tyssøy, H., Sinnhuber, M., Asikainen, T., Bender, S., Clilverd, M. A., Funke, B., van de Kamp, M., Pettit, J. M., Randall, C. E., Reddmann, T., Rodger, C. J., Rozanov, E., Smith-Johnsen, C., Sukhodolov, T., Verronen, P. T., Wising, J. M., and Yakovchuk, O.: HEPPA III Intercomparison Experiment on Electron Precipitation Impacts: 1. Estimated Ionization Rates During a Geomagnetic Active Period in April 2010, *J. Geophys. Res.-Space*, 127, e2021JA029128, <https://doi.org/10.1029/2021JA029128>, 2022.
- Newell, P. T., Feldstein, Y. I., Galperin, Y. I., and Meng, C.-I.: Morphology of nighttime precipitation, *J. Geophys. Res.-Space*, 101, 10737–10748, <https://doi.org/10.1029/95JA03516>, 1996.
- Palmroth, M., Janhunen, P., Germany, G., Lummerzheim, D., Liou, K., Baker, D. N., Barth, C., Weatherwax, A. T., and Watermann, J.: Precipitation and total power consumption in the ionosphere: Global MHD simulation results compared with Polar and SNOE observations, *Ann. Geophys.*, 24, 861–872, <https://doi.org/10.5194/angeo-24-861-2006>, 2006.
- Palmroth, M., Hoilijoki, S., Juusola, L., Pulkkinen, T. I., Hietala, H., Pfau-Kempf, Y., Ganse, U., von Alfthan, S., Vainio, R., and Hesse, M.: Tail reconnection in the global magnetospheric context: Vlasiator first results, *Ann. Geophys.*, 35, 1269–1274, <https://doi.org/10.5194/angeo-35-1269-2017>, 2017.
- Palmroth, M., Ganse, U., Pfau-Kempf, Y., Battarbee, M., Turc, L., Brito, T., Grandin, M., Hoilijoki, S., Sandroos, A., and von Alfthan, S.: Vlasov methods in space physics and astrophysics, *Living Rev. Comput. Astrophys.*, 4, 1, <https://doi.org/10.1007/s41115-018-0003-2>, 2018.
- Palmroth, M., Grandin, M., Sarris, T., Doornbos, E., Tourgaidis, S., Aikio, A., Buchert, S., Clilverd, M. A., Dandouras, I., Heelis, R., Hoffmann, A., Ivchenko, N., Kervalishvili, G., Knudsen, D. J., Kotova, A., Liu, H.-L., Malaspina, D. M., March, G., Marchaudon, A., Marghitu, O., Matsuo, T., Miloch, W. J., Moretto-Jørgensen, T., Mpouloukidis, D., Olsen, N., Papadakis, K., Pfaff, R., Pirnaris, P., Siemes, C., Stolle, C., Suni, J., van den IJssel, J., Verronen, P. T., Visser, P., and Yamauchi, M.: Lower-thermosphere–ionosphere (LTI) quantities: current status of measuring techniques and models, *Ann. Geophys.*, 39, 189–237, <https://doi.org/10.5194/angeo-39-189-2021>, 2021.
- Palmroth, M., Pulkkinen, T. I., Ganse, U., Pfau-Kempf, Y., Koskela, T., Zaitsev, I., Alho, M., Cozzani, G., Turc, L., Battarbee, M., Dubart, M., George, H., Gordeev, E., Grandin, M., Horaites, K., Osmane, A., Papadakis, K., Suni, J., Tarvus, V., Zhou, H., and Nakamura, R.: Magnetotail plasma eruptions driven by magnetic reconnection and kinetic instabilities, *Nat. Geosci.*, 16, 570–576, <https://doi.org/10.1038/s41561-023-01206-2>, 2023.
- Pfau-Kempf, Y., von Alfthan, S., Ganse, U., Sandroos, A., Battarbee, M., Koskela, T., Otto, I., Ilja, Papadakis, K., Kotipalo, L., Zhou, H., Grandin, M., Pokhotelov, D., and Alho, M.: fmihpc/vlasiator: eVlasiator 6D pre-release, Zenodo [code], <https://doi.org/10.5281/zenodo.6642177>, 2022.
- Pfau-Kempf, Y., von Alfthan, S., Ganse, U., Battarbee, M., Kotipalo, L., Koskela, T., Ilja, Sandroos, A., Papadakis, K., Alho, M., Zhou, H., Palmu, M., Grandin, M., Suni, J., Pokhotelov, D., and kostahoraites: fmihpc/vlasiator: Vlasiator 5.3, Zenodo [code], <https://doi.org/10.5281/zenodo.10600112>, 2024.
- Picone, J. M., Hedin, A. E., Drob, D. P., and Aikin, A. C.: NRLMSISE-00 empirical model of the atmosphere: Statistical comparisons and scientific issues, *J. Geophys. Res.*, 107, 1468, <https://doi.org/10.1029/2002JA009430>, 2002.
- Randall, C. E., Harvey, V. L., Siskind, D. E., France, J., Bernath, P. F., Boone, C. D., and Walker, K. A.: NO_x descent in the Arctic middle atmosphere in early 2009, *Geophys. Res. Lett.*, 36, L18811, <https://doi.org/10.1029/2009GL039706>, 2009.
- Randall, C. E., Harvey, V. L., Holt, L. A., Marsh, D. R., Kinnison, D., Funke, B., and Bernath, P. F.: Simulation of energetic particle precipitation effects during the 2003–2004 Arctic winter, *J. Geophys. Res.-Space*, 120, 5035–5048, <https://doi.org/10.1002/2015JA021196>, 2015.
- Redmon, R. J., Denig, W. F., Kilcommons, L. M., and Knipp, D. J.: New DMSP database of precipitating auroral electrons and ions, *J. Geophys. Res.-Space*, 122, 9056–9067, <https://doi.org/10.1002/2016JA023339>, 2017.
- Roble, P. B. and Ridley, E. C.: An auroral model for the NCAR thermospheric general circulation model (TGCM), *Ann. Geophys.*, 5, 369–382, 1987.

- Sarris, T., Palmroth, M., Aikio, A., Buchert, S. C., Clemmons, J., Clilverd, M., Dandouras, I., Doornbos, E., Goodwin, L. V., Grandin, M., Heelis, R., Ivchenko, N., Moretto-Jørgensen, T., Kervalishvili, G., Knudsen, D., Liu, H.-L., Lu, G., Malaspina, D. M., Marghitu, O., Maute, A., Miloch, W. J., Olsen, N., Pfaff, R., Stolle, C., Talaat, E., Thayer, J., Tourgaidis, S., Verronen, P. T., and Yamauchi, M.: Plasma-Neutral Interactions in the Lower Thermosphere-Ionosphere: The need for in situ measurements to address focused questions, *Front. Astron. Space Sci.*, 9, 1063190, <https://doi.org/10.3389/fspas.2022.1063190>, 2023.
- Seppälä, A., Clilverd, M. A., Beharrell, M. J., Rodger, C. J., Verronen, P. T., Andersson, M. E., and Newnham, D. A.: Substorm-induced energetic electron precipitation: Impact on atmospheric chemistry, *Geophys. Res. Lett.*, 42, 8172–8176, <https://doi.org/10.1002/2015GL065523>, 2015.
- Sinnhuber, M., Kazeminejad, S., and Wissing, J. M.: Interannual variation of NO_x from the lower thermosphere to the upper stratosphere in the years 1991–2005, *J. Geophys. Res.*, 116, A02312, <https://doi.org/10.1029/2010JA015825>, 2011.
- Sinnhuber, M., Tyssøy, H. N., Asikainen, T., Bender, S., Funke, B., Hendrickx, K., Pettit, J., Reddmann, T., Rozanov, E., Schmidt, H., Smith-Johnsen, C., Sukhodolov, T., Szeląg, M. E., van de Kamp, M., Verronen, P. T., Wissing, J. M., and Yakovchuk, O.: Heppa III intercomparison experiment on medium-energy electrons, part II: Model-measurement intercomparison of nitric oxide (NO) during a geomagnetic storm in April 2010, *J. Geophys. Res.-Space*, 127, e2021JA029466, <https://doi.org/10.1029/2021JA029466>, 2021.
- Smith-Johnsen, C., Marsh, D. R., Smith, A. K., Tyssøy, H. N., and Maliniemi, V.: Mesospheric nitric oxide transport in WACCM, *J. Geophys. Res.-Space*, 127, e2021JA029998, <https://doi.org/10.1029/2021JA029998>, 2022.
- Szeląg, M. E., Marsh, D. R., Verronen, P. T., Seppälä, A., and Kalakoski, N.: Ozone impact from solar energetic particles cools the polar stratosphere, *Nat. Commun.*, 13, 6883, <https://doi.org/10.1038/s41467-022-34666-y>, 2022.
- Tian, S.: The geopack and Tsyganenko models in Python [software], v1.0.10, <https://pypi.org/project/geopack/> (last access: 11 April 2025), 2023.
- Tsyganenko, N. A.: A model of the near magnetosphere with a dawn-dusk asymmetry 1. Mathematical structure, *J. Geophys. Res.-Space*, 107, 1179, <https://doi.org/10.1029/2001JA000219>, 2002a.
- Tsyganenko, N. A.: A model of the near magnetosphere with a dawn-dusk asymmetry 2. Parameterization and fitting to observations, *J. Geophys. Res.-Space*, 107, 1176, <https://doi.org/10.1029/2001JA000220>, 2002b.
- Turunen, E., Kero, A., Verronen, P. T., Miyoshi, Y., Oyama, S., and Saito, S.: Mesospheric ozone destruction by high-energy electron precipitation associated with pulsating aurora, *J. Geophys. Res.-Atmos.*, 121, 11852–11861, <https://doi.org/10.1002/2016JD025015>, 2016.
- van de Kamp, M., Seppälä, A., Clilverd, M. A., Rodger, C. J., Verronen, P. T., and Whittaker, I. C.: A model providing long-term datasets of energetic electron precipitation during geomagnetic storms, *J. Geophys. Res.-Atmos.*, 121, 12520–12540, <https://doi.org/10.1002/2015JD024212>, 2016.
- Verronen, P. T. and Rodger, C. J.: Atmospheric ionization by energetic particle precipitation, Chap. 4.5, *Earth's climate response to a changing Sun*, edited by: Dudok de Wit, T., Ermolli, I., Haberreiter, M., Kambezidis, H., Lam, M. M., Lilienstein, J., Matthes, K., Mironova, I., Schmidt, H., Seppälä, A., Tanskanen, E., Tourpali, K., and Yair, Y., EDP Sciences <https://www.edpsciences.org> (last access: 11 April 2025), France, 261–266, ISBN 978-2-7598-1733-7, 2015.
- Verronen, P. T., Andersson, M. E., Marsh, D. R., Kovács, T., and Plane, J. M. C.: WACCM-D – Whole Atmosphere Community Climate Model with D-region ion chemistry, *J. Adv. Model. Earth Syst.*, 8, 954–975, <https://doi.org/10.1002/2015MS000592>, 2016.
- von Alfthan, S., Pokhotelov, D., Kempf, Y., Hoilijoki, S., Honkonen, I., Sandroos, A., and Palmroth, M.: Vlasior: First global hybrid-Vlasov simulations of Earth's foreshock and magnetosheath, *J. Atmos. Sol.-Terr. Phys.*, 120, 24–35, <https://doi.org/10.1016/j.jastp.2014.08.012>, 2014.
- Wissing, J. M. and Kallenrode, M.-B.: Atmospheric Ionization Module Osnabrück (AIMOS): A 3-D model to determine atmospheric ionization by energetic charged particles from different populations, *J. Geophys. Res.*, 114, A06104, <https://doi.org/10.1029/2008JA013884>, 2009.