



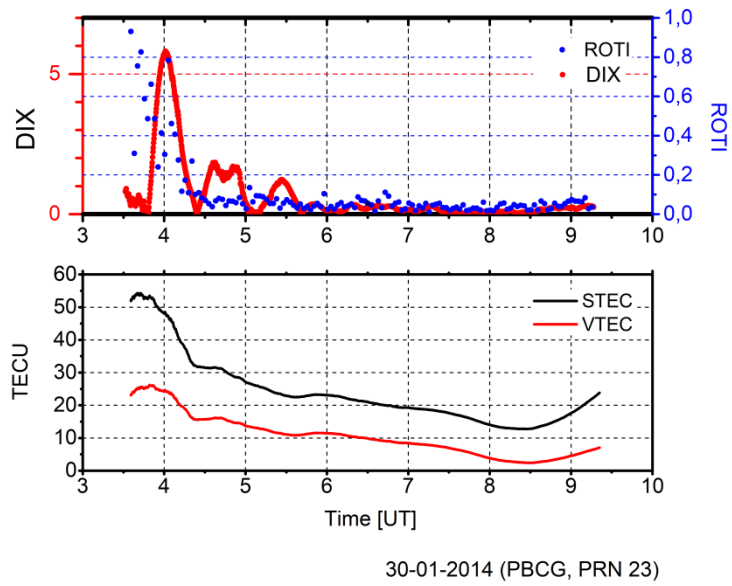
*Supplement of*

**Study of the equatorial and low-latitude total electron content response to plasma bubbles during solar cycle 24–25 over the Brazilian region using a Disturbance Ionosphere index**

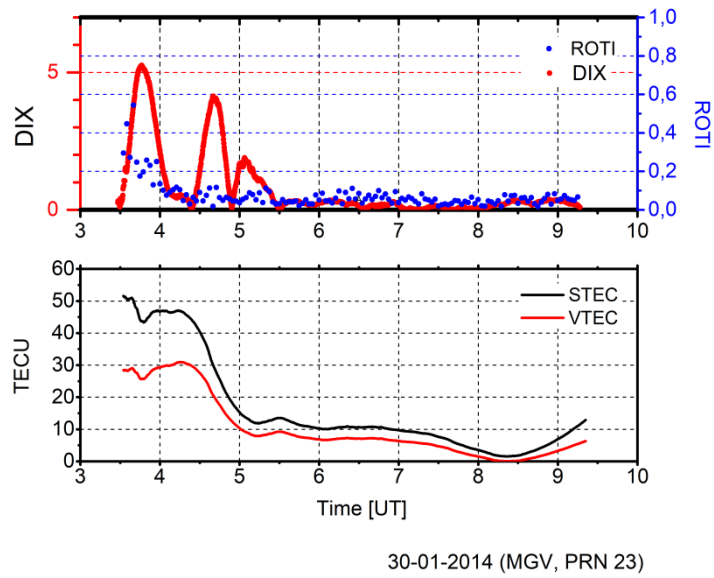
**Giorgio Arlan Silva Picanço et al.**

*Correspondence to:* Giorgio Arlan Silva Picanço ([giorgio.picanco@inpe.br](mailto:giorgio.picanco@inpe.br), [giorgiopicanco@gmail.com](mailto:giorgiopicanco@gmail.com))

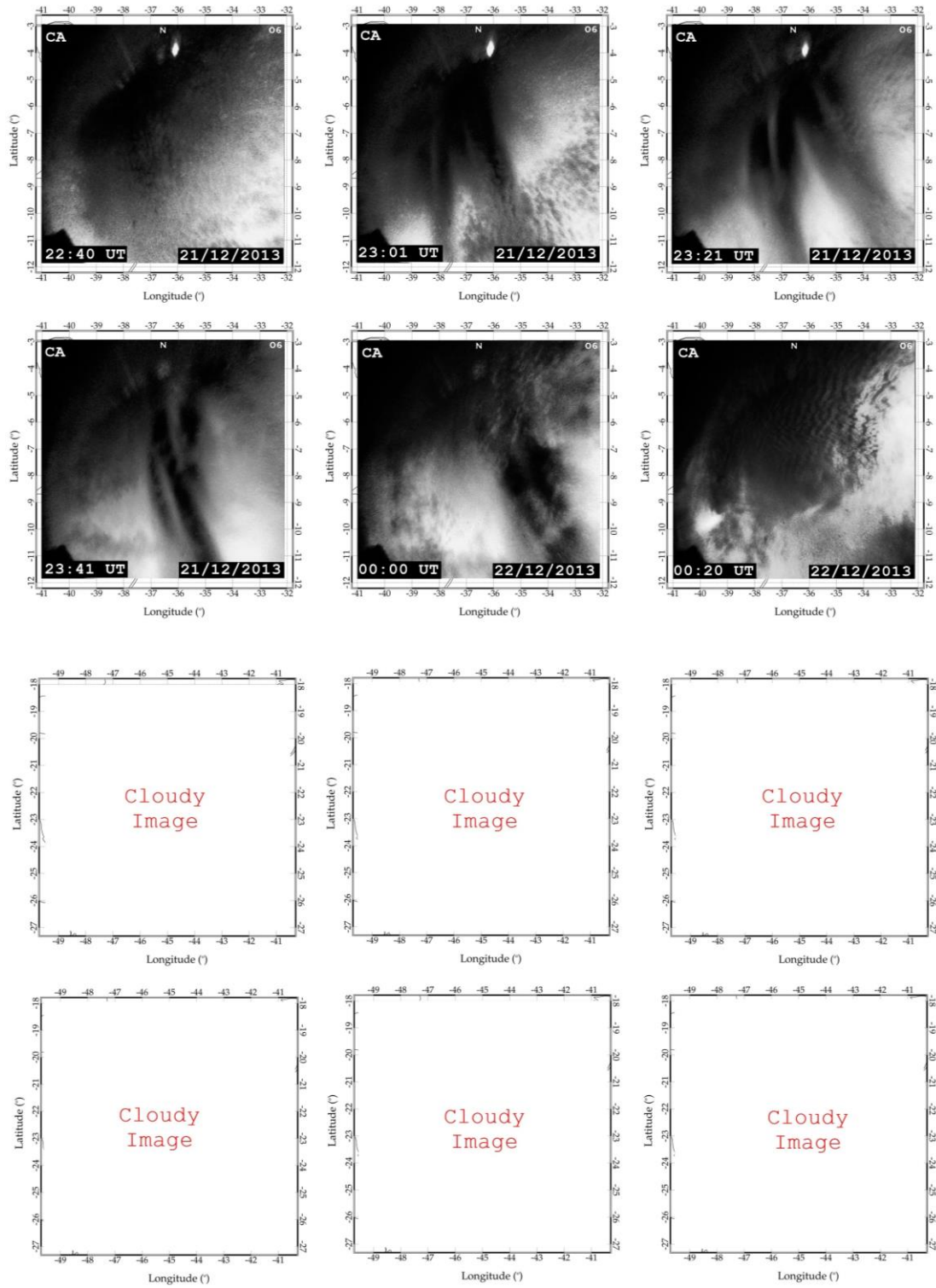
The copyright of individual parts of the supplement might differ from the article licence.



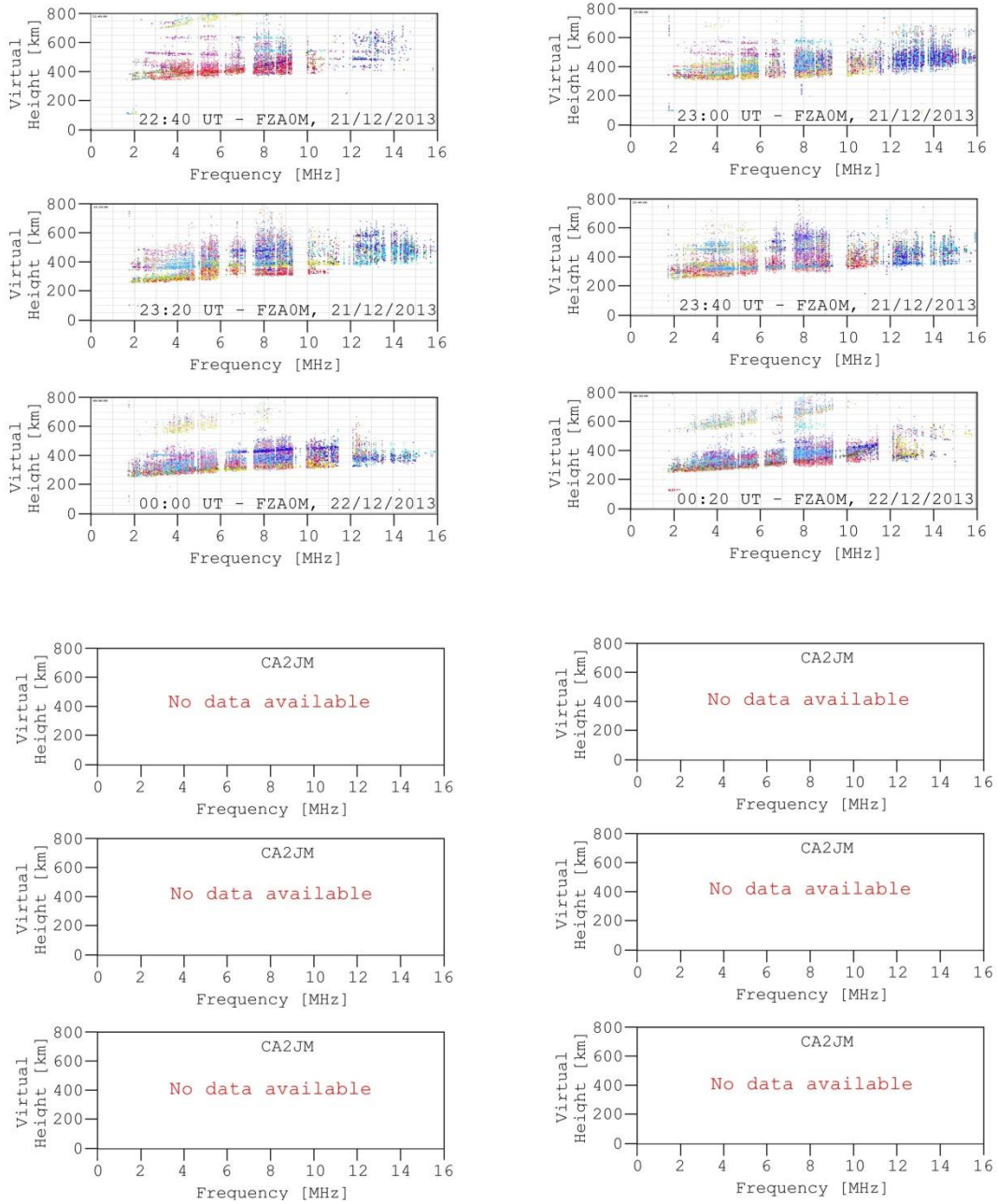
**Figure S1:** DIX and ROTI (upper panel) along with STEC and VTEC (lower panel) for PBCG (PRN 23) on 30 January 2014.



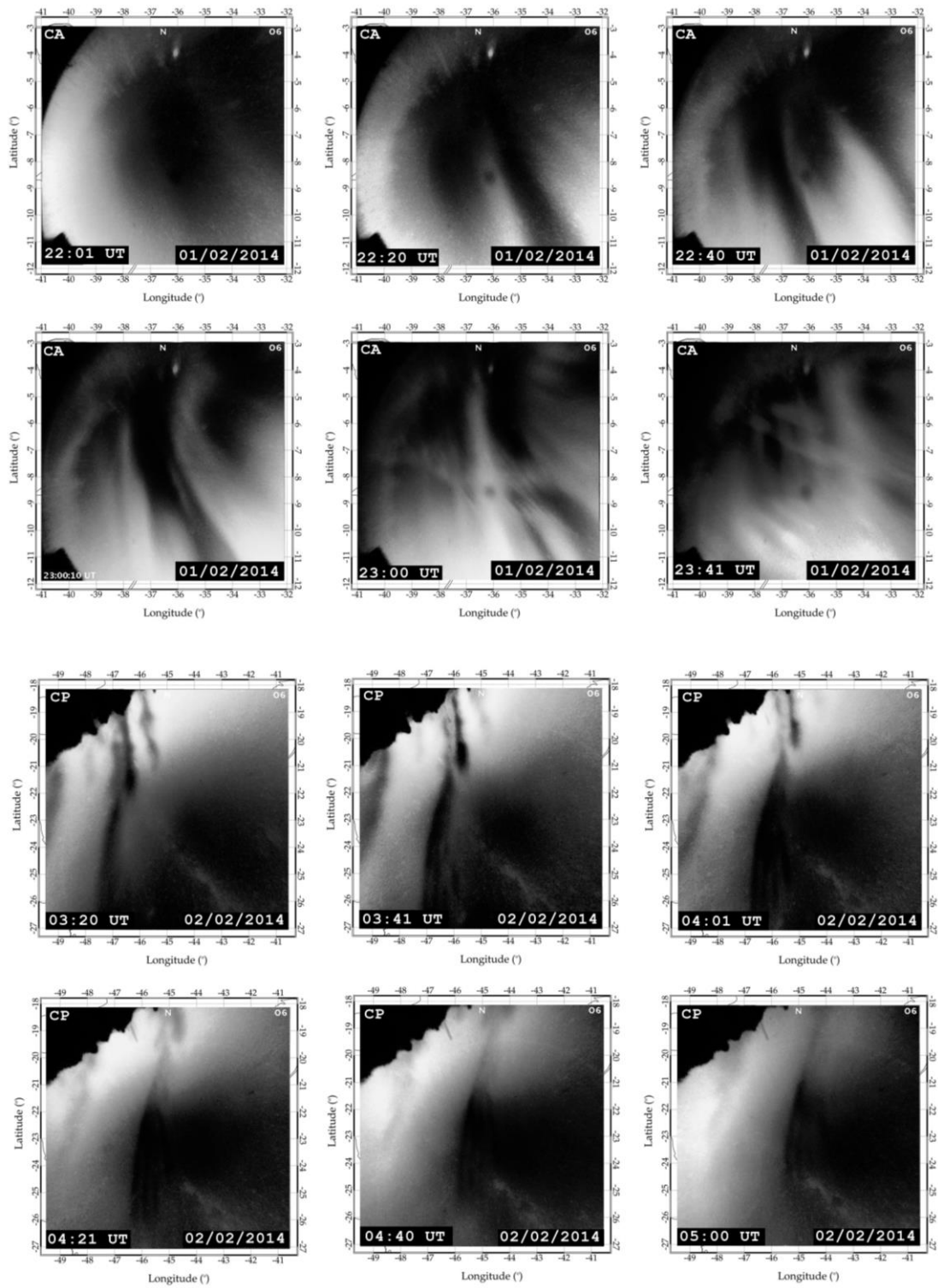
**Figure S2:** DIX and ROTI (upper panel) along with STEC and VTEC (lower panel) for MGV (PRN 23) on 30 January 2014.



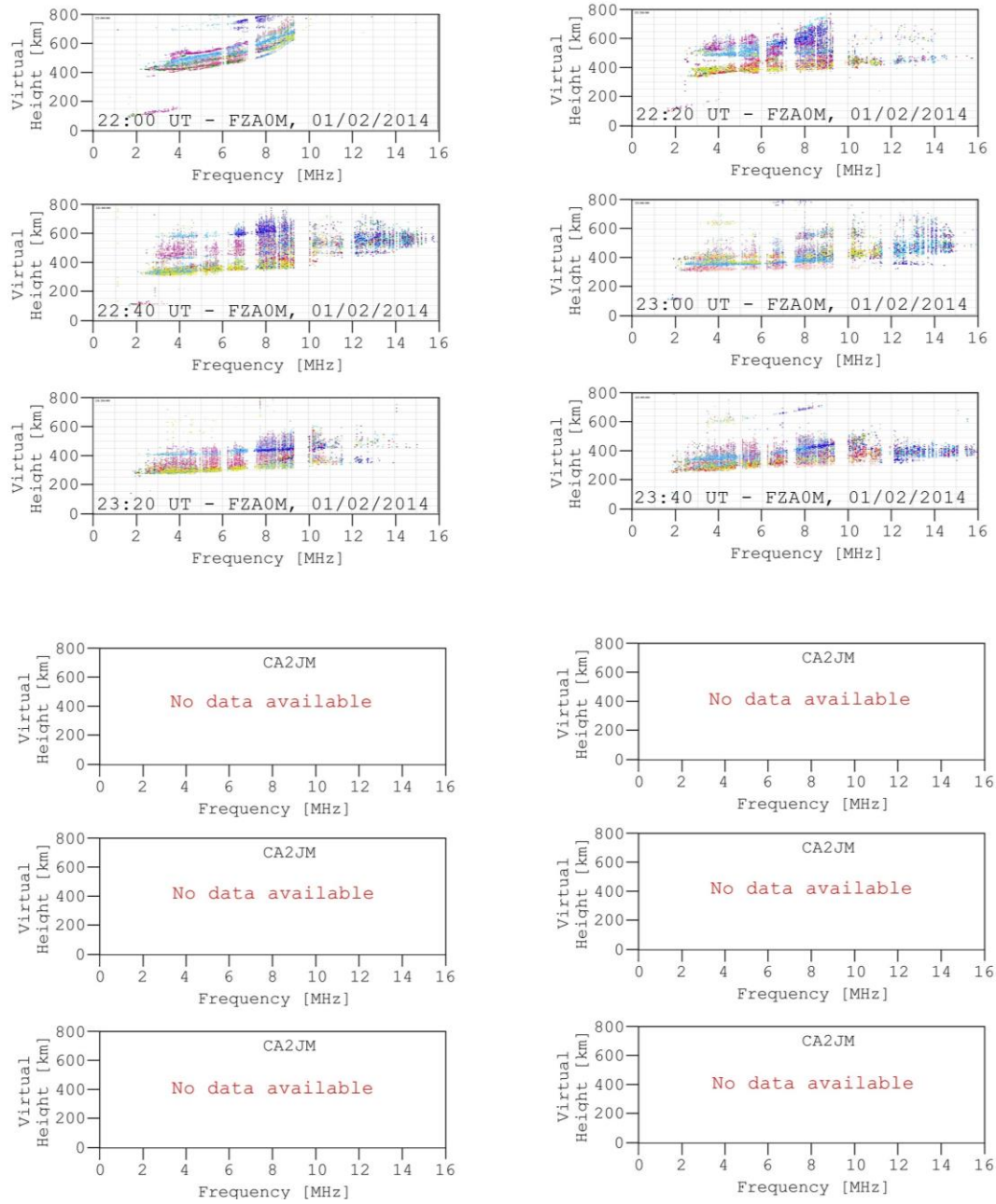
**Figure S3:** Expanded ASI image collection for the 2013 plasma bubble event.



**Figure S4:** Expanded IONO image collection for the 2013 plasma bubble event.

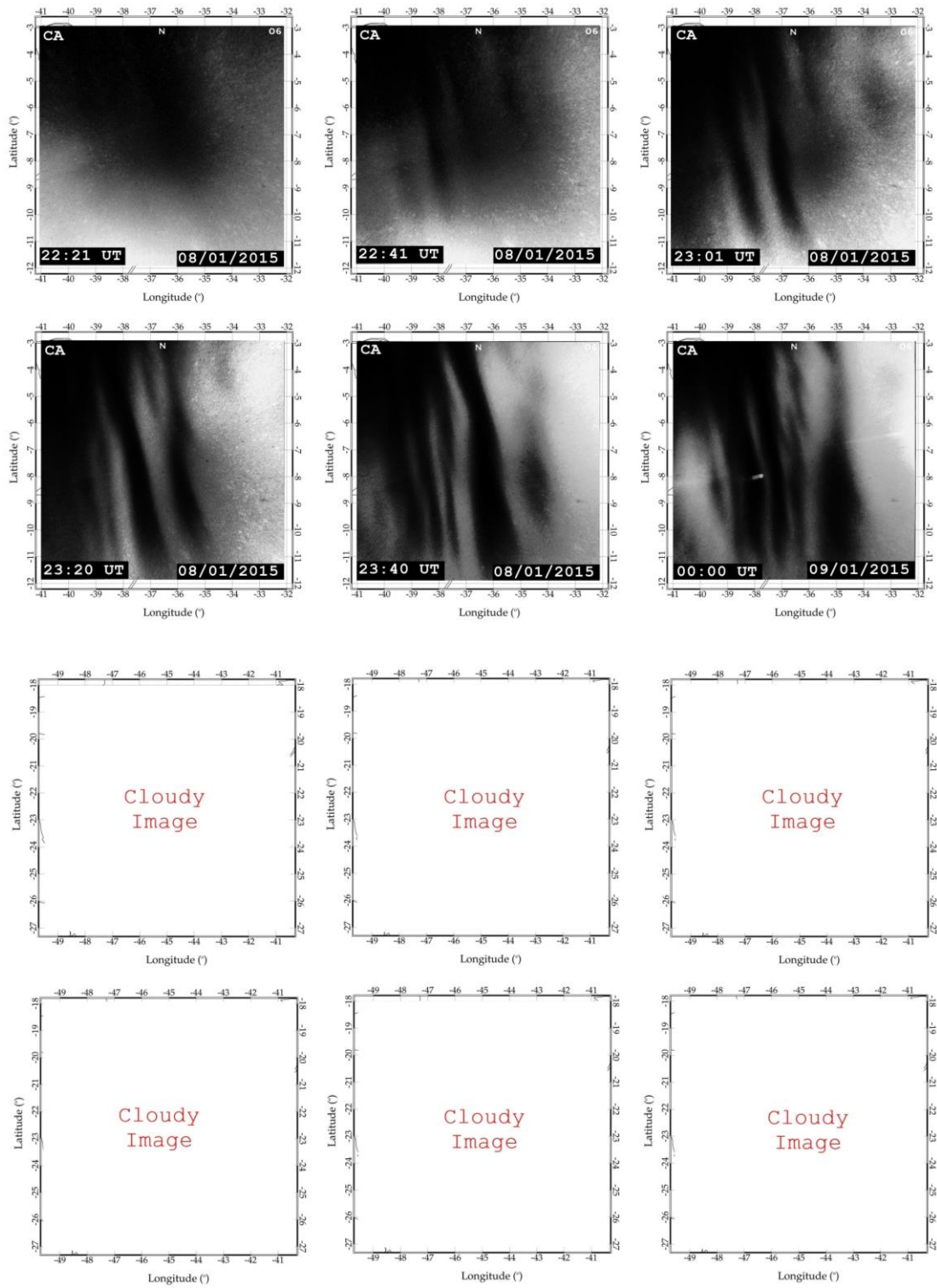


**Figure S5:** Expanded ASI image collection for the 2014 plasma bubble event.

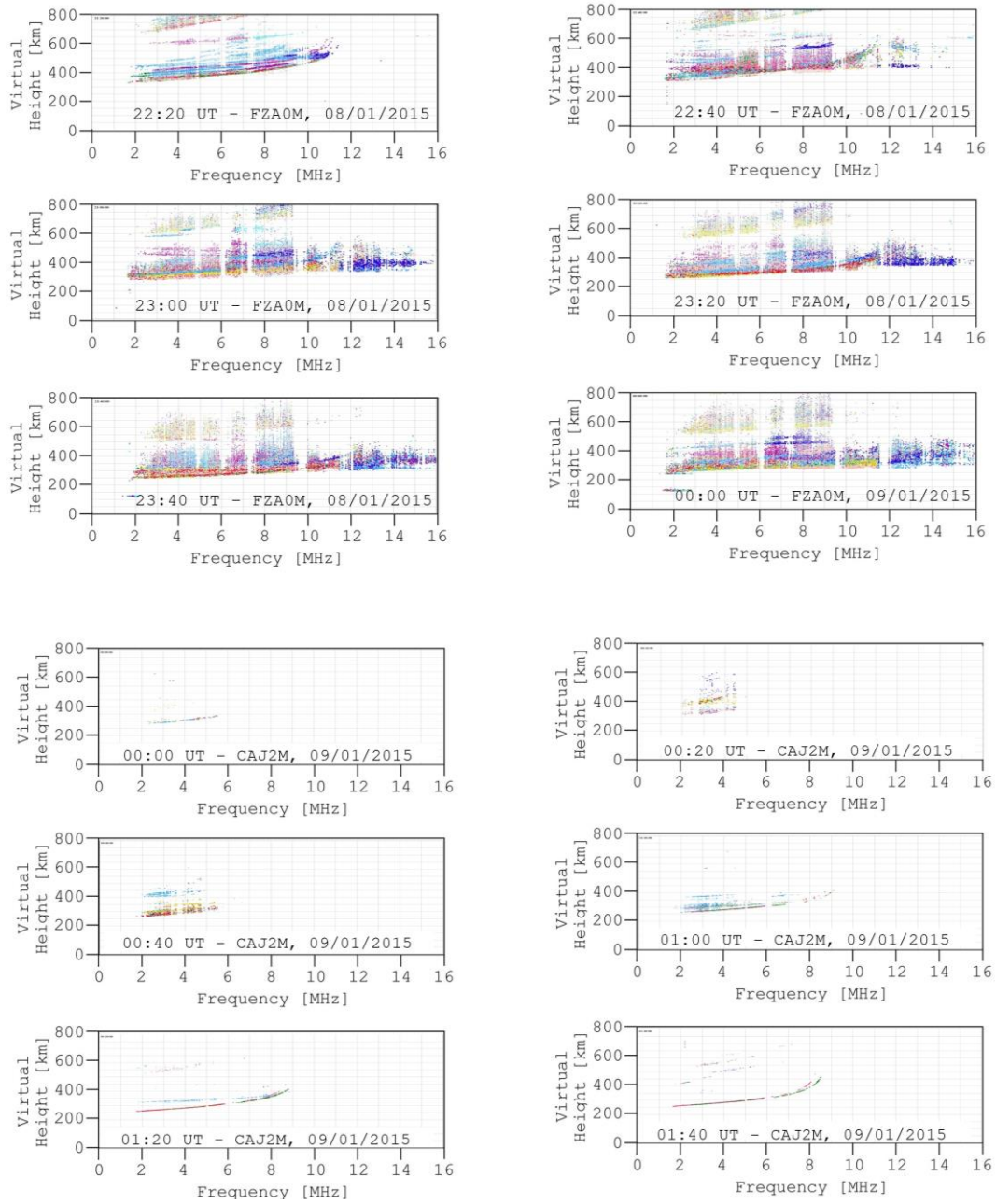


**Figure S6:** Expanded IONO image collection for the 2014 plasma bubble event.



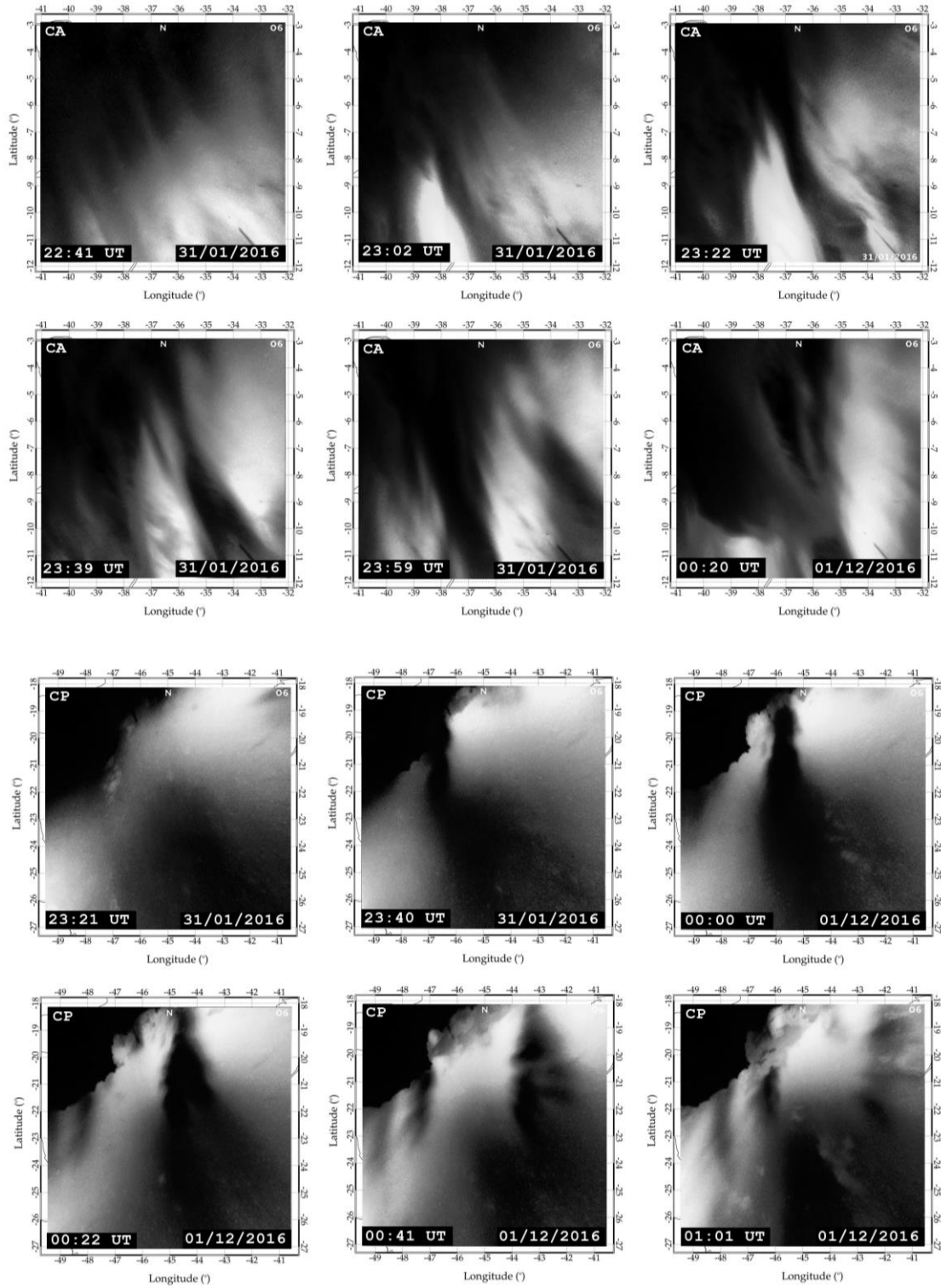


**Figure S7:** Expanded ASI image collection for the 2015 plasma bubble event.

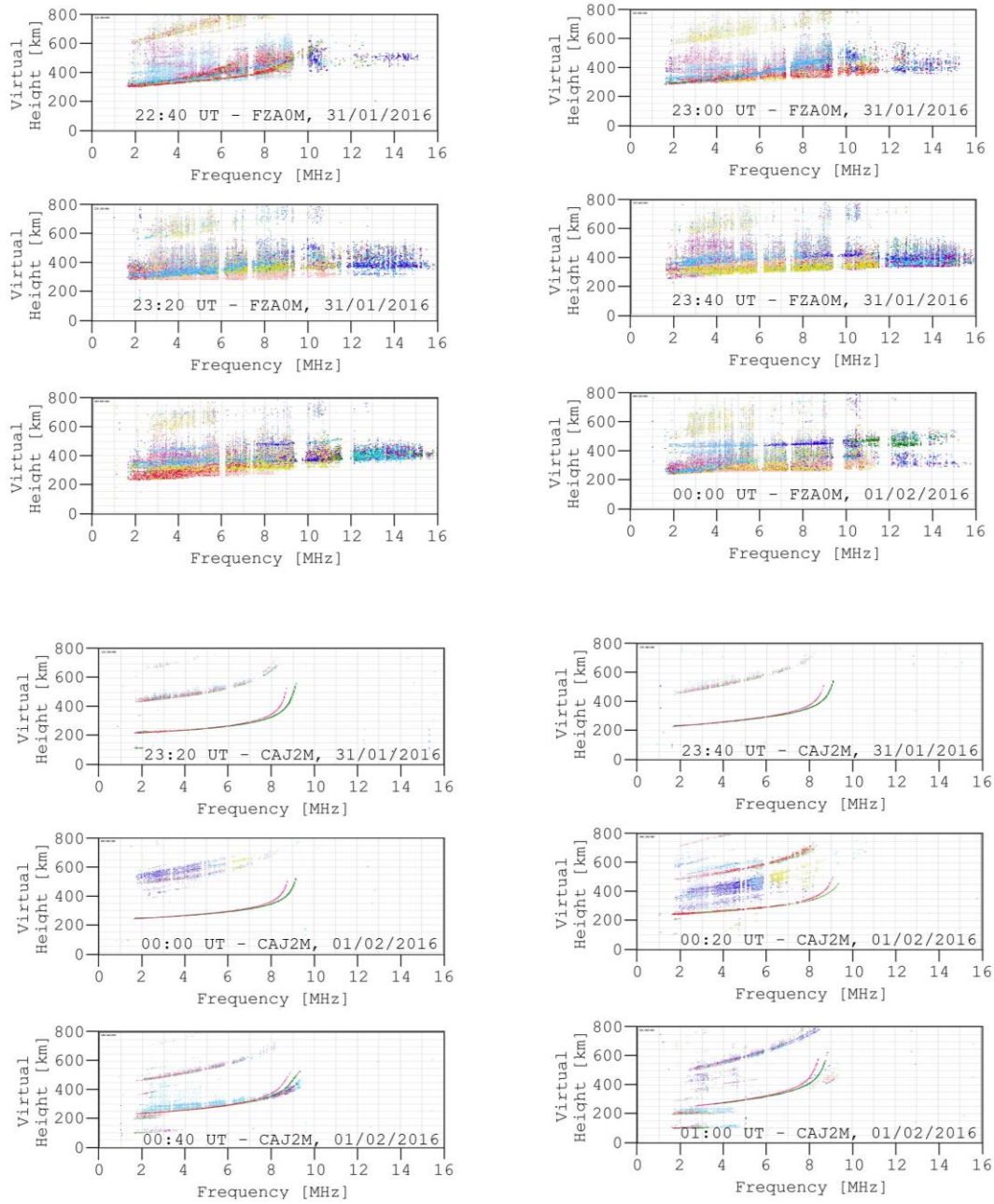


**Figure S8:** Expanded IONO image collection for the 2015 plasma bubble event.

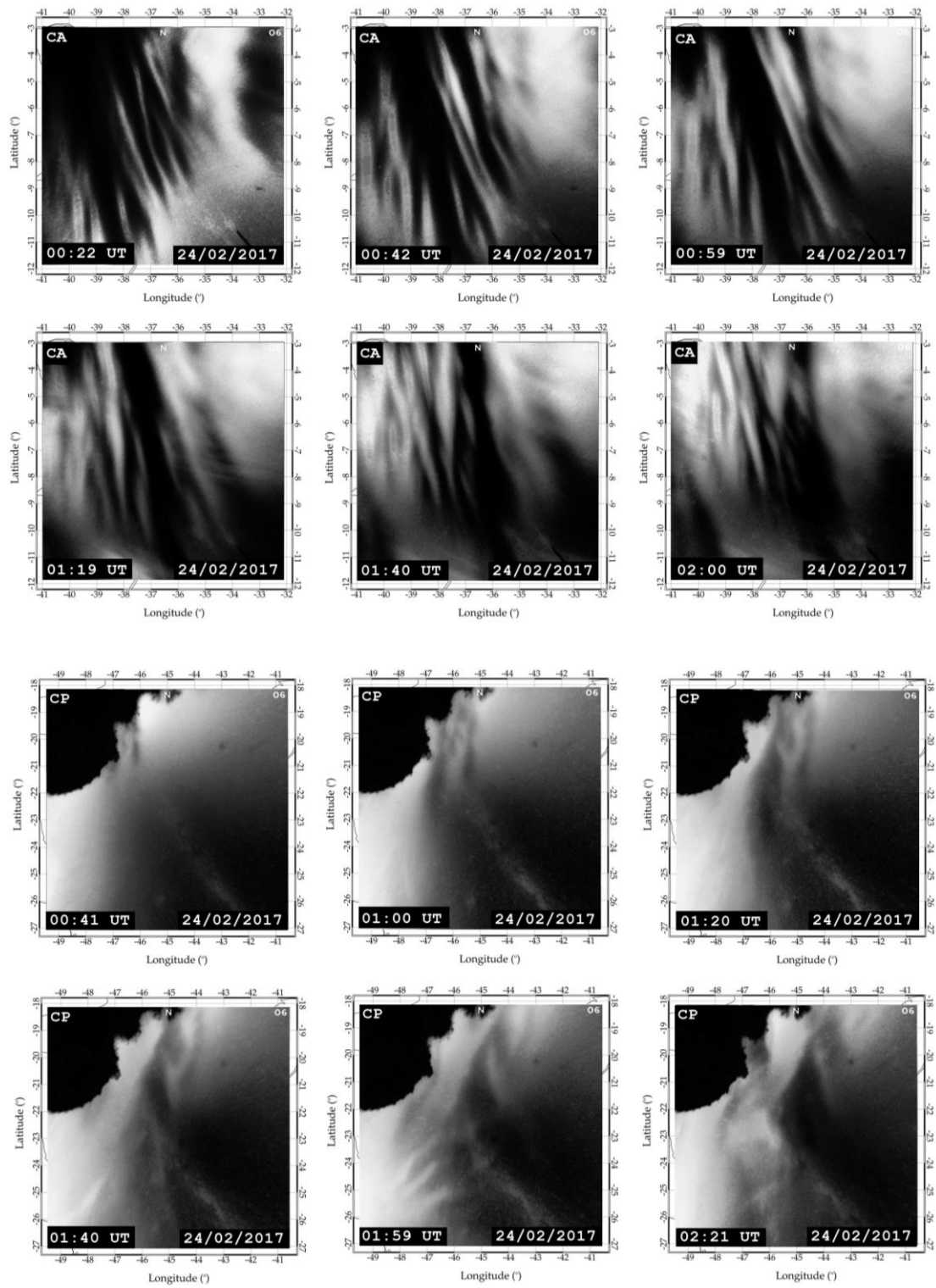




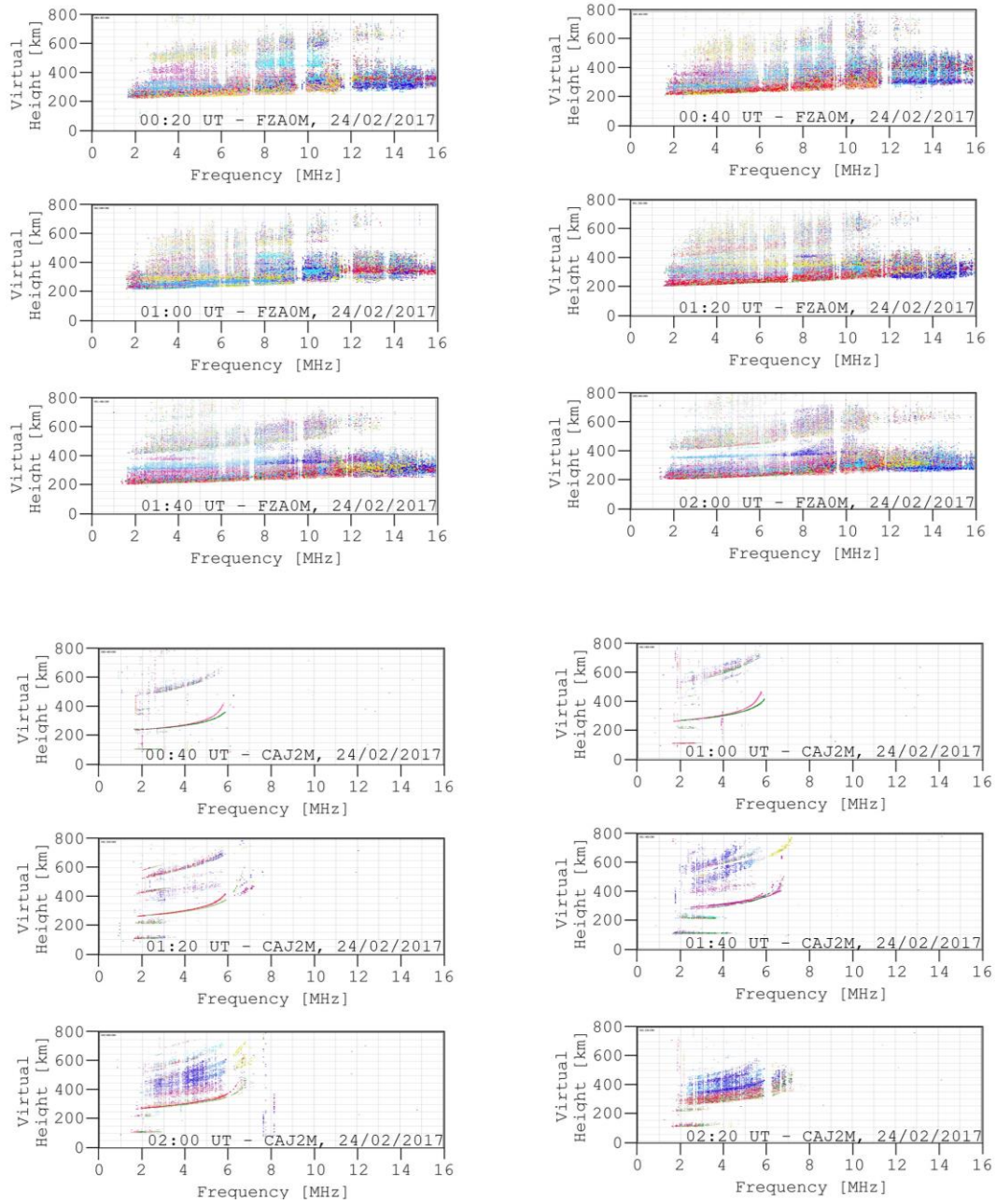
**Figure S9:** Expanded ASI image collection for the 2016 plasma bubble event.



**Figure S10:** Expanded IONO image collection for the 2016 plasma bubble event.

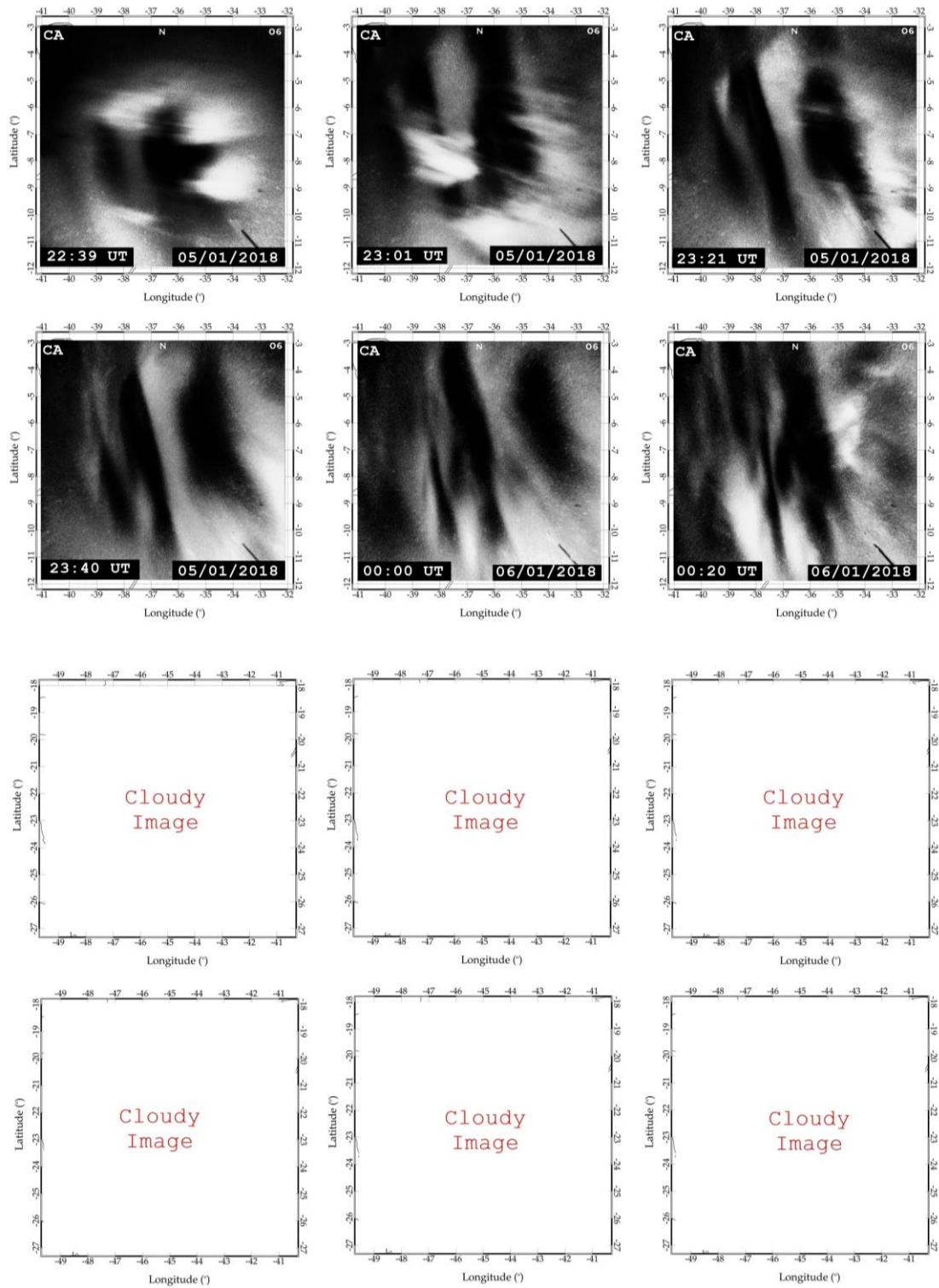


**Figure S11:** Expanded ASI image collection for the 2017 plasma bubble event.

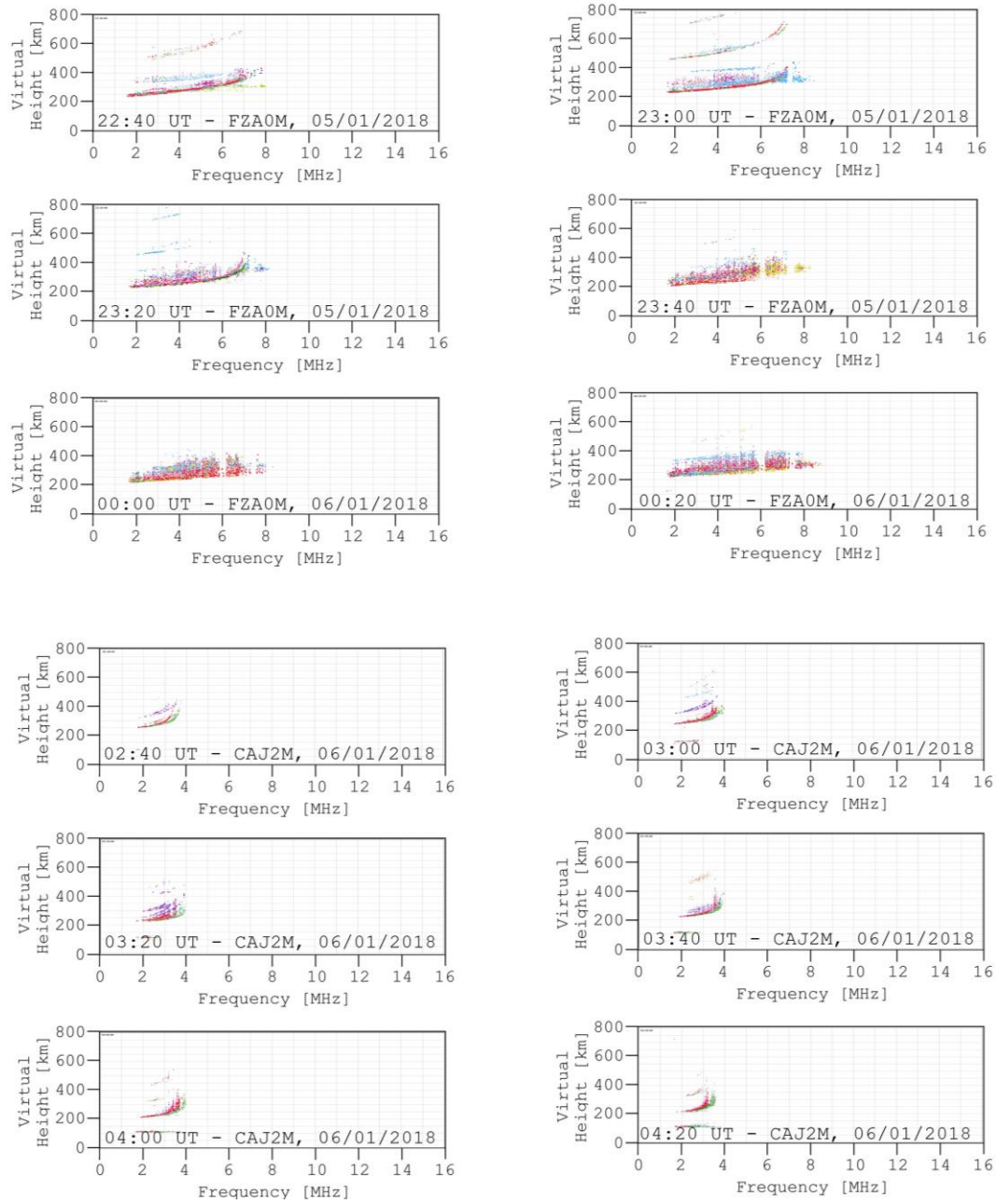


**Figure S12:** Expanded IONO image collection for the 2017 plasma bubble event.



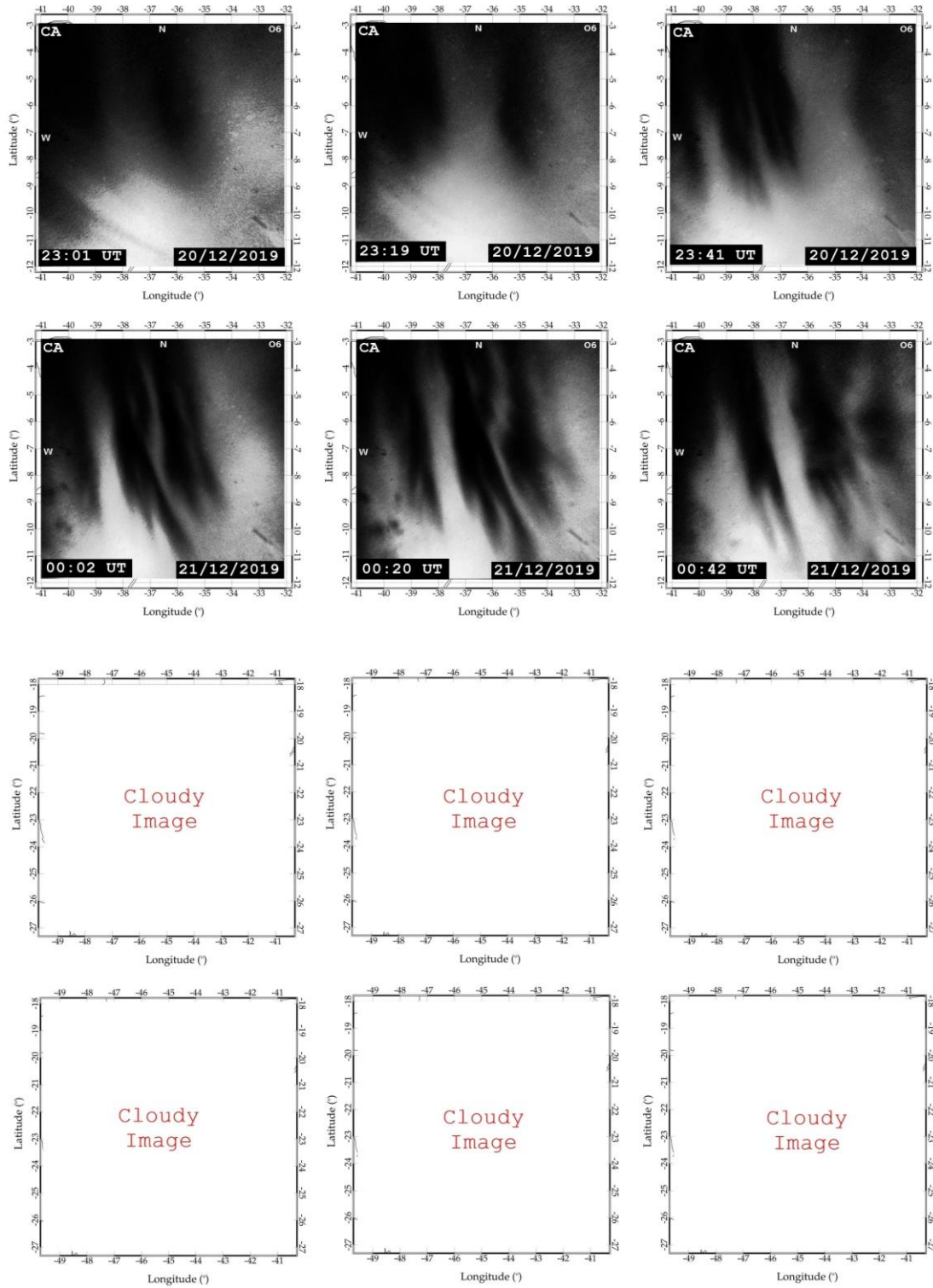


**Figure S13:** Expanded ASI image collection for the 2018 plasma bubble event.

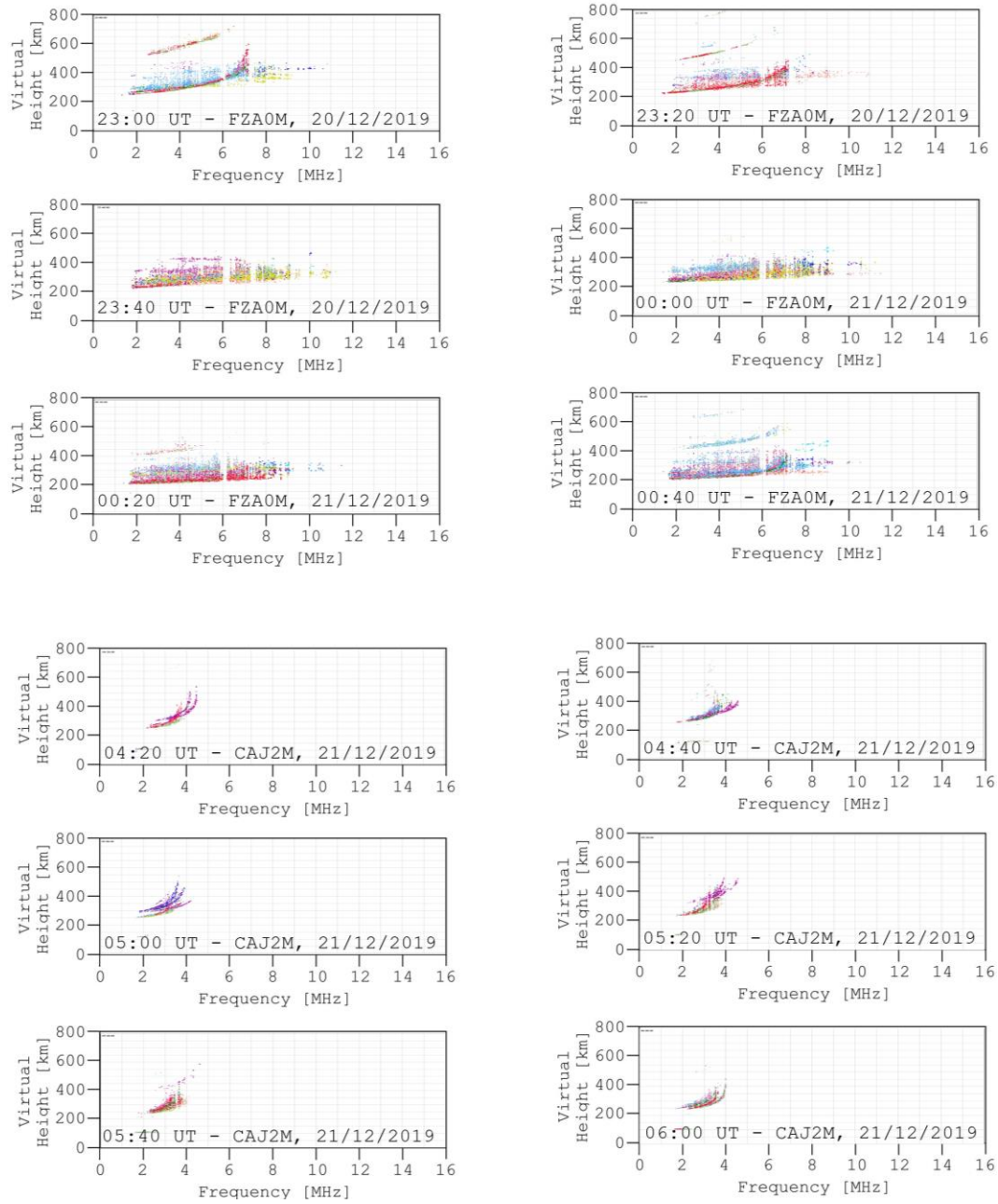


**Figure S14:** Expanded IONO image collection for the 2018 plasma bubble event.

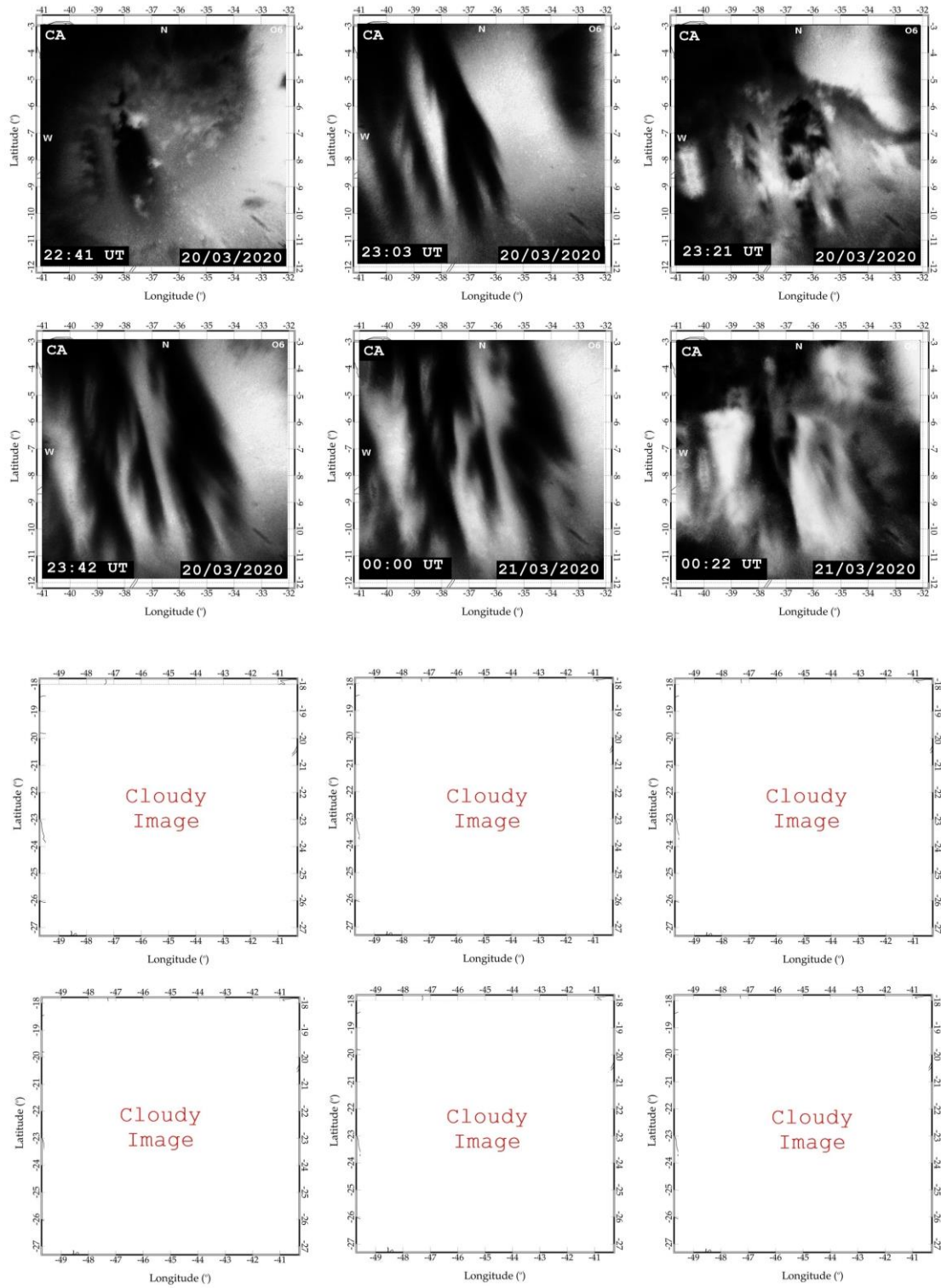




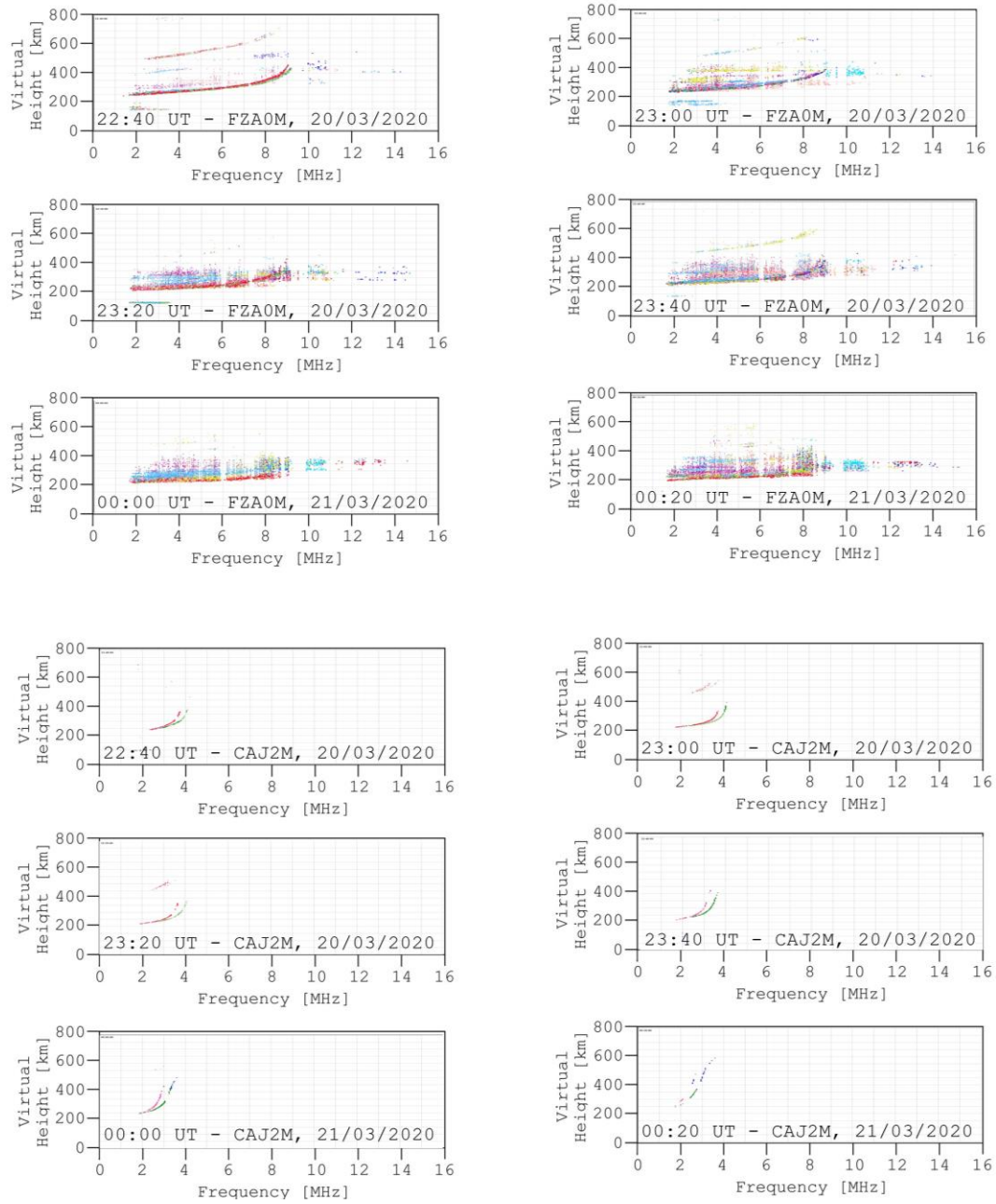
**Figure S15:** Expanded ASI image collection for the 2019 plasma bubble event.



**Figure S16:** Expanded IONO image collection for the 2019 plasma bubble event.



**Figure S17:** Expanded ASI image collection for the 2020 plasma bubble event.



**Figure S18:** Expanded IONO image collection for the 2020 plasma bubble event.