



Corrigendum to “Magnetometer in-flight offset accuracy for the BepiColombo spacecraft” published in Ann. Geophys., 38, 823–832, 2020

Daniel Schmid¹, Ferdinand Plaschke¹, Yasuhito Narita¹, Daniel Heyner², Johannes Z. D. Mieth², Brian J. Anderson³,
Martin Volwerk¹, Ayako Matsuoka^{4,5}, and Wolfgang Baumjohann¹

¹Space Research Institute, Austrian Academy of Sciences, Graz, Austria

²Institut für Geophysik und extraterrestrische Physik, Technische Universität Braunschweig, 38106 Braunschweig, Germany

³The Johns Hopkins University Applied Physics Laboratory, Laurel, Maryland, USA

⁴Institute of Space and Astronautical Science, JAXA, Yoshinodai, Kanagawa, Japan

⁵Data Analysis Center for Geomagnetism and Space Magnetism Graduate School of Science, Kyoto University, Kyoto, Japan

Correspondence: Daniel Schmid (daniel.schmid@oeaw.ac.at)

Published: 6 August 2020

During image processing by Copernicus some axis labels were shifted by mistake when the fonts were embedded. Please see the correct figures below.

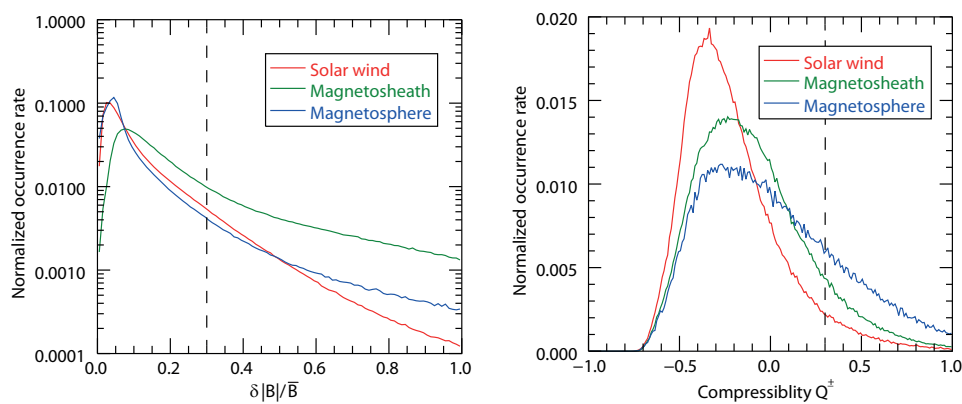


Figure 2. (a) Normalized occurrence rate of the total magnetic field fluctuations $\delta|B|/\bar{B}$ in the solar wind (blue), magnetosheath (green) and magnetosphere (red) during 4 years of MESSENGER observations. (b) Normalized occurrence rate of the compressibility index Q^\pm for magnetic fluctuations with $\delta|B|/\bar{B} > 0.3$. Positive or negative Q^\pm values indicate whether the compressional or the transverse part of the magnetic fluctuations is dominating and $Q^\pm > 0.3$ values are considered as strong compressional fluctuations.

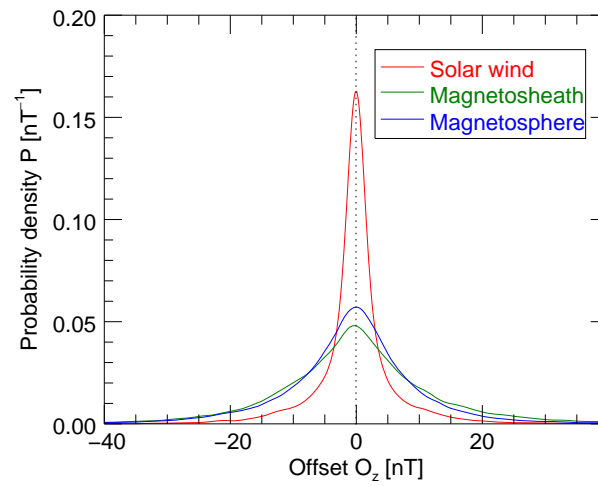


Figure 3. Probability density function P , estimated with the KDE method from Eq. (3) from 4-years of MESSENGER observations.