

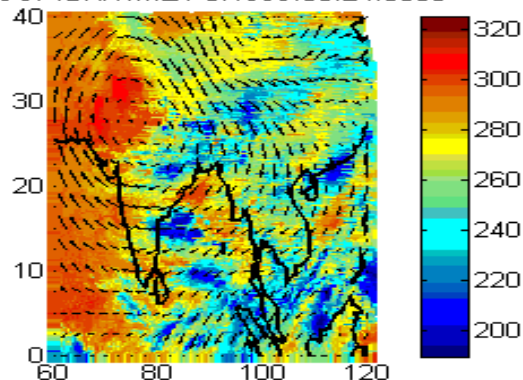
## **Auxiliary Material File 2.**

Left hand side panels show satellite imageries drawn using 6 hourly ICSSP-DX data. Horizontal wind field at 100 hPa level, corresponding to each of the satellite imagery, from ECMWF reanalysis is superposed. Right hand side panels show contour maps of temperature field at 100 hPa level. Resolution of ECMWF reanalysis data presented in these pictures is  $2.5^{\circ}\times 2.5^{\circ}$ .

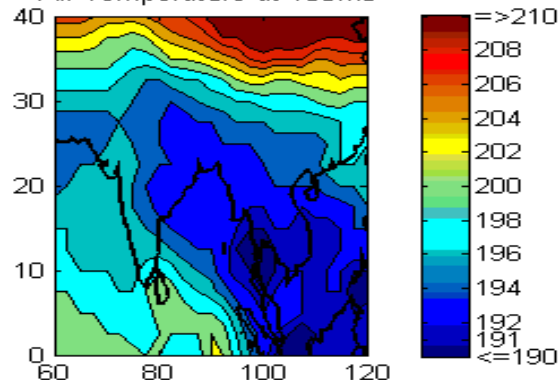
Period: 24 August 1999, 00GMT to 28 August 1999, 18 GMT.

Simultaneous movement of the cloud and low temperature system under the influence of the horizontal winds is evident.

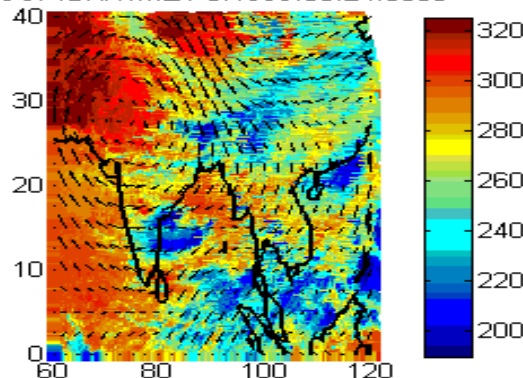
ISCCP.DX.1.MET-5.1999.08.24.0000



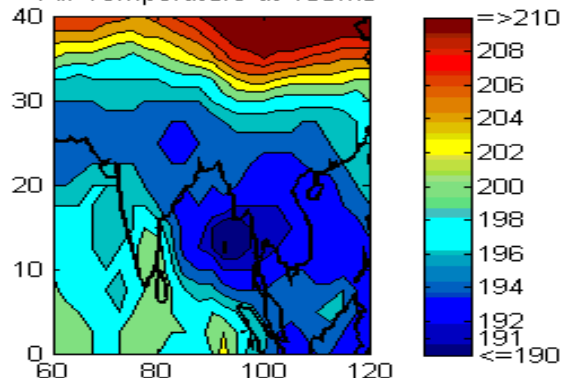
Air Temperature at 100mb



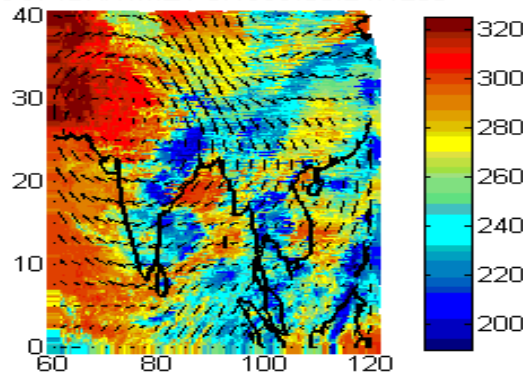
ISCCP.DX.1.MET-5.1999.08.24.0600



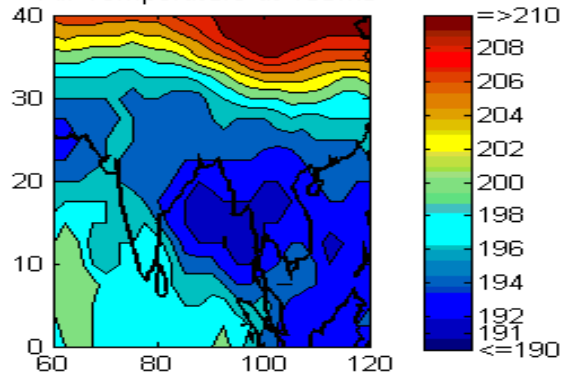
Air Temperature at 100mb



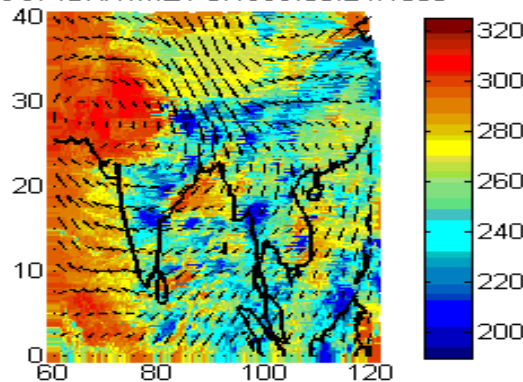
ISCCP.DX.1.MET-5.1999.08.24.1200



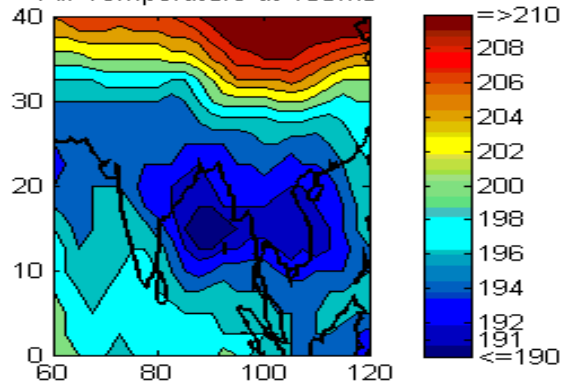
Air Temperature at 100mb



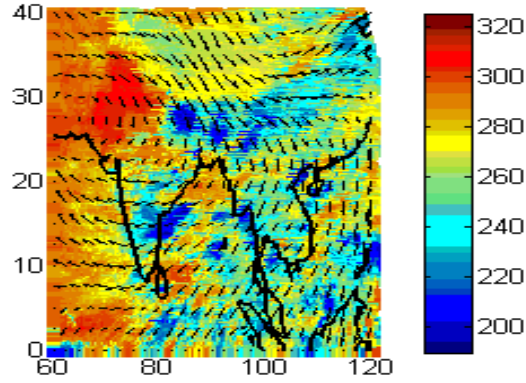
ISCCP.DX.1.MET-5.1999.08.24.1800



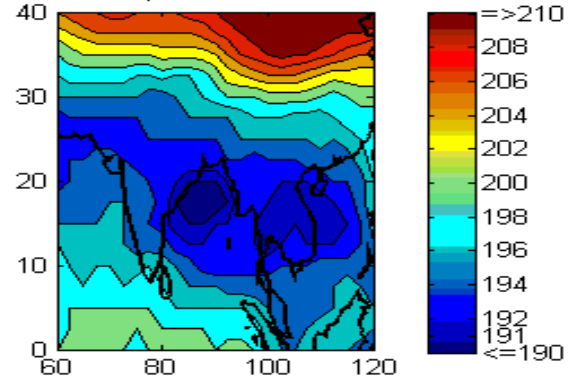
Air Temperature at 100mb



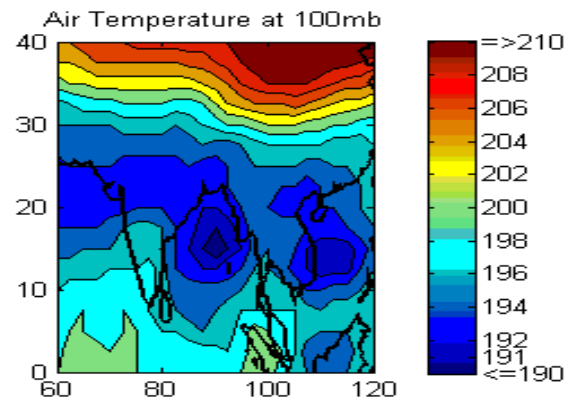
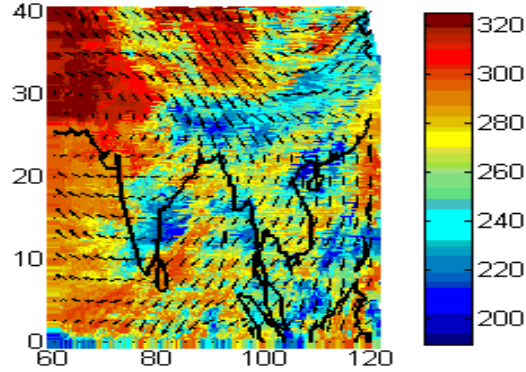
ISCCP.DX.1.MET-5.1999.08.25.0000



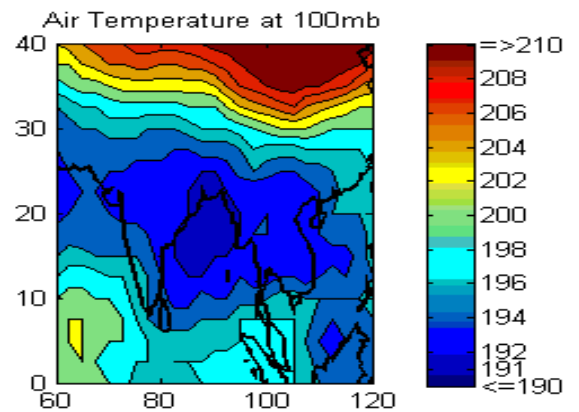
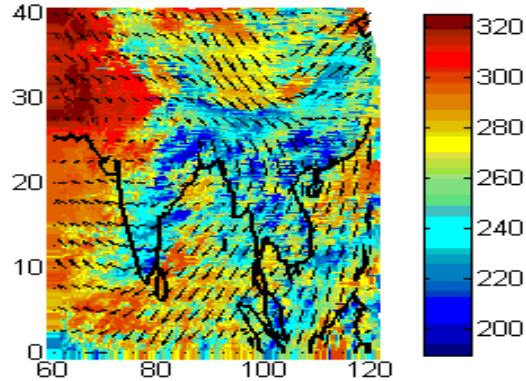
Air Temperature at 100mb



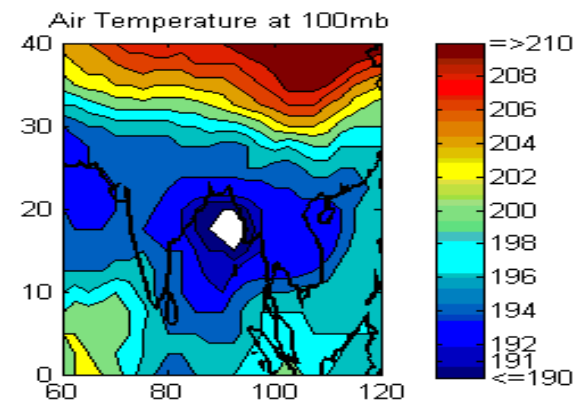
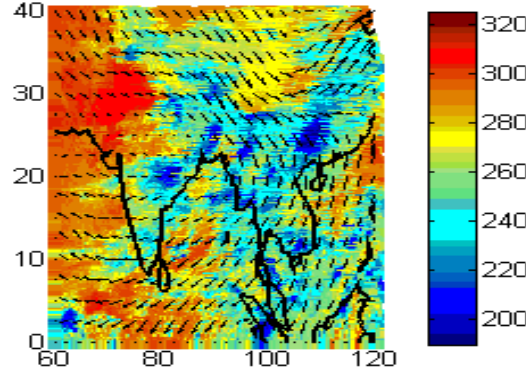
ISCCP.DX.1.MET-5.1999.08.25.0600



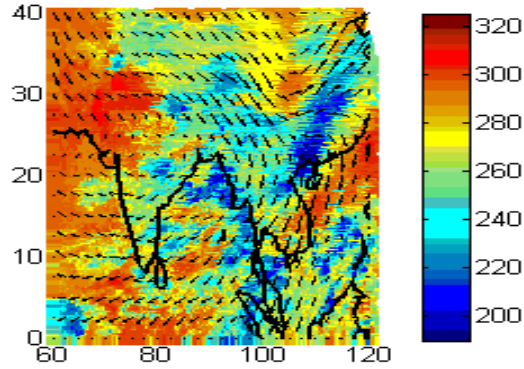
ISCCP.DX.1.MET-5.1999.08.25.1200



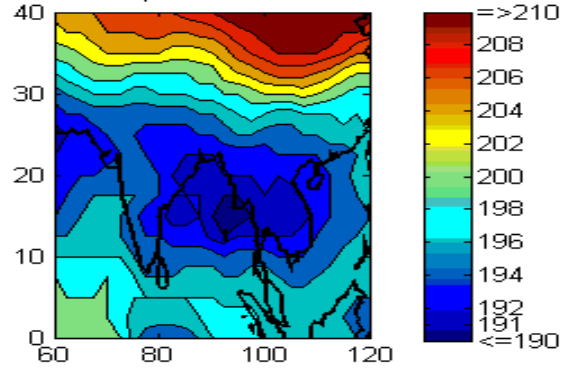
ISCCP.DX.1.MET-5.1999.08.25.1800



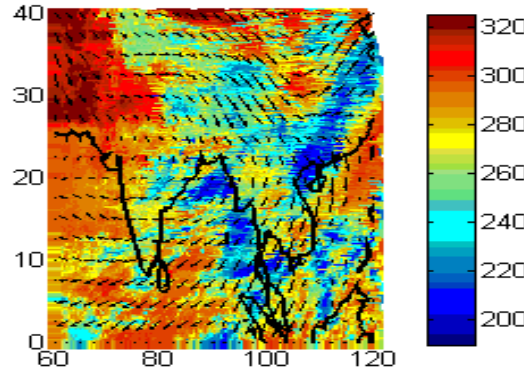
ISCCP.DX.1.MET-5.1999.08.26.0000



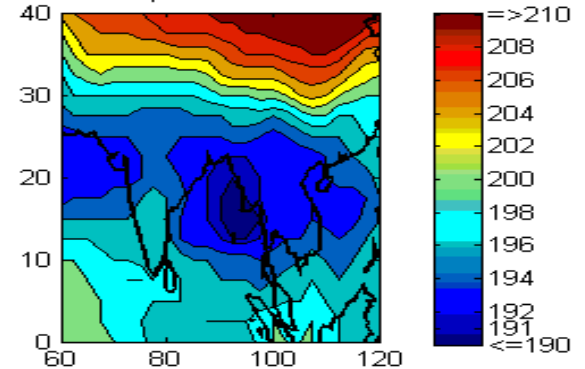
Air Temperature at 100mb



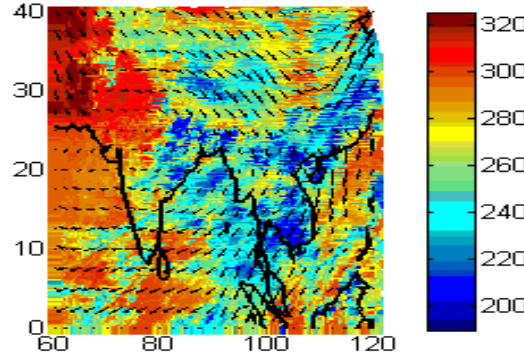
ISCCP.DX.1.MET-5.1999.08.26.0600



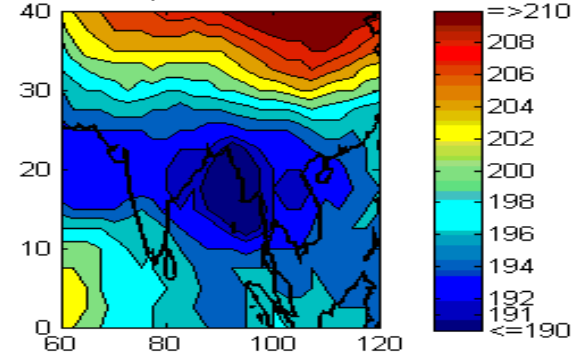
Air Temperature at 100mb



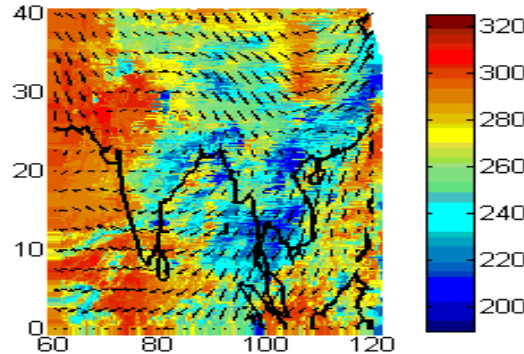
ISCCP.DX.1.MET-5.1999.08.26.1200



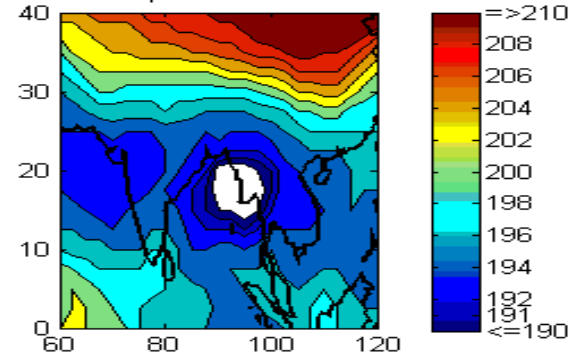
Air Temperature at 100mb



ISCCP.DX.1.MET-5.1999.08.26.1800

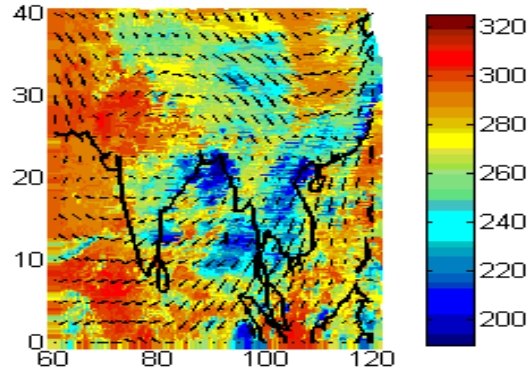


Air Temperature at 100mb

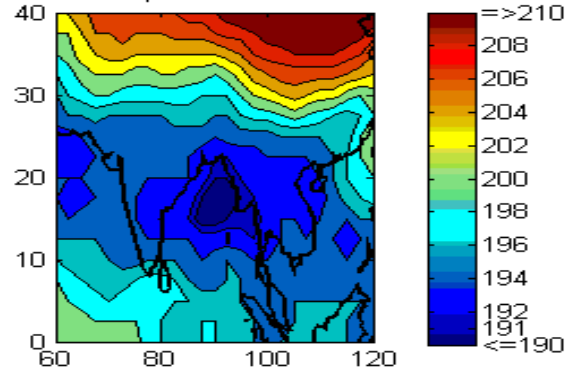




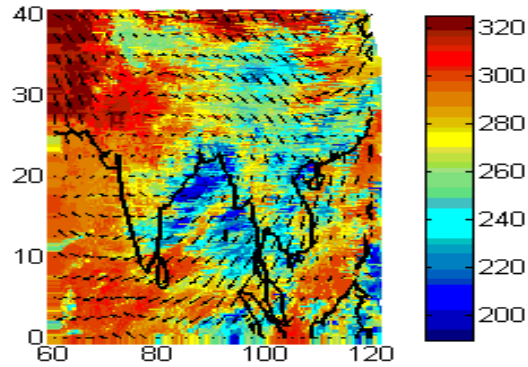
ISCCP.DX.1.MET-5.1999.08.27.0000



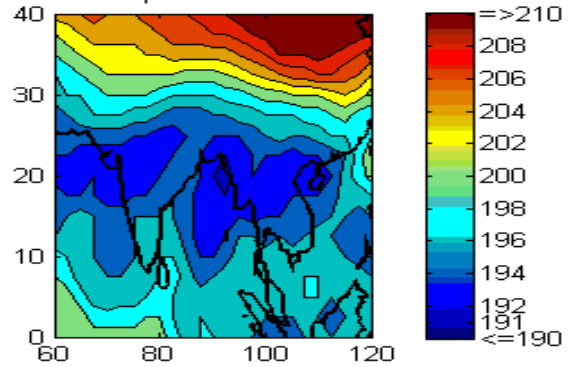
Air Temperature at 100mb



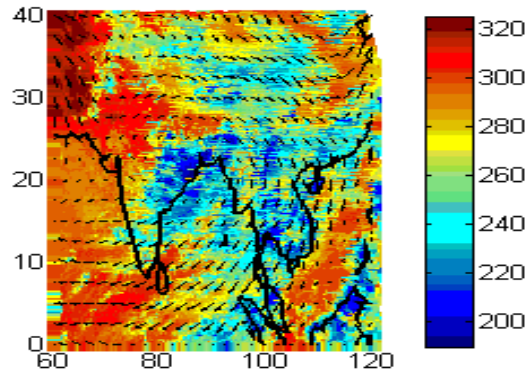
ISCCP.DX.1.MET-5.1999.08.27.0600



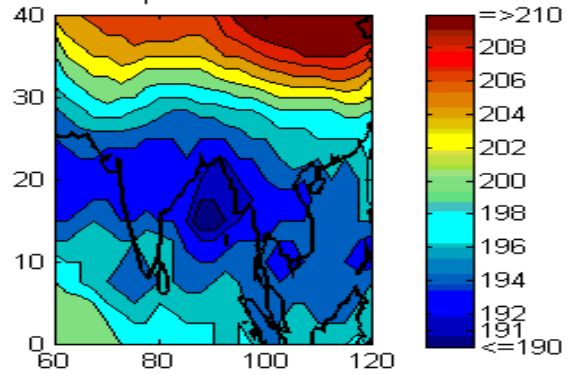
Air Temperature at 100mb



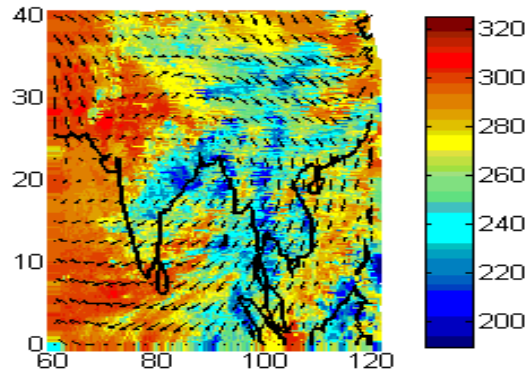
ISCCP.DX.1.MET-5.1999.08.27.1200



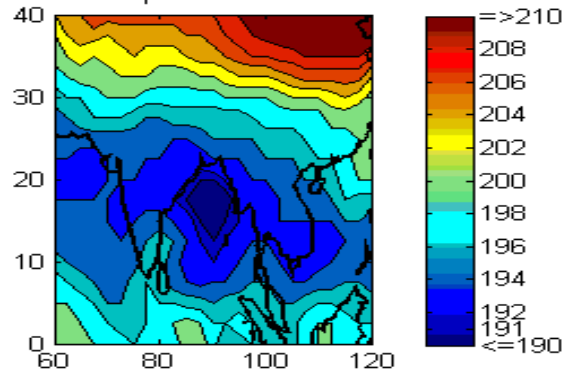
Air Temperature at 100mb



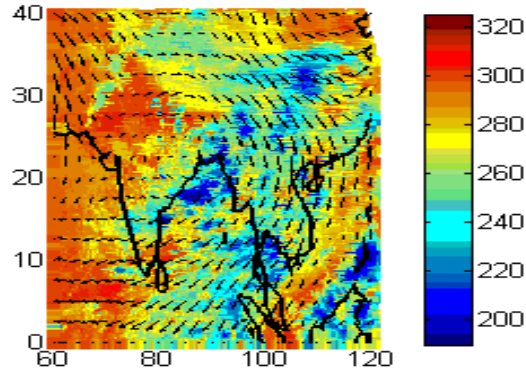
ISCCP.DX.1.MET-5.1999.08.27.1800



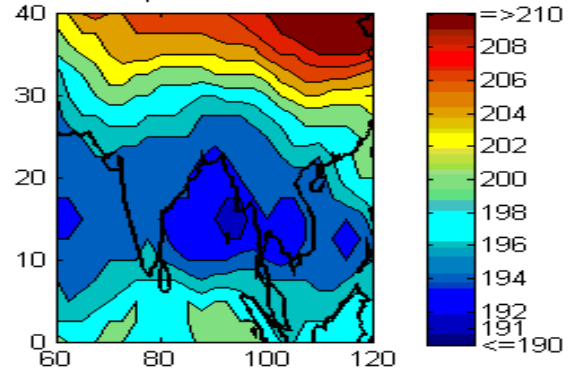
Air Temperature at 100mb



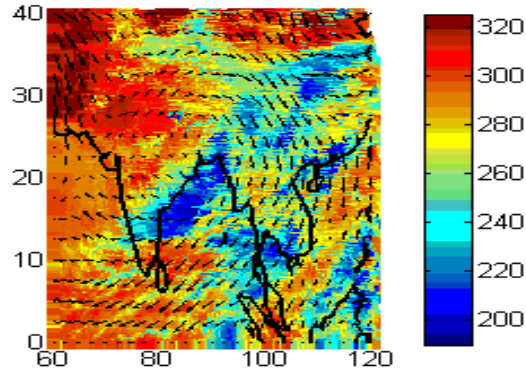
ISCCP.DX.1.MET-5.1999.08.28.0000



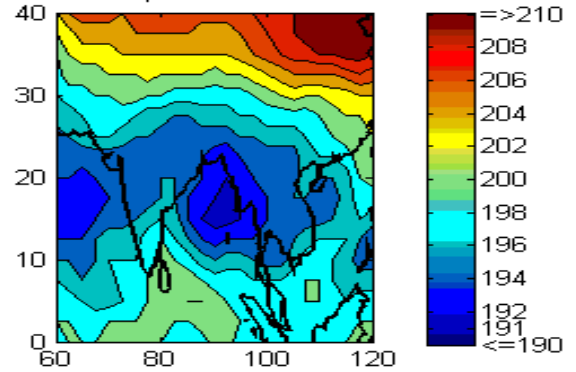
Air Temperature at 100mb



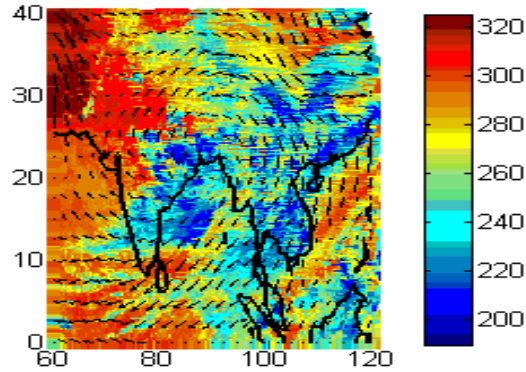
ISCCP.DX.1.MET-5.1999.08.28.0600



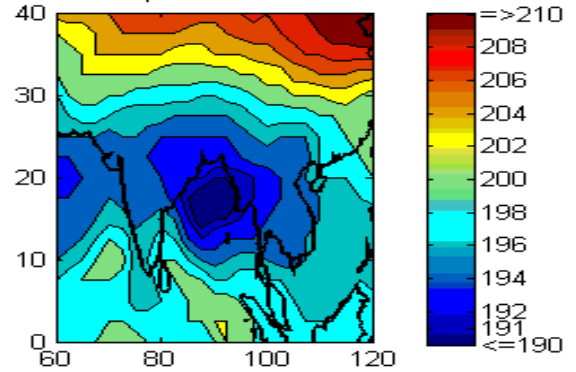
Air Temperature at 100mb



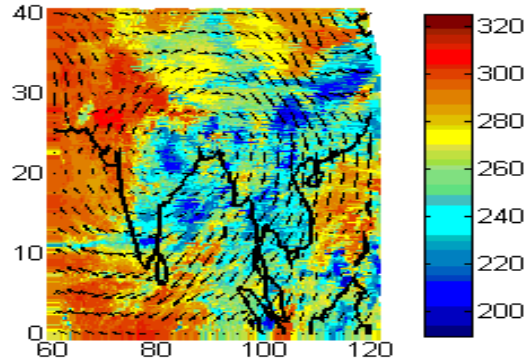
ISCCP.DX.1.MET-5.1999.08.28.1200



Air Temperature at 100mb



ISCCP.DX.1.MET-5.1999.08.28.1800



Air Temperature at 100mb

